



Officials: Joe Lindsay, Larry Spaulding, Edwin Young

Saint Peter's - 85

Record: 20-11

| NO. | Name | F | Min | FG | | | 3P | | | FT | | | Rebounds | | | Fouls | | TP | AS | TO | ST | Blocks | | +/- |
|---------------|-----------------|---|-------|-------|------|-------|----|----|-----|----|----|----|----------|----|---|-------|----|----|----|----|----|--------|--|-----|
| | | | | M-A | M-A | M-A | OR | DR | TOT | PF | FD | BS | BA | | | | | | | | | | | |
| 11 | KC Ndefo | F | 24:45 | 2-4 | 0-1 | 3-5 | 0 | 3 | 3 | 3 | 3 | 7 | 2 | 5 | 0 | 2 | 1 | 11 | | | | | | |
| 12 | Clarence Rupert | F | 18:40 | 3-5 | 0-1 | 0-0 | 1 | 3 | 4 | 3 | 0 | 6 | 1 | 2 | 0 | 0 | 0 | -7 | | | | | | |
| 14 | Hassan Drame | F | 34:13 | 3-4 | 0-0 | 1-2 | 2 | 6 | 8 | 4 | 1 | 7 | 4 | 0 | 1 | 1 | -4 | | | | | | | |
| 5 | Daryl Banks III | G | 37:33 | 9-19 | 5-8 | 4-4 | 0 | 4 | 4 | 2 | 3 | 27 | 2 | 3 | 1 | 0 | 1 | | | | | | | |
| 15 | Matthew Lee | G | 26:28 | 1-5 | 0-1 | 2-2 | 0 | 1 | 1 | 2 | 3 | 4 | 4 | 1 | 1 | 1 | -3 | | | | | | | |
| 10 | Fousseyni Drame | | 13:26 | 2-2 | 0-0 | 0-0 | 1 | 1 | 2 | 3 | 2 | 4 | 0 | 0 | 0 | 0 | 7 | | | | | | | |
| 13 | Isiah Dasher | | 18:15 | 1-4 | 0-2 | 0-0 | 0 | 1 | 1 | 4 | 0 | 2 | 1 | 1 | 0 | 0 | 8 | | | | | | | |
| 25 | Doug Edert | | 24:45 | 5-7 | 2-2 | 8-8 | 1 | 3 | 4 | 2 | 4 | 20 | 2 | 1 | 0 | 0 | 10 | | | | | | | |
| 32 | Jaylen Murray | | 18:32 | 3-7 | 2-2 | 0-0 | 0 | 3 | 3 | 2 | 1 | 8 | 2 | 1 | 1 | 0 | 9 | | | | | | | |
| 24 | Oumar Diahame | | 08:23 | 0-0 | 0-0 | 0-0 | 0 | 1 | 1 | 0 | 0 | 0 | 0 | 1 | 0 | 0 | -2 | | | | | | | |
| Team | | | | | | | 3 | 1 | 4 | | | 0 | | 0 | | | | | | | | | | |
| Totals | | | | 29-57 | 9-17 | 18-21 | 8 | 27 | 35 | 25 | 17 | 85 | 18 | 15 | 4 | 4 | 6 | 6 | | | | | | |

| Shooting By Period | | |
|--------------------|-------|-------|
| 1st FG% | 15-32 | 46.9% |
| 3PT% | 5-9 | 55.6% |
| FT% | 2-3 | 66.7% |
| 2nd FG% | 12-22 | 54.5% |
| 3PT% | 3-7 | 42.9% |
| FT% | 7-7 | 100% |
| OT FG% | 2-3 | 66.7% |
| 3PT% | 1-1 | 100% |
| FT% | 9-11 | 81.8% |
| GM FG% | 29-57 | 50.9% |
| 3PT% | 9-17 | 52.9% |
| FT% | 18-21 | 85.7% |

Dead Ball Rebounds: 1, 0

Technical Fouls::NONE

Kentucky - 79

Record: 26-8

| NO. | Name | F | Min | FG | | | 3P | | | FT | | | Rebounds | | | Fouls | | TP | AS | TO | ST | Blocks | | +/- |
|---------------|---------------------|---|-------|-------|------|-------|----|----|-----|----|----|----|----------|----|---|-------|-----|----|----|----|----|--------|--|-----|
| | | | | M-A | M-A | M-A | OR | DR | TOT | PF | FD | BS | BA | | | | | | | | | | | |
| 12 | Keion Brooks Jr. | F | 28:33 | 2-7 | 0-1 | 4-5 | 2 | 1 | 3 | 2 | 4 | 8 | 2 | 0 | 2 | 2 | 1 | 0 | | | | | | |
| 34 | Oscar Tshiebwe | F | 42:36 | 11-16 | 0-0 | 8-12 | 6 | 10 | 16 | 3 | 7 | 30 | 2 | 3 | 2 | 2 | -4 | | | | | | | |
| 2 | Sahvir Wheeler | G | 39:45 | 4-8 | 1-2 | 2-5 | 0 | 4 | 4 | 4 | 5 | 11 | 6 | 6 | 0 | 0 | -15 | | | | | | | |
| 3 | TyTy Washington Jr. | G | 31:39 | 2-10 | 1-2 | 0-0 | 1 | 1 | 2 | 3 | 1 | 5 | 1 | 2 | 0 | 0 | -1 | | | | | | | |
| 31 | Kellan Grady | G | 39:39 | 1-9 | 1-7 | 5-6 | 1 | 4 | 5 | 0 | 3 | 8 | 4 | 0 | 1 | 0 | 1 | | | | | | | |
| 0 | Jacob Toppin | | 16:27 | 3-3 | 0-0 | 3-4 | 0 | 1 | 1 | 0 | 3 | 9 | 1 | 1 | 0 | 1 | -6 | | | | | | | |
| 10 | Davion Mintz | | 23:57 | 3-7 | 1-3 | 1-3 | 2 | 1 | 3 | 5 | 2 | 8 | 2 | 0 | 1 | 0 | -3 | | | | | | | |
| 55 | Lance Ware | | 02:24 | 0-1 | 0-0 | 0-0 | 0 | 0 | 0 | 0 | 0 | 0 | 0 | 0 | 0 | 0 | -2 | | | | | | | |
| Team | | | | | | | 2 | 0 | 2 | | | 0 | | 1 | | | | | | | | | | |
| Totals | | | | 26-61 | 4-15 | 23-35 | 14 | 22 | 36 | 17 | 25 | 79 | 18 | 13 | 6 | 6 | 4 | -6 | | | | | | |

| Shooting By Period | | |
|--------------------|-------|-------|
| 1st FG% | 11-25 | 44.0% |
| 3PT% | 2-7 | 28.6% |
| FT% | 13-15 | 86.7% |
| 2nd FG% | 12-29 | 41.4% |
| 3PT% | 1-5 | 20.0% |
| FT% | 9-14 | 64.3% |
| OT FG% | 3-7 | 42.9% |
| 3PT% | 1-3 | 33.3% |
| FT% | 1-6 | 16.7% |
| GM FG% | 26-61 | 42.6% |
| 3PT% | 4-15 | 26.7% |
| FT% | 23-35 | 65.7% |

Dead Ball Rebounds: 6, 0

Technical Fouls::NONE

| | SP | UK |
|------------------|-----------------------------|---------------------------|
| Biggest lead | 6 (1 st OT 0:07) | 6 (2 nd 4:12) |
| Best Scoring Run | 7 (2 nd 1:25) | 7 (2 nd 14:43) |
| Lead Changes | 13 | |
| Times Tied | 16 | |
| Time with Lead | 09:46 | 23:21 |

| | SP | UK |
|---------------|----|----|
| Points from | | |
| Turnovers | 15 | 9 |
| Paint | 34 | 36 |
| Second Chance | 14 | 15 |
| Fast Breaks | 9 | 6 |
| Bench | 34 | 17 |

| | Period by Period Scoring | | | |
|----|--------------------------|-----|-----|-----|
| | 1st | 2nd | OT1 | TOT |
| SP | 37 | 34 | 14 | 85 |
| UK | 37 | 34 | 8 | 79 |



Officials: Joe Lindsay, Larry Spaulding, Edwin Young

Period 1

Quarter Starters:

| | | | | | |
|-----------|---------------|--------------------|-----------------|------------|---------------|
| UK | 2 Wheeler S | 3 Washington Jr. T | 12 Brooks Jr. K | 31 Grady K | 34 Tshiebwe O |
| SP | 5 Banks III D | 11 Ndefo K | 12 Rupert C | 14 Drame H | 15 Lee M |

| Game Time | UK | Score | Diff | SP |
|-----------|--|------------|----------|---|
| 20:00 | 34 TSHIEBWE O jumpball won | | | 12 RUPERT C jumpball lost |
| 19:45 | 2 WHEELER S turnover bad pass (1) | | | |
| 19:30 | | | | 11 NDEFO K turnover travel (1) |
| 19:19 | 31 GRADY K 3pt FG from turnover, jump shot missed | | | |
| 19:13 | | | | 5 BANKS III D defensive rebound (1) |
| 19:07 | 2 WHEELER S foul drawn (1) | | | 11 NDEFO K foul offensive (1 - 1) |
| 19:07 | | | | 11 NDEFO K turnover offensive (2) |
| 18:51 | 34 TSHIEBWE O 2pt FG from turnover in the paint, turnaround jump shot missed | | | |
| 18:49 | | | | 12 RUPERT C defensive rebound (1) |
| 18:45 | | | | 15 LEE M 2pt FG in the paint, driving layup missed |
| 18:42 | | | | 14 DRAME H offensive rebound (1) |
| 18:29 | 12 BROOKS JR. K steal (1) | | | 11 NDEFO K turnover lost ball (3) |
| 18:29 | 12 BROOKS JR. K foul drawn (1) | | | 11 NDEFO K foul personal (2 - 2) |
| 18:29 | | | | 11 NDEFO K substitution out |
| 18:29 | | | | 10 DRAME F substitution in |
| 17:59 | 12 BROOKS JR. K 2pt FG from turnover outside the paint, pull up jump shot missed | | | |
| 17:59 | | | | 12 RUPERT C defensive rebound (2) |
| 17:37 | | | | 12 RUPERT C 3pt FG , jump shot missed |
| 17:33 | 34 TSHIEBWE O defensive rebound (1) | | | |
| 17:28 | 31 GRADY K 3pt FG , jump shot missed | | | |
| 17:24 | 12 BROOKS JR. K offensive rebound (1) | | | |
| 17:24 | 12 BROOKS JR. K foul drawn (2) | | | 10 DRAME F foul shooting (1 - 3) |
| 17:24 | 12 BROOKS JR. K free throw 1 - 2 made (1) | 1-0 | 1 | |
| 17:24 | 12 BROOKS JR. K free throw 2 - 2 made (2) | 2-0 | 2 | |
| 17:09 | | 2-2 | 0 | 5 BANKS III D 2pt FG in the paint, dunk, made (2) |
| 17:09 | | | | 14 DRAME H assist (1) |
| 16:59 | 3 WASHINGTON JR. T turnover travel (1) | | | |
| 16:39 | | | | 5 BANKS III D 2pt FG from turnover in the paint, step back jump shot missed |
| 16:35 | 34 TSHIEBWE O defensive rebound (2) | | | |
| 16:16 | 2 WHEELER S 3pt FG , jump shot made (3) | 5-2 | 3 | |
| 16:16 | 31 GRADY K assist (1) | | | |
| 15:54 | | | | 15 LEE M 2pt FG in the paint, pull up jump shot blocked |
| 15:54 | 12 BROOKS JR. K block (1) | | | |
| 15:51 | 2 WHEELER S defensive rebound (1) | | | |
| 15:50 | 34 TSHIEBWE O foul offensive (1 - 1) | | | 5 BANKS III D foul drawn (1) |
| 15:50 | 34 TSHIEBWE O turnover offensive (1) | | | |
| 15:50 | Timeout media | | | |
| 15:50 | 12 BROOKS JR. K substitution out | | | |
| 15:50 | 31 GRADY K substitution out | | | |
| 15:50 | 0 TOPPIN J substitution in | | | |
| 15:50 | 10 MINTZ D substitution in | | | |



Official Basketball Play by Play - First Half
Saint Peter's at Kentucky
 03/17/22 Gainbridge Fieldhouse, Indianapolis, IN
 NCAA Division I Men's Basketball Championship - First Round

Game Time: 7:10 PM
 Game Duration: 2:29

Officials: Joe Lindsay, Larry Spaulding, Edwin Young

| Game Time | UK | Score | Diff | SP |
|-----------|--|-------|------|--|
| 15:50 | | | | 14 DRAME H substitution out |
| 15:50 | | | | 13 DASHER I substitution in |
| 15:41 | | 5-5 | 0 | 5 BANKS III D 3pt FG from turnover, jump shot made (5) |
| 15:41 | | | | 13 DASHER I assist (1) |
| 15:16 | 34 TSHIEBWE O 2pt FG outside the paint, jump shot made (2) | 7-5 | 2 | |
| 15:16 | 2 WHEELER S assist (1) | | | |
| 15:05 | | 7-8 | -1 | 5 BANKS III D 3pt FG , jump shot made (8) |
| 15:05 | | | | 15 LEE M assist (1) |
| 14:47 | 3 WASHINGTON JR. T 2pt FG in the paint, driving layup made (2) | 9-8 | 1 | |
| 14:18 | | | | 15 LEE M 2pt FG outside the paint, step back jump shot missed |
| 14:16 | | | | offensive dead ball rebound (1) |
| 14:16 | 2 WHEELER S foul loose ball (1 - 2) | | | 10 DRAME F foul drawn (1) |
| 14:16 | | | | 5 BANKS III D substitution out |
| 14:16 | | | | 15 LEE M substitution out |
| 14:16 | | | | 25 EDERT D substitution in |
| 14:16 | | | | 32 MURRAY J substitution in |
| 14:04 | | 9-11 | -2 | 32 MURRAY J 3pt FG second chance, pull up jump shot made (3) |
| 13:54 | 34 TSHIEBWE O foul drawn (1) | | | 10 DRAME F foul shooting (2 - 4) |
| 13:54 | 34 TSHIEBWE O free throw 1 - 2 made (3) | 10-11 | -1 | |
| 13:54 | 3 WASHINGTON JR. T substitution out | | | |
| 13:54 | 31 GRADY K substitution in | | | |
| 13:54 | | | | 10 DRAME F substitution out |
| 13:54 | | | | 14 DRAME H substitution in |
| 13:54 | 34 TSHIEBWE O free throw 2 - 2 missed | | | |
| 13:52 | | | | 14 DRAME H defensive rebound (2) |
| 13:29 | | | | 25 EDERT D 2pt FG in the paint, driving layup missed |
| 13:27 | | | | 25 EDERT D offensive rebound (1) |
| 13:26 | | 10-13 | -3 | 25 EDERT D 2pt FG second chance outside the paint, turnaround jump shot made (2) |
| 13:09 | 2 WHEELER S 3pt FG , jump shot missed | | | |
| 13:06 | 10 MINTZ D offensive rebound (1) | | | |
| 13:05 | 10 MINTZ D 3pt FG second chance, jump shot missed | | | |
| 13:01 | | | | 12 RUPERT C defensive rebound (3) |
| 12:46 | | 10-15 | -5 | 13 DASHER I 2pt FG in the paint, layup made (2) |
| 12:46 | | | | 12 RUPERT C assist (1) |
| 12:30 | 10 MINTZ D 2pt FG in the paint, floating jump shot made (2) | 12-15 | -3 | |
| 12:30 | 2 WHEELER S assist (2) | | | |
| 12:11 | | | | 32 MURRAY J 2pt FG outside the paint, pull up jump shot missed |
| 12:06 | 34 TSHIEBWE O defensive rebound (3) | | | |
| 12:02 | 0 TOPPIN J foul drawn (1) | | | 14 DRAME H foul shooting (1 - 5) |
| 12:02 | 0 TOPPIN J free throw 1 - 2 made (1) | 13-15 | -2 | |
| 12:02 | | | | 12 RUPERT C substitution out |
| 12:02 | | | | 24 DIAHAME O substitution in |
| 12:02 | 0 TOPPIN J free throw 2 - 2 made (2) | 14-15 | -1 | |
| 12:02 | 0 TOPPIN J substitution out | | | |
| 12:02 | 34 TSHIEBWE O substitution out | | | |
| 12:02 | 12 BROOKS JR. K substitution in | | | |



Official Basketball Play by Play - First Half

Saint Peter's at Kentucky

03/17/22 Gainbridge Fieldhouse, Indianapolis, IN
NCAA Division I Men's Basketball Championship - First Round

Game Time: 7:10 PM

Game Duration: 2:29

Officials: Joe Lindsay, Larry Spaulding, Edwin Young

| Game Time | UK | Score | Diff | SP |
|-----------|--|--------------|-----------|--|
| 12:02 | 55 WARE L substitution in | | | |
| 11:51 | | | | 13 DASHER I 2pt FG in the paint, driving layup blocked |
| 11:51 | 55 WARE L block (1) | | | |
| 11:46 | 31 GRADY K defensive rebound (1) | | | |
| 11:26 | 55 WARE L 2pt FG in the paint, hook shot missed | | | |
| 11:23 | | | | 24 DIAHAME O defensive rebound (1) |
| 10:59 | | 14-17 | -3 | 14 DRAME H 2pt FG in the paint, driving layup made (2) |
| 10:59 | | | | 25 EDERT D assist (1) |
| 10:45 | 10 MINTZ D 3pt FG , jump shot made (5) | 17-17 | 0 | |
| 10:45 | 31 GRADY K assist (2) | | | |
| 10:25 | | 17-19 | -2 | 25 EDERT D 2pt FG in the paint, floating jump shot made (4) |
| 10:25 | | | | 14 DRAME H assist (2) |
| 10:25 | 10 MINTZ D foul shooting (1 - 3) | | | 25 EDERT D foul drawn (1) |
| 10:25 | Timeout media | | | |
| 10:25 | 2 WHEELER S substitution out | | | |
| 10:25 | 3 WASHINGTON JR. T substitution in | | | |
| 10:25 | | 17-20 | -3 | 25 EDERT D free throw 1 - 1 made (5) |
| 10:04 | 31 GRADY K foul drawn (1) | | | 25 EDERT D foul shooting (1 - 6) |
| 10:04 | 31 GRADY K free throw 1 - 2 missed | | | |
| 10:04 | offensive dead ball rebound (1) | | | |
| 10:04 | 55 WARE L substitution out | | | |
| 10:04 | 34 TSHIEBWE O substitution in | | | |
| 10:02 | 31 GRADY K free throw 2 - 2 made (1) | 18-20 | -2 | |
| 09:49 | | | | 32 MURRAY J 2pt FG outside the paint, floating jump shot missed |
| 09:46 | 31 GRADY K defensive rebound (2) | | | |
| 09:34 | 31 GRADY K foul drawn (2) | | | 32 MURRAY J foul shooting (1 - 7) |
| 09:34 | 31 GRADY K free throw 1 - 2 made (2) | 19-20 | -1 | |
| 09:34 | 12 BROOKS JR. K substitution out | | | |
| 09:34 | 0 TOPPIN J substitution in | | | |
| 09:34 | | | | 13 DASHER I substitution out |
| 09:34 | | | | 32 MURRAY J substitution out |
| 09:34 | | | | 5 BANKS III D substitution in |
| 09:34 | | | | 15 LEE M substitution in |
| 09:34 | 31 GRADY K free throw 2 - 2 made (3) | 20-20 | 0 | |
| 09:15 | | | | 24 DIAHAME O turnover out of bounds (1) |
| 08:48 | 0 TOPPIN J 2pt FG from turnover in the paint, dunk, made (4) | 22-20 | 2 | |
| 08:48 | 31 GRADY K assist (3) | | | |
| 08:33 | | 22-22 | 0 | 5 BANKS III D 2pt FG outside the paint, floating jump shot made (10) |
| 08:33 | | | | 14 DRAME H assist (3) |
| 08:17 | 34 TSHIEBWE O 2pt FG outside the paint, jump shot made (5) | 24-22 | 2 | |
| 08:17 | 0 TOPPIN J assist (1) | | | |
| 07:52 | | | | 5 BANKS III D 2pt FG in the paint, driving layup blocked |
| 07:52 | 0 TOPPIN J block (1) | | | |
| 07:49 | 3 WASHINGTON JR. T defensive rebound (1) | | | |
| 07:46 | 31 GRADY K foul drawn (3) | | | 25 EDERT D foul shooting (2 - 8) |
| 07:46 | Timeout media | | | |
| 07:46 | 10 MINTZ D substitution out | | | |
| 07:46 | 2 WHEELER S substitution in | | | |



Saint Peter's at Kentucky

03/17/22 Gainbridge Fieldhouse, Indianapolis, IN
 NCAA Division I Men's Basketball Championship - First Round

Officials: Joe Lindsay, Larry Spaulding, Edwin Young

| Game Time | UK | Score | Diff | SP |
|-----------|---|--------------|----------|---|
| 07:46 | | | | 24 DIAHAME O substitution out |
| 07:46 | | | | 25 EDERT D substitution out |
| 07:46 | | | | 12 RUPERT C substitution in |
| 07:46 | | | | 13 DASHER I substitution in |
| 07:46 | 31 GRADY K free throw fast break 1 - 2 made (4) | 25-22 | 3 | |
| 07:46 | 31 GRADY K free throw fast break 2 - 2 made (5) | 26-22 | 4 | |
| 07:16 | | | | 15 LEE M 3pt FG , pull up jump shot missed |
| 07:11 | 2 WHEELER S defensive rebound (2) | | | |
| 06:52 | | | | 15 LEE M substitution out |
| 06:52 | | | | 32 MURRAY J substitution in |
| 06:48 | 3 WASHINGTON JR. T 2pt FG outside the paint, pull up jump shot missed | | | |
| 06:44 | | | | 32 MURRAY J defensive rebound (1) |
| 06:23 | 3 WASHINGTON JR. T foul shooting (1 - 4) | | | 14 DRAME H foul drawn (1) |
| 06:23 | | 26-23 | 3 | 14 DRAME H free throw 1 - 2 made (3) |
| 06:23 | | | | 14 DRAME H free throw 2 - 2 missed |
| 06:21 | 0 TOPPIN J defensive rebound (1) | | | |
| 06:04 | 2 WHEELER S 2pt FG outside the paint, floating jump shot missed | | | |
| 06:00 | | | | 13 DASHER I defensive rebound (1) |
| 05:54 | | 26-25 | 1 | 12 RUPERT C 2pt FG fast break in the paint, layup made (2) |
| 05:54 | | | | 32 MURRAY J assist (1) |
| 05:42 | 3 WASHINGTON JR. T 2pt FG in the paint, pull up jump shot missed | | | |
| 05:40 | 34 TSHIEBWE O offensive rebound (4) | | | |
| 05:40 | 34 TSHIEBWE O 2pt FG second chance in the paint, layup made (7) | 28-25 | 3 | |
| 05:40 | 34 TSHIEBWE O foul drawn (2) | | | 5 BANKS III D foul shooting (1 - 9) |
| 05:40 | 34 TSHIEBWE O free throw 1 - 1 made (8) | 29-25 | 4 | |
| 05:28 | | 29-27 | 2 | 12 RUPERT C 2pt FG in the paint, layup made (4) |
| 05:28 | | | | 32 MURRAY J assist (2) |
| 05:14 | 2 WHEELER S turnover bad pass (2) | | | 5 BANKS III D steal (1) |
| 04:57 | | | | 32 MURRAY J 2pt FG from turnover in the paint, floating jump shot missed |
| 04:52 | | | | 12 RUPERT C offensive rebound (4) |
| 04:52 | | | | 12 RUPERT C 2pt FG from turnover second chance in the paint, layup missed |
| 04:51 | 31 GRADY K defensive rebound (3) | | | |
| 04:48 | 0 TOPPIN J 2pt FG fast break in the paint, dunk, made (6) | 31-27 | 4 | |
| 04:48 | 2 WHEELER S assist (3) | | | |
| 04:23 | | 31-30 | 1 | 5 BANKS III D 3pt FG , pull up jump shot made (13) |
| 04:07 | 34 TSHIEBWE O foul drawn (3) | | | 13 DASHER I foul shooting (1 - 10) |
| 04:07 | 34 TSHIEBWE O free throw 1 - 2 made (9) | 32-30 | 2 | |
| 04:07 | 31 GRADY K substitution out | | | |
| 04:07 | 10 MINTZ D substitution in | | | |
| 04:07 | | | | 12 RUPERT C substitution out |
| 04:07 | | | | 24 DIAHAME O substitution in |
| 04:07 | 34 TSHIEBWE O free throw 2 - 2 made (10) | 33-30 | 3 | |
| 03:54 | | 33-33 | 0 | 5 BANKS III D 3pt FG , pull up jump shot made (16) |
| 03:42 | 0 TOPPIN J 2pt FG in the paint, dunk, made (8) | 35-33 | 2 | |
| 03:42 | 34 TSHIEBWE O assist (1) | | | |



Official Basketball Play by Play - First Half

Saint Peter's at Kentucky

03/17/22 Gainbridge Fieldhouse, Indianapolis, IN
NCAA Division I Men's Basketball Championship - First Round

Game Time: 7:10 PM

Game Duration: 2:29

Officials: Joe Lindsay, Larry Spaulding, Edwin Young

| Game Time | UK | Score | Diff | SP |
|----------------------|---|--------------|----------|--|
| 03:17 | | | | 32 MURRAY J 2pt FG in the paint, floating jump shot missed |
| 03:14 | 34 TSHIEBWE O defensive rebound (5) | | | |
| 03:04 | 0 TOPPIN J turnover lost ball (1) | | | 32 MURRAY J steal (1) |
| 03:01 | | 35-35 | 0 | 32 MURRAY J 2pt FG fast break from turnover in the paint, driving layup made (5) |
| 03:01 | Timeout media | | | |
| 03:01 | | | | 14 DRAME H substitution out |
| 03:01 | | | | 10 DRAME F substitution in |
| 02:54 | 10 MINTZ D substitution out | | | |
| 02:54 | 31 GRADY K substitution in | | | |
| 02:39 | 34 TSHIEBWE O 2pt FG in the paint, layup made (12) | 37-35 | 2 | |
| 02:39 | 2 WHEELER S assist (4) | | | |
| 02:21 | | | | 5 BANKS III D 2pt FG outside the paint, jump shot missed |
| 02:17 | 2 WHEELER S defensive rebound (3) | | | |
| 02:10 | 3 WASHINGTON JR. T 2pt FG in the paint, floating jump shot missed | | | |
| 02:08 | offensive rebound (16) | | | |
| 02:02 | 34 TSHIEBWE O turnover travel (2) | | | |
| 01:42 | 34 TSHIEBWE O steal (1) | | | 32 MURRAY J turnover lost ball (1) |
| 01:41 | 3 WASHINGTON JR. T turnover dribbling violation (2) | | | |
| 01:41 | 3 WASHINGTON JR. T substitution out | | | |
| 01:41 | 10 MINTZ D substitution in | | | |
| 01:25 | | | | 13 DASHER I 3pt FG from turnover, jump shot missed |
| 01:21 | 34 TSHIEBWE O defensive rebound (6) | | | |
| 01:15 | 2 WHEELER S 2pt FG in the paint, driving layup missed | | | |
| 01:12 | | | | 5 BANKS III D defensive rebound (2) |
| 01:06 | | 37-37 | 0 | 10 DRAME F 2pt FG fast break in the paint, layup made (2) |
| 01:06 | | | | 5 BANKS III D assist (1) |
| 00:36 | 31 GRADY K 3pt FG , pull up jump shot missed | | | |
| 00:32 | | | | 32 MURRAY J defensive rebound (2) |
| 00:25 | | | | Timeout 30 Sec |
| 00:25 | Timeout media | | | |
| 00:25 | 34 TSHIEBWE O substitution out | | | |
| 00:25 | 55 WARE L substitution in | | | |
| 00:07 | | | | 13 DASHER I 3pt FG , jump shot missed |
| 00:04 | 31 GRADY K defensive rebound (4) | | | |
| 00:01 | 2 WHEELER S 2pt FG in the paint, driving layup missed | | | |
| 00:00 | offensive dead ball rebound (2) | | | |
| END OF PERIOD | | | | |
| UK 37-37 SP | | | | |



Saint Peter's at Kentucky

03/17/22 Gainbridge Fieldhouse, Indianapolis, IN
 NCAA Division I Men's Basketball Championship - First Round

Officials: Joe Lindsay, Larry Spaulding, Edwin Young

Saint Peter's - 37

| NO. | Name | F | Min | FG | | | Rebounds | | | Fouls | | TP | AS | TO | ST | Blocks | | +/- |
|---------------|-----------------|---|-------|-------|-----|-----|----------|----|-----|-------|----|----|----|----|----|--------|----|-----|
| | | | | M-A | M-A | M-A | OR | DR | TOT | PF | FD | | | | | BS | BA | |
| 11 | KC Ndefo | F | 01:31 | 0-0 | 0-0 | 0-0 | 0 | 0 | 0 | 2 | 0 | 0 | 3 | 0 | 0 | 0 | 0 | 0 |
| 12 | Clarence Rupert | F | 11:37 | 2-4 | 0-1 | 0-0 | 1 | 3 | 4 | 0 | 0 | 4 | 1 | 0 | 0 | 0 | 0 | 2 |
| 14 | Hassan Drame | F | 15:03 | 1-1 | 0-0 | 1-2 | 1 | 1 | 2 | 1 | 1 | 3 | 3 | 0 | 0 | 0 | 0 | -4 |
| 5 | Daryl Banks III | G | 15:18 | 6-9 | 4-4 | 0-0 | 0 | 2 | 2 | 1 | 1 | 16 | 1 | 0 | 1 | 0 | 1 | -2 |
| 15 | Matthew Lee | G | 08:26 | 0-4 | 0-1 | 0-0 | 0 | 0 | 0 | 0 | 0 | 0 | 1 | 0 | 0 | 0 | 1 | -6 |
| 10 | Fousseyni Drame | | 07:36 | 1-1 | 0-0 | 0-0 | 0 | 0 | 0 | 2 | 1 | 2 | 0 | 0 | 0 | 0 | 0 | 1 |
| 13 | Isiah Dasher | | 14:02 | 1-4 | 0-2 | 0-0 | 0 | 1 | 1 | 1 | 0 | 2 | 1 | 0 | 0 | 0 | 1 | 6 |
| 25 | Doug Edert | | 06:30 | 2-3 | 0-0 | 1-1 | 1 | 0 | 1 | 2 | 1 | 5 | 1 | 0 | 0 | 0 | 0 | -1 |
| 32 | Jaylen Murray | | 11:34 | 2-6 | 1-1 | 0-0 | 0 | 2 | 2 | 1 | 0 | 5 | 2 | 1 | 1 | 0 | 0 | 6 |
| 24 | Oumar Diahame | | 08:23 | 0-0 | 0-0 | 0-0 | 0 | 1 | 1 | 0 | 0 | 0 | 0 | 1 | 0 | 0 | 0 | -2 |
| Team | | | | | | | 0 | 0 | 0 | | | 0 | | 0 | | | | |
| Totals | | | | 15-32 | 5-9 | 2-3 | 3 | 10 | 13 | 10 | 4 | 37 | 10 | 5 | 2 | 0 | 3 | 0 |

| Shooting By Period | | |
|--------------------|-------|-------|
| 1st FG% | 15-32 | 46.9% |
| 3PT% | 5-9 | 55.6% |
| FT% | 2-3 | 66.7% |
| GM FG% | 15-32 | 46.9% |
| 3PT% | 5-9 | 55.6% |
| FT% | 2-3 | 66.7% |

Dead Ball Rebounds: 1, 0

Technical Fouls::NONE

Kentucky - 37

| NO. | Name | F | Min | FG | | | Rebounds | | | Fouls | | TP | AS | TO | ST | Blocks | | +/- |
|---------------|---------------------|---|-------|-------|-----|-------|----------|----|-----|-------|----|----|----|----|----|--------|----|-----|
| | | | | M-A | M-A | M-A | OR | DR | TOT | PF | FD | | | | | BS | BA | |
| 12 | Keion Brooks Jr. | F | 06:38 | 0-1 | 0-0 | 2-2 | 1 | 0 | 1 | 0 | 2 | 2 | 0 | 0 | 1 | 1 | 0 | 3 |
| 34 | Oscar Tshiebwe | F | 17:36 | 4-5 | 0-0 | 4-5 | 1 | 5 | 6 | 1 | 3 | 12 | 1 | 2 | 1 | 0 | 0 | 2 |
| 2 | Sahvir Wheeler | G | 17:21 | 1-5 | 1-2 | 0-0 | 0 | 3 | 3 | 1 | 1 | 3 | 4 | 2 | 0 | 0 | 0 | -4 |
| 3 | TyTy Washington Jr. | G | 14:50 | 1-4 | 0-0 | 0-0 | 0 | 1 | 1 | 1 | 0 | 2 | 0 | 2 | 0 | 0 | 0 | 3 |
| 31 | Kellan Grady | G | 16:51 | 0-3 | 0-3 | 5-6 | 0 | 4 | 4 | 0 | 3 | 5 | 3 | 0 | 0 | 0 | 0 | 6 |
| 0 | Jacob Toppin | | 13:22 | 3-3 | 0-0 | 2-2 | 0 | 1 | 1 | 0 | 1 | 8 | 1 | 1 | 0 | 1 | 0 | -3 |
| 10 | Davion Mintz | | 10:58 | 2-3 | 1-2 | 0-0 | 1 | 0 | 1 | 1 | 0 | 5 | 0 | 0 | 0 | 0 | 0 | -5 |
| 55 | Lance Ware | | 02:24 | 0-1 | 0-0 | 0-0 | 0 | 0 | 0 | 0 | 0 | 0 | 0 | 0 | 0 | 1 | 0 | -2 |
| Team | | | | | | | 1 | 0 | 1 | | | 0 | | 0 | | | | |
| Totals | | | | 11-25 | 2-7 | 13-15 | 4 | 14 | 18 | 4 | 10 | 37 | 9 | 7 | 2 | 3 | 0 | 0 |

| Shooting By Period | | |
|--------------------|-------|-------|
| 1st FG% | 11-25 | 44.0% |
| 3PT% | 2-7 | 28.6% |
| FT% | 13-15 | 86.7% |
| GM FG% | 11-25 | 44.0% |
| 3PT% | 2-7 | 28.6% |
| FT% | 13-15 | 86.7% |

Dead Ball Rebounds: 2, 0

Technical Fouls::NONE

| | SP | UK |
|------------------|---------------|--------------|
| Biggest lead | 5 (1st 12:46) | 4 (1st 7:46) |
| Best Scoring Run | 4(1st 12:46) | 5(1st 8:48) |
| Lead Changes | 4 | |
| Times Tied | 8 | |
| Time with Lead | 04:28 | 08:36 |

| Points from | SP | UK |
|---------------|----|----|
| Turnovers | 5 | 2 |
| Paint | 16 | 14 |
| Second Chance | 5 | 5 |
| Fast Breaks | 6 | 4 |
| Bench | 14 | 13 |

| | Period by Period Scoring | | | |
|----|--------------------------|-----|-----|-----|
| | 1st | 2nd | OT1 | TOT |
| SP | 37 | 34 | 14 | 85 |
| UK | 37 | 34 | 8 | 79 |



Officials: Joe Lindsay, Larry Spaulding, Edwin Young

Period 2

Quarter Starters:

| | | | | | |
|-----------|---------------|--------------------|-----------------|------------|---------------|
| UK | 2 Wheeler S | 3 Washington Jr. T | 12 Brooks Jr. K | 31 Grady K | 34 Tshiebwe O |
| SP | 5 Banks III D | 11 Ndefo K | 12 Rupert C | 14 Drame H | 15 Lee M |

| Game Time | UK | Score | Diff | SP |
|-----------|---|--------------|-----------|---|
| 20:00 | 0 TOPPIN J substitution out | | | |
| 20:00 | 10 MINTZ D substitution out | | | |
| 20:00 | 55 WARE L substitution out | | | |
| 20:00 | 3 WASHINGTON JR. T substitution in | | | |
| 20:00 | 12 BROOKS JR. K substitution in | | | |
| 20:00 | 34 TSHIEBWE O substitution in | | | |
| 20:00 | | | | 10 DRAME F substitution out |
| 20:00 | | | | 13 DASHER I substitution out |
| 20:00 | | | | 24 DIAHAME O substitution out |
| 20:00 | | | | 32 MURRAY J substitution out |
| 20:00 | | | | 11 NDEFO K substitution in |
| 20:00 | | | | 12 RUPERT C substitution in |
| 20:00 | | | | 14 DRAME H substitution in |
| 20:00 | | | | 15 LEE M substitution in |
| 19:39 | | | | 5 BANKS III D 2pt FG in the paint, driving layup missed |
| 19:38 | | | | offensive rebound (14) |
| 19:24 | | | | 14 DRAME H 2pt FG second chance in the paint, driving layup blocked |
| 19:24 | 34 TSHIEBWE O block (1) | | | |
| 19:21 | 34 TSHIEBWE O defensive rebound (7) | | | |
| 19:19 | 2 WHEELER S foul drawn (2) | | | 15 LEE M foul personal (1 - 1) |
| 19:07 | 34 TSHIEBWE O 2pt FG outside the paint, jump shot missed | | | |
| 19:04 | | | | 14 DRAME H defensive rebound (3) |
| 18:47 | 2 WHEELER S foul personal (2 - 1) | | | 15 LEE M foul drawn (1) |
| 18:33 | | | | 11 NDEFO K 3pt FG , jump shot missed |
| 18:30 | 34 TSHIEBWE O defensive rebound (8) | | | |
| 18:22 | 3 WASHINGTON JR. T 2pt FG in the paint, driving layup missed | | | |
| 18:18 | 34 TSHIEBWE O offensive rebound (9) | | | |
| 18:18 | 34 TSHIEBWE O 2pt FG second chance in the paint, layup missed | | | |
| 18:18 | 34 TSHIEBWE O offensive rebound (10) | | | |
| 18:18 | 34 TSHIEBWE O foul drawn (4) | | | 12 RUPERT C foul shooting (1 - 2) |
| 18:18 | 34 TSHIEBWE O free throw 1 - 2 missed | | | |
| 18:18 | offensive dead ball rebound (3) | | | |
| 18:18 | 34 TSHIEBWE O free throw 2 - 2 made (13) | 38-37 | 1 | |
| 17:53 | 34 TSHIEBWE O steal (2) | | | 5 BANKS III D turnover bad pass (1) |
| 17:49 | 12 BROOKS JR. K 2pt FG from turnover in the paint, driving layup missed | | | |
| 17:46 | | | | 14 DRAME H defensive rebound (4) |
| 17:27 | 31 GRADY K steal (1) | | | 12 RUPERT C turnover lost ball (1) |
| 17:23 | 31 GRADY K 2pt FG from turnover in the paint, layup blocked | | | |
| 17:23 | | | | 14 DRAME H block (1) |
| 17:20 | | | | 11 NDEFO K defensive rebound (1) |
| 17:17 | | 38-40 | -2 | 5 BANKS III D 3pt FG fast break, jump shot made (19) |



Saint Peter's at Kentucky

03/17/22 Gainbridge Fieldhouse, Indianapolis, IN

NCAA Division I Men's Basketball Championship - First Round

Officials: Joe Lindsay, Larry Spaulding, Edwin Young

| Game Time | UK | Score | Diff | SP |
|-----------|---|--------------|----------|---|
| 17:17 | | | | 15 LEE M assist (2) |
| 16:58 | 34 TSHIEBWE O 2pt FG in the paint, layup missed | | | |
| 16:54 | | | | 5 BANKS III D defensive rebound (3) |
| 16:43 | | | | 5 BANKS III D turnover bad pass (2) |
| 16:28 | 2 WHEELER S turnover lost ball (3) | | | |
| 16:28 | 2 WHEELER S substitution out | | | |
| 16:28 | 10 MINTZ D substitution in | | | |
| 16:10 | | | | 12 RUPERT C turnover bad pass (2) |
| 15:59 | 34 TSHIEBWE O 2pt FG from turnover outside the paint, jump shot made (15) | 40-40 | 0 | |
| 15:59 | 3 WASHINGTON JR. T assist (1) | | | |
| 15:40 | | | | 5 BANKS III D 2pt FG outside the paint, step back jump shot missed |
| 15:36 | 10 MINTZ D defensive rebound (2) | | | |
| 15:31 | 10 MINTZ D 3pt FG , jump shot missed | | | |
| 15:27 | 12 BROOKS JR. K offensive rebound (2) | | | |
| 15:27 | 12 BROOKS JR. K 2pt FG second chance in the paint, layup made (4) | 42-40 | 2 | |
| 15:11 | 10 MINTZ D foul personal (2 - 2) | | | 15 LEE M foul drawn (2) |
| 15:11 | Timeout media | | | |
| 15:05 | | | | 5 BANKS III D 3pt FG , jump shot missed |
| 15:02 | 34 TSHIEBWE O defensive rebound (11) | | | |
| 14:43 | 34 TSHIEBWE O 2pt FG in the paint, layup made (17) | 44-40 | 4 | |
| 14:43 | 10 MINTZ D assist (1) | | | |
| 14:43 | 34 TSHIEBWE O foul drawn (5) | | | 12 RUPERT C foul shooting (2 - 3) |
| 14:43 | | | | 12 RUPERT C substitution out |
| 14:43 | | | | 13 DASHER I substitution in |
| 14:43 | 34 TSHIEBWE O free throw 1 - 1 made (18) | 45-40 | 5 | |
| 14:28 | | | | 11 NDEFO K turnover (4) |
| 14:07 | turnover shot clock (9) | | | |
| 14:07 | 31 GRADY K substitution out | | | |
| 14:07 | 2 WHEELER S substitution in | | | |
| 14:07 | | | | 14 DRAME H substitution out |
| 14:07 | | | | 10 DRAME F substitution in |
| 13:46 | | 45-42 | 3 | 15 LEE M 2pt FG from turnover outside the paint, pull up jump shot made (2) |
| 13:29 | 10 MINTZ D 2pt FG in the paint, driving layup made (7) | 47-42 | 5 | |
| 13:29 | 10 MINTZ D foul drawn (1) | | | 11 NDEFO K foul shooting (3 - 4) |
| 13:29 | 3 WASHINGTON JR. T substitution out | | | |
| 13:29 | 31 GRADY K substitution in | | | |
| 13:29 | 10 MINTZ D free throw 1 - 1 missed | | | |
| 13:27 | | | | 10 DRAME F defensive rebound (1) |
| 13:15 | | | | 13 DASHER I turnover bad pass (1) |
| 13:15 | 12 BROOKS JR. K substitution out | | | |
| 13:15 | 0 TOPPIN J substitution in | | | |
| 13:15 | | | | 5 BANKS III D substitution out |
| 13:15 | | | | 25 EDERT D substitution in |
| 12:54 | 34 TSHIEBWE O foul offensive (2 - 3) | | | 10 DRAME F foul drawn (2) |
| 12:54 | 34 TSHIEBWE O turnover offensive (3) | | | |
| 12:54 | | | | 15 LEE M substitution out |



Saint Peter's at Kentucky

03/17/22 Gainbridge Fieldhouse, Indianapolis, IN

NCAA Division I Men's Basketball Championship - First Round

Officials: Joe Lindsay, Larry Spaulding, Edwin Young

| Game Time | UK | Score | Diff | SP |
|-----------|--|--------------|-----------|--|
| 12:54 | | | | 32 MURRAY J substitution in |
| 12:38 | 10 MINTZ D foul shooting (3 - 4) | | | 25 EDERT D foul drawn (2) |
| 12:38 | | 47-43 | 4 | 25 EDERT D free throw 1 - 2 made (6) |
| 12:38 | 10 MINTZ D substitution out | | | |
| 12:38 | 3 WASHINGTON JR. T substitution in | | | |
| 12:38 | | 47-44 | 3 | 25 EDERT D free throw 2 - 2 made (7) |
| 12:14 | 31 GRADY K 2pt FG in the paint, floating jump shot missed | | | |
| 12:11 | 31 GRADY K offensive rebound (5) | | | |
| 12:01 | 34 TSHIEBWE O 2pt FG second chance in the paint, layup missed | | | |
| 11:58 | 34 TSHIEBWE O offensive rebound (12) | | | |
| 11:58 | 34 TSHIEBWE O 2pt FG second chance in the paint, layup made (20) | 49-44 | 5 | |
| 11:41 | | 49-46 | 3 | 11 NDEFO K 2pt FG in the paint, driving layup made (2) |
| 11:41 | | | | 25 EDERT D assist (2) |
| 11:32 | 3 WASHINGTON JR. T foul drawn (1) | | | 13 DASHER I foul personal (2 - 5) |
| 11:32 | Timeout media | | | |
| 11:22 | 0 TOPPIN J foul drawn (2) | | | 13 DASHER I foul personal (3 - 6) |
| 11:14 | 3 WASHINGTON JR. T 2pt FG outside the paint, jump shot missed | | | |
| 11:11 | 3 WASHINGTON JR. T offensive rebound (2) | | | |
| 11:10 | 3 WASHINGTON JR. T 3pt FG second chance, jump shot missed | | | |
| 11:07 | | | | 25 EDERT D defensive rebound (2) |
| 10:48 | | 49-48 | 1 | 11 NDEFO K 2pt FG in the paint, hook shot made (4) |
| 10:30 | 0 TOPPIN J foul drawn (3) | | | 13 DASHER I foul shooting (4 - 7) |
| 10:30 | 0 TOPPIN J free throw 1 - 2 made (9) | 50-48 | 2 | |
| 10:30 | | | | 13 DASHER I substitution out |
| 10:30 | | | | 5 BANKS III D substitution in |
| 10:30 | 0 TOPPIN J free throw 2 - 2 missed | | | |
| 10:28 | | | | 11 NDEFO K defensive rebound (2) |
| 10:10 | 0 TOPPIN J substitution out | | | |
| 10:10 | 12 BROOKS JR. K substitution in | | | |
| 10:05 | 2 WHEELER S foul personal (3 - 5) | | | 32 MURRAY J foul drawn (1) |
| 09:50 | | 50-50 | 0 | 5 BANKS III D 2pt FG in the paint, driving layup made (21) |
| 09:38 | 34 TSHIEBWE O 2pt FG in the paint, layup made (22) | 52-50 | 2 | |
| 09:38 | 12 BROOKS JR. K assist (1) | | | |
| 09:13 | | 52-53 | -1 | 32 MURRAY J 3pt FG , step back jump shot made (8) |
| 08:56 | 12 BROOKS JR. K 2pt FG in the paint, pull up jump shot missed | | | |
| 08:53 | 34 TSHIEBWE O offensive rebound (13) | | | |
| 08:51 | 31 GRADY K 3pt FG second chance, jump shot missed | | | |
| 08:47 | | | | 32 MURRAY J defensive rebound (3) |
| 08:24 | | | | 11 NDEFO K 2pt FG in the paint, layup blocked |
| 08:24 | 34 TSHIEBWE O block (2) | | | |
| 08:20 | | | | 10 DRAME F offensive rebound (2) |
| 08:20 | | 52-55 | -3 | 10 DRAME F 2pt FG second chance in the paint, layup made (4) |
| 08:17 | 12 BROOKS JR. K 2pt FG fast break in the paint, layup made (6) | 54-55 | -1 | |
| 08:17 | 2 WHEELER S assist (5) | | | |
| 08:17 | 12 BROOKS JR. K foul drawn (3) | | | 10 DRAME F foul shooting (3 - 8) |
| 08:17 | 31 GRADY K substitution out | | | |



Saint Peter's at Kentucky

03/17/22 Gainbridge Fieldhouse, Indianapolis, IN
 NCAA Division I Men's Basketball Championship - First Round

Officials: Joe Lindsay, Larry Spaulding, Edwin Young

| Game Time | UK | Score | Diff | SP |
|-----------|--|--------------|-----------|--|
| 08:17 | 10 MINTZ D substitution in | | | |
| 08:17 | | | | 10 DRAME F substitution out |
| 08:17 | | | | 14 DRAME H substitution in |
| 08:17 | 12 BROOKS JR. K free throw fast break 1 - 1 missed | | | |
| 08:16 | 10 MINTZ D offensive rebound (3) | | | |
| 08:14 | 10 MINTZ D 2pt FG second chance in the paint, layup blocked | | | |
| 08:14 | | | | 11 NDEFO K block (1) |
| 08:13 | offensive rebound (31) | | | |
| 08:07 | 2 WHEELER S 2pt FG second chance outside the paint, pull up jump shot made (5) | 56-55 | 1 | |
| 07:41 | | | | 25 EDERT D 2pt FG in the paint, driving layup missed |
| 07:38 | | | | offensive rebound (24) |
| 07:38 | Timeout media | | | |
| 07:30 | 3 WASHINGTON JR. T foul shooting (2 - 6) | | | 25 EDERT D foul drawn (3) |
| 07:30 | | 56-56 | 0 | 25 EDERT D free throw 1 - 3 made (8) |
| 07:30 | | 56-57 | -1 | 25 EDERT D free throw 2 - 3 made (9) |
| 07:30 | | 56-58 | -2 | 25 EDERT D free throw 3 - 3 made (10) |
| 07:17 | 34 TSHIEBWE O 2pt FG in the paint, layup made (24) | 58-58 | 0 | |
| 07:17 | 12 BROOKS JR. K assist (2) | | | |
| 06:47 | | | | 5 BANKS III D 2pt FG in the paint, driving layup blocked |
| 06:47 | 12 BROOKS JR. K block (2) | | | |
| 06:47 | | | | offensive rebound (25) |
| 06:43 | 12 BROOKS JR. K foul shooting (1 - 7) | | | 11 NDEFO K foul drawn (1) |
| 06:43 | | 58-59 | -1 | 11 NDEFO K free throw 1 - 2 made (5) |
| 06:43 | | 58-60 | -2 | 11 NDEFO K free throw 2 - 2 made (6) |
| 06:43 | 3 WASHINGTON JR. T substitution out | | | |
| 06:43 | 31 GRADY K substitution in | | | |
| 06:43 | | | | 11 NDEFO K substitution out |
| 06:43 | | | | 12 RUPERT C substitution in |
| 06:23 | 2 WHEELER S 2pt FG in the paint, driving layup made (7) | 60-60 | 0 | |
| 06:23 | 10 MINTZ D assist (2) | | | |
| 06:23 | 2 WHEELER S foul drawn (3) | | | 12 RUPERT C foul shooting (3 - 9) |
| 06:23 | 2 WHEELER S free throw 1 - 1 made (8) | 61-60 | 1 | |
| 06:05 | 10 MINTZ D steal (1) | | | 25 EDERT D turnover bad pass (1) |
| 05:56 | 2 WHEELER S foul drawn (4) | | | 32 MURRAY J foul shooting (2 - 10) |
| 05:56 | 2 WHEELER S free throw 1 - 2 made (9) | 62-60 | 2 | |
| 05:56 | | | | 32 MURRAY J substitution out |
| 05:56 | | | | 15 LEE M substitution in |
| 05:56 | 2 WHEELER S free throw 2 - 2 missed | | | |
| 05:53 | | | | 14 DRAME H defensive rebound (5) |
| 05:35 | | | | 5 BANKS III D turnover bad pass (3) |
| 05:22 | 12 BROOKS JR. K foul drawn (4) | | | 14 DRAME H foul personal (2 - 11) |
| 05:22 | 12 BROOKS JR. K free throw 1 - 2 made (7) | 63-60 | 3 | |
| 05:22 | 12 BROOKS JR. K free throw 2 - 2 made (8) | 64-60 | 4 | |
| 05:05 | | 64-62 | 2 | 12 RUPERT C 2pt FG in the paint, layup made (6) |
| 05:05 | | | | 14 DRAME H assist (4) |
| 04:57 | 34 TSHIEBWE O foul drawn (6) | | | 14 DRAME H foul shooting (3 - 12) |
| 04:57 | 34 TSHIEBWE O free throw 1 - 2 made (25) | 65-62 | 3 | |
| 04:57 | | | | 12 RUPERT C substitution out |



Saint Peter's at Kentucky

03/17/22 Gainbridge Fieldhouse, Indianapolis, IN

NCAA Division I Men's Basketball Championship - First Round

Officials: Joe Lindsay, Larry Spaulding, Edwin Young

| Game Time | UK | Score | Diff | SP |
|----------------------|---|--------------|-----------|--|
| 04:57 | | | | 11 NDEFO K substitution in |
| 04:57 | 34 TSHIEBWE O free throw 2 - 2 made (26) | 66-62 | 4 | |
| 04:39 | | | | 5 BANKS III D 3pt FG , jump shot missed |
| 04:35 | 2 WHEELER S defensive rebound (4) | | | |
| 04:12 | 2 WHEELER S 2pt FG in the paint, driving layup made (11) | 68-62 | 6 | |
| 04:06 | | | | Timeout 30 Sec |
| 04:06 | Timeout media | | | |
| 03:49 | | | | 11 NDEFO K turnover bad pass (5) |
| 03:23 | jump ball situation | | | |
| 03:16 | 2 WHEELER S turnover bad pass (4) | | | |
| 02:57 | | 68-64 | 4 | 5 BANKS III D 2pt FG from turnover in the paint, layup made (23) |
| 02:57 | | | | 11 NDEFO K assist (1) |
| 02:24 | 2 WHEELER S turnover bad pass (5) | | | 15 LEE M steal (1) |
| 02:19 | | | | 5 BANKS III D 3pt FG from turnover, jump shot missed |
| 02:16 | | | | 14 DRAME H offensive rebound (6) |
| 02:15 | | 68-66 | 2 | 14 DRAME H 2pt FG from turnover second chance in the paint, layup made (5) |
| 01:50 | 10 MINTZ D 2pt FG in the paint, driving layup missed | | | |
| 01:47 | | | | 11 NDEFO K defensive rebound (3) |
| 01:25 | | 68-69 | -1 | 25 EDERT D 3pt FG , jump shot made (13) |
| 01:25 | | | | 15 LEE M assist (3) |
| 01:18 | Timeout 60 Sec | | | |
| 01:18 | 10 MINTZ D substitution out | | | |
| 01:18 | 3 WASHINGTON JR. T substitution in | | | |
| 00:54 | 31 GRADY K 3pt FG , jump shot missed | | | |
| 00:51 | 34 TSHIEBWE O offensive rebound (14) | | | |
| 00:48 | 31 GRADY K 3pt FG second chance, jump shot made (8) | 71-69 | 2 | |
| 00:48 | 34 TSHIEBWE O assist (2) | | | |
| 00:23 | | 71-71 | 0 | 25 EDERT D 2pt FG in the paint, driving layup made (15) |
| 00:23 | | | | 15 LEE M assist (4) |
| 00:00 | 3 WASHINGTON JR. T 2pt FG outside the paint, jump shot missed | | | |
| 00:00 | offensive dead ball rebound (4) | | | |
| END OF PERIOD | | | | |
| UK 71-71 SP | | | | |



Saint Peter's at Kentucky

03/17/22 Gainbridge Fieldhouse, Indianapolis, IN
NCAA Division I Men's Basketball Championship - First Round

Officials: Joe Lindsay, Larry Spaulding, Edwin Young

Saint Peter's - 34

| NO. | Name | F | Min | FG | | | Rebounds | | | Fouls | | TP | AS | TO | ST | Blocks | | +/- |
|---------------|-----------------|---|-------|-------|-----|-----|----------|----|-----|-------|----|----|----|----|----|--------|----|-----|
| | | | | M-A | M-A | M-A | OR | DR | TOT | PF | FD | | | | | BS | BA | |
| 11 | KC Ndefo | F | 18:14 | 2-4 | 0-1 | 2-2 | 0 | 3 | 3 | 1 | 1 | 6 | 1 | 2 | 0 | 1 | 1 | 5 |
| 12 | Clarence Rupert | F | 07:03 | 1-1 | 0-0 | 0-0 | 0 | 0 | 0 | 3 | 0 | 2 | 0 | 2 | 0 | 0 | 0 | -9 |
| 14 | Hassan Drame | F | 14:10 | 1-2 | 0-0 | 0-0 | 1 | 3 | 4 | 2 | 0 | 2 | 1 | 0 | 0 | 1 | 1 | -6 |
| 5 | Daryl Banks III | G | 17:15 | 3-9 | 1-4 | 0-0 | 0 | 1 | 1 | 0 | 0 | 7 | 0 | 3 | 0 | 0 | 1 | -3 |
| 15 | Matthew Lee | G | 13:02 | 1-1 | 0-0 | 0-0 | 0 | 0 | 0 | 1 | 2 | 2 | 3 | 0 | 1 | 0 | 0 | -3 |
| 24 | Oumar Diahame | | 00:00 | 0-0 | 0-0 | 0-0 | 0 | 0 | 0 | 0 | 0 | 0 | 0 | 0 | 0 | 0 | 0 | 0 |
| 13 | Isiah Dasher | | 04:13 | 0-0 | 0-0 | 0-0 | 0 | 0 | 0 | 3 | 0 | 0 | 0 | 1 | 0 | 0 | 0 | 2 |
| 10 | Fousseyni Drame | | 05:50 | 1-1 | 0-0 | 0-0 | 1 | 1 | 2 | 1 | 1 | 2 | 0 | 0 | 0 | 0 | 0 | 6 |
| 25 | Doug Edert | | 13:15 | 2-3 | 1-1 | 5-5 | 0 | 1 | 1 | 0 | 2 | 10 | 1 | 1 | 0 | 0 | 0 | 5 |
| 32 | Jaylen Murray | | 06:58 | 1-1 | 1-1 | 0-0 | 0 | 1 | 1 | 1 | 1 | 3 | 0 | 0 | 0 | 0 | 0 | 3 |
| Team | | | | | | | 3 | 0 | 3 | | | 0 | | 0 | | | | |
| Totals | | | | 12-22 | 3-7 | 7-7 | 5 | 10 | 15 | 12 | 7 | 34 | 6 | 9 | 1 | 2 | 3 | 0 |

| Shooting By Period | | |
|--------------------|-------|--------|
| 2nd FG% | 12-22 | 54.5% |
| 3PT% | 3-7 | 42.9% |
| FT% | 7-7 | 100% |
| GM FG% | 12-22 | 54.5% |
| 3PT% | 3-7 | 42.9% |
| FT% | 7-7 | 100.0% |

Dead Ball Rebounds: 0, 0

Technical Fouls::NONE

Kentucky - 34

| NO. | Name | F | Min | FG | | | Rebounds | | | Fouls | | TP | AS | TO | ST | Blocks | | +/- |
|---------------|---------------------|---|-------|-------|-----|------|----------|----|-----|-------|----|----|----|----|----|--------|----|-----|
| | | | | M-A | M-A | M-A | OR | DR | TOT | PF | FD | | | | | BS | BA | |
| 12 | Keion Brooks Jr. | F | 16:55 | 2-4 | 0-0 | 2-3 | 1 | 0 | 1 | 1 | 2 | 6 | 2 | 0 | 0 | 1 | 0 | 3 |
| 34 | Oscar Tshiebwe | F | 20:00 | 5-9 | 0-0 | 4-5 | 5 | 3 | 8 | 1 | 3 | 14 | 1 | 1 | 1 | 2 | 0 | 0 |
| 2 | Sahvir Wheeler | G | 17:39 | 3-3 | 0-0 | 2-3 | 0 | 1 | 1 | 2 | 3 | 8 | 1 | 3 | 0 | 0 | 0 | -7 |
| 3 | TyTy Washington Jr. | G | 13:44 | 0-4 | 0-1 | 0-0 | 1 | 0 | 1 | 1 | 1 | 0 | 1 | 0 | 0 | 0 | 0 | 0 |
| 31 | Kellan Grady | G | 17:48 | 1-5 | 1-3 | 0-0 | 1 | 0 | 1 | 0 | 0 | 3 | 0 | 0 | 1 | 0 | 1 | 1 |
| 55 | Lance Ware | | 00:00 | 0-0 | 0-0 | 0-0 | 0 | 0 | 0 | 0 | 0 | 0 | 0 | 0 | 0 | 0 | 0 | 0 |
| 10 | Davion Mintz | | 10:49 | 1-4 | 0-1 | 0-1 | 1 | 1 | 2 | 2 | 1 | 2 | 2 | 0 | 1 | 0 | 1 | 6 |
| 0 | Jacob Toppin | | 03:05 | 0-0 | 0-0 | 1-2 | 0 | 0 | 0 | 0 | 2 | 1 | 0 | 0 | 0 | 0 | 0 | -3 |
| Team | | | | | | | 1 | 0 | 1 | | | 0 | | 1 | | | | |
| Totals | | | | 12-29 | 1-5 | 9-14 | 10 | 5 | 15 | 7 | 12 | 34 | 7 | 5 | 3 | 3 | 2 | 0 |

| Shooting By Period | | |
|--------------------|-------|-------|
| 2nd FG% | 12-29 | 41.4% |
| 3PT% | 1-5 | 20.0% |
| FT% | 9-14 | 64.3% |
| GM FG% | 12-29 | 41.4% |
| 3PT% | 1-5 | 20.0% |
| FT% | 9-14 | 64.3% |

Dead Ball Rebounds: 2, 0

Technical Fouls::NONE

| | SP | UK |
|------------------|--------------------------|--------------------------|
| Biggest lead | 3 (2 nd 8:20) | 6 (2 nd 4:12) |
| Best Scoring Run | 7(2 nd 1:25) | 7(2 nd 14:43) |
| Lead Changes | 9 | |
| Times Tied | 6 | |
| Time with Lead | 03:33 | 13:04 |

| Points from | SP | UK |
|---------------|----|----|
| Turnovers | 8 | 5 |
| Paint | 16 | 18 |
| Second Chance | 9 | 10 |
| Fast Breaks | 3 | 2 |
| Bench | 15 | 3 |

| Period by Period Scoring | | | | |
|--------------------------|-----|-----|-----|-----|
| | 1st | 2nd | OT1 | TOT |
| SP | 37 | 34 | 14 | 85 |
| UK | 37 | 34 | 8 | 79 |



Officials: Joe Lindsay, Larry Spaulding, Edwin Young

Overtime 1

Quarter Starters:

| | | | | | |
|-----------|---------------|--------------------|-----------------|------------|---------------|
| UK | 2 Wheeler S | 3 Washington Jr. T | 12 Brooks Jr. K | 31 Grady K | 34 Tshiebwe O |
| SP | 5 Banks III D | 11 Ndefo K | 14 Drame H | 15 Lee M | 25 Edert D |

| Game Time | UK | Score | Diff | SP |
|-----------|--|--------------|-----------|--|
| 05:00 | 34 TSHIEBWE O jumpball won | | | 11 NDEFO K jumpball lost |
| 04:35 | 34 TSHIEBWE O foul drawn (7) | | | 14 DRAME H foul personal (4 - 13) |
| 04:35 | 34 TSHIEBWE O free throw 1 - 2 missed | | | |
| 04:35 | offensive dead ball rebound (5) | | | |
| 04:35 | 34 TSHIEBWE O free throw 2 - 2 missed | | | |
| 04:34 | | | | 14 DRAME H defensive rebound (7) |
| 04:14 | | | | 5 BANKS III D 2pt FG in the paint, pull up jump shot missed |
| 04:11 | 12 BROOKS JR. K defensive rebound (3) | | | |
| 04:08 | 3 WASHINGTON JR. T 2pt FG in the paint, driving layup blocked | | | |
| 04:08 | | | | 15 LEE M block (1) |
| 04:05 | | | | 15 LEE M defensive rebound (1) |
| 04:04 | 12 BROOKS JR. K steal (2) | | | 15 LEE M turnover lost ball (1) |
| 04:01 | 34 TSHIEBWE O 2pt FG from turnover in the paint, layup made (28) | 73-71 | 2 | |
| 03:40 | 12 BROOKS JR. K foul personal (2 - 8) | | | 11 NDEFO K foul drawn (2) |
| 03:40 | 3 WASHINGTON JR. T substitution out | | | |
| 03:40 | 10 MINTZ D substitution in | | | |
| 03:40 | | | | 11 NDEFO K 1&1 free throw 1 missed |
| 03:38 | 34 TSHIEBWE O defensive rebound (15) | | | |
| 03:24 | 34 TSHIEBWE O 2pt FG in the paint, layup made (30) | 75-71 | 4 | |
| 03:24 | 2 WHEELER S assist (6) | | | |
| 03:05 | 34 TSHIEBWE O foul shooting (3 - 9) | | | 11 NDEFO K foul drawn (3) |
| 03:05 | | 75-72 | 3 | 11 NDEFO K free throw 1 - 2 made (7) |
| 03:05 | | | | 11 NDEFO K free throw 2 - 2 missed |
| 03:04 | 34 TSHIEBWE O defensive rebound (16) | | | |
| 02:57 | 2 WHEELER S foul drawn (5) | | | 15 LEE M foul personal (2 - 14) |
| 02:57 | 2 WHEELER S free throw 1 - 2 missed | | | |
| 02:57 | offensive dead ball rebound (6) | | | |
| 02:57 | 2 WHEELER S free throw 2 - 2 missed | | | |
| 02:55 | | | | 25 EDERT D defensive rebound (3) |
| 02:40 | | 75-75 | 0 | 25 EDERT D 3pt FG , jump shot made (18) |
| 02:40 | | | | 5 BANKS III D assist (2) |
| 02:05 | 10 MINTZ D foul drawn (2) | | | 5 BANKS III D foul shooting (2 - 15) |
| 02:05 | 10 MINTZ D free throw 1 - 2 made (8) | 76-75 | 1 | |
| 02:05 | 10 MINTZ D free throw 2 - 2 missed | | | |
| 02:04 | | | | 5 BANKS III D defensive rebound (4) |
| 01:45 | 10 MINTZ D foul personal (4 - 10) | | | 5 BANKS III D foul drawn (2) |
| 01:45 | | 76-76 | 0 | 5 BANKS III D free throw 1 - 2 made (24) |
| 01:45 | 10 MINTZ D substitution out | | | |
| 01:45 | 3 WASHINGTON JR. T substitution in | | | |
| 01:45 | | 76-77 | -1 | 5 BANKS III D free throw 2 - 2 made (25) |
| 01:26 | 2 WHEELER S turnover bad pass (6) | | | 14 DRAME H steal (1) |
| 01:02 | | 76-79 | -3 | 14 DRAME H 2pt FG from turnover in the paint, layup made (7) |



Official Basketball Play by Play - 1st OT

Saint Peter's at Kentucky

03/17/22 Gainbridge Fieldhouse, Indianapolis, IN
NCAA Division I Men's Basketball Championship - First Round

Game Time: 7:10 PM

Game Duration: 2:29

Officials: Joe Lindsay, Larry Spaulding, Edwin Young

| Game Time | UK | Score | Diff | SP |
|--------------------|--|--------------|-----------|--|
| 01:02 | | | | 11 NDEFO K assist (2) |
| 00:56 | Timeout 30 Sec | | | |
| 00:56 | Timeout media | | | |
| 00:42 | 12 BROOKS JR. K 2pt FG in the paint, layup blocked | | | |
| 00:42 | | | | 11 NDEFO K block (2) |
| 00:42 | | | | defensive rebound (33) |
| 00:31 | 2 WHEELER S foul personal (4 - 11) | | | 5 BANKS III D foul drawn (3) |
| 00:31 | | 76-80 | -4 | 5 BANKS III D free throw 1 - 2 made (26) |
| 00:31 | | 76-81 | -5 | 5 BANKS III D free throw 2 - 2 made (27) |
| 00:22 | 3 WASHINGTON JR. T 3pt FG , pull up jump shot made (5) | 79-81 | -2 | |
| 00:22 | 31 GRADY K assist (4) | | | |
| 00:21 | Timeout 30 Sec | | | |
| 00:21 | 2 WHEELER S substitution out | | | |
| 00:21 | 10 MINTZ D substitution in | | | |
| 00:20 | 3 WASHINGTON JR. T foul personal (3 - 12) | | | 15 LEE M foul drawn (3) |
| 00:20 | | 79-82 | -3 | 15 LEE M free throw 1 - 2 made (3) |
| 00:20 | | 79-83 | -4 | 15 LEE M free throw 2 - 2 made (4) |
| 00:11 | 31 GRADY K 3pt FG , jump shot missed | | | |
| 00:07 | | | | 25 EDERT D defensive rebound (4) |
| 00:07 | 10 MINTZ D foul personal (5 - 13) | | | 25 EDERT D foul drawn (4) |
| 00:07 | 10 MINTZ D substitution out | | | |
| 00:07 | 2 WHEELER S substitution in | | | |
| 00:07 | | 79-84 | -5 | 25 EDERT D free throw 1 - 2 made (19) |
| 00:07 | | 79-85 | -6 | 25 EDERT D free throw 2 - 2 made (20) |
| 00:04 | 12 BROOKS JR. K 3pt FG , jump shot missed | | | |
| 00:00 | | | | 14 DRAME H defensive rebound (8) |
| END OF GAME | | | | |
| UK 79-85 SP | | | | |



Officials: Joe Lindsay, Larry Spaulding, Edwin Young

Saint Peter's - 14

| NO. | Name | F | Min | FG | | | 3P | | | FT | | | Rebounds | | | Fouls | | TP | AS | TO | ST | Blocks | | +/- |
|---------------|-----------------|---|-------|-----|-----|------|-----|-----|----|----|-----|----|----------|----|----|-------|---|----|----|----|----|--------|---|-----|
| | | | | M-A | M-A | M-A | M-A | M-A | OR | DR | TOT | PF | FD | BS | BA | | | | | | | | | |
| 11 | KC Ndefo | F | 05:00 | 0-0 | 0-0 | 1-3 | 0 | 0 | 0 | 0 | 2 | 1 | 1 | 0 | 0 | 0 | 0 | 0 | 0 | 0 | 1 | 0 | 6 | |
| 12 | Clarence Rupert | F | 00:00 | 0-0 | 0-0 | 0-0 | 0 | 0 | 0 | 0 | 0 | 0 | 0 | 0 | 0 | 0 | 0 | 0 | 0 | 0 | 0 | 0 | 0 | |
| 14 | Hassan Drame | F | 05:00 | 1-1 | 0-0 | 0-0 | 0 | 2 | 2 | 1 | 0 | 2 | 0 | 0 | 1 | 0 | 0 | 1 | 0 | 0 | 0 | 6 | | |
| 5 | Daryl Banks III | G | 05:00 | 0-1 | 0-0 | 4-4 | 0 | 1 | 1 | 1 | 2 | 4 | 1 | 0 | 0 | 0 | 0 | 0 | 0 | 0 | 0 | 6 | | |
| 15 | Matthew Lee | G | 05:00 | 0-0 | 0-0 | 2-2 | 0 | 1 | 1 | 1 | 1 | 2 | 0 | 1 | 0 | 1 | 0 | 1 | 0 | 1 | 0 | 6 | | |
| 25 | Doug Edert | | 05:00 | 1-1 | 1-1 | 2-2 | 0 | 2 | 2 | 0 | 1 | 5 | 0 | 0 | 0 | 0 | 0 | 0 | 0 | 0 | 0 | 6 | | |
| Team | | | | | | | 0 | 1 | 1 | | | 0 | | | 0 | | | | | | | | | |
| Totals | | | | 2-3 | 1-1 | 9-11 | 0 | 7 | 7 | 3 | 6 | 14 | 2 | 1 | 1 | 2 | 0 | 6 | | | | | | |

| Shooting By Period | | |
|--------------------|------|--------|
| OT FG% | 2-3 | 66.7% |
| 3PT% | 1-1 | 100.0% |
| FT% | 9-11 | 81.8% |
| GM FG% | 2-3 | 66.7% |
| 3PT% | 1-1 | 100.0% |
| FT% | 9-11 | 81.8% |

Dead Ball Rebounds: 0, 0

Technical Fouls::NONE

Kentucky - 8

| NO. | Name | F | Min | FG | | | 3P | | | FT | | | Rebounds | | | Fouls | | TP | AS | TO | ST | Blocks | | +/- |
|---------------|---------------------|---|-------|-----|-----|-----|-----|-----|----|----|-----|----|----------|----|----|-------|---|----|----|----|----|--------|----|-----|
| | | | | M-A | M-A | M-A | M-A | M-A | OR | DR | TOT | PF | FD | BS | BA | | | | | | | | | |
| 12 | Keion Brooks Jr. | F | 05:00 | 0-2 | 0-1 | 0-0 | 0 | 1 | 1 | 1 | 0 | 0 | 0 | 0 | 0 | 0 | 0 | 0 | 0 | 1 | 0 | 1 | -6 | |
| 34 | Oscar Tshiebwe | F | 05:00 | 2-2 | 0-0 | 0-2 | 0 | 2 | 2 | 1 | 1 | 4 | 0 | 0 | 0 | 0 | 0 | 0 | 0 | 0 | 0 | 0 | -6 | |
| 2 | Sahvir Wheeler | G | 04:45 | 0-0 | 0-0 | 0-2 | 0 | 0 | 0 | 1 | 1 | 0 | 1 | 1 | 0 | 0 | 0 | 0 | 0 | 0 | 0 | 0 | -4 | |
| 3 | TyTy Washington Jr. | G | 03:05 | 1-2 | 1-1 | 0-0 | 0 | 0 | 0 | 1 | 0 | 3 | 0 | 0 | 0 | 0 | 0 | 0 | 0 | 0 | 1 | -4 | | |
| 31 | Kellan Grady | G | 05:00 | 0-1 | 0-1 | 0-0 | 0 | 0 | 0 | 0 | 0 | 0 | 1 | 0 | 0 | 0 | 0 | 0 | 0 | 0 | 0 | -6 | | |
| 10 | Davion Mintz | | 02:10 | 0-0 | 0-0 | 1-2 | 0 | 0 | 0 | 2 | 1 | 1 | 0 | 0 | 0 | 0 | 0 | 0 | 0 | 0 | 0 | -4 | | |
| Team | | | | | | | 0 | 0 | 0 | | | 0 | | | 0 | | | | | | | | | |
| Totals | | | | 3-7 | 1-3 | 1-6 | 0 | 3 | 3 | 6 | 3 | 8 | 2 | 1 | 1 | 0 | 2 | -6 | | | | | | |

| Shooting By Period | | |
|--------------------|-----|-------|
| OT FG% | 3-7 | 42.9% |
| 3PT% | 1-3 | 33.3% |
| FT% | 1-6 | 16.7% |
| GM FG% | 3-7 | 42.9% |
| 3PT% | 1-3 | 33.3% |
| FT% | 1-6 | 16.7% |

Dead Ball Rebounds: 2, 0

Technical Fouls::NONE

| | SP | UK |
|------------------|-----------------------------|-----------------------------|
| Biggest lead | 6 (1 st OT 0:07) | 4 (1 st OT 3:24) |
| Best Scoring Run | 6 (1 st OT 0:31) | 4 (1 st OT 3:24) |
| Lead Changes | 2 | |
| Times Tied | 2 | |
| Time with Lead | 01:45 | 01:41 |

| Points from | SP | UK |
|---------------|----|----|
| Turnovers | 2 | 2 |
| Paint | 2 | 4 |
| Second Chance | 0 | 0 |
| Fast Breaks | 0 | 0 |
| Bench | 5 | 1 |

| | Period by Period Scoring | | | |
|----|--------------------------|-----|-----|-----|
| | 1st | 2nd | OT1 | TOT |
| SP | 37 | 34 | 14 | 85 |
| UK | 37 | 34 | 8 | 79 |

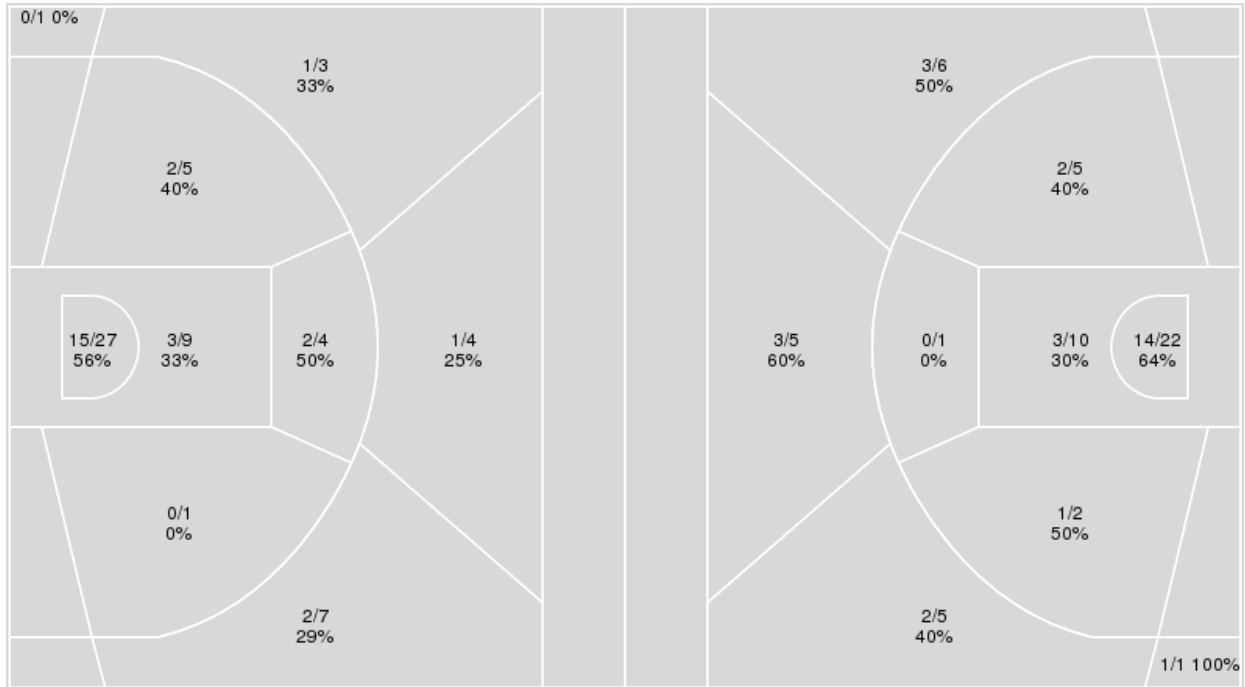


Officials: Joe Lindsay, Larry Spaulding, Edwin Young

{ Players => 0, 1, 2, 3, 4, 10, 11, 12, 14, 20, 21, 23, 25, 31, 34, 55; } FG { Players => All; } FG Types => All; Results => All;
 Types => All; Results => All;

Kentucky

Saint Peter's



| Kentucky | M/A | % |
|-------------|-------|----|
| Field Goals | 26/61 | 43 |
| 2 Points | 22/46 | 48 |
| 3 Points | 4/15 | 27 |
| Free Throws | 23/35 | 66 |

| Saint Peter's | M/A | % |
|---------------|-------|----|
| Field Goals | 29/57 | 51 |
| 2 Points | 20/40 | 50 |
| 3 Points | 9/17 | 53 |
| Free Throws | 18/21 | 86 |



Saint Peter's at Kentucky

03/17/22 Gainbridge Fieldhouse, Indianapolis, IN

NCAA Division I Men's Basketball Championship - First Round

Officials: Joe Lindsay, Larry Spaulding, Edwin Young

Saint Peter's

| No | Name | Mins | | Score | | Points Diff | | Points per Min | | Assists | | Rebounds | | Steals | | Turnovers | |
|----|-----------------|-------|-------|---------|---------|-------------|-----|----------------|------|---------|-----|----------|-----|--------|-----|-----------|-----|
| | | On | Off | On | Off | On | Off | On | Off | On | Off | On | Off | On | Off | On | Off |
| 5 | Daryl Banks III | 37:33 | 07:27 | 67 - 66 | 18 - 13 | 1 | 5 | 1.78 | 2.42 | 14 | 4 | 30 | 5 | 4 | 0 | 15 | 0 |
| 10 | Fousseyni Drame | 13:26 | 31:34 | 28 - 21 | 57 - 58 | 7 | -1 | 2.08 | 1.81 | 5 | 13 | 8 | 27 | 0 | 4 | 2 | 13 |
| 11 | KC Ndefo | 24:45 | 20:15 | 46 - 35 | 39 - 44 | 11 | -5 | 1.86 | 1.93 | 7 | 11 | 24 | 11 | 2 | 2 | 11 | 4 |
| 12 | Clarence Rupert | 18:40 | 26:20 | 28 - 35 | 57 - 44 | -7 | 13 | 1.50 | 2.16 | 8 | 10 | 16 | 19 | 1 | 3 | 9 | 6 |
| 13 | Isiah Dasher | 18:15 | 26:45 | 41 - 33 | 44 - 46 | 8 | -2 | 2.25 | 1.64 | 9 | 9 | 11 | 24 | 2 | 2 | 3 | 12 |
| 14 | Hassan Drame | 34:13 | 10:47 | 59 - 63 | 26 - 16 | -4 | 10 | 1.72 | 2.41 | 14 | 4 | 28 | 7 | 4 | 0 | 13 | 2 |
| 15 | Matthew Lee | 26:28 | 18:32 | 40 - 43 | 45 - 36 | -3 | 9 | 1.51 | 2.43 | 11 | 7 | 20 | 15 | 2 | 2 | 13 | 2 |
| 24 | Oumar Diahame | 08:23 | 36:37 | 14 - 16 | 71 - 63 | -2 | 8 | 1.67 | 1.94 | 4 | 14 | 3 | 32 | 1 | 3 | 2 | 13 |
| 25 | Doug Edert | 24:45 | 20:15 | 57 - 47 | 28 - 32 | 10 | -4 | 2.30 | 1.38 | 11 | 7 | 20 | 15 | 2 | 2 | 5 | 10 |
| 32 | Jaylen Murray | 18:32 | 26:28 | 45 - 36 | 40 - 43 | 9 | -3 | 2.43 | 1.51 | 7 | 11 | 15 | 20 | 2 | 2 | 2 | 13 |

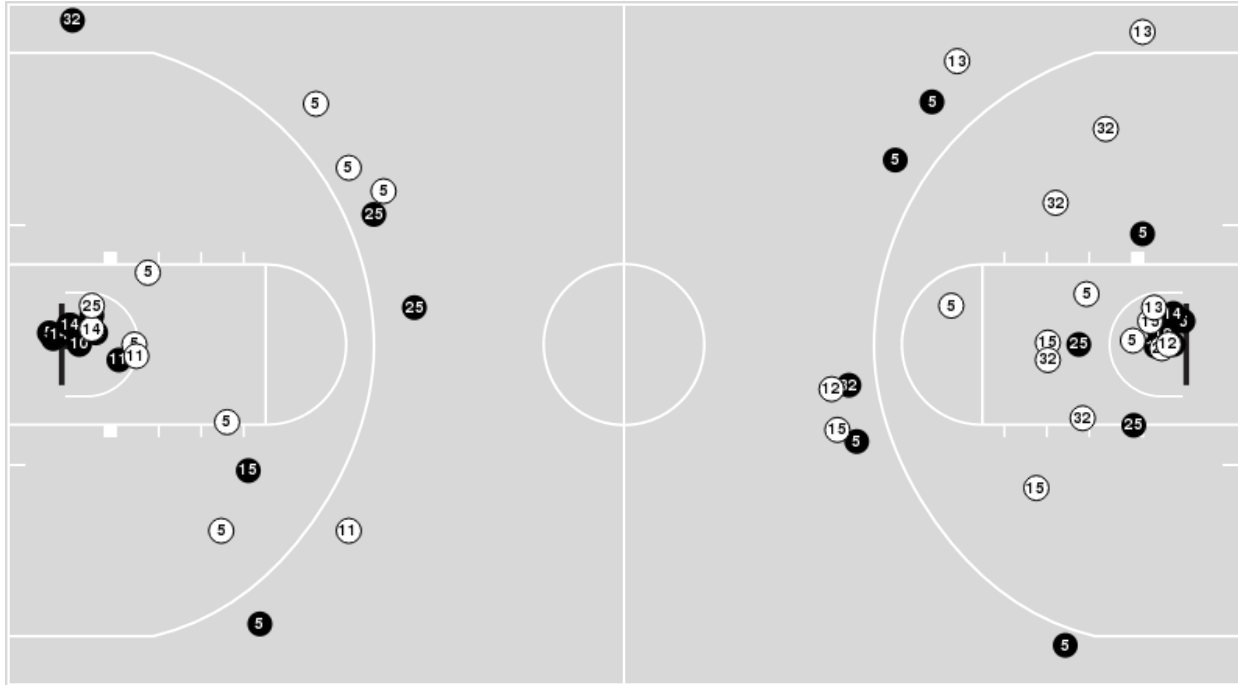
Kentucky

| No | Name | Mins | | Score | | Points Diff | | Points per Min | | Assists | | Rebounds | | Steals | | Turnovers | |
|----|---------------------|-------|-------|---------|---------|-------------|-----|----------------|------|---------|-----|----------|-----|--------|-----|-----------|-----|
| | | On | Off | On | Off | On | Off | On | Off | On | Off | On | Off | On | Off | On | Off |
| 0 | Jacob Toppin | 16:27 | 28:33 | 30 - 36 | 49 - 49 | -6 | 0 | 1.82 | 1.72 | 7 | 11 | 15 | 21 | 1 | 5 | 5 | 8 |
| 2 | Sahvir Wheeler | 39:45 | 05:15 | 65 - 80 | 14 - 5 | -15 | 9 | 1.64 | 2.67 | 14 | 4 | 31 | 5 | 6 | 0 | 12 | 1 |
| 3 | TyTy Washington Jr. | 31:39 | 13:21 | 59 - 60 | 20 - 25 | -1 | -5 | 1.86 | 1.50 | 14 | 4 | 28 | 8 | 5 | 1 | 10 | 3 |
| 10 | Davion Mintz | 23:57 | 21:03 | 48 - 51 | 31 - 34 | -3 | -3 | 2.00 | 1.47 | 11 | 7 | 16 | 20 | 1 | 5 | 5 | 8 |
| 12 | Keion Brooks Jr. | 28:33 | 16:27 | 49 - 49 | 30 - 36 | 0 | -6 | 1.72 | 1.82 | 11 | 7 | 21 | 15 | 5 | 1 | 8 | 5 |
| 31 | Kellan Grady | 39:39 | 05:21 | 65 - 64 | 14 - 21 | 1 | -7 | 1.64 | 2.62 | 15 | 3 | 33 | 3 | 6 | 0 | 12 | 1 |
| 34 | Oscar Tshiebwe | 42:36 | 02:24 | 76 - 80 | 3 - 5 | -4 | -2 | 1.78 | 1.25 | 17 | 1 | 34 | 2 | 6 | 0 | 13 | 0 |
| 55 | Lance Ware | 02:24 | 42:36 | 3 - 5 | 76 - 80 | -2 | -4 | 1.25 | 1.78 | 1 | 17 | 2 | 34 | 0 | 6 | 0 | 13 |

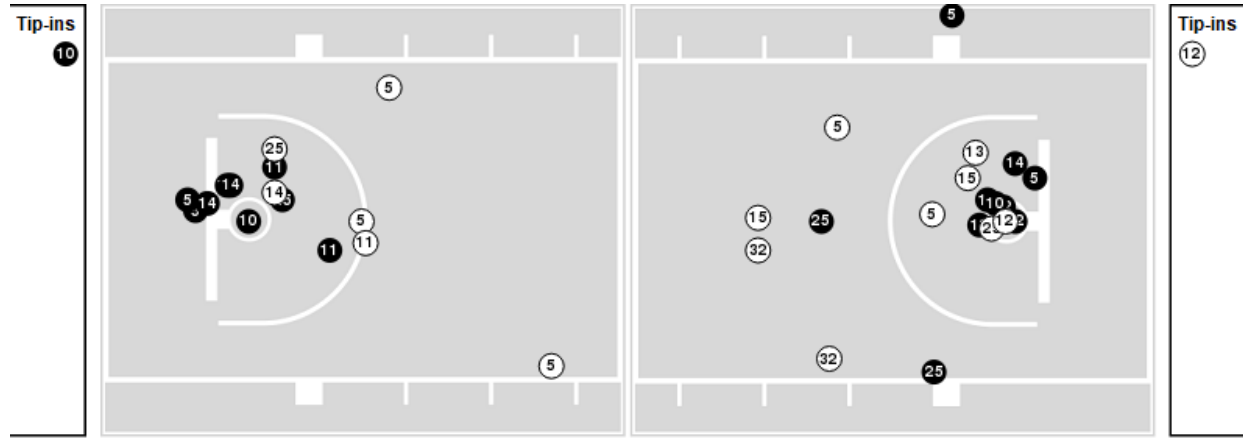


Players => AllFG Types=>AllResults=>All
Saint Peter's

All Field Goals



Blow Up Chart



● Made ○ Missed N - Player Number

| Saint Peter's | M/A | % |
|---------------|-------|----|
| Field Goals | 29/57 | 51 |
| 2 Points | 20/40 | 50 |
| 3 Points | 9/17 | 53 |
| Free Throws | 18/21 | 86 |

| Saint Peter's | M/A | % |
|----------------------|--------------|-----|
| Points in the Paint | 34 (17 / 32) | 53 |
| Fast Break Points | 9 (4/4) | 100 |
| Second Chance Points | 14 (9/11) | 82 |
| Effective FG% | 59 | |

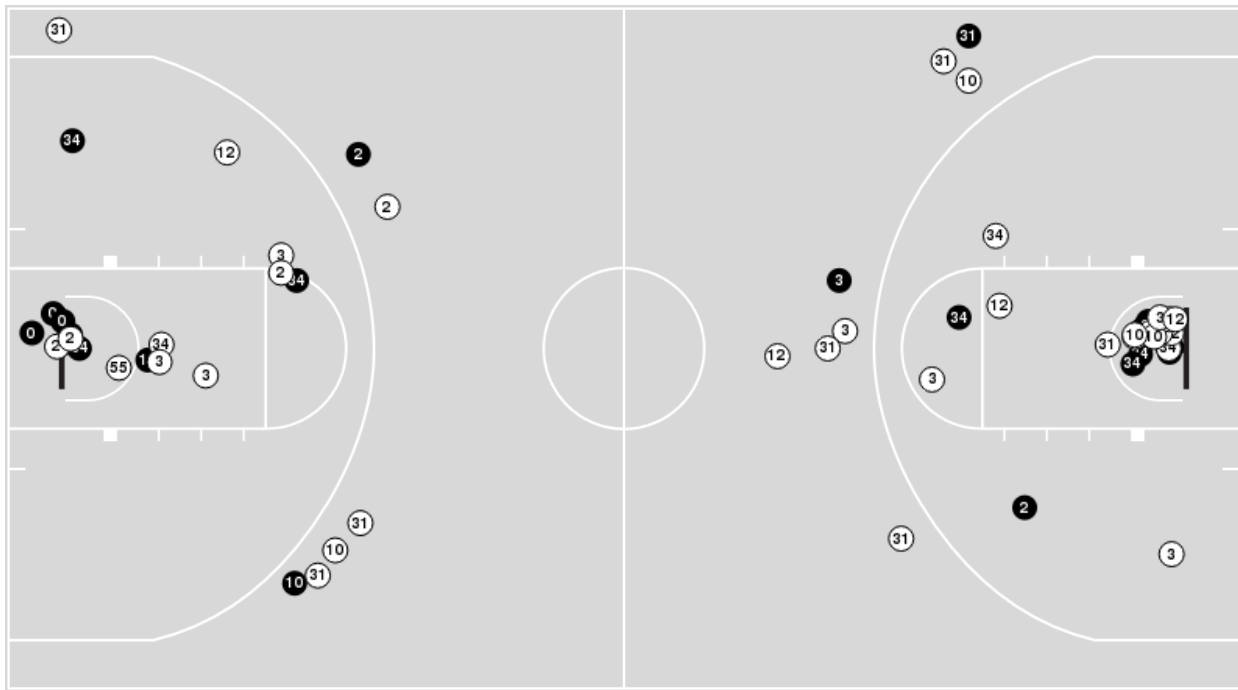


Officials: Joe Lindsay, Larry Spaulding, Edwin Young

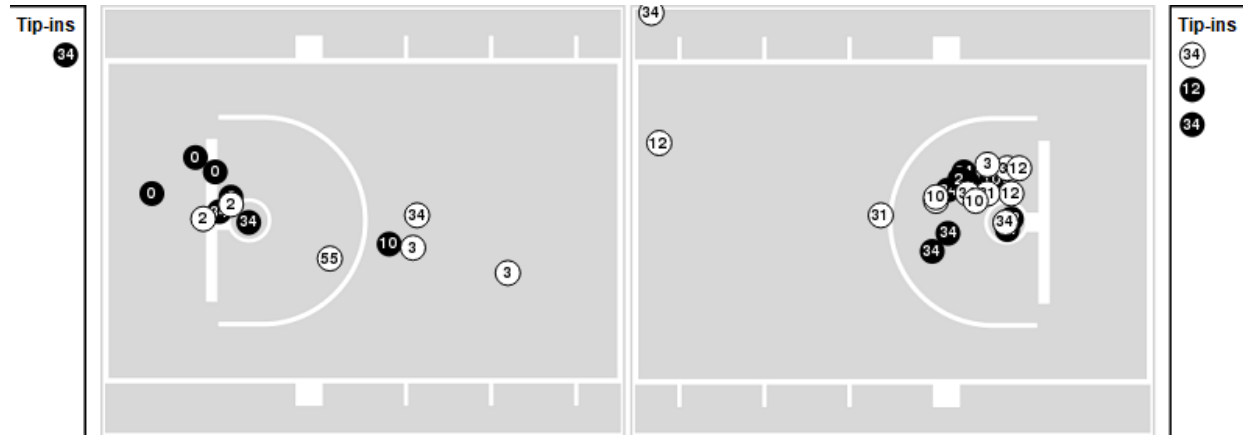
Players => 0, 1, 2, 3, 4, 10, 11, 12, 14, 20, 21, 23, 25, 31, 34, 55 FG Types=>All Results=>All

Kentucky

All Field Goals



Blow Up Chart



● Made ○ Missed N - Player Number

| Kentucky | M/A | % |
|-------------|-------|----|
| Field Goals | 26/61 | 43 |
| 2 Points | 22/46 | 48 |
| 3 Points | 4/15 | 27 |
| Free Throws | 23/35 | 66 |

| Kentucky | M/A | % |
|----------------------|--------------|----|
| Points in the Paint | 36 (18 / 36) | 50 |
| Fast Break Points | 6 (4/5) | 80 |
| Second Chance Points | 15 (9/16) | 56 |
| Effective FG% | 46 | |



Saint Peter's at Kentucky

03/17/22 Gainbridge Fieldhouse, Indianapolis, IN
 NCAA Division I Men's Basketball Championship - First Round

Officials: Joe Lindsay, Larry Spaulding, Edwin Young

Saint Peter's

| Lineup | Quarter On | Time On | Quarter Off | Time Off | Time on Court | Score | Score Diff | Reb | Stl | Tov | Ass | PPP |
|---|------------|---------|-------------|----------|---------------|-------|------------|-----|-----|-----|-----|--------|
| 5- Banks III D/ 11- Ndefo K/ 12- Rupert C/ 14- Drame H/ 15- Lee M/ | 1 | 20:00 | 1 | 18:29 | 01:31 | 0-0 | 0 | 3 | 0 | 3 | 0 | 0.0000 |
| 5- Banks III D/ 10- Drame F/ 12- Rupert C/ 14- Drame H/ 15- Lee M/ | 1 | 18:29 | 1 | 15:50 | 02:39 | 2-5 | -3 | 1 | 0 | 0 | 1 | 0.5000 |
| 5- Banks III D/ 10- Drame F/ 12- Rupert C/ 13- Dasher I/ 15- Lee M/ | 1 | 15:50 | 1 | 14:16 | 01:34 | 6-4 | 2 | 0 | 0 | 0 | 2 | 2.0000 |
| 10- Drame F/ 12- Rupert C/ 13- Dasher I/ 25- Edert D/ 32- Murray J/ | 1 | 14:16 | 1 | 13:54 | 00:22 | 3-1 | 2 | 0 | 0 | 0 | 0 | 3.0000 |
| 12- Rupert C/ 13- Dasher I/ 14- Drame H/ 25- Edert D/ 32- Murray J/ | 1 | 13:54 | 1 | 12:02 | 01:52 | 4-3 | 1 | 3 | 0 | 0 | 1 | 1.3333 |
| 13- Dasher I/ 14- Drame H/ 24- Diahame O/ 25- Edert D/ 32- Murray J/ | 1 | 12:02 | 1 | 09:34 | 02:28 | 5-6 | -1 | 1 | 0 | 0 | 2 | 1.1261 |
| 5- Banks III D/ 14- Drame H/ 15- Lee M/ 24- Diahame O/ 25- Edert D/ | 1 | 09:34 | 1 | 07:46 | 01:48 | 2-5 | -3 | 0 | 0 | 1 | 1 | 0.6667 |
| 5- Banks III D/ 12- Rupert C/ 13- Dasher I/ 14- Drame H/ 15- Lee M/ | 1 | 07:46 | 1 | 06:52 | 00:54 | 0-2 | -2 | 0 | 0 | 0 | 0 | 0.0000 |
| 5- Banks III D/ 12- Rupert C/ 13- Dasher I/ 14- Drame H/ 32- Murray J/ | 1 | 06:52 | 1 | 04:07 | 02:45 | 8-6 | 2 | 3 | 1 | 0 | 2 | 1.6393 |
| 5- Banks III D/ 13- Dasher I/ 14- Drame H/ 24- Diahame O/ 32- Murray J/ | 1 | 04:07 | 1 | 03:01 | 01:06 | 5-3 | 2 | 0 | 1 | 0 | 0 | 1.6667 |
| 5- Banks III D/ 10- Drame F/ 13- Dasher I/ 24- Diahame O/ 32- Murray J/ | 1 | 03:01 | 2 | 20:00 | 03:01 | 2-2 | 0 | 2 | 0 | 1 | 1 | 0.4000 |
| 5- Banks III D/ 11- Ndefo K/ 12- Rupert C/ 14- Drame H/ 15- Lee M/ | 2 | 20:00 | 2 | 14:43 | 05:17 | 3-7 | -4 | 5 | 0 | 4 | 1 | 0.3333 |
| 5- Banks III D/ 11- Ndefo K/ 13- Dasher I/ 14- Drame H/ 15- Lee M/ | 2 | 14:43 | 2 | 14:07 | 00:36 | 0-1 | -1 | 0 | 0 | 1 | 0 | 0.0000 |
| 5- Banks III D/ 10- Drame F/ 11- Ndefo K/ 13- Dasher I/ 15- Lee M/ | 2 | 14:07 | 2 | 13:15 | 00:52 | 2-2 | 0 | 1 | 0 | 1 | 0 | 1.0000 |
| 10- Drame F/ 11- Ndefo K/ 13- Dasher I/ 15- Lee M/ 25- Edert D/ | 2 | 13:15 | 2 | 12:54 | 00:21 | 0-0 | 0 | 0 | 0 | 0 | 0 | 0.0000 |
| 10- Drame F/ 11- Ndefo K/ 13- Dasher I/ 25- Edert D/ 32- Murray J/ | 2 | 12:54 | 2 | 10:30 | 02:24 | 6-3 | 3 | 1 | 0 | 0 | 1 | 2.0833 |
| 5- Banks III D/ 10- Drame F/ 11- Ndefo K/ 25- Edert D/ 32- Murray J/ | 2 | 10:30 | 2 | 08:17 | 02:13 | 7-4 | 3 | 3 | 0 | 0 | 0 | 2.3333 |
| 5- Banks III D/ 11- Ndefo K/ 14- Drame H/ 25- Edert D/ 32- Murray J/ | 2 | 08:17 | 2 | 06:43 | 01:34 | 5-4 | 1 | 2 | 0 | 0 | 0 | 2.2727 |
| 5- Banks III D/ 12- Rupert C/ 14- Drame H/ 25- Edert D/ 32- Murray J/ | 2 | 06:43 | 2 | 05:56 | 00:47 | 0-4 | -4 | 0 | 0 | 1 | 0 | 0.0000 |
| 5- Banks III D/ 12- Rupert C/ 14- Drame H/ 15- Lee M/ 25- Edert D/ | 2 | 05:56 | 2 | 04:57 | 00:59 | 2-3 | -1 | 1 | 0 | 1 | 1 | 1.0000 |
| 5- Banks III D/ 11- Ndefo K/ 14- Drame H/ 15- Lee M/ 25- Edert D/ | 2 | 04:57 | OT1 | 00:00 | 09:57 | 23-14 | 9 | 9 | 2 | 2 | 5 | 1.5499 |



Officials: Joe Lindsay, Larry Spaulding, Edwin Young

Kentucky

| Lineup | Quarter On | Time On | Quarter Off | Time Off | Time on Court | Score | Score Diff | Reb | Stl | Tov | Ass | PPP |
|---|------------|---------|-------------|----------|---------------|-------|------------|-----|-----|-----|-----|--------|
| 2- Wheeler S/3- Washington Jr. T/12- Brooks Jr. K/31- Grady K/34- Tshiebwe O/ | 1 | 20:00 | 1 | 15:50 | 04:10 | 5-2 | 3 | 4 | 1 | 3 | 1 | 0.6345 |
| 0- Toppin J/2- Wheeler S/3- Washington Jr. T/10- Mintz D/34- Tshiebwe O/ | 1 | 15:50 | 1 | 13:54 | 01:56 | 5-9 | -4 | 0 | 0 | 0 | 1 | 2.0492 |
| 0- Toppin J/2- Wheeler S/10- Mintz D/31- Grady K/34- Tshiebwe O/ | 1 | 13:54 | 1 | 12:02 | 01:52 | 4-4 | 0 | 2 | 0 | 0 | 1 | 1.2048 |
| 2- Wheeler S/10- Mintz D/12- Brooks Jr. K/31- Grady K/55- Ware L/ | 1 | 12:02 | 1 | 10:25 | 01:37 | 3-4 | -1 | 1 | 0 | 0 | 1 | 1.5000 |
| 3- Washington Jr. T/10- Mintz D/12- Brooks Jr. K/31- Grady K/55- Ware L/ | 1 | 10:25 | 1 | 10:04 | 00:21 | 0-1 | -1 | 0 | 0 | 0 | 0 | 0.0000 |
| 3- Washington Jr. T/10- Mintz D/12- Brooks Jr. K/31- Grady K/34- Tshiebwe O/ | 1 | 10:04 | 1 | 09:34 | 00:30 | 2-0 | 2 | 1 | 0 | 0 | 0 | 2.2727 |
| 0- Toppin J/3- Washington Jr. T/10- Mintz D/31- Grady K/34- Tshiebwe O/ | 1 | 09:34 | 1 | 07:46 | 01:48 | 5-2 | 3 | 1 | 0 | 0 | 2 | 2.0492 |
| 0- Toppin J/2- Wheeler S/3- Washington Jr. T/31- Grady K/34- Tshiebwe O/ | 1 | 07:46 | 1 | 04:07 | 03:39 | 8-8 | 0 | 4 | 0 | 1 | 1 | 1.1834 |
| 0- Toppin J/2- Wheeler S/3- Washington Jr. T/10- Mintz D/34- Tshiebwe O/ | 1 | 04:07 | 1 | 02:54 | 01:13 | 3-5 | -2 | 1 | 0 | 1 | 1 | 1.2295 |
| 0- Toppin J/2- Wheeler S/3- Washington Jr. T/31- Grady K/34- Tshiebwe O/ | 1 | 02:54 | 1 | 01:41 | 01:13 | 2-0 | 2 | 2 | 1 | 2 | 1 | 0.6667 |
| 0- Toppin J/2- Wheeler S/10- Mintz D/31- Grady K/34- Tshiebwe O/ | 1 | 01:41 | 1 | 00:25 | 01:15 | 0-2 | -2 | 1 | 0 | 0 | 0 | 0.0000 |
| 0- Toppin J/2- Wheeler S/10- Mintz D/31- Grady K/55- Ware L/ | 1 | 00:25 | 2 | 20:00 | 00:26 | 0-0 | 0 | 1 | 0 | 0 | 0 | 0.0000 |
| 2- Wheeler S/3- Washington Jr. T/12- Brooks Jr. K/31- Grady K/34- Tshiebwe O/ | 2 | 20:00 | 2 | 16:28 | 03:32 | 1-3 | -2 | 4 | 2 | 1 | 0 | 0.1701 |
| 3- Washington Jr. T/10- Mintz D/12- Brooks Jr. K/31- Grady K/34- Tshiebwe O/ | 2 | 16:28 | 2 | 14:07 | 02:21 | 7-0 | 7 | 3 | 0 | 1 | 2 | 1.5766 |
| 2- Wheeler S/3- Washington Jr. T/10- Mintz D/12- Brooks Jr. K/34- Tshiebwe O/ | 2 | 14:07 | 2 | 13:29 | 00:38 | 2-2 | 0 | 0 | 0 | 0 | 0 | 2.0000 |
| 2- Wheeler S/10- Mintz D/12- Brooks Jr. K/31- Grady K/34- Tshiebwe O/ | 2 | 13:29 | 2 | 13:15 | 00:14 | 0-0 | 0 | 0 | 0 | 0 | 0 | 0.0000 |
| 0- Toppin J/2- Wheeler S/10- Mintz D/31- Grady K/34- Tshiebwe O/ | 2 | 13:15 | 2 | 12:38 | 00:37 | 0-1 | -1 | 0 | 0 | 1 | 0 | 0.0000 |
| 0- Toppin J/2- Wheeler S/3- Washington Jr. T/31- Grady K/34- Tshiebwe O/ | 2 | 12:38 | 2 | 10:10 | 02:28 | 3-5 | -2 | 3 | 0 | 0 | 0 | 1.0417 |
| 2- Wheeler S/3- Washington Jr. T/12- Brooks Jr. K/31- Grady K/34- Tshiebwe O/ | 2 | 10:10 | 2 | 08:17 | 01:53 | 4-7 | -3 | 1 | 0 | 0 | 2 | 1.3333 |
| 2- Wheeler S/3- Washington Jr. T/10- Mintz D/12- Brooks Jr. K/34- Tshiebwe O/ | 2 | 08:17 | 2 | 06:43 | 01:34 | 4-5 | -1 | 2 | 0 | 0 | 1 | 2.7778 |
| 2- Wheeler S/10- Mintz D/12- Brooks Jr. K/31- Grady K/34- Tshiebwe O/ | 2 | 06:43 | 2 | 01:18 | 05:25 | 10-9 | 1 | 1 | 1 | 2 | 1 | 1.2376 |
| 2- Wheeler S/3- Washington Jr. T/12- Brooks Jr. K/31- Grady K/34- Tshiebwe O/ | 2 | 01:18 | OT1 | 03:40 | 02:38 | 5-2 | 3 | 2 | 1 | 0 | 1 | 1.0246 |
| 2- Wheeler S/10- Mintz D/12- Brooks Jr. K/31- Grady K/34- Tshiebwe O/ | OT1 | 03:40 | OT1 | 01:45 | 01:55 | 3-5 | -2 | 2 | 0 | 0 | 1 | 1.0870 |
| 2- Wheeler S/3- Washington Jr. T/12- Brooks Jr. K/31- Grady K/34- Tshiebwe O/ | OT1 | 01:45 | OT1 | 00:21 | 01:23 | 3-5 | -2 | 0 | 0 | 1 | 1 | 1.0000 |
| 3- Washington Jr. T/10- Mintz D/12- Brooks Jr. K/31- Grady K/34- Tshiebwe O/ | OT1 | 00:21 | OT1 | 00:07 | 00:15 | 0-2 | -2 | 0 | 0 | 0 | 0 | 0.0000 |
| 2- Wheeler S/3- Washington Jr. T/12- Brooks Jr. K/31- Grady K/34- Tshiebwe O/ | OT1 | 00:07 | OT1 | 00:00 | 00:07 | 0-2 | -2 | 0 | 0 | 0 | 0 | 0.0000 |



Saint Peter's at Kentucky

03/17/22 Gainbridge Fieldhouse, Indianapolis, IN

NCAA Division I Men's Basketball Championship - First Round

Officials: Joe Lindsay, Larry Spaulding, Edwin Young

Saint Peter's

| Lineup | Time | Score | Score Diff | Pts/Min | Reb | Stl | Tov | Ass | PPP |
|---|-------|-------|------------|---------|-----|-----|-----|-----|--------|
| 5- Banks III D/ 11- Ndefo K/ 14- Drame H/ 15- Lee M/ 25- Edert D/ | 09:57 | 23-14 | 9 | 2.3116 | 9 | 2 | 2 | 5 | 1.5499 |
| 5- Banks III D/ 11- Ndefo K/ 12- Rupert C/ 14- Drame H/ 15- Lee M/ | 06:48 | 3-7 | -4 | 0.4412 | 8 | 0 | 7 | 1 | 0.2500 |
| 5- Banks III D/ 10- Drame F/ 13- Dasher I/ 24- Diahame O/ 32- Murray J/ | 03:01 | 2-2 | 0 | 0.6630 | 2 | 0 | 1 | 1 | 0.4000 |
| 5- Banks III D/ 12- Rupert C/ 13- Dasher I/ 14- Drame H/ 32- Murray J/ | 02:45 | 8-6 | 2 | 2.9091 | 3 | 1 | 0 | 2 | 1.6393 |
| 5- Banks III D/ 10- Drame F/ 12- Rupert C/ 14- Drame H/ 15- Lee M/ | 02:39 | 2-5 | -3 | 0.7547 | 1 | 0 | 0 | 1 | 0.5000 |
| 13- Dasher I/ 14- Drame H/ 24- Diahame O/ 25- Edert D/ 32- Murray J/ | 02:28 | 5-6 | -1 | 2.0270 | 1 | 0 | 0 | 2 | 1.1261 |
| 10- Drame F/ 11- Ndefo K/ 13- Dasher I/ 25- Edert D/ 32- Murray J/ | 02:24 | 6-3 | 3 | 2.5000 | 1 | 0 | 0 | 1 | 2.0833 |
| 5- Banks III D/ 10- Drame F/ 11- Ndefo K/ 25- Edert D/ 32- Murray J/ | 02:13 | 7-4 | 3 | 3.1579 | 3 | 0 | 0 | 0 | 2.3333 |
| 12- Rupert C/ 13- Dasher I/ 14- Drame H/ 25- Edert D/ 32- Murray J/ | 01:52 | 4-3 | 1 | 2.1429 | 3 | 0 | 0 | 1 | 1.3333 |
| 5- Banks III D/ 14- Drame H/ 15- Lee M/ 24- Diahame O/ 25- Edert D/ | 01:48 | 2-5 | -3 | 1.1111 | 0 | 0 | 1 | 1 | 0.6667 |
| 5- Banks III D/ 10- Drame F/ 12- Rupert C/ 13- Dasher I/ 15- Lee M/ | 01:34 | 6-4 | 2 | 3.8298 | 0 | 0 | 0 | 2 | 2.0000 |
| 5- Banks III D/ 11- Ndefo K/ 14- Drame H/ 25- Edert D/ 32- Murray J/ | 01:34 | 5-4 | 1 | 3.1915 | 2 | 0 | 0 | 0 | 2.2727 |
| 5- Banks III D/ 13- Dasher I/ 14- Drame H/ 24- Diahame O/ 32- Murray J/ | 01:06 | 5-3 | 2 | 4.5455 | 0 | 1 | 0 | 0 | 1.6667 |
| 5- Banks III D/ 12- Rupert C/ 14- Drame H/ 15- Lee M/ 25- Edert D/ | 00:59 | 2-3 | -1 | 2.0339 | 1 | 0 | 1 | 1 | 1.0000 |
| 5- Banks III D/ 12- Rupert C/ 13- Dasher I/ 14- Drame H/ 15- Lee M/ | 00:54 | 0-2 | -2 | 0.0000 | 0 | 0 | 0 | 0 | 0.0000 |
| 5- Banks III D/ 10- Drame F/ 11- Ndefo K/ 13- Dasher I/ 15- Lee M/ | 00:52 | 2-2 | 0 | 2.3077 | 1 | 0 | 1 | 0 | 1.0000 |
| 5- Banks III D/ 12- Rupert C/ 14- Drame H/ 25- Edert D/ 32- Murray J/ | 00:47 | 0-4 | -4 | 0.0000 | 0 | 0 | 1 | 0 | 0.0000 |
| 5- Banks III D/ 11- Ndefo K/ 13- Dasher I/ 14- Drame H/ 15- Lee M/ | 00:36 | 0-1 | -1 | 0.0000 | 0 | 0 | 1 | 0 | 0.0000 |
| 10- Drame F/ 12- Rupert C/ 13- Dasher I/ 25- Edert D/ 32- Murray J/ | 00:22 | 3-1 | 2 | 8.1818 | 0 | 0 | 0 | 0 | 3.0000 |
| 10- Drame F/ 11- Ndefo K/ 13- Dasher I/ 15- Lee M/ 25- Edert D/ | 00:21 | 0-0 | 0 | 0.0000 | 0 | 0 | 0 | 0 | 0.0000 |



Saint Peter's at Kentucky

03/17/22 Gainbridge Fieldhouse, Indianapolis, IN

NCAA Division I Men's Basketball Championship - First Round

Officials: Joe Lindsay, Larry Spaulding, Edwin Young

Kentucky

| Lineup | Time | Score | Score Diff | Pts/Min | Reb | Stl | Tov | Ass | PPP |
|---|-------|-------|------------|---------|-----|-----|-----|-----|--------|
| 2- Wheeler S/ 3- Washington Jr. T/ 12- Brooks Jr. K/ 31- Grady K/ 34- Tshiebwe O/ | 13:43 | 18-21 | -3 | 1.3123 | 11 | 4 | 5 | 5 | 0.7020 |
| 2- Wheeler S/ 10- Mintz D/ 12- Brooks Jr. K/ 31- Grady K/ 34- Tshiebwe O/ | 07:34 | 13-14 | -1 | 1.7181 | 3 | 1 | 2 | 2 | 1.1525 |
| 0- Toppin J/ 2- Wheeler S/ 3- Washington Jr. T/ 31- Grady K/ 34- Tshiebwe O/ | 07:20 | 13-13 | 0 | 1.7727 | 9 | 1 | 3 | 2 | 1.0285 |
| 0- Toppin J/ 2- Wheeler S/ 10- Mintz D/ 31- Grady K/ 34- Tshiebwe O/ | 03:44 | 4-7 | -3 | 1.0714 | 3 | 0 | 1 | 1 | 0.6329 |
| 0- Toppin J/ 2- Wheeler S/ 3- Washington Jr. T/ 10- Mintz D/ 34- Tshiebwe O/ | 03:09 | 8-14 | -6 | 2.5397 | 1 | 0 | 1 | 2 | 1.6393 |
| 3- Washington Jr. T/ 10- Mintz D/ 12- Brooks Jr. K/ 31- Grady K/ 34- Tshiebwe O/ | 03:06 | 9-2 | 7 | 2.9032 | 4 | 0 | 1 | 2 | 1.4241 |
| 2- Wheeler S/ 3- Washington Jr. T/ 10- Mintz D/ 12- Brooks Jr. K/ 34- Tshiebwe O/ | 02:12 | 6-7 | -1 | 2.7273 | 2 | 0 | 0 | 1 | 2.4590 |
| 0- Toppin J/ 3- Washington Jr. T/ 10- Mintz D/ 31- Grady K/ 34- Tshiebwe O/ | 01:48 | 5-2 | 3 | 2.7778 | 1 | 0 | 0 | 2 | 2.0492 |
| 2- Wheeler S/ 10- Mintz D/ 12- Brooks Jr. K/ 31- Grady K/ 55- Ware L/ | 01:37 | 3-4 | -1 | 1.8557 | 1 | 0 | 0 | 1 | 1.5000 |
| 0- Toppin J/ 2- Wheeler S/ 10- Mintz D/ 31- Grady K/ 55- Ware L/ | 00:26 | 0-0 | 0 | 0.0000 | 1 | 0 | 0 | 0 | 0.0000 |
| 3- Washington Jr. T/ 10- Mintz D/ 12- Brooks Jr. K/ 31- Grady K/ 55- Ware L/ | 00:21 | 0-1 | -1 | 0.0000 | 0 | 0 | 0 | 0 | 0.0000 |