



**Bellarmine at Kentucky**

11/29/22 Rupp Arena, Lexington  
2022-23 Men's Basketball

Game Time: 7:00 PM  
Game Duration: 1:52  
Attendance: 19,092

Officials: Pat Adams, Byron Jarrett, Shaun Seales

**Bellarmine - 41**

**Record: 2-6**

NO.	Name	F	Min	FG			3P			FT			Rebounds			Fouls		TP	AS	TO	ST	Blocks		+/-
				M-A	M-A	M-A	OR	DR	TOT	PF	FD	BS	BA											
42	Curt Hopf	F	23:09	5-13	5-10	0-0	0	0	0	4	0	15	0	0	0	1	0	0	1	0	2	2		
1	Juston Betz	G	33:27	4-6	1-2	0-0	0	2	2	2	1	9	2	1	1	0	0	0	0	0	-9			
5	Peter Suder	G	17:36	0-2	0-0	0-0	0	2	2	0	0	0	0	0	2	1	0	1	0	1	-8			
10	Garrett Tipton	G	26:02	0-6	0-5	2-2	1	2	3	2	1	2	4	2	2	0	0	0	0	-9				
22	Bash Wieland	G	29:11	4-8	1-4	1-2	1	7	8	1	2	10	2	1	0	0	0	0	-14					
2	Alec Pfriem		28:03	1-3	1-3	2-2	0	3	3	1	4	5	1	1	1	1	0	0	-14					
12	Langdon Hatton		07:59	0-0	0-0	0-0	0	1	1	3	0	0	0	0	0	0	0	0	0					
33	Ben Johnson		19:08	0-2	0-1	0-0	0	1	1	0	1	0	0	1	1	0	0	0	-13					
14	Sam DeVault		07:06	0-3	0-2	0-0	0	0	0	0	0	0	0	0	0	0	0	1	-13					
0	Jaylen Fairman		08:19	0-3	0-1	0-0	0	0	0	0	0	0	0	1	0	0	0	0	-17					
Team							1	0	1			0			3									
<b>Totals</b>				14-46	8-28	5-6	3	18	21	13	9	41	9	12	7	0	4	-19						

Shooting By Period		
1st FG%	7-24	29.2%
3PT%	3-14	21.4%
FT%	4-4	100%
2nd FG%	7-22	31.8%
3PT%	5-14	35.7%
FT%	1-2	50%
GM FG%	14-46	30.4%
3PT%	8-28	28.6%
FT%	5-6	83.3%

Dead Ball Rebounds: 1, 0

Technical Fouls: NONE

**Kentucky - 60**

**Record: 5-2**

NO.	Name	F	Min	FG			3P			FT			Rebounds			Fouls		TP	AS	TO	ST	Blocks		+/-
				M-A	M-A	M-A	OR	DR	TOT	PF	FD	BS	BA											
0	Jacob Toppin	F	30:39	4-9	0-2	4-4	2	3	5	0	2	12	2	0	0	0	0	0	0	0	12			
34	Oscar Tshiebwe	F	32:18	4-9	0-0	0-0	4	8	12	2	2	8	1	1	2	3	0	21						
2	Sahvir Wheeler	G	35:07	2-6	1-4	1-2	0	4	4	0	2	6	6	4	1	0	0	9						
12	Antonio Reeves	G	23:54	7-15	3-6	1-1	2	3	5	2	2	18	2	0	0	1	0	14						
22	Cason Wallace	G	30:17	1-5	0-3	1-2	1	3	4	2	1	3	3	1	2	0	0	13						
1	CJ Fredrick		18:41	3-7	3-7	2-2	0	0	0	0	3	11	0	0	0	0	0	13						
4	Daimion Collins		09:31	0-1	0-0	0-0	2	1	3	2	0	0	0	3	0	0	0	7						
24	Chris Livingston		12:01	0-0	0-0	0-0	1	4	5	1	0	0	1	1	1	0	0	8						
55	Lance Ware		07:32	1-1	0-0	0-0	0	1	1	0	1	2	1	2	0	0	-2							
Team							1	2	3			0			2									
<b>Totals</b>				22-53	7-22	9-11	13	29	42	9	13	60	16	14	6	4	0	19						

Shooting By Period		
1st FG%	9-30	30.0%
3PT%	2-11	18.2%
FT%	1-2	50%
2nd FG%	13-23	56.5%
3PT%	5-11	45.5%
FT%	8-9	88.9%
GM FG%	22-53	41.5%
3PT%	7-22	31.8%
FT%	9-11	81.8%

Dead Ball Rebounds: 2, 0

Technical Fouls: NONE

	BEL	UKY
Biggest lead	6 (1 <sup>st</sup> 15:56)	20 (2 <sup>nd</sup> 1:48)
Best Scoring Run	7 (1 <sup>st</sup> 1:23)	12 (2 <sup>nd</sup> 6:07)
Lead Changes	7	
Times Tied	7	
Time with Lead	12:52	16:35

Points from	BEL	UKY
Turnovers	2	11
Paint	8	28
Second Chance	2	13
Fast Breaks	0	13
Bench	5	13

	Period by Period Scoring		
	1st	2nd	TOT
BEL	21	20	41
UKY	21	39	60



**Bellarmine at Kentucky**

11/29/22 Rupp Arena, Lexington  
2022-23 Men's Basketball

Game Time: 7:00 PM

Game Duration: 1:52

Attendance: 19,092

Officials: Pat Adams, Byron Jarrett, Shaun Seales

**Period 1**

**Quarter Starters:**

<b>UKY</b>	0 Toppin J	2 Wheeler S	12 Reeves A	22 Wallace C	34 Tshiebwe O
<b>BEL</b>	1 Betz J	5 Suder P	10 Tipton G	22 Wieland B	42 Hopf C

Game Time	UKY	Score	Diff	BEL
20:00	34 TSHIEBWE O jumpball won			42 HOPF C jumpball lost
19:37	12 REEVES A 3pt FG , jump shot missed			
19:33	34 TSHIEBWE O offensive rebound (1)			
19:27	2 WHEELER S turnover travel (1)			
19:08				10 TIPTON G 3pt FG from turnover, jump shot missed
19:03	12 REEVES A defensive rebound (1)			
18:47	2 WHEELER S turnover bad pass (2)			42 HOPF C steal (1)
18:23				42 HOPF C 2pt FG from turnover in the paint, layup missed
18:20	34 TSHIEBWE O defensive rebound (2)			
18:05	2 WHEELER S 2pt FG in the paint, layup missed			
18:01				5 SUDER P defensive rebound (1)
17:55		<b>0-3</b>	<b>-3</b>	42 HOPF C 3pt FG , jump shot made (3)
17:55				1 BETZ J assist (1)
17:38	22 WALLACE C turnover bad pass (1)			5 SUDER P steal (1)
17:32	22 WALLACE C steal (1)			5 SUDER P turnover bad pass (1)
17:18	12 REEVES A foul drawn (1)			42 HOPF C foul personal (1 - 1)
17:02	12 REEVES A 2pt FG from turnover outside the paint, jump shot missed			
17:00				22 WIELAND B defensive rebound (1)
16:48				42 HOPF C 3pt FG , jump shot missed
16:44	0 TOPPIN J defensive rebound (1)			
16:37	34 TSHIEBWE O foul drawn (1)			1 BETZ J foul personal (1 - 2)
16:37				5 SUDER P substitution out
16:37				2 PFRIEM A substitution in
16:20	12 REEVES A 3pt FG , jump shot missed			
16:16				2 PFRIEM A defensive rebound (1)
15:56		<b>0-6</b>	<b>-6</b>	42 HOPF C 3pt FG , jump shot made (6)
15:56				22 WIELAND B assist (1)
15:49	12 REEVES A 2pt FG in the paint, layup missed			
15:45	34 TSHIEBWE O offensive rebound (3)			
15:44	34 TSHIEBWE O 2pt FG second chance in the paint, layup missed			
15:38	12 REEVES A offensive rebound (2)			
15:38	12 REEVES A 2pt FG second chance in the paint, layup made (2)	<b>2-6</b>	<b>-4</b>	
15:16				22 WIELAND B 3pt FG , jump shot missed
15:13	22 WALLACE C defensive rebound (1)			
15:05	34 TSHIEBWE O 2pt FG in the paint, layup made (2)	<b>4-6</b>	<b>-2</b>	
15:05	22 WALLACE C assist (1)			
14:48	12 REEVES A foul shooting (1 - 1)			10 TIPTON G foul drawn (1)
14:48	Timeout media			
14:48	0 TOPPIN J substitution out			
14:48	12 REEVES A substitution out			
14:48	22 WALLACE C substitution out			



**Bellarmine at Kentucky**

11/29/22 Rupp Arena, Lexington  
2022-23 Men's Basketball

**Game Time:** 7:00 PM  
**Game Duration:** 1:52  
**Attendance:** 19,092

**Officials:** Pat Adams, Byron Jarrett, Shaun Seales

Game Time	UKY	Score	Diff	BEL
14:48	34 TSHIEBWE O substitution out			
14:48	1 FREDRICK C substitution in			
14:48	4 COLLINS D substitution in			
14:48	24 LIVINGSTON C substitution in			
14:48	55 WARE L substitution in			
14:48				22 WIELAND B substitution out
14:48				42 HOPF C substitution out
14:48				5 SUDER P substitution in
14:48				12 HATTON L substitution in
14:48		<b>4-7</b>	<b>-3</b>	10 TIPTON G free throw 1 - 2 made (1)
14:48		<b>4-8</b>	<b>-4</b>	10 TIPTON G free throw 2 - 2 made (2)
14:48				10 TIPTON G substitution out
14:48				33 JOHNSON B substitution in
14:40	55 WARE L turnover offensive goal tending (1)			
14:07				1 BETZ J 2pt FG from turnover in the paint, jump shot missed
14:05	2 WHEELER S defensive rebound (1)			
13:40	4 COLLINS D turnover out of bounds (1)			
13:32	4 COLLINS D foul personal (1 - 2)			2 PFRIEM A foul drawn (1)
13:10				turnover shot clock (2)
13:10	4 COLLINS D substitution out			
13:10	0 TOPPIN J substitution in			
13:10				1 BETZ J substitution out
13:10				10 TIPTON G substitution in
12:56	55 WARE L turnover lost ball (2)			10 TIPTON G steal (1)
12:28				10 TIPTON G 3pt FG from turnover, jump shot missed
12:25	55 WARE L defensive rebound (1)			
12:18	1 FREDRICK C 3pt FG , jump shot missed			
12:15	offensive rebound (10)			
12:15	55 WARE L foul drawn (1)			12 HATTON L foul personal (1 - 3)
12:15				2 PFRIEM A substitution out
12:15				12 HATTON L substitution out
12:15				22 WIELAND B substitution in
12:15				42 HOPF C substitution in
12:05	55 WARE L 2pt FG second chance in the paint, dunk, made (2)	<b>6-8</b>	<b>-2</b>	
12:05	2 WHEELER S assist (1)			
11:40				22 WIELAND B 3pt FG , jump shot missed
11:37				10 TIPTON G offensive rebound (1)
11:35				33 JOHNSON B 3pt FG second chance, jump shot missed
11:32				22 WIELAND B offensive rebound (2)
11:31		<b>6-10</b>	<b>-4</b>	22 WIELAND B 2pt FG second chance in the paint, layup made (2)
11:19	2 WHEELER S turnover bad pass (3)			
11:10				42 HOPF C 3pt FG from turnover, jump shot missed
11:06	24 LIVINGSTON C defensive rebound (1)			
10:44	1 FREDRICK C foul drawn (1)			42 HOPF C foul personal (2 - 4)
10:44				Timeout media
10:44	0 TOPPIN J substitution out			
10:44	2 WHEELER S substitution out			
10:44	24 LIVINGSTON C substitution out			



**Bellarmine at Kentucky**

11/29/22 Rupp Arena, Lexington  
2022-23 Men's Basketball

**Game Time:** 7:00 PM  
**Game Duration:** 1:52  
**Attendance:** 19,092

**Officials:** Pat Adams, Byron Jarrett, Shaun Seales

Game Time	UKY	Score	Diff	BEL
10:44	55 WARE L substitution out			
10:44	4 COLLINS D substitution in			
10:44	12 REEVES A substitution in			
10:44	22 WALLACE C substitution in			
10:44	34 TSHIEBWE O substitution in			
10:44				33 JOHNSON B substitution out
10:44				42 HOPF C substitution out
10:44				1 BETZ J substitution in
10:44				14 DEVAULT S substitution in
10:39	12 REEVES A 2pt FG outside the paint, jump shot missed			
10:36	34 TSHIEBWE O offensive rebound (4)			
10:34	34 TSHIEBWE O 2pt FG second chance in the paint, layup missed			
10:31	22 WALLACE C offensive rebound (2)			
10:30	22 WALLACE C 2pt FG second chance in the paint, dunk, made (2)	<b>8-10</b>	<b>-2</b>	
10:08				14 DEVAULT S 2pt FG in the paint, jump shot blocked
10:08	34 TSHIEBWE O block (1)			
10:02	34 TSHIEBWE O defensive rebound (5)			
09:55	34 TSHIEBWE O 2pt FG in the paint, layup made (4)	<b>10-10</b>	<b>0</b>	
09:55	12 REEVES A assist (1)			
09:28				10 TIPTON G 3pt FG , jump shot missed
09:25	12 REEVES A defensive rebound (3)			
09:17	4 COLLINS D 2pt FG outside the paint, jump shot missed			
09:12				10 TIPTON G defensive rebound (2)
08:54		<b>10-12</b>	<b>-2</b>	22 WIELAND B 2pt FG in the paint, jump shot made (4)
08:30	22 WALLACE C 3pt FG , jump shot missed			
08:25	4 COLLINS D offensive rebound (1)			
08:22	12 REEVES A 2pt FG second chance in the paint, layup missed			
08:20	12 REEVES A offensive rebound (4)			
08:20	12 REEVES A 2pt FG second chance in the paint, layup made (4)	<b>12-12</b>	<b>0</b>	
08:19	4 COLLINS D substitution out			
08:19	0 TOPPIN J substitution in			
08:19				5 SUDER P substitution out
08:19				14 DEVAULT S substitution out
08:19				2 PFRIEM A substitution in
08:19				12 HATTON L substitution in
08:01	22 WALLACE C foul personal (1 - 3)			22 WIELAND B foul drawn (1)
07:53	12 REEVES A foul personal (2 - 4)			2 PFRIEM A foul drawn (2)
07:53	Timeout media			
07:53				10 TIPTON G substitution out
07:53				33 JOHNSON B substitution in
07:53	12 REEVES A substitution out			
07:53	2 WHEELER S substitution in			
07:32				turnover shot clock (3)
07:08	2 WHEELER S 3pt FG from turnover, jump shot missed			
07:08				22 WIELAND B defensive rebound (3)
06:58	1 FREDRICK C foul drawn (2)			2 PFRIEM A foul personal (1 - 5)
06:58	1 FREDRICK C substitution out			



**Bellarmine at Kentucky**

11/29/22 Rupp Arena, Lexington  
2022-23 Men's Basketball

**Game Time:** 7:00 PM  
**Game Duration:** 1:52  
**Attendance:** 19,092

**Officials:** Pat Adams, Byron Jarrett, Shaun Seales

Game Time	UKY	Score	Diff	BEL
06:58	24 LIVINGSTON C substitution in			
06:37	0 TOPPIN J 2pt FG in the paint, layup missed			
06:32	0 TOPPIN J offensive rebound (2)			
06:31	0 TOPPIN J 2pt FG second chance in the paint, layup missed			
06:28				2 PFRIEM A defensive rebound (2)
06:05				22 WIELAND B 2pt FG in the paint, jump shot missed
06:03	34 TSHIEBWE O defensive rebound (6)			
05:59	0 TOPPIN J 3pt FG , jump shot missed			
05:55				22 WIELAND B defensive rebound (4)
05:33	24 LIVINGSTON C steal (1)			33 JOHNSON B turnover bad pass (1)
05:27	22 WALLACE C foul drawn (1)			12 HATTON L foul shooting (2 - 6)
05:27	22 WALLACE C free throw fast break 1 - 2 missed			
05:27	offensive dead ball rebound (1)			
05:27				1 BETZ J substitution out
05:27				12 HATTON L substitution out
05:27				22 WIELAND B substitution out
05:27				0 FAIRMAN J substitution in
05:27				10 TIPTON G substitution in
05:27				42 HOPF C substitution in
05:27	22 WALLACE C free throw fast break 2 - 2 made (3)	<b>13-12</b>	<b>1</b>	
05:13	34 TSHIEBWE O foul shooting (1 - 5)			2 PFRIEM A foul drawn (3)
05:13		<b>13-13</b>	<b>0</b>	2 PFRIEM A free throw 1 - 2 made (1)
05:13	22 WALLACE C substitution out			
05:13	1 FREDRICK C substitution in			
05:13		<b>13-14</b>	<b>-1</b>	2 PFRIEM A free throw 2 - 2 made (2)
05:13				42 HOPF C substitution out
05:13				5 SUDER P substitution in
04:55	0 TOPPIN J 2pt FG in the paint, jump shot missed			
04:52	24 LIVINGSTON C offensive rebound (2)			
04:47	2 WHEELER S 3pt FG second chance, jump shot made (3)	<b>16-14</b>	<b>2</b>	
04:47	34 TSHIEBWE O assist (1)			
04:19				10 TIPTON G 3pt FG , jump shot missed
04:15	2 WHEELER S defensive rebound (2)			
03:56	34 TSHIEBWE O 2pt FG in the paint, layup made (6)	<b>18-14</b>	<b>4</b>	
03:56	24 LIVINGSTON C assist (1)			
03:41				0 FAIRMAN J 3pt FG , jump shot missed
03:37	24 LIVINGSTON C defensive rebound (3)			
03:31	1 FREDRICK C 3pt FG , jump shot made (3)	<b>21-14</b>	<b>7</b>	
03:31	2 WHEELER S assist (2)			
03:27				Timeout 30 Sec
03:27				0 FAIRMAN J substitution out
03:27				5 SUDER P substitution out
03:27				1 BETZ J substitution in
03:27				42 HOPF C substitution in
03:19				42 HOPF C 2pt FG in the paint, layup blocked
03:19	34 TSHIEBWE O block (2)			
03:14	24 LIVINGSTON C defensive rebound (4)			
03:08	1 FREDRICK C 3pt FG , jump shot missed			
03:05				10 TIPTON G defensive rebound (3)



**Bellarmine at Kentucky**

11/29/22 Rupp Arena, Lexington  
2022-23 Men's Basketball

**Game Time:** 7:00 PM  
**Game Duration:** 1:52  
**Attendance:** 19,092

**Officials:** Pat Adams, Byron Jarrett, Shaun Seales

Game Time	UKY	Score	Diff	BEL
02:52		<b>21-16</b>	<b>5</b>	1 BETZ J 2pt FG in the paint, layup made (2)
02:52				10 TIPTON G assist (1)
02:14	turnover shot clock (8)			
02:14	24 LIVINGSTON C substitution out			
02:14	22 WALLACE C substitution in			
02:14				Timeout 30 Sec
01:49		<b>21-18</b>	<b>3</b>	1 BETZ J 2pt FG from turnover outside the paint, jump shot made (4)
01:34	2 WHEELER S 3pt FG , jump shot missed			
01:31				33 JOHNSON B defensive rebound (1)
01:23		<b>21-21</b>	<b>0</b>	42 HOPF C 3pt FG , jump shot made (9)
01:23				10 TIPTON G assist (2)
01:18	Timeout 30 Sec			
01:18				1 BETZ J substitution out
01:18				42 HOPF C substitution out
01:18				0 FAIRMAN J substitution in
01:18				12 HATTON L substitution in
01:07	34 TSHIEBWE O turnover bad pass (1)			10 TIPTON G steal (2)
00:46				0 FAIRMAN J 2pt FG from turnover in the paint, jump shot missed
00:43	0 TOPPIN J defensive rebound (3)			
00:39	1 FREDRICK C 3pt FG , jump shot missed			
00:35				12 HATTON L defensive rebound (1)
00:14				10 TIPTON G 3pt FG , jump shot missed
00:10	defensive rebound (25)			
00:10				0 FAIRMAN J substitution out
00:10				33 JOHNSON B substitution out
00:10				1 BETZ J substitution in
00:10				22 WIELAND B substitution in
00:04	34 TSHIEBWE O 2pt FG outside the paint, jump shot missed			
00:01				22 WIELAND B defensive rebound (5)
<b>END OF PERIOD</b>				
<b>UKY 21-21 BEL</b>				



**Bellarmine at Kentucky**

11/29/22 Rupp Arena, Lexington  
2022-23 Men's Basketball

Game Time: 7:00 PM  
Game Duration: 1:52  
Attendance: 19,092

Officials: Pat Adams, Byron Jarrett, Shaun Seales

**Bellarmine - 21**

NO.	Name	F/G	Min	FG	3P	FT	Rebounds			Fouls		TP	AS	TO	ST	Blocks		+/-	
				M-A	M-A	M-A	OR	DR	TOT	PF	FD					BS	BA		
42	Curt Hopf	F	09:06	3-7	3-5	0-0	0	0	0	2	0	9	0	0	1	0	1	10	
1	Juston Betz	G	14:27	2-3	0-0	0-0	0	0	0	1	0	4	1	0	0	0	0	7	
5	Peter Suder	G	11:38	0-0	0-0	0-0	0	1	1	0	0	0	0	1	1	0	0	-7	
10	Garrett Tipton	G	15:56	0-5	0-5	2-2	1	2	3	0	1	2	2	0	2	0	0	0	
22	Bash Wieland	G	12:11	2-5	0-2	0-0	1	4	5	0	1	4	1	0	0	0	0	-2	
2	Alec Pfriem		12:41	0-0	0-0	2-2	0	2	2	1	3	2	0	0	0	0	0	1	
12	Langdon Hatton		06:43	0-0	0-0	0-0	0	1	1	2	0	0	0	0	0	0	0	2	
33	Ben Johnson		11:46	0-1	0-1	0-0	0	1	1	0	0	0	0	1	0	0	0	0	
14	Sam DeVault		02:25	0-1	0-0	0-0	0	0	0	0	0	0	0	0	0	0	1	-4	
0	Jaylen Fairman		03:07	0-2	0-1	0-0	0	0	0	0	0	0	0	0	0	0	0	-7	
Team							0	0	0			0		2					
<b>Totals</b>				7-24	3-14	4-4	2	11	13	6	5	21	4	4	4	4	0	2	0

Shooting By Period		
1st FG%	7-24	29.2%
3PT%	3-14	21.4%
FT%	4-4	100%
GM FG%	7-24	29.2%
3PT%	3-14	21.4%
FT%	4-4	100.0%

Dead Ball Rebounds: 0, 0

Technical Fouls::NONE

**Kentucky - 21**

NO.	Name	F/G	Min	FG	3P	FT	Rebounds			Fouls		TP	AS	TO	ST	Blocks		+/-
				M-A	M-A	M-A	OR	DR	TOT	PF	FD					BS	BA	
0	Jacob Toppin	F	15:57	0-4	0-1	0-0	1	2	3	0	0	0	0	0	0	0	0	-2
34	Oscar Tshiebwe	F	15:56	3-6	0-0	0-0	3	3	6	1	1	6	1	1	0	2	0	2
2	Sahvir Wheeler	G	17:09	1-4	1-3	0-0	0	2	2	0	0	3	2	3	0	0	0	-4
12	Antonio Reeves	G	08:03	2-8	0-2	0-0	2	2	4	2	1	4	1	0	0	0	0	2
22	Cason Wallace	G	12:57	1-2	0-1	1-2	1	1	2	1	1	3	1	1	1	0	0	-3
1	CJ Fredrick		13:03	1-4	1-4	0-0	0	0	0	0	2	3	0	0	0	0	0	2
4	Daimion Collins		04:03	0-1	0-0	0-0	1	0	1	1	0	0	0	1	0	0	0	2
24	Chris Livingston		08:48	0-0	0-0	0-0	1	3	4	0	0	0	1	0	1	0	0	3
55	Lance Ware		04:04	1-1	0-0	0-0	0	1	1	0	1	2	0	2	0	0	0	-2
Team							1	1	2			0		1				
<b>Totals</b>				9-30	2-11	1-2	10	15	25	5	6	21	6	9	2	2	0	0

Shooting By Period		
1st FG%	9-30	30.0%
3PT%	2-11	18.2%
FT%	1-2	50%
GM FG%	9-30	30.0%
3PT%	2-11	18.2%
FT%	1-2	50.0%

Dead Ball Rebounds: 1, 0

Technical Fouls::NONE

	BEL	UKY
Biggest lead	6 (1st 15:56)	7 (1st 3:31)
Best Scoring Run	7(1st 1:23)	8(1st 3:31)
Lead Changes	3	
Times Tied	4	
Time with Lead	09:00	03:38

Points from	BEL	UKY
Turnovers	2	1
Paint	6	14
Second Chance	2	11
Fast Breaks	0	1
Bench	2	5

	Period by Period Scoring		
	1st	2nd	TOT
BEL	21	20	41
UKY	21	39	60



**Bellarmine at Kentucky**

11/29/22 Rupp Arena, Lexington  
2022-23 Men's Basketball

**Game Time:** 7:00 PM  
**Game Duration:** 1:52  
**Attendance:** 19,092

**Officials:** Pat Adams, Byron Jarrett, Shaun Seales

**Period 2**

**Quarter Starters:**

<b>UKY</b>	0 Toppin J	2 Wheeler S	12 Reeves A	22 Wallace C	34 Tshiebwe O
<b>BEL</b>	1 Betz J	5 Suder P	10 Tipton G	22 Wieland B	42 Hopf C

Game Time	UKY	Score	Diff	BEL
20:00	1 FREDRICK C substitution out			
20:00	12 REEVES A substitution in			
20:00				2 PFRIEM A substitution out
20:00				12 HATTON L substitution out
20:00				5 SUDER P substitution in
20:00				42 HOPF C substitution in
19:40	34 TSHIEBWE O steal (1)			10 TIPTON G turnover bad pass (1)
19:37	34 TSHIEBWE O foul drawn (2)			42 HOPF C foul personal (3 - 1)
19:27	12 REEVES A 2pt FG from turnover in the paint, layup made (6)	<b>23-21</b>	<b>2</b>	
19:27	0 TOPPIN J assist (1)			
19:27	12 REEVES A foul drawn (2)			10 TIPTON G foul shooting (1 - 2)
19:27	12 REEVES A free throw 1 - 1 made (7)	<b>24-21</b>	<b>3</b>	
19:08		<b>24-24</b>	<b>0</b>	42 HOPF C 3pt FG , jump shot made (12)
19:08				10 TIPTON G assist (3)
18:43	0 TOPPIN J foul drawn (1)			22 WIELAND B foul personal (1 - 3)
18:43				5 SUDER P substitution out
18:43				2 PFRIEM A substitution in
18:37	34 TSHIEBWE O 2pt FG in the paint, layup missed			
18:35				22 WIELAND B defensive rebound (6)
18:17		<b>24-26</b>	<b>-2</b>	1 BETZ J 2pt FG outside the paint, jump shot made (6)
18:00	34 TSHIEBWE O 2pt FG in the paint, layup made (8)	<b>26-26</b>	<b>0</b>	
18:00	12 REEVES A assist (2)			
17:39				10 TIPTON G 2pt FG outside the paint, jump shot missed
17:35	34 TSHIEBWE O defensive rebound (7)			
17:29	0 TOPPIN J 2pt FG fast break in the paint, layup made (2)	<b>28-26</b>	<b>2</b>	
17:29	2 WHEELER S assist (3)			
17:06		<b>28-29</b>	<b>-1</b>	22 WIELAND B 3pt FG , jump shot made (7)
17:06				2 PFRIEM A assist (1)
16:38	12 REEVES A 2pt FG outside the paint, jump shot missed			
16:33				2 PFRIEM A defensive rebound (3)
16:33				Timeout 30 Sec
16:33	0 TOPPIN J substitution out			
16:33	34 TSHIEBWE O substitution out			
16:33	4 COLLINS D substitution in			
16:33	55 WARE L substitution in			
16:33				10 TIPTON G substitution out
16:33				5 SUDER P substitution in
16:08		<b>28-32</b>	<b>-4</b>	42 HOPF C 3pt FG , jump shot made (15)
16:08				22 WIELAND B assist (2)
15:29	turnover shot clock (10)			
15:29	Timeout media			
15:13				2 PFRIEM A turnover bad pass (1)
15:13	55 WARE L substitution out			





**Bellarmine at Kentucky**

11/29/22 Rupp Arena, Lexington  
2022-23 Men's Basketball

**Game Time:** 7:00 PM  
**Game Duration:** 1:52  
**Attendance:** 19,092

**Officials:** Pat Adams, Byron Jarrett, Shaun Seales

Game Time	UKY	Score	Diff	BEL
15:13	34 TSHIEBWE O substitution in			
15:13				5 SUDER P substitution out
15:13				33 JOHNSON B substitution in
15:01	22 WALLACE C 3pt FG from turnover, jump shot missed			
14:57	34 TSHIEBWE O offensive rebound (8)			
14:48	2 WHEELER S 3pt FG from turnover second chance, jump shot missed			
14:44	4 COLLINS D offensive rebound (2)			
14:43	4 COLLINS D turnover lost ball (2)			33 JOHNSON B steal (1)
14:19				42 HOPF C 2pt FG from turnover in the paint, layup blocked
14:19	34 TSHIEBWE O block (3)			
14:14	34 TSHIEBWE O defensive rebound (9)			
14:12	12 REEVES A 3pt FG fast break, jump shot made (10)	<b>31-32</b>	<b>-1</b>	
14:12	2 WHEELER S assist (4)			
13:40				33 JOHNSON B 2pt FG outside the paint, jump shot missed
13:38	34 TSHIEBWE O defensive rebound (10)			
13:31	2 WHEELER S foul drawn (1)			1 BETZ J foul shooting (2 - 4)
13:31	2 WHEELER S free throw 1 - 2 missed			
13:31	offensive dead ball rebound (2)			
13:31	4 COLLINS D substitution out			
13:31	0 TOPPIN J substitution in			
13:31				22 WIELAND B substitution out
13:31				42 HOPF C substitution out
13:31				10 TIPTON G substitution in
13:31				12 HATTON L substitution in
13:31	2 WHEELER S free throw 2 - 2 made (4)	<b>32-32</b>	<b>0</b>	
13:07				2 PFRIEM A 3pt FG , jump shot missed
13:03	2 WHEELER S defensive rebound (3)			
12:56	2 WHEELER S turnover lost ball (4)			1 BETZ J steal (1)
12:56				2 PFRIEM A substitution out
12:56				5 SUDER P substitution in
12:41				1 BETZ J turnover bad pass (1)
12:41	2 WHEELER S substitution out			
12:41	1 FREDRICK C substitution in			
12:32	22 WALLACE C 3pt FG from turnover, jump shot missed			
12:28				5 SUDER P defensive rebound (2)
12:20				5 SUDER P 2pt FG outside the paint, jump shot blocked
12:20	12 REEVES A block (1)			
12:16	12 REEVES A defensive rebound (5)			
12:15	1 FREDRICK C foul drawn (3)			12 HATTON L foul shooting (3 - 5)
12:15	1 FREDRICK C free throw fast break 1 - 2 made (4)	<b>33-32</b>	<b>1</b>	
12:15				1 BETZ J substitution out
12:15				5 SUDER P substitution out
12:15				12 HATTON L substitution out
12:15				33 JOHNSON B substitution out
12:15				0 FAIRMAN J substitution in
12:15				2 PFRIEM A substitution in
12:15				22 WIELAND B substitution in
12:15				42 HOPF C substitution in



**Bellarmine at Kentucky**

11/29/22 Rupp Arena, Lexington  
2022-23 Men's Basketball

**Game Time:** 7:00 PM  
**Game Duration:** 1:52  
**Attendance:** 19,092

**Officials:** Pat Adams, Byron Jarrett, Shaun Seales

Game Time	UKY	Score	Diff	BEL
12:15	1 FREDRICK C free throw fast break 2 - 2 made (5)	<b>34-32</b>	<b>2</b>	
11:50	34 TSHIEBWE O steal (2)			10 TIPTON G turnover lost ball (2)
11:44	0 TOPPIN J foul drawn (2)			42 HOPF C foul shooting (4 - 6)
11:44	Timeout media			
11:44				42 HOPF C substitution out
11:44				14 DEVAULT S substitution in
11:44	0 TOPPIN J free throw fast break 1 - 2 made (3)	<b>35-32</b>	<b>3</b>	
11:44	0 TOPPIN J free throw fast break 2 - 2 made (4)	<b>36-32</b>	<b>4</b>	
11:15				10 TIPTON G substitution out
11:15				1 BETZ J substitution in
11:12				turnover shot clock (9)
11:12	12 REEVES A substitution out			
11:12	2 WHEELER S substitution in			
10:44	1 FREDRICK C 3pt FG from turnover, jump shot made (8)	<b>39-32</b>	<b>7</b>	
10:44	2 WHEELER S assist (5)			
10:14		<b>39-35</b>	<b>4</b>	2 PFRIEM A 3pt FG , jump shot made (5)
10:14				1 BETZ J assist (2)
09:44	1 FREDRICK C 3pt FG , jump shot made (11)	<b>42-35</b>	<b>7</b>	
09:44	0 TOPPIN J assist (2)			
09:24	2 WHEELER S steal (1)			0 FAIRMAN J turnover lost ball (1)
09:14	34 TSHIEBWE O 2pt FG from turnover in the paint, layup missed			
09:12				1 BETZ J defensive rebound (1)
09:04				0 FAIRMAN J 2pt FG in the paint, layup missed
09:02	34 TSHIEBWE O defensive rebound (11)			
08:45	0 TOPPIN J 2pt FG in the paint, layup made (6)	<b>44-35</b>	<b>9</b>	
08:45	22 WALLACE C assist (2)			
08:31				14 DEVAULT S 3pt FG , jump shot missed
08:28	34 TSHIEBWE O defensive rebound (12)			
08:06	0 TOPPIN J 2pt FG in the paint, layup made (8)	<b>46-35</b>	<b>11</b>	
07:37				14 DEVAULT S 3pt FG , jump shot missed
07:32	22 WALLACE C defensive rebound (3)			
07:16	1 FREDRICK C 3pt FG , jump shot missed			
07:13				22 WIELAND B defensive rebound (7)
07:03	22 WALLACE C foul personal (2 - 1)			2 PFRIEM A foul drawn (4)
07:03	Timeout media			
07:03	1 FREDRICK C substitution out			
07:03	22 WALLACE C substitution out			
07:03	34 TSHIEBWE O substitution out			
07:03	12 REEVES A substitution in			
07:03	24 LIVINGSTON C substitution in			
07:03	55 WARE L substitution in			
07:03				0 FAIRMAN J substitution out
07:03				2 PFRIEM A substitution out
07:03				14 DEVAULT S substitution out
07:03				5 SUDER P substitution in
07:03				33 JOHNSON B substitution in
07:03				42 HOPF C substitution in
06:47				5 SUDER P 2pt FG in the paint, jump shot missed
06:45	defensive rebound (36)			



**Bellarmine at Kentucky**

11/29/22 Rupp Arena, Lexington  
2022-23 Men's Basketball

**Game Time:** 7:00 PM  
**Game Duration:** 1:52  
**Attendance:** 19,092

**Officials:** Pat Adams, Byron Jarrett, Shaun Seales

Game Time	UKY	Score	Diff	BEL
06:26	0 TOPPIN J 2pt FG in the paint, dunk, made (10)	<b>48-35</b>	<b>13</b>	
06:26	55 WARE L assist (1)			
06:13				22 WIELAND B 3pt FG , jump shot missed
06:10	24 LIVINGSTON C defensive rebound (5)			
06:07	12 REEVES A 3pt FG fast break, jump shot made (13)	<b>51-35</b>	<b>16</b>	
06:07	2 WHEELER S assist (6)			
05:55				Timeout 60 Sec
05:35		<b>51-37</b>	<b>14</b>	22 WIELAND B 2pt FG in the paint, layup made (9)
05:08	0 TOPPIN J 3pt FG , jump shot missed			
05:04				1 BETZ J defensive rebound (2)
05:00				42 HOPF C 3pt FG , jump shot missed
04:55				offensive rebound (20)
04:55	0 TOPPIN J substitution out			
04:55	55 WARE L substitution out			
04:55	4 COLLINS D substitution in			
04:55	34 TSHIEBWE O substitution in			
04:47				5 SUDER P turnover bad pass (2)
04:23	24 LIVINGSTON C foul offensive (1 - 2)			33 JOHNSON B foul drawn (1)
04:23	24 LIVINGSTON C turnover offensive (1)			
04:23	24 LIVINGSTON C substitution out			
04:23	22 WALLACE C substitution in			
04:23				5 SUDER P substitution out
04:23				22 WIELAND B substitution out
04:23				2 PFRIEM A substitution in
04:23				10 TIPTON G substitution in
04:08				42 HOPF C 3pt FG , jump shot missed
04:04	22 WALLACE C defensive rebound (4)			
03:47	2 WHEELER S 2pt FG in the paint, jump shot made (6)	<b>53-37</b>	<b>16</b>	
03:30				42 HOPF C 3pt FG , jump shot missed
03:26	4 COLLINS D defensive rebound (3)			
03:25	4 COLLINS D turnover bad pass (3)			2 PFRIEM A steal (1)
03:21				1 BETZ J 3pt FG from turnover, jump shot missed
03:18	2 WHEELER S defensive rebound (4)			
03:04	12 REEVES A 3pt FG , jump shot made (16)	<b>56-37</b>	<b>19</b>	
02:39	Timeout media			
02:39	34 TSHIEBWE O substitution out			
02:39	0 TOPPIN J substitution in			
02:39				33 JOHNSON B substitution out
02:39				22 WIELAND B substitution in
02:29	4 COLLINS D foul personal (2 - 3)			1 BETZ J foul drawn (1)
02:29	4 COLLINS D substitution out			
02:29	34 TSHIEBWE O substitution in			
02:16	34 TSHIEBWE O foul shooting (2 - 4)			22 WIELAND B foul drawn (2)
02:16				22 WIELAND B free throw 1 - 2 missed
02:16				offensive dead ball rebound (1)
02:16		<b>56-38</b>	<b>18</b>	22 WIELAND B free throw 2 - 2 made (10)
01:48	12 REEVES A 2pt FG outside the paint, jump shot made (18)	<b>58-38</b>	<b>20</b>	
01:48	22 WALLACE C assist (3)			
01:29		<b>58-41</b>	<b>17</b>	1 BETZ J 3pt FG , jump shot made (9)



**Bellarmine at Kentucky**

11/29/22 Rupp Arena, Lexington  
2022-23 Men's Basketball

**Game Time:** 7:00 PM  
**Game Duration:** 1:52  
**Attendance:** 19,092

**Officials:** Pat Adams, Byron Jarrett, Shaun Seales

Game Time	UKY	Score	Diff	BEL
01:29				10 TIPTON G assist (4)
01:03	12 REEVES A 3pt FG , jump shot missed			
00:58				22 WIELAND B defensive rebound (8)
00:54	22 WALLACE C steal (2)			22 WIELAND B turnover bad pass (1)
00:50	22 WALLACE C 2pt FG from turnover in the paint, jump shot missed			
00:48	0 TOPPIN J offensive rebound (4)			
00:32	2 WHEELER S foul drawn (2)			10 TIPTON G foul shooting (2 - 7)
00:32	2 WHEELER S substitution out			
00:32	24 LIVINGSTON C substitution in			
00:32	0 TOPPIN J free throw 1 - 2 made (11)	<b>59-41</b>	<b>18</b>	
00:32	0 TOPPIN J free throw 2 - 2 made (12)	<b>60-41</b>	<b>19</b>	
00:23				2 PFRIEM A 3pt FG , jump shot missed
00:18	0 TOPPIN J defensive rebound (5)			
<b>END OF GAME</b>				
<b>UKY 60-41 BEL</b>				



**Bellarmine at Kentucky**

11/29/22 Rupp Arena, Lexington  
2022-23 Men's Basketball

Game Time: 7:00 PM  
Game Duration: 1:52  
Attendance: 19,092

Officials: Pat Adams, Byron Jarrett, Shaun Seales

**Bellarmine - 20**

NO.	Name	F/G	Min	FG	3P	FT	Rebounds			Fouls		TP	AS	TO	ST	Blocks		+/-
							M-A	M-A	M-A	OR	DR					TOT	PF	
42	Curt Hopf	F	14:03	2-6	2-5	0-0	0	0	0	2	0	6	0	0	0	0	1	-8
1	Juston Betz	G	19:00	2-3	1-2	0-0	0	2	2	1	1	5	1	1	1	0	0	-16
5	Peter Suder	G	05:58	0-2	0-0	0-0	0	1	1	0	0	0	0	1	0	0	1	-1
10	Garrett Tipton	G	10:06	0-1	0-0	0-0	0	0	0	2	0	0	2	2	0	0	0	-9
22	Bash Wieland	G	17:00	2-3	1-2	1-2	0	3	3	1	1	6	1	1	0	0	0	-12
2	Alec Pfriem		15:22	1-3	1-3	0-0	0	1	1	0	1	3	1	1	1	0	0	-15
33	Ben Johnson		07:22	0-1	0-0	0-0	0	0	0	0	1	0	0	0	1	0	0	-13
12	Langdon Hatton		01:16	0-0	0-0	0-0	0	0	0	1	0	0	0	0	0	0	0	-2
0	Jaylen Fairman		05:12	0-1	0-0	0-0	0	0	0	0	0	0	0	1	0	0	0	-10
14	Sam DeVault		04:41	0-2	0-2	0-0	0	0	0	0	0	0	0	0	0	0	0	-9
Team							1	0	1			0		1				
<b>Totals</b>				7-22	5-14	1-2	1	7	8	7	4	20	5	8	3	0	2	-19

Shooting By Period		
2 <sup>nd</sup> FG%	7-22	31.8%
3PT%	5-14	35.7%
FT%	1-2	50%
GM FG%	7-22	31.8%
3PT%	5-14	35.7%
FT%	1-2	50.0%

Dead Ball Rebounds: 1, 0

Technical Fouls::NONE

**Kentucky - 39**

NO.	Name	F/G	Min	FG	3P	FT	Rebounds			Fouls		TP	AS	TO	ST	Blocks		+/-
							M-A	M-A	M-A	OR	DR					TOT	PF	
0	Jacob Toppin	F	14:42	4-5	0-1	4-4	1	1	2	0	2	12	2	0	0	0	0	14
34	Oscar Tshiebwe	F	16:22	1-3	0-0	0-0	1	5	6	1	1	2	0	0	2	1	0	19
2	Sahvir Wheeler	G	17:58	1-2	0-1	1-2	0	2	2	0	2	3	4	1	1	0	0	13
12	Antonio Reeves	G	15:51	5-7	3-4	1-1	0	1	1	0	1	14	1	0	0	1	0	12
22	Cason Wallace	G	17:20	0-3	0-2	0-0	0	2	2	1	0	0	2	0	1	0	0	16
4	Daimion Collins		05:28	0-0	0-0	0-0	1	1	2	1	0	0	0	2	0	0	0	5
55	Lance Ware		03:28	0-0	0-0	0-0	0	0	0	0	0	0	1	0	0	0	0	0
1	CJ Fredrick		05:38	2-3	2-3	2-2	0	0	0	0	1	8	0	0	0	0	0	11
24	Chris Livingston		03:13	0-0	0-0	0-0	0	1	1	1	0	0	0	1	0	0	0	5
Team							0	1	1			0		1				
<b>Totals</b>				13-23	5-11	8-9	3	14	17	4	7	39	10	5	4	2	0	19

Shooting By Period		
2 <sup>nd</sup> FG%	13-23	56.5%
3PT%	5-11	45.5%
FT%	8-9	88.9%
GM FG%	13-23	56.5%
3PT%	5-11	45.5%
FT%	8-9	88.9%

Dead Ball Rebounds: 1, 0

Technical Fouls::NONE

	BEL	UKY
Biggest lead	4 (2 <sup>nd</sup> 16:08)	20 (2 <sup>nd</sup> 1:48)
Best Scoring Run	6(2 <sup>nd</sup> 16:08)	12(2 <sup>nd</sup> 6:07)
Lead Changes	5	
Times Tied	3	
Time with Lead	03:52	12:57

Points from	BEL	UKY
Turnovers	0	10
Paint	2	14
Second Chance	0	2
Fast Breaks	0	12
Bench	3	8

	Period by Period Scoring		
	1st	2nd	TOT
BEL	21	20	41
UKY	21	39	60



**Bellarmine at Kentucky**

11/29/22 Rupp Arena, Lexington  
2022-23 Men's Basketball

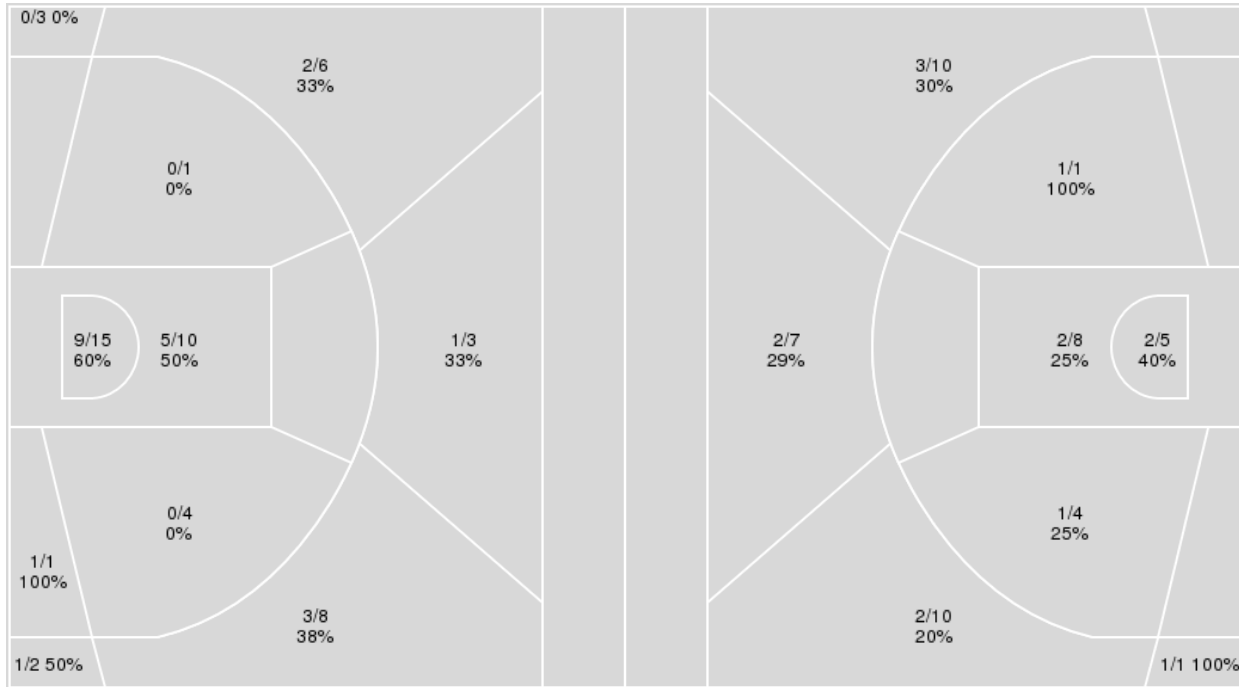
Officials: Pat Adams, Byron Jarrett, Shaun Seales

{ Players => All; } FG Types => All; Results => All;

{ Players => 0, 1, 2, 4, 5, 10, 11, 12, 14, 22, 23, 24, 30, 33, 34, 42, 55; }  
FG Types => All; Results => All;

**Kentucky**

**Bellarmine**



Kentucky	M/A	%
Field Goals	22/53	42
2 Points	15/31	48
3 Points	7/22	32
Free Throws	9/11	82

Bellarmine	M/A	%
Field Goals	14/46	30
2 Points	6/18	33
3 Points	8/28	29
Free Throws	5/6	83



**Bellarmine at Kentucky**

11/29/22 Rupp Arena, Lexington  
2022-23 Men's Basketball

Game Time: 7:00 PM  
Game Duration: 1:52  
Attendance: 19,092

Officials: Pat Adams, Byron Jarrett, Shaun Seales

**Bellarmine**

No	Name	Mins		Score		Points Diff		Points per Min		Assists		Rebounds		Steals		Turnovers	
		On	Off	On	Off	On	Off	On	Off	On	Off	On	Off	On	Off	On	Off
0	Jaylen Fairman	08:19	31:41	5 - 22	36 - 38	-17	-2	0.60	1.14	1	8	3	18	1	6	3	9
1	Juston Betz	33:27	06:33	37 - 46	4 - 14	-9	-10	1.11	0.61	9	0	18	3	5	2	11	1
2	Alec Pfriem	28:03	11:57	29 - 43	12 - 17	-14	-5	1.03	1.00	7	2	13	8	5	2	8	4
5	Peter Suder	17:36	22:24	17 - 25	24 - 35	-8	-11	0.97	1.07	3	6	8	13	3	4	6	6
10	Garrett Tipton	26:02	13:58	33 - 42	8 - 18	-9	-10	1.27	0.57	7	2	14	7	6	1	5	7
12	Langdon Hatton	07:59	32:01	2 - 2	39 - 58	0	-19	0.25	1.22	0	9	6	15	3	4	4	8
14	Sam DeVault	07:06	32:54	5 - 18	36 - 42	-13	-6	0.70	1.09	1	8	3	18	0	7	2	10
22	Bash Wieland	29:11	10:49	30 - 44	11 - 16	-14	-5	1.03	1.02	7	2	17	4	3	4	10	2
33	Ben Johnson	19:08	20:52	13 - 26	28 - 34	-13	-6	0.68	1.34	2	7	11	10	5	2	5	7
42	Curt Hopf	23:09	16:51	34 - 32	7 - 28	2	-21	1.47	0.42	8	1	12	9	4	3	6	6

**Kentucky**

No	Name	Mins		Score		Points Diff		Points per Min		Assists		Rebounds		Steals		Turnovers	
		On	Off	On	Off	On	Off	On	Off	On	Off	On	Off	On	Off	On	Off
0	Jacob Toppin	30:39	09:21	46 - 34	14 - 7	12	7	1.50	1.50	14	2	28	14	6	0	8	6
1	CJ Fredrick	18:41	21:19	30 - 17	30 - 24	13	6	1.61	1.41	8	8	20	22	2	4	6	8
2	Sahvir Wheeler	35:07	04:53	48 - 39	12 - 2	9	10	1.37	2.46	15	1	34	8	5	1	14	0
4	Daimion Collins	09:31	30:29	14 - 7	46 - 34	7	12	1.47	1.51	2	14	14	28	0	6	6	8
12	Antonio Reeves	23:54	16:06	39 - 25	21 - 16	14	5	1.63	1.30	9	7	27	15	4	2	8	6
22	Cason Wallace	30:17	09:43	45 - 32	15 - 9	13	6	1.49	1.54	10	6	32	10	6	0	8	6
24	Chris Livingston	12:01	27:59	18 - 10	42 - 31	8	11	1.50	1.50	6	10	13	29	1	5	6	8
34	Oscar Tshiebwe	32:18	07:42	53 - 32	7 - 9	21	-2	1.64	0.91	13	3	36	6	6	0	9	5
55	Lance Ware	07:32	32:28	7 - 9	53 - 32	-2	21	0.93	1.63	3	13	6	36	0	6	5	9



**Bellarmine at Kentucky**

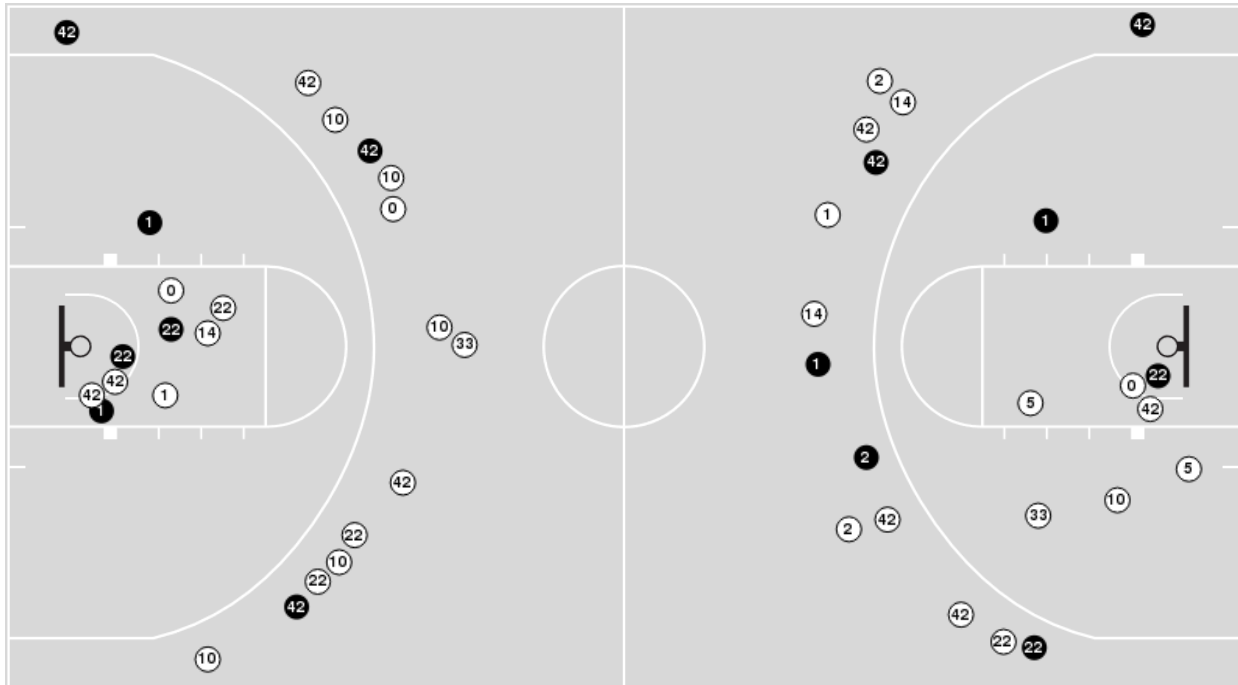
11/29/22 Rupp Arena, Lexington  
2022-23 Men's Basketball

Officials: Pat Adams, Byron Jarrett, Shaun Seales

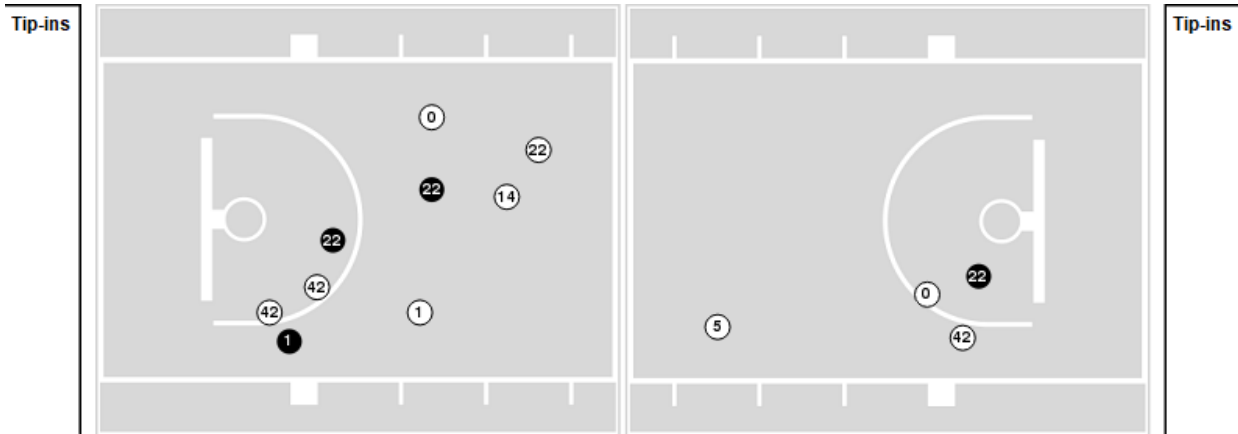
Players => 0, 1, 2, 4, 5, 10, 11, 12, 14, 22, 23, 24, 30, 33, 34, 42, 55FG Types=>AllResults=>All

**Bellarmine**

**All Field Goals**



**Blow Up Chart**



● Made    ○ Missed    N - Player Number

Bellarmine	M/A	%
Field Goals	14/46	30
2 Points	6/18	33
3 Points	8/28	29
Free Throws	5/6	83

Bellarmine	M/A	%
Points in the Paint	8 (4 / 13)	31
Fast Break Points	0 (0/0)	0
Second Chance Points	2 (1/2)	50
Effective FG%	39	



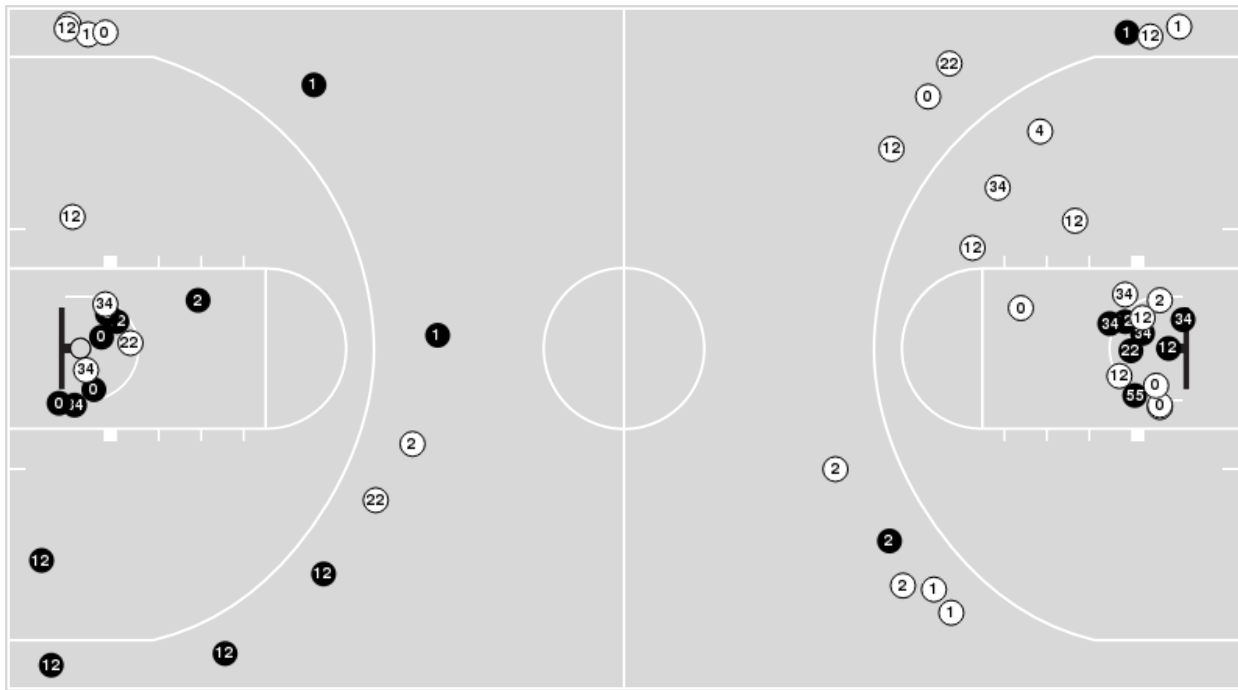


**Officials:** Pat Adams, Byron Jarrett, Shaun Seales

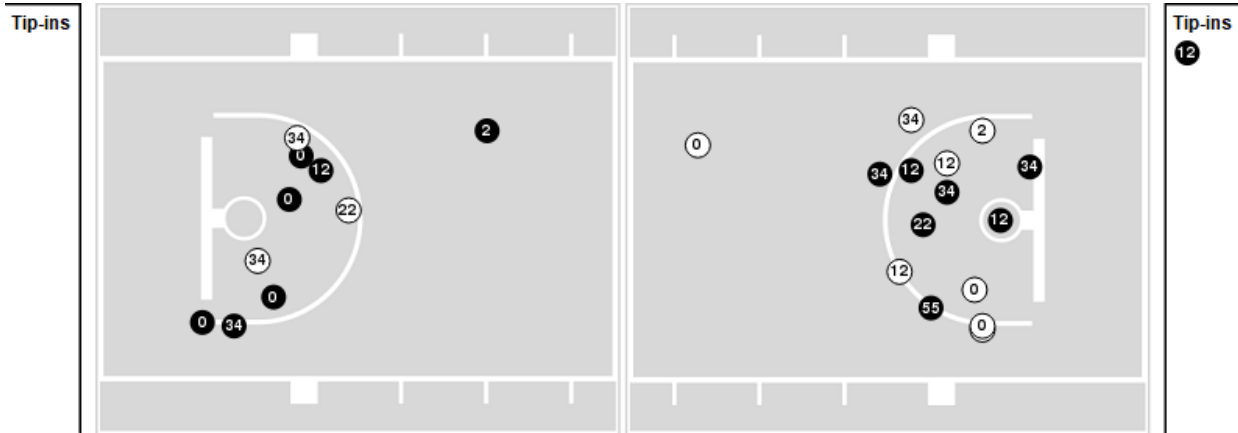
Players => AllFG Types=>AllResults=>All

**Kentucky**

**All Field Goals**



**Blow Up Chart**



● Made    ○ Missed    N - Player Number

Kentucky	M/A	%
Field Goals	22/53	42
2 Points	15/31	48
3 Points	7/22	32
Free Throws	9/11	82

Kentucky	M/A	%
Points in the Paint	28 (14 / 25)	56
Fast Break Points	13 (8/9)	89
Second Chance Points	13 (7/12)	58
Effective FG%	48	



**Bellarmine at Kentucky**

11/29/22 Rupp Arena, Lexington  
2022-23 Men's Basketball

**Game Time:** 7:00 PM  
**Game Duration:** 1:52  
**Attendance:** 19,092

**Officials:** Pat Adams, Byron Jarrett, Shaun Seales

**Bellarmine**

Lineup	Quarter On	Time On	Quarter Off	Time Off	Time on Court	Score	Score Diff	Reb	Stl	Tov	Ass	PPP
1- Betz J/ 5- Suder P/ 10- Tipton G/ 22- Wieland B/ 42- Hopf C/	1	20:00	1	16:37	03:23	3-0	3	2	2	1	1	0.6000
1- Betz J/ 2- Pfriem A/ 10- Tipton G/ 22- Wieland B/ 42- Hopf C/	1	16:37	1	14:48	01:49	3-4	-1	1	0	0	1	1.5000
1- Betz J/ 2- Pfriem A/ 5- Suder P/ 10- Tipton G/ 12- Hatton L/	1	14:48	1	14:48	00:00	2-0	2	0	0	0	0	2.2727
1- Betz J/ 2- Pfriem A/ 5- Suder P/ 12- Hatton L/ 33- Johnson B/	1	14:48	1	13:10	01:38	0-0	0	0	0	1	0	0.0000
2- Pfriem A/ 5- Suder P/ 10- Tipton G/ 12- Hatton L/ 33- Johnson B/	1	13:10	1	12:15	00:55	0-0	0	0	1	0	0	0.0000
5- Suder P/ 10- Tipton G/ 22- Wieland B/ 33- Johnson B/ 42- Hopf C/	1	12:15	1	10:44	01:31	2-2	0	2	0	0	0	1.0000
1- Betz J/ 5- Suder P/ 10- Tipton G/ 14- DeVault S/ 22- Wieland B/	1	10:44	1	08:19	02:25	2-6	-4	1	0	0	0	0.6667
1- Betz J/ 2- Pfriem A/ 10- Tipton G/ 12- Hatton L/ 22- Wieland B/	1	08:19	1	07:53	00:26	0-0	0	0	0	0	0	0.0000
1- Betz J/ 2- Pfriem A/ 12- Hatton L/ 22- Wieland B/ 33- Johnson B/	1	07:53	1	05:27	02:26	0-0	0	3	0	2	0	0.0000
0- Fairman J/ 2- Pfriem A/ 10- Tipton G/ 33- Johnson B/ 42- Hopf C/	1	05:27	1	05:13	00:14	2-1	1	0	0	0	0	2.2727
0- Fairman J/ 2- Pfriem A/ 5- Suder P/ 10- Tipton G/ 33- Johnson B/	1	05:13	1	03:27	01:46	0-8	-8	0	0	0	0	0.0000
1- Betz J/ 2- Pfriem A/ 10- Tipton G/ 33- Johnson B/ 42- Hopf C/	1	03:27	1	01:18	02:09	7-0	7	2	0	0	2	1.7500
0- Fairman J/ 2- Pfriem A/ 10- Tipton G/ 12- Hatton L/ 33- Johnson B/	1	01:18	1	00:10	01:07	0-0	0	1	1	0	0	0.0000
1- Betz J/ 2- Pfriem A/ 10- Tipton G/ 12- Hatton L/ 22- Wieland B/	1	00:10	2	20:00	00:11	0-0	0	1	0	0	0	0.0000
1- Betz J/ 5- Suder P/ 10- Tipton G/ 22- Wieland B/ 42- Hopf C/	2	20:00	2	18:43	01:17	3-3	0	0	0	1	1	1.5000
1- Betz J/ 2- Pfriem A/ 10- Tipton G/ 22- Wieland B/ 42- Hopf C/	2	18:43	2	16:33	02:10	5-4	1	2	0	0	1	1.6667
1- Betz J/ 2- Pfriem A/ 5- Suder P/ 22- Wieland B/ 42- Hopf C/	2	16:33	2	15:13	01:20	3-0	3	0	0	1	1	1.5000
1- Betz J/ 2- Pfriem A/ 22- Wieland B/ 33- Johnson B/ 42- Hopf C/	2	15:13	2	13:31	01:42	0-3	-3	0	1	0	0	0.0000
1- Betz J/ 2- Pfriem A/ 10- Tipton G/ 12- Hatton L/ 33- Johnson B/	2	13:31	2	12:56	00:35	0-1	-1	0	1	0	0	0.0000
1- Betz J/ 5- Suder P/ 10- Tipton G/ 12- Hatton L/ 33- Johnson B/	2	12:56	2	12:15	00:41	0-1	-1	1	0	1	0	0.0000
0- Fairman J/ 2- Pfriem A/ 10- Tipton G/ 22- Wieland B/ 42- Hopf C/	2	12:15	2	11:44	00:31	0-1	-1	0	0	1	0	0.0000
0- Fairman J/ 2- Pfriem A/ 10- Tipton G/ 14- DeVault S/ 22- Wieland B/	2	11:44	2	11:15	00:29	0-2	-2	0	0	0	0	0.0000
0- Fairman J/ 1- Betz J/ 2- Pfriem A/ 14- DeVault S/ 22- Wieland B/	2	11:15	2	07:03	04:12	3-10	-7	2	0	2	1	0.5000
1- Betz J/ 5- Suder P/ 22- Wieland B/ 33- Johnson B/ 42- Hopf C/	2	07:03	2	04:23	02:40	2-5	-3	2	0	1	0	0.5000
1- Betz J/ 2- Pfriem A/ 10- Tipton G/ 33- Johnson B/ 42- Hopf C/	2	04:23	2	02:39	01:44	0-5	-5	0	1	0	0	0.0000
1- Betz J/ 2- Pfriem A/ 10- Tipton G/ 22- Wieland B/ 42- Hopf C/	2	02:39	2	00:00	02:39	4-4	0	1	0	1	1	1.0309



**Bellarmine at Kentucky**

11/29/22 Rupp Arena, Lexington  
2022-23 Men's Basketball

**Game Time:** 7:00 PM  
**Game Duration:** 1:52  
**Attendance:** 19,092

**Officials:** Pat Adams, Byron Jarrett, Shaun Seales

**Kentucky**

Lineup	Quarter On	Time On	Quarter Off	Time Off	Time on Court	Score	Score Diff	Reb	Stl	Tov	Ass	PPP
0- Toppin J/ 2- Wheeler S/ 12- Reeves A/ 22- Wallace C/ 34- Tshiebwe O/	1	20:00	1	14:48	05:12	4-6	-2	7	1	3	1	0.5000
1- Fredrick C/ 2- Wheeler S/ 4- Collins D/ 24- Livingston C/ 55- Ware L/	1	14:48	1	13:10	01:38	0-2	-2	1	0	2	0	0.0000
0- Toppin J/ 1- Fredrick C/ 2- Wheeler S/ 24- Livingston C/ 55- Ware L/	1	13:10	1	10:44	02:26	2-2	0	3	0	2	1	0.6667
1- Fredrick C/ 4- Collins D/ 12- Reeves A/ 22- Wallace C/ 34- Tshiebwe O/	1	10:44	1	08:19	02:25	6-2	4	6	0	0	1	1.5000
0- Toppin J/ 1- Fredrick C/ 12- Reeves A/ 22- Wallace C/ 34- Tshiebwe O/	1	08:19	1	07:53	00:26	0-0	0	0	0	0	0	0.0000
0- Toppin J/ 1- Fredrick C/ 2- Wheeler S/ 22- Wallace C/ 34- Tshiebwe O/	1	07:53	1	06:58	00:55	0-0	0	0	0	0	0	0.0000
0- Toppin J/ 2- Wheeler S/ 22- Wallace C/ 24- Livingston C/ 34- Tshiebwe O/	1	06:58	1	05:13	01:45	1-1	0	2	1	0	0	0.3472
0- Toppin J/ 1- Fredrick C/ 2- Wheeler S/ 24- Livingston C/ 34- Tshiebwe O/	1	05:13	1	02:14	02:59	8-3	5	4	0	1	3	1.6000
0- Toppin J/ 1- Fredrick C/ 2- Wheeler S/ 22- Wallace C/ 34- Tshiebwe O/	1	02:14	2	20:00	02:14	0-5	-5	2	0	1	0	0.0000
0- Toppin J/ 2- Wheeler S/ 12- Reeves A/ 22- Wallace C/ 34- Tshiebwe O/	2	20:00	2	16:33	03:27	7-8	-1	1	1	0	3	1.2868
2- Wheeler S/ 4- Collins D/ 12- Reeves A/ 22- Wallace C/ 55- Ware L/	2	16:33	2	15:13	01:20	0-3	-3	0	0	1	0	0.0000
2- Wheeler S/ 4- Collins D/ 12- Reeves A/ 22- Wallace C/ 34- Tshiebwe O/	2	15:13	2	13:31	01:42	3-0	3	4	0	1	1	1.2295
0- Toppin J/ 2- Wheeler S/ 12- Reeves A/ 22- Wallace C/ 34- Tshiebwe O/	2	13:31	2	12:41	00:50	1-0	1	1	0	1	0	0.6944
0- Toppin J/ 1- Fredrick C/ 12- Reeves A/ 22- Wallace C/ 34- Tshiebwe O/	2	12:41	2	11:12	01:29	4-0	4	1	1	0	0	1.4493
0- Toppin J/ 1- Fredrick C/ 2- Wheeler S/ 22- Wallace C/ 34- Tshiebwe O/	2	11:12	2	07:03	04:09	10-3	7	3	1	0	3	1.6667
0- Toppin J/ 2- Wheeler S/ 12- Reeves A/ 24- Livingston C/ 55- Ware L/	2	07:03	2	04:55	02:08	5-2	3	2	0	0	2	1.6667
2- Wheeler S/ 4- Collins D/ 12- Reeves A/ 24- Livingston C/ 34- Tshiebwe O/	2	04:55	2	04:23	00:32	0-0	0	0	0	1	0	0.0000
2- Wheeler S/ 4- Collins D/ 12- Reeves A/ 22- Wallace C/ 34- Tshiebwe O/	2	04:23	2	02:39	01:44	5-0	5	3	0	1	0	1.6667
0- Toppin J/ 2- Wheeler S/ 4- Collins D/ 12- Reeves A/ 22- Wallace C/	2	02:39	2	02:29	00:10	0-0	0	0	0	0	0	0.0000
0- Toppin J/ 2- Wheeler S/ 12- Reeves A/ 22- Wallace C/ 34- Tshiebwe O/	2	02:29	2	00:32	01:56	2-4	-2	1	1	0	1	1.0000
0- Toppin J/ 12- Reeves A/ 22- Wallace C/ 24- Livingston C/ 34- Tshiebwe O/	2	00:32	2	00:00	00:33	2-0	2	1	0	0	0	2.2727



**Bellarmine at Kentucky**

11/29/22 Rupp Arena, Lexington  
2022-23 Men's Basketball

**Game Time:** 7:00 PM  
**Game Duration:** 1:52  
**Attendance:** 19,092

**Officials:** Pat Adams, Byron Jarrett, Shaun Seales

**Bellarmine**

Lineup	Time	Score	Score Diff	Pts/Min	Reb	Stl	Tov	Ass	PPP
1- Betz J/ 2- Pfriem A/ 10- Tipton G/ 22- Wieland B/ 42- Hopf C/	06:38	12-12	0	1.8090	4	0	1	3	1.3514
1- Betz J/ 5- Suder P/ 10- Tipton G/ 22- Wieland B/ 42- Hopf C/	04:40	6-3	3	1.2857	2	2	2	2	0.8571
0- Fairman J/ 1- Betz J/ 2- Pfriem A/ 14- DeVault S/ 22- Wieland B/	04:12	3-10	-7	0.7143	2	0	2	1	0.5000
1- Betz J/ 2- Pfriem A/ 10- Tipton G/ 33- Johnson B/ 42- Hopf C/	03:53	7-5	2	1.8026	2	1	0	2	1.0000
1- Betz J/ 5- Suder P/ 22- Wieland B/ 33- Johnson B/ 42- Hopf C/	02:40	2-5	-3	0.7500	2	0	1	0	0.5000
1- Betz J/ 2- Pfriem A/ 12- Hatton L/ 22- Wieland B/ 33- Johnson B/	02:26	0-0	0	0.0000	3	0	2	0	0.0000
1- Betz J/ 5- Suder P/ 10- Tipton G/ 14- DeVault S/ 22- Wieland B/	02:25	2-6	-4	0.8276	1	0	0	0	0.6667
0- Fairman J/ 2- Pfriem A/ 5- Suder P/ 10- Tipton G/ 33- Johnson B/	01:46	0-8	-8	0.0000	0	0	0	0	0.0000
1- Betz J/ 2- Pfriem A/ 22- Wieland B/ 33- Johnson B/ 42- Hopf C/	01:42	0-3	-3	0.0000	0	1	0	0	0.0000
1- Betz J/ 2- Pfriem A/ 5- Suder P/ 12- Hatton L/ 33- Johnson B/	01:38	0-0	0	0.0000	0	0	1	0	0.0000
5- Suder P/ 10- Tipton G/ 22- Wieland B/ 33- Johnson B/ 42- Hopf C/	01:31	2-2	0	1.3187	2	0	0	0	1.0000
1- Betz J/ 2- Pfriem A/ 5- Suder P/ 22- Wieland B/ 42- Hopf C/	01:20	3-0	3	2.2500	0	0	1	1	1.5000
0- Fairman J/ 2- Pfriem A/ 10- Tipton G/ 12- Hatton L/ 33- Johnson B/	01:07	0-0	0	0.0000	1	1	0	0	0.0000
2- Pfriem A/ 5- Suder P/ 10- Tipton G/ 12- Hatton L/ 33- Johnson B/	00:55	0-0	0	0.0000	0	1	0	0	0.0000
1- Betz J/ 5- Suder P/ 10- Tipton G/ 12- Hatton L/ 33- Johnson B/	00:41	0-1	-1	0.0000	1	0	1	0	0.0000
1- Betz J/ 2- Pfriem A/ 10- Tipton G/ 12- Hatton L/ 22- Wieland B/	00:37	0-0	0	0.0000	1	0	0	0	0.0000
1- Betz J/ 2- Pfriem A/ 10- Tipton G/ 12- Hatton L/ 33- Johnson B/	00:35	0-1	-1	0.0000	0	1	0	0	0.0000
0- Fairman J/ 2- Pfriem A/ 10- Tipton G/ 22- Wieland B/ 42- Hopf C/	00:31	0-1	-1	0.0000	0	0	1	0	0.0000
0- Fairman J/ 2- Pfriem A/ 10- Tipton G/ 14- DeVault S/ 22- Wieland B/	00:29	0-2	-2	0.0000	0	0	0	0	0.0000
0- Fairman J/ 2- Pfriem A/ 10- Tipton G/ 33- Johnson B/ 42- Hopf C/	00:14	2-1	1	8.5714	0	0	0	0	2.2727
1- Betz J/ 2- Pfriem A/ 5- Suder P/ 10- Tipton G/ 12- Hatton L/	00:00	2-0	2	∞	0	0	0	0	2.2727



**Bellarmine at Kentucky**

11/29/22 Rupp Arena, Lexington  
2022-23 Men's Basketball

**Game Time:** 7:00 PM  
**Game Duration:** 1:52  
**Attendance:** 19,092

**Officials:** Pat Adams, Byron Jarrett, Shaun Seales

**Kentucky**

Lineup	Time	Score	Score Diff	Pts/Min	Reb	Stl	Tov	Ass	PPP
0- Toppin J/ 2- Wheeler S/ 12- Reeves A/ 22- Wallace C/ 34- Tshiebwe O/	11:25	14-18	-4	1.2263	10	3	4	5	0.8294
0- Toppin J/ 1- Fredrick C/ 2- Wheeler S/ 22- Wallace C/ 34- Tshiebwe O/	07:18	10-8	2	1.3699	5	1	1	3	0.9091
2- Wheeler S/ 4- Collins D/ 12- Reeves A/ 22- Wallace C/ 34- Tshiebwe O/	03:26	8-0	8	2.3301	7	0	2	1	1.4706
0- Toppin J/ 1- Fredrick C/ 2- Wheeler S/ 24- Livingston C/ 34- Tshiebwe O/	02:59	8-3	5	2.6816	4	0	1	3	1.6000
0- Toppin J/ 1- Fredrick C/ 2- Wheeler S/ 24- Livingston C/ 55- Ware L/	02:26	2-2	0	0.8219	3	0	2	1	0.6667
1- Fredrick C/ 4- Collins D/ 12- Reeves A/ 22- Wallace C/ 34- Tshiebwe O/	02:25	6-2	4	2.4828	6	0	0	1	1.5000
0- Toppin J/ 2- Wheeler S/ 12- Reeves A/ 24- Livingston C/ 55- Ware L/	02:08	5-2	3	2.3438	2	0	0	2	1.6667
0- Toppin J/ 1- Fredrick C/ 12- Reeves A/ 22- Wallace C/ 34- Tshiebwe O/	01:55	4-0	4	2.0870	1	1	0	0	1.4493
0- Toppin J/ 2- Wheeler S/ 22- Wallace C/ 24- Livingston C/ 34- Tshiebwe O/	01:45	1-1	0	0.5714	2	1	0	0	0.3472
1- Fredrick C/ 2- Wheeler S/ 4- Collins D/ 24- Livingston C/ 55- Ware L/	01:38	0-2	-2	0.0000	1	0	2	0	0.0000
2- Wheeler S/ 4- Collins D/ 12- Reeves A/ 22- Wallace C/ 55- Ware L/	01:20	0-3	-3	0.0000	0	0	1	0	0.0000
0- Toppin J/ 12- Reeves A/ 22- Wallace C/ 24- Livingston C/ 34- Tshiebwe O/	00:33	2-0	2	3.6364	1	0	0	0	2.2727
2- Wheeler S/ 4- Collins D/ 12- Reeves A/ 24- Livingston C/ 34- Tshiebwe O/	00:32	0-0	0	0.0000	0	0	1	0	0.0000
0- Toppin J/ 2- Wheeler S/ 4- Collins D/ 12- Reeves A/ 22- Wallace C/	00:10	0-0	0	0.0000	0	0	0	0	0.0000