



Officials: David Hall, Michael Greenstein, Frank Hardie III

Kentucky - 72

Record: 3-2

NO.	Name	F	Min	FG	3P	FT	Rebounds			Fouls		TP	AS	TO	ST	Blocks		+/-
				M-A	M-A	M-A	OR	DR	TOT	PF	FD					BS	BA	
0	Jacob Toppin	F	35:58	7-18	0-4	2-4	1	2	3	2	3	16	1	2	0	0	1	-7
34	Oscar Tshiebwe	F	28:34	7-12	0-0	6-6	6	9	15	4	3	20	0	2	2	0	0	-9
1	CJ Fredrick	G	35:42	1-9	1-6	0-0	2	0	2	1	0	3	3	2	1	0	1	-14
2	Sahvir Wheeler	G	17:14	2-6	1-4	2-3	0	1	1	4	3	7	4	1	0	0	0	-3
22	Cason Wallace	G	34:53	5-9	2-3	2-2	0	2	2	4	2	14	2	3	4	0	0	-15
55	Lance Ware		10:03	1-1	0-0	0-0	0	1	1	4	0	2	0	0	1	0	0	-7
12	Antonio Reeves		23:58	4-13	2-7	0-1	2	0	2	1	1	10	1	0	1	0	0	-11
4	Daimion Collins		04:02	0-0	0-0	0-0	0	0	0	1	0	0	0	1	1	0	0	-9
24	Chris Livingston		08:13	0-1	0-1	0-0	0	2	2	1	0	0	0	0	0	0	0	-5
33	Ugonna Onyenso		01:23	0-0	0-0	0-0	0	0	0	0	0	0	0	0	0	0	0	0
Team							0	1	1			0		0				
Totals				27-69	6-25	12-16	11	18	29	22	12	72	11	11	10	0	2	-16

Shooting By Period		
1 st FG%	8-32	25.0%
3PT%	0-10	0.0%
FT%	9-11	81.8%
2 nd FG%	19-37	51.4%
3PT%	6-15	40.0%
FT%	3-5	60%
GM FG%	27-69	39.1%
3PT%	6-25	24.0%
FT%	12-16	75.0%

Dead Ball Rebounds: 3, 0

Technical Fouls::NONE

Gonzaga - 88

Record: 3-1

NO.	Name	F	Min	FG	3P	FT	Rebounds			Fouls		TP	AS	TO	ST	Blocks		+/-
				M-A	M-A	M-A	OR	DR	TOT	PF	FD					BS	BA	
2	Drew Timme	F	35:55	9-13	0-1	4-6	1	6	7	2	10	22	3	4	1	0	0	12
22	Anton Watson	F	37:35	5-8	0-2	0-0	2	8	10	2	0	10	2	1	2	1	0	15
0	Julian Strawther	G	39:51	5-10	3-4	7-7	1	13	14	0	4	20	0	5	2	1	0	16
11	Nolan Hickman	G	28:27	1-3	0-2	2-2	0	0	0	4	2	4	2	2	1	0	0	25
45	Rasir Bolton	G	30:55	8-14	4-8	4-4	1	0	1	1	3	24	0	2	0	0	0	12
13	Malachi Smith		11:00	1-2	0-0	0-0	1	0	1	0	0	2	1	0	0	0	0	-5
5	Hunter Sallis		09:47	2-3	0-0	0-0	1	2	3	2	1	4	0	1	0	0	0	0
15	Efton Reid		02:25	0-1	0-1	0-0	0	1	1	0	1	0	0	2	0	0	0	1
33	Ben Gregg		04:05	0-1	0-1	2-2	0	1	1	1	1	2	0	0	1	0	0	4
Team							0	1	1			0		1				
Totals				31-55	7-19	19-21	7	32	39	12	22	88	8	18	7	2	0	16

Shooting By Period		
1 st FG%	16-29	55.2%
3PT%	3-11	27.3%
FT%	6-6	100%
2 nd FG%	15-26	57.7%
3PT%	4-8	50.0%
FT%	13-15	86.7%
GM FG%	31-55	56.4%
3PT%	7-19	36.8%
FT%	19-21	90.5%

Dead Ball Rebounds: 1, 0

Technical Fouls::NONE

	UKY	GON
Biggest lead	0 (1 st 20:00)	19 (2 nd 0:15)
Best Scoring Run	7(2 nd 13:30)	10(2 nd 0:15)
Lead Changes	0	
Times Tied	0	
Time with Lead	00:00	39:21

Points from	UKY	GON
Turnovers	13	18
Paint	24	44
Second Chance	12	11
Fast Breaks	5	6
Bench	12	8

	Period by Period Scoring		
	1st	2nd	TOT
UKY	25	47	72
GON	41	47	88



Period 1

Quarter Starters:

GON	0 Strawther J	2 Timme D	11 Hickman N	22 Watson A	45 Bolton R
UKY	0 Toppin J	1 Fredrick C	2 Wheeler S	22 Wallace C	34 Tshiebwe O

Game Time	GON	Score	Diff	UKY
20:00	2 TIMME D jumpball lost			34 TSHIEBWE O jumpball won
19:31				22 WALLACE C 3pt FG , jump shot missed
19:28	0 STRAWTHER J defensive rebound (1)			
19:21	45 BOLTON R 3pt FG , jump shot made (3)	3-0	3	
19:21	2 TIMME D assist (1)			
19:10				1 FREDRICK C 3pt FG , jump shot blocked
19:10	0 STRAWTHER J block (1)			
19:06	0 STRAWTHER J defensive rebound (2)			
19:06	0 STRAWTHER J foul drawn (1)			2 WHEELER S foul personal (1 - 1)
18:57	2 TIMME D foul drawn (1)			0 TOPPIN J foul personal (1 - 2)
18:53	0 STRAWTHER J 3pt FG , jump shot made (3)	6-0	6	
18:53	2 TIMME D assist (2)			
18:30				34 TSHIEBWE O 2pt FG in the paint, hook shot missed
18:27	22 WATSON A defensive rebound (1)			
18:16	45 BOLTON R turnover bad pass (1)			34 TSHIEBWE O steal (1)
18:12				2 WHEELER S 2pt FG from turnover in the paint, layup missed
18:09	2 TIMME D defensive rebound (1)			
18:06	0 STRAWTHER J turnover lost ball (1)			
17:55				2 WHEELER S 3pt FG from turnover, jump shot missed
17:52	2 TIMME D defensive rebound (2)			
17:45	2 TIMME D 2pt FG outside the paint, floating jump shot made (2)	8-0	8	
17:33		8-2	6	34 TSHIEBWE O 2pt FG in the paint, layup made (2)
17:33				0 TOPPIN J assist (1)
17:22	2 TIMME D turnover lost ball (1)			22 WALLACE C steal (1)
17:10				0 TOPPIN J 2pt FG from turnover outside the paint, pull up jump shot missed
17:01	0 STRAWTHER J defensive rebound (3)			
16:52	2 TIMME D 2pt FG in the paint, dunk, made (4)	10-2	8	
16:29				34 TSHIEBWE O substitution out
16:29				55 WARE L substitution in
16:21	45 BOLTON R foul shooting (1 - 1)			0 TOPPIN J foul drawn (1)
16:21		10-3	7	0 TOPPIN J free throw 1 - 2 made (1)
16:21		10-4	6	0 TOPPIN J free throw 2 - 2 made (2)
16:21				2 WHEELER S substitution out
16:21				12 REEVES A substitution in
16:01	11 HICKMAN N turnover lost ball (1)			22 WALLACE C steal (2)
15:52		10-6	4	55 WARE L 2pt FG from turnover in the paint, alleyoop made (2)
15:52				22 WALLACE C assist (1)
15:35	22 WATSON A 2pt FG in the paint, layup made (2)	12-6	6	
15:35	11 HICKMAN N assist (1)			
15:12				12 REEVES A 2pt FG outside the paint, pull up jump shot missed
15:08	0 STRAWTHER J defensive rebound (4)			
14:47	11 HICKMAN N 3pt FG , jump shot missed			



Official Basketball Play by Play - First Half
Kentucky at Gonzaga
 11/20/22 Spokane Veterans Memorial Arena, Spokane
 Kentucky vs Gonzaga

Game Time: 4:30 PM
Game Duration: 2:06
Attendance: 12,333

Officials: David Hall, Michael Greenstein, Frank Hardie III

Game Time	GON	Score	Diff	UKY
14:42	22 WATSON A offensive rebound (2)			
14:41	45 BOLTON R 3pt FG second chance, jump shot missed			
14:40				defensive rebound (1)
14:40	Timeout media			
14:40				0 TOPPIN J substitution out
14:40				4 COLLINS D substitution in
14:27				1 FREDRICK C 3pt FG , jump shot missed
14:23	22 WATSON A defensive rebound (3)			
14:20	2 TIMME D 2pt FG fast break in the paint, dunk, made (6)	14-6	8	
14:20	22 WATSON A assist (1)			
14:03				22 WALLACE C 2pt FG in the paint, driving layup missed
14:00	2 TIMME D defensive rebound (3)			
13:41	2 TIMME D foul drawn (2)			55 WARE L foul personal (1 - 3)
13:41	45 BOLTON R substitution out			
13:41	13 SMITH M substitution in			
13:41				1 FREDRICK C substitution out
13:41				55 WARE L substitution out
13:41				2 WHEELER S substitution in
13:41				34 TSHIEBWE O substitution in
13:24	13 SMITH M 2pt FG in the paint, layup made (2)	16-6	10	
12:58				34 TSHIEBWE O 2pt FG in the paint, hook shot missed
12:55	2 TIMME D defensive rebound (4)			
12:49	2 TIMME D 3pt FG , jump shot missed			
12:45	13 SMITH M offensive rebound (1)			
12:43	0 STRAWTHER J 3pt FG second chance, jump shot made (6)	19-6	13	
12:43	13 SMITH M assist (1)			
12:40				Timeout 30 Sec
12:27		19-8	11	12 REEVES A 2pt FG outside the paint, pull up jump shot made (2)
12:06	22 WATSON A turnover lost ball (1)			4 COLLINS D steal (1)
12:02	2 TIMME D foul shooting (1 - 2)			34 TSHIEBWE O foul drawn (1)
12:02		19-9	10	34 TSHIEBWE O free throw fast break 1 - 2 made (3)
12:02				4 COLLINS D substitution out
12:02				22 WALLACE C substitution out
12:02				0 TOPPIN J substitution in
12:02				24 LIVINGSTON C substitution in
12:02		19-10	9	34 TSHIEBWE O free throw fast break 2 - 2 made (4)
11:44	2 TIMME D 2pt FG outside the paint, turnaround jump shot missed			
11:41				2 WHEELER S defensive rebound (1)
11:38				24 LIVINGSTON C 3pt FG , step back jump shot missed
11:33	22 WATSON A defensive rebound (4)			
11:27	0 STRAWTHER J 2pt FG in the paint, floating jump shot made (8)	21-10	11	
11:11	22 WATSON A foul shooting (1 - 3)			34 TSHIEBWE O foul drawn (2)
11:11	Timeout media			
11:11	11 HICKMAN N substitution out			
11:11	5 SALLIS H substitution in			
11:11		21-11	10	34 TSHIEBWE O free throw 1 - 2 made (5)
11:11		21-12	9	34 TSHIEBWE O free throw 2 - 2 made (6)



Official Basketball Play by Play - First Half
Kentucky at Gonzaga
 11/20/22 Spokane Veterans Memorial Arena, Spokane
 Kentucky vs Gonzaga

Game Time: 4:30 PM
Game Duration: 2:06
Attendance: 12,333

Officials: David Hall, Michael Greenstein, Frank Hardie III

Game Time	GON	Score	Diff	UKY
11:00	0 STRAWTHER J turnover bad pass (2)			12 REEVES A steal (1)
10:54				12 REEVES A 3pt FG from turnover, jump shot missed
10:50	0 STRAWTHER J defensive rebound (5)			
10:43	0 STRAWTHER J 2pt FG in the paint, hook shot missed			
10:39				34 TSHIEBWE O defensive rebound (1)
10:35	5 SALLIS H foul shooting (1 - 4)			2 WHEELER S foul drawn (1)
10:35				2 WHEELER S free throw fast break 1 - 2 missed
10:35				offensive dead ball rebound (1)
10:35	13 SMITH M substitution out			
10:35	22 WATSON A substitution out			
10:35	11 HICKMAN N substitution in			
10:35	15 REID E substitution in			
10:35				24 LIVINGSTON C substitution out
10:35				22 WALLACE C substitution in
10:35		21-13	8	2 WHEELER S free throw fast break 2 - 2 made (1)
10:15	11 HICKMAN N 2pt FG outside the paint, floating jump shot made (2)	23-13	10	
10:06				12 REEVES A 2pt FG in the paint, floating jump shot missed
10:01				12 REEVES A offensive rebound (1)
10:00				12 REEVES A 2pt FG second chance in the paint, jump shot missed
09:56				34 TSHIEBWE O offensive rebound (2)
09:54		23-15	8	34 TSHIEBWE O 2pt FG second chance in the paint, dunk, made (8)
09:37	15 REID E 3pt FG , jump shot missed			
09:32	5 SALLIS H offensive rebound (1)			
09:31	5 SALLIS H 2pt FG second chance in the paint, layup made (2)	25-15	10	
09:23	11 HICKMAN N foul personal (1 - 5)			22 WALLACE C foul drawn (1)
09:23				12 REEVES A substitution out
09:23				1 FREDRICK C substitution in
09:15				0 TOPPIN J 2pt FG in the paint, driving layup missed
09:12	15 REID E defensive rebound (1)			
09:12	15 REID E foul drawn (1)			34 TSHIEBWE O foul personal (1 - 4)
08:47	15 REID E turnover 3 seconds (1)			
08:28				2 WHEELER S 3pt FG from turnover, jump shot missed
08:25	0 STRAWTHER J defensive rebound (6)			
08:10	15 REID E turnover travel (2)			
08:10	15 REID E substitution out			
08:10	22 WATSON A substitution in			
07:56				0 TOPPIN J 2pt FG from turnover in the paint, alleyoop missed
07:52				34 TSHIEBWE O offensive rebound (3)
07:51				34 TSHIEBWE O 2pt FG from turnover second chance in the paint, dunk, missed
07:48	5 SALLIS H defensive rebound (2)			
07:46	2 TIMME D foul drawn (3)			2 WHEELER S foul personal (2 - 5)
07:46				Timeout media
07:46	5 SALLIS H substitution out			
07:46	45 BOLTON R substitution in			
07:46				2 WHEELER S substitution out
07:46				12 REEVES A substitution in



Official Basketball Play by Play - First Half
Kentucky at Gonzaga
 11/20/22 Spokane Veterans Memorial Arena, Spokane
 Kentucky vs Gonzaga

Game Time: 4:30 PM
Game Duration: 2:06
Attendance: 12,333

Officials: David Hall, Michael Greenstein, Frank Hardie III

Game Time	GON	Score	Diff	UKY
07:36	45 BOLTON R 2pt FG in the paint, floating jump shot made (5)	27-15	12	
07:30				12 REEVES A 2pt FG in the paint, driving layup missed
07:27	0 STRAWTHER J defensive rebound (7)			
07:23	45 BOLTON R 3pt FG , jump shot missed			
07:19				22 WALLACE C defensive rebound (1)
07:08		27-17	10	0 TOPPIN J 2pt FG in the paint, layup made (4)
06:46	2 TIMME D foul drawn (4)			22 WALLACE C foul personal (1 - 6)
06:46				12 REEVES A substitution out
06:46				24 LIVINGSTON C substitution in
06:27	2 TIMME D 2pt FG outside the paint, step back jump shot missed			
06:22				24 LIVINGSTON C defensive rebound (1)
06:16		27-19	8	34 TSHIEBWE O 2pt FG in the paint, driving layup made (10)
06:01	2 TIMME D 2pt FG in the paint, driving layup made (8)	29-19	10	
05:50	22 WATSON A steal (1)			34 TSHIEBWE O turnover lost ball (1)
05:40	22 WATSON A 2pt FG from turnover in the paint, driving layup made (4)	31-19	12	
05:26				0 TOPPIN J 2pt FG outside the paint, pull up jump shot missed
05:23	0 STRAWTHER J defensive rebound (8)			
05:15	0 STRAWTHER J 3pt FG , jump shot missed			
05:11				34 TSHIEBWE O defensive rebound (4)
05:03		31-21	10	22 WALLACE C 2pt FG in the paint, dunk, made (2)
04:50	2 TIMME D 2pt FG in the paint, driving layup made (10)	33-21	12	
04:29	2 TIMME D steal (1)			34 TSHIEBWE O turnover lost ball (2)
04:26	2 TIMME D substitution out			
04:26	33 GREGG B substitution in			
04:26				0 TOPPIN J substitution out
04:26				34 TSHIEBWE O substitution out
04:26				4 COLLINS D substitution in
04:26				55 WARE L substitution in
04:16	11 HICKMAN N 3pt FG from turnover, jump shot missed			
04:13	0 STRAWTHER J offensive rebound (9)			
04:13	11 HICKMAN N foul drawn (1)			24 LIVINGSTON C foul shooting (1 - 7)
04:13	0 STRAWTHER J free throw 1 - 2 made (9)	34-21	13	
04:13	0 STRAWTHER J free throw 2 - 2 made (10)	35-21	14	
04:05				1 FREDRICK C 3pt FG , pull up jump shot missed
04:02	22 WATSON A defensive rebound (5)			
03:56	0 STRAWTHER J 2pt FG in the paint, driving layup missed			
03:52				24 LIVINGSTON C defensive rebound (2)
03:48	33 GREGG B steal (1)			22 WALLACE C turnover bad pass (1)
03:40	11 HICKMAN N foul drawn (2)			22 WALLACE C foul personal (2 - 8)
03:40				Timeout media
03:40	45 BOLTON R substitution out			
03:40	13 SMITH M substitution in			
03:40				22 WALLACE C substitution out
03:40				12 REEVES A substitution in
03:40	11 HICKMAN N 1&1 free throw 1 made (3)	36-21	15	
03:40	11 HICKMAN N 1&1 free throw 2 made (4)	37-21	16	
03:23				4 COLLINS D turnover travel (1)
03:02	33 GREGG B foul drawn (1)			4 COLLINS D foul shooting (1 - 9)



Official Basketball Play by Play - First Half
Kentucky at Gonzaga
 11/20/22 Spokane Veterans Memorial Arena, Spokane
 Kentucky vs Gonzaga

Game Time: 4:30 PM
Game Duration: 2:06
Attendance: 12,333

Officials: David Hall, Michael Greenstein, Frank Hardie III

Game Time	GON	Score	Diff	UKY
03:02	33 GREGG B free throw 1 - 2 made (1)	38-21	17	
03:02				4 COLLINS D substitution out
03:02				55 WARE L substitution out
03:02				0 TOPPIN J substitution in
03:02				34 TSHIEBWE O substitution in
03:02	33 GREGG B free throw 2 - 2 made (2)	39-21	18	
02:47				1 FREDRICK C 2pt FG in the paint, driving layup missed
02:46				34 TSHIEBWE O offensive rebound (5)
02:46	33 GREGG B foul shooting (1 - 6)			34 TSHIEBWE O foul drawn (3)
02:46		39-22	17	34 TSHIEBWE O free throw 1 - 2 made (11)
02:46		39-23	16	34 TSHIEBWE O free throw 2 - 2 made (12)
02:31	22 WATSON A 2pt FG in the paint, dunk, made (6)	41-23	18	
02:11		41-25	16	34 TSHIEBWE O 2pt FG in the paint, driving layup made (14)
01:54	13 SMITH M 2pt FG in the paint, jump shot missed			
01:49				34 TSHIEBWE O defensive rebound (6)
01:45				12 REEVES A 3pt FG , jump shot missed
01:43				12 REEVES A offensive rebound (2)
01:43	11 HICKMAN N foul personal (2 - 7)			12 REEVES A foul drawn (1)
01:43	11 HICKMAN N substitution out			
01:43	5 SALLIS H substitution in			
01:43				12 REEVES A 1&1 free throw 1 missed
01:42	33 GREGG B defensive rebound (1)			
01:23	33 GREGG B 3pt FG , jump shot missed			
01:19				34 TSHIEBWE O defensive rebound (7)
01:09	0 STRAWTHER J steal (1)			1 FREDRICK C turnover lost ball (1)
00:55	0 STRAWTHER J turnover lost ball (3)			1 FREDRICK C steal (1)
00:39	22 WATSON A steal (2)			0 TOPPIN J turnover bad pass (1)
00:30	Timeout 30 Sec			
00:30	5 SALLIS H substitution out			
00:30	33 GREGG B substitution out			
00:30	2 TIMME D substitution in			
00:30	45 BOLTON R substitution in			
00:09	turnover shot clock (10)			
00:08	0 STRAWTHER J substitution out			
00:08	2 TIMME D substitution out			
00:08	5 SALLIS H substitution in			
00:08	33 GREGG B substitution in			
00:00				0 TOPPIN J 3pt FG from turnover, jump shot missed
00:00	defensive rebound (24)			
END OF PERIOD				
GON 41-25 UKY				



Officials: David Hall, Michael Greenstein, Frank Hardie III

Kentucky - 25

NO.	Name	Min	FG			Rebounds			Fouls		TP	AS	TO	ST	Blocks		+/-
			M-A	3P	FT	OR	DR	TOT	PF	FD					BS	BA	
0	Jacob Toppin	F 15:58	1-6	0-1	2-2	0	0	0	1	1	4	1	1	0	0	0	-7
34	Oscar Tshiebwe	F 15:48	4-7	0-0	6-6	3	4	7	1	3	14	0	2	1	0	0	-11
1	CJ Fredrick	G 15:42	0-4	0-3	0-0	0	0	0	0	0	0	0	1	1	0	1	-14
2	Sahvir Wheeler	G 09:34	0-3	0-2	1-2	0	1	1	2	1	1	0	0	0	0	0	-8
22	Cason Wallace	G 14:53	1-3	0-1	0-0	0	1	1	2	1	2	1	1	2	0	0	-15
55	Lance Ware	04:12	1-1	0-0	0-0	0	0	0	1	0	2	0	0	0	0	0	-5
12	Antonio Reeves	11:38	1-7	0-2	0-1	2	0	2	0	1	2	0	0	1	0	0	-6
4	Daimion Collins	04:02	0-0	0-0	0-0	0	0	0	1	0	0	0	1	1	0	0	-9
24	Chris Livingston	08:13	0-1	0-1	0-0	0	2	2	1	0	0	0	0	0	0	0	-5
Team						0	1	1			0		0				
Totals			8-32	0-10	9-11	5	9	14	9	7	25	2	6	6	0	1	-16

Shooting By Period		
1st FG%	8-32	25.0%
3PT%	0-10	0.0%
FT%	9-11	81.8%
GM FG%	8-32	25.0%
3PT%	0-10	0.0%
FT%	9-11	81.8%

Dead Ball Rebounds: 1, 0

Technical Fouls::NONE

Gonzaga - 41

NO.	Name	Min	FG			Rebounds			Fouls		TP	AS	TO	ST	Blocks		+/-
			M-A	3P	FT	OR	DR	TOT	PF	FD					BS	BA	
2	Drew Timme	F 15:55	5-8	0-1	0-0	0	4	4	1	4	10	2	1	1	0	0	12
22	Anton Watson	F 17:35	3-3	0-0	0-0	1	4	5	1	0	6	1	1	2	0	0	15
0	Julian Strawther	G 19:51	3-6	2-3	2-2	1	8	9	0	1	10	0	3	1	1	0	16
11	Nolan Hickman	G 17:41	1-3	0-2	2-2	0	0	0	2	2	4	1	1	0	0	0	18
45	Rasir Bolton	G 10:55	2-4	1-3	0-0	0	0	0	1	0	5	0	1	0	0	0	12
13	Malachi Smith	06:46	1-2	0-0	0-0	1	0	1	0	0	2	1	0	0	0	0	3
5	Hunter Sallis	04:47	1-1	0-0	0-0	1	1	2	1	0	2	0	0	0	0	0	-1
15	Efton Reid	02:25	0-1	0-1	0-0	0	1	1	0	1	0	0	2	0	0	0	1
33	Ben Gregg	04:05	0-1	0-1	2-2	0	1	1	1	1	2	0	0	1	0	0	4
Team						0	1	1			0		1				
Totals			16-29	3-11	6-6	4	20	24	7	9	41	5	10	5	1	0	16

Shooting By Period		
1st FG%	16-29	55.2%
3PT%	3-11	27.3%
FT%	6-6	100%
GM FG%	16-29	55.2%
3PT%	3-11	27.3%
FT%	6-6	100.0%

Dead Ball Rebounds: 0, 0

Technical Fouls::NONE

	UKY	GON
Biggest lead	0 (1st 20:00)	18 (1st 3:02)
Best Scoring Run	4(1st 15:52)	9(1st 12:43)
Lead Changes	0	
Times Tied	0	
Time with Lead	00:00	19:21

	UKY	GON
Points from		
Turnovers	4	8
Paint	14	22
Second Chance	4	7
Fast Breaks	3	2
Bench	4	6

	Period by Period Scoring		
	1st	2nd	TOT
UKY	25	47	72
GON	41	47	88



Period 2

Quarter Starters:

GON	0 Strawther J	2 Timme D	11 Hickman N	22 Watson A	45 Bolton R
UKY	0 Toppin J	1 Fredrick C	2 Wheeler S	22 Wallace C	34 Tshiebwe O

Game Time	GON	Score	Diff	UKY
20:00	5 SALLIS H substitution out			
20:00	13 SMITH M substitution out			
20:00	33 GREGG B substitution out			
20:00	0 STRAWTHER J substitution in			
20:00	2 TIMME D substitution in			
20:00	11 HICKMAN N substitution in			
20:00				12 REEVES A substitution out
20:00				24 LIVINGSTON C substitution out
20:00				2 WHEELER S substitution in
20:00				22 WALLACE C substitution in
19:44	45 BOLTON R 2pt FG in the paint, layup made (7)	43-25	18	
19:32				2 WHEELER S 3pt FG , jump shot missed
19:29	0 STRAWTHER J defensive rebound (10)			
19:11	22 WATSON A 3pt FG , jump shot missed			
19:07				34 TSHIEBWE O defensive rebound (8)
18:54				0 TOPPIN J 2pt FG in the paint, jump shot missed
18:51	22 WATSON A defensive rebound (6)			
18:31	2 TIMME D turnover travel (2)			
18:07		43-28	15	1 FREDRICK C 3pt FG from turnover, jump shot made (3)
18:07				2 WHEELER S assist (1)
17:50	11 HICKMAN N turnover bad pass (2)			22 WALLACE C steal (3)
17:43				0 TOPPIN J 3pt FG from turnover, jump shot missed
17:39				34 TSHIEBWE O offensive rebound (9)
17:38		43-30	13	34 TSHIEBWE O 2pt FG from turnover second chance in the paint, layup made (16)
17:16	2 TIMME D 2pt FG in the paint, driving layup made (12)	45-30	15	
17:16	2 TIMME D foul drawn (5)			34 TSHIEBWE O foul shooting (2 - 1)
17:16	2 TIMME D free throw 1 - 1 missed			
17:15				34 TSHIEBWE O defensive rebound (10)
17:02		45-32	13	2 WHEELER S 2pt FG in the paint, driving layup made (3)
17:02	11 HICKMAN N foul shooting (3 - 1)			2 WHEELER S foul drawn (2)
17:02	11 HICKMAN N substitution out			
17:02	13 SMITH M substitution in			
17:02		45-33	12	2 WHEELER S free throw 1 - 1 made (4)
16:52	2 TIMME D foul drawn (6)			34 TSHIEBWE O foul personal (3 - 2)
16:52				34 TSHIEBWE O substitution out
16:52				55 WARE L substitution in
16:47	0 STRAWTHER J 2pt FG outside the paint, floating jump shot missed			
16:43				0 TOPPIN J defensive rebound (1)
16:34				0 TOPPIN J 2pt FG in the paint, layup blocked
16:34	22 WATSON A block (1)			
16:34				offensive dead ball rebound (2)
16:34	jump ball situation			



Official Basketball Play by Play - Second Half
Kentucky at Gonzaga
 11/20/22 Spokane Veterans Memorial Arena, Spokane
 Kentucky vs Gonzaga

Game Time: 4:30 PM
Game Duration: 2:06
Attendance: 12,333

Officials: David Hall, Michael Greenstein, Frank Hardie III

Game Time	GON	Score	Diff	UKY
16:21		45-35	10	0 TOPPIN J 2pt FG second chance in the paint, dunk, made (6)
16:21				2 WHEELER S assist (2)
16:18	45 BOLTON R foul drawn (1)			2 WHEELER S foul personal (3 - 3)
16:18				2 WHEELER S substitution out
16:18				12 REEVES A substitution in
15:58	45 BOLTON R 2pt FG in the paint, driving layup made (9)	47-35	12	
15:45				1 FREDRICK C 2pt FG outside the paint, jump shot missed
15:42	0 STRAWTHER J defensive rebound (11)			
15:34	45 BOLTON R turnover bad pass (2)			55 WARE L steal (1)
15:34	Timeout media			
15:26				22 WALLACE C 2pt FG from turnover in the paint, driving layup missed
15:22	2 TIMME D defensive rebound (5)			
15:22	2 TIMME D foul drawn (7)			55 WARE L foul personal (2 - 4)
15:22				55 WARE L substitution out
15:22				34 TSHIEBWE O substitution in
14:58	2 TIMME D turnover bad pass (3)			34 TSHIEBWE O steal (2)
14:51		47-37	10	12 REEVES A 2pt FG fast break from turnover outside the paint, floating jump shot made (4)
14:41	45 BOLTON R 3pt FG , jump shot missed			
14:37				34 TSHIEBWE O defensive rebound (11)
14:31				1 FREDRICK C 2pt FG in the paint, layup missed
14:28				34 TSHIEBWE O offensive rebound (12)
14:27		47-39	8	34 TSHIEBWE O 2pt FG second chance in the paint, dunk, made (18)
14:26	Timeout 30 Sec			
14:26	Timeout media			
13:57	2 TIMME D 2pt FG in the paint, layup missed			
13:54				34 TSHIEBWE O defensive rebound (13)
13:30		47-42	5	22 WALLACE C 3pt FG , jump shot made (5)
13:30				12 REEVES A assist (1)
13:18	2 TIMME D 2pt FG in the paint, driving layup made (14)	49-42	7	
13:07		49-45	4	12 REEVES A 3pt FG , jump shot made (7)
13:07				22 WALLACE C assist (2)
12:48	0 STRAWTHER J foul drawn (2)			34 TSHIEBWE O foul shooting (4 - 5)
12:48	0 STRAWTHER J free throw 1 - 2 made (11)	50-45	5	
12:48	13 SMITH M substitution out			
12:48	11 HICKMAN N substitution in			
12:48				34 TSHIEBWE O substitution out
12:48				55 WARE L substitution in
12:48	0 STRAWTHER J free throw 2 - 2 made (12)	51-45	6	
12:38				1 FREDRICK C 3pt FG , jump shot missed
12:34				0 TOPPIN J offensive rebound (2)
12:27				0 TOPPIN J 2pt FG second chance in the paint, hook shot missed
12:24	2 TIMME D defensive rebound (6)			
12:20	0 STRAWTHER J 2pt FG outside the paint, floating jump shot missed			
12:18				0 TOPPIN J defensive rebound (3)
12:00				0 TOPPIN J 3pt FG , jump shot missed
11:56				1 FREDRICK C offensive rebound (1)



Officials: David Hall, Michael Greenstein, Frank Hardie III

Game Time	GON	Score	Diff	UKY
11:53				12 REEVES A 3pt FG second chance, jump shot missed
11:50	22 WATSON A defensive rebound (7)			
11:31	2 TIMME D foul drawn (8)			55 WARE L foul shooting (3 - 6)
11:31	Timeout media			
11:31				12 REEVES A substitution out
11:31				2 WHEELER S substitution in
11:31	2 TIMME D free throw 1 - 2 made (15)	52-45	7	
11:31	2 TIMME D free throw 2 - 2 made (16)	53-45	8	
11:23		53-48	5	22 WALLACE C 3pt FG , jump shot made (8)
11:23				2 WHEELER S assist (3)
10:57	45 BOLTON R 3pt FG , jump shot made (12)	56-48	8	
10:57	2 TIMME D assist (3)			
10:42		56-50	6	0 TOPPIN J 2pt FG outside the paint, pull up jump shot made (8)
10:42				2 WHEELER S assist (4)
10:26	2 TIMME D 2pt FG in the paint, layup made (18)	58-50	8	
10:26	2 TIMME D foul drawn (9)			55 WARE L foul shooting (4 - 7)
10:26				55 WARE L substitution out
10:26				33 ONYENSO U substitution in
10:26	2 TIMME D free throw 1 - 1 made (19)	59-50	9	
10:15		59-52	7	0 TOPPIN J 2pt FG outside the paint, pull up jump shot made (10)
10:15				1 FREDRICK C assist (1)
10:03	2 TIMME D 2pt FG in the paint, driving layup made (21)	61-52	9	
09:57	11 HICKMAN N foul personal (4 - 2)			2 WHEELER S foul drawn (3)
09:57	11 HICKMAN N substitution out			
09:57	5 SALLIS H substitution in			
09:50		61-55	6	2 WHEELER S 3pt FG , jump shot made (7)
09:50				1 FREDRICK C assist (2)
09:25	5 SALLIS H 2pt FG in the paint, layup missed			
09:16	22 WATSON A offensive rebound (8)			
09:16	22 WATSON A 2pt FG second chance in the paint, dunk, made (8)	63-55	8	
09:06	0 STRAWTHER J steal (2)			2 WHEELER S turnover lost ball (1)
09:03	0 STRAWTHER J foul drawn (3)			2 WHEELER S foul personal (4 - 8)
09:03				2 WHEELER S substitution out
09:03				33 ONYENSO U substitution out
09:03				12 REEVES A substitution in
09:03				34 TSHIEBWE O substitution in
09:03	0 STRAWTHER J 1&1 free throw 1 made (13)	64-55	9	
09:03	0 STRAWTHER J 1&1 free throw 2 made (14)	65-55	10	
08:59	5 SALLIS H foul drawn (1)			22 WALLACE C foul offensive (3 - 9)
08:59				22 WALLACE C turnover offensive (2)
08:48	0 STRAWTHER J 2pt FG from turnover in the paint, layup made (16)	67-55	12	
08:48	22 WATSON A assist (2)			
08:48	0 STRAWTHER J foul drawn (4)			1 FREDRICK C foul shooting (1 - 10)
08:48	0 STRAWTHER J free throw 1 - 1 made (17)	68-55	13	
08:41		68-57	11	0 TOPPIN J 2pt FG outside the paint, pull up jump shot made (12)
08:16	45 BOLTON R 3pt FG , jump shot missed			



Official Basketball Play by Play - Second Half
Kentucky at Gonzaga
 11/20/22 Spokane Veterans Memorial Arena, Spokane
 Kentucky vs Gonzaga

Game Time: 4:30 PM
Game Duration: 2:06
Attendance: 12,333

Officials: David Hall, Michael Greenstein, Frank Hardie III

Game Time	GON	Score	Diff	UKY
08:13				34 TSHIEBWE O defensive rebound (14)
08:07				0 TOPPIN J turnover bad pass (2)
07:58	5 SALLIS H turnover dribbling violation (1)			
07:58	Timeout media			
07:50				12 REEVES A 3pt FG from turnover, jump shot missed
07:47	5 SALLIS H defensive rebound (3)			
07:43	5 SALLIS H 2pt FG fast break in the paint, driving layup made (4)	70-57	13	
07:33				1 FREDRICK C 3pt FG , step back jump shot missed
07:29	0 STRAWTHER J defensive rebound (12)			
07:16	0 STRAWTHER J turnover lost ball (4)			
07:08		70-59	11	22 WALLACE C 2pt FG from turnover outside the paint, pull up jump shot made (10)
06:56	2 TIMME D foul drawn (10)			0 TOPPIN J foul personal (2 - 11)
06:56	2 TIMME D free throw 1 - 2 missed			
06:56	offensive dead ball rebound (1)			
06:56				34 TSHIEBWE O substitution out
06:56				55 WARE L substitution in
06:56	2 TIMME D free throw 2 - 2 made (22)	71-59	12	
06:48		71-61	10	22 WALLACE C 2pt FG outside the paint, floating jump shot made (12)
06:24	45 BOLTON R 2pt FG in the paint, driving layup made (14)	73-61	12	
06:15	5 SALLIS H foul shooting (2 - 3)			22 WALLACE C foul drawn (2)
06:15		73-62	11	22 WALLACE C free throw 1 - 2 made (13)
06:15		73-63	10	22 WALLACE C free throw 2 - 2 made (14)
05:46	45 BOLTON R 2pt FG in the paint, driving layup missed			
05:43	45 BOLTON R offensive rebound (1)			
05:42	45 BOLTON R 2pt FG second chance in the paint, layup missed			
05:39				55 WARE L defensive rebound (1)
05:37				0 TOPPIN J 3pt FG , jump shot missed
05:34				1 FREDRICK C offensive rebound (2)
05:32				12 REEVES A 3pt FG second chance, jump shot missed
05:29	0 STRAWTHER J defensive rebound (13)			
05:02	0 STRAWTHER J turnover lost ball (5)			22 WALLACE C steal (4)
04:57	22 WATSON A foul shooting (2 - 4)			0 TOPPIN J foul drawn (2)
04:57				0 TOPPIN J free throw 1 - 2 missed
04:57				offensive dead ball rebound (3)
04:57	5 SALLIS H substitution out			
04:57	11 HICKMAN N substitution in			
04:57				12 REEVES A substitution out
04:57				55 WARE L substitution out
04:57				2 WHEELER S substitution in
04:57				34 TSHIEBWE O substitution in
04:57				0 TOPPIN J free throw 2 - 2 missed
04:56	0 STRAWTHER J defensive rebound (14)			
04:42	0 STRAWTHER J 3pt FG , jump shot made (20)	76-63	13	
04:42	11 HICKMAN N assist (2)			
04:32		76-65	11	0 TOPPIN J 2pt FG outside the paint, pull up jump shot made (14)
04:02	22 WATSON A 3pt FG , jump shot missed			



Official Basketball Play by Play - Second Half
Kentucky at Gonzaga
 11/20/22 Spokane Veterans Memorial Arena, Spokane
 Kentucky vs Gonzaga

Game Time: 4:30 PM
Game Duration: 2:06
Attendance: 12,333

Officials: David Hall, Michael Greenstein, Frank Hardie III

Game Time	GON	Score	Diff	UKY
03:58				22 WALLACE C defensive rebound (2)
03:53		76-67	9	0 TOPPIN J 2pt FG outside the paint, pull up jump shot made (16)
03:53				1 FREDRICK C assist (3)
03:27	45 BOLTON R foul drawn (2)			22 WALLACE C foul personal (4 - 12)
03:27	Timeout media			
03:27				2 WHEELER S substitution out
03:27				12 REEVES A substitution in
03:27	45 BOLTON R free throw 1 - 2 made (15)	77-67	10	
03:27	45 BOLTON R free throw 2 - 2 made (16)	78-67	11	
03:19				22 WALLACE C 2pt FG in the paint, floating jump shot missed
03:14				34 TSHIEBWE O offensive rebound (15)
03:13		78-69	9	34 TSHIEBWE O 2pt FG second chance in the paint, dunk, made (20)
02:47	2 TIMME D foul offensive (2 - 5)			0 TOPPIN J foul drawn (3)
02:47	2 TIMME D turnover offensive (4)			
02:39				22 WALLACE C turnover bad pass (3)
02:23	45 BOLTON R 3pt FG from turnover, pull up jump shot made (19)	81-69	12	
02:14				Timeout 30 Sec
02:04				34 TSHIEBWE O 2pt FG outside the paint, jump shot missed
02:00	22 WATSON A defensive rebound (9)			
01:37	22 WATSON A 2pt FG outside the paint, floating jump shot missed			
01:35	2 TIMME D offensive rebound (7)			
01:27	45 BOLTON R foul drawn (3)			12 REEVES A foul personal (1 - 13)
01:27	45 BOLTON R free throw 1 - 2 made (20)	82-69	13	
01:27	45 BOLTON R free throw 2 - 2 made (21)	83-69	14	
01:17	jump ball situation			
01:17	11 HICKMAN N steal (1)			1 FREDRICK C turnover lost ball (2)
00:52	22 WATSON A 2pt FG from turnover in the paint, driving layup made (10)	85-69	16	
00:41				34 TSHIEBWE O 2pt FG outside the paint, hook shot missed
00:37	22 WATSON A defensive rebound (10)			
00:15	45 BOLTON R 3pt FG , pull up jump shot made (24)	88-69	19	
00:08		88-72	16	12 REEVES A 3pt FG , pull up jump shot made (10)
END OF GAME				
GON 88-72 UKY				



Officials: David Hall, Michael Greenstein, Frank Hardie III

Kentucky - 47

NO.	Name	F	Min	FG	3P	FT	Rebounds			Fouls		TP	AS	TO	ST	Blocks		+/-
				M-A	M-A	M-A	OR	DR	TOT	PF	FD					BS	BA	
0	Jacob Toppin	F	20:00	6-12	0-3	0-2	1	2	3	1	2	12	0	1	0	0	1	0
34	Oscar Tshiebwe	F	12:46	3-5	0-0	0-0	3	5	8	3	0	6	0	0	1	0	0	2
1	CJ Fredrick	G	20:00	1-5	1-3	0-0	2	0	2	1	0	3	3	1	0	0	0	0
2	Sahvir Wheeler	G	07:40	2-3	1-2	1-1	0	0	0	2	2	6	4	1	0	0	0	5
22	Cason Wallace	G	20:00	4-6	2-2	2-2	0	1	1	2	1	12	1	2	2	0	0	0
24	Chris Livingston		00:00	0-0	0-0	0-0	0	0	0	0	0	0	0	0	0	0	0	0
55	Lance Ware		05:51	0-0	0-0	0-0	0	1	1	3	0	0	0	0	1	0	0	-2
12	Antonio Reeves		12:20	3-6	2-5	0-0	0	0	0	1	0	8	1	0	0	0	0	-5
33	Ugonna Onyenso		01:23	0-0	0-0	0-0	0	0	0	0	0	0	0	0	0	0	0	0
Team							0	0	0			0		0				
Totals				19-37	6-15	3-5	6	9	15	13	5	47	9	5	4	0	1	0

Shooting By Period		
2 nd FG%	19-37	51.4%
3PT%	6-15	40.0%
FT%	3-5	60%
GM FG%	19-37	51.4%
3PT%	6-15	40.0%
FT%	3-5	60.0%

Dead Ball Rebounds: 2, 0

Technical Fouls::NONE

Gonzaga - 47

NO.	Name	F	Min	FG	3P	FT	Rebounds			Fouls		TP	AS	TO	ST	Blocks		+/-
				M-A	M-A	M-A	OR	DR	TOT	PF	FD					BS	BA	
2	Drew Timme	F	20:00	4-5	0-0	4-6	1	2	3	1	6	12	1	3	0	0	0	0
22	Anton Watson	F	20:00	2-5	0-2	0-0	1	4	5	1	0	4	1	0	0	1	0	0
0	Julian Strawther	G	20:00	2-4	1-1	5-5	0	5	5	0	3	10	0	2	1	0	0	0
11	Nolan Hickman	G	10:46	0-0	0-0	0-0	0	0	0	2	0	0	1	1	1	0	0	7
45	Rasir Bolton	G	20:00	6-10	3-5	4-4	1	0	1	0	3	19	0	1	0	0	0	0
33	Ben Gregg		00:00	0-0	0-0	0-0	0	0	0	0	0	0	0	0	0	0	0	0
13	Malachi Smith		04:14	0-0	0-0	0-0	0	0	0	0	0	0	0	0	0	0	0	-8
5	Hunter Sallis		05:00	1-2	0-0	0-0	0	1	1	1	1	2	0	1	0	0	0	1
Team							0	0	0			0		0				
Totals				15-26	4-8	13-15	3	12	15	5	13	47	3	8	2	1	0	0

Shooting By Period		
2 nd FG%	15-26	57.7%
3PT%	4-8	50.0%
FT%	13-15	86.7%
GM FG%	15-26	57.7%
3PT%	4-8	50.0%
FT%	13-15	86.7%

Dead Ball Rebounds: 1, 0

Technical Fouls::NONE

	UKY	GON
Biggest lead	0 (1 st 20:00)	19 (2 nd 0:15)
Best Scoring Run	7(2 nd 13:30)	10(2 nd 0:15)
Lead Changes	0	
Times Tied	0	
Time with Lead	00:00	19:44

Points from	UKY	GON
Turnovers	9	10
Paint	10	22
Second Chance	8	4
Fast Breaks	2	4
Bench	8	2

	Period by Period Scoring		
	1st	2nd	TOT
UKY	25	47	72
GON	41	47	88



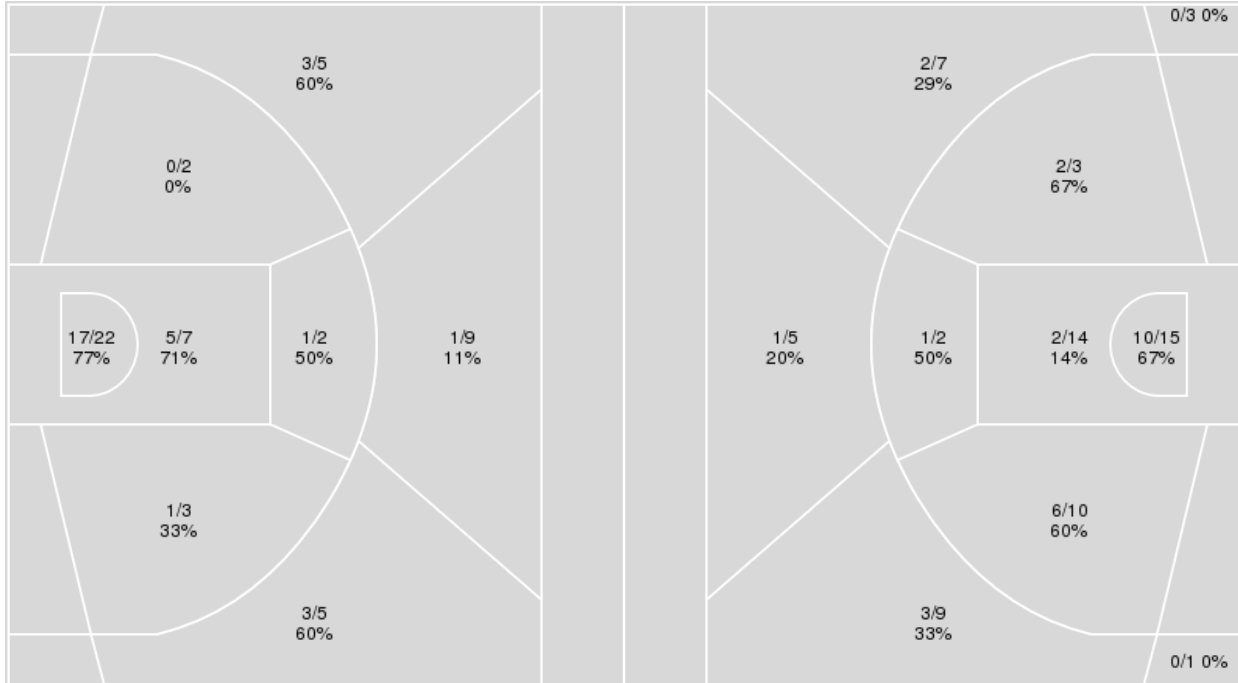
Officials: David Hall, Michael Greenstein, Frank Hardie III

{ Players => All; } FG Types => All; Results => All;

{ Players => All; } FG Types => All; Results => All;

Gonzaga

Kentucky



Gonzaga	M/A	%
Field Goals	31/55	56
2 Points	24/36	67
3 Points	7/19	37
Free Throws	19/21	90

Kentucky	M/A	%
Field Goals	27/69	39
2 Points	21/44	48
3 Points	6/25	24
Free Throws	12/16	75



Kentucky at Gonzaga

11/20/22 Spokane Veterans Memorial Arena, Spokane
Kentucky vs Gonzaga

Game Time: 4:30 PM
Game Duration: 2:06
Attendance: 12,333

Officials: David Hall, Michael Greenstein, Frank Hardie III

Kentucky

No	Name	Mins		Score		Points Diff		Points per Min		Assists		Rebounds		Steals		Turnovers	
		On	Off	On	Off	On	Off	On	Off	On	Off	On	Off	On	Off	On	Off
0	Jacob Toppin	35:58	04:02	69 - 76	3 - 12	-7	-9	1.92	0.74	11	0	28	1	9	1	9	2
1	CJ Fredrick	35:42	04:18	63 - 77	9 - 11	-14	-2	1.76	2.09	11	0	25	4	8	2	11	0
2	Sahvir Wheeler	17:14	22:46	37 - 40	35 - 48	-3	-13	2.15	1.54	8	3	10	19	5	5	1	10
4	Daimion Collins	04:02	35:58	3 - 12	69 - 76	-9	-7	0.74	1.92	0	11	1	28	1	9	2	9
12	Antonio Reeves	23:58	16:02	40 - 51	32 - 37	-11	-5	1.67	2.00	3	8	20	9	7	3	7	4
22	Cason Wallace	34:53	05:07	65 - 80	7 - 8	-15	-1	1.86	1.37	11	0	23	6	8	2	8	3
24	Chris Livingston	08:13	31:47	11 - 16	61 - 72	-5	-11	1.34	1.92	0	11	9	20	2	8	6	5
33	Ugonna Onyenso	01:23	38:37	5 - 5	67 - 83	0	-16	3.61	1.74	2	9	0	29	0	10	1	10
34	Oscar Tshiebwe	28:34	11:26	52 - 61	20 - 27	-9	-7	1.82	1.75	5	6	21	8	7	3	8	3
55	Lance Ware	10:03	29:57	15 - 22	57 - 66	-7	-9	1.49	1.90	4	7	8	21	3	7	2	9

Gonzaga

No	Name	Mins		Score		Points Diff		Points per Min		Assists		Rebounds		Steals		Turnovers	
		On	Off	On	Off	On	Off	On	Off	On	Off	On	Off	On	Off	On	Off
0	Julian Strawther	39:51	00:09	88 - 72	0 - 0	16	0	2.21	0.00	8	0	38	1	7	0	18	0
2	Drew Timme	35:55	04:05	80 - 68	8 - 4	12	4	2.23	1.96	8	0	35	4	4	3	17	1
5	Hunter Sallis	09:47	30:13	16 - 16	72 - 56	0	16	1.64	2.38	1	7	12	27	3	4	7	11
11	Nolan Hickman	28:27	11:33	71 - 46	17 - 26	25	-9	2.50	1.47	7	1	29	10	4	3	10	8
13	Malachi Smith	11:00	29:00	18 - 23	70 - 49	-5	21	1.64	2.41	1	7	8	31	2	5	6	12
15	Efton Reid	02:25	37:35	4 - 3	84 - 69	1	15	1.66	2.24	0	8	3	36	0	7	2	16
22	Anton Watson	37:35	02:25	84 - 69	4 - 3	15	1	2.24	1.66	8	0	36	3	7	0	16	2
33	Ben Gregg	04:05	35:55	8 - 4	80 - 68	4	12	1.96	2.23	0	8	4	35	3	4	1	17
45	Rasir Bolton	30:55	09:05	71 - 59	17 - 13	12	4	2.30	1.87	7	1	30	9	5	2	13	5

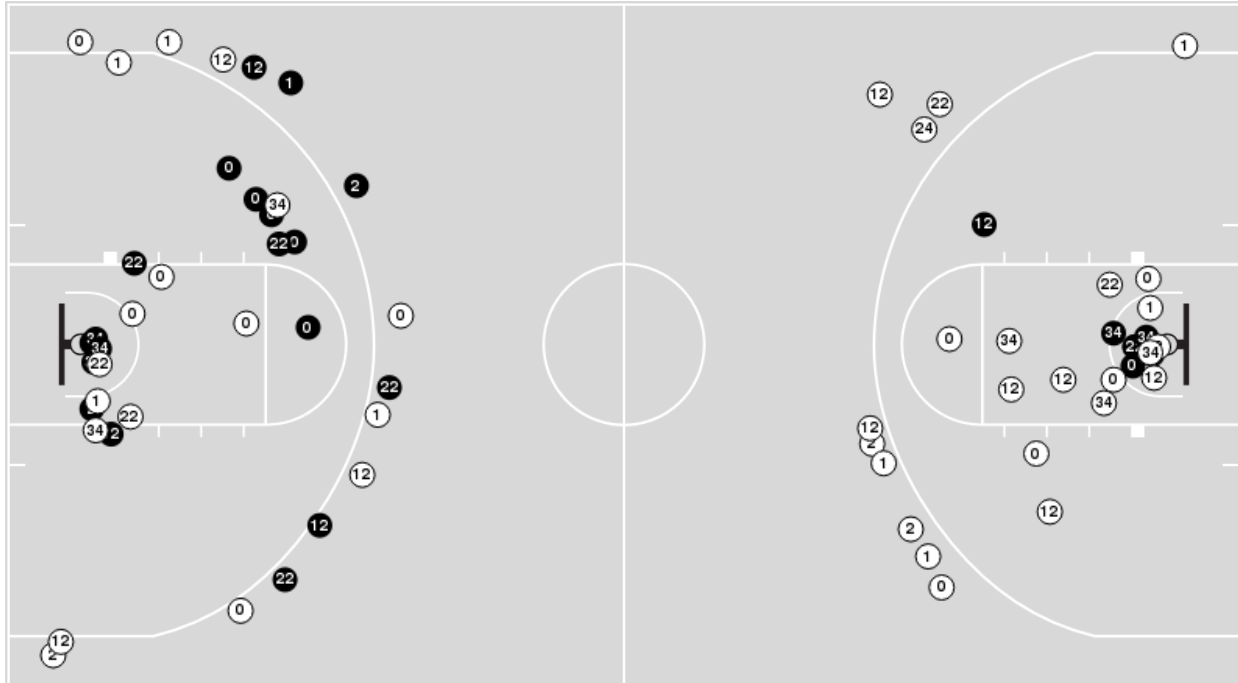


Officials: David Hall, Michael Greenstein, Frank Hardie III

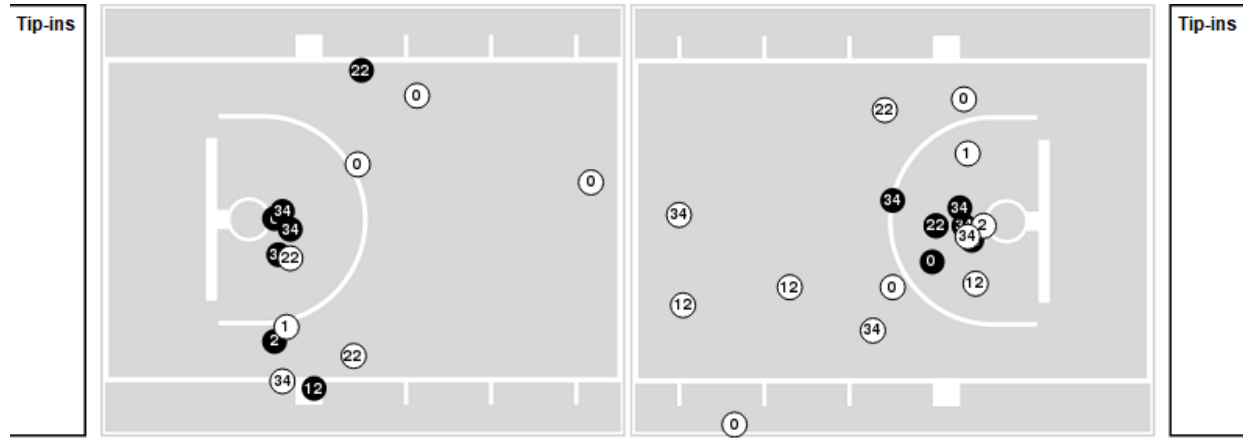
Players => AllFG Types=>AllResults=>All

Kentucky

All Field Goals



Blow Up Chart



● Made ○ Missed N - Player Number

Kentucky	M/A	%
Field Goals	27/69	39
2 Points	21/44	48
3 Points	6/25	24
Free Throws	12/16	75

Kentucky	M/A	%
Points in the Paint	24 (12 / 29)	41
Fast Break Points	5 (4/5)	80
Second Chance Points	12 (7/13)	54
Effective FG%	43	

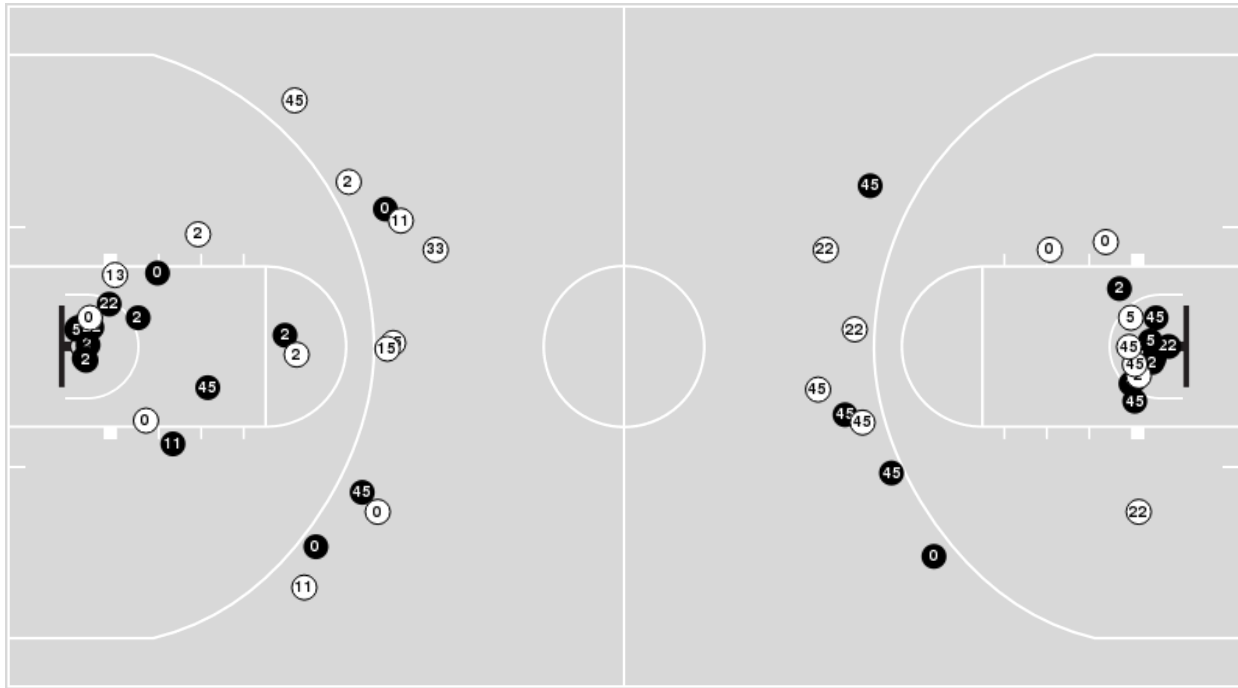


Officials: David Hall, Michael Greenstein, Frank Hardie III

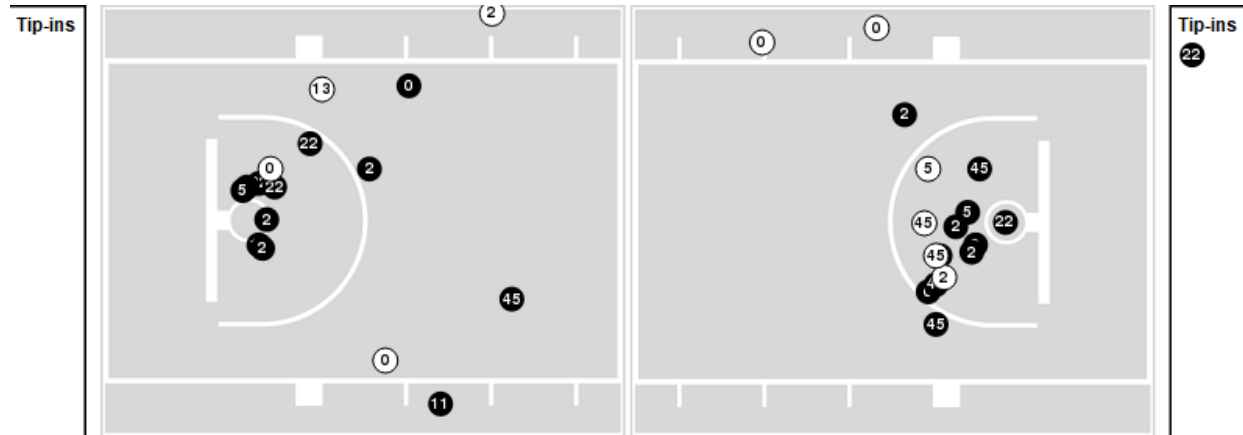
Players => AllFG Types=>AllResults=>All

Gonzaga

All Field Goals



Blow Up Chart



● Made ○ Missed N - Player Number

Gonzaga	M/A	%
Field Goals	31/55	56
2 Points	24/36	67
3 Points	7/19	37
Free Throws	19/21	90

Gonzaga	M/A	%
Points in the Paint	44 (22 / 29)	76
Fast Break Points	6 (4/4)	100
Second Chance Points	11 (7/9)	78
Effective FG%	63	



Officials: David Hall, Michael Greenstein, Frank Hardie III

Kentucky

Lineup	Quarter On	Time On	Quarter Off	Time Off	Time on Court	Score	Score Diff	Reb	Stl	Tov	Ass	PPP
0- Toppin J/ 1- Fredrick C/ 2- Wheeler S/ 22- Wallace C/ 34- Tshiebwe O/	1	20:00	1	16:29	03:31	2-10	-8	0	2	0	1	0.2857
0- Toppin J/ 1- Fredrick C/ 2- Wheeler S/ 22- Wallace C/ 55- Ware L/	1	16:29	1	16:21	00:08	2-0	2	0	0	0	0	2.2727
0- Toppin J/ 1- Fredrick C/ 12- Reeves A/ 22- Wallace C/ 55- Ware L/	1	16:21	1	14:40	01:41	2-2	0	1	1	0	1	1.0000
1- Fredrick C/ 4- Collins D/ 12- Reeves A/ 22- Wallace C/ 55- Ware L/	1	14:40	1	13:41	00:59	0-2	-2	0	0	0	0	0.0000
2- Wheeler S/ 4- Collins D/ 12- Reeves A/ 22- Wallace C/ 34- Tshiebwe O/	1	13:41	1	12:02	01:39	3-5	-2	0	1	0	0	1.2295
0- Toppin J/ 2- Wheeler S/ 12- Reeves A/ 24- Livingston C/ 34- Tshiebwe O/	1	12:02	1	10:35	01:27	3-2	1	2	1	0	0	0.7979
0- Toppin J/ 2- Wheeler S/ 12- Reeves A/ 22- Wallace C/ 34- Tshiebwe O/	1	10:35	1	09:23	01:12	3-4	-1	2	0	0	0	2.0833
0- Toppin J/ 1- Fredrick C/ 2- Wheeler S/ 22- Wallace C/ 34- Tshiebwe O/	1	09:23	1	07:46	01:37	0-0	0	1	0	0	0	0.0000
0- Toppin J/ 1- Fredrick C/ 12- Reeves A/ 22- Wallace C/ 34- Tshiebwe O/	1	07:46	1	06:46	01:00	2-2	0	1	0	0	0	1.0000
0- Toppin J/ 1- Fredrick C/ 22- Wallace C/ 24- Livingston C/ 34- Tshiebwe O/	1	06:46	1	04:26	02:20	4-6	-2	2	0	2	0	0.8000
1- Fredrick C/ 4- Collins D/ 22- Wallace C/ 24- Livingston C/ 55- Ware L/	1	04:26	1	03:40	00:46	0-2	-2	1	0	1	0	0.0000
1- Fredrick C/ 4- Collins D/ 12- Reeves A/ 24- Livingston C/ 55- Ware L/	1	03:40	1	03:02	00:38	0-3	-3	0	0	1	0	0.0000
0- Toppin J/ 1- Fredrick C/ 12- Reeves A/ 24- Livingston C/ 34- Tshiebwe O/	1	03:02	2	20:00	03:02	4-3	1	4	1	2	0	0.7519
0- Toppin J/ 1- Fredrick C/ 2- Wheeler S/ 22- Wallace C/ 34- Tshiebwe O/	2	20:00	2	16:52	03:08	8-4	4	3	1	0	1	1.4706
0- Toppin J/ 1- Fredrick C/ 2- Wheeler S/ 22- Wallace C/ 55- Ware L/	2	16:52	2	16:18	00:34	2-0	2	1	0	0	1	1.0000
0- Toppin J/ 1- Fredrick C/ 12- Reeves A/ 22- Wallace C/ 55- Ware L/	2	16:18	2	15:22	00:56	0-2	-2	0	1	0	0	0.0000
0- Toppin J/ 1- Fredrick C/ 12- Reeves A/ 22- Wallace C/ 34- Tshiebwe O/	2	15:22	2	12:48	02:34	10-3	7	3	1	0	2	2.5000
0- Toppin J/ 1- Fredrick C/ 12- Reeves A/ 22- Wallace C/ 55- Ware L/	2	12:48	2	11:31	01:17	0-1	-1	3	0	0	0	0.0000
0- Toppin J/ 1- Fredrick C/ 2- Wheeler S/ 22- Wallace C/ 55- Ware L/	2	11:31	2	10:26	01:05	5-7	-2	0	0	0	2	2.5000
0- Toppin J/ 1- Fredrick C/ 2- Wheeler S/ 22- Wallace C/ 33- Onyenso U/	2	10:26	2	09:03	01:23	5-5	0	0	0	1	2	1.6667
0- Toppin J/ 1- Fredrick C/ 12- Reeves A/ 22- Wallace C/ 34- Tshiebwe O/	2	09:03	2	06:56	02:07	4-7	-3	1	0	2	0	0.6667
0- Toppin J/ 1- Fredrick C/ 12- Reeves A/ 22- Wallace C/ 55- Ware L/	2	06:56	2	04:57	01:59	4-3	1	2	1	0	0	1.2048
0- Toppin J/ 1- Fredrick C/ 2- Wheeler S/ 22- Wallace C/ 34- Tshiebwe O/	2	04:57	2	03:27	01:30	4-3	1	1	0	0	1	1.6393
0- Toppin J/ 1- Fredrick C/ 12- Reeves A/ 22- Wallace C/ 34- Tshiebwe O/	2	03:27	2	00:00	03:27	5-12	-7	1	0	2	0	0.8333



Official Basketball Rotations Summary - Final
Kentucky at Gonzaga
 11/20/22 Spokane Veterans Memorial Arena, Spokane
 Kentucky vs Gonzaga

Game Time: 4:30 PM
Game Duration: 2:06
Attendance: 12,333

Officials: David Hall, Michael Greenstein, Frank Hardie III

Gonzaga

Lineup	Quarter On	Time On	Quarter Off	Time Off	Time on Court	Score	Score Diff	Reb	Stl	Tov	Ass	PPP
0- Strawther J/ 2- Timme D/ 11- Hickman N/ 22- Watson A/ 45- Bolton R/	1	20:00	1	13:41	06:19	14-6	8	10	0	4	4	1.2727
0- Strawther J/ 2- Timme D/ 11- Hickman N/ 13- Smith M/ 22- Watson A/	1	13:41	1	11:11	02:30	7-4	3	3	0	1	1	1.4000
0- Strawther J/ 2- Timme D/ 5- Sallis H/ 13- Smith M/ 22- Watson A/	1	11:11	1	10:35	00:36	0-2	-2	1	0	1	0	0.0000
0- Strawther J/ 2- Timme D/ 5- Sallis H/ 11- Hickman N/ 15- Reid E/	1	10:35	1	08:10	02:25	4-3	1	3	0	2	0	1.0000
0- Strawther J/ 2- Timme D/ 5- Sallis H/ 11- Hickman N/ 22- Watson A/	1	08:10	1	07:46	00:24	0-0	0	1	0	0	0	0.0000
0- Strawther J/ 2- Timme D/ 11- Hickman N/ 22- Watson A/ 45- Bolton R/	1	07:46	1	04:26	03:20	8-6	2	2	2	0	0	1.1429
0- Strawther J/ 11- Hickman N/ 22- Watson A/ 33- Gregg B/ 45- Bolton R/	1	04:26	1	03:40	00:46	2-0	2	2	1	0	0	1.0638
0- Strawther J/ 11- Hickman N/ 13- Smith M/ 22- Watson A/ 33- Gregg B/	1	03:40	1	01:43	01:57	6-4	2	0	0	0	0	1.5957
0- Strawther J/ 5- Sallis H/ 13- Smith M/ 22- Watson A/ 33- Gregg B/	1	01:43	1	00:30	01:13	0-0	0	1	2	1	0	0.0000
0- Strawther J/ 2- Timme D/ 13- Smith M/ 22- Watson A/ 45- Bolton R/	1	00:30	1	00:08	00:21	0-0	0	0	0	1	0	0.0000
5- Sallis H/ 13- Smith M/ 22- Watson A/ 33- Gregg B/ 45- Bolton R/	1	00:08	2	20:00	00:09	0-0	0	1	0	0	0	0.0000
0- Strawther J/ 2- Timme D/ 11- Hickman N/ 22- Watson A/ 45- Bolton R/	2	20:00	2	17:02	02:58	4-7	-3	2	0	2	0	0.7353
0- Strawther J/ 2- Timme D/ 13- Smith M/ 22- Watson A/ 45- Bolton R/	2	17:02	2	12:48	04:14	5-13	-8	2	0	2	0	0.6720
0- Strawther J/ 2- Timme D/ 11- Hickman N/ 22- Watson A/ 45- Bolton R/	2	12:48	2	09:57	02:51	11-7	4	2	0	0	1	1.9097
0- Strawther J/ 2- Timme D/ 5- Sallis H/ 22- Watson A/ 45- Bolton R/	2	09:57	2	04:57	05:00	12-11	1	5	1	3	1	1.0714
0- Strawther J/ 2- Timme D/ 11- Hickman N/ 22- Watson A/ 45- Bolton R/	2	04:57	2	00:00	04:57	15-9	6	4	1	1	1	1.9330



Officials: David Hall, Michael Greenstein, Frank Hardie III

Kentucky

Lineup	Time	Score	Score Diff	Pts/Min	Reb	Stl	Tov	Ass	PPP
0- Toppin J/ 1- Fredrick C/ 2- Wheeler S/ 22- Wallace C/ 34- Tshiebwe O/	09:46	14-17	-3	1.4334	5	3	0	3	0.7830
0- Toppin J/ 1- Fredrick C/ 12- Reeves A/ 22- Wallace C/ 34- Tshiebwe O/	09:08	21-24	-3	2.2993	6	1	4	2	1.1667
0- Toppin J/ 1- Fredrick C/ 12- Reeves A/ 22- Wallace C/ 55- Ware L/	05:53	6-8	-2	1.0198	6	3	0	1	0.6438
0- Toppin J/ 1- Fredrick C/ 12- Reeves A/ 24- Livingston C/ 34- Tshiebwe O/	03:02	4-3	1	1.3187	4	1	2	0	0.7519
0- Toppin J/ 1- Fredrick C/ 22- Wallace C/ 24- Livingston C/ 34- Tshiebwe O/	02:20	4-6	-2	1.7143	2	0	2	0	0.8000
0- Toppin J/ 1- Fredrick C/ 2- Wheeler S/ 22- Wallace C/ 55- Ware L/	01:47	9-7	2	5.0467	1	0	0	3	1.8443
2- Wheeler S/ 4- Collins D/ 12- Reeves A/ 22- Wallace C/ 34- Tshiebwe O/	01:39	3-5	-2	1.8182	0	1	0	0	1.2295
0- Toppin J/ 2- Wheeler S/ 12- Reeves A/ 24- Livingston C/ 34- Tshiebwe O/	01:27	3-2	1	2.0690	2	1	0	0	0.7979
0- Toppin J/ 1- Fredrick C/ 2- Wheeler S/ 22- Wallace C/ 33- Onyenso U/	01:23	5-5	0	3.6145	0	0	1	2	1.6667
0- Toppin J/ 2- Wheeler S/ 12- Reeves A/ 22- Wallace C/ 34- Tshiebwe O/	01:12	3-4	-1	2.5000	2	0	0	0	2.0833
1- Fredrick C/ 4- Collins D/ 12- Reeves A/ 22- Wallace C/ 55- Ware L/	00:59	0-2	-2	0.0000	0	0	0	0	0.0000
1- Fredrick C/ 4- Collins D/ 22- Wallace C/ 24- Livingston C/ 55- Ware L/	00:46	0-2	-2	0.0000	1	0	1	0	0.0000
1- Fredrick C/ 4- Collins D/ 12- Reeves A/ 24- Livingston C/ 55- Ware L/	00:38	0-3	-3	0.0000	0	0	1	0	0.0000



Official Basketball Line Up Analysis - Final
Kentucky at Gonzaga
 11/20/22 Spokane Veterans Memorial Arena, Spokane
 Kentucky vs Gonzaga

Game Time: 4:30 PM
Game Duration: 2:06
Attendance: 12,333

Officials: David Hall, Michael Greenstein, Frank Hardie III

Gonzaga

Lineup	Time	Score	Score Diff	Pts/Min	Reb	Stl	Tov	Ass	PPP
0- Strawther J/ 2- Timme D/ 11- Hickman N/ 22- Watson A/ 45- Bolton R/	20:25	52-35	17	2.5469	20	3	7	6	1.4069
0- Strawther J/ 2- Timme D/ 5- Sallis H/ 22- Watson A/ 45- Bolton R/	05:00	12-11	1	2.4000	5	1	3	1	1.0714
0- Strawther J/ 2- Timme D/ 13- Smith M/ 22- Watson A/ 45- Bolton R/	04:35	5-13	-8	1.0909	2	0	3	0	0.5924
0- Strawther J/ 2- Timme D/ 11- Hickman N/ 13- Smith M/ 22- Watson A/	02:30	7-4	3	2.8000	3	0	1	1	1.4000
0- Strawther J/ 2- Timme D/ 5- Sallis H/ 11- Hickman N/ 15- Reid E/	02:25	4-3	1	1.6552	3	0	2	0	1.0000
0- Strawther J/ 11- Hickman N/ 13- Smith M/ 22- Watson A/ 33- Gregg B/	01:57	6-4	2	3.0769	0	0	0	0	1.5957
0- Strawther J/ 5- Sallis H/ 13- Smith M/ 22- Watson A/ 33- Gregg B/	01:13	0-0	0	0.0000	1	2	1	0	0.0000
0- Strawther J/ 11- Hickman N/ 22- Watson A/ 33- Gregg B/ 45- Bolton R/	00:46	2-0	2	2.6087	2	1	0	0	1.0638
0- Strawther J/ 2- Timme D/ 5- Sallis H/ 13- Smith M/ 22- Watson A/	00:36	0-2	-2	0.0000	1	0	1	0	0.0000
0- Strawther J/ 2- Timme D/ 5- Sallis H/ 11- Hickman N/ 22- Watson A/	00:24	0-0	0	0.0000	1	0	0	0	0.0000
5- Sallis H/ 13- Smith M/ 22- Watson A/ 33- Gregg B/ 45- Bolton R/	00:09	0-0	0	0.0000	1	0	0	0	0.0000