

UNIVERSITY OF KENTUCKY

TALES FROM THE TAPE

How to scout while watching
game film

RACHEL LAWSON



Presentation Objectives

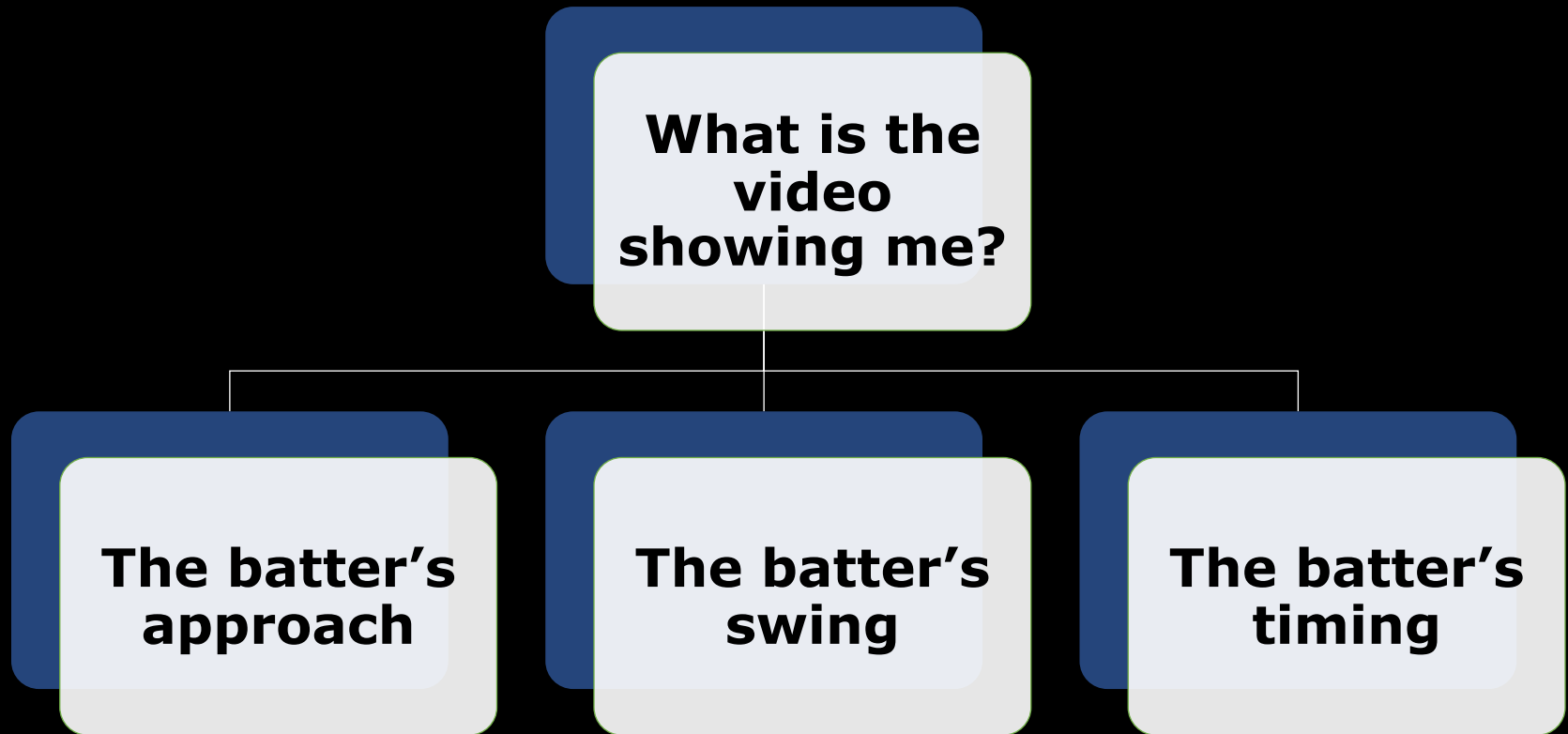
**Highlight clues taken from
video analysis to develop a
batter's profile**

**Show how pitching charts
can be utilized as a tool for
decision making**

Video examples

Q&A

The Batter's Profile



The Batter's Approach

What pitch are they hunting?

Are they a count hitter?

Are they a situational hitter?

Do they have a two-strike approach?

The Batter's Swing

The batter's set-up

- **Positioning in the box**
- **Stance**

Stride direction

Barrel path

Contact point

Posture through contact

The Batter's Timing

**When does the
batter start?**

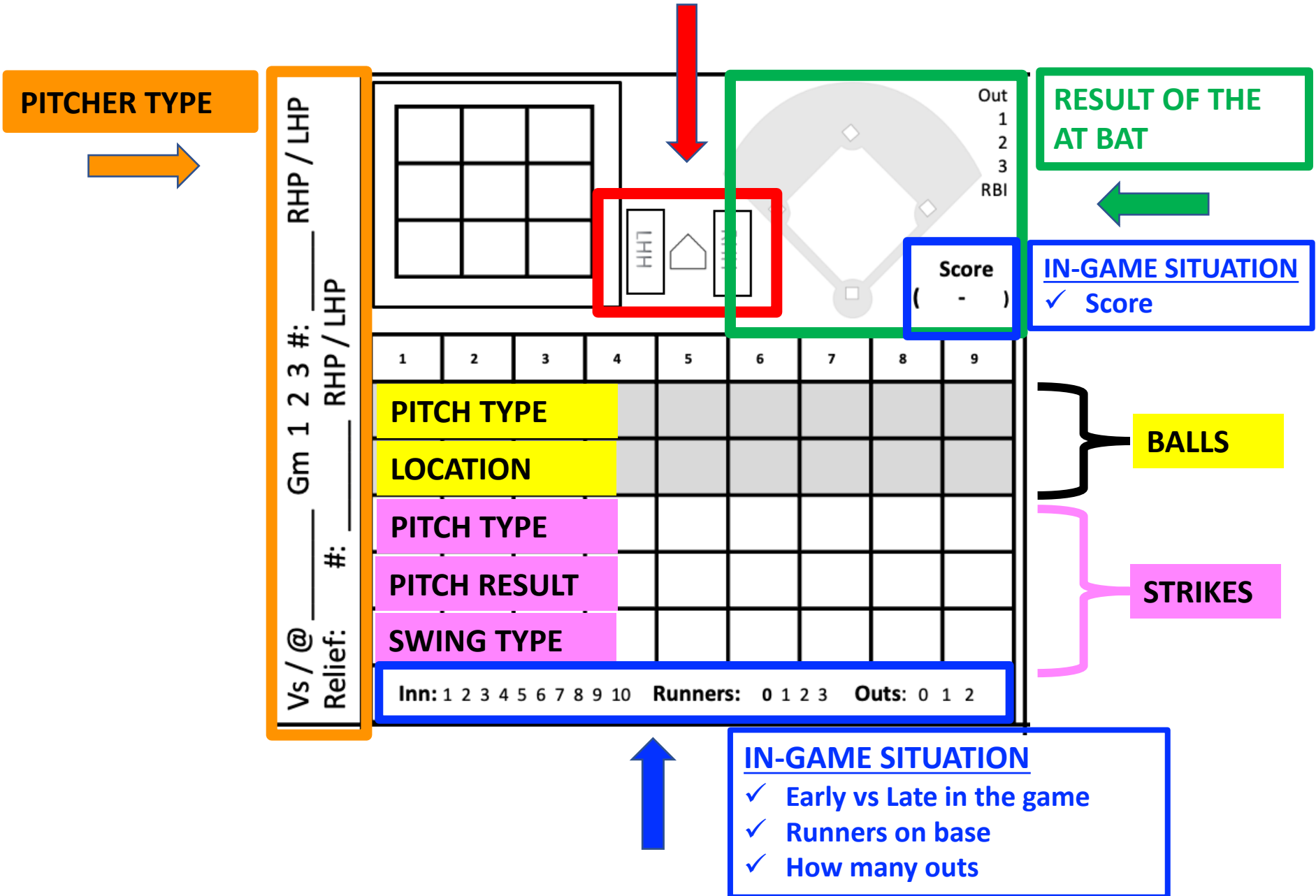
**When is the
timing of barrel
release?**

Scouting Tools



[illegible]

One Plate Appearance



Lawson's Shorthand for Swing Types

Shorthand	Batter's Swing Type
2K	2-strike approach
Battle	Tough out with 2K's
Belly	Rotates & leaves barrel behind
Bounce	Approach is to hit ball on the ground
Closed	Closed stride
Deep	Deep contact point
Dive	Posture dives toward the plate
Early	Starts their stride early
Fast thru	Slapper is fast thru the box
Flat	Flat bat path
Hack	Took a hack
Hands up	Hits high pitch
Inside out	Inside out swing
J	Jam

Lawson's Shorthand for Swing Types

Shorthand	Batter's Swing Type
Late	Starts their stride late
Lateral	Lateral posture
Learns	Adjusts to pitch calling from AB to AB
Low ball	Adjusted with legs to hit low pitch
Open	Stride is open at toe touch
Out front	Contact point is out front
Pulls	Dominant bottom hand to contact
Sees	The batter has recognition of the pitch
Sits	Majority of weight is on back side
T	Automatic take
Tall	Tall posture
Thru	Batter swings thru the pitch (early barrel release)
Tuck	Extreme elbow in front of body
Wave	Weak bottom hand pull to outside pitch

At Bat #1

Vs / @ _____ Gm 1 2 3 #: _____ RHP / LHP _____
 Relief: # _____ RHP / LHP _____

RHP / LHP RHP

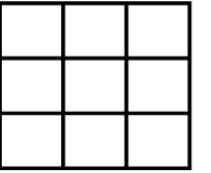
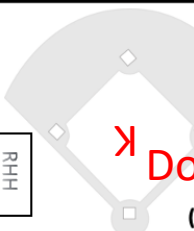
<div style="display: flex; justify-content: space-around; align-items: center;"> <div style="border: 1px solid black; padding: 5px;"> <table border="1" style="width: 100px; height: 100px; border-collapse: collapse;"> <tr><td> </td><td> </td><td> </td></tr> <tr><td> </td><td> </td><td> </td></tr> <tr><td> </td><td> </td><td> </td></tr> </table> </div> <div style="text-align: center;"> <p style="color: red; font-weight: bold;">Fast Thru</p> <p style="color: red; font-weight: bold;">L6</p> <p style="color: red; font-weight: bold;">Hi</p> <p style="color: red; font-weight: bold;">Stop @</p> </div> <div style="text-align: right;"> <p>Out 1 2 3 RBI</p> <p>Score (-)</p> </div> </div>																		
1	2				5	6	7	8	9									
	BD					Contact /												
	NP					Deep												
BD		Fo	Ri	Fo														
T		F	F	F														
		Extend		Extend														
Inn: 1	2	3	4	5	6	7	8	9	10									
Runners: 0	2	3																
Outs: 0									2									

1
2
3



At Bat #2

Vs / @ _____ Gm 1 2 3 #: _____ RHP / LHP _____
 Relief: # _____

										Tall LHH RHH				Out 1 2 3 RBI
1	2	3	4	5	6	7	8	9						
	▲													
	O													
BD		BD												
T		Thru												
Inn: 1 3 5 6 7 8 9 10										Runners: 0	2	3	Outs: 1 2	



6 Georgia 0 TOP 3
 20 Kentucky 0
 3-2 0 Outs Pitches 53

Vs / @ _____ Gm 1 2 3 #: _____ RHP / LHP _____

Relief: # _____

Running Play

5-3 Do Bounce

Out 1
2
3
 RBI

Score 0 - 0

RHP / LHP

Tall

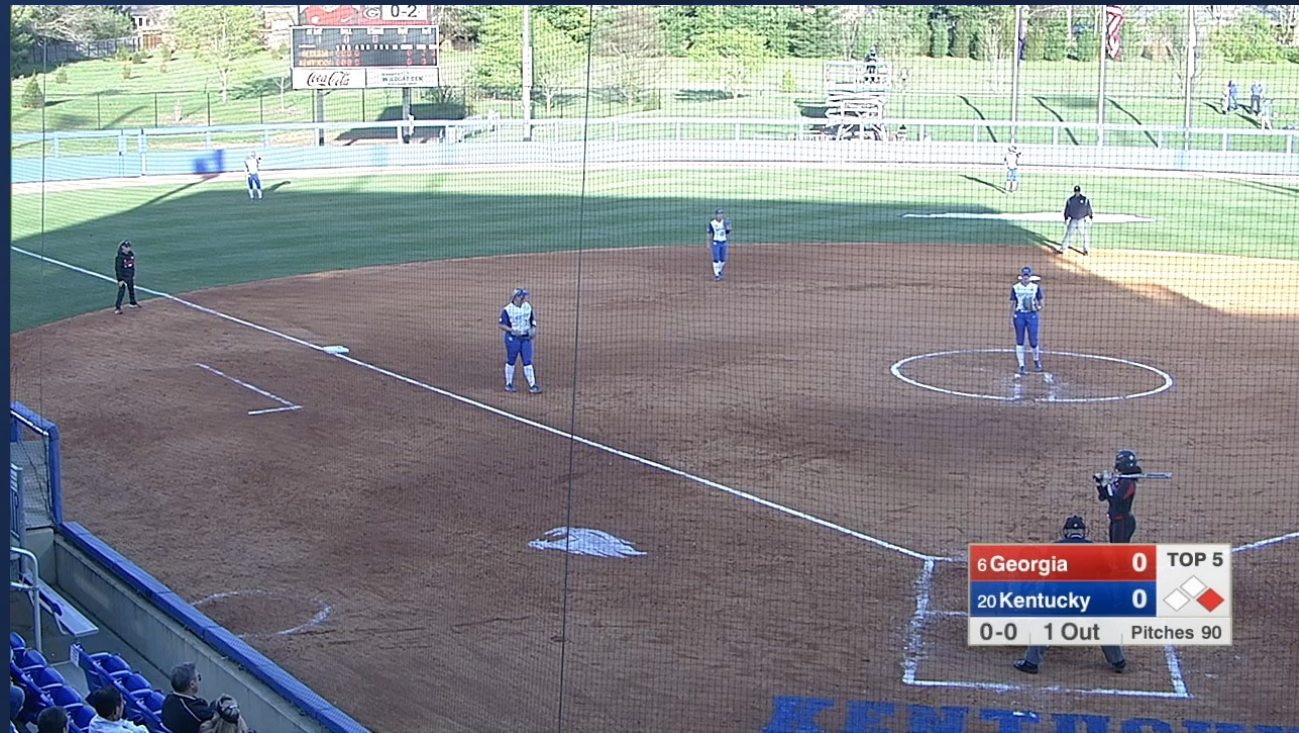
Do

	1	2	3	4	5	6	7	8	9
BD									
T									

Inn: 1 2 3 5 7 8 9 10

Runners: 0 1 2 3

Outs: 0 1 2



UNIVERSITY OF KENTUCKY

TALES FROM THE TAPE

How to scout while watching
game film

RACHEL LAWSON

