



**Kentucky at Missouri**

12/28/22 Mizzou Arena, Columbia  
2022-23 Men's Basketball

Game Time: 6:00 PM  
Game Duration: 2:19  
Attendance: 15,061

Officials: Tony Greene, Rob Rorke, Keith Kimble

**Kentucky - 75**

Record: 8-4 (0-1)

NO.	Name	F	Min	FG			3P			FT			Rebounds			Fouls		TP	AS	TO	ST	Blocks		+/-
				M-A	M-A	M-A	OR	DR	TOT	PF	FD	OR	DR	TOT	BS	BA								
24	Chris Livingston	F	11:46	1-5	0-1	0-0	0	4	4	1	0	2	0	2	0	2	0	2	0	0	0	1	-18	
34	Oscar Tshiebwe	F	40:00	6-8	0-0	11-17	9	10	19	3	10	23	0	3	2	0	3	2	0	1	1	-14		
55	Lance Ware	F	29:36	3-5	0-0	0-1	2	4	6	3	2	6	3	1	0	0	0	0	0	0	0	-7		
2	Sahvir Wheeler	G	38:01	5-12	2-3	0-0	0	0	0	5	1	12	8	2	0	0	1	1	2	1	1	-10		
22	Cason Wallace	G	32:15	7-16	5-13	0-0	0	0	0	4	1	19	1	1	2	1	1	2	1	1	1	-8		
0	Jacob Toppin		12:34	0-2	0-1	0-0	0	4	4	0	0	0	1	3	0	0	0	0	0	0	0	-10		
12	Antonio Reeves		15:25	3-6	0-3	2-3	0	0	0	2	2	8	1	2	0	0	0	0	0	0	0	-2		
1	CJ Fredrick		03:30	0-1	0-1	0-0	0	0	0	1	0	0	0	0	0	0	0	0	0	0	0	-4		
3	Adou Thiero		16:53	1-1	1-1	2-3	2	1	3	2	2	5	1	0	1	0	1	0	0	0	0	3		
Team							1	0	1			0			0									
<b>Totals</b>				26-56	8-23	15-24	14	23	37	21	18	75	15	14	5	1	4	1	4	1	4	-14		

Shooting By Period		
1st FG%	12-30	40.0%
3PT%	2-12	16.7%
FT%	4-6	66.7%
2nd FG%	14-26	53.8%
3PT%	6-11	54.5%
FT%	11-18	61.1%
GM FG%	26-56	46.4%
3PT%	8-23	34.8%
FT%	15-24	62.5%

Dead Ball Rebounds: 6, 0

Technical Fouls::NONE

**Missouri - 89**

Record: 12-1 (1-0)

NO.	Name	F	Min	FG			3P			FT			Rebounds			Fouls		TP	AS	TO	ST	Blocks		+/-
				M-A	M-A	M-A	OR	DR	TOT	PF	FD	OR	DR	TOT	BS	BA								
13	Ronnie DeGray III	F	16:31	0-1	0-1	0-0	1	0	1	4	0	0	2	1	1	2	0	2	1	1	2	0	-6	
24	Kobe Brown	F	34:31	10-18	4-8	6-8	0	6	6	3	6	30	2	2	2	0	0	2	2	2	0	0	18	
2	Tre Gomillion	G	19:47	3-4	1-1	0-0	1	3	4	2	0	7	2	0	1	0	1	0	1	0	1	15		
5	D'Moi Hodge	G	31:29	6-12	2-6	1-1	0	2	2	2	1	15	2	0	2	1	0	2	1	0	1	19		
10	Nick Honor	G	35:09	0-3	0-2	4-4	1	1	2	2	3	4	6	0	2	0	0	2	0	0	0	24		
35	Noah Carter		14:56	3-7	1-4	1-2	1	4	5	2	1	8	2	1	0	1	0	1	0	1	0	8		
4	DeAndre Gholston		19:19	2-5	1-1	7-8	0	0	0	0	5	12	1	1	0	0	0	1	0	0	0	1		
55	Sean East II		19:30	4-4	1-1	3-3	1	0	1	1	3	12	1	2	1	0	0	1	0	0	0	-5		
23	Aidan Shaw		08:28	0-3	0-1	0-0	1	0	1	2	1	0	0	0	0	0	0	0	0	0	0	0		
12	Jackson Francois		00:10	0-0	0-0	0-0	0	0	0	0	0	0	0	0	0	0	0	0	0	0	0	-2		
31	Ben Sternberg		00:10	0-0	0-0	1-2	0	0	0	0	1	1	0	0	0	0	0	0	0	0	0	-2		
Team							3	3	6			0			1									
<b>Totals</b>				28-57	10-25	23-28	9	19	28	18	21	89	18	8	9	4	1	14						

Shooting By Period		
1st FG%	16-33	48.5%
3PT%	6-14	42.9%
FT%	4-6	66.7%
2nd FG%	12-24	50.0%
3PT%	4-11	36.4%
FT%	19-22	86.4%
GM FG%	28-57	49.1%
3PT%	10-25	40.0%
FT%	23-28	82.1%

Dead Ball Rebounds: 2, 0

Technical Fouls::NONE

	UKY	MIZ
Biggest lead	1 (1st 18:38)	21 (2nd 4:07)
Best Scoring Run	7(2nd 13:55)	8(2nd 11:19)
Lead Changes	2	
Times Tied	0	
Time with Lead	00:23	38:51

Points from	UKY	MIZ
Turnovers	8	14
Paint	34	34
Second Chance	17	11
Fast Breaks	8	17
Bench	13	33

	Period by Period Scoring		
	1st	2nd	TOT
UKY	30	45	75
MIZ	42	47	89



**Kentucky at Missouri**

12/28/22 Mizzou Arena, Columbia  
2022-23 Men's Basketball

**Game Time:** 6:00 PM  
**Game Duration:** 2:19  
**Attendance:** 15,061

**Officials:** Tony Greene, Rob Rorke, Keith Kimble

**Period 1**

**Quarter Starters:**

<b>MIZ</b>	2 Gomillion T	5 Hodge D	10 Honor N	13 DeGray III R	24 Brown K
<b>UKY</b>	2 Wheeler S	22 Wallace C	24 Livingston C	34 Tshiebwe O	55 Ware L

Game Time	MIZ	Score	Diff	UKY
20:00	13 DEGRAY III R jumpball won			34 TSHIEBWE O jumpball lost
19:33	24 BROWN K 2pt FG in the paint, layup missed			
19:29	2 GOMILLION T offensive rebound (1)			
19:29	24 BROWN K 2pt FG second chance in the paint, layup missed			
19:25				55 WARE L defensive rebound (1)
19:20				22 WALLACE C 3pt FG , jump shot missed
19:18	2 GOMILLION T defensive rebound (2)			
19:14	5 HODGE D 2pt FG fast break in the paint, layup made (2)	<b>2-0</b>	<b>2</b>	
19:14	2 GOMILLION T assist (1)			
18:38		<b>2-3</b>	<b>-1</b>	22 WALLACE C 3pt FG , jump shot made (3)
18:15	24 BROWN K 3pt FG , jump shot made (3)	<b>5-3</b>	<b>2</b>	
18:15	13 DEGRAY III R assist (1)			
17:57				24 LIVINGSTON C 3pt FG , jump shot missed
17:55	5 HODGE D defensive rebound (1)			
17:38	2 GOMILLION T 3pt FG , jump shot made (3)	<b>8-3</b>	<b>5</b>	
17:38	10 HONOR N assist (1)			
17:17		<b>8-5</b>	<b>3</b>	22 WALLACE C 2pt FG outside the paint, jump shot made (5)
17:11	13 DEGRAY III R substitution out			
17:11	35 CARTER N substitution in			
16:50	2 GOMILLION T 2pt FG outside the paint, jump shot made (5)	<b>10-5</b>	<b>5</b>	
16:50	35 CARTER N assist (1)			
16:34				2 WHEELER S 2pt FG in the paint, layup blocked
16:34	5 HODGE D block (1)			
16:31	5 HODGE D defensive rebound (2)			
16:29	24 BROWN K 2pt FG fast break in the paint, dunk, made (5)	<b>12-5</b>	<b>7</b>	
16:29	5 HODGE D assist (1)			
16:11				22 WALLACE C 3pt FG , jump shot missed
16:09	35 CARTER N defensive rebound (1)			
15:45	5 HODGE D 3pt FG , jump shot missed			
15:43				24 LIVINGSTON C defensive rebound (1)
15:32				24 LIVINGSTON C 2pt FG outside the paint, jump shot missed
15:29	35 CARTER N defensive rebound (2)			
15:19	24 BROWN K foul drawn (1)			24 LIVINGSTON C foul personal (1 - 1)
15:19	2 GOMILLION T substitution out			
15:19	4 GHOLSTON D substitution in			
15:19				24 LIVINGSTON C substitution out
15:19				55 WARE L substitution out
15:19				0 TOPPIN J substitution in
15:19				12 REEVES A substitution in
15:15	35 CARTER N 3pt FG , jump shot made (3)	<b>15-5</b>	<b>10</b>	
15:15	10 HONOR N assist (2)			
14:51				2 WHEELER S 3pt FG , jump shot missed
14:49				34 TSHIEBWE O offensive rebound (1)



**Kentucky at Missouri**

12/28/22 Mizzou Arena, Columbia  
2022-23 Men's Basketball

**Game Time:** 6:00 PM  
**Game Duration:** 2:19  
**Attendance:** 15,061

**Officials:** Tony Greene, Rob Rorke, Keith Kimble

Game Time	MIZ	Score	Diff	UKY
14:48		15-7	8	34 TSHIEBWE O 2pt FG second chance in the paint, layup made (2)
14:36	24 BROWN K 2pt FG in the paint, layup made (7)	17-7	10	
14:36	24 BROWN K foul drawn (2)			12 REEVES A foul shooting (1 - 2)
14:35	5 HODGE D substitution out			
14:35	13 DEGRAY III R substitution in			
14:35	24 BROWN K free throw 1 - 1 missed			
14:34				34 TSHIEBWE O defensive rebound (2)
14:14				34 TSHIEBWE O turnover out of bounds (1)
14:14	35 CARTER N substitution out			
14:14	5 HODGE D substitution in			
13:47	4 GHOLSTON D 2pt FG from turnover outside the paint, jump shot missed			
13:47	offensive rebound (7)			
13:37	24 BROWN K 2pt FG from turnover second chance in the paint, layup missed			
13:35				0 TOPPIN J defensive rebound (1)
13:24				22 WALLACE C 3pt FG , jump shot missed
13:23				34 TSHIEBWE O offensive rebound (3)
13:23	13 DEGRAY III R foul shooting (1 - 1)			34 TSHIEBWE O foul drawn (1)
13:23				34 TSHIEBWE O free throw 1 - 2 missed
13:23				offensive dead ball rebound (1)
13:23	10 HONOR N substitution out			
13:23	55 EAST II S substitution in			
13:23		17-8	9	34 TSHIEBWE O free throw 2 - 2 made (3)
13:04	4 GHOLSTON D turnover travel (1)			
12:56		17-10	7	2 WHEELER S 2pt FG from turnover in the paint, layup made (2)
12:42	13 DEGRAY III R turnover bad pass (1)			
12:42	5 HODGE D substitution out			
12:42	13 DEGRAY III R substitution out			
12:42	2 GOMILLION T substitution in			
12:42	35 CARTER N substitution in			
12:23	24 BROWN K steal (1)			12 REEVES A turnover lost ball (1)
12:18	55 EAST II S turnover bad pass (1)			22 WALLACE C steal (1)
12:18	2 GOMILLION T foul personal (1 - 2)			22 WALLACE C foul drawn (1)
12:10				2 WHEELER S 2pt FG from turnover in the paint, layup missed
12:08	35 CARTER N defensive rebound (3)			
11:57	35 CARTER N turnover lost ball (1)			34 TSHIEBWE O steal (1)
11:49				22 WALLACE C 3pt FG from turnover, jump shot missed
11:46				34 TSHIEBWE O offensive rebound (4)
11:46	55 EAST II S steal (1)			34 TSHIEBWE O turnover lost ball (2)
11:35	24 BROWN K 3pt FG from turnover, jump shot missed			
11:33				0 TOPPIN J defensive rebound (2)
11:30				12 REEVES A 3pt FG , jump shot missed
11:25				34 TSHIEBWE O offensive rebound (5)
11:17				12 REEVES A 3pt FG second chance, jump shot missed
11:17	defensive rebound (9)			
11:17	2 GOMILLION T substitution out			
11:17	10 HONOR N substitution in			
11:17				12 REEVES A substitution out



**Kentucky at Missouri**

12/28/22 Mizzou Arena, Columbia  
2022-23 Men's Basketball

**Game Time:** 6:00 PM  
**Game Duration:** 2:19  
**Attendance:** 15,061

**Officials:** Tony Greene, Rob Rorke, Keith Kimble

Game Time	MIZ	Score	Diff	UKY
11:17				1 FREDRICK C substitution in
11:00	24 BROWN K turnover lost ball (1)			22 WALLACE C steal (2)
10:55				1 FREDRICK C 3pt FG from turnover, jump shot missed
10:53	24 BROWN K defensive rebound (1)			
10:44	4 GHOLSTON D substitution out			
10:44	5 HODGE D substitution in			
10:28	24 BROWN K 3pt FG , jump shot missed			
10:25				34 TSHIEBWE O defensive rebound (6)
10:11		<b>17-13</b>	<b>4</b>	22 WALLACE C 3pt FG , jump shot made (8)
10:11				0 TOPPIN J assist (1)
10:05	55 EAST II S 2pt FG fast break in the paint, layup made (2)	<b>19-13</b>	<b>6</b>	
10:05	10 HONOR N assist (3)			
10:05	55 EAST II S foul drawn (1)			22 WALLACE C foul shooting (1 - 3)
10:05	24 BROWN K substitution out			
10:05	23 SHAW A substitution in			
10:05				2 WHEELER S substitution out
10:05				24 LIVINGSTON C substitution in
10:05	55 EAST II S free throw fast break 1 - 1 made (3)	<b>20-13</b>	<b>7</b>	
09:51				24 LIVINGSTON C 2pt FG in the paint, jump shot missed
09:49	10 HONOR N defensive rebound (1)			
09:45	55 EAST II S 2pt FG in the paint, jump shot made (5)	<b>22-13</b>	<b>9</b>	
09:45	10 HONOR N assist (4)			
09:40				Timeout 30 Sec
09:23	5 HODGE D steal (1)			34 TSHIEBWE O turnover lost ball (3)
09:03	35 CARTER N 3pt FG from turnover, jump shot missed			
09:00	55 EAST II S offensive rebound (1)			
08:57	55 EAST II S foul drawn (2)			34 TSHIEBWE O foul shooting (1 - 4)
08:57	55 EAST II S free throw 1 - 2 made (6)	<b>23-13</b>	<b>10</b>	
08:57				22 WALLACE C substitution out
08:57				24 LIVINGSTON C substitution out
08:57				2 WHEELER S substitution in
08:57				12 REEVES A substitution in
08:57	55 EAST II S free throw 2 - 2 made (7)	<b>24-13</b>	<b>11</b>	
08:34	55 EAST II S foul shooting (1 - 3)			34 TSHIEBWE O foul drawn (2)
08:28	10 HONOR N steal (1)			0 TOPPIN J turnover bad pass (1)
08:22	5 HODGE D 3pt FG from turnover, jump shot missed			
08:20	23 SHAW A offensive rebound (1)			
08:20	23 SHAW A foul drawn (1)			1 FREDRICK C foul personal (1 - 5)
08:20				0 TOPPIN J substitution out
08:20				55 WARE L substitution in
08:20	35 CARTER N substitution out			
08:20	24 BROWN K substitution in			
08:13	24 BROWN K 2pt FG from turnover second chance in the paint, jump shot missed			
08:10				34 TSHIEBWE O defensive rebound (7)
07:47				2 WHEELER S 2pt FG outside the paint, jump shot missed
07:47				34 TSHIEBWE O offensive rebound (8)
07:47	10 HONOR N foul shooting (1 - 4)			34 TSHIEBWE O foul drawn (3)
07:47				Timeout media



**Kentucky at Missouri**

12/28/22 Mizzou Arena, Columbia  
2022-23 Men's Basketball

**Game Time:** 6:00 PM  
**Game Duration:** 2:19  
**Attendance:** 15,061

**Officials:** Tony Greene, Rob Rorke, Keith Kimble

Game Time	MIZ	Score	Diff	UKY
07:47				1 FREDRICK C substitution out
07:47				22 WALLACE C substitution in
07:47				34 TSHIEBWE O free throw 1 - 2 missed
07:47				offensive dead ball rebound (2)
07:47		<b>24-14</b>	<b>10</b>	34 TSHIEBWE O free throw 2 - 2 made (4)
07:16	23 SHAW A 3pt FG , jump shot missed			
07:14				55 WARE L defensive rebound (2)
07:07				12 REEVES A 3pt FG , jump shot missed
07:04	24 BROWN K defensive rebound (2)			
06:39	5 HODGE D 3pt FG , jump shot made (5)	<b>27-14</b>	<b>13</b>	
06:39	55 EAST II S assist (1)			
06:32	23 SHAW A foul personal (1 - 5)			2 WHEELER S foul drawn (1)
06:22		<b>27-16</b>	<b>11</b>	22 WALLACE C 2pt FG in the paint, layup made (10)
06:02	23 SHAW A 2pt FG in the paint, layup missed			
05:59				34 TSHIEBWE O defensive rebound (9)
05:54				55 WARE L 2pt FG in the paint, layup missed
05:53				34 TSHIEBWE O offensive rebound (10)
05:53	jump ball situation			
05:47		<b>27-18</b>	<b>9</b>	12 REEVES A 2pt FG second chance in the paint, layup made (2)
05:47				55 WARE L assist (1)
05:47	5 HODGE D foul shooting (1 - 6)			12 REEVES A foul drawn (1)
05:47		<b>27-19</b>	<b>8</b>	12 REEVES A free throw 1 - 1 made (3)
05:22	10 HONOR N foul drawn (1)			22 WALLACE C foul personal (2 - 6)
05:22				22 WALLACE C substitution out
05:22				24 LIVINGSTON C substitution in
05:21	24 BROWN K 2pt FG in the paint, layup made (9)	<b>29-19</b>	<b>10</b>	
04:47		<b>29-21</b>	<b>8</b>	24 LIVINGSTON C 2pt FG in the paint, layup made (2)
04:47				12 REEVES A assist (1)
04:43	5 HODGE D 2pt FG fast break in the paint, layup made (7)	<b>31-21</b>	<b>10</b>	
04:43	5 HODGE D foul drawn (1)			2 WHEELER S foul shooting (1 - 7)
04:43	5 HODGE D free throw fast break 1 - 1 made (8)	<b>32-21</b>	<b>11</b>	
04:21		<b>32-23</b>	<b>9</b>	34 TSHIEBWE O 2pt FG in the paint, layup made (6)
04:21				2 WHEELER S assist (1)
04:21	24 BROWN K foul shooting (1 - 7)			34 TSHIEBWE O foul drawn (4)
04:21	23 SHAW A substitution out			
04:21	35 CARTER N substitution in			
04:21		<b>32-24</b>	<b>8</b>	34 TSHIEBWE O free throw 1 - 1 made (7)
04:03	5 HODGE D 3pt FG , jump shot missed			
04:00				24 LIVINGSTON C defensive rebound (2)
03:58				2 WHEELER S 2pt FG in the paint, layup missed
03:51	24 BROWN K defensive rebound (3)			
03:36	55 EAST II S 3pt FG , jump shot made (10)	<b>35-24</b>	<b>11</b>	
03:19		<b>35-26</b>	<b>9</b>	34 TSHIEBWE O 2pt FG in the paint, layup made (9)
03:19				2 WHEELER S assist (2)
03:10	24 BROWN K 3pt FG , jump shot made (12)	<b>38-26</b>	<b>12</b>	
03:10	5 HODGE D assist (2)			
02:59				24 LIVINGSTON C 2pt FG in the paint, layup blocked
02:59	35 CARTER N block (1)			

**Kentucky at Missouri**12/28/22 Mizzou Arena, Columbia  
2022-23 Men's Basketball

Game Time: 6:00 PM

Game Duration: 2:19

Attendance: 15,061

Officials: Tony Greene, Rob Rorke, Keith Kimble

Game Time	MIZ	Score	Diff	UKY
02:55	35 CARTER N defensive rebound (4)			
02:49	35 CARTER N 3pt FG , jump shot missed			
02:47				24 LIVINGSTON C defensive rebound (3)
02:39				2 WHEELER S turnover out of bounds (1)
02:39	Timeout media			
02:39				24 LIVINGSTON C substitution out
02:39				0 TOPPIN J substitution in
02:06	5 HODGE D 2pt FG from turnover outside the paint, jump shot missed			
02:03	35 CARTER N offensive rebound (5)			
02:03	35 CARTER N 2pt FG from turnover second chance in the paint, layup made (5)	<b>40-26</b>	<b>14</b>	
01:42				12 REEVES A turnover travel (2)
01:42				0 TOPPIN J substitution out
01:42				24 LIVINGSTON C substitution in
01:31	24 BROWN K foul drawn (3)			55 WARE L foul personal (1 - 8)
01:30	35 CARTER N substitution out			
01:30	23 SHAW A substitution in			
01:30	24 BROWN K 1&1 free throw 1 missed			
01:29				34 TSHIEBWE O defensive rebound (11)
01:21		<b>40-28</b>	<b>12</b>	55 WARE L 2pt FG in the paint, dunk, made (2)
01:21				2 WHEELER S assist (3)
01:07	55 EAST II S 2pt FG in the paint, layup made (12)	<b>42-28</b>	<b>14</b>	
00:58				2 WHEELER S turnover lost ball (2)
00:58	Timeout 30 Sec			
00:58	24 BROWN K substitution out			
00:58	13 DEGRAY III R substitution in			
00:43	10 HONOR N 2pt FG from turnover outside the paint, jump shot missed			
00:40				24 LIVINGSTON C defensive rebound (4)
00:31		<b>42-30</b>	<b>12</b>	12 REEVES A 2pt FG in the paint, layup made (5)
00:00	23 SHAW A 2pt FG in the paint, layup missed			
00:00				34 TSHIEBWE O defensive rebound (12)
<b>END OF PERIOD</b>				
<b>MIZ 42-30 UKY</b>				



**Kentucky at Missouri**

12/28/22 Mizzou Arena, Columbia  
2022-23 Men's Basketball

Game Time: 6:00 PM  
Game Duration: 2:19  
Attendance: 15,061

Officials: Tony Greene, Rob Rorke, Keith Kimble

**Kentucky - 30**

NO.	Name	F	Min	FG			3P			FT			Rebounds			Fouls		TP	AS	TO	ST	Blocks		+/-
				M-A	M-A	M-A	OR	DR	TOT	PF	FD	BS	BA											
24	Chris Livingston	F	10:14	1-5	0-1	0-0	0	4	4	1	0	2	0	0	0	0	0	0	0	0	0	1	-13	
34	Oscar Tshiebwe	F	20:00	3-3	0-0	3-5	6	6	12	1	4	9	0	3	1	0	0	0	0	0	0	0	-12	
55	Lance Ware	F	13:01	1-2	0-0	0-0	0	2	2	1	0	2	1	0	0	0	0	0	0	0	0	0	-8	
2	Sahvir Wheeler	G	18:52	1-6	0-1	0-0	0	0	0	1	1	2	3	2	0	0	1	2	0	0	0	1	-8	
22	Cason Wallace	G	13:28	4-8	2-6	0-0	0	0	0	2	1	10	0	0	0	2	0	0	2	0	0	0	-7	
0	Jacob Toppin		07:56	0-0	0-0	0-0	0	2	2	0	0	0	0	1	1	0	0	0	0	0	0	0	-6	
12	Antonio Reeves		12:59	2-5	0-3	1-1	0	0	0	1	1	5	1	2	0	0	0	0	0	0	0	0	-2	
1	CJ Fredrick		03:30	0-1	0-1	0-0	0	0	0	1	0	0	0	0	0	0	0	0	0	0	0	0	-4	
Team							0	0	0			0			0									
<b>Totals</b>				12-30	2-12	4-6	6	14	20	8	7	30	6	8	3	0	2							-12

Shooting By Period		
1st FG%	12-30	40.0%
3PT%	2-12	16.7%
FT%	4-6	66.7%
GM FG%	12-30	40.0%
3PT%	2-12	16.7%
FT%	4-6	66.7%

Dead Ball Rebounds: 2, 0

Technical Fouls::NONE

**Missouri - 42**

NO.	Name	F	Min	FG			3P			FT			Rebounds			Fouls		TP	AS	TO	ST	Blocks		+/-
				M-A	M-A	M-A	OR	DR	TOT	PF	FD	BS	BA											
13	Ronnie DeGray III	F	05:41	0-0	0-0	0-0	0	0	0	1	0	0	1	1	1	0	0	0	0	0	0	0	-2	
24	Kobe Brown	F	17:16	5-11	2-4	0-2	0	3	3	1	3	12	0	1	1	0	0	0	0	0	0	0	9	
2	Tre Gomillion	G	06:06	2-2	1-1	0-0	1	1	2	1	0	5	1	0	0	0	0	0	0	0	0	0	7	
5	D'Moi Hodge	G	17:41	3-7	1-4	1-1	0	2	2	1	1	8	2	0	1	1	0	1	1	0	0	12		
10	Nick Honor	G	17:54	0-1	0-0	0-0	0	1	1	1	1	0	4	0	1	0	0	0	0	0	0	15		
35	Noah Carter		10:10	2-4	1-3	0-0	1	4	5	0	0	5	1	1	0	1	0	1	0	0	0	16		
4	DeAndre Gholston		04:35	0-1	0-0	0-0	0	0	0	0	0	0	0	0	1	0	0	0	0	0	0	0		
55	Sean East II		13:23	4-4	1-1	3-3	1	0	1	1	2	12	1	1	1	0	0	0	0	0	0	2		
23	Aidan Shaw		07:14	0-3	0-1	0-0	1	0	1	1	1	0	0	0	0	0	0	0	0	0	0	1		
Team							1	1	2			0			0									
<b>Totals</b>				16-33	6-14	4-6	5	12	17	7	8	42	10	5	4	2	0	12						

Shooting By Period		
1st FG%	16-33	48.5%
3PT%	6-14	42.9%
FT%	4-6	66.7%
GM FG%	16-33	48.5%
3PT%	6-14	42.9%
FT%	4-6	66.7%

Dead Ball Rebounds: 0, 0

Technical Fouls::NONE

	UKY	MIZ
Biggest lead	1 (1st 18:38)	14 (1st 2:03)
Best Scoring Run	6(1st 10:11)	7(1st 15:15)
Lead Changes	2	
Times Tied	0	
Time with Lead	00:23	18:51

	UKY	MIZ
Points from		
Turnovers	2	4
Paint	18	18
Second Chance	7	4
Fast Breaks	0	10
Bench	5	17

	Period by Period Scoring		
	1st	2nd	TOT
UKY	30	45	75
MIZ	42	47	89



**Kentucky at Missouri**

12/28/22 Mizzou Arena, Columbia  
2022-23 Men's Basketball

**Game Time:** 6:00 PM  
**Game Duration:** 2:19  
**Attendance:** 15,061

**Officials:** Tony Greene, Rob Rorke, Keith Kimble

**Period 2**

**Quarter Starters:**

<b>MIZ</b>	2 Gomillion T	5 Hodge D	10 Honor N	13 DeGray III R	24 Brown K
<b>UKY</b>	2 Wheeler S	22 Wallace C	24 Livingston C	34 Tshiebwe O	55 Ware L

Game Time	MIZ	Score	Diff	UKY
20:00	23 SHAW A substitution out			
20:00	55 EAST II S substitution out			
20:00	2 GOMILLION T substitution in			
20:00	24 BROWN K substitution in			
20:00				12 REEVES A substitution out
20:00				22 WALLACE C substitution in
19:45	24 BROWN K 2pt FG in the paint, layup made (14)	<b>44-30</b>	<b>14</b>	
19:45	24 BROWN K foul drawn (4)			22 WALLACE C foul shooting (3 - 1)
19:45	24 BROWN K free throw 1 - 1 made (15)	<b>45-30</b>	<b>15</b>	
19:33	24 BROWN K steal (2)			24 LIVINGSTON C turnover bad pass (1)
19:04	5 HODGE D 2pt FG from turnover outside the paint, jump shot missed			
19:01	13 DEGRAY III R offensive rebound (1)			
19:00	13 DEGRAY III R 3pt FG from turnover second chance, jump shot missed			
18:57	offensive rebound (19)			
18:43	24 BROWN K 2pt FG from turnover second chance in the paint, layup made (17)	<b>47-30</b>	<b>17</b>	
18:28				24 LIVINGSTON C turnover dribbling violation (2)
18:28				24 LIVINGSTON C substitution out
18:28				12 REEVES A substitution in
18:14	24 BROWN K 3pt FG from turnover, jump shot missed			
18:11				34 TSHIEBWE O defensive rebound (13)
18:09	10 HONOR N foul shooting (2 - 1)			34 TSHIEBWE O foul drawn (5)
18:09				34 TSHIEBWE O free throw fast break 1 - 2 missed
18:09				offensive dead ball rebound (3)
18:09	13 DEGRAY III R substitution out			
18:09	35 CARTER N substitution in			
18:08				34 TSHIEBWE O free throw fast break 2 - 2 missed
18:07				55 WARE L offensive rebound (3)
18:06				55 WARE L 2pt FG second chance in the paint, layup missed
18:06				34 TSHIEBWE O offensive rebound (14)
18:06	35 CARTER N foul shooting (1 - 2)			34 TSHIEBWE O foul drawn (6)
18:06		<b>47-31</b>	<b>16</b>	34 TSHIEBWE O free throw fast break 1 - 2 made (10)
18:06				22 WALLACE C substitution out
18:06				0 TOPPIN J substitution in
18:06		<b>47-32</b>	<b>15</b>	34 TSHIEBWE O free throw fast break 2 - 2 made (11)
17:42	35 CARTER N 3pt FG , jump shot missed			
17:40				0 TOPPIN J defensive rebound (3)
17:40	jump ball situation			
17:16				0 TOPPIN J 3pt FG , jump shot missed
17:13	24 BROWN K defensive rebound (4)			
17:13	5 HODGE D 2pt FG fast break in the paint, layup made (10)	<b>49-32</b>	<b>17</b>	
17:13	24 BROWN K assist (1)			





**Kentucky at Missouri**

12/28/22 Mizzou Arena, Columbia  
2022-23 Men's Basketball

**Game Time:** 6:00 PM  
**Game Duration:** 2:19  
**Attendance:** 15,061

**Officials:** Tony Greene, Rob Rorke, Keith Kimble

Game Time	MIZ	Score	Diff	UKY
16:58				0 TOPPIN J 2pt FG in the paint, jump shot missed
16:56	2 GOMILLION T defensive rebound (3)			
16:53	35 CARTER N foul drawn (1)			34 TSHIEBWE O foul shooting (2 - 2)
16:53	35 CARTER N free throw fast break 1 - 2 missed			
16:53	offensive dead ball rebound (1)			
16:53	24 BROWN K substitution out			
16:53	13 DEGRAY III R substitution in			
16:53				0 TOPPIN J substitution out
16:53				12 REEVES A substitution out
16:53				3 THIERO A substitution in
16:53				22 WALLACE C substitution in
16:53	35 CARTER N free throw fast break 2 - 2 made (6)	<b>50-32</b>	<b>18</b>	
16:44				22 WALLACE C 2pt FG in the paint, layup blocked
16:44	13 DEGRAY III R block (1)			
16:44				34 TSHIEBWE O offensive rebound (15)
16:44	13 DEGRAY III R foul shooting (2 - 3)			34 TSHIEBWE O foul drawn (7)
16:44		<b>50-33</b>	<b>17</b>	34 TSHIEBWE O free throw 1 - 2 made (12)
16:44	2 GOMILLION T substitution out			
16:44	55 EAST II S substitution in			
16:44		<b>50-34</b>	<b>16</b>	34 TSHIEBWE O free throw 2 - 2 made (13)
16:29	5 HODGE D 2pt FG in the paint, layup made (12)	<b>52-34</b>	<b>18</b>	
16:29	35 CARTER N assist (2)			
16:15		<b>52-37</b>	<b>15</b>	3 THIERO A 3pt FG , jump shot made (3)
16:15				55 WARE L assist (2)
15:57	35 CARTER N 2pt FG in the paint, layup made (8)	<b>54-37</b>	<b>17</b>	
15:47		<b>54-39</b>	<b>15</b>	55 WARE L 2pt FG in the paint, dunk, made (4)
15:47	5 HODGE D foul shooting (2 - 4)			55 WARE L foul drawn (1)
15:46	Timeout media			
15:46				55 WARE L free throw 1 - 1 missed
15:45				3 THIERO A offensive rebound (1)
15:36				34 TSHIEBWE O 2pt FG second chance in the paint, layup blocked
15:36	13 DEGRAY III R block (2)			
15:36	defensive rebound (22)			
15:17	35 CARTER N 2pt FG in the paint, jump shot missed			
15:17				55 WARE L defensive rebound (4)
15:17	35 CARTER N foul personal (2 - 5)			55 WARE L foul drawn (2)
14:54				22 WALLACE C 3pt FG , jump shot missed
14:54				offensive rebound (28)
14:54	10 HONOR N substitution out			
14:54	4 GHOLSTON D substitution in			
14:41		<b>54-42</b>	<b>12</b>	2 WHEELER S 3pt FG second chance, jump shot made (5)
14:41				22 WALLACE C assist (1)
14:18	4 GHOLSTON D foul drawn (1)			3 THIERO A foul personal (1 - 3)
14:18	13 DEGRAY III R substitution out			
14:18	24 BROWN K substitution in			
14:00	4 GHOLSTON D 2pt FG outside the paint, jump shot missed			
13:58				55 WARE L defensive rebound (5)
13:55		<b>54-44</b>	<b>10</b>	2 WHEELER S 2pt FG fast break in the paint, layup made (7)



**Kentucky at Missouri**

12/28/22 Mizzou Arena, Columbia  
2022-23 Men's Basketball

**Game Time:** 6:00 PM  
**Game Duration:** 2:19  
**Attendance:** 15,061

**Officials:** Tony Greene, Rob Rorke, Keith Kimble

Game Time	MIZ	Score	Diff	UKY
13:33	4 GHOLSTON D foul drawn (2)			55 WARE L foul shooting (2 - 4)
13:33	4 GHOLSTON D free throw 1 - 2 made (1)	<b>55-44</b>	<b>11</b>	
13:33	35 CARTER N substitution out			
13:33	23 SHAW A substitution in			
13:33	4 GHOLSTON D free throw 2 - 2 made (2)	<b>56-44</b>	<b>12</b>	
13:20	23 SHAW A foul shooting (2 - 6)			34 TSHIEBWE O foul drawn (8)
13:20				34 TSHIEBWE O free throw 1 - 2 missed
13:20				offensive dead ball rebound (4)
13:20		<b>56-45</b>	<b>11</b>	34 TSHIEBWE O free throw 2 - 2 made (14)
12:53	55 EAST II S foul drawn (3)			2 WHEELER S foul personal (2 - 5)
12:52	55 EAST II S turnover bad pass (2)			34 TSHIEBWE O steal (2)
12:36				34 TSHIEBWE O 2pt FG from turnover in the paint, layup missed
12:31				55 WARE L offensive rebound (6)
12:31		<b>56-47</b>	<b>9</b>	55 WARE L 2pt FG from turnover second chance in the paint, layup made (6)
12:19	4 GHOLSTON D foul drawn (3)			3 THIERO A foul shooting (2 - 8)
12:19	4 GHOLSTON D free throw 1 - 2 made (3)	<b>57-47</b>	<b>10</b>	
12:19	23 SHAW A substitution out			
12:19	55 EAST II S substitution out			
12:19	2 GOMILLION T substitution in			
12:19	10 HONOR N substitution in			
12:19	4 GHOLSTON D free throw 2 - 2 made (4)	<b>58-47</b>	<b>11</b>	
11:58	5 HODGE D steal (2)			55 WARE L turnover lost ball (1)
11:54	5 HODGE D 3pt FG fast break from turnover, jump shot made (15)	<b>61-47</b>	<b>14</b>	
11:54	4 GHOLSTON D assist (1)			
11:50				Timeout 30 Sec
11:50				55 WARE L substitution out
11:50				0 TOPPIN J substitution in
11:30	2 GOMILLION T steal (1)			0 TOPPIN J turnover bad pass (2)
11:25	10 HONOR N 3pt FG from turnover, jump shot missed			
11:21	10 HONOR N offensive rebound (2)			
11:19	24 BROWN K 3pt FG from turnover second chance, jump shot made (20)	<b>64-47</b>	<b>17</b>	
11:19	10 HONOR N assist (5)			
10:58		<b>64-50</b>	<b>14</b>	22 WALLACE C 3pt FG , jump shot made (13)
10:58				2 WHEELER S assist (4)
10:33	24 BROWN K 3pt FG , jump shot made (23)	<b>67-50</b>	<b>17</b>	
10:33	2 GOMILLION T assist (2)			
10:13				22 WALLACE C 3pt FG , jump shot missed
10:12				34 TSHIEBWE O offensive rebound (16)
10:12	24 BROWN K foul shooting (2 - 7)			34 TSHIEBWE O foul drawn (9)
10:12				Timeout media
10:12				34 TSHIEBWE O free throw 1 - 2 missed
10:12				offensive dead ball rebound (5)
10:12		<b>67-51</b>	<b>16</b>	34 TSHIEBWE O free throw 2 - 2 made (15)
09:52	2 GOMILLION T 2pt FG in the paint, dunk, made (7)	<b>69-51</b>	<b>18</b>	
09:52	10 HONOR N assist (6)			
09:32				2 WHEELER S 2pt FG in the paint, layup missed
09:32	2 GOMILLION T defensive rebound (4)			



**Kentucky at Missouri**

12/28/22 Mizzou Arena, Columbia  
2022-23 Men's Basketball

**Game Time:** 6:00 PM  
**Game Duration:** 2:19  
**Attendance:** 15,061

**Officials:** Tony Greene, Rob Rorke, Keith Kimble

Game Time	MIZ	Score	Diff	UKY
09:32	jump ball situation			
09:09	5 HODGE D 3pt FG , jump shot missed			
09:06				0 TOPPIN J defensive rebound (4)
09:04		<b>69-54</b>	<b>15</b>	22 WALLACE C 3pt FG , jump shot made (16)
09:04				2 WHEELER S assist (5)
08:47	10 HONOR N foul drawn (2)			2 WHEELER S foul shooting (3 - 7)
08:47	10 HONOR N free throw 1 - 2 made (1)	<b>70-54</b>	<b>16</b>	
08:47	10 HONOR N free throw 2 - 2 made (2)	<b>71-54</b>	<b>17</b>	
08:29	10 HONOR N steal (2)			0 TOPPIN J turnover bad pass (3)
08:25	2 GOMILLION T 2pt FG from turnover in the paint, layup blocked			
08:25				22 WALLACE C block (1)
08:25	offensive rebound (25)			
08:25				0 TOPPIN J substitution out
08:25				55 WARE L substitution in
08:25	2 GOMILLION T substitution out			
08:25	13 DEGRAY III R substitution in			
08:01	24 BROWN K foul drawn (5)			55 WARE L foul shooting (3 - 8)
08:01	24 BROWN K free throw 1 - 2 made (24)	<b>72-54</b>	<b>18</b>	
08:01	5 HODGE D substitution out			
08:01	2 GOMILLION T substitution in			
08:01	24 BROWN K free throw 2 - 2 made (25)	<b>73-54</b>	<b>19</b>	
07:48		<b>73-57</b>	<b>16</b>	2 WHEELER S 3pt FG , jump shot made (10)
07:48				3 THIERO A assist (1)
07:34	24 BROWN K 2pt FG in the paint, layup made (27)	<b>75-57</b>	<b>18</b>	
07:34	13 DEGRAY III R assist (2)			
07:22		<b>75-59</b>	<b>16</b>	34 TSHIEBWE O 2pt FG in the paint, layup made (17)
07:22				2 WHEELER S assist (6)
06:52	4 GHOLSTON D foul drawn (4)			22 WALLACE C foul personal (4 - 9)
06:52	Timeout media			
06:52	4 GHOLSTON D 1&1 free throw 1 made (5)	<b>76-59</b>	<b>17</b>	
06:51	4 GHOLSTON D 1&1 free throw 2 missed			
06:50				34 TSHIEBWE O defensive rebound (17)
06:21				22 WALLACE C 3pt FG , jump shot missed
06:20				3 THIERO A offensive rebound (2)
06:20	2 GOMILLION T foul personal (2 - 8)			3 THIERO A foul drawn (1)
06:18				3 THIERO A 1&1 free throw 1 missed
06:17	24 BROWN K defensive rebound (5)			
06:02	4 GHOLSTON D 2pt FG in the paint, layup made (7)	<b>78-59</b>	<b>19</b>	
05:52	24 BROWN K foul shooting (3 - 9)			34 TSHIEBWE O foul drawn (10)
05:52		<b>78-60</b>	<b>18</b>	34 TSHIEBWE O free throw 1 - 2 made (18)
05:52		<b>78-61</b>	<b>17</b>	34 TSHIEBWE O free throw 2 - 2 made (19)
05:23	24 BROWN K foul drawn (6)			34 TSHIEBWE O foul shooting (3 - 10)
05:23	24 BROWN K free throw 1 - 3 made (28)	<b>79-61</b>	<b>18</b>	
05:23	24 BROWN K free throw 2 - 3 made (29)	<b>80-61</b>	<b>19</b>	
05:23	24 BROWN K free throw 3 - 3 made (30)	<b>81-61</b>	<b>20</b>	
05:02				2 WHEELER S 2pt FG in the paint, layup missed
04:59	24 BROWN K defensive rebound (6)			
04:33	24 BROWN K turnover bad pass (2)			3 THIERO A steal (1)
04:28	13 DEGRAY III R foul shooting (3 - 10)			3 THIERO A foul drawn (2)



**Kentucky at Missouri**

12/28/22 Mizzou Arena, Columbia  
2022-23 Men's Basketball

**Game Time:** 6:00 PM  
**Game Duration:** 2:19  
**Attendance:** 15,061

**Officials:** Tony Greene, Rob Rorke, Keith Kimble

Game Time	MIZ	Score	Diff	UKY
04:28		<b>81-62</b>	<b>19</b>	3 THIERO A free throw fast break 1 - 2 made (4)
04:28		<b>81-63</b>	<b>18</b>	3 THIERO A free throw fast break 2 - 2 made (5)
04:28	13 DEGRAY III R substitution out			
04:28	5 HODGE D substitution in			
04:07	4 GHOLSTON D 3pt FG , jump shot made (10)	<b>84-63</b>	<b>21</b>	
04:07	24 BROWN K assist (2)			
03:42				22 WALLACE C 3pt FG , jump shot missed
03:42	defensive rebound (28)			
03:40	Timeout media			
03:18	4 GHOLSTON D 2pt FG in the paint, layup missed			
03:16				3 THIERO A defensive rebound (3)
03:13		<b>84-65</b>	<b>19</b>	2 WHEELER S 2pt FG fast break in the paint, layup made (12)
02:39	turnover shot clock (8)			
02:39	5 HODGE D substitution out			
02:39	13 DEGRAY III R substitution in			
02:25		<b>84-67</b>	<b>17</b>	34 TSHIEBWE O 2pt FG from turnover in the paint, layup made (21)
02:25				2 WHEELER S assist (7)
01:52	24 BROWN K 3pt FG , jump shot missed			
01:50				34 TSHIEBWE O defensive rebound (18)
01:44		<b>84-70</b>	<b>14</b>	22 WALLACE C 3pt FG , jump shot made (19)
01:44				2 WHEELER S assist (8)
01:42				Timeout 30 Sec
01:42	2 GOMILLION T substitution out			
01:42	55 EAST II S substitution in			
01:17	10 HONOR N foul drawn (3)			2 WHEELER S foul personal (4 - 11)
01:17	10 HONOR N free throw 1 - 2 made (3)	<b>85-70</b>	<b>15</b>	
01:17	10 HONOR N free throw 2 - 2 made (4)	<b>86-70</b>	<b>16</b>	
01:08		<b>86-72</b>	<b>14</b>	34 TSHIEBWE O 2pt FG in the paint, layup made (23)
01:08				55 WARE L assist (3)
01:03	Timeout 30 Sec			
01:03	13 DEGRAY III R substitution out			
01:03	2 GOMILLION T substitution in			
00:51	4 GHOLSTON D foul drawn (5)			2 WHEELER S foul personal (5 - 12)
00:51	2 GOMILLION T substitution out			
00:51	13 DEGRAY III R substitution in			
00:51				2 WHEELER S substitution out
00:51				12 REEVES A substitution in
00:51	4 GHOLSTON D free throw 1 - 2 made (11)	<b>87-72</b>	<b>15</b>	
00:51	4 GHOLSTON D free throw 2 - 2 made (12)	<b>88-72</b>	<b>16</b>	
00:39	13 DEGRAY III R steal (1)			22 WALLACE C turnover bad pass (1)
00:15	10 HONOR N 3pt FG from turnover, jump shot missed			
00:13				34 TSHIEBWE O defensive rebound (19)
00:09	13 DEGRAY III R foul shooting (4 - 11)			12 REEVES A foul drawn (2)
00:09	4 GHOLSTON D substitution out			
00:09	10 HONOR N substitution out			
00:09	24 BROWN K substitution out			
00:09	12 FRANCOIS J substitution in			
00:09	31 STERNBERG B substitution in			



Official Basketball Play by Play - Second Half

### Kentucky at Missouri

12/28/22 Mizzou Arena, Columbia  
2022-23 Men's Basketball

Game Time: 6:00 PM

Game Duration: 2:19

Attendance: 15,061

Officials: Tony Greene, Rob Rorke, Keith Kimble

Game Time	MIZ	Score	Diff	UKY
00:09	35 CARTER N substitution in			
00:09				12 REEVES A free throw 1 - 2 missed
00:09				offensive dead ball rebound (6)
00:09		<b>88-73</b>	<b>15</b>	12 REEVES A free throw 2 - 2 made (6)
00:08	31 STERNBERG B foul drawn (1)			12 REEVES A foul personal (2 - 13)
00:08	31 STERNBERG B free throw fast break 1 - 2 missed			
00:08	offensive dead ball rebound (2)			
00:08	31 STERNBERG B free throw fast break 2 - 2 made (1)	<b>89-73</b>	<b>16</b>	
00:00		<b>89-75</b>	<b>14</b>	12 REEVES A 2pt FG in the paint, jump shot made (8)
<b>END OF GAME</b>				
<b>MIZ 89-75 UKY</b>				



### Kentucky at Missouri

12/28/22 Mizzou Arena, Columbia  
2022-23 Men's Basketball

Game Time: 6:00 PM  
Game Duration: 2:19  
Attendance: 15,061

Officials: Tony Greene, Rob Rorke, Keith Kimble

#### Kentucky - 45

NO.	Name	F	Min	FG	3P	FT	Rebounds			Fouls		TP	AS	TO	ST	Blocks		+/-
				M-A	M-A	M-A	OR	DR	TOT	PF	FD					BS	BA	
24	Chris Livingston	F	01:32	0-0	0-0	0-0	0	0	0	0	0	0	0	2	0	0	0	-5
34	Oscar Tshiebwe	F	20:00	3-5	0-0	8-12	3	4	7	2	6	14	0	0	1	0	1	-2
55	Lance Ware	F	16:35	2-3	0-0	0-1	2	2	4	2	2	4	2	1	0	0	0	1
2	Sahvir Wheeler	G	19:09	4-6	2-2	0-0	0	0	0	4	0	10	5	0	0	0	0	-2
22	Cason Wallace	G	18:47	3-8	3-7	0-0	0	0	0	2	0	9	1	1	0	1	1	-1
12	Antonio Reeves		02:26	1-1	0-0	1-2	0	0	0	1	1	3	0	0	0	0	0	0
0	Jacob Toppin		04:38	0-2	0-1	0-0	0	2	2	0	0	0	0	2	0	0	0	-4
3	Adou Thiero		16:53	1-1	1-1	2-3	2	1	3	2	2	5	1	0	1	0	0	3
Team							1	0	1			0		0				
<b>Totals</b>				14-26	6-11	11-18	8	9	17	13	11	45	9	6	2	1	2	-2

Shooting By Period		
2 <sup>nd</sup> FG%	14-26	53.8%
3PT%	6-11	54.5%
FT%	11-18	61.1%
GM FG%	14-26	53.8%
3PT%	6-11	54.5%
FT%	11-18	61.1%

Dead Ball Rebounds: 4, 0

Technical Fouls::NONE

#### Missouri - 47

NO.	Name	F	Min	FG	3P	FT	Rebounds			Fouls		TP	AS	TO	ST	Blocks		+/-
				M-A	M-A	M-A	OR	DR	TOT	PF	FD					BS	BA	
13	Ronnie DeGray III	F	10:50	0-1	0-1	0-0	1	0	1	3	0	0	1	0	1	2	0	-4
24	Kobe Brown	F	17:15	5-7	2-4	6-6	0	3	3	2	3	18	2	1	1	0	0	9
2	Tre Gomillion	G	13:41	1-2	0-0	0-0	0	2	2	1	0	2	1	0	1	0	1	8
5	D'Moi Hodge	G	13:48	3-5	1-2	0-0	0	0	0	1	0	7	0	0	1	0	0	7
10	Nick Honor	G	17:15	0-2	0-2	4-4	1	0	1	1	2	4	2	0	1	0	0	9
35	Noah Carter		04:46	1-3	0-1	1-2	0	0	0	2	1	3	1	0	0	0	0	-8
55	Sean East II		06:07	0-0	0-0	0-0	0	0	0	0	1	0	0	1	0	0	0	-7
4	DeAndre Gholston		14:44	2-4	1-1	7-8	0	0	0	0	5	12	1	0	0	0	0	1
23	Aidan Shaw		01:14	0-0	0-0	0-0	0	0	0	1	0	0	0	0	0	0	0	-1
12	Jackson Francois		00:10	0-0	0-0	0-0	0	0	0	0	0	0	0	0	0	0	0	-2
31	Ben Sternberg		00:10	0-0	0-0	1-2	0	0	0	0	1	1	0	0	0	0	0	-2
Team							2	2	4			0		1				
<b>Totals</b>				12-24	4-11	19-22	4	7	11	11	13	47	8	3	5	2	1	2

Shooting By Period		
2 <sup>nd</sup> FG%	12-24	50.0%
3PT%	4-11	36.4%
FT%	19-22	86.4%
GM FG%	12-24	50.0%
3PT%	4-11	36.4%
FT%	19-22	86.4%

Dead Ball Rebounds: 2, 0

Technical Fouls::NONE

	UKY	MIZ
Biggest lead	0 (1 <sup>st</sup> 20:00)	21 (2 <sup>nd</sup> 4:07)
Best Scoring Run	7(2 <sup>nd</sup> 13:55)	8(2 <sup>nd</sup> 11:19)
Lead Changes	0	
Times Tied	0	
Time with Lead	00:00	19:45

Points from	UKY	MIZ
Turnovers	6	10
Paint	16	16
Second Chance	10	7
Fast Breaks	8	7
Bench	8	16

	Period by Period Scoring		
	1st	2nd	TOT
UKY	30	45	75
MIZ	42	47	89



**Kentucky at Missouri**

12/28/22 Mizzou Arena, Columbia  
2022-23 Men's Basketball

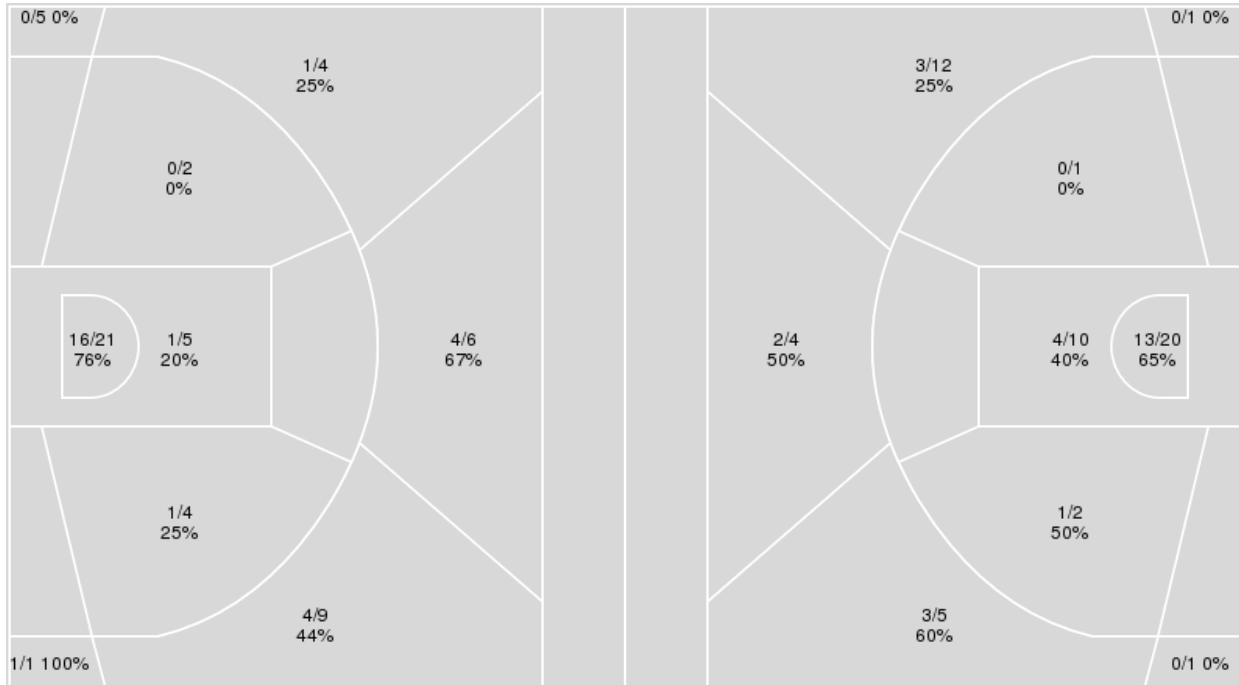
Officials: Tony Greene, Rob Rorke, Keith Kimble

{ Players => All; } FG Types => All; Results => All;

{ Players => All; } FG Types => All; Results => All;

**Missouri**

**Kentucky**



Missouri	M/A	%
Field Goals	28/57	49
2 Points	18/32	56
3 Points	10/25	40
Free Throws	23/28	82

Kentucky	M/A	%
Field Goals	26/56	46
2 Points	18/33	55
3 Points	8/23	35
Free Throws	15/24	62



**Kentucky at Missouri**

12/28/22 Mizzou Arena, Columbia  
2022-23 Men's Basketball

Game Time: 6:00 PM  
Game Duration: 2:19  
Attendance: 15,061

Officials: Tony Greene, Rob Rorke, Keith Kimble

**Kentucky**

No	Name	Mins		Score		Points Diff		Points per Min		Assists		Rebounds		Steals		Turnovers	
		On	Off	On	Off	On	Off	On	Off	On	Off	On	Off	On	Off	On	Off
0	Jacob Toppin	12:34	27:26	16 - 26	59 - 63	-10	-4	1.27	2.15	3	12	11	26	3	2	8	6
1	CJ Fredrick	03:30	36:30	3 - 7	72 - 82	-4	-10	0.86	1.97	1	14	3	34	1	4	2	12
2	Sahvir Wheeler	38:01	01:59	72 - 82	3 - 7	-10	-4	1.89	1.51	15	0	36	1	5	0	12	2
3	Adou Thiero	16:53	23:07	43 - 40	32 - 49	3	-17	2.55	1.38	9	6	13	24	2	3	4	10
12	Antonio Reeves	15:25	24:35	27 - 29	48 - 60	-2	-12	1.75	1.95	5	10	22	15	2	3	8	6
22	Cason Wallace	32:15	07:45	63 - 71	12 - 18	-8	-6	1.95	1.55	11	4	29	8	5	0	10	4
24	Chris Livingston	11:46	28:14	16 - 34	59 - 55	-18	4	1.36	2.09	4	11	7	30	0	5	5	9
34	Oscar Tshiebwe	40:00	00:00	75 - 89	0 - 0	-14	0	1.88	0.00	15	0	37	0	5	0	14	0
55	Lance Ware	29:36	10:24	60 - 67	15 - 22	-7	-7	2.03	1.44	12	3	27	10	2	3	7	7

**Missouri**

No	Name	Mins		Score		Points Diff		Points per Min		Assists		Rebounds		Steals		Turnovers	
		On	Off	On	Off	On	Off	On	Off	On	Off	On	Off	On	Off	On	Off
2	Tre Gomillion	19:47	20:13	46 - 31	43 - 44	15	-1	2.33	2.13	12	6	18	10	6	3	4	4
4	DeAndre Gholston	19:19	20:41	39 - 38	50 - 37	1	13	2.02	2.42	7	11	10	18	6	3	8	0
5	D'Moi Hodge	31:29	08:31	75 - 56	14 - 19	19	-5	2.38	1.64	17	1	23	5	6	3	4	4
10	Nick Honor	35:09	04:51	85 - 61	4 - 14	24	-10	2.42	0.82	18	0	26	2	7	2	3	5
12	Jackson Francois	00:10	39:50	1 - 3	88 - 72	-2	16	6.00	2.21	0	18	0	28	0	9	0	8
13	Ronnie DeGray III	16:31	23:29	33 - 39	56 - 36	-6	20	2.00	2.38	5	13	9	19	2	7	3	5
23	Aidan Shaw	08:28	31:32	17 - 17	72 - 58	0	14	2.01	2.28	2	16	4	24	2	7	1	7
24	Kobe Brown	34:31	05:29	78 - 60	11 - 15	18	-4	2.26	2.01	16	2	24	4	7	2	8	0
31	Ben Sternberg	00:10	39:50	1 - 3	88 - 72	-2	16	6.00	2.21	0	18	0	28	0	9	0	8
35	Noah Carter	14:56	25:04	33 - 25	56 - 50	8	6	2.21	2.23	8	10	15	13	4	5	3	5
55	Sean East II	19:30	20:30	37 - 42	52 - 33	-5	19	1.90	2.54	5	13	11	17	5	4	6	2





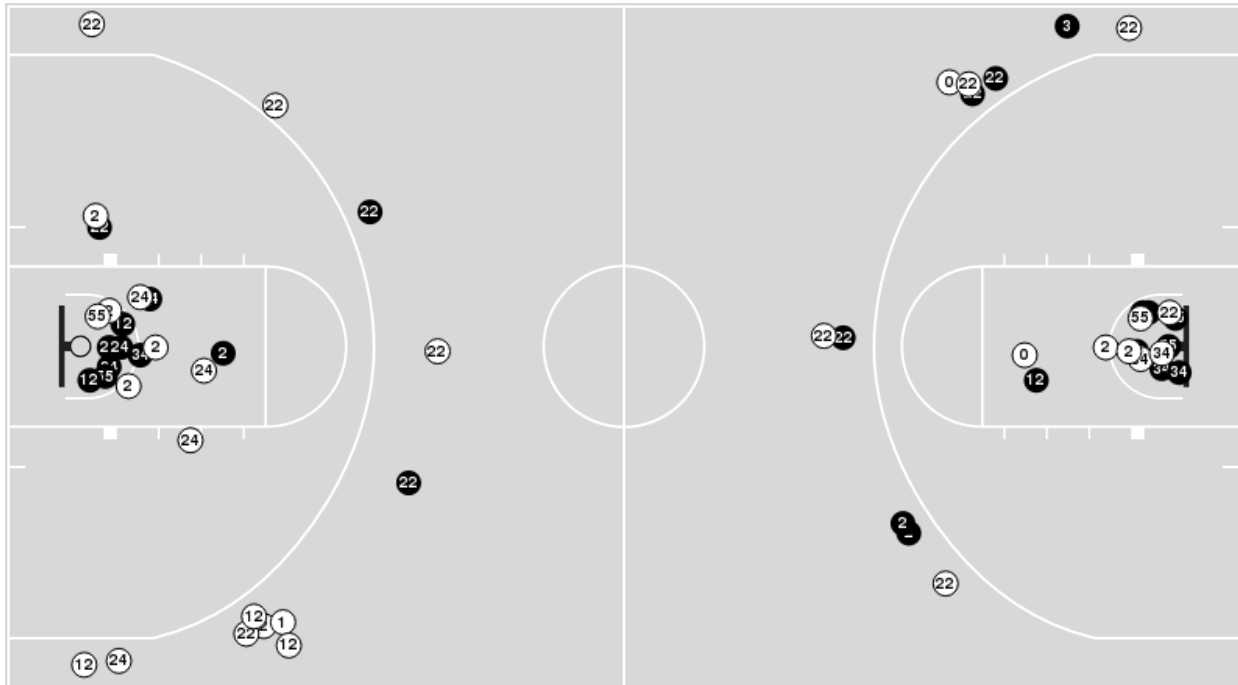
**Kentucky at Missouri**

12/28/22 Mizzou Arena, Columbia  
2022-23 Men's Basketball

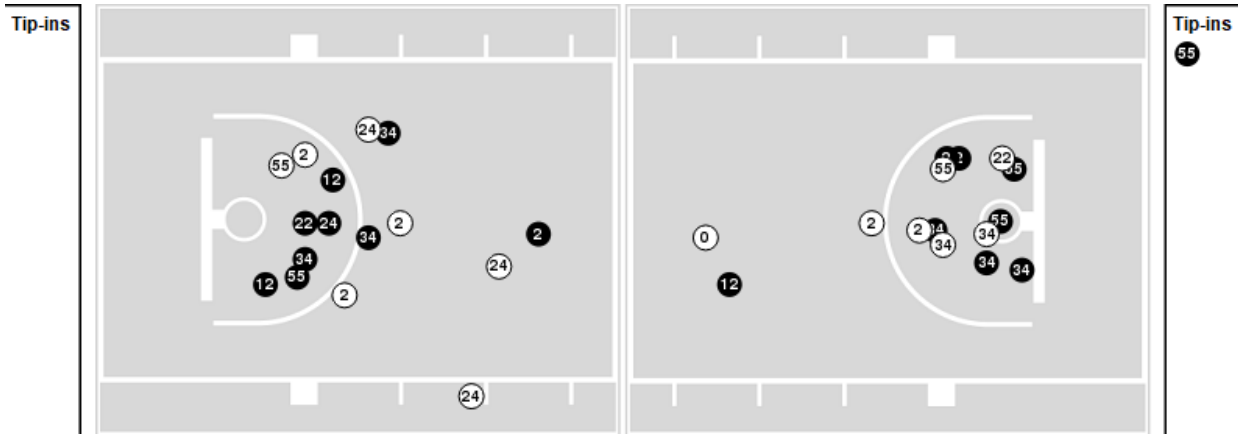
Players => AllFG Types=>AllResults=>All

**Kentucky**

**All Field Goals**



**Blow Up Chart**



● Made    ○ Missed    N - Player Number

Kentucky	M/A	%
Field Goals	26/56	46
2 Points	18/33	55
3 Points	8/23	35
Free Throws	15/24	62

Kentucky	M/A	%
Points in the Paint	34 (17 / 30)	57
Fast Break Points	8 (6/8)	75
Second Chance Points	17 (12/19)	63
Effective FG%	54	



**Kentucky at Missouri**

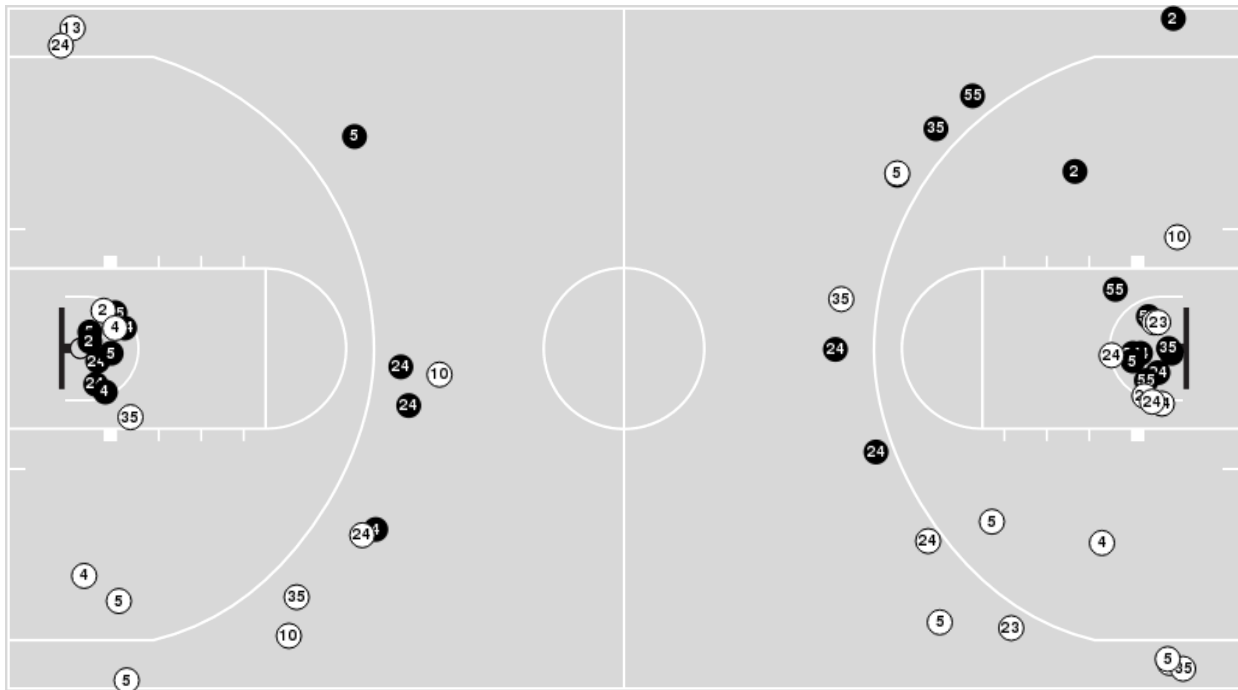
12/28/22 Mizzou Arena, Columbia  
2022-23 Men's Basketball

Officials: Tony Greene, Rob Rorke, Keith Kimble

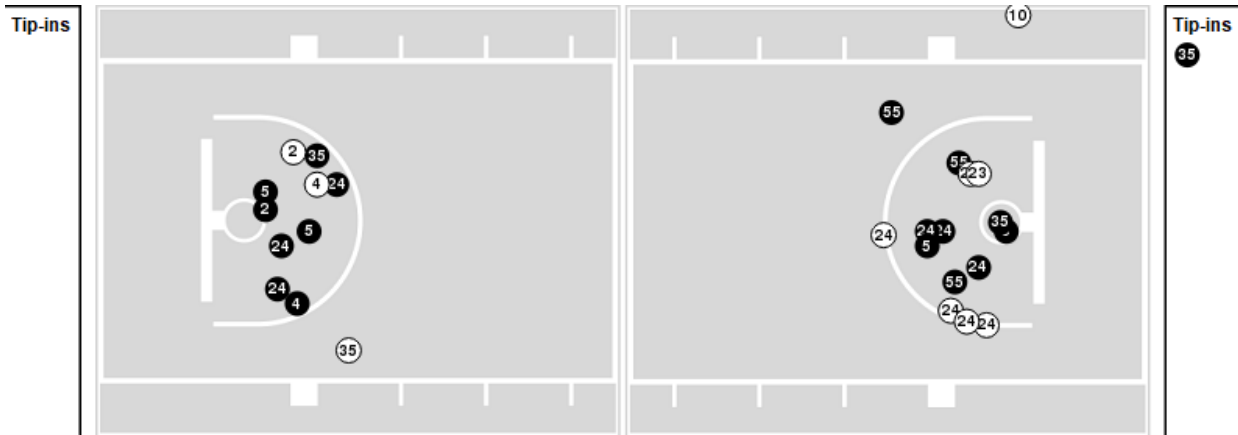
Players => AllFG Types=>AllResults=>All

**Missouri**

**All Field Goals**



**Blow Up Chart**



● Made    ○ Missed    N - Player Number

Missouri	M/A	%
Field Goals	28/57	49
2 Points	18/32	56
3 Points	10/25	40
Free Throws	23/28	82

Missouri	M/A	%
Points in the Paint	34 (17 / 26)	65
Fast Break Points	17 (10/12)	83
Second Chance Points	11 (7/11)	64
Effective FG%	58	



**Kentucky at Missouri**

12/28/22 Mizzou Arena, Columbia  
2022-23 Men's Basketball

**Game Time:** 6:00 PM  
**Game Duration:** 2:19  
**Attendance:** 15,061

**Officials:** Tony Greene, Rob Rorke, Keith Kimble

**Kentucky**

Lineup	Quarter On	Time On	Quarter Off	Time Off	Time on Court	Score	Score Diff	Reb	Stl	Tov	Ass	PPP
2- Wheeler S/ 22- Wallace C/ 24- Livingston C/ 34- Tshiebwe O/ 55- Ware L/	1	20:00	1	15:19	04:41	5-12	-7	2	0	0	0	0.7143
0- Toppin J/ 2- Wheeler S/ 12- Reeves A/ 22- Wallace C/ 34- Tshiebwe O/	1	15:19	1	11:17	04:02	5-5	0	7	2	3	0	0.6345
0- Toppin J/ 1- Fredrick C/ 2- Wheeler S/ 22- Wallace C/ 34- Tshiebwe O/	1	11:17	1	10:05	01:12	3-2	1	1	1	0	1	1.5000
0- Toppin J/ 1- Fredrick C/ 22- Wallace C/ 24- Livingston C/ 34- Tshiebwe O/	1	10:05	1	08:57	01:08	0-4	-4	0	0	1	0	0.0000
0- Toppin J/ 1- Fredrick C/ 2- Wheeler S/ 12- Reeves A/ 34- Tshiebwe O/	1	08:57	1	08:20	00:37	0-1	-1	0	0	1	0	0.0000
1- Fredrick C/ 2- Wheeler S/ 12- Reeves A/ 34- Tshiebwe O/ 55- Ware L/	1	08:20	1	07:47	00:33	0-0	0	2	0	0	0	0.0000
2- Wheeler S/ 12- Reeves A/ 22- Wallace C/ 34- Tshiebwe O/ 55- Ware L/	1	07:47	1	05:22	02:25	6-3	3	3	0	0	1	1.3889
2- Wheeler S/ 12- Reeves A/ 24- Livingston C/ 34- Tshiebwe O/ 55- Ware L/	1	05:22	1	02:39	02:43	7-11	-4	2	0	1	3	1.0870
0- Toppin J/ 2- Wheeler S/ 12- Reeves A/ 34- Tshiebwe O/ 55- Ware L/	1	02:39	1	01:42	00:57	0-2	-2	0	0	1	0	0.0000
2- Wheeler S/ 12- Reeves A/ 24- Livingston C/ 34- Tshiebwe O/ 55- Ware L/	1	01:42	2	20:00	01:42	4-2	2	3	0	1	1	1.3333
2- Wheeler S/ 22- Wallace C/ 24- Livingston C/ 34- Tshiebwe O/ 55- Ware L/	2	20:00	2	18:28	01:32	0-5	-5	0	0	2	0	0.0000
2- Wheeler S/ 12- Reeves A/ 22- Wallace C/ 34- Tshiebwe O/ 55- Ware L/	2	18:28	2	18:06	00:22	1-0	1	3	0	0	0	3.1250
0- Toppin J/ 2- Wheeler S/ 12- Reeves A/ 34- Tshiebwe O/ 55- Ware L/	2	18:06	2	16:53	01:13	1-2	-1	1	0	0	0	0.4098
2- Wheeler S/ 3- Thiero A/ 22- Wallace C/ 34- Tshiebwe O/ 55- Ware L/	2	16:53	2	11:50	05:03	15-12	3	6	1	1	2	1.8293
0- Toppin J/ 2- Wheeler S/ 3- Thiero A/ 22- Wallace C/ 34- Tshiebwe O/	2	11:50	2	08:25	03:25	7-10	-3	2	0	2	2	1.1905
2- Wheeler S/ 3- Thiero A/ 22- Wallace C/ 34- Tshiebwe O/ 55- Ware L/	2	08:25	2	00:51	07:34	18-15	3	4	1	0	5	1.7647
3- Thiero A/ 12- Reeves A/ 22- Wallace C/ 34- Tshiebwe O/ 55- Ware L/	2	00:51	2	00:00	00:51	3-3	0	1	0	1	0	1.0417



**Kentucky at Missouri**

12/28/22 Mizzou Arena, Columbia  
2022-23 Men's Basketball

**Game Time:** 6:00 PM  
**Game Duration:** 2:19  
**Attendance:** 15,061

**Officials:** Tony Greene, Rob Rorke, Keith Kimble

**Missouri**

Lineup	Quarter On	Time On	Quarter Off	Time Off	Time on Court	Score	Score Diff	Reb	Stl	Tov	Ass	PPP
2- Gomillion T/ 5- Hodge D/ 10- Honor N/ 13- DeGray III R/ 24- Brown K/	1	20:00	1	17:11	02:49	8-5	3	3	0	0	3	2.0000
2- Gomillion T/ 5- Hodge D/ 10- Honor N/ 24- Brown K/ 35- Carter N/	1	17:11	1	15:19	01:52	4-0	4	3	0	0	2	1.3333
4- Gholston D/ 5- Hodge D/ 10- Honor N/ 24- Brown K/ 35- Carter N/	1	15:19	1	14:35	00:44	5-2	3	0	0	0	1	2.5000
4- Gholston D/ 10- Honor N/ 13- DeGray III R/ 24- Brown K/ 35- Carter N/	1	14:35	1	14:14	00:21	0-0	0	0	0	0	0	0.0000
4- Gholston D/ 5- Hodge D/ 10- Honor N/ 13- DeGray III R/ 24- Brown K/	1	14:14	1	13:23	00:51	0-0	0	1	0	0	0	0.0000
4- Gholston D/ 5- Hodge D/ 13- DeGray III R/ 24- Brown K/ 55- East II S/	1	13:23	1	12:42	00:41	0-3	-3	0	0	2	0	0.0000
2- Gomillion T/ 4- Gholston D/ 24- Brown K/ 35- Carter N/ 55- East II S/	1	12:42	1	11:17	01:25	0-0	0	2	2	2	0	0.0000
4- Gholston D/ 10- Honor N/ 24- Brown K/ 35- Carter N/ 55- East II S/	1	11:17	1	10:44	00:33	0-0	0	1	0	1	0	0.0000
5- Hodge D/ 10- Honor N/ 24- Brown K/ 35- Carter N/ 55- East II S/	1	10:44	1	10:05	00:39	2-3	-1	0	0	0	1	1.0000
5- Hodge D/ 10- Honor N/ 23- Shaw A/ 35- Carter N/ 55- East II S/	1	10:05	1	08:20	01:45	5-0	5	3	2	0	1	2.1552
5- Hodge D/ 10- Honor N/ 23- Shaw A/ 24- Brown K/ 55- East II S/	1	08:20	1	04:21	03:59	8-10	-2	1	0	0	1	1.2422
5- Hodge D/ 10- Honor N/ 24- Brown K/ 35- Carter N/ 55- East II S/	1	04:21	1	01:30	02:51	8-3	5	3	0	0	1	1.6000
5- Hodge D/ 10- Honor N/ 23- Shaw A/ 24- Brown K/ 55- East II S/	1	01:30	1	00:58	00:31	2-2	0	0	0	0	0	1.3889
5- Hodge D/ 10- Honor N/ 13- DeGray III R/ 23- Shaw A/ 55- East II S/	1	00:58	2	20:00	00:59	0-2	-2	0	0	0	0	0.0000
2- Gomillion T/ 5- Hodge D/ 10- Honor N/ 13- DeGray III R/ 24- Brown K/	2	20:00	2	18:09	01:51	5-0	5	2	1	0	0	1.4535
2- Gomillion T/ 5- Hodge D/ 10- Honor N/ 24- Brown K/ 35- Carter N/	2	18:09	2	16:53	01:16	2-2	0	2	0	0	1	0.8197
2- Gomillion T/ 5- Hodge D/ 10- Honor N/ 13- DeGray III R/ 35- Carter N/	2	16:53	2	16:44	00:09	1-1	0	0	0	0	0	2.2727
5- Hodge D/ 10- Honor N/ 13- DeGray III R/ 35- Carter N/ 55- East II S/	2	16:44	2	14:54	01:50	4-6	-2	1	0	0	1	1.3333
4- Gholston D/ 5- Hodge D/ 13- DeGray III R/ 35- Carter N/ 55- East II S/	2	14:54	2	14:18	00:36	0-3	-3	0	0	0	0	0.0000
4- Gholston D/ 5- Hodge D/ 24- Brown K/ 35- Carter N/ 55- East II S/	2	14:18	2	13:33	00:45	1-2	-1	0	0	0	0	0.6944
4- Gholston D/ 5- Hodge D/ 23- Shaw A/ 24- Brown K/ 55- East II S/	2	13:33	2	12:19	01:14	2-3	-1	0	0	1	0	1.0638
2- Gomillion T/ 4- Gholston D/ 5- Hodge D/ 10- Honor N/ 24- Brown K/	2	12:19	2	08:25	03:54	14-7	7	3	3	0	4	2.2152
4- Gholston D/ 5- Hodge D/ 10- Honor N/ 13- DeGray III R/ 24- Brown K/	2	08:25	2	08:01	00:24	1-0	1	0	0	0	0	2.2727
2- Gomillion T/ 4- Gholston D/ 10- Honor N/ 13- DeGray III R/ 24- Brown K/	2	08:01	2	04:28	03:33	9-9	0	2	0	1	1	1.5957
2- Gomillion T/ 4- Gholston D/ 5- Hodge D/ 10- Honor N/ 24- Brown K/	2	04:28	2	02:39	01:49	3-2	1	1	0	1	1	1.0000
2- Gomillion T/ 4- Gholston D/ 10- Honor N/ 13- DeGray III R/ 24- Brown K/	2	02:39	2	01:42	00:57	0-5	-5	0	0	0	0	0.0000
4- Gholston D/ 10- Honor N/ 13- DeGray III R/ 24- Brown K/ 55- East II S/	2	01:42	2	01:03	00:39	2-2	0	0	0	0	0	2.2727
2- Gomillion T/ 4- Gholston D/ 10- Honor N/ 24- Brown K/ 55- East II S/	2	01:03	2	00:51	00:12	0-0	0	0	0	0	0	0.0000
4- Gholston D/ 10- Honor N/ 13- DeGray III R/ 24- Brown K/ 55- East II S/	2	00:51	2	00:09	00:41	2-0	2	0	1	0	0	1.0638
12- Francois J/ 13- DeGray III R/ 31- Sternberg B/ 35- Carter N/ 55- East II S/	2	00:09	2	00:00	00:10	1-3	-2	0	0	0	0	1.1364



**Kentucky at Missouri**

12/28/22 Mizzou Arena, Columbia  
2022-23 Men's Basketball

**Game Time:** 6:00 PM  
**Game Duration:** 2:19  
**Attendance:** 15,061

**Officials:** Tony Greene, Rob Rorke, Keith Kimble

**Kentucky**

Lineup	Time	Score	Score Diff	Pts/Min	Reb	Stl	Tov	Ass	PPP
2- Wheeler S/ 3- Thiero A/ 22- Wallace C/ 34- Tshiebwe O/ 55- Ware L/	12:37	33-27	6	2.6156	10	2	1	7	1.7935
2- Wheeler S/ 22- Wallace C/ 24- Livingston C/ 34- Tshiebwe O/ 55- Ware L/	06:13	5-17	-12	0.8043	2	0	2	0	0.5556
2- Wheeler S/ 12- Reeves A/ 24- Livingston C/ 34- Tshiebwe O/ 55- Ware L/	04:25	11-13	-2	2.4906	5	0	2	4	1.1653
0- Toppin J/ 2- Wheeler S/ 12- Reeves A/ 22- Wallace C/ 34- Tshiebwe O/	04:02	5-5	0	1.2397	7	2	3	0	0.6345
0- Toppin J/ 2- Wheeler S/ 3- Thiero A/ 22- Wallace C/ 34- Tshiebwe O/	03:25	7-10	-3	2.0488	2	0	2	2	1.1905
2- Wheeler S/ 12- Reeves A/ 22- Wallace C/ 34- Tshiebwe O/ 55- Ware L/	02:47	7-3	4	2.5150	6	0	0	1	1.5086
0- Toppin J/ 2- Wheeler S/ 12- Reeves A/ 34- Tshiebwe O/ 55- Ware L/	02:10	1-4	-3	0.4615	1	0	1	0	0.2907
0- Toppin J/ 1- Fredrick C/ 2- Wheeler S/ 22- Wallace C/ 34- Tshiebwe O/	01:12	3-2	1	2.5000	1	1	0	1	1.5000
0- Toppin J/ 1- Fredrick C/ 22- Wallace C/ 24- Livingston C/ 34- Tshiebwe O/	01:08	0-4	-4	0.0000	0	0	1	0	0.0000
3- Thiero A/ 12- Reeves A/ 22- Wallace C/ 34- Tshiebwe O/ 55- Ware L/	00:51	3-3	0	3.5294	1	0	1	0	1.0417
0- Toppin J/ 1- Fredrick C/ 2- Wheeler S/ 12- Reeves A/ 34- Tshiebwe O/	00:37	0-1	-1	0.0000	0	0	1	0	0.0000
1- Fredrick C/ 2- Wheeler S/ 12- Reeves A/ 34- Tshiebwe O/ 55- Ware L/	00:33	0-0	0	0.0000	2	0	0	0	0.0000



**Kentucky at Missouri**

12/28/22 Mizzou Arena, Columbia  
2022-23 Men's Basketball

**Game Time:** 6:00 PM  
**Game Duration:** 2:19  
**Attendance:** 15,061

**Officials:** Tony Greene, Rob Rorke, Keith Kimble

**Missouri**

Lineup	Time	Score	Score Diff	Pts/Min	Reb	Stl	Tov	Ass	PPP
2- Gomillion T/ 4- Gholston D/ 5- Hodge D/ 10- Honor N/ 24- Brown K/	05:43	17-9	8	2.9738	4	3	1	5	1.8240
2- Gomillion T/ 5- Hodge D/ 10- Honor N/ 13- DeGray III R/ 24- Brown K/	04:40	13-5	8	2.7857	5	1	0	3	1.7473
5- Hodge D/ 10- Honor N/ 23- Shaw A/ 24- Brown K/ 55- East II S/	04:30	10-12	-2	2.2222	1	0	0	1	1.2690
2- Gomillion T/ 4- Gholston D/ 10- Honor N/ 13- DeGray III R/ 24- Brown K/	04:30	9-14	-5	2.0000	2	0	1	1	1.3554
5- Hodge D/ 10- Honor N/ 24- Brown K/ 35- Carter N/ 55- East II S/	03:30	10-6	4	2.8571	3	0	0	2	1.4286
2- Gomillion T/ 5- Hodge D/ 10- Honor N/ 24- Brown K/ 35- Carter N/	03:08	6-2	4	1.9149	5	0	0	3	1.1029
5- Hodge D/ 10- Honor N/ 13- DeGray III R/ 35- Carter N/ 55- East II S/	01:50	4-6	-2	2.1818	1	0	0	1	1.3333
5- Hodge D/ 10- Honor N/ 23- Shaw A/ 35- Carter N/ 55- East II S/	01:45	5-0	5	2.8571	3	2	0	1	2.1552
2- Gomillion T/ 4- Gholston D/ 24- Brown K/ 35- Carter N/ 55- East II S/	01:25	0-0	0	0.0000	2	2	2	0	0.0000
4- Gholston D/ 10- Honor N/ 13- DeGray III R/ 24- Brown K/ 55- East II S/	01:20	4-2	2	3.0000	0	1	0	0	1.4493
4- Gholston D/ 5- Hodge D/ 10- Honor N/ 13- DeGray III R/ 24- Brown K/	01:15	1-0	1	0.8000	1	0	0	0	0.6944
4- Gholston D/ 5- Hodge D/ 23- Shaw A/ 24- Brown K/ 55- East II S/	01:14	2-3	-1	1.6216	0	0	1	0	1.0638
5- Hodge D/ 10- Honor N/ 13- DeGray III R/ 23- Shaw A/ 55- East II S/	00:59	0-2	-2	0.0000	0	0	0	0	0.0000
4- Gholston D/ 5- Hodge D/ 24- Brown K/ 35- Carter N/ 55- East II S/	00:45	1-2	-1	1.3333	0	0	0	0	0.6944
4- Gholston D/ 5- Hodge D/ 10- Honor N/ 24- Brown K/ 35- Carter N/	00:44	5-2	3	6.8182	0	0	0	1	2.5000
4- Gholston D/ 5- Hodge D/ 13- DeGray III R/ 24- Brown K/ 55- East II S/	00:41	0-3	-3	0.0000	0	0	2	0	0.0000
4- Gholston D/ 5- Hodge D/ 13- DeGray III R/ 35- Carter N/ 55- East II S/	00:36	0-3	-3	0.0000	0	0	0	0	0.0000
4- Gholston D/ 10- Honor N/ 24- Brown K/ 35- Carter N/ 55- East II S/	00:33	0-0	0	0.0000	1	0	1	0	0.0000
4- Gholston D/ 10- Honor N/ 13- DeGray III R/ 24- Brown K/ 35- Carter N/	00:21	0-0	0	0.0000	0	0	0	0	0.0000
2- Gomillion T/ 4- Gholston D/ 10- Honor N/ 24- Brown K/ 55- East II S/	00:12	0-0	0	0.0000	0	0	0	0	0.0000
12- Francois J/ 13- DeGray III R/ 31- Sternberg B/ 35- Carter N/ 55- East II S/	00:10	1-3	-2	6.0000	0	0	0	0	1.1364
2- Gomillion T/ 5- Hodge D/ 10- Honor N/ 13- DeGray III R/ 35- Carter N/	00:09	1-1	0	6.6667	0	0	0	0	2.2727