



Kentucky at Kansas St.

03/19/23 Greensboro Coliseum, Greensboro, NC
2023 NCAA Men's Basketball Championship Second Round

Game Time: 2:40 PM
Game Duration: 2:16
Attendance: 16,517

Officials: Jeffery Clark, Gerry Pollard, Kenneth Burdett

Kentucky - 69

Record: 22-12

NO.	Name	F	Min	FG	3P	FT	Rebounds			Fouls		TP	AS	TO	ST	Blocks		+/-
				M-A	M-A	M-A	OR	DR	TOT	PF	FD					BS	BA	
0	Jacob Toppin	F	27:45	1-7	0-2	0-0	1	3	4	5	1	2	3	2	0	0	0	4
24	Chris Livingston	F	37:39	5-13	1-4	0-2	5	2	7	0	2	11	2	2	1	1	1	-12
34	Oscar Tshiebwe	F	37:03	8-13	0-0	9-11	9	9	18	1	10	25	1	5	2	0	2	-1
12	Antonio Reeves	G	30:26	1-15	1-10	2-2	0	3	3	3	1	5	2	1	1	0	1	-1
22	Cason Wallace	G	33:34	9-11	1-1	2-2	2	7	9	5	3	21	4	5	2	0	0	1
1	CJ Fredrick		20:07	1-3	1-3	0-0	0	1	1	2	0	3	0	0	0	0	0	-6
4	Daimion Collins		02:56	0-0	0-0	0-0	0	0	0	0	0	0	0	0	0	0	0	-4
55	Lance Ware		09:11	1-1	0-0	0-0	0	0	0	0	0	2	0	1	0	0	0	-6
3	Adou Thiero		01:19	0-0	0-0	0-0	0	0	0	1	0	0	0	0	0	0	0	-5
Team							2	0	2			0		0				
Totals				26-63	4-20	13-17	19	25	44	17	17	69	12	16	6	1	4	-6

Shooting By Period		
1 st FG%	10-34	29.4%
3PT%	2-11	18.2%
FT%	4-5	80%
2 nd FG%	16-29	55.2%
3PT%	2-9	22.2%
FT%	9-12	75%
GM FG%	26-63	41.3%
3PT%	4-20	20.0%
FT%	13-17	76.5%

Dead Ball Rebounds: 1, 1

Technical Fouls::NONE

Kansas St. - 75

Record: 25-9

NO.	Name	F	Min	FG	3P	FT	Rebounds			Fouls		TP	AS	TO	ST	Blocks		+/-
				M-A	M-A	M-A	OR	DR	TOT	PF	FD					BS	BA	
11	Keyontae Johnson	F	38:56	5-14	1-4	2-2	0	4	4	2	2	13	3	3	1	0	0	8
35	Nae'Qwan Tomlin	F	30:12	6-8	0-2	0-2	3	3	6	3	1	12	0	1	2	4	0	-6
1	Markquis Nowell	G	39:44	7-14	3-8	10-11	0	2	2	1	6	27	9	4	3	0	1	6
5	Cam Carter	G	18:51	2-6	0-3	0-0	0	3	3	2	1	4	0	0	1	0	0	-8
13	Desi Sills	G	28:39	3-5	0-1	6-7	0	4	4	2	5	12	0	0	1	0	0	10
3	David N'Guessan		23:33	2-4	0-1	0-0	1	3	4	5	1	4	0	0	3	0	0	5
23	Abayomi Iyiola		01:03	0-0	0-0	0-0	0	0	0	1	0	0	0	0	0	0	0	-1
25	Ismael Massoud		15:50	1-2	1-1	0-0	0	0	0	1	1	3	2	0	0	0	0	13
4	Tykei Greene		03:12	0-1	0-1	0-0	0	0	0	0	0	0	0	0	0	0	0	3
Team							0	2	2			0		0				
Totals				26-54	5-21	18-22	4	21	25	17	17	75	14	8	11	4	1	6

Shooting By Period		
1 st FG%	12-29	41.4%
3PT%	0-12	0.0%
FT%	5-8	62.5%
2 nd FG%	14-25	56.0%
3PT%	5-9	55.6%
FT%	13-14	92.9%
GM FG%	26-54	48.1%
3PT%	5-21	23.8%
FT%	18-22	81.8%

Dead Ball Rebounds: 2, 0

Technical Fouls::NONE

	UK	KSU
Biggest lead	8 (1 st 11:28)	7 (2 nd 0:37)
Best Scoring Run	13(2 nd 16:21)	8(2 nd 14:32)
Lead Changes	12	
Times Tied	12	
Time with Lead	23:41	09:44

Points from	UK	KSU
Turnovers	15	14
Paint	40	40
Second Chance	17	7
Fast Breaks	8	20
Bench	5	7

	Period by Period Scoring		
	1st	2nd	TOT
UK	26	43	69
KSU	29	46	75



Officials: Jeffery Clark, Gerry Pollard, Kenneth Burdett

Period 1

Quarter Starters:

KSU	1 Nowell M	5 Carter C	11 Johnson K	13 Sills D	35 Tomlin N
UK	0 Toppin J	12 Reeves A	22 Wallace C	24 Livingston C	34 Tshiebwe O

Game Time	KSU	Score	Diff	UK
20:00	35 TOMLIN N jumpball lost			34 TSHIEBWE O jumpball won
19:47				12 REEVES A 3pt FG , jump shot missed
19:43				34 TSHIEBWE O offensive rebound (1)
19:42				34 TSHIEBWE O 2pt FG second chance in the paint, layup blocked
19:42	35 TOMLIN N block (1)			
19:37				22 WALLACE C offensive rebound (1)
19:33				12 REEVES A 3pt FG second chance, jump shot missed
19:30				34 TSHIEBWE O offensive rebound (2)
19:19	1 NOWELL M steal (1)			22 WALLACE C turnover lost ball (1)
19:08	5 CARTER C 3pt FG from turnover, jump shot missed			
19:06				22 WALLACE C defensive rebound (2)
19:03				0 TOPPIN J 3pt FG , jump shot missed
19:01	5 CARTER C defensive rebound (1)			
18:57	5 CARTER C 2pt FG fast break in the paint, layup made (2)	2-0	2	
18:37		2-2	0	34 TSHIEBWE O 2pt FG in the paint, layup made (2)
18:37				12 REEVES A assist (1)
18:22	11 JOHNSON K 3pt FG , jump shot missed			
18:19				34 TSHIEBWE O defensive rebound (3)
17:59	35 TOMLIN N steal (1)			22 WALLACE C turnover bad pass (2)
17:55	11 JOHNSON K 2pt FG from turnover in the paint, layup missed			
17:51				34 TSHIEBWE O defensive rebound (4)
17:37	13 SILLS D steal (1)			34 TSHIEBWE O turnover bad pass (1)
17:32	13 SILLS D foul drawn (1)			22 WALLACE C foul shooting (1 - 1)
17:32	13 SILLS D free throw fast break 1 - 2 missed			
17:32	offensive dead ball rebound (1)			
17:32	35 TOMLIN N substitution out			
17:32	3 N'GUESSAN D substitution in			
17:32	13 SILLS D free throw fast break 2 - 2 made (1)	3-2	1	
17:16		3-4	-1	0 TOPPIN J 2pt FG in the paint, dunk, made (2)
17:16				34 TSHIEBWE O assist (1)
17:00	5 CARTER C 3pt FG , step back jump shot missed			
16:56				24 LIVINGSTON C defensive rebound (1)
16:46				12 REEVES A 3pt FG , jump shot missed
16:42				34 TSHIEBWE O offensive rebound (5)
16:40		3-6	-3	34 TSHIEBWE O 2pt FG second chance in the paint, layup made (4)
16:30	5 CARTER C 2pt FG outside the paint, jump shot missed			
16:28				22 WALLACE C defensive rebound (3)
16:26				12 REEVES A 2pt FG in the paint, pull up jump shot missed
16:22	3 N'GUESSAN D defensive rebound (1)			
16:22	3 N'GUESSAN D foul drawn (1)			34 TSHIEBWE O foul personal (1 - 2)
16:22	5 CARTER C substitution out			
16:22	35 TOMLIN N substitution in			



Officials: Jeffery Clark, Gerry Pollard, Kenneth Burdett

Game Time	KSU	Score	Diff	UK
15:56	1 NOWELL M 3pt FG , jump shot missed			
15:56				12 REEVES A defensive rebound (1)
15:51				12 REEVES A 2pt FG outside the paint, floating jump shot missed
15:50	3 N'GUESSAN D defensive rebound (2)			
15:50	jump ball situation			
15:50	Timeout media			
15:32	35 TOMLIN N 3pt FG , jump shot missed			
15:29				0 TOPPIN J defensive rebound (1)
15:12				0 TOPPIN J 2pt FG outside the paint, pull up jump shot missed
15:09	13 SILLS D defensive rebound (1)			
14:58	11 JOHNSON K turnover dribbling violation (1)			
14:41				0 TOPPIN J turnover (1)
14:27	13 SILLS D 3pt FG from turnover, jump shot missed			
14:23				12 REEVES A defensive rebound (2)
14:04				22 WALLACE C turnover travel (3)
14:04	3 N'GUESSAN D substitution out			
14:04	23 IYIOLA A substitution in			
13:51	13 SILLS D 2pt FG from turnover in the paint, layup made (3)	5-6	-1	
13:51	1 NOWELL M assist (1)			
13:32				24 LIVINGSTON C 2pt FG in the paint, turnaround jump shot missed
13:29	35 TOMLIN N defensive rebound (1)			
13:22	1 NOWELL M turnover bad pass (1)			
13:22	13 SILLS D substitution out			
13:22	5 CARTER C substitution in			
13:22				24 LIVINGSTON C substitution out
13:22				1 FREDRICK C substitution in
13:01		5-8	-3	34 TSHIEBWE O 2pt FG from turnover in the paint, layup made (6)
13:01				22 WALLACE C assist (1)
13:01	23 IYIOLA A foul shooting (1 - 1)			34 TSHIEBWE O foul drawn (1)
13:01		5-9	-4	34 TSHIEBWE O free throw 1 - 1 made (7)
13:01	23 IYIOLA A substitution out			
13:01	25 MASSOUD I substitution in			
12:48	11 JOHNSON K foul drawn (1)			0 TOPPIN J foul personal (1 - 3)
12:46	35 TOMLIN N 2pt FG in the paint, layup made (2)	7-9	-2	
12:46	11 JOHNSON K assist (1)			
12:09		7-12	-5	22 WALLACE C 3pt FG , jump shot made (3)
11:53	1 NOWELL M 3pt FG , jump shot missed			
11:50	35 TOMLIN N offensive rebound (2)			
11:48	35 TOMLIN N 3pt FG second chance, jump shot missed			
11:46				0 TOPPIN J defensive rebound (2)
11:35				12 REEVES A 3pt FG , jump shot missed
11:32	35 TOMLIN N defensive rebound (3)			
11:31	35 TOMLIN N turnover bad pass (1)			22 WALLACE C steal (1)
11:28		7-14	-7	22 WALLACE C 2pt FG fast break from turnover in the paint, layup made (5)
11:28	35 TOMLIN N foul shooting (1 - 2)			22 WALLACE C foul drawn (1)
11:28	Timeout media			



Officials: Jeffery Clark, Gerry Pollard, Kenneth Burdett

Game Time	KSU	Score	Diff	UK
11:28	35 TOMLIN N substitution out			
11:28	3 N'GUESSAN D substitution in			
11:28				12 REEVES A substitution out
11:28				24 LIVINGSTON C substitution in
11:28		7-15	-8	22 WALLACE C free throw fast break 1 - 1 made (6)
11:07	25 MASSOUD I 2pt FG outside the paint, turnaround jump shot missed			
11:05				34 TSHIEBWE O defensive rebound (6)
10:53				22 WALLACE C 2pt FG outside the paint, jump shot missed
10:50	11 JOHNSON K defensive rebound (1)			
10:45	3 N'GUESSAN D 2pt FG fast break in the paint, layup made (2)	9-15	-6	
10:45	1 NOWELL M assist (2)			
10:27				0 TOPPIN J 2pt FG in the paint, driving layup missed
10:23	5 CARTER C defensive rebound (2)			
10:08	11 JOHNSON K 2pt FG in the paint, layup missed			
10:07				34 TSHIEBWE O defensive rebound (7)
09:59	jump ball situation			
09:59	1 NOWELL M substitution out			
09:59	13 SILLS D substitution in			
09:59				0 TOPPIN J substitution out
09:59				1 FREDRICK C substitution out
09:59				34 TSHIEBWE O substitution out
09:59				4 COLLINS D substitution in
09:59				12 REEVES A substitution in
09:59				55 WARE L substitution in
09:43	jump ball situation			
09:43	5 CARTER C steal (1)			22 WALLACE C turnover lost ball (4)
09:43	5 CARTER C substitution out			
09:43	1 NOWELL M substitution in			
09:43				22 WALLACE C substitution out
09:43				1 FREDRICK C substitution in
09:24	11 JOHNSON K turnover bad pass (2)			24 LIVINGSTON C steal (1)
08:58		9-17	-8	24 LIVINGSTON C 2pt FG from turnover in the paint, floating jump shot made (2)
08:30	11 JOHNSON K 2pt FG in the paint, driving layup made (2)	11-17	-6	
08:30	3 N'GUESSAN D substitution out			
08:30	11 JOHNSON K substitution out			
08:30	4 GREENE T substitution in			
08:30	35 TOMLIN N substitution in			
08:07				24 LIVINGSTON C 2pt FG in the paint, driving layup missed
08:04	13 SILLS D defensive rebound (2)			
07:58	13 SILLS D foul drawn (2)			1 FREDRICK C foul shooting (1 - 4)
07:58				Timeout media
07:58	25 MASSOUD I substitution out			
07:58	11 JOHNSON K substitution in			
07:58				4 COLLINS D substitution out
07:58				12 REEVES A substitution out
07:58				22 WALLACE C substitution in
07:58				34 TSHIEBWE O substitution in
07:58	13 SILLS D free throw 1 - 2 made (4)	12-17	-5	



Officials: Jeffery Clark, Gerry Pollard, Kenneth Burdett

Game Time	KSU	Score	Diff	UK
07:58	13 SILLS D free throw 2 - 2 made (5)	13-17	-4	
07:36				22 WALLACE C 2pt FG outside the paint, pull up jump shot missed
07:33	1 NOWELL M defensive rebound (1)			
07:29	13 SILLS D substitution out			
07:29	5 CARTER C substitution in			
07:29				55 WARE L substitution out
07:29				0 TOPPIN J substitution in
07:17	11 JOHNSON K 3pt FG , jump shot missed			
07:13	35 TOMLIN N offensive rebound (4)			
07:12	35 TOMLIN N 2pt FG second chance in the paint, layup made (4)	15-17	-2	
06:55	11 JOHNSON K foul personal (1 - 3)			34 TSHIEBWE O foul drawn (2)
06:47				34 TSHIEBWE O 2pt FG outside the paint, pull up jump shot missed
06:44	5 CARTER C defensive rebound (3)			
06:39	4 GREENE T 3pt FG , jump shot missed			
06:37				34 TSHIEBWE O defensive rebound (8)
06:29		15-20	-5	1 FREDRICK C 3pt FG , jump shot made (3)
06:29				22 WALLACE C assist (2)
06:19	5 CARTER C 2pt FG in the paint, layup made (4)	17-20	-3	
06:19	1 NOWELL M assist (3)			
05:54		17-22	-5	24 LIVINGSTON C 2pt FG in the paint, dunk, made (4)
05:54				0 TOPPIN J assist (1)
05:42	1 NOWELL M 2pt FG in the paint, driving layup made (2)	19-22	-3	
05:22				24 LIVINGSTON C 3pt FG , jump shot missed
05:18	defensive rebound (14)			
05:18	4 GREENE T substitution out			
05:18	3 N'GUESSAN D substitution in			
05:18				24 LIVINGSTON C substitution out
05:18				12 REEVES A substitution in
05:01	5 CARTER C 3pt FG , jump shot missed			
04:56				22 WALLACE C defensive rebound (4)
04:51				22 WALLACE C substitution out
04:51				24 LIVINGSTON C substitution in
04:31				0 TOPPIN J 3pt FG , jump shot missed
04:29				0 TOPPIN J offensive rebound (3)
04:22	3 N'GUESSAN D steal (1)			34 TSHIEBWE O turnover lost ball (2)
04:22	1 NOWELL M turnover lost ball (2)			12 REEVES A steal (1)
04:22	jump ball situation			
04:22				1 FREDRICK C substitution out
04:22				22 WALLACE C substitution in
04:10				12 REEVES A 2pt FG from turnover in the paint, driving layup blocked
04:10	35 TOMLIN N block (2)			
04:10				offensive rebound (19)
03:56	11 JOHNSON K foul personal (2 - 4)			34 TSHIEBWE O foul drawn (3)
03:56	Timeout media			
03:52	3 N'GUESSAN D steal (2)			34 TSHIEBWE O turnover bad pass (3)
03:48	5 CARTER C foul drawn (1)			22 WALLACE C foul personal (2 - 5)



Officials: Jeffery Clark, Gerry Pollard, Kenneth Burdett

Game Time	KSU	Score	Diff	UK
03:48				22 WALLACE C substitution out
03:48				1 FREDRICK C substitution in
03:33	11 JOHNSON K 3pt FG from turnover, jump shot missed			
03:30				12 REEVES A defensive rebound (3)
03:25				1 FREDRICK C 3pt FG , jump shot missed
03:22				24 LIVINGSTON C offensive rebound (2)
03:21				12 REEVES A 3pt FG second chance, jump shot missed
03:18	35 TOMLIN N defensive rebound (5)			
03:12	11 JOHNSON K 2pt FG fast break in the paint, dunk, made (4)	21-22	-1	
03:12	1 NOWELL M assist (4)			
02:57	3 N'GUESSAN D steal (3)			0 TOPPIN J turnover bad pass (2)
02:53	11 JOHNSON K foul drawn (2)			0 TOPPIN J foul shooting (2 - 6)
02:53	11 JOHNSON K free throw fast break 1 - 2 made (5)	22-22	0	
02:53				0 TOPPIN J substitution out
02:53				55 WARE L substitution in
02:53	11 JOHNSON K free throw fast break 2 - 2 made (6)	23-22	1	
02:26	1 NOWELL M foul shooting (1 - 5)			34 TSHIEBWE O foul drawn (4)
02:26		23-23	0	34 TSHIEBWE O free throw 1 - 2 made (8)
02:26	5 CARTER C substitution out			
02:26	13 SILLS D substitution in			
02:26				34 TSHIEBWE O free throw 2 - 2 missed
02:25	11 JOHNSON K defensive rebound (2)			
02:03	3 N'GUESSAN D 2pt FG in the paint, layup missed			
02:00	35 TOMLIN N offensive rebound (6)			
02:00	35 TOMLIN N 2pt FG second chance in the paint, layup made (6)	25-23	2	
01:36				12 REEVES A 2pt FG outside the paint, pull up jump shot missed
01:33				34 TSHIEBWE O offensive rebound (9)
01:31				34 TSHIEBWE O 2pt FG second chance in the paint, jump shot missed
01:29				24 LIVINGSTON C offensive rebound (3)
01:27				24 LIVINGSTON C 2pt FG second chance in the paint, layup blocked
01:27	35 TOMLIN N block (3)			
01:27				offensive rebound (24)
01:27	11 JOHNSON K substitution out			
01:27	5 CARTER C substitution in			
01:16	35 TOMLIN N steal (2)			34 TSHIEBWE O turnover bad pass (4)
01:13	35 TOMLIN N foul drawn (1)			12 REEVES A foul shooting (1 - 7)
01:13	35 TOMLIN N free throw fast break 1 - 2 missed			
01:13	offensive dead ball rebound (2)			
01:13	35 TOMLIN N free throw fast break 2 - 2 missed			
01:12				34 TSHIEBWE O defensive rebound (10)
00:57				34 TSHIEBWE O 2pt FG in the paint, jump shot missed
00:55				34 TSHIEBWE O offensive rebound (11)
00:55		25-25	0	34 TSHIEBWE O 2pt FG second chance in the paint, dunk, made (10)
00:55	3 N'GUESSAN D foul shooting (1 - 6)			34 TSHIEBWE O foul drawn (5)
00:55	3 N'GUESSAN D substitution out			
00:55	11 JOHNSON K substitution in			



Official Basketball Play by Play - First Half

Kentucky at Kansas St.

03/19/23 Greensboro Coliseum, Greensboro, NC
2023 NCAA Men's Basketball Championship Second Round

Game Time: 2:40 PM
Game Duration: 2:16
Attendance: 16,517

Officials: Jeffery Clark, Gerry Pollard, Kenneth Burdett

Game Time	KSU	Score	Diff	UK
00:55		25-26	-1	34 TSHIEBWE O free throw 1 - 1 made (11)
00:55				1 FREDRICK C substitution out
00:55				3 THIERO A substitution in
00:55				34 TSHIEBWE O substitution out
00:55				4 COLLINS D substitution in
00:44	1 NOWELL M 2pt FG in the paint, driving layup made (4)	27-26	1	
00:29				24 LIVINGSTON C turnover bad pass (1)
00:03	35 TOMLIN N 2pt FG from turnover in the paint, alleyoop made (8)	29-26	3	
00:03	1 NOWELL M assist (5)			
END OF PERIOD				
KSU 29-26 UK				



Kentucky at Kansas St.

03/19/23 Greensboro Coliseum, Greensboro, NC
2023 NCAA Men's Basketball Championship Second Round

Game Time: 2:40 PM
Game Duration: 2:16
Attendance: 16,517

Officials: Jeffery Clark, Gerry Pollard, Kenneth Burdett

Kentucky - 26

NO.	Name	F	Min	FG			3P			FT			Rebounds			Fouls		TP	AS	TO	ST	Blocks		+/-
				M-A	M-A	M-A	M-A	M-A	OR	DR	TOT	PF	FD	BS	BA									
0	Jacob Toppin	F	14:37	1-5	0-2	0-0	1	2	3	2	0	2	1	2	0	0	2	1	2	0	0	0	2	
24	Chris Livingston	F	17:39	2-6	0-1	0-0	2	1	3	0	0	4	0	1	1	0	1	1	1	0	1	0	-9	
34	Oscar Tshiebwe	F	17:04	4-8	0-0	3-4	5	6	11	1	5	11	1	4	0	0	1	1	4	0	0	1	1	
12	Antonio Reeves	G	15:51	0-9	0-5	0-0	0	3	3	1	0	0	1	0	1	0	1	0	1	0	1	0	1	
22	Cason Wallace	G	13:58	2-4	1-1	1-1	1	3	4	2	1	6	2	4	1	0	0	0	0	0	0	0	3	
1	CJ Fredrick		11:37	1-2	1-2	0-0	0	0	0	1	0	3	0	0	0	0	0	0	0	0	0	0	0	
4	Daimion Collins		02:56	0-0	0-0	0-0	0	0	0	0	0	0	0	0	0	0	0	0	0	0	0	0	-4	
55	Lance Ware		05:23	0-0	0-0	0-0	0	0	0	0	0	0	0	0	0	0	0	0	0	0	0	0	-5	
3	Adou Thiero		00:55	0-0	0-0	0-0	0	0	0	0	0	0	0	0	0	0	0	0	0	0	0	0	-4	
Team							2	0	2			0			0			0						
Totals				10-34	2-11	4-5	11	15	26	7	6	26	5	11	3	0	3	0	3	0	3	0	-3	

Shooting By Period		
1st FG%	10-34	29.4%
3PT%	2-11	18.2%
FT%	4-5	80%
GM FG%	10-34	29.4%
3PT%	2-11	18.2%
FT%	4-5	80.0%

Dead Ball Rebounds: 0, 0

Technical Fouls::NONE

Kansas St. - 29

NO.	Name	F	Min	FG			3P			FT			Rebounds			Fouls		TP	AS	TO	ST	Blocks		+/-
				M-A	M-A	M-A	M-A	M-A	OR	DR	TOT	PF	FD	BS	BA									
11	Keyontae Johnson	F	18:56	2-7	0-3	2-2	0	2	2	2	2	6	1	2	0	0	0	0	0	0	0	0	5	
35	Nae'Qwan Tomlin	F	15:52	4-6	0-2	0-2	3	3	6	1	1	8	0	1	2	3	0	5	1	2	3	0	5	
1	Markquis Nowell	G	19:44	2-4	0-2	0-0	0	1	1	1	0	4	5	2	1	0	0	3	1	0	0	0	3	
5	Cam Carter	G	13:47	2-6	0-3	0-0	0	3	3	0	1	4	0	0	1	0	0	-3	0	0	1	0	-3	
13	Desi Sills	G	11:34	1-2	0-1	3-4	0	2	2	0	2	5	0	0	1	0	0	4	0	0	1	0	4	
3	David N'Guessan		10:49	1-2	0-0	0-0	0	2	2	1	1	2	0	0	0	3	0	0	0	0	0	0	1	
23	Abayomi Iyiola		01:03	0-0	0-0	0-0	0	0	0	1	0	0	0	0	0	0	0	-1	0	0	0	0	-1	
25	Ismael Massoud		05:03	0-1	0-0	0-0	0	0	0	0	0	0	0	0	0	0	0	-2	0	0	0	0	-2	
4	Tykei Greene		03:12	0-1	0-1	0-0	0	0	0	0	0	0	0	0	0	0	0	3	0	0	0	0	3	
Team							0	1	1			0			0			0						
Totals				12-29	0-12	5-8	3	14	17	6	7	29	6	5	8	3	0	3	0	3	0	3	0	3

Shooting By Period		
1st FG%	12-29	41.4%
3PT%	0-12	0.0%
FT%	5-8	62.5%
GM FG%	12-29	41.4%
3PT%	0-12	0.0%
FT%	5-8	62.5%

Dead Ball Rebounds: 2, 0

Technical Fouls::NONE

	UK	KSU
Biggest lead	8 (1st 11:28)	3 (1st 0:03)
Best Scoring Run	6(1st 11:28)	6(1st 7:12)
Lead Changes	4	
Times Tied	4	
Time with Lead	14:34	02:52

Points from	UK	KSU
Turnovers	8	7
Paint	16	24
Second Chance	5	4
Fast Breaks	3	9
Bench	3	2

	Period by Period Scoring		
	1st	2nd	TOT
UK	26	43	69
KSU	29	46	75



Officials: Jeffery Clark, Gerry Pollard, Kenneth Burdett

Period 2

Quarter Starters:

KSU	1 Nowell M	5 Carter C	11 Johnson K	13 Sills D	35 Tomlin N
UK	0 Toppin J	12 Reeves A	22 Wallace C	24 Livingston C	34 Tshiebwe O

Game Time	KSU	Score	Diff	UK
20:00				3 THIERO A substitution out
20:00				4 COLLINS D substitution out
20:00				55 WARE L substitution out
20:00				0 TOPPIN J substitution in
20:00				22 WALLACE C substitution in
20:00				34 TSHIEBWE O substitution in
19:41	35 TOMLIN N 2pt FG in the paint, layup made (10)	31-26	5	
19:41	11 JOHNSON K assist (2)			
19:23		31-28	3	22 WALLACE C 2pt FG outside the paint, floating jump shot made (8)
19:00	11 JOHNSON K turnover lost ball (3)			22 WALLACE C steal (2)
18:55		31-30	1	22 WALLACE C 2pt FG fast break from turnover in the paint, driving layup made (10)
18:55	5 CARTER C foul shooting (1 - 1)			22 WALLACE C foul drawn (2)
18:55		31-31	0	22 WALLACE C free throw fast break 1 - 1 made (11)
18:39	11 JOHNSON K 2pt FG outside the paint, step back jump shot missed			
18:36				22 WALLACE C defensive rebound (5)
18:32				34 TSHIEBWE O 2pt FG in the paint, layup blocked
18:32	35 TOMLIN N block (4)			
18:30				24 LIVINGSTON C offensive rebound (4)
18:30	5 CARTER C foul shooting (2 - 2)			24 LIVINGSTON C foul drawn (1)
18:30				24 LIVINGSTON C free throw 1 - 2 missed
18:30				offensive dead ball rebound (1)
18:30	5 CARTER C substitution out			
18:30	3 N'GUESSAN D substitution in			
18:30				24 LIVINGSTON C free throw 2 - 2 missed
18:29	11 JOHNSON K defensive rebound (3)			
18:21	1 NOWELL M turnover bad pass (3)			34 TSHIEBWE O steal (1)
18:16		31-33	-2	24 LIVINGSTON C 2pt FG fast break from turnover in the paint, layup made (6)
18:16				22 WALLACE C assist (3)
17:43	11 JOHNSON K 2pt FG in the paint, turnaround jump shot missed			
17:41				0 TOPPIN J defensive rebound (4)
17:34		31-35	-4	34 TSHIEBWE O 2pt FG in the paint, layup made (13)
17:34				12 REEVES A assist (2)
17:28	Timeout 30 Sec			
17:28	Timeout media			
17:21	1 NOWELL M turnover lost ball (4)			34 TSHIEBWE O steal (2)
17:03		31-37	-6	22 WALLACE C 2pt FG from turnover in the paint, layup made (13)
17:03				0 TOPPIN J assist (2)
16:32	3 N'GUESSAN D 3pt FG , jump shot missed			
16:28				22 WALLACE C defensive rebound (6)



Officials: Jeffery Clark, Gerry Pollard, Kenneth Burdett

Game Time	KSU	Score	Diff	UK
16:24				12 REEVES A 2pt FG in the paint, layup missed
16:22				34 TSHIEBWE O offensive rebound (12)
16:21		31-39	-8	34 TSHIEBWE O 2pt FG second chance in the paint, layup made (15)
16:14	13 SILLS D 2pt FG fast break in the paint, driving layup made (7)	33-39	-6	
16:02	13 SILLS D foul personal (1 - 3)			22 WALLACE C foul drawn (3)
15:45	3 N'GUESSAN D foul personal (2 - 4)			34 TSHIEBWE O foul drawn (6)
15:45	Timeout media			
15:45	3 N'GUESSAN D substitution out			
15:45	25 MASSOUD I substitution in			
15:35	13 SILLS D foul personal (2 - 5)			0 TOPPIN J foul drawn (1)
15:20	1 NOWELL M steal (2)			12 REEVES A turnover lost ball (1)
15:12	13 SILLS D 2pt FG fast break from turnover in the paint, driving layup made (9)	35-39	-4	
15:12	13 SILLS D foul drawn (3)			12 REEVES A foul shooting (2 - 1)
15:12				12 REEVES A substitution out
15:12				1 FREDRICK C substitution in
15:12	13 SILLS D free throw fast break 1 - 1 made (10)	36-39	-3	
14:53				24 LIVINGSTON C 3pt FG , jump shot missed
14:49	1 NOWELL M defensive rebound (2)			
14:32	1 NOWELL M 3pt FG , jump shot made (7)	39-39	0	
14:02				0 TOPPIN J 2pt FG in the paint, driving layup missed
14:00				24 LIVINGSTON C offensive rebound (5)
14:00		39-41	-2	24 LIVINGSTON C 2pt FG second chance in the paint, dunk, made (8)
13:56	13 SILLS D foul drawn (4)			1 FREDRICK C foul personal (2 - 2)
13:55	13 SILLS D 2pt FG in the paint, layup missed			
13:52				34 TSHIEBWE O defensive rebound (13)
13:29	11 JOHNSON K steal (1)			34 TSHIEBWE O turnover lost ball (5)
13:18	35 TOMLIN N 2pt FG from turnover in the paint, layup made (12)	41-41	0	
13:18	25 MASSOUD I assist (1)			
12:57		41-43	-2	22 WALLACE C 2pt FG in the paint, driving layup made (15)
12:42	1 NOWELL M foul drawn (1)			0 TOPPIN J foul shooting (3 - 3)
12:42	1 NOWELL M free throw 1 - 3 made (8)	42-43	-1	
12:42	1 NOWELL M free throw 2 - 3 made (9)	43-43	0	
12:42	35 TOMLIN N substitution out			
12:42	3 N'GUESSAN D substitution in			
12:42				0 TOPPIN J substitution out
12:42				12 REEVES A substitution in
12:42	1 NOWELL M free throw 3 - 3 missed			
12:41				34 TSHIEBWE O defensive rebound (14)
12:20				24 LIVINGSTON C turnover bad pass (2)
11:54	1 NOWELL M 3pt FG from turnover, jump shot missed			
11:51				24 LIVINGSTON C defensive rebound (6)
11:51	3 N'GUESSAN D foul personal (3 - 6)			24 LIVINGSTON C foul drawn (2)
11:51	Timeout media			
11:37	25 MASSOUD I foul personal (1 - 7)			34 TSHIEBWE O foul drawn (7)
11:37				34 TSHIEBWE O 1&1 free throw 1 missed
11:36	13 SILLS D defensive rebound (3)			



Officials: Jeffery Clark, Gerry Pollard, Kenneth Burdett

Game Time	KSU	Score	Diff	UK
11:19	1 NOWELL M 2pt FG outside the paint, floating jump shot missed			
11:15				22 WALLACE C defensive rebound (7)
11:12				12 REEVES A 3pt FG , jump shot missed
11:07	defensive rebound (21)			
10:51	11 JOHNSON K 2pt FG in the paint, layup made (8)	45-43	2	
10:51	1 NOWELL M assist (6)			
10:26				12 REEVES A 3pt FG , jump shot missed
10:24	13 SILLS D defensive rebound (4)			
10:16	1 NOWELL M 2pt FG outside the paint, pull up jump shot made (11)	47-43	4	
10:15				Timeout 30 Sec
10:15	13 SILLS D substitution out			
10:15	25 MASSOUD I substitution out			
10:15	5 CARTER C substitution in			
10:15	35 TOMLIN N substitution in			
10:15				12 REEVES A substitution out
10:15				0 TOPPIN J substitution in
09:51		47-46	1	24 LIVINGSTON C 3pt FG , jump shot made (11)
09:51				0 TOPPIN J assist (3)
09:31	3 N'GUESSAN D 2pt FG in the paint, layup made (4)	49-46	3	
09:31	1 NOWELL M assist (7)			
09:11	35 TOMLIN N foul personal (2 - 8)			34 TSHIEBWE O foul drawn (8)
09:11		49-47	2	34 TSHIEBWE O 1&1 free throw 1 made (16)
09:11		49-48	1	34 TSHIEBWE O 1&1 free throw 2 made (17)
08:45	11 JOHNSON K 2pt FG in the paint, driving layup missed			
08:42				1 FREDRICK C defensive rebound (1)
08:16				0 TOPPIN J 2pt FG in the paint, layup missed
08:13				34 TSHIEBWE O offensive rebound (15)
08:05		49-50	-1	22 WALLACE C 2pt FG second chance outside the paint, jump shot made (17)
08:05				24 LIVINGSTON C assist (1)
07:44	1 NOWELL M 2pt FG in the paint, driving layup made (13)	51-50	1	
07:21				1 FREDRICK C 3pt FG , jump shot missed
07:20				34 TSHIEBWE O offensive rebound (16)
07:20	3 N'GUESSAN D foul personal (4 - 9)			34 TSHIEBWE O foul drawn (9)
07:20	3 N'GUESSAN D substitution out			
07:20	5 CARTER C substitution out			
07:20	13 SILLS D substitution in			
07:20	25 MASSOUD I substitution in			
07:20				1 FREDRICK C substitution out
07:20				12 REEVES A substitution in
07:20		51-51	0	34 TSHIEBWE O 1&1 free throw 1 made (18)
07:20		51-52	-1	34 TSHIEBWE O 1&1 free throw 2 made (19)
07:07	25 MASSOUD I foul drawn (1)			0 TOPPIN J foul personal (4 - 4)
07:07				0 TOPPIN J substitution out
07:07				55 WARE L substitution in
06:57	1 NOWELL M 2pt FG outside the paint, pull up jump shot blocked			
06:57				24 LIVINGSTON C block (1)



Officials: Jeffery Clark, Gerry Pollard, Kenneth Burdett

Game Time	KSU	Score	Diff	UK
06:54				22 WALLACE C defensive rebound (8)
06:32				12 REEVES A 3pt FG , jump shot missed
06:30				34 TSHIEBWE O offensive rebound (17)
06:29		51-54	-3	34 TSHIEBWE O 2pt FG second chance in the paint, dunk, made (21)
06:10	1 NOWELL M 3pt FG , jump shot made (16)	54-54	0	
06:10	11 JOHNSON K assist (3)			
05:45	35 TOMLIN N foul shooting (3 - 10)			34 TSHIEBWE O foul drawn (10)
05:45		54-55	-1	34 TSHIEBWE O free throw 1 - 2 made (22)
05:45		54-56	-2	34 TSHIEBWE O free throw 2 - 2 made (23)
05:32	11 JOHNSON K 2pt FG in the paint, layup made (10)	56-56	0	
05:32	25 MASSOUD I assist (2)			
05:19		56-58	-2	22 WALLACE C 2pt FG in the paint, driving layup made (19)
04:58	1 NOWELL M 3pt FG , jump shot missed			
04:56				defensive dead ball rebound (2)
04:56	25 MASSOUD I substitution out			
04:56	3 N'GUESSAN D substitution in			
04:39				55 WARE L turnover travel (1)
04:15	11 JOHNSON K 2pt FG from turnover in the paint, layup missed			
04:13				34 TSHIEBWE O defensive rebound (18)
03:58		56-60	-4	55 WARE L 2pt FG in the paint, dunk, made (2)
03:58				24 LIVINGSTON C assist (2)
03:35	1 NOWELL M 3pt FG , pull up jump shot made (19)	59-60	-1	
03:20	1 NOWELL M steal (3)			22 WALLACE C turnover lost ball (5)
03:20	Timeout media			
03:20	35 TOMLIN N substitution out			
03:20	25 MASSOUD I substitution in			
03:20				55 WARE L substitution out
03:20				0 TOPPIN J substitution in
02:59	1 NOWELL M foul drawn (2)			22 WALLACE C foul shooting (3 - 5)
02:59	1 NOWELL M free throw 1 - 2 made (20)	60-60	0	
02:59	1 NOWELL M free throw 2 - 2 made (21)	61-60	1	
02:46				24 LIVINGSTON C 2pt FG in the paint, hook shot missed
02:43				22 WALLACE C offensive rebound (9)
02:43		61-62	-1	22 WALLACE C 2pt FG second chance in the paint, layup made (21)
02:21	25 MASSOUD I 3pt FG , jump shot made (3)	64-62	2	
02:21	1 NOWELL M assist (8)			
02:01				24 LIVINGSTON C 3pt FG , jump shot missed
01:58	3 N'GUESSAN D defensive rebound (3)			
01:40	1 NOWELL M 3pt FG , jump shot missed			
01:36	3 N'GUESSAN D offensive rebound (4)			
01:23	11 JOHNSON K 3pt FG second chance, jump shot made (13)	67-62	5	
01:23	1 NOWELL M assist (9)			
01:03				12 REEVES A 3pt FG , jump shot missed
00:59				24 LIVINGSTON C offensive rebound (7)
00:59				24 LIVINGSTON C 2pt FG second chance in the paint, layup missed
00:58	11 JOHNSON K defensive rebound (4)			
00:44	1 NOWELL M foul drawn (3)			22 WALLACE C foul personal (4 - 6)



Officials: Jeffery Clark, Gerry Pollard, Kenneth Burdett

Game Time	KSU	Score	Diff	UK
00:44	Timeout 30 Sec			
00:39	Timeout 60 Sec			
00:39	3 N'GUESSAN D substitution out			
00:39	5 CARTER C substitution in			
00:37	1 NOWELL M foul drawn (4)			0 TOPPIN J foul personal (5 - 7)
00:37	25 MASSOUD I substitution out			
00:37	3 N'GUESSAN D substitution in			
00:37				0 TOPPIN J substitution out
00:37				1 FREDRICK C substitution in
00:37	1 NOWELL M 1&1 free throw 1 made (22)	68-62	6	
00:37	1 NOWELL M 1&1 free throw 2 made (23)	69-62	7	
00:26		69-64	5	34 TSHIEBWE O 2pt FG in the paint, dunk, made (25)
00:26				22 WALLACE C assist (4)
00:26				Timeout 30 Sec
00:26	3 N'GUESSAN D substitution out			
00:26	25 MASSOUD I substitution in			
00:23	1 NOWELL M foul drawn (5)			22 WALLACE C foul personal (5 - 8)
00:23	25 MASSOUD I substitution out			
00:23	3 N'GUESSAN D substitution in			
00:23				22 WALLACE C substitution out
00:23				3 THIERO A substitution in
00:23	1 NOWELL M 1&1 free throw 1 made (24)	70-64	6	
00:23	1 NOWELL M 1&1 free throw 2 made (25)	71-64	7	
00:15	3 N'GUESSAN D foul shooting (5 - 11)			12 REEVES A foul drawn (1)
00:15	3 N'GUESSAN D substitution out			
00:15	25 MASSOUD I substitution in			
00:15		71-65	6	12 REEVES A free throw 1 - 2 made (1)
00:15				34 TSHIEBWE O substitution out
00:15				55 WARE L substitution in
00:15		71-66	5	12 REEVES A free throw 2 - 2 made (2)
00:13	13 SILLS D foul drawn (5)			3 THIERO A foul personal (1 - 9)
00:13	13 SILLS D 1&1 free throw 1 made (11)	72-66	6	
00:13	13 SILLS D 1&1 free throw 2 made (12)	73-66	7	
00:13	25 MASSOUD I substitution out			
00:13	35 TOMLIN N substitution in			
00:13				55 WARE L substitution out
00:13				34 TSHIEBWE O substitution in
00:08		73-69	4	12 REEVES A 3pt FG , pull up jump shot made (5)
00:06				Timeout 60 Sec
00:06	35 TOMLIN N substitution out			
00:06	25 MASSOUD I substitution in			
00:04	1 NOWELL M foul drawn (6)			12 REEVES A foul personal (3 - 10)
00:04	1 NOWELL M free throw fast break 1 - 2 made (26)	74-69	5	
00:04	1 NOWELL M free throw fast break 2 - 2 made (27)	75-69	6	
END OF GAME				
KSU 75-69 UK				



Officials: Jeffery Clark, Gerry Pollard, Kenneth Burdett

Kentucky - 43

NO.	Name	Min	FG			Rebounds			Fouls		TP	AS	TO	ST	Blocks		+/-
			M-A	M-A	M-A	OR	DR	TOT	PF	FD					BS	BA	
0	Jacob Toppin	F 13:08	0-2	0-0	0-0	0	1	1	3	1	0	2	0	0	0	0	2
24	Chris Livingston	F 20:00	3-7	1-3	0-2	3	1	4	0	2	7	2	1	0	1	0	-3
34	Oscar Tshiebwe	F 19:59	4-5	0-0	6-7	4	3	7	0	5	14	0	1	2	0	1	-2
12	Antonio Reeves	G 14:35	1-6	1-5	2-2	0	0	0	2	1	5	1	1	0	0	0	-2
22	Cason Wallace	G 19:36	7-7	0-0	1-1	1	4	5	3	2	15	2	1	1	0	0	-2
4	Daimion Collins	00:00	0-0	0-0	0-0	0	0	0	0	0	0	0	0	0	0	0	0
1	CJ Fredrick	08:30	0-1	0-1	0-0	0	1	1	1	0	0	0	0	0	0	0	-6
55	Lance Ware	03:48	1-1	0-0	0-0	0	0	0	0	0	2	0	1	0	0	0	-1
3	Adou Thiero	00:24	0-0	0-0	0-0	0	0	0	1	0	0	0	0	0	0	0	-1
Team						0	0	0			0		0				
Totals			16-29	2-9	9-12	8	10	18	10	11	43	7	5	3	1	1	-3

Shooting By Period		
2 nd FG%	16-29	55.2%
3PT%	2-9	22.2%
FT%	9-12	75%
GM FG%	16-29	55.2%
3PT%	2-9	22.2%
FT%	9-12	75.0%

Dead Ball Rebounds: 1, 1

Technical Fouls::NONE

Kansas St. - 46

NO.	Name	Min	FG			Rebounds			Fouls		TP	AS	TO	ST	Blocks		+/-
			M-A	M-A	M-A	OR	DR	TOT	PF	FD					BS	BA	
11	Keyontae Johnson	F 20:00	3-7	1-1	0-0	0	2	2	0	0	7	2	1	1	0	0	3
35	Nae'Qwan Tomlin	F 14:20	2-2	0-0	0-0	0	0	0	2	0	4	0	0	0	1	0	-11
1	Markquis Nowell	G 20:00	5-10	3-6	10-11	0	1	1	0	6	23	4	2	2	0	1	3
5	Cam Carter	G 05:04	0-0	0-0	0-0	0	0	0	2	0	0	0	0	0	0	0	-5
13	Desi Sills	G 17:05	2-3	0-0	3-3	0	2	2	2	3	7	0	0	0	0	0	6
3	David N'Guessan	12:44	1-2	0-1	0-0	1	1	2	4	0	2	0	0	0	0	0	4
25	Ismael Massoud	10:47	1-1	1-1	0-0	0	0	0	1	1	3	2	0	0	0	0	15
Team						0	1	1			0		0				
Totals			14-25	5-9	13-14	1	7	8	11	10	46	8	3	3	1	1	3

Shooting By Period		
2 nd FG%	14-25	56.0%
3PT%	5-9	55.6%
FT%	13-14	92.9%
GM FG%	14-25	56.0%
3PT%	5-9	55.6%
FT%	13-14	92.9%

Dead Ball Rebounds: 0, 0

Technical Fouls::NONE

	UK	KSU
Biggest lead	8 (2 nd 16:21)	7 (2 nd 0:37)
Best Scoring Run	13 (2 nd 16:21)	8 (2 nd 14:32)
Lead Changes	8	
Times Tied	8	
Time with Lead	09:07	06:33

Points from	UK	KSU
Turnovers	7	7
Paint	24	16
Second Chance	12	3
Fast Breaks	5	11
Bench	2	5

	Period by Period Scoring		
	1st	2nd	TOT
UK	26	43	69
KSU	29	46	75



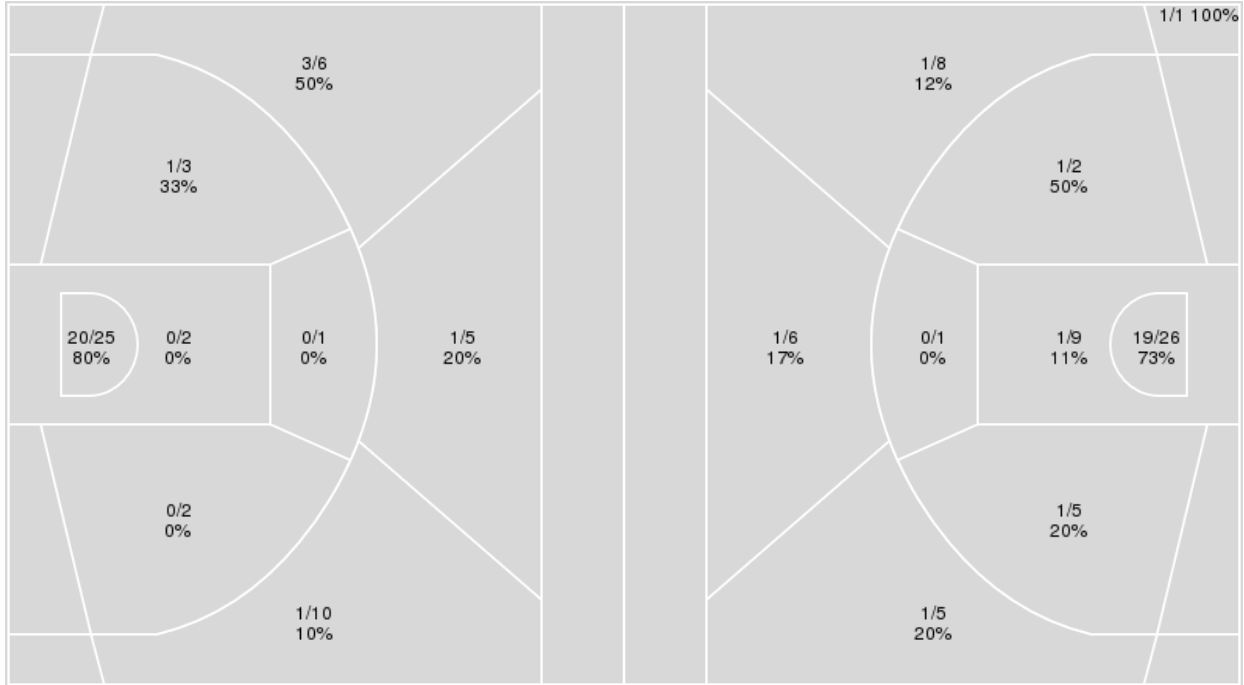
Officials: Jeffery Clark, Gerry Pollard, Kenneth Burdett

{ Players => All; } FG Types => All; Results => All;

{ Players => All; } FG Types => All; Results => All;

Kansas St.

Kentucky



Kansas St.	M/A	%
Field Goals	26/54	48
2 Points	21/33	64
3 Points	5/21	24
Free Throws	18/22	82

Kentucky	M/A	%
Field Goals	26/63	41
2 Points	22/43	51
3 Points	4/20	20
Free Throws	13/17	76



Kentucky at Kansas St.

03/19/23 Greensboro Coliseum, Greensboro, NC
2023 NCAA Men's Basketball Championship Second Round

Game Time: 2:40 PM
Game Duration: 2:16
Attendance: 16,517

Officials: Jeffery Clark, Gerry Pollard, Kenneth Burdett

Kentucky

No	Name	Mins		Score		Points Diff		Points per Min		Assists		Rebounds		Steals		Turnovers	
		On	Off	On	Off	On	Off	On	Off	On	Off	On	Off	On	Off	On	Off
0	Jacob Toppin	27:45	12:15	48 - 44	21 - 31	4	-10	1.73	1.71	10	2	33	11	5	1	10	6
1	CJ Fredrick	20:07	19:53	38 - 44	31 - 31	-6	0	1.89	1.56	6	6	21	23	3	3	5	11
3	Adou Thiero	01:19	38:41	5 - 10	64 - 65	-5	-1	3.80	1.65	0	12	0	44	0	6	1	15
4	Daimion Collins	02:56	37:04	2 - 6	67 - 69	-4	-2	0.68	1.81	0	12	0	44	1	5	2	14
12	Antonio Reeves	30:26	09:34	52 - 53	17 - 22	-1	-5	1.71	1.78	8	4	36	8	6	0	15	1
22	Cason Wallace	33:34	06:26	58 - 57	11 - 18	1	-7	1.73	1.71	12	0	36	8	4	2	12	4
24	Chris Livingston	37:39	02:21	61 - 73	8 - 2	-12	6	1.62	3.40	11	1	42	2	5	1	16	0
34	Oscar Tshiebwe	37:03	02:57	66 - 67	3 - 8	-1	-5	1.78	1.02	12	0	44	0	5	1	14	2
55	Lance Ware	09:11	30:49	15 - 21	54 - 54	-6	0	1.63	1.75	1	11	8	36	1	5	5	11

Kansas St.

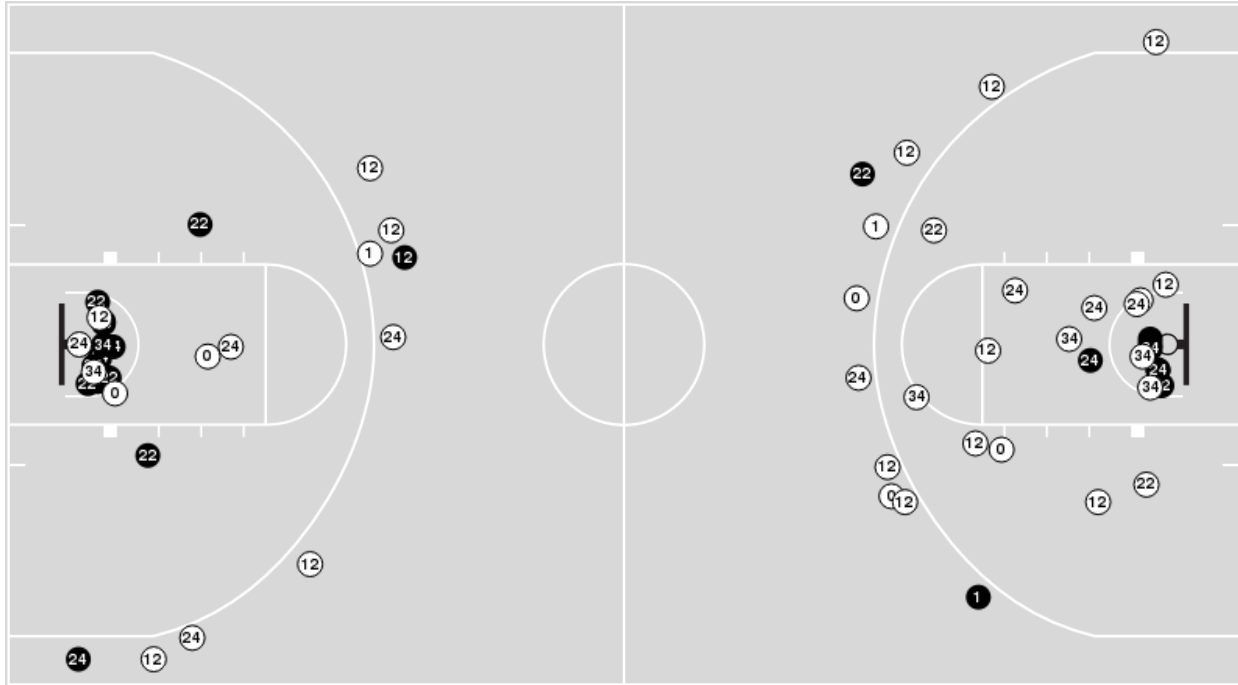
No	Name	Mins		Score		Points Diff		Points per Min		Assists		Rebounds		Steals		Turnovers	
		On	Off	On	Off	On	Off	On	Off	On	Off	On	Off	On	Off	On	Off
1	Markquis Nowell	39:44	00:16	75 - 69	0 - 0	6	0	1.89	0.00	14	0	25	0	10	1	8	0
3	David N'Guessan	23:33	16:27	36 - 31	39 - 38	5	1	1.53	2.37	6	8	15	10	6	5	5	3
4	Tykei Greene	03:12	36:48	8 - 5	67 - 64	3	3	2.50	1.82	1	13	5	20	0	11	0	8
5	Cam Carter	18:51	21:09	35 - 43	40 - 26	-8	14	1.86	1.89	7	7	10	15	8	3	3	5
11	Keyontae Johnson	38:56	01:04	75 - 67	0 - 2	8	-2	1.93	0.00	14	0	24	1	10	1	8	0
13	Desi Sills	28:39	11:21	57 - 47	18 - 22	10	-4	1.99	1.59	9	5	17	8	8	3	6	2
23	Abayomi Iyiola	01:03	38:57	2 - 3	73 - 66	-1	7	1.90	1.87	1	13	1	24	0	11	1	7
25	Ismael Massoud	15:50	24:10	37 - 24	38 - 45	13	-7	2.34	1.57	8	6	12	13	3	8	2	6
35	Nae'Qwan Tomlin	30:12	09:48	50 - 56	25 - 13	-6	12	1.66	2.55	10	4	16	9	10	1	7	1



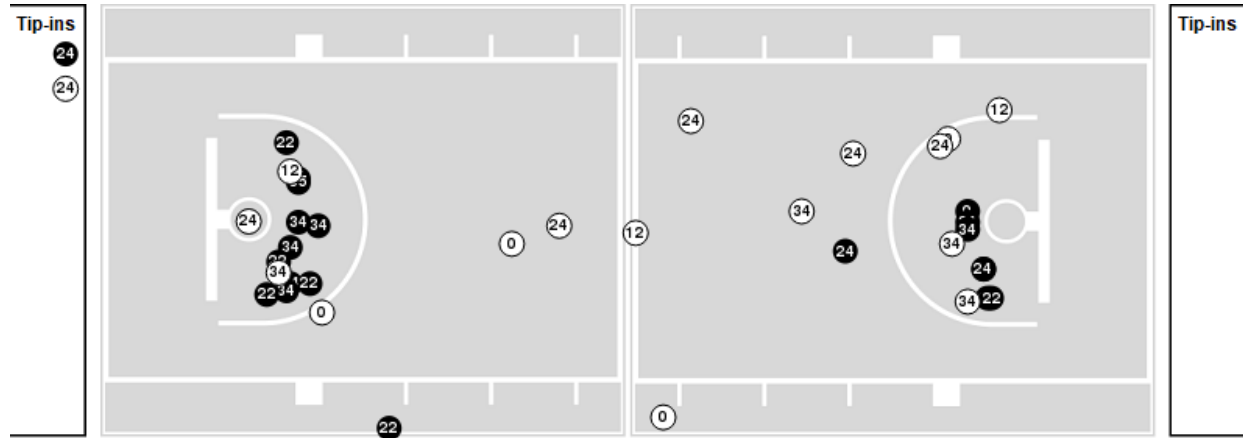
Players => AllFG Types=>AllResults=>All

Kentucky

All Field Goals



Blow Up Chart



● Made ○ Missed N - Player Number

Kentucky	M/A	%
Field Goals	26/63	41
2 Points	22/43	51
3 Points	4/20	20
Free Throws	13/17	76

Kentucky	M/A	%
Points in the Paint	40 (20 / 35)	57
Fast Break Points	8 (5/5)	100
Second Chance Points	17 (10/18)	56
Effective FG%	44	

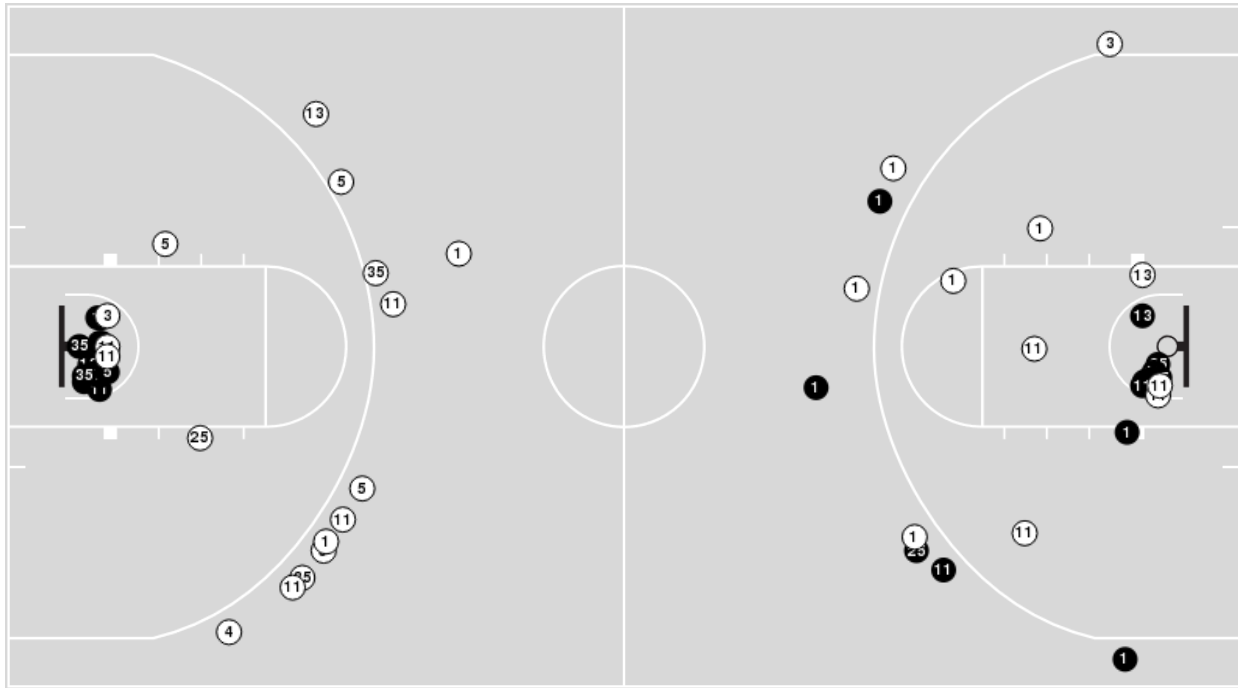


Officials: Jeffery Clark, Gerry Pollard, Kenneth Burdett

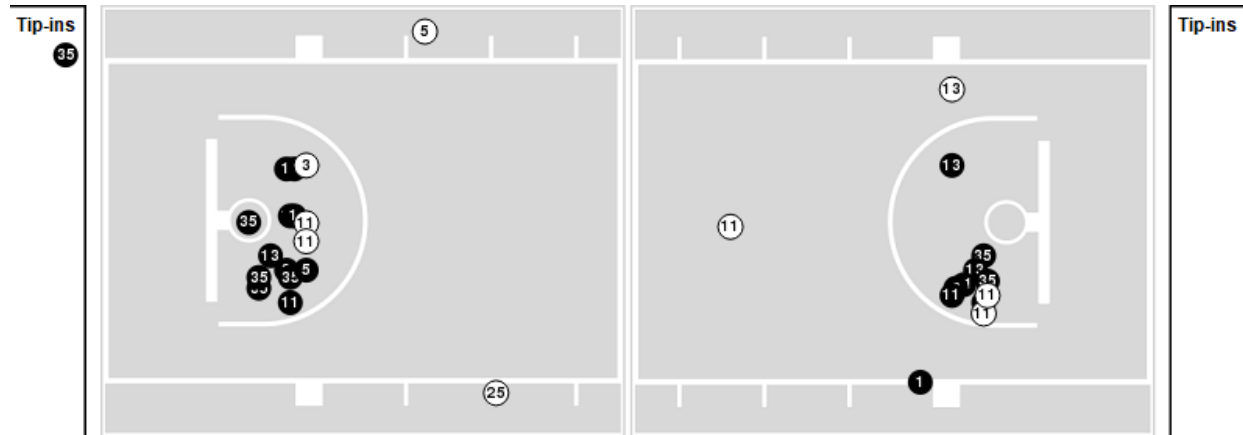
Players => AllFG Types=>AllResults=>All

Kansas St.

All Field Goals



Blow Up Chart



● Made ○ Missed N - Player Number

Kansas St.	M/A	%
Field Goals	26/54	48
2 Points	21/33	64
3 Points	5/21	24
Free Throws	18/22	82

Kansas St.	M/A	%
Points in the Paint	40 (20 / 27)	74
Fast Break Points	20 (15/18)	83
Second Chance Points	7 (3/4)	75
Effective FG%	53	



Kentucky

Lineup	Quarter On	Time On	Quarter Off	Time Off	Time on Court	Score	Score Diff	Reb	Stl	Tov	Ass	PPP
0- Toppin J/ 12- Reeves A/ 22- Wallace C/ 24- Livingston C/ 34- Tshiebwe O/	1	20:00	1	13:22	06:38	6-5	1	12	0	5	2	0.4615
0- Toppin J/ 1- Fredrick C/ 12- Reeves A/ 22- Wallace C/ 34- Tshiebwe O/	1	13:22	1	11:28	01:54	8-2	6	1	1	0	1	1.8018
0- Toppin J/ 1- Fredrick C/ 22- Wallace C/ 24- Livingston C/ 34- Tshiebwe O/	1	11:28	1	09:59	01:29	1-2	-1	2	0	0	0	0.4098
4- Collins D/ 12- Reeves A/ 22- Wallace C/ 24- Livingston C/ 55- Ware L/	1	09:59	1	09:43	00:16	0-0	0	0	0	1	0	0.0000
1- Fredrick C/ 4- Collins D/ 12- Reeves A/ 24- Livingston C/ 55- Ware L/	1	09:43	1	07:58	01:45	2-2	0	0	1	0	0	1.0000
1- Fredrick C/ 22- Wallace C/ 24- Livingston C/ 34- Tshiebwe O/ 55- Ware L/	1	07:58	1	07:29	00:29	0-2	-2	0	0	0	0	0.0000
0- Toppin J/ 1- Fredrick C/ 22- Wallace C/ 24- Livingston C/ 34- Tshiebwe O/	1	07:29	1	05:18	02:11	5-6	-1	1	0	0	2	1.2500
0- Toppin J/ 1- Fredrick C/ 12- Reeves A/ 22- Wallace C/ 34- Tshiebwe O/	1	05:18	1	04:51	00:27	0-0	0	1	0	0	0	0.0000
0- Toppin J/ 1- Fredrick C/ 12- Reeves A/ 24- Livingston C/ 34- Tshiebwe O/	1	04:51	1	04:22	00:29	0-0	0	1	1	1	0	0.0000
0- Toppin J/ 12- Reeves A/ 22- Wallace C/ 24- Livingston C/ 34- Tshiebwe O/	1	04:22	1	03:48	00:34	0-0	0	1	0	1	0	0.0000
0- Toppin J/ 1- Fredrick C/ 12- Reeves A/ 24- Livingston C/ 34- Tshiebwe O/	1	03:48	1	02:53	00:55	0-3	-3	2	0	1	0	0.0000
1- Fredrick C/ 12- Reeves A/ 24- Livingston C/ 34- Tshiebwe O/ 55- Ware L/	1	02:53	1	00:55	01:58	4-3	1	5	0	1	0	1.2048
3- Thiero A/ 12- Reeves A/ 24- Livingston C/ 34- Tshiebwe O/ 55- Ware L/	1	00:55	1	00:55	00:00	0-0	0	0	0	0	0	0.0000
3- Thiero A/ 4- Collins D/ 12- Reeves A/ 24- Livingston C/ 55- Ware L/	1	00:55	2	20:00	00:55	0-4	-4	0	0	1	0	0.0000
0- Toppin J/ 12- Reeves A/ 22- Wallace C/ 24- Livingston C/ 34- Tshiebwe O/	2	20:00	2	15:12	04:48	13-6	7	5	3	1	3	1.5625
0- Toppin J/ 1- Fredrick C/ 22- Wallace C/ 24- Livingston C/ 34- Tshiebwe O/	2	15:12	2	12:42	02:30	4-8	-4	2	0	1	0	1.0000
1- Fredrick C/ 12- Reeves A/ 22- Wallace C/ 24- Livingston C/ 34- Tshiebwe O/	2	12:42	2	10:15	02:27	0-4	-4	3	0	1	0	0.0000
0- Toppin J/ 1- Fredrick C/ 22- Wallace C/ 24- Livingston C/ 34- Tshiebwe O/	2	10:15	2	07:20	02:55	7-4	3	3	0	0	2	2.4306
0- Toppin J/ 12- Reeves A/ 22- Wallace C/ 24- Livingston C/ 34- Tshiebwe O/	2	07:20	2	07:07	00:13	2-0	2	0	0	0	0	2.2727
12- Reeves A/ 22- Wallace C/ 24- Livingston C/ 34- Tshiebwe O/ 55- Ware L/	2	07:07	2	03:20	03:47	8-8	0	3	0	2	1	1.3605
0- Toppin J/ 12- Reeves A/ 22- Wallace C/ 24- Livingston C/ 34- Tshiebwe O/	2	03:20	2	00:37	02:42	2-8	-6	2	0	0	0	0.6667
1- Fredrick C/ 12- Reeves A/ 22- Wallace C/ 24- Livingston C/ 34- Tshiebwe O/	2	00:37	2	00:23	00:14	2-2	0	0	0	0	1	2.0000
1- Fredrick C/ 3- Thiero A/ 12- Reeves A/ 24- Livingston C/ 34- Tshiebwe O/	2	00:23	2	00:15	00:09	1-2	-1	0	0	0	0	2.2727
1- Fredrick C/ 3- Thiero A/ 12- Reeves A/ 24- Livingston C/ 55- Ware L/	2	00:15	2	00:13	00:01	1-2	-1	0	0	0	0	2.2727
1- Fredrick C/ 3- Thiero A/ 12- Reeves A/ 24- Livingston C/ 34- Tshiebwe O/	2	00:13	2	00:00	00:14	3-2	1	0	0	0	0	3.0000



Officials: Jeffery Clark, Gerry Pollard, Kenneth Burdett

Kansas St.

Lineup	Quarter On	Time On	Quarter Off	Time Off	Time on Court	Score	Score Diff	Reb	Stl	Tov	Ass	PPP
1- Nowell M/ 5- Carter C/ 11- Johnson K/ 13- Sills D/ 35- Tomlin N/	1	20:00	1	17:32	02:28	2-2	0	1	3	0	0	0.4505
1- Nowell M/ 3- N'Guessan D/ 5- Carter C/ 11- Johnson K/ 13- Sills D/	1	17:32	1	16:22	01:10	1-4	-3	1	0	0	0	0.4098
1- Nowell M/ 3- N'Guessan D/ 11- Johnson K/ 13- Sills D/ 35- Tomlin N/	1	16:22	1	14:04	02:18	0-0	0	2	0	1	0	0.0000
1- Nowell M/ 11- Johnson K/ 13- Sills D/ 23- Iyiola A/ 35- Tomlin N/	1	14:04	1	13:22	00:42	2-0	2	1	0	1	1	1.0000
1- Nowell M/ 5- Carter C/ 11- Johnson K/ 23- Iyiola A/ 35- Tomlin N/	1	13:22	1	13:01	00:21	0-3	-3	0	0	0	0	0.0000
1- Nowell M/ 5- Carter C/ 11- Johnson K/ 25- Massoud I/ 35- Tomlin N/	1	13:01	1	11:28	01:33	2-5	-3	2	0	1	1	0.6667
1- Nowell M/ 3- N'Guessan D/ 5- Carter C/ 11- Johnson K/ 25- Massoud I/	1	11:28	1	09:59	01:29	2-1	1	2	0	0	1	0.6667
3- N'Guessan D/ 5- Carter C/ 11- Johnson K/ 13- Sills D/ 25- Massoud I/	1	09:59	1	09:43	00:16	0-0	0	0	1	0	0	0.0000
1- Nowell M/ 3- N'Guessan D/ 11- Johnson K/ 13- Sills D/ 25- Massoud I/	1	09:43	1	08:30	01:13	2-2	0	0	0	1	0	1.0000
1- Nowell M/ 4- Greene T/ 13- Sills D/ 25- Massoud I/ 35- Tomlin N/	1	08:30	1	07:58	00:32	0-0	0	1	0	0	0	0.0000
1- Nowell M/ 4- Greene T/ 11- Johnson K/ 13- Sills D/ 35- Tomlin N/	1	07:58	1	07:29	00:29	2-0	2	1	0	0	0	2.2727
1- Nowell M/ 4- Greene T/ 5- Carter C/ 11- Johnson K/ 35- Tomlin N/	1	07:29	1	05:18	02:11	6-5	1	3	0	0	1	1.5000
1- Nowell M/ 3- N'Guessan D/ 5- Carter C/ 11- Johnson K/ 35- Tomlin N/	1	05:18	1	02:26	02:52	4-1	3	1	3	1	1	0.8197
1- Nowell M/ 3- N'Guessan D/ 11- Johnson K/ 13- Sills D/ 35- Tomlin N/	1	02:26	1	01:27	00:59	2-0	2	2	0	0	0	2.0000
1- Nowell M/ 3- N'Guessan D/ 5- Carter C/ 13- Sills D/ 35- Tomlin N/	1	01:27	1	00:55	00:32	0-2	-2	0	1	0	0	0.0000
1- Nowell M/ 5- Carter C/ 11- Johnson K/ 13- Sills D/ 35- Tomlin N/	1	00:55	2	18:30	02:25	6-6	0	0	0	1	2	1.2000
1- Nowell M/ 3- N'Guessan D/ 11- Johnson K/ 13- Sills D/ 35- Tomlin N/	2	18:30	2	15:45	02:45	2-8	-6	1	0	2	0	0.4000
1- Nowell M/ 11- Johnson K/ 13- Sills D/ 25- Massoud I/ 35- Tomlin N/	2	15:45	2	12:42	03:03	10-4	6	1	2	0	1	1.8797
1- Nowell M/ 3- N'Guessan D/ 11- Johnson K/ 13- Sills D/ 25- Massoud I/	2	12:42	2	10:15	02:27	4-0	4	3	0	0	1	0.9009
1- Nowell M/ 3- N'Guessan D/ 5- Carter C/ 11- Johnson K/ 35- Tomlin N/	2	10:15	2	07:20	02:55	4-7	-3	0	0	0	1	1.3333
1- Nowell M/ 11- Johnson K/ 13- Sills D/ 25- Massoud I/ 35- Tomlin N/	2	07:20	2	04:56	02:24	5-8	-3	0	0	0	2	1.2500
1- Nowell M/ 3- N'Guessan D/ 11- Johnson K/ 13- Sills D/ 35- Tomlin N/	2	04:56	2	03:20	01:36	3-2	1	0	1	0	0	1.5000
1- Nowell M/ 3- N'Guessan D/ 11- Johnson K/ 13- Sills D/ 25- Massoud I/	2	03:20	2	00:39	02:41	8-2	6	3	0	0	2	2.7778
1- Nowell M/ 5- Carter C/ 11- Johnson K/ 13- Sills D/ 25- Massoud I/	2	00:39	2	00:37	00:01	0-0	0	0	0	0	0	0.0000
1- Nowell M/ 3- N'Guessan D/ 5- Carter C/ 11- Johnson K/ 13- Sills D/	2	00:37	2	00:26	00:11	2-2	0	0	0	0	0	2.2727
1- Nowell M/ 5- Carter C/ 11- Johnson K/ 13- Sills D/ 25- Massoud I/	2	00:26	2	00:23	00:03	0-0	0	0	0	0	0	0.0000
1- Nowell M/ 3- N'Guessan D/ 5- Carter C/ 11- Johnson K/ 13- Sills D/	2	00:23	2	00:15	00:09	2-0	2	0	0	0	0	2.2727
1- Nowell M/ 5- Carter C/ 11- Johnson K/ 13- Sills D/ 25- Massoud I/	2	00:15	2	00:13	00:01	2-2	0	0	0	0	0	2.2727
1- Nowell M/ 5- Carter C/ 11- Johnson K/ 13- Sills D/ 35- Tomlin N/	2	00:13	2	00:06	00:07	0-3	-3	0	0	0	0	0.0000
1- Nowell M/ 5- Carter C/ 11- Johnson K/ 13- Sills D/ 25- Massoud I/	2	00:06	2	00:00	00:07	2-0	2	0	0	0	0	2.2727



Officials: Jeffery Clark, Gerry Pollard, Kenneth Burdett

Kentucky

Lineup	Time	Score	Score Diff	Pts/Min	Reb	Stl	Tov	Ass	PPP
0- Toppin J/ 12- Reeves A/ 22- Wallace C/ 24- Livingston C/ 34- Tshiebwe O/	14:55	23-19	4	1.5419	20	3	7	5	0.8779
0- Toppin J/ 1- Fredrick C/ 22- Wallace C/ 24- Livingston C/ 34- Tshiebwe O/	09:05	17-20	-3	1.8716	8	0	1	4	1.2763
12- Reeves A/ 22- Wallace C/ 24- Livingston C/ 34- Tshiebwe O/ 55- Ware L/	03:47	8-8	0	2.1145	3	0	2	1	1.3605
1- Fredrick C/ 12- Reeves A/ 22- Wallace C/ 24- Livingston C/ 34- Tshiebwe O/	02:41	2-6	-4	0.7453	3	0	1	1	0.4505
0- Toppin J/ 1- Fredrick C/ 12- Reeves A/ 22- Wallace C/ 34- Tshiebwe O/	02:21	8-2	6	3.4043	2	1	0	1	1.8018
1- Fredrick C/ 12- Reeves A/ 24- Livingston C/ 34- Tshiebwe O/ 55- Ware L/	01:58	4-3	1	2.0339	5	0	1	0	1.2048
1- Fredrick C/ 4- Collins D/ 12- Reeves A/ 24- Livingston C/ 55- Ware L/	01:45	2-2	0	1.1429	0	1	0	0	1.0000
0- Toppin J/ 1- Fredrick C/ 12- Reeves A/ 24- Livingston C/ 34- Tshiebwe O/	01:24	0-3	-3	0.0000	3	1	2	0	0.0000
3- Thiero A/ 4- Collins D/ 12- Reeves A/ 24- Livingston C/ 55- Ware L/	00:55	0-4	-4	0.0000	0	0	1	0	0.0000
1- Fredrick C/ 22- Wallace C/ 24- Livingston C/ 34- Tshiebwe O/ 55- Ware L/	00:29	0-2	-2	0.0000	0	0	0	0	0.0000
1- Fredrick C/ 3- Thiero A/ 12- Reeves A/ 24- Livingston C/ 34- Tshiebwe O/	00:23	4-4	0	10.4348	0	0	0	0	2.7778
4- Collins D/ 12- Reeves A/ 22- Wallace C/ 24- Livingston C/ 55- Ware L/	00:16	0-0	0	0.0000	0	0	1	0	0.0000
1- Fredrick C/ 3- Thiero A/ 12- Reeves A/ 24- Livingston C/ 55- Ware L/	00:01	1-2	-1	60.0000	0	0	0	0	2.2727
3- Thiero A/ 12- Reeves A/ 24- Livingston C/ 34- Tshiebwe O/ 55- Ware L/	00:00	0-0	0	NaN	0	0	0	0	0.0000



Kentucky at Kansas St.

03/19/23 Greensboro Coliseum, Greensboro, NC
2023 NCAA Men's Basketball Championship Second Round

Game Time: 2:40 PM
Game Duration: 2:16
Attendance: 16,517

Officials: Jeffery Clark, Gerry Pollard, Kenneth Burdett

Kansas St.

Lineup	Time	Score	Score Diff	Pts/Min	Reb	Stl	Tov	Ass	PPP
1- Nowell M/ 3- N'Guessan D/ 11- Johnson K/ 13- Sills D/ 35- Tomlin N/	07:38	7-10	-3	0.9170	5	1	3	0	0.5833
1- Nowell M/ 3- N'Guessan D/ 11- Johnson K/ 13- Sills D/ 25- Massoud I/	06:21	14-4	10	2.2047	6	0	1	3	1.5021
1- Nowell M/ 3- N'Guessan D/ 5- Carter C/ 11- Johnson K/ 35- Tomlin N/	05:47	8-8	0	1.3833	1	3	1	2	1.0152
1- Nowell M/ 11- Johnson K/ 13- Sills D/ 25- Massoud I/ 35- Tomlin N/	05:27	15-12	3	2.7523	1	2	0	3	1.6094
1- Nowell M/ 5- Carter C/ 11- Johnson K/ 13- Sills D/ 35- Tomlin N/	05:00	8-11	-3	1.6000	1	3	1	2	0.8475
1- Nowell M/ 4- Greene T/ 5- Carter C/ 11- Johnson K/ 35- Tomlin N/	02:11	6-5	1	2.7481	3	0	0	1	1.5000
1- Nowell M/ 5- Carter C/ 11- Johnson K/ 25- Massoud I/ 35- Tomlin N/	01:33	2-5	-3	1.2903	2	0	1	1	0.6667
1- Nowell M/ 3- N'Guessan D/ 5- Carter C/ 11- Johnson K/ 13- Sills D/	01:30	5-6	-1	3.3333	1	0	0	0	1.1905
1- Nowell M/ 3- N'Guessan D/ 5- Carter C/ 11- Johnson K/ 25- Massoud I/	01:29	2-1	1	1.3483	2	0	0	1	0.6667
1- Nowell M/ 11- Johnson K/ 13- Sills D/ 23- Iyola A/ 35- Tomlin N/	00:42	2-0	2	2.8571	1	0	1	1	1.0000
1- Nowell M/ 4- Greene T/ 13- Sills D/ 25- Massoud I/ 35- Tomlin N/	00:32	0-0	0	0.0000	1	0	0	0	0.0000
1- Nowell M/ 3- N'Guessan D/ 5- Carter C/ 13- Sills D/ 35- Tomlin N/	00:32	0-2	-2	0.0000	0	1	0	0	0.0000
1- Nowell M/ 4- Greene T/ 11- Johnson K/ 13- Sills D/ 35- Tomlin N/	00:29	2-0	2	4.1379	1	0	0	0	2.2727
1- Nowell M/ 5- Carter C/ 11- Johnson K/ 23- Iyola A/ 35- Tomlin N/	00:21	0-3	-3	0.0000	0	0	0	0	0.0000
3- N'Guessan D/ 5- Carter C/ 11- Johnson K/ 13- Sills D/ 25- Massoud I/	00:16	0-0	0	0.0000	0	1	0	0	0.0000
1- Nowell M/ 5- Carter C/ 11- Johnson K/ 13- Sills D/ 25- Massoud I/	00:12	4-2	2	20.0000	0	0	0	0	2.2727