



# MISSOURI

## 2023-24 WOMEN'S BASKETBALL GAME NOTES



MIZZOU STRATEGIC COMMUNICATIONS 1 CHAMPIONS DRIVE SUITE 200 COLUMBIA, MO 65211-3110 • MUTIGERS.COM

### 2023-24 SCHEDULE/RESULTS

#### NOVEMBER

6	<b>BELMONT</b>	W, 72-61
9	<b>INDIANA STATE</b>	W, 98-57
12	Saint Louis	L, 93-85
14	<b>NORTH ALABAMA</b>	W, 83-72
20	<b>SOUTHERN INDIANA</b>	W, 96-62
24	Tennessee Tech^	W, 66-65
25	Kent State^	L, 67-64
30	at Virginia*	L, 87-81

#### DECEMBER

2	<b>SEMO</b>	W, 88-43
6	<b>MISSOURI STATE</b>	W, 81-63
9	Kansas State%	L, 84-56
17	at Illinois	W, 69-66
21	<b>KANSAS CITY</b>	W, 85-42

#### JANUARY

4	at LSU	L, 92-72
7	<b>ALABAMA</b>	L, 79-64
11	<b>SOUTH CAROLINA</b>	L, 81-57
14	at Vanderbilt	W, 65-63
18	<b>GEORGIA</b>	W, 69-57
21	at Kentucky	1 PM
25	<b>TEXAS A&amp;M</b>	8 PM
28	<b>ARKANSAS</b>	2 PM

#### FEBRUARY

4	at Tennessee	1 PM
8	at South Carolina	6 PM
11	<b>AUBURN</b>	1 PM
18	at Arkansas	3 PM
22	at Florida	5 PM
26	<b>OLE MISS</b>	6 PM
29	<b>VANDERBILT</b>	7 PM

#### MARCH

3	at Mississippi State	2 PM
6-10	SEC Tournament	TBD

^ - Daytona Beach Classic; \* - SEC/ACC Challenge; % - Bill Snyder Classic (St. Joe, Mo.) Home games listed in **BOLD CAPS**; All times Central and subject to change

### SOCIAL MEDIA

- X..... @MizzouAthletics | @MizzouWBB | @CoachPingeton
- Hashtag.....#MIZ
- Instagram..... @MizzouAthletics | @MizzouWBB
- Facebook.....MizzouAthletics | MizzouWBB

### STRATEGIC COMMUNICATIONS

Phone (C):.....507-218-5026  
 Email:.....tlowe@mizzouri.edu  
 Web:.....MUTigers.com

Research included in Mizzou's weekly notes produced by Toby Lowe, Sam Collins, Sam Harner, Andrew Melroe, RJ Layton, Bob Brendal

GAME  
**19**

### MISSOURI

11-7, 2-3 SEC

SUNDAY, JAN 21, 2024 • 1 P.M. CT • RUPP ARENA • LEXINGTON, KY.

AT

### KENTUCKY

8-10, 1-3 SEC



#### MISSOURI TIGERS

Head Coach Robin Pingeton

Record at Mizzou 236-188 (14th Year)

Overall Record 571-345 (28th Year)



#### KENTUCKY WILDCATS

Head Coach Kyra Elzy

Record at School 57-50 (4th Year)

Overall Record 57-50 (4th Year)

#### GAME INFORMATION

Facility Rupp Arena

Capacity 20,545

TV SECN+

Radio KTGR / 1580 AM / 105.1 FM

Online The Varsity Network: "Search Mizzou"

Series Record UK leads, 11-5

On the Road UK leads, 6-1

Last Meeting UK won, 77-54 (1.29.23)

#### SERIES BREAKDOWN

Missouri Women's Basketball travels to Kentucky to face with Wildcats after defeating Georgia on Thursday to mark its second consecutive SEC victory. Kentucky leads the all-time series between the programs 11-5 including a 6-1 record in Lexington.

#### PREGAME PRESS

- Sunday will be the Tigers first game ever in Rupp Arena
- Hayley Frank led Missouri against Georgia with 24 points, the forward needs 47 to pass Julie Helm (1996-00) for fourth on the program's career scoring list
- Mama Dembele currently ranks first in the SEC with 7.0 assists per game (T3rd nationally) and second in the conference with 3.4 steals (7th nationally)
- Dembele is 13 assists shy of passing Sophie Cunningham (15-19) for fourth on Mizzou's all-time leaderboard
- Mizzou generates much of its offense from beyond the arc, ranks second in the SEC (28th nationally) in 3-point percentage (36.6%) and 19th in the country (2nd in SEC) with 8.8 makes per contest
- Frank has drawn 26 charges on the year
- Grace Slaughter scored 16 points against Georgia and ranks third among SEC freshmen in scoring at 11.4 points per game
- Frank leads the SEC and ranks 12th nationally in free-throw percentage (90.5%). The forward held a streak of 34 consecutive makes at the free-throw line from Nov. 24 - Dec. 17.
- Slaughter (42.9%) and freshman Abbey Schreacke (41.4%) rank 5th and 6th respectively in the SEC in 3-point percentage

### STARTING LINEUPS

#### PROBABLE STARTERS

#	NAME	POS	HT	YR	PPG	RPG	APG	FG%	3FG%
4	Mama Dembele	G	5-8	Sr.	9.6	4.9	7.0	.426	.292
0	Grace Slaughter	G	6-2	Fr.	11.4	3.3	0.9	.494	.429
24	Ashton Judd	G	6-1	So.	13.5	6.3	1.6	.421	.322
43	Hayley Frank	F	6-1	Sr.	16.9	6.8	1.9	.471	.385
34	Hannah Linthacum	F	6-4	Fr.	3.7	2.7	0.4	.575	.333

#### OFF THE BENCH

#	NAME	POS	HT	YR	PPG	RPG	APG	FG%	3FG%
5	Hilke Fredrappe	F	6-3	Fr.	2.2	1.2	0.9	.378	.200
7	Lucija Milkovic	C	6-6	Fr.	1.2	0.8	0.3	.375	.500
20	Sarah Linthacum	F	6-3	Jr.	0.9	1.6	0.1	.500	-
21	Averi Kroenke	G	5-11	So.	-	-	-	-	-
23	Abbey Schreacke	G	6-0	Fr.	7.9	3.3	1.7	.481	.414
30	Angelique Ngalakulondi	F	6-2	Sr.	5.3	4.5	0.8	.486	.000
40	Micah Linthacum	F	6-4	R-Sr.	0.8	0.8	0.0	.667	-
43	Abby Feit	F	6-1	Gr.	7.0	3.6	1.2	.447	.356
1	De'Myla Brown								

NCAA TRANSFER GUIDELINES

2023-24 MISSOURI WOMEN'S BASKETBALL

TV/RADIO CHART

0		<b>GRACE SLAUGHTER</b> G • 6-2 • FR. GRAIN VALLEY, MO.	<b>PPG</b>	<b>RPG</b>	<b>APG</b>	<b>FG%</b>	<b>3FG%</b>	<b>FT%</b>
			11.4	3.3	0.9	.494	.429	.786
			<b>LAST GAME:</b> 16 vs Georgia [1/18/2024]			<b>CH SCORING:</b> 21 vs St Louis [11/12/23]		
1		<b>DE'MYLA BROWN</b> G • 5-7 • GR. NORTH LITTLE ROCK, ARK.	<b>PPG</b>	<b>RPG</b>	<b>APG</b>	<b>FG%</b>	<b>3FG%</b>	<b>FT%</b>
			-	-	-	-	-	-
			NCAA TRANSFER GUIDELINES					
4		<b>MAMA DEMBELE</b> G • 5-6 • SR. MANLLEU, SPAIN	<b>PPG</b>	<b>RPG</b>	<b>APG</b>	<b>FG%</b>	<b>3FG%</b>	<b>FT%</b>
			9.6	4.9	7.0	.426	.292	.804
			<b>LAST GAME:</b> 6 vs Georgia [1/18/2024]			<b>CH SCORING:</b> 34 at Lehigh [11/28/21]		
5		<b>HILKE FELDRAPPE</b> F • 6-3 • FR. BERLIN, GERMANY	<b>PPG</b>	<b>RPG</b>	<b>APG</b>	<b>FG%</b>	<b>3FG%</b>	<b>FT%</b>
			2.2	1.2	0.9	.378	.200	.286
			<b>LAST GAME:</b> 2 vs Georgia [1/18/2024]			<b>CH SCORING:</b> 11 vs KANSAS CITY [12/21/23]		
7		<b>LUCIJA MILKOVIC</b> C • 6-6 • FR. SIBENIK, CROATIA	<b>PPG</b>	<b>RPG</b>	<b>APG</b>	<b>FG%</b>	<b>3FG%</b>	<b>FT%</b>
			1.2	0.8	0.3	.375	.500	.000
			<b>LAST GAME:</b> 2 at KANSAS CITY [12/21/23]			<b>CH SCORING:</b> 3 vs Indiana State [11/9/23]		
14		<b>ABBY FEIT</b> F • 6-1 • GR. NORMAL, ILL.	<b>PPG</b>	<b>RPG</b>	<b>APG</b>	<b>FG%</b>	<b>3FG%</b>	<b>FT%</b>
			7.0	3.6	1.2	.447	.356	.813
			<b>LAST GAME:</b> 4 vs Georgia [1/18/2024]			<b>CH SCORING:</b> 25 at NC State [1/12/20]		
20		<b>SARAH LINTHACUM</b> F • 6-3 • JR. JEFFERSON CITY, MO.	<b>PPG</b>	<b>RPG</b>	<b>APG</b>	<b>FG%</b>	<b>3FG%</b>	<b>FT%</b>
			0.9	1.6	0.1	.500	.000	.500
			<b>LAST GAME:</b> 0 vs Georgia [1/18/2024]			<b>CH SCORING:</b> 24 vs. Arkansas [1/8/23](3/3/22)		
21		<b>AVERI KROENKE</b> G • 5-11 • SO COLUMBIA, MO. / LINCOLN, MO.	<b>PPG</b>	<b>RPG</b>	<b>APG</b>	<b>FG%</b>	<b>3FG%</b>	<b>FT%</b>
			-	-	-	-	-	-
			<b>LAST GAME:</b>			<b>CH SCORING:</b> 9 vs. Bradley [11/10/22]		
23		<b>ABBEY SCHRECKE</b> G • 6-0 • FR. QUINCY, ILL.	<b>PPG</b>	<b>RPG</b>	<b>APG</b>	<b>FG%</b>	<b>3FG%</b>	<b>FT%</b>
			7.9	3.3	1.7	.481	.414	.542
			<b>LAST GAME:</b> 5 vs Georgia [1/18/2024]			<b>CH SCORING:</b> 17 vs Indiana State [11/9/23]		
24		<b>ASHTON JUDD</b> G • 6-1 • SO. WEST PLAINS, MO.	<b>PPG</b>	<b>RPG</b>	<b>APG</b>	<b>FG%</b>	<b>3FG%</b>	<b>FT%</b>
			13.5	6.3	1.6	.421	.322	.786
			<b>LAST GAME:</b> 6 vs Georgia [1/18/2024]			<b>CH SCORING:</b> 31 vs Indiana State [11/9/23]		
30		<b>ANGELIQUE NGALAKULONDI</b> F • 6-2 • GR. MANCHESTER, N.H.	<b>PPG</b>	<b>RPG</b>	<b>APG</b>	<b>FG%</b>	<b>3FG%</b>	<b>FT%</b>
			5.3	4.5	0.8	.486	.000	.615
			<b>LAST GAME:</b> 8 at Virginia [11/30/23]			<b>CH SCORING:</b> 14 vs. Tennessee [1/22/23]		
34		<b>HANNAH LINTHACUM</b> F • 6-4 • FR. JEFFERSON CITY, MO.	<b>PPG</b>	<b>RPG</b>	<b>APG</b>	<b>FG%</b>	<b>3FG%</b>	<b>FT%</b>
			3.7	2.7	0.4	.575	.333	.692
			<b>LAST GAME:</b> 6 vs Georgia [1/18/2024]			<b>CH SCORING:</b> 20 vs KANSAS CITY [12/21/23]		
40		<b>MICAH LINTHACUM</b> F • 6-4 • R-SR. JEFFERSON CITY, MO.	<b>PPG</b>	<b>RPG</b>	<b>APG</b>	<b>FG%</b>	<b>3FG%</b>	<b>FT%</b>
			0.8	0.8	0.0	.667	.000	1.000
			<b>LAST GAME:</b> 0 at LSU [12/21/23]			<b>CH SCORING:</b> 12 vs. Omaha [12/9/22]		
43		<b>HAYLEY FRANK</b> F • 6-1 • GR. STRAFFORD, MO.	<b>PPG</b>	<b>RPG</b>	<b>APG</b>	<b>FG%</b>	<b>3FG%</b>	<b>FT%</b>
			16.9	6.8	1.9	.471	.385	.906
			<b>LAST GAME:</b> 24 vs Georgia [1/18/2024]			<b>CH SCORING:</b> 30 vs Kent State [11/25/23]		

2023-24 MISSOURI WOMEN'S BASKETBALL

QUICK FACTS

GENERAL INFORMATION

Name..... University of Missouri  
 Location ..... Columbia, Mo.  
 Founded ..... 1839  
 Nickname ..... Tigers  
 Enrollment.....30,667 [2023]  
 Colors..... Gold & Black  
 Arena..... Mizzou Arena [15,061]  
 Affiliation .....NCAA Division I  
 Conference ..... Southeastern (SEC)  
 President ..... Dr. Mun Y. Choi  
 Alma Mater ..... Illinois, 1987  
 Athletics Director..... Desiree Reed-Francois  
 Alma Mater..... UCLA, 1994

TEAM INFORMATION

2022-23 Overall Record ..... 18-14  
 2022-23 SEC Record..... 6-10 / 9th  
 Letterwinners Returning .....6  
 Letterwinners Lost .....4  
 Starters Returning.....2  
 Starters Lost.....3  
 Newcomers.....8

WOMEN'S BASKETBALL STAFF

Head Coach ..... Robin Pingeton [14th season]  
 Alma Mater .....St. Ambrose, 1990  
 Career Record..... 568-342  
 Record at Mizzou ..... 233-185  
 SEC Record..... 81-90  
 Assistant Head Coach.....Preston Beverly  
 Alma Mater ..... Virginia Military Insitute, 2006  
 Assistant Coach ..... Chris Bracey  
 Alma Mater ..... West Texas A&M, 2003  
 Assistant Coach ..... Jasmine James  
 Alma Mater ..... Georgia, 2013  
 Director of Basketball Operations .....Jenny Putnam  
 Alma Mater .....St. Ambrose, 2001  
 Special Assistant to the Head Coach .....Julia Ford  
 Alma Mater ..... Bentley, 2020

WOMEN'S BASKETBALL HISTORY

First varsity season..... 1974-75  
 All-Time Record..... 845-631  
 All-Time Home Record..... 473-201  
 All-Time Record at Mizzou Arena.....200-102 [19]  
 NCAA Appearances ..... 13  
 1982, 1983, 1984, 1985, 1986  
 1994, 2001, 2004, 2006  
 2016, 2017, 2018, 2019  
 Last NCAA Opponent..... Iowa (L, 68-52)  
 NCAA Iowa City Region, 2nd Round  
 WNIT Appearances .....9  
 2000, 2002, 2003, 2007, 2013  
 2014, 2015, 2020, 2021, 2022, 2023  
 Last WNIT Opponent ..... Kansas (W, 61-51)  
 Second Round

STRATEGIC COMMUNICATIONS

WBB Contact..... Toby Lowe  
 Cell ..... 507-218-5026  
 Email ..... tlowe@missouri.edu  
 Website ..... MUTigers.com  
 Social (TW / FB / IG).....@MizzouWBB

2023-24 MIZZOU WOMEN'S BASKETBALL ROSTER

NUMERICAL ROSTER

#	NAME	HT.	POS.	CL	HOMETOWN / HS / PREVIOUS SCHOOL
0	Grace Slaughter	6-2	G	Fr.	Grain Valley, Mo. / Grain Valley
1	De'Myla Brown	5-7	G	Gr.	North Little Rock, Ark. / North Little Rock / Houston
4	Mama Dembele	5-6	G	Jr.	Manlleu, Spain / IES Joaquim Blume
5	Hilke Feldrappe	6-3	F	Fr.	Berlin, Germany
7	Lucija Milkovic	6-6	C	Fr.	Sibenik, Croatia
14	Abby Feit	6-1	G/F	Gr.	Normal, Ill. / Normal Community / Evansville
20	Sarah Linthacum	6-3	F	So.	Jefferson City, Mo. / Jefferson City
21	Averi Kroenke	5-11	G	Fr.	Columbia, Mo. / Rock Bridge
23	Abbey Schreacke	6-0	G	Fr.	Quincy, Ill. / Quincy Norte Dame
24	Ashton Judd	6-1	G	Fr.	West Plains, Mo. / West Plains
30	Angelique Ngalakulondi	6-3	F	Gr.	Manchester, N.H. / Proctor Academy / UMass
34	Hannah Linthacum	6-3	F	Fr.	Jefferson City, Mo. / Jefferson City
40	Micah Linthacum	6-4	F	R-Jr.	Jefferson City, Mo. / Jefferson City
43	Hayley Frank	6-1	F	Sr.	Strafford, Mo. / Strafford

ALPHABETICAL ROSTER

#	NAME	HT.	POS.	CL	HOMETOWN / HS / PREVIOUS SCHOOL
1	De'Myla Brown	5-7	G	Gr.	North Little Rock, Ark. / North Little Rock / Houston
4	Mama Dembele	5-6	G	Jr.	Manlleu, Spain / IES Joaquim Blume
14	Abby Feit	6-1	F	Gr.	Normal, Ill. / Normal Community / Evansville
5	Hilke Feldrappe	6-3	F	Fr.	Berlin, Germany
43	Hayley Frank	6-1	F	Sr.	Strafford, Mo. / Strafford
24	Ashton Judd	6-1	G	Fr.	West Plains, Mo. / West Plains
21	Averi Kroenke	5-11	G	Fr.	Columbia, Mo. / Rock Bridge
34	Hannah Linthicum	6-3	F	Fr.	Jefferson City, Mo. / Jefferson City
40	Micah Linthacum	6-4	F	R-Jr.	Jefferson City, Mo. / Jefferson City
20	Sarah Linthacum	6-3	F	So.	Jefferson City, Mo. / Jefferson City
7	Lucija Milkovic	6-6	C	Fr.	Sibenik, Croatia
30	Angelique Ngalakulondi	6-2	F	Gr.	Manchester, N.H. / Proctor Academy / UMass
34	Da'Necia Trusty	6-3	F	R-Fr.	Houston, Texas / Alief Hastings
23	Abbey Schreacke	6-0	G	Fr.	Quincy, Ill. / Quincy Norte Dame
0	Grace Slaughter	6-2	G	Fr.	Grain Valley, Mo. / Grain Valley

COACHING STAFF

NAME	TITLE
Robin Pingeton	Head Coach
Preston Beverly	Assistant Coach
Chris Bracey	Assistant Coach
Jasmine James	Assistant Coach
Jenny Putnam	Director of Basketball Operations
Julia Ford	Special Assistant to the Head Coach
Winson Tam	Head Video Coordinator
Haley Troup	Graduate Assistant
London Foster	Graduate Assistant
Chante Stonewall	Graduate Assistant

PRONUNCIATION GUIDE

NAME	TITLE
Robin Pingeton	Pinge-ton
De'Myla Brown	Deh-MY-lah
Mama Dembele	Dem-BELL-ay
Hilke Feldrappe	Hi-kah fed-RAHP-peh (hill without the l)
Abby Feit	Fight
Micah Linthacum	Mike-ah lin-Thah-come
Lucija Milkovic	Loot-see-ah Milk-oh-vich
Angelique Ngalakulondi	gala-kuh-LON-dee
Averi Kroenke	CRON-key
Abbey Schreacke	Shrek

NOTING THE TIGERS

ROSTER RELOAD

- Missouri added eight newcomers during the offseason - Grace Slaughter, De'Myla Brown, Hilke Feldrappe, Lucija Milkovic, Abby Feit, Abbey Schreacke, Angelique Ngalakulondi, Hannah Linthacum.
- Grace Slaughter:** A McDonald's All-American, Slaughter was the No. 1 overall recruit in the state of Missouri and the No. 58 ranked player nationally.
- Hilke Feldrappe:** Played three seasons of professional basketball for ALBA Berlin and represented her home country of Germany in the FIBA U19 World Cup this summer.
- Lucija Milkovic:** Played the last four seasons for ZYK Sibenik in the Croatia Premier League; represented her home country in the FIBA U18 European Championships last July.
- Abby Feit:** Transferred from Evansville where she scored 1,612 points over four seasons with the Aces. Named to the MVC Second Team in 2022-23, the MVC First Team in 2021-22 and was named the conference freshman of the year following the 2019-20 season.
- Abbey Schreacke:** Three-time All-State player out of Quincy Notre Dame. Led Quincy to the Class 2A state championship in 2022. 2023 Illinois High School Association Player of the Year. Finished career as all-time leading scorer in Quincy Notre Dame history (2,507), passing Mizzou alum Jordan Frericks.
- Angelique Ngalakulondi:** Transferred to the Tigers following four seasons at UMass. Ranked first in the Atlantic 10 in field goal percentage (56.6%) with the Minutewomen. 2018 New Hampshire Gatorade Player of the Year.
- Hannah Linthacum:** Fourth generation Tiger who joins sisters Micah and Sarah on the Tigers roster. Missouri Class 5 player of the year out of Jefferson City High School. Totaled over 1,000 points and 1,000 rebounds during her prep career.

TO BE FRANK

- Hayley Frank returned to the Tigers for her fifth season.
- Frank was named to the Preseason All-SEC First Team by the leagues' coaches.
- Member of the 2022-23 All-SEC First Team.
- Led the Tigers and ranked eighth in the conference with 15.4 points per game last

season.

- Frank scored a career-high 30 points against Kent State (Nov. 25)
- Shot 46.6 percent from the field a season ago to rank sixth in the SEC
- Currently ranks fifth on Missouri's all-time scoring leaderboard with 1,879 points. She sits 46 points behind Julie Helm (1996-00) for fourth
- Frank ranks 11th in the conference in field-goal percentage 47.1% and 10th in the SEC in 3-point percentage 38.5%
- Represented Missouri on the SEC Basketball Leadership Council last summer.

A FAMILY AFFAIR

- Freshman Hannah Linthacum joined sisters Micah and Sarah on the Tigers 2023-24 roster
- The Linthacums are Fourth-generation Tigers with their great-grandfather, grandfather and father all having played football for Mizzou
- All three sister played their prep careers at Jefferson City High School
- The trio joins sibling pairings, the Porters (Bri and Cierra), Stocks (Morgan and Maddie) and Cunninghams (Sophie and Lindsey) during the Pingeton era.
- Hannah Linthacum scored a career best 20 points against Kanas City (Dec. 21)

JUDD'S JOURNEY

- Ashton scored a career-high 31 points behind seven 3-pointers against Indiana State (Nov. 9)
- Judd's scoring total marked the first time a Tiger has scored 30+ points in a contest since Lauren Hansen recorded 34 against Lehigh on Nov. 28, 2021
- She followed up the outing with 21 points against Saint Louis marking the first time in her young career that the West Plains, Mo. native has scored 20+ in consecutive contests
- Judd currently is tied for 16th in the conference in scoring (13.5)
- Judd averaged 7.4 points and 3.0 rebounds per game during her freshman season.
- Judd became the first Tiger since Mama Dembele to land on the All-SEC Freshman Team in 2022-23
- The West Plains, Mo. native, ranked third in the SEC and set a Missouri freshman record with a 44.9% 3-point percentage

TEAM STATS

MIZ		UK
11-7	OVERALL RECORD	8-10
2-3	Conf. Record	1-3
8-2	Home Record	8-3
2-3	Away Record	0-4
1-2	Neutral Record	0-3
69th	NET	167th
36th	SOS	47th
75.1	Points/Game	65.3
68.6	Points Against	73.1
.459	FG %	.408
.398	Opp. FG%	.466
.366	3-Point FG%	.276
.288	Opp 3-Point FG%	.323
8.8	3-Pointers/Game	4.5
.750	FT %	.651
38.6	Rebounds/Game	33.3
2.3	Rebound Margin	-3.1
15.6	Assists/Game	12.2
16.0	Turnovers/Game	16.3
13.9	Opp.Turnovers/Gm	15.9
-2.1	Turnover Margin	0.4
1.0	Ast/Turnover Ratio	0.7
7.3	Steals/Game	6.7
2.2	Blocks/Game	3.2

MIZZOU SCORING LEADERBOARD

PLAYER	POINTS
1. SOPHIE CUNNINGHAM (2015-19)	2,187
2. JONI DAVIS (1981-85)	2,126
3. RENEE KELLY (1983-87)	2,119
4. JULIE HELM (1996-00)	1,925
<b>5. HAYLEY FRANK (2019-PRES.)</b>	<b>1,879</b>
6. SHARON FARRAH (1975-79)	1,820
7. NANCY RUTTER (1974-78)	1,643
8. LORRAINE FERRET (1979-83)	1,624
9. EVAN UNRAU (2000-04)	1,597
10. ERIKA MARTIN (1992-96)	1,535

MIZZOU CAREER ASSISTS LEADERBOARD

PLAYER	ASSISTS
1. KERENSA BARR (99-03)	489
2. LIANNA DOTY (12-17)	483
3. AMY FORDHAM (90-94)	470
4. SOPHIE CUNNINGHAM (15-19)	390
<b>5. MAMA DEMBELE (20-Pres.)</b>	<b>378</b>
6. DEE-DEE POLK (82-84)	372
7. RAESHARA BROWN (07-11)	337
8. LATOYA BOND (02-06)	331
9. LISA ELLIS (84-88)	324
10. JONI DAVIS (81-85)	323

RECORD BY STARTING LINEUP

LINEUP	RECORD
Slaughter, Dembele, Frank, Ngalakulondi, Judd	5-3
Slaughter, Dembele, Frank, H. Linthacum, Judd	6-2
Slaughter, Dembele, Frank, Feit, Judd	0-1
Slaughter, Schreacke, Frank, H. Linthacum	0-1

**NOTING THE TIGERS**

- Judd Finished third on the team with 88 field goals Last season
- She was Named SEC Freshman of the Week on Feb. 21, 2023
- Scored in double figures four times during a five-game stretch

**GOING WITH GRACE**

- Following a 13-point effort against North Alabama (Nov. 12), Slaughter scored in double-figures in each of the four games of her collegiate tenure. She is the first to accomplish that statistical feat since Sophie Cunningham in 2015.
- Grace Slaughter scored 10 points and grabbed 10 rebounds in her collegiate debut. With the performance she became the first Tiger since Sophie Cunningham (11/13/15 - Missouri St.) to record a double-double in her opening contest
- Grace ranks third among SEC freshman in scoring at 11.4 points per game

**MAMA MAKIN' MOVES**

- Mama Dembele scored a career high 20 points in the Tigers victory over Illinois (Dec. 17)
- Dembele recorded a double-double in consecutive game for the first time in her career (Nov. 12-14)
- Dembele currently ranks first in the SEC with 7.0 assists per game (T3rd nationally) and second in the conference with 3.4 steals (7th nationally)
- The point guard recorded a career best 14 assists against Saint Louis (Nov. 12)

**SCOUTING THE SCHEDULE**

- Missouri's schedule features four games against in-state opponents.
- The Tigers competed in the Daytona Beach Classic where they faced Tennessee Tech (W, 66-65) (Nov. 24) and Kent State (Nov. 25) (L, 67-64).
- Mizzou will played Virginia in the inaugural SEC/ACC Challenge on Nov. 30 in Charlottesville, Va.
- The Tigers faced Kansas State in the first edition of the Bill Snyder Classic on Dec. 9. The contest was played in St. Joe, Mo. the hometown of the legendary football coach.
- Mizzou defeated Illinois in the annual Braggin' Rights showdown on Dec. 17.
- The Tigers open SEC play on the road against defending national champion LSU.
- Missouri was defeated by No. 1 South

Carolina in Mizzou Arena on Jan. 11.

- The 2023-24 regular season will conclude following a road matchup against Mississippi State on March 3.
- The SEC tournament will be played March 6-10 in Greenville, S.C.

**A LOOK BACK**

- Missouri finished the 2022-23 campaign with an 18-14 overall record and a second-round appearance in the WNIT.
- The postseason appearance marked the program's 10th in the last 11 seasons.
- The Tigers began the season 14-2 including a 3-0 start in SEC play.

**TOP OF THE CLASS**

- Mizzou posted an all-time record GPA of 3.621 during the 2023 fall semester
- Last year, Missouri achieved a program-record GPA of 3.571
- The mark was the highest in the SEC and ranked second among Power Five schools.
- Ashton Judd and Averi Kroenke landed on the 2022-23 SEC First-Year Academic Honor Roll.
- Micah Linthacum and Sarah Linthacum appeared on the 2022-23 SEC Winter Academic Honor Roll.
- Mama Dembele won a 2023 Arther Ashe Jr. Sports Scholar award for her combined efforts on the court and in the classroom.
- Missouri ranked No. 23 on the 2022-23 WBCA Academic Honor Roll.

**SIDELINE STAFF**

- The 2023-24 season will feature a new look for the Tigers on the sidelines as Pingeton added several additions to her coaching and support staff prior to the season.
- Shortly following the conclusion of last season, longtime assistant coach Jenny Putnman moved into a support staff role as the director of basketball operations.
- In May, Pingeton added Preston Beverly as an assistant coach.
- Beverly has over 15 years of coaching experience and spent the previous two seasons as the head coach of Evangel in Springfield, Mo.
- Beverly had previously spent time at Hofstra, William and Mary, Lincoln College of New England, Nyack College and Bowdoin College.
- Later in the month, Pingeton acquired Julia Ford as special assistant to the head coach.
- Prior to arriving in Columbia, Ford spent last season at Coastal Carolina.
- She spent the 2020-21 and 2021-22 seasons at Clemson.
- Ford previously played college basketball at Bentley under hall-of-fame coach Barbara Stephens.

- Coming from a basketball family, Ford's brother Andrew works in the Brooklyn Nets front office, her brother Dave is the director of operations for the WCC.
- Ford's father played collegiately at Providence coached at Manhattan College and Niagara, while her uncle Sean is the USA Basketball national team director.
- Ford's mother was a former cheerleader at Providence.
- In August, Winson Tam joined the Tigers as head video coordinator.
- Tam spent the previous year as a video assistant with the Seattle Storm.
- He has previously served in the collegiate ranks at Villanova.
- Originally from Hong Kong, Tam is trilingual speaking English, Cantonese, and Mandarin Chinese
- Haley Troup, Missouri's all-time leader in games played remains with the program in a graduate assistant role following the conclusion of her playing career last season.

**JUNGLE MAKEOVER**

- Mizzou Arena will feature several new facility enhancements this season.
- All seats in the home venue have been replaced changing colors from the original gold to black.
- A new video board has been installed at the center of the arena. The board measures at 16.4 feet by 24.6 feet. It also has two 5.75-foot by 16.4-foot underbelly displays. In total there is a 50% increase in overall screen size compared to the previous board.
- New LED lighting has been installed to enhance both the in-person and broadcast viewing of contests.

**TIGERS IN THE PROS**

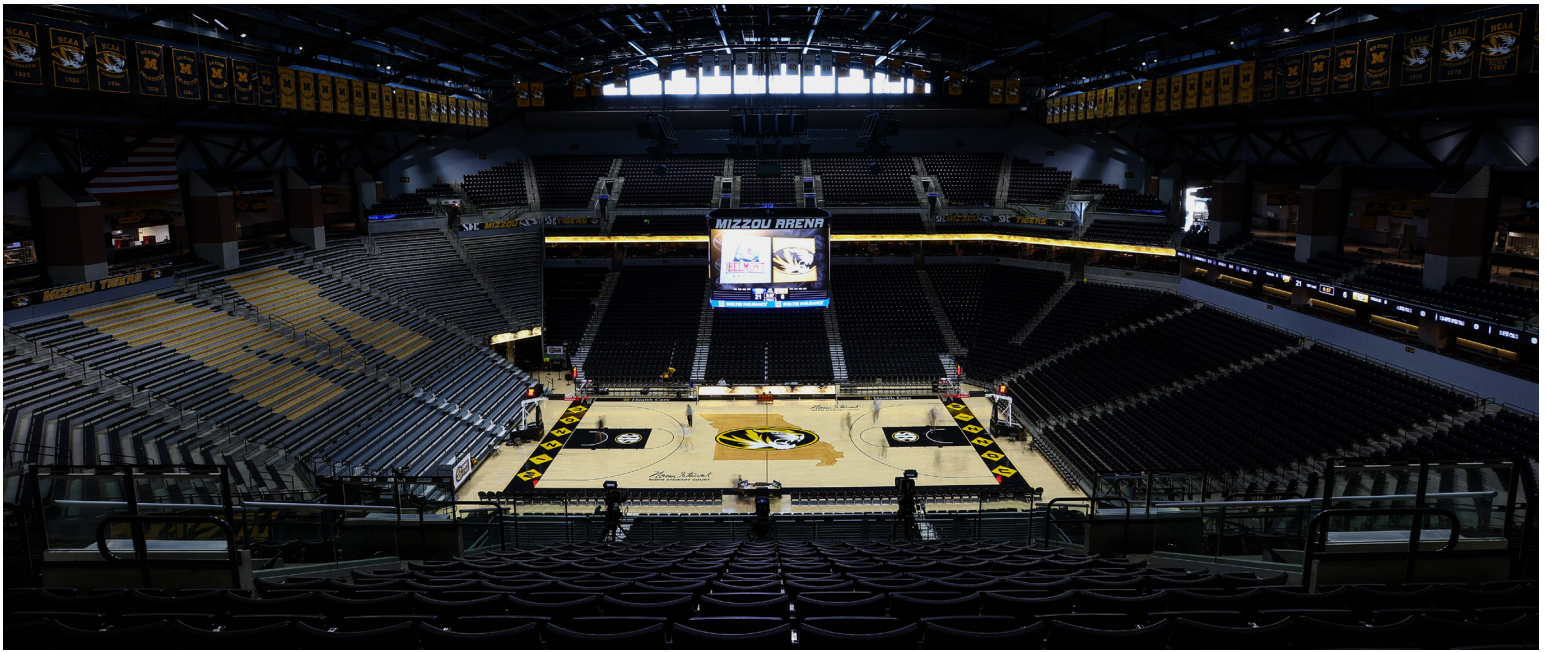
- 2019 Graduate Sophie Cunningham completed her fifth year with the Phoenix Mercury this summer.
- The round two pick 13 WNBA draft selection signed a new two-year deal with the professional organization in the offseason
- Cunningham averaged 11.3 and 2.8 rebounds last season.
- The Columbia native currently serves as an analyst for the Phoenix Suns pregame show on Bally Sports West.

**NIL INNOVATION**

- On July 6, 2023, Missouri Governor Mike Parsons signed groundbreaking NIL legislation. The new regulations benefiting Mizzou student-athletes are as follows:
- Allows individuals employed by, or closely associated with, universities in the state of Missouri to assist with negotiation of NIL deals on



**MIZZOU ARENA**



**BUILT: 1997 RENOVATED: 2023 CAPACITY: 15,061 OVERALL RECORD: 201-104**

**FACILITY NOTES**

- Built in 2004, Mizzou Arena has served as home to Missouri men's and women's basketball ever since.
- For nearly two decades Mizzou Arena has been one of the country's top home-court venues thanks to the state-of-the-art facilities, locker rooms and a full-length practice gym which is open to Tigers student-athletes 24/7.
- With a capacity over 15,000, Norm Stewart Court has become one of the toughest road venues in the SEC.
- Ahead of the 2023-24 season, Mizzou Athletics completed renovations to the arena that included a new video board, and brand new seats that were switch from gold to black.
- The video board measures at 16.4 feet by 24.6 feet. It also has two 5.75-foot by 16.4-foot underbelly displays.
- New led lighting has been installed to enhance both the in-person and broadcast viewing of contests
- A state-of-the-art projector system has been implemented to greatly enhance pregame entertainment. The projection will create a three dimensional look on the court.
- In 2021, new locker rooms for both teams were finished. The locker rooms included updated player lounges, private taping bays, dressing rooms and film rooms. The project also added audio, visual, and equipment charging stations as well as gaming equipment.
- Prior to the 2018-2019 season a complete remake of the Mizzou coaching offices was finished. Entryways and offices were renovated, providing fresh graphics and redesigns suited for

the needs of the men's and women's basketball staffs.

- Mizzou Arena is also home to a private Athletic Performance Center, built specifically to train basketball athletes. The performance center has strength training and cardio equipment designed specifically by the strength staff to maximize student-athletes abilities on and off the court.
- Across the hall from the performance center holds the Mizzou Athletic Training room. The training room comes complete with aqua therapy and hydro pools, as well as treatment tables and offices for Mizzou Sports Medicine.
- Nutritional needs can also be met at Mizzou Arena, as both locker rooms have nutrition stations to enhance the recovery of the student-athletes.
- During the offseason, Mizzou Arena serves as Central Missouri's market venue for concerts, high school state championships, and many other events.

**ATTENDANCE RECORDS AT MIZZOU ARENA**

DATE	OPP.	RESULT	ATT.
1. 2/18/18	TENNESSEE	W, 77-73	11,092
2. 2/17/19	TENNESSEE	L, 62-60	8,559
3. 1/14/16	TENNESSEE	L, 71-55	7,989
4. 12/16/04	STANFORD	L, 71-55	7,585
5. 1/31/04	COLORADO	L, 68-66	7,154
6. 3/3/19	ALABAMA	W, 82-47	6,527
7. 12/29/15	CHARLOTTE	W, 88-71	6,154
8. 12/30/21	S. CAROLINA	W, 70-69	6,139
9. 2/28/16	VANDERBILT	L, 56-52	5,998
10. 1/24/16	FLORIDA	W, 79-64	5,941

**AVERAGE ATTENDANCE IN PINGETON ERA**

SEASON	ATTENDANCE
2010-11	1,538
2011-12	1,539
2012-13	1,393
2013-14	1,419
2014-15	1,696
2015-16	3,990
2016-17	3,117
2017-18	4,366
2018-19	4,669
2019-20	3,832
2020-21	1,708
2021-22	1,956
2022-23	2,462

2023-24 MISSOURI WOMEN'S BASKETBALL

TIGER TALLIES

INSIDE THE NUMBERS

DOUBLE-DIGIT SCORING	2023-24	CAREER
HAYLEY FRANK	16	111
ASHTON JUDD	13	23
MAMA DEMBELE	10	10
GRACE SLAUGHTER	10	10
ABBEY SCHREACKE	7	7
ABBY FEIT	5	5
HANNAH LINTHACUM	1	1
HILKE FELDRAPPE	1	1

20-29+ POINT GAMES	2023-24	CAREER
HAYLEY FRANK	6	30
ASHTON JUDD	4	4
GRACE SLAUGHTER	1	1
MAMA DEMBELE	1	1
HANNAH LINTHACUM	1	1

10-REBOUND GAME	2023-24	CAREER
ASHTON JUDD	3	4
HAYLEY FRANK	1	4
GRACE SLAUGHTER	1	1

GAMES AS MIZZOU'S LEADING SCORER	2023-24
HAYLEY FRANK	10, (T3)
ASHTON JUDD	4, (T2)
MAMA DEMBELE	2, (T1)
GRACE SLAUGHTER	1
HANNAH LINTHACUM	1

GAMES AS MIZZOU'S LEADING REBOUNDER	2023-24
HAYLEY FRANK	8, (T1)
ASHTON JUDD	6, (T2)
ABBY FEIT	2, (T1)
MAMA DEMBELE	2
GRACE SLAUGHTER	1, (T1)
HILKE FELDRAPPE	1, (T1)
ANGELIQUE NGALAKULONDI	1, (T1)
ABBEY SCHREACKE	1, (T1)
HANNAH LINTHACUM	1, (T1)

GAMES WITH THE MOST POINTS OFF THE BENCH	2023-24
ABBEY SCHREACKE	10, (T1)
ABBEY FEIT	8
HANNAH LINTHACUM	1, (T1)

CRUNCHIN' THE NUMBERS

AFTER A WIN	5-4
AFTER A LOSS	4-3
LARGEST LEAD (HALF)	26 (VS. KANSAS CITY., DEC 21)
LARGEST DEFICIT (HALF)	13 (VS SOUTH CAROLINA, JAN 11)
LARGEST MARGIN (VICTORY)	45 (VS. SEMO., NOV 20)
LARGEST MARGIN (DEFEAT)	28 (VS K-STATE, DEC 9)
MOST POINTS (HALF)	51 (H1 VS VS. SOUTHERN IND., NOV 20)
FEWEST POINTS (HALF)	23 (H2 VS ALABAMA, JAN 7)
MOST POINTS (QUARTER)	29 (2Q VS. SOUTHERN IND., NOV 20)
FEWEST POINTS (QUARTER)	6 ( Q3 VS ALABAMA, JAN 7)

RECORD WHEN...

	2023-24
OVERALL	11-7
HOME	8-2
AWAY	2-3
NEUTRAL	1-2

CONFERENCE	2023-24
SEC	2-3
SEC HOME	1-2
SEC AWAY	1-1
SEC TOURNAMENT	0-0

SCORING	2023-24
SCORING 59 OR BELOW	0-2
SCORING 60-69	4-2
SCORING 70-79	1-1
SCORING 80-89	4-2
SCORING 90 OR MORE	2-0

OPPONENT SCORING	2023-24
OPPONENT SCORING 59 OR BELOW	4-0
OPPONENT SCORING 60-69	6-1
OPPONENT SCORING 70-79	2-0
OPPONENT SCORING 80-89	0-3
OPPONENT SCORING 90 OR MORE	0-2

INDIVIDUAL	2023-24
MIZZOU PLAYER SCORES 20+	8-4

REBOUNDING	2023-24
OUT REBOUNDING OPPONENT	8-0
OUT REBOUNDED	3-5
EQUAL REBOUNDS	0-2

TURNOVERS	2023-24
FEWER TURNOVERS	4-0
MORE TURNOVERS	7-7
EQUAL TURNOVERS	0-0

SHOOTING PERCENTAGE	2023-24
SHOOT 50% OR BETTER	5-1
SHOOT 45-49.9%	5-2
SHOOT 40-44.9%	1-1
SHOOT 39.9% OR LESS	0-3

OPPONENT SHOOTING PERCENTAGE	2023-24
OPPONENT SHOOTS 50% OR BETTER	0-3
OPPONENT SHOOTS 45-49.9%	0-2
OPPONENT SHOOTS 40-44.9%	1-2
OPPONENT SHOOTS 39.9% OR LESS	10-0

CRUNCHIN' THE NUMBERS

LEADING AFTER 1Q	9-2
TRAILING AFTER 1Q	1-5
TIED AFTER 1Q	1-0
LEADING AT THE HALF	8-1
TRAILING AT THE HALF	3-5
TIED AT THE HALF	0-1
LEADING AFTER 3Q	9-2
TRAILING AFTER 3Q	2-5
TIED AFTER 3Q	0-0
FINAL MARGIN 1-3	3-1
FINAL MARGIN 4-10	0-2
FINAL MARGIN 11-14	3-0
FINAL MARGIN 15 OR MORE	5-4
OVERTIME	0-1

SOUTHEASTERN CONFERENCE

2023-24 STANDINGS

	SEC		OVERALL	
	W	L	W	L
SOUTH CAROLINA	4	0	16	0
LSU	4	1	17	2
VANDERBILT	4	1	17	2
TENNESSEE	4	1	11	6
TEXAS A&M	2	2	14	3
ARKANSAS	2	2	14	5
OLE MISS	2	2	12	5
ALABAMA	2	3	15	5
MISSISSIPPI STATE	2	3	15	5
MISSOURI	2	3	11	7
FLORIDA	1	3	10	6
KENTUCKY	1	3	8	10
AUBURN	1	4	12	6
GEORGIA	1	4	10	8

2023-24 MISSOURI WOMEN'S BASKETBALL

GAME HIGHS AND LOWS

WEEKLY RANKINGS

ASSOCIATED PRESS TOP 25 (Jan. 14)

	TEAM	RECORD	PTS
1	SOUTH CAROLINA (36)	14-0	900
2	IOWA	17-1	843
3	COLORADO	15-1	814
4	NC STATE	15-1	777
5	UCLA	14-1	750
6	SOUTHERN CAL	13-1	744
7	KANSAS STATE	17-1	692
8	STANFORD	15-2	608
9	UCONN	14-3	597
10	LSU	16-2	537
11	TEXAS	16-2	515
12	BAYLOR	14-2	492
13	LOUISVILLE	15-2	460
14	VIRGINIA TECH	13-3	419
15	FLORIDA STATE	14-4	365
16	INDIANA	14-2	351
17	GONZAGA	16-2	345
18	OHIO STATE	13-3	336
19	NOTRE DAME	11-4	301
20	UTAH	12-5	187
21	CREIGHTON	13-3	144
22	MARQUETTE	15-2	129
23	NORTH CAROLINA	12-5	106
24	IOWA STATE	12-4	80
25	UNLV	14-1	69

WBCA TOP 25 COACHES POLL (Jan. 16)

	TEAM	RECORD	PTS
1	SOUTH CAROLINA	16-0	800
2	IOWA	17-1	763
3	COLORADO	15-1	726
4	SOUTHERN CALIFORNIA	13-1	692
5	NORTH CAROLINA STATE	15-1	656
5	UCLA	14-1	656
7	KANSAS STATE	17-1	591
8	STANFORD	15-2	549
9	LSU	16-2	516
10	CONNECTICUT	14-3	511
11	TEXAS	16-2	449
12	LOUISVILLE	15-2	444
13	BAYLOR	14-2	406
14	VIRGINIA TECH	13-3	368
15	OHIO STATE	13-3	343
16	INDIANA	14-2	341
17	GONZAGA	16-2	308
18	FLORIDA STATE	14-4	272
19	NOTRE DAME	12-3	231
20	UTAH	12-5	187
21	CREIGHTON	13-3	159
22	MARQUETTE	15-2	135
23	UNLV	14-1	83
24	NORTH CAROLINA	12-5	57
25	SYRACUSE	14-2	47

MIZZOU HIGHS & LOWS

INDIVIDUAL HIGHS

POINTS	31 (Judd Nov. 9)
REBOUNDS	13 (Judd, Dec 21)
ASSISTS	14 (Dembele, Nov. 12)
STEALS	10 (Dembele Nov. 12)
FG MADE	11 (Judd Nov. 9)
3-PT MADE	7 (Judd Nov. 9 )
FREE THROWS	11 (Frank, Nov. 25)
BLOCKS	2 (Frank, Nov. 30, Feit Jan 14)
TURNOVERS	8 (Judd, Nov. 14)

TEAM HIGHS

POINTS	98
POINTS (HALF)	51
POINTS (QUARTER)	29
REBOUNDS	54
ASSISTS	27
STEALS	13
FG MADE	36
FG ATTEMPTS	73
FG %	58.1%
FREE THROW %	100%
3-PT FG MADE	16
3-PT FG ATTEMPTS	32
3-PT FG%	59.3%
BLOCKS	5
TURNOVERS	25
FOULS	29

TEAM LOWS

POINTS	56
POINTS (HALF)	25
POINTS (QUARTER)	9
REBOUNDS	31
ASSISTS	6
STEALS	2
FG MADE	18
FG ATTEMPTS	56
FG %	29.0%
FREE THROW %	58.3%
3-PT FG MADE	2
3-PT FG ATTEMPTS	8
3-PT FG%	14.3%
BLOCKS	0
TURNOVERS	11
FOULS	10

OPPONENT HIGHS & LOWS

TEAM HIGHS

POINTS	93
POINTS (HALF)	54
POINTS (QUARTER)	36
REBOUNDS	48
ASSISTS	25
STEALS	19
FG MADE	36
FG ATTEMPTS	78
FG %	51.6%
FREE THROW %	87.5%
3-PT FG MADE	15
3-PT FG ATTEMPTS	34
3-PT FG%	53.3%
BLOCKS	7
TURNOVERS	22
FOULS	23

TEAM LOWS

POINTS	42
POINTS (HALF)	16
POINTS (QUARTER)	6
REBOUNDS	26
ASSISTS	6
STEALS	5
FG MADE	16
FG ATTEMPTS	60
FG %	26.1%
FREE THROW %	37.5%
3-PT FG MADE	3
3-PT FG ATTEMPTS	15
3-PT FG%	16.7%
BLOCKS	0
TURNOVERS	9
FOULS	9



THE LAST TIME...

TEAM

CATEGORY	GAME
WON BY 20+ POINTS	26, AT TEXAS A&M (2/20/2023)
WON BY 30+ POINTS	34, VS. SOUTHERN INDIANA (11/20/2023)
WON BY 40+ POINTS	43, VS. KANSAS CITY (12/21/2023)
LOST BY 20+ POINTS	24, VS. SOUTH CAROLINA (1/11/2024)
LOST BY 30+ POINTS	33, VS. NO.1/2 SOUTH CAROLINA (1/16/2020)
WON AN OVERTIME GAME	VS. AUBURN (72-63) (1/6/2022)
WON A DOUBLE OVERTIME GAME	VS. WESTERN ILLINOIS (72-69) (WNIT) (3/19/2003)
WON A ROAD OVERTIME GAME	AT OLE MISS (73-72) (1/20/2013)
WON HOME OVERTIME GAME	VS. AUBURN (72-63) (1/6/2022)
LOST HOME OVERTIME GAME	VS. NEBRASKA (85-90) (11/10/2019)
WON NEUTRAL OVERTIME GAME	VS. DRAKE (77-76) (NCAA TOURNAMENT) (3/22/2019)
SCORE 100+ POINTS	100, VS. OLE MISS (1/23/2017)
ALLOWED 100+ POINTS	101, AT NO.10/9 IOWA STATE (2/19/2000)
FOUR PLAYERS IN DOUBLE FIGURES	ASHTON JUDD (19), HAYLEY FRANK (17), GRACE SLAUGHTER (12), ABBY FEIT (11) AT VANDERBILT (1/14/2024)
FIVE PLAYERS IN DOUBLE FIGURES	H. FRANK (15), A. JUDD (12), G. SLAUGHTER (11), A. SCHREACKE (10), M. DEMBELE (10) VS. ALABAMA (1/7/2024)
SHOT 60% OR BETTER FROM THE FIELD	61.2% (30-49) VS. SOUTHERN ILLINOIS (12/20/2020)
SHOT 70% OR BETTER FROM THE FIELD	72.5% (50-69) VS. OKLAHOMA (1/22/1983)
SHOT 40% OR BETTER FROM BEHIND THREE-POINT LINE	40.9% (9-22) AT VANDERBILT (1/14/2024)
SHOT 50% OR BETTER FROM BEHIND THE THREE-POINT LINE	.500 (16-32) VS. SOUTHERN INDIANA (11/20/2023)
LAST TIME DID NOT MAKE A 3-POINTER	VS. OLE MISS (2/3/2022)
MADE 10+ THREE-POINTERS	10, VS. SOUTH CAROLINA (1/11/2024)
ATTEMPTED 30+ THREE-POINTERS	30, AT LSU (1/4/2024)
MADE 20+ FREE THROWS	25, AT FLORIDA (2/27/2022)
ATTEMPTED 35+ FREE THROWS	38, VS. NEBRASKA (11/10/20219)
50+ REBOUNDS IN A GAME	54, VS. KANSAS CITY (12/21/2023)
25 REBOUNDS OR LESS IN A GAME	25, VS. TENNESSEE (2/25/2021)
HAD 20+ ASSISTS	23, VS. SOUTHERN INDIANA (11/20/2023)
HAD 10+ STEALS	10, AT VANDERBILT (1/14/2024)
HAD LESS THAN 10 TURNOVERS	9, VS. WAKE FOREST (11/21/2022)

PLAYER

CATEGORY	GAME
SCORE 40+ POINTS	42, SOPHIE CUNNINGHAM VS. WAKE FOREST (11/22/2015)
SCORED 30+ POINTS	30, HAYLEY FRANK VS. KENT STATE (11/25/2023)
TWO PLAYERS SCORE 20+ POINTS	ASHTON JUDD (26), HAYLEY FRANK (26) VS. SOUTHERN INDIANA (11/20/2023)
TWO PLAYERS WITH 10+ REBOUNDS	GRACE SLAUGHTER (10), ASHTON JUDD (10) VS. BELMONT (11/6/2023)
POSTED A DOUBLE-DOUBLE	MAMA DEMBELE (10 PTS/10 AST) VS. ALABAMA (12/21/2023)
TWO PLAYERS WITH A DOUBLE-DOUBLE	ASHTON JUDD (20 PTS, 10 REB), MAMA DEMBELE (10 PTS/12 AST) VS. MISSOURI STATE (12/6/2023)
POSTED A TRIPLE-DOUBLE	CHRISTINE FLORES (25PTS/14REB/10BLKS) VS. EASTERN ILLINOIS (12/7/2011)
LED TEAM IN PTS/REB/STL	AIJHA BLACKWELL (20PTS/20REB/2STL) VS. ALABAMA A&M (12/12/2021)
MADE 10+ FIELD GOALS	10, HAYLEY FRANK VS. GEORGIA (1/18/2024)
MADE 5+ THREE-POINTERS	5, HAYLEY FRANK AT VANDERBILT (1/14/2024)
MADE 10+ FREE THROWS	11, HAYLEY FRANK VS. KENT STATE (11/25/2023)
ATTEMPTED 10+ FREE THROWS	11, HAYLEY FRANK VS. KENT STATE (11/25/2023)
HAD 15+ REBOUNDS	18, AIJHA BLACKWELL VS. MISSISSIPPI STATE (2/20/2022)
HAD 10+ ASSISTS	12, MAMA DEMBELE VS. MISSOURI STATE (12/6/2023)
HAD 5+ STEALS	6, MAMA DEMBELE AT VANDERBILT (1/14/2024)
HAD 5+ BLOCKS	5, LADAZHIA WILLIAMS AT FLORIDA (1/28/2021)
PLAYED 40+ MINUTES	HAYLEY FRANK (40), AT VANDERBILT (1/14/2024)

INDIVIDUAL GAME RECORDS / INDIVIDUAL SEASON RECORDS

PLAYER

CATEGORY	STAT	GAME
POINTS SCORED:	42	SOPHIE CUNNINGHAM VS. WAKE FOREST (11/22/15)
POINTS SCORED ON HOME COURT:	42	SOPHIE CUNNINGHAM VS. WAKE FOREST (11/22/15)
POINTS SCORED BY A FRESHMAN:	42	SOPHIE CUNNINGHAM VS. WAKE FOREST (11/22/15)
POINTS SCORED ON OPPONENT'S COURT:	40	NANCY RUTTER AT GRACELAND (1/5/77)
POINTS SCORED IN A LOSING EFFORT:	41	RENEE KELLY VS. OKLAHOMA (1/25/86)
POINTS SCORED BY OPPONENT:	39 (2X)	LYNETTE WOODARD [KANSAS] (2/15/80) AND KAREN CANNON [PHILLIPS] (1/9/76)
FIELD GOALS MADE:	17	RENEE KELLY VS. CHATTANOOGA (1/5/87)
FIELD GOALS ATTEMPTED:	32	JENNIE SKIMBO VS. SOUTHEASTERN LOUISIANA (11/25/79)
FIELD GOAL PCT. (MIN. 10 ATT.):	1.000	[13-OF-13], RENEE KELLY VS. OKLAHOMA STATE (1/14/86)
3-POINT FIELD GOALS MADE:	11	MORGAN EYE VS. AUBURN (1/6/13)
3-POINT FIELD GOALS ATTEMPTED:	18	MORGAN EYE VS. AUBURN (1/6/13); AT KANSAS STATE (3/22/15)
3-POINT FIELD-GOAL PERCENTAGE (MIN. 5 ATT.):	1.000 [6-OF-6]	HANNAH SCHUCHTS VS. DUKE (11/25/18)
3-POINT FIELD-GOAL PERCENTAGE (MIN. 5 ATT.):		[5-OF-5] - TRACY LOZIER AT NORTHERN IOWA (12/11/02)
3-POINT FIELD-GOAL PERCENTAGE (MIN. 5 ATT.):		LINDSEY CUNNINGHAM VS. ARKANSAS (02/12/17)
FREE THROWS MADE:	17	KERENSA BARR VS. DAVIDSON (11/25/01)
FREE THROWS ATTEMPTED:	21	RENEE KELLY VS. COLORADO (1/24/87)
FREE THROW PERCENTAGE (MIN. 10 ATT.):	1.000 [14-OF-14]	LISA PLUMMER VS. KANSAS (11/24/79), TRACY ELLIS VS. TENNESSEE TECH (12/12/87)
FREE THROW PERCENTAGE (MIN. 10 ATT.):	[11-OF-11]	CIERRA PORTER VS. KENTUCKY (01/30/17), CIERRA PORTER VS. ARKANSAS (2/28/19)
FREE THROW PERCENTAGE (MIN. 10 ATT.):	[11-OF-11]	HAYLEY FRANK VS. KENT STATE (11/23/23)
FREE THROW PERCENTAGE (MIN. 10 ATT.):	[10-OF-10]	SOPHIE CUNNINGHAM (3/22/19)
REBOUNDS:	23	KESHA BONDS VS. MISSOURI-ST. LOUIS (1/20/97)
ASSISTS:	15	DEE-DEE POLK VS. COLORADO (3/6/84)
STEALS:	11	AMANDA LASSITER AT SAN DIEGO STATE (11/27/99)

PLAYER

CATEGORY	STAT	OPPONENT
POINTS	776	JONI DAVIS (1984-85)
POINTS PER GAME	25.0	JONI DAVIS (1984-85)
FIELD GOALS MADE	326	JONI DAVIS (1984-85)
FIELD GOAL PERCENTAGE (MIN. 100 ATT.)	.612	KESHA BONDS (95-96)
3-POINT FIELD GOALS MADE	112	MORGAN EYE (2012-13)
3-PT FIELD GOALS ATTEMPTED	269	MORGAN EYE (2012-13)
3-PT PERCENTAGE (MIN. 30 ATT.)	.473	LINDEY CUNNINGHAM (2015-16)
FREE-THROWS MADE	211	NANCY RUTTER (1976-77)
FREE THROWS ATTEMPTED	280	NANCY RUTTER (1976-77)
FREE THROW PERCENTAGE (MIN. 50 ATT.)	.912	CARDOLYN SAVANT (2006-07)
REBOUNDS	395	RENEE KELLY (1985-86)
REBOUND AVERAGE	13.0	AIJHA BLACKWELL (2021-22)
BLOCKED SHOTS	93	CHRISTINE FLORES (2011-12)
ASSISTS	233	DEE-DEE POLK (1983-84)
STEALS	98	AMANDA LASSITER (2000-01)

2023-24 MISSOURI WOMEN'S BASKETBALL

SINGLE GAME TEAM RECORDS

TEAM

CATEGORY	STAT	OPPONENT
POINTS SCORED IN A HALF:	65	VS. BRADLEY (12/8/13)
FEWEST POINTS SCORED IN A HALF:	11	AT ARKANSAS (2/17/13)
POINTS BY OPPONENT IN A HALF:	66	VS. TEXAS (3/14/86)
FEWEST POINTS BY OPPONENT IN A HALF:	7	VS. SAINT LOUIS (2/12/78)
POINTS SCORED:	126	VS. BRADLEY (12/8/13)
POINTS SCORED ON HOME COURT:	126	VS. BRADLEY (12/8/13)
POINTS SCORED ON OPPONENT'S COURT:	119	AT BETHANY COLLEGE (1/3/77)
POINTS SCORED ON A NEUTRAL COURT:	103	VS. OREGON STATE AT PLAINVIEW, TEXAS (11/24/84)
POINTS SCORED IN A LOSING EFFORT:	111	VS. KANSAS [3 OTS] (1/29/83)
POINTS SCORED BY OPPONENT:	118	2X, USC (12/27/85) AND KANSAS [3 OTS] (1/29/83)
POINTS SCORED BY BOTH TEAMS:	229	VS. KANSAS [111/118 (3 OTS); (1/29/83)]
FEWEST POINTS SCORED:	33	4 TIMES, LAST VS. PRINCETON (12/18/19)
FEWEST POINTS BY OPPONENT:	21	BY BETHANY COLLEGE (1/3/77)
FEWEST POINTS (BOTH TEAMS):	63	VS. COLUMBIA COLLEGE [47-16] (11/22/74)
BIGGEST VICTORY MARGIN:	98 [119-21]	VS. BETHANY COLLEGE (1/3/77)
WORST MARGIN OF DEFEAT:	50	[118-68] VS. USC (12/27/85)
FIELD GOALS MADE:	58	VS. CLEVELAND STATE (11/17/85)
FIELD GOALS ATTEMPTED:	102	VS. BYU (12/14/85)
FIELD GOAL PERCENTAGE:	.725 [50-OF-69]	VS. OKLAHOMA (1/22/83)
3-POINT FIELD GOALS MADE:	18	VS. AUBURN (1/6/13), 18 VS. BRADLEY (12/8/13), 18, VS. FLORIDA (2/21/21)
3-POINT FIELD GOALS ATTEMPTED:	40	VS. LAMAR (12/20/15)
3-POINT FIELD GOAL PERCENTAGE (MIN. 10 ATT.):	.700	7-OF-10, AT NORTHERN IOWA (12/11/02)
FREE THROWS MADE:	38	VS. JACKSON STATE (12/28/94)
FREE THROWS ATTEMPTED:	52	VS. JACKSON STATE (12/28/94)
FREE THROW PERCENTAGE (MIN. 10 MADE):	1.000	3X, 21-OF-21 VS. OKLAHOMA (1/28/04), 10-OF-10 VS. UNF (11/20/11), 13-OF-13 AT ALABAMA (3/1/20)
REBOUNDS:	68	VS. CHICAGO STATE (12/13/91)
BLOCKED SHOTS:	14	VS. IOWA STATE (1983-84) AND VS. EASTERN ILLINOIS (12/7/11)
ASSISTS:	41	VS. CLEVELAND STATE (11/17/84)
STEALS	30	VS. MISSOURI STATE (11/22/1996)
PERSONAL FOULS	38	VS. KANSAS (1/29/1983)

HEAD COACH  
**ROBIN PINGETON**  
 14TH YEAR • ST. AMBROSE '90

**LEADING THE WAY**

Pingeton is entering her 14th season at Mizzou with four NCAA Tournament berths and 10 overall postseason appearances added to her resume during her time in Columbia.

Overall, Pingeton has led her teams to six NCAA Tournament berths and 19 postseason appearances.

**ALL SHE HAS DONE IS WIN**

She is 1-of-29 active Division-I head coaches with 500+ career wins, and just 1-of-14 at the helm of a Power Five program to reach the monumental milestone. Her 560 career victories currently rank second among active SEC head coaches.

**RESTORE THE ROAR**

Pingeton has restored a proud Mizzou Women's Basketball tradition and has recorded a 236-188 (.559) record with her teams reaching the 20-win total in four seasons.

In her first 14 seasons, she has guided the Tigers to 22 wins over top-25 teams and seven over teams ranked in the top 10.

On Dec. 30, 2021, Pingeton coached Missouri past No. 1 ranked South Carolina. The victory marked the Tigers' first win over the nation's top-seeded team in school history.

Among program history, Pingeton currently ranks second in winning percentage (.558) and victories (236), trailing only Mizzou Hall of Famer Joann Rutherford (.617, 423-261) in both categories.

**ON COURT SUCCESS**

In 26 years overall as a head coach, Pingeton's career record stands at 571-345 (.623). She has led her squads to postseason play 19 times and has mentored 44 All-Conference honorees, nine All-Americans, seven Academic All-Americans and five Conference Players of the Year.

She has won three regular season conference titles, two postseason conference tournaments and has three times been named Conference Coach of the Year.

**THE PINGETON RESUME**

Before Mizzou, Pingeton spent seven years leading the Illinois State Redbirds, where she amassed a 144-81 (.640) record. During her tenure, she led Illinois State to three Missouri Valley Conference Regular Season Titles, two MVC Tournament Championships, two NCAA Tournament berths and three WNIT appearances.

Prior to Illinois State, Pingeton spent three seasons as an assistant coach at Iowa State, including the 2002-03 season as the associate head coach. During her time in Ames, the Cyclones went 66-33 and made two NCAA Tournaments and won the 2001 Big 12 Tournament title.

Pingeton started her coaching career in 1992 at St. Ambrose, her alma mater. In eight seasons she helped qualify St. Ambrose for five NAIA National Tournaments including Elite Eight berths in 1996 and 2000.

**PINGETON PLAYING DAYS**

A 1990 graduate of St. Ambrose, Pingeton stands as the school's all-time scoring leader with 2,502 points and earned All-American honors in basketball and softball. She also played three seasons of professional basketball in the Women's Basketball Association.

**PERSONAL**

Pingeton and her husband, Rich, are the proud parents of two sons, Blake, born on June 9, 2006 and Zach, born July 5, 2011. In her limited spare time, Pingeton enjoys spending time with her family on their boat and playing golf.



**PERSONAL INFORMATION**

**Born:** July 9, 1968  
**Hometown:** Atkins, Iowa  
**Husband:** Rich  
**Children:** Blake, Zach  
**Education:** St. Ambrose, 1990  
**Twitter** @CoachPingeton  
**Instagram** @CoachPingeton

**COACHING CAREER**

YEAR	SCHOOL	POSITION
1992-00	St. Ambrose	Head Coach
2000-03	Iowa State	Associate Coach
2003-10	Illinois State	Head Coach
2010-pres.	Missouri	Head Coach

**HEAD COACHING RECORD**

YEAR	SCHOOL	OVERALL	CONF.	NOTABLE
1992-93	St. Ambrose	22-8 (.733)	22-8	MCC Tournament
1993-94	St. Ambrose	25-7 (.791)	10-2	NAIA First Round
1994-95	St. Ambrose	19-11 (.633)	0-0	N/A
1995-96	St. Ambrose	29-6 (.829)	14-0	NAIA Elite Eight
1996-97	St. Ambrose	27-7 (.794)	10-2	NAIA First Round
1997-98	St. Ambrose	19-15 (.559)	8-2	NAIA Sweet 16
1998-99	St. Ambrose	30-7 (.811)	11-1	NAIA Elite Eight
2003-04	Illinois State	16-13 (.552)	9-9	MVC Tournament
2004-05	Illinois State	13-18 (.419)	7-11	MVC Tourn. Champs, NCAA First Rd.
2005-06	Illinois State	12-16 (.429)	7-11	MVC Tournament
2006-07	Illinois State	22-11 (.667)	13-5	WNIT First Round
2007-08	Illinois State	26-7 (.788)	13-5	MVC Tourn. Champs, NCAA First Rd.
2008-09	Illinois State	27-8 (.771)	15-3	MVC Reg. Sea. Champs., WNIT Semi-Finals
2009-10	Illinois State	28-8 (.778)	16-2	MVC Reg. Sea. Champs., WNIT Semi-Finals
2010-11	Missouri	13-18 (.419)	5-11	Big 12 Tournament
2011-12	Missouri	13-18 (.419)	2-16	Big 12 Tournament
2012-13	Missouri	17-15 (.531)	6-10	WNIT First Round
2013-14	Missouri	17-14 (.548)	6-10	WNIT First Round
2014-15	Missouri	19-14 (.576)	7-9	WNIT Quarterfinals
2015-16	Missouri	22-10 (.688)	8-8	NCAA Second Round
2016-17	Missouri	22-11 (.667)	11-5	NCAA Second Round
2017-18	Missouri	24-8 (.750)	11-5	NCAA First Round
2018-19	Missouri	24-11 (.647)	10-6	NCAA Second Round
2019-20	Missouri	9-22 (.290)	5-11	SEC Tournament
2020-21	Missouri	9-13 (.409)	5-9	WNIT First Round
2021-22	Missouri	18-13 (.581)	7-9	WNIT First Round
2022-23	Missouri	18-14 (.562)	6-10	WNIT Second Round
2023-24	Missouri	9-7 (.692)	-	-
<b>TOTALS</b>	<b>Missouri</b>	<b>236-188</b>	<b>91-122</b>	
	<b>Career</b>	<b>571-345</b>	<b>246-64</b>	

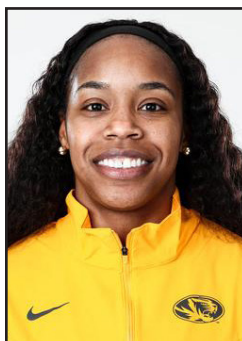


## ON THE BENCH


**CHRIS BRACEY**  
**ASSISTANT COACH**

SIXTH SEASON • WEST TEXAS A&amp;M '03

- In his sixth season as an assistant coach on Robin Pingeton's staff since joining the program prior to the 2018-19 season.
- Bracey spent eight seasons playing professional basketball in Europe before returning to his hometown of Chicago to coach high school basketball for five years.
- Bracey graduated with a Bachelor of Arts in Criminal Justice from West Texas A&M University and obtained a Master's of Arts in Teaching from National Louis University.


**JASMINE JAMES**  
**ASSISTANT COACH**

SECOND SEASON • GEORGIA '13

- Enters her second season as an assistant coach for the University of Missouri women's basketball staff.
- 2013 WNBA Draft pick and had a four-year professional career.
- As a collegiate player, James was a freshman All-American during the 2009-10 season at Georgia. She went on to earn second team All-SEC honors during the 2012-13 season.
- Spent two seasons on staff at Tennessee Tech, leading the Golden Eagles to Ohio Valley Conference Tournament Championship in 2022.


**PRESTON BEVERLYLY**  
**ASSISTANT COACH**

FIRST SEASON • VMI '06

- An experienced veteran in the coaching realm with over 15 years spent on the sidelines, Beverlyly came to the Tigers after two seasons as the head coach of Evangel where he led the Valor to consecutive appearances in the Heart Tournament quarterfinals.
- Beverlyly spent the 2019-20 season as an assistant at Hofstra.
- From 2015-19, Beverly coached at Richard Bland College of William & Mary while also working as the assistant athletic director.


**JENNY PUTNAM**  
**DIRECTOR OF BASKETBALL OPERATIONS**

14th SEASON • ST. AMBROSE '01

- Spent 14 years as an assistant coach on Robin Pingeton's staff.
- Transitioned to the role of Director of Basketball Operations prior to the season.
- Recognized as a top recruiter, Putnam was instrumental in recruiting and signing Mizzou's heralded 2015 freshman class that was ranked 17th nationally by Prospect Nation.
- Played collegiately at St. Ambrose under Pingeton.
- A native of Moline, Ill., Putnam has three sons, Jack, Tyler and Callen.


**JULIA FORD**  
**SPECIAL ASSISTANT TO THE HEAD COACH**

FIRST SEASON • BENTLEY '20

- Spent last season as an assistant coach at Coastal Carolina last season. With the Chanticleers, she led the development of two All-Sun Belt honorees.
- Served as a graduate assistant for two seasons at Clemson.
- Ford played basketball at Bentley University under Hall of Fame coach Barbara Stevens.
- Brother Andrew works in the Brooklyn Nets front office, Dad Dave coached at Mannhattan and Niagara, Uncle Sean is the USA Basketball National Team Director, Brother Dave is the director of operations for the WCC.


**WINSON TAM**  
**HEAD VIDEO COORDINATOR**

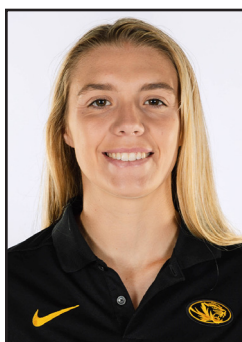
FIRST SEASON • DREXEL '20

- Came to Mizzou in August after two years as a video assistant with the WNBA team Seattle Storm under the fame coach Noelle Quinn.
- Tam spent one year at Villanova University, where he contributed to the women's basketball team under head coach Denise Dillon.
- A 2020 graduate of Drexel University, Tam received a bachelor's degree in sport management while he served as a team manager for the women's basketball team.
- A native of Hong Kong, Tam is trilingual, speaking English, Cantonese and Mandarin Chinese.


**CHANTE STONEWALL**  
**GRADUATE ASSISTANT**

SECOND SEASON • DEPAUL '20

- In her second season on the Mizzou women's basketball staff as a graduate assistant after joining the program in May of 2022.
- A decorated athlete at DePaul, Stonewall closed her career with All-America Honorable Mention acclaim (AP, WBCA, USBWA) as well as All-Big East First Team and Defensive Player of Year honors. She led the 2020 DePaul squad in scoring (17.4 PPG) on a roster that ranked No. 2 nationally in points per game, assists and made 3-pointers per game.
- Played professional basketball overseas in France and Hungary.


**HALEY TROUP**  
**GRADUATE ASSISTANT**

FIRST SEASON • MISSOURI '23

- In her sixth season with the Missouri Women's Basketball since starting her playing career during the 2017-18 season.
- Led the Tigers to 101 wins, a feat that ranks third-all in Missouri history, four postseason appearances and two trips to the NCAA Tournament. Was a member of back-to-back 24-win seasons from 2017-19.
- A two-time graduate of Missouri, Troup holds a master's of education with an emphasis in positive coaching and a bachelor's degree in parks, recreation, sport and tourism with an emphasis in sport management.


**LONDON FOSTER**  
**GRADUATE ASSISTANT**

FIRST SEASON • AVILA '23

- Foster begins her first season at Missouri after joining the Tigers as a graduate assistant in August of 2023.
- Spent the last four years playing collegiately at Avila University in Kansas City, Mo.
- Prior to Avila, she had a pair of one-year stints at John A. Logan College and the College of Wooster, respectively.
- A 2023 graduate of Avila, Foster holds a bachelor's of science in kinesiology.


**ALLISON MOSEL**  
**ATHLETIC TRAINER**

12TH SEASON • DAKOTA WESLEYAN '01

- Came to Mizzou in the Fall 2012 to serve as the athletic trainer for women's basketball. She was promoted to a senior associate director of sports medicine role in fall 2021.
- Serves on the SEC Sports Medicine Scholarship Committee, Mizzou Athletics Committee on Inclusive Excellence (MAICE), Tiger Leadership Institute.
- Holds a master's degree (MSEd.) in health and physical education from Northwest Missouri State.

SUPPORT STAFF



**TYLER STUART**  
**ASSISTANT DIRECTOR ATHLETIC PERFORMANCE**  
 THIRD SEASON • ANDERSON UNIVERSITY '07

- Joined the University of Missouri Athletic Performance staff in the summer of 2021 as an assistant athletic performance Coach.
- Stuart came to Mizzou following one season at the University of Cincinnati, where he worked with men's basketball and tennis.
- Served three seasons (2017-20) as the director of strength and conditioning for the University of New Mexico's men's basketball program
- He is married to Elizabeth Stuart, a registered dietitian with Mizzou Football, and the couple has two sons; Jack and Graham.



**RACHEL BLUNT**  
**SPORT ADMINISTRATOR**  
 SECOND SEASON • SEMO '09

- Served as the Deputy Athletic Director/Administration and Senior Woman Administrator at Central Michigan University
- Assistant AD/Compliance at Southeast Missouri State University from 2013-16.
- Blunt played four years of basketball at SEMO, helping the Redhawks to back-to-back Ohio Valley Conference Championships in 2007 and 2008. She has two degrees from SEMO, earning a bachelor's degree in sport management in 2009 and a master's in finance in 2011.



**ALYSSA BLAIR**  
**SPORT ADMINISTRATOR (SECONDARY)**  
 SECOND SEASON • FGCU '21

- Came to Mizzou in May of 2021 as Assistant Director of the Tiger Scholarship Fund, promoted to Director of TSF in August.
- In her first season serving as the secondary sport administrator for the women's basketball program.
- Two time graduate of Florida Gulf Coast University with a bachelors degree in accounting and masters of business administration in data analytics.
- Played collegiately at FGCU from 2017-21. Finished 14th on the program's career games played list.



**JESSICA BUSER**  
**ACADEMIC SERVICES**  
 SEVENTH SEASON • NEBRASKA

- Joined the Mizzou Made Academics staff in June 2017 and currently serves as Assistant Director.
- Previously held the position of Tutoring and Retention Coordinator at the University of Iowa and has also worked with the tutoring program in Athlete Services at Kansas State University.
- Earned BA and MA degrees from the University of Nebraska-Lincoln and was a graduate instructor for six years at Florida State University. Jessica and her husband Patrick have two children, Henry and Emilia.



**TOBY LOWE**  
**ASSOCIATE DIRECTOR OF STRATEGIC COMMUNICATION**  
 SECOND SEASON • MISSOURI '20

- Enters his second season as the primary communication's contact for the women's basketball program.
- Prior to arriving in Columbia, he served as a communications assistant with the Louisiana Ragin' Cajuns overseeing the men's basketball program and a secondary role with the football program.
- Worked as a graduate assistant with VCU Athletics in 2020-21 while obtaining a masters of Sport Leadership.
- A 2020 graduate of Mizzou with a bachelor's of arts in journalism with an emphasis in strategic communication.



**CARSON LUTTENEGGER**  
**ASSISTANT DIRECTOR OF MARKETING**  
 SECOND SEASON • IOWA STATE '22

- In his second season with the Tigers and first year with the Mizzou women's basketball program serving as the marketing coordinator.
- Previously worked as an athletic marketing intern at Iowa State from 2021-22
- Graduated from ISU with a bachelors of science - logistics, materials, and supply chain management

**GRACE SLAUGHTER**



GUARD • 6-2 • FRESHMAN • HEALTH SCIENCES • GRAIN VALLEY, MO.



**SEASON/CAREER HIGHS**

**POINTS**

SEASON: 21, VS. SLU (11/12/23)

CAREER: 21, VS. SLU (11/12/23)

**FIELD GOALS**

SEASON: 9, VS. SLU (11/12/23)

CAREER: 9, VS. SLU (11/12/23)

**FIELD GOAL ATTEMPTS**

SEASON: 14, VS. NORTH ALABAMA (11/14/23)

CAREER: 14, VS. NORTH ALABAMA (11/14/23)

**3-POINTERS**

SEASON: 3 (3X), LAST VS. GEORGIA (1/18/24)

CAREER: 3 (3X), LAST VS. GEORGIA (1/18/24)

**3-POINT ATTEMPTS**

SEASON: 7 (2X), LAST VS. KANSAS STATE (12/9/23)

CAREER: 7 (2X), LAST VS. KANSAS STATE (12/9/23)

**FREE THROWS**

SEASON: 3, VS. INDIANA STATE (11/9/23)

CAREER: 3, VS. INDIANA STATE (11/9/23)

**FREE THROW ATTEMPTS**

SEASON: 3, VS. INDIANA STATE (11/9/23)

CAREER: 3, VS. INDIANA STATE (11/9/23)

**ASSISTS**

SEASON: 4, VS. SOUTHERN INDIANA (11/20/23)

CAREER: 4, VS. SOUTHERN INDIANA (11/20/23)

**BLOCKS**

SEASON:

CAREER:

**REBOUNDS**

SEASON: 10, VS. BELMONT (11/6/23)

CAREER: 10, VS. BELMONT (11/6/23)

**STEALS**

SEASON: 2, AT ILLINOIS (12/17/23)

CAREER: 2, AT ILLINOIS (12/17/23)

**MINUTES**

SEASON: 40, VS. VIRGINIA (11/30/23)

CAREER: 40, VS. VIRGINIA (11/30/23)

@graciekkay10

@grace.slaughter

- 2023 MISSOURI GATORADE PLAYER OF THE YEAR
- MCDONALDS ALL-AMERICAN
- WON GOLD AS A MEMBER OF THE 2021 U16 JR. OLYMPIC TEAM
- MISSOURI CLASS 6 PLAYER OF THE YEAR
- FOUR-TIME ALL-STATE HONOREE / FOUR-TIME ALL-DISTRICT AND ALL-CONFERENCE HONOREE
- MBCA CLASS 6 MISS MISSOURI SHOW-ME BASKETBALL
- ALL-TIME LEADING SCORER AT GRAIN VALLEY WITH 2,575 POINTSS
- THE FIRST TIGER TO RECORD A DOUBLE-DOUBLE IN A COLLEGIATE DEBUT SINCE SOPHIE CUNNINGHAM DID SO ON NOV. 13, 2015
- FIRST TIGER SINCE SOPHIE CUNNINGHAM TO SCORE DOUBLE-DIGIT POINTS FOR THE FOURTH STRAIGHT GAME TO START HER TIGER CAREER
- FIRST TRUE-FRESHMAN TO SCORE IN DOUBLE-FIGURES IN SEVEN OF HER FIRST NINE GAMES SINCE HAY-LEY FRANK

**GAME-BY-GAME STATS**

OPPONENT	DATE	ST.	MIN	PTS	REB	AST	STL	BLK	T/O	FG	FG%	3PT	3P%	FT	FT%	PF
VS. BELMONT	11/6/23	*	39	10	10	0	0	0	2	5-12	41.7	0-3	0.0	0-0	0.0	0
VS. INDIANA STATE	11/9/23	*	27	17	2	1	0	0	3	6-11	54.5	2-4	50.0	3-3	100.0	1
AT ST. LOUIS	11/12/23	*	38	21	0	0	0	0	2	9-12	75.0	3-4	75.0	0-0	0.0	3
VS. NORTH ALABAMA	11/14/23	*	34	13	8	2	0	0	3	6-14	42.9	0-1	0.0	1-1	100.0	0
VS. SOUTHERN INDIANA	11/20/23	*	24	6	5	4	0	0	2	2-8	25.0	0-2	0.0	2-2	100.0	1
TENNESSEE TECH	11/24/23	*	38	18	3	1	0	0	2	8-8	100.0	2-2	100.0	0-0	0.0	1
KENT STATE	11/25/23	*	36	7	4	2	0	0	1	3-12	25.0	1-7	14.3	0-0	0.0	0
AT VIRGINIA	11/30/23	*	40	17	3	2	0	0	3	6-9	66.7	3-5	60.0	2-2	100.0	1
VS. SEMO	12/2/23	*	25	11	5	0	0	0	2	5-8	62.5	1-3	33.3	0-0	0.0	1
VS. MISSOURI STATE	12/6/23	*	25	7	1	0	0	0	1	3-8	37.5	1-1	100.0	0-0	0.0	0
KANSAS STATE	12/9/23	*	29	6	2	0	0	0	1	2-10	20.0	2-7	28.6	0-0	0.0	1
AT ILLINOIS	12/17/23	*	34	8	4	0	2	0	2	4-9	44.4	0-3	0.0	0-0	0.0	1
VS. KANSAS CITY	12/21/23	*	28	6	3	0	0	0	0	3-7	42.9	0-1	0.0	0-0	0.0	0
AT LSU	1/4/24	*	25	7	0	1	0	0	1	3-7	42.9	1-2	50.0	0-0	0.0	1
VS. ALABAMA	1/7/24	*	25	11	1	0	1	0	3	5-7	71.4	1-3	33.3	0-0	0.0	2
VS. SOUTH CAROLINA	1/11/24	*	36	12	2	1	0	0	1	4-11	36.4	2-2	100.0	2-2	100.0	0
AT VANDERBILT	1/14/24	*	31	12	2	1	0	0	0	5-9	55.6	2-3	66.7	0-2	0.0	0
VS. GEORGIA	1/18/24	*	37	16	4	2	1	0	3	6-10	60.0	3-3	100.0	1-2	50.0	2
AT. KENTUCKY	1/21/24	-	-	-	-	-	-	-	-	-	-	-	-	-	-	-
VS. TEXAS A&M	1/25/24	-	-	-	-	-	-	-	-	-	-	-	-	-	-	-
VS. ARKANSAS	1/28/24	-	-	-	-	-	-	-	-	-	-	-	-	-	-	-
AT TENNESSEE	2/4/24	-	-	-	-	-	-	-	-	-	-	-	-	-	-	-
AT SOUTH CAROLINA	2/8/24	-	-	-	-	-	-	-	-	-	-	-	-	-	-	-
VS. AUBURN	2/11/24	-	-	-	-	-	-	-	-	-	-	-	-	-	-	-
AT ARKANSAS	2/18/24	-	-	-	-	-	-	-	-	-	-	-	-	-	-	-
AT FLORIDA	2/22/24	-	-	-	-	-	-	-	-	-	-	-	-	-	-	-
VS. OLE MISS	2/26/24	-	-	-	-	-	-	-	-	-	-	-	-	-	-	-
VS. VANDERBILT	2/29/24	-	-	-	-	-	-	-	-	-	-	-	-	-	-	-
AT MISSISSIPPI STATE	3/3/24	-	-	-	-	-	-	-	-	-	-	-	-	-	-	-

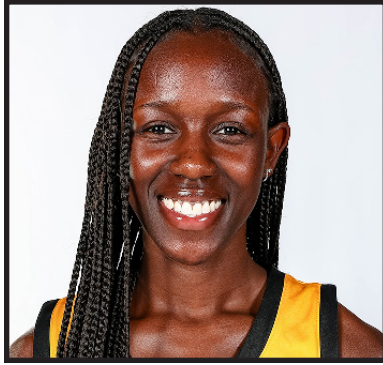
**CAREER STATS**

SEASON	G-GS	MIN	MPG	FG-A	FG%	3FG-A	3FG%	FT-A	FT%	O	D	REB / AVG	PF	FO	AST / TO	BS / S	TP	AVG.
2023-24	18-18	570	31.7	85-172	.494	24-56	.429	11-14	.786	15	44	59 / 3.3	15	0	17 / 32	0 / 4	205	11.4
<b>TOTALS</b>	<b>18-18</b>	<b>570</b>	<b>31.7</b>	<b>85-172</b>	<b>.494</b>	<b>24-56</b>	<b>.429</b>	<b>11-14</b>	<b>.786</b>	<b>15</b>	<b>44</b>	<b>59 / 3.3</b>	<b>15</b>	<b>0</b>	<b>17 / 32</b>	<b>0 / 4</b>	<b>205</b>	<b>11.4</b>

DE'MYLA BROWN



GUARD • 5-7 • GRADUATE • JOURNALISM • NORTH LITTLE ROCK, ARK./ HOUSTON



SEASON/CAREER HIGHS

POINTS

SEASON:  
CAREER: 22, VS. MIZZOU (12/22/21)

FIELD GOALS

SEASON:  
CAREER: 9, VS. MIZZOU (12/22/21)

FIELD GOAL ATTEMPTS

SEASON:  
CAREER: 21 VS. MIZZOU (12/22/21)

3-POINTERS

SEASON:  
CAREER: 3 (3x), LAST AT PENN STATE (1/16/22)

3-POINT ATTEMPTS

SEASON:  
CAREER: 8 (2x), LAST VS. OHIO STATE (1/6/22)

FREE THROWS

SEASON:  
CAREER: 6 (2x), LAST VS. PURDUE (1/20/22)

FREE THROW ATTEMPTS

SEASON:  
CAREER: 6 (2x), LAST VS. PURDUE (1/20/22)

ASSISTS

SEASON:  
CAREER: 4 (3x), LAST AT PENN STATE (1/16/22)

BLOCKS

SEASON:  
CAREER: 1 (3x), LAST VS. FLORIDA STATE (11/19/22)

REBOUNDS

SEASON:  
CAREER: 5, AT OHIO STATE (1/6/22)

STEALS

SEASON:  
CAREER: 5, AT PENN STATE (1/16/22)

MINUTES

SEASON:  
CAREER: 32, VS. MIZZOU (12/22/21)

@demylabrown

@demylabrown\_5

- INELIGIBLE FOR THE 2023-24 SEASON DUE TO NCAA TRANSFER REGULATIONS
- JOINED MISSOURI IN THE OFFSEASON FROM HOUSTON
- AVERAGED 5.9 POINTS AND 2.1 REBOUNDS LAST SEASON FOR THE COUGARS
- NJCAA ALL-AMERICAN AT CHIPOLA COLLEGE
- 2021 FCSAA STATE/NJCAA DISTRICT VIII TOURNAMENT MVP
- MCDONALD'S ALL-AMERICAN NOMINEE
- TWO-TIME ARKANSAS ALL-STATE (2018 & 2019)

GAME-BY-GAME STATS

OPPONENT	DATE	ST.	MIN	PTS	REB	AST	STL	BLK	T/O	FG	FG%	3PT	3P%	FT	FT%	PF
VS. BELMONT	11/6/23	-	-	-	-	-	-	-	-	-	-	-	-	-	-	-
VS. INDIANA STATE	11/9/23	-	-	-	-	-	-	-	-	-	-	-	-	-	-	-
AT ST. LOUIS	11/12/23	-	-	-	-	-	-	-	-	-	-	-	-	-	-	-
VS. NORTH ALABAMA	11/14/23	-	-	-	-	-	-	-	-	-	-	-	-	-	-	-
VS. SOUTHERN INDIANA	11/20/23	-	-	-	-	-	-	-	-	-	-	-	-	-	-	-
TENNESSEE TECH	11/24/23	-	-	-	-	-	-	-	-	-	-	-	-	-	-	-
KENT STATE	11/25/23	-	-	-	-	-	-	-	-	-	-	-	-	-	-	-
AT VIRGINIA	11/30/23	-	-	-	-	-	-	-	-	-	-	-	-	-	-	-
VS. SEMO	12/2/23	-	-	-	-	-	-	-	-	-	-	-	-	-	-	-
VS. MISSOURI STATE	12/6/23	-	-	-	-	-	-	-	-	-	-	-	-	-	-	-
KANSAS STATE	12/9/23	-	-	-	-	-	-	-	-	-	-	-	-	-	-	-
AT ILLINOIS	12/17/23	-	-	-	-	-	-	-	-	-	-	-	-	-	-	-
VS. KANSAS CITY	12/21/23	-	-	-	-	-	-	-	-	-	-	-	-	-	-	-
AT LSU	1/4/24	-	-	-	-	-	-	-	-	-	-	-	-	-	-	-
VS. ALABAMA	1/7/24	-	-	-	-	-	-	-	-	-	-	-	-	-	-	-
VS. SOUTH CAROLINA	1/11/24	-	-	-	-	-	-	-	-	-	-	-	-	-	-	-
AT VANDERBILT	1/14/24	-	-	-	-	-	-	-	-	-	-	-	-	-	-	-
VS. GEORGIA	1/18/24	-	-	-	-	-	-	-	-	-	-	-	-	-	-	-
AT. KENTUCKY	1/21/24	-	-	-	-	-	-	-	-	-	-	-	-	-	-	-
VS. TEXAS A&M	1/25/24	-	-	-	-	-	-	-	-	-	-	-	-	-	-	-
VS. ARKANSAS	1/28/24	-	-	-	-	-	-	-	-	-	-	-	-	-	-	-
AT TENNESSEE	2/4/24	-	-	-	-	-	-	-	-	-	-	-	-	-	-	-
AT SOUTH CAROLINA	2/8/24	-	-	-	-	-	-	-	-	-	-	-	-	-	-	-
VS. AUBURN	2/11/24	-	-	-	-	-	-	-	-	-	-	-	-	-	-	-
AT ARKANSAS	2/18/24	-	-	-	-	-	-	-	-	-	-	-	-	-	-	-
AT FLORIDA	2/22/24	-	-	-	-	-	-	-	-	-	-	-	-	-	-	-
VS. OLE MISS	2/26/24	-	-	-	-	-	-	-	-	-	-	-	-	-	-	-
VS. VANDERBILT	2/29/24	-	-	-	-	-	-	-	-	-	-	-	-	-	-	-
AT MISSISSIPPI STATE	3/3/24	-	-	-	-	-	-	-	-	-	-	-	-	-	-	-

CAREER STATS

SEASON	G-GS	MIN	MPG	FG-A	FG%	3FG-A	3FG%	FT-A	FT%	O	D	REB / AVG	PF	FO	AST / TO	BS / S	TP	AVG.
2019-20	14-0	73	5.2	7-20	.350	3-10	.300	7-8	.875	1	7	8 / 0.6	5	0	6 / 7	1 / 8	24	1.7
2021-22	27-12	568	21.0	88-236	.288	24-89	.270	58-70	.829	7	46	53 / 2.0	53	0	39 / 38	1 / 30	218	7.6
2022-23	14-0	238	17.0	30-83	.361	10-36	.278	13-18	.722	6	23	29 / 2.1	26	0	11 / 18	1 / 16	83	7.1
2023-24	-	-	-	-	-	-	-	-	-	-	-	-	-	-	-	-	-	-
<b>TOTALS</b>	<b>55-12</b>	<b>878</b>	<b>15.7</b>	<b>105-339</b>	<b>.310</b>	<b>37-135</b>	<b>.274</b>	<b>78-96</b>	<b>.813</b>	<b>14</b>	<b>76</b>	<b>90 / 1.6</b>	<b>84</b>	<b>0</b>	<b>56 / 63</b>	<b>3 / 54</b>	<b>325</b>	<b>5.5</b>



**MAMA DEMBELE**



GUARD • 5-6 • SENIOR • HEALTH SCIENCE • MANLLEU, SPAIN



**SEASON/CAREER HIGHS**

**POINTS**

SEASON: 20, AT ILLINOIS (12/17/23)  
 CAREER: 20, AT ILLINOIS (12/17/23)

**FIELD GOALS**

SEASON: 8 (2X), LAST AT ILLINOIS (12/17/23)  
 CAREER: 8 (2X), LAST AT ILLINOIS (12/17/23)

**FIELD GOAL ATTEMPTS**

SEASON: 15, AT ILLINOIS (12/17/23)  
 CAREER: 15, AT ILLINOIS (12/17/23)

**3-POINTERS**

SEASON: 2, VS. TENNESSEE TECH (11/24/23)  
 CAREER: 3, VS. ARKANSAS (1/9/22)

**3-POINT ATTEMPTS**

SEASON: 4, VS. SOUTHERN INDIANA (11/20/23)  
 CAREER: 4 (5X), LAST VS. SOUTHERN INDIANA (11/20/23)

**FREE THROWS**

SEASON: 5 (2X), LAST VS. KANSAS STATE (12/9/23)  
 CAREER: 9, AT FLORIDA (2/27/22)

**FREE THROW ATTEMPTS**

SEASON: 6 (3X), LAST AT LSU (1/4/24)  
 CAREER: 10, AT FLORIDA (2/27/22)

**ASSISTS**

SEASON: 14, VS. SLU (11/12/23)  
 CAREER: 14, VS. SLU (11/12/23)

**BLOCKS**

SEASON:  
 CAREER: 1 (3X), LAST VS. MURRAY STATE (11/11/21)

**REBOUNDS**

SEASON: 9, VS. GERGIA (1/18/24)  
 CAREER: 9, VS. GERGIA (1/18/24)

**STEALS**

SEASON: 10, VS. NORTH ALABAMA (11/14/23)  
 CAREER: 10, VS. NORTH ALABAMA (11/14/23)

**MINUTES**

SEASON: 41, AT VIRGINIA (11/30/23)  
 CAREER: 44, VS. SOUTH CAROLINA (12/30/21)

@mamadembele\_4

- 2023 ARTHUR ASHE JR. SPORTS SCHOLAR AWARD
- FLUENT IN FIVE LANGUAGES ENGLISH, SPANISH, FRENCH, CATALAN AND BAMBARA
- FINISHED TOP 15 IN SEC AND LED MIZZOU WITH 3.0 ASSISTS PER GAME LAST SEASON
- LED SPAIN TO A GOLD MEDAL AT THE 2022 U18 EUROPEAN CHAMPIONSHIPS
- 2020-21 ALL-SEC FRESHMAN TEAM
- HELPED LEAD SPAIN TO A BRONZE MEDAL FINISH AND EARNED ALL-STAR RECOGNITION AT THE 2018 U16 EUROPEAN CHAMPIONSHIPS
- RECORDED 10 STEALS VERSUS NORTH ALABAMA, MARKING THE MOST STEALS BY A TIGER IN A GAME, AND IS THE SECOND-MOST IN A GAME IN PROGRAM HISTORY.
- RECORDED SIX ASSISTS AGAINST KANSAS STATE TO MOVE INTO TO SEVENTH PLACE ALL-TIME IN PROGRAM HISTORY IN ASSISTS.

**GAME-BY-GAME STATS**

OPPONENT	DATE	ST.	MIN	PTS	REB	AST	STL	BLK	T/O	FG	FG%	3PT	3P%	FT	FT%	PF
VS. BELMONT	11/6/23	*	31	15	4	5	2	0	1	5-7	71.4	0-1	0.0	5-6	83.3	4
VS. INDIANA STATE	11/9/23	*	20	4	4	7	3	0	6	0-2	0.0	0-0	0.0	4-4	100.0	2
AT ST. LOUIS	11/12/23	*	33	13	8	14	3	0	6	6-14	42.9	0-3	0.0	1-2	50.0	5
VS. NORTH ALABAMA	11/14/23	*	24	12	4	4	10	0	3	5-11	45.5	1-3	33.3	1-2	50.0	4
VS. SOUTHERN INDIANA	11/20/23	*	22	10	2	9	2	0	2	4-8	50.0	2-4	50.0	0-0	0.0	1
TENNESSEE TECH	11/24/23	*	38	18	3	1	0	0	2	8-8	100.0	2-2	100.0	0-0	0.0	1
KENT STATE	11/25/23	*	39	6	4	4	2	0	3	2-7	28.6	0-0	0.0	2-2	100.0	3
AT VIRGINIA	11/30/23	*	41	6	6	7	3	1	2	2-10	20.0	0-0	0.0	2-2	100.0	4
VS. SEMO	12/2/23	*	20	0	6	3	3	0	1	0-2	0.0	0-0	0.0	0-0	0.0	2
VS. MISSOURI STATE	12/6/23	*	27	10	8	12	3	0	4	4-6	66.7	1-2	50.0	1-2	50.0	2
KANSAS STATE	12/9/23	*	34	11	4	6	2	0	2	3-7	42.9	0-0	0.0	5-6	83.3	0
AT ILLINOIS	12/17/23	*	35	20	3	4	2	0	3	8-15	53.3	0-3	0.0	4-4	100.0	4
VS. KANSAS CITY	12/21/23	*	21	4	6	5	7	0	3	2-10	20.0	0-3	0.0	0-0	0.0	1
AT LSU	1/4/24	*	37	15	6	9	5	0	3	6-12	50.0	0-1	0.0	3-6	50.0	3
VS. ALABAMA	1/7/24	*	34	10	3	10	3	0	3	4-8	50.0	0-0	0.0	2-3	66.7	2
VS. SOUTH CAROLINA	1/11/24	-	-	-	-	-	-	-	-	-	-	-	-	-	-	-
AT VANDERBILT	1/14/24	*	35	6	5	9	6	0	2	2-8	25.0	0-0	0.0	2-2	100.0	2
VS. GEORGIA	1/18/24	*	35	6	9	5	0	0	5	2-4	50.0	2-3	66.7	0-0	0.0	4
AT. KENTUCKY	1/21/24	-	-	-	-	-	-	-	-	-	-	-	-	-	-	-
VS. TEXAS A&M	1/25/24	-	-	-	-	-	-	-	-	-	-	-	-	-	-	-
VS. ARKANSAS	1/28/24	-	-	-	-	-	-	-	-	-	-	-	-	-	-	-
AT TENNESSEE	2/4/24	-	-	-	-	-	-	-	-	-	-	-	-	-	-	-
AT SOUTH CAROLINA	2/8/24	-	-	-	-	-	-	-	-	-	-	-	-	-	-	-
VS. AUBURN	2/11/24	-	-	-	-	-	-	-	-	-	-	-	-	-	-	-
AT ARKANSAS	2/18/24	-	-	-	-	-	-	-	-	-	-	-	-	-	-	-
AT FLORIDA	2/22/24	-	-	-	-	-	-	-	-	-	-	-	-	-	-	-
VS. OLE MISS	2/26/24	-	-	-	-	-	-	-	-	-	-	-	-	-	-	-
VS. VANDERBILT	2/29/24	-	-	-	-	-	-	-	-	-	-	-	-	-	-	-
AT MISSISSIPPI STATE	3/3/24	-	-	-	-	-	-	-	-	-	-	-	-	-	-	-

**CAREER STATS**

SEASON	G-GS	MIN	MPG	FG-A	FG%	3FG-A	3FG%	FT-A	FT%	O	D	REB / AVG	PF	FO	AST / TO	BS / S	TP	AVG.
2020-21	22-22	487	22.1	26-75	.347	5-25	.200	16-24	.667	6	32	38 / 1.7	46	1	61 / 45	2 / 35	73	3.3
2021-22	31-31	915	29.4	58-155	.374	17-53	.321	29-43	.674	13	58	71 / 2.3	71	1	112 / 79	1 / 44	162	5.2
2022-23	28-24	614	21.9	37-98	.378	5-24	.208	27-43	.628	11	63	74 / 2.6	54	0	84 / 50	0 / 28	108	3.9
2023-24	17-17	524	30.8	60-141	.426	7-24	.292	37-46	.804	10	74	84 / 4.9	46	1	119 / 52	1 / 58	164	9.6
<b>TOTALS</b>	<b>98-94</b>	<b>2540</b>	<b>25.9</b>	<b>181-469</b>	<b>.386</b>	<b>34-126</b>	<b>.270</b>	<b>109-156</b>	<b>.699</b>	<b>40</b>	<b>227</b>	<b>267 / 2.7</b>	<b>217</b>	<b>3</b>	<b>378 / 226</b>	<b>4 / 165</b>	<b>505</b>	<b>5.2</b>

**HILKE FELDRAPPE**



FORWARD • 6-3 • FRESHMAN • UNDECLARED • BERLIN, GERMANY



@hilke.feldrappe

- PLAYED THREE SEASONS OF PROFESSIONAL BASKETBALL FOR ALBA BERLIN
- REPRESENTED HER HOME COUNTRY OF GERMANY IN THE FIBA U19 WORLD CUP THIS SUMMER
- AVERAGED A DOUBLE-DOUBLE WITH 13.0 POINTS AND 11.0 REBOUNDS LAST SEASON FOR HER PROFESSIONAL TEAM

**SEASON/CAREER HIGHS**

**POINTS**

SEASON: 11, VS. KANSAS CITY (12/21/23)

CAREER: 11, VS. KANSAS CITY (12/21/23)

**FIELD GOALS**

SEASON: 5, VS. KANSAS CITY (12/21/23)

CAREER: 5, VS. KANSAS CITY (12/21/23)

**FIELD GOAL ATTEMPTS**

SEASON: 7 (2X), LAST VS. KANSAS CITY (12/21/23)

CAREER: 7 (2X), LAST VS. KANSAS CITY (12/21/23)

**3-POINTERS**

SEASON: 1 (3X), LAST VS. SOUTH CAROLINA (1/11/24)

CAREER: 1 (3X), LAST VS. SOUTH CAROLINA (1/11/24)

**3-POINT ATTEMPTS**

SEASON: 3, VS. SEMO (12/2/23)

CAREER: 3, VS. SEMO (12/2/23)

**FREE THROWS**

SEASON: 1 (2X), LAST VS. SOUTH CAROLINA (1/11/24)

CAREER: 1 (2X), LAST VS. SOUTH CAROLINA (1/11/24)

**FREE THROW ATTEMPTS**

SEASON: 2 (3X), LAST VS. SOUTH CAROLINA (1/11/24)

CAREER: 2 (3X), LAST VS. SOUTH CAROLINA (1/11/24)

**ASSISTS**

SEASON: 4, VS. SEMO (12/2/23)

CAREER: 4, VS. SEMO (12/2/23)

**BLOCKS**

SEASON: 1, VS. SEMO (12/2/23)

CAREER: 1, VS. SEMO (12/2/23)

**REBOUNDS**

SEASON: 5, VS. INDIANA STATE (11/9/23)

CAREER: 5, VS. INDIANA STATE (11/9/23)

**STEALS**

SEASON: 3, VS. SEMO (12/2/23)

CAREER: 3, VS. SEMO (12/2/23)

**MINUTES**

SEASON: 21, VS. SEMO (12/2/23)

CAREER: 21, VS. SEMO (12/2/23)

**GAME-BY-GAME STATS**

OPPONENT	DATE	ST.	MIN	PTS	REB	AST	STL	BLK	T/O	FG	FG%	3PT	3P%	FT	FT%	PF
VS. BELMONT	11/6/23	-	-	-	-	-	-	-	-	-	-	-	-	-	-	-
VS. INDIANA STATE	11/9/23	20	5	5	3	2	0	3	2-4	50.0	1-1	100.0	0-0	0.0	2	
AT ST. LOUIS	11/12/23	1	0	0	0	0	0	1	0-1	0.0	0-1	0.0	0-0	0.0	3	
VS. NORTH ALABAMA	11/14/23	5	0	0	0	0	0	0	0-0	0.0	0-0	0.0	0-0	0.0	1	
VS. SOUTHERN INDIANA	11/20/23	15	2	4	1	0	0	0	1-3	33.3	0-1	0.0	0-0	0.0	0	
TENNESSEE TECH	11/24/23	1	0	0	0	0	0	0	0-0	0.0	0-0	0.0	0-0	0.0	0	
KENT STATE	11/25/23	-	-	-	-	-	-	-	-	-	-	-	-	-	-	
AT VIRGINIA	11/30/23	-	-	-	-	-	-	-	-	-	-	-	-	-	-	
VS. SEMO	12/2/23	21	5	1	4	3	1	2	2-7	28.6	0-3	0.0	1-2	50.0	1	
VS. MISSOURI STATE	12/6/23	16	2	1	2	0	0	1	1-2	50.0	0-1	0.0	0-2	0.0	3	
KANSAS STATE	12/9/23	13	0	1	0	1	0	0	0-1	0.0	0-0	0.0	0-0	0.0	0	
AT ILLINOIS	12/17/23	4	0	0	0	0	0	0	0-1	0.0	0-1	0.0	0-0	0.0	0	
VS. KANSAS CITY	12/21/23	20	11	4	3	1	0	2	5-7	71.4	1-2	50.0	0-1	0.0	1	
AT LSU	1/4/24	14	2	1	0	0	1	1	1-3	33.3	0-2	0.0	0-0	0.0	2	
VS. ALABAMA	1/7/24	7	0	0	0	0	0	0	0-0	0.0	0-0	0.0	0-0	0.0	0	
VS. SOUTH CAROLINA	1/11/24	19	4	1	1	1	0	1	1-5	20.0	1-1	100.0	1-2	50.0	1	
AT VANDERBILT	1/14/24	7	0	0	0	0	0	0	0-1	0.0	0-1	0.0	0-0	0.0	0	
VS. GEORGIA	1/18/24	9	2	0	0	1	0	2	1-2	50.0	0-1	0.0	0-0	0.0	2	
AT KENTUCKY	1/21/24	-	-	-	-	-	-	-	-	-	-	-	-	-	-	
VS. TEXAS A&M	1/25/24	-	-	-	-	-	-	-	-	-	-	-	-	-	-	
VS. ARKANSAS	1/28/24	-	-	-	-	-	-	-	-	-	-	-	-	-	-	
AT TENNESSEE	2/4/24	-	-	-	-	-	-	-	-	-	-	-	-	-	-	
AT SOUTH CAROLINA	2/8/24	-	-	-	-	-	-	-	-	-	-	-	-	-	-	
VS. AUBURN	2/11/24	-	-	-	-	-	-	-	-	-	-	-	-	-	-	
AT ARKANSAS	2/18/24	-	-	-	-	-	-	-	-	-	-	-	-	-	-	
AT FLORIDA	2/22/24	-	-	-	-	-	-	-	-	-	-	-	-	-	-	
VS. OLE MISS	2/26/24	-	-	-	-	-	-	-	-	-	-	-	-	-	-	
VS. VANDERBILT	2/29/24	-	-	-	-	-	-	-	-	-	-	-	-	-	-	
AT MISSISSIPPI STATE	3/3/24	-	-	-	-	-	-	-	-	-	-	-	-	-	-	

**CAREER STATS**

SEASON	G-GS	MIN	MPG	FG-A	FG%	3FG-A	3FG%	FT-A	FT%	O	D	REB / AVG	PF	FO	AST / TO	BS / S	TP	AVG.
2023-24	15-0	175	11.7	14-37	.378	3-15	.200	2-7	.286	5	13	18 / 1.2	16	0	14 / 13	2 / 9	33	2.2
<b>TOTALS</b>	<b>15-0</b>	<b>175</b>	<b>11.7</b>	<b>14-37</b>	<b>.378</b>	<b>3-15</b>	<b>.200</b>	<b>2-7</b>	<b>.286</b>	<b>5</b>	<b>13</b>	<b>18 / 1.2</b>	<b>16</b>	<b>0</b>	<b>14 / 13</b>	<b>2 / 9</b>	<b>33</b>	<b>2.2</b>

**LUCIJA MILKOVIC**



CENTER • 6-6 • FRESHMAN • UNDECLARED • SIBENIK, CROATIA



@lucija\_\_milkovic

- PLAYED FOUR SEASONS OF PROFESSIONAL BASKETBALL FOR ZKK SIBENIK
- AVERAGED 6.4 POINTS AND 5.5 REBOUNDS IN 22 GAMES LAST SEASON
- REPRESENTED HER HOME COUNTRY CROATIA AT THE U18 FIBA EUROPEAN CHAMPIONSHIPS LAST SUMMER

**SEASON/CAREER HIGHS**

**POINTS**

SEASON: 3, VS. INDIANA STATE (11/9/23)

CAREER: 3, VS. INDIANA STATE (11/9/23)

**FIELD GOALS**

SEASON: 1 (3X), LAST VS. KANSAS CITY (12/21/23)

CAREER: 1 (3X), LAST VS. KANSAS CITY (12/21/23)

**FIELD GOAL ATTEMPTS**

SEASON: 2 (4X), LAST VS. KANSAS CITY (12/21/23)

CAREER: 2 (4X), LAST VS. KANSAS CITY (12/21/23)

**3-POINTERS**

SEASON: 1, VS. INDIANA STATE (11/9/23)

CAREER: 1, VS. INDIANA STATE (11/9/23)

**3-POINT ATTEMPTS**

SEASON: 2, VS. INDIANA STATE (11/9/23)

CAREER: 2, VS. INDIANA STATE (11/9/23)

**FREE THROWS**

SEASON:

CAREER:

**FREE THROW ATTEMPTS**

SEASON:

CAREER:

**ASSISTS**

SEASON: 2, VS. SEMO (12/2/23)

CAREER: 2, VS. SEMO (12/2/23)

**BLOCKS**

SEASON: 1, (2X) VS. SOUTHERN INDIANA (11/20/23)

CAREER: 1, (2X) VS. SOUTHERN INDIANA (11/20/23)

**REBOUNDS**

SEASON: 3, VS. MISSOURI STATE (12/6/23)

CAREER: 3, VS. MISSOURI STATE (12/6/23)

**STEALS**

SEASON: 1, VS. SOUTHERN INDIANA (11/20/23)

CAREER: 1, VS. SOUTHERN INDIANA (11/20/23)

**MINUTES**

SEASON: 6, VS. SEMO (12/2/23)

CAREER: 6, VS. SEMO (12/2/23)

**GAME-BY-GAME STATS**

OPPONENT	DATE	ST.	MIN	PTS	REB	AST	STL	BLK	T/O	FG	FG%	3PT	3P%	FT	FT%	PF
VS. BELMONT	11/6/23	-	-	-	-	-	-	-	-	-	-	-	-	-	-	-
VS. INDIANA STATE	11/9/23	5	3	0	0	0	1	0	1-2	50.0	1-2	50.0	0-0	0.0	0.0	2
AT ST. LOUIS	11/12/23	-	-	-	-	-	-	-	-	-	-	-	-	-	-	-
VS. NORTH ALABAMA	11/14/23	-	-	-	-	-	-	-	-	-	-	-	-	-	-	-
VS. SOUTHERN INDIANA	11/20/23	4	0	1	0	1	1	0	0-0	0.0	0-0	0.0	0-0	0.0	0.0	0
TENNESSEE TECH	11/24/23	-	-	-	-	-	-	-	-	-	-	-	-	-	-	-
KENT STATE	11/25/23	-	-	-	-	-	-	-	-	-	-	-	-	-	-	-
AT VIRGINIA	11/30/23	-	-	-	-	-	-	-	-	-	-	-	-	-	-	-
VS. SEMO	12/2/23	6	2	1	2	0	0	1	1-2	50.0	0-0	0.0	0-0	0.0	0.0	1
VS. MISSOURI STATE	12/6/23	3	0	3	0	0	0	2	0-2	0.0	0-0	0.0	0-0	0.0	0.0	1
KANSAS STATE	12/9/23	4	2	0	0	0	0	1	1-2	50.0	0-0	0.0	0-0	0.0	0.0	1
AT ILLINOIS	12/17/23	-	-	-	-	-	-	-	-	-	-	-	-	-	-	-
VS. KANSAS CITY	12/21/23	-	-	-	-	-	-	-	-	-	-	-	-	-	-	-
AT LSU	1/4/24	-	-	-	-	-	-	-	-	-	-	-	-	-	-	-
VS. ALABAMA	1/7/24	-	-	-	-	-	-	-	-	-	-	-	-	-	-	-
VS. SOUTH CAROLINA	1/11/24	-	-	-	-	-	-	-	-	-	-	-	-	-	-	-
AT VANDERBILT	1/14/24	-	-	-	-	-	-	-	-	-	-	-	-	-	-	-
VS. GEORGIA	1/18/24	-	-	-	-	-	-	-	-	-	-	-	-	-	-	-
AT. KENTUCKY	1/21/24	-	-	-	-	-	-	-	-	-	-	-	-	-	-	-
VS. TEXAS A&M	1/25/24	-	-	-	-	-	-	-	-	-	-	-	-	-	-	-
VS. ARKANSAS	1/28/24	-	-	-	-	-	-	-	-	-	-	-	-	-	-	-
AT TENNESSEE	2/4/24	-	-	-	-	-	-	-	-	-	-	-	-	-	-	-
AT SOUTH CAROLINA	2/8/24	-	-	-	-	-	-	-	-	-	-	-	-	-	-	-
VS. AUBURN	2/11/24	-	-	-	-	-	-	-	-	-	-	-	-	-	-	-
AT ARKANSAS	2/18/24	-	-	-	-	-	-	-	-	-	-	-	-	-	-	-
AT FLORIDA	2/22/24	-	-	-	-	-	-	-	-	-	-	-	-	-	-	-
VS. OLE MISS	2/26/24	-	-	-	-	-	-	-	-	-	-	-	-	-	-	-
VS. VANDERBILT	2/29/24	-	-	-	-	-	-	-	-	-	-	-	-	-	-	-
AT MISSISSIPPI STATE	3/3/24	-	-	-	-	-	-	-	-	-	-	-	-	-	-	-

**CAREER STATS**

SEASON	G-GS	MIN	MPG	FG-A	FG%	3FG-A	3FG%	FT-A	FT%	O	D	REB / AVG	PF	FO	AST / TO	BS / S	TP	AVG.
2023-24	6-0	22	3.7	3-8	.375	1-2	.500	0-0	.000	1	4	5 / 0.8	5	0	2 / 4	2 / 1	7	1.2
<b>TOTALS</b>	<b>6-0</b>	<b>22</b>	<b>3.7</b>	<b>3-8</b>	<b>.375</b>	<b>1-2</b>	<b>.500</b>	<b>0-0</b>	<b>.000</b>	<b>1</b>	<b>4</b>	<b>5 / 0.8</b>	<b>5</b>	<b>0</b>	<b>2 / 4</b>	<b>2 / 1</b>	<b>7</b>	<b>1.2</b>

**ABBY FEIT**



GUARD/FORWARD • 6-1 • GRADUATE • CLINICAL LAB. SCIENCE • NORMAL, ILL. /EVANSVILLE



@abby.feit

- TRANSFERRED TO MIZZOU IN THE OFFSEASON AFTER FOUR SEASONS AT EVANSVILLE
- SCORED OVER 1,500 POINTS WHILE WITH THE ACES
- RANKED SEVENTH IN THE MVC SCORING 15.5 POINTS PER GAME LAST SEASON
- FINISHED FIFTH IN THE CONFERENCE WITH 7.6 REBOUNDS PER CONTEST IN 2022-23
- 2022-23 ALL-MVC SECOND TEAM
- 2021-22 ALL-MVC FIRST TEAM
- TWO-TIME ALL-MVC HONORABLE MENTION
- 2019-20 MVC FRESHMAN OF THE YEAR
- FINISHED FOURTH IN MVC IN SCORING AVERAGE WITH 15.1 PPG IN 2021-22
- AMASSED 13 DOUBLE-DOUBLES IN 2021-22

**SEASON/CAREER HIGHS**

**POINTS**

SEASON: 13 (2X), LAST VS. KANSAS STATE (12/9/23)  
 CAREER: 29, AT EASTERN ILLINOIS (11/20/21)

**FIELD GOALS**

SEASON: 6, VS. MISSOURI STATE (12/6/23)  
 CAREER: 13, VS. BRESCIA (11/5/19)

**FIELD GOAL ATTEMPTS**

SEASON: 11, VS. KANSAS STATE (12/9/23)  
 CAREER: 24, AT EASTERN ILLINOIS (11/20/21)

**3-POINTERS**

SEASON: 3 (2X), LAST VS. KANSAS CITY (12/21/23)  
 CAREER: 6, VS. DRAKE (3/3/22)

**3-POINT ATTEMPTS**

SEASON: 6 (2X), LAST VS. KANSAS STATE (12/9/23)  
 CAREER: 11, AT ILLINOIS (12/15/19)

**FREE THROWS**

SEASON: 3, VS. KANSAS STATE (12/9/23)  
 CAREER: 10, VS. CHICAGO STATE (11/16/22)

**FREE THROW ATTEMPTS**

SEASON: 3 (2X), LAST VS. VANDERBILT (1/14/24)  
 CAREER: 13, VS. MURRAY STATE (12/3/19)

**ASSISTS**

SEASON: 3 (3X), LAST VS. SOUTH CAROLINA (1/11/24)  
 CAREER: 5 (3X) VS. BELLARMINA (12/7/2021)

**BLOCKS**

SEASON: 2, AT VANDERBILT (1/14/24)  
 CAREER: 4 (6X) LAST AT VALPO (1/5/23)

**REBOUNDS**

SEASON: 7, AT. LSU (1/4/24)  
 CAREER: 17, VS. CHICAGO STATE (11/16/22)

**STEALS**

SEASON: 2, AT. ILLINOIS (12/17/23)  
 CAREER: 6, VS. OAKLAND CITY (12/16/20)

**MINUTES**

SEASON: 29, VS. KANSAS STATE (12/9/23)  
 CAREER: 45 (2X), AT EASTERN ILLINOIS (11/20/21)

**GAME-BY-GAME STATS**

OPPONENT	DATE	ST.	MIN	PTS	REB	AST	STL	BLK	T/O	FG	FG%	3PT	3P%	FT	FT%	PF
VS. BELMONT	11/6/23		15	4	2	0	0	0	1	1-4	25.0	1-3	33.3	1-2	50.0	1
VS. INDIANA STATE	11/9/23		19	2	5	3	1	0	2	1-4	25.0	0-1	0.0	0-0	0.0	2
AT ST. LOUIS	11/12/23		21	6	2	3	1	0	1	2-6	33.3	2-6	33.3	0-0	0.0	2
VS. NORTH ALABAMA	11/14/23		18	2	2	1	1	0	1	1-1	100.0	0-0	0.0	0-0	0.0	1
VS. SOUTHERN INDIANA	11/20/23		18	3	3	0	0	0	0	1-2	50.0	1-2	50.0	0-0	0.0	0
TENNESSEE TECH	11/24/23		21	9	2	1	0	0	0	3-6	50.0	1-3	33.3	2-2	100.0	2
KENT STATE	11/25/23		27	5	6	2	0	0	0	2-7	28.6	1-4	25.0	0-0	0.0	1
AT VIRGINIA	11/30/23		7	0	3	0	0	0	0	0-2	0.0	0-2	0.0	0-0	0.0	1
VS. SEMO	12/2/23		22	11	5	0	1	0	0	5-7	71.4	1-2	50.0	0-0	0.0	1
VS. MISSOURI STATE	12/6/23		17	13	0	1	0	0	0	6-8	75.0	1-3	33.3	0-0	0.0	1
KANSAS STATE	12/9/23	*	29	13	8	1	0	1	0	4-11	36.4	2-6	33.3	3-3	100.0	1
AT ILLINOIS	12/17/23		26	9	2	1	2	0	5	3-5	60.0	3-4	75.0	0-0	0.0	3
VS. KANSAS CITY	12/21/23		18	12	5	1	0	0	0	4-6	66.7	3-4	75.0	1-1	100.0	1
AT LSU	1/4/24		27	11	7	1	1	0	2	4-10	40.0	2-6	33.3	1-1	100.0	2
VS. ALABAMA	1/7/24		23	6	5	1	2	1	0	2-6	33.3	1-4	25.0	1-2	50.0	2
VS. SOUTH CAROLINA	1/11/24		24	5	2	3	0	1	0	1-7	14.3	1-4	25.0	2-2	100.0	2
AT VANDERBILT	1/14/24		23	11	4	1	0	2	1	4-8	50.0	1-4	25.0	2-3	66.7	4
VS. GEORGIA	1/18/24		17	4	2	1	1	0	2	2-3	66.7	0-1	0.0	0-0	0.0	2
AT. KENTUCKY	1/21/24		-	-	-	-	-	-	-	-	-	-	-	-	-	-
VS. TEXAS A&M	1/25/24		-	-	-	-	-	-	-	-	-	-	-	-	-	-
VS. ARKANSAS	1/28/24		-	-	-	-	-	-	-	-	-	-	-	-	-	-
AT TENNESSEE	2/4/24		-	-	-	-	-	-	-	-	-	-	-	-	-	-
AT SOUTH CAROLINA	2/8/24		-	-	-	-	-	-	-	-	-	-	-	-	-	-
VS. AUBURN	2/11/24		-	-	-	-	-	-	-	-	-	-	-	-	-	-
AT ARKANSAS	2/18/24		-	-	-	-	-	-	-	-	-	-	-	-	-	-
AT FLORIDA	2/22/24		-	-	-	-	-	-	-	-	-	-	-	-	-	-
VS. OLE MISS	2/26/24		-	-	-	-	-	-	-	-	-	-	-	-	-	-
VS. VANDERBILT	2/29/24		-	-	-	-	-	-	-	-	-	-	-	-	-	-
AT MISSISSIPPI STATE	3/3/24		-	-	-	-	-	-	-	-	-	-	-	-	-	-

**CAREER STATS**

SEASON	G-GS	MIN	MPG	FG-A	FG%	3FG-A	3FG%	FT-A	FT%	O	D	REB / AVG	PF	FO	AST / TO	BS / S	TP	AVG.
2019-20	29-29	1060	36.6	149-339	.440	45-129	.349	54-80	.675	41	204	245 / 8.4	60	2	59 / 84	42 / 43	396	13.7
2020-21	23-23	800	34.8	119-284	.419	33-106	.311	72-97	.742	21	159	180 / 7.8	36	0	29 / 65	23 / 33	343	14.9
2021-22	29-29	1001	34.5	164-378	.434	50-152	.329	60-83	.723	58	201	259 / 8.9	66	2	40 / 64	38 / 52	438	15.1
2022-23	28-28	906	32.4	157-352	.446	54-159	.340	66-87	.759	35	179	214 / 7.6	56	1	36 / 77	28 / 33	434	15.5
2023-24	18-1	373	20.7	46-103	.447	21-59	.356	13-16	.813	16	49	65 / 3.6	29	0	21 / 15	5 / 10	126	7.0
<b>TOTALS</b>	<b>127-110</b>	<b>4154</b>	<b>32.6</b>	<b>635-1456</b>	<b>.436</b>	<b>203-605</b>	<b>.336</b>	<b>265-363</b>	<b>.730</b>	<b>171</b>	<b>792</b>	<b>963 / 7.6</b>	<b>247</b>	<b>5</b>	<b>185 / 305</b>	<b>136 / 171</b>	<b>1738</b>	<b>13.7</b>



**SARAH LINTHACUM**



FORWARD • 6-3 • JUNIOR • UNDECLARED • JEFFERSON CITY, MO.



**SEASON/CAREER HIGHS**

**POINTS**

SEASON: 4, VS. INDIANA STATE (11/9/23)  
 CAREER: 9, VS. BRADLEY (11/20/22)

**FIELD GOALS**

SEASON: 2, VS. INDIANA STATE (11/9/23)  
 CAREER: 4, VS. BRADLEY (11/10/22)

**FIELD GOAL ATTEMPTS**

SEASON: 2 (2X), LAST VS. SEMO (12/2/23)  
 CAREER: 7, VS. BRADLEY (11/10/22)

**3-POINTERS**

SEASON:  
 CAREER:

**3-POINT ATTEMPTS**

SEASON:  
 CAREER:

**FREE THROWS**

SEASON: 2 (4X), LAST VS. SEMO (12/2/23)  
 CAREER: 2 (5X), LAST VS. SEMO (12/2/23)

**FREE THROW ATTEMPTS**

SEASON: 2 (5X), LAST VS. SOUTH CAROLINA (1/11/24)  
 CAREER: 3, VS. BRADLEY (11/10/22)

**ASSISTS**

SEASON: 1 (2X) VS. SOUTHERN INDIANA (11/20/23)  
 CAREER: 2 (2X), LAST AT KENTUCKY (1/29/23)

**BLOCKS**

SEASON: 1, VS. KANSAS CITY (12/21/23)  
 CAREER: 2, AT ALABAMA (1/5/23)

**REBOUNDS**

SEASON: 5, VS. SOUTHERN INDIANA (11/20/23)  
 CAREER: 13, VS. UMASS (12/3/22)

**STEALS**

SEASON: 2, VS. INDIANA STATE (11/9/23)  
 CAREER: 2 VS. INDIANA STATE (11/9/23)

**MINUTES**

SEASON: 13 (2X), LAST VS. MISSOURI STATE (12/6/23)  
 CAREER: 29, VS. UMASS (12/3/22)

@sarahlinthacum

@sarahplinthacum

- 2022-23 WINTER SEC ACADEMIC HONOR ROLL
- 2022-23 SEC COMMUNITY SERVICE TEAM
- 2021-22 FIRST-YEAR SEC ACADEMIC HONOR ROLL
- MIDDLE OF THREE LINTHACUM SISTER ON THE ROSTER, JOINED BY MICAH AND HANNAH
- APPEARED IN A CAREER-HIGH 30 GAMES LAST SEASON
- SCORED A CAREER-BEST NINE POINTS IN A WIN OVER BRADLEY (NOV. 10, 2022)
- 2021 CLASS 6A ALL-STATE HONORS
- 2019-20 MBCA CLASS 5 ALL-STATE HONORS
- THREE-TIME ALL-DISTRICT

**GAME-BY-GAME STATS**

OPPONENT	DATE	ST.	MIN	PTS	REB	AST	STL	BLK	T/O	FG	FG%	3PT	3P%	FT	FT%	PF
VS. BELMONT	11/6/23		2	0	2	0	0	0	1	0-0	0.0	0-0	0.0	0-0	0.0	1
VS. INDIANA STATE	11/9/23		13	4	3	1	2	0	2	2-2	100.0	0-0	0.0	0-2	0.0	1
AT ST. LOUIS	11/12/23		-	-	-	-	-	-	-	-	-	-	-	-	-	-
VS. NORTH ALABAMA	11/14/23		-	-	-	-	-	-	-	-	-	-	-	-	-	-
VS. SOUTHERN INDIANA	11/20/23		8	2	5	1	0	0	1	0-0	0.0	0-0	0.0	2-2	100.0	0
TENNESSEE TECH	11/24/23		6	2	2	0	0	0	0	0-1	0.0	0-0	0.0	2-2	100.0	0
KENT STATE	11/25/23		-	-	-	-	-	-	-	-	-	-	-	-	-	-
AT VIRGINIA	11/30/23		3	0	0	0	0	0	1	0-0	0.0	0-0	0.0	0-0	0.0	0
VS. SEMO	12/2/23		8	2	3	0	0	0	0	1-2	50.0	0-0	0.0	0-2	0.0	1
VS. MISSOURI STATE	12/6/23		13	2	2	0	1	0	1	1-1	100.0	0-0	0.0	0-0	0.0	0
KANSAS STATE	12/9/23		1	0	0	0	0	0	1	0-0	0.0	0-0	0.0	0-0	0.0	1
AT ILLINOIS	12/17/23		-	-	-	-	-	-	-	-	-	-	-	-	-	-
VS. KANSAS CITY	12/21/23		9	0	1	0	0	1	1	0-0	0.0	0-0	0.0	0-0	0.0	0
AT LSU	1/4/24		4	0	0	0	0	0	0	0-0	0.0	0-0	0.0	0-0	0.0	1
VS. ALABAMA	1/7/24		7	1	3	0	0	0	1	0-0	0.0	0-0	0.0	1-2	50.0	0
VS. SOUTH CAROLINA	1/11/24		-	-	-	-	-	-	-	-	-	-	-	-	-	-
AT VANDERBILT	1/14/24		3	0	0	0	0	0	0	0-1	0.0	0-0	0.0	0-0	0.0	0
VS. GEORGIA	1/18/24		3	0	1	0	0	0	0	0-0	0.0	0-0	0.0	0-0	0.0	0
AT. KENTUCKY	1/21/24		-	-	-	-	-	-	-	-	-	-	-	-	-	-
VS. TEXAS A&M	1/25/24		-	-	-	-	-	-	-	-	-	-	-	-	-	-
VS. ARKANSAS	1/28/24		-	-	-	-	-	-	-	-	-	-	-	-	-	-
AT TENNESSEE	2/4/24		-	-	-	-	-	-	-	-	-	-	-	-	-	-
AT SOUTH CAROLINA	2/8/24		-	-	-	-	-	-	-	-	-	-	-	-	-	-
VS. AUBURN	2/11/24		-	-	-	-	-	-	-	-	-	-	-	-	-	-
AT ARKANSAS	2/18/24		-	-	-	-	-	-	-	-	-	-	-	-	-	-
AT FLORIDA	2/22/24		-	-	-	-	-	-	-	-	-	-	-	-	-	-
VS. OLE MISS	2/26/24		-	-	-	-	-	-	-	-	-	-	-	-	-	-
VS. VANDERBILT	2/29/24		-	-	-	-	-	-	-	-	-	-	-	-	-	-
AT MISSISSIPPI STATE	3/3/24		-	-	-	-	-	-	-	-	-	-	-	-	-	-

**CAREER STATS**

SEASON	G-GS	MIN	MPG	FG-A	FG%	3FG-A	3FG%	FT-A	FT%	O	D	REB / AVG	PF	FO	AST / TO	BS / S	TP	AVG.
2021-22	15-0	79	5.6	5-8	.625	0-0	.000	1-3	.333	4	10	14 / 1.0	9	0	0 / 5	0 / 1	11	0.8
2022-23	30-6	276	9.2	21-38	.553	0-0	.000	7-15	.467	17	43	60 / 2.0	28	0	12 / 23	5 / 6	49	1.6
2023-24	14-0	85	6.1	4-8	.500	0-0	.000	5-10	.500	5	18	23 / 1.6	5	0	2 / 10	1 / 3	13	0.9
<b>TOTALS</b>	<b>59-6</b>	<b>440</b>	<b>7.5</b>	<b>30-54</b>	<b>.556</b>	<b>0-0</b>	<b>.000</b>	<b>13-28</b>	<b>.464</b>	<b>26</b>	<b>71</b>	<b>97 / 1.6</b>	<b>42</b>	<b>0</b>	<b>14 / 38</b>	<b>6 / 10</b>	<b>73</b>	<b>1.2</b>

**AVERI KROENKE**



GUARD • 5-11 • SOPHOMORE • SPEECH PATHOLOGY • COLUMBIA, MO.



**SEASON/CAREER HIGHS**

**POINTS**

SEASON:  
CAREER: 7 (2x), LAST VS. TENNESSEE (1/22/23)

**FIELD GOALS**

SEASON:  
CAREER: 3 (2x), LAST VS. TENNESSEE (1/22/23)

**FIELD GOAL ATTEMPTS**

SEASON:  
CAREER: 6, VS. OMAHA (12/9/22)

**3-POINTERS**

SEASON:  
CAREER:

**3-POINT ATTEMPTS**

SEASON:  
CAREER: 1 (3x), LAST VS. MISSISSIPPI ST. (2/16/23)

**FREE THROWS**

SEASON:  
CAREER: 2 (2x) LAST VS. VIRGINIA TECH (11/23/22)

**FREE THROW ATTEMPTS**

SEASON:  
CAREER: 4, VS. MISSOURI STATE (11/7/22)

**ASSISTS**

SEASON:  
CAREER: 3, VS. OMAHA (12/9/22)

**BLOCKS**

SEASON:  
CAREER: 2 (2x), LAST AT ARKANSAS (2/13/23)

**REBOUNDS**

SEASON:  
CAREER: 8, VS. OMAHA (12/9/22)

**STEALS**

SEASON:  
CAREER: 5, VS. TENNESSEE (1/22/23)

**MINUTES**

SEASON:  
CAREER: 33, VS. TENNESSEE (1/22/23)

@akswish1

@averı\_kroenke

- APPEARED IN 29 GAMES DURING FRESHMAN SEASON
- SCORED A CAREER-HIGH SEVEN POINTS ON TWO OCCASIONS AGAINST OMAHA AND TENNESSEE LAST YEAR
- NO. 74 OVERALL PLAYER IN CLASS OF 2022 BY ESPNW HOOPGURLZ
- NO. 2 RECRUIT IN CLASS OF 2022 IN STATE OF MISSOURI ACCORDING TO ESPNW
- THREE-TIME MISSOURI ALL-STATE HONOREE (2021-22, 2020-21, 2019-20)
- TWO-TIME CMAC CONFERENCE PLAYER OF THE YEAR
- THIRD COUSIN OF LOS ANGELES RAMS OWNER STAN KROENKE

**GAME-BY-GAME STATS**

OPPONENT	DATE	ST.	MIN	PTS	REB	AST	STL	BLK	T/O	FG	FG%	3PT	3P%	FT	FT%	PF
VS. BELMONT	11/6/23	-	-	-	-	-	-	-	-	-	-	-	-	-	-	-
VS. INDIANA STATE	11/9/23	-	-	-	-	-	-	-	-	-	-	-	-	-	-	-
AT ST. LOUIS	11/12/23	-	-	-	-	-	-	-	-	-	-	-	-	-	-	-
VS. NORTH ALABAMA	11/14/23	-	-	-	-	-	-	-	-	-	-	-	-	-	-	-
VS. SOUTHERN INDIANA	11/20/23	-	-	-	-	-	-	-	-	-	-	-	-	-	-	-
TENNESSEE TECH	11/24/23	-	-	-	-	-	-	-	-	-	-	-	-	-	-	-
KENT STATE	11/25/23	-	-	-	-	-	-	-	-	-	-	-	-	-	-	-
AT VIRGINIA	11/30/23	-	-	-	-	-	-	-	-	-	-	-	-	-	-	-
VS. SEMO	12/2/23	-	-	-	-	-	-	-	-	-	-	-	-	-	-	-
VS. MISSOURI STATE	12/6/23	-	-	-	-	-	-	-	-	-	-	-	-	-	-	-
KANSAS STATE	12/9/23	-	-	-	-	-	-	-	-	-	-	-	-	-	-	-
AT ILLINOIS	12/17/23	-	-	-	-	-	-	-	-	-	-	-	-	-	-	-
VS. KANSAS CITY	12/21/23	-	-	-	-	-	-	-	-	-	-	-	-	-	-	-
AT LSU	1/4/24	-	-	-	-	-	-	-	-	-	-	-	-	-	-	-
VS. ALABAMA	1/7/24	-	-	-	-	-	-	-	-	-	-	-	-	-	-	-
VS. SOUTH CAROLINA	1/11/24	-	-	-	-	-	-	-	-	-	-	-	-	-	-	-
AT VANDERBILT	1/14/24	-	-	-	-	-	-	-	-	-	-	-	-	-	-	-
VS. GEORGIA	1/18/24	-	-	-	-	-	-	-	-	-	-	-	-	-	-	-
AT. KENTUCKY	1/21/24	-	-	-	-	-	-	-	-	-	-	-	-	-	-	-
VS. TEXAS A&M	1/25/24	-	-	-	-	-	-	-	-	-	-	-	-	-	-	-
VS. ARKANSAS	1/28/24	-	-	-	-	-	-	-	-	-	-	-	-	-	-	-
AT TENNESSEE	2/4/24	-	-	-	-	-	-	-	-	-	-	-	-	-	-	-
AT SOUTH CAROLINA	2/8/24	-	-	-	-	-	-	-	-	-	-	-	-	-	-	-
VS. AUBURN	2/11/24	-	-	-	-	-	-	-	-	-	-	-	-	-	-	-
AT ARKANSAS	2/18/24	-	-	-	-	-	-	-	-	-	-	-	-	-	-	-
AT FLORIDA	2/22/24	-	-	-	-	-	-	-	-	-	-	-	-	-	-	-
VS. OLE MISS	2/26/24	-	-	-	-	-	-	-	-	-	-	-	-	-	-	-
VS. VANDERBILT	2/29/24	-	-	-	-	-	-	-	-	-	-	-	-	-	-	-
AT MISSISSIPPI STATE	3/3/24	-	-	-	-	-	-	-	-	-	-	-	-	-	-	-

**CAREER STATS**

SEASON	G-GS	MIN	MPG	FG-A	FG%	3FG-A	3FG%	FT-A	FT%	O	D	REB / AVG	PF	FO	AST / TO	BS / S	TP	AVG.
2022-23	29-0	286	9.9	17-48	.354	0-3	.000	7-13	.538	14	26	40 / 1.4	30	0	17 / 22	9 / 16	41	1.4
2023-24	-	-	-	-	-	-	-	-	-	-	-	-	-	-	-	-	-	-
<b>TOTAL</b>	<b>29-0</b>	<b>286</b>	<b>9.9</b>	<b>17-48</b>	<b>.354</b>	<b>0-3</b>	<b>.000</b>	<b>7-13</b>	<b>.538</b>	<b>14</b>	<b>26</b>	<b>40 / 1.4</b>	<b>30</b>	<b>0</b>	<b>17 / 22</b>	<b>9 / 16</b>	<b>41</b>	<b>1.4</b>

**ABBEY SCHREACKE**



GUARD • 6-0 • FRESHMAN • HEALTH SCIENCE / EDUCATION • QUINCY, ILL.



**SEASON/CAREER HIGHS**

**POINTS**

SEASON: 17, VS. INDIANA STATE (11/9/23)  
 CAREER: 17, VS. INDIANA STATE (11/9/23)

**FIELD GOALS**

SEASON: 6 (2x), LAST VS. SEMO (12/2/23)  
 CAREER: 6 (2x), LAST VS. SEMO (12/2/23)

**FIELD GOAL ATTEMPTS**

SEASON: 11, VS. SEMO (12/2/23)  
 CAREER: 11, VS. SEMO (12/2/23)

**3-POINTERS**

SEASON: 4 (2x), LAST VS. SEMO (12/2/23)  
 CAREER: 4 (2x), LAST VS. SEMO (12/2/23)

**3-POINT ATTEMPTS**

SEASON: 9, VS. SEMO (12/2/23)  
 CAREER: 9, VS. SEMO (12/2/23)

**FREE THROW**

SEASON: 4, VS. KANSAS CITY (12/21/23)  
 CAREER: 4, VS. KANSAS CITY (12/21/23)

**FREE THROW ATTEMPTS**

SEASON: 4 (2x), LAST VS. KANSAS CITY (12/21/23)  
 CAREER: 4 (2x), LAST VS. KANSAS CITY (12/21/23)

**ASSISTS**

SEASON: 4 (2x), LAST VS. N. ALABAMA (11/14/23)  
 CAREER: 4 (2x), LAST VS. N. ALABAMA (11/14/23)

**BLOCKS**

SEASON: 1 (4x), LAST VS. ALABAMA (1/7/24)  
 CAREER: 1 (4x), LAST VS. ALABAMA (1/7/24)

**REBOUNDS**

SEASON: 6 (3x), LAST VS. UMKC (12/21/23)  
 CAREER: 6 (3x), LAST VS. UMKC (12/21/23)

**STEALS**

SEASON: 2 (2x) LAST VS. GEORGIA (1/18/24)  
 CAREER: 2 (2x) LAST VS. GEORGIA (1/18/24)

**MINUTES**

SEASON: 36, VS. SOUTH CAROLINA (1/11/23)  
 CAREER: 36, VS. SOUTH CAROLINA (1/11/23)

@abbeyeschrecke

@abbeyeschrecke

- FINISHED CAREER AS ALL-TIME LEADING SCORER IN QUINCY NOTRE DAME HISTORY PASSING MIZZOU ALUM JORDAN FRERICKS
- AVERAGED 26.2 POINTS, 8.7 REBOUNDS, AND 3.2 ASSISTS PER GAME TO LEAD THE RAIDERS TO A 30-3 RECORD AND A CLASS 2A STATE CHAMPIONSHIP AS A JUNIOR IN 2021-22
- THREE-TIME ALL-STATE PERFORMER
- 2023 IHSA PLAYER OF THE YEAR
- MOTHER PLAYED VOLLEYBALL AND RAN TRACK AT MONMOUTH

**GAME-BY-GAME STATS**

OPPONENT	DATE	ST.	MIN	PTS	REB	AST	STL	BLK	T/O	FG	FG%	3PT	3P%	FT	FT%	PF
VS. BELMONT	11/6/23		25	7	3	0	1	1	1	2-6	33.3	1-4	25.0	2-2	100.0	1
VS. INDIANA STATE	11/9/23		24	17	4	4	1	0	4	6-8	75.0	4-5	80.0	1-1	100.0	2
AT ST. LOUIS	11/12/23		20	10	3	1	1	0	2	4-6	66.7	2-4	50.0	0-0	0.0	1
VS. NORTH ALABAMA	11/14/23		30	8	5	4	0	1	5	3-5	60.0	2-3	66.7	0-2	0.0	3
VS. SOUTHERN INDIANA	11/20/23		24	11	1	3	1	0	2	4-6	66.7	3-5	60.0	0-2	0.0	2
TENNESSEE TECH	11/24/23		19	0	6	0	0	1	3	0-2	0.0	0-1	0.0	0-0	0.0	0
KENT STATE	11/25/23		14	0	1	0	0	0	0	0-1	0.0	0-1	0.0	0-0	0.0	1
AT VIRGINIA	11/30/23		33	15	6	1	1	0	1	5-6	83.3	3-4	75.0	2-3	66.7	1
VS. SEMO	12/2/23		30	16	4	2	0	0	0	6-11	54.5	4-9	44.4	0-0	0.0	1
VS. MISSOURI STATE	12/6/23		25	9	1	2	1	0	0	3-6	50.0	1-3	33.3	2-4	50.0	0
KANSAS STATE	12/9/23		26	6	2	2	1	0	2	2-8	25.0	1-5	20.0	1-2	50.0	0
AT ILLINOIS	12/17/23		29	8	3	1	1	0	1	3-4	75.0	2-3	66.7	0-2	0.0	1
VS. KANSAS CITY	12/21/23		25	9	6	4	0	0	3	2-4	50.0	1-3	33.3	4-4	100.0	1
AT LSU	1/4/24		19	8	4	0	0	0	1	3-7	42.9	1-4	25.0	1-2	50.0	2
VS. ALABAMA	1/7/24		31	10	3	1	2	1	3	4-10	40.0	2-7	28.6	0-0	0.0	0
VS. SOUTH CAROLINA	1/11/24 *		36	3	6	2	1	0	1	1-7	14.3	1-5	20.0	0-0	0.0	1
AT VANDERBILT	1/14/24		11	0	0	2	0	0	1	0-2	0.0	0-2	0.0	0-0	0.0	1
VS. GEORGIA	1/18/24		21	5	1	1	2	0	2	2-5	40.0	1-2	50.0	0-0	0.0	1
AT KENTUCKY	1/21/24		-	-	-	-	-	-	-	-	-	-	-	-	-	-
VS. TEXAS A&M	1/25/24		-	-	-	-	-	-	-	-	-	-	-	-	-	-
VS. ARKANSAS	1/28/24		-	-	-	-	-	-	-	-	-	-	-	-	-	-
AT TENNESSEE	2/4/24		-	-	-	-	-	-	-	-	-	-	-	-	-	-
AT SOUTH CAROLINA	2/8/24		-	-	-	-	-	-	-	-	-	-	-	-	-	-
VS. AUBURN	2/11/24		-	-	-	-	-	-	-	-	-	-	-	-	-	-
AT ARKANSAS	2/18/24		-	-	-	-	-	-	-	-	-	-	-	-	-	-
AT FLORIDA	2/22/24		-	-	-	-	-	-	-	-	-	-	-	-	-	-
VS. OLE MISS	2/26/24		-	-	-	-	-	-	-	-	-	-	-	-	-	-
VS. VANDERBILT	2/29/24		-	-	-	-	-	-	-	-	-	-	-	-	-	-
AT MISSISSIPPI STATE	3/3/24		-	-	-	-	-	-	-	-	-	-	-	-	-	-

**CAREER STATS**

SEASON	G-GS	MIN	MPG	FG-A	FG%	3FG-A	3FG%	FT-A	FT%	O	D	REB / AVG	PF	FO	AST / TO	BS / S	TP	AVG.
2023-24	18-1	443	24.6	50-104	.481	29-70	.414	13-24	.542	8	52	60 / 3.3	19	0	30 / 33	4 / 13	142	7.9
<b>TOTAL</b>	<b>18-1</b>	<b>443</b>	<b>24.6</b>	<b>50-104</b>	<b>.481</b>	<b>29-70</b>	<b>.414</b>	<b>13-24</b>	<b>.542</b>	<b>8</b>	<b>52</b>	<b>60 / 3.3</b>	<b>19</b>	<b>0</b>	<b>30 / 33</b>	<b>4 / 13</b>	<b>142</b>	<b>7.9</b>

**ASHTON JUDD**



GUARD • 6-1 • SOPHOMORE • UNDECLARED • WEST PLAINS, MO..



**SEASON/CAREER HIGHS**

**POINTS**

SEASON: 31, VS. INDIANA STATE (11/9/23)  
 CAREER: 31, VS. INDIANA STATE (11/9/23)

**FIELD GOALS**

SEASON: 11, VS. INDIANA STATE (11/9/23)  
 CAREER: 11, VS. INDIANA STATE (11/9/23)

**FIELD GOAL ATTEMPTS**

SEASON: 20, VS. MISSOURI STATE (12/6/23)  
 CAREER: 20, VS. MISSOURI STATE (12/6/23)

**3-POINTERS**

SEASON: 7, VS. INDIANA STATE (11/9/23)  
 CAREER: 7, VS. INDIANA STATE (11/9/23)

**3-POINT ATTEMPTS**

SEASON: 9, VS. INDIANA STATE (11/9/23)  
 CAREER: 9, VS. INDIANA STATE (11/9/23)

**FREE THROWS**

SEASON: 6, VS. SOUTHERN INDIANA (11/20/23)  
 CAREER: 6, VS. SOUTHERN INDIANA (11/20/23)

**FREE THROW ATTEMPTS**

SEASON: 7, VS. SOUTHERN INDIANA (11/20/23)  
 CAREER: 7, VS. SOUTHERN INDIANA (11/20/23)

**ASSISTS**

SEASON: 4 (2x), VS. LAST S. CAROLINA (1/11/23)  
 CAREER: 4 (2x), VS. SOUTH CAROLINA (1/11/23)

**BLOCKS**

SEASON: 1 (6x), LAST VS. UMKC (12/21/23)  
 CAREER: 2 (2x), LAST VS. VANDERBILT (2/2/23)

**REBOUNDS**

SEASON: 13, VS. KANSAS CITY (12/21/23)  
 CAREER: 13, VS. KANSAS CITY (12/21/23)

**STEALS**

SEASON: 2, VS. TENNESSEE TECH (11/24/23)  
 CAREER: 4 (2x), LAST AT ARKANSAS (2/12/23)

**MINUTES**

SEASON: 42, AT VIRGINIA (11/30/23)  
 CAREER: 42, AT VIRGINIA (11/30/23)

@ashton\_judd @juddaashton

- 2022-23 ALL-SEC FRESHMAN TEAM
- SCORED IN DOUBLE FIGURES IN FIVE GAMES TO BEGIN 2023-24 SEASON
- AVERAGED 7.4 POINTS AND 3.0 REBOUNDS PER GAME DURING FRESHMAN CAMPAIGN
- RANKED THIRD IN THE SEC AND SET A MISSOURI FRESHMAN RECORD WITH A 44.9% 3-POINT PERCENTAGE
- FINISHED THIRD ON THE TEAM WITH 88 FIELD GOALS LAST SEASON
- NAMED SEC FRESHMAN OF THE WEEK ON FEB. 21, 2023
- 2021-22 MISSOURI CLASS 5 PLAYER OF THE YEAR
- LED WEST PLAINS TO THE 2021-22 MISSOURI CLASS 5 STATE TITLE
- SET PROGRAM RECORDS FOR MOST SINGLE-GAME POINTS (45), REBOUNDS, (23), ASSISTS (12), WITH WEST PLAINS

**GAME-BY-GAME STATS**

OPPONENT	DATE	ST.	MIN	PTS	REB	AST	STL	BLK	T/O	FG	FG%	3PT	3P%	FT	FT%	PF
VS. BELMONT	11/6/23	*	32	10	10	1	1	0	3	4-11	36.4	0-4	0.0	2-3	66.7	5
VS. INDIANA STATE	11/9/23	*	24	31	2	2	1	0	3	11-14	78.6	7-9	77.8	2-2	100.0	1
AT ST. LOUIS	11/12/23	*	35	21	6	0	1	1	2	9-16	56.3	3-6	50.0	0-0	0.0	5
VS. NORTH ALABAMA	11/14/23	*	29	10	12	4	0	1	8	4-15	26.7	0-4	0.0	2-2	100.0	4
VS. SOUTHERN INDIANA	11/20/23	*	28	26	5	3	1	0	5	8-16	50.0	4-8	50.0	6-7	85.7	0
TENNESSEE TECH	11/24/23	*	25	5	1	0	2	1	1	2-7	28.6	0-4	0.0	1-2	50.0	5
KENT STATE	11/25/23	*	35	13	5	2	1	0	2	5-10	50.0	1-3	33.3	2-2	100.0	3
AT VIRGINIA	11/30/23	*	42	14	6	2	1	1	3	5-12	41.7	1-5	20.0	3-6	50.0	4
VS. SEMO	12/2/23	*	21	12	6	0	0	0	3	4-10	40.0	2-5	40.0	2-3	66.7	1
VS. MISSOURI STATE	12/6/23	*	27	20	10	0	0	0	3	8-20	40.0	4-8	50.0	0-0	0.0	0
KANSAS STATE	12/9/23	*	30	6	3	0	1	0	2	2-14	14.3	0-4	0.0	2-2	100.0	1
AT ILLINOIS	12/17/23	*	24	7	8	3	1	1	0	3-11	27.3	1-6	16.7	0-0	0.0	4
VS. KANSAS CITY	12/21/23	*	24	12	13	2	0	1	1	5-15	33.3	1-5	20.0	1-2	50.0	1
AT LSU	1/4/24	*	22	5	2	1	0	0	7	2-5	40.0	1-3	33.3	0-0	0.0	4
VS. ALABAMA	1/7/24	*	26	12	7	1	0	0	2	4-7	57.1	0-2	0.0	4-4	100.0	3
VS. SOUTH CAROLINA	1/11/24	*	34	16	7	4	0	0	6	6-13	46.2	1-4	25.0	3-3	100.0	3
AT VANDERBILT	1/14/24	*	39	19	7	0	1	0	4	8-13	61.5	1-4	25.0	2-2	100.0	2
VS. GEORGIA	1/18/24	*	30	6	3	3	0	0	3	2-8	25.0	1-3	33.3	1-2	50.0	1
AT KENTUCKY	1/21/24	-	-	-	-	-	-	-	-	-	-	-	-	-	-	-
VS. TEXAS A&M	1/25/24	-	-	-	-	-	-	-	-	-	-	-	-	-	-	-
VS. ARKANSAS	1/28/24	-	-	-	-	-	-	-	-	-	-	-	-	-	-	-
AT TENNESSEE	2/4/24	-	-	-	-	-	-	-	-	-	-	-	-	-	-	-
AT SOUTH CAROLINA	2/8/24	-	-	-	-	-	-	-	-	-	-	-	-	-	-	-
VS. AUBURN	2/11/24	-	-	-	-	-	-	-	-	-	-	-	-	-	-	-
AT ARKANSAS	2/18/24	-	-	-	-	-	-	-	-	-	-	-	-	-	-	-
AT FLORIDA	2/22/24	-	-	-	-	-	-	-	-	-	-	-	-	-	-	-
VS. OLE MISS	2/26/24	-	-	-	-	-	-	-	-	-	-	-	-	-	-	-
VS. VANDERBILT	2/29/24	-	-	-	-	-	-	-	-	-	-	-	-	-	-	-
AT MISSISSIPPI STATE	3/3/24	-	-	-	-	-	-	-	-	-	-	-	-	-	-	-

**CAREER STATS**

SEASON	G-GS	MIN	MPG	FG-A	FG%	3FG-A	3FG%	FT-A	FT%	O	D	REB / AVG	PF	FO	AST / TO	BS / S	TP	AVG.
2022-23	32-0	644	20.1	88-191	.461	31-69	.449	31-39	.795	25	71	96 / 3.0	66	1	19 / 67	7 / 18	238	7.4
2023-24	18-18	526	29.2	91-216	.421	28-87	.322	33-42	.786	32	81	113 / 6.3	47	3	28 / 58	6 / 11	243	13.
<b>TOTAL</b>	<b>50-18</b>	<b>1170</b>	<b>23.4</b>	<b>179-407</b>	<b>.440</b>	<b>59-156</b>	<b>.378</b>	<b>64-81</b>	<b>.790</b>	<b>57</b>	<b>152</b>	<b>209 / 4.2</b>	<b>113</b>	<b>4</b>	<b>47 / 125</b>	<b>13 / 29</b>	<b>481</b>	<b>9.6</b>



ANGELIQUE NGALAKULONDI



FORWARD • 6-2 • GRADUATE • SOCIOLOGY • MANCHESTER, N.H., UMASS

@angeliquexox



SEASON/CAREER HIGHS

POINTS

SEASON: 9 (2x), LAST VS. S. INDIANA (11/20/23)  
 CAREER: 21, AT ARIZONA STATE (12/2/22)

FIELD GOALS

SEASON: 4 (3x), LAST VS. S. INDIANA (11/20/23)  
 CAREER: 10, AT ARIZONA STATE (12/2/22)

FIELD GOAL ATTEMPTS

SEASON: 7 (4x), LAST AT VIRGINIA (11/30/23)  
 CAREER: 14, VS. MAINE (11/14/22)

3-POINTERS

SEASON:  
 CAREER:

3-POINT ATTEMPTS

SEASON: 1, VS. NORTH ALABAMA (11/14/23)  
 CAREER: 1, VS. NORTH ALABAMA (11/14/23)

FREE THROWS

SEASON: 2 (3x), LAST VIRGINIA (11/30/23)  
 CAREER: 6, AT RICHMOND (1/15/22)

FREE THROW ATTEMPTS

SEASON: 6, AT VIRGINIA (11/30/23)  
 CAREER: 8, AT RICHMOND (1/15/22)

ASSISTS

SEASON: 2, VS. INDIANA STATE (11/9/23)  
 CAREER: 4, AT GEORGE WASHINGTON (1/22/22)

BLOCKS

SEASON: 1 (4x), LAST VS. TEN. TECH (11/25/23)  
 CAREER: 4 (2x), AT FIU (11/27/22)

REBOUNDS

SEASON: 8, VS. SOUTHERN INDIANA (11/20/23)  
 CAREER: 15, VS. ALBANY (3/17/23)

STEALS

SEASON: 2, VS. NORTH ALABAMA (11/14/23)  
 CAREER: 2 (8x), LAST VS. N. ALABAMA (11/14/23)

MINUTES

SEASON: 17, AT VIRGINIA (11/30/23)  
 CAREER: 35, AT RICHMOND (1/15/22)

- TRANSFERED TO MIZZOU IN THE OFFSEASON FOLLOWING FOUR SEASONS AT UMASS
- RANKED FIRST IN THE ATLANTIC 10 IN FIELD GOAL PERCENTAGE (.566) LAST SEASON
- APPEARED IN 33 GAMES, STARTING IN 30 FOR THE MINUTEWOMEN IN 2022-23, AVERAGING 18.8 MINUTES PER GAME
- SCORED A CAREER-HIGH 21 POINTS, SEVEN REBOUNDS AND FOUR BLOCKS ON 76.9% SHOOTING IN 19 MINUTES AGAINST ARIZONA STATE (DEC. 2, 2022)
- 2018 NEW HAMPSHIRE GATORADE OF PLAYER OF THE YEAR
- RANKED NO. 278 NATIONALLY IN CLASS OF 2019
- MOVED TO THE UNITED STATES FROM THE CONGO DURING HER CHILDHOOD

GAME-BY-GAME STATS

OPPONENT	DATE	ST.	MIN	PTS	REB	AST	STL	BLK	T/O	FG	FG%	3PT	3P%	FT	FT%	PF
VS. BELMONT	11/6/23	*	12	4	3	0	1	0	1	1-4	25.0	0-0	0.0	2-2	100.0	4
VS. INDIANA STATE	11/9/23	*	14	8	5	2	1	1	1	4-7	57.1	0-0	0.0	0-0	0.0	1
AT ST. LOUIS	11/12/23	*	11	2	5	0	0	0	2	1-2	50.0	0-0	0.0	0-0	0.0	5
VS. NORTH ALABAMA	11/14/23	*	13	9	7	1	2	1	0	4-7	57.1	0-1	0.0	1-2	50.0	0
VS. SOUTHERN INDIANA	11/20/23	*	16	9	8	0	1	1	0	4-7	57.1	0-0	0.0	1-1	100.0	2
TENNESSEE TECH	11/24/23	*	11	2	2	1	0	0	1	0-0	0.0	0-0	0.0	2-2	100.0	5
KENT STATE	11/25/23	*	7	0	1	1	0	1	0	0-1	0.0	0-0	0.0	0-0	0.0	0
AT VIRGINIA	11/30/23	*	17	8	5	1	1	0	2	3-7	42.9	0-0	0.0	2-6	33.3	3
VS. SEMO	12/2/23	-	-	-	-	-	-	-	-	-	-	-	-	-	-	-
VS. MISSOURI STATE	12/6/23	-	-	-	-	-	-	-	-	-	-	-	-	-	-	-
KANSAS STATE	12/9/23	-	-	-	-	-	-	-	-	-	-	-	-	-	-	-
AT ILLINOIS	12/17/23	-	-	-	-	-	-	-	-	-	-	-	-	-	-	-
VS. KANSAS CITY	12/21/23	-	-	-	-	-	-	-	-	-	-	-	-	-	-	-
AT LSU	1/4/24	-	-	-	-	-	-	-	-	-	-	-	-	-	-	-
VS. ALABAMA	1/7/24	-	-	-	-	-	-	-	-	-	-	-	-	-	-	-
VS. SOUTH CAROLINA	1/11/24	-	-	-	-	-	-	-	-	-	-	-	-	-	-	-
AT VANDERBILT	1/14/24	-	-	-	-	-	-	-	-	-	-	-	-	-	-	-
VS. GEORGIA	1/18/24	-	-	-	-	-	-	-	-	-	-	-	-	-	-	-
AT. KENTUCKY	1/21/24	-	-	-	-	-	-	-	-	-	-	-	-	-	-	-
VS. TEXAS A&M	1/25/24	-	-	-	-	-	-	-	-	-	-	-	-	-	-	-
VS. ARKANSAS	1/28/24	-	-	-	-	-	-	-	-	-	-	-	-	-	-	-
AT TENNESSEE	2/4/24	-	-	-	-	-	-	-	-	-	-	-	-	-	-	-
AT SOUTH CAROLINA	2/8/24	-	-	-	-	-	-	-	-	-	-	-	-	-	-	-
VS. AUBURN	2/11/24	-	-	-	-	-	-	-	-	-	-	-	-	-	-	-
AT ARKANSAS	2/18/24	-	-	-	-	-	-	-	-	-	-	-	-	-	-	-
AT FLORIDA	2/22/24	-	-	-	-	-	-	-	-	-	-	-	-	-	-	-
VS. OLE MISS	2/26/24	-	-	-	-	-	-	-	-	-	-	-	-	-	-	-
VS. VANDERBILT	2/29/24	-	-	-	-	-	-	-	-	-	-	-	-	-	-	-
AT MISSISSIPPI STATE	3/3/24	-	-	-	-	-	-	-	-	-	-	-	-	-	-	-

CAREER STATS

SEASON	G-GS	MIN	MPG	FG-A	FG%	3FG-A	3FG%	FT-A	FT%	O	D	REB / AVG	PF	FO	AST / TO	BS / S	TP	AVG.
2019-20	12-0	219	18.3	20-45	.444	0-0	.000	15-23	.652	26	33	59 / 4.9	32	2	4 / 13	15 / 5	55	4.6
2020-21	17-0	194	11.4	33-55	.600	0-0	.000	18-23	.783	34	22	56 / 3.3	22	0	3 / 16	10 / 5	84	4.9
2021-22	33-23	726	22.0	119-193	.617	0-0	.000	50-80	.625	101	84	185 / 5.6	84	3	28 / 32	29 / 22	288	8.7
2022-23	33-32	621	18.8	107-189	.566	0-0	.000	41-67	.612	101	87	188 / 5.7	81	1	31 / 37	31 / 12	255	7.7
2023-24	8-8	100	12.5	17-35	.500	0-1	.000	8-13	.615	14	22	36 / 4.5	20	2	6 / 7	4 / 6	42	5.3
<b>TOTAL</b>	<b>103-63</b>	<b>1860</b>	<b>18.0</b>	<b>296-517</b>	<b>.575</b>	<b>0-1</b>	<b>.000</b>	<b>132-206</b>	<b>.640</b>	<b>276</b>	<b>248</b>	<b>524 / 5.0</b>	<b>239</b>	<b>8</b>	<b>72 / 105</b>	<b>89 / 50</b>	<b>724</b>	<b>7.0</b>

**HANNAH LINTHACUM**



FORWARD • 6-4 • FRESHMAN • [MAJOR] • JEFFERSON CITY, MO.



**SEASON/CAREER HIGHS**

**POINTS**

SEASON: 20, VS. KANSAS CITY (12/21/23)

CAREER: 20, VS. KANSAS CITY (12/21/23)

**FIELD GOALS**

SEASON: 7, VS. KANSAS CITY (12/21/23)

CAREER: 7, VS. KANSAS CITY (12/21/23)

**FIELD GOAL ATTEMPTS**

SEASON: 11, VS. KANSAS CITY (12/21/23)

CAREER: 11, VS. KANSAS CITY (12/21/23)

**3-POINTERS**

SEASON: 2, VS. KANSAS CITY (12/21/23)

CAREER: 2, VS. KANSAS CITY (12/21/23)

**3-POINT ATTEMPTS**

SEASON: 3, VS. KANSAS CITY (12/21/23)

CAREER: 3, VS. KANSAS CITY (12/21/23)

**FREE THROWS**

SEASON: 4, VS. KANSAS CITY (12/21/23)

CAREER: 4, VS. KANSAS CITY (12/21/23)

**FREE THROW ATTEMPTS**

SEASON: 5, VS. KANSAS CITY (12/21/23)

CAREER: 5, VS. KANSAS CITY (12/21/23)

**ASSISTS**

SEASON: 2, VS. INDIANA STATE (11/9/23)

CAREER: 2, VS. INDIANA STATE (11/9/23)

**BLOCKS**

SEASON: 1 (3x), LAST AT ILLINOIS (12/17/23)

CAREER: 1 (3x), LAST AT ILLINOIS (12/17/23)

**REBOUNDS**

SEASON: 6 (4x), LAST VS. MO. ST. (12/6/23)

CAREER: 6 (4x), LAST VS. MO. ST. (12/6/23)

**STEALS**

SEASON: 1 (3x), LAST VS. UMKC (12/21/23)

CAREER: 1 (3x), LAST VS. UMKC (12/21/23)

**MINUTES**

SEASON: 20, VS. KANSAS CITY (12/21/23)

CAREER: 20, VS. KANSAS CITY (12/21/23)

@hlinthacum

@hannahlinthacum

- YOUNGEST OF THREE LINTHACUM SISTER ON THE ROSTER, JOINED BY MICAH AND SARAH
- MISSOURI CLASS 5 PLAYER OF THE YEAR
- TWO-TIME ALL-STATE BASKETBALL AND VOLLEYBALL
- ACHIEVED 1000 POINTS AND 1000 REBOUNDS
- EARNED ACADEMIC ALL-STATE HONORS
- FOURTH-GENERATION TIGER; GREAT-GRANDFATHER, GRANDFATHER AND FATHER ALL PLAYED FOOTBALL FOR MIZZOU

**GAME-BY-GAME STATS**

OPPONENT	DATE	ST.	MIN	PTS	REB	AST	STL	BLK	T/O	FG	FG%	3PT	3P%	FT	FT%	PF
VS. BELMONT	11/6/23		14	7	6	0	1	0	1	2-3	66.7	0-0	0.0	3-4	75.0	3
VS. INDIANA STATE	11/9/23		9	4	3	2	0	0	0	2-3	66.7	0-1	0.0	0-0	0.0	2
AT ST. LOUIS	11/12/23		10	0	2	0	1	0	0	0-0	0.0	0-0	0.0	0-0	0.0	1
VS. NORTH ALABAMA	11/14/23		7	0	0	0	0	0	1	0-1	0.0	0-0	0.0	0-0	0.0	0
VS. SOUTHERN INDIANA	11/20/23		7	1	2	0	0	1	0	0-1	0.0	0-0	0.0	1-2	50.0	2
TENNESSEE TECH	11/24/23		10	4	6	1	0	0	1	1-1	100.0	0-0	0.0	2-3	66.7	3
KENT STATE	11/25/23		6	3	1	0	0	1	1	1-1	100.0	1-1	100.0	0-0	0.0	3
AT VIRGINIA	11/30/23		2	0	0	0	0	0	0	0-0	0.0	0-0	0.0	0-0	0.0	
VS. SEMO	12/2/23	*	17	9	6	0	0	0	2	3-4	75.0	0-1	0.0	3-4	75.0	2
VS. MISSOURI STATE	12/6/23	*	16	4	6	1	0	0	0	1-3	33.3	0-1	0.0	2-2	100.0	1
KANSAS STATE	12/9/23		6	1	0	0	0	0	1	0-0	0.0	0-0	0.0	1-2	50.0	1
AT ILLINOIS	12/17/23	*	13	4	2	0	0	1	2	1-2	50.0	0-0	0.0	2-2	100.0	1
VS. KANSAS CITY	12/21/23	*	20	20	3	1	1	0	0	7-11	63.6	2-3	66.7	4-5	80.0	0
AT LSU	1/4/24	*	14	2	4	1	0	0	2	1-1	100.0	0-0	0.0	0-0	0.0	2
VS. ALABAMA	1/7/24	*	17	0	1	0	0	0	2	0-3	0.0	0-1	0.0	0-0	0.0	3
VS. SOUTH CAROLINA	1/11/24	*	9	0	0	1	0	0	0	0-1	0.0	0-1	0.0	0-0	0.0	4
AT VANDERBILT	1/14/24	*	11	0	2	0	0	0	1	0-1	0.0	0-0	0.0	0-2	0.0	2
VS. GEORGIA	1/18/24	*	16	6	4	1	0	0	1	3-3	100.0	0-0	0.0	0-0	0.0	4
AT KENTUCKY	1/21/24		-	-	-	-	-	-	-	-	-	-	-	-	-	-
VS. TEXAS A&M	1/25/24		-	-	-	-	-	-	-	-	-	-	-	-	-	-
VS. ARKANSAS	1/28/24		-	-	-	-	-	-	-	-	-	-	-	-	-	-
AT TENNESSEE	2/4/24		-	-	-	-	-	-	-	-	-	-	-	-	-	-
AT SOUTH CAROLINA	2/8/24		-	-	-	-	-	-	-	-	-	-	-	-	-	-
VS. AUBURN	2/11/24		-	-	-	-	-	-	-	-	-	-	-	-	-	-
AT ARKANSAS	2/18/24		-	-	-	-	-	-	-	-	-	-	-	-	-	-
AT FLORIDA	2/22/24		-	-	-	-	-	-	-	-	-	-	-	-	-	-
VS. OLE MISS	2/26/24		-	-	-	-	-	-	-	-	-	-	-	-	-	-
VS. VANDERBILT	2/29/24		-	-	-	-	-	-	-	-	-	-	-	-	-	-
AT MISSISSIPPI STATE	3/3/24		-	-	-	-	-	-	-	-	-	-	-	-	-	-

**CAREER STATS**

SEASON	G-GS	MIN	MPG	FG-A	FG%	3FG-A	3FG%	FT-A	FT%	O	D	REB / AVG	PF	FO	AST / TO	BS / S	TP	AVG.
2023-24	18-9	205	11.4	23-40	.575	3-9	.333	18-26	.692	18	30	48 / 2.7	35	0	8 / 15	3 / 3	67	3.7
<b>TOTAL</b>	<b>18-9</b>	<b>205</b>	<b>11.4</b>	<b>23-40</b>	<b>.575</b>	<b>3-9</b>	<b>.333</b>	<b>18-26</b>	<b>.692</b>	<b>18</b>	<b>30</b>	<b>48 / 2.7</b>	<b>35</b>	<b>0</b>	<b>8 / 15</b>	<b>3 / 3</b>	<b>67</b>	<b>3.7</b>

**MICAH LINTHACUM**



FORWARD • 6-4 • SENIOR • HEALTH SCIENCE • JEFFERSON CITY, MO.



**SEASON/CAREER HIGHS**

**POINTS**

SEASON: 3, VS. KANSAS CITY (12/21/23)

CAREER: 12, VS. OMAHA, (12/9/22)

**FIELD GOALS**

SEASON: 1 (2x), LAST VS. UMKC (12/21/23)

CAREER: 5, VS. OMAHA (12/9/22)

**FIELD GOAL ATTEMPTS**

SEASON: 1 (3x), LAST VS. UMKC (12/21/23)

CAREER: 5 (2x), LAST VS. OMAHA (12/9/22)

**3-POINTERS**

SEASON:

CAREER: 2, VS. OMAHA (12/9/22)

**3-POINT ATTEMPTS**

SEASON:

CAREER: 2, VS. OMAHA (12/9/22)

**FREE THROWS**

SEASON: 3, VS. KANSAS CITY (12/21/23)

CAREER: 2 (2x), LAST VS. BRADLEY(11/10/22)

**FREE THROW ATTEMPTS**

SEASON: 3, VS. KANSAS CITY (12/21/23)

CAREER: 4, VS. ORAL ROBERTS, (12/19/20)

**ASSISTS**

SEASON:

CAREER: 2, VS. OMAHA (12/9/22)

**BLOCKS**

SEASON:

CAREER: 1 (4x), LAST VS. OMAHA (12/9/22)

**REBOUNDS**

SEASON: 2, VS. SEMO (12/2/23)

CAREER: 5, VS. ORAL ROBERTS, (12/19/20)

**STEALS**

SEASON: 1 (3x), LAST VS. UMKC (12/21/23)

CAREER: 1 (5x), LAST VS. UMKC (12/21/23)

**MINUTES**

SEASON: 6 (2x), LAST VS. SEMO (12/2/23)

CAREER: 21, VS. OMAHA (12/9/22)

@micahlinthacum

@micahlinthacum

- OLDEST OF THREE LINTHACUM SISTER ON THE ROSTER, JOINED BY SARAH AND HANNAH
- FOURTH-GENERATION TIGER; GREAT-GRANDFATHER, GRANDFATHER AND FATHER ALL PLAYED FOOTBALL FOR MIZZOU
- 2022-23 WINTER SEC ACADEMIC HONOR ROLL
- 2020-21 WINTER SEC ACADEMIC HONOR ROLL
- 2019-20 FIRST-YEAR SEC ACADEMIC HONOR ROLL
- APPEARED IN A CAREER HIGH 19 GAMES FOR THE TIGERS IN 2022-23
- FINISHED THE SEASON SHOOTING 76.5 PERCENT FROM THE FIELD, INCLUDING FOUR THREES
- RANKED AS THE NO. 18 FORWARD IN THE CLASS OF 2019 BY ESPNW HOOPGURLZ
- TWO-TIME ALL-DISTRICT IN BASKETBALL

**GAME-BY-GAME STATS**

OPPONENT	DATE	ST.	MIN	PTS	REB	AST	STL	BLK	T/O	FG	FG%	3PT	3P%	FT	FT%	PF
VS. BELMONT	11/6/23	-	-	-	-	-	-	-	-	-	-	-	-	-	-	-
VS. INDIANA STATE	11/9/23	6	0	2	0	0	0	0	0	0-1	0.0	0-0	0.0	0-0	0.0	0
AT ST. LOUIS	11/12/23	-	-	-	-	-	-	-	-	-	-	-	-	-	-	-
VS. NORTH ALABAMA	11/14/23	-	-	-	-	-	-	-	-	-	-	-	-	-	-	-
VS. SOUTHERN INDIANA	11/20/23	5	0	1	0	1	0	0	0	0-0	0.0	0-0	0.0	0-0	0.0	2
TENNESSEE TECH	11/24/23	-	-	-	-	-	-	-	-	-	-	-	-	-	-	-
KENT STATE	11/25/23	-	-	-	-	-	-	-	-	-	-	-	-	-	-	-
AT VIRGINIA	11/30/23	-	-	-	-	-	-	-	-	-	-	-	-	-	-	-
VS. SEMO	12/2/23	6	2	0	0	0	0	0	1	1-1	100.0	0-0	0.0	0-0	0.0	0
VS. MISSOURI STATE	12/6/23	3	0	1	0	0	0	0	0	0-0	0.0	0-0	0.0	0-0	0.0	1
KANSAS STATE	12/9/23	-	-	-	-	-	-	-	-	-	-	-	-	-	-	-
AT ILLINOIS	12/17/23	-	-	-	-	-	-	-	-	-	-	-	-	-	-	-
VS. KANSAS CITY	12/21/23	3	3	1	0	1	0	0	0	1-1	100.0	0-0	0.0	1-1	100.0	0
AT LSU	1/4/24	1	0	0	0	0	0	0	0	0-0	0.0	0-0	0.0	0-0	0.0	0
VS. ALABAMA	1/7/24	-	-	-	-	-	-	-	-	-	-	-	-	-	-	-
VS. SOUTH CAROLINA	1/11/24	-	-	-	-	-	-	-	-	-	-	-	-	-	-	-
AT VANDERBILT	1/14/24	-	-	-	-	-	-	-	-	-	-	-	-	-	-	-
VS. GEORGIA	1/18/24	-	-	-	-	-	-	-	-	-	-	-	-	-	-	-
AT KENTUCKY	1/21/24	-	-	-	-	-	-	-	-	-	-	-	-	-	-	-
VS. TEXAS A&M	1/25/24	-	-	-	-	-	-	-	-	-	-	-	-	-	-	-
VS. ARKANSAS	1/28/24	-	-	-	-	-	-	-	-	-	-	-	-	-	-	-
AT TENNESSEE	2/4/24	-	-	-	-	-	-	-	-	-	-	-	-	-	-	-
AT SOUTH CAROLINA	2/8/24	-	-	-	-	-	-	-	-	-	-	-	-	-	-	-
VS. AUBURN	2/11/24	-	-	-	-	-	-	-	-	-	-	-	-	-	-	-
AT ARKANSAS	2/18/24	-	-	-	-	-	-	-	-	-	-	-	-	-	-	-
AT FLORIDA	2/22/24	-	-	-	-	-	-	-	-	-	-	-	-	-	-	-
VS. OLE MISS	2/26/24	-	-	-	-	-	-	-	-	-	-	-	-	-	-	-
VS. VANDERBILT	2/29/24	-	-	-	-	-	-	-	-	-	-	-	-	-	-	-
AT MISSISSIPPI STATE	3/3/24	-	-	-	-	-	-	-	-	-	-	-	-	-	-	-

**CAREER STATS**

SEASON	G-GS	MIN	MPG	FG-A	FG%	3FG-A	3FG%	FT-A	FT%	O	D	REB / AVG	PF	FO	AST / TO	BS / S	TP	AVG.
2020-21	10-0	60	6.0	5-12	.417	0-0	.000	2-5	.400	4	11	15 / 1.5	11	0	1 / 7	1 / 1	12	1.2
2021-22	11-0	42	3.8	6-13	.462	1-1	1.000	0-2	.000	5	2	7 / 0.6	3	0	0 / 1	0 / 0	13	1.2
2022-23	19-0	97	5.1	13-17	.765	4-5	.800	2-2	1.000	3	4	7 / 0.4	11	0	4 / 5	3 / 1	32	1.7
2023-24	6-0	24	4.0	2-3	.667	0-0	.000	1-1	1.000	1	4	5 / 0.8	3	0	0 / 1	0 / 2	5	0.8
<b>TOTAL</b>	<b>46-0</b>	<b>223</b>	<b>4.8</b>	<b>26-45</b>	<b>.578</b>	<b>5-6</b>	<b>.833</b>	<b>5-10</b>	<b>.500</b>	<b>13</b>	<b>21</b>	<b>34 / 0.7</b>	<b>28</b>	<b>0</b>	<b>5 / 14</b>	<b>4 / 4</b>	<b>62</b>	<b>1.3</b>

**HAYLEY FRANK**



FORWARD • 6-1 • GRADUATE • ARCHITECTURAL STUDIES • STRAFFORD, MO.



**SEASON/CAREER HIGHS**

**POINTS**

SEASON: 30, VS. KENT STATE (11/25/23)

CAREER: 30, VS. KENT STATE (11/25/23)

**FIELD GOALS**

SEASON: 11, VS. NORTH ALABAMA (11/14/23)

CAREER: 11, VS. NORTH ALABAMA (11/14/23)

**FIELD GOAL ATTEMPTS**

SEASON: 19 (2x), LAST VS. LSU (1/6/24)

CAREER: 19 (2x), LAST VS. LSU (1/6/24)

**3-POINTERS**

SEASON: 6, VS. SOUTHERN INDIANA (11/20/23)

CAREER: 7, VS. TEXAS A&M (1/23/22)

**3-POINT ATTEMPTS**

SEASON: 10, VS. SOUTHERN INDIANA (11/20/23)

CAREER: 19 (2x), LAST VS. LSU (1/6/24)

**FREE THROWS**

SEASON: 11, VS. KENT STATE (11/25/23)

CAREER: 11 (2x), LAST VS. KENT STATE (11/25/23)

**FREE THROW ATTEMPTS**

SEASON: 11, VS. KENT STATE (11/25/23)

CAREER: 11 (2x), LAST VS. KENT STATE (11/25/23)

**ASSISTS**

SEASON: 4 (2x), LAST S. CAROLINA (1/11/23)

CAREER: 5 VS. ALABAMA (3/4/21)

**BLOCKS**

SEASON: 2 (5x), LAST VS. UMKC (12/21/23)

CAREER: 4, VS. AUBURN (1/6/20)

**REBOUNDS**

SEASON: 11, VS. SOUTHERN INDIANA (11/20/23)

CAREER: 13, VS. ARKANSAS, (3/3/22)

**STEALS**

SEASON: 2 (2x), LAST VS. KENT STATE (11/25/23)

CAREER: 4, AT ALABAMA (3/1/20)

**MINUTES**

SEASON: 40, AT VIRGINIA (11/30/23)

CAREER: 42, AT LSU (1/13/22)

@hayfrank43

@hayley\_frank43

- PRESEASON ALL-SEC FIRST TEAM (COACHES)
- TOP-10 IN SCORING IN MIZZOU HISTORY
- REPRESENTED MISSOURI ON THE SEC BASKETBALL LEADERSHIP COUNCIL
- RANKED FOURTH IN SEC FOR 3-POINT FIELD GOALS MADE AND 3-POINT FIELD GOAL PCT LAST SEASON
- 2022-23 ALL-SEC FIRST TEAM, 2021-22 ALL-SEC SECOND TEAM, 2019-20 ALL-SEC FRESHMAN TEAM
- THREE TIME WINTER SEC ACADEMIC HONOR ROLL MEMBER (2022-23, 2021-22, 2020-21)
- 2019-20 FIRST YEAR SEC ACADEMIC HONOR ROLL
- TWO-TME GATORADE MISSOURI GIRLS BASKETBALL PLAYER OF THE YEAR
- FINISHED AS THE STATE RECORD HOLDER IN REBOUNDS (1,629) AND 3-POINT PERCENTAGE (54.3, MINIMUM 100 MADE 3S) WHILE RANKING FIFTH IN ASSISTS (824) AND EIGHTH IN POINTS (3,003)

**GAME-BY-GAME STATS**

OPPONENT	DATE	ST.	MIN	PTS	REB	AST	STL	BLK	T/O	FG	FG%	3PT	3P%	FT	FT%	PF
VS. BELMONT	11/6/23	*	29	15	7	0	1	2	2	6-17	35.3	1-6	16.7	2-2	100.0	4
VS. INDIANA STATE	11/9/23	*	19	3	4	2	1	0	1	1-4	25.0	1-4	25.0	0-0	0.0	4
AT ST. LOUIS	11/12/23	*	30	12	7	3	1	0	1	3-11	27.3	2-5	40.0	4-5	80.0	4
VS. NORTH ALABAMA	11/14/23	*	35	29	7	1	0	0	1	11-18	61.1	2-4	50.0	5-6	83.3	4
VS. SOUTHERN INDIANA	11/20/23	*	35	29	7	1	0	0	1	11-18	61.1	2-4	50.0	5-6	83.3	4
TENNESSEE TECH	11/24/23	*	33	10	2	0	0	0	2	3-8	37.5	2-3	66.7	2-2	100.0	4
KENT STATE	11/25/23	*	36	30	8	2	2	2	4	8-19	42.1	3-8	37.5	11-11	100.0	4
AT VIRGINIA	11/30/23	*	40	21	7	2	0	2	6	6-14	42.9	2-9	22.2	7-7	100.0	5
VS. SEMO	12/2/23	*	24	18	9	4	0	0	1	7-9	77.8	1-3	33.3	3-3	100.0	1
VS. MISSOURI STATE	12/6/23	*	28	14	9	0	0	0	1	5-11	45.5	2-5	40.0	2-2	100.0	1
KANSAS STATE	12/9/23	*	32	13	9	1	0	0	3	5-11	45.5	1-4	25.0	2-2	100.0	5
AT ILLINOIS	12/17/23	*	35	13	9	2	0	0	1	4-8	50.0	1-3	33.3	4-6	66.7	1
VS. KANSAS CITY	12/21/23	*	28	6	7	3	0	2	2	2-8	25.0	2-5	40.0	0-0	0.0	3
AT LSU	1/4/24	*	37	22	2	2	0	0	1	8-19	42.1	4-12	33.3	2-2	100.0	3
VS. ALABAMA	1/7/24	*	37	15	7	0	1	0	2	6-12	50.0	1-3	33.3	2-2	100.0	2
VS. SOUTH CAROLINA	1/11/24	*	35	16	6	4	0	1	4	6-12	50.0	4-8	50.0	0-0	0.0	4
AT VANDERBILT	1/14/24	*	40	17	8	1	3	0	1	6-12	50.0	5-8	62.5	0-0	0.0	3
VS. GEORGIA	1/18/24	*	32	24	4	5	1	0	1	10-18	55.6	1-8	12.5	3-3	100.0	5
AT KENTUCKY	1/21/24	-	-	-	-	-	-	-	-	-	-	-	-	-	-	-
VS. TEXAS A&M	1/25/24	-	-	-	-	-	-	-	-	-	-	-	-	-	-	-
VS. ARKANSAS	1/28/24	-	-	-	-	-	-	-	-	-	-	-	-	-	-	-
AT TENNESSEE	2/4/24	-	-	-	-	-	-	-	-	-	-	-	-	-	-	-
AT SOUTH CAROLINA	2/8/24	-	-	-	-	-	-	-	-	-	-	-	-	-	-	-
VS. AUBURN	2/11/24	-	-	-	-	-	-	-	-	-	-	-	-	-	-	-
AT ARKANSAS	2/18/24	-	-	-	-	-	-	-	-	-	-	-	-	-	-	-
AT FLORIDA	2/22/24	-	-	-	-	-	-	-	-	-	-	-	-	-	-	-
VS. OLE MISS	2/26/24	-	-	-	-	-	-	-	-	-	-	-	-	-	-	-
VS. VANDERBILT	2/29/24	-	-	-	-	-	-	-	-	-	-	-	-	-	-	-
AT MISSISSIPPI STATE	3/3/24	-	-	-	-	-	-	-	-	-	-	-	-	-	-	-

**CAREER STATS**

SEASON	G-GS	MIN	MPG	FG-A	FG%	3FG-A	3FG%	FT-A	FT%	O	D	REB / AVG	PF	FO	AST / TO	BS / S	TP	AVG.
2019-20	31-8	752	24.3	119-274	.434	48-126	.381	79-90	.878	48	76	124 / 4.0	85	4	34 / 63	7 / 20	365	11.8
2020-21	20-17	604	30.2	88-165	.533	37-82	.451	40-46	.870	31	69	100 / 5.0	49	1	28 / 34	7 / 7	253	12.7
2021-22	31-31	1012	32.6	157-307	.511	80-173	.462	71-82	.866	31	126	157 / 5.1	80	1	47 / 48	21 / 17	465	15.0
2022-23	32-32	1028	32.1	172-369	.466	75-183	.410	73-86	.849	38	98	136 / 4.3	90	3	54 / 60	19 / 34	492	15.4
2023-24	18-18	578	32.1	107-227	.471	42-109	.385	48-53	.906	19	104	123 / 6.8	58	3	34 / 37	11 / 12	304	16.9
<b>TOTAL</b>	<b>132-109</b>	<b>3974</b>	<b>30.1</b>	<b>643-1342</b>	<b>.479</b>	<b>282-673</b>	<b>.419</b>	<b>311-357</b>	<b>.871</b>	<b>167</b>	<b>473</b>	<b>640 / 4.8</b>	<b>362</b>	<b>12</b>	<b>197 / 242</b>	<b>65 / 90</b>	<b>1879</b>	<b>14.2</b>

RADIO/TV CHART



**GRACE SLAUGHTER**

**0** 6-2 • G • FR.  
GRAIN VALLEY, MO.



**DE'MYLA BROWN**

**1** 5-7 • G • FR.  
NORTH LITTLE ROCK, ARK.



**MAMA DEMBELE**

**4** 5-6 • G • SR.  
MANLLEU, SPAIN



**HILKE FELDRAPPE**

**5** 6-3 • F • FR.  
BERLIN, GERMANY



**LUCIJA MILKOVIC**

**7** 6-6 • C • FR.  
SIBENIK, CROATIA



**ABBY FEIT**

**14** 6-1 • F • GR.  
NORMAL, ILL.



**SARAH LINTHACUM**

**20** 6-3 • F • JR.  
JEFFERSON CITY, MO.



**AVERI KROENKE**

**21** 5-11 • G • SO.  
COLUMBIA, MO



**ABBEY SCHREACKE**

**23** 6-0 • G • FR.  
QUINCY, ILL.



**ASHTON JUDD**

**24** 6-1 • G • SO.  
WEST PLAINS, MO



**ANGELIQUE NGALAKULONDI**

**30** 6-2 • F • GR.  
MANCHESTER, N.H.



**HANNAH LINTHACUM**

**34** 6-4 • F • FR.  
JEFFERSON CITY, MO.



**MICAH LINTHACUM**

**40** 6-4 • F • R-SR.  
JEFFERSON CITY, MO.



**HAYLEY FRANK**

**43** 6-1 • F • GR.  
STRAFFORD, MO.

COACHING STAFF



**ROBIN PINGETON**



**CHRIS BRACEY**



**JASMINE JAMES**



**PRESTON BEVERLY**

PRONUNCIATION GUIDE

ROBIN PINGETON	PINGE (RHYMES WITH HINGE)-TON
DE'MYLA BROWN	DEH-MY-LUH
MAMA DEMBELE	DEM-BELL-AY
HILKE FELDRAPPE	
LUCIJA MILKOVIC	
ANGELIQUE NGALAKULONDI	GALA-KUH-LON-DEE
MICAH LINTHACUM	LIN-THUH-COME
SARAH LINTHACUM	LIN-THUH-COME
HANNAH LINTHACUM	LIN-THUH-COME
AVERI KROENKE	CRON-KEY

PRONUNCIATIONS

PRONUNCIATION GUIDE

JENNY PUTNAM	DIRECTOR OF BASKETBALL OPERATIONS
JULIA FORD	SPECIAL ASSISTANT TO THE HC
WINSON TAM	HEAD VIDEO COORDINATOR
CHANTE STONEWALL	GRADUATE ASSISTANT
HALEY TROUP	GRADUATE ASSISTANT
LONDON FOSTER	GRADUATE ASSISTANT
ALLISON MOSEL	ATHLETIC TRAINER
TYLER STUART	ATHLETIC PERFORMANCE
JESSICA BUSER	ACADEMIC SERVICES
RACHEL BLUNT	SPORT ADMINISTRATOR

SUPPORT STAFF