



Officials: Brenda Pantoja, Metta Christensen, Jeffrey Smith

Northern Ky. - 41

Record: 0-2

NO.	Name	Min	FG			3P			FT			Rebounds			Fouls		TP	AS	TO	ST	Blocks		+/-
			M-A	M-A	M-A	OR	DR	TOT	PF	FD	OR	DR	TOT	BS	BA								
14	Abby Wolterman	F 18:25	2-7	0-0	4-4	2	2	4	1	2	8	1	0	0	0	1	0	0	0	0	1	-10	
35	Halle Idowu	F 23:00	1-9	0-2	1-1	1	5	6	1	1	3	2	1	0	1	4	1	0	1	4	-25		
12	Anna Hamilton	G 22:23	2-6	1-3	0-0	1	5	6	0	0	5	0	4	0	0	1	0	0	0	1	-8		
20	Macey Blevins	G 27:43	1-9	0-3	1-5	0	2	2	2	4	3	1	1	2	0	4	1	2	0	4	-19		
21	Jaci Jones	G 26:24	0-3	0-0	0-0	0	3	3	0	2	0	0	0	0	0	2	0	0	0	2	-31		
11	Kamora Morgan	20:60	3-5	0-0	0-0	1	0	1	0	0	6	1	1	0	0	1	1	0	0	1	-16		
33	Gabby Razzano	18:04	0-0	0-0	0-0	0	1	1	0	0	0	0	1	0	0	0	0	0	0	0	-9		
2	Kalissa Lacy	21:06	4-15	2-9	0-0	1	3	4	1	0	10	2	1	0	0	1	0	0	1	-14			
24	Madison French	11:40	2-5	0-1	0-0	0	1	1	1	0	4	0	0	0	0	0	0	0	2	-7			
22	Noelle Hubert	07:50	0-1	0-1	0-0	0	0	0	0	0	0	0	1	0	0	0	0	0	0	-6			
4	Paige Hodgson	02:25	1-1	0-0	0-0	0	0	0	0	0	2	0	0	1	0	0	0	0	0	0			
Team						4	2	6			0			0									
Totals			16-61	3-19	6-10	10	24	34	6	9	41	7	10	3	1	16					-29		

Technical Fouls::NONE

Shooting By Period		
1st FG%	5-14	35.7%
3PT%	1-2	50.0%
FT%	3-4	75%
2nd FG%	4-13	30.8%
3PT%	1-4	25.0%
FT%	0-1	0%
3rd FG%	4-18	22.2%
3PT%	1-9	11.1%
FT%	3-5	60%
4th FG%	3-16	18.8%
3PT%	0-4	0.0%
FT%	0-0	0%
GM FG%	16-61	26.2%
3PT%	3-19	15.8%
FT%	6-10	60.0%

Dead Ball Rebounds: 4, 0

Kentucky - 70

Record: 2-0

NO.	Name	Min	FG			3P			FT			Rebounds			Fouls		TP	AS	TO	ST	Blocks		+/-
			M-A	M-A	M-A	OR	DR	TOT	PF	FD	OR	DR	TOT	BS	BA								
7	Teonni Key	F 21:02	2-5	0-2	0-0	0	3	3	0	2	4	0	1	3	1	0	17						
32	Amelia Hassett	F 30:16	2-8	1-6	0-0	4	12	16	3	0	5	1	0	0	3	0	22						
13	Clara Strack	C 30:50	6-10	0-1	3-4	2	11	13	3	2	15	8	2	1	4	1	29						
3	Georgia Amooore	G 36:41	5-13	1-5	2-2	3	2	5	1	1	13	8	2	1	3	0	29						
10	Dazia Lawrence	G 22:45	4-9	2-4	0-0	1	1	2	2	0	10	2	2	1	0	0	18						
5	Cassidy Rowe	19:23	1-5	1-4	0-0	0	1	1	0	0	3	1	0	1	0	0	12						
17	Clara Silva	22:23	9-14	0-0	0-1	4	0	4	0	1	18	2	0	0	5	0	17						
4	Lexi Blue	08:31	0-4	0-3	0-0	2	1	3	0	0	0	0	0	0	0	0	1						
2	Saniah Tyler	03:19	0-0	0-0	0-0	0	1	1	0	0	0	0	0	0	0	0	0						
8	Tanah Becker	02:25	1-1	0-0	0-0	0	0	0	0	0	2	0	1	1	0	0	0						
11	Gabby Brooks	02:25	0-0	0-0	0-0	0	0	0	0	0	0	0	0	0	0	0	0						
Team						1	3	4			0			0									
Totals			30-69	5-25	5-7	17	35	52	9	6	70	22	8	8	16	1	29						

Technical Fouls::NONE

Shooting By Period		
1st FG%	8-16	50.0%
3PT%	2-5	40.0%
FT%	0-0	0%
2nd FG%	7-15	46.7%
3PT%	1-7	14.3%
FT%	3-4	75%
3rd FG%	8-22	36.4%
3PT%	1-6	16.7%
FT%	0-1	0%
4th FG%	7-16	43.8%
3PT%	1-7	14.3%
FT%	2-2	100%
GM FG%	30-69	43.5%
3PT%	5-25	20.0%
FT%	5-7	71.4%

Dead Ball Rebounds: 0, 0

	NKU	UKY
Biggest lead	1 (1 st 8:39)	31 (4 th 1:51)
Best Scoring Run	4(1 st 5:30)	7(2 nd 1:53)
Lead Changes	1	
Times Tied	2	
Time with Lead	00:12	37:20

Points from	NKU	UKY
Turnovers	4	9
Paint	24	42
Second Chance	12	6
Fast Breaks	0	10
Bench	22	23

	Period by Period Scoring				
	1st	2nd	3rd	4th	TOT
NKU	14	9	12	6	41
UKY	18	18	17	17	70



Officials: Brenda Pantoja, Metta Christensen, Jeffrey Smith

Period 1

Quarter Starters:

UKY	3 Amooore G	7 Key T	10 Lawrence D	13 Strack C	32 Hassett A
NKU	12 Hamilton A	14 Wolterman A	20 Blevins M	21 Jones J	35 Idowu H

Game Time	UKY	Score	Diff	NKU
10:00	7 KEY T jumpball won			35 IDOWU H jumpball lost
09:53	13 STRACK C 2pt FG outside the paint, jump shot missed			
09:53				12 HAMILTON A defensive rebound (1)
09:19				21 JONES J 2pt FG outside the paint, jump shot missed
09:16	32 HASSETT A defensive rebound (1)			
09:14	7 KEY T 3pt FG , jump shot missed			
09:09	3 AMOORE G offensive rebound (1)			
08:50	10 LAWRENCE D 3pt FG second chance, jump shot missed			
08:47				14 WOLTERMAN A defensive rebound (1)
08:39	32 HASSETT A foul shooting (1 - 1)			20 BLEVINS M foul drawn (1)
08:39				20 BLEVINS M free throw 1 - 2 missed
08:39				offensive dead ball rebound (1)
08:39		0-1	-1	20 BLEVINS M free throw 2 - 2 made (1)
08:27	3 AMOORE G 2pt FG in the paint, pull up jump shot made (2)	2-1	1	
08:11	jump ball situation			
08:03				20 BLEVINS M 2pt FG in the paint, jump shot blocked
08:03	32 HASSETT A block (1)			
07:59	13 STRACK C defensive rebound (1)			
07:46	32 HASSETT A 3pt FG , jump shot made (3)	5-1	4	
07:46	10 LAWRENCE D assist (1)			
07:26				12 HAMILTON A turnover bad pass (1)
07:08	10 LAWRENCE D 2pt FG from turnover outside the paint, jump shot missed			
07:06				21 JONES J defensive rebound (1)
06:53	10 LAWRENCE D foul shooting (1 - 2)			14 WOLTERMAN A foul drawn (1)
06:53		5-2	3	14 WOLTERMAN A free throw 1 - 2 made (1)
06:53		5-3	2	14 WOLTERMAN A free throw 2 - 2 made (2)
06:53				12 HAMILTON A substitution out
06:53				11 MORGAN K substitution in
06:34	7 KEY T 2pt FG in the paint, jump shot missed			
06:32				35 IDOWU H defensive rebound (1)
06:20				14 WOLTERMAN A 2pt FG in the paint, layup missed
06:17	13 STRACK C defensive rebound (2)			
06:08	3 AMOORE G 3pt FG , jump shot missed			
06:02				14 WOLTERMAN A defensive rebound (2)
05:45				35 IDOWU H 2pt FG in the paint, jump shot missed
05:42				35 IDOWU H offensive rebound (2)
05:30		5-5	0	11 MORGAN K 2pt FG second chance in the paint, pull up jump shot made (2)
05:14	3 AMOORE G turnover bad pass (1)			20 BLEVINS M steal (1)
05:13	10 LAWRENCE D substitution out			
05:13	5 ROWE C substitution in			
05:13				14 WOLTERMAN A substitution out
05:13				33 RAZZANO G substitution in



Officials: Brenda Pantoja, Metta Christensen, Jeffrey Smith

Game Time	UKY	Score	Diff	NKU
04:50				35 IDOWU H 2pt FG from turnover in the paint, jump shot blocked
04:50	7 KEY T block (1)			
04:46	7 KEY T defensive rebound (1)			
04:39	13 STRACK C 2pt FG in the paint, layup made (2)	7-5	2	
04:15		7-7	0	11 MORGAN K 2pt FG outside the paint, jump shot made (4)
03:59	5 ROWE C 3pt FG , jump shot made (3)	10-7	3	
03:59	13 STRACK C assist (1)			
03:29	7 KEY T steal (1)			11 MORGAN K turnover bad pass (1)
03:23	7 KEY T 2pt FG fast break from turnover in the paint, layup made (2)	12-7	5	
03:23	3 AMOORE G assist (1)			
02:49				21 JONES J 2pt FG outside the paint, jump shot blocked
02:49	3 AMOORE G block (1)			
02:45	13 STRACK C defensive rebound (3)			
02:33	3 AMOORE G 2pt FG outside the paint, jump shot missed			
02:30				21 JONES J defensive rebound (2)
02:25				20 BLEVINS M 2pt FG in the paint, layup blocked
02:25	32 HASSETT A block (2)			
02:23				offensive rebound (8)
02:24	Timeout media			
02:24	7 KEY T substitution out			
02:24	32 HASSETT A substitution out			
02:24	10 LAWRENCE D substitution in			
02:24	17 SILVA C substitution in			
02:24				20 BLEVINS M substitution out
02:24				21 JONES J substitution out
02:24				35 IDOWU H substitution out
02:24				2 LACY K substitution in
02:24				12 HAMILTON A substitution in
02:24				14 WOLTERMAN A substitution in
02:16		12-9	3	2 LACY K 2pt FG second chance in the paint, layup made (2)
01:58	17 SILVA C 2pt FG in the paint, layup made (2)	14-9	5	
01:58	13 STRACK C assist (2)			
01:39		14-11	3	12 HAMILTON A 2pt FG in the paint, layup made (2)
01:24	13 STRACK C 2pt FG in the paint, layup made (4)	16-11	5	
01:24	17 SILVA C assist (1)			
01:02	5 ROWE C steal (1)			12 HAMILTON A turnover lost ball (2)
00:53	17 SILVA C 2pt FG from turnover in the paint, layup missed			
00:50	3 AMOORE G offensive rebound (2)			
00:39	13 STRACK C turnover travel (1)			
00:39				11 MORGAN K substitution out
00:39				24 FRENCH M substitution in
00:39	13 STRACK C substitution out			
00:39	7 KEY T substitution in			
00:24				2 LACY K 3pt FG from turnover, jump shot missed
00:21	3 AMOORE G defensive rebound (3)			
00:17	7 KEY T 2pt FG fast break in the paint, layup made (4)	18-11	7	
00:17	3 AMOORE G assist (2)			
00:02				2 LACY K 2pt FG in the paint, layup blocked



Official Basketball Play by Play - 1st Period

Northern Ky. at Kentucky

11/07/24 Historic Memorial Coliseum, Lexington, KY
2024-25 Women's Basketball

Game Time: 6:00 PM

Game Duration: 1:40

Attendance: 4,188

Officials: Brenda Pantoja, Metta Christensen, Jeffrey Smith

Game Time	UKY	Score	Diff	NKU
00:02	3 AMOORE G block (2)			
00:02				offensive rebound (9)
00:00		18-14	4	2 LACY K 3pt FG second chance, jump shot made (5)
00:00				14 WOLTERMAN A assist (1)
END OF PERIOD				
UKY 18-14 NKU				



Northern Ky. at Kentucky

11/07/24 Historic Memorial Coliseum, Lexington, KY
2024-25 Women's Basketball

Game Time: 6:00 PM
Game Duration: 1:40
Attendance: 4,188

Officials: Brenda Pantoja, Metta Christensen, Jeffrey Smith

Northern Ky. - 14

NO.	Name	Min	FG			Rebounds			Fouls		TP	AS	TO	ST	Blocks		+/-
			M-A	M-A	M-A	OR	DR	TOT	PF	FD					BS	BA	
14	Abby Wolterman	F 07:11	0-1	0-0	2-2	0	2	2	0	1	2	1	0	0	0	0	1
35	Halle Idowu	F 07:36	0-2	0-0	0-0	1	1	2	0	0	0	0	0	0	0	1	-5
12	Anna Hamilton	G 05:31	1-1	0-0	0-0	0	1	1	0	0	2	0	2	0	0	0	-1
20	Macey Blevins	G 07:36	0-2	0-0	1-2	0	0	0	0	1	1	0	0	1	0	2	-5
21	Jaci Jones	G 07:36	0-2	0-0	0-0	0	2	2	0	0	0	0	0	0	0	1	-5
11	Kamora Morgan	06:14	2-2	0-0	0-0	0	0	0	0	0	4	0	1	0	0	0	-3
33	Gabby Razzano	05:13	0-0	0-0	0-0	0	0	0	0	0	0	0	0	0	0	0	-4
2	Kalissa Lacy	02:24	2-4	1-2	0-0	0	0	0	0	0	5	0	0	0	0	1	1
24	Madison French	00:39	0-0	0-0	0-0	0	0	0	0	0	0	0	0	0	0	0	1
Team						2	0	2			0		0				
Totals			5-14	1-2	3-4	3	6	9	0	2	14	1	3	1	0	5	-4

Shooting By Period		
1st FG%	5-14	35.7%
3PT%	1-2	50.0%
FT%	3-4	75%
GM FG%	5-14	35.7%
3PT%	1-2	50.0%
FT%	3-4	75.0%

Dead Ball Rebounds: 1, 0

Technical Fouls::NONE

Kentucky - 18

NO.	Name	Min	FG			Rebounds			Fouls		TP	AS	TO	ST	Blocks		+/-
			M-A	M-A	M-A	OR	DR	TOT	PF	FD					BS	BA	
7	Teonni Key	F 08:15	2-4	0-1	0-0	0	1	1	0	0	4	0	0	1	1	0	4
32	Amelia Hassett	F 07:36	1-1	1-1	0-0	0	1	1	1	0	3	0	0	0	2	0	5
13	Clara Strack	C 09:21	2-3	0-0	0-0	0	3	3	0	0	4	2	1	0	0	0	5
3	Georgia Amooore	G 10:00	1-3	0-1	0-0	2	1	3	0	0	2	2	1	0	2	0	4
10	Dazia Lawrence	G 07:11	0-2	0-1	0-0	0	0	0	1	0	0	1	0	0	0	0	-1
5	Cassidy Rowe	05:13	1-1	1-1	0-0	0	0	0	0	0	3	0	0	1	0	0	4
17	Clara Silva	02:24	1-2	0-0	0-0	0	0	0	0	0	2	1	0	0	0	0	-1
Team						0	0	0			0		0				
Totals			8-16	2-5	0-0	2	6	8	2	0	18	6	2	2	5	0	4

Shooting By Period		
1st FG%	8-16	50.0%
3PT%	2-5	40.0%
FT%	0-0	0%
GM FG%	8-16	50.0%
3PT%	2-5	40.0%
FT%	0-0	0.0%

Dead Ball Rebounds: 0, 0

Technical Fouls::NONE

	NKU	UKY
Biggest lead	1 (1 st 8:39)	7 (1 st 0:17)
Best Scoring Run	4 (1 st 5:30)	5 (1 st 7:46)
Lead Changes	1	
Times Tied	2	
Time with Lead	00:12	07:20

Points from	NKU	UKY
Turnovers	0	2
Paint	6	12
Second Chance	7	0
Fast Breaks	0	4
Bench	9	5

	Period by Period Scoring				
	1st	2nd	3rd	4th	TOT
NKU	14	9	12	6	41
UKY	18	18	17	17	70



Officials: Brenda Pantoja, Metta Christensen, Jeffrey Smith

Period 2

Quarter Starters:

UKY	3 Amoore G	10 Lawrence D	13 Strack C	17 Silva C	32 Hassett A
NKU	2 Lacy K	12 Hamilton A	14 Wolterman A	24 French M	33 Razzano G

Game Time	UKY	Score	Diff	NKU
10:00	5 ROWE C substitution out			
10:00	7 KEY T substitution out			
10:00	13 STRACK C substitution in			
10:00	32 HASSETT A substitution in			
09:33	13 STRACK C 2pt FG in the paint, layup made (6)	20-14	6	
09:20	10 LAWRENCE D steal (1)			33 RAZZANO G turnover bad pass (1)
09:10	3 AMOORE G 3pt FG from turnover, jump shot missed			
09:07				2 LACY K defensive rebound (1)
08:44		20-16	4	14 WOLTERMAN A 2pt FG in the paint, layup made (4)
08:44				2 LACY K assist (1)
08:25	13 STRACK C 3pt FG , jump shot missed			
08:22				24 FRENCH M defensive rebound (1)
08:15				14 WOLTERMAN A 2pt FG in the paint, layup missed
08:12	13 STRACK C defensive rebound (4)			
08:07	3 AMOORE G 2pt FG in the paint, layup missed			
08:06				defensive rebound (12)
08:06				2 LACY K substitution out
08:06				12 HAMILTON A substitution out
08:06				33 RAZZANO G substitution out
08:06				20 BLEVINS M substitution in
08:06				21 JONES J substitution in
08:06				35 IDOWU H substitution in
07:54				24 FRENCH M 2pt FG outside the paint, jump shot blocked
07:54	17 SILVA C block (1)			
07:50	13 STRACK C defensive rebound (5)			
07:41	3 AMOORE G 3pt FG , jump shot missed			
07:37				20 BLEVINS M defensive rebound (1)
07:11				35 IDOWU H 2pt FG in the paint, jump shot missed
07:08	32 HASSETT A defensive rebound (2)			
06:50	17 SILVA C 2pt FG outside the paint, jump shot made (4)	22-16	6	
06:50	13 STRACK C assist (3)			
06:34		22-18	4	14 WOLTERMAN A 2pt FG in the paint, layup made (6)
06:16	17 SILVA C 2pt FG outside the paint, turnaround jump shot made (6)	24-18	6	
06:16	10 LAWRENCE D assist (2)			
05:49				20 BLEVINS M 2pt FG in the paint, jump shot missed
05:46	13 STRACK C defensive rebound (6)			
05:28	3 AMOORE G 2pt FG in the paint, layup made (4)	26-18	8	
05:28	13 STRACK C assist (4)			
05:04		26-20	6	20 BLEVINS M 2pt FG in the paint, layup made (3)
05:04				35 IDOWU H assist (1)
05:04	10 LAWRENCE D foul shooting (2 - 1)			20 BLEVINS M foul drawn (2)
05:04	10 LAWRENCE D substitution out			



Officials: Brenda Pantoja, Metta Christensen, Jeffrey Smith

Game Time	UKY	Score	Diff	NKU
05:04	32 HASSETT A substitution out			
05:04	5 ROWE C substitution in			
05:04	7 KEY T substitution in			
05:04				14 WOLTERMAN A substitution out
05:04				24 FRENCH M substitution out
05:04				11 MORGAN K substitution in
05:04				12 HAMILTON A substitution in
05:04				20 BLEVINS M free throw 1 - 1 missed
05:03	13 STRACK C defensive rebound (7)			
04:52	13 STRACK C 2pt FG in the paint, layup made (8)	28-20	8	
04:52	17 SILVA C assist (2)			
04:34				11 MORGAN K 2pt FG in the paint, jump shot blocked
04:34	17 SILVA C block (2)			
04:29	3 AMOORE G defensive rebound (4)			
04:23	jump ball situation			
04:23	7 KEY T turnover lost ball (1)			20 BLEVINS M steal (2)
04:23	Timeout media			
04:00				20 BLEVINS M 3pt FG from turnover, jump shot missed
04:00	defensive rebound (15)			
03:48	17 SILVA C 2pt FG in the paint, layup made (8)	30-20	10	
03:48	13 STRACK C assist (5)			
03:37	jump ball situation			
03:37	7 KEY T steal (2)			20 BLEVINS M turnover lost ball (1)
03:22	17 SILVA C 2pt FG from turnover in the paint, layup missed			
03:19				35 IDOWU H defensive rebound (3)
03:11	13 STRACK C steal (1)			12 HAMILTON A turnover lost ball (3)
03:02	5 ROWE C 3pt FG from turnover, jump shot missed			
02:57				35 IDOWU H defensive rebound (4)
02:41				35 IDOWU H 3pt FG , jump shot missed
02:37	13 STRACK C defensive rebound (8)			
02:29	13 STRACK C foul drawn (1)			35 IDOWU H foul shooting (1 - 1)
02:29	17 SILVA C substitution out			
02:29	32 HASSETT A substitution in			
02:29	13 STRACK C free throw 1 - 2 made (9)	31-20	11	
02:29	13 STRACK C free throw 2 - 2 missed			
02:28	32 HASSETT A offensive rebound (3)			
02:22	32 HASSETT A 3pt FG second chance, jump shot missed			
02:19	13 STRACK C offensive rebound (9)			
02:19	13 STRACK C foul offensive (1 - 2)			21 JONES J foul drawn (1)
02:19	13 STRACK C turnover offensive (2)			
02:19				21 JONES J substitution out
02:19				35 IDOWU H substitution out
02:19				2 LACY K substitution in
02:19				33 RAZZANO G substitution in
02:02				2 LACY K 2pt FG from turnover in the paint, layup missed
01:59	32 HASSETT A defensive rebound (4)			
01:53	3 AMOORE G foul drawn (1)			20 BLEVINS M foul shooting (1 - 2)
01:53	3 AMOORE G free throw 1 - 2 made (5)	32-20	12	
01:53	3 AMOORE G free throw 2 - 2 made (6)	33-20	13	



Official Basketball Play by Play - 2nd Period
Northern Ky. at Kentucky
 11/07/24 Historic Memorial Coliseum, Lexington, KY
 2024-25 Women's Basketball

Game Time: 6:00 PM
Game Duration: 1:40
Attendance: 4,188

Officials: Brenda Pantoja, Metta Christensen, Jeffrey Smith

Game Time	UKY	Score	Diff	NKU
01:23		33-23	10	12 HAMILTON A 3pt FG , jump shot made (5)
01:01	7 KEY T 3pt FG , jump shot missed			
00:58				12 HAMILTON A defensive rebound (2)
00:33	7 KEY T steal (3)			12 HAMILTON A turnover bad pass (4)
00:08	3 AMOORE G 3pt FG from turnover, jump shot made (9)	36-23	13	
00:00				2 LACY K 3pt FG , jump shot missed
00:00				offensive dead ball rebound (2)
END OF PERIOD				
UKY 36-23 NKU				



Officials: Brenda Pantoja, Metta Christensen, Jeffrey Smith

Northern Ky. - 9

NO.	Name	F	Min	FG			Rebounds			Fouls		TP	AS	TO	ST	Blocks		+/-
				M-A	3P	FT	OR	DR	TOT	PF	FD					BS	BA	
14	Abby Wolterman	F	04:56	2-3	0-0	0-0	0	0	0	0	0	4	0	0	0	0	0	-2
35	Halle Idowu	F	05:47	0-2	0-1	0-0	0	2	2	1	0	0	1	0	0	0	0	-7
12	Anna Hamilton	G	06:58	1-1	1-1	0-0	0	1	1	0	0	3	0	2	0	0	0	-7
20	Macey Blevins	G	08:06	1-3	0-1	0-1	0	1	1	1	1	2	0	1	1	0	0	-9
21	Jaci Jones	G	05:47	0-0	0-0	0-0	0	0	0	0	1	0	0	0	0	0	0	-7
24	Madison French		04:56	0-1	0-0	0-0	0	1	1	0	0	0	0	0	0	0	1	-2
11	Kamora Morgan		05:04	0-1	0-0	0-0	0	0	0	0	0	0	0	0	0	0	1	-7
2	Kalissa Lacy		04:13	0-2	0-1	0-0	0	1	1	0	0	0	1	0	0	0	0	-2
33	Gabby Razzano		04:13	0-0	0-0	0-0	0	0	0	0	0	0	0	1	0	0	0	-2
Team							0	1	1		0		0					
Totals				4-13	1-4	0-1	0	7	7	2	2	9	2	4	1	0	2	-9

Shooting By Period		
2 nd FG%	4-13	30.8%
3PT%	1-4	25.0%
FT%	0-1	0%
GM FG%	4-13	30.8%
3PT%	1-4	25.0%
FT%	0-1	0.0%

Dead Ball Rebounds: 1, 0

Technical Fouls::NONE

Kentucky - 18

NO.	Name	F	Min	FG			Rebounds			Fouls		TP	AS	TO	ST	Blocks		+/-
				M-A	3P	FT	OR	DR	TOT	PF	FD					BS	BA	
7	Teonni Key	F	05:04	0-1	0-1	0-0	0	0	0	0	0	0	0	1	2	0	0	7
32	Amelia Hassett	F	07:25	0-1	0-1	0-0	1	2	3	0	0	0	0	0	0	0	0	5
13	Clara Strack	C	10:00	2-3	0-1	1-2	1	5	6	1	1	5	3	1	1	0	0	9
3	Georgia Amooore	G	10:00	2-5	1-3	2-2	0	1	1	0	1	7	0	0	0	0	0	9
10	Dazia Lawrence	G	04:56	0-0	0-0	0-0	0	0	0	1	0	0	1	0	1	0	0	2
17	Clara Silva		07:31	3-4	0-0	0-0	0	0	0	0	0	6	1	0	0	2	0	6
5	Cassidy Rowe		05:04	0-1	0-1	0-0	0	0	0	0	0	0	0	0	0	0	0	7
Team							0	1	1		0		0					
Totals				7-15	1-7	3-4	2	9	11	2	2	18	5	2	4	2	0	9

Shooting By Period		
2 nd FG%	7-15	46.7%
3PT%	1-7	14.3%
FT%	3-4	75%
GM FG%	7-15	46.7%
3PT%	1-7	14.3%
FT%	3-4	75.0%

Dead Ball Rebounds: 0, 0

Technical Fouls::NONE

	NKU	UKY
Biggest lead	0 (1 st 10:00)	13 (2 nd 1:53)
Best Scoring Run	3(2 nd 1:23)	7(2 nd 1:53)
Lead Changes	0	
Times Tied	0	
Time with Lead	00:00	09:33

Points from	NKU	UKY
Turnovers	0	3
Paint	6	8
Second Chance	0	0
Fast Breaks	0	0
Bench	0	6

	Period by Period Scoring				
	1st	2nd	3rd	4th	TOT
NKU	14	9	12	6	41
UKY	18	18	17	17	70



Officials: Brenda Pantoja, Metta Christensen, Jeffrey Smith

Northern Ky. - 23

NO.	Name	F	Min	FG	3P	FT	Rebounds			Fouls		TP	AS	TO	ST	Blocks		+/-
				M-A	M-A	M-A	OR	DR	TOT	PF	FD					BS	BA	
14	Abby Wolterman	F	12:07	2-4	0-0	2-2	0	2	2	0	1	6	1	0	0	0	0	-1
35	Halle Idowu	F	13:23	0-4	0-1	0-0	1	3	4	1	0	0	1	0	0	0	1	-12
12	Anna Hamilton	G	12:29	2-2	1-1	0-0	0	2	2	0	0	5	0	4	0	0	0	-8
20	Macey Blevins	G	15:42	1-5	0-1	1-3	0	1	1	1	2	3	0	1	2	0	2	-14
21	Jaci Jones	G	13:23	0-2	0-0	0-0	0	2	2	0	1	0	0	0	0	0	1	-12
11	Kamora Morgan		11:18	2-3	0-0	0-0	0	0	0	0	0	4	0	1	0	0	1	-10
33	Gabby Razzano		09:26	0-0	0-0	0-0	0	0	0	0	0	0	0	1	0	0	0	-6
2	Kalissa Lacy		06:37	2-6	1-3	0-0	0	1	1	0	0	5	1	0	0	0	1	-1
24	Madison French		05:35	0-1	0-0	0-0	0	1	1	0	0	0	0	0	0	0	1	-1
Team							2	1	3			0		0				
Totals				9-27	2-6	3-5	3	13	16	2	4	23	3	7	2	0	7	-13

Shooting By Period		
1st FG%	5-14	35.7%
3PT%	1-2	50.0%
FT%	3-4	75%
2nd FG%	4-13	30.8%
3PT%	1-4	25.0%
FT%	0-1	0%
GM FG%	9-27	33.3%
3PT%	2-6	33.3%
FT%	3-5	60.0%

Dead Ball Rebounds: 2, 0

Technical Fouls::NONE

Kentucky - 36

NO.	Name	F	Min	FG	3P	FT	Rebounds			Fouls		TP	AS	TO	ST	Blocks		+/-
				M-A	M-A	M-A	OR	DR	TOT	PF	FD					BS	BA	
7	Teonni Key	F	13:19	2-5	0-2	0-0	0	1	1	0	0	4	0	1	3	1	0	11
32	Amelia Hassett	F	15:01	1-2	1-2	0-0	1	3	4	1	0	3	0	0	0	2	0	10
13	Clara Strack	C	19:21	4-6	0-1	1-2	1	8	9	1	1	9	5	2	1	0	0	14
3	Georgia Amooore	G	20:00	3-8	1-4	2-2	2	2	4	0	1	9	2	1	0	2	0	13
10	Dazia Lawrence	G	12:07	0-2	0-1	0-0	0	0	0	2	0	0	2	0	1	0	0	1
5	Cassidy Rowe		10:17	1-2	1-2	0-0	0	0	0	0	0	3	0	0	1	0	0	11
17	Clara Silva		09:55	4-6	0-0	0-0	0	0	0	0	0	8	2	0	0	2	0	5
Team							0	1	1			0		0				
Totals				15-31	3-12	3-4	4	15	19	4	2	36	11	4	6	7	0	13

Shooting By Period		
1st FG%	8-16	50.0%
3PT%	2-5	40.0%
FT%	0-0	0%
2nd FG%	7-15	46.7%
3PT%	1-7	14.3%
FT%	3-4	75%
GM FG%	15-31	48.4%
3PT%	3-12	25.0%
FT%	3-4	75.0%

Dead Ball Rebounds: 0, 0

Technical Fouls::NONE

	NKU	UKY
Biggest lead	1 (1 st 8:39)	13 (2 nd 1:53)
Best Scoring Run	4 (1 st 5:30)	7 (2 nd 1:53)
Lead Changes	1	
Times Tied	2	
Time with Lead	00:12	17:20

Points from	NKU	UKY
Turnovers	0	5
Paint	12	20
Second Chance	7	0
Fast Breaks	0	4
Bench	9	11

	Period by Period Scoring				
	1st	2nd	3rd	4th	TOT
NKU	14	9	12	6	41
UKY	18	18	17	17	70



Officials: Brenda Pantoja, Metta Christensen, Jeffrey Smith

Period 3

Quarter Starters:

UKY	3 Amoore G	7 Key T	10 Lawrence D	13 Strack C	32 Hassett A
NKU	12 Hamilton A	14 Wolterman A	20 Blevins M	21 Jones J	35 Idowu H

Game Time	UKY	Score	Diff	NKU
10:00	5 ROWE C substitution out			
10:00	10 LAWRENCE D substitution in			
10:00				2 LACY K substitution out
10:00				11 MORGAN K substitution out
10:00				33 RAZZANO G substitution out
10:00				14 WOLTERMAN A substitution in
10:00				21 JONES J substitution in
10:00				35 IDOWU H substitution in
09:33				35 IDOWU H 2pt FG in the paint, turnaround jump shot blocked
09:33	32 HASSETT A block (3)			
09:29	32 HASSETT A defensive rebound (5)			
09:28	10 LAWRENCE D 2pt FG fast break in the paint, layup made (2)	38-23	15	
09:28	32 HASSETT A assist (1)			
09:03				20 BLEVINS M 2pt FG in the paint, jump shot blocked
09:03	13 STRACK C block (1)			
09:03				offensive rebound (17)
08:57		38-25	13	35 IDOWU H 2pt FG second chance in the paint, layup made (2)
08:57	13 STRACK C foul shooting (2 - 1)			35 IDOWU H foul drawn (1)
08:57		38-26	12	35 IDOWU H free throw 1 - 1 made (3)
08:44	10 LAWRENCE D 3pt FG , jump shot missed			
08:41	3 AMOORE G offensive rebound (5)			
08:39	Timeout media			
08:36	13 STRACK C 2pt FG second chance in the paint, layup blocked			
08:36				35 IDOWU H block (1)
08:32	13 STRACK C offensive rebound (10)			
08:32	jump ball situation			
08:29	10 LAWRENCE D 2pt FG second chance outside the paint, jump shot missed			
08:26				12 HAMILTON A defensive rebound (3)
08:02				35 IDOWU H 3pt FG , jump shot missed
08:00	7 KEY T defensive rebound (2)			
08:00	7 KEY T foul drawn (1)			14 WOLTERMAN A foul personal (1 - 1)
07:45	10 LAWRENCE D 2pt FG in the paint, pull up jump shot made (4)	40-26	14	
07:45	3 AMOORE G assist (3)			
07:30				35 IDOWU H 2pt FG in the paint, layup blocked
07:30	13 STRACK C block (2)			
07:26	13 STRACK C defensive rebound (11)			
07:12	10 LAWRENCE D turnover bad pass (1)			
07:05	32 HASSETT A foul personal (2 - 2)			20 BLEVINS M foul drawn (3)
07:05				12 HAMILTON A substitution out
07:05				2 LACY K substitution in
07:00		40-28	12	2 LACY K 2pt FG from turnover in the paint, jump shot made (7)



Officials: Brenda Pantoja, Metta Christensen, Jeffrey Smith

Game Time	UKY	Score	Diff	NKU
07:00				35 IDOWU H assist (2)
06:47	10 LAWRENCE D 3pt FG , jump shot made (7)	43-28	15	
06:47	3 AMOORE G assist (4)			
06:25				20 BLEVINS M 3pt FG , jump shot missed
06:23	32 HASSETT A defensive rebound (6)			
06:16	3 AMOORE G 2pt FG outside the paint, jump shot made (11)	45-28	17	
05:49				35 IDOWU H 2pt FG in the paint, jump shot blocked
05:49	13 STRACK C block (3)			
05:47				14 WOLTERMAN A offensive rebound (3)
05:47	13 STRACK C foul shooting (3 - 3)			14 WOLTERMAN A foul drawn (2)
05:47	7 KEY T substitution out			
05:47	10 LAWRENCE D substitution out			
05:47	5 ROWE C substitution in			
05:47	17 SILVA C substitution in			
05:47				21 JONES J substitution out
05:47				35 IDOWU H substitution out
05:47				11 MORGAN K substitution in
05:47				33 RAZZANO G substitution in
05:47		45-29	16	14 WOLTERMAN A free throw 1 - 2 made (7)
05:47		45-30	15	14 WOLTERMAN A free throw 2 - 2 made (8)
05:47	13 STRACK C substitution out			
05:47	4 BLUE L substitution in			
05:47				14 WOLTERMAN A substitution out
05:47				21 JONES J substitution in
05:30	3 AMOORE G 2pt FG outside the paint, jump shot missed			
05:27	17 SILVA C offensive rebound (1)			
05:25	4 BLUE L 3pt FG second chance, jump shot missed			
05:22	32 HASSETT A offensive rebound (7)			
05:04	3 AMOORE G 3pt FG second chance, jump shot missed			
05:00	17 SILVA C offensive rebound (2)			
05:00	17 SILVA C 2pt FG second chance in the paint, tip-in layup made (10)	47-30	17	
04:30				2 LACY K 2pt FG outside the paint, jump shot missed
04:27	32 HASSETT A defensive rebound (8)			
04:15	3 AMOORE G foul offensive (1 - 4)			21 JONES J foul drawn (2)
04:15	3 AMOORE G turnover offensive (2)			
04:15				21 JONES J substitution out
04:15				12 HAMILTON A substitution in
04:15				Timeout media
04:01				20 BLEVINS M 3pt FG from turnover, jump shot missed
03:58				2 LACY K offensive rebound (2)
03:56				12 HAMILTON A 3pt FG from turnover second chance, jump shot blocked
03:56	3 AMOORE G block (3)			
03:51				12 HAMILTON A offensive rebound (4)
03:44				2 LACY K 2pt FG from turnover second chance in the paint, layup missed
03:42	32 HASSETT A defensive rebound (9)			
03:37	17 SILVA C 2pt FG outside the paint, jump shot missed			
03:34				12 HAMILTON A defensive rebound (5)



Officials: Brenda Pantoja, Metta Christensen, Jeffrey Smith

Game Time	UKY	Score	Diff	NKU
03:29	32 HASSETT A foul personal (3 - 5)			20 BLEVINS M foul drawn (4)
03:29				20 BLEVINS M free throw 1 - 2 missed
03:29				offensive dead ball rebound (3)
03:29				20 BLEVINS M free throw 2 - 2 missed
03:28	32 HASSETT A defensive rebound (10)			
03:13	32 HASSETT A 3pt FG , jump shot missed			
03:10				2 LACY K defensive rebound (3)
02:48		47-33	14	2 LACY K 3pt FG , jump shot made (10)
02:48				11 MORGAN K assist (1)
02:26	5 ROWE C 2pt FG in the paint, floating jump shot missed			
02:22	32 HASSETT A offensive rebound (11)			
02:20	32 HASSETT A 2pt FG second chance in the paint, jump shot missed			
02:20	offensive rebound (33)			
02:20	32 HASSETT A substitution out			
02:20	10 LAWRENCE D substitution in			
02:20				Timeout 30 Sec
02:20				33 RAZZANO G substitution out
02:20				35 IDOWU H substitution in
02:17	3 AMOORE G 2pt FG second chance outside the paint, jump shot missed			
02:15	17 SILVA C offensive rebound (3)			
02:14	17 SILVA C 2pt FG second chance in the paint, jump shot missed			
02:11	4 BLUE L offensive rebound (1)			
02:08	Timeout 30 Sec			
02:05	17 SILVA C 2pt FG second chance in the paint, layup made (12)	49-33	16	
02:05	3 AMOORE G assist (5)			
02:05	17 SILVA C foul drawn (1)			20 BLEVINS M foul shooting (2 - 2)
02:05	17 SILVA C free throw 1 - 1 missed			
02:04				20 BLEVINS M defensive rebound (2)
01:48				12 HAMILTON A 3pt FG , jump shot missed
01:45	5 ROWE C defensive rebound (1)			
01:40	3 AMOORE G 2pt FG fast break in the paint, driving layup made (13)	51-33	18	
01:40	5 ROWE C assist (1)			
01:13		51-35	16	11 MORGAN K 2pt FG in the paint, layup made (6)
01:13				20 BLEVINS M assist (1)
00:58	10 LAWRENCE D 2pt FG in the paint, jump shot missed			
00:56	10 LAWRENCE D offensive rebound (1)			
00:54	5 ROWE C 3pt FG second chance, jump shot missed			
00:50				35 IDOWU H defensive rebound (5)
00:43				2 LACY K 3pt FG , jump shot missed
00:40				11 MORGAN K offensive rebound (1)
00:38				2 LACY K 3pt FG second chance, jump shot missed
00:35	defensive rebound (38)			
00:35	4 BLUE L substitution out			
00:35	13 STRACK C substitution in			
00:35				12 HAMILTON A substitution out
00:35				20 BLEVINS M substitution out



Official Basketball Play by Play - 3rd Period
Northern Ky. at Kentucky
11/07/24 Historic Memorial Coliseum, Lexington, KY
2024-25 Women's Basketball

Game Time: 6:00 PM
Game Duration: 1:40
Attendance: 4,188

Officials: Brenda Pantoja, Metta Christensen, Jeffrey Smith

Game Time	UKY	Score	Diff	NKU
00:35				14 WOLTERMAN A substitution in
00:35				21 JONES J substitution in
00:20	17 SILVA C 2pt FG in the paint, layup made (14)	53-35	18	
00:20	13 STRACK C assist (6)			
00:00				2 LACY K 3pt FG , jump shot missed
00:00				offensive dead ball rebound (4)
END OF PERIOD				
UKY 53-35 NKU				



Northern Ky. at Kentucky

11/07/24 Historic Memorial Coliseum, Lexington, KY
2024-25 Women's Basketball

Game Time: 6:00 PM
Game Duration: 1:40
Attendance: 4,188

Officials: Brenda Pantoja, Metta Christensen, Jeffrey Smith

Northern Ky. - 12

NO.	Name	Min	FG			Rebounds			Fouls		TP	AS	TO	ST	Blocks		+/-
			M-A	3P	FT	OR	DR	TOT	PF	FD					BS	BA	
14	Abby Wolterman	F 04:48	0-0	0-0	2-2	1	0	1	1	1	2	0	0	0	0	0	-4
35	Halle Idowu	F 06:33	1-5	0-1	1-1	0	1	1	0	1	3	1	0	0	1	3	-8
12	Anna Hamilton	G 06:35	0-2	0-2	0-0	1	2	3	0	0	0	0	0	0	0	1	0
20	Macey Blevins	G 09:25	0-3	0-2	0-2	0	1	1	1	2	0	1	0	0	0	1	-3
21	Jaci Jones	G 06:20	0-0	0-0	0-0	0	0	0	0	1	0	0	0	0	0	0	-8
2	Kalissa Lacy	07:05	2-7	1-4	0-0	1	1	2	0	0	5	0	0	0	0	0	-4
11	Kamora Morgan	05:47	1-1	0-0	0-0	1	0	1	0	0	2	1	0	0	0	0	-1
33	Gabby Razzano	03:27	0-0	0-0	0-0	0	0	0	0	0	0	0	0	0	0	0	3
Team						1	0	1			0						
Totals			4-18	1-9	3-5	5	5	10	2	5	12	3	0	0	1	5	-5

Shooting By Period		
3rd FG%	4-18	22.2%
3PT%	1-9	11.1%
FT%	3-5	60%
GM FG%	4-18	22.2%
3PT%	1-9	11.1%
FT%	3-5	60.0%

Dead Ball Rebounds: 2, 0

Technical Fouls::NONE

Kentucky - 17

NO.	Name	Min	FG			Rebounds			Fouls		TP	AS	TO	ST	Blocks		+/-
			M-A	3P	FT	OR	DR	TOT	PF	FD					BS	BA	
7	Teonni Key	F 04:13	0-0	0-0	0-0	0	1	1	0	1	0	0	0	0	0	0	4
32	Amelia Hassett	F 07:40	0-2	0-1	0-0	2	5	7	2	0	0	1	0	0	1	0	1
13	Clara Strack	C 04:48	0-1	0-0	0-0	1	1	2	2	0	0	1	0	0	3	1	4
3	Georgia Amooore	G 10:00	2-5	0-1	0-0	1	0	1	1	0	4	3	1	0	1	0	5
10	Dazia Lawrence	G 06:33	3-6	1-2	0-0	1	0	1	0	0	7	0	1	0	0	0	8
4	Lexi Blue	05:12	0-1	0-1	0-0	1	0	1	0	0	0	0	0	0	0	0	1
5	Cassidy Rowe	05:47	0-2	0-1	0-0	0	1	1	0	0	0	1	0	0	0	0	1
17	Clara Silva	05:47	3-5	0-0	0-1	3	0	3	0	1	6	0	0	0	0	0	1
Team						1	1	2			0						
Totals			8-22	1-6	0-1	10	9	19	5	2	17	6	2	0	5	1	5

Shooting By Period		
3rd FG%	8-22	36.4%
3PT%	1-6	16.7%
FT%	0-1	0%
GM FG%	8-22	36.4%
3PT%	1-6	16.7%
FT%	0-1	0.0%

Dead Ball Rebounds: 0, 0

Technical Fouls::NONE

	NKU	UKY
Biggest lead	0 (1 st 10:00)	18 (3 rd 1:40)
Best Scoring Run	3(3 rd 8:57)	5(3 rd 6:16)
Lead Changes	0	
Times Tied	0	
Time with Lead	00:00	09:33

	NKU	UKY
Points from		
Turnovers	2	0
Paint	6	12
Second Chance	5	4
Fast Breaks	0	4
Bench	7	6

	Period by Period Scoring				
	1st	2nd	3rd	4th	TOT
NKU	14	9	12	6	41
UKY	18	18	17	17	70



Officials: Brenda Pantoja, Metta Christensen, Jeffrey Smith

Period 4

Quarter Starters:

UKY	3 Amoore G	10 Lawrence D	13 Strack C	17 Silva C	32 Hassett A
NKU	2 Lacy K	11 Morgan K	14 Wolterman A	21 Jones J	35 Idowu H

Game Time	UKY	Score	Diff	NKU
10:00	5 ROWE C substitution out			
10:00	32 HASSETT A substitution in			
09:48				14 WOLTERMAN A 2pt FG in the paint, jump shot missed
09:45				14 WOLTERMAN A offensive rebound (4)
09:44				14 WOLTERMAN A 2pt FG second chance in the paint, jump shot missed
09:42	32 HASSETT A defensive rebound (12)			
09:42	jump ball situation			
09:31	10 LAWRENCE D 3pt FG , jump shot made (10)	56-35	21	
09:31	13 STRACK C assist (7)			
09:09				14 WOLTERMAN A 2pt FG in the paint, layup blocked
09:09	13 STRACK C block (4)			
09:05	13 STRACK C defensive rebound (12)			
08:58	32 HASSETT A 3pt FG , jump shot missed			
08:55				21 JONES J defensive rebound (3)
08:48	3 AMOORE G steal (1)			35 IDOWU H turnover lost ball (1)
08:34	13 STRACK C 2pt FG from turnover in the paint, layup made (11)	58-35	23	
08:34	3 AMOORE G assist (6)			
08:30				11 MORGAN K substitution out
08:30				14 WOLTERMAN A substitution out
08:30				24 FRENCH M substitution in
08:30				33 RAZZANO G substitution in
08:12		58-37	21	24 FRENCH M 2pt FG in the paint, turnaround jump shot made (2)
07:59	13 STRACK C 2pt FG in the paint, layup made (13)	60-37	23	
07:59	3 AMOORE G assist (7)			
07:50				Timeout 30 Sec
07:50				35 IDOWU H substitution out
07:50				22 HUBERT N substitution in
07:42				21 JONES J 2pt FG in the paint, layup blocked
07:42	17 SILVA C block (3)			
07:42				offensive rebound (29)
07:39				2 LACY K 3pt FG second chance, jump shot missed
07:37	defensive rebound (41)			
07:23	13 STRACK C foul drawn (2)			2 LACY K foul shooting (1 - 1)
07:23	13 STRACK C free throw 1 - 2 made (14)	61-37	24	
07:23	13 STRACK C free throw 2 - 2 made (15)	62-37	25	
07:04				24 FRENCH M 2pt FG outside the paint, jump shot missed
07:00	13 STRACK C defensive rebound (13)			
06:54	32 HASSETT A 3pt FG , jump shot missed			
06:51				33 RAZZANO G defensive rebound (1)
06:38				2 LACY K 3pt FG , jump shot missed
06:34	32 HASSETT A defensive rebound (13)			



Official Basketball Play by Play - 4th Period
Northern Ky. at Kentucky
 11/07/24 Historic Memorial Coliseum, Lexington, KY
 2024-25 Women's Basketball

Game Time: 6:00 PM
Game Duration: 1:40
Attendance: 4,188

Officials: Brenda Pantoja, Metta Christensen, Jeffrey Smith

Game Time	UKY	Score	Diff	NKU
06:29	13 STRACK C 2pt FG in the paint, layup missed			
06:26	17 SILVA C offensive rebound (4)			
06:26	17 SILVA C 2pt FG second chance in the paint, tip-in layup made (16)	64-37	27	
06:02				22 HUBERT N 3pt FG , jump shot missed
05:59	10 LAWRENCE D defensive rebound (2)			
05:55	10 LAWRENCE D turnover travel (2)			
05:55	10 LAWRENCE D substitution out			
05:55	7 KEY T substitution in			
05:55				2 LACY K substitution out
05:55				20 BLEVINS M substitution in
05:37		64-39	25	24 FRENCH M 2pt FG from turnover in the paint, layup made (4)
05:19	17 SILVA C 2pt FG in the paint, turnaround jump shot missed			
05:18	32 HASSETT A offensive rebound (14)			
05:14	32 HASSETT A 3pt FG second chance, jump shot missed			
05:11				defensive rebound (31)
04:47				20 BLEVINS M 2pt FG in the paint, layup blocked
04:47	17 SILVA C block (4)			
04:42	7 KEY T defensive rebound (3)			
04:24	32 HASSETT A 2pt FG in the paint, layup made (5)	66-39	27	
04:24	13 STRACK C assist (8)			
03:52				24 FRENCH M 3pt FG , jump shot blocked
03:52	17 SILVA C block (5)			
03:49	32 HASSETT A defensive rebound (15)			
03:41	17 SILVA C 2pt FG outside the paint, turnaround jump shot made (18)	68-39	29	
03:41	3 AMOORE G assist (8)			
03:19	3 AMOORE G substitution out			
03:19	13 STRACK C substitution out			
03:19	17 SILVA C substitution out			
03:19	2 TYLER S substitution in			
03:19	4 BLUE L substitution in			
03:19	5 ROWE C substitution in			
03:19				20 BLEVINS M substitution out
03:19				21 JONES J substitution out
03:19				33 RAZZANO G substitution out
03:19				2 LACY K substitution in
03:19				12 HAMILTON A substitution in
03:19				35 IDOWU H substitution in
03:17				12 HAMILTON A 2pt FG outside the paint, jump shot missed
03:14	2 TYLER S defensive rebound (1)			
02:48	7 KEY T foul drawn (2)			24 FRENCH M foul personal (1 - 2)
02:41	4 BLUE L 3pt FG , jump shot missed			
02:37				35 IDOWU H defensive rebound (6)
02:28				12 HAMILTON A 2pt FG in the paint, layup missed
02:26	32 HASSETT A defensive rebound (16)			
02:25	7 KEY T substitution out			
02:25	32 HASSETT A substitution out			
02:25	8 BECKER T substitution in			
02:25	11 BROOKS G substitution in			



Official Basketball Play by Play - 4th Period
Northern Ky. at Kentucky
 11/07/24 Historic Memorial Coliseum, Lexington, KY
 2024-25 Women's Basketball

Game Time: 6:00 PM
Game Duration: 1:40
Attendance: 4,188

Officials: Brenda Pantoja, Metta Christensen, Jeffrey Smith

Game Time	UKY	Score	Diff	NKU
02:25				24 FRENCH M substitution out
02:25				35 IDOWU H substitution out
02:25				4 HODGSON P substitution in
02:25				11 MORGAN K substitution in
02:10	4 BLUE L 3pt FG , jump shot missed			
02:06				12 HAMILTON A defensive rebound (6)
01:55	8 BECKER T steal (1)			2 LACY K turnover lost ball (1)
01:51	8 BECKER T 2pt FG fast break from turnover in the paint, layup made (2)	70-39	31	
01:34		70-41	29	4 HODGSON P 2pt FG in the paint, layup made (2)
01:34				2 LACY K assist (2)
01:12	8 BECKER T turnover lost ball (1)			4 HODGSON P steal (1)
01:06				11 MORGAN K 2pt FG from turnover in the paint, jump shot missed
01:03	4 BLUE L defensive rebound (2)			
00:57	4 BLUE L 2pt FG in the paint, jump shot missed			
00:54				2 LACY K defensive rebound (4)
00:40				22 HUBERT N turnover bad pass (1)
00:15	5 ROWE C 3pt FG from turnover, jump shot missed			
00:12	4 BLUE L offensive rebound (3)			
END OF GAME				
UKY 70-41 NKU				



Northern Ky. at Kentucky

11/07/24 Historic Memorial Coliseum, Lexington, KY
2024-25 Women's Basketball

Game Time: 6:00 PM
Game Duration: 1:40
Attendance: 4,188

Officials: Brenda Pantoja, Metta Christensen, Jeffrey Smith

Northern Ky. - 6

NO.	Name	F	Min	FG			Rebounds			Fouls		TP	AS	TO	ST	Blocks		+/-
				M-A	3P	FT	OR	DR	TOT	PF	FD					BS	BA	
14	Abby Wolterman	F	01:30	0-3	0-0	0-0	1	0	1	0	0	0	0	0	0	1	-5	
35	Halle Idowu	F	03:04	0-0	0-0	0-0	0	1	1	0	0	0	0	1	0	0	-5	
12	Anna Hamilton	G	03:19	0-2	0-0	0-0	0	1	1	0	0	0	0	0	0	0	0	
20	Macey Blevins	G	02:36	0-1	0-0	0-0	0	0	0	0	0	0	0	0	0	1	-2	
21	Jaci Jones	G	06:41	0-1	0-0	0-0	0	1	1	0	0	0	0	0	0	1	-11	
24	Madison French		06:05	2-4	0-1	0-0	0	0	0	1	0	4	0	0	0	1	-6	
33	Gabby Razzano		05:11	0-0	0-0	0-0	0	1	1	0	0	0	0	0	0	0	-6	
22	Noelle Hubert		07:50	0-1	0-1	0-0	0	0	0	0	0	0	0	1	0	0	-6	
2	Kalissa Lacy		07:24	0-2	0-2	0-0	0	1	1	1	0	0	1	1	0	0	-9	
4	Paige Hodgson		02:25	1-1	0-0	0-0	0	0	0	0	0	2	0	0	1	0	0	
11	Kamora Morgan		03:55	0-1	0-0	0-0	0	0	0	0	0	0	0	0	0	0	-5	
Team							1	1	2			0			0			
Totals				3-16	0-4	0-0	2	6	8	2	0	6	1	3	1	0	4	-11

Shooting By Period		
4 th FG%	3-16	18.8%
3PT%	0-4	0.0%
FT%	0-0	0%
GM FG%	3-16	18.8%
3PT%	0-4	0.0%
FT%	0-0	0.0%

Dead Ball Rebounds: 0, 0

Technical Fouls::NONE

Kentucky - 17

NO.	Name	F	Min	FG			Rebounds			Fouls		TP	AS	TO	ST	Blocks		+/-
				M-A	3P	FT	OR	DR	TOT	PF	FD					BS	BA	
7	Teonni Key	F	03:30	0-0	0-0	0-0	0	1	1	0	1	0	0	0	0	0	2	
32	Amelia Hassett	F	07:35	1-4	0-3	0-0	1	4	5	0	0	2	0	0	0	0	11	
13	Clara Strack	C	06:41	2-3	0-0	2-2	0	2	2	0	1	6	2	0	0	1	11	
3	Georgia Amooore	G	06:41	0-0	0-0	0-0	0	0	0	0	0	0	3	0	1	0	11	
10	Dazia Lawrence	G	04:05	1-1	1-1	0-0	0	1	1	0	0	3	0	1	0	0	9	
17	Clara Silva		06:41	2-3	0-0	0-0	1	0	1	0	0	4	0	0	0	3	11	
2	Saniah Tyler		03:19	0-0	0-0	0-0	0	1	1	0	0	0	0	0	0	0	0	
4	Lexi Blue		03:19	0-3	0-2	0-0	1	1	2	0	0	0	0	0	0	0	0	
5	Cassidy Rowe		03:19	0-1	0-1	0-0	0	0	0	0	0	0	0	0	0	0	0	
8	Tanah Becker		02:25	1-1	0-0	0-0	0	0	0	0	0	2	0	1	1	0	0	
11	Gabby Brooks		02:25	0-0	0-0	0-0	0	0	0	0	0	0	0	0	0	0	0	
Team							0	1	1			0			0			
Totals				7-16	1-7	2-2	3	11	14	0	2	17	5	2	2	4	0	11

Shooting By Period		
4 th FG%	7-16	43.8%
3PT%	1-7	14.3%
FT%	2-2	100%
GM FG%	7-16	43.8%
3PT%	1-7	14.3%
FT%	2-2	100.0%

Dead Ball Rebounds: 0, 0

Technical Fouls::NONE

	NKU	UKY
Biggest lead	0 (1 st 10:00)	31 (4 th 1:51)
Best Scoring Run	2(4 th 8:12)	6(4 th 6:26)
Lead Changes	0	
Times Tied	0	
Time with Lead	00:00	09:48

	NKU	UKY
Points from		
Turnovers	2	4
Paint	6	10
Second Chance	0	2
Fast Breaks	0	2
Bench	6	6

Period by Period Scoring					
	1st	2nd	3rd	4th	TOT
NKU	14	9	12	6	41
UKY	18	18	17	17	70



Northern Ky. at Kentucky

11/07/24 Historic Memorial Coliseum, Lexington, KY
2024-25 Women's Basketball

Game Time: 6:00 PM
Game Duration: 1:40
Attendance: 4,188

Officials: Brenda Pantoja, Metta Christensen, Jeffrey Smith

Northern Ky. - 18

NO.	Name	Min	FG			Rebounds			Fouls		TP	AS	TO	ST	Blocks		+/-
			M-A	3P	FT	OR	DR	TOT	PF	FD					BS	BA	
14	Abby Wolterman	F 06:18	0-3	0-0	2-2	2	0	2	1	1	2	0	0	0	0	1	-9
35	Halle Idowu	F 09:37	1-5	0-1	1-1	0	2	2	0	1	3	1	1	0	1	3	-13
12	Anna Hamilton	G 09:54	0-4	0-2	0-0	1	3	4	0	0	0	0	0	0	0	1	0
20	Macey Blevins	G 12:01	0-4	0-2	0-2	0	1	1	1	2	0	1	0	0	0	2	-5
21	Jaci Jones	G 13:01	0-1	0-0	0-0	0	1	1	0	1	0	0	0	0	0	1	-19
2	Kalissa Lacy	14:29	2-9	1-6	0-0	1	2	3	1	0	5	1	1	0	0	0	-13
11	Kamora Morgan	09:42	1-2	0-0	0-0	1	0	1	0	0	2	1	0	0	0	0	-6
33	Gabby Razzano	08:38	0-0	0-0	0-0	0	1	1	0	0	0	0	0	0	0	0	-3
24	Madison French	06:05	2-4	0-1	0-0	0	0	0	1	0	4	0	0	0	0	1	-6
22	Noelle Hubert	07:50	0-1	0-1	0-0	0	0	0	0	0	0	0	1	0	0	0	-6
4	Paige Hodgson	02:25	1-1	0-0	0-0	0	0	0	0	0	2	0	0	1	0	0	0
Team						2	1	3			0			0			
Totals			7-34	1-13	3-5	7	11	18	4	5	18	4	3	1	1	9	-16

Shooting By Period		
3rd FG%	4-18	22.2%
3PT%	1-9	11.1%
FT%	3-5	60%
4th FG%	3-16	18.8%
3PT%	0-4	0.0%
FT%	0-0	0%
GM FG%	7-34	20.6%
3PT%	1-13	7.7%
FT%	3-5	60.0%

Dead Ball Rebounds: 2, 0

Technical Fouls::NONE

Kentucky - 34

NO.	Name	Min	FG			Rebounds			Fouls		TP	AS	TO	ST	Blocks		+/-
			M-A	3P	FT	OR	DR	TOT	PF	FD					BS	BA	
7	Teonni Key	F 07:43	0-0	0-0	0-0	0	2	2	0	2	0	0	0	0	0	0	6
32	Amelia Hassett	F 15:15	1-6	0-4	0-0	3	9	12	2	0	2	1	0	0	1	0	12
13	Clara Strack	C 11:29	2-4	0-0	2-2	1	3	4	2	1	6	3	0	0	4	1	15
3	Georgia Amooore	G 16:41	2-5	0-1	0-0	1	0	1	1	0	4	6	1	1	1	0	16
10	Dazia Lawrence	G 10:38	4-7	2-3	0-0	1	1	2	0	0	10	0	2	0	0	0	17
4	Lexi Blue	08:31	0-4	0-3	0-0	2	1	3	0	0	0	0	0	0	0	0	1
5	Cassidy Rowe	09:06	0-3	0-2	0-0	0	1	1	0	0	0	1	0	0	0	0	1
17	Clara Silva	12:28	5-8	0-0	0-1	4	0	4	0	1	10	0	0	0	3	0	12
2	Saniah Tyler	03:19	0-0	0-0	0-0	0	1	1	0	0	0	0	0	0	0	0	0
8	Tanah Becker	02:25	1-1	0-0	0-0	0	0	0	0	0	2	0	1	1	0	0	0
11	Gabby Brooks	02:25	0-0	0-0	0-0	0	0	0	0	0	0	0	0	0	0	0	0
Team						1	2	3			0			0			
Totals			15-38	2-13	2-3	13	20	33	5	4	34	11	4	2	9	1	16

Shooting By Period		
3rd FG%	8-22	36.4%
3PT%	1-6	16.7%
FT%	0-1	0%
4th FG%	7-16	43.8%
3PT%	1-7	14.3%
FT%	2-2	100%
GM FG%	15-38	39.5%
3PT%	2-13	15.4%
FT%	2-3	66.7%

Dead Ball Rebounds: 0, 0

Technical Fouls::NONE

	NKU	UKY
Biggest lead	0 (1 st 10:00)	31 (4 th 1:51)
Best Scoring Run	3(3 rd 8:57)	7(4 th 8:34)
Lead Changes	0	
Times Tied	0	
Time with Lead	00:00	19:33

	NKU	UKY
Points from		
Turnovers	4	4
Paint	12	22
Second Chance	5	6
Fast Breaks	0	6
Bench	13	12

	Period by Period Scoring				
	1st	2nd	3rd	4th	TOT
NKU	14	9	12	6	41
UKY	18	18	17	17	70



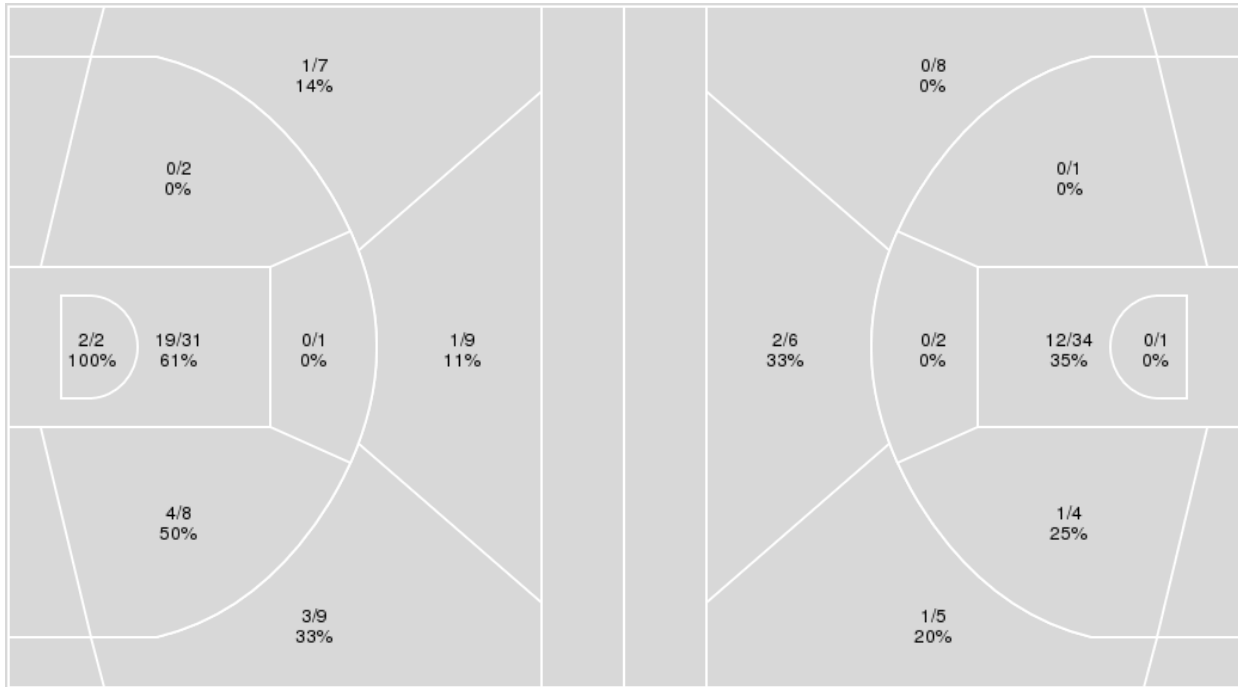
Officials: Brenda Pantoja, Metta Christensen, Jeffrey Smith

{ Players => 0, 2, 3, 4, 5, 7, 8, 10, 11, 12, 13, 17, 32; } FG Types => All;
 Results => All;

{ Players => 1, 2, 3, 4, 5, 11, 12, 14, 20, 21, 22, 24, 31, 33, 35; } FG
 Types => All; Results => All;

Kentucky

Northern Ky.



Kentucky	M/A	%
Field Goals	30/69	43
2 Points	25/44	57
3 Points	5/25	20
Free Throws	5/7	71

Northern Ky.	M/A	%
Field Goals	16/61	26
2 Points	13/42	31
3 Points	3/19	16
Free Throws	6/10	60



Northern Ky. at Kentucky

11/07/24 Historic Memorial Coliseum, Lexington, KY
2024-25 Women's Basketball

Game Time: 6:00 PM
Game Duration: 1:40
Attendance: 4,188

Officials: Brenda Pantoja, Metta Christensen, Jeffrey Smith

Northern Ky.

No	Name	Mins		Score		Points Diff		Points per Min		Assists		Rebounds		Steals		Turnovers	
		On	Off	On	Off	On	Off	On	Off	On	Off	On	Off	On	Off	On	Off
2	Kalissa Lacy	21:06	18:54	25 - 39	16 - 31	-14	-15	1.18	0.85	6	1	20	14	1	2	6	4
4	Paige Hodgson	02:25	37:35	2 - 2	39 - 68	0	-29	0.83	1.04	1	6	2	32	1	2	2	8
11	Kamora Morgan	20:60	19:00	20 - 36	21 - 34	-16	-13	0.95	1.10	3	4	19	15	3	0	8	2
12	Anna Hamilton	22:23	17:37	25 - 33	16 - 37	-8	-21	1.12	0.91	5	2	22	12	2	1	8	2
14	Abby Wolterman	18:25	21:35	25 - 35	16 - 35	-10	-19	1.36	0.74	4	3	16	18	1	2	4	6
20	Macey Blevins	27:43	12:17	28 - 47	13 - 23	-19	-10	1.01	1.06	4	3	23	11	2	1	5	5
21	Jaci Jones	26:24	13:36	20 - 51	21 - 19	-31	2	0.76	1.54	2	5	19	15	2	1	5	5
22	Noelle Hubert	07:50	32:10	4 - 10	37 - 60	-6	-23	0.51	1.15	1	6	6	28	1	2	2	8
24	Madison French	11:40	28:20	13 - 20	28 - 50	-7	-22	1.11	0.99	3	4	9	25	0	3	1	9
33	Gabby Razzano	18:04	21:56	23 - 32	18 - 38	-9	-20	1.27	0.82	3	4	14	20	0	3	4	6
35	Halle Idowu	23:00	17:00	20 - 45	21 - 25	-25	-4	0.87	1.24	3	4	20	14	2	1	5	5

Kentucky

No	Name	Mins		Score		Points Diff		Points per Min		Assists		Rebounds		Steals		Turnovers	
		On	Off	On	Off	On	Off	On	Off	On	Off	On	Off	On	Off	On	Off
2	Saniah Tyler	03:19	36:41	2 - 2	68 - 39	0	29	0.60	1.85	0	22	4	48	1	7	1	7
3	Georgia Amoore	36:41	03:19	68 - 39	2 - 2	29	0	1.85	0.60	22	0	48	4	7	1	7	1
4	Lexi Blue	08:31	31:29	8 - 7	62 - 34	1	28	0.94	1.97	2	20	17	35	1	7	2	6
5	Cassidy Rowe	19:23	20:37	33 - 21	37 - 20	12	17	1.70	1.79	10	12	28	24	6	2	5	3
7	Teonni Key	21:02	18:58	37 - 20	33 - 21	17	12	1.76	1.74	11	11	25	27	4	4	4	4
8	Tanah Becker	02:25	37:35	2 - 2	68 - 39	0	29	0.83	1.81	0	22	2	50	1	7	1	7
10	Dazia Lawrence	22:45	17:15	45 - 27	25 - 14	18	11	1.98	1.45	16	6	28	24	3	5	4	4
11	Gabby Brooks	02:25	37:35	2 - 2	68 - 39	0	29	0.83	1.81	0	22	2	50	1	7	1	7
13	Clara Strack	30:50	09:10	60 - 31	10 - 10	29	0	1.95	1.09	19	3	34	18	7	1	6	2
17	Clara Silva	22:23	17:37	41 - 24	29 - 17	17	12	1.83	1.65	16	6	33	19	5	3	4	4
32	Amelia Hassett	30:16	09:44	52 - 30	18 - 11	22	7	1.72	1.85	14	8	39	13	4	4	5	3

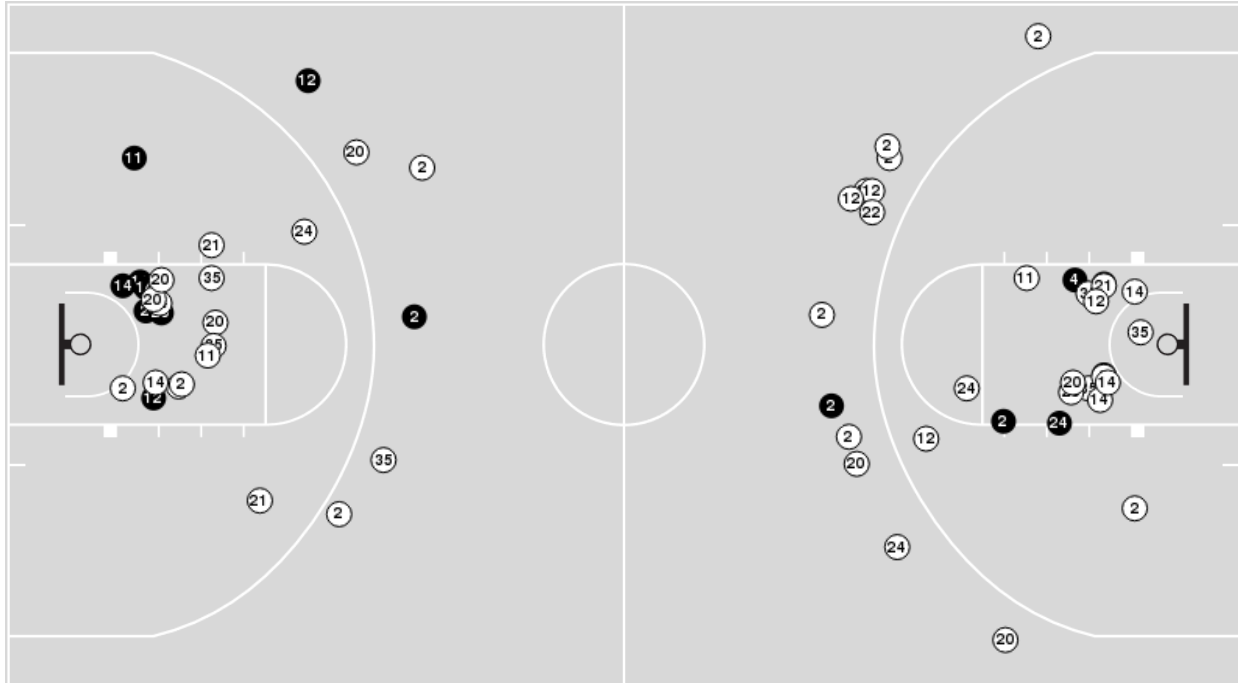


Officials: Brenda Pantoja, Metta Christensen, Jeffrey Smith

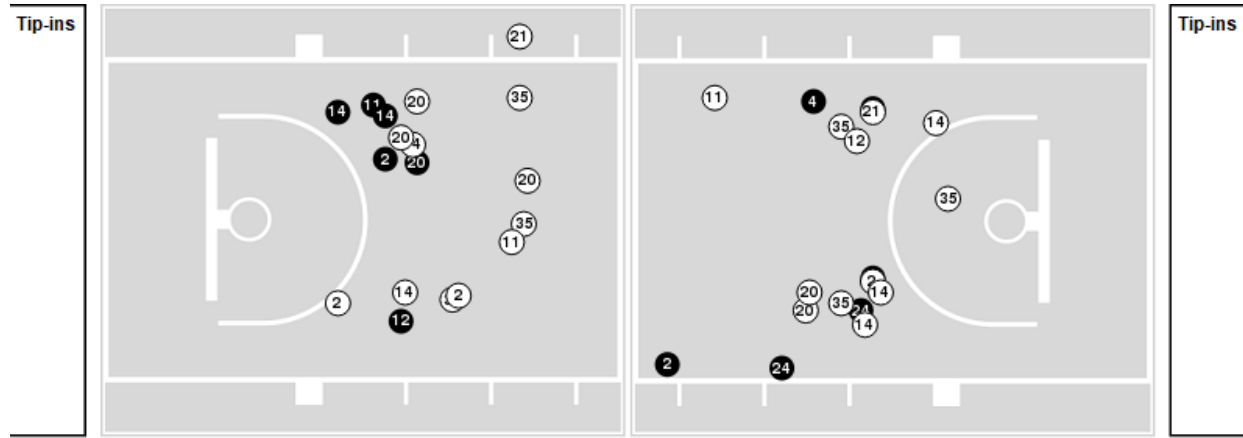
Players => 1, 2, 3, 4, 5, 11, 12, 14, 20, 21, 22, 24, 31, 33, 35 FG Types=>All Results=>All

Northern Ky.

All Field Goals



Blow Up Chart



● Made ○ Missed N - Player Number

Northern Ky.	M/A	%
Field Goals	16/61	26
2 Points	13/42	31
3 Points	3/19	16
Free Throws	6/10	60

Northern Ky.	M/A	%
Points in the Paint	24 (12 / 35)	34
Fast Break Points	0 (0/0)	0
Second Chance Points	12 (7/12)	58
Effective FG%	29	

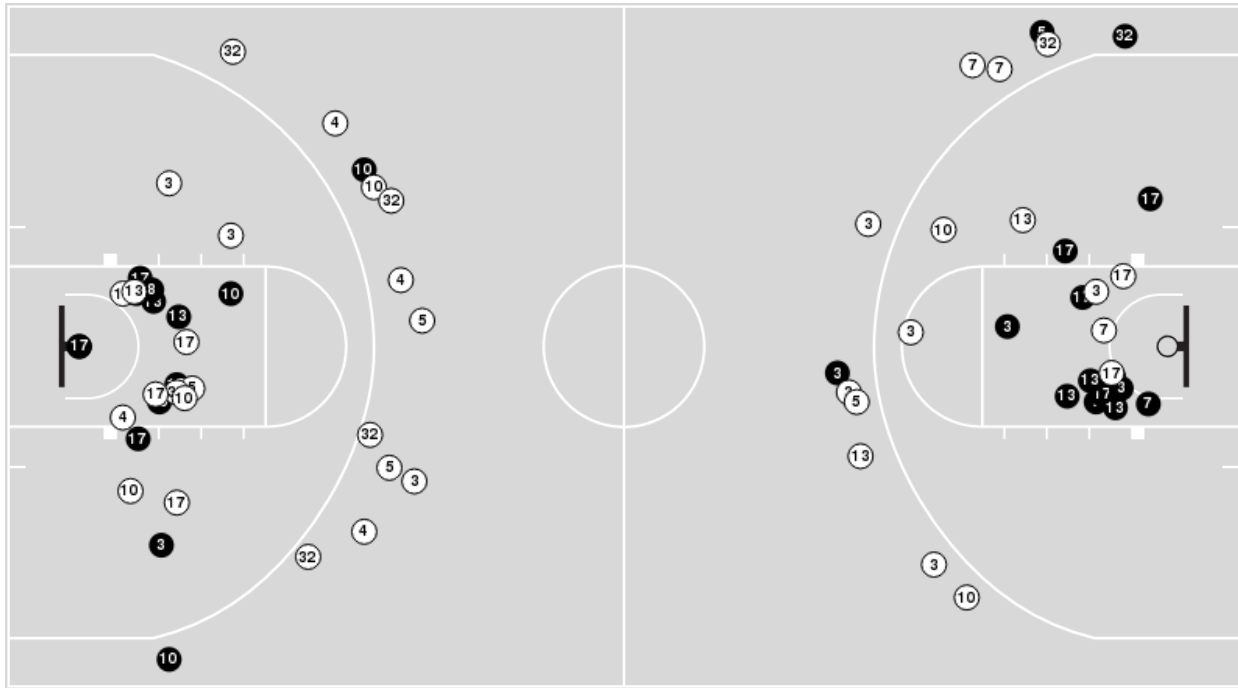


Officials: Brenda Pantoja, Metta Christensen, Jeffrey Smith

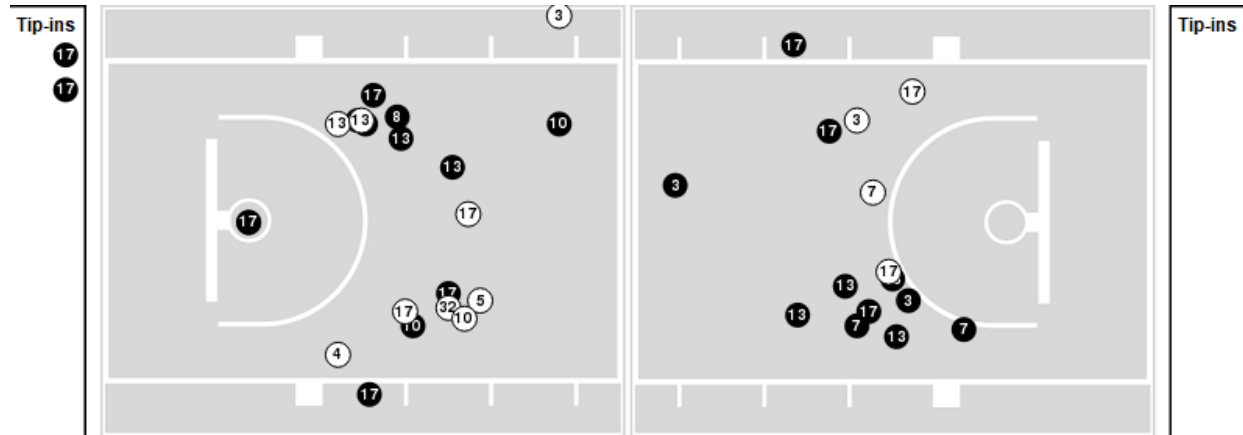
Players => 0, 2, 3, 4, 5, 7, 8, 10, 11, 12, 13, 17, 32 FG Types=>All Results=>All

Kentucky

All Field Goals



Blow Up Chart



● Made ○ Missed N - Player Number

Kentucky	M/A	%
Field Goals	30/69	43
2 Points	25/44	57
3 Points	5/25	20
Free Throws	5/7	71

Kentucky	M/A	%
Points in the Paint	42 (21 / 33)	64
Fast Break Points	10 (5/5)	100
Second Chance Points	6 (3/15)	20
Effective FG%	47	



Officials: Brenda Pantoja, Metta Christensen, Jeffrey Smith

Northern Ky.

Lineup	Quarter On	Time On	Quarter Off	Time Off	Time on Court	Score	Score Diff	Reb	Stl	Tov	Ass	PPP
12- Hamilton A/ 14- Wolterman A/ 20- Blevins M/ 21- Jones J/ 35- Idowu H/	1	10:00	1	06:53	03:07	3-5	-2	3	0	1	0	0.6303
11- Morgan K/ 14- Wolterman A/ 20- Blevins M/ 21- Jones J/ 35- Idowu H/	1	06:53	1	05:13	01:40	2-0	2	3	1	0	0	1.0000
11- Morgan K/ 20- Blevins M/ 21- Jones J/ 33- Razzano G/ 35- Idowu H/	1	05:13	1	02:24	02:49	2-7	-5	2	0	1	0	0.5000
2- Lacy K/ 11- Morgan K/ 12- Hamilton A/ 14- Wolterman A/ 33- Razzano G/	1	02:24	1	00:39	01:44	4-4	0	0	0	1	0	1.3333
2- Lacy K/ 12- Hamilton A/ 14- Wolterman A/ 24- French M/ 33- Razzano G/	1	00:39	2	08:06	02:33	5-4	1	4	0	1	2	1.0000
14- Wolterman A/ 20- Blevins M/ 21- Jones J/ 24- French M/ 35- Idowu H/	2	08:06	2	05:04	03:02	4-6	-2	1	0	0	1	0.8000
11- Morgan K/ 12- Hamilton A/ 20- Blevins M/ 21- Jones J/ 35- Idowu H/	2	05:04	2	02:19	02:45	0-5	-5	2	1	2	0	0.0000
2- Lacy K/ 11- Morgan K/ 12- Hamilton A/ 20- Blevins M/ 33- Razzano G/	2	02:19	3	10:00	02:19	3-5	-2	1	0	1	0	0.7500
12- Hamilton A/ 14- Wolterman A/ 20- Blevins M/ 21- Jones J/ 35- Idowu H/	3	10:00	3	07:05	02:55	3-4	-1	2	0	0	0	0.6757
2- Lacy K/ 14- Wolterman A/ 20- Blevins M/ 21- Jones J/ 35- Idowu H/	3	07:05	3	05:47	01:18	2-5	-3	1	0	0	1	1.0000
2- Lacy K/ 11- Morgan K/ 14- Wolterman A/ 20- Blevins M/ 33- Razzano G/	3	05:47	3	05:47	00:00	2-0	2	0	0	0	0	2.2727
2- Lacy K/ 11- Morgan K/ 20- Blevins M/ 21- Jones J/ 33- Razzano G/	3	05:47	3	04:15	01:32	0-2	-2	0	0	0	0	0.0000
2- Lacy K/ 11- Morgan K/ 12- Hamilton A/ 20- Blevins M/ 33- Razzano G/	3	04:15	3	02:20	01:55	3-0	3	4	0	0	1	1.0417
2- Lacy K/ 11- Morgan K/ 12- Hamilton A/ 20- Blevins M/ 35- Idowu H/	3	02:20	3	00:35	01:44	2-4	-2	3	0	0	1	0.6667
2- Lacy K/ 11- Morgan K/ 14- Wolterman A/ 21- Jones J/ 35- Idowu H/	3	00:35	4	08:30	02:05	0-7	-7	2	0	1	0	0.0000
2- Lacy K/ 21- Jones J/ 24- French M/ 33- Razzano G/ 35- Idowu H/	4	08:30	4	07:50	00:40	2-2	0	0	0	0	0	2.0000
2- Lacy K/ 21- Jones J/ 22- Hubert N/ 24- French M/ 33- Razzano G/	4	07:50	4	05:55	01:55	0-4	-4	2	0	0	0	0.0000
20- Blevins M/ 21- Jones J/ 22- Hubert N/ 24- French M/ 33- Razzano G/	4	05:55	4	03:19	02:36	2-4	-2	1	0	0	0	0.6667
2- Lacy K/ 12- Hamilton A/ 22- Hubert N/ 24- French M/ 35- Idowu H/	4	03:19	4	02:25	00:54	0-0	0	1	0	0	0	0.0000
2- Lacy K/ 4- Hodgson P/ 11- Morgan K/ 12- Hamilton A/ 22- Hubert N/	4	02:25	4	00:00	02:25	2-2	0	2	1	2	1	0.5000



Officials: Brenda Pantoja, Metta Christensen, Jeffrey Smith

Kentucky

Lineup	Quarter On	Time On	Quarter Off	Time Off	Time on Court	Score	Score Diff	Reb	Stl	Tov	Ass	PPP
3- Amoores G/ 7- Key T/ 10- Lawrence D/ 13- Strack C/ 32- Hassett A/	1	10:00	1	05:13	04:47	5-5	0	4	0	1	1	0.6250
3- Amoores G/ 5- Rowe C/ 7- Key T/ 13- Strack C/ 32- Hassett A/	1	05:13	1	02:24	02:49	7-2	5	2	1	0	2	1.7500
3- Amoores G/ 5- Rowe C/ 10- Lawrence D/ 13- Strack C/ 17- Silva C/	1	02:24	1	00:39	01:44	4-4	0	1	1	1	2	1.3333
3- Amoores G/ 5- Rowe C/ 7- Key T/ 10- Lawrence D/ 17- Silva C/	1	00:39	2	10:00	00:39	2-3	-1	1	0	0	1	2.0000
3- Amoores G/ 10- Lawrence D/ 13- Strack C/ 17- Silva C/ 32- Hassett A/	2	10:00	2	05:04	04:56	8-6	2	4	1	0	3	1.0000
3- Amoores G/ 5- Rowe C/ 7- Key T/ 13- Strack C/ 17- Silva C/	2	05:04	2	02:29	02:35	4-0	4	4	2	1	2	0.8000
3- Amoores G/ 5- Rowe C/ 7- Key T/ 13- Strack C/ 32- Hassett A/	2	02:29	3	10:00	02:29	6-3	3	3	1	1	0	1.5957
3- Amoores G/ 7- Key T/ 10- Lawrence D/ 13- Strack C/ 32- Hassett A/	3	10:00	3	05:47	04:13	9-5	4	6	0	1	3	1.5000
3- Amoores G/ 5- Rowe C/ 13- Strack C/ 17- Silva C/ 32- Hassett A/	3	05:47	3	05:47	00:00	0-2	-2	0	0	0	0	0.0000
3- Amoores G/ 4- Blue L/ 5- Rowe C/ 17- Silva C/ 32- Hassett A/	3	05:47	3	02:20	03:27	2-3	-1	8	0	1	0	0.5000
3- Amoores G/ 4- Blue L/ 5- Rowe C/ 10- Lawrence D/ 17- Silva C/	3	02:20	3	00:35	01:44	4-2	2	5	0	0	2	1.1628
3- Amoores G/ 5- Rowe C/ 10- Lawrence D/ 13- Strack C/ 17- Silva C/	3	00:35	4	10:00	00:35	2-0	2	0	0	0	1	2.0000
3- Amoores G/ 10- Lawrence D/ 13- Strack C/ 17- Silva C/ 32- Hassett A/	4	10:00	4	05:55	04:05	11-2	9	7	1	1	3	1.3959
3- Amoores G/ 7- Key T/ 13- Strack C/ 17- Silva C/ 32- Hassett A/	4	05:55	4	03:19	02:36	4-2	2	3	0	0	2	1.3333
2- Tyler S/ 4- Blue L/ 5- Rowe C/ 7- Key T/ 32- Hassett A/	4	03:19	4	02:25	00:54	0-0	0	2	0	0	0	0.0000
2- Tyler S/ 4- Blue L/ 5- Rowe C/ 8- Becker T/ 11- Brooks G/	4	02:25	4	00:00	02:25	2-2	0	2	1	1	0	0.5000



Officials: Brenda Pantoja, Metta Christensen, Jeffrey Smith

Northern Ky.

Lineup	Time	Score	Score Diff	Pts/Min	Reb	Stl	Tov	Ass	PPP
12- Hamilton A/ 14- Wolterman A/ 20- Blevins M/ 21- Jones J/ 35- Idowu H/	06:02	6-9	-3	0.9945	5	0	1	0	0.6522
2- Lacy K/ 11- Morgan K/ 12- Hamilton A/ 20- Blevins M/ 33- Razzano G/	04:14	6-5	1	1.4173	5	0	1	1	0.8721
14- Wolterman A/ 20- Blevins M/ 21- Jones J/ 24- French M/ 35- Idowu H/	03:02	4-6	-2	1.3187	1	0	0	1	0.8000
11- Morgan K/ 20- Blevins M/ 21- Jones J/ 33- Razzano G/ 35- Idowu H/	02:49	2-7	-5	0.7101	2	0	1	0	0.5000
11- Morgan K/ 12- Hamilton A/ 20- Blevins M/ 21- Jones J/ 35- Idowu H/	02:45	0-5	-5	0.0000	2	1	2	0	0.0000
20- Blevins M/ 21- Jones J/ 22- Hubert N/ 24- French M/ 33- Razzano G/	02:36	2-4	-2	0.7692	1	0	0	0	0.6667
2- Lacy K/ 12- Hamilton A/ 14- Wolterman A/ 24- French M/ 33- Razzano G/	02:33	5-4	1	1.9557	4	0	1	2	1.0000
2- Lacy K/ 4- Hodgson P/ 11- Morgan K/ 12- Hamilton A/ 22- Hubert N/	02:25	2-2	0	0.8276	2	1	2	1	0.5000
2- Lacy K/ 11- Morgan K/ 14- Wolterman A/ 21- Jones J/ 35- Idowu H/	02:05	0-7	-7	0.0000	2	0	1	0	0.0000
2- Lacy K/ 21- Jones J/ 22- Hubert N/ 24- French M/ 33- Razzano G/	01:55	0-4	-4	0.0000	2	0	0	0	0.0000
2- Lacy K/ 11- Morgan K/ 12- Hamilton A/ 20- Blevins M/ 35- Idowu H/	01:44	2-4	-2	1.1450	3	0	0	1	0.6667
2- Lacy K/ 11- Morgan K/ 12- Hamilton A/ 14- Wolterman A/ 33- Razzano G/	01:44	4-4	0	2.2945	0	0	1	0	1.3333
11- Morgan K/ 14- Wolterman A/ 20- Blevins M/ 21- Jones J/ 35- Idowu H/	01:40	2-0	2	1.2000	3	1	0	0	1.0000
2- Lacy K/ 11- Morgan K/ 20- Blevins M/ 21- Jones J/ 33- Razzano G/	01:32	0-2	-2	0.0000	0	0	0	0	0.0000
2- Lacy K/ 14- Wolterman A/ 20- Blevins M/ 21- Jones J/ 35- Idowu H/	01:18	2-5	-3	1.5385	1	0	0	1	1.0000
2- Lacy K/ 12- Hamilton A/ 22- Hubert N/ 24- French M/ 35- Idowu H/	00:54	0-0	0	0.0000	1	0	0	0	0.0000
2- Lacy K/ 21- Jones J/ 24- French M/ 33- Razzano G/ 35- Idowu H/	00:40	2-2	0	3.0000	0	0	0	0	2.0000
2- Lacy K/ 11- Morgan K/ 14- Wolterman A/ 20- Blevins M/ 33- Razzano G/	00:00	2-0	2	∞	0	0	0	0	2.2727



Officials: Brenda Pantoja, Metta Christensen, Jeffrey Smith

Kentucky

Lineup	Time	Score	Score Diff	Pts/Min	Reb	Stl	Tov	Ass	PPP
3- Amooore G/ 10- Lawrence D/ 13- Strack C/ 17- Silva C/ 32- Hassett A/	09:01	19-8	11	2.1072	11	2	1	6	1.1965
3- Amooore G/ 7- Key T/ 10- Lawrence D/ 13- Strack C/ 32- Hassett A/	09:00	14-10	4	1.5556	10	0	2	4	1.0000
3- Amooore G/ 5- Rowe C/ 7- Key T/ 13- Strack C/ 32- Hassett A/	05:18	13-5	8	2.4528	5	2	1	2	1.6753
3- Amooore G/ 4- Blue L/ 5- Rowe C/ 17- Silva C/ 32- Hassett A/	03:27	2-3	-1	0.5797	8	0	1	0	0.5000
3- Amooore G/ 7- Key T/ 13- Strack C/ 17- Silva C/ 32- Hassett A/	02:36	4-2	2	1.5385	3	0	0	2	1.3333
3- Amooore G/ 5- Rowe C/ 7- Key T/ 13- Strack C/ 17- Silva C/	02:35	4-0	4	1.5484	4	2	1	2	0.8000
2- Tyler S/ 4- Blue L/ 5- Rowe C/ 8- Becker T/ 11- Brooks G/	02:25	2-2	0	0.8276	2	1	1	0	0.5000
3- Amooore G/ 5- Rowe C/ 10- Lawrence D/ 13- Strack C/ 17- Silva C/	02:19	6-4	2	2.5751	1	1	1	3	1.5000
3- Amooore G/ 4- Blue L/ 5- Rowe C/ 10- Lawrence D/ 17- Silva C/	01:44	4-2	2	2.2901	5	0	0	2	1.1628
2- Tyler S/ 4- Blue L/ 5- Rowe C/ 7- Key T/ 32- Hassett A/	00:54	0-0	0	0.0000	2	0	0	0	0.0000
3- Amooore G/ 5- Rowe C/ 7- Key T/ 10- Lawrence D/ 17- Silva C/	00:39	2-3	-1	3.0457	1	0	0	1	2.0000
3- Amooore G/ 5- Rowe C/ 13- Strack C/ 17- Silva C/ 32- Hassett A/	00:00	0-2	-2	NaN	0	0	0	0	0.0000