



Arizona St. at Kentucky

11/26/24 Trojan Fieldhouse, Nashville
2024-25 Women's Basketball

Officials: Ify Seals, Troy Winders, Trey Miles

Arizona St. - 61

Record: 3-3

NO.	Name	F/C	Min	FG	3P	FT	Rebounds			Fouls		TP	AS	TO	ST	Blocks		+/-
				M-A	M-A	M-A	OR	DR	TOT	PF	FD					BS	BA	
0	Kennedy Basham	F	18:29	1-4	0-0	2-4	2	3	5	1	3	4	0	1	0	0	0	-14
32	Nevaeh Parkinson	C	29:32	4-10	0-0	4-6	5	4	9	4	6	12	1	1	0	0	3	0
3	Tyi Skinner	G	31:40	3-19	2-7	0-0	1	1	2	3	0	8	5	2	2	0	3	-16
7	Jazion Jackson	G	31:30	3-5	1-1	1-2	2	4	6	2	1	8	0	1	3	0	0	-7
23	Jalyn Brown	G	25:15	5-15	1-3	5-7	1	3	4	3	5	16	1	3	0	1	2	-16
4	Jyah LoVett		14:45	2-3	1-1	0-0	1	2	3	3	0	5	0	3	0	0	0	-3
13	Maggie Besselink		20:20	1-3	0-2	0-0	3	4	7	5	0	2	0	0	0	0	0	-6
10	Kennedy Fauntleroy		16:31	1-5	0-1	4-4	0	2	2	1	2	6	1	2	0	0	1	-7
1	Kadidia Toure		11:59	0-2	0-0	0-0	0	1	1	0	0	0	0	1	0	0	1	-11
Team							4	4	8			0		0				
Totals				20-66	5-15	16-23	19	28	47	22	17	61	8	14	5	1	10	-16

Technical Fouls::NONE

Shooting By Period		
1 st FG%	5-14	35.7%
3PT%	2-3	66.7%
FT%	2-4	50%
2 nd FG%	3-16	18.8%
3PT%	0-3	0.0%
FT%	3-5	60%
3 rd FG%	7-19	36.8%
3PT%	1-2	50.0%
FT%	8-10	80%
4 th FG%	5-17	29.4%
3PT%	2-7	28.6%
FT%	3-4	75%
GM FG%	20-66	30.3%
3PT%	5-15	33.3%
FT%	16-23	69.6%

Dead Ball Rebounds: 5, 0

Kentucky - 77

Record: 6-0

NO.	Name	F/C	Min	FG	3P	FT	Rebounds			Fouls		TP	AS	TO	ST	Blocks		+/-
				M-A	M-A	M-A	OR	DR	TOT	PF	FD					BS	BA	
7	Teonni Key	F	35:22	6-10	0-1	4-5	7	6	13	4	5	16	4	3	3	6	0	12
32	Amelia Hassett	F	30:20	2-10	1-7	3-4	1	8	9	3	2	8	2	0	0	0	1	22
13	Clara Strack	C	26:40	9-17	2-3	4-7	3	7	10	3	5	24	2	0	0	3	0	13
3	Georgia Amooore	G	37:39	7-16	2-6	4-4	0	0	0	1	4	20	9	5	3	0	0	11
10	Dazia Lawrence	G	25:27	2-6	1-3	0-0	0	2	2	2	2	5	0	2	0	0	0	10
5	Cassidy Rowe		29:59	0-3	0-3	0-0	0	0	0	3	2	0	2	0	0	0	0	10
17	Clara Silva		09:33	1-2	0-0	2-2	1	1	2	1	1	4	0	0	0	1	0	-6
4	Lexi Blue		04:60	0-0	0-0	0-0	0	0	0	0	1	0	0	0	0	0	0	8
Team							2	5	7			0		1				
Totals				27-64	6-23	17-22	14	29	43	17	22	77	19	11	6	10	1	16

Technical Fouls::NONE

Shooting By Period		
1 st FG%	6-17	35.3%
3PT%	1-7	14.3%
FT%	2-3	66.7%
2 nd FG%	10-14	71.4%
3PT%	2-4	50.0%
FT%	5-6	83.3%
3 rd FG%	4-14	28.6%
3PT%	1-5	20.0%
FT%	6-8	75%
4 th FG%	7-19	36.8%
3PT%	2-7	28.6%
FT%	4-5	80%
GM FG%	27-64	42.2%
3PT%	6-23	26.1%
FT%	17-22	77.3%

Dead Ball Rebounds: 0, 0

	ASU	UKY
Biggest lead	3 (1 st 2:45)	20 (2 nd 1:06)
Best Scoring Run	5 (1 st 2:45)	12 (2 nd 6:02)
Lead Changes	3	
Times Tied	2	
Time with Lead	03:50	33:59

Points from	ASU	UKY
Turnovers	3	13
Paint	20	26
Second Chance	13	10
Fast Breaks	5	11
Bench	13	4

	Period by Period Scoring				
	1st	2nd	3rd	4th	TOT
ASU	14	9	23	15	61
UKY	15	27	15	20	77



Arizona St. at Kentucky

11/26/24 Trojan Fieldhouse, Nashville
2024-25 Women's Basketball

Officials: Ify Seals, Troy Winders, Trey Miles

Period 1

Quarter Starters:

UKY	3 Amoore G	7 Key T	10 Lawrence D	13 Strack C	32 Hassett A
ASU	0 Basham K	3 Skinner T	7 Jackson J	23 Brown J	32 Parkinson N

Game Time	UKY	Score	Diff	ASU
10:00	7 KEY T jumpball lost			0 BASHAM K jumpball won
09:42		0-2	-2	23 BROWN J 2pt FG outside the paint, jump shot made (2)
09:24	10 LAWRENCE D 2pt FG outside the paint, jump shot missed			
09:21				3 SKINNER T defensive rebound (1)
09:02				3 SKINNER T 3pt FG , jump shot missed
09:00				offensive rebound (2)
08:47	7 KEY T steal (1)			3 SKINNER T turnover lost ball (1)
08:27	7 KEY T 3pt FG from turnover, jump shot missed			
08:27	offensive rebound (1)			
08:27				23 BROWN J substitution out
08:27				4 LOVETT J substitution in
08:25	13 STRACK C 2pt FG from turnover second chance outside the paint, jump shot made (2)	2-2	0	
08:25	3 AMOORE G assist (1)			
08:08				4 LOVETT J turnover dribbling violation (1)
07:58	3 AMOORE G 3pt FG from turnover, jump shot missed			
07:57	7 KEY T offensive rebound (1)			
07:57	7 KEY T foul drawn (1)			32 PARKINSON N foul personal (1 - 1)
07:55	13 STRACK C 2pt FG from turnover second chance outside the paint, jump shot missed			
07:52				32 PARKINSON N defensive rebound (1)
07:44				3 SKINNER T 2pt FG in the paint, layup missed
07:41				32 PARKINSON N offensive rebound (2)
07:41				32 PARKINSON N 2pt FG second chance in the paint, tip-in layup missed
07:37				0 BASHAM K offensive rebound (1)
07:37		2-4	-2	0 BASHAM K 2pt FG second chance in the paint, tip-in layup made (2)
07:25	13 STRACK C 2pt FG outside the paint, jump shot made (4)	4-4	0	
07:25	3 AMOORE G assist (2)			
06:51				7 JACKSON J 2pt FG in the paint, layup missed
06:48	7 KEY T defensive rebound (2)			
06:36	10 LAWRENCE D foul drawn (1)			4 LOVETT J foul personal (1 - 2)
06:36				4 LOVETT J substitution out
06:36				23 BROWN J substitution in
06:32	10 LAWRENCE D turnover lost ball (1)			7 JACKSON J steal (1)
06:20	10 LAWRENCE D foul shooting (1 - 1)			23 BROWN J foul drawn (1)
06:20				23 BROWN J free throw 1 - 2 missed
06:20				offensive dead ball rebound (1)
06:20		4-5	-1	23 BROWN J free throw 2 - 2 made (3)
06:20	10 LAWRENCE D substitution out			
06:20	5 ROWE C substitution in			
06:10	7 KEY T 2pt FG fast break in the paint, jump shot made (2)	6-5	1	
06:10	7 KEY T foul drawn (2)			0 BASHAM K foul shooting (1 - 3)



Arizona St. at Kentucky

11/26/24 Trojan Fieldhouse, Nashville
2024-25 Women's Basketball

Game Time: 3:30 PM
Game Duration: 1:54
Attendance: 611

Officials: Ify Seals, Troy Winders, Trey Miles

Game Time	UKY	Score	Diff	ASU
06:10	7 KEY T free throw fast break 1 - 1 made (3)	7-5	2	
05:56				23 BROWN J 2pt FG in the paint, layup missed
05:53	32 HASSETT A defensive rebound (1)			
05:49	3 AMOORE G 3pt FG , jump shot missed			
05:48				defensive rebound (6)
05:27				3 SKINNER T 2pt FG outside the paint, jump shot missed
05:26				offensive rebound (7)
05:21				23 BROWN J 2pt FG second chance in the paint, jump shot missed
05:19	13 STRACK C defensive rebound (1)			
05:01	32 HASSETT A 2pt FG in the paint, layup made (2)	9-5	4	
05:01	7 KEY T assist (1)			
04:40		9-8	1	7 JACKSON J 3pt FG , jump shot made (3)
04:40				3 SKINNER T assist (1)
04:16	3 AMOORE G 2pt FG outside the paint, jump shot missed			
04:14				0 BASHAM K defensive rebound (2)
04:06				3 SKINNER T turnover bad pass (2)
04:00	5 ROWE C 3pt FG from turnover, jump shot missed			
03:58	13 STRACK C offensive rebound (2)			
03:58	13 STRACK C foul drawn (1)			3 SKINNER T foul shooting (1 - 4)
03:58	13 STRACK C free throw 1 - 2 made (5)	10-8	2	
03:58	13 STRACK C free throw 2 - 2 missed			
03:58				7 JACKSON J defensive rebound (1)
03:58	7 KEY T substitution out			
03:58	17 SILVA C substitution in			
03:31		10-11	-1	23 BROWN J 3pt FG , jump shot made (6)
03:31				32 PARKINSON N assist (1)
03:06	32 HASSETT A 2pt FG in the paint, layup blocked			
03:06				23 BROWN J block (1)
03:06	offensive rebound (7)			
02:56	32 HASSETT A 3pt FG second chance, jump shot missed			
02:56				defensive rebound (10)
02:45		10-13	-3	32 PARKINSON N 2pt FG in the paint, jump shot made (2)
02:45				3 SKINNER T assist (2)
02:23	13 STRACK C 2pt FG in the paint, jump shot made (7)	12-13	-1	
02:01	13 STRACK C foul personal (1 - 2)			32 PARKINSON N foul drawn (1)
02:01	13 STRACK C substitution out			
02:01	7 KEY T substitution in			
02:01	32 HASSETT A substitution out			
02:01	10 LAWRENCE D substitution in			
02:01				0 BASHAM K substitution out
02:01				13 BESSELINK M substitution in
01:55				23 BROWN J turnover bad pass (1)
01:42	17 SILVA C 2pt FG from turnover outside the paint, jump shot missed			
01:37				23 BROWN J defensive rebound (1)
01:33				3 SKINNER T 2pt FG outside the paint, jump shot missed
01:33	defensive rebound (8)			
01:20	10 LAWRENCE D 3pt FG , jump shot made (3)	15-13	2	
01:20	7 KEY T assist (2)			



Official Basketball Play by Play - 1st Period

Arizona St. at Kentucky

11/26/24 Trojan Fieldhouse, Nashville
2024-25 Women's Basketball

Game Time: 3:30 PM

Game Duration: 1:54

Attendance: 611

Officials: Ify Seals, Troy Winders, Trey Miles

Game Time	UKY	Score	Diff	ASU
00:55				7 JACKSON J 2pt FG in the paint, layup missed
00:52	defensive rebound (9)			
00:33	3 AMOORE G turnover lost ball (1)			7 JACKSON J steal (2)
00:11	17 SILVA C foul shooting (1 - 3)			32 PARKINSON N foul drawn (2)
00:11		15-14	1	32 PARKINSON N free throw 1 - 2 made (3)
00:11				32 PARKINSON N free throw 2 - 2 missed
00:10	7 KEY T defensive rebound (3)			
00:05	10 LAWRENCE D 3pt FG , jump shot missed			
00:01	17 SILVA C offensive rebound (1)			
END OF PERIOD				
UKY 15-14 ASU				



Arizona St. at Kentucky

11/26/24 Trojan Fieldhouse, Nashville
2024-25 Women's Basketball

Game Time: 3:30 PM
Game Duration: 1:54
Attendance: 611

Officials: Ify Seals, Troy Winders, Trey Miles

Arizona St. - 14

NO.	Name	F/C	Min	FG	3P	FT	Rebounds			Fouls		TP	AS	TO	ST	Blocks		+/-
				M-A	M-A	M-A	OR	DR	TOT	PF	FD					BS	BA	
0	Kennedy Basham	F	07:59	1-1	0-0	0-0	1	1	2	1	0	2	0	0	0	0	0	1
32	Nevaeh Parkinson	C	10:00	1-2	0-0	1-2	1	1	2	1	2	3	1	0	0	0	0	-1
3	Tyi Skinner	G	10:00	0-4	0-1	0-0	0	1	1	1	0	0	2	2	0	0	0	-1
7	Jazion Jackson	G	10:00	1-3	1-1	0-0	0	1	1	0	0	3	0	0	2	0	0	-1
23	Jalyn Brown	G	08:09	2-4	1-1	1-2	0	1	1	0	1	6	0	1	0	1	0	1
4	Jyah LoVett		01:51	0-0	0-0	0-0	0	0	0	1	0	0	0	1	0	0	0	-2
13	Maggie Besselink		02:01	0-0	0-0	0-0	0	0	0	0	0	0	0	0	0	0	0	-2
Team							2	2	4			0		0				
Totals				5-14	2-3	2-4	4	7	11	4	3	14	3	4	2	1	0	-1

Shooting By Period		
1st FG%	5-14	35.7%
3PT%	2-3	66.7%
FT%	2-4	50%
GM FG%	5-14	35.7%
3PT%	2-3	66.7%
FT%	2-4	50.0%

Dead Ball Rebounds: 1, 0

Technical Fouls::NONE

Kentucky - 15

NO.	Name	F/C	Min	FG	3P	FT	Rebounds			Fouls		TP	AS	TO	ST	Blocks		+/-
				M-A	M-A	M-A	OR	DR	TOT	PF	FD					BS	BA	
7	Teonni Key	F	08:03	1-2	0-1	1-1	1	2	3	0	2	3	2	0	1	0	0	4
32	Amelia Hassett	F	07:59	1-3	0-1	0-0	0	1	1	0	0	2	0	0	0	0	1	-1
13	Clara Strack	C	07:59	3-4	0-0	1-2	1	1	2	1	1	7	0	0	0	0	0	-1
3	Georgia Amooore	G	10:00	0-3	0-2	0-0	0	0	0	0	0	0	2	1	0	0	0	1
10	Dazia Lawrence	G	05:41	1-3	1-2	0-0	0	0	0	1	1	3	0	1	0	0	0	1
5	Cassidy Rowe		06:20	0-1	0-1	0-0	0	0	0	0	0	0	0	0	0	0	0	2
17	Clara Silva		03:58	0-1	0-0	0-0	1	0	1	1	0	0	0	0	0	0	0	-1
Team							2	2	4			0		0				
Totals				6-17	1-7	2-3	5	6	11	3	4	15	4	2	1	0	1	1

Shooting By Period		
1st FG%	6-17	35.3%
3PT%	1-7	14.3%
FT%	2-3	66.7%
GM FG%	6-17	35.3%
3PT%	1-7	14.3%
FT%	2-3	66.7%

Dead Ball Rebounds: 0, 0

Technical Fouls::NONE

	ASU	UKY
Biggest lead	3 (1 st 2:45)	4 (1 st 5:01)
Best Scoring Run	5(1 st 2:45)	5(1 st 5:01)
Lead Changes	3	
Times Tied	2	
Time with Lead	03:50	03:59

Points from	ASU	UKY
Turnovers	2	3
Paint	4	6
Second Chance	2	3
Fast Breaks	0	3
Bench	0	0

	Period by Period Scoring				
	1st	2nd	3rd	4th	TOT
ASU	14	9	23	15	61
UKY	15	27	15	20	77



Arizona St. at Kentucky

11/26/24 Trojan Fieldhouse, Nashville
2024-25 Women's Basketball

Officials: Ify Seals, Troy Winders, Trey Miles

Period 2

Quarter Starters:

UKY	5 Rowe C	7 Key T	10 Lawrence D	13 Strack C	32 Hassett A
ASU	7 Jackson J	10 Fauntleroy K	13 Besselink M	23 Brown J	32 Parkinson N

Game Time	UKY	Score	Diff	ASU
10:00	3 AMOORE G substitution out			
10:00	17 SILVA C substitution out			
10:00	13 STRACK C substitution in			
10:00	32 HASSETT A substitution in			
10:00				3 SKINNER T substitution out
10:00				10 FAUNTLEROY K substitution in
09:50	7 KEY T foul drawn (3)			23 BROWN J foul shooting (1 - 1)
09:50	7 KEY T free throw 1 - 2 made (4)	16-14	2	
09:49	7 KEY T free throw 2 - 2 missed			
09:47	32 HASSETT A offensive rebound (2)			
09:44	10 LAWRENCE D 2pt FG second chance outside the paint, jump shot made (5)	18-14	4	
09:44	13 STRACK C assist (1)			
09:25				23 BROWN J 2pt FG in the paint, layup missed
09:22				7 JACKSON J offensive rebound (2)
09:22	jump ball situation			
09:19				23 BROWN J 2pt FG second chance in the paint, jump shot blocked
09:19	7 KEY T block (1)			
09:12	7 KEY T defensive rebound (4)			
08:58	32 HASSETT A foul drawn (1)			13 BESSELINK M foul shooting (1 - 2)
08:58				32 PARKINSON N substitution out
08:58				0 BASHAM K substitution in
08:58	32 HASSETT A free throw 1 - 2 made (3)	19-14	5	
08:58	32 HASSETT A free throw 2 - 2 made (4)	20-14	6	
08:58	7 KEY T foul personal (1 - 1)			0 BASHAM K foul drawn (1)
08:51				23 BROWN J 3pt FG , jump shot missed
08:48	13 STRACK C defensive rebound (3)			
08:32	7 KEY T 2pt FG in the paint, jump shot missed			
08:28				13 BESSELINK M defensive rebound (1)
08:25	5 ROWE C foul drawn (1)			10 FAUNTLEROY K foul offensive (1 - 3)
08:25				10 FAUNTLEROY K turnover offensive (1)
08:25	5 ROWE C substitution out			
08:25	4 BLUE L substitution in			
08:25	7 KEY T substitution out			
08:25	3 AMOORE G substitution in			
08:16	3 AMOORE G 2pt FG from turnover outside the paint, jump shot missed			
08:16				defensive rebound (14)
08:15				10 FAUNTLEROY K substitution out
08:15				3 SKINNER T substitution in
07:48				3 SKINNER T 2pt FG outside the paint, jump shot missed
07:45	13 STRACK C defensive rebound (4)			
07:26				Timeout media



Arizona St. at Kentucky

11/26/24 Trojan Fieldhouse, Nashville
2024-25 Women's Basketball

Game Time: 3:30 PM
Game Duration: 1:54
Attendance: 611

Officials: Ify Seals, Troy Winders, Trey Miles

Game Time	UKY	Score	Diff	ASU
07:26	3 AMOORE G turnover dribbling violation (2)			
07:26				7 JACKSON J substitution out
07:26				4 LOVETT J substitution in
07:06	jump ball situation			
07:06	3 AMOORE G steal (1)			0 BASHAM K turnover lost ball (1)
06:47	13 STRACK C 2pt FG from turnover in the paint, jump shot made (9)	22-14	8	
06:39				4 LOVETT J 2pt FG in the paint, layup missed
06:35	13 STRACK C defensive rebound (5)			
06:28	13 STRACK C 3pt FG , jump shot made (12)	25-14	11	
06:28	3 AMOORE G assist (3)			
06:08				0 BASHAM K 2pt FG in the paint, layup missed
06:03	32 HASSETT A defensive rebound (3)			
06:02	13 STRACK C 2pt FG fast break in the paint, layup made (14)	27-14	13	
06:02	3 AMOORE G assist (4)			
05:44	13 STRACK C foul shooting (2 - 2)			0 BASHAM K foul drawn (2)
05:44	13 STRACK C substitution out			
05:44	7 KEY T substitution in			
05:44				0 BASHAM K free throw 1 - 2 missed
05:44				offensive dead ball rebound (2)
05:44		27-15	12	0 BASHAM K free throw 2 - 2 made (3)
05:44				0 BASHAM K substitution out
05:44				32 PARKINSON N substitution in
05:44	7 KEY T foul drawn (4)			32 PARKINSON N foul personal (2 - 4)
05:32	7 KEY T turnover bad pass (1)			3 SKINNER T steal (1)
05:14	32 HASSETT A foul shooting (1 - 3)			23 BROWN J foul drawn (2)
05:14				23 BROWN J free throw 1 - 2 missed
05:14				offensive dead ball rebound (3)
05:14		27-16	11	23 BROWN J free throw 2 - 2 made (7)
05:09	7 KEY T foul drawn (5)			32 PARKINSON N foul shooting (3 - 5)
05:09				32 PARKINSON N substitution out
05:09				7 JACKSON J substitution in
05:09				7 JACKSON J substitution out
05:09				0 BASHAM K substitution in
05:09	7 KEY T free throw fast break 1 - 2 made (5)	28-16	12	
05:09	7 KEY T free throw fast break 2 - 2 made (6)	29-16	13	
05:02				3 SKINNER T 2pt FG outside the paint, jump shot missed
05:00	32 HASSETT A defensive rebound (4)			
04:57	32 HASSETT A 3pt FG , jump shot missed			
04:53				0 BASHAM K defensive rebound (3)
04:48				23 BROWN J 2pt FG in the paint, layup missed
04:45				23 BROWN J offensive rebound (2)
04:39	4 BLUE L foul drawn (1)			4 LOVETT J foul offensive (2 - 6)
04:39				4 LOVETT J turnover offensive (2)
04:25	7 KEY T turnover lost ball (2)			
04:25	4 BLUE L substitution out			
04:25	5 ROWE C substitution in			
04:25				4 LOVETT J substitution out
04:25				13 BESSELINK M substitution out



Arizona St. at Kentucky

11/26/24 Trojan Fieldhouse, Nashville
2024-25 Women's Basketball

Officials: Ify Seals, Troy Winders, Trey Miles

Game Time	UKY	Score	Diff	ASU
04:25				1 TOURE K substitution in
04:25				7 JACKSON J substitution in
04:10				3 SKINNER T 3pt FG from turnover, jump shot missed
04:08				7 JACKSON J offensive rebound (3)
04:03				23 BROWN J turnover travel (2)
03:50	3 AMOORE G 2pt FG from turnover outside the paint, jump shot made (2)	31-16	15	
03:24				0 BASHAM K 2pt FG in the paint, jump shot missed
03:22	10 LAWRENCE D defensive rebound (1)			
03:19	10 LAWRENCE D turnover lost ball (2)			7 JACKSON J steal (3)
03:16				23 BROWN J turnover bad pass (3)
03:00	7 KEY T 2pt FG from turnover outside the paint, jump shot made (8)	33-16	17	
03:00	3 AMOORE G assist (5)			
02:44		33-18	15	3 SKINNER T 2pt FG outside the paint, jump shot made (2)
02:31	7 KEY T 2pt FG in the paint, layup made (10)	35-18	17	
02:31	32 HASSETT A assist (1)			
02:13				1 TOURE K 2pt FG in the paint, layup blocked
02:13	7 KEY T block (2)			
02:09	7 KEY T defensive rebound (5)			
02:07	3 AMOORE G turnover travel (3)			
01:54	5 ROWE C foul drawn (2)			7 JACKSON J foul offensive (1 - 7)
01:54				7 JACKSON J turnover offensive (1)
01:37	5 ROWE C 3pt FG from turnover, jump shot missed			
01:31				0 BASHAM K defensive rebound (4)
01:27				3 SKINNER T 2pt FG in the paint, layup blocked
01:27	7 KEY T block (3)			
01:20				3 SKINNER T offensive rebound (2)
01:19				3 SKINNER T 3pt FG second chance, jump shot missed
01:16	32 HASSETT A defensive rebound (5)			
01:06	32 HASSETT A 3pt FG , jump shot made (7)	38-18	20	
01:06	7 KEY T assist (3)			
00:42		38-20	18	23 BROWN J 2pt FG in the paint, layup made (9)
00:33	3 AMOORE G 2pt FG in the paint, layup made (4)	40-20	20	
00:14		40-22	18	23 BROWN J 2pt FG in the paint, layup made (11)
00:14	10 LAWRENCE D foul shooting (2 - 4)			23 BROWN J foul drawn (3)
00:14	10 LAWRENCE D substitution out			
00:14	4 BLUE L substitution in			
00:14		40-23	17	23 BROWN J free throw 1 - 1 made (12)
00:01	3 AMOORE G 2pt FG outside the paint, jump shot made (6)	42-23	19	
END OF PERIOD				
UKY 42-23 ASU				



Arizona St. at Kentucky

11/26/24 Trojan Fieldhouse, Nashville
2024-25 Women's Basketball

Game Time: 3:30 PM
Game Duration: 1:54
Attendance: 611

Officials: Ify Seals, Troy Winders, Trey Miles

Arizona St. - 9

NO.	Name	F/C	Min	FG			Rebounds			Fouls		TP	AS	TO	ST	Blocks		+/-
				M-A	M-A	M-A	OR	DR	TOT	PF	FD					BS	BA	
0	Kennedy Basham	F	08:23	0-2	0-0	1-2	0	2	2	0	2	1	0	1	0	0	0	-16
32	Nevaeh Parkinson	C	01:37	0-0	0-0	0-0	0	0	0	2	0	0	0	0	0	0	0	-2
3	Tyi Skinner	G	08:15	1-6	0-2	0-0	1	0	1	0	0	2	0	0	1	0	1	-13
7	Jazion Jackson	G	06:59	0-0	0-0	0-0	2	0	2	1	0	0	0	1	1	0	0	-11
23	Jalyn Brown	G	10:00	2-6	0-1	2-3	1	0	1	1	2	6	0	2	0	0	1	-18
13	Maggie Besselink		05:35	0-0	0-0	0-0	0	1	1	1	0	0	0	0	0	0	0	-12
10	Kennedy Fauntleroy		01:45	0-0	0-0	0-0	0	0	0	1	0	0	0	1	0	0	0	-5
4	Jyah LoVett		03:01	0-1	0-0	0-0	0	0	0	1	0	0	0	1	0	0	0	-7
1	Kadidia Toure		04:25	0-1	0-0	0-0	0	0	0	0	0	0	0	0	0	0	1	-6
Team							0	1	1			0		0				
Totals				3-16	0-3	3-5	4	4	8	7	4	9	0	6	2	0	3	-18

Shooting By Period		
2nd FG%	3-16	18.8%
3PT%	0-3	0.0%
FT%	3-5	60%
GM FG%	3-16	18.8%
3PT%	0-3	0.0%
FT%	3-5	60.0%

Dead Ball Rebounds: 2, 0

Technical Fouls::NONE

Kentucky - 27

NO.	Name	F/C	Min	FG			Rebounds			Fouls		TP	AS	TO	ST	Blocks		+/-
				M-A	M-A	M-A	OR	DR	TOT	PF	FD					BS	BA	
7	Teonni Key	F	07:19	2-3	0-0	3-4	0	2	2	1	3	7	1	2	0	3	0	11
32	Amelia Hassett	F	10:00	1-2	1-2	2-2	1	3	4	1	1	5	1	0	0	0	0	18
13	Clara Strack	C	04:16	3-3	1-1	0-0	0	3	3	1	0	7	1	0	0	0	0	12
3	Georgia Amoore	G	08:25	3-4	0-0	0-0	0	0	0	0	0	6	3	2	1	0	0	13
10	Dazia Lawrence	G	09:46	1-1	0-0	0-0	0	1	1	1	0	2	0	1	0	0	0	17
17	Clara Silva		00:00	0-0	0-0	0-0	0	0	0	0	0	0	0	0	0	0	0	0
4	Lexi Blue		04:14	0-0	0-0	0-0	0	0	0	0	1	0	0	0	0	0	0	8
5	Cassidy Rowe		06:00	0-1	0-1	0-0	0	0	0	0	2	0	0	0	0	0	0	11
Team							0	0	0			0		0				
Totals				10-14	2-4	5-6	1	9	10	4	7	27	6	5	1	3	0	18

Shooting By Period		
2nd FG%	10-14	71.4%
3PT%	2-4	50.0%
FT%	5-6	83.3%
GM FG%	10-14	71.4%
3PT%	2-4	50.0%
FT%	5-6	83.3%

Dead Ball Rebounds: 0, 0

Technical Fouls::NONE

	ASU	UKY
Biggest lead	0 (1 st 10:00)	20 (2 nd 1:06)
Best Scoring Run	3(2 nd 0:14)	12(2 nd 6:02)
Lead Changes	0	
Times Tied	0	
Time with Lead	00:00	09:50

Points from	ASU	UKY
Turnovers	1	6
Paint	4	8
Second Chance	0	2
Fast Breaks	0	4
Bench	0	0

	Period by Period Scoring				
	1st	2nd	3rd	4th	TOT
ASU	14	9	23	15	61
UKY	15	27	15	20	77



Arizona St. at Kentucky

11/26/24 Trojan Fieldhouse, Nashville
2024-25 Women's Basketball

Officials: Ify Seals, Troy Winders, Trey Miles

Arizona St. - 23

NO.	Name	Min	FG			Rebounds			Fouls		TP	AS	TO	ST	Blocks		+/-
			M-A	3P	FT	OR	DR	TOT	PF	FD					BS	BA	
0	Kennedy Basham	F 16:22	1-3	0-0	1-2	1	3	4	1	2	3	0	1	0	0	0	-15
32	Nevaeh Parkinson	C 11:37	1-2	0-0	1-2	1	1	2	3	2	3	1	0	0	0	0	-3
3	Tyi Skinner	G 18:15	1-10	0-3	0-0	1	1	2	1	0	2	2	2	1	0	1	-14
7	Jazion Jackson	G 16:59	1-3	1-1	0-0	2	1	3	1	0	3	0	1	3	0	0	-12
23	Jalyn Brown	G 18:09	4-10	1-2	3-5	1	1	2	1	3	12	0	3	0	1	1	-17
4	Jyah LoVett	04:52	0-1	0-0	0-0	0	0	0	2	0	0	0	2	0	0	0	-9
13	Maggie Besselink	07:36	0-0	0-0	0-0	0	1	1	1	0	0	0	0	0	0	0	-14
10	Kennedy Fauntleroy	01:45	0-0	0-0	0-0	0	0	0	1	0	0	0	1	0	0	0	-5
1	Kadidia Toure	04:25	0-1	0-0	0-0	0	0	0	0	0	0	0	0	0	0	1	-6
Team						2	3	5			0		0				
Totals			8-30	2-6	5-9	8	11	19	11	7	23	3	10	4	1	3	-19

Shooting By Period		
1 st FG%	5-14	35.7%
3PT%	2-3	66.7%
FT%	2-4	50%
2 nd FG%	3-16	18.8%
3PT%	0-3	0.0%
FT%	3-5	60%
GM FG%	8-30	26.7%
3PT%	2-6	33.3%
FT%	5-9	55.6%

Dead Ball Rebounds: 3, 0

Technical Fouls::NONE

Kentucky - 42

NO.	Name	Min	FG			Rebounds			Fouls		TP	AS	TO	ST	Blocks		+/-
			M-A	3P	FT	OR	DR	TOT	PF	FD					BS	BA	
7	Teonni Key	F 15:22	3-5	0-1	4-5	1	4	5	1	5	10	3	2	1	3	0	15
32	Amelia Hassett	F 17:59	2-5	1-3	2-2	1	4	5	1	1	7	1	0	0	0	1	17
13	Clara Strack	C 12:15	6-7	1-1	1-2	1	4	5	2	1	14	1	0	0	0	0	11
3	Georgia Amooore	G 18:25	3-7	0-2	0-0	0	0	0	0	0	6	5	3	1	0	0	14
10	Dazia Lawrence	G 15:27	2-4	1-2	0-0	0	1	1	2	1	5	0	2	0	0	0	18
5	Cassidy Rowe	12:20	0-2	0-2	0-0	0	0	0	0	2	0	0	0	0	0	0	13
17	Clara Silva	03:58	0-1	0-0	0-0	1	0	1	1	0	0	0	0	0	0	0	-1
4	Lexi Blue	04:14	0-0	0-0	0-0	0	0	0	0	1	0	0	0	0	0	0	8
Team						2	2	4			0		0				
Totals			16-31	3-11	7-9	6	15	21	7	11	42	10	7	2	3	1	19

Shooting By Period		
1 st FG%	6-17	35.3%
3PT%	1-7	14.3%
FT%	2-3	66.7%
2 nd FG%	10-14	71.4%
3PT%	2-4	50.0%
FT%	5-6	83.3%
GM FG%	16-31	51.6%
3PT%	3-11	27.3%
FT%	7-9	77.8%

Dead Ball Rebounds: 0, 0

Technical Fouls::NONE

	ASU	UKY
Biggest lead	3 (1 st 2:45)	20 (2 nd 1:06)
Best Scoring Run	5 (1 st 2:45)	12 (2 nd 6:02)
Lead Changes	3	
Times Tied	2	
Time with Lead	03:50	13:59

Points from	ASU	UKY
Turnovers	3	9
Paint	8	14
Second Chance	2	5
Fast Breaks	0	7
Bench	0	0

	Period by Period Scoring				
	1st	2nd	3rd	4th	TOT
ASU	14	9	23	15	61
UKY	15	27	15	20	77



Arizona St. at Kentucky

11/26/24 Trojan Fieldhouse, Nashville
2024-25 Women's Basketball

Officials: Ify Seals, Troy Winders, Trey Miles

Period 3

Quarter Starters:

UKY	3 Amoore G	7 Key T	10 Lawrence D	13 Strack C	32 Hassett A
ASU	0 Basham K	7 Jackson J	13 Besselink M	23 Brown J	32 Parkinson N

Game Time	UKY	Score	Diff	ASU
10:00	4 BLUE L substitution out			
10:00	5 ROWE C substitution out			
10:00	10 LAWRENCE D substitution in			
10:00	13 STRACK C substitution in			
10:00				1 TOURE K substitution out
10:00				3 SKINNER T substitution out
10:00				13 BESSELINK M substitution in
10:00				32 PARKINSON N substitution in
09:45				23 BROWN J 3pt FG , jump shot missed
09:43	7 KEY T defensive rebound (6)			
09:39	32 HASSETT A 3pt FG , jump shot missed			
09:35	7 KEY T offensive rebound (7)			
09:30	32 HASSETT A 3pt FG second chance, jump shot missed			
09:26				23 BROWN J defensive rebound (3)
09:08				23 BROWN J 2pt FG in the paint, layup blocked
09:08	7 KEY T block (4)			
09:07				0 BASHAM K offensive rebound (5)
09:07	32 HASSETT A foul shooting (2 - 1)			0 BASHAM K foul drawn (3)
09:07				0 BASHAM K free throw 1 - 2 missed
09:07				offensive dead ball rebound (4)
09:07		42-24	18	0 BASHAM K free throw 2 - 2 made (4)
08:58	3 AMOORE G 3pt FG , jump shot missed			
08:56	7 KEY T offensive rebound (8)			
08:56	7 KEY T turnover lost ball (3)			
08:37				0 BASHAM K 2pt FG from turnover outside the paint, jump shot missed
08:35	defensive rebound (25)			
08:19	13 STRACK C 2pt FG outside the paint, jump shot missed			
08:17				32 PARKINSON N defensive rebound (3)
08:05				32 PARKINSON N 2pt FG in the paint, layup missed
08:02	13 STRACK C defensive rebound (6)			
07:53	32 HASSETT A foul drawn (2)			23 BROWN J foul shooting (2 - 1)
07:53				0 BASHAM K substitution out
07:53				3 SKINNER T substitution in
07:53	32 HASSETT A free throw 1 - 2 made (8)	43-24	19	
07:53	32 HASSETT A free throw 2 - 2 missed			
07:52				13 BESSELINK M defensive rebound (2)
07:39	32 HASSETT A foul personal (3 - 2)			23 BROWN J foul drawn (4)
07:39	32 HASSETT A substitution out			
07:39	5 ROWE C substitution in			
07:29				32 PARKINSON N 2pt FG in the paint, layup blocked
07:29	13 STRACK C block (1)			
07:24				13 BESSELINK M offensive rebound (3)



Arizona St. at Kentucky

11/26/24 Trojan Fieldhouse, Nashville
2024-25 Women's Basketball

Officials: Ify Seals, Troy Winders, Trey Miles

Game Time	UKY	Score	Diff	ASU
07:23		43-26	17	13 BESSELINK M 2pt FG second chance in the paint, layup made (2)
07:14	10 LAWRENCE D foul drawn (2)			23 BROWN J foul personal (3 - 2)
07:14				23 BROWN J substitution out
07:14				4 LOVETT J substitution in
07:14	turnover sec 5 (9)			
07:01				3 SKINNER T 2pt FG from turnover outside the paint, jump shot missed
06:55				13 BESSELINK M offensive rebound (4)
06:52	7 KEY T steal (2)			32 PARKINSON N turnover lost ball (1)
06:35	13 STRACK C 2pt FG from turnover outside the paint, jump shot missed			
06:31				7 JACKSON J defensive rebound (4)
06:15		43-28	15	32 PARKINSON N 2pt FG in the paint, jump shot made (5)
06:15				3 SKINNER T assist (3)
05:58	13 STRACK C foul drawn (2)			4 LOVETT J foul shooting (3 - 3)
05:58	13 STRACK C free throw 1 - 2 made (15)	44-28	16	
05:57	13 STRACK C free throw 2 - 2 missed			
05:55				13 BESSELINK M defensive rebound (5)
05:48				3 SKINNER T 2pt FG in the paint, layup missed
05:47				32 PARKINSON N offensive rebound (4)
05:47	5 ROWE C foul personal (1 - 3)			32 PARKINSON N foul drawn (3)
05:35	13 STRACK C foul personal (3 - 4)			32 PARKINSON N foul drawn (4)
05:35	13 STRACK C substitution out			
05:35	17 SILVA C substitution in			
05:33		44-30	14	32 PARKINSON N 2pt FG second chance in the paint, layup made (7)
05:33				3 SKINNER T assist (4)
05:20	3 AMOORE G 2pt FG in the paint, layup made (8)	46-30	16	
05:07		46-32	14	7 JACKSON J 2pt FG in the paint, jump shot made (5)
04:54	3 AMOORE G 2pt FG outside the paint, jump shot missed			
04:50				7 JACKSON J defensive rebound (5)
04:46	3 AMOORE G foul shooting (1 - 5)			7 JACKSON J foul drawn (1)
04:46	Timeout media			
04:46				3 SKINNER T substitution out
04:46				10 FAUNTLEROY K substitution in
04:46		46-33	13	7 JACKSON J free throw fast break 1 - 2 made (6)
04:44				7 JACKSON J free throw fast break 2 - 2 missed
04:43	7 KEY T defensive rebound (9)			
04:32	3 AMOORE G foul drawn (1)			7 JACKSON J foul personal (2 - 4)
04:20	3 AMOORE G 2pt FG in the paint, layup missed			
04:17				32 PARKINSON N defensive rebound (5)
03:59		46-35	11	4 LOVETT J 2pt FG outside the paint, jump shot made (2)
03:36	3 AMOORE G foul drawn (2)			13 BESSELINK M foul personal (2 - 5)
03:36				7 JACKSON J substitution out
03:36				3 SKINNER T substitution in
03:36	3 AMOORE G free throw 1 - 2 made (9)	47-35	12	
03:36	3 AMOORE G free throw 2 - 2 made (10)	48-35	13	
03:36				13 BESSELINK M substitution out
03:36				1 TOURE K substitution in



Arizona St. at Kentucky

11/26/24 Trojan Fieldhouse, Nashville
2024-25 Women's Basketball

Game Time: 3:30 PM
Game Duration: 1:54
Attendance: 611

Officials: Ify Seals, Troy Winders, Trey Miles

Game Time	UKY	Score	Diff	ASU
03:21				10 FAUNTLEROY K 2pt FG in the paint, layup blocked
03:21	7 KEY T block (5)			
03:17	17 SILVA C defensive rebound (2)			
03:13	10 LAWRENCE D 3pt FG , jump shot missed			
03:10				4 LOVETT J defensive rebound (1)
03:05	3 AMOORE G steal (2)			4 LOVETT J turnover lost ball (3)
02:54	3 AMOORE G 2pt FG from turnover outside the paint, jump shot missed			
02:51				10 FAUNTLEROY K defensive rebound (1)
02:48	5 ROWE C foul shooting (2 - 6)			10 FAUNTLEROY K foul drawn (1)
02:48		48-36	12	10 FAUNTLEROY K free throw fast break 1 - 2 made (1)
02:48		48-37	11	10 FAUNTLEROY K free throw fast break 2 - 2 made (2)
02:29	17 SILVA C 2pt FG outside the paint, jump shot made (2)	50-37	13	
02:29	3 AMOORE G assist (6)			
02:15				10 FAUNTLEROY K 2pt FG outside the paint, jump shot missed
02:12				4 LOVETT J offensive rebound (2)
02:10				3 SKINNER T 2pt FG second chance outside the paint, jump shot blocked
02:10	17 SILVA C block (1)			
02:05				32 PARKINSON N offensive rebound (6)
02:05				32 PARKINSON N 2pt FG second chance in the paint, tip-in layup missed
02:05				32 PARKINSON N offensive rebound (7)
02:05	7 KEY T foul shooting (2 - 7)			32 PARKINSON N foul drawn (5)
02:05		50-38	12	32 PARKINSON N free throw 1 - 2 made (8)
02:05		50-39	11	32 PARKINSON N free throw 2 - 2 made (9)
02:05				32 PARKINSON N substitution out
02:05				13 BESSELINK M substitution in
01:53	7 KEY T 2pt FG in the paint, layup made (12)	52-39	13	
01:53	3 AMOORE G assist (7)			
01:37				1 TOURE K 2pt FG outside the paint, jump shot missed
01:33	10 LAWRENCE D defensive rebound (2)			
01:14	17 SILVA C foul drawn (1)			13 BESSELINK M foul shooting (3 - 6)
01:14	17 SILVA C free throw 1 - 2 made (3)	53-39	14	
01:14	17 SILVA C free throw 2 - 2 made (4)	54-39	15	
01:06		54-42	12	4 LOVETT J 3pt FG , jump shot made (5)
00:47	10 LAWRENCE D 2pt FG outside the paint, jump shot missed			
00:44				1 TOURE K defensive rebound (1)
00:39	5 ROWE C foul shooting (3 - 8)			10 FAUNTLEROY K foul drawn (2)
00:39				3 SKINNER T substitution out
00:39				7 JACKSON J substitution in
00:39		54-43	11	10 FAUNTLEROY K free throw fast break 1 - 2 made (3)
00:39		54-44	10	10 FAUNTLEROY K free throw fast break 2 - 2 made (4)
00:27	3 AMOORE G 3pt FG , jump shot made (13)	57-44	13	
00:27	5 ROWE C assist (1)			
00:06		57-46	11	10 FAUNTLEROY K 2pt FG outside the paint, jump shot made (6)
END OF PERIOD				
UKY 57-46 ASU				



Arizona St. at Kentucky

11/26/24 Trojan Fieldhouse, Nashville
2024-25 Women's Basketball

Officials: Ify Seals, Troy Winders, Trey Miles

Arizona St. - 23

NO.	Name	F/C	Min	FG			Rebounds			Fouls		TP	AS	TO	ST	Blocks		+/-
				M-A	M-A	M-A	OR	DR	TOT	PF	FD					BS	BA	
0	Kennedy Basham	F	02:07	0-1	0-0	1-2	1	0	1	0	1	1	0	0	0	0	0	1
32	Nevaeh Parkinson	C	07:55	2-5	0-0	2-2	3	2	5	0	3	6	0	1	0	0	1	8
3	Tyi Skinner	G	06:04	0-3	0-0	0-0	0	0	0	0	0	0	2	0	0	0	1	3
7	Jazion Jackson	G	07:04	1-1	0-0	1-2	0	2	2	1	1	3	0	0	0	0	0	9
23	Jalyn Brown	G	02:46	0-2	0-1	0-0	0	1	1	2	1	0	0	0	0	0	1	2
13	Maggie Besselink		08:29	1-1	0-0	0-0	2	2	4	2	0	2	0	0	0	0	0	6
4	Jyah LoVett		07:14	2-2	1-1	0-0	1	1	2	1	0	5	0	1	0	0	0	6
10	Kennedy Fauntleroy		04:46	1-3	0-0	4-4	0	1	1	0	2	6	0	0	0	0	1	3
1	Kadidia Toure		03:36	0-1	0-0	0-0	0	1	1	0	0	0	0	0	0	0	0	2
Team							0	0	0			0						
Totals				7-19	1-2	8-10	7	10	17	6	8	23	2	2	0	0	4	8

Shooting By Period		
3rd FG%	7-19	36.8%
3PT%	1-2	50.0%
FT%	8-10	80%
GM FG%	7-19	36.8%
3PT%	1-2	50.0%
FT%	8-10	80.0%

Dead Ball Rebounds: 1, 0

Technical Fouls::NONE

Kentucky - 15

NO.	Name	F/C	Min	FG			Rebounds			Fouls		TP	AS	TO	ST	Blocks		+/-
				M-A	M-A	M-A	OR	DR	TOT	PF	FD					BS	BA	
7	Teonni Key	F	10:00	1-1	0-0	0-0	2	2	4	1	0	2	0	1	1	2	0	-8
32	Amelia Hassett	F	02:21	0-2	0-2	1-2	0	0	0	2	1	1	0	0	0	0	0	0
13	Clara Strack	C	04:25	0-2	0-0	1-2	0	1	1	1	1	1	0	0	0	1	0	-3
3	Georgia Amooore	G	10:00	2-6	1-2	2-2	0	0	0	1	2	7	2	0	1	0	0	-8
10	Dazia Lawrence	G	10:00	0-2	0-1	0-0	0	1	1	0	1	0	0	0	0	0	0	-8
4	Lexi Blue		00:00	0-0	0-0	0-0	0	0	0	0	0	0	0	0	0	0	0	
5	Cassidy Rowe		07:39	0-0	0-0	0-0	0	0	0	3	0	0	1	0	0	0	0	-8
17	Clara Silva		05:35	1-1	0-0	2-2	0	1	1	0	1	4	0	0	0	1	0	-5
Team							0	1	1			0		1				
Totals				4-14	1-5	6-8	2	6	8	8	6	15	3	2	2	4	0	-8

Shooting By Period		
3rd FG%	4-14	28.6%
3PT%	1-5	20.0%
FT%	6-8	75%
GM FG%	4-14	28.6%
3PT%	1-5	20.0%
FT%	6-8	75.0%

Dead Ball Rebounds: 0, 0

Technical Fouls::NONE

	ASU	UKY
Biggest lead	0 (1 st 10:00)	19 (3 rd 9:45)
Best Scoring Run	5(3 rd 3:59)	4(3 rd 1:14)
Lead Changes	0	
Times Tied	0	
Time with Lead	00:00	09:45

Points from	ASU	UKY
Turnovers	0	0
Paint	8	4
Second Chance	7	0
Fast Breaks	5	0
Bench	13	4

	Period by Period Scoring				
	1st	2nd	3rd	4th	TOT
ASU	14	9	23	15	61
UKY	15	27	15	20	77



Arizona St. at Kentucky

11/26/24 Trojan Fieldhouse, Nashville
2024-25 Women's Basketball

Officials: Ify Seals, Troy Winders, Trey Miles

Period 4

Quarter Starters:

UKY	3 Amoores G	5 Rowe C	7 Key T	13 Strack C	32 Hassett A
ASU	4 Lovett J	7 Jackson J	10 Fauntleroy K	13 Besselink M	32 Parkinson N

Game Time	UKY	Score	Diff	ASU
10:00	10 LAWRENCE D substitution out			
10:00	17 SILVA C substitution out			
10:00	13 STRACK C substitution in			
10:00	32 HASSETT A substitution in			
10:00				1 TOURE K substitution out
10:00				32 PARKINSON N substitution in
09:42	3 AMOORE G foul drawn (3)			13 BESSELINK M foul personal (4 - 1)
09:39	13 STRACK C 2pt FG outside the paint, jump shot missed			
09:36				7 JACKSON J defensive rebound (6)
09:11		57-48	9	7 JACKSON J 2pt FG outside the paint, jump shot made (8)
08:54	13 STRACK C 2pt FG in the paint, jump shot missed			
08:50	7 KEY T offensive rebound (10)			
08:49	32 HASSETT A 3pt FG second chance, jump shot missed			
08:44				4 LOVETT J defensive rebound (3)
08:32				13 BESSELINK M 3pt FG , jump shot missed
08:31	defensive rebound (31)			
08:17	5 ROWE C 3pt FG , jump shot missed			
08:15	7 KEY T offensive rebound (11)			
08:12	3 AMOORE G 3pt FG second chance, jump shot missed			
08:09	7 KEY T offensive rebound (12)			
08:07	13 STRACK C 2pt FG second chance in the paint, jump shot made (17)	59-48	11	
08:07	7 KEY T assist (4)			
07:48				32 PARKINSON N 2pt FG in the paint, jump shot blocked
07:48	7 KEY T block (6)			
07:43	32 HASSETT A defensive rebound (6)			
07:39	32 HASSETT A 3pt FG , jump shot missed			
07:37				defensive rebound (39)
07:37				13 BESSELINK M substitution out
07:37				1 TOURE K substitution in
07:22				32 PARKINSON N 2pt FG in the paint, layup blocked
07:22	13 STRACK C block (2)			
07:21				offensive rebound (40)
07:21				4 LOVETT J substitution out
07:21				3 SKINNER T substitution in
07:11				10 FAUNTLEROY K 3pt FG second chance, jump shot missed
07:07	32 HASSETT A defensive rebound (7)			
07:00	7 KEY T 2pt FG in the paint, layup missed			
06:57				10 FAUNTLEROY K defensive rebound (2)
06:50		59-51	8	3 SKINNER T 3pt FG , jump shot made (5)
06:50				10 FAUNTLEROY K assist (1)
06:49				Timeout 60 Sec
06:49				Timeout media



Arizona St. at Kentucky

11/26/24 Trojan Fieldhouse, Nashville
2024-25 Women's Basketball

Game Time: 3:30 PM
Game Duration: 1:54
Attendance: 611

Officials: Ify Seals, Troy Winders, Trey Miles

Game Time	UKY	Score	Diff	ASU
06:33	13 STRACK C 3pt FG , jump shot made (20)	62-51	11	
06:33	3 AMOORE G assist (8)			
06:16		62-53	9	32 PARKINSON N 2pt FG in the paint, layup made (11)
06:16				3 SKINNER T assist (5)
05:58	7 KEY T 2pt FG outside the paint, jump shot made (14)	64-53	11	
05:58	3 AMOORE G assist (9)			
05:42	3 AMOORE G steal (3)			1 TOURE K turnover bad pass (1)
05:39	3 AMOORE G 2pt FG fast break from turnover in the paint, layup made (15)	66-53	13	
05:14				10 FAUNTLEROY K 2pt FG outside the paint, jump shot missed
05:10	32 HASSETT A defensive rebound (8)			
04:52	13 STRACK C 2pt FG in the paint, jump shot missed			
04:48				32 PARKINSON N defensive rebound (8)
04:27	7 KEY T steal (3)			10 FAUNTLEROY K turnover lost ball (2)
04:20	13 STRACK C 2pt FG fast break from turnover in the paint, layup made (22)	68-53	15	
04:20	5 ROWE C assist (2)			
04:20	13 STRACK C foul drawn (3)			3 SKINNER T foul shooting (2 - 2)
04:20	Timeout media			
04:20				1 TOURE K substitution out
04:20				7 JACKSON J substitution out
04:20				13 BESSELINK M substitution in
04:20				23 BROWN J substitution in
04:20	13 STRACK C free throw fast break 1 - 1 missed			
04:18				23 BROWN J defensive rebound (4)
04:01				23 BROWN J 2pt FG in the paint, layup missed
04:00				offensive rebound (44)
03:52		68-56	12	3 SKINNER T 3pt FG second chance, jump shot made (8)
03:52				23 BROWN J assist (1)
03:32	13 STRACK C foul drawn (4)			32 PARKINSON N foul shooting (4 - 3)
03:32	13 STRACK C free throw 1 - 2 made (23)	69-56	13	
03:32	13 STRACK C free throw 2 - 2 made (24)	70-56	14	
03:18				23 BROWN J 2pt FG outside the paint, jump shot missed
03:14				13 BESSELINK M offensive rebound (6)
03:11				13 BESSELINK M 3pt FG second chance, jump shot missed
03:10				32 PARKINSON N offensive rebound (9)
03:10	7 KEY T foul shooting (3 - 1)			32 PARKINSON N foul drawn (6)
03:10				32 PARKINSON N free throw 1 - 2 missed
03:10				offensive dead ball rebound (5)
03:10		70-57	13	32 PARKINSON N free throw 2 - 2 made (12)
02:48	32 HASSETT A 2pt FG in the paint, layup missed			
02:45				13 BESSELINK M defensive rebound (7)
02:40				3 SKINNER T 2pt FG in the paint, layup blocked
02:40	13 STRACK C block (3)			
02:36	13 STRACK C defensive rebound (7)			
02:33	7 KEY T 2pt FG in the paint, layup missed			
02:31	13 STRACK C offensive rebound (8)			
02:31	13 STRACK C 2pt FG second chance in the paint, tip-in layup missed			
02:31	13 STRACK C offensive rebound (9)			



Arizona St. at Kentucky

11/26/24 Trojan Fieldhouse, Nashville
2024-25 Women's Basketball

Officials: Ify Seals, Troy Winders, Trey Miles

Game Time	UKY	Score	Diff	ASU
02:31	13 STRACK C foul drawn (5)			13 BESSELINK M foul personal (5 - 4)
02:31	3 AMOORE G turnover bad pass (4)			
02:28				13 BESSELINK M substitution out
02:28				1 TOURE K substitution in
02:17				3 SKINNER T 2pt FG from turnover in the paint, jump shot missed
02:15	defensive rebound (40)			
02:12	13 STRACK C 3pt FG , jump shot missed			
02:10	7 KEY T offensive rebound (13)			
02:05	3 AMOORE G 3pt FG second chance, jump shot made (18)	73-57	16	
02:05	13 STRACK C assist (2)			
02:00	Timeout 30 Sec			
01:47	7 KEY T foul shooting (4 - 2)			23 BROWN J foul drawn (5)
01:47				1 TOURE K substitution out
01:47				7 JACKSON J substitution in
01:47		73-58	15	23 BROWN J free throw 1 - 2 made (13)
01:47		73-59	14	23 BROWN J free throw 2 - 2 made (14)
01:22	3 AMOORE G turnover bad pass (5)			3 SKINNER T steal (2)
01:11				3 SKINNER T 3pt FG from turnover, jump shot missed
01:07	32 HASSETT A defensive rebound (9)			
00:45	3 AMOORE G foul drawn (4)			3 SKINNER T foul personal (3 - 5)
00:45	3 AMOORE G free throw 1 - 2 made (19)	74-59	15	
00:45	3 AMOORE G free throw 2 - 2 made (20)	75-59	16	
00:45	3 AMOORE G substitution out			
00:45	4 BLUE L substitution in			
00:39		75-61	14	23 BROWN J 2pt FG in the paint, layup made (16)
00:11	7 KEY T 2pt FG in the paint, layup made (16)	77-61	16	
00:11	32 HASSETT A assist (2)			
00:01				3 SKINNER T 3pt FG , jump shot missed
00:01	13 STRACK C defensive rebound (10)			
END OF GAME				
UKY 77-61 ASU				



Arizona St. at Kentucky

11/26/24 Trojan Fieldhouse, Nashville
2024-25 Women's Basketball

Game Time: 3:30 PM
Game Duration: 1:54
Attendance: 611

Officials: Ify Seals, Troy Winders, Trey Miles

Arizona St. - 15

NO.	Name	F/C	Min	FG			Rebounds			Fouls		TP	AS	TO	ST	Blocks		+/-
				M-A	M-A	M-A	OR	DR	TOT	PF	FD					BS	BA	
0	Kennedy Basham	F	00:00	0-0	0-0	0-0	0	0	0	0	0	0	0	0	0	0	0	0
32	Nevaeh Parkinson	C	10:00	1-3	0-0	1-2	1	1	2	1	1	3	0	0	0	0	2	-5
3	Tyi Skinner	G	07:21	2-6	2-4	0-0	0	0	0	2	0	6	1	0	1	0	1	-5
7	Jazion Jackson	G	07:27	1-1	0-0	0-0	0	1	1	0	0	2	0	0	0	0	0	-4
23	Jalyn Brown	G	04:20	1-3	0-0	2-2	0	1	1	0	1	4	1	0	0	0	0	-1
4	Jyah LoVett		02:39	0-0	0-0	0-0	0	1	1	0	0	0	0	0	0	0	0	0
10	Kennedy Fauntleroy		10:00	0-2	0-1	0-0	0	1	1	0	0	0	1	1	0	0	0	-5
1	Kadidia Toure		03:58	0-0	0-0	0-0	0	0	0	0	0	0	0	1	0	0	0	-7
13	Maggie Besselink		04:15	0-2	0-2	0-0	1	1	2	2	0	0	0	0	0	0	0	2
Team							2	1	3			0		0				
Totals				5-17	2-7	3-4	4	7	11	5	2	15	3	2	1	0	3	-5

Shooting By Period		
4 th FG%	5-17	29.4%
3PT%	2-7	28.6%
FT%	3-4	75%
GM FG%	5-17	29.4%
3PT%	2-7	28.6%
FT%	3-4	75.0%

Dead Ball Rebounds: 1, 0

Technical Fouls::NONE

Kentucky - 20

NO.	Name	F/C	Min	FG			Rebounds			Fouls		TP	AS	TO	ST	Blocks		+/-
				M-A	M-A	M-A	OR	DR	TOT	PF	FD					BS	BA	
7	Teonni Key	F	10:00	2-4	0-0	0-0	4	0	4	2	0	4	1	0	1	1	0	5
32	Amelia Hassett	F	10:00	0-3	0-2	0-0	0	4	4	0	0	0	1	0	0	0	0	5
13	Clara Strack	C	10:00	3-8	1-2	2-3	2	2	4	0	3	9	1	0	0	2	0	5
3	Georgia Amooore	G	09:14	2-3	1-2	2-2	0	0	0	0	2	7	2	2	1	0	0	5
10	Dazia Lawrence	G	00:00	0-0	0-0	0-0	0	0	0	0	0	0	0	0	0	0	0	0
5	Cassidy Rowe		10:00	0-1	0-1	0-0	0	0	0	0	0	0	1	0	0	0	0	5
17	Clara Silva		00:00	0-0	0-0	0-0	0	0	0	0	0	0	0	0	0	0	0	0
4	Lexi Blue		00:46	0-0	0-0	0-0	0	0	0	0	0	0	0	0	0	0	0	0
Team							0	2	2			0		0				
Totals				7-19	2-7	4-5	6	8	14	2	5	20	6	2	2	3	0	5

Shooting By Period		
4 th FG%	7-19	36.8%
3PT%	2-7	28.6%
FT%	4-5	80%
GM FG%	7-19	36.8%
3PT%	2-7	28.6%
FT%	4-5	80.0%

Dead Ball Rebounds: 0, 0

Technical Fouls::NONE

	ASU	UKY
Biggest lead	0 (1 st 10:00)	16 (4 th 2:05)
Best Scoring Run	3(4 th 6:50)	6(4 th 4:20)
Lead Changes	0	
Times Tied	0	
Time with Lead	00:00	09:39

Points from	ASU	UKY
Turnovers	0	4
Paint	4	8
Second Chance	4	5
Fast Breaks	0	4
Bench	0	0

Period by Period Scoring					
	1st	2nd	3rd	4th	TOT
ASU	14	9	23	15	61
UKY	15	27	15	20	77



Arizona St. at Kentucky

11/26/24 Trojan Fieldhouse, Nashville
2024-25 Women's Basketball

Officials: Ify Seals, Troy Winders, Trey Miles

Arizona St. - 38

NO.	Name	F/C	Min	FG			Rebounds			Fouls		TP	AS	TO	ST	Blocks		+/-
				M-A	M-A	M-A	OR	DR	TOT	PF	FD					BS	BA	
0	Kennedy Basham	F	02:07	0-1	0-0	1-2	1	0	1	0	1	1	0	0	0	0	0	1
32	Nevaeh Parkinson	C	17:55	3-8	0-0	3-4	4	3	7	1	4	9	0	1	0	0	3	3
3	Tyi Skinner	G	13:25	2-9	2-4	0-0	0	0	0	2	0	6	3	0	1	0	2	-2
7	Jazion Jackson	G	14:31	2-2	0-0	1-2	0	3	3	1	1	5	0	0	0	0	0	5
23	Jalyn Brown	G	07:06	1-5	0-1	2-2	0	2	2	2	2	4	1	0	0	0	1	1
13	Maggie Besselink		12:44	1-3	0-2	0-0	3	3	6	4	0	2	0	0	0	0	0	8
4	Jyah LoVett		09:53	2-2	1-1	0-0	1	2	3	1	0	5	0	1	0	0	0	6
10	Kennedy Fauntleroy		14:46	1-5	0-1	4-4	0	2	2	0	2	6	1	1	0	0	1	-2
1	Kadidia Toure		07:34	0-1	0-0	0-0	0	1	1	0	0	0	0	1	0	0	0	-5
Team							2	1	3			0		0				
Totals				12-36	3-9	11-14	11	17	28	11	10	38	5	4	1	0	7	3

Shooting By Period		
3 rd FG%	7-19	36.8%
3PT%	1-2	50.0%
FT%	8-10	80%
4 th FG%	5-17	29.4%
3PT%	2-7	28.6%
FT%	3-4	75%
GM FG%	12-36	33.3%
3PT%	3-9	33.3%
FT%	11-14	78.6%

Dead Ball Rebounds: 2, 0

Technical Fouls::NONE

Kentucky - 35

NO.	Name	F/C	Min	FG			Rebounds			Fouls		TP	AS	TO	ST	Blocks		+/-
				M-A	M-A	M-A	OR	DR	TOT	PF	FD					BS	BA	
7	Teonni Key	F	20:00	3-5	0-0	0-0	6	2	8	3	0	6	1	1	2	3	0	-3
32	Amelia Hassett	F	12:21	0-5	0-4	1-2	0	4	4	2	1	1	1	0	0	0	0	5
13	Clara Strack	C	14:25	3-10	1-2	3-5	2	3	5	1	4	10	1	0	0	3	0	2
3	Georgia Amooore	G	19:14	4-9	2-4	4-4	0	0	0	1	4	14	4	2	2	0	0	-3
10	Dazia Lawrence	G	10:00	0-2	0-1	0-0	0	1	1	0	1	0	0	0	0	0	0	-8
5	Cassidy Rowe		17:39	0-1	0-1	0-0	0	0	0	3	0	0	2	0	0	0	0	-3
17	Clara Silva		05:35	1-1	0-0	2-2	0	1	1	0	1	4	0	0	0	1	0	-5
4	Lexi Blue		00:46	0-0	0-0	0-0	0	0	0	0	0	0	0	0	0	0	0	
Team							0	3	3			0		1				
Totals				11-33	3-12	10-13	8	14	22	10	11	35	9	4	4	7	0	-3

Shooting By Period		
3 rd FG%	4-14	28.6%
3PT%	1-5	20.0%
FT%	6-8	75%
4 th FG%	7-19	36.8%
3PT%	2-7	28.6%
FT%	4-5	80%
GM FG%	11-33	33.3%
3PT%	3-12	25.0%
FT%	10-13	76.9%

Dead Ball Rebounds: 0, 0

Technical Fouls::NONE

	ASU	UKY
Biggest lead	0 (1 st 10:00)	19 (3 rd 9:45)
Best Scoring Run	5(3 rd 3:59)	6(4 th 4:20)
Lead Changes	0	
Times Tied	0	
Time with Lead	00:00	19:45

Points from	ASU	UKY
Turnovers	0	4
Paint	12	12
Second Chance	11	5
Fast Breaks	5	4
Bench	13	4

	Period by Period Scoring				
	1st	2nd	3rd	4th	TOT
ASU	14	9	23	15	61
UKY	15	27	15	20	77



Arizona St. at Kentucky

11/26/24 Trojan Fieldhouse, Nashville
2024-25 Women's Basketball

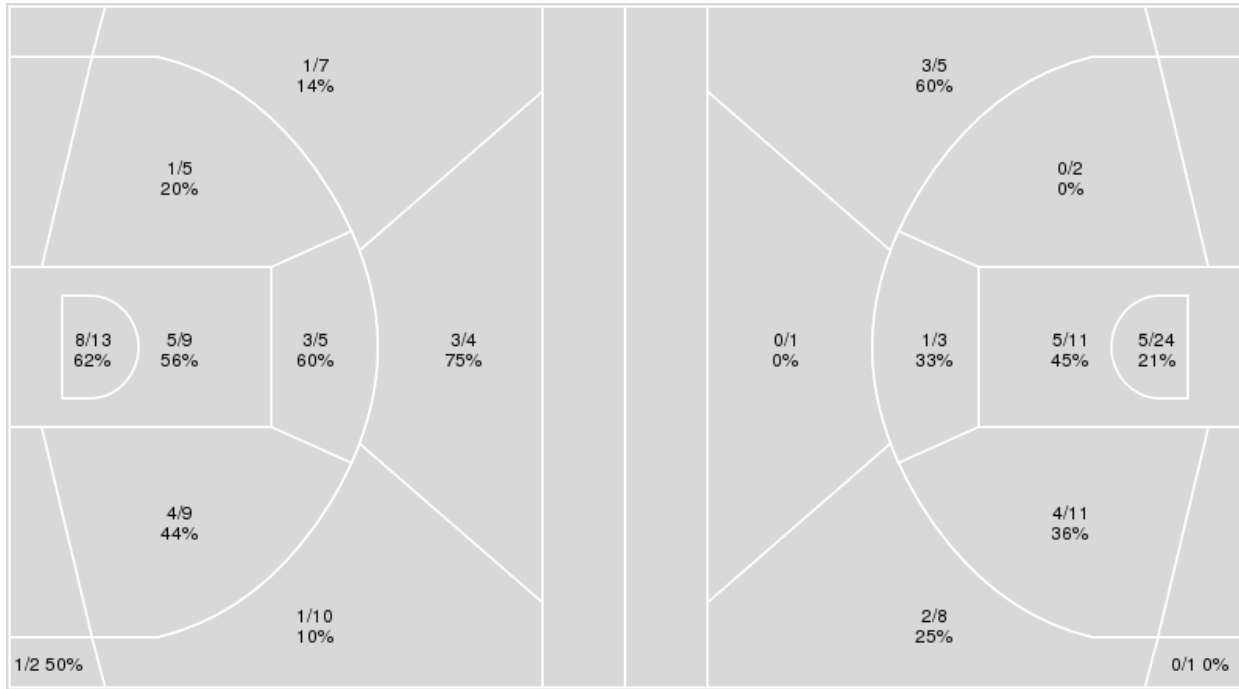
Officials: Ify Seals, Troy Winders, Trey Miles

{ Players => All; } FG Types => All; Results => All;

{ Players => 0, 1, 3, 4, 7, 10, 12, 13, 15, 21, 22, 23, 24, 25, 30, 32; } FG
Types => All; Results => All;

Kentucky

Arizona St.



Kentucky	M/A	%
Field Goals	27/64	42
2 Points	21/41	51
3 Points	6/23	26
Free Throws	17/22	77

Arizona St.	M/A	%
Field Goals	20/66	30
2 Points	15/51	29
3 Points	5/15	33
Free Throws	16/23	70



Arizona St. at Kentucky

11/26/24 Trojan Fieldhouse, Nashville
2024-25 Women's Basketball

Officials: Ify Seals, Troy Winders, Trey Miles

Arizona St.

No	Name	Mins		Score		Points Diff		Points per Min		Assists		Rebounds		Steals		Turnovers	
		On	Off	On	Off	On	Off	On	Off	On	Off	On	Off	On	Off	On	Off
0	Kennedy Basham	18:29	21:31	22 - 36	39 - 41	-14	-2	1.19	1.81	3	5	20	27	2	3	9	5
1	Kadidia Toure	11:59	28:01	23 - 34	38 - 43	-11	-5	1.92	1.36	2	6	12	35	1	4	6	8
3	Tyi Skinner	31:40	08:21	51 - 67	10 - 10	-16	0	1.61	1.20	8	0	36	11	5	0	13	1
4	Jyah LoVett	14:45	25:15	26 - 29	35 - 48	-3	-13	1.76	1.39	2	6	21	26	1	4	5	9
7	Jazion Jackson	31:30	08:31	48 - 55	13 - 22	-7	-9	1.52	1.53	7	1	34	13	4	1	11	3
10	Kennedy Fauntleroy	16:31	23:29	29 - 36	32 - 41	-7	-9	1.76	1.36	3	5	21	26	1	4	4	10
13	Maggie Besselink	20:20	19:40	28 - 34	33 - 43	-6	-10	1.38	1.68	3	5	26	21	2	3	5	9
23	Jalyn Brown	25:15	14:45	32 - 48	29 - 29	-16	0	1.27	1.97	4	4	26	21	5	0	9	5
32	Nevaeh Parkinson	29:32	10:28	46 - 46	15 - 31	0	-16	1.56	1.43	8	0	39	8	4	1	8	6

Kentucky

No	Name	Mins		Score		Points Diff		Points per Min		Assists		Rebounds		Steals		Turnovers	
		On	Off	On	Off	On	Off	On	Off	On	Off	On	Off	On	Off	On	Off
3	Georgia Amoore	37:39	02:21	70 - 59	7 - 2	11	5	1.86	2.99	17	2	39	4	6	0	11	0
4	Lexi Blue	04:60	35:00	13 - 5	64 - 56	8	8	2.60	1.83	3	16	5	38	1	5	3	8
5	Cassidy Rowe	29:59	10:01	63 - 53	14 - 8	10	6	2.10	1.40	15	4	31	12	4	2	6	5
7	Teonni Key	35:22	04:38	68 - 56	9 - 5	12	4	1.92	1.94	17	2	39	4	5	1	10	1
10	Dazia Lawrence	25:27	14:33	47 - 37	30 - 24	10	6	1.85	2.06	12	7	25	18	4	2	9	2
13	Clara Strack	26:40	13:20	46 - 33	31 - 28	13	3	1.72	2.32	12	7	32	11	5	1	6	5
17	Clara Silva	09:33	30:27	18 - 24	59 - 37	-6	22	1.88	1.94	4	15	8	35	1	5	1	10
32	Amelia Hassett	30:20	09:40	60 - 38	17 - 23	22	-6	1.98	1.76	15	4	36	7	4	2	9	2

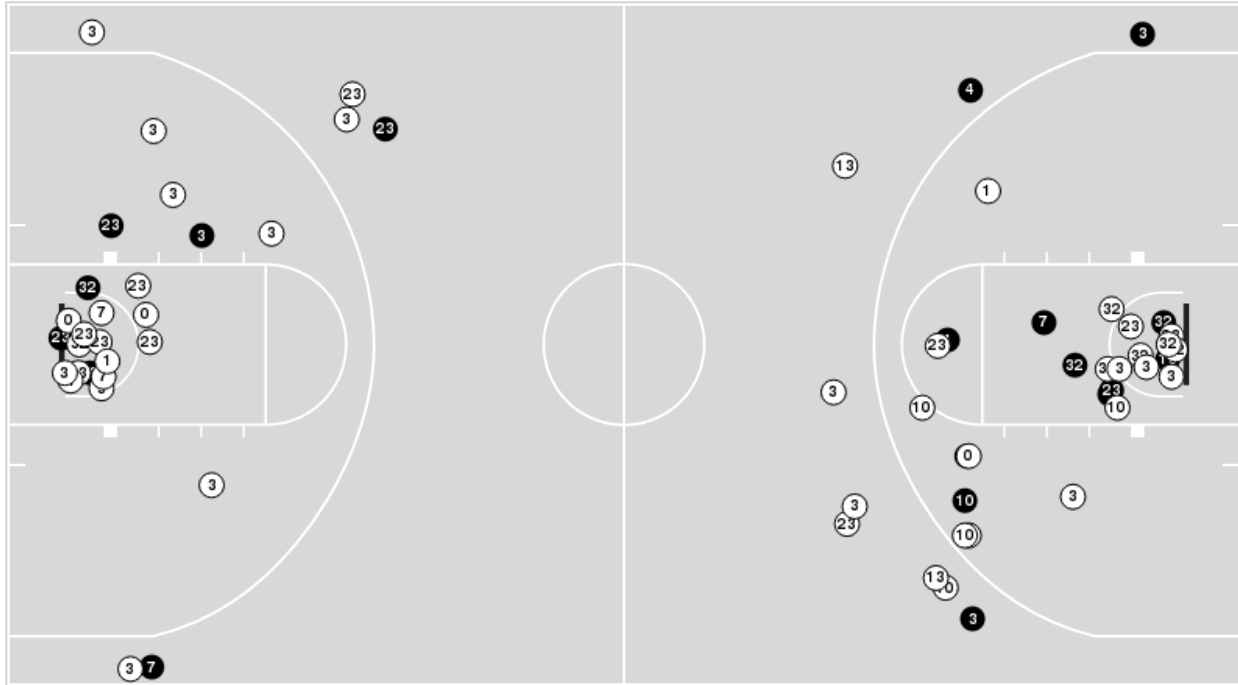


Officials: Ify Seals, Troy Winders, Trey Miles

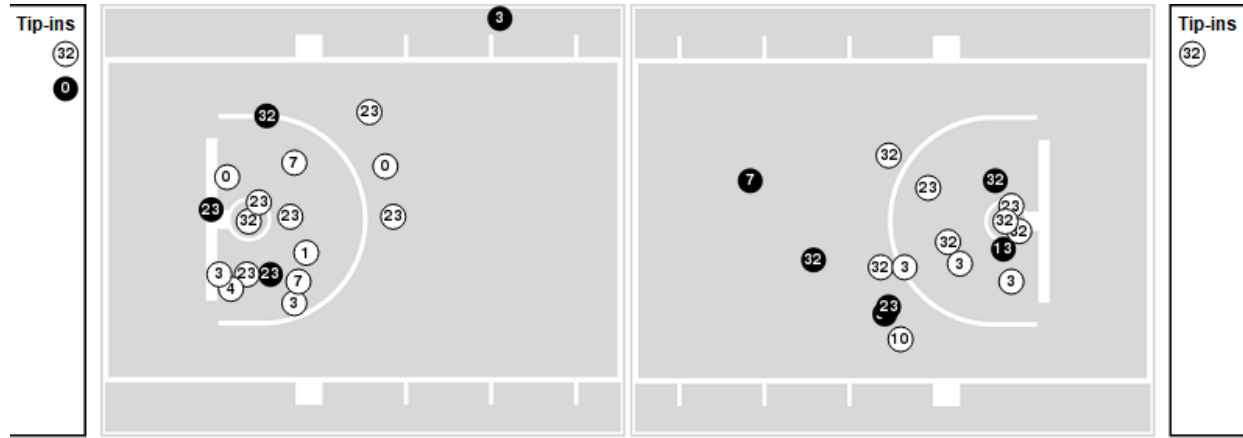
Players => 0, 1, 3, 4, 7, 10, 12, 13, 15, 21, 22, 23, 24, 25, 30, 32FG Types=>AllResults=>All

Arizona St.

All Field Goals



Blow Up Chart



● Made ○ Missed N - Player Number

Arizona St.	M/A	%
Field Goals	20/66	30
2 Points	15/51	29
3 Points	5/15	33
Free Throws	16/23	70

Arizona St.	M/A	%
Points in the Paint	20 (10 / 35)	29
Fast Break Points	5 (5/6)	83
Second Chance Points	13 (8/18)	44
Effective FG%	34	

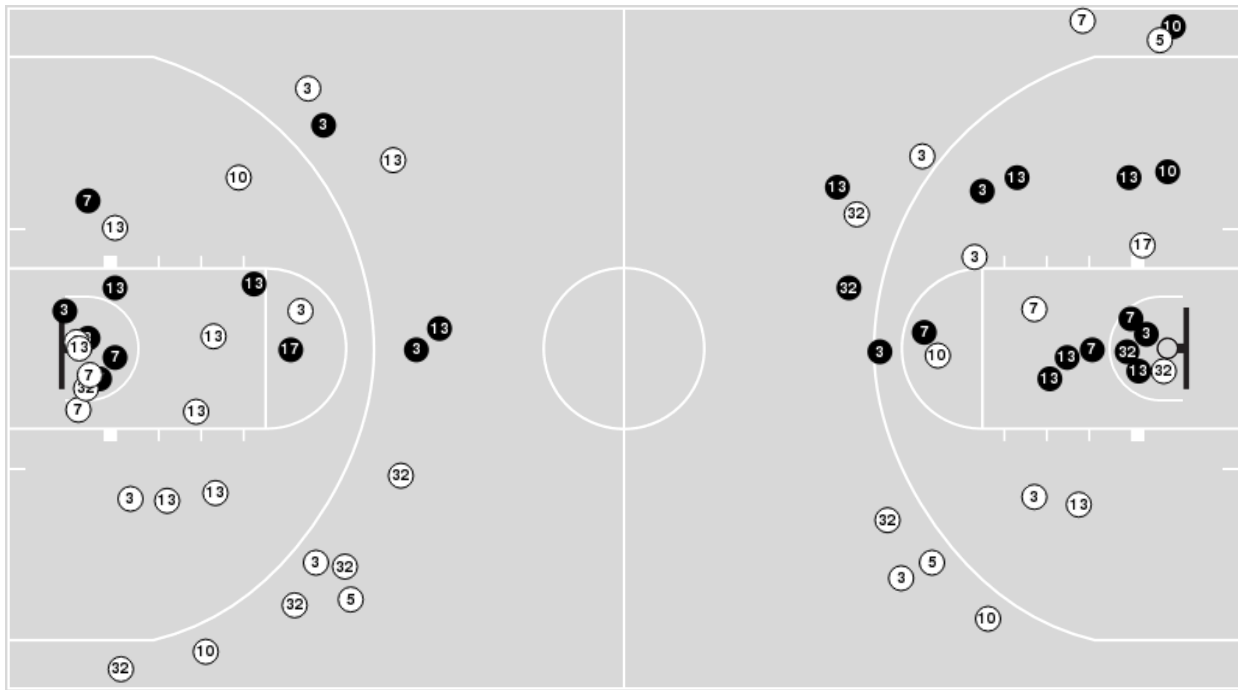


Officials: Ify Seals, Troy Winders, Trey Miles

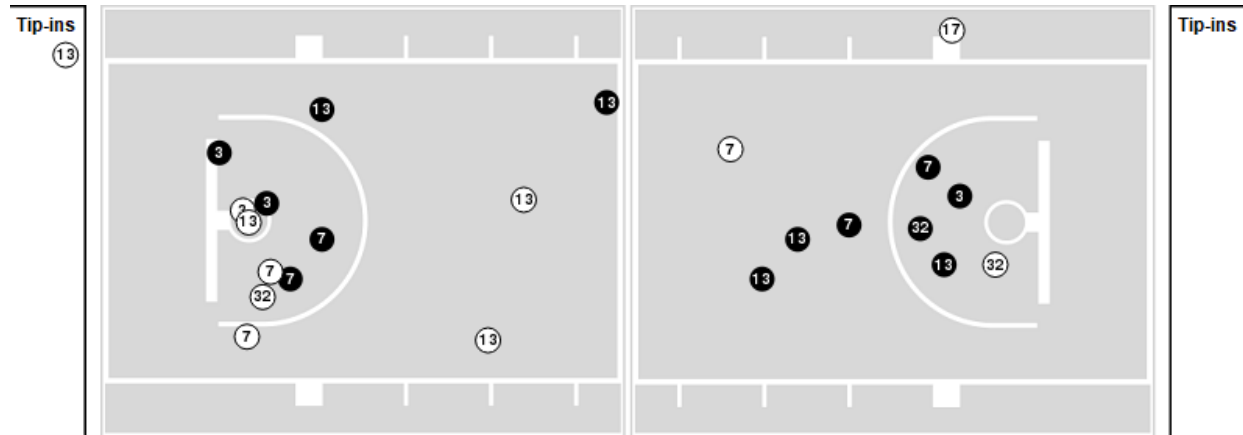
Players => AllFG Types=>AllResults=>All

Kentucky

All Field Goals



Blow Up Chart



● Made ○ Missed N - Player Number

Kentucky	M/A	%
Field Goals	27/64	42
2 Points	21/41	51
3 Points	6/23	26
Free Throws	17/22	77

Kentucky	M/A	%
Points in the Paint	26 (13 / 22)	59
Fast Break Points	11 (7/8)	88
Second Chance Points	10 (5/12)	42
Effective FG%	47	



Arizona St. at Kentucky

11/26/24 Trojan Fieldhouse, Nashville
2024-25 Women's Basketball

Officials: Ify Seals, Troy Winders, Trey Miles

Arizona St.

Lineup	Quarter On	Time On	Quarter Off	Time Off	Time on Court	Score	Score Diff	Reb	Stl	Tov	Ass	PPP
0- Basham K/ 3- Skinner T/ 7- Jackson J/ 23- Brown J/ 32- Parkinson N/	1	10:00	1	08:27	01:33	2-0	2	2	0	1	0	1.0000
0- Basham K/ 3- Skinner T/ 4- LoVett J/ 7- Jackson J/ 32- Parkinson N/	1	08:27	1	06:36	01:51	2-4	-2	3	0	1	0	0.6667
0- Basham K/ 3- Skinner T/ 7- Jackson J/ 23- Brown J/ 32- Parkinson N/	1	06:36	1	02:01	04:35	9-8	1	5	1	1	3	1.3081
3- Skinner T/ 7- Jackson J/ 13- Besselink M/ 23- Brown J/ 32- Parkinson N/	1	02:01	2	10:00	02:01	1-3	-2	1	1	1	0	0.2577
7- Jackson J/ 10- Fauntleroy K/ 13- Besselink M/ 23- Brown J/ 32- Parkinson N/	2	10:00	2	08:58	01:02	0-3	-3	1	0	0	0	0.0000
0- Basham K/ 7- Jackson J/ 10- Fauntleroy K/ 13- Besselink M/ 23- Brown J/	2	08:58	2	08:15	00:43	0-2	-2	2	0	1	0	0.0000
0- Basham K/ 3- Skinner T/ 7- Jackson J/ 13- Besselink M/ 23- Brown J/	2	08:15	2	07:26	00:49	0-0	0	0	0	0	0	0.0000
0- Basham K/ 3- Skinner T/ 4- LoVett J/ 13- Besselink M/ 23- Brown J/	2	07:26	2	05:44	01:42	1-7	-6	0	0	1	0	0.2577
3- Skinner T/ 4- LoVett J/ 13- Besselink M/ 23- Brown J/ 32- Parkinson N/	2	05:44	2	05:09	00:35	1-0	1	0	1	0	0	1.1364
3- Skinner T/ 4- LoVett J/ 7- Jackson J/ 13- Besselink M/ 23- Brown J/	2	05:09	2	05:09	00:00	0-0	0	0	0	0	0	0.0000
0- Basham K/ 3- Skinner T/ 4- LoVett J/ 13- Besselink M/ 23- Brown J/	2	05:09	2	04:25	00:44	0-2	-2	2	0	1	0	0.0000
0- Basham K/ 1- Toure K/ 3- Skinner T/ 7- Jackson J/ 23- Brown J/	2	04:25	3	10:00	04:25	7-13	-6	3	1	3	0	0.7415
0- Basham K/ 7- Jackson J/ 13- Besselink M/ 23- Brown J/ 32- Parkinson N/	3	10:00	3	07:53	02:07	1-0	1	3	0	0	0	0.2577
3- Skinner T/ 7- Jackson J/ 13- Besselink M/ 23- Brown J/ 32- Parkinson N/	3	07:53	3	07:14	00:39	2-1	1	2	0	0	0	2.0000
3- Skinner T/ 4- LoVett J/ 7- Jackson J/ 13- Besselink M/ 32- Parkinson N/	3	07:14	3	04:46	02:28	6-3	3	5	0	1	2	1.5000
4- LoVett J/ 7- Jackson J/ 10- Fauntleroy K/ 13- Besselink M/ 32- Parkinson N/	3	04:46	3	03:36	01:10	3-0	3	1	0	0	0	1.5957
3- Skinner T/ 4- LoVett J/ 10- Fauntleroy K/ 13- Besselink M/ 32- Parkinson N/	3	03:36	3	03:36	00:00	0-2	-2	0	0	0	0	0.0000
1- Toure K/ 3- Skinner T/ 4- LoVett J/ 10- Fauntleroy K/ 32- Parkinson N/	3	03:36	3	02:05	01:31	4-2	2	5	0	1	0	1.0638
1- Toure K/ 3- Skinner T/ 4- LoVett J/ 10- Fauntleroy K/ 13- Besselink M/	3	02:05	3	00:39	01:25	3-4	-1	1	0	0	0	1.5000
1- Toure K/ 4- LoVett J/ 7- Jackson J/ 10- Fauntleroy K/ 13- Besselink M/	3	00:39	4	10:00	00:39	4-3	1	0	0	0	0	2.1277
4- LoVett J/ 7- Jackson J/ 10- Fauntleroy K/ 13- Besselink M/ 32- Parkinson N/	4	10:00	4	07:37	02:23	2-2	0	3	0	0	0	0.6667
1- Toure K/ 4- LoVett J/ 7- Jackson J/ 10- Fauntleroy K/ 32- Parkinson N/	4	07:37	4	07:21	00:16	0-0	0	1	0	0	0	0.0000
1- Toure K/ 3- Skinner T/ 7- Jackson J/ 10- Fauntleroy K/ 32- Parkinson N/	4	07:21	4	04:20	03:01	5-9	-4	2	0	2	2	0.8333
3- Skinner T/ 10- Fauntleroy K/ 13- Besselink M/ 23- Brown J/ 32- Parkinson N/	4	04:20	4	02:28	01:52	4-2	2	5	0	0	1	1.3889
1- Toure K/ 3- Skinner T/ 10- Fauntleroy K/ 23- Brown J/ 32- Parkinson N/	4	02:28	4	01:47	00:41	0-3	-3	0	0	0	0	0.0000
3- Skinner T/ 7- Jackson J/ 10- Fauntleroy K/ 23- Brown J/ 32- Parkinson N/	4	01:47	4	00:00	01:47	4-4	0	0	1	0	0	1.0309



Arizona St. at Kentucky

11/26/24 Trojan Fieldhouse, Nashville
2024-25 Women's Basketball

Officials: Ify Seals, Troy Winders, Trey Miles

Kentucky

Lineup	Quarter On	Time On	Quarter Off	Time Off	Time on Court	Score	Score Diff	Reb	Stl	Tov	Ass	PPP
3- Amoores G/ 7- Key T/ 10- Lawrence D/ 13- Strack C/ 32- Hassett A/	1	10:00	1	06:20	03:40	4-5	-1	3	1	1	2	0.8000
3- Amoores G/ 5- Rowe C/ 7- Key T/ 13- Strack C/ 32- Hassett A/	1	06:20	1	03:58	02:22	6-3	3	3	0	0	1	1.1278
3- Amoores G/ 5- Rowe C/ 13- Strack C/ 17- Silva C/ 32- Hassett A/	1	03:58	1	02:01	01:57	2-5	-3	1	0	0	0	1.0000
3- Amoores G/ 5- Rowe C/ 7- Key T/ 17- Silva C/ 32- Hassett A/	1	02:01	1	02:01	00:00	0-0	0	0	0	0	0	0.0000
3- Amoores G/ 5- Rowe C/ 7- Key T/ 10- Lawrence D/ 17- Silva C/	1	02:01	2	10:00	02:01	3-1	2	4	0	1	1	1.0000
5- Rowe C/ 7- Key T/ 10- Lawrence D/ 13- Strack C/ 32- Hassett A/	2	10:00	2	08:25	01:35	5-0	5	3	0	0	1	1.8116
4- Blue L/ 7- Key T/ 10- Lawrence D/ 13- Strack C/ 32- Hassett A/	2	08:25	2	08:25	00:00	0-0	0	0	0	0	0	0.0000
3- Amoores G/ 4- Blue L/ 10- Lawrence D/ 13- Strack C/ 32- Hassett A/	2	08:25	2	05:44	02:41	7-0	7	3	1	1	2	1.4000
3- Amoores G/ 4- Blue L/ 7- Key T/ 10- Lawrence D/ 32- Hassett A/	2	05:44	2	04:25	01:19	2-2	0	1	0	2	0	0.5155
3- Amoores G/ 5- Rowe C/ 7- Key T/ 10- Lawrence D/ 32- Hassett A/	2	04:25	2	00:14	04:10	11-6	5	3	0	2	3	1.3750
3- Amoores G/ 4- Blue L/ 5- Rowe C/ 7- Key T/ 32- Hassett A/	2	00:14	3	10:00	00:14	2-1	1	0	0	0	0	2.0000
3- Amoores G/ 7- Key T/ 10- Lawrence D/ 13- Strack C/ 32- Hassett A/	3	10:00	3	07:39	02:21	1-1	0	5	0	1	0	0.2577
3- Amoores G/ 5- Rowe C/ 7- Key T/ 10- Lawrence D/ 13- Strack C/	3	07:39	3	05:35	02:04	1-4	-3	0	1	1	0	0.3472
3- Amoores G/ 5- Rowe C/ 7- Key T/ 10- Lawrence D/ 17- Silva C/	3	05:35	4	10:00	05:35	13-18	-5	3	1	0	3	1.2082
3- Amoores G/ 5- Rowe C/ 7- Key T/ 13- Strack C/ 32- Hassett A/	4	10:00	4	00:45	09:14	18-13	5	13	2	2	5	1.1111
4- Blue L/ 5- Rowe C/ 7- Key T/ 13- Strack C/ 32- Hassett A/	4	00:45	4	00:00	00:45	2-2	0	1	0	0	1	2.0000



Arizona St. at Kentucky

11/26/24 Trojan Fieldhouse, Nashville
2024-25 Women's Basketball

Officials: Ify Seals, Troy Winders, Trey Miles

Arizona St.

Lineup	Time	Score	Score Diff	Pts/Min	Reb	Stl	Tov	Ass	PPP
0- Basham K/ 3- Skinner T/ 7- Jackson J/ 23- Brown J/ 32- Parkinson N/	06:08	11-8	3	1.7935	7	1	2	3	1.2387
0- Basham K/ 1- Toure K/ 3- Skinner T/ 7- Jackson J/ 23- Brown J/	04:25	7-13	-6	1.5849	3	1	3	0	0.7415
4- LoVett J/ 7- Jackson J/ 10- Fauntleroy K/ 13- Besselink M/ 32- Parkinson N/	03:33	5-2	3	1.4085	4	0	0	0	1.0246
1- Toure K/ 3- Skinner T/ 7- Jackson J/ 10- Fauntleroy K/ 32- Parkinson N/	03:01	5-9	-4	1.6575	2	0	2	2	0.8333
3- Skinner T/ 7- Jackson J/ 13- Besselink M/ 23- Brown J/ 32- Parkinson N/	02:40	3-4	-1	1.1250	3	1	1	0	0.6148
3- Skinner T/ 4- LoVett J/ 7- Jackson J/ 13- Besselink M/ 32- Parkinson N/	02:28	6-3	3	2.4324	5	0	1	2	1.5000
0- Basham K/ 3- Skinner T/ 4- LoVett J/ 13- Besselink M/ 23- Brown J/	02:26	1-9	-8	0.4110	2	0	2	0	0.1701
0- Basham K/ 7- Jackson J/ 13- Besselink M/ 23- Brown J/ 32- Parkinson N/	02:07	1-0	1	0.4724	3	0	0	0	0.2577
3- Skinner T/ 10- Fauntleroy K/ 13- Besselink M/ 23- Brown J/ 32- Parkinson N/	01:52	4-2	2	2.1429	5	0	0	1	1.3889
0- Basham K/ 3- Skinner T/ 4- LoVett J/ 7- Jackson J/ 32- Parkinson N/	01:51	2-4	-2	1.0811	3	0	1	0	0.6667
3- Skinner T/ 7- Jackson J/ 10- Fauntleroy K/ 23- Brown J/ 32- Parkinson N/	01:47	4-4	0	2.2430	0	1	0	0	1.0309
1- Toure K/ 3- Skinner T/ 4- LoVett J/ 10- Fauntleroy K/ 32- Parkinson N/	01:31	4-2	2	2.6374	5	0	1	0	1.0638
1- Toure K/ 3- Skinner T/ 4- LoVett J/ 10- Fauntleroy K/ 13- Besselink M/	01:25	3-4	-1	2.1053	1	0	0	0	1.5000
7- Jackson J/ 10- Fauntleroy K/ 13- Besselink M/ 23- Brown J/ 32- Parkinson N/	01:02	0-3	-3	0.0000	1	0	0	0	0.0000
0- Basham K/ 3- Skinner T/ 7- Jackson J/ 13- Besselink M/ 23- Brown J/	00:49	0-0	0	0.0000	0	0	0	0	0.0000
0- Basham K/ 7- Jackson J/ 10- Fauntleroy K/ 13- Besselink M/ 23- Brown J/	00:43	0-2	-2	0.0000	2	0	1	0	0.0000
1- Toure K/ 3- Skinner T/ 10- Fauntleroy K/ 23- Brown J/ 32- Parkinson N/	00:41	0-3	-3	0.0000	0	0	0	0	0.0000
1- Toure K/ 4- LoVett J/ 7- Jackson J/ 10- Fauntleroy K/ 13- Besselink M/	00:39	4-3	1	6.0759	0	0	0	0	2.1277
3- Skinner T/ 4- LoVett J/ 13- Besselink M/ 23- Brown J/ 32- Parkinson N/	00:35	1-0	1	1.7143	0	1	0	0	1.1364
1- Toure K/ 4- LoVett J/ 7- Jackson J/ 10- Fauntleroy K/ 32- Parkinson N/	00:16	0-0	0	0.0000	1	0	0	0	0.0000
3- Skinner T/ 4- LoVett J/ 7- Jackson J/ 13- Besselink M/ 23- Brown J/	00:00	0-0	0	NaN	0	0	0	0	0.0000
3- Skinner T/ 4- LoVett J/ 10- Fauntleroy K/ 13- Besselink M/ 32- Parkinson N/	00:00	0-2	-2	NaN	0	0	0	0	0.0000



Arizona St. at Kentucky

11/26/24 Trojan Fieldhouse, Nashville
2024-25 Women's Basketball

Officials: Ify Seals, Troy Winders, Trey Miles

Kentucky

Lineup	Time	Score	Score Diff	Pts/Min	Reb	Stl	Tov	Ass	PPP
3- Amooore G/ 5- Rowe C/ 7- Key T/ 13- Strack C/ 32- Hassett A/	11:36	24-16	8	2.0678	16	2	2	6	1.1152
3- Amooore G/ 5- Rowe C/ 7- Key T/ 10- Lawrence D/ 17- Silva C/	07:36	16-19	-3	2.1053	7	1	1	4	1.1628
3- Amooore G/ 7- Key T/ 10- Lawrence D/ 13- Strack C/ 32- Hassett A/	06:01	5-6	-1	0.8310	8	1	2	2	0.5631
3- Amooore G/ 5- Rowe C/ 7- Key T/ 10- Lawrence D/ 32- Hassett A/	04:10	11-6	5	2.6316	3	0	2	3	1.3750
3- Amooore G/ 4- Blue L/ 10- Lawrence D/ 13- Strack C/ 32- Hassett A/	02:41	7-0	7	2.6087	3	1	1	2	1.4000
3- Amooore G/ 5- Rowe C/ 7- Key T/ 10- Lawrence D/ 13- Strack C/	02:04	1-4	-3	0.4839	0	1	1	0	0.3472
3- Amooore G/ 5- Rowe C/ 13- Strack C/ 17- Silva C/ 32- Hassett A/	01:57	2-5	-3	1.0256	1	0	0	0	1.0000
5- Rowe C/ 7- Key T/ 10- Lawrence D/ 13- Strack C/ 32- Hassett A/	01:35	5-0	5	3.1579	3	0	0	1	1.8116
3- Amooore G/ 4- Blue L/ 7- Key T/ 10- Lawrence D/ 32- Hassett A/	01:19	2-2	0	1.5190	1	0	2	0	0.5155
4- Blue L/ 5- Rowe C/ 7- Key T/ 13- Strack C/ 32- Hassett A/	00:45	2-2	0	2.6316	1	0	0	1	2.0000
3- Amooore G/ 4- Blue L/ 5- Rowe C/ 7- Key T/ 32- Hassett A/	00:14	2-1	1	8.4507	0	0	0	0	2.0000
3- Amooore G/ 5- Rowe C/ 7- Key T/ 17- Silva C/ 32- Hassett A/	00:00	0-0	0	NaN	0	0	0	0	0.0000
4- Blue L/ 7- Key T/ 10- Lawrence D/ 13- Strack C/ 32- Hassett A/	00:00	0-0	0	NaN	0	0	0	0	0.0000