



Kentucky at Vanderbilt

01/05/25 Memorial Gymnasium (Vanderbilt), Nashville
2024-25 Women's Basketball

Game Time: 2:00 PM
Game Duration: 1:47
Attendance: 8,501

Officials: Brian Garland, Demoya Pugh, Marla Gearhart

Kentucky - 96

Record: 13-1 (2-0)

NO. Name	Min	FG			3P			FT			Rebounds			Fouls		TP	AS	TO	ST	Blocks		+/-
		M-A	M-A	M-A	OR	DR	TOT	PF	FD	BS	BA											
7 Teonni Key	F 24:43	5-6	2-3	2-4	2	5	7	4	7	14	0	2	1	1	0	8						
32 Amelia Hassett	F 30:38	7-11	6-10	0-0	2	7	9	4	0	20	5	0	0	0	0	10						
13 Clara Strack	C 37:45	6-13	1-2	4-6	4	11	15	3	5	17	3	3	0	2	0	18						
3 Georgia Amooore	G 38:58	8-18	3-10	5-5	0	2	2	3	5	24	9	4	0	0	0	19						
10 Dazia Lawrence	G 38:49	6-10	3-5	2-3	0	1	1	1	2	17	0	0	2	0	0	15						
17 Clara Silva	13:12	1-1	0-0	0-0	0	4	4	3	0	2	2	1	0	1	0	13						
2 Saniah Tyler	04:22	0-0	0-0	2-2	0	0	0	0	1	2	0	0	0	0	0	-2						
4 Lexi Blue	03:06	0-1	0-0	0-0	0	0	0	0	0	0	0	0	0	0	0	0						
5 Cassidy Rowe	08:28	0-1	0-1	0-0	1	0	1	1	0	0	1	0	1	0	1	9						
Team					0	2	2			0		0										
Totals		33-61	15-31	15-20	9	32	41	19	20	96	20	10	4	4	1	18						

Technical Fouls:Key 2nd6:52

Shooting By Period		
1 st FG%	9-13	69.2%
3PT%	6-9	66.7%
FT%	7-8	87.5%
2 nd FG%	9-18	50.0%
3PT%	2-6	33.3%
FT%	0-1	0%
3 rd FG%	5-15	33.3%
3PT%	2-9	22.2%
FT%	7-8	87.5%
4 th FG%	10-15	66.7%
3PT%	5-7	71.4%
FT%	1-3	33.3%
GM FG%	33-61	54.1%
3PT%	15-31	48.4%
FT%	15-20	75.0%

Dead Ball Rebounds: 2, 0

Vanderbilt - 78

Record: 14-2 (1-1)

NO. Name	Min	FG			3P			FT			Rebounds			Fouls		TP	AS	TO	ST	Blocks		+/-
		M-A	M-A	M-A	OR	DR	TOT	PF	FD	BS	BA											
10 Jane Nwaba	F 16:29	1-5	1-3	3-4	3	1	4	3	3	6	0	0	0	0	0	-1						
12 Khamil Pierre	F 37:21	8-22	0-1	3-4	5	6	11	4	5	19	5	0	0	0	3	-13						
1 Mikayla Blakes	G 35:34	9-22	3-11	3-4	4	1	5	4	4	24	0	4	3	1	1	-13						
11 Jordyn Oliver	G 33:16	2-3	0-0	1-1	3	6	9	2	2	5	3	0	1	0	0	-9						
23 Iyana Moore	G 36:28	5-16	5-13	2-2	1	1	2	4	1	17	2	2	1	0	0	-18						
5 Leilani Kapinus	12:60	0-1	0-1	0-0	0	2	2	1	0	0	0	1	0	0	0	-14						
4 Madison Greene	18:51	1-4	0-1	1-1	0	1	1	2	1	3	1	0	0	0	0	-12						
14 Aiyana Mitchell	09:04	1-1	0-0	2-4	1	0	1	0	2	4	0	0	0	0	0	-10						
Team					2	2	4			0		0										
Totals		27-74	9-30	15-20	19	20	39	20	18	78	11	7	5	1	4	-18						

Technical Fouls::NONE

Shooting By Period		
1 st FG%	7-18	38.9%
3PT%	2-6	33.3%
FT%	1-2	50%
2 nd FG%	6-19	31.6%
3PT%	1-5	20.0%
FT%	8-9	88.9%
3 rd FG%	7-21	33.3%
3PT%	3-9	33.3%
FT%	2-4	50%
4 th FG%	7-16	43.8%
3PT%	3-10	30.0%
FT%	4-5	80%
GM FG%	27-74	36.5%
3PT%	9-30	30.0%
FT%	15-20	75.0%

Dead Ball Rebounds: 1, 2

	KENT	VANDY
Biggest lead	21 (4 th 3:38)	1 (1 st 9:06)
Best Scoring Run	9 (1 st 7:36)	8 (3 rd 8:46)
Lead Changes	2	
Times Tied	0	
Time with Lead	39:04	00:21

Points from	KENT	VANDY
Turnovers	16	7
Paint	26	26
Second Chance	9	26
Fast Breaks	6	5
Bench	4	7

	Period by Period Scoring				
	1st	2nd	3rd	4th	TOT
KENT	31	20	19	26	96
VANDY	17	21	19	21	78



Officials: Brian Garland, Demoya Pugh, Marla Gearhart

Period 1

Quarter Starters:

VANDY 1 Blakes M 10 Nwaba J 11 Oliver J 12 Pierre K 23 Moore I
KENT 3 Amooore G 7 Key T 10 Lawrence D 13 Strack C 32 Hassett A

Game Time	VANDY	Score	Diff	KENT
10:00	12 PIERRE K jumpball lost			7 KEY T jumpball won
09:50	1 BLAKES M foul drawn (1)			13 STRACK C foul offensive (1 - 1)
09:50				13 STRACK C turnover offensive (1)
09:36	12 PIERRE K 2pt FG from turnover outside the paint, jump shot missed			
09:32				32 HASSETT A defensive rebound (1)
09:25		0-2	-2	3 AMOORE G 2pt FG in the paint, driving layup made (2)
09:06	1 BLAKES M 3pt FG , jump shot made (3)	3-2	1	
09:06	11 OLIVER J assist (1)			
08:45		3-5	-2	32 HASSETT A 3pt FG , jump shot made (3)
08:45				13 STRACK C assist (1)
08:30	12 PIERRE K 2pt FG outside the paint, jump shot missed			
08:27				7 KEY T defensive rebound (1)
08:22				32 HASSETT A 3pt FG , jump shot missed
08:20				7 KEY T offensive rebound (2)
08:20	10 NWABA J foul personal (1 - 1)			7 KEY T foul drawn (1)
08:05		3-8	-5	3 AMOORE G 3pt FG second chance, jump shot made (5)
08:05				32 HASSETT A assist (1)
07:55	1 BLAKES M foul offensive (1 - 2)			3 AMOORE G foul drawn (1)
07:55	1 BLAKES M turnover offensive (1)			
07:36		3-11	-8	32 HASSETT A 3pt FG from turnover, jump shot made (6)
07:36				3 AMOORE G assist (1)
07:22	23 MOORE I foul drawn (1)			7 KEY T foul personal (1 - 2)
07:13	12 PIERRE K 3pt FG , jump shot missed			
07:10				32 HASSETT A defensive rebound (2)
07:00	11 OLIVER J steal (1)			3 AMOORE G turnover bad pass (1)
06:55	12 PIERRE K 2pt FG fast break from turnover in the paint, driving layup made (2)	5-11	-6	
06:39		5-14	-9	10 LAWRENCE D 3pt FG , jump shot made (3)
06:39				32 HASSETT A assist (2)
06:19	23 MOORE I 3pt FG , jump shot missed			
06:16				3 AMOORE G defensive rebound (1)
06:06		5-16	-11	3 AMOORE G 2pt FG in the paint, driving layup made (7)
05:46	12 PIERRE K 2pt FG in the paint, layup made (4)	7-16	-9	
05:46	11 OLIVER J assist (2)			
05:35		7-18	-11	7 KEY T 2pt FG in the paint, driving layup made (2)
05:35	10 NWABA J foul shooting (2 - 3)			7 KEY T foul drawn (2)
05:35	10 NWABA J substitution out			
05:35	5 KAPINUS L substitution in			
05:35				13 STRACK C substitution out
05:35				17 SILVA C substitution in
05:35		7-19	-12	7 KEY T free throw 1 - 1 made (3)
05:21	1 BLAKES M 2pt FG in the paint, layup blocked			
05:21				17 SILVA C block (1)



Officials: Brian Garland, Demoya Pugh, Marla Gearhart

Game Time	VANDY	Score	Diff	KENT
05:21	offensive rebound (1)			
05:13	11 OLIVER J 2pt FG second chance in the paint, layup made (2)	9-19	-10	
04:49		9-22	-13	32 HASSETT A 3pt FG , jump shot made (9)
04:49				17 SILVA C assist (1)
04:43	Timeout 30 Sec			
04:43	Timeout media			
04:32	1 BLAKES M 3pt FG , jump shot missed			
04:28				32 HASSETT A defensive rebound (3)
04:07				3 AMOORE G 3pt FG , jump shot missed
04:06	defensive rebound (2)			
04:06				7 KEY T substitution out
04:06				13 STRACK C substitution in
03:49	23 MOORE I 3pt FG , jump shot missed			
03:46				3 AMOORE G defensive rebound (2)
03:35		9-25	-16	10 LAWRENCE D 3pt FG , jump shot made (6)
03:35				32 HASSETT A assist (3)
03:26	1 BLAKES M 2pt FG in the paint, driving layup made (5)	11-25	-14	
03:13				3 AMOORE G turnover travel (2)
03:13	23 MOORE I substitution out			
03:13	4 GREENE M substitution in			
02:55	12 PIERRE K 2pt FG from turnover in the paint, turnaround jump shot missed			
02:51				13 STRACK C defensive rebound (1)
02:47				32 HASSETT A 3pt FG , jump shot missed
02:46				13 STRACK C offensive rebound (2)
02:46	jump ball situation			
02:46	1 BLAKES M steal (1)			13 STRACK C turnover lost ball (2)
02:46	5 KAPINUS L substitution out			
02:46	23 MOORE I substitution in			
02:46				10 LAWRENCE D substitution out
02:46				2 TYLER S substitution in
02:33	12 PIERRE K foul drawn (1)			17 SILVA C foul shooting (1 - 3)
02:33	12 PIERRE K free throw 1 - 2 made (5)	12-25	-13	
02:32	12 PIERRE K free throw 2 - 2 missed			
02:31				13 STRACK C defensive rebound (3)
02:19	23 MOORE I foul shooting (1 - 4)			13 STRACK C foul drawn (1)
02:19				13 STRACK C free throw 1 - 2 missed
02:19				offensive dead ball rebound (1)
02:19		12-26	-14	13 STRACK C free throw 2 - 2 made (1)
02:02	23 MOORE I 2pt FG in the paint, driving layup missed			
01:59				32 HASSETT A defensive rebound (4)
01:50	23 MOORE I foul shooting (2 - 5)			3 AMOORE G foul drawn (2)
01:50	11 OLIVER J substitution out			
01:50	14 MITCHELL A substitution in			
01:50		12-27	-15	3 AMOORE G free throw 1 - 3 made (8)
01:50		12-28	-16	3 AMOORE G free throw 2 - 3 made (9)
01:50		12-29	-17	3 AMOORE G free throw 3 - 3 made (10)
01:35	1 BLAKES M 2pt FG in the paint, jump shot missed			
01:35				17 SILVA C defensive rebound (1)



Official Basketball Play by Play - 1st Period
Kentucky at Vanderbilt
 01/05/25 Memorial Gymnasium (Vanderbilt), Nashville
 2024-25 Women's Basketball

Game Time: 2:00 PM
Game Duration: 1:47
Attendance: 8,501

Officials: Brian Garland, Demoya Pugh, Marla Gearhart

Game Time	VANDY	Score	Diff	KENT
01:35	12 PIERRE K foul drawn (2)			17 SILVA C foul personal (2 - 4)
01:35				3 AMOORE G substitution out
01:35				17 SILVA C substitution out
01:35				7 KEY T substitution in
01:35				10 LAWRENCE D substitution in
01:30	23 MOORE I 3pt FG , jump shot made (3)	15-29	-14	
01:30	12 PIERRE K assist (1)			
01:10	23 MOORE I steal (1)			13 STRACK C turnover bad pass (3)
01:01	1 BLAKES M turnover bad pass (2)			7 KEY T steal (1)
00:49	4 GREENE M foul personal (1 - 6)			2 TYLER S foul drawn (1)
00:49		15-30	-15	2 TYLER S free throw 1 - 2 made (1)
00:49		15-31	-16	2 TYLER S free throw 2 - 2 made (2)
00:32	12 PIERRE K 2pt FG outside the paint, jump shot missed			
00:32	offensive rebound (3)			
00:32				2 TYLER S substitution out
00:32				3 AMOORE G substitution in
00:22	12 PIERRE K 2pt FG second chance outside the paint, turnaround jump shot made (7)	17-31	-14	
00:01				10 LAWRENCE D 2pt FG outside the paint, jump shot missed
00:00	defensive dead ball rebound (1)			
END OF PERIOD				
VANDY 17-31 KENT				



Kentucky at Vanderbilt

01/05/25 Memorial Gymnasium (Vanderbilt), Nashville
2024-25 Women's Basketball

Game Time: 2:00 PM
Game Duration: 1:47
Attendance: 8,501

Officials: Brian Garland, Demoya Pugh, Marla Gearhart

Kentucky - 31

NO.	Name	F	Min	FG			Rebounds			Fouls		TP	AS	TO	ST	Blocks		+/-
				M-A	3P	FT	OR	DR	TOT	PF	FD					BS	BA	
7	Teonni Key	F	07:29	1-1	0-0	1-1	1	1	2	1	2	3	0	0	1	0	0	10
32	Amelia Hassett	F	10:00	3-5	3-5	0-0	0	4	4	0	0	9	3	0	0	0	0	14
13	Clara Strack	C	08:31	0-0	0-0	1-2	1	2	3	1	1	1	1	3	0	0	12	
3	Georgia Amooore	G	08:58	3-4	1-2	3-3	0	2	2	0	2	10	1	2	0	0	15	
10	Dazia Lawrence	G	08:49	2-3	2-2	0-0	0	0	0	0	0	6	0	0	0	0	11	
17	Clara Silva		04:00	0-0	0-0	0-0	0	1	1	2	0	0	1	0	0	1	6	
2	Saniah Tyler		02:13	0-0	0-0	2-2	0	0	0	0	1	2	0	0	0	0	2	
Team							0	0	0			0						
Totals				9-13	6-9	7-8	2	10	12	4	6	31	6	5	1	1	0	14

Shooting By Period		
1st FG%	9-13	69.2%
3PT%	6-9	66.7%
FT%	7-8	87.5%
GM FG%	9-13	69.2%
3PT%	6-9	66.7%
FT%	7-8	87.5%

Dead Ball Rebounds: 1, 0

Technical Fouls::NONE

Vanderbilt - 17

NO.	Name	F	Min	FG			Rebounds			Fouls		TP	AS	TO	ST	Blocks		+/-
				M-A	3P	FT	OR	DR	TOT	PF	FD					BS	BA	
10	Jane Nwaba	F	04:25	0-0	0-0	0-0	0	0	0	2	0	0	0	0	0	0	0	-11
12	Khamil Pierre	F	10:00	3-8	0-1	1-2	0	0	0	0	2	7	1	0	0	0	0	-14
1	Mikayla Blakes	G	10:00	2-5	1-2	0-0	0	0	0	1	1	5	0	2	1	0	1	-14
11	Jordyn Oliver	G	08:10	1-1	0-0	0-0	0	0	0	0	0	2	2	0	1	0	0	-14
23	Iyana Moore	G	09:33	1-4	1-3	0-0	0	0	0	2	1	3	0	0	1	0	0	-14
5	Leilani Kapinus		02:49	0-0	0-0	0-0	0	0	0	0	0	0	0	0	0	0	0	-3
4	Madison Greene		03:13	0-0	0-0	0-0	0	0	0	1	0	0	0	0	0	0	0	
14	Aiyana Mitchell		01:50	0-0	0-0	0-0	0	0	0	0	0	0	0	0	0	0	0	
Team							2	1	3			0						
Totals				7-18	2-6	1-2	2	1	3	6	4	17	3	2	3	0	1	-14

Shooting By Period		
1st FG%	7-18	38.9%
3PT%	2-6	33.3%
FT%	1-2	50%
GM FG%	7-18	38.9%
3PT%	2-6	33.3%
FT%	1-2	50.0%

Dead Ball Rebounds: 0, 1

Technical Fouls::NONE

	KENT	VANDY
Biggest lead	17 (1 st 1:50)	1 (1 st 9:06)
Best Scoring Run	9(1 st 7:36)	3(1 st 9:06)
Lead Changes	2	
Times Tied	0	
Time with Lead	09:04	00:21

Points from	KENT	VANDY
Turnovers	5	3
Paint	6	8
Second Chance	3	4
Fast Breaks	0	2
Bench	2	0

	Period by Period Scoring				
	1st	2nd	3rd	4th	TOT
KENT	31	20	19	26	96
VANDY	17	21	19	21	78



Officials: Brian Garland, Demoya Pugh, Marla Gearhart

Period 2

Quarter Starters:

VANDY	1 Blakes M	4 Greene M	5 Kapinus L	12 Pierre K	14 Mitchell A
KENT	3 Amooore G	4 Blue L	7 Key T	10 Lawrence D	13 Strack C

Game Time	VANDY	Score	Diff	KENT
10:00	23 MOORE I substitution out			
10:00	5 KAPINUS L substitution in			
10:00				32 HASSETT A substitution out
10:00				4 BLUE L substitution in
09:44				4 BLUE L 2pt FG outside the paint, jump shot missed
09:41	12 PIERRE K defensive rebound (1)			
09:32	1 BLAKES M 3pt FG , jump shot missed			
09:30	12 PIERRE K offensive rebound (2)			
09:29	12 PIERRE K 2pt FG second chance outside the paint, jump shot blocked			
09:29				7 KEY T block (1)
09:25				7 KEY T defensive rebound (3)
09:21				3 AMOORE G 3pt FG , jump shot missed
09:17	1 BLAKES M defensive rebound (1)			
09:13	1 BLAKES M foul offensive (2 - 1)			3 AMOORE G foul drawn (3)
09:13	1 BLAKES M turnover offensive (3)			
08:57		17-34	-17	7 KEY T 3pt FG from turnover, jump shot made (6)
08:35	4 GREENE M 3pt FG , jump shot missed			
08:32				7 KEY T defensive rebound (4)
08:23		17-37	-20	10 LAWRENCE D 3pt FG , jump shot made (9)
08:23				3 AMOORE G assist (2)
08:05	1 BLAKES M 2pt FG outside the paint, jump shot missed			
08:02	14 MITCHELL A offensive rebound (1)			
08:00	14 MITCHELL A 2pt FG second chance in the paint, layup made (2)	19-37	-18	
07:38				3 AMOORE G 3pt FG , jump shot missed
07:35	5 KAPINUS L defensive rebound (1)			
07:33	4 GREENE M 2pt FG fast break in the paint, driving layup made (2)	21-37	-16	
07:33	4 GREENE M foul drawn (1)			3 AMOORE G foul shooting (1 - 1)
07:33	1 BLAKES M substitution out			
07:33	12 PIERRE K substitution out			
07:33	11 OLIVER J substitution in			
07:33	23 MOORE I substitution in			
07:33				4 BLUE L substitution out
07:33				32 HASSETT A substitution in
07:33	4 GREENE M free throw fast break 1 - 1 made (3)	22-37	-15	
07:09				13 STRACK C 2pt FG in the paint, jump shot missed
07:05	11 OLIVER J defensive rebound (1)			
07:00	23 MOORE I 3pt FG , jump shot missed			
06:59				defensive rebound (15)
06:52		22-39	-17	7 KEY T 2pt FG in the paint, driving layup made (8)
06:52	11 OLIVER J foul shooting (1 - 2)			7 KEY T foul drawn (3)
06:52	11 OLIVER J substitution out			



Officials: Brian Garland, Demoya Pugh, Marla Gearhart

Game Time	VANDY	Score	Diff	KENT
06:52	12 PIERRE K substitution in			
06:52				7 KEY T foul player technical (2 - 2)
06:52				7 KEY T turnover offensive (1)
06:52				7 KEY T free throw 1 - 1 missed
06:52	defensive dead ball rebound (2)			
06:52	23 MOORE I free throw 1 - 2 made (4)	23-39	-16	
06:52	23 MOORE I free throw 2 - 2 made (5)	24-39	-15	
06:52				7 KEY T substitution out
06:52				17 SILVA C substitution in
06:35	12 PIERRE K 2pt FG in the paint, layup missed			
06:32				10 LAWRENCE D defensive rebound (1)
06:30		24-41	-17	10 LAWRENCE D 2pt FG fast break in the paint, driving layup made (11)
06:19	4 GREENE M 2pt FG outside the paint, jump shot missed			
06:17				defensive rebound (17)
06:17	14 MITCHELL A substitution out			
06:17	11 OLIVER J substitution in			
05:54				13 STRACK C 2pt FG in the paint, jump shot missed
05:51	12 PIERRE K defensive rebound (3)			
05:35	23 MOORE I 3pt FG , jump shot made (8)	27-41	-14	
05:21		27-43	-16	32 HASSETT A 2pt FG in the paint, driving layup made (11)
05:05	23 MOORE I 2pt FG outside the paint, jump shot missed			
05:01				17 SILVA C defensive rebound (2)
04:54		27-45	-18	17 SILVA C 2pt FG in the paint, layup made (2)
04:54				32 HASSETT A assist (4)
04:54	Timeout 30 Sec			
04:54	Timeout media			
04:54	4 GREENE M substitution out			
04:54	5 KAPINUS L substitution out			
04:54	1 BLAKES M substitution in			
04:54	10 NWABA J substitution in			
04:42	10 NWABA J foul drawn (1)			32 HASSETT A foul shooting (1 - 3)
04:42	10 NWABA J free throw 1 - 2 made (1)	28-45	-17	
04:40	10 NWABA J free throw 2 - 2 missed			
04:39				17 SILVA C defensive rebound (3)
04:19				17 SILVA C turnover bad pass (1)
04:09	1 BLAKES M 2pt FG from turnover in the paint, driving layup made (7)	30-45	-15	
03:37		30-47	-17	13 STRACK C 2pt FG outside the paint, jump shot made (3)
03:37				32 HASSETT A assist (5)
03:24	12 PIERRE K 2pt FG outside the paint, jump shot made (9)	32-47	-15	
03:02		32-49	-17	13 STRACK C 2pt FG outside the paint, jump shot made (5)
03:02				17 SILVA C assist (2)
02:42	1 BLAKES M 3pt FG , jump shot missed			
02:39				32 HASSETT A defensive rebound (5)
02:28				10 LAWRENCE D 3pt FG , jump shot missed
02:25	12 PIERRE K defensive rebound (4)			
02:09	12 PIERRE K foul drawn (3)			32 HASSETT A foul shooting (2 - 4)
02:09				17 SILVA C substitution out
02:09				2 TYLER S substitution in



Official Basketball Play by Play - 2nd Period
Kentucky at Vanderbilt
 01/05/25 Memorial Gymnasium (Vanderbilt), Nashville
 2024-25 Women's Basketball

Game Time: 2:00 PM
Game Duration: 1:47
Attendance: 8,501

Officials: Brian Garland, Demoya Pugh, Marla Gearhart

Game Time	VANDY	Score	Diff	KENT
02:09	12 PIERRE K free throw 1 - 2 made (10)	33-49	-16	
02:09	12 PIERRE K free throw 2 - 2 made (11)	34-49	-15	
01:50				32 HASSETT A 3pt FG , jump shot missed
01:46	11 OLIVER J defensive rebound (2)			
01:36	12 PIERRE K 2pt FG in the paint, jump shot missed			
01:33	12 PIERRE K offensive rebound (5)			
01:32	12 PIERRE K 2pt FG second chance in the paint, layup made (13)	36-49	-13	
01:18				3 AMOORE G turnover travel (3)
01:03	12 PIERRE K 2pt FG from turnover outside the paint, jump shot missed			
00:59	10 NWABA J offensive rebound (1)			
00:58	10 NWABA J 2pt FG from turnover second chance in the paint, layup missed			
00:55				13 STRACK C defensive rebound (4)
00:51				10 LAWRENCE D 2pt FG in the paint, layup missed
00:46				13 STRACK C offensive rebound (5)
00:46		36-51	-15	13 STRACK C 2pt FG second chance in the paint, tip-in layup made (7)
00:38	1 BLAKES M foul drawn (2)			32 HASSETT A foul shooting (3 - 5)
00:38	23 MOORE I substitution out			
00:38	4 GREENE M substitution in			
00:38				32 HASSETT A substitution out
00:38				4 BLUE L substitution in
00:38	1 BLAKES M free throw 1 - 2 made (8)	37-51	-14	
00:38	1 BLAKES M free throw 2 - 2 made (9)	38-51	-13	
00:38	10 NWABA J substitution out			
00:38	12 PIERRE K substitution out			
00:38	5 KAPINUS L substitution in			
00:38	14 MITCHELL A substitution in			
00:14				3 AMOORE G 2pt FG outside the paint, pull up jump shot missed
00:09	5 KAPINUS L defensive rebound (2)			
00:01	4 GREENE M 2pt FG outside the paint, jump shot missed			
00:00				13 STRACK C defensive rebound (6)
END OF PERIOD				
VANDY 38-51 KENT				



Kentucky at Vanderbilt

01/05/25 Memorial Gymnasium (Vanderbilt), Nashville
2024-25 Women's Basketball

Game Time: 2:00 PM
Game Duration: 1:47
Attendance: 8,501

Officials: Brian Garland, Demoya Pugh, Marla Gearhart

Kentucky - 20

NO.	Name	F	Min	FG	3P	FT	Rebounds			Fouls		TP	AS	TO	ST	Blocks		+/-
				M-A	M-A	M-A	OR	DR	TOT	PF	FD					BS	BA	
7	Teonni Key	F	03:08	2-2	1-1	0-1	0	2	2	1	1	5	0	1	0	1	0	1
32	Amelia Hassett	F	06:55	1-2	0-1	0-0	0	1	1	3	0	2	2	0	0	0	0	-1
13	Clara Strack	C	10:00	3-5	0-0	0-0	1	2	3	0	0	6	0	0	0	0	0	-1
3	Georgia Amooore	G	10:00	0-3	0-2	0-0	0	0	0	1	1	0	1	1	0	0	0	-1
10	Dazia Lawrence	G	10:00	2-4	1-2	0-0	0	1	1	0	0	5	0	0	0	0	0	-1
4	Lexi Blue		03:06	0-1	0-0	0-0	0	0	0	0	0	0	0	0	0	0	0	0
17	Clara Silva		04:43	1-1	0-0	0-0	0	2	2	0	0	2	1	1	0	0	0	2
2	Saniah Tyler		02:09	0-0	0-0	0-0	0	0	0	0	0	0	0	0	0	0	0	-4
Team							0	2	2			0		0				
Totals				9-18	2-6	0-1	1	10	11	5	2	20	4	3	0	1	0	-1

Shooting By Period		
2 nd FG%	9-18	50.0%
3PT%	2-6	33.3%
FT%	0-1	0%
GM FG%	9-18	50.0%
3PT%	2-6	33.3%
FT%	0-1	0.0%

Dead Ball Rebounds: 0, 0

Technical Fouls:Key 2nd6:52

Vanderbilt - 21

NO.	Name	F	Min	FG	3P	FT	Rebounds			Fouls		TP	AS	TO	ST	Blocks		+/-
				M-A	M-A	M-A	OR	DR	TOT	PF	FD					BS	BA	
10	Jane Nwaba	F	04:16	0-1	0-0	1-2	1	0	1	0	1	1	0	0	0	0	0	5
12	Khamil Pierre	F	08:41	2-6	0-0	2-2	2	3	5	0	1	6	0	0	0	0	1	2
1	Mikayla Blakes	G	07:21	1-4	0-2	2-2	0	1	1	1	1	4	0	1	0	0	0	3
11	Jordyn Oliver	G	06:58	0-0	0-0	0-0	0	2	2	1	0	0	0	0	0	0	0	3
23	Iyana Moore	G	06:55	1-3	1-2	2-2	0	0	0	0	0	5	0	0	0	0	0	1
5	Leilani Kapinus		05:45	0-0	0-0	0-0	0	2	2	0	0	0	0	0	0	0	0	-4
4	Madison Greene		05:45	1-4	0-1	1-1	0	0	0	0	1	3	0	0	0	0	0	-2
14	Aiyana Mitchell		04:22	1-1	0-0	0-0	1	0	1	0	0	2	0	0	0	0	0	-3
Team							0	0	0			0		0				
Totals				6-19	1-5	8-9	4	8	12	2	4	21	0	1	0	0	1	1

Shooting By Period		
2 nd FG%	6-19	31.6%
3PT%	1-5	20.0%
FT%	8-9	88.9%
GM FG%	6-19	31.6%
3PT%	1-5	20.0%
FT%	8-9	88.9%

Dead Ball Rebounds: 0, 1

Technical Fouls::NONE

	KENT	VANDY
Biggest lead	20 (2 nd 8:23)	0 (1 st 10:00)
Best Scoring Run	6(2 nd 8:23)	5(2 nd 7:33)
Lead Changes	0	
Times Tied	0	
Time with Lead	09:44	00:00

	KENT	VANDY
Points from		
Turnovers	3	4
Paint	10	8
Second Chance	2	4
Fast Breaks	2	3
Bench	2	5

	Period by Period Scoring				
	1st	2nd	3rd	4th	TOT
KENT	31	20	19	26	96
VANDY	17	21	19	21	78



Officials: Brian Garland, Demoya Pugh, Marla Gearhart

Kentucky - 51

NO.	Name	Min	FG	3P	FT	Rebounds			Fouls		TP	AS	TO	ST	Blocks		+/-
			M-A	M-A	M-A	OR	DR	TOT	PF	FD					BS	BA	
7	Teonni Key	F 10:37	3-3	1-1	1-2	1	3	4	2	3	8	0	1	1	1	0	11
32	Amelia Hassett	F 16:55	4-7	3-6	0-0	0	5	5	3	0	11	5	0	0	0	0	13
13	Clara Strack	C 18:31	3-5	0-0	1-2	2	4	6	1	1	7	1	3	0	0	0	11
3	Georgia Amooore	G 18:58	3-7	1-4	3-3	0	2	2	1	3	10	2	3	0	0	0	14
10	Dazia Lawrence	G 18:49	4-7	3-4	0-0	0	1	1	0	0	11	0	0	0	0	0	10
17	Clara Silva	08:43	1-1	0-0	0-0	0	3	3	2	0	2	2	1	0	1	0	8
2	Saniah Tyler	04:22	0-0	0-0	2-2	0	0	0	0	1	2	0	0	0	0	0	-2
4	Lexi Blue	03:06	0-1	0-0	0-0	0	0	0	0	0	0	0	0	0	0	0	0
Team						0	2	2			0		0				
Totals			18-31	8-15	7-9	3	20	23	9	8	51	10	8	1	2	0	13

Shooting By Period		
1 st FG%	9-13	69.2%
3PT%	6-9	66.7%
FT%	7-8	87.5%
2 nd FG%	9-18	50.0%
3PT%	2-6	33.3%
FT%	0-1	0%
GM FG%	18-31	58.1%
3PT%	8-15	53.3%
FT%	7-9	77.8%

Dead Ball Rebounds: 1, 0

Technical Fouls:Key 2nd6:52

Vanderbilt - 38

NO.	Name	Min	FG	3P	FT	Rebounds			Fouls		TP	AS	TO	ST	Blocks		+/-
			M-A	M-A	M-A	OR	DR	TOT	PF	FD					BS	BA	
10	Jane Nwaba	F 08:41	0-1	0-0	1-2	1	0	1	2	1	1	0	0	0	0	0	-6
12	Khamil Pierre	F 18:41	5-14	0-1	3-4	2	3	5	0	3	13	1	0	0	0	1	-12
1	Mikayla Blakes	G 17:21	3-9	1-4	2-2	0	1	1	2	2	9	0	3	1	0	1	-11
11	Jordyn Oliver	G 15:08	1-1	0-0	0-0	0	2	2	1	0	2	2	0	1	0	0	-11
23	Iyana Moore	G 16:28	2-7	2-5	2-2	0	0	0	2	1	8	0	0	1	0	0	-13
5	Leilani Kapinus	08:34	0-0	0-0	0-0	0	2	2	0	0	0	0	0	0	0	0	-7
4	Madison Greene	08:58	1-4	0-1	1-1	0	0	0	1	1	3	0	0	0	0	0	-2
14	Aiyana Mitchell	06:12	1-1	0-0	0-0	1	0	1	0	0	2	0	0	0	0	0	-3
Team						2	1	3			0		0				
Totals			13-37	3-11	9-11	6	9	15	8	8	38	3	3	3	0	2	-13

Shooting By Period		
1 st FG%	7-18	38.9%
3PT%	2-6	33.3%
FT%	1-2	50%
2 nd FG%	6-19	31.6%
3PT%	1-5	20.0%
FT%	8-9	88.9%
GM FG%	13-37	35.1%
3PT%	3-11	27.3%
FT%	9-11	81.8%

Dead Ball Rebounds: 0, 2

Technical Fouls::NONE

	KENT	VANDY
Biggest lead	20 (2 nd 8:23)	1 (1 st 9:06)
Best Scoring Run	9 (1 st 7:36)	5 (2 nd 7:33)
Lead Changes	2	
Times Tied	0	
Time with Lead	19:04	00:21

	KENT	VANDY
Points from		
Turnovers	8	7
Paint	16	16
Second Chance	5	8
Fast Breaks	2	5
Bench	4	5

	Period by Period Scoring				
	1st	2nd	3rd	4th	TOT
KENT	31	20	19	26	96
VANDY	17	21	19	21	78



Officials: Brian Garland, Demoya Pugh, Marla Gearhart

Period 3

Quarter Starters:

VANDY 1 Blakes M 10 Nwaba J 11 Oliver J 12 Pierre K 23 Moore I
KENT 3 Amooore G 7 Key T 10 Lawrence D 13 Strack C 32 Hassett A

Game Time	VANDY	Score	Diff	KENT
10:00	4 GREENE M substitution out			
10:00	5 KAPINUS L substitution out			
10:00	14 MITCHELL A substitution out			
10:00	10 NWABA J substitution in			
10:00	12 PIERRE K substitution in			
10:00	23 MOORE I substitution in			
10:00				2 TYLER S substitution out
10:00				4 BLUE L substitution out
10:00				7 KEY T substitution in
10:00				32 HASSETT A substitution in
09:42	12 PIERRE K 2pt FG in the paint, layup missed			
09:38	11 OLIVER J offensive rebound (3)			
09:27	10 NWABA J 3pt FG second chance, jump shot made (4)	41-51	-10	
09:27	12 PIERRE K assist (2)			
09:03				13 STRACK C 2pt FG outside the paint, turnaround jump shot missed
09:00	11 OLIVER J defensive rebound (4)			
08:56	12 PIERRE K 2pt FG in the paint, layup missed			
08:53	1 BLAKES M offensive rebound (2)			
08:52	1 BLAKES M 2pt FG second chance in the paint, layup missed			
08:49	11 OLIVER J offensive rebound (5)			
08:46	1 BLAKES M 3pt FG second chance, jump shot made (12)	44-51	-7	
08:46	12 PIERRE K assist (3)			
08:44				Timeout 30 Sec
08:44				Timeout media
08:17	10 NWABA J foul personal (3 - 1)			7 KEY T foul drawn (4)
08:16	10 NWABA J substitution out			
08:16	5 KAPINUS L substitution in			
07:59	11 OLIVER J foul shooting (2 - 2)			7 KEY T foul drawn (5)
07:59				7 KEY T free throw 1 - 2 missed
07:59				offensive dead ball rebound (2)
07:59		44-52	-8	7 KEY T free throw 2 - 2 made (9)
07:47	1 BLAKES M 2pt FG in the paint, driving layup made (14)	46-52	-6	
07:26				10 LAWRENCE D 3pt FG , jump shot missed
07:23				32 HASSETT A offensive rebound (6)
07:21				32 HASSETT A 3pt FG second chance, jump shot missed
07:18	12 PIERRE K defensive rebound (6)			
07:11	1 BLAKES M 3pt FG , jump shot missed			
07:08	1 BLAKES M offensive rebound (3)			
07:06	23 MOORE I 3pt FG second chance, jump shot missed			
07:05				7 KEY T defensive rebound (5)
07:05	12 PIERRE K foul personal (1 - 3)			7 KEY T foul drawn (6)
06:46				3 AMOORE G 3pt FG , jump shot missed



Officials: Brian Garland, Demoya Pugh, Marla Gearhart

Game Time	VANDY	Score	Diff	KENT
06:46				13 STRACK C offensive rebound (7)
06:46	1 BLAKES M foul personal (3 - 4)			13 STRACK C foul drawn (2)
06:46	1 BLAKES M substitution out			
06:46	4 GREENE M substitution in			
06:43		46-54	-8	13 STRACK C 2pt FG second chance outside the paint, jump shot made (9)
06:43				3 AMOORE G assist (3)
06:24	12 PIERRE K 2pt FG in the paint, layup blocked			
06:24				13 STRACK C block (1)
06:18	23 MOORE I offensive rebound (1)			
06:14	23 MOORE I 3pt FG second chance, jump shot made (11)	49-54	-5	
06:14	12 PIERRE K assist (4)			
05:54		49-56	-7	7 KEY T 2pt FG in the paint, layup made (11)
05:54				3 AMOORE G assist (4)
05:29	23 MOORE I turnover bad pass (1)			10 LAWRENCE D steal (1)
05:28	5 KAPINUS L foul personal (1 - 5)			10 LAWRENCE D foul drawn (1)
05:28		49-57	-8	10 LAWRENCE D free throw fast break 1 - 2 made (12)
05:28		49-58	-9	10 LAWRENCE D free throw fast break 2 - 2 made (13)
05:28				32 HASSETT A substitution out
05:28				5 ROWE C substitution in
05:18	11 OLIVER J foul drawn (1)			10 LAWRENCE D foul personal (1 - 1)
04:59	5 KAPINUS L 3pt FG , jump shot missed			
04:59				13 STRACK C defensive rebound (8)
04:59	12 PIERRE K foul personal (2 - 6)			13 STRACK C foul drawn (3)
04:59	Timeout media			
04:59	5 KAPINUS L substitution out			
04:59	1 BLAKES M substitution in			
04:59		49-59	-10	13 STRACK C free throw 1 - 2 made (10)
04:59		49-60	-11	13 STRACK C free throw 2 - 2 made (11)
04:43	12 PIERRE K 2pt FG in the paint, layup missed			
04:43	1 BLAKES M offensive rebound (4)			
04:43	1 BLAKES M foul drawn (3)			3 AMOORE G foul personal (2 - 2)
04:34	11 OLIVER J 2pt FG second chance in the paint, turnaround jump shot missed			
04:31				13 STRACK C defensive rebound (9)
04:07		49-63	-14	7 KEY T 3pt FG , jump shot made (14)
04:07				3 AMOORE G assist (5)
03:54	1 BLAKES M 3pt FG , jump shot missed			
03:50				13 STRACK C defensive rebound (10)
03:40				13 STRACK C 3pt FG , jump shot missed
03:37				7 KEY T offensive rebound (6)
03:30				3 AMOORE G 2pt FG second chance in the paint, layup missed
03:27	23 MOORE I defensive rebound (2)			
03:22	1 BLAKES M 2pt FG in the paint, layup made (16)	51-63	-12	
02:56				3 AMOORE G 3pt FG , jump shot missed
02:53				5 ROWE C offensive rebound (1)
02:52		51-65	-14	13 STRACK C 2pt FG second chance in the paint, layup made (13)
02:52				5 ROWE C assist (1)
02:37	1 BLAKES M 2pt FG outside the paint, jump shot made (18)	53-65	-12	



Officials: Brian Garland, Demoya Pugh, Marla Gearhart

Game Time	VANDY	Score	Diff	KENT
02:20	1 BLAKES M steal (2)			3 AMOORE G turnover bad pass (4)
02:20	12 PIERRE K substitution out			
02:20	10 NWABA J substitution in			
02:11	1 BLAKES M 3pt FG from turnover, jump shot missed			
02:11	10 NWABA J offensive rebound (2)			
02:11	10 NWABA J foul drawn (2)			7 KEY T foul personal (3 - 3)
02:11				7 KEY T substitution out
02:11				32 HASSETT A substitution in
02:04	23 MOORE I 3pt FG from turnover second chance, jump shot missed			
02:01				13 STRACK C defensive rebound (11)
01:43	23 MOORE I foul personal (3 - 7)			3 AMOORE G foul drawn (4)
01:43		53-66	-13	3 AMOORE G free throw 1 - 2 made (11)
01:43		53-67	-14	3 AMOORE G free throw 2 - 2 made (12)
01:43	11 OLIVER J substitution out			
01:43	14 MITCHELL A substitution in			
01:30	14 MITCHELL A foul drawn (1)			13 STRACK C foul shooting (2 - 4)
01:30	14 MITCHELL A free throw 1 - 2 made (3)	54-67	-13	
01:28	14 MITCHELL A free throw 2 - 2 missed			
01:27				13 STRACK C defensive rebound (12)
01:09		54-70	-16	32 HASSETT A 3pt FG , jump shot made (14)
01:09				13 STRACK C assist (2)
01:00	1 BLAKES M foul drawn (4)			5 ROWE C foul shooting (1 - 5)
01:00	4 GREENE M substitution out			
01:00	14 MITCHELL A substitution out			
01:00	11 OLIVER J substitution in			
01:00	12 PIERRE K substitution in			
01:00	1 BLAKES M free throw 1 - 2 made (19)	55-70	-15	
00:57	1 BLAKES M free throw 2 - 2 missed			
00:56				32 HASSETT A defensive rebound (7)
00:42				3 AMOORE G 2pt FG in the paint, layup missed
00:39				32 HASSETT A offensive rebound (8)
00:36				3 AMOORE G 3pt FG second chance, jump shot missed
00:33				13 STRACK C offensive rebound (13)
00:29				3 AMOORE G 3pt FG second chance, jump shot missed
00:24	11 OLIVER J defensive rebound (6)			
00:04	10 NWABA J 2pt FG in the paint, layup missed			
00:01	12 PIERRE K offensive rebound (7)			
00:00	12 PIERRE K 2pt FG second chance in the paint, layup blocked			
00:00				13 STRACK C block (2)
00:00	1 BLAKES M offensive rebound (5)			
00:00	1 BLAKES M 2pt FG second chance in the paint, jump shot made (21)	57-70	-13	
END OF PERIOD				
VANDY 57-70 KENT				



Kentucky at Vanderbilt

01/05/25 Memorial Gymnasium (Vanderbilt), Nashville
2024-25 Women's Basketball

Game Time: 2:00 PM
Game Duration: 1:47
Attendance: 8,501

Officials: Brian Garland, Demoya Pugh, Marla Gearhart

Kentucky - 19

NO.	Name	F	Min	FG			Rebounds			Fouls		TP	AS	TO	ST	Blocks		+/-
				M-A	3P	FT	OR	DR	TOT	PF	FD					BS	BA	
7	Teonni Key	F	07:49	2-2	1-1	1-2	1	1	2	1	3	6	0	0	0	0	0	-1
32	Amelia Hassett	F	06:43	1-2	1-2	0-0	2	1	3	0	0	3	0	0	0	0	0	-3
13	Clara Strack	C	10:00	2-4	0-1	2-2	2	5	7	1	2	6	1	0	0	2	0	0
3	Georgia Amooore	G	10:00	0-6	0-4	2-2	0	0	0	1	1	2	3	1	0	0	0	0
10	Dazia Lawrence	G	10:00	0-1	0-1	2-2	0	0	0	1	1	2	0	0	1	0	0	0
2	Saniah Tyler		00:00	0-0	0-0	0-0	0	0	0	0	0	0	0	0	0	0	0	0
4	Lexi Blue		00:00	0-0	0-0	0-0	0	0	0	0	0	0	0	0	0	0	0	0
5	Cassidy Rowe		05:28	0-0	0-0	0-0	1	0	1	1	0	0	1	0	0	0	0	4
Team							0	0	0		0		0					
Totals				5-15	2-9	7-8	6	7	13	5	7	19	5	1	1	2	0	0

Shooting By Period		
3 rd FG%	5-15	33.3%
3PT%	2-9	22.2%
FT%	7-8	87.5%
GM FG%	5-15	33.3%
3PT%	2-9	22.2%
FT%	7-8	87.5%

Dead Ball Rebounds: 1, 0

Technical Fouls::NONE

Vanderbilt - 19

NO.	Name	F	Min	FG			Rebounds			Fouls		TP	AS	TO	ST	Blocks		+/-
				M-A	3P	FT	OR	DR	TOT	PF	FD					BS	BA	
10	Jane Nwaba	F	04:04	1-2	1-1	0-0	1	0	1	1	1	3	0	0	0	0	0	5
12	Khamil Pierre	F	08:40	0-5	0-0	0-0	1	1	2	2	0	0	3	0	0	0	2	4
1	Mikayla Blakes	G	08:13	5-9	1-4	1-2	4	0	4	1	2	12	0	0	1	0	0	3
11	Jordyn Oliver	G	09:17	0-1	0-0	0-0	2	2	4	1	1	0	0	0	0	0	0	2
23	Iyana Moore	G	10:00	1-3	1-3	0-0	1	1	2	1	0	3	0	1	0	0	0	0
5	Leilani Kapinus		03:17	0-1	0-1	0-0	0	0	0	1	0	0	0	0	0	0	0	-2
4	Madison Greene		05:46	0-0	0-0	0-0	0	0	0	0	0	0	0	0	0	0	0	-10
14	Aiyana Mitchell		00:43	0-0	0-0	1-2	0	0	0	0	1	1	0	0	0	0	0	-2
Team							0	0	0		0		0					
Totals				7-21	3-9	2-4	9	4	13	7	5	19	3	1	1	0	2	0

Shooting By Period		
3 rd FG%	7-21	33.3%
3PT%	3-9	33.3%
FT%	2-4	50%
GM FG%	7-21	33.3%
3PT%	3-9	33.3%
FT%	2-4	50.0%

Dead Ball Rebounds: 0, 0

Technical Fouls::NONE

	KENT	VANDY
Biggest lead	16 (3 rd 1:09)	0 (1 st 10:00)
Best Scoring Run	9(3 rd 4:07)	6(3 rd 8:46)
Lead Changes	0	
Times Tied	0	
Time with Lead	09:42	00:00

Points from	KENT	VANDY
Turnovers	2	0
Paint	4	6
Second Chance	4	11
Fast Breaks	2	0
Bench	0	1

	Period by Period Scoring				
	1st	2nd	3rd	4th	TOT
KENT	31	20	19	26	96
VANDY	17	21	19	21	78



Officials: Brian Garland, Demoya Pugh, Marla Gearhart

Period 4

Quarter Starters:

VANDY 1 Blakes M 10 Nwaba J 11 Oliver J 12 Pierre K 23 Moore I
KENT 3 Amooore G 7 Key T 10 Lawrence D 17 Silva C 32 Hassett A

Game Time	VANDY	Score	Diff	KENT
10:00				5 ROWE C substitution out
10:00				13 STRACK C substitution out
10:00				7 KEY T substitution in
10:00				17 SILVA C substitution in
09:31				7 KEY T 3pt FG , jump shot missed
09:28	11 OLIVER J defensive rebound (7)			
09:20	23 MOORE I 3pt FG , jump shot missed			
09:17	10 NWABA J offensive rebound (3)			
09:14	11 OLIVER J 2pt FG second chance in the paint, layup made (4)	59-70	-11	
09:14	12 PIERRE K assist (5)			
09:14	11 OLIVER J foul drawn (2)			3 AMOORE G foul shooting (3 - 1)
09:14				17 SILVA C substitution out
09:14				13 STRACK C substitution in
09:14	11 OLIVER J free throw 1 - 1 made (5)	60-70	-10	
08:57				13 STRACK C 2pt FG in the paint, layup missed
08:54	10 NWABA J defensive rebound (4)			
08:47	1 BLAKES M 3pt FG , jump shot missed			
08:45				7 KEY T defensive rebound (7)
08:38		60-73	-13	32 HASSETT A 3pt FG , jump shot made (17)
08:38				3 AMOORE G assist (6)
08:20	12 PIERRE K 2pt FG outside the paint, jump shot made (15)	62-73	-11	
08:01	jump ball situation			
08:01	1 BLAKES M steal (3)			7 KEY T turnover lost ball (2)
07:50	12 PIERRE K foul drawn (4)			7 KEY T foul personal (4 - 2)
07:50				7 KEY T substitution out
07:50				17 SILVA C substitution in
07:39	10 NWABA J 3pt FG from turnover, jump shot missed			
07:38				13 STRACK C defensive rebound (14)
07:16		62-75	-13	3 AMOORE G 2pt FG outside the paint, pull up jump shot made (14)
07:16				13 STRACK C assist (3)
07:07	10 NWABA J foul drawn (3)			32 HASSETT A foul shooting (4 - 3)
07:07				32 HASSETT A substitution out
07:07				5 ROWE C substitution in
07:07	10 NWABA J free throw 1 - 2 made (5)	63-75	-12	
07:07	10 NWABA J free throw 2 - 2 made (6)	64-75	-11	
06:38				13 STRACK C 2pt FG in the paint, turnaround jump shot missed
06:34	11 OLIVER J defensive rebound (8)			
06:29	10 NWABA J 3pt FG , jump shot missed			
06:25				17 SILVA C defensive rebound (4)
06:24		64-77	-13	10 LAWRENCE D 2pt FG fast break in the paint, driving layup made (15)
06:24				3 AMOORE G assist (7)
06:24	23 MOORE I foul shooting (4 - 1)			10 LAWRENCE D foul drawn (2)



Officials: Brian Garland, Demoya Pugh, Marla Gearhart

Game Time	VANDY	Score	Diff	KENT
06:21				10 LAWRENCE D free throw fast break 1 - 1 missed
06:20	12 PIERRE K defensive rebound (8)			
06:16	12 PIERRE K foul drawn (5)			17 SILVA C foul personal (3 - 4)
06:16	10 NWABA J substitution out			
06:16	14 MITCHELL A substitution in			
06:11	12 PIERRE K 2pt FG outside the paint, jump shot made (17)	66-77	-11	
06:11	23 MOORE I assist (1)			
05:53	1 BLAKES M foul personal (4 - 2)			13 STRACK C foul drawn (4)
05:44		66-79	-13	10 LAWRENCE D 2pt FG outside the paint, jump shot made (17)
05:39	1 BLAKES M turnover bad pass (4)			10 LAWRENCE D steal (2)
05:31				5 ROWE C 3pt FG from turnover, jump shot blocked
05:31	1 BLAKES M block (1)			
05:31	defensive rebound (34)			
05:21	1 BLAKES M 2pt FG outside the paint, jump shot missed			
05:18	11 OLIVER J offensive rebound (9)			
05:16	14 MITCHELL A foul drawn (2)			13 STRACK C foul shooting (3 - 5)
05:16	11 OLIVER J substitution out			
05:16	5 KAPINUS L substitution in			
05:16	14 MITCHELL A free throw 1 - 2 missed			
05:16	offensive dead ball rebound (3)			
05:16	14 MITCHELL A free throw 2 - 2 made (4)	67-79	-12	
04:46		67-82	-15	3 AMOORE G 3pt FG , step back jump shot made (17)
04:25	5 KAPINUS L turnover bad pass (1)			5 ROWE C steal (1)
04:08		67-85	-18	3 AMOORE G 3pt FG from turnover, jump shot made (20)
04:07	Timeout 30 Sec			
04:07	Timeout media			
04:07	5 KAPINUS L substitution out			
04:07	14 MITCHELL A substitution out			
04:07	4 GREENE M substitution in			
04:07	11 OLIVER J substitution in			
04:07				5 ROWE C substitution out
04:07				17 SILVA C substitution out
04:07				7 KEY T substitution in
04:07				32 HASSETT A substitution in
03:54	23 MOORE I turnover lost ball (2)			
03:38		67-88	-21	13 STRACK C 3pt FG from turnover, jump shot made (16)
03:38				3 AMOORE G assist (8)
03:26	23 MOORE I 3pt FG , jump shot missed			
03:24	12 PIERRE K offensive rebound (9)			
03:20	1 BLAKES M 3pt FG second chance, jump shot made (24)	70-88	-18	
03:20	23 MOORE I assist (2)			
03:03				Timeout 30 Sec
02:59	12 PIERRE K foul personal (3 - 3)			7 KEY T foul drawn (7)
02:48	4 GREENE M foul personal (2 - 4)			3 AMOORE G foul drawn (5)
02:39		70-91	-21	32 HASSETT A 3pt FG , jump shot made (20)
02:39				3 AMOORE G assist (9)
02:20	12 PIERRE K 2pt FG in the paint, turnaround jump shot made (19)	72-91	-19	
02:01	12 PIERRE K foul personal (4 - 5)			13 STRACK C foul drawn (5)



Official Basketball Play by Play - 4th Period
Kentucky at Vanderbilt
 01/05/25 Memorial Gymnasium (Vanderbilt), Nashville
 2024-25 Women's Basketball

Game Time: 2:00 PM
Game Duration: 1:47
Attendance: 8,501

Officials: Brian Garland, Demoya Pugh, Marla Gearhart

Game Time	VANDY	Score	Diff	KENT
02:01		72-92	-20	13 STRACK C free throw 1 - 2 made (17)
02:01				13 STRACK C free throw 2 - 2 missed
01:59	12 PIERRE K defensive rebound (10)			
01:53	23 MOORE I 3pt FG , jump shot made (14)	75-92	-17	
01:53	11 OLIVER J assist (3)			
01:38		75-94	-19	3 AMOORE G 2pt FG in the paint, driving layup made (22)
01:27	23 MOORE I 3pt FG , jump shot made (17)	78-94	-16	
01:27	4 GREENE M assist (1)			
01:17				13 STRACK C 2pt FG in the paint, jump shot missed
01:13	4 GREENE M defensive rebound (1)			
01:09	1 BLAKES M 3pt FG , jump shot missed			
01:06	12 PIERRE K offensive rebound (11)			
01:01	23 MOORE I 3pt FG second chance, jump shot missed			
00:58				32 HASSETT A defensive rebound (9)
00:32		78-96	-18	3 AMOORE G 2pt FG in the paint, driving layup made (24)
00:16	23 MOORE I 2pt FG outside the paint, jump shot missed			
00:11				13 STRACK C defensive rebound (15)
END OF GAME				
VANDY 78-96 KENT				



Kentucky at Vanderbilt

01/05/25 Memorial Gymnasium (Vanderbilt), Nashville
2024-25 Women's Basketball

Game Time: 2:00 PM
Game Duration: 1:47
Attendance: 8,501

Officials: Brian Garland, Demoya Pugh, Marla Gearhart

Kentucky - 26

NO.	Name	F	Min	FG	3P	FT	Rebounds			Fouls		TP	AS	TO	ST	Blocks		+/-
				M-A	M-A	M-A	OR	DR	TOT	PF	FD					BS	BA	
7	Teonni Key	F	06:17	0-1	0-1	0-0	0	1	1	1	1	0	0	1	0	0	0	-2
32	Amelia Hassett	F	07:00	2-2	2-2	0-0	0	1	1	1	0	6	0	0	0	0	0	0
13	Clara Strack	C	09:14	1-4	1-1	1-2	0	2	2	1	2	4	1	0	0	0	0	7
3	Georgia Amoore	G	10:00	5-5	2-2	0-0	0	0	0	1	1	12	4	0	0	0	0	5
10	Dazia Lawrence	G	10:00	2-2	0-0	0-1	0	0	0	0	1	4	0	0	1	0	0	5
17	Clara Silva		04:29	0-0	0-0	0-0	0	1	1	1	0	0	0	0	0	0	0	5
5	Cassidy Rowe		03:00	0-1	0-1	0-0	0	0	0	0	0	0	0	0	1	0	1	5
Team							0	0	0			0		0				
Totals				10-15	5-7	1-3	0	5	5	5	5	26	5	1	2	0	1	5

Shooting By Period		
4 th FG%	10-15	66.7%
3PT%	5-7	71.4%
FT%	1-3	33.3%
GM FG%	10-15	66.7%
3PT%	5-7	71.4%
FT%	1-3	33.3%

Dead Ball Rebounds: 0, 0

Technical Fouls::NONE

Vanderbilt - 21

NO.	Name	F	Min	FG	3P	FT	Rebounds			Fouls		TP	AS	TO	ST	Blocks		+/-
				M-A	M-A	M-A	OR	DR	TOT	PF	FD					BS	BA	
10	Jane Nwaba	F	03:44	0-2	0-2	2-2	1	1	2	0	1	2	0	0	0	0	0	0
12	Khamil Pierre	F	10:00	3-3	0-0	0-0	2	2	4	2	2	6	1	0	0	0	0	-5
1	Mikayla Blakes	G	10:00	1-4	1-3	0-0	0	0	0	1	0	3	0	1	1	1	0	-5
11	Jordyn Oliver	G	08:51	1-1	0-0	1-1	1	2	3	0	1	3	1	0	0	0	0	0
23	Iyana Moore	G	10:00	2-6	2-5	0-0	0	0	0	1	0	6	2	1	0	0	0	-5
14	Aiyana Mitchell		02:09	0-0	0-0	1-2	0	0	0	0	1	1	0	0	0	0	0	-5
5	Leilani Kapinus		01:09	0-0	0-0	0-0	0	0	0	0	0	0	0	1	0	0	0	-5
4	Madison Greene		04:07	0-0	0-0	0-0	0	1	1	1	0	0	1	0	0	0	0	0
Team							0	1	1			0		0				
Totals				7-16	3-10	4-5	4	7	11	5	5	21	5	3	1	1	0	-5

Shooting By Period		
4 th FG%	7-16	43.8%
3PT%	3-10	30.0%
FT%	4-5	80%
GM FG%	7-16	43.8%
3PT%	3-10	30.0%
FT%	4-5	80.0%

Dead Ball Rebounds: 1, 0

Technical Fouls::NONE

	KENT	VANDY
Biggest lead	21 (4 th 3:38)	0 (1 st 10:00)
Best Scoring Run	9(4 th 3:38)	3(4 th 9:14)
Lead Changes	0	
Times Tied	0	
Time with Lead	09:31	00:00

Points from	KENT	VANDY
Turnovers	6	0
Paint	6	4
Second Chance	0	7
Fast Breaks	2	0
Bench	0	1

	Period by Period Scoring				
	1st	2nd	3rd	4th	TOT
KENT	31	20	19	26	96
VANDY	17	21	19	21	78



Officials: Brian Garland, Demoya Pugh, Marla Gearhart

Kentucky - 45

NO.	Name	F	Min	FG	3P	FT	Rebounds			Fouls		TP	AS	TO	ST	Blocks		+/-
				M-A	M-A	M-A	OR	DR	TOT	PF	FD					BS	BA	
7	Teonni Key	F	14:06	2-3	1-2	1-2	1	2	3	2	4	6	0	1	0	0	0	-3
32	Amelia Hassett	F	13:43	3-4	3-4	0-0	2	2	4	1	0	9	0	0	0	0	0	-3
13	Clara Strack	C	19:14	3-8	1-2	3-4	2	7	9	2	4	10	2	0	0	2	0	7
3	Georgia Amooore	G	20:00	5-11	2-6	2-2	0	0	0	2	2	14	7	1	0	0	0	5
10	Dazia Lawrence	G	20:00	2-3	0-1	2-3	0	0	0	1	2	6	0	0	2	0	0	5
2	Saniah Tyler		00:00	0-0	0-0	0-0	0	0	0	0	0	0	0	0	0	0	0	0
4	Lexi Blue		00:00	0-0	0-0	0-0	0	0	0	0	0	0	0	0	0	0	0	0
5	Cassidy Rowe		08:28	0-1	0-1	0-0	1	0	1	1	0	0	1	0	1	0	1	9
17	Clara Silva		04:29	0-0	0-0	0-0	0	1	1	1	0	0	0	0	0	0	0	5
Team							0	0	0			0						
Totals				15-30	7-16	8-11	6	12	18	10	12	45	10	2	3	2	1	5

Shooting By Period		
3 rd FG%	5-15	33.3%
3PT%	2-9	22.2%
FT%	7-8	87.5%
4 th FG%	10-15	66.7%
3PT%	5-7	71.4%
FT%	1-3	33.3%
GM FG%	15-30	50.0%
3PT%	7-16	43.8%
FT%	8-11	72.7%

Dead Ball Rebounds: 1, 0

Technical Fouls::NONE

Vanderbilt - 40

NO.	Name	F	Min	FG	3P	FT	Rebounds			Fouls		TP	AS	TO	ST	Blocks		+/-
				M-A	M-A	M-A	OR	DR	TOT	PF	FD					BS	BA	
10	Jane Nwaba	F	07:48	1-4	1-3	2-2	2	1	3	1	2	5	0	0	0	0	0	5
12	Khamil Pierre	F	18:40	3-8	0-0	0-0	3	3	6	4	2	6	4	0	0	0	2	-1
1	Mikayla Blakes	G	18:13	6-13	2-7	1-2	4	0	4	2	2	15	0	1	2	1	0	-2
11	Jordyn Oliver	G	18:08	1-2	0-0	1-1	3	4	7	1	2	3	1	0	0	0	0	2
23	Iyana Moore	G	20:00	3-9	3-8	0-0	1	1	2	2	0	9	2	2	0	0	0	-5
5	Leilani Kapinus		04:26	0-1	0-1	0-0	0	0	0	1	0	0	0	1	0	0	0	-7
4	Madison Greene		09:53	0-0	0-0	0-0	0	1	1	1	0	0	1	0	0	0	0	-10
14	Aiyana Mitchell		02:52	0-0	0-0	2-4	0	0	0	0	2	2	0	0	0	0	0	-7
Team							0	1	1			0						
Totals				14-37	6-19	6-9	13	11	24	12	10	40	8	4	2	1	2	-5

Shooting By Period		
3 rd FG%	7-21	33.3%
3PT%	3-9	33.3%
FT%	2-4	50%
4 th FG%	7-16	43.8%
3PT%	3-10	30.0%
FT%	4-5	80%
GM FG%	14-37	37.8%
3PT%	6-19	31.6%
FT%	6-9	66.7%

Dead Ball Rebounds: 1, 0

Technical Fouls::NONE

	KENT	VANDY
Biggest lead	21 (4 th 3:38)	0 (1 st 10:00)
Best Scoring Run	9(3 rd 4:07)	6(3 rd 8:46)
Lead Changes	0	
Times Tied	0	
Time with Lead	19:42	00:00

Points from	KENT	VANDY
Turnovers	8	0
Paint	10	10
Second Chance	4	18
Fast Breaks	4	0
Bench	0	2

	Period by Period Scoring				
	1st	2nd	3rd	4th	TOT
KENT	31	20	19	26	96
VANDY	17	21	19	21	78



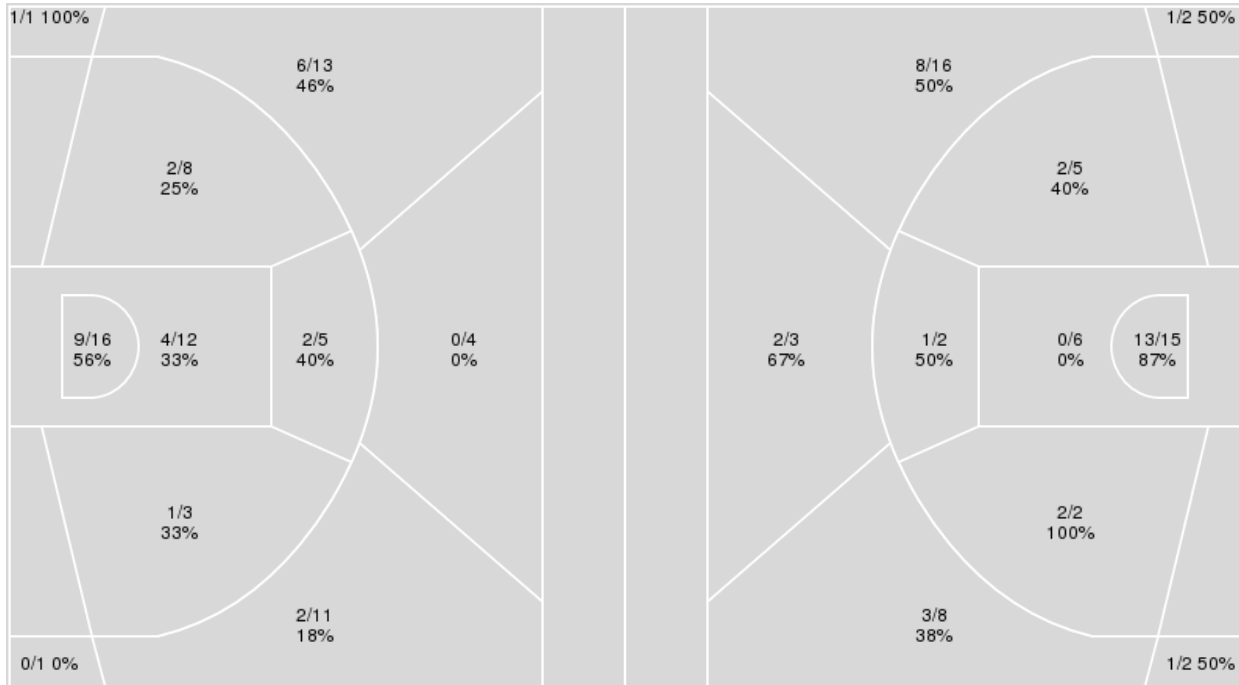
Officials: Brian Garland, Demoya Pugh, Marla Gearhart

{ Players => All; } FG Types => All; Results => All;

{ Players => All; } FG Types => All; Results => All;

Vanderbilt

Kentucky



Vanderbilt	M/A	%
Field Goals	27/74	36
2 Points	18/44	41
3 Points	9/30	30
Free Throws	15/20	75

Kentucky	M/A	%
Field Goals	33/61	54
2 Points	18/30	60
3 Points	15/31	48
Free Throws	15/20	75



Kentucky at Vanderbilt

01/05/25 Memorial Gymnasium (Vanderbilt), Nashville
2024-25 Women's Basketball

Officials: Brian Garland, Demoya Pugh, Marla Gearhart

Kentucky

No	Name	Mins		Score		Points Diff		Points per Min		Assists		Rebounds		Steals		Turnovers	
		On	Off	On	Off	On	Off	On	Off	On	Off	On	Off	On	Off	On	Off
2	Saniah Tyler	04:22	35:38	8 - 10	88 - 68	-2	20	1.83	2.47	0	20	6	35	1	3	2	8
3	Georgia Amooore	38:58	01:02	94 - 75	2 - 3	19	-1	2.41	1.93	20	0	41	0	3	1	9	1
4	Lexi Blue	03:06	36:55	6 - 6	90 - 72	0	18	1.94	2.44	1	19	3	38	0	4	0	10
5	Cassidy Rowe	08:28	31:32	22 - 13	74 - 65	9	9	2.60	2.35	4	16	11	30	2	2	1	9
7	Teonni Key	24:43	15:17	60 - 52	36 - 26	8	10	2.43	2.36	13	7	20	21	2	2	6	4
10	Dazia Lawrence	38:49	01:11	92 - 77	4 - 1	15	3	2.37	3.38	20	0	38	3	4	0	10	0
13	Clara Strack	37:45	02:15	92 - 74	4 - 4	18	0	2.44	1.78	19	1	40	1	4	0	10	0
17	Clara Silva	13:12	26:48	33 - 20	63 - 58	13	5	2.50	2.35	7	13	14	27	2	2	3	7
32	Amelia Hassett	30:38	09:23	73 - 63	23 - 15	10	8	2.38	2.45	16	4	32	9	2	2	9	1

Vanderbilt

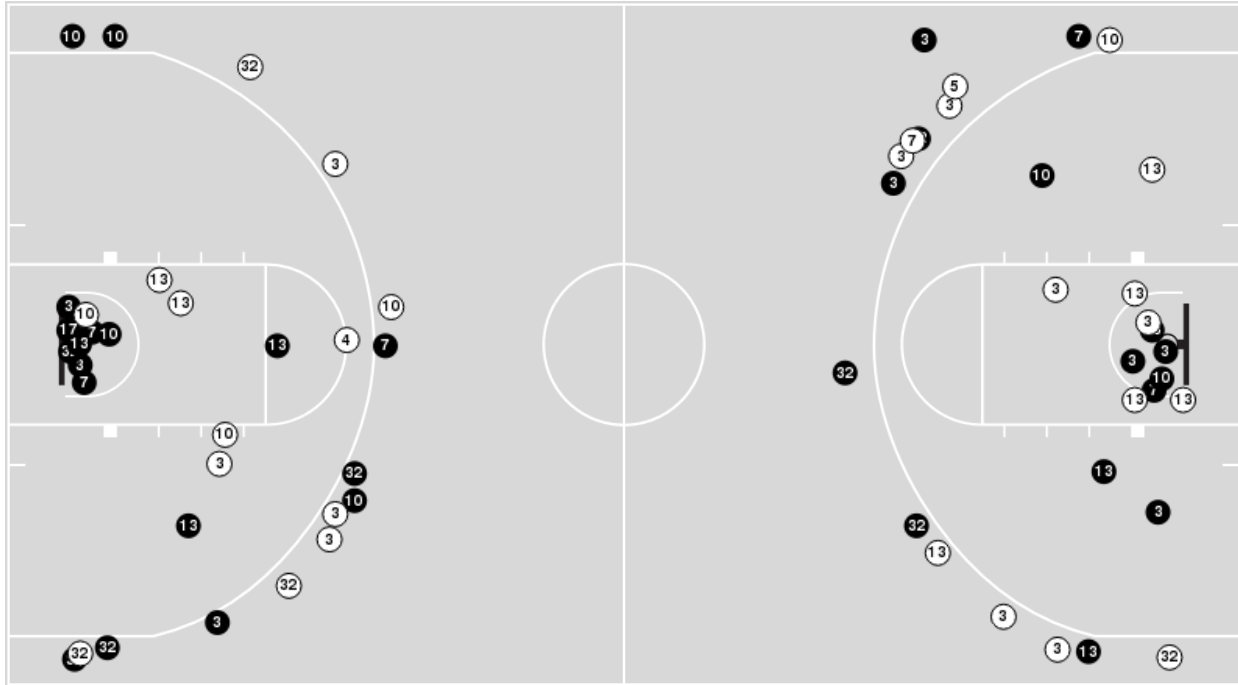
No	Name	Mins		Score		Points Diff		Points per Min		Assists		Rebounds		Steals		Turnovers	
		On	Off	On	Off	On	Off	On	Off	On	Off	On	Off	On	Off	On	Off
1	Mikayla Blakes	35:34	04:26	69 - 82	9 - 14	-13	-5	1.94	2.03	10	1	36	3	5	0	6	1
4	Madison Greene	18:51	21:10	37 - 49	41 - 47	-12	-6	1.96	1.94	5	6	17	22	3	2	4	3
5	Leilani Kapinus	12:60	27:01	20 - 34	58 - 62	-14	-4	1.54	2.15	1	10	13	26	1	4	3	4
10	Jane Nwaba	16:29	23:32	35 - 36	43 - 60	-1	-17	2.12	1.83	5	6	17	22	2	3	1	6
11	Jordyn Oliver	33:16	06:44	65 - 74	13 - 22	-9	-9	1.95	1.93	10	1	33	6	4	1	4	3
12	Khamil Pierre	37:21	02:40	76 - 89	2 - 7	-13	-5	2.04	0.75	11	0	36	3	5	0	7	0
14	Aiyana Mitchell	09:04	30:57	16 - 26	62 - 70	-10	-8	1.77	2.00	2	9	10	29	1	4	4	3
23	Iyana Moore	36:28	03:33	72 - 90	6 - 6	-18	0	1.97	1.69	11	0	33	6	4	1	6	1



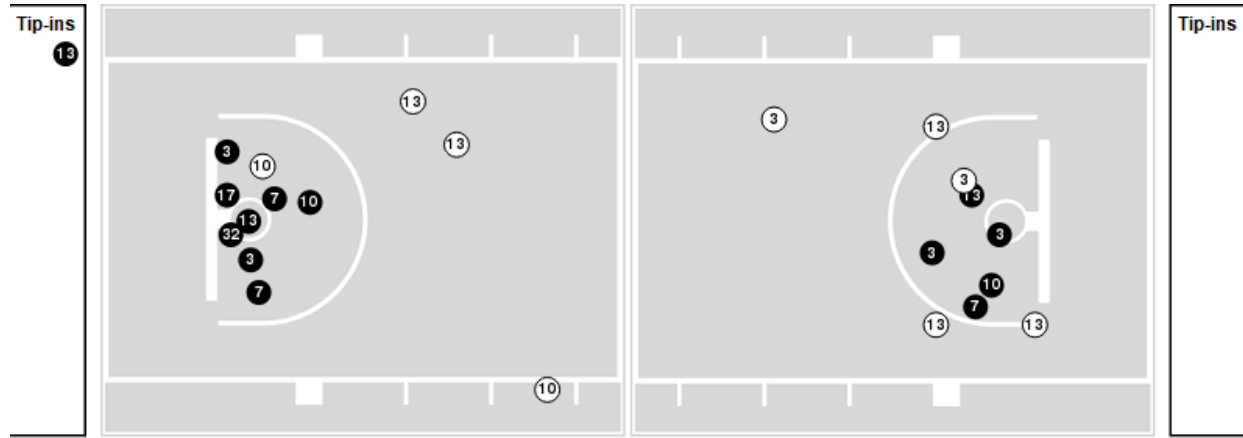
Officials: Brian Garland, Demoya Pugh, Marla Gearhart

Players => AllFG Types=>AllResults=>All
Kentucky

All Field Goals



Blow Up Chart



● Made ○ Missed N - Player Number

Kentucky	M/A	%
Field Goals	33/61	54
2 Points	18/30	60
3 Points	15/31	48
Free Throws	15/20	75

Kentucky	M/A	%
Points in the Paint	26 (13 / 21)	62
Fast Break Points	6 (4/5)	80
Second Chance Points	9 (4/8)	50
Effective FG%	66	

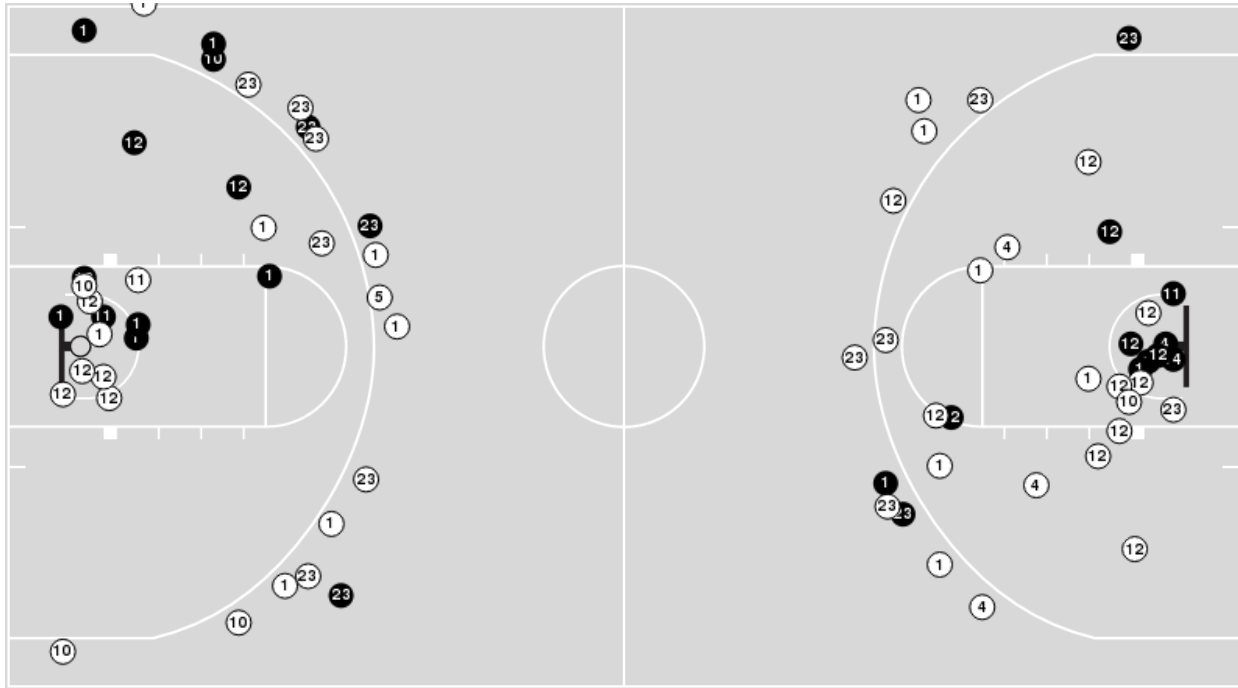


Officials: Brian Garland, Demoya Pugh, Marla Gearhart

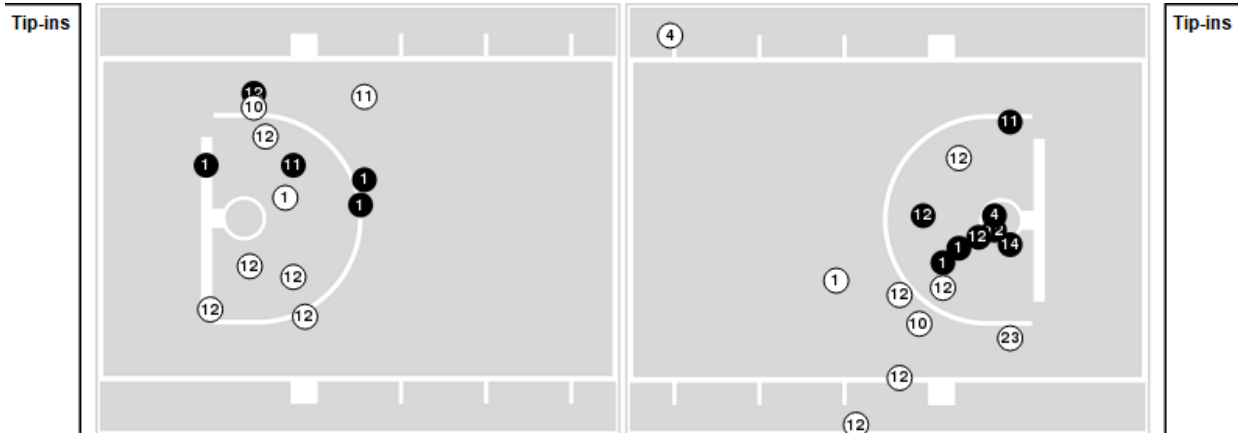
Players => AllFG Types=>AllResults=>All

Vanderbilt

All Field Goals



Blow Up Chart



● Made ○ Missed N - Player Number

Vanderbilt	M/A	%
Field Goals	27/74	36
2 Points	18/44	41
3 Points	9/30	30
Free Throws	15/20	75

Vanderbilt	M/A	%
Points in the Paint	26 (13 / 28)	46
Fast Break Points	5 (3/3)	100
Second Chance Points	26 (12/21)	57
Effective FG%	43	



Officials: Brian Garland, Demoya Pugh, Marla Gearhart

Kentucky

Lineup	Quarter On	Time On	Quarter Off	Time Off	Time on Court	Score	Score Diff	Reb	Stl	Tov	Ass	PPP
3- Amoore G/ 7- Key T/ 10- Lawrence D/ 13- Strack C/ 32- Hassett A/	1	10:00	1	05:35	04:25	18-7	11	5	0	2	4	2.0000
3- Amoore G/ 7- Key T/ 10- Lawrence D/ 17- Silva C/ 32- Hassett A/	1	05:35	1	04:06	01:29	4-2	2	1	0	0	1	1.6393
3- Amoore G/ 10- Lawrence D/ 13- Strack C/ 17- Silva C/ 32- Hassett A/	1	04:06	1	02:46	01:20	3-2	1	3	0	2	1	1.0000
2- Tyler S/ 3- Amoore G/ 13- Strack C/ 17- Silva C/ 32- Hassett A/	1	02:46	1	01:35	01:11	4-1	3	3	0	0	0	1.8182
2- Tyler S/ 7- Key T/ 10- Lawrence D/ 13- Strack C/ 32- Hassett A/	1	01:35	1	00:32	01:02	2-3	-1	0	1	1	0	1.0638
3- Amoore G/ 7- Key T/ 10- Lawrence D/ 13- Strack C/ 32- Hassett A/	1	00:32	2	10:00	00:32	0-2	-2	0	0	0	0	0.0000
3- Amoore G/ 4- Blue L/ 7- Key T/ 10- Lawrence D/ 13- Strack C/	2	10:00	2	07:33	02:27	6-4	2	2	0	0	1	1.2000
3- Amoore G/ 7- Key T/ 10- Lawrence D/ 13- Strack C/ 32- Hassett A/	2	07:33	2	06:52	00:41	2-3	-1	1	0	1	0	0.5814
3- Amoore G/ 10- Lawrence D/ 13- Strack C/ 17- Silva C/ 32- Hassett A/	2	06:52	2	02:09	04:43	10-8	2	5	0	1	3	1.2500
2- Tyler S/ 3- Amoore G/ 10- Lawrence D/ 13- Strack C/ 32- Hassett A/	2	02:09	2	00:38	01:30	2-4	-2	2	0	1	0	0.6667
2- Tyler S/ 3- Amoore G/ 4- Blue L/ 10- Lawrence D/ 13- Strack C/	2	00:38	3	10:00	00:38	0-2	-2	1	0	0	0	0.0000
3- Amoore G/ 7- Key T/ 10- Lawrence D/ 13- Strack C/ 32- Hassett A/	3	10:00	3	05:28	04:32	7-11	-4	3	1	0	2	1.2153
3- Amoore G/ 5- Rowe C/ 7- Key T/ 10- Lawrence D/ 13- Strack C/	3	05:28	3	02:11	03:17	7-4	3	5	0	1	2	1.4344
3- Amoore G/ 5- Rowe C/ 10- Lawrence D/ 13- Strack C/ 32- Hassett A/	3	02:11	4	10:00	02:11	5-4	1	5	0	0	1	1.7361
3- Amoore G/ 7- Key T/ 10- Lawrence D/ 17- Silva C/ 32- Hassett A/	4	10:00	4	09:14	00:46	0-2	-2	0	0	0	0	0.0000
3- Amoore G/ 7- Key T/ 10- Lawrence D/ 13- Strack C/ 32- Hassett A/	4	09:14	4	07:50	01:24	3-3	0	1	0	1	1	1.0000
3- Amoore G/ 10- Lawrence D/ 13- Strack C/ 17- Silva C/ 32- Hassett A/	4	07:50	4	07:07	00:43	2-0	2	1	0	0	1	2.0000
3- Amoore G/ 5- Rowe C/ 10- Lawrence D/ 13- Strack C/ 17- Silva C/	4	07:07	4	04:07	03:00	10-5	5	1	2	0	1	1.5528
3- Amoore G/ 7- Key T/ 10- Lawrence D/ 13- Strack C/ 32- Hassett A/	4	04:07	4	00:00	04:07	11-11	0	2	0	0	2	1.8707



Officials: Brian Garland, Demoya Pugh, Marla Gearhart

Vanderbilt

Lineup	Quarter On	Time On	Quarter Off	Time Off	Time on Court	Score	Score Diff	Reb	Stl	Tov	Ass	PPP
1- Blakes M/ 10- Nwaba J/ 11- Oliver J/ 12- Pierre K/ 23- Moore I/	1	10:00	1	05:35	04:25	7-18	-11	0	1	1	2	0.8750
1- Blakes M/ 5- Kapinus L/ 11- Oliver J/ 12- Pierre K/ 23- Moore I/	1	05:35	1	03:13	02:22	4-7	-3	2	0	0	0	1.0000
1- Blakes M/ 4- Greene M/ 5- Kapinus L/ 11- Oliver J/ 12- Pierre K/	1	03:13	1	02:46	00:27	0-0	0	0	1	0	0	0.0000
1- Blakes M/ 4- Greene M/ 11- Oliver J/ 12- Pierre K/ 23- Moore I/	1	02:46	1	01:50	00:56	1-1	0	0	0	0	0	0.5319
1- Blakes M/ 4- Greene M/ 12- Pierre K/ 14- Mitchell A/ 23- Moore I/	1	01:50	2	10:00	01:50	5-5	0	1	1	1	1	1.2500
1- Blakes M/ 4- Greene M/ 5- Kapinus L/ 12- Pierre K/ 14- Mitchell A/	2	10:00	2	07:33	02:27	4-6	-2	5	0	1	0	0.8000
4- Greene M/ 5- Kapinus L/ 11- Oliver J/ 14- Mitchell A/ 23- Moore I/	2	07:33	2	06:52	00:41	1-2	-1	1	0	0	0	0.6944
4- Greene M/ 5- Kapinus L/ 12- Pierre K/ 14- Mitchell A/ 23- Moore I/	2	06:52	2	06:17	00:35	2-2	0	0	0	0	0	0.6944
4- Greene M/ 5- Kapinus L/ 11- Oliver J/ 12- Pierre K/ 23- Moore I/	2	06:17	2	04:54	01:23	3-4	-1	1	0	0	0	1.5000
1- Blakes M/ 10- Nwaba J/ 11- Oliver J/ 12- Pierre K/ 23- Moore I/	2	04:54	2	00:38	04:15	9-6	3	4	0	0	0	1.3314
1- Blakes M/ 4- Greene M/ 10- Nwaba J/ 11- Oliver J/ 12- Pierre K/	2	00:38	2	00:38	00:00	2-0	2	0	0	0	0	2.2727
1- Blakes M/ 4- Greene M/ 5- Kapinus L/ 11- Oliver J/ 14- Mitchell A/	2	00:38	3	10:00	00:38	0-0	0	1	0	0	0	0.0000
1- Blakes M/ 10- Nwaba J/ 11- Oliver J/ 12- Pierre K/ 23- Moore I/	3	10:00	3	08:16	01:44	6-0	6	4	0	0	2	3.0000
1- Blakes M/ 5- Kapinus L/ 11- Oliver J/ 12- Pierre K/ 23- Moore I/	3	08:16	3	06:46	01:30	2-1	1	2	0	0	0	1.0000
4- Greene M/ 5- Kapinus L/ 11- Oliver J/ 12- Pierre K/ 23- Moore I/	3	06:46	3	04:59	01:47	3-6	-3	1	0	1	1	1.0000
1- Blakes M/ 4- Greene M/ 11- Oliver J/ 12- Pierre K/ 23- Moore I/	3	04:59	3	02:20	02:39	4-7	-3	2	1	0	0	1.0000
1- Blakes M/ 4- Greene M/ 10- Nwaba J/ 11- Oliver J/ 23- Moore I/	3	02:20	3	01:43	00:37	0-2	-2	1	0	0	0	0.0000
1- Blakes M/ 4- Greene M/ 10- Nwaba J/ 14- Mitchell A/ 23- Moore I/	3	01:43	3	01:00	00:43	1-3	-2	0	0	0	0	1.1364
1- Blakes M/ 10- Nwaba J/ 11- Oliver J/ 12- Pierre K/ 23- Moore I/	3	01:00	4	06:16	04:44	10-7	3	8	1	0	1	1.2195
1- Blakes M/ 11- Oliver J/ 12- Pierre K/ 14- Mitchell A/ 23- Moore I/	4	06:16	4	05:16	01:00	2-2	0	2	0	1	1	1.0000
1- Blakes M/ 5- Kapinus L/ 12- Pierre K/ 14- Mitchell A/ 23- Moore I/	4	05:16	4	04:07	01:09	1-6	-5	0	0	1	0	0.5319
1- Blakes M/ 4- Greene M/ 11- Oliver J/ 12- Pierre K/ 23- Moore I/	4	04:07	4	00:00	04:07	11-11	0	4	0	1	3	1.5714



Kentucky at Vanderbilt

01/05/25 Memorial Gymnasium (Vanderbilt), Nashville
2024-25 Women's Basketball

Game Time: 2:00 PM
Game Duration: 1:47
Attendance: 8,501

Officials: Brian Garland, Demoya Pugh, Marla Gearhart

Kentucky

Lineup	Time	Score	Score Diff	Pts/Min	Reb	Stl	Tov	Ass	PPP
3- Amooore G/ 7- Key T/ 10- Lawrence D/ 13- Strack C/ 32- Hassett A/	15:41	41-37	4	2.6120	12	1	4	9	1.4601
3- Amooore G/ 10- Lawrence D/ 13- Strack C/ 17- Silva C/ 32- Hassett A/	06:46	15-10	5	2.2167	9	0	3	5	1.2500
3- Amooore G/ 5- Rowe C/ 7- Key T/ 10- Lawrence D/ 13- Strack C/	03:17	7-4	3	2.1320	5	0	1	2	1.4344
3- Amooore G/ 5- Rowe C/ 10- Lawrence D/ 13- Strack C/ 17- Silva C/	03:00	10-5	5	3.3333	1	2	0	1	1.5528
3- Amooore G/ 4- Blue L/ 7- Key T/ 10- Lawrence D/ 13- Strack C/	02:27	6-4	2	2.4490	2	0	0	1	1.2000
3- Amooore G/ 7- Key T/ 10- Lawrence D/ 17- Silva C/ 32- Hassett A/	02:15	4-4	0	1.7778	1	0	0	1	1.1628
3- Amooore G/ 5- Rowe C/ 10- Lawrence D/ 13- Strack C/ 32- Hassett A/	02:11	5-4	1	2.2901	5	0	0	1	1.7361
2- Tyler S/ 3- Amooore G/ 10- Lawrence D/ 13- Strack C/ 32- Hassett A/	01:30	2-4	-2	1.3260	2	0	1	0	0.6667
2- Tyler S/ 3- Amooore G/ 13- Strack C/ 17- Silva C/ 32- Hassett A/	01:11	4-1	3	3.3803	3	0	0	0	1.8182
2- Tyler S/ 7- Key T/ 10- Lawrence D/ 13- Strack C/ 32- Hassett A/	01:02	2-3	-1	1.9293	0	1	1	0	1.0638
2- Tyler S/ 3- Amooore G/ 4- Blue L/ 10- Lawrence D/ 13- Strack C/	00:38	0-2	-2	0.0000	1	0	0	0	0.0000



Kentucky at Vanderbilt

01/05/25 Memorial Gymnasium (Vanderbilt), Nashville
2024-25 Women's Basketball

Game Time: 2:00 PM
Game Duration: 1:47
Attendance: 8,501

Officials: Brian Garland, Demoya Pugh, Marla Gearhart

Vanderbilt

Lineup	Time	Score	Score Diff	Pts/Min	Reb	Stl	Tov	Ass	PPP
1- Blakes M/ 10- Nwaba J/ 11- Oliver J/ 12- Pierre K/ 23- Moore I/	15:08	32-31	1	2.1134	16	2	1	5	1.2821
1- Blakes M/ 4- Greene M/ 11- Oliver J/ 12- Pierre K/ 23- Moore I/	07:42	16-19	-3	2.0779	6	1	1	3	1.2422
1- Blakes M/ 5- Kapinus L/ 11- Oliver J/ 12- Pierre K/ 23- Moore I/	03:52	6-8	-2	1.5517	4	0	0	0	1.0000
4- Greene M/ 5- Kapinus L/ 11- Oliver J/ 12- Pierre K/ 23- Moore I/	03:10	6-10	-4	1.8947	2	0	1	1	1.2000
1- Blakes M/ 4- Greene M/ 5- Kapinus L/ 12- Pierre K/ 14- Mitchell A/	02:27	4-6	-2	1.6327	5	0	1	0	0.8000
1- Blakes M/ 4- Greene M/ 12- Pierre K/ 14- Mitchell A/ 23- Moore I/	01:50	5-5	0	2.7273	1	1	1	1	1.2500
1- Blakes M/ 5- Kapinus L/ 12- Pierre K/ 14- Mitchell A/ 23- Moore I/	01:09	1-6	-5	0.8696	0	0	1	0	0.5319
1- Blakes M/ 11- Oliver J/ 12- Pierre K/ 14- Mitchell A/ 23- Moore I/	01:00	2-2	0	2.0000	2	0	1	1	1.0000
1- Blakes M/ 4- Greene M/ 10- Nwaba J/ 14- Mitchell A/ 23- Moore I/	00:43	1-3	-2	1.3953	0	0	0	0	1.1364
4- Greene M/ 5- Kapinus L/ 11- Oliver J/ 14- Mitchell A/ 23- Moore I/	00:41	1-2	-1	1.4634	1	0	0	0	0.6944
1- Blakes M/ 4- Greene M/ 5- Kapinus L/ 11- Oliver J/ 14- Mitchell A/	00:38	0-0	0	0.0000	1	0	0	0	0.0000
1- Blakes M/ 4- Greene M/ 10- Nwaba J/ 11- Oliver J/ 23- Moore I/	00:37	0-2	-2	0.0000	1	0	0	0	0.0000
4- Greene M/ 5- Kapinus L/ 12- Pierre K/ 14- Mitchell A/ 23- Moore I/	00:35	2-2	0	3.4286	0	0	0	0	0.6944
1- Blakes M/ 4- Greene M/ 5- Kapinus L/ 11- Oliver J/ 12- Pierre K/	00:27	0-0	0	0.0000	0	1	0	0	0.0000
1- Blakes M/ 4- Greene M/ 10- Nwaba J/ 11- Oliver J/ 12- Pierre K/	00:00	2-0	2	∞	0	0	0	0	2.2727