



More Connectivity. More Proof. More Utility.

Operated in collaboration with Minutes Network Token X Ltd (St Lucia) & World Mobile Treasury Group Ltd (BVI).

“Utility” refers to functional participation within the Unetwork Edge Network, not token or investment utility.



© 2026 Unity Network Limited (Hong Kong). All rights reserved.

Executive Summary

Unetwork operates a composable, people-powered global edge network with vast geo-diverse coverage. It collects real-time telemetry & network data & delivers it to carriers & enterprises, helping them detect & prevent fraud, revenue leakage, & other network risks.

Unetwork also supports critical functions such as data transit & other infrastructure services, powered not by centralized servers but by real users across the globe.

By introducing a new sharing economy model, Unetwork enables participants to earn rewards directly for powering the network - bridging real-world telecom activity with decentralized digital value.

Participation is usage-based & non-financial. Participants perform Proof-of-Work related tasks & receive operational remuneration for contribution. No part constitutes an offer of securities or investment interests.

Proof at the Edge

- Unetwork places proof where telecom traffic actually flows - at the edge.
- Every device & every IP address contributes to a global, real-time ledger of connectivity events.
- Telemetry is timestamped, hashed to WMChain & auditable by carriers or regulators.
- This framework removes subjective reporting & introduces data integrity verified by thousands of independent participants. Enterprises gain evidence-based coverage maps & governments can monitor quality-of-service objectively.
- Proof becomes a commodity of trust.



Unetwork Software Licenses

A Unetwork Software License activates the Unetwork Application. Each license represents the right to perform & earn from an array of services under Hong Kong law.

Core Features:

- Purchase Unetwork Credits - Credits fuel verification sessions; each session produces proof-of-performance data recorded on-chain.
- Top Up Anytime - Credits remain unused until the (leased) license is activated & operational.
- Unetwork Operator Software Licenses are leasable from within the Unetwork Node Operator's management portal.

Unetwork provides software & verification access only & does not mint or sell tokens. Any MNTx or WMTx allocations are issued separately by their treasuries.

Digital Lease Model

Unetwork Operator Software Licenses can be leased directly through the Unetwork Application, enabling effortless collaboration between Unetwork Node Operators & Unetwork License Operators.

Within the app, Node Operators define the percentage of rewards to be shared under an instant, automated digital contract - creating a transparent & frictionless system for expanding participation across the network.

The Global Telecommunications Market

The global telecom market is worth approximately \$2 trillion USD annually. Unetwork is built to lead in network integrity & verification through its decentralized growth model.

With unmatched global scale being enabled by its distributed edge devices, Unetwork is positioned as the preferred partner for carriers & enterprises worldwide.

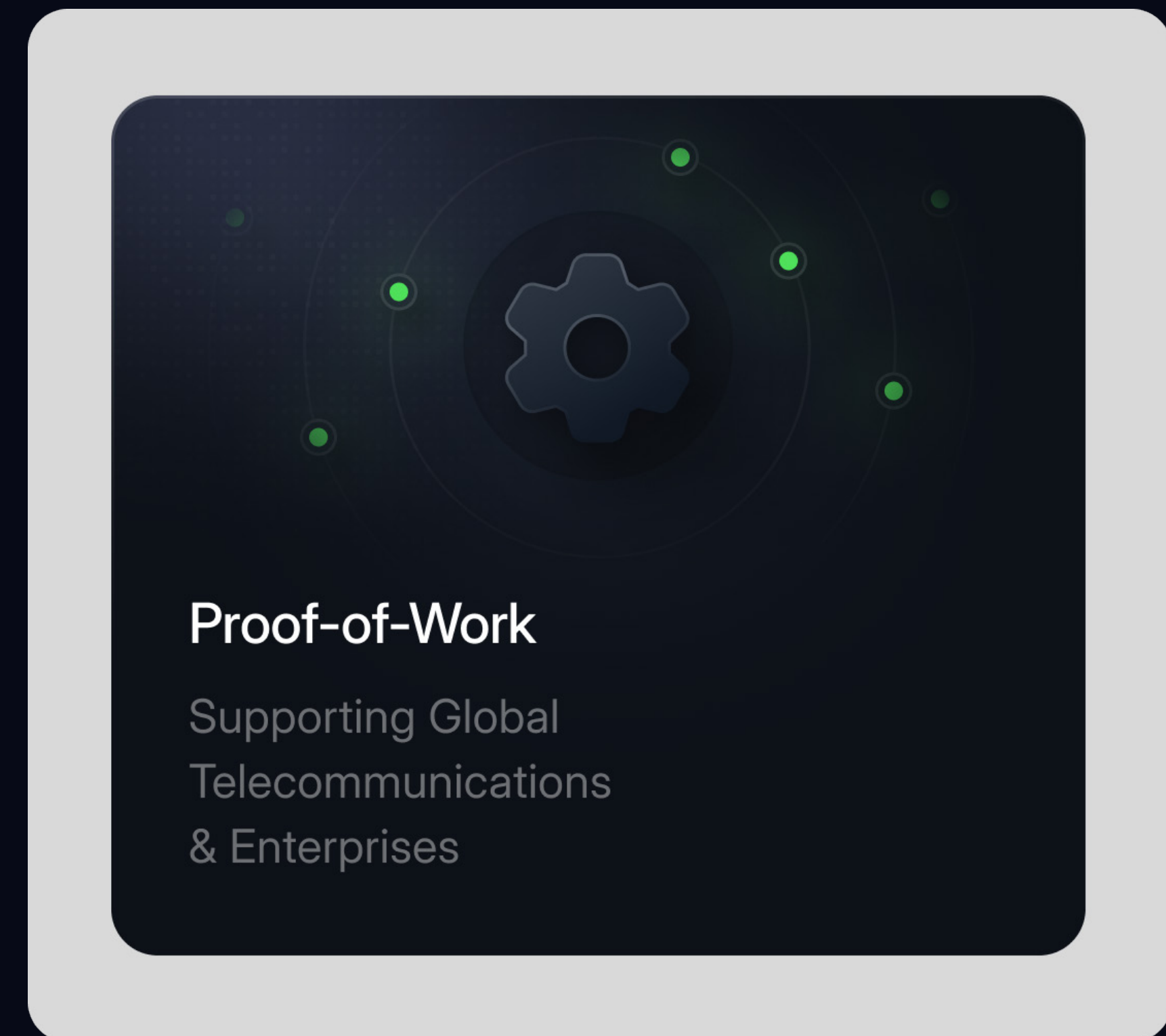


Proof of Work and Network Fees

Unetwork ties real-world demand to community rewards:

- Unetwork provides a range of decentralised telecom services to carriers & enterprises & generates network service fees.
- Unetwork License Operators earn 75% of the network service fees they generate. If their license is leased, a portion of those fees flows back to the connected Unetwork Node Operator.
- Unetwork Node Operators are rewarded from work contributed by active or leased Unetwork License Operators.
- 25% of all network service fees are pooled & transferred to WMTx & MNTx to support the network's Earth Nodes, Switch Nodes, & Validation Nodes.

Unetwork Nodes do not dilute existing MNTx & WMTx pools - instead, they strengthen them with fees generated by the Unetwork Global Edge Network.



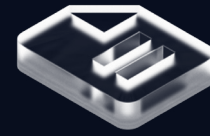
Unetwork Unwrapped

Participate using your smartphone, expand Unetwork's global presence and contribute Proof-of-Work to generate rewards.



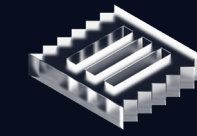
Scarcity

6,000 Unetwork Nodes exist, each with 200 Unetwork Operator Software Licenses.



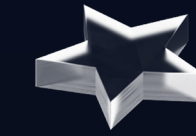
Proof-of-Work

Supporting Global Telecommunications & Enterprises.



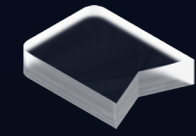
On-Chain Proof

All PoW documented and hashed to WMChain for verifiable auditability.



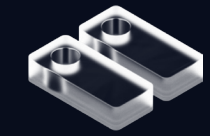
Utility-Driven Rewards

Powered by fees generated through services provided to global enterprise & carrier industries.



Ownership

Unetwork Node Software Licenses & Unetwork Operator Software Licenses are represented by NFTs.



WMTx & MNTx Included

14,575 MNTx + 15,119 WMTx included, locked for 24 months*.



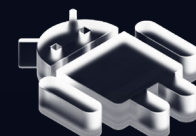
Instant Rewards

Withdraw your rewards in a selection of partnered cryptocurrencies.



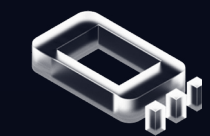
Fuelling MNTx & WMTx

25% of the fees generated are transferred to WMTx & MNTx.



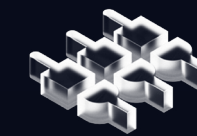
Simple Installation

Unetwork is compatible with most Android & iOS mobile devices.



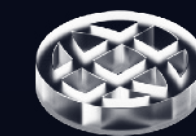
Switch Nodes

Switch Nodes manage the initiation & routing of calls across the global telecom grid.



Validation Nodes

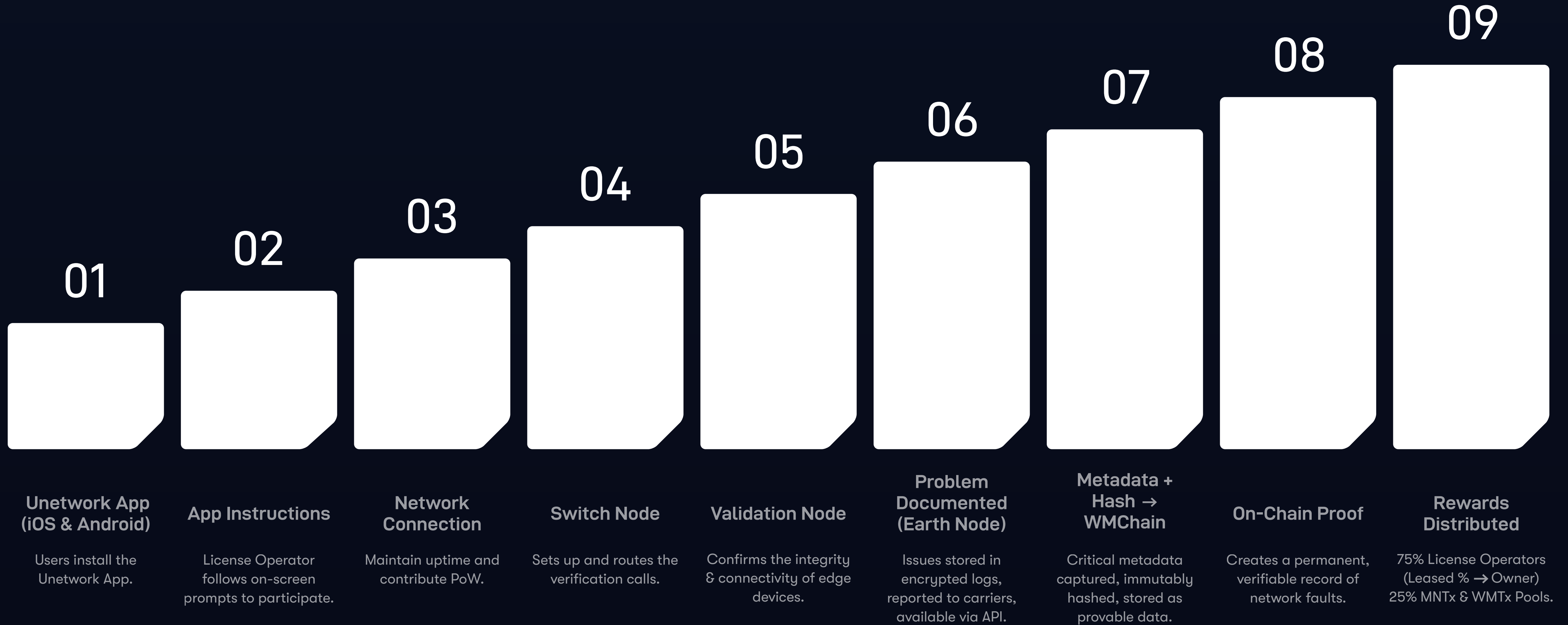
Validation Nodes confirm the integrity & connectivity of the edge mobile devices.



Earth Nodes

Detected issues are logged, encrypted, & auto-reported by Earth Nodes, with API access.

Unetwork Operational Flow



Unetwork Carrier Fee Sharing

Carrier Fees generated by the decentralised verification of the telecom grid, integrity testing & issue identifications.

25% MNTx & WMTx Reward Pools

75% Unetwork License Operators

X%



Leased Licenses Rewards share

Unetwork Node Operators

Earn rewards in multiple payment methods including specific crypto currencies for contributing to grid verification. If a Unetwork License is leased, a set percentage of the rewards generated by those License Operators flows back to the Node Operator who owns the license.

Unetwork Node Operators get rewarded from leased Unetwork License Operators.

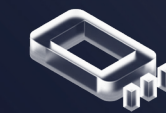


Governance & Transparency

- Unetwork operates under Hong Kong law - Companies Ordinance (Cap 622), Securities and Futures Ordinance (Cap 571) and AMLO (Cap 615).
- Data handling follows the Personal Data (Privacy) Ordinance & GDPR equivalents. Only anonymized data is processed; no PII is stored.

Architecture Overview

Unetwork's infrastructure is composed of three interoperable layers designed for transparency, resilience, and scale. The MNTx & WMTx sharing economies.



Switch Nodes

Route & timestamp telecom packets, creating verifiable event trails that anchor each verification in time.



Validation Nodes

Verify signal integrity, eliminate anomalies, & prevent fraudulent activity within the data stream.



Earth Nodes

Aggregate validated data, encrypt results, & provide API access to authorised carriers, regulators, & enterprise clients.

Each layer functions autonomously but connects through the Unetwork protocols managed by Unity Network Limited (Hong Kong). Together they form a composable framework capable of supporting all compatible regions and operator networks.



More Utility. More Proof. More Rewards.

Unetwork is a composable, people-powered, global Edge Network.

