

LIEN CHYAL GROUP

廉喬集團

創新 INNOVATION
效率 EFFICIENCY
改變 TRANSFORMATION



design by design-cc.com



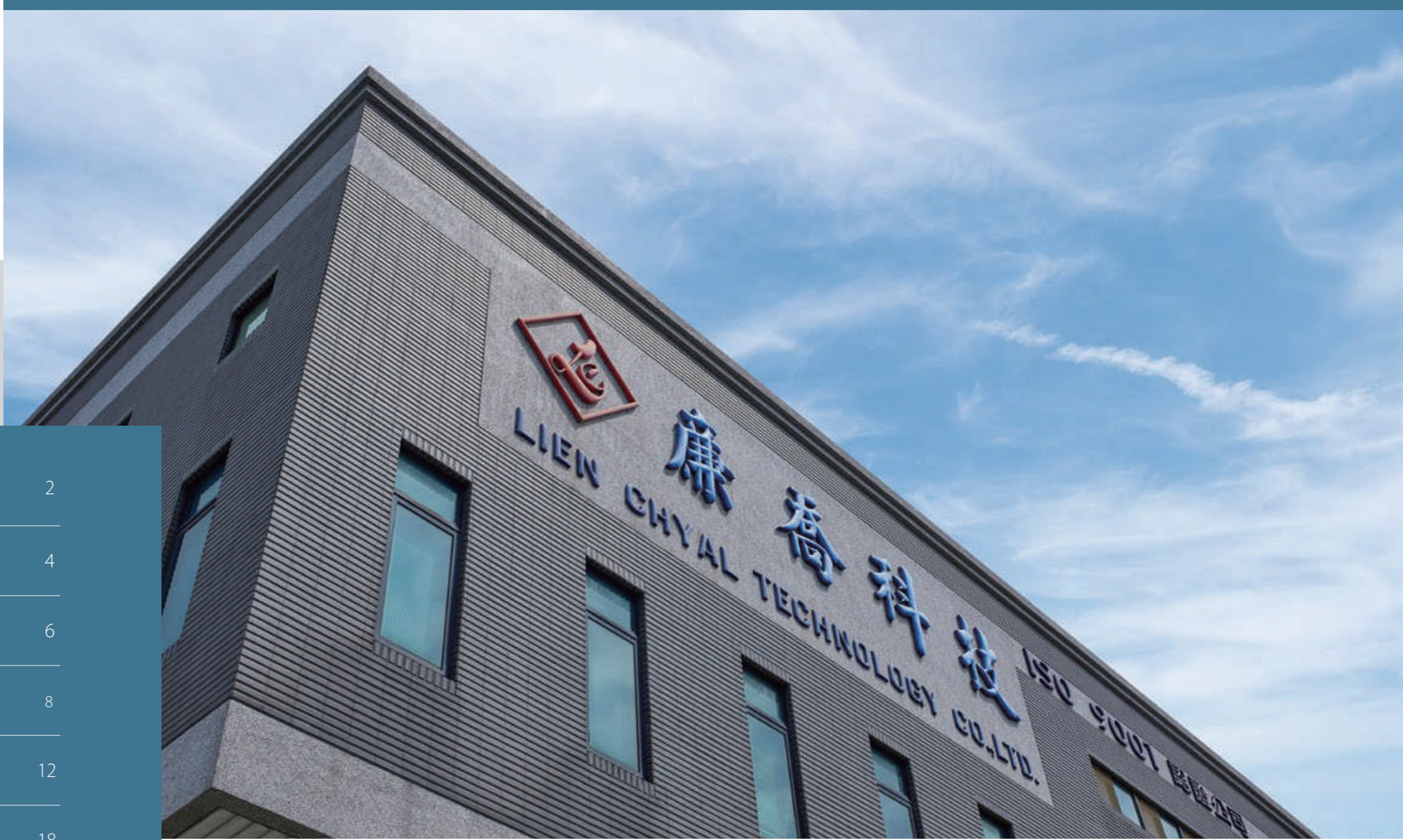
廉喬金屬股份有限公司
LIEN CHYAL GROUP.

333桃園市龜山區萬壽路二段438號 No. 438, Sec. 2, Wanshou Rd., Guishan Dist., Taoyuan City 333, Taiwan (R.O.C.)
T 03-329 1212 F 03-329 5656 / 03-350 9785 E lcweb@lienchyal.com

www.lienchyal.com

ISO9001

INDEX



The Group's Timeline	2
Marketing Network	4
Lien Chyal Group	6
Lien Chyal Metal	8
Hong Yi Enterprise Inc.	12
Lien Ding Technology	18
Ray-Bridge Technology, Japan.	20
Hong Ho Chyal Automation, China.	22
Lien Yang Technology	24

FOCUS ON PROFESSIONALISM AND INTEGRITY



CORPORATE HISTORY

Lien Chyal Group Profile.

The Lien Chyal Group started from grinding, and continuously expanded its business world-wide , and developed a number of subsidiaries in the semiconductor, panel, and logistics industries.

For more than 30 years, Lien Chyal have always adhered to the "customers Supremacy" spirit and professional technology, and has made great progress in the world.

1986	1996	1999
Total capital: 10 million NT	Total capital: 30 million NT	Total capital: 160 million NT\$

Founded Lien Chyal Metal Co., Ltd.

Specializing in the production of guide pillars, guide sleeves, special steel, grinding rods and other products .
Major Cooperation with Shimamura Special Seiko Co., Ltd. Stainless Steel Japan.

Lien Chyal Metal relocated to Taoyuan Guishan headquarters

Expansion of production equipment and integration of production processes to achieve consistent operations.

Established Hong Yi Enterprise Co., Ltd.

It specializes in the agency of various linear motion related products, sells and provides customized processing and transformation.

2003	2005	2010
Total capital: 220 million NT	Total capital: 280 million NT	Total capital: 600 million NT\$

Established in Dongguan, China Lien Chyal Hardware Products Co., Ltd.

Specializing in the manufacture of various hardware parts in China and overseas regions.

Established Lien Ding Technology Co., Ltd.

It specializes in the production and manufacture of spare parts for automatic conveying equipment, and provides planning and construction services for the entire plant.

Yong Yu Steel Frame Engineering Co., Ltd.

Offering professional plant leasing and warehousing.

2016	2017	2019
Amount of independent capital: 10 million JPY	Amount of independent capital: 1.2 million USD	Amount of independent capital: 60 million NT\$

Joint venture with Japanese PIC Corporation Ray-Bridge Industrial Co., Ltd.

Trading of equipment and goods.

Kunshan Hong Ho Chyal Automation Technology Co., Ltd.

Maker of every OEM equipment and parts.

Established Lian Yang Technology Co., Ltd.

Design and manufacture of semiconductor parts, CNC turning, and various mechanical components.

Marketing Network

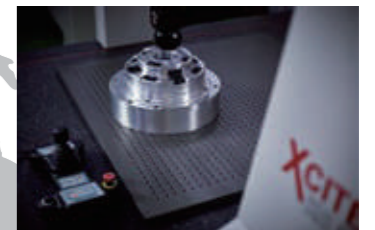
North America
10.00 %
Revenue / year



Europe
7.00 %
Revenue / year



ASIA
83.00 %
Revenue / year



Distribution of the Group Locations

Headquartered in Taiwan, with Asia as our core market and the world as our ultimate goal.

Lien Chyal Group is headquartered in Taoyuan City, Taiwan, with two service locations and factories in Dongguan and Kunshan, China, and an office in Chiba City, Japan. Lien Chyal Group's geographical advantage enables the Group to stay close to customers and flexibly plan production capacity to responding to various customer needs.

ASIA

Taiwan	38.80%
Japan	14.00%
China	26.00%
Singapore	1.20%
other	3.00%

NORTH AMERICA

USA	6.00%
Canada	4.00%

EUROPE

Germany	3.00%
Italy	2.00%
other	2.00%



Quality Certification

Quality is the highest principle

Lien Chyal goods are based on high quality. Providing the best is the responsibility of every employee. Adhere to our goal of excellence and through constant review reflection and improvement, customizing high-end quality products for valuable clients.

LIEN CHYAL METAL CO., LTD

| Lien Chyal Group

Group summary

- Establishment** : 1986
- Chairman** : Jin-jiao Chen
- General manager** : Jian-an Chen
- CEO** : Ming-jie Chen
- Number of employees** : 300
- Total capital** : 1 billion NTD.
- Headquarter** : No. 438, Sec. 2, Wanshou Rd., Guishan Dist., Taoyuan City 333, Taiwan (R.O.C.)

(As of December 31, 2020)

Management Ideas

Uphold Integrity

The most fundamental and important philosophy for Lien Chyal, when conducting business. Lien Chyal does not simply make promises to customers, but will make every effort to fulfill and deliver the promises we have made.

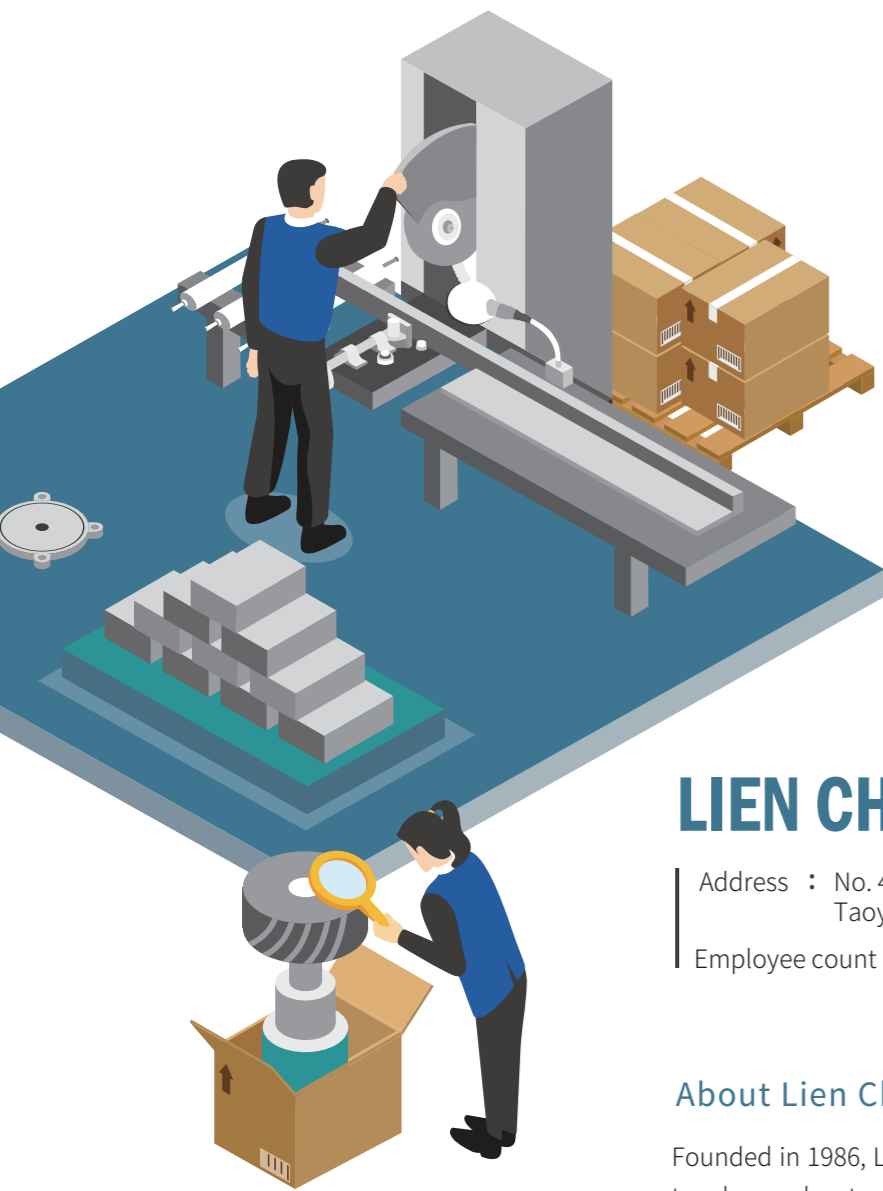
Customers Are Our Partners

Lien Chyal regards customers as our partners, and view customer's success as our own success. We create value for customers and co-create value with customers, thereby working together to achieve the goal of a win-win situation.

In Pursuit of Sustainable Management

A company's sustainable management resembles a marathon, which prompts Lien Chyal to pursue high product quality, innovation and R&D, and also pay attention to the development of employees' professional competencies. Only a stable internal organization can ensure a solid partnership with customers. Besides, Lien Chyal gives back to the society as much as possible, and fulfill corporate social responsibility, in order to achieve the highest goal of sustainable management.





LIEN CHYAL TECHNOLOGY

Address : No. 438, Sec. 2, Wanshou Rd., Guishan Dist.,
Taoyuan City 333, Taiwan (R.O.C.)

Employee count : 160

About Lien Chyal

Founded in 1986, Lien Chyal engages in the research and development of touch panel automation equipment and manufacturing process-related equipment. Lien Chyal provides high-precision touch panel production equipment and various key parts and components, becoming a pioneer in the industry through vertical integration between upstream and downstream sectors.

Business Philosophy

Lien Chyal Metal is proud of our superior quality products, thus earning recognition and high praise from customers. However, we will not be complacent because of such achievements. In order to meet future market demand, we will work harder to continuously develop new technologies, invest in new production equipment with higher efficiency, and further integrate information, technology, and management.



Cutting material



Grinding



Machining



Packing



Delivery



Signature Components :

1. High-purity, high-precision roller set for mass conveyance (UPE, anti-static UPE, conductive UPE roller sets, etc.)
2. Special material roller sets for single process machines, including PEEK, PTFE, PETP, SUS, etc.
3. Parts and components for automatic handling equipment: FORK, linear bearings, modules comprising machining parts.

Waterproof goods:

1. Roller sets for general conveyance.
2. Brush rollers for cleaning equipment.
3. Acid and alkali-resistant composite shaft roller sets
4. Special plastic spindle for single process equipment

Customers Include :

Taiwan - Innolux Corporation, AU Optronics Corp., Eterbright Solar Corporation, HannStar Display Corporation, etc.

China - BOE Technology Group Co., Ltd., Mantix Display Technology Co., Ltd., Shenzhen China Star Optoelectronics Technology Co., Ltd., Nanjing Panda Electronics Co., Ltd., Xianyang Caihong Optoelectronics Techonology Co., Ltd., Century Technology (Shenzhen) Co., Ltd., Chuzhou HKC Optoelectronics Techonology Co., Ltd., etc.



TFT and LCD conveyor drive roller set



TFT and LCD conveyor shaft roller set



Aluminum roller: Hard chrome plating / Hard anodizing / General anodizing / Mirror finish



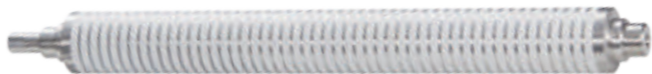
Rubber Roller



Customization Adjustment Roller



Brush Roller



Wafer Transfer Shaft



**CUSTOMER FIRST,
AND PROVIDING FLEXIBLE
SERVICE**



HONG YI ENTERPRISE

Address : No. 438, Sec. 2, Wanshou Rd., Guishan Dist.,
Taoyuan City 333, Taiwan (R.O.C.)

Employee count : 20

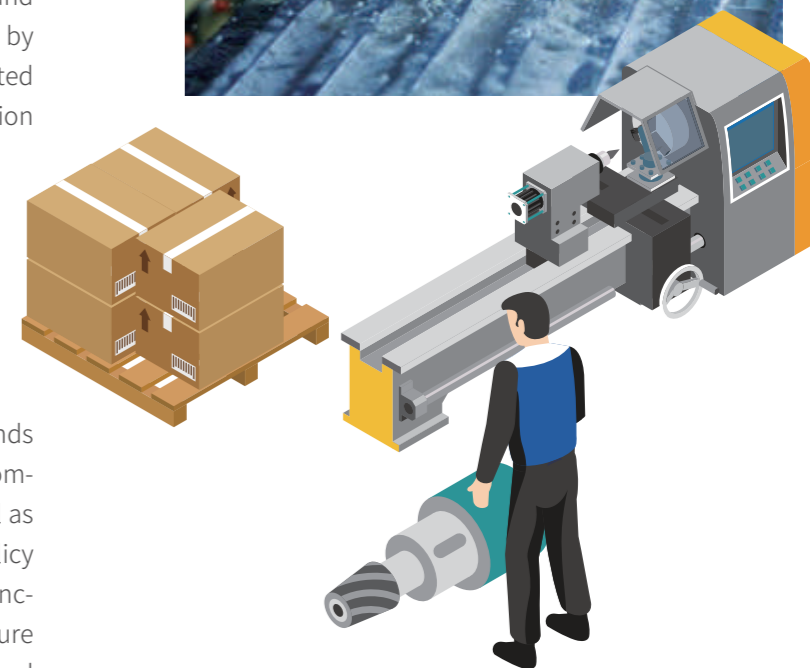
About Hong Yi

Customer First and Flexible Service

Hong-yi Enterprise agent Taiwan's leading brand HIWIN products for diversified development and operation, supplying different products required by customers in various fields. The team is committed to the extension and expansion of transmission components.

Integrity, Quality, Innovation and Service

Hong-Yi Enterprise specializes in the sale of all kinds of linear motion-related products, provides customized modification and machining services, as well as implement, execute and realize high-quality policy by improving constantly and continuously enhancing the quality of customer service. To meet future demands, we will apply top notch technologies and moving forward in order to achieve the goal of sustainable business management.





Ball Screw:

Ball screw is the most commonly used drive component in machine tools, as well as IT, optoelectronics, semiconductor, medical and automation precision equipment, and its main function is to convert rotational motion into linear motion or to convert torque into axial force. Besides, it has both high precision and high efficiency.

Slide Rail:

Linear slide rail is a type of rolling guide. As the method of friction on a linear slide rail is rolling friction, the friction coefficient is reduced to 1/50 that of a sliding guide, and slipping does not happen. Its special structural design allows it to withstand loads in upward, downward, leftward and rightward directions, and achieve high positioning accuracy.

Slide Module:

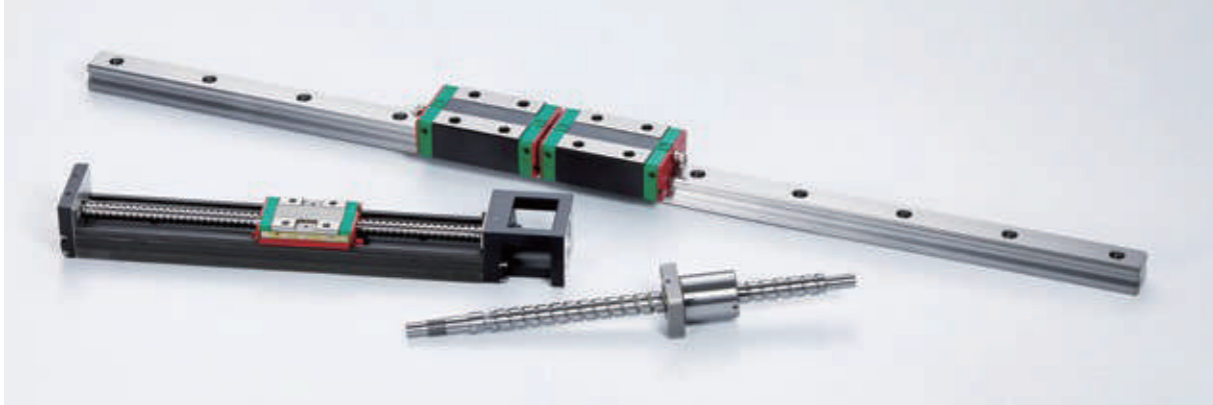
It is used together with HIWIN ball screw and linear slide rail, and has several features, including easy to install, small in size, and high precision.

Screw Support Stand:

It is used together with HIWIN ball screws for high smoothness and high precision.

Position Measurement System:

It is a high-precision magnetizing system which is used together with various measuring systems to meet precision requirements of various inspections. The measuring body is not easily affected by harsh environments, including oil, water, and chips.



Single Axis Robot



Linear Guideway



BallScrew



Datorker Robot Reducer



TMS Torque Motor Rotary Table



Angular bearings



AC servo Drives



Support Unit



Support Unit



Single Axis Robot RP Series(Rack And Pinon)



Linear Actuator:

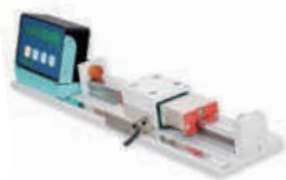
It is a linear motion device which is driven by electric power in replacement of conventional oil pressure and cylinder. Electric power is supplied by a controller to generate a push-pull action. Features: Easy to install, small in size, lightweights, and easy to operate.

Linear Motor:

Thrust generated using the mutual interaction of current and magnetic field in the motor, coupled with the use of its magnet arrangement and multiple rotors, can realize unlimited travel and the independent motion of multiple single-axis rotors. Together with precision servo feedback, a linear motor can realize high positioning accuracy control.



Single Axis Robot KC Series



Positioning Measurement System



Linear Synchronous Motor



Ball Spline



AC-synchronous Motor



Crossed Roller Bearings



Linear Motor X-Y Robot



Support Unit



Linear Actuator

LIEN DING TECHNOLOGY



Address : No. 438, Sec. 2, Wanshou Rd., Guishan Dist.,
Taoyuan City 333, Taiwan (R.O.C.)

Employee count : 10

About Lien Ding

In 2012, Lien Ding obtained the patent for special cutting of metal sheet, which has been applied to metal sheet processing technologies, such as cutting and forming of small metal sheet for automotive electronics, aluminum sheet processing for panel equipment, LED light bar forming, etc.



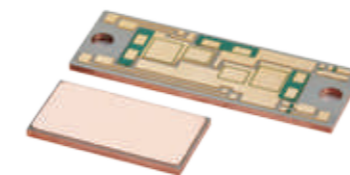
Product Information



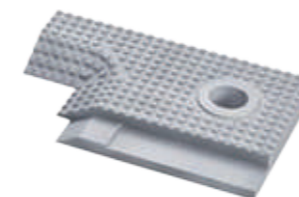
Boat



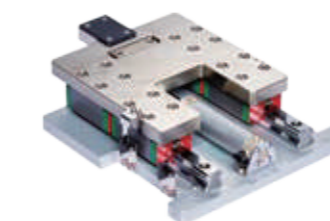
LED light bar



Copper Substrate



Mask



Support Unit

RAY BRIDGE INTERNATIONAL



Address information :

〒 263-0002
千葉県千葉市稲毛区
山王町 404-35
株式会社 IPC 千葉工場

Employee count : 8

About Ray Bridge

Ray Bridge International Ltd. is committed to offering trading services in Asia. The company team possesses extensive domestic and foreign industry information and experience, and provides customers in various areas with a wide range of choices through information sharing.



Current services :

AU Optronics Corp, Sumitomo Corporation, Leadtech, IPC, Tsubaki Seiko Inc., etc.



Product Information

- | | |
|---|--|
| 1. Sale and remodeling of Heater | 6. Buffer |
| 2. Anilox roll (Laser-engraved ceramic roller) | 7. Machining parts (Fluorine) |
| 3. Conveyor Roller (can be designed and customized) | 8. Others (sale of various types of consumables) |
| 4. Uni ball | 9. Equipment OEM production management |
| 5. Heating Plate | 10. Equipment OEM |

G8.5 Resin Channel Roll Brush

The combination Applicable to G7 and above mother glass for TFT-LCD panel cleaning. CFRP shaft + Lightweight of resin ChANNEL+ dynamic balance adjustment can effectively improving cleaning effect.

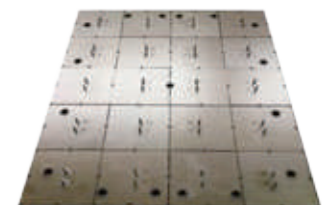
Applicable to mother glass for TFT-LCD panel cleaning. It complies with Japanese Industrial Standard JIS-0905 Rotating Machines, which balances quality requirements of rotors. Not only is shaft made and adjusted according to customer's requirements, but also the overall balance of the brush.



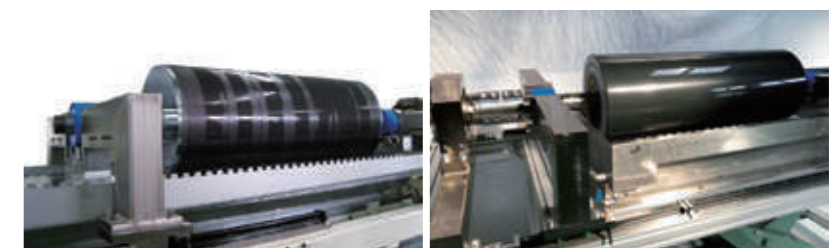
OEM (Original Equipment Manufacturer)



Heater Plate



Ultrasonic Cleaning Roller





HONG HO CHYAL AUTOMATION TECHNOLOGY

Address : South of Building A-2, No. 111 Nanxun Road, Yushan Town,
Kunshan City, Jiangsu Province
Employee count : 25

About Hong Ho Chyal

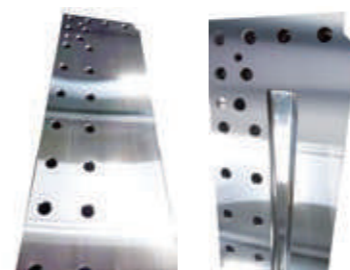
Founded in 2017, Kunshan Hong Ho Chyal Automation Technology Co., Ltd. is the second location established by Lien Chyal in China. The company continues the Group's high-quality and high-efficiency spirit by providing customers with services, such as traditional manufacturing, production of roller and drive sets for conveyor equipment and optoelectronics automation equipment, as well as comprehensive after-sale service, in order to meet customer needs.

Customers include:

Chuzhou HKC Optoelectronics Technology Project, and Guangdong Shenzhen 817 Project...



Product Information



Board factory parts repair

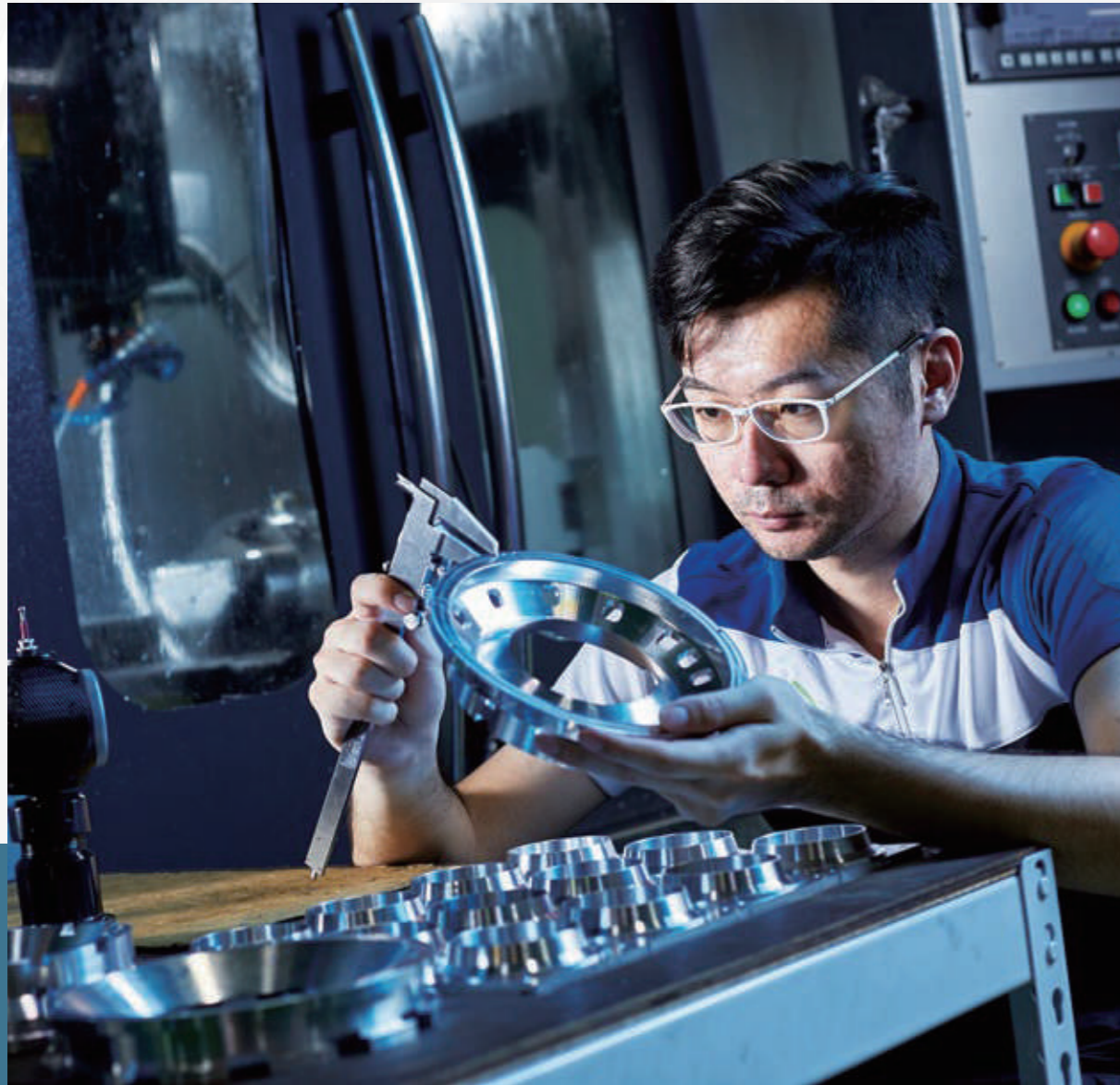


equipment parts



Automatic production line planning

WE ARE COMMITTED TO THE ULTIMATE

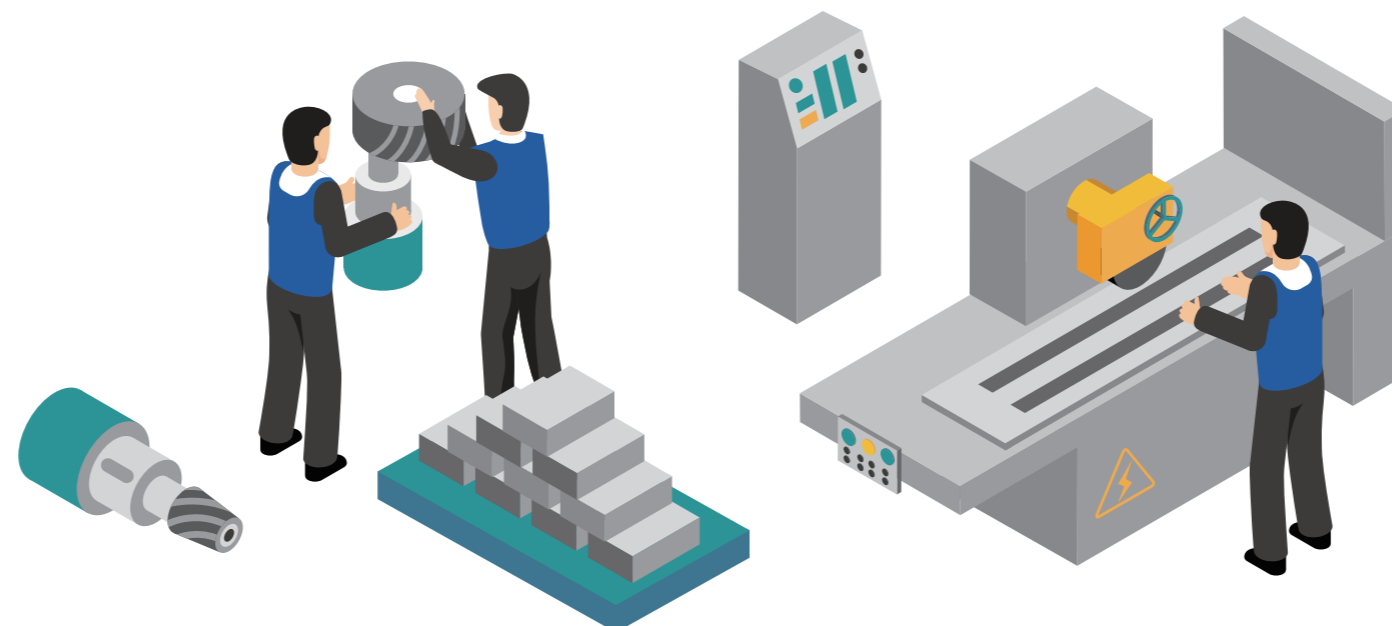


LIEN YANG TECHNOLOGY

Address : No. 65, Ln. 528, Heping Rd., Bade Dist., Taoyuan City 334, Taiwan (R.O.C.)

Employee count : 10

Factory area : 10677 square meters.



About Lien Yang

Founded in 2018, Lien Yang Technology Co., Ltd. engages in the manufacture of professional parts using precision CNC machines, and is equipped with four-axis machining and precision testing equipment.

Produced Items:

Precision components required for industrial equipment, such as IC packaging and testing, semiconductor, optoelectronic and electronic components

Quality Certification:

August 2018 :

Successfully obtained qualified supplier certification from Shihlin Electric

October 2018 :

Successfully obtained qualified supplier certification from Mirle Automation Corp.

December 2018 :

Successfully obtained qualified supplier certification from controlTechnology Co., Ltd.

June 2019 :

Successfully obtained qualified supplier certification from Airtech System Co., Ltd.

September 2019 :

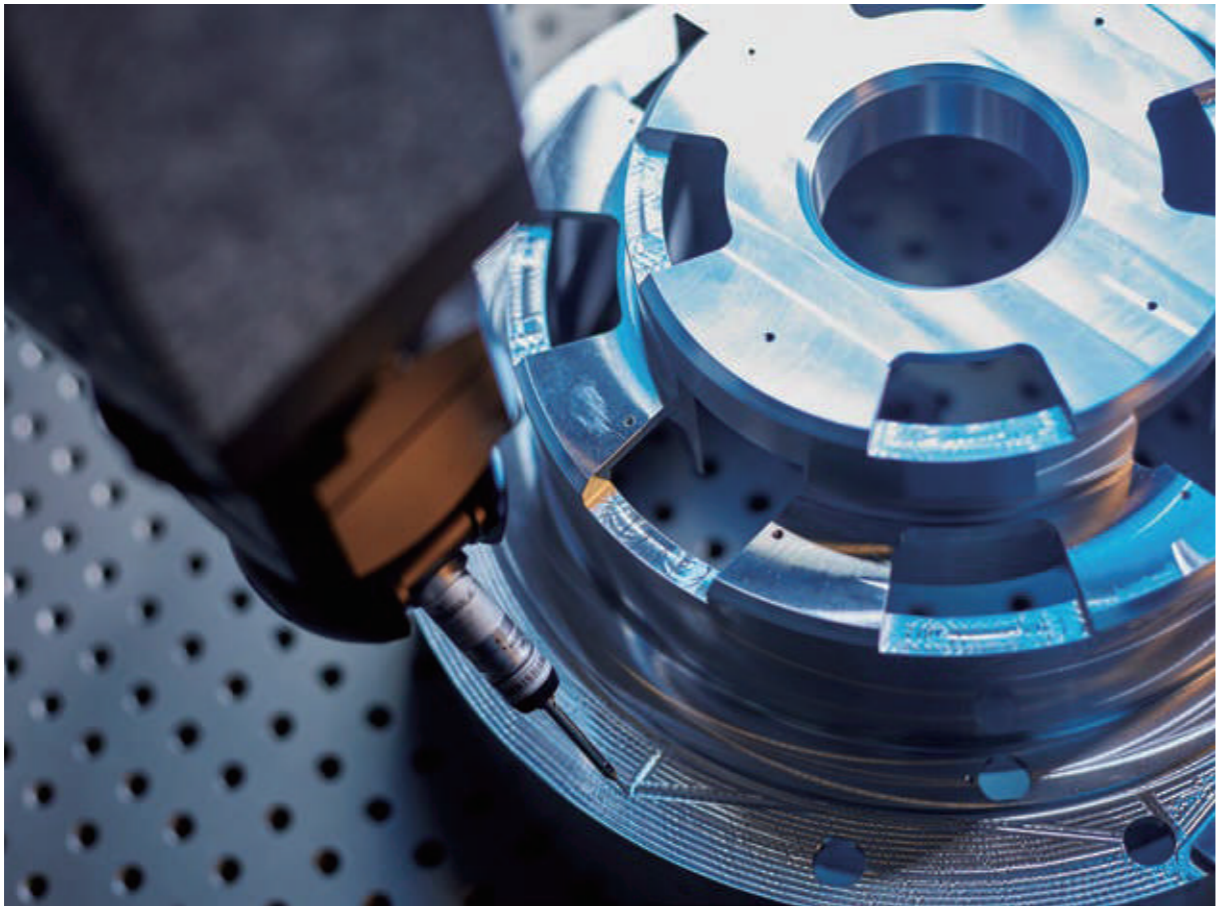
Successfully obtained ISO 9001 and 14001 certification



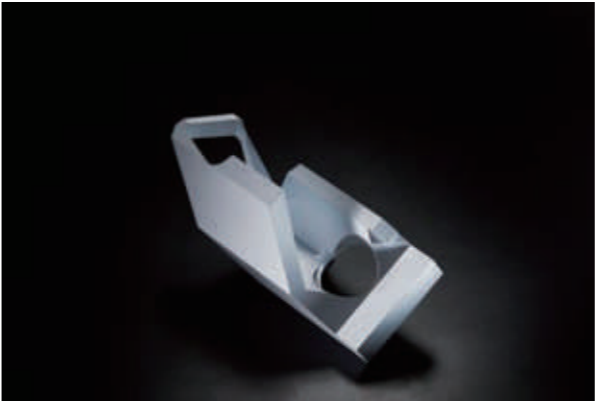


Product Information

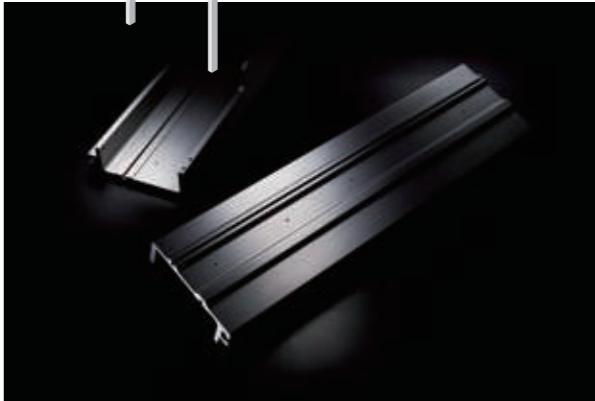
- 1. Lamp Holder Optics .
- 2. Mirror Mount.
- 3. Semiconductor Device Components.
- 4. Air-Spearating Plate.
- 5. Brush Roller Block (Module).



Lamp Holder Optics



Mirror mount



Semiconductor device components



Air-Spearating Plate



Brush Roller Block (Module)

