

ALUMINUM STEEL STAINLESS STEEL

PRECISION ROLL SOLUTIONS



MILERTech

ALUMINUM IDLER ROLLER

Millertech offers various Aluminum Idler roller configurations to match the requirements of any application. Aluminum Idler roller provides exceptional performance while possessing nearly half the weight of steel. We provide Lightweight and Seamless Lightweight tubes. Each Aluminum roller is configured as a dead shaft or live shaft model depending on the application specifications.

Aluminum rollers are suitable for most common applications, offering a lightweight, low inertia solution. These popular rollers are all statically and dynamically balanced to meet or exceed the customer's application requirements, and machined to precision tolerances for minimal run-out and then polished for a smooth surface finish.

Lightweight Aluminum

Lightweight aluminum rollers are ideal for lighter tension applications and less rotational inertia is important.

Seamless Lightweight Aluminum

Seamless Lightweight aluminum rollers are ideal for greater tension applications where deflection is very important.

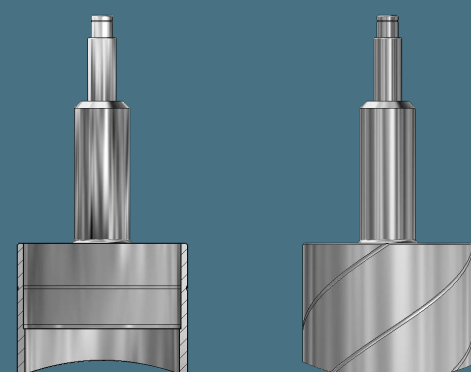
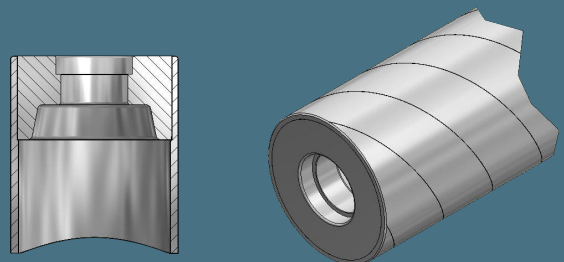
TYPE OF ALUMINUM IDLER ROLLER

Dead Shaft Advantage

- The roller rotates using special bearing on a fixed inner shaft.
- Lower Rolling Inertia, since the roll body is the only rotating object on an idler, the rolling inertia is much less than a live shaft roll.

Live Shaft Advantage

- Elevated Temperatures
- Quicker Bearing Replacement
- Higher Allowable Loads
- Drive Rolls shaft roll



CUSTOMISED MACHINED SURFACES

Surface

Application

MicroGroove(MG)

- Sensitive web without marking
- Minimize web slippage

Diamond Knurl (KN)

- Excellent for entrapped air removal
- Excellent web tracking
- Sensitive web without marking

Herringbone Groove(HB)

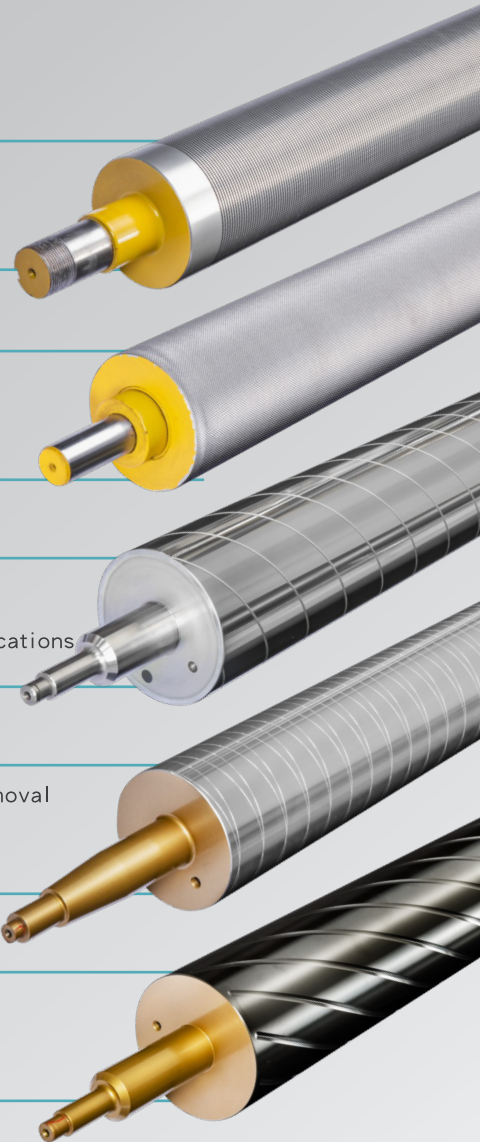
- Classic wrinkle removal method
- Preferred for use with light foil applications

Spiral "V" Groove (SG)

- Industry standard for entrapped air removal
- For light web at high speed
- Minimize web slippage

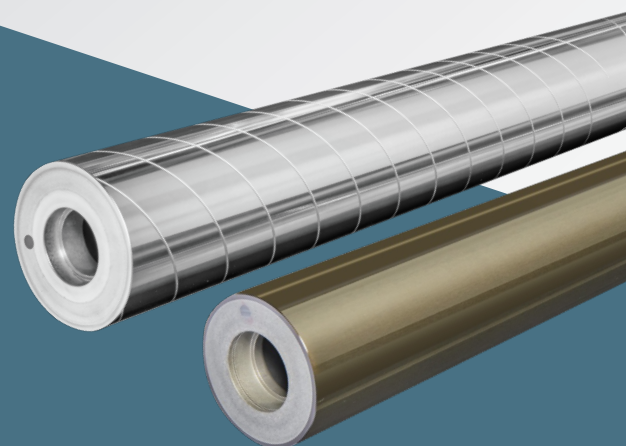
ChevronGroove(CG)

- For wrinkle removal
- For soft web



CUSTOMISED COATING & PLATING

- Chrome Plating
- Anodize
- Hardcoat Anodize
- Teflon coated
- Sandblasting
- Rubber coated
- Cork tape





STEEL AND STAINLESS STEEL ROLLERS

Steel idlers offer high strength and performance in applications with wide webs, fast line speeds and high web tension. Steel rollers have a higher critical speed than aluminum rollers, but they are heavier with greater rotational inertia.

All steel and stainless steel rollers are dynamically balanced and machined to precision tolerances for minimal run out and then polished for a smooth surface finish.

Standard Steel

- Three times the stiffness of aluminum rolls.
- Higher tensile strength and surface hardness than aluminum

Stainless Steel

- All of the same characteristics as steel, with superior corrosion and abrasion resistance.
- Well-suited for food and medical applications.

MILLERTECH

Millertech Co.,Ltd

ADD: No. 12-6, 33rd Rd., Taichung
Industrial Park, Taichung 407, Taiwan

www.millertech.com.tw

TEL: +886-4-23580939

FAX: +886-4-23580976

