

C80D -YL10 - S800 - M2 - M 100W - B

型號 Model 孔型與導程 Hole type and Lead 行程 Stroke 馬達方向 Motor direction 馬達廠牌及出力 Motor brand and output 煞車 Brake

Y 底部牙孔
Thread hole

馬達方向 Motor direction

- M1 馬達內置 Motor inside position
- M2 馬達外置 Motor outside position
- M3 馬達外置右側 Motor outside, rightward position
- M4 馬達外置左側 Motor outside, leftward position
- M5 馬達外置上方 Motor outside, upper position
- M6 馬達外置下方 Motor outside, lower position

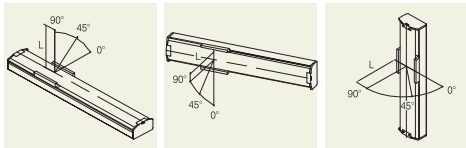
馬達廠牌及出力 Motor brand and output

- H 上銀 Hiwin
- X 西門子 Siemens
- M 三菱 Mitsubishi
- Y 安川 Yaskawa
- P 松下 Panasonic
- F 富士 Fuji
- T 台達 Delta

C80D規格表(C80D Specification):

馬達出力 AC Servo motor output(W)	100W				
重覆定位精度 Repeatability(mm)	±0.01				
滾珠螺桿外徑 B.S(Ø)	16	16	16	16	
滾珠螺桿導程 Lead(mm)	5	10	16	20	
最快速度 Maximun speed(mm/sec)	250	500	800	1000	
最大載重 Maximun payload(kg)	水平使用 (H)	35	25	15	10
	垂直使用 (V)	13	9	5	4
額定推力 Rated thrust(N)	300	150	85	75	
行程 Stroke(mm)	100~1050 50 間隔 (interval)				

線性滑軌15x12. 5-1支 (Linear Guide 15x12.5-1)

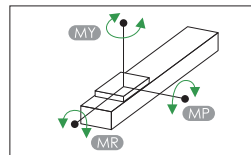


水平安裝應用 (單位:mm)				牆面安裝應用 (單位:mm)				垂直安裝應用 (單位:mm)						
Horizontal use				Wall installation use				During vertical use						
導程	荷重 Payload	0°	45°	90°	導程	荷重 Payload	0°	45°	90°	導程	荷重 Payload	0°	45°	90°
Lead 20	4kg	170	235	598	Lead 20	4kg	266	77	75	Lead 20	1kg	273	193	273
	7kg	77	121	321		7kg	139	33	22		2kg	127	80	127
	10kg	35	39	176		10kg	25	0	0		3kg	31	0	31
Lead 16	4kg	212	300	766	Lead 16	4kg	380	128	106	Lead 16	1kg	455	321	455
	9kg	109	151	401		9kg	198	50	31		2kg	212	133	212
	15kg	43	48	220		13kg	35	0	0		4kg	52	10	52
Lead 10	14kg	70	112	375	Lead 10	10kg	502	247	120	Lead 10	3kg	366	207	366
	21kg	35	42	217		16kg	189	115	71		6kg	141	42	141
Lead 05	25kg	0	0	98	Lead 05	20kg	52	7	0	Lead 05	9kg	38	0	58
	25kg	0	0	226		15kg	313	160	94		5kg	285	167	285
	30kg	0	0	103		21kg	154	33	0		10kg	129	25	166
	35kg	0	0	21		25kg	15	0	0		13kg	10	0	42

*滑塊表面中心到搬送物重心的距離 (僅供參考)

Distance center of slider top to center of gravity of object being transported (For reference only)

靜態容許負載慣量
Stic Loading Moment

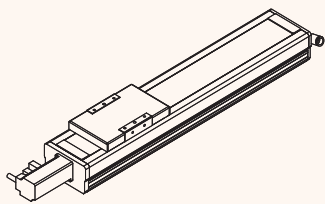


(單位:N.m) (Unit:N.m)
水平使用時 Static Loading Moment

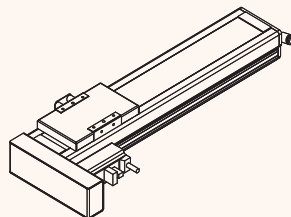
MY	95
MP	95
MR	100

"此款型號不建議當多軸負載軸"

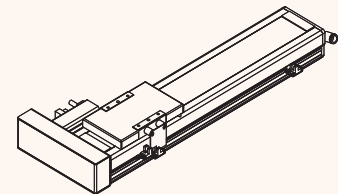
This model suggest not be used as load axis of multi axes.



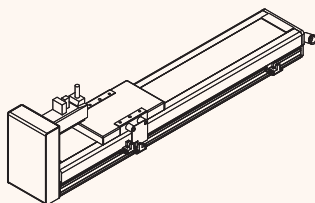
M2



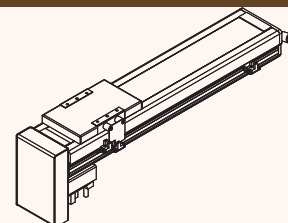
M3



M4

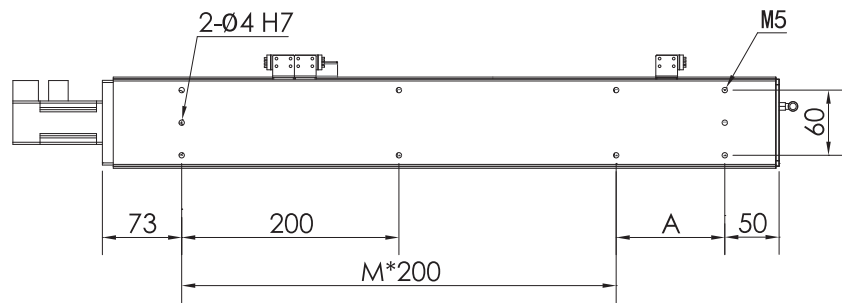
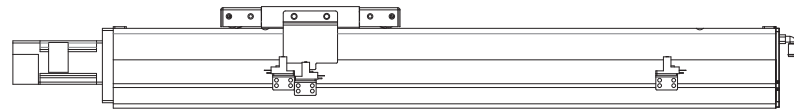
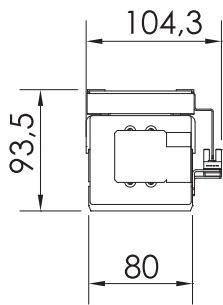
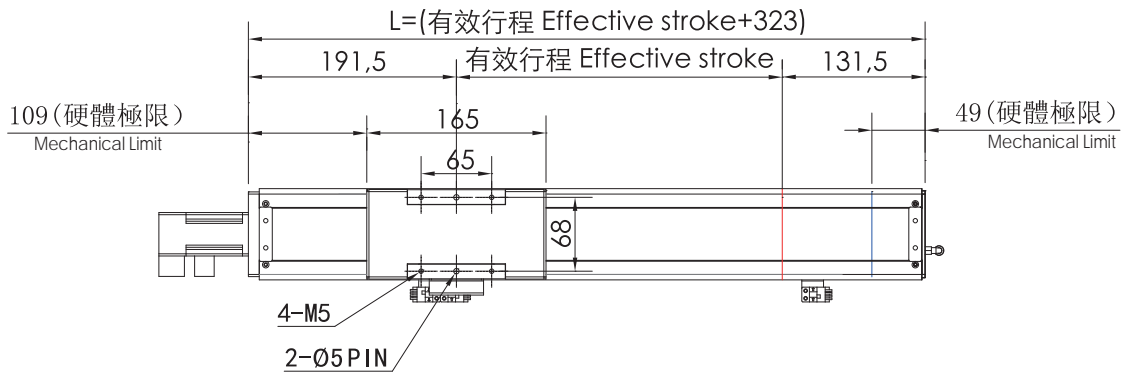


M5



M6

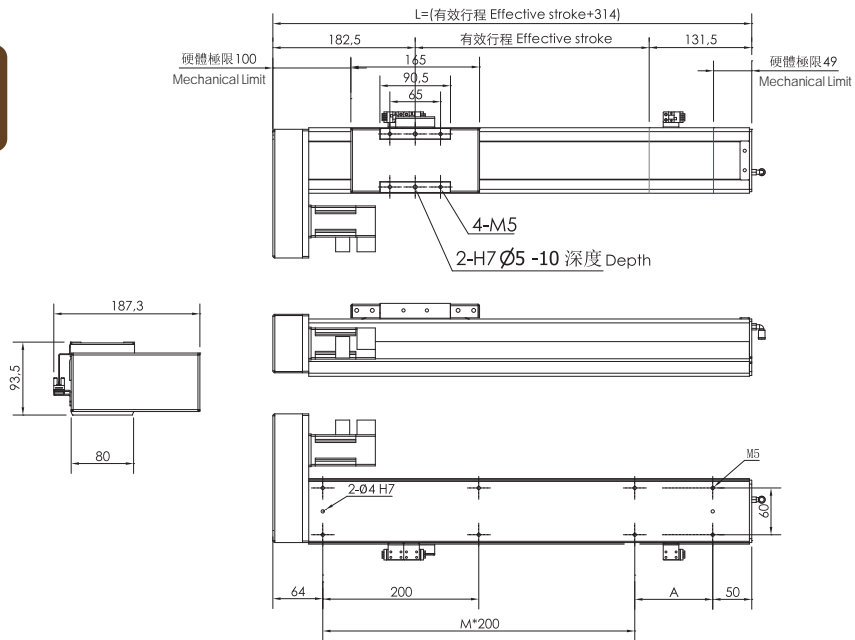
M2



行程 Stroke	100	150	200	250	300	350	400	450	500	550	600	650	700	750	800	850	900	950	1000	1050
L	423	473	523	573	623	673	723	773	823	873	923	973	1023	1073	1123	1173	1223	1273	1323	1373
A	100	150	200	50	100	150	200	50	100	150	200	50	100	150	200	50	100	150	200	50
M	1	1	1	2	2	2	2	3	3	3	3	4	4	4	4	5	5	5	5	6
N	6	6	6	8	8	8	8	10	10	10	10	12	12	12	12	14	14	14	14	15
重量(kg)	4.3	4.8	5.3	5.8	6.3	6.8	7.3	7.8	8.3	8.7	9.3	9.8	10.3	10.8	11.3	11.8	12.3	12.8	13.3	13.8

※本公司享有變更規格之權益，恕不另行通知 ※Drawings and specifications are subject to change without prior notice.

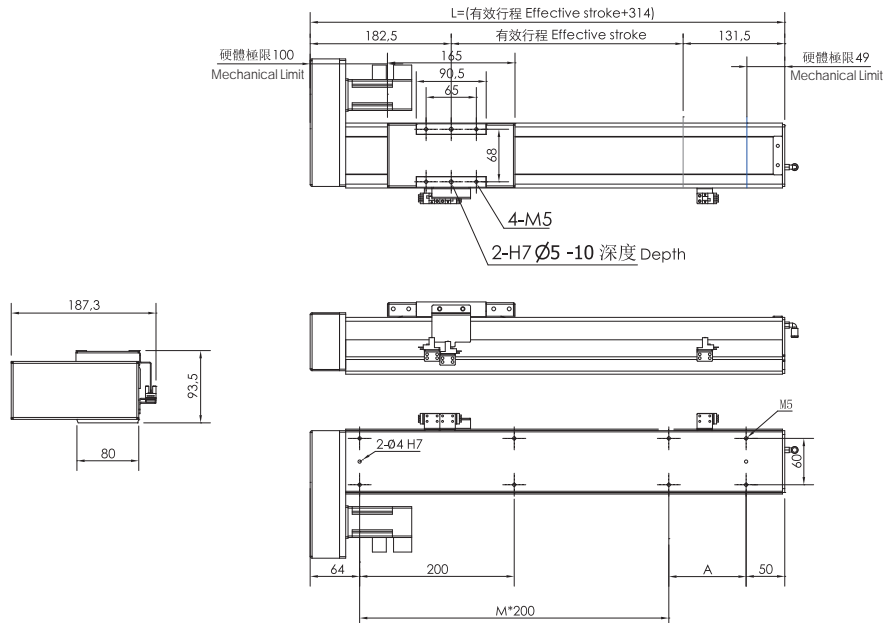
M3



行程 Stroke	100	150	200	250	300	350	400	450	500	550	600	650	700	750	800	850	900	950	1000	1050
L	414	464	514	564	614	664	714	764	814	864	914	964	1014	1064	1114	1164	1214	1264	1314	1364
A	100	150	200	50	100	150	200	50	100	150	200	50	100	150	200	50	100	150	200	50
M	1	1	1	2	2	2	2	3	3	3	3	4	4	4	4	5	5	5	5	6
N	6	6	6	8	8	8	8	10	10	10	10	12	12	12	12	14	14	14	14	15
重量(kg)	5.1	5.4	5.7	6.0	6.3	6.6	6.9	7.2	7.5	7.8	8.1	8.4	8.7	9.0	9.3	9.6	9.9	10.2	10.5	10.8

※本公司享有變更規格之權益，恕不另行通知 ※Drawings and specifications are subject to change without prior notice.

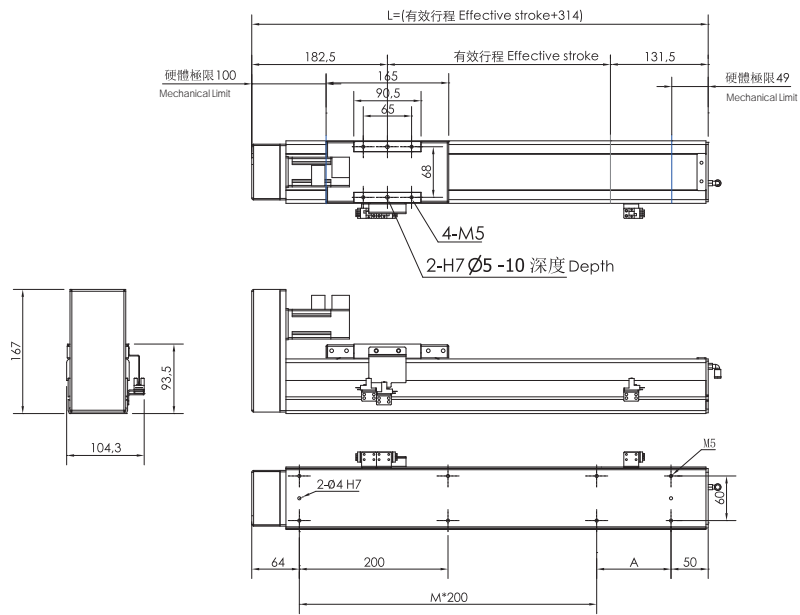
M4



行程 Stroke	100	150	200	250	300	350	400	450	500	550	600	650	700	750	800	850	900	950	1000	1050
L	414	464	514	564	614	664	714	764	814	864	914	964	1014	1064	1114	1164	1214	1264	1314	1364
A	100	150	200	50	100	150	200	50	100	150	200	50	100	150	200	50	100	150	200	50
M	1	1	1	2	2	2	2	3	3	3	3	4	4	4	4	5	5	5	5	6
N	6	6	6	8	8	8	8	10	10	10	10	12	12	12	12	14	14	14	14	15
重量(kg)	5.1	5.4	5.7	6.0	6.3	6.6	6.9	7.2	7.5	7.8	8.1	8.4	8.7	9.0	9.3	9.6	9.9	10.2	10.5	10.8

※本公司享有變更規格之權益，恕不另行通知 ※Drawings and specifications are subject to change without prior notice.

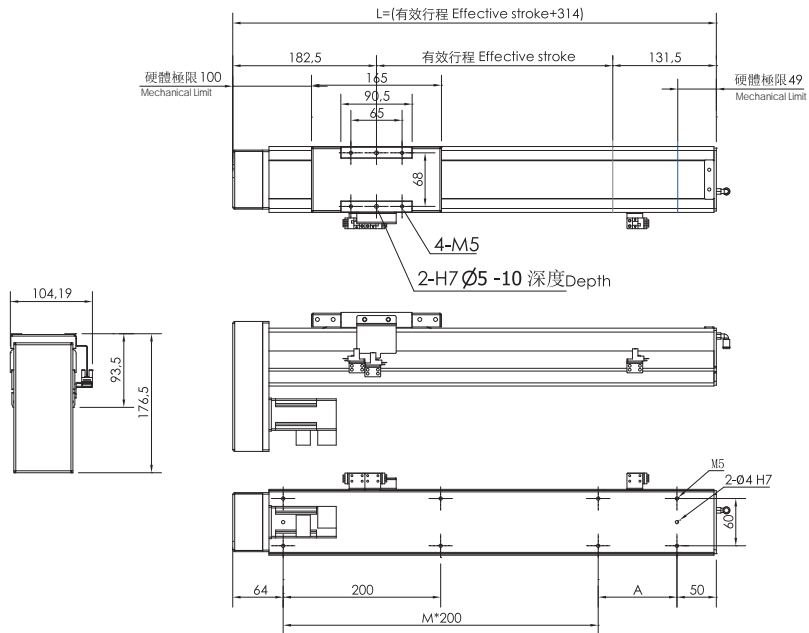
M5



行程 Stroke	100	150	200	250	300	350	400	450	500	550	600	650	700	750	800	850	900	950	1000	1050
L	414	464	514	564	614	664	714	764	814	864	914	964	1014	1064	1114	1164	1214	1264	1314	1364
A	100	150	200	50	100	150	200	50	100	150	200	50	100	150	200	50	100	150	200	50
M	1	1	1	2	2	2	2	3	3	3	3	4	4	4	4	5	5	5	5	6
N	6	6	6	8	8	8	8	10	10	10	10	12	12	12	12	14	14	14	14	15
重量(kg)	5.0	5.3	5.6	5.9	6.2	6.5	6.8	7.1	7.4	7.7	8.0	8.3	8.6	8.9	9.2	9.5	9.8	10.1	10.4	10.7

※本公司享有變更規格之權益，恕不另行通知 ※Drawings and specifications are subject to change without prior notice.

M6



行程 Stroke	100	150	200	250	300	350	400	450	500	550	600	650	700	750	800	850	900	950	1000	1050
L	414	464	514	564	614	664	714	764	814	864	914	964	1014	1064	1114	1164	1214	1264	1314	1364
A	100	150	200	50	100	150	200	50	100	150	200	50	100	150	200	50	100	150	200	50
M	1	1	1	2	2	2	2	3	3	3	3	4	4	4	4	5	5	5	5	6
N	6	6	6	8	8	8	8	10	10	10	10	12	12	12	12	14	14	14	14	15
重量(kg)	5.0	5.3	5.6	5.9	6.2	6.5	6.8	7.1	7.4	7.7	8.0	8.3	8.6	8.9	9.2	9.5	9.8	10.1	10.4	10.7

※本公司享有變更規格之權益，恕不另行通知 ※Drawings and specifications are subject to change without prior notice.