

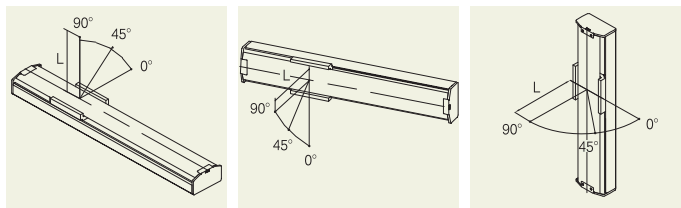
## 100D - TL10 - S1050 - M1 - M 100W - B

型號 Model	孔型與導程 Hole type and Lead	行程 Stroke	馬達方向 Motor direction	馬達廠牌及出力 Motor brand and output	煞車 Brake
	T 底部通孔 Through hole Y 底部牙孔 Thread hole	馬達方向 Motor direction M1 馬達內置 Motor inside position M2 馬達外置 Motor outside position M3 馬達外置右側 Motor outside, rightward position M4 馬達外置左側 Motor outside, leftward position M5 馬達外置上方 Motor outside, upper position M6 馬達外置下方 Motor outside, lower position		馬達廠牌及出力 Motor brand and output H 上銀 Hiwin X 西門子 Siemens M 三菱 Mitsubishi Y 安川 Yaskawa P 松下 Panasonic F 富士 Fuji T 台達 Delta	

### 100D規格表(100D Specification):

馬達出力 AC Servo motor output(W)	100W				
重覆定位精度 Repeatability(mm)	±0.01				
滾珠螺桿外徑 B,S(Ø)	16	16	16	16	
滾珠螺桿導程 Lead(mm)	5	10	16	20	
最快速度 Maximun speed(mm/sec)	250	500	800	1000	
最大載重 Maximun payload(kg)	水平使用 (H)	50	35	25	20
	垂直使用 (V)	15	10	8	5
額定推力 Rated thrust(N)	300	150	85	75	
行程 Stroke(mm)	100~1050 50 間隔 (interval)				

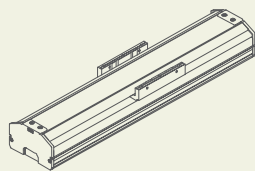
### 線性滑軌12x8-2支 (Linear Guide 12x8-2)



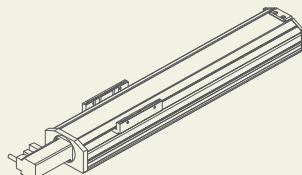
水平安裝應用 (單位:mm) Horizontal use					牆面安裝應用 (單位:mm) Wall installation use					垂直安裝應用 (單位:mm) During vertical use						
導程 Lead	荷重 Payload	0°	45°	90°	導程 Lead	荷重 Payload	0°	45°	90°	導程 Lead	荷重 Payload	0°	45°	90°		
Lead 20	5kg	385	407	629	Lead 20	3kg	462	228	179	Lead 20	1kg	546	441	570		
	10kg	110	179	381		Lead 20	7kg	289	94		76	Lead 20	3kg	375	243	391
	20kg	63	98	230			Lead 20	10kg	211		55		39	Lead 20	5kg	123
Lead 16	10kg	155	242	425	Lead 16	5kg		477	140	123	Lead 16	3kg	413		287	262
	15kg	89	162	313		Lead 16	10kg	269	78	69		Lead 16	5kg	214	151	242
	20kg	40	88	199			Lead 16	15kg	126	54			37	Lead 16	8kg	60
Lead 10	20kg	93	162	260	Lead 10	10kg		545	122	109	Lead 10	3kg	333		238	368
	25kg	61	80	217		Lead 10	20kg	210	33	21		Lead 10	6kg	154	49	177
	30kg	32	45	175			Lead 10	30kg	0	0			0	Lead 10	9kg	100
Lead 05	30kg	21	32	262	Lead 05	10kg		602	187	153	Lead 05	10kg	93		56	106
	50kg	1	2	48		Lead 05	20kg	380	92	75		Lead 05	13kg	42	32	71
	60kg	0	0	0			Lead 05	30kg	9	0			0	Lead 05	15kg	23

\*滑塊表面中心到搬送物重心的距離(僅供參考)  
Distance center of slider top to center of gravity of object being transported (For reference only)

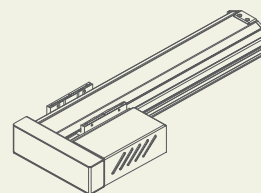
靜態容許負載力矩 Static Loading Moment	(單位:N.m)   (Unit:N.m) 水平使用時 靜態負載力矩 Horizontal use Static Loading Moment
MY	150
MP	150
MR	130



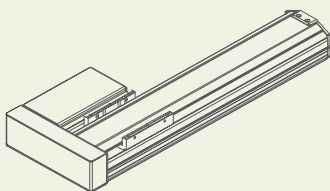
M1



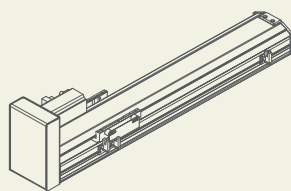
M2



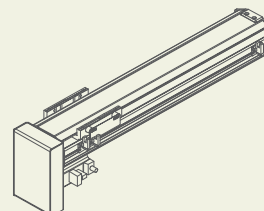
M3



M4

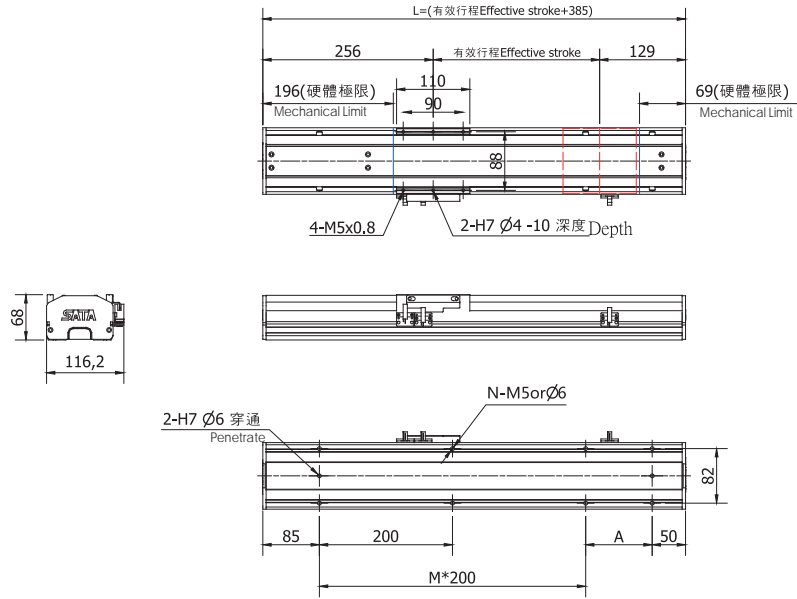


M5



M6

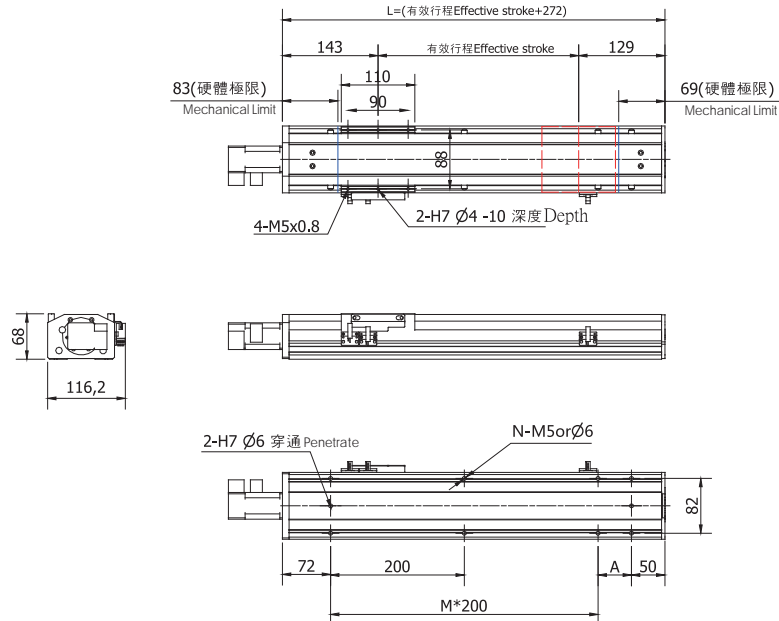
# M1



行程 Stroke	100	150	200	250	300	350	400	450	500	550	600	650	700	750	800	850	900	950	1000	1050
L	485	535	585	635	685	735	785	835	885	935	985	1035	1085	1135	1185	1235	1285	1335	1385	1435
A	150	200	50	100	150	200	50	100	150	200	50	100	150	200	50	100	150	200	50	100
M	1	1	2	2	2	2	3	3	3	3	4	4	4	4	5	5	5	5	6	6
N	6	6	8	8	8	8	10	10	10	10	12	12	12	12	14	14	14	14	16	16
重量(kg)	4.8	5.2	5.6	6.0	6.4	6.8	7.2	7.6	8.0	8.4	8.8	9.2	9.6	10.0	10.4	10.8	11.2	11.6	12.0	12.4

※本公司享有變更規格之權益，恕不另行通知 ※Drawings and specifications are subject to change without prior notice.

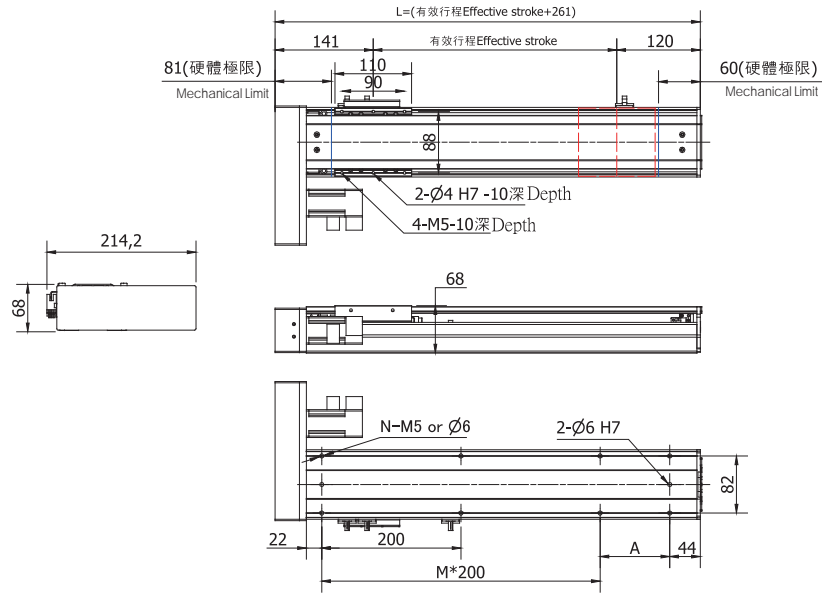
# M2



行程 Stroke	100	150	200	250	300	350	400	450	500	550	600	650	700	750	800	850	900	950	1000	1050
L	372	422	472	522	572	622	672	722	772	822	872	922	972	1022	1072	1122	1172	1222	1272	1322
A	50	100	150	200	50	100	150	200	50	100	150	200	50	100	150	200	50	100	150	200
M	1	1	1	1	2	2	2	2	3	3	3	3	4	4	4	4	5	5	5	5
N	6	6	6	6	8	8	8	8	10	10	10	10	12	12	12	12	14	14	14	14
重量(kg)	4.2	4.6	5.0	5.4	5.8	6.2	6.6	7.0	7.4	7.8	8.2	8.6	9.0	9.4	9.8	10.2	10.6	11.0	11.4	11.8

※本公司享有變更規格之權益，恕不另行通知 ※Drawings and specifications are subject to change without prior notice.

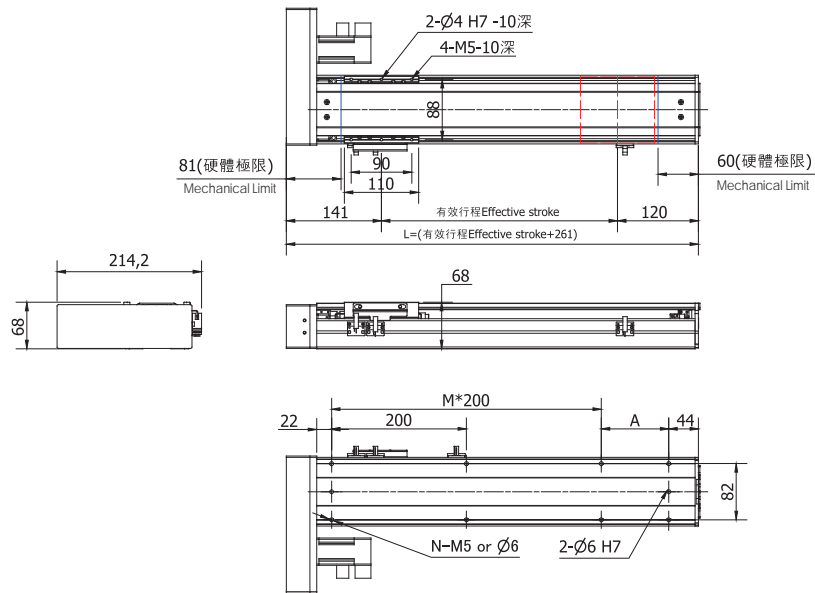
## M3



行程 Stroke	100	150	200	250	300	350	400	450	500	550	600	650	700	750	800	850	900	950	1000	1050
L	361	411	461	511	561	611	661	711	761	811	861	911	961	1011	1061	1111	1161	1211	1261	1311
A	50	100	150	200	50	100	150	200	50	100	150	200	50	100	150	200	50	100	150	200
M	1	1	1	1	2	2	2	2	3	3	3	3	4	4	4	4	5	5	5	5
N	6	6	6	6	8	8	8	8	10	10	10	10	12	12	12	12	14	14	14	14
重量(kg)	5.5	5.9	6.3	6.7	7.1	7.5	7.9	8.3	8.7	9.1	9.5	9.9	10.3	10.7	11.1	11.5	11.9	12.3	12.7	13.1

※本公司享有變更規格之權益，恕不另行通知 ※Drawings and specifications are subject to change without prior notice.

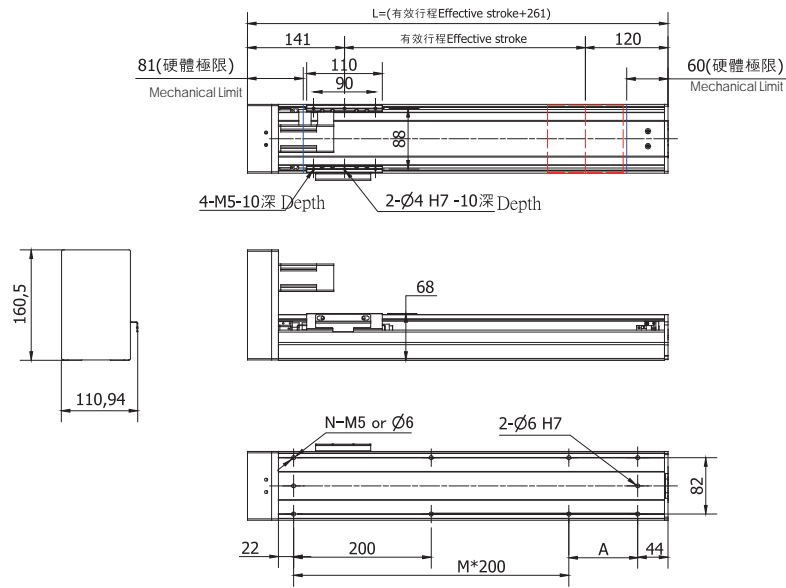
## M4



行程 Stroke	100	150	200	250	300	350	400	450	500	550	600	650	700	750	800	850	900	950	1000	1050
L	361	411	461	511	561	611	661	711	761	811	861	911	961	1011	1061	1111	1161	1211	1261	1311
A	50	100	150	200	50	100	150	200	50	100	150	200	50	100	150	200	50	100	150	200
M	1	1	1	1	2	2	2	2	3	3	3	3	4	4	4	4	5	5	5	5
N	6	6	6	6	8	8	8	8	10	10	10	10	12	12	12	12	14	14	14	14
重量(kg)	5.5	5.9	6.3	6.7	7.1	7.5	7.9	8.3	8.7	9.1	9.5	9.9	10.3	10.7	11.1	11.5	11.9	12.3	12.7	13.1

※本公司享有變更規格之權益，恕不另行通知 ※Drawings and specifications are subject to change without prior notice.

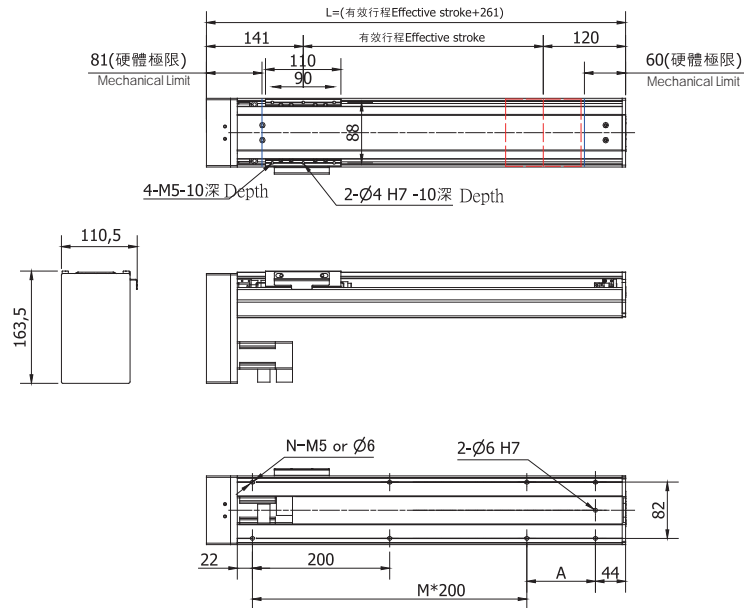
# M5



行程 Stroke	100	150	200	250	300	350	400	450	500	550	600	650	700	750	800	850	900	950	1000	1050
L	361	411	461	511	561	611	661	711	761	811	861	911	961	1011	1061	1111	1161	1211	1261	1311
A	50	100	150	200	50	100	150	200	50	100	150	200	50	100	150	200	50	100	150	200
M	1	1	1	1	2	2	2	2	3	3	3	3	4	4	4	4	5	5	5	5
N	6	6	6	6	8	8	8	8	10	10	10	10	12	12	12	12	14	14	14	14
重量(kg)	5.5	5.9	6.3	6.7	7.1	7.5	7.9	8.3	8.7	9.1	9.5	9.9	10.3	10.7	11.1	11.5	11.9	12.3	12.7	13.1

※本公司享有變更規格之權益，恕不另行通知 ※Drawings and specifications are subject to change without prior notice.

# M6



行程 Stroke	100	150	200	250	300	350	400	450	500	550	600	650	700	750	800	850	900	950	1000	1050
L	361	411	461	511	561	611	661	711	761	811	861	911	961	1011	1061	1111	1161	1211	1261	1311
A	50	100	150	200	50	100	150	200	50	100	150	200	50	100	150	200	50	100	150	200
M	1	1	1	1	2	2	2	2	3	3	3	3	4	4	4	4	5	5	5	5
N	6	6	6	6	8	8	8	8	10	10	10	10	12	12	12	12	14	14	14	14
重量(kg)	5.5	5.9	6.3	6.7	7.1	7.5	7.9	8.3	8.7	9.1	9.5	9.9	10.3	10.7	11.1	11.5	11.9	12.3	12.7	13.1

※本公司享有變更規格之權益，恕不另行通知 ※Drawings and specifications are subject to change without prior notice.