

# Evolution of Engineering Platform at Grammarly

SERHII VASYLENKO  
UXDX EMEA 2025



# Engineering Platform in 2025

**500+  
engineers**

**600+  
repositories**

**130+  
services**

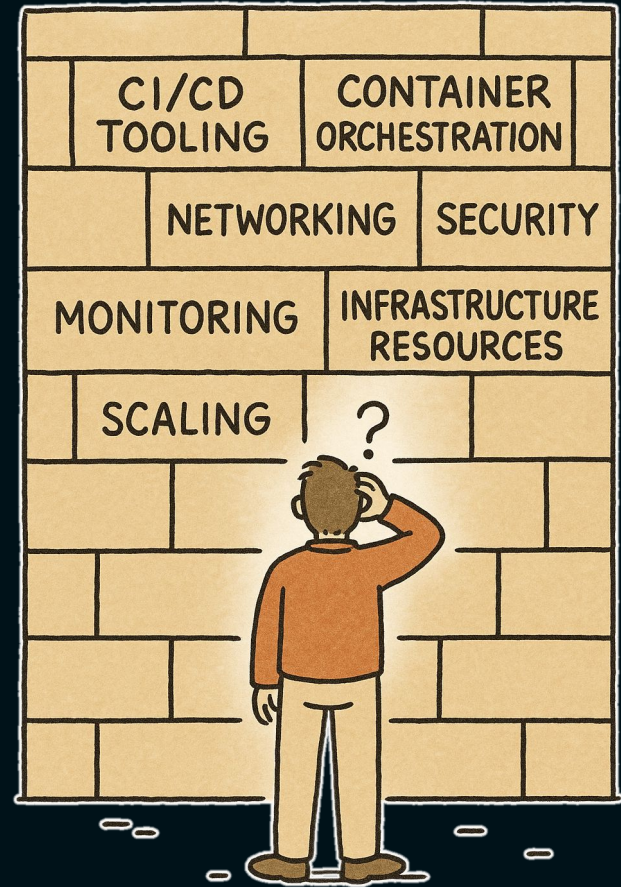
**14000+  
cluster nodes**

**6000+  
CI runs daily**

**20M RPS  
Monitoring Load**



# Universal Challenge



# Our Vision

Unified  
Developer Experience



Technical Compliance  
Controls

Standardized  
Implementation Patterns

Self-Service  
and Abstracted Systems

# Outcomes snapshot 2025

## Developers Impact

Onboarding: Weeks → Days

Infra: Days → Hours → Minutes

Project Setup: Hours → Minutes

AI features integration in 1 day

## Organisation Impact

Patch Cycle: Weeks → Days

New Certifications Unlocked

Platform as Strategic Enabler

# Our Journey



# Ownership Model in 2020

## Dev Teams Ownership

Project code and configs

Project CI/CD

Project infrastructure

Project observability

## Platform Ownership

CI/CD infra and tooling

Observability infra

Compute infra (low level)

Infra expertise and support

# Pain Point: Onboarding Friction





# Self-service And Discovery

## Platform University

Onboarding **4 weeks → 1 week**

Practical, concise tutorials

## Infra Self-Service

Setup time: **48 h → 2 h**

Support tickets drop **30%**

## Service Catalog

Owner lookup **3 h → 5 m**

💡 Practical tip: Analyze support requests (last 3 months) - automate the most common ones



# Pain Point: Infra Complexity



# Platform Abstraction



Golden Path		Self-Service	Auto Infra
Network	Clusters	Code templates	Alerts
Logs	CI setup	CI setup	etc...

💡 Practical tip: Define your "golden path" for some process - be opinionated and automate adherence

# Ownership Model in 2023

## Dev Teams Ownership

- Project code and configs
- Project CI/CD
- Project infrastructure
- Project observability

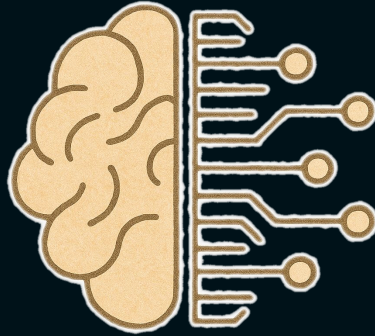
## Shared Ownership

- Security hardening and implementation
- Infra provisioning, scaling and deploy automation
- Cross-service observability

## Platform Ownership

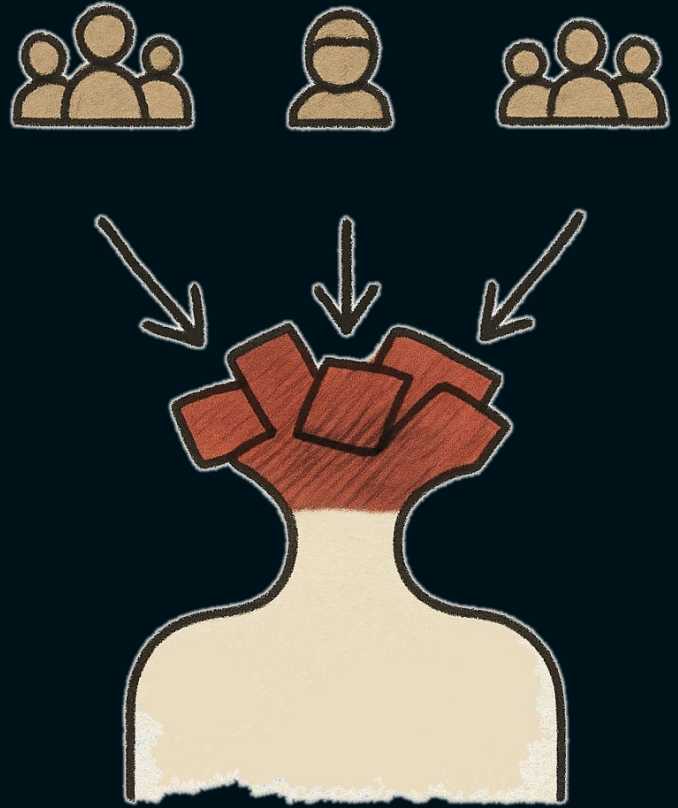
- CI/CD infra and tooling
- Observability infra
- Compute infra (low level)
- Infra expertise and support

# AI/ML Enablement

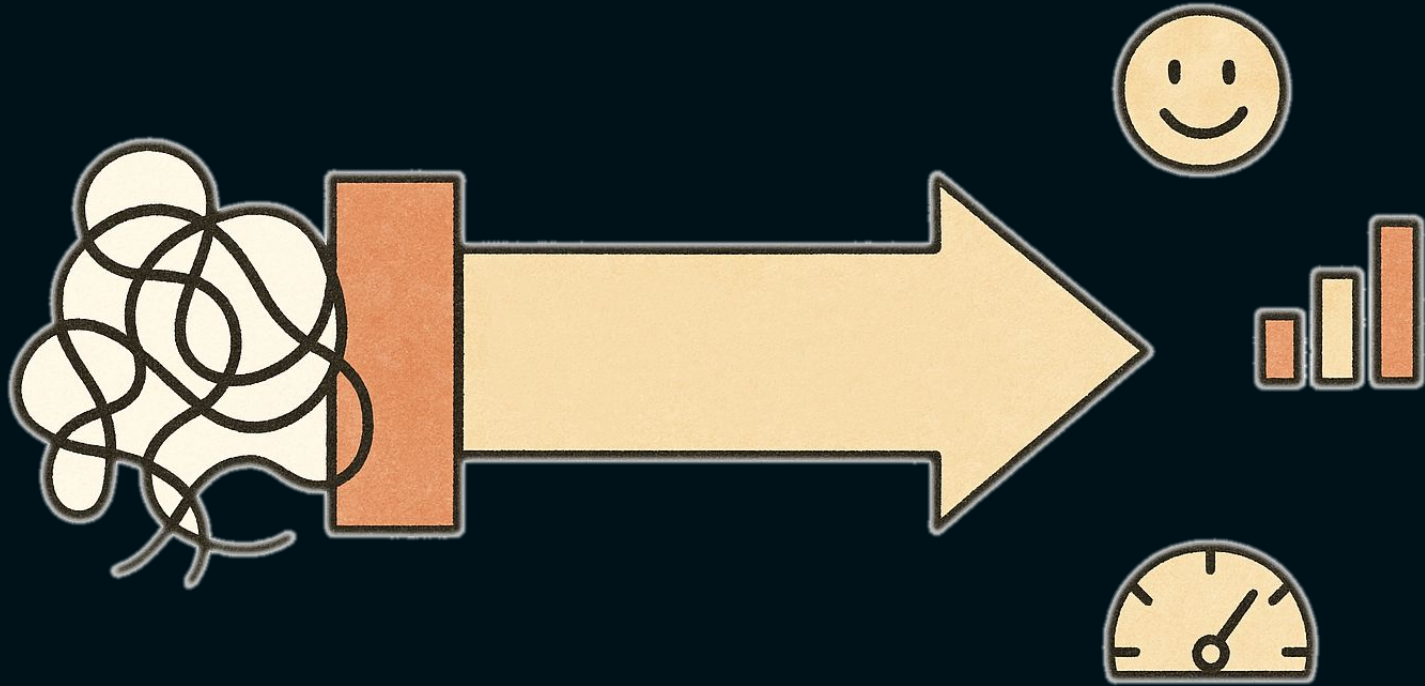


💡 Practical tip: Provide a central gateway for common AI services to handle security, costs, and observability; Let teams focus on usage

# Pain Point: Scaling Blockers



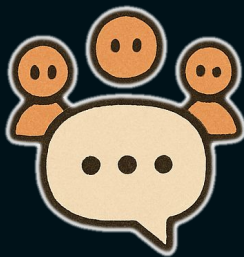
# re:Platform Reimagined Approach



# re:Platform DX Pillars



**Standard  
Deployment  
and Ops**



**Integrated  
DevExp  
Ecosystem**



**Ephemeral  
Dev/Test  
Environments**



**Productivity  
Metrics**



# Ownership Model in 2025

## Dev Teams Ownership

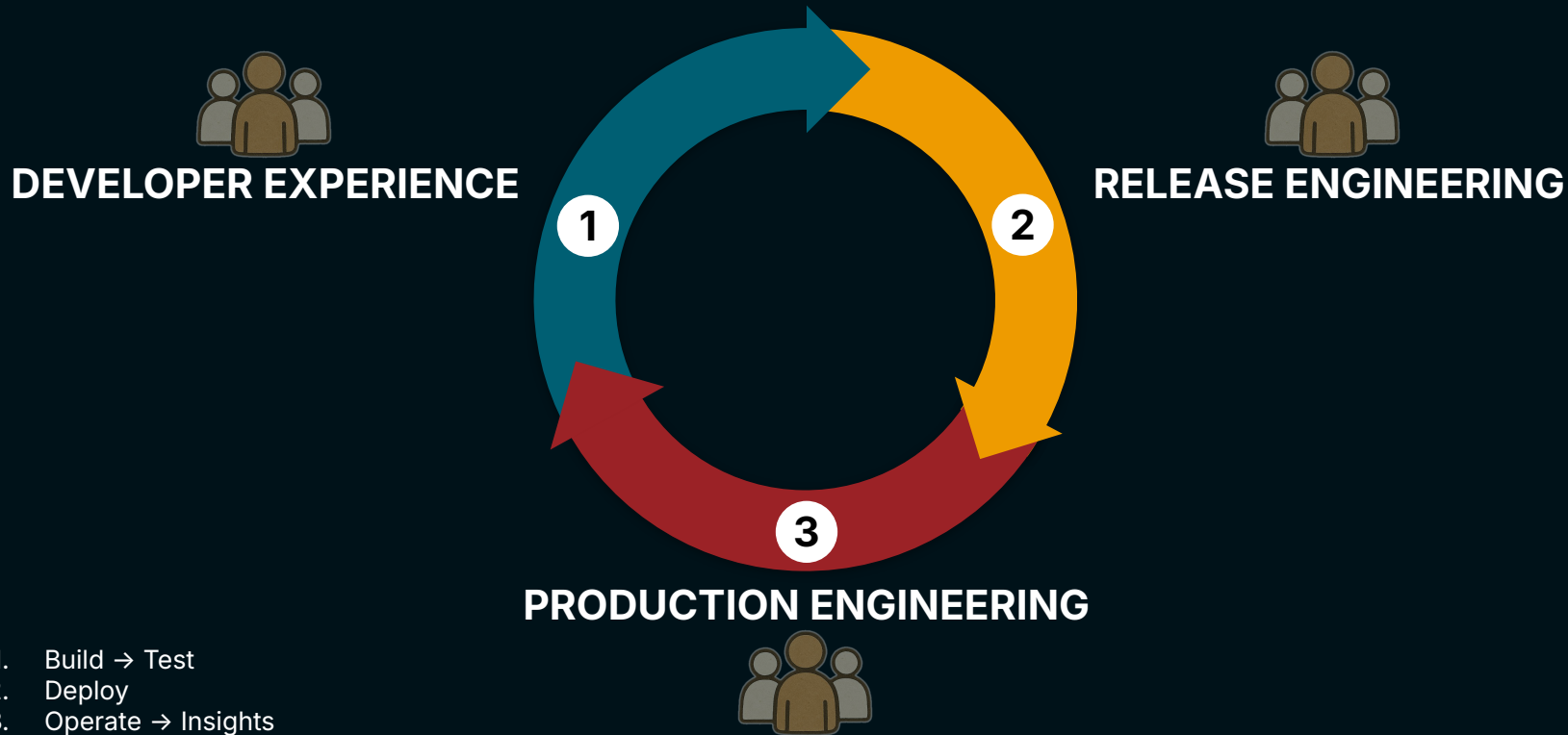
- Project code and configs
- Project CI extensions
- Project observability
- Non-standard infra usage

## Platform Ownership

- Standardized compute, CI/CD, and observability
- Centralized governance
- Unified security and compliance
- Common communication patterns and shared components
- DX metrics, feedback loops and support



# Platform Composition in 2025



# Success Factors & Challenges

Co-design with developers

Treating Platform as a Product

Overcommunication is Key

Start Bolder, Sooner



Practical tip: run an eng-wide survey every quarter to know what your customers like and don't like, what they miss.



# Roadmap 2025+

2025  
Adv Capabilities

Eng Excellence  
by Default

2024  
re:Platform

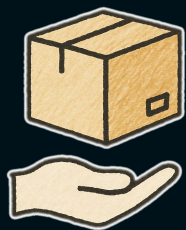
The One  
Developer Portal



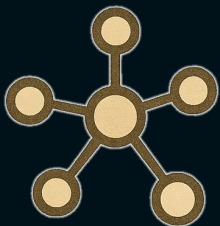
# What This Means For You



Champion developer experience within your teams



Embrace the "Platform as Product" mindset



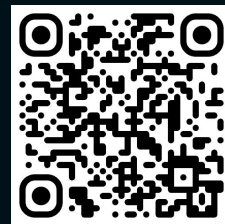
Partner closely with platform counterparts

**Q & A**

# Evolution of Engineering Platform at Grammarly

SERHII VASYLENKO  
UXDX EMEA 2025

Scan to connect with me!





001219

005F73

0A9396

94D2BD

E9D8A6

EE9B00

CA6702

BB3E03

AE2012

9B2226