



VIRGINIA

2016-17 VIRGINIA CAVALIER WOMEN'S BASKETBALL GAME NOTES

2016-17 Schedule/Results

Nov. 11	MIDDLE TENN	W 63-51
Nov. 13	COPPIN STATE	W 103-40
Nov. 16	at Richmond	W 63-56
Nov. 20	RUTGERS	W, 62-54
Nov. 25	vs. St. John's^	6:30 p.m.
Nov. 26	vs. Nebraska^	9 p.m.
Dec. 1	at Northwestern#	9 p.m.
Dec. 4	at Bowling Green	2 p.m.
Dec. 16	ILLINOIS-CHICAGO ^{ACCNE}	7 p.m.
Dec. 19	at Georgia	7 p.m.
Dec. 21	MD EAST SHORE ^{ACCNE}	7 p.m.
Dec. 28	Liberty vs. Dayton% ^{ACCNE}	4:30 p.m.
	UMBC% ^{ACCNE}	7 p.m.
Dec. 29	Liberty vs. UMBC% ^{ACCNE}	4:30 p.m.
	DAYTON% ^{ACCNE}	7 p.m.
Jan. 2	at Syracuse*	7 p.m.
Jan. 5	LOUISVILLE* ^{ACCNE}	7 p.m.
Jan. 8	at North Carolina*	2 p.m.
Jan. 15	BOSTON COLLEGE* ^{ACCNE}	2 p.m.
Jan. 19	at Clemson*	7 p.m.
Jan. 22	at Pittsburgh* ^{RSN}	12:30 p.m.
Jan. 26	VIRGINIA TECH* ^{ACCNE}	7 p.m.
Jan. 29	at Notre Dame* ^{ESPNU}	12 p.m.
Feb. 2	GEORGIA TECH* ^{RSN}	7 p.m.
Feb. 5	DUKE* ^{RSN}	1 p.m.
Feb. 9	at Miami*	7 p.m.
Feb. 12	WAKE FOREST* ^{ACCNE}	2 p.m.
Feb. 16	FLORIDA STATE* ^{RSN}	7 p.m.
Feb. 19	at Virginia Tech* ^{RSN}	3 p.m.
Feb. 23	at Louisville*	7 p.m.
Feb. 26	NC STATE* ^{ACCNE}	2 p.m.

ACC Tournament

March 1-5, 2015

HTC Center, Conway, S.C.

* ACC game

^ South Point Shootout (Las Vegas, Nevada)

% Cavalier Classic Tournament

10th Annual ACC/Big Ten Challenge

[RSN] - ACC Regional Sports Networks

[ESPNU] -ESPNU

[ACCNE] -ACC Network Extra Streaming

All Times Eastern Rankings are Associated Press

Games #5/6 • Nov. 25-26 • South Point Thanksgiving Shootout

South Point Arena • Las Vegas, Nevada



Virginia Cavaliers (4-0, 0-0 ACC)

vs

St. John's Red Storm (1-2, 0-0 Big East)
Nebraska Cornhuskers (3-1, 0-0 Big Ten)



Radio: WINA 1070-AM and 98.9 FM: Channing Poole

TV: none

- The Cavaliers are looking to start the season 5-0 for the second time in head coach Joanne Boyle's six seasons at UVA. The Cavaliers started the 2015-16 season with a 5-0 record
- A different freshman has led the team in rebounding in each of the first four games (Jocelyn Willoughby 9 vs. Middle Tennessee, Felicia Aiyetotan 12 vs. Coppin St., Dominique Toussaint 9 at Richmond, Jablonowski 6 vs. Rutgers)
- Head coach Joanne Boyle comes into the tournament with 298 career wins, with 95 coming at the helm of the Cavaliers
- Virginia leads the ACC in three-point shooting percentage and ranks 20th nationally, making 41.5 percent of their long-range attempts (27-of-65).
- Junior Aliyah Huland El, who scored 16 points against Rutgers on Sunday, was 9-of-16 (56.2 percent) from the field in the two games last week, including going 5-of-10 (50.0 percent) from three-point range. In the last three games, Huland El is averaging 5.0 assists per game
- Senior Breyana Mason was 5-of-9 (55.5 percent) from three-point range in the two games last week
- Junior J'Kyra Brown leads the team in three-point efficiency, going 6-of-13 (46.2 percent) this season
- In the last two games, UVA is 21-of-25 from the free throw line. The Cavaliers are second in the ACC, shooting 76.1 percent from the stripe
- Lauren Moses, who was 9-of-9 from the line in her career-best 27-point game at Richmond last week, converted 12-consecutive free throw attempts before missing on her third attempt against Rutgers
- Felicia Aiyetotan comes into the week ranked No. 4 in the nation in shots blocked (15) and ninth in blocks per game (3.8) while averaging 12.5 minutes per game. Aiyetotan is also shooting 70.6 percent from the field making 12 of 17 field goal attempts
- The Cavaliers are third in the ACC, averaging 6.0 blocked shots per game. Last season, the Cavaliers were 11th in the ACC, averaging 3.0
- Freshman Jocelyn Willoughby ranks third in the ACC in minutes per game (34.75)
- This will be Virginia's first time competing in the South Point Shootout
- Arizona State, Maryland and Washington State will also be playing in the tournament

Projected Starting Lineup

G	4	Dominique Toussaint	Fr.	8.3 ppg	4.8 rpg	13 assts/6 stls
• 2016 Gatorade New York State High School Player of the Year and Miss New York Basketball						
G	12	Breyana Mason	sr.	10.5 ppg	3.5 rpg	10 assts/9 stls
• Lone senior on the team; 2x ACC All-Academic Team member						
G	13	Jocelyn Willoughby	Fr.	11.5 ppg	6.0 rpg	8 assts/2 stls
• 2016 New Jersey Gatorade State High School Player of the Year						
G	23	Aliyah Huland El	Jr.	11.0 ppg	3.5 rpg	15 assts/5 stl/3 blk
• Double-double with 12 points and 10 assists vs Coppin State						
F	21	Lauren Moses	Jr.	14.8 ppg	6.3 rpg	10 assts/7 stls
• Led last year's team in rebounding; career-high 27 points at Richmond						

QUICK FACTS
THE UNIVERSITY OF VIRGINIA

Name.....	The University of Virginia
Founded.....	by Thomas Jefferson in 1819
Nicknames.....	Cavaliers, Wahos, 'Hoos
Location.....	Charlottesville, Va.
Enrollment.....	23,883 (16,673 undergraduate)
President.....	Teresa A. Sullivan (Michigan State '70)
Athletics Director.....	Craig Littlepage (Pennsylvania '73)
Conference.....	Atlantic Coast Conference (ACC)
Colors.....	Orange and Blue
Official Athletics Websites.....	VirginiaSports.com VirginiaSportsTV.com
University Website.....	virginia.edu

WOMEN'S BASKETBALL INFORMATION

First Season of Basketball.....	1973-74
All-Time Record.....	878-428 (44th year)*
All-Time Home Record.....	432-193*
John Paul Jones Arena.....	130-44 (11th season)*
University Hall.....	302-149
All-Time ACC Record.....	343-204 (40 years)*
Home Facility.....	John Paul Jones Arena (14,593)
Press Row Phone Number.....	434-962-0579
NCAA Tournament Appearances/Last.....	24/2010
NCAA Tournament Record.....	33-24
WNIT Tournament Appearances/Last.....	5/2012
WNIT Tournament Record.....	13-8
2015-16 Record.....	18-16
ACC Record/Finish.....	6-10/9th
Letterwinners Returning/Lost.....	7/4
Starters Returning/Lost.....	3/2
Newcomers.....	5

COACHING & SUPPORT STAFF

Head Coach.....	Joanne Boyle
Career Record.....	298-165*
Virginia Record.....	94-72*
Assistant Coach.....	La'Keshia Frett Meredith
Assistant Coach.....	Katherine Graham
Assistant Coach.....	Tim Taylor
Asst AD WBB Operations.....	Sarah Holsinger
Assistant Director of Operations.....	Kate Martin
Video Coordinator.....	Andrew Landers
Athletic Trainer.....	Craig Oates
Strength & Conditioning.....	Robb Hornett
Equipment Manager.....	Matt Althoff

* as of 11/21/16

INTERVIEW POLICY

All interview requests for Virginia women's basketball must be made through Melissa Dudek in the Virginia Athletics Media Relations Office. Players' individual phone numbers will not be given to the media at any time. Game day interviews will not be granted until the postgame press conference opportunity. Please give a minimum of 24 hours notice for all interview requests.

ST. JOHNS

- Virginia is 2-0 all-time against St. John's, but this is the first meeting between the two teams since 1991
- The two teams met in the first round of the 1988 NCAA Tournament with UVA picking up an 85-64 victory
- Last year, the Red Storm won the program's first BIG EAST Tournament Title in 28 years.
- St. John's has played in the NCAA tournament six times in the last seven seasons
- St. John's women's basketball team was selected to finish sixth in the preseason Big East coaches' poll and were receiving votes in the USA Today preseason coaches' poll
- Senior forward Jade Walker is the Red Storm's leading returning scorer this season, as she averaged 9.3 points in 32 games last season. Walker is averaging 12.0 ppg this season. She also leads the team in rebounding at 5.7 per game

NEBRASKA

- This is the first-ever meeting between the two teams
- This is the second of three times UVA faces a Big Ten opponent. Virginia is coming off a 62-54 victory over Rutgers. The Cavaliers play at Northwestern on Dec. 1 in this year's ACC/Big Ten Challenge game
- The Cornhuskers were 18-13 overall last season, including a 9-9 Big Ten mark, falling in the first round of the WNIT
- Jessica Shepard, a 6-4 sophomore forward, claimed a spot on the 2016-17 Preseason All-Big Ten Women's Basketball Team after coming off a first-team All-Big Ten campaign in 2015-16. Shepard averaged team bests of 18.5 points and 8.6 rebounds per game on her way to Big Ten Freshman-of-the-Year honors in 2015-16
- Nebraska alum Amy Williams is in her first season as Nebraska's head coach. Williams spent the last four seasons as the Head Coach at South Dakota, where she has led the team to two regular season Summit League championships, one Summit League tournament championship, and the 2016 WNIT Championship, while posting an overall record of 96-44 (.686).

SIGNING DAY

- Virginia women's basketball head coach Joanne Boyle announced on Tuesday (Nov. 15) that Brianna Tinsley (5-7, guard, Madison, Va./St. Anne's Belfield School) signed a National Letter of Intent to play for the Cavaliers beginning with the 2017-18 season
- Tinsley, from just up the road in Madison, Va., is a point guard at St. Anne's Belfield School, helping lead the team to the state championship game during her freshman season. As a sophomore, Tinsley averaged 15.2 points per game after scoring 442 points in 29 games and added 5.1 assists per game. A two-time First Team All-State selection, Tinsley improved to 17.4 points per game as a junior with 5.2 assists per game. She was named to the League of Independent Schools all-conference team three consecutive years
- The Cavaliers will lose one senior at the end of the 2016-17 season, guard Breyana Mason

2016-17 VIRGINIA WOMEN'S BASKETBALL ROSTER
NUMERICAL

NO.	NAME	POS.	HT.	CLASS	HOMETOWN / PREVIOUS SCHOOL
2	Jae'Lisa Allen	Forward	6-2	Jr.	Pine Bluff, Ark./White Hall
4	Dominique Toussaint	Guard	5-9	Fr.	Staten Island, N.Y./Christ the King
10	J'Kyra Brown	Guard	5-11	Jr.	Rocky Mount, N.C./Rocky Mount HS/East Carolina
12	Breyana Mason	Guard	5-8	Sr.	Woodbridge, Va./Forest Park
13	Jocelyn Willoughby	Guard	6-0	Fr.	East Orange, N.J./Newark Academy
14	Lisa Jablonowski	Forward	6-3	Fr.	Ernster, Luxembourg/Lycees des Garçons
21	Lauren Moses	Forward	6-2	Jr.	Mount Holly, N.J./Rancocas
23	Aliyah Huland El	Guard	6-1	Jr.	Randolph, N.J./Randolph
30	Felicia Aiyeotan	Center	6-9	Fr.	Lagos, Nigeria/Blair Academy (N.J.)
32	Moné Jones	Forward	6-3	So.	Durham, N.C./Riverside
35	Shakyna Payne	Forward	6-3	R-Fr.	Acworth, Ga./SW Atlanta Christian Academy

ALPHABETICAL

NO.	NAME	POS.	HT.	CLASS	HOMETOWN / PREVIOUS SCHOOL
30	Felicia Aiyeotan	Center	6-9	Fr.	Lagos, Nigeria/Blair Academy (N.J.)
2	Jae'Lisa Allen	Forward	6-2	Jr.	Pine Bluff, Ark./White Hall
10	J'Kyra Brown	Guard	5-11	Jr.	Rocky Mount, N.C./Rocky Mount HS/East Carolina
23	Aliyah Huland El	Guard	6-1	Jr.	Randolph, N.J./Randolph
4	Lisa Jablonowski	Forward	6-3	Fr.	Ernster, Luxembourg/Lycees des Garçons
32	Moné Jones	Forward	6-3	So.	Durham, N.C./Riverside
12	Breyana Mason	Guard	5-8	Sr.	Woodbridge, Va./Forest Park
21	Lauren Moses	Forward	6-2	Jr.	Mount Holly, N.J./Rancocas
35	Shakyna Payne	Forward	6-3	R-Fr.	Acworth, Ga./SW Atlanta Christian Academy
4	Dominique Toussaint	Guard	5-9	Fr.	Staten Island, N.Y./Christ the King
13	Jocelyn Willoughby	Guard	6-0	Fr.	East Orange, N.J./Newark Academy

HEAD COACH: Joanne Boyle (Duke '85), 6th Year at Virginia

ASSISTANT COACH: La'Keshia Frett Meredith (Georgia '97), 4th year at Virginia

ASSISTANT COACH: Katherine Graham (LSU, '11), 1st year at Virginia

ASSISTANT COACH: Tim Taylor (James Madison, '89), 1st/8th year at Virginia

PRONUNCIATION GUIDE

Felicia Aiyeotan	EYE-oh-Ten
Jae'Lisa Allen	JAY-lisa
J'Kyra Brown	Juh-KYE-rah
Aliyah Huland El	ahh-LEE-uh HEW-land-ELLE
Lisa Jablonowski	LEE-zuh
Shakyna Payne	shuh-KYE-nuh
La'Keshia Frett Meredith	Lah-KEE-shah

30 FELICIA AIYEOTAN



6-9 • Freshman • Center • Lagos, Nigeria • Blair Academy (N.J.)

2016-17

- Made her collegiate debut in season-opener against Middle Tennessee, scoring four points with four blocks in four minutes (11/11)
- Came off the bench to log a double-double with 23 points and 12 rebounds in 22 minutes against Coppin State (11/13)

HIGH SCHOOL/CLUB

- Played her senior season at Blair Academy (N.J.), averaging 14.0 points per game
- Mid-Atlantic Prep League First-Team All-League
- NJISAA First-Team All-Prep
- As a junior at Nuemann Goretti High in Philadelphia, Pa., won the national title with the team going 30-0 and finishing as the top-ranked high school team in the country
- Rated as the No. 87 overall prospect and No. 14 at her position by ProspectNation and No. 15 among all 2016-17 centers by ESPN HoopGurlz
- Played on the Nigerian U16 National Team

SINGLE GAME BESTS

POINTS

Season: 23 vs Coppin State (11/13)

REBOUNDS

Season: 12 vs Coppin State (11/13)

FG MADE

Season: 10 vs Coppin State (11/13)

FG ATTEMPTS

Season: 12 vs Coppin State (11/13)

3 PT FG MADE

Season:

3 PT FG ATTEMPTS

Season:

FT MADE

Season: 3

FT ATTEMPTS

Season: 4

ASSISTS

Season: 2 vs Coppin State (11/13)

BLOCKS

Season: 6 vs Coppin State (11/13)

STEALS

Season:

Double Doubles:

Season: 1, last vs Coppin State (11/13)

2016-17 GAME-BY-GAME:

Opponent	GS	FG-FGA	3FG-3FGA	FT-FTA	Off-Def	Total Reb	PF	Points	A	TO	Blk	Stl	Min
MIDD TENN		1-3	0-0	2-2	2-0	2	1	4	2	0	4	0	9
COPPIN		10-12	0-0	3-4	5-7	12	3	23	0	2	6	0	22
at Richmond		0-1	0-0	0-0	0-0	0	0	0	0	0	3	0	7
RUTGERS		1-1	0-0	0-0	0-3	3	2	2	1	1	2	0	12
vs. St. Johns													
vs. Nebraska													
at Northwestern													
at Bowling Green													
UIC													
at Georgia													
UMES													
UMBC													
DAYTON													
at Syracuse													
LOUISVILLE													
at UNC													
BC													
at Clemson													
at Pitt													
VT													
at UND													
GT													
DUKE													
at Miami													
WAKE													
FSU													
at VT													
at Louisville													
NC STATE													

VIRGINIA CAREER STATISTICS

Year	G-GS	Min/Avg	FG-FGA	Pct.	3FG-A	Pct.	FT-FTA	Pct.	O-D	T	Avg.	Pf-DQ	Ast	TO	Blk	St	Pts	Avg
2016-17	4-0	50/12.5	12-17	.706	0-0	.000	5-6	.833	7-10	17	4.3	6-0	3	3	15	0	29	7.3

2 JAE'LISA ALLEN



6-2 • junior • Forward • Pine Bluff, Ark. • White Hall

AT VIRGINIA

2016-17

- Played a career-high 20 minutes against Coppin State, scoring 5 points with three rebounds

2015-16

- Appeared in nine games, scoring four points
- Went 2-of-2 against NJIT, scoring four points in three minutes
- Played seven minutes against Norfolk State
- Played three minutes against Longwood (11/22)
- Appeared in the second quarter at both Georgia Tech (1/17) and Florida State (1/21)

2014-15

- Appeared in four games
- Made her collegiate debut against Radford (11/16), playing the final four minutes of the game
- Scored her first collegiate points in the final 30 seconds of the Delaware State game, giving the Cavaliers the basket that pushed them to the century mark

2016-17 GAME-BY-GAME

Opponent	GS	FG-FGA	3FG-3FGA	FT-FTA	Off-Def	Total Reb	PF	Points	A	TO	Blk	Stl	Min
MIDD TENN		0-1	0-0	0-0	0-0	0	0	0	0	0	0	0	1
COPPIN		2-4	0-0	1-1	0-3	3	4	5	0	1	0	0	20
at Richmond		0-0	0-0	0-0	0-0	0	0	0	0	0	0	0	3
RUTGERS		DNP											
vs. St. Johns													
vs. Nebraska													
at Northwestern													
at Bowling Green													
UIC													
at Georgia													
UMES													
UMBC													
DAYTON													
at Syracuse													
LOUISVILLE													
at UNC													
BC													
at Clemson													
at Pitt													
VT													
at UND													
GT													
DUKE													
at Miami													
WAKE													
FSU													
at VT													
at Louisville													
NC STATE													

SINGLE GAME BESTS

POINTS

Season: 5 vs Coppin State (11/13)
Career: 5 vs Coppin State (11/13/16)

REBOUNDS

Season: 3 vs Coppin State (11/13)
Career: 3 (2x)

FG MADE

Season: 2
Career: 2

FG ATTEMPTS

Season: 4
Career: 4

3 PT FG MADE

Season:
Career:

3 PT FG ATTEMPTS

Season:
Career:

FT MADE

Season: 1
Career:

FT ATTEMPTS

Season: 1
Career:

ASSISTS

Season:
Career:

BLOCKS

Season:
Career:

STEALS

Season:
Career:

VIRGINIA CAREER STATISTICS

Year	G-GS	Min/Avg	FG-FGA	Pct.	3FG-A	Pct.	FT-FTA	Pct.	O-D	T	Avg.	Pf-DQ	Ast	TO	Blk	St	Pts	Avg
2014-15	4-0	13/3.3	1-3	.333	0-0	.000	0-0	.000	0-2	2	0.5	3-0	0	0	0	0	2	0.5
2015-16	9-0	24/2.7	2-9	.222	0-0	.000	0-0	.000	4-1	5	0.6	3-0	0	2	0	0	4	0.4
2016-17	3-0	24/8.0	2-5	.400	0-0	.000	1-1	1.000	0-3	3	1.0	4-0	0	1	0	0	5	1.7
TOTAL	16-0	61/3.8	5-17	.294	0-0	.000	1-1	1.000	4-6	10	0.6	10-0	0	3	0	0	11	0.7

10 J'KYRA BROWN



5-11 • Junior • Guard • Rocky Mount, N.C. • Rocky Mount High School

AT VIRGINIA 2016-17

- Scored a UVA career high 18 points against Coppin State (11/13)
- Started the season with a 9-1 assist-to-turnover ratio in the first three games

2015-16

- Appeared in 33 games with six starts, averaging 5.0 points per game
- Scored 10 points, all in the third quarter, in her Cavalier debut at MT (11/13)
- Started Cavalier career with back-to-back 10-point games, scoring 11 in 21 minutes against Norfolk State
- Grabbed a season-high 10 rebounds at Rutgers (3/20)

2014-15

- Sat out the season under NCAA transfer rules

AT EAST CAROLINA

2013-14

- Averaged 5.9 points per game while twice earning Conference USA Freshman of the Week honors
- Scored a season-high 29 points against Louisiana Tech, going 11-of-14 from the field and 6-of-8 from three-point range against the Lady Techsters

2016-17 GAME-BY-GAME

Opponent	GS	FG-FGA	3FG-3FGA	FT-FTA	Off-Def	Total Reb	PF	Points	A	TO	Blk	Stl	Min
MIDD TENN		0-3	0-2	1-2	1-4	5	1	1	4	0	0	1	19
COPPIN		5-8	4-5	4-4	0-4	4	2	18	3	1	0	1	25
at Richmond		2-6	2-5	0-0	1-0	1	3	6	2	0	0	0	24
RUTGERS		0-1	0-1	0-0	0-0	0	0	0	2	2	0	0	8
vs. St. Johns													
vs. Nebraska													
at Northwestern													
at Bowling Green													
UIC													
at Georgia													
UMES													
UMBC													
DAYTON													
at Syracuse													
LOUISVILLE													
at UNC													
BC													
at Clemson													
at Pitt													
VT													
at UND													
GT													
DUKE													
at Miami													
WAKE													
FSU													
at VT													
at Louisville													
NC STATE													

SINGLE GAME BESTS

POINTS

Season: 18 vs Coppin State (11/13)
Career: 18 vs Coppin State (11/13/16)

REBOUNDS

Season: 5 vs Middle Tennessee (11/11)
Career: 10 at Rutgers (3/20/16)

FG MADE

Season: 5 vs Coppin State (11/13)
Career: 5 vs Coppin State (11/13)

FG ATTEMPTS

Season: 8 vs Coppin State (11/13)
Career: 11 at Duke (2/4/16)

3 PT FG MADE

Season: 4 vs Coppin State (11/13)
Career: 4 vs Coppin State (11/13/16)

3 PT FG ATTEMPTS

Season: 5 vs Coppin State (11/13)
Career: 7 at Duke (2/4/16)

FT MADE

Season: 4 vs Coppin State (11/13)
Career: 4 (2x)

FT ATTEMPTS

Season: 4 vs Coppin State (11/13)
Career: 4 (2x)

ASSISTS

Season: 4 vs. Middle Tennessee (11/11)
Career: 4 vs. Middle Tennessee (11/11/16)

BLOCKS

Season:
Career:

STEALS

Season:
Career:

AT EAST CAROLINA

Year	G-GS	Min/Avg	FG-FGA	Pct.	3FG-A	Pct.	FT-FTA	Pct.	O-D	T	Avg.	Pf-DQ	Ast	TO	Blk	St	Pts	Avg
2013-14	31-1	341/11.0	63-155	.406	27-81	.333	31-42	.738	21-31	52	1.7	45-0	25	41	9	16	184	5.9

AT VIRGINIA

Year	G-GS	Min/Avg	FG-FGA	Pct.	3FG-A	Pct.	FT-FTA	Pct.	O-D	T	Avg.	Pf-DQ	Ast	TO	Blk	St	Pts	Avg
2015-16	33-6	545/16.5	51-168	.304	27-85	.318	37-52	.712	31-61	92	2.8	60-0	30	50	3	23	166	5.0
2016-17	4-0	76/19.0	7-18	.389	6-13	.462	5-6	.833	2-8	10	2.5	6-0	11	3	0	2	25	6.3
TOTAL	37-6	621/16.8	58-186	.312	33-98	.337	42-58	.724	33-69	102	2.8	66-0	41	53	3	25	191	5.2

23 ALIYAH HULAND EL



6-1 • Junior • Guard • Randolph, N.J. • Randolph High School

AT VIRGINIA 2016-17

- Had the first double-double of her career with 12 points and 10 assists against Coppin State, the first UVA player to have double-digit assists in a game since Sharneé Zoll had 11 in 2008
- Scored 11 points in the first quarter in the win over Rutgers (11/20)

2015-16

- Appeared in all 34 games with 10 starts, averaging 9.6 points per game
- Opened the season with a 10-pt performance at MT (11/13)
- Scored a career-high 20 points at Auburn (Nov. 19) followed by a 20-point performance vs. Longwood

2014-15

- Played in all 31 games with one start
- Made her collegiate debut against Ohio State, scoring five points with an assist and two blocked shots in 13 minutes
- Had her first career start against Florida State, scoring a season-high 14 points

SINGLE GAME BESTS

POINTS

Season: 16 vs Rutgers (11/20)
Career: 20 (2x) last vs Longwood (11/22/15)

REBOUNDS

Season: 6 vs Rutgers (11/20)
Career: 10 vs Tulane (11/28/15)

FG MADE

Season: 6 vs Rutgers (11/20)
Career: 9 vs Longwood (11/22/15)

FG ATTEMPTS

Season: 13 vs Coppin State (11/13)
Career: 15 at Auburn (11/19/15)

FG SHOOTING

Season: 6-10 vs Rutgers (11/20)
3-3 vs Middle Tennessee (11/11)
Career: 7-10 (.700) vs NJIT (12/5/15)

3 PT FG MADE

Season: 4 vs Rutgers (11/20)
Career: 4 vs Rutgers (11/20/16)

3 PT FG ATTEMPTS

Season: 7 vs Rutgers (11/20)
Career: 8 at Auburn (11/19/15)

3 PT FG PERCENTAGE

Season:
Career: 3-of-3 vs Miami (1/3/16)

FT MADE

Season: 3
Career: 7 at Auburn (11/19/15)

FT ATTEMPTS

Season: 4
Career: 8 at Auburn (11/19/15)

ASSISTS

Season: 10 vs Coppin State (11/13)
Career: 10 vs Coppin State (11/13/16)

BLOCKS

Season: 2
Career: 3 (2x) last vs Miami (1/3/16)

STEALS

Season: 3 vs Coppin State (11/13)
Career: 4 vs Longwood (12/16/14)

DOUBLE DOUBLES

Season: 1 vs Coppin State (11/13)
Career: 1 vs Coppin State (11/13/16)

2016-17 GAME-BY-GAME:

Opponent	GS	FG-FGA	3FG-3FGA	FT-FTA	Off-Def	Total Reb	PF	Points	A	TO	Blk	Stl	Min
MIDD TENN	*	3-3	1-1	2-4	1-2	3	3	9	0	4	0	0	22
COPPIN	*	4-13	1-5	3-4	3-1	4	2	12	10	5	0	3	31
at Richmond	*	3-6	1-3	0-0	1-0	1	1	7	2	1	1	1	22
RUTGERS	*	6-10	4-7	0-0	4-2	6	3	16	3	4	2	1	38
vs. St. Johns													
vs. Nebraska													
at Northwestern													
at Bowling Green													
UIC													
at Georgia													
UMES													
UMBC													
DAYTON													
at Syracuse													
LOUISVILLE													
at UNC													
BC													
at Clemson													
at Pitt													
VT													
at UND													
GT													
DUKE													
at Miami													
WAKE													
FSU													
at VT													
at Louisville													
NC STATE													

VIRGINIA CAREER STATISTICS

Year	G-GS	Min/Avg	FG-FGA	Pct.	3FG-A	Pct.	FT-FTA	Pct.	O-D	T	Avg.	Pf-DQ	Ast	TO	Blk	St	Pts	Avg
2014-15	31-1	552/17.8	63-189	.333	23-93	.247	24-32	.750	19-34	53	1.7	59-0	29	43	10	24	173	5.6
2015-16	34-10	853/25.1	120-281	.427	35-107	.327	51-63	.810	40-74	114	3.4	90-4	46	94	21	35	326	9.6
2016-17	4-4	113/28.3	16-32	.500	7-16	.438	5-8	.625	9-5	14	3.5	9-0	15	14	3	5	44	11.0
TOTAL	69-15	1518/22.0	199-502	.396	65-216	.301	80-103	.777	68-113	181	2.6	158-4	9	151	34	64	543	7.9

14 LISA JABLONOWSKI



6-3 • Freshman • Wing/Forward • Ernster, Luxembourg • Lycee des Garcons

AT VIRGINIA 2016-17

- Made her collegiate debut in the season-opener against Middle Tennessee, scoring four points with four rebounds in 11 minutes
- Had a game-high six rebounds in 13 minutes against Rutgers (11/20)

HIGH SCHOOL/CLUB

- Named Sportswoman of the Year, the most prestigious award in Luxembourg, for her performance in the 2014-15 season
- Helped lead her Amicale Steinsel team to the 2016 National Championship of Luxembourg
- Voted to the 2016 Luxembourgish League All-Star Game roster
- Was named the Eurobasket.com Player of the Week (Nov. 9, 2015) after scoring 21 points with nine rebounds and four assists in a victory over Sparta
- A three-time MVP of the U16 and U18 divisions, she helped her team win the Luxembourg Cup in 2014 and guided them to second place finishes in the U14, U16 and U18 championships.

SINGLE GAME BESTS

POINTS

Season: 4

REBOUNDS

Season: 6 vs Rutgers (11/20)

FG MADE

Season: 2

FG ATTEMPTS

Season: 3

3 PT FG MADE

Season: 0

3 PT FG ATTEMPTS

Season: 1

FT MADE

Season: 0

FT ATTEMPTS

Season: 0

ASSISTS

Season: 1

BLOCKS

Season: 0

STEALS

Season: 1

2016-17 GAME-BY-GAME:

Opponent	GS	FG-FGA	3FG-3FGA	FT-FTA	Off-Def	Total Reb	PF	Points	A	TO	Blk	Stl	Min
MIDD TENN		2-3	0-0	0-0	2-2	4	0	4	0	2	0	1	11
COPPIN		DNP											
at Richmond		1-2	0-1	0-0	1-0	1	0	2	0	0	0	0	10
RUTGERS		1-5	0-1	0-0	4-2	6	1	2	1	0	0	0	13
vs. St. Johns													
vs. Nebraska													
at Northwestern													
at Bowling Green													
UIC													
at Georgia													
UMES													
UMBC													
DAYTON													
at Syracuse													
LOUISVILLE													
at UNC													
BC													
at Clemson													
at Pitt													
VT													
at UND													
GT													
DUKE													
at Miami													
WAKE													
FSU													
at VT													
at Louisville													
NC STATE													

VIRGINIA CAREER STATISTICS

Year	G-GS	Min/Avg	FG-FGA	Pct.	3FG-A	Pct.	FT-FTA	Pct.	O-D	T	Avg.	Pf-DQ	Ast	TO	Blk	St	Pts	Avg
2016-17	3-0	34/11.3	4-10	.400	0-2	.000	0-0	.000	7-4	11	3.7	1-0	1	2	0	1	8	2.7

32 MONÉ JONES



6-3 • Sophomore • Forward • Durham, N.C. • Riverside High School

AT VIRGINIA 2016-17

- Will miss the first several games of the season with a leg injury

2015-16

- Appeared in 33 games with one start, scoring 98 points
- Made her collegiate debut at Middle Tennessee, scoring six points with five rebounds in 24 minutes
- Had her first double-digit scoring effort against Norfolk State with 10 points on 3-of-3 shooting
- Pulled in seven rebounds against NJIT (12/5)
- Scored eight points at Florida State (1/21)
- Made her first collegiate start against Virginia Tech

HIGH SCHOOL

- Averaged 11.7 points, 6.5 rebounds, 1.3 assists, 1.1 steals and 3.1 blocks per game in four years at Riverside High School
- PAC 6 All-Conference and All-State team honors
- Named to the North Carolina/South Carolina All-Star Game roster
- McDonald's High School All-America nominee
- Was also a middle hitter for three years for the RHS volleyball team, earning PAC 6 All-Conference honors

2016-17 GAME-BY-GAME:

Opponent	GS	FG-FGA	3FG-3FGA	FT-FTA	Off-Def	Total Reb	PF	Points	A	TO	Blk	Stl	Min
MIDD TENN		INJ											
COPPIN		INJ											
at Richmond		INJ											
RUTGERS		INJ											
vs. St. Johns													
vs. Nebraska													
at Northwestern													
at Bowling Green													
UIC													
at Georgia													
UMES													
UMBC													
DAYTON													
at Syracuse													
LOUISVILLE													
at UNC													
BC													
at Clemson													
at Pitt													
VT													
at UND													
GT													
DUKE													
at Miami													
WAKE													
FSU													
at VT													
at Louisville													
NC STATE													

SINGLE GAME BESTS

POINTS

Season:

Career: 10 vs Norfolk State (11/16/15)

REBOUNDS

Season:

Career: 7 vs NJIT (12/5/15)

FG MADE

Season:

Career: 3 at MT (11/13/15)

FG ATTEMPTS

Season:

Career: 8 at MT (11/13/15)

3 PT FG MADE

Season:

Career:

3 PT FG ATTEMPTS

Season:

Career:

FT MADE

Season:

Career: 4 vs Norfolk State (11/16/15)

FT ATTEMPTS

Season:

Career: 4, 2x last vs Tulane (11/28/15)

ASSISTS

Season:

Career: 1

BLOCKS

Season:

Career: 2

STEALS

Season:

Career: 3

VIRGINIA CAREER STATISTICS

Year	G-GS	Min/Avg	FG-FGA	Pct.	3FG-A	Pct.	FT-FTA	Pct.	O-D	T	Avg.	Pf-DQ	Ast	TO	Blk	St	Pts	Avg
2015-16	33-1	572/17.3	37-101	.366	0-3	.000	24-32	.750	30-57	87	2.6	69-2	21	43	19	18	98	3.0

12 BREYANA MASON



5-8 • Senior • Guard • Woodbridge, Va. • Forest Park High School

AT VIRGINIA 2016-17

- Scored 18 points in the win over Rutgers, including making five free throws in the final 30 seconds to seal the win

2015-16

- ACC All-Academic Team
- Third on the team in scoring, averaging 10.0 points per game, third in rebounding (3.8 per game) and second in assists (7.8)
- Averaged 12.3 points and 4.3 rebounds per game in ACC contests
- Hit a buzzer-beating halfcourt shot to end the 3Q against Richmond (12/29), scoring seven points with a career-high eight rebounds and five assists

2014-15

- ACC All-Academic Team
- Fourth in the ACC in assist-turnover ratio with 1.80 per game
- Seventh in the ACC in assists with 3.5 per game

2016-17 GAME-BY-GAME

Opponent	GS	FG-FGA	3FG-3FGA	FT-FTA	Off-Def	Total Reb	PF	Points	A	TO	Blk	Stl	Min
MIDD TENN	*	5-16	1-3	1-1	0-2	2	1	12	2	3	0	2	38
COPPIN	*	2-8	0-2	0-0	0-7	7	1	4	2	0	0	1	26
at Richmond	*	3-9	2-4	0-0	0-2	2	2	8	4	2	0	2	37
RUTGERS	*	5-9	3-5	5-6	0-3	3	2	18	2	2	0	4	35
vs. St. Johns													
vs. Nebraska													
at Northwestern													
at Bowling Green													
UIC													
at Georgia													
UMES													
UMBC													
DAYTON													
at Syracuse													
LOUISVILLE													
at UNC													
BC													
at Clemson													
at Pitt													
VT													
at UND													
GT													
DUKE													
at Miami													
WAKE													
FSU													
at VT													
at Louisville													
NC STATE													

SINGLE GAME BESTS

POINTS

Season: 18 vs Rutgers (11/20)
 Career: 22 vs Ohio State (11/14/14)

REBOUNDS

Season: 7 vs Coppin State (11/13)
 Career: 8 vs Richmond (12/29/15)

FG MADE

Season: 5 (2x)
 Career: 10 at Georgia Tech (1/17/16)

FG ATTEMPTS

Season: 16 vs Middle Tennessee (11/13)
 Career: 17 vs ODU (3/19/15)

3 PT FG MADE

Season: 3 vs Rutgers (11/20)
 Career: 5 vs Ohio State (11/14/14)

3 PT FG ATTEMPTS

Season: 5 vs Rutgers (11/20)
 Career: 7 vs Ohio State (11/14/14)

FT MADE

Season: 5 vs Rutgers (11/20)
 Career: 6 (2x) last vs Green Bay (11/26/15)

FT ATTEMPTS

Season: 6 vs Rutgers (11/20)
 Career: 6 (3x)

FT PERCENTAGE

Season: 5-6 vs Rutgers (11/20)
 Career: 6-6 (2x) last vs Green Bay (11/26/15)

ASSISTS

Season: 4 at Richmond (11/16)
 Career: 8 at UNC (02/26/15)

BLOCKS

Season:
 Career: 2 vs Davidson (12/28/14)

STEALS

Season: 4 vs Rutgers (11/20)
 Career: 5 vs Green Bay (11/26/15)

DOUBLE DOUBLES

Season:
 Career:

VIRGINIA CAREER STATISTICS

Year	G-GS	Min/Avg	FG-FGA	Pct.	3FG-A	Pct.	FT-FTA	Pct.	O-D	T	Avg.	Pf-DQ	Ast	TO	Blk	St	Pts	Avg
2013-14	30-14	553/18.4	39-118	.331	9-19	.474	17-22	.773	10-32	42	1.4	32-0	37	43	0	20	104	3.5
2014-15	31-31	1016/32.8	109-265	.411	27-62	.435	51-62	.823	10-69	79	2.5	42-0	112	60	2	41	296	9.5
2015-16	34-34	1133/33.3	137-328	.418	22-68	.324	43-57	.754	29-99	128	3.8	54-0	78	65	2	52	339	10.0
2016-17	4-4	136/34.0	15-42	.357	6-14	.429	6-7	.857	0-14	14	3.5	6-0	10	7	0	9	42	10.5
TOTAL	99-83	2838/28.7	300-753	.398	64-163	.393	117-148	.791	49-214	263	2.7	134-0	237	175	4	122	781	7.9

21 LAUREN MOSES



6-2 • Junior • Forward • Mount Holly, N.J. • Rancocas High School

AT VIRGINIA

2016-17 SEASON

- Had a double-double with 15 points and 10 rebounds in 23 minutes against Coppin State (11/13)
- Scored a career-high 27 points at Richmond, including 11 pts in the 1st half; made four freethrows in final 21 seconds to put the game away (11/16)

2015-16 SEASON

- Started all 34 games
- 13th in the ACC in rebounding, averaging 6.9 per game
- Four double-doubles, eight double-digit rebounding games and 16 double-digit scoring efforts
- Named to the Paradise Jam All-Tournament Team
- Was named the MVP of the Cavalier Classic Tournament after scoring 17 points on 7-of-8 shooting (starting the game 7-of-7) against Coppin, followed by a double-double with 13 points and a career-high 14 rebounds against Richmond

2014-15

- Appeared in all 31 games with 30 starts
- 13th in the ACC in blocked shots with 1.10 per game

2016-17 GAME-BY-GAME

Opponent	GS	FG-FGA	3FG-3FGA	FT-FTA	Off-Def	Total Reb	PF	Points	A	TO	Blk	Stl	Min
MIDD TENN	*	2-6	0-0	0-0	4-2	6	4	4	4	5	0	3	31
COPPIN	*	7-10	0-0	1-2	5-5	10	3	15	2	1	1	1	23
at Richmond	*	9-14	0-0	9-9	2-2	4	2	27	4	0	0	2	31
RUTGERS	*	5-12	0-0	3-4	2-3	5	1	13	0	3	0	1	35
vs. St. Johns													
vs. Nebraska													
at Northwestern													
at Bowling Green													
UIC													
at Georgia													
UMES													
UMBC													
DAYTON													
at Syracuse													
LOUISVILLE													
at UNC													
BC													
at Clemson													
at Pitt													
VT													
at UND													
GT													
DUKE													
at Miami													
WAKE													
FSU													
at VT													
at Louisville													
NC STATE													

SINGLE GAME BESTS

POINTS

Season: 27 at Richmond (11/16)
Career: 27 at Richmond (11/16/16)

REBOUNDS

Season: 10 vs Coppin State (11/13)
Career: 15 at Boston College (02/14/16)

FG MADE

Season: 9 at Richmond (11/16)
Career: 9 at Richmond (11/16/16)

FG ATTEMPTS

Season: 14 at Richmond (11/16)
Career: 14 at Richmond (11/16/16)

FG SHOOTING

Season:
Career: 7-of-8 vs Coppin St (12/28/15)

FT MADE

Season:
Career: 8 at Wake Forest (1/10/16)

FT ATTEMPTS

Season:
Career: 13 at Wake Forest (1/10/16)

FT PERCENTAGE

Season: 9-9 at Richmond (11/16)
Career: 9-9 at Richmond (11/16)

ASSISTS

Season: 4 (2x)
Career: 4 (2x) last at Richmond (11/16/16)

BLOCKS

Season: 1
Career: 3 (3x)

STEALS

Season: 3 vs Middle Tennessee (11/11)
Career: 6 at Duke (2/4/16)

DOUBLE DOUBLES

Season: 1 vs Coppin State (11/13)
Career: 6, last vs Coppin State (11/13)

VIRGINIA CAREER STATISTICS

Year	G-GS	Min/Avg	FG-FGA	Pct.	3FG-A	Pct.	FT-FTA	Pct.	O-D	T	Avg.	Pf-DQ	Ast	TO	Blk	St	Pts	Avg
2014-15	31-30	731/23.6	77-183	.421	0-1	.000	35-66	.530	66-111	177	5.7	95-5	26	64	34	26	189	6.1
2015-16	34-34	969/28.5	128-293	.437	0-1	.000	65-115	.565	101-135	236	6.9	104-5	33	72	24	52	321	9.4
2016-17	4-4	120/30.0	23-42	.548	0-0	.000	13-15	.867	13-12	25	6.3	10-0	10	9	1	7	59	14.8
TOTAL	69-68	1820/26.4	228-518	.440	0-2	.000	113-196	.577	180-258	438	6.3	209-10	69	145	59	85	569	8.2

4 DOMINIQUE TOUSSAINT



5-9 • Freshman • Gurad • Staten Island, N.Y. • Christ the King

AT VIRGINIA 2016-17

- Was in the starting lineup for her collegiate debut, scoring 16 points with five rebounds

HIGH SCHOOL/CLUB

- 2016 Miss New York Basketball
- 2016 Gatorade New York State Girls' Basketball Player of the Year
- Named to the Jordan Brand Classic 2016 All-American Girls' team, competing for the East squad
- Averaged 19.7 points, 6.8 rebounds, 3.5 assists and 2.7 steals per game in her senior season at Christ the King
- 2015 Queens Player of the Year, MSG Tri-State Second Team and CHSAA Sportsmanship Player of the Year
- Competed at the 2016 USA Basketball Women's U18 National Team Trials in May of 2016 as well as the 2013 U16 and 2014 U17 trials
- ESPN-W's No. 48 overall recruit and No. 12 at her position and ranked at No. 25 by Prospect Nation in the 2016 class

SINGLE GAME BESTS

POINTS

Season: 16 vs Middle Tennessee (11/11)

REBOUNDS

Season: 9 at Richmond (11/16)

FG MADE

Season: 5 vs Middle Tennessee (11/11)

FG ATTEMPTS

Season: 12 vs Middle Tennessee (11/11)

3 PT FG MADE

Season: 2

3 PT FG ATTEMPTS

Season: 4

FT MADE

Season: 4

FT ATTEMPTS

Season: 8

ASSISTS

Season: 5 vs Coppin State (11/13)

BLOCKS

Season:

STEALS

Season: 3 vs Coppin State (11/11)

2016-17 GAME-BY-GAME

Opponent	GS	FG-FGA	3FG-3FGA	FT-FTA	Off-Def	Total Reb	PF	Points	A	TO	Blk	Stl	Min
MIDD TENN	*	5-12	2-4	4-8	1-4	5	2	16	2	3	0	2	33
COPPIN	*	2-7	0-1	1-2	2-1	3	4	5	5	2	1	3	24
at Richmond	*	4-10	2-4	0-0	3-6	9	5	10	4	3	0	1	30
RUTGERS	*	1-4	0-2	0-0	1-1	2	2	2	2	3	0	0	21
vs. St. Johns													
vs. Nebraska													
at Northwestern													
at Bowling Green													
UIC													
at Georgia													
UMES													
UMBC													
DAYTON													
at Syracuse													
LOUISVILLE													
at UNC													
BC													
at Clemson													
at Pitt													
VT													
at UND													
GT													
DUKE													
at Miami													
WAKE													
FSU													
at VT													
at Louisville													
NC STATE													

VIRGINIA CAREER STATISTICS

Year	G-GS	Min/Avg	FG-FGA	Pct.	3FG-A	Pct.	FT-FTA	Pct.	O-D	T	Avg.	Pf-DQ	Ast	TO	Blk	St	Pts	Avg
2016-17	4-4	108/27.0	12-33	.364	4-11	.364	5-10	.500	7-12	19	4.8	13-1	13	11	1	6	33	8.3

13 JOCELYN WILLOUGHBY



6-0 • Freshman • Guard • East Orange, N.J. • Newark Academy

AT VIRGINIA

2016-17

- Was in the starting lineup for her collegiate debut against Middle Tennessee, scoring 13 points with a game-high nine rebounds (11/11)
- Started the Coppin State game going 8-of-8, scoring all 21 of her points in the first half (11/13)

HIGH SCHOOL/CLUB

- 2016 Gatorade New Jersey Girl's Basketball Player of the Year
- 2016 MaxPreps All-America Fourth Team
- Two-time First Team All-State and All-County
- Averaged 21.9 points, 12.8 rebounds, 3.9 blocks, 3.8 assists and 3.1 steals per contest her senior season
- Became the first player at Newark Academy I to score 1,000 career points, doing so in her sophomore season.
- As a freshman and sophomore, she helped lead Newark to two-straight seasons with 21-or-more wins and back-to-back Prep B girls' basketball state titles.
- Ranked the No. 8 wing in her class and No. 47 player overall by ESPN-W and No. 5 at her position and No. 28 overall by Prospects Nation

SINGLE GAME BESTS

POINTS

Season: 21 vs. Coppin State (11/13)

REBOUNDS

Season: 9 vs Middle Tennessee (11/11)

FG MADE

Season: 8 vs Coppin State (11/11)

FG ATTEMPTS

Season: 10 vs Coppin State (11/11)

3 PT FG MADE

Season: 2

3 PT FG ATTEMPTS

Season: 2

FT MADE

Season: 7 vs Middle Tennessee (11/11)

FT ATTEMPTS

Season: 8 vs Middle Tennessee (11/11)

ASSISTS

Season: 3

BLOCKS

Season: 2 vs Coppin State (11/31)

STEALS

Season: 1

DOUBLE DOUBLES

Season: 1

2016-17 GAME-BY-GAME:

Opponent	GS	FG-FGA	3FG-3FGA	FT-FTA	Off-Def	Total Reb	PF	Points	A	TO	Blk	Stl	Min
MIDD TENN	*	3-11	0-2	7-8	5-4	9	3	13	0	6	0	1	36
COPPIN	*	8-10	2-2	3-4	1-3	4	2	21	3	3	2	1	29
at Richmond	*	1-9	0-0	1-3	3-4	7	3	3	2	3	2	0	36
RUTGERS	*	2-9	2-5	3-3	1-3	4	2	9	3	3	0	0	38
vs. St. Johns													
vs. Nebraska													
at Northwestern													
at Bowling Green													
UIC													
at Georgia													
UMES													
UMBC													
DAYTON													
at Syracuse													
LOUISVILLE													
at UNC													
BC													
at Clemson													
at Pitt													
VT													
at UND													
GT													
DUKE													
at Miami													
WAKE													
FSU													
at VT													
at Louisville													
NC STATE													

VIRGINIA CAREER STATISTICS

Year	G-GS	Min/Avg	FG-FGA	Pct.	3FG-A	Pct.	FT-FTA	Pct.	O-D	T	Avg.	Pf-DQ	Ast	TO	Blk	St	Pts	Avg
2016-17	4-4	139/34.8	14-39	.359	4-9	.444	14-18	.778	10-14	24	6.0	10-0	8	15	4	2	46	11.5

**2016-17 Virginia Women's Basketball
Virginia Combined Team Statistics (as of Nov 20, 2016)
All games**

RECORD:	OVERALL	HOME	AWAY	NEUTRAL
ALL GAMES	4-0	3-0	1-0	0-0
CONFERENCE	0-0	0-0	0-0	0-0
NON-CONFERENCE	4-0	3-0	1-0	0-0

#	Player	gp-gs	min	avg	Total		3-Point		F-Throw		Rebounds					pts	avg					
					fg-fga	fg%	3fg-fga	3fg%	ft-fa	ft%	off	def	tot	avg	pf			dq	a	to	blk	stl
21	Lauren Moses	4-4	120	30.0	23-42	.548	0-0	.000	13-15	.867	13	12	25	6.3	10	0	10	9	1	7	59	14.8
13	Jocelyn Willoughby	4-4	139	34.8	14-39	.359	4-9	.444	14-18	.778	10	14	24	6.0	10	0	8	15	4	2	46	11.5
23	Aliyah Huland El	4-4	113	28.3	16-32	.500	7-16	.438	5-8	.625	9	5	14	3.5	9	0	15	14	3	5	44	11.0
12	Breyana Mason	4-4	136	34.0	15-42	.357	6-14	.429	6-7	.857	0	14	14	3.5	6	0	10	7	0	9	42	10.5
04	Dominique Toussaint	4-4	108	27.0	12-33	.364	4-11	.364	5-10	.500	7	12	19	4.8	13	1	13	11	1	6	33	8.3
30	Felicia Aiyeotan	4-0	50	12.5	12-17	.706	0-0	.000	5-6	.833	7	10	17	4.3	6	0	3	3	15	0	29	7.3
10	J'Kyra Brown	4-0	76	19.0	7-18	.389	6-13	.462	5-6	.833	2	8	10	2.5	6	0	11	3	0	2	25	6.3
14	Lisa Jablonowski	3-0	34	11.3	4-10	.400	0-2	.000	0-0	.000	7	4	11	3.7	1	0	1	2	0	1	8	2.7
02	Jae'Lisa Allen	3-0	24	8.0	2-5	.400	0-0	.000	1-1	1.000	0	3	3	1.0	4	0	0	1	0	0	5	1.7
Team											8	12	20					1				
Total.....		4	800		105-238	.441	27-65	.415	54-71	.761	63	94	157	39.2	65	1	71	66	24	32	291	72.8
Opponents.....		4	800		72-213	.338	21-69	.304	36-54	.667	54	83	137	34.2	86	-	42	84	11	28	201	50.2

TEAM STATISTICS	VA	OPP	Date	Opponent	Score	Att.
SCORING	291	201	11/11/16	MIDDLE TENNESSEE	w 63-51	2837
Points per game	72.8	50.2	11/13/16	COPPIN STATE	w 103-40	3590
Scoring margin	+22.5	-	11/16/16	at Richmond	w 63-56	653
FIELD GOALS-ATT	105-238	72-213	11/20/16	RUTGERS	w 62-54	2621
Field goal pct	.441	.338	* - Conference game			
3 POINT FG-ATT	27-65	21-69				
3-point FG pct	.415	.304				
3-pt FG made per game	6.8	5.3				
FREE THROWS-ATT	54-71	36-54				
Free throw pct	.761	.667				
F-Throws made per game	13.5	9.0				
REBOUNDS	157	137				
Rebounds per game	39.2	34.2				
Rebounding margin	+5.0	-				
ASSISTS	71	42				
Assists per game	17.8	10.5				
TURNOVERS	66	84				
Turnovers per game	16.5	21.0				
Turnover margin	+4.5	-				
Assist/turnover ratio	1.1	0.5				
STEALS	32	28				
Steals per game	8.0	7.0				
BLOCKS	24	11				
Blocks per game	6.0	2.8				
ATTENDANCE	9048	653				
Home games-Avg/Game	3-3016	1-653				
Neutral site-Avg/Game	-	0-0				

Score by Periods	1st	2nd	3rd	4th	Totals
Virginia	78	71	71	71	291
Opponents	50	39	64	48	201



Official Basketball Box Score -- Game Totals -- Final Statistics
Middle Tennessee vs Virginia
11/11/16 7 p.m. at Charlottesville, Va.



Middle Tennessee 51 • 0-1

#	Player	Total		3-Ptr		Rebounds			PF	TP	A	TO	Blk	Stl	Min
		FG	FGA	FG	FGA	Off	Def	Tot							
00	JOHNSON, Alex	f	6-13	0-0	1-3	2	3	5	0	13	1	5	1	1	30
23	LYON, Gabby	f	2-3	0-0	3-4	3	3	6	4	7	2	1	0	2	24
05	SISSOM, Abbey	g	2-9	1-5	0-0	1	1	2	3	5	2	3	0	2	33
14	COLLIER, Katie	g	2-6	1-3	0-0	1	2	3	5	5	3	1	0	0	18
20	PETTY, Ty	g	3-12	2-9	3-3	0	2	2	2	11	1	4	0	0	40
03	ALLISON, Kyla	g	0-1	0-0	0-0	0	1	1	0	0	0	0	0	0	3
12	LOURO, Jess	g	0-4	0-4	0-0	2	1	3	4	0	1	0	0	1	19
13	MAJORS, Jordan	g	2-3	0-0	0-0	1	2	3	1	4	0	1	1	0	7
24	REUTER, Rebecca	g	2-5	0-0	0-0	3	2	5	4	4	2	7	0	0	19
35	SAVAGE, Charity	g	1-2	0-1	0-0	0	0	0	2	1	2	0	0	0	7
Team						3	6	9							
Totals			20-58	4-22	7-10	16	23	39	25	51	13	24	2	6	200

1st FG %:	6-16	37.5%	2nd:	3-12	25.0%	3rd:	6-12	50.0%	4th:	5-18	27.8%	Game:	20-58	34.5%	Deadball	
3FG %:	0-5	0.0%	0-5	0.0%	3-4	75.0%	1-8	12.5%	4-22	18.2%	0-1	0.0%	2-13	15.4%	Rebounds	2
FT %:	2-2	100.0%	1-1	100.0%	1-3	33.3%	3-4	75.0%	7-10	70.0%	3-8	37.5%	14-26	53.8%		

Virginia 63 • 1-0

#	Player	Total		3-Ptr		Rebounds			PF	TP	A	TO	Blk	Stl	Min
		FG	FGA	FG	FGA	Off	Def	Tot							
21	Lauren Moses	f	2-6	0-0	0-0	4	2	6	4	4	4	5	0	3	31
04	Dominique Toussaint	g	5-12	2-4	4-8	1	4	5	2	16	2	3	0	2	33
12	Breyana Mason	g	5-16	1-3	1-1	0	2	2	1	12	2	3	0	2	38
13	Jocelyn Willoughby	g	3-11	0-2	7-8	5	4	9	3	13	0	6	0	1	36
23	Aliyah Huland El	g	3-3	1-1	2-4	1	2	3	3	9	0	4	0	0	22
02	Jae'Lisa Allen	g	0-1	0-0	0-0	0	0	0	0	0	0	0	0	0	1
10	J'Kyra Brown	g	0-3	0-2	1-2	1	4	5	1	1	4	0	0	1	19
14	Lisa Jablonowski	g	2-3	0-0	0-0	2	2	4	0	4	0	2	0	1	11
30	Felicia Aiyeeotan	g	1-3	0-0	2-2	2	0	2	1	4	2	0	4	0	9
Team						4	3	7							
Totals			21-58	4-12	17-25	20	23	43	15	63	14	23	4	10	200

1st FG %:	2-11	18.2%	2nd:	7-19	36.8%	3rd:	7-18	38.9%	4th:	5-10	50.0%	Game:	21-58	36.2%	Deadball	
3FG %:	0-4	0.0%	1-2	50.0%	3-6	50.0%	0-0	0.0%	4-12	33.3%	2-4	50.0%	9-11	81.8%	Rebounds	2
FT %:	7-10	70.0%	7-8	87.5%	1-1	100.0%	2-6	33.3%	17-25	68.0%	1-1	100.0%	16-21	76.2%		1

Officials: Dee Kantner, Pualani Spurlock, Keith Miller
 Technical fouls: Middle Tennessee-None. Virginia-None.
 Attendance: 2837
 MTSU: 14 Collier fouled out at 1:44 (IV)

Score by periods	1st	2nd	3rd	4th	Total
Middle Tennessee	14	7	16	14	51
Virginia	11	22	18	12	63

Points	In	Off	2nd	Fast	Bench
MT	Paint	T/O	Chance	Break	
VA	26	20	11	2	10
	26	16	13	6	9

Last FG - MT 4th-00:07, VA 4th-01:11.
 Largest lead - MT by 3 1st-00:15, VA by 20 3rd-04:01.
 MT led for 06:07, VA led for 28:43. Game was tied for 05:10.

Score tied - 6 times.
 Lead changed - 6 times.

Official Basketball Box Score -- Game Totals -- Final Statistics
Coppin State vs Virginia
11/13/16 2 p.m. at Charlottesville, Va.

Coppin State 40 • 0-2

#	Player	Total		3-Ptr		Rebounds			PF	TP	A	TO	Blk	Stl	Min
		FG	FGA	FG	FGA	Off	Def	Tot							
02	LUCAS, Genesis	*	3-17	1-3	3-4	0	6	6	4	10	2	4	0	3	40
14	GOODE, Tiara	*	1-6	0-2	0-0	1	2	3	3	2	0	2	0	1	30
20	NEAL, Vanessa	*	1-9	0-4	0-2	0	1	1	5	2	2	3	0	3	24
21	SAMUELS, Keena	*	3-10	1-3	0-0	0	2	2	5	7	2	8	0	1	29
24	TAYLOR, Alexis	*	0-0	0-0	0-0	1	1	2	2	0	0	2	1	0	7
01	CROOMS, Mia	*	0-1	0-1	2-4	0	0	0	1	2	0	0	0	0	9
12	OLOYEDE, Oluwadamilol	*	0-2	0-0	4-6	2	1	3	2	4	1	2	0	0	13
23	GRAHAM, Chance	*	4-11	0-0	5-8	5	4	9	0	13	1	3	1	2	38
25	PICKETT, Jordan Meaur	*	0-0	0-0	0-2	1	1	2	3	0	0	0	0	0	10
Team						4	3	7							
Totals			12-56	2-13	14-26	14	21	35	25	40	8	24	2	10	200

1st FG %:	4-15	26.7%	2nd:	5-15	33.3%	3rd:	2-11	18.2%	4th:	1-15	6.7%	Game:	12-56	21.4%	Deadball	
3FG %:	1-6	16.7%	0-4	0.0%	1-2	50.0%	0-1	0.0%	9-14	64.3%	3-8	37.5%	2-13	15.4%	Rebounds	7
FT %:	1-2	50.0%	1-2	50.0%	1-2	50.0%	1-1	100.0%	14-26	53.8%						

Virginia 103 • 2-0

#	Player	Total		3-Ptr		Rebounds			PF	TP	A	TO	Blk	Stl	Min
		FG	FGA	FG	FGA	Off	Def	Tot							
04	Dominique Toussaint	*	2-7	0-1	1-2	2	1	3	4	5	5	2	1	3	24
12	Breyana Mason	*	2-8	0-2	0-0	0	7	7	1	4	2	0	0	1	26
13	Jocelyn Willoughby	*	8-10	2-2	3-4	1	3	4	2	21	3	3	2	1	29
21	Lauren Moses	*	7-10	0-0	1-2	5	5	10	3	15	2	1	1	1	23
23	Aliyah Huland El	*	4-13	1-5	3-4	3	1	4	2	12	10	5	0	3	31
02	Jae'Lisa Allen	*	2-4	0-0	1-1	0	3	3	4	5	0	1	0	0	20
10	J'Kyra Brown	*	5-8	4-5	4-4	0	4	4	2	18	3	1	0	1	25
30	Felicia Aiyeeotan	*	10-12	0-0	3-4	5	7	12	3	23	0	2	6	0	22
Team						0	3	3							
Totals			40-72	7-15	16-21	16	34	50	21	103	25	15	10	10	200

1st FG %:	12-22	54.5%	2nd:	10-18	55.6%	3rd:	9-19	47.4%	4th:	9-13	69.2%	Game:	40-72	55.6%	Deadball	
3FG %:	2-5	40.0%	1-3	33.3%	2-4	50.0%	2-3	66.7%	9-11	81.8%	16-21	76.2%			Rebounds	1
FT %:	5-7	71.4%	1-2	50.0%	1-1	100.0%										

Officials: Luis Gonzalez, Shannon Feck, Rashan Michel
 Technical fouls: Coppin State-None. Virginia-None.
 Attendance: 3590
 CS: 20 fouled out at 3:33 (III)
 CS: 21 fouled out at 6:59 (IV)

Score by periods	1st	2nd	3rd	4th	Total
Coppin State	10	11	14	5	40
Virginia	31	22	21	29	103

Points	In	Off	2nd	Fast	Bench
CSUW	Paint	T/O	Chance	Break	
VA	50	9	7	2	19
	50	35	15	2	46

Last FG - CSUW 4th-03:54, VA 4th-01:35.
 Largest lead - CSUW None, VA by 63 4th-00:59.
 CSUW led for 00:00, VA led for 39:55. Game was tied for 00:05.

Score tied - 0 times.
 Lead changed - 0 times.

Official Basketball Box Score -- Game Totals -- Final Statistics
Virginia vs Richmond
11/16/16 7:00 pm at Richmond, Va. (Robins Center)

Virginia 63 • 3-0

#	Player	Total		3-Ptr		Rebounds			PF	TP	A	TO	Blk	Stl	Min
		FG	FGA	FG	FGA	Off	Def	Tot							
21	Lauren Moses	f	9-14	0-0	9-9	2	2	4	2	27	4	0	0	2	31
04	Dominique Toussaint	g	4-10	2-4	0-0	3	6	9	5	10	4	3	0	1	30
12	Breyana Mason	g	3-9	2-4	0-0	0	2	2	2	8	4	2	0	2	37
13	Jocelyn Willoughby	g	1-9	0-0	1-3	3	4	7	3	3	2	3	2	0	36
23	Aliyah Huland El	g	3-6	1-3	0-0	1	0	1	1	7	2	1	1	1	22
02	Jae'Lisa Allen	g	0-0	0-0	0-0	0	0	0	0	0	0	0	0	0	3
10	J'Kyra Brown	g	2-6	2-5	0-0	1	0	1	3	6	2	0	0	0	24
14	Lisa Jablonowski	g	1-2	0-1	0-0	1	0	1	0	2	0	0	0	0	7
30	Felicia Aiyeeotan	g	0-1	0-0	0-0	0	0	0	0	0	0	0	3	0	10
Team						3	4	7							
Totals			23-57	7-1											

OPPONENT	AIYEOTAN	ALLEN	BROWN	HULAND EL	JABLONOWSKI	JONES
MIDD TENN	4-2-2	0-0-0	1-5-4	9-3-0	4-4-0	INJ
COPPIN	23-12-0	5-3-0	18-4-3	12-4-10	DNP	INJ
at Richmond	0-0-0	0-0-0	6-1-2	7-1-2	2-1-0	INJ
RUTGERS	2-3-1	DNP	0-0-2	16-6-3	2-6-1	INJ
vs. St. Johns						
vs. Nebraska						
at Northwestern						
at Bowling Green						
UIC						
at Georgia						
UMES						
UMBC						
DAYTON						
at Syracuse						
LOUISVILLE						
at UNC						
BC						
at Clemson						
at Pitt						
VT						
at UND						
GT						
DUKE						
at Miami						
WAKE						
FSU						
at VT						
at Louisville						
NC STATE						

OPPONENT	MASON	MOSES	PAYNE	TOUSSAINT	WILLOUGHBY
MIDD TENN	12-2-2	4-6-4	DNP	16-5-2	13-9-0
COPPIN	4-7-2	15-10-2	DNP	5-3-5	21-4-3
at Richmond	8-2-4	27-4-4	DNP	10-9-4	3-7-2
RUTGERS	18-3-2	13-5-0	DNP	2-2-2	9-4-3
vs. St. Johns					
vs. Nebraska					
at Northwestern					
at Bowling Green					
UIC					
at Georgia					
UMES					
UMBC					
DAYTON					
at Syracuse					
LOUISVILLE					
at UNC					
BC					
at Clemson					
at Pitt					
VT					
at UND					
GT					
DUKE					
at Miami					
WAKE					
FSU					
at VT					
at Louisville					
NC STATE					

VIRGINIA
OPPONENT

Bench Points	67 (16.8 ppg)	57 (14.3 ppg)
FG Percentage- Home82-181 (.453)	53-160 (.331)
FG Percentage- Road	23-57 (.412)	19-53 (.358)
FG Percentage- Neutral	0-0	
Most Points - Quarter	31 (1st) vs Coppin State	16 (3rd) vs M Tennessee
Fewest Points- Quarter	6 vs Rutgers	5 (4th) vs Coppin State
Fewest Combined Points - Quarter	16 (2nd) vs Rutgers	
Most Points- Half	53 (1st) vs Coppin State	30 (2nd) vs M Tennessee
Fewest Points- Half	28 (1st) vs Rutgers	19 (2nd) vs Coppin State
Largest Halftime Lead	32 vs Coppin State	
Largest Halftime Deficit		

VIRGINIA'S RECORD WHEN

Game decided by 10 pts or less	2-0
Leading at halftime	4-0
Trailing at halftime	0-0
Tied at halftime	0-0
Went into overtime	0-0
Leading by 10 or more points	4-0
Shot FG 50% or better	1-0
Shot FG less than 50%	3-0
Shot FG less than 40%	2-0
Shot FG 40% or better	2-0
Holding opponent under 60 pts	4-0
Scoring 30-39 points	0-0
Scoring 40-49 points	0-0
Scoring 50-59 points	0-0
Scoring 60-69 points	3-0
Scoring 70-79 points	0-0
Scoring 80-89 points	0-0
Scoring 90-100 points	0-0
Scoring over 100 points	0-0
Outrebounding opponent	3-0
Being outrebounded	1-0
Tied in rebounding	0-0
Have fewer TOs than opponent	4-0
Committing 15 or less TOs	2-0

SCORING BENCHMARKS
GAMES WITH 20 OR MORE POINTS IN 16-17

Jocelyn Willoughby	1
Felicia Aiyeotan	1
Lauren Moses	1

GAMES WITH 10 OR MORE POINTS IN 16-17

Lauren Moses	3
Jocelyn Willoughby	2
Dominique Toussaint	2
Breyana Mason	2
Aliyah Huland El	2
J'Kyra Brown	1
Felicia Aiyeotan	1

GAMES WITH 10 OR MORE REBOUNDS IN 16-17

Lauren Moses	1
Felicia Aiyeotan	1

GAMES WITH 10 OR MORE ASSISTS IN 16-17

Aliyah Huland El	1
----------------------------	---

DOUBLE DOUBLES IN 16-17

Lauren Moses	1
Felicia Aiyeotan	1
Aliyah Huland El	1

VIRGINIA HIGHS
OPPONENT HIGHS

Points	103 vs Coppin State 11/13	56 at Richmond 11/16
FG Made	40 vs Coppin State 11/13	20 vs M Tenn 11/11
FG Attempts	72 vs Coppin State 11/13	58 vs M Tenn 11/11
FG %	.40-72 (.556) vs Coppin State 11/13	.19-53 (.358) at Richmond 11/16
3FG Made	.9 vs Rutgers 11/20	.8 vs Rutgers 11/20
3FG Attempts	21 vs Rutgers 11/20	22 vs M Tenn 11/11
3FG %	.7-15 (.467) vs Coppin State 11/13	.8-16 (.500) vs Rutgers 11/20
Free Throws Made	17 vs M Tenn 11/11	.14 vs Coppin State 11/13
Free Throw Attempts	25 vs M Tenn 11/11	26 vs Coppin State 11/13
Free Throw %	.11-13 (.846) vs Rutgers 11/20	.11-13 (.846) at Richmond 11/16
Rebounds	50 vs Coppin State 11/13	39 vs M Tenn 11/11
Assists	25 vs Coppin State 11/13	.13 vs M Tenn 11/11
Steals	10 (2x)	.10 vs Coppin State 11/13
Blocked Shots	10 vs Coppin State 11/13	.4 vs Rutgers 11/20
Turnovers	23 vs M Tenn 11/11	24 (2x)
Fouls	21 vs Coppin State 11/13	25 (2x)

VIRGINIA LOWS
OPPONENT LOWS

Points	62 vs Rutgers 11/20	40 vs Coppin St 11/13
FG Made	21 (2x)	.12 vs Coppin St 11/13
FG Attempts	51 vs Rutgers 11/20	26 vs Coppin St 11/13
FG %	.21-58 (.362) vs M Tenn 11/11	.214 (12-56) vs Coppin St 11/13
3FG Made	4 vs M Tenn 11/11	2 vs Coppin St 11/13
3FG Attempts	12 vs M Tenn 11/11	.13 vs Coppin St 11/13
3FG %	.333 (4/12) vs M Tenn 11/11	.154 (2-13) vs Coppin St 11/13
Free Throws Made	10 at Richmond 11/16	.4 vs Rutgers 11/20
Free Throw Attempts	12 at Richmond 11/16	.5 vs Rutgers 11/20
Free Throw %	.680 (17/25) vs M Tenn 11/11	.538 (14-26) vs Coppin St 11/13
Rebounds	32 at Richmond 11/16	.25 vs Rutgers 11/20
Assists	14 vs M Tenn 11/11	8 vs Coppin St 11/13
Steals	6 (2x)	.6 vs M Tenn 11/11
Blocked Shots	4 vs M Tenn 11/11	2 (2x)
Turnovers	10 at Richmond 11/16	16 at Richmond 11/16
Fouls	13 vs Rutgers 11/20	.17 at Richmond 11/16

VIRGINIA INDIVIDUAL HIGHS
OPPONENT INDIVIDUAL HIGHS

Points	.27 Moses at Richmond 11/16	18 Parson at Richmond 11/16
FG Made	10 Aiyeotan vs Coppin St 11/13	6 (2x)
FG Attempts	16 Mason vs M Tenn 11/11	.17 Lucas vs Coppin St 11/13
FG %	.833 (10-12) Aiyeotan vs Coppin St 11/13	.462 (6-13) Johnson vs M Tenn 11/11
3FG Made	4 (2x)	.3 Tolson at Richmond 11/16
3FG Attempts	7 Huland El vs Rutgers 11/20	.9 Petty vs M Tenn 11/11
3FG Percentage	.800 (4-5) Brown vs Coppin St 11/13	.428 (3-7) Tolson at Richmond 11/16
	.2-2 Willoughby vs Coppin St 11/13	
FT Made	.9 Moses at Richmond 11/16	5 Graham vs Coppin St 11/13
FT Attempts	.9 Moses at Richmond 11/16	8 Graham vs Coppin St 11/13
FT Percentage	9-9 Moses at Richmond 11/16	4-4 Parson at Richmond 11/16
Rebounds	12 Aiyeotan vs Coppin St 11/13	9 Graham vs Coppin St 11/13
Assists	10 Huland El vs Coppin St 11/13	6 Parson at Richmond 11/16
Steals	4 Mason vs Rutgers 11/20	4 Sanders vs Rutgers 11/20
Blocked Shots	6 Aiyeotan vs Coppin St 11/13	2
Turnovers	6 Willoughby vs M Tenn 11/11	8 Sameuls vs Coppin St 11/13

VIRGINIA INDIVIDUALS

- **Two UVA players with double-doubles in the same game:** vs Coppin State 11/13/16 (Moses 15-10r, Huland El 12-10a, Aiyeotan 23-12r)
- **Four players in double figures:** vs Coppin State 11/13/16 (Willoughby 21, Moses 15, Huland El 12, Brown 18, Aiyeotan 23)
- **Five players in double figures:** vs Coppin State 11/13/16 (Willoughby 21, Moses 15, Huland El 12, Brown 18, Aiyeotan 23)
- **Six players in double figures:** vs Norfolk State 11/16/15 (Randolph 17, Moses 12, Brown 11, Venson 10, Mason 10, Huland El 10, Jones 10)
- **Seven players in double figures:** vs Norfolk State 11/16/15 (Randolph 17, Moses 12, Brown 11, Venson 10, Mason 10, Huland El 10, Jones 10)
- **Scored 20 points:** 27, Lauren Moses at Richmond, 11/16/16
- **Scored 25 points:** 27, Lauren Moses at Richmond, 11/16/16
- **Scored 30 points:** 34, Monica Wright vs. Green Bay, 03/21/10
- **Scored 40 points:** **48, Mimi Kennedy at North Carolina, 01/15/98
- **A non-starter scored 20 or more points:** 23, Felicia Aiyeotan vs Coppin State 11/13/16
- **Two or more Hoos scored 20 or more points in the same game:** vs Coppin State (Willoughby 21, Aiyeotan 23)
- **Perfect from the field (5 attempts):** 7-7, Imovbioh vs Louisville 03/01/15
- **Perfect at FT line (10 attempts):** 11-11, Monica Wright vs North Carolina, 02/15/10
- **Perfect at FT line (9 attempts):** 9-9, Lauren Moses at Richmond 11/16/16
- **Perfect at FT line (8 attempts):** 9-9, Lauren Moses at Richmond 11/16/16
- **Had 20 Free throw attempts:** **20, Brandi Teamer at Wake Forest, 01/6/05
- **Had 15 rebounds:** 15, Lauren Moses at Boston College 02/14/16
- **Had 20 rebounds:** 24, Sarah Imovbioh vs Ohio State 11/14/14
- **Had 10 assists:** 10, Aliyah Huland El 11/13/16
- **Had 6 steals:** 6, Kelsey Wolfe at Miami, 01/06/13
- **Blocked 5 shots:** 6, Felicia Aiyeotan 11/13/16

VIRGINIA TEAM

- **UVA ranked in AP Top 25:** #22, 11/21/12
- **UVA ranked USA Today Top 25:** #22, 3/8/10
- **Played AP No. 1 team:** #1 Duke, L 79-58, 3/2/07
- **Defeated AP No. 1 team:** #1 Maryland, 75-74, 2/11/92
- **Defeated AP Top 10 team:** #8 Louisville, 75-59, 03/01/15
- **Defeated AP Top 25 team:** #22 Miami, 76-56, 01/03/16

FIELD GOAL SHOOTING

- **Shot 50 percent:** .556 (40-72) vs Coppin State, 11/13/16
- **Shot 60 percent:** .623 (33-53) vs Georgia Tech, 3/02/08
- **Shot 70 percent:** **.700 (42-60) at Wake Forest, 1/07/87
- **Made 40-49 field goals:** 40 vs. Coppin State, 11/13/16
- **Made 50 field goals:** **54 vs Cleveland State, 11/29/95
- **Attempted 60-69 FG:** 72 vs Coppin State, 11/13/16
- **Attempted 70-79 FG:** 72 vs Coppin State, 11/13/16
- **Attempted 80 FG:** 85 at NC State, 2/10/11

THREE-POINT SHOOTING

- **Shot 50 percent:** .667 (6-9) vs Miami 01/03/16
- **Shot 60 percent:** .667 (6-9) vs Miami 01/03/16
- **Shot 70 percent:** .750 (6-8) vs Louisville 03/01/15
- **Shot 80 percent:** .857 (6-7) vs St. John's, 03/19/88
- **Made 10 three-pt. field goals:** 10 at Clemson 2/01/15
- **Attempted 20 three-pt. FG:** 26 (made 13) vs BC 1/15/15

FREE THROW SHOOTING

- **Shot 80 percent:** .846 (11-13) vs Rutgers, 11/20/16
- **Shot 90 percent:** .938 (15-16) vs UNC, 02/25/16
- **Shot 100 percent:** 2-2 at Duke, 2/4/16
- **Made 20 free throws:** 21 vs Pitt 01/24/16
- **Made 30 free throws:** 30 vs. North Carolina, 02/20/14
- **Attempted 30 FT:** 33 vs Louisville 03/01/15
- **Attempted 40 FT:** 44 vs. Indiana, 11/26/09
- **Attempted 50 FT:** **54 at Wake Forest, 01/6/05

SCORING

- **Scored 80 points:** 103 vs Coppin State, 11/13/16
- **Scored 90 points:** 103 vs Coppin State, 11/13/16
- **Scored 100 points:** 103 vs Coppin State, 11/13/16

REBOUNDING

- **Had 50 rebounds:** 50 vs Coppin State 11/13/16
- **Had 60 rebounds:** 63 at Alabama, 12/21/12
- **Had 70 rebounds:** **77 vs. Rider, 12/19/96

ASSISTS

- **Had 20 assists:** 25 vs Coppin State, 11/13/16
- **Had 30 assists:** **37 vs. Cleveland State, 11/29/95

STEALS

- **Had 15 steals:** 15 at Wake, 01/10/16
- **Had 20 steals:** 22 vs UMEs, 12/17/13
- **Had 25 steals:** 26 vs. Clemson, 02/12/12
- **UVA forced 30 turnovers:** 31 at Wake, 01/10/16
- **UVA committed 30 turnovers:** 32 at Alabama, 12/21/12

MISCELLANEOUS

- **UVA in OT:** L, 68-63 at Pitt 2/19/15
- **UVA in 2OT:** L, 73-70 at Alabama, 12/21/12
- **UVA in 3OT:** W, 105-100 at North Carolina, 01/15/98
- **UVA shot 60% from the floor in first half:** .621 (18-29) at Clemson 2/01/15
- **UVA shot 60% from the floor in second half:** .655 (19-29) at Georgia Tech 1/17/16
- **UVA shot less than 20% from floor first half:** .192 (5-26) at Maryland, 12/06/12
- **UVA shot less than 30% from floor first half:** .267 (8-30) vs Notre Dame 01/07/15
- **UVA shot less than 30% from floor 2nd half:** .219 (7-32) vs Virginia Tech 2/07/16
- **UVA scored less than 15 points in first half:** 13 at Florida State, 01/8/06
- **UVA held opp to less than 15 points first half:** 14 vs. Virginia Tech, 01/03/13
- **UVA held opp to less than 10 points first half:** 6 vs. Norfolk State, 12/28/12
- **UVA held opponent to less than 30 points:** 23 vs. Norfolk State, 12/28/12
- **UVA failed to make at least one three-pointer:** 0-10 vs. Kansas State, 11/29/13
- **Opponent failed to make at least one three-pointer:** 0-9 at Louisville, 01/18/15

**school record


2
JAE'LISA ALLEN

 Forward • Junior
 6-2
 White Hall High
 Pine Bluff, Ark.

4
DOMINIQUE TOUSSAINT

 Guard • Freshman
 5-9
 Christ the King
 Staten Island, N.Y.

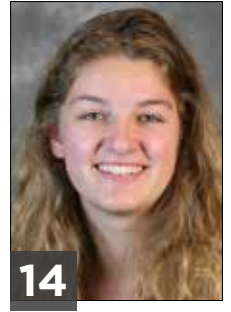
10
J'KYRA BROWN

 Guard • Junior
 5-11
 Rocky Mount High
 East Carolina Univ.
 Rocky Mount, N.C.

12
BREYANA MASON

 Guard • Senior
 5-8
 Forest Park High
 Woodbridge, Va.

13
JOCELYN WILLOUGHBY

 Guard • Freshman
 6-0
 Newark Academy
 East Orange, N.J.

14
LISA JABLONOWSKI

 Forward • Freshman
 6-3
 Lycee des Garcons
 Ernster, Luxembourg

21
LAUREN MOSES

 Forward • Junior
 6-2
 Rancocas High
 Mount Holly, N.J.

23
ALIYAH HULAND EL

 Guard • Junior
 6-1
 Randolph High
 Randolph, N.J.

30
FELICIA AIYEOTAN

 Center • Freshman
 6-9
 Blair Academy (N.J.)
 Lagos, Nigeria

32
MONÉ JONES

 Forward • Sophomore
 6-2
 Riverside High
 Durham, N.C.

35
SHAKYNA PAYNE

 Forward • R-Freshman
 6-1
 SW Atlanta Christian
 Academy
 Acworth, Ga.

JOANNE BOYLE

 Head Coach
 Sixth Season

TIM TAYLOR

 Assistant Coach
 First Season

LA'KESHIA FRETT MEREDITH

 Assistant Coach
 Fourth Season

KATHERINE GRAHAM

 Assistant Coach
 First Season

SARAH HOLSINGER

 Asst. AD/Operations
 Sixth Season