



VIRGINIA

2016-17 VIRGINIA CAVALIER WOMEN'S BASKETBALL GAME NOTES

2016-17 Schedule/Results

Nov. 11	MIDDLE TENN	W, 63-51
Nov. 13	COPPIN STATE	W, 103-40
Nov. 16	at Richmond	W, 63-56
Nov. 20	RUTGERS	W, 62-54
Nov. 25	vs. St. John's^	L, 63-56
Nov. 26	vs. Nebraska^	W, 73-51
Dec. 1	at Northwestern#	L, 69-60
Dec. 4	at Bowling Green	2 p.m.
Dec. 16	ILLINOIS-CHICAGO ^{ACCNE}	7 p.m.
Dec. 19	at Georgia	7 p.m.
Dec. 21	MD EAST SHORE ^{ACCNE}	7 p.m.
Dec. 28	Liberty vs. Dayton [%]	4:30 p.m.
	UMBC ^{% ACCNE}	7 p.m.
Dec. 29	Liberty vs. UMBC [%]	4:30 p.m.
	DAYTON ^{% ACCNE}	7 p.m.
Jan. 2	at Syracuse*	7 p.m.
Jan. 5	LOUISVILLE ^{* ACCNE}	7 p.m.
Jan. 8	at North Carolina*	2 p.m.
Jan. 15	BOSTON COLLEGE ^{* ACCNE}	2 p.m.
Jan. 19	at Clemson*	7 p.m.
Jan. 22	at Pittsburgh ^{* RSN}	12:30 p.m.
Jan. 26	VIRGINIA TECH ^{* ACCNE}	7 p.m.
Jan. 29	at Notre Dame ^{* ESPN}	12 p.m.
Feb. 2	GEORGIA TECH ^{* RSN}	7 p.m.
Feb. 5	DUKE ^{* RSN}	1 p.m.
Feb. 9	at Miami*	7 p.m.
Feb. 12	WAKE FOREST ^{* ACCNE}	2 p.m.
Feb. 16	FLORIDA STATE ^{* RSN}	7 p.m.
Feb. 19	at Virginia Tech ^{* RSN}	3 p.m.
Feb. 23	at Louisville*	7 p.m.
Feb. 26	NC STATE ^{* ACCNE}	2 p.m.

ACC Tournament

March 1-5, 2015

HTC Center, Conway, S.C.

* ACC game

^ South Point Shootout (Las Vegas, Nevada)

% Cavalier Classic Tournament

10th Annual ACC/Big Ten Challenge

[RSN] - ACC Regional Sports Networks

[ESPN] -ESPN

[ACCNE] -ACC Network Extra Streaming

All Times Eastern Rankings are Associated Press

Games #8 • Sunday, Dec. 4, 2016 • 2 p.m.

Stroh Center • Bowling Green, Ohio



NR/RV Virginia Cavaliers (5-2, 0-0 ACC)
at
Bowling Green Falcons (3-4, 0-0 MAC)



Radio: WINA 1070-AM and 98.9 FM: Luke Neer, Chelsea Shine-Wilson

TV: none

- Head coach Joanne Boyle is going for her 300th career win today, with 96 coming at the helm of the Cavaliers
- Virginia has started the season 5-2 for the third-straight year
- The Cavaliers are among the teams receiving votes in the USA Today Coaches' Poll
- UVA is coming off a 69-60 loss at Northwestern in the ACC/Big Ten Challenge. The Cavaliers held a 44-26 lead with 8:02 remaining in the third quarter, but the Wildcats outscored the Cavaliers 43-16 the remainder of the game to come away with the victory.
- Virginia had four players finish the game in double figures, led by 16 points from junior forward Lauren Moses. Senior guard Breyana Mason scored 11 points with six assists
- A different freshman led the team in rebounding in each of the first four games (Jocelyn Willoughby 9 vs. Middle Tennessee, Felicia Aiyeotan 12 vs. Coppin St., Dominique Toussaint 9 at Richmond, Lisa Jablonowski 6 vs. Rutgers). Freshman guard Jocelyn Willoughby currently leads the Cavaliers in rebounding at 5.9 per game
- Willoughby has scored in double figures each of the last three games, including scoring 12 points in 17 minutes against Nebraska, going 6-of-9 from the field
- Felicia Aiyeotan is second in the ACC in blocked shots per game (2.86) and is ranked 13th in the nation while averaging 13.0 minutes per game
- UVA's veteran point guards, senior Breyana Mason and junior J'Kyra Brown, have a combined 45 assists to 22 turnovers (2.05 assist-to-turnover ratio)
- UVA has had fewer turnovers than their opponents in every game this season and has committed 15 or fewer four times
- Junior guard Aliyah Huland El is averaging 15.3 points per game in her last three games
- The Cavaliers are fifth in the ACC and 36th in the nation in scoring defense, allowing 55.3 points per game
- Virginia has held a lead at halftime in all seven games this season

Projected Starting Lineup

G	4	Dominique Toussaint	Fr.	8.6 ppg	4.1 rpg	21 assts/12 stls
• 2016 Gatorade New York State High School Player of the Year and Miss New York Basketball						
G	12	Breyana Mason	Sr.	8.6 ppg	21 rpg	24 assts/12 stls
• Lone senior on the team; 2x ACC All-Academic Team member						
G	13	Jocelyn Willoughby	Fr.	11.3 ppg	5.9 rpg	14 assts/5 stl/5 blk
• 2016 New Jersey Gatorade State High School Player of the Year						
G	23	Aliyah Huland El	Jr.	11.1 ppg	3.4 rpg	17 assts/9 stl/3 blk
• Double-double with 12 points and 10 assists vs Coppin State						
F	21	Lauren Moses	Jr.	14.3 ppg	5.6 rpg	11 assts/10 stls
• Led last year's team in rebounding; career-high 27 points at Richmond						

QUICK FACTS
THE UNIVERSITY OF VIRGINIA

Name.....The University of Virginia
 Founded.....by Thomas Jefferson in 1819
 Nicknames.....Cavaliers, Wahoons, 'Hoos
 Location.....Charlottesville, Va.
 Enrollment.....23,883 (16,673 undergraduate)
 President.....Teresa A. Sullivan (Michigan State '70)
 Athletics Director.....Craig Littlepage (Pennsylvania '73)
 Conference.....Atlantic Coast Conference (ACC)
 Colors.....Orange and Blue
 Official Athletics Websites.....VirginiaSports.com
VirginiaSportsTV.com
 University Website.....virginia.edu

WOMEN'S BASKETBALL INFORMATION

First Season of Basketball.....1973-74
 All-Time Record.....879-430 (44th year)*
 All-Time Home Record.....432-193*
 John Paul Jones Arena.....130-44 (11th season)*
 University Hall.....302-149
 All-Time ACC Record.....343-204 (40 years)*
 Home Facility.....John Paul Jones Arena (14,593)
 Press Row Phone Number.....434-962-0579
 NCAA Tournament Appearances/Last.....24/2010
 NCAA Tournament Record.....33-24
 WNIT Tournament Appearances/Last.....5/2012
 WNIT Tournament Record.....13-8
 2015-16 Record.....18-16
 ACC Record/Finish.....6-10/9th
 Letterwinners Returning/Lost.....7/4
 Starters Returning/Lost.....3/2
 Newcomers.....5

COACHING & SUPPORT STAFF

Head Coach.....Joanne Boyle
 Career Record.....299-167*
 Virginia Record.....95-74*
 Assistant Coach.....La'Keshia Frett Meredith
 Assistant Coach.....Katherine Graham
 Assistant Coach.....Tim Taylor
 Asst AD WBB Operations.....Sarah Holsinger
 Assistant Director of Operations.....Kate Martin
 Video Coordinator.....Andrew Landers
 Athletic Trainer.....Craig Oates
 Strength & Conditioning.....Robb Hornett
 Equipment Manager.....Matt Althoff

* as of 12/2/16

INTERVIEW POLICY

All interview requests for Virginia women's basketball must be made through Melissa Dudek in the Virginia Athletics Media Relations Office. Players' individual phone numbers will not be given to the media at any time. Game day interviews will not be granted until the postgame press conference opportunity. Please give a minimum of 24 hours notice for all interview requests.

UVA VS BOWLING GREEN

- Virginia leads the all-time series 1-0
- This will be the second meeting of the teams, both in the last two seasons
- The only previous meeting was on Dec. 8, 2015. UVA won, 68-39, in JPJ
- The Cavaliers went on a 37-9 run spanning the second and third quarters to break open a 17-12 game
- UVA forced 24 turnovers in the game, including 15 in the first half. The Cavaliers converted the miscues into 28 points. In addition to grabbing 10 steals, the Cavalier press forced three 10-second violations while Moses took two charges in the post
- Virginia shot 41.0 percent (25-of-61) while holding Bowling Green to 27.3 percent shooting (12-of-44). UVA held a 46-31 edge in rebounding

BOWLING GREEN

- Bowling Green has won its last three games entering Sunday's contest
- The Falcons most recently defeated Davis & Elkins, 73-46, at home. Bowling Green shot 36.4 percent (28-77) from the field. Abby Siefker recorded a double-double with 17 points and 13 rebounds
- Carly Santoro leads the team with 13.9 points per game
- Siefker is averaging a team-high 8.9 rebounds per game and leads the MAC with three double-doubles this season
- Bowling Green is out-rebounding its opponents +8.4 boards per game

WBCA GOOD WORKS TEAM NOMINEE

- Senior guard Breyana Mason has been nominated for the 2017 Allstate WBCA Good Works Teams
- The WBCA and NABC Good Works Team recognizes players at all levels of college basketball who have made outstanding contributions in the areas of volunteerism and civic involvement. Mason is among a record 278 total nominees with 97 women's basketball players and 181 men's basketball players, including 64 from Division I, for this year's teams
- Mason has been a leader on and off the court for the Cavaliers. During her time at UVA, she has consistently been involved in community service projects. Mason has spoken to school groups, worked with the Special Olympics and worked Habitat for Humanity builds.
- A two-time member of the All-ACC Academic Team, the American Studies major was honored last year by the Virginia Athletics Department as the recipient of the Ralph Sampson Award, presented to the third-year student who best demonstrated excellence in academics, leadership and athletics. On the court this season, Mason is averaging 8.2 points per game while adding 18 assists and 11 steals
- Mason is one of seven student-athletes from the Atlantic Coast Conference among the nominees. The list will be narrowed down to two 10-member teams comprised of five student-athletes from the Division I level and five each from Divisions II, III and NAIA.

2016-17 VIRGINIA WOMEN'S BASKETBALL ROSTER
NUMERICAL

NO.	NAME	POS.	HT.	CLASS	HOMETOWN / PREVIOUS SCHOOL
2	Jae'Lisa Allen	Forward	6-2	Jr.	Pine Bluff, Ark./White Hall
4	Dominique Toussaint	Guard	5-9	Fr.	Staten Island, N.Y./Christ the King
10	J'Kyra Brown	Guard	5-11	Jr.	Rocky Mount, N.C./Rocky Mount HS/East Carolina
12	Breyana Mason	Guard	5-8	Sr.	Woodbridge, Va./Forest Park
13	Jocelyn Willoughby	Guard	6-0	Fr.	East Orange, N.J./Newark Academy
14	Lisa Jablonowski	Forward	6-3	Fr.	Ernster, Luxembourg/Lycees des Garçons
21	Lauren Moses	Forward	6-2	Jr.	Mount Holly, N.J./Rancocas
23	Aliyah Huland El	Guard	6-1	Jr.	Randolph, N.J./Randolph
30	Felicia Aiyeotan	Center	6-9	Fr.	Lagos, Nigeria/Blair Academy (N.J.)
32	Moné Jones	Forward	6-3	So.	Durham, N.C./Riverside
35	Shakyna Payne	Forward	6-3	R-Fr.	Acworth, Ga./SW Atlanta Christian Academy

ALPHABETICAL

NO.	NAME	POS.	HT.	CLASS	HOMETOWN / PREVIOUS SCHOOL
30	Felicia Aiyeotan	Center	6-9	Fr.	Lagos, Nigeria/Blair Academy (N.J.)
2	Jae'Lisa Allen	Forward	6-2	Jr.	Pine Bluff, Ark./White Hall
10	J'Kyra Brown	Guard	5-11	Jr.	Rocky Mount, N.C./Rocky Mount HS/East Carolina
23	Aliyah Huland El	Guard	6-1	Jr.	Randolph, N.J./Randolph
4	Lisa Jablonowski	Forward	6-3	Fr.	Ernster, Luxembourg/Lycees des Garçons
32	Moné Jones	Forward	6-3	So.	Durham, N.C./Riverside
12	Breyana Mason	Guard	5-8	Sr.	Woodbridge, Va./Forest Park
21	Lauren Moses	Forward	6-2	Jr.	Mount Holly, N.J./Rancocas
35	Shakyna Payne	Forward	6-3	R-Fr.	Acworth, Ga./SW Atlanta Christian Academy
4	Dominique Toussaint	Guard	5-9	Fr.	Staten Island, N.Y./Christ the King
13	Jocelyn Willoughby	Guard	6-0	Fr.	East Orange, N.J./Newark Academy

HEAD COACH: Joanne Boyle (Duke '85), 6th Year at Virginia

ASSISTANT COACH: La'Keshia Frett Meredith (Georgia '97), 4th year at Virginia

ASSISTANT COACH: Katherine Graham (LSU, '11), 1st year at Virginia

ASSISTANT COACH: Tim Taylor (James Madison, '89), 1st/8th year at Virginia

PRONUNCIATION GUIDE

Felicia Aiyeotan	EYE-oh-Ten
Jae'Lisa Allen	JAY-lisa
J'Kyra Brown	Juh-KYE-rah
Aliyah Huland El	ahh-LEE-uh HEW-land-ELLE
Lisa Jablonowski	LEE-zuh
Shakyna Payne	shuh-KYE-nuh
La'Keshia Frett Meredith	Lah-KEE-shah

30 FELICIA AIYEOTAN



6-9 • Freshman • Center • Lagos, Nigeria • Blair Academy (N.J.)

2016-17

- Made her collegiate debut in season-opener against Middle Tennessee, scoring four points with four blocks in four minutes (11/11)
- Came off the bench to log a double-double with 23 points and 12 rebounds in 22 minutes against Coppin State (11/13)

HIGH SCHOOL/CLUB

- Played her senior season at Blair Academy (N.J.), averaging 14.0 points per game
- Mid-Atlantic Prep League First-Team All-League
- NJISAA First-Team All-Prep
- As a junior at Nuemann Goretti High in Philadelphia, Pa., won the national title with the team going 30-0 and finishing as the top-ranked high school team in the country
- Rated as the No. 87 overall prospect and No. 14 at her position by ProspectNation and No. 15 among all 2016-17 centers by ESPN HoopGurlz
- Played on the Nigerian U16 National Team

SINGLE GAME BESTS

POINTS

Season: 23 vs Coppin State (11/13)

REBOUNDS

Season: 12 vs Coppin State (11/13)

FG MADE

Season: 10 vs Coppin State (11/13)

FG ATTEMPTS

Season: 12 vs Coppin State (11/13)

3 PT FG MADE

Season:

3 PT FG ATTEMPTS

Season:

FT MADE

Season: 3

FT ATTEMPTS

Season: 4

ASSISTS

Season: 2 vs Coppin State (11/13)

BLOCKS

Season: 6 vs Coppin State (11/13)

STEALS

Season:

Double Doubles:

Season: 1, last vs Coppin State (11/13)

2016-17 GAME-BY-GAME:

Opponent	GS	FG-FGA	3FG-3FGA	FT-FTA	Off-Def	Total Reb	PF	Points	A	TO	Blk	Stl	Min
MIDD TENN		1-3	0-0	2-2	2-0	2	1	4	2	0	4	0	9
COPPIN		10-12	0-0	3-4	5-7	12	3	23	0	2	6	0	22
at Richmond		0-1	0-0	0-0	0-0	0	0	0	0	0	3	0	7
RUTGERS		1-1	0-0	0-0	0-3	3	2	2	1	1	2	0	12
vs. St. Johns		2-2	0-0	0-0	0-2	2	1	4	0	1	2	1	14
vs. Nebraska		2-5	0-0	0-0	1-5	6	2	4	0	4	2	2	21
at Northwestern		0-1	0-0	0-0	0-1	1	1	0	1	1	1	0	6
at Bowling Green													
UIC													
at Georgia													
UMES													
UMBC													
DAYTON													
at Syracuse													
LOUISVILLE													
at UNC													
BC													
at Clemson													
at Pitt													
VT													
at UND													
GT													
DUKE													
at Miami													
WAKE													
FSU													
at VT													
at Louisville													
NC STATE													

VIRGINIA CAREER STATISTICS

Year	G-GS	Min/Avg	FG-FGA	Pct.	3FG-A	Pct.	FT-FTA	Pct.	O-D	T	Avg.	Pf-DQ	Ast	TO	Blk	St	Pts	Avg
2016-17	7-0	91/13.0	16-25	.640	0-0	.000	5-6	.833	8-18	26	3.7	10-0	4	9	20	3	37	5.3

2 JAE'LISA ALLEN



6-2 • junior • Forward • Pine Bluff, Ark. • White Hall

AT VIRGINIA 2016-17

- Played a career-high 20 minutes against Coppin State, scoring 5 points with three rebounds

2015-16

- Appeared in nine games, scoring four points
- Went 2-of-2 against NJIT, scoring four points in three minutes
- Played seven minutes against Norfolk State
- Played three minutes against Longwood (11/22)
- Appeared in the second quarter at both Georgia Tech (1/17) and Florida State (1/21)

2014-15

- Appeared in four games
- Made her collegiate debut against Radford (11/16), playing the final four minutes of the game
- Scored her first collegiate points in the final 30 seconds of the Delaware State game, giving the Cavaliers the basket that pushed them to the century mark

2016-17 GAME-BY-GAME

Opponent	GS	FG-FGA	3FG-3FGA	FT-FTA	Off-Def	Total Reb	PF	Points	A	TO	Blk	Stl	Min
MIDD TENN		0-1	0-0	0-0	0-0	0	0	0	0	0	0	0	1
COPPIN		2-4	0-0	1-1	0-3	3	4	5	0	1	0	0	20
at Richmond		0-0	0-0	0-0	0-0	0	0	0	0	0	0	0	3
RUTGERS		DNP											
vs. St. Johns		DNP											
vs. Nebraska		0-0	0-0	0-0	1-0	1	0	0	0	0	0	1	11
at Northwestern		DNP											
at Bowling Green													
UIC													
at Georgia													
UMES													
UMBC													
DAYTON													
at Syracuse													
LOUISVILLE													
at UNC													
BC													
at Clemson													
at Pitt													
VT													
at UND													
GT													
DUKE													
at Miami													
WAKE													
FSU													
at VT													
at Louisville													
NC STATE													

SINGLE GAME BESTS

POINTS

Season: 5 vs Coppin State (11/13)
Career: 5 vs Coppin State (11/13/16)

REBOUNDS

Season: 3 vs Coppin State (11/13)
Career: 3 (2x)

FG MADE

Season: 2
Career: 2

FG ATTEMPTS

Season: 4
Career: 4

3 PT FG MADE

Season:
Career:

3 PT FG ATTEMPTS

Season:
Career:

FT MADE

Season: 1
Career:

FT ATTEMPTS

Season: 1
Career:

ASSISTS

Season:
Career:

BLOCKS

Season:
Career:

STEALS

Season:
Career:

VIRGINIA CAREER STATISTICS

Year	G-GS	Min/Avg	FG-FGA	Pct.	3FG-A	Pct.	FT-FTA	Pct.	O-D	T	Avg.	Pf-DQ	Ast	TO	Blk	St	Pts	Avg
2014-15	4-0	13/3.3	1-3	.333	0-0	.000	0-0	.000	0-2	2	0.5	3-0	0	0	0	0	2	0.5
2015-16	9-0	24/2.7	2-9	.222	0-0	.000	0-0	.000	4-1	5	0.6	3-0	0	2	0	0	4	0.4
2016-17	4-0	35/8.8	2-5	.400	0-0	.000	1-1	1.000	1-3	4	1.0	4-0	0	1	0	1	5	1.3
TOTAL	17-0	72/4.2	5-17	.294	0-0	.000	1-1	1.000	5-6	11	0.6	10-0	0	3	0	1	11	0.6

10 J'KYRA BROWN



5-11 • Junior • Guard • Rocky Mount, N.C. • Rocky Mount High School

AT VIRGINIA 2016-17

- Scored a UVA career high 18 points against Coppin State (11/13)
- Started the season with a 9-1 assist-to-turnover ratio in the first three games

2015-16

- Appeared in 33 games with six starts, averaging 5.0 points per game
- Scored 10 points, all in the third quarter, in her Cavalier debut at MT (11/13)
- Started Cavalier career with back-to-back 10-point games, scoring 11 in 21 minutes against Norfolk State
- Grabbed a season-high 10 rebounds at Rutgers (3/20)

2014-15

- Sat out the season under NCAA transfer rules

AT EAST CAROLINA

2013-14

- Averaged 5.9 points per game while twice earning Conference USA Freshman of the Week honors
- Scored a season-high 29 points against Louisiana Tech, going 11-of-14 from the field and 6-of-8 from three-point range against the Lady Techsters

2016-17 GAME-BY-GAME

Opponent	GS	FG-FGA	3FG-3FGA	FT-FTA	Off-Def	Total Reb	PF	Points	A	TO	Blk	Stl	Min
MIDD TENN		0-3	0-2	1-2	1-4	5	1	1	4	0	0	1	19
COPPIN		5-8	4-5	4-4	0-4	4	2	18	3	1	0	1	25
at Richmond		2-6	2-5	0-0	1-0	1	3	6	2	0	0	0	24
RUTGERS		0-1	0-1	0-0	0-0	0	0	0	2	2	0	0	8
vs. St. Johns		1-3	0-2	0-0	3-2	5	4	2	2	3	0	1	19
vs. Nebraska		3-7	2-4	3-5	4-5	9	0	11	6	3	1	2	25
at Northwestern		0-4	0-1	0-2	0-1	1	3	0	2	2	0	1	16
at Bowling Green													
UIC													
at Georgia													
UMES													
UMBC													
DAYTON													
at Syracuse													
LOUISVILLE													
at UNC													
BC													
at Clemson													
at Pitt													
VT													
at UND													
GT													
DUKE													
at Miami													
WAKE													
FSU													
at VT													
at Louisville													
NC STATE													

SINGLE GAME BESTS

POINTS

Season: 18 vs Coppin State (11/13)
Career: 18 vs Coppin State (11/13/16)

REBOUNDS

Season: 5 vs Middle Tennessee (11/11)
Career: 10 at Rutgers (3/20/16)

FG MADE

Season: 5 vs Coppin State (11/13)
Career: 5 vs Coppin State (11/13)

FG ATTEMPTS

Season: 8 vs Coppin State (11/13)
Career: 11 at Duke (2/4/16)

3 PT FG MADE

Season: 4 vs Coppin State (11/13)
Career: 4 vs Coppin State (11/13/16)

3 PT FG ATTEMPTS

Season: 5 vs Coppin State (11/13)
Career: 7 at Duke (2/4/16)

FT MADE

Season: 4 vs Coppin State (11/13)
Career: 4 (2x)

FT ATTEMPTS

Season: 4 vs Coppin State (11/13)
Career: 4 (2x)

ASSISTS

Season: 4 vs. Middle Tennessee (11/11)
Career: 4 vs. Middle Tennessee (11/11/16)

BLOCKS

Season:
Career:

STEALS

Season:
Career:

AT EAST CAROLINA

Year	G-GS	Min/Avg	FG-FGA	Pct.	3FG-A	Pct.	FT-FTA	Pct.	O-D	T	Avg.	Pf-DQ	Ast	TO	Blk	St	Pts	Avg
2013-14	31-1	341/11.0	63-155	.406	27-81	.333	31-42	.738	21-31	52	1.7	45-0	25	41	9	16	184	5.9

AT VIRGINIA

Year	G-GS	Min/Avg	FG-FGA	Pct.	3FG-A	Pct.	FT-FTA	Pct.	O-D	T	Avg.	Pf-DQ	Ast	TO	Blk	St	Pts	Avg
2015-16	33-6	545/16.5	51-168	.304	27-85	.318	37-52	.712	31-61	92	2.8	60-0	30	50	3	23	166	5.0
2016-17	7-0	136/19.4	11-32	.344	8-20	.400	8-13	.615	9-16	25	3.6	13-0	21	11	1	6	38	5.4
TOTAL	40-6	681/17.0	62-200	.310	35-105	.333	45-65	.692	40-77	117	2.9	73-0	51	61	4	29	204	5.1

23 ALIYAH HULAND EL



6-1 • Junior • Guard • Randolph, N.J. • Randolph High School

AT VIRGINIA 2016-17

- Had the first double-double of her career with 12 points and 10 assists against Coppin State, the first UVA player to have double-digit assists in a game since Sharneé Zoll had 11 in 2008
- Scored 11 points in the first quarter in the win over Rutgers (11/20)
- Back-to-back 16-point games against Rutgers and St. John's (11/20, 25)

2015-16

- Appeared in all 34 games with 10 starts, averaging 9.6 points per game
- Opened the season with a 10-pt performance at MT (11/13)
- Scored a career-high 20 points at Auburn (Nov. 19) followed by a 20-point performance vs. Longwood

2014-15

- Played in all 31 games with one start
- Made her collegiate debut against Ohio State, scoring five points with an assist and two blocked shots in 13 minutes
- Had her first career start against Florida State, scoring a season-high 14 points

2016-17 GAME-BY-GAME:

Opponent	GS	FG-FGA	3FG-3FGA	FT-FTA	Off-Def	Total Reb	PF	Points	A	TO	Blk	Stl	Min
MIDD TENN	*	3-3	1-1	2-4	1-2	3	3	9	0	4	0	0	22
COPPIN	*	4-13	1-5	3-4	3-1	4	2	12	10	5	0	3	31
at Richmond	*	3-6	1-3	0-0	1-0	1	1	7	2	1	1	1	22
RUTGERS	*	6-10	4-7	0-0	4-2	6	3	16	3	4	2	1	38
vs. St. Johns	*	6-11	3-5	1-1	1-2	3	3	16	2	1	0	2	32
vs. Nebraska	*	5-12	2-9	2-4	0-5	5	1	14	0	1	0	1	27
at Northwestern	*	2-4	0-2	0-0	0-2	2	3	4	0	2	0	1	29
at Bowling Green													
UIC													
at Georgia													
UMES													
UMBC													
DAYTON													
at Syracuse													
LOUISVILLE													
at UNC													
BC													
at Clemson													
at Pitt													
VT													
at UND													
GT													
DUKE													
at Miami													
WAKE													
FSU													
at VT													
at Louisville													
NC STATE													

SINGLE GAME BESTS

POINTS

Season: 16 (2x) last vs St. John's (11/25)
Career: 20 (2x) last vs Longwood (11/22/15)

REBOUNDS

Season: 6 vs Rutgers (11/20)
Career: 10 vs Tulane (11/28/15)

FG MADE

Season: 6 (2x)
Career: 9 vs Longwood (11/22/15)

FG ATTEMPTS

Season: 13 vs Coppin State (11/13)
Career: 15 at Auburn (11/19/15)

FG SHOOTING

Season: 6-10 vs Rutgers (11/20)
3-3 vs Middle Tennessee (11/11)
Career: 7-10 (.700) vs NJIT (12/5/15)

3 PT FG MADE

Season: 4 vs Rutgers (11/20)
Career: 4 vs Rutgers (11/20/16)

3 PT FG ATTEMPTS

Season: 9 vs Nebraska (11/26)
Career: 9 vs Nebraska (11/26/16)

3 PT FG PERCENTAGE

Season: 4-of-7 (.571) vs Rutgers (11/20)
Career: 3-of-3 vs Miami (1/3/16)

FT MADE

Season: 3
Career: 7 at Auburn (11/19/15)

FT ATTEMPTS

Season: 4
Career: 8 at Auburn (11/19/15)

ASSISTS

Season: 10 vs Coppin State (11/13)
Career: 10 vs Coppin State (11/13/16)

BLOCKS

Season: 2
Career: 3 (2x) last vs Miami (1/3/16)

STEALS

Season: 3 vs Coppin State (11/13)
Career: 4 vs Longwood (12/16/14)

DOUBLE DOUBLES

Season: 1 vs Coppin State (11/13)
Career: 1 vs Coppin State (11/13/16)

VIRGINIA CAREER STATISTICS

Year	G-GS	Min/Avg	FG-FGA	Pct.	3FG-A	Pct.	FT-FTA	Pct.	O-D	T	Avg.	Pf-DQ	Ast	TO	Blk	St	Pts	Avg
2014-15	31-1	552/17.8	63-189	.333	23-93	.247	24-32	.750	19-34	53	1.7	59-0	29	43	10	24	173	5.6
2015-16	34-10	853/25.1	120-281	.427	35-107	.327	51-63	.810	40-74	114	3.4	90-4	46	94	21	35	326	9.6
2016-17	7-7	201/28.7	29-59	.492	12-32	.375	8-13	.615	10-14	24	3.4	16-0	17	18	3	9	78	11.1
TOTAL	72-18	1606/22.3	212-529	.401	70-232	.302	83-108	.769	69-122	191	2.7	165-4	92	155	34	68	577	8.0

14 LISA JABLONOWSKI



6-3 • Freshman • Wing/Forward • Ernster, Luxembourg • Lycee des Garcons

AT VIRGINIA

2016-17

- Made her collegiate debut in the season-opener against Middle Tennessee, scoring four points with four rebounds in 11 minutes
- Had a game-high six rebounds in 13 minutes against Rutgers (11/20)

HIGH SCHOOL/CLUB

- Named Sportswoman of the Year, the most prestigious award in Luxembourg, for her performance in the 2014-15 season
- Helped lead her Amicale Steinsel team to the 2016 National Championship of Luxembourg
- Voted to the 2016 Luxembourgish League All-Star Game roster
- Was named the Eurobasket.com Player of the Week (Nov. 9, 2015) after scoring 21 points with nine rebounds and four assists in a victory over Sparta
- A three-time MVP of the U16 and U18 divisions, she helped her team win the Luxembourg Cup in 2014 and guided them to second place finishes in the U14, U16 and U18 championships.

SINGLE GAME BESTS

POINTS

Season: 9 vs Nebraska (11/26)

REBOUNDS

Season: 6 vs Rutgers (11/20)

FG MADE

Season: 4 vs Nebraska (11/26)

FG ATTEMPTS

Season: 5 (2x)

3 PT FG MADE

Season: 1

3 PT FG ATTEMPTS

Season: 2

FT MADE

Season: 0

FT ATTEMPTS

Season: 0

ASSISTS

Season: 1

BLOCKS

Season: 0

STEALS

Season: 1

2016-17 GAME-BY-GAME:

Opponent	GS	FG-FGA	3FG-3FGA	FT-FTA	Off-Def	Total Reb	PF	Points	A	TO	Blk	Stl	Min
MIDD TENN		2-3	0-0	0-0	2-2	4	0	4	0	2	0	1	11
COPPIN		DNP											
at Richmond		1-2	0-1	0-0	1-0	1	0	2	0	0	0	0	10
RUTGERS		1-5	0-1	0-0	4-2	6	1	2	1	0	0	0	13
vs. St. Johns		0-1	0-0	1-2	0-2	2	1	1	0	1	0	0	11
vs. Nebraska		4-5	1-2	0-0	2-1	3	0	9	1	1	0	0	23
at Northwestern		1-3	0-1	2-2	2-0	2	0	4	0	1	0	2	15
at Bowling Green													
UIC													
at Georgia													
UMES													
UMBC													
DAYTON													
at Syracuse													
LOUISVILLE													
at UNC													
BC													
at Clemson													
at Pitt													
VT													
at UND													
GT													
DUKE													
at Miami													
WAKE													
FSU													
at VT													
at Louisville													
NC STATE													

VIRGINIA CAREER STATISTICS

Year	G-GS	Min/Avg	FG-FGA	Pct.	3FG-A	Pct.	FT-FTA	Pct.	O-D	T	Avg.	Pf-DQ	Ast	TO	Blk	St	Pts	Avg
2016-17	6-0	83/13.8	9-19	.474	1-5	.200	3-4	.750	11-7	18	3.0	2-0	2	5	0	3	22	3.7

32 MONÉ JONES



6-3 • Sophomore • Forward • Durham, N.C. • Riverside High School

AT VIRGINIA 2016-17

- Will miss the first several games of the season with a leg injury

2015-16

- Appeared in 33 games with one start, scoring 98 points
- Made her collegiate debut at Middle Tennessee, scoring six points with five rebounds in 24 minutes
- Had her first double-digit scoring effort against Norfolk State with 10 points on 3-of-3 shooting
- Pulled in seven rebounds against NJIT (12/5)
- Scored eight points at Florida State (1/21)
- Made her first collegiate start against Virginia Tech

HIGH SCHOOL

- Averaged 11.7 points, 6.5 rebounds, 1.3 assists, 1.1 steals and 3.1 blocks per game in four years at Riverside High School
- PAC 6 All-Conference and All-State team honors
- Named to the North Carolina/South Carolina All-Star Game roster
- McDonald's High School All-America nominee
- Was also a middle hitter for three years for the RHS volleyball team, earning PAC 6 All-Conference honors

2016-17 GAME-BY-GAME:

Opponent	GS	FG-FGA	3FG-3FGA	FT-FTA	Off-Def	Total Reb	PF	Points	A	TO	Blk	Stl	Min
MIDD TENN		INJ											
COPPIN		INJ											
at Richmond		INJ											
RUTGERS		INJ											
vs. St. Johns		INJ											
vs. Nebraska		INJ											
at Northwestern		INJ											
at Bowling Green													
UIC													
at Georgia													
UMES													
UMBC													
DAYTON													
at Syracuse													
LOUISVILLE													
at UNC													
BC													
at Clemson													
at Pitt													
VT													
at UND													
GT													
DUKE													
at Miami													
WAKE													
FSU													
at VT													
at Louisville													
NC STATE													

SINGLE GAME BESTS

POINTS

Season:

Career: 10 vs Norfolk State (11/16/15)

REBOUNDS

Season:

Career: 7 vs NJIT (12/5/15)

FG MADE

Season:

Career: 3 at MT (11/13/15)

FG ATTEMPTS

Season:

Career: 8 at MT (11/13/15)

3 PT FG MADE

Season:

Career:

3 PT FG ATTEMPTS

Season:

Career:

FT MADE

Season:

Career: 4 vs Norfolk State (11/16/15)

FT ATTEMPTS

Season:

Career: 4, 2x last vs Tulane (11/28/15)

ASSISTS

Season:

Career: 1

BLOCKS

Season:

Career: 2

STEALS

Season:

Career: 3

VIRGINIA CAREER STATISTICS

Year	G-GS	Min/Avg	FG-FGA	Pct.	3FG-A	Pct.	FT-FTA	Pct.	O-D	T	Avg.	Pf-DQ	Ast	TO	Blk	St	Pts	Avg
2015-16	33-1	572/17.3	37-101	.366	0-3	.000	24-32	.750	30-57	87	2.6	69-2	21	43	19	18	98	3.0

12 BREYANA MASON



5-8 • Senior • Guard • Woodbridge, Va. • Forest Park High School

AT VIRGINIA 2016-17

- Scored 18 points in the win over Rutgers, including making five free throws in the final 30 seconds to seal the win

2015-16

- ACC All-Academic Team
- Third on the team in scoring, averaging 10.0 points per game, third in rebounding (3.8 per game) and second in assists (7.8)
- Averaged 12.3 points and 4.3 rebounds per game in ACC contests
- Hit a buzzer-beating halfcourt shot to end the 3Q against Richmond (12/29), scoring seven points with a career-high eight rebounds and five assists

2014-15

- ACC All-Academic Team
- Fourth in the ACC in assist-turnover ratio with 1.80 per game
- Seventh in the ACC in assists with 3.5 per game

2016-17 GAME-BY-GAME

Opponent	GS	FG-FGA	3FG-3FGA	FT-FTA	Off-Def	Total Reb	PF	Points	A	TO	Blk	Stl	Min
MIDD TENN	*	5-16	1-3	1-1	0-2	2	1	12	2	3	0	2	38
COPPIN	*	2-8	0-2	0-0	0-7	7	1	4	2	0	0	1	26
at Richmond	*	3-9	2-4	0-0	0-2	2	2	8	4	2	0	2	37
RUTGERS	*	5-9	3-5	5-6	0-3	3	2	18	2	2	0	4	35
vs. St. Johns	*	2-12	1-4	0-0	1-3	4	1	5	3	2	0	1	35
vs. Nebraska	*	1-6	0-2	0-3	0-1	1	2	2	5	1	0	1	27
at Northwestern	*	4-9	3-3	0-2	0-3	3	3	11	6	1	0	1	38
at Bowling Green													
UIC													
at Georgia													
UMES													
UMBC													
DAYTON													
at Syracuse													
LOUISVILLE													
at UNC													
BC													
at Clemson													
at Pitt													
VT													
at UND													
GT													
DUKE													
at Miami													
WAKE													
FSU													
at VT													
at Louisville													
NC STATE													

SINGLE GAME BESTS

POINTS

Season: 18 vs Rutgers (11/20)
Career: 22 vs Ohio State (11/14/14)

REBOUNDS

Season: 7 vs Coppin State (11/13)
Career: 8 vs Richmond (12/29/15)

FG MADE

Season: 5 (2x)
Career: 10 at Georgia Tech (1/17/16)

FG ATTEMPTS

Season: 16 vs Middle Tennessee (11/13)
Career: 17 vs ODU (3/19/15)

3 PT FG MADE

Season: 3 vs Rutgers (11/20)
Career: 5 vs Ohio State (11/14/14)

3 PT FG ATTEMPTS

Season: 5 vs Rutgers (11/20)
Career: 7 vs Ohio State (11/14/14)

FT MADE

Season: 5 vs Rutgers (11/20)
Career: 6 (2x) last vs Green Bay (11/26/15)

FT ATTEMPTS

Season: 6 vs Rutgers (11/20)
Career: 6 (3x)

FT PERCENTAGE

Season: 5-6 vs Rutgers (11/20)
Career: 6-6 (2x) last vs Green Bay (11/26/15)

ASSISTS

Season: 4 at Richmond (11/16)
Career: 8 at UNC (02/26/15)

BLOCKS

Season:
Career: 2 vs Davidson (12/28/14)

STEALS

Season: 4 vs Rutgers (11/20)
Career: 5 vs Green Bay (11/26/15)

DOUBLE DOUBLES

Season:
 Career:

VIRGINIA CAREER STATISTICS

Year	G-GS	Min/Avg	FG-FGA	Pct.	3FG-A	Pct.	FT-FTA	Pct.	O-D	T	Avg.	Pf-DQ	Ast	TO	Blk	St	Pts	Avg
2013-14	30-14	553/18.4	39-118	.331	9-19	.474	17-22	.773	10-32	42	1.4	32-0	37	43	0	20	104	3.5
2014-15	31-31	1016/32.8	109-265	.411	27-62	.435	51-62	.823	10-69	79	2.5	42-0	112	60	2	41	296	9.5
2015-16	34-34	1133/33.3	137-328	.418	22-68	.324	43-57	.754	29-99	128	3.8	54-0	78	65	2	52	339	10.0
2016-17	7-7	236/33.7	22-69	.319	10-23	.435	6-12	.500	1-21	22	3.1	12-0	24	11	0	12	60	8.6
TOTAL	102-86	2938/28.8	307-780	.394	68-172	.395	117-153	.765	50-221	271	2.7	140-0	251	179	4	125	799	7.8

21 LAUREN MOSES



6-2 • Junior • Forward • Mount Holly, N.J. • Rancocas High School

AT VIRGINIA

2016-17 SEASON

- Had a double-double with 15 points and 10 rebounds in 23 minutes against Coppin State (11/13)
- Scored a career-high 27 points at Richmond, including 11 pts in the 1st half; made four freethrows in final 21 seconds to put the game away (11/16)
- Named to the South Point Shootout All-Tournament Team after scoring 19 points in the win over Nebraska (11/26)

2015-16 SEASON

- Started all 34 games
- 13th in the ACC in rebounding, averaging 6.9 per game
- Four double-doubles, eight double-digit rebounding games and 16 double-digit scoring efforts
- Named to the Paradise Jam All-Tournament Team
- Was named the MVP of the Cavalier Classic Tournament after scoring 17 points on 7-of-8 shooting (starting the game 7-of-7) against Coppin, followed by a double-double with 13 points and a career-high 14 rebounds against Richmond

2014-15

- Appeared in all 31 games with 30 starts
- 13th in the ACC in blocked shots with 1.10 per game

2016-17 GAME-BY-GAME

Opponent	GS	FG-FGA	3FG-3FGA	FT-FTA	Off-Def	Total Reb	PF	Points	A	TO	Blk	Stl	Min
MIDD TENN	*	2-6	0-0	0-0	4-2	6	4	4	4	5	0	3	31
COPPIN	*	7-10	0-0	1-2	5-5	10	3	15	2	1	1	1	23
at Richmond	*	9-14	0-0	9-9	2-2	4	2	27	4	0	0	2	31
RUTGERS	*	5-12	0-0	3-4	2-3	5	1	13	0	3	0	1	35
vs. St. Johns	*	3-7	0-0	0-0	0-3	3	4	6	1	2	1	1	24
vs. Nebraska	*	8-12	0-0	3-4	3-2	5	4	19	0	0	0	1	22
at Northwestern	*	7-14	0-0	2-2	2-4	6	2	16	0	3	0	1	35
at Bowling Green													
UIC													
at Georgia													
UMES													
UMBC													
DAYTON													
at Syracuse													
LOUISVILLE													
at UNC													
BC													
at Clemson													
at Pitt													
VT													
at UND													
GT													
DUKE													
at Miami													
WAKE													
FSU													
at VT													
at Louisville													
NC STATE													

SINGLE GAME BESTS

POINTS

Season: 27 at Richmond (11/16)
Career: 27 at Richmond (11/16/16)

REBOUNDS

Season: 10 vs Coppin State (11/13)
Career: 15 at Boston College (02/14/16)

FG MADE

Season: 9 at Richmond (11/16)
Career: 9 at Richmond (11/16/16)

FG ATTEMPTS

Season: 14 at Richmond (11/16)
Career: 14 at Richmond (11/16/16)

FG SHOOTING

Season:
Career: 7-of-8 vs Coppin St (12/28/15)

FT MADE

Season:
Career: 8 at Wake Forest (1/10/16)

FT ATTEMPTS

Season:
Career: 13 at Wake Forest (1/10/16)

FT PERCENTAGE

Season: 9-9 at Richmond (11/16)
Career: 9-9 at Richmond (11/16)

ASSISTS

Season: 4 (2x)
Career: 4 (2x) last at Richmond (11/16/16)

BLOCKS

Season: 1
Career: 3 (3x)

STEALS

Season: 3 vs Middle Tennessee (11/11)
Career: 6 at Duke (2/4/16)

DOUBLE DOUBLES

Season: 1 vs Coppin State (11/13)
Career: 6, last vs Coppin State (11/13)

VIRGINIA CAREER STATISTICS

Year	G-GS	Min/Avg	FG-FGA	Pct.	3FG-A	Pct.	FT-FTA	Pct.	O-D	T	Avg.	Pf-DQ	Ast	TO	Blk	St	Pts	Avg
2014-15	31-30	731/23.6	77-183	.421	0-1	.000	35-66	.530	66-111	177	5.7	95-5	26	64	34	26	189	6.1
2015-16	34-34	969/28.5	128-293	.437	0-1	.000	65-115	.565	101-135	236	6.9	104-5	33	72	24	52	321	9.4
2016-17	7-7	201/28.7	41-75	.547	0-0	.000	18-21	.857	18-21	39	5.6	20-0	11	14	2	10	100	14.3
TOTAL	72-71	1901/26.4	246-551	.446	0-2	.000	118-202	.584	185-267	452	6.3	219-10	70	150	60	88	610	8.5

35 SHAKYNA PAYNE



6-3 • Redshirt Freshman • Forward • Acworth, Ga. • SW Atlanta Christian Academy

AT VIRGINIA 2016-17

- Made her collegiate debut in the South Point Shootout game against Nebraska, playing seven minutes

2015-16

- Missed the entire season with a leg injury

HIGH SCHOOL

- Played four years of varsity basketball, playing three years at Etowah before finishing her senior year at Southwest Atlanta Christian Academy
- Was an honorable mention All-County player in 2011 before earning second-team honors in 2012 and then being named to the first-team in 2013
- 2014 Atlanta Journal Constitution All-State Class A Second Team
- Scored over 1,100 points in her prep career, averaging 12.6 points per game as a junior and 14.2 points with 7.3 rebounds per game her senior season
- Also played two years of varsity volleyball at Etowah as a middle blocker

SINGLE GAME BESTS

POINTS

Season: _____

REBOUNDS

Season: _____

FG MADE

Season: _____

FG ATTEMPTS

Season: _____

3 PT FG MADE

Season: _____

3 PT FG ATTEMPTS

Season: _____

FT MADE

Season: _____

FT ATTEMPTS

Season: _____

ASSISTS

Season: _____

BLOCKS

Season: _____

STEALS

Season: _____

2016-17 GAME-BY-GAME

Opponent	GS	FG-FGA	3FG-3FGA	FT-FTA	Off-Def	Total Reb	PF	Points	A	TO	Blk	Stl	Min
MIDD TENN		DNP											
COPPIN		DNP											
at Richmond		DNP											
RUTGERS		DNP											
vs. St. Johns		DNP											
vs. Nebraska		0-3	0-0	0-0	0-0	0	1	0	0	0	0	0	7
at Northwestern		DNP											
at Bowling Green		DNP											
UIC		DNP											
at Georgia		DNP											
UMES		DNP											
UMBC		DNP											
DAYTON		DNP											
at Syracuse		DNP											
LOUISVILLE		DNP											
at UNC		DNP											
BC		DNP											
at Clemson		DNP											
at Pitt		DNP											
VT		DNP											
at UND		DNP											
GT		DNP											
DUKE		DNP											
at Miami		DNP											
WAKE		DNP											
FSU		DNP											
at VT		DNP											
at Louisville		DNP											
NC STATE		DNP											

VIRGINIA CAREER STATISTICS

Year	G-GS	Min/Avg	FG-FGA	Pct.	3FG-A	Pct.	FT-FTA	Pct.	O-D	T	Avg.	Pf-DQ	Ast	TO	Blk	St	Pts	Avg
2015-16		INJURED																
2016-17	1-0	7/7.0	0-3	.000	0-0	.000	0-0	.000	0-0	0	0.0	1-0	0	0	0	0	0	0.0

4 DOMINIQUE TOUSSAINT



5-9 • Freshman • Gurad • Staten Island, N.Y. • Christ the King

AT VIRGINIA 2016-17

- Was in the starting lineup for her collegiate debut, scoring 16 points with five rebounds

HIGH SCHOOL/CLUB

- 2016 Miss New York Basketball
- 2016 Gatorade New York State Girls' Basketball Player of the Year
- Named to the Jordan Brand Classic 2016 All-American Girls' team, competing for the East squad
- Averaged 19.7 points, 6.8 rebounds, 3.5 assists and 2.7 steals per game in her senior season at Christ the King
- 2015 Queens Player of the Year, MSG Tri-State Second Team and CHSAA Sportsmanship Player of the Year
- Competed at the 2016 USA Basketball Women's U18 National Team Trials in May of 2016 as well as the 2013 U16 and 2014 U17 trials
- ESPN-W's No. 48 overall recruit and No. 12 at her position and ranked at No. 25 by Prospect Nation in the 2016 class

SINGLE GAME BESTS

POINTS

Season: 16 vs Middle Tennessee (11/11)

REBOUNDS

Season: 9 at Richmond (11/16)

FG MADE

Season: 5 vs Middle Tennessee (11/11)

FG ATTEMPTS

Season: 12 vs Middle Tennessee (11/11)

3 PT FG MADE

Season: 2

3 PT FG ATTEMPTS

Season: 4

FT MADE

Season: 4

FT ATTEMPTS

Season: 8

ASSISTS

Season: 5 vs Coppin State (11/13)

BLOCKS

Season:

STEALS

Season: 3 vs Coppin State (11/11)

2016-17 GAME-BY-GAME

Opponent	GS	FG-FGA	3FG-3FGA	FT-FTA	Off-Def	Total Reb	PF	Points	A	TO	Blk	Stl	Min
MIDD TENN	*	5-12	2-4	4-8	1-4	5	2	16	2	3	0	2	33
COPPIN	*	2-7	0-1	1-2	2-1	3	4	5	5	2	1	3	24
at Richmond	*	4-10	2-4	0-0	3-6	9	5	10	4	3	0	1	30
RUTGERS	*	1-4	0-2	0-0	1-1	2	2	2	2	3	0	0	21
vs. St. Johns	*	5-12	0-2	1-2	0-1	1	3	11	2	1	0	3	35
vs. Nebraska	*	1-4	0-2	0-0	1-2	3	4	2	2	2	0	0	20
at Northwestern	*	4-13	2-6	4-6	2-4	6	3	14	4	8	0	3	30
at Bowling Green													
UIC													
at Georgia													
UMES													
UMBC													
DAYTON													
at Syracuse													
LOUISVILLE													
at UNC													
BC													
at Clemson													
at Pitt													
VT													
at UND													
GT													
DUKE													
at Miami													
WAKE													
FSU													
at VT													
at Louisville													
NC STATE													

VIRGINIA CAREER STATISTICS

Year	G-GS	Min/Avg	FG-FGA	Pct.	3FG-A	Pct.	FT-FTA	Pct.	O-D	T	Avg.	Pf-DQ	Ast	TO	Blk	St	Pts	Avg
2016-17	7-7	193/27.6	22-62	.355	6-21	.286	10-18	.556	10-19	29	4.1	23-1	21	22	1	12	60	8.6

13 JOCELYN WILLOUGHBY



6-0 • Freshman • Guard • East Orange, N.J. • Newark Academy

AT VIRGINIA 2016-17

- Was in the starting lineup for her collegiate debut against Middle Tennessee, scoring 13 points with a game-high nine rebounds (11/11)
- Started the Coppin State game going 8-of-8, scoring all 21 of her points in the first half (11/13)

HIGH SCHOOL/CLUB

- 2016 Gatorade New Jersey Girl's Basketball Player of the Year
- 2016 MaxPreps All-America Fourth Team
- Two-time First Team All-State and All-County
- Averaged 21.9 points, 12.8 rebounds, 3.9 blocks, 3.8 assists and 3.1 steals per contest her senior season
- Became the first player at Newark Academy I to score 1,000 career points, doing so in her sophomore season.
- As a freshman and sophomore, she helped lead Newark to two-straight seasons with 21-or-more wins and back-to-back Prep B girls' basketball state titles.
- Ranked the No. 8 wing in her class and No. 47 player overall by ESPN-W and No. 5 at her position and No. 28 overall by Prospects Nation

SINGLE GAME BESTS

POINTS

Season: 21 vs. Coppin State (11/13)

REBOUNDS

Season: 9 vs Middle Tennessee (11/11)

FG MADE

Season: 8 vs Coppin State (11/11)

FG ATTEMPTS

Season: 10 vs Coppin State (11/11)

3 PT FG MADE

Season: 2

3 PT FG ATTEMPTS

Season: 2

FT MADE

Season: 7 vs Middle Tennessee (11/11)

FT ATTEMPTS

Season: 8 vs Middle Tennessee (11/11)

ASSISTS

Season: 3

BLOCKS

Season: 2 vs Coppin State (11/31)

STEALS

Season: 1

DOUBLE DOUBLES

Season: 2 last vs. Nebraska (11/26)

2016-17 GAME-BY-GAME:

Opponent	GS	FG-FGA	3FG-3FGA	FT-FTA	Off-Def	Total Reb	PF	Points	A	TO	Blk	Stl	Min
MIDD TENN	*	3-11	0-2	7-8	5-4	9	3	13	0	6	0	1	36
COPPIN	*	8-10	2-2	3-4	1-3	4	2	21	3	3	2	1	29
at Richmond	*	1-9	0-0	1-3	3-4	7	3	3	2	3	2	0	36
RUTGERS	*	2-9	2-5	3-3	1-3	4	2	9	3	3	0	0	38
vs. St. Johns	*	1-9	0-2	8-10	5-5	10	3	10	1	3	1	1	30
vs. Nebraska	*	6-9	0-2	0-0	1-1	2	3	12	2	3	0	1	17
at Northwestern	*	3-10	1-4	4-8	3-2	5	5	11	3	0	0	1	31
at Bowling Green													
UIC													
at Georgia													
UMES													
UMBC													
DAYTON													
at Syracuse													
LOUISVILLE													
at UNC													
BC													
at Clemson													
at Pitt													
VT													
at UND													
GT													
DUKE													
at Miami													
WAKE													
FSU													
at VT													
at Louisville													
NC STATE													

VIRGINIA CAREER STATISTICS

Year	G-GS	Min/Avg	FG-FGA	Pct.	3FG-A	Pct.	FT-FTA	Pct.	O-D	T	Avg.	Pf-DQ	Ast	TO	Blk	St	Pts	Avg
2016-17	7-7	217/31.0	24-67	.358	5-17	.294	26-36	.722	19-22	41	5.9	21-1	14	21	5	5	79	11.3

**2016-17 Virginia Women's Basketball
Virginia Combined Team Statistics (as of Dec 01, 2016)
All games**

RECORD:	OVERALL	HOME	AWAY	NEUTRAL
ALL GAMES	5-2	3-0	1-1	1-1
CONFERENCE	0-0	0-0	0-0	0-0
NON-CONFERENCE	5-2	3-0	1-1	1-1

#	Player	gp-gs	min	avg	Total		3-Point		F-Throw		Rebounds					pts	avg					
					fg-fga	fg%	3fg-fga	3fg%	ft-fa	ft%	off	def	tot	avg	pf			dq	a	to	blk	stl
21	Lauren Moses	7-7	201	28.7	41-75	.547	0-0	.000	18-21	.857	18	21	39	5.6	20	0	11	14	2	10	100	14.3
13	Jocelyn Willoughby	7-7	217	31.0	24-67	.358	5-17	.294	26-36	.722	19	22	41	5.9	21	1	14	21	5	5	79	11.3
23	Aliyah Huland El	7-7	201	28.7	29-59	.492	12-32	.375	8-13	.615	10	14	24	3.4	16	0	17	18	3	9	78	11.1
12	Breyana Mason	7-7	236	33.7	22-69	.319	10-23	.435	6-12	.500	1	21	22	3.1	12	0	24	11	0	12	60	8.6
04	Dominique Toussaint	7-7	193	27.6	22-62	.355	6-21	.286	10-18	.556	10	19	29	4.1	23	1	21	22	1	12	60	8.6
10	J'Kyra Brown	7-0	136	19.4	11-32	.344	8-20	.400	8-13	.615	9	16	25	3.6	13	0	21	11	1	6	38	5.4
30	Felicia Aiyeotan	7-0	91	13.0	16-25	.640	0-0	.000	5-6	.833	8	18	26	3.7	10	0	4	9	20	3	37	5.3
14	Lisa Jablonowski	6-0	83	13.8	9-19	.474	1-5	.200	3-4	.750	11	7	18	3.0	2	0	2	5	0	3	22	3.7
02	Jae'Lisa Allen	4-0	35	8.8	2-5	.400	0-0	.000	1-1	1.000	1	3	4	1.0	4	0	0	1	0	1	5	1.3
35	Shakyna Payne	1-0	7	7.0	0-3	.000	0-0	.000	0-0	.000	0	0	0	0.0	1	0	0	0	0	0	0	0.0
Team											21	18	39					1				
Total.....		7	1400		176-416	.423	42-118	.356	85-124	.685	108	159	267	38.1	122	2	114	113	32	61	479	68.4
Opponents.....		7	1400		138-367	.376	36-123	.293	75-108	.694	82	157	239	34.1	132	-	86	138	20	54	387	55.3

TEAM STATISTICS	VA	OPP	Date	Opponent	Score	Att.
SCORING	479	387	11/11/16	MIDDLE TENNESSEE	w 63-51	2837
Points per game	68.4	55.3	11/13/16	COPPIN STATE	w 103-40	3590
Scoring margin	+13.1	-	11/16/16	at Richmond	w 63-56	653
FIELD GOALS-ATT	176-416	138-367	11/20/16	RUTGERS	w 62-54	2621
Field goal pct	.423	.376	11/25/16	vs SJU	L 55-66	0
3 POINT FG-ATT	42-118	36-123	11/26/16	vs NEB	w 73-51	0
3-point FG pct	.356	.293	12/1/16	at NORTHWESTERN	L 60-69	694
3-pt FG made per game	6.0	5.1	* - Conference game			
FREE THROWS-ATT	85-124	75-108				
Free throw pct	.685	.694				
F-Throws made per game	12.1	10.7				
REBOUNDS	267	239				
Rebounds per game	38.1	34.1				
Rebounding margin	+4.0	-				
ASSISTS	114	86				
Assists per game	16.3	12.3				
TURNOVERS	113	138				
Turnovers per game	16.1	19.7				
Turnover margin	+3.6	-				
Assist/turnover ratio	1.0	0.6				
STEALS	61	54				
Steals per game	8.7	7.7				
BLOCKS	32	20				
Blocks per game	4.6	2.9				
ATTENDANCE	9048	1347				
Home games-Avg/Game	3-3016	2-674				
Neutral site-Avg/Game	-	2-0				

Score by Periods	1st	2nd	3rd	4th	Totals
Virginia	139	118	113	109	479
Opponents	102	65	114	106	387

OPPONENT	AIYEOTAN	ALLEN	BROWN	HULAND EL	JABLONOWSKI	JONES
MIDD TENN	4-2-2	0-0-0	1-5-4	9-3-0	4-4-0	INJ
COPPIN	23-12-0	5-3-0	18-4-3	12-4-10	DNP	INJ
at Richmond	0-0-0	0-0-0	6-1-2	7-1-2	2-1-0	INJ
RUTGERS	2-3-1	DNP	0-0-2	16-6-3	2-6-1	INJ
vs. St. Johns	4-2-0	DNP	2-5-2	16-3-2	1-2-0	INJ
vs. Nebraska	4-6-0	0-1-0	11-9-6	14-5-0	9-3-1	INJ
at Northwestern	0-1-1	DNP	0-1-2	4-2-0	4-2-0	INJ
at Bowling Green						
UIC						
at Georgia						
UMES						
UMBC						
DAYTON						
at Syracuse						
LOUISVILLE						
at UNC						
BC						
at Clemson						
at Pitt						
VT						
at UND						
GT						
DUKE						
at Miami						
WAKE						
FSU						
at VT						
at Louisville						
NC STATE						

OPPONENT	MASON	MOSES	PAYNE	TOUSSAINT	WILLOUGHBY
MIDD TENN	12-2-2	4-6-4	DNP	16-5-2	13-9-0
COPPIN	4-7-2	15-10-2	DNP	5-3-5	21-4-3
at Richmond	8-2-4	27-4-4	DNP	10-9-4	3-7-2
RUTGERS	18-3-2	13-5-0	DNP	2-2-2	9-4-3
vs. St. Johns	5-4-3	6-3-1	DNP	11-1-2	10-10-1
vs. Nebraska	2-1-5	19-5-0	0-0-0	2-3-2	12-2-2
at Northwestern	11-3-6	16-6-0	DNP	14-6-4	11-5-3
at Bowling Green					
UIC					
at Georgia					
UMES					
UMBC					
DAYTON					
at Syracuse					
LOUISVILLE					
at UNC					
BC					
at Clemson					
at Pitt					
VT					
at UND					
GT					
DUKE					
at Miami					
WAKE					
FSU					
at VT					
at Louisville					
NC STATE					

VIRGINIA
OPPONENT

Bench Points	102 (14.6 ppg)	66 (9.4 ppg)
FG Percentage- Home82-181 (.453)	53-160 (.331)
FG Percentage- Road44-115 (.382)	43-100 (.430)
FG Percentage- Neutral	50-120 (.417)	42-107 (.393)
Most Points - Quarter	31 (1st) vs Coppin State	23 (3rd) at Northwestern
Fewest Points- Quarter6 vs Rutgers	.5 (4th) vs Coppin State
Fewest Combined Points - Quarter16 (2nd) vs Rutgers	
Most Points- Half53 (1st) vs Coppin State	.43 (2nd) at Northwestern
Fewest Points- Half	21 (2nd) at Northwestern	.19 (2nd) vs Coppin State
Largest Halftime Lead	32 vs Coppin State	
Largest Halftime Deficit		

VIRGINIA'S RECORD WHEN

Game decided by 10 pts or less	2-1
Leading at halftime	5-2
Trailing at halftime	0-0
Tied at halftime	0-0
Went into overtime	0-0
Leading by 10 or more points	5-1
Shot FG 50% or better	1-0
Shot FG less than 50%	4-2
Shot FG less than 40%	2-2
Shot FG 40% or better	3-0
Holding opponent under 60 pts	5-0
Scoring 30-39 points	0-0
Scoring 40-49 points	0-0
Scoring 50-59 points	0-1
Scoring 60-69 points	3-1
Scoring 70-79 points	1-0
Scoring 80-89 points	0-0
Scoring 90-100 points	0-0
Scoring over 100 points	1-0
Outrebounding opponent	4-1
Being outrebounded	1-1
Tied in rebounding	0-0
Have fewer TOs than opponent	5-2
Committing 15 or less TOs	3-1

SCORING BENCHMARKS
GAMES WITH 20 OR MORE POINTS IN 16-17

Jocelyn Willoughby	1
Felicia Aiyeotan	1
Lauren Moses	1

GAMES WITH 10 OR MORE POINTS IN 16-17

Lauren Moses	5
Jocelyn Willoughby	5
Aliyah Huland El	4
Dominique Toussaint	4
Breyana Mason	3
J'Kyra Brown	2
Felicia Aiyeotan	1

GAMES WITH 10 OR MORE REBOUNDS IN 16-17

Jocelyn Willoughby	2
Lauren Moses	1
Felicia Aiyeotan	1

GAMES WITH 10 OR MORE ASSISTS IN 16-17

Aliyah Huland El	1
----------------------------	---

DOUBLE DOUBLES IN 16-17

Jocelyn Willoughby	2
Lauren Moses	1
Felicia Aiyeotan	1
Aliyah Huland El	1

VIRGINIA HIGHS
OPPONENT HIGHS

Points	103 vs Coppin State 11/13	69 at Northwestern 12/1
FG Made	40 vs Coppin State 11/13	24 at Northwestern 12/1
FG Attempts	72 vs Coppin State 11/13	58 vs M Tenn 11/11
FG %	.40-72 (.556) vs Coppin State 11/13	.24-47 (.511) at Northwestern 12/1
3FG Made	.9 vs Rutgers 11/20	.8 vs Rutgers 11/20
3FG Attempts	21 vs Rutgers 11/20	22 vs M Tenn 11/11
3FG %	.7-15 (.467) vs Coppin State 11/13	.8-16 (.500) vs Rutgers 11/20
Free Throws Made	17 vs M Tenn 11/11	16 at Northwestern 12/1
Free Throw Attempts	25 vs M Tenn 11/11	26 vs Coppin State 11/13
Free Throw %	.11-13 (.846) vs Rutgers 11/20	.11-13 (.846) at Richmond 11/16
Rebounds	50 vs Coppin State 11/13	39 vs M Tenn 11/11
Assists	25 vs Coppin State 11/13	16 at Northwestern 12/1
Steals	10 (4x)	10 (3x)
Blocked Shots	10 vs Coppin State 11/13	7 at Northwestern 12/1
Turnovers	23 vs M Tenn 11/11	24 (2x)
Fouls	21 vs Coppin State 11/13	25 (2x)

VIRGINIA LOWS
OPPONENT LOWS

Points	55 vs Saint Johns 11/25	40 vs Coppin St 11/13
FG Made	.20 Saint Johns 11/25	.12 vs Coppin St 11/13
FG Attempts	51 vs Rutgers 11/20	26 vs Coppin St 11/13
FG %	.20-57 (.351) vs Saint Johns 11/25	.12-56 (.214) vs Coppin St 11/13
3FG Made	4 (2x)	2 vs Coppin St 11/13
3FG Attempts	12 vs M Tenn 11/11	13 vs Coppin St 11/13
3FG %	.238 (5-21) vs Nebraska 11/26	.154 (2-13) vs Coppin St 11/13
Free Throws Made	8 vs Nebraska 11/26	4 vs Rutgers 11/20
Free Throw Attempts	12 at Richmond 11/16	5 vs Rutgers 11/20
Free Throw %	.500 (8-16) vs Nebraska 11/26	.538 (14-26) vs Coppin St 11/13
Rebounds	32 (2x)	25 vs Rutgers 11/20
Assists	11 vs Saint Johns 11/26	8 vs Coppin St 11/13
Steals	6 (2x)	.6 vs M Tenn 11/11
Blocked Shots	1 at Northwestern 12/1	.1 (2x)
Turnovers	10 at Richmond 11/16	16 (2x)
Fouls	13 vs Rutgers 11/20	13 vs Saint Johns 11/25

VIRGINIA INDIVIDUAL HIGHS
OPPONENT INDIVIDUAL HIGHS

Points	.27 Moses at Richmond 11/16	.29 Coffey at Northwestern 12/1
FG Made	10 Aiyeotan vs Coppin St 11/13	9 Coffey at Northwestern 12/1
FG Attempts	16 Mason vs M Tenn 11/11	17 Lucas vs Coppin St 11/13
FG %	.833 (10-12) Aiyeotan vs Coppin St 11/13	.778 (7-9) Wellere vs Saint Johns 11/25
3FG Made	4 (2x)	4 Wellere vs Saint Johns 11/25
3FG Attempts	9 Huland El vs Nebraska 11/26	9 Petty vs M Tenn 11/11
3FG Percentage	.800 (4-5) Brown vs Coppin St 11/13	.667 (4-6) Wellere vs Saint Johns 11/25
	3-3 Mason at Northwestern 12/1	
	.2-2 Willoughby vs Coppin St 11/13	
FT Made	.9 Moses at Richmond 11/16	10 Coffey at Northwestern 12/1
FT Attempts	10 Willoughby vs Saint Johns 11/25	12, multiple
FT Percentage	.9-9 Moses at Richmond 11/16	4-4 Parson at Richmond 11/16
Rebounds	12 Aiyeotan vs Coppin St 11/13	14 Coffey at Northwestern 12/1
Assists	10 Huland El vs Coppin St 11/13	.9 Lewis vs Saint Johns 11/25
Steals	4 Mason vs Rutgers 11/20	.5 Deary at Northwestern 12/1
Blocked Shots	6 Aiyeotan vs Coppin St 11/13	2, multiple
Turnovers	8 Toussaint at Northwestern 12/1	8 Sameuls vs Coppin St 11/13

VIRGINIA INDIVIDUALS

- **Two UVA players with double-doubles in the same game:** vs Coppin State 11/13/16 (Moses 15-10r, Huland EI 12-10a, Aiyeotan 23-12r)
- **Four players in double figures:** at North-western 12/1/16 (Moses 16, Toussaint 14, Mason 11, Willoughby 11)
- **Five players in double figures:** vs Cop-pin State 11/13/16 (Willoughby 21, Moses 15, Huland EI 12, Brown 18, Aiyeotan 23)
- **Six players in double figures:** vs Norfolk State 11/16/15 (Randolph 17, Moses 12, Brown 11, Venson 10, Mason 10, Huland EI 10, Jones 10)
- **Seven players in double figures:** vs Norfolk State 11/16/15 (Randolph 17, Moses 12, Brown 11, Venson 10, Mason 10, Huland EI 10, Jones 10)
- **Scored 20 points:** 27, Lauren Moses at Richmond, 11/16/16
- **Scored 25 points:** 27, Lauren Moses at Richmond, 11/16/16
- **Scored 30 points:** 34, Monica Wright vs. Green Bay, 03/21/10
- **Scored 40 points:** **48, Mimi Kennedy at North Carolina, 01/15/98
- **A non-starter scored 20 or more points:** 23, Felicia Aiyeotan vs Coppin State 11/13/16
- **Two or more Hoos scored 20 or more points in the same game:** vs Coppin State (Willoughby 21, Aiyeotan 23)
- **Perfect from the field (5 attempts):** 7-7, Imovbioh vs Louisville 03/01/15
- **Perfect at FT line (10 attempts):** 11-11, Monica Wright vs North Carolina, 02/15/10
- **Perfect at FT line (9 attempts):** 9-9, Lauren Moses at Richmond 11/16/16
- **Perfect at FT line (8 attempts):** 9-9, Lauren Moses at Richmond 11/16/16
- **Had 20 Free throw attempts:** **20, Brandi Teamer at Wake Forest, 01/6/05
- **Had 15 rebounds:** 15, Lauren Moses at Boston College 02/14/16
- **Had 20 rebounds:** 24, Sarah Imovbioh vs Ohio State 11/14/14
- **Had 10 assists:** 10, Aliyah Huland EI vs Coppin State 11/13/16
- **Had 6 steals:** 6, Kelsey Wolfe at Miami, 01/06/13
- **Blocked 5 shots:** 6, Felicia Aiyeotan vs Coppin State 11/13/16

VIRGINIA TEAM

- **UVA ranked in AP Top 25:** #22, 11/21/12
- **UVA ranked USA Today Top 25:** #22, 3/8/10
- **Played AP No. 1 team:** #1 Duke, L 79-58, 3/2/07
- **Defeated AP No. 1 team:** #1 Maryland, 75-74, 2/11/92
- **Defeated AP Top 10 team:** #8 Louisville, 75-59, 03/01/15
- **Defeated AP Top 25 team:** #22 Miami, 76-56, 01/03/16

FIELD GOAL SHOOTING

- **Shot 50 percent:** .556 (40-72) vs Coppin State, 11/13/16
- **Shot 60 percent:** .623 (33-53) vs Georgia Tech, 3/02/08
- **Shot 70 percent:** **.700 (42-60) at Wake Forest, 1/07/87
- **Made 40-49 field goals:** 40 vs. Coppin State, 11/13/16
- **Made 50 field goals:** **54 vs Cleveland State, 11/29/95
- **Attempted 60-69 FG:** 63 vs vs Nebraska, 11/26/16
- **Attempted 70-79 FG:** 72 vs Coppin State, 11/13/16
- **Attempted 80 FG:** 85 at NC State, 2/10/11

THREE-POINT SHOOTING

- **Shot 50 percent:** .667 (6-9) vs Miami 01/03/16
- **Shot 60 percent:** .667 (6-9) vs Miami 01/03/16
- **Shot 70 percent:** .750 (6-8) vs Louisville 03/01/15
- **Shot 80 percent:** .857 (6-7) vs St. John's, 03/19/88
- **Made 10 three-pt. field goals:** 10 at Clem-son 2/01/15
- **Attempted 20 three-pt. FG:** 21 (made 5) vs Nebraska (11/26/16)

FREE THROW SHOOTING

- **Shot 80 percent:** .846 (11-13) vs Rutgers, 11/20/16
- **Shot 90 percent:** .938 (15-16) vs UNC, 02/25/16
- **Shot 100 percent:** 2-2 at Duke, 2/4/16
- **Made 20 free throws:** 21 vs Pitt 01/24/16
- **Made 30 free throws:** 30 vs. North Caro-lina, 02/20/14
- **Attempted 30 FT:** 33 vs Louisville 03/01/15
- **Attempted 40 FT:** 44 vs. Indiana, 11/26/09
- **Attempted 50 FT:** **54 at Wake Forest, 01/6/05

SCORING

- **Scored 80 points:** 103 vs Coppin State, 11/13/16
- **Scored 90 points:** 103 vs Coppin State, 11/13/16
- **Scored 100 points:** 103 vs Coppin State, 11/13/16

REBOUNDING

- **Had 50 rebounds:** 50 vs Coppin State 11/13/16
- **Had 60 rebounds:** 63 at Alabama, 12/21/12
- **Had 70 rebounds:** **77 vs. Rider, 12/19/96

ASSISTS

- **Had 20 assists:** 25 vs Coppin State, 11/13/16
- **Had 30 assists:** **37 vs. Cleveland State, 11/29/95

STEALS

- **Had 15 steals:** 15 at Wake, 01/10/16
- **Had 20 steals:** 22 vs UMEs, 12/17/13
- **Had 25 steals:** 26 vs. Clemson, 02/12/12
- **UVA forced 30 turnovers:** 31 at Wake, 01/10/16
- **UVA committed 30 turnovers:** 32 at Ala-bama, 12/21/12

MISCELLANEOUS

- **UVA in OT:** L, 68-63 at Pitt 2/19/15
- **UVA in 2OT:** L, 73-70 at Alabama, 12/21/12
- **UVA in 3OT:** W, 105-100 at North Carolina, 01/15/98
- **UVA shot 60% from the floor in first half:** .621 (18-29) at Clemson 2/01/15
- **UVA shot 60% from the floor in second half:** .655 (19-29) at Georgia Tech 1/17/16
- **UVA shot less than 20% from floor first half:** .192 (5-26) at Maryland, 12/06/12
- **UVA shot less than 30% from floor first half:** .267 (8-30) vs Notre Dame 01/07/15
- **UVA shot less than 30% from floor 2nd half:** .200 (6-30) at Northwestern, 12/1/16
- **UVA scored less than 15 points in first half:** 13 at Florida State, 01/8/06
- **UVA held opp to less than 15 points first half:** 14 vs. Virginia Tech, 01/03/13
- **UVA held opp to less than 10 points first half:** 6 vs. Norfolk State, 12/28/12
- **UVA held opponent to less than 30 points:** 23 vs. Norfolk State, 12/28/12
- **UVA failed to make at least one three-pointer:** 0-10 vs. Kansas State, 11/29/13
- **Opponent failed to make at least one three-pointer:** 0-9 at Louisville, 01/18/15

**school record


2
JAE'LISA ALLEN

 Forward • Junior
6-2
White Hall High
Pine Bluff, Ark.

4
DOMINIQUE TOUSSAINT

 Guard • Freshman
5-9
Christ the King
Staten Island, N.Y.

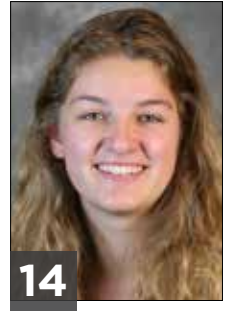
10
J'KYRA BROWN

 Guard • Junior
5-11
Rocky Mount High
East Carolina Univ.
Rocky Mount, N.C.

12
BREYANA MASON

 Guard • Senior
5-8
Forest Park High
Woodbridge, Va.

13
JOCELYN WILLOUGHBY

 Guard • Freshman
6-0
Newark Academy
East Orange, N.J.

14
LISA JABLONOWSKI

 Forward • Freshman
6-3
Lycee des Garcons
Ernster, Luxembourg

21
LAUREN MOSES

 Forward • Junior
6-2
Rancocas High
Mount Holly, N.J.

23
ALIYAH HULAND EL

 Guard • Junior
6-1
Randolph High
Randolph, N.J.

30
FELICIA AIYEOTAN

 Center • Freshman
6-9
Blair Academy (N.J.)
Lagos, Nigeria

32
MONÉ JONES

 Forward • Sophomore
6-2
Riverside High
Durham, N.C.

35
SHAKYNA PAYNE

 Forward • R-Freshman
6-1
SW Atlanta Christian
Academy
Acworth, Ga.

JOANNE BOYLE

 Head Coach
Sixth Season

TIM TAYLOR

 Assistant Coach
First Season

LA'KESHIA FRETT MEREDITH

 Assistant Coach
Fourth Season

KATHERINE GRAHAM

 Assistant Coach
First Season

SARAH HOLSINGER

 Asst. AD/Operations
Sixth Season