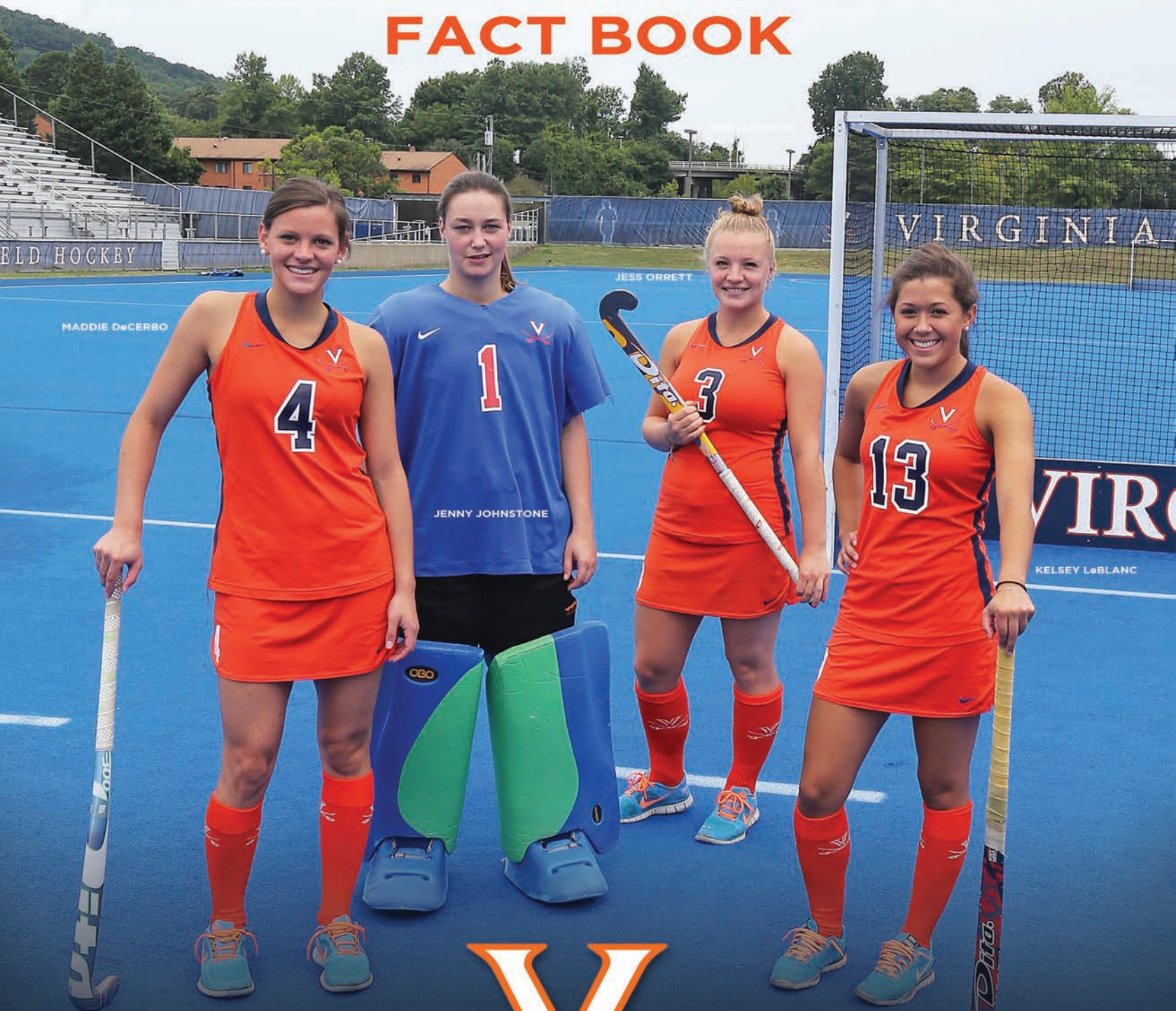


# VIRGINIA

2014 CAVALIER FIELD HOCKEY

## FACT BOOK



*Uncompromised Excellence*





## TABLE OF CONTENTS

<b>Pages</b> .....	<b>Content</b>
2.....	2014 Roster/Pronunciation Guide
3-4.....	Head Coach Michele Madison
5-6.....	Assistant Coaches/Support Staff
7-15.....	2014 Player Bios
16.....	2013 Final Statistics and Results
17-19.....	Cavalier Program Records
20.....	Cavaliers and USA Field Hockey
21-23.....	Honors and Awards
24-25.....	Academic Accolades
26.....	Series Records
27-33.....	Year-by-Year Results
34-35.....	All-Time Letterwinners

## VIRGINIA MEDIA RELATIONS

### Melissa Dudek

Assistant Athletics Media Relations Director,  
Field Hockey Contact  
Phone: (434) 962-0579  
Email: mdudek@virginia.edu

## 2014 PRESEASON NFHCA POLL

	<b>Institution</b>	<b>Points</b>
1.	University of Maryland	881 (22)
2.	University of North Carolina	855 (8)
3.	University of Connecticut	831 (14)
4.	Duke University	766 (1)
5.	Syracuse University	729 (1)
6.	University of Virginia	572
7.	Princeton University	571
8.	Penn State University	552
9.	Old Dominion University	516
10.	University of Massachusetts	406
11.	Wake Forest University	381
12.	Stanford University	366
13.	Boston College	361
14.	Northwestern University	303
15.	University of Louisville	258
16.	Michigan State University	216
17.	University of Michigan	204
18.	University of Delaware	194
19.	American University	186
20.	University of Iowa	173 (1)

## 2014 SCHEDULE

Aug. 29	@William & Mary	4:30 p.m.
Aug. 31	@Penn State	12 p.m.
Sept. 4	@Iowa	4 p.m.
<b>Sept. 7</b>	<b>PRINCETON</b>	<b>1 p.m.</b>
<b>Sept. 9</b>	<b>MIAMI (OHIO)</b>	<b>1 p.m.</b>
<b>Sept. 12</b>	<b>LOUISVILLE</b>	<b>6 p.m.</b>
<b>Sept. 14</b>	<b>RUTGERS</b>	<b>12 p.m.</b>
Sept. 19	@Duke	6 p.m.
<b>Sept. 21</b>	<b>ALBANY</b>	<b>1 p.m.</b>
<b>Sept. 26</b>	<b>SYRACUSE</b>	<b>6 p.m.</b>
<b>Sept. 28</b>	<b>VERMONT</b>	<b>1 p.m.</b>
Oct. 3	@North Carolina	6 p.m.
<b>Oct. 5</b>	<b>OHIO STATE</b>	<b>1 p.m.</b>
Oct. 10	@Richmond	5:30 p.m.
<b>Oct. 12</b>	<b>WAKE FOREST</b>	<b>1 p.m.</b>
<b>Oct. 17</b>	<b>LIBERTY</b>	<b>6 p.m.</b>
<b>Oct. 19</b>	<b>OLD DOMINION</b>	<b>1 p.m.</b>
Oct. 24	@Boston College	7 p.m.
Oct. 26	@Boston University	12 p.m.
Nov. 7-10	ACC Championship <sup>1</sup>	TBA
Nov. 16-17	NCAA First/Second Rounds	TBA
Nov. 22-24	NCAA Semifinals/Finals <sup>2</sup>	TBA

<sup>1</sup> at Duke - Durham, N.C.

<sup>2</sup> at Field Hockey & Lacrosse Complex - College Park, Md.

\* ACC Game | All Times Eastern Time

## 2014 ACC PRESEASON POLL

	<b>Team (Points)</b>	<b>Points</b>	<b>2013 Record</b>
1.	North Carolina (2)	31	18-6, 3-3
2.	Duke (3)	30	17-7, 3-3
3.	Syracuse (1)	29	16-4, 4-2
4.	Boston College (1)	16	12-8, 1-5
	Wake Forest	16	12-9, 1-5
6.	Virginia	14	15-6, 3-3
7.	Louisville	11	15-5, 6-1 BIG EAST

## 2014 PRESEASON ALL-ACC TEAM

Emma Plasteras, Sr., M, Boston College  
Aileen Johnson, Jr., M, Duke  
Amanda Kim, Jr., D, Duke  
Lauren Blazing, R-Jr., GK, Duke  
Emily Wold, Jr., M/B, North Carolina  
Charlotte Craddock, Sr., F, North Carolina  
Emma Bozek, Jr., M/F, North Carolina  
Kati Nearhouse, R-Sr., F, Syracuse  
Alyssa Manley, Jr., M, Syracuse  
Tara Vittese, Fr., M, Virginia  
Anna Kozniuk, Sr., B/M, Wake Forest  
Georgia Holland, R-Sr., M/B, Wake Forest



# 2014 VIRGINIA FIELD HOCKEY ROSTER



No.	Name	Pos.	Ht.	Yr.	Hometown/Previous School(s)
1	Jenny Johnstone	GK	5-6	Sr.	Paisley, Scotland/The High School of Glasgow
2	Katie Kelly	M	5-7	So.	Phoenixville, Pa./Archbishop Carroll
3	Jess Orrett	M	5-4	Sr.	Wells, England/Millifield School
4	Maddie DeCerbo	B	5-5	Sr.	Surf City, N.J./Southern Regional
5	Caleigh Foust	S	5-5	So.	Bryn Mawr, Pa./Harriton
6	Tollie Bell	B	5-5	Sr.	Norfolk, Va./Maury/North Carolina
7	Taylor Brown	S	5-3	Jr.	Charlottesville, Va./The Covenant School
8	Tara Vittese	M	5-10	Fr.	Cherry Hill, N.J./Camden Catholic
9	Macy Peebles	M	5-4	So.	Yorktown, Va./Tabb
10	Emilia Tapsall	M/S	5-5	So.	Old Greenwich, Conn./Greenwich Academy
11	Lucy Hyams	M	5-6	So.	Whitstable, England/Kent College
12	Rachael Ulsh	B	5-7	Fr.	Centreville, Va./Westfield
13	Kelsey LeBlanc	B/M	5-1	Sr.	Haverford, Pa./Haverford
14	Emily Faught	B	5-7	So.	Newtown Square, Pa./Academy of Notre Dame
15	Emilie van Zinnicq Bergmann	F/M	5-5	Fr.	Dordrecht, The Netherlands/Stedelijk Dalton Lyceum
17	Nadine de Koning	M/B	5-5	Fr.	Laren, The Netherlands/Laar & Berg College Preparatory
19	Liz Stern-Green	S	5-5	Fr.	Hummelstown, Pa./Mercersburg Academy
20	Becca Zamojcin	B	5-5	Fr.	Phoenixville, Pa./Archbishop Carroll
21	Riley Tata	S	5-7	So.	Virginia Beach, Va./Norfolk Academy
22	Megan Kelly	M/B	5-7	So.	Phoenixville, Pa./Archbishop Carroll
23	Jeannie Blackwood	B	5-7	Fr.	Virginia Beach, Va./Frank W. Cox
24	Carrera Lucas	GK	5-10	Fr.	Brooklandville, Md./St. Paul's School for Girls
98	Rebecca Holden	GK	5-2	R-So.	Fishing Creek, N.J./Lower Cape May

**Head Coach:** Michele Madison, ninth season (Rutgers, 1984)  
**Assistant Coaches:** Shawn Hindy, second season (San Diego State, 2004)  
 Annie Zinkavich, third season (Penn State, 2004)  
**Volunteer Assistant:** Maarten Slinger, first season (Hogeschool van Amsterdam, 2009)  
**Athletic Trainer:** Colby Mangum, second season (North Carolina, 2013)

PRONUNCIATION GUIDE		
5	Caleigh Foust	CAL-ee (like California)
9	Tara Vittese	TAR-uh Vah-TEECE
13	Kelsey LeBlanc	LUH-Blahnk
14	Emily Faught	FOUGHT
15	Emilie van Zinnicq Bergmann	EMILY van ZINK BERG-man
16	Nadine de Koning	Nah-DEEN de CONE-ing
20	Becca Zamojcin	ZAM-oh-CHIN
21	Riley Tata	TAY-tuh
	Annie Zinkavich	zin-KAY-vich





Head coach **Michele Madison**, a member of the National Field Hockey Coaches Association Hall of Fame and a former assistant US National Team and Olympic coach, has spent eight seasons at the helm of the Cavalier field hockey program, leading UVa to seven NCAA Tournament berths, including national semifinals appearances in 2009 and 2010.

In November of 2013, Madison was inducted into the NFHCA Hall of Fame, the first Virginia coach to receive this honor. Since 2000 when the organization announced its initial Hall of Fame class, the coaches' association has honored 54 individuals, including three 2013 inductees.

Madison, who in 2012 became just the 26th head coach in NCAA Division I history to hit the 300-win mark, currently ranks ninth among active coaches in career wins and is two W's shy of topping the UVa list for career victories.

During her tenure in Charlottesville, Madison has recruited and coached a pair of four-time All-Americans, Paige Selenski and Elly Buckley. Selenski and Buckley are two of only 11 players in ACC history to earn All-American honors four times and two of 13 players to be a four-time All-ACC honoree.

Madison, a former member of the NCAA National Field Hockey Committee, is in her 25th overall season as a collegiate head coach. She is the only person to take three different Division I programs (Temple, Michigan State and Virginia) to the NCAA Tournament and her teams have consistently been ranked in the top-10. In addition to her experience in the college ranks, Madison also is the only active Division I head coach to be a part of two United States Olympic staffs, having assisted the 1988 Olympic Team in Seoul as a manager and served as the head goalkeeper coach with the 1996 squad in Atlanta.

Last season (2013) should have been a "rebuilding" year for the Cavaliers with the team losing a pair of US National Team players/Olympians, Selenski and Michelle Vittese, to graduation. The preseason ACC poll had UVa picked to finish second-to-last in the conference. Instead, Virginia rose to as high as No. 4 in the NFHCA poll, finishing the regular season ranked No. 5 and earning the program's 19th bid to the NCAA Tournament. ACC Freshman of the Year Lucy Hyams anchored the midfield, helping to lead Buckley and a pair of freshmen strikers, Riley Tata and Caleigh Foust, to create a very potent attack. The defense also stepped up, registering six shutouts in the regular season. Buckley led the ACC in seven different categories including points, goals and defensive saves.

In 2012, Madison hit a pair of career benchmarks. She won the 300th game of her career with the Cavaliers' 5-4 victory over No. 3 Old Dominion on Sept. 2, becoming just the 26th head coach in NCAA Division I history to hit the 300-win mark. Madison currently ranks ninth among active coaches in career wins. She also had her 100th win at Virginia with the Cavaliers 3-2 victory over Iowa in the first round of the NCAA Tournament, tying her for second place on the Cavalier career victories list.

Madison was named the 2012 Coach of the Year in honors announced by the Virginia Sports Information Directors (VaSID), her fourth time winning the honor.

Two of Madison's All-Americans at Virginia, Paige Selenski and Michelle Vittese, helped the U.S. National Team to its first gold medal at the Pan American Games in October 2011. Vittese, the 2012 USA Field Hockey Player of the year, and Selenski also competed with the US squad at the 2012 London Olympics.

Madison led the Cavaliers back to the NCAA Tournament in 2012 after missing out in 2011. Not only did Virginia earn a berth, they had the privilege of hosting the first and second round games. After a victory over Iowa in the first round, UVa fell in the second round to eventual national champion Princeton.

2012 saw a rewriting of the record book as Selenski became both the Virginia and the ACC career points leader. Selenski also scored the 100th goal of her career in the NCAA first round tournament game against Iowa, becoming just the



## MADISONS COACHING RECORD

Year	School	Record	Postseason
1989	Temple	12-8-2	
1990	Temple	18-6-0	NCAA Quarterfinals
1991	Temple	15-6-2	NCAA Quarterfinals A-10 Tournament Champions
1992	Temple	11-8-2	NCAA First Round
1993	Michigan State	6-13-0	
1994	Michigan State	4-14-2	
1995	Michigan State	8-12-0	
1996	Michigan State	12-9-0	
1997	Michigan State	11-10-0	
1998	Michigan State	8-12-0	
1999	Michigan State	9-11-0	
2000	Michigan State	11-9-0	
2001	Michigan State	16-6-0	NCAA Quarterfinals Big Ten Champions
2002	Michigan State	23-3-0	NCAA Semifinals Big Ten Tournament Champions
2003	Michigan State	17-5-0	NCAA Quarterfinals Big Ten Champions Big Ten Tournament Champions
2004	Michigan State	18-4-0	NCAA Semifinals Big Ten Champions
2005	Michigan State	12-8-0	
2006	Virginia	14-8-0	NCAA Quarterfinals
2007	Virginia	11-10-0	NCAA First Round
2008	Virginia	14-9-0	NCAA Quarterfinals
2009	Virginia	20-4	NCAA Semifinals
2010	Virginia	18-4	NCAA Semifinals
2011	Virginia	8-12	
2012	Virginia	16-6	NCAA Second Round
2013	Virginia	15-6	NCAA First Round
<b>Totals</b>	<b>25 seasons</b>	<b>327-203-8</b>	<b>14 NCAA Tournament Appearances</b>



tenth player in NCAA history and the second in the ACC and at UVa to score 100 career goals. She became a four-time All-American and was just the ninth player in ACC history to earn All-Conference honors four times. Vittese and Elly Buckley earned their third All-American honors.

Of the ten players to score 100 or more goals in NCAA history, Madison recruited two of them. In addition to Selenski, Madison also signed Kristy Gleason (1989-93) at Iowa. Gleason finished her career ranked third in the NCAA record book with 132 goals for the Hawkeyes.

The Cavaliers advanced the NCAA semifinals in 2010 after beating Michigan State (3-2 in overtime) and Princeton (4-2) to join Maryland, North Carolina and Ohio State in the national semifinals. Virginia finished the season ranked No. 3 by the National Field Hockey Coaches Association.

Virginia made its third trip to the NCAA semifinals in 2009 under Madison, defeating Richmond and Michigan State (in overtime) en route to a final four berth. The Cavaliers also advanced to the championship game of the ACC Tournament, playing for the conference title on their home field. The team set records for wins (20) and games played (24) in a season.

UVa's Paige Selenski and Michelle Vittese were both named to the United States National Team in the summer of 2010 and earned their first international caps in matches with the English and Irish national teams that summer.

Selenski and Vittese were each named first-team All-Americans by the NFHCA in 2010 and teammate Elly Buckley was a third-team honoree, marking the second consecutive year three Cavaliers earned the distinction of All-American. Additionally, Virginia placed seven student-athletes on the all-region team, including a school record four first-team members (Buckley, Selenski, Vittese and Rachel Jennings). Buckley was also selected to the national all-rookie team, named by [womensfieldhockey.com](http://womensfieldhockey.com), becoming the sixth Virginia named to the squad under Madison.

In 2009, three Cavaliers were named NFHCA All-Americans, including Selenski (first team), Inga Stockel (second team) and Vittese (third team) Selenski, a two-time Honda Award semifinalist, joined Stockel and Vittese on the All-ACC team. For the second straight year, Virginia put five members on the all-region squad and Charlotte van den Broek was honored as part of the national all-rookie team.

During the 2008 campaign, Virginia returned to the quarterfinals of the NCAA Tournament and freshman Paige Selenski made program history, becoming the first Cavalier to be named the National Rookie of the Year. UVa finished the season with a No. 12 ranking, had two All-Americans and All-ACC selections in senior Inge Kaars Sijpesteijn and Selenski, and had five team members picking up all-region honors, with freshmen Michelle Vittese and Floor Vogels as well as junior Traci Ragukas joining Kaars Sijpesteijn and Selenski. Virginia also continued to put at least one member on the national all-rookie team for the third time in program history. Selenski and Vittese, who both represented the United States at the Junior World Cup in Boston, were named to the squad.

In 2007, Madison helped lead Virginia to its second straight NCAA Tournament appearance. UVa was ranked eighth in the nation to start the year, and Ragukas and Kaars Sijpesteijn were both named to the NFHCA second-team all-region squad. Kaars Sijpesteijn additionally received All-America and All-ACC honors for the second consecutive season. Also for the second straight year, Virginia had a member selected to the National All-Rookie squad in first-year Shelly Edmonds.

In her first year in Charlottesville, Madison orchestrated Virginia's return to the top-10 and was named the 2006 National Coach of the Year by [womensfieldhockey.com](http://womensfieldhockey.com). That year, Virginia rose to as high as No. 4 in the nation and advanced to the quarterfinals of the NCAA Tournament before ending the season with a 14-8 record against the nation's fifth-toughest schedule. Madison coached Kaars Sijpesteijn to first-team All-America honors, Virginia's first first-team All-American since 1998. She also mentored Ragukas to National Rookie Team recognition, the first such honor for a Cavalier in school history.

The former head coach at Michigan State from 1993-2005, Madison led the Spartans to their first-ever No. 1 ranking. Michigan State advanced to the NCAA Tournament four times, including two NCAA semifinal berths (2002, 2004) and two



quarterfinal appearances (2001, 2003) during her tenure in East Lansing. Madison, named the 2001 Big Ten Coach of the Year, also guided the Spartans to back-to-back conference titles in 2001 and 2002. During the 2002 season, she picked up another coaching honor, being tabbed the West Region Coach of the Year. Madison left Michigan State as the school's all-time leader in victories.

The Philadelphia native spent four seasons as the head coach at Temple prior to her appointment at Michigan State. At Temple, she took the team to national championship contention in just her second year at the helm. During Madison's tenure, the Owls compiled a 53-27-6 record and appeared in three NCAA Tournaments, twice advancing to the quarterfinals. Temple also won the A-10 Conference Tournament Championship in 1991.

Madison additionally served a two-year (1989-90) stint as the assistant coach for the Owl women's lacrosse team that advanced to the NCAA Semifinals both seasons. During her stay in Philadelphia, Madison coached 12 All-Americans, 21 all-region selections, three Academic All-Americans, two National Team members and one Honda Broderick award winner.

Prior to her position at Temple, Madison served as an assistant coach at Iowa for seven seasons (1982-89). During that span, the Hawkeyes advanced to the Final Four four times and captured their only NCAA championship title in 1986.

A former member of the U.S. Field Hockey Board of Directors and the United States Field Hockey Foundation, Madison has been integrally involved in the U.S. Field Hockey community. In addition to her stint with the 1988 and 1996 Olympic Teams, she was an assistant coach at the 1994 World Cup in which the United States won the bronze, their highest finish in history.

She also served as a notational analyst for the 1998 World Cup in Utrecht for England. Madison, who spent two and a half years on the coaching staff for the U.S. National Team, served as head coach on the 2003 U.S. Under-20 team, after coaching at the prestigious "A" camp for the U.S. Junior National Team trials. In the spring of 2002, Madison assisted the U.S. National Team at the Champions Challenge in South Africa. In the summer of 2005, Madison was named to the USFHA Board of Directors and was part of the advisory committee that made the decision to hire Terry Walsh, the Technical Director of High Performance for USA Field Hockey.

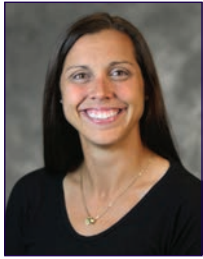
Madison has also coached the Midwest Cyclones of the United Airlines Field Hockey League, leading the team to runner-up finishes in the championship game in 2000 and 2001.

Madison is a 1982 physical education graduate of Rutgers University, where she played field hockey and lacrosse. She earned her master's degree in athletic administration from Iowa in 1984. Madison was inducted into the Gloucester County (N.J.) Hall of Fame in 1993 and the Williamstown (N.J.) High School Hall of Fame in 1992.





# ASSISTANT COACHES



**Annie Zinkavich**, who joined the Virginia field hockey staff in February 2012, begins her third season with the Cavaliers, coaching the goalkeepers and spearheads all recruiting efforts. She also is in charge of alumni outreach efforts.

In her first season at Virginia (2012), Zinkavich helped mentor sophomore goalie Jenny Johnstone, who led the ACC in save percentage most of the season and was named the All-ACC goalkeeper for her efforts as well as earning a spot on the All-Region first team.

Zinkavich arrived in Charlottesville after spending the previous six seasons as an assistant coach at her alma mater, Penn State. With the Nittany Lions, she worked primarily with the goalkeepers and assisted in the day-to-day operations of the program.

Zinkavich helped Penn State to five NCAA Tournament appearances and coached the Nittany Lions in the 2007 national championship game. During her time there, she also mentored the goalkeepers to three first team All-Big Ten and four All-America honors. Penn State won the Big Ten regular season title in 2009 and claimed the tournament championship in 2011.

Prior to her return to Penn State, Zinkavich spent two years at Bucknell where she served as a graduate assistant coach. Under her guidance, senior goalkeeper Liz Jordan was named the Patriot League's goalkeeper of the year.

Zinkavich, a goalkeeper, played four seasons at Penn State (2000-03) where she was a three-time NFHCA All-Midwest regional selection and helped the Nittany Lions to the national title game in 2002. She was also selected to the senior all-star game in 2003.

Zinkavich received her bachelor's degree in psychology from Penn State in 2004. A native of Kingston, Pa., she was inducted into the Wyoming Seminary Hall of Fame in 2011.



**Shawn Hindy** a former US National Field Hockey team member and a former US National Indoor Field Hockey team member, joined the Virginia field hockey staff in July 2013.



Hindy was a three-time USFHA Field Hockey Player of the Year while playing for the United States Men's National Field Hockey Team from 1995-2007. He served as captain from 2001-04 and has played in more than 60 international matches for the United States including participating in the 1999 Pan American Games and the 2000 Americas Cup. From 2002-12, he was a member of the United States Men's National Indoor Field Hockey Team, playing in the 2003 World Cup in Germany and the 2011 World Cup in Poland.

From 2007-2010, Hindy was the head coach of the United States Women's Indoor National Field Hockey Team. In November of 2008, he led his squad to a Silver Medal at the Pan-American Cup Indoor Tournament in Argentina.

Hindy was an assistant coach at Michigan State for the 2011 and 2012 seasons. He previously served as an assistant field hockey coach at Radford University from 2004-06 while also working towards receiving his MBA.

Prior to his time at MSU, Hindy coached at Lehigh High School, serving as the head field hockey coach as well as the athletic director for the Pennsylvania school from 2006-10. He led the LHS field hockey team to a State Championship title in 2009, which was the first State Championship of any sport in the history of the school. He won four district championships, four league championships and advanced to the state playoffs all five years as a head coach. Hindy compiled a 110-12-1 record in his coaching tenure, including a perfect 26-0 in 2009. In four years, the coach sent 25 players to play NCAA field hockey around the nation. In 2010, Hindy was named the NFHCA Mideast (Pennsylvania) Coach of the Year.

Hindy is a member of the USAFH Board of Directors, serving on the USA Field Hockey Advancement Committee and also being named an alternate for the USOC Athlete Advisory Council.

He earned a Bachelor's Degree in Financial Services with a minor in Spanish from San Diego State University in May of 2004.







**Maarten Slinger** will be serving as a volunteer coach for the Virginia field hockey team's 2014 season.

Slinger, who resides in Alkmaar, The Netherlands, is joining the coaching staff after spending the past five summers working at Virginia field hockey summer camps. Slinger has been a coach, training coordinator and a technical coordinator, adviser and director for Dutch hockey clubs and the Royal Dutch Hockey Federation since 2002, working with both women's and men's teams at a variety of levels.

Slinger earned a Bachelor of Aviation Engineering degree from Amsterdamse Hogeschool voor Techniek in Amsterdam. He is currently employed at transavia.com, a Dutch based airline operating as an independent part of the Air France-KLM group, as a system and powerplant engineer.

## SUPPORT STAFF

- Colby Mangum ..... Athletic Trainer (Grad Assistant)
- Lauren Simard ..... Undergrad Assistant Athletic Trainer
- Blair Putnam.....Athletic Trainer (Mentor)
- William Lynch .....Student Manager
- Steven Cuccia .....Strength & Conditioning Coach
- Jim Bauman..... Sports Psychologist
- Kelly Rossi.....Nutritionist
- Megan Dailey ..... Academic Affairs
- Kate Martin ..... Game Operations
- Sarah Whitney ..... Marketing
- Ryan Mahanes .....Video Services
- John "Cowboy" Truslow ..... Equipment





## #6 TOLLIE BELL

**JUNIOR • 5-5 • BACK**  
**NORFOLK, VA.**  
**MAURY HIGH SCHOOL**



### 2013

- Made her collegiate debut on Aug. 30 against Louisville
- Appeared in three games

### 2012

- Sat out the 2012 season after transferring from UNC

### 2011

- Redshirted at North Carolina

### HIGH SCHOOL

- Top scorer in the nation in 2008 with 42 goals and totaled more than 100 in her career
- 2010 Eastern District Player of the Year
- Three-time all-state, all-region and all-district honoree (sophomore through senior years)
- Three-time member of the Virginian-Pilot All-Star team
- Helped her team to four district championships
- Named 2011 U.S. Army Reserve Scholar-Athlete of the Year
- Gold medalist at 2009 Junior Olympics
- Gold medalist at 2011 National Indoor Tournament and 2010 National Hockey Festival

### PERSONAL

- Full name is Tolliver Anne Bell
- Parents are Susan and George Nottingham and Rock and Karen Bell
- Has four siblings.
- Psychology major

### BELL'S CAREER STATISTICS

Year	GP/GS	Shots	Goals	Assists	Points	DS
2013	23/0	0	0	0	0	0

## #23 JEANNIE BLACKWOOD

**SOPHOMORE • 5-7 • BACK**  
**VIRGINIA BEACH, VA.**  
**FRANK W. COX HIGH SCHOOL**



### 2013

- Played in 20 games with 12 starts
- Made her collegiate debut in the season-opener Aug. 30 vs. Louisville
- Made her first career start on Sept. 20 against North Carolina
- Started each of the final seven games of the regular season
- Was part of a defensive line that logged six shutouts in the regular season
- Had three defensive saves in the regular season, stopping shots against Maine, Northwestern and Albany

### High School

- Player field hockey, soccer, and basketball at Frank W. Cox High School
- 2012 first team All-State (Virginia)
- 2012 first team All-Beach District and first team All-Eastern Region
- 2011 second team All-Beach District

### Personal

- Daughter of Nancy and Vaden Blackwood
- Has three older brothers, George, Scott, and Chris Blackwood, and an older sister, Georgia Kubic
- Systems Engineering major

### BLACKWOOD'S CAREER STATISTICS

Year	GP/GS	Shots	Goals	Assists	Points	DS
2013	20/12	0	0	0	0	3

## #7 TAYLOR BROWN

**JUNIOR • 5-3 • STRIKER**  
**CHARLOTTESVILLE, VA.**  
**THE COVENANT SCHOOL**



### 2013

- Appeared in 17 games with one start against Radford
- Scored her lone goal of the season, the second of her career, at Vermont (Sept. 15)

### 2012

- Played in all 22 games with six starts
- Recorded first career goal vs. Yale (Oct. 6)
- Had an assist against Richmond (Aug. 29)
- Took a season-high three shots (two on-goal) against Saint Joseph's (Sept. 30)
- Scored a goal in the exhibition game against the US U-21 squad

### High School

- Three-time VISAA all-state selection
- 2010 VISAA Division II Player of the Year
- Three-time all-state tournament team
- Four-time All-League of Independent Schools honoree
- Led Covenant in scoring for three seasons
- Two-time Futures Elite selection
- Played on Field Hockey Life club team
- Also played lacrosse

### Personal

- Daughter of Todd and Nicole Brown
- Has a younger brother, Hunter
- Undeclared major

### BROWN'S CAREER STATISTICS

Year	GP/GS	Shots	Goals	Assists	Points	DS
2012	22/6	12	1	1	3	0
2013	17/1	4	1	1	3	0
Totals	39/7	16	2	2	6	0





## #17 NADINE DE KONING

**FRESHMAN • 5-5 • MIDFIELD/BACK  
LAREN, THE NETHERLANDS  
LAAR & BERG COLLEGE PREPATORY**



### High School/Club Hockey

- Played both indoor and outdoor field hockey with club teams in The Netherlands in the National League, the highest national level, and has made it all the way to A1
- 2011-12 squad finished in second place in the top league and her indoor squad finished third in the national finals
- In 2012-13, her Laren team was in the top-six in The Netherlands
- Has a referee's certificate in the B-category (age 14-15) and has served as a referee for other youth teams.
- In 2010, played on a regional team with the 15 best players from the region

### Personal

- Daughter of Hans de Koning and Mariette de Koning-Orlandini
- Father, Hans, played field hockey at the top level of the Dutch National League for Pinoké
- Has an older brother, Robin, and a younger sister Julie
- In academic honors, was a two-time Honor Award 6 VWO and Honor Award 5 VWO winner
- Undeclared major

## #4 MADDIE DECERBO

**SENIOR • 5-5 • BACK  
SURF CITY, N.J.  
SOUTHERN REGIONAL HIGH**



### 2013

- Played in 18 games with five starts
- Took shots against James Madison (Sept. 25) and William & Mary (Oct. 13)

### 2012

- 2012 All-Atlantic Coast Conference Academic Field Hockey Team
- Started all 22 games in the backfield
- Logged a defensive save at William & Mary (Sept. 11)

### 2011

- Played in all 20 games with 19 starts in the backfield as a freshman
- Recorded first career defensive save at Northwestern (Sept. 18)

### High School

- 2010 Ocean County Player of the Year
- 2010 First Team All-Shore Conference and All-Group 4
- 2008 and 2009 Second Team All-Shore Conference
- Three-time First Team All-Ocean County
- Five-time participant in National Futures Championships
- Member of the New Jersey Jr High Performance team
- Two-time participant in Junior National Camp

### Personal

- Daughter of Michael and Marcy DeCerbo
- Has two older sisters, Lauren and Alex
- Sister, Lauren, played field hockey at Rutgers
- Sister, Alex, was a member of the cheerleading team at Stockton College
- Public Policy & Leadership major

### DECERBO'S CAREER STATISTICS

Year	GP/GS	Shots	Goals	Assists	Points	DS
2011	20/19	0	0	0	0	1
2012	22/22	0	0	0	0	1
2013	18/5	2	0	0	0	0
Totals	42/41	0	0	0	0	2

## #14 EMILY FAUGHT

**SOPHOMORE • 5-7 • BACK  
NEWTON SQUARE, PA  
ACADEMY OF NOTRE DAME**



### 2013

- Appeared in 12 games with two starts
- Made her collegiate debut on Sept. 15 at Vermont
- Made her first career start on Sept. 27 at Wake Forest
- Also started on Oct. 1 against Radford

### High School

- Played field hockey, basketball, lacrosse and was a sprinter • 2012 Harrow Sports/NFHCA High School All-Pennsylvania Region second team
- Two-time first team All-Delco (2011-12)
- Three-time first team All-InterAc (2010-11)
- Two-time first team All-Main Line (2011-12) and 2010 second team All-Main Line
- 2011-13 Junior US Women's Indoor Team Field Hockey

### Personal

- Daughter of Robert and Melissa Faught
- Grandfather, Robert Faught, played basketball and tennis at Notre Dame (1940-44)
- Has an older brother, Connor, and two older sisters, Caroline and Elizabeth
- Sister, Caroline, played water polo at Michigan (2001-05)
- Undeclared major

### FAUGHT'S CAREER STATISTICS

Year	GP/GS	Shots	Goals	Assists	Points	DS
2013	12/2	0	0	0	0	0



## #5 CALEIGH FOUST

**SOPHOMORE • 5-5 • STRIKER**  
BRYN MAWR, PA.  
HARRITON HIGH SCHOOL



### 2013

- All-ACC Academic Team
- Finished the season ranked second on the team with 12 goals and 24 points
- Appeared in all 21 games with 14 starts
- Made her collegiate debut on Aug. 30 against Louisville
- Scored the first goal of her career in the second half against Louisville
- Was named the ACC Player of the Week (Sept. 9) after scoring hat tricks in back-to-back games at Yale (Sept. 6) and at No. 8 Old Dominion (Sept. 8)
- Had three game-winning goals, netting them against Yale and Old Dominion as well as against No. 13 Northwestern (Sept. 22)
- Played in all 19 regular-season games with 12 starts
- Scored the Cavaliers lone goal in the ACC Tournament game against Duke

### High School

- Four-year varsity field hockey player at Harriton High School
- Two-time First Team All-Central League
- Two-time MVP
- Also played lacrosse at HHS (midfield)
- All-American in lacrosse
- First team All-Central league in lacrosse and team MVP junior year
- National Honor Society member

### Personal

- Daughter of Lorie and Mark Foust
- Has an older brother, Shane, a younger brother, Brandon, and a younger sister Alexa
- Undeclared major

### FOUST'S CAREER STATISTICS

Year	GP/GS	Shots	Goals	Assists	Points	DS
2013	21/14	50	12	0	24	0

## #98 REBECCA HOLDEN

**R- SOPHOMORE • 5-2 • GOALIE**  
FISHING CREEK, N.J.  
LOWER CAPE MAY



### 2013

- Redshirt season

### 2012

- Played in 10 games with four starts, amassing a 3-1 record
- Allowed seven goals (1.59 GAA) with 19 saves (73.1 save percentage) in her rookie campaign
- First start of her career came at Penn State (Aug. 26). She took the loss, with three saves and two goals allowed in 35 minutes of play
- Earned her first victory, getting the start against Towson (Aug. 31)
- Had a season-high eight saves at William & Mary, playing the first 44:52 of the game
- Played her first complete game against Saint Joseph's (Sept. 30)
- Made four saves without allowing a goal in the final 29 minutes of the NCAA Tournament second round game against Princeton
- Did not allow a goal in her final three appearances of the season and was a part of four team shutouts
- Also joined the Virginia softball team for second half of its season, making one appearance as a pinch runner

### International (2013)

- Named to the United States' Under-19 Junior National Squad
- Played in five games, including taking on the Dutch Junior National Team, on a tour of The Netherlands

### High School

- Two-time first team All-CAL Division
- Two-time Herald First Team League MVP
- Led squad to two CAL Division championships
- Totaled 560 saves and .874 save percentage during prep career
- Served as team captain
- Played for Spirit of USA club team
- Participated in Junior Olympics, National Festival and Disney Showcase
- Won gold medal in 2011 at the National Festival
- National Honor Society member
- Served as president of Tri-M Music Honor Society
- Also played softball

### Personal

- Daughter of Michael and Sharon Holden
- Has an older sister, Amber, and two younger brothers, Michael and Gregory
- English major

### HOLDEN'S CAREER STATISTICS

Year	GP/GS	Min	Saves	GA	Save %	GAA	SO
2012	10/4	308:22	19	7	.731	1.59	0
2013	DNP						
Totals	10/4	308:22	19	7	.731	1.59	0





## #11 LUCY HYAMS

**SOPHOMORE • 5-6 • MIDFIELD**  
**WHITSTABLE, KENT, ENGLAND**  
**KENT COLLEGE**



### 2013

- ACC Freshman of the Year, the fourth UVa player to earn the honor
- All-ACC Second Team
- Longstreth/NFHCA All-South Region Second Team
- VaSID State Rookie of the Year
- VaSID All-State First Team
- Played in all 19 regular-season games with 18 starts
- Is ranked in the top-10 in the ACC in assists and assists per game
- Was the only freshman to rank in the top-10 in the conference in assists and assists per game
- Finished the regular season tied for second on the team with 20 points (five goals, 10 assists)
- Logged her first career assist in her second game (Sept. 1 against No. 6 Penn State)
- Scored her first collegiate goal against Richmond (Sept. 11), the first of three-straight games in which she scored a goal
- Registered the game-winning goal at No. 15 Wake Forest

### High School

- Played for the Hockey England U16 team (2008-10) U18 (2010-12) and U21 (2013)
- Played with the Great Britain U-21 training squad in December 2012
- Earned a spot on the final U21 roster, competing at the Junior World Cup in Germany July 27-Aug. 4
- Won a bronze medal at the 2011 European Championship in Holland with the Hockey England U18 team
- Awarded the Junior Hockey Player of the Year
- Also played tennis at Kent College and netball at Q.E. Grammar

### Personal

- Daughter of Mark and Catherine Hyams
- Has two sisters, Hannah and Sarah
- Undeclared major

### HYAM'S CAREER STATISTICS

Year	GP/GS	Shots	Goals	Assists	Points	DS
2013	21/02	35	5	11	21	0

## #1 JENNY JOHNSTONE

**SENIOR • 5-6 • GOALKEEPER**  
**PAISLEY, SCOTLAND**  
**THE HIGH SCHOOL OF GLASGOW**



### 2014

- Enters the season with 258 career saves, ranking tenth in the Virginia record book

### 2013

- All-ACC Academic Team
- Preseason All-ACC
- Started in all 19 games, playing all but four minutes of the season in goal

- Led the ACC with six regular-season shut outs
- Logged a season-high 13 saves in the victory over Penn State (Sept. 1)
- Had nine saves in the double-overtime game against Richmond, prevailing in the shoot out
- Put up career-best totals saves (89) and save percentage (.730) and goals-against average (1.53)

### 2012

- Longstreth/NFHCA Division I All-South Region first team
- All-ACC goalkeeper
- All-VaSID first team
- 2012 Gladiator by SGI/NFHCA National Academic Squad
- 2012 All-Atlantic Coast Conference Academic Field Hockey Team
- Led the ACC in save percentage most of the season
- Ranked among the nation's top goalkeepers in goals-against average and save percentage most of the season
- Finished the year with a 1.9 GAA (34th in the NCAA) and 72.0 save percentage (42nd)
- 13-5 record with two shutouts and taking part in three more team combined shutouts
- Allowed 33 goals with 85 saves
- Earned her first shutout of the season in the 2-0 victory over Boston University (Sept. 21)
- Logged five saves in the 2-1 double overtime victory at No. 20 Michigan State (Sept. 7)
- Had six saves in the 3-2 win against No. 4 Maryland (Sept. 28)
- Had a season-high 11 saves at North Carolina (Oct. 13)
- Logged nine saves in both games against Princeton (Oct. 28 and Nov. 11)
- Played all 70 minutes in the NCAA Tournament win over Iowa, logging three saves and allowing two goals
- Preseason All-ACC selection

### 2011

- Played in all 20 games with 18 starts
- Ended the year with a 7-12-0 record
- Finished the year with 84 saves and a .618 save %
- Also tallied a 3.78 goals against average mark
- Recorded first career shutout at James Madison (Sept. 7)
- Tallied career-best 14 saves vs. Duke (Oct. 29) en route to winning ACC Player of the Week honors
- Had seven saves vs. Penn State (Aug. 28) and at Maryland (Sept. 30)

### International/National

- 33 international caps while representing Scotland
- Trained with the U-21 Scotland National Team
- Represented U-16, U-17 and U-18 Scotland squads

### Personal

- Daughter of Chris and Anne Johnstone
- Has three siblings, Alasdair, Matthew, and Kirsty
- Environmental Science major, History minor

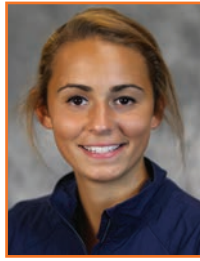
### JOHNSTONE'S CAREER STATISTICS

Year	GP/GS	Min	Saves	GA	Save %	GAA	SO
2011	20/18	1237:51	84	52	.618	3.78	1
2012	20/17	1214:28	85	33	.720	1.90	2
2013	21/21	1511:38	89	33	.730	1.53	6
Totals	61/56	3963:57	258	118	.686	2.08	9



## #2 KATIE KELLY

**SOPHOMORE • 5-7 • MIDFIELD  
PHOENIXVILLE, PA.  
ARCHBISHOP CARROLL**



### 2013

- Played in 11 games
- Made her collegiate debut on August 30 against Louisville
- Scored the first goal of her collegiate career against Radford (Oct. 1)

### High School

- Two-time first team All-State (Pennsylvania), 2011-12
- 2012 first team All-Southeastern Pennsylvania
- 2012 Academic All-State
- Three-time first team All-Catholic (2010-12)
- Two-time first team All-Main Line and first team All-Delaware County (2011-12)
- 2011-13 Futures Elite, including playing in the 2012 Futures Elite Championship
- 2011 Junior National Indoor Team
- 2011 AAU Junior Olympics
- Toured China in 2012, playing in the Chinese National Youth Hockey U19 Championships, finishing second
- Also played lacrosse (midfield) at ACHS
- Member of the National Honor Society

### Personal

- Daughter of Joe & Gina Kelly
- Has a twin sister, Megan, who also plays on the Cavalier field hockey team
- High school teammate of Cavalier Becca Zamojcin
- Undeclared major

### K KELLY'S CAREER STATISTICS

Year	GP/GS	Shots	Goals	Assists	Points	DS
2013	11/0	3	1	0	2	0

## #22 MEGAN KELLY

**SOPHOMORE • 5-7 • MIDFIELD/BACK  
PHOENIXVILLE, PA.  
ARCHBISHOP CARROLL**



### 2013

- Appeared in two games
- Made her collegiate debut at Yale (Sept. 6)

### High School

- 2012 first team All-State (Pennsylvania)
- 2011 second team All-State
- All-Delaware County (first team in 2012, second team in 2011)
- Two time All-Catholic first team and a 2010 second team All-Catholic selection
- 2011-13 Futures Elite, including playing in the 2012 Futures Elite Championship, and 2011 AAU Junior Olympics
- Toured China in 2012, playing in the Chinese National Youth Hockey U19 Championships, finishing second
- Also played lacrosse (midfield) at ACHS

### Personal

- Daughter of Joe & Gina Kelly
- Has a twin sister, Katie, who also plays on the Cavalier field hockey team
- Undeclared major

### M KELLY'S CAREER STATISTICS

Year	GP/GS	Shots	Goals	Assists	Points	DS
2013	3/0	0	0	0	0	0

## #13 KELSEY LEBLANC

**SENIOR • 5-1 • BACK/MIDFIELD  
HAVERFORD, PA.  
HAVERFORD HIGH SCHOOL**



### 2013

- All-ACC Academic Team
- Started all 21 games
- Scored her first goal of the season at Vermont (Sept. 15), also logging an assist in the game
- Scored goals in three-straight games at Albany (Oct. 6), against Boston College (Oct. 11) and William & Mary (Oct. 13)
- Was one of the penalty corner injectors for the Cavaliers

### 2012

- Started the first four games of the season before being sidelined with a leg injury
- Returned to the field against Wake Forest (Oct. 20)
- Played in 10 games with seven starts, including starting all three post-season contests

### 2011

- Played in 19 games with 5 starts
- Recorded first collegiate goal at Northwestern (Sept. 18)
- Also scored vs. Boston College (Sept. 23)

### High School

- 2010 first team all-state; 2009 second team all-state
- Three-time Central League, Main Line and Delaware County first team
- Led Haverford in scoring for two seasons, including 20 goals and 17 assists as a senior
- Named the team's most valuable player
- Played with WC Eagles Hockey Club
- Selected as an Academic All-American
- Also competed in lacrosse

### Personal

- Daughter of Regan and Kathleen LeBlanc
- Has an older brother, Jordan, and a younger sister, Maya
- Mom, Kathleen, played field hockey at Temple
- Dad, Regan, played soccer at Eastern University
- Brother, Jordan, played soccer at Old Dominion
- Psychology major, Media Studies minor

### LEBLANC'S CAREER STATISTICS

Year	GP/GS	Shots	Goals	Assists	Points	DS
2011	19/5	10	2	0	4	0
2012	10/7	0	0	0	0	0
2013	21/21	8	4	3	11	3
Totals	29/12	10	2	0	4	3





## #24 CARRERA LUCAS

**FRESHMAN • 5-10 • GOALKEEPER  
BROOKLANDVILLE, MD.  
ST. PAUL'S SCHOOL FOR GIRLS**



### High School

- At St. Paul's School for Girls, averaged 14.8 saves per game (266 total saves), saving 82 percent of the shots she faced in her fourth varsity season.
- Three-time Interscholastic Athletic Association of Maryland A Conference All-Star
- 2011 team MVP and the 2013 team captain
- Baltimore Ravens Athlete of the Week on Dec. 23, 2012
- Was also a lacrosse goalie, being named a 2013 Towson Times Second-Team All-Star and serving as the 2014 team's captain
- Also earned three varsity letters in squash

### Personal

- Daughter of Carol and Dale Lucas
- Has two older brothers, Tyler and Garrett
- Her father, Dale, was a member of the US Bobsled Team from 1976-81
- Her father runs a competitive BBQ team with the family often traveling around the country with him to competitions
- Has lived her whole life on a horse farm that specializes in breeding and training thoroughbreds
- Undeclared major

## #3 JESS ORRETT

**SENIOR • 5-4 • MIDFIELDER  
WELLA, SOMERSET, ENGLAND  
MILLIFIELD SCHOOL**



### 2013

- Co-captain with Elly Buckley
- Appeared in 19 games with 18 starts
- Logged an assist against Penn State (Sept. 1)
- Scored the game-winning goal in the neutral-site game against Maine (Sept. 14), her only goal of the regular-season

### 2012

- Appeared in all 22 games with 16 starts
- Scored her lone goal of the season vs. New Hampshire (Oct. 7)
- Logged assists in back-to-back games against Saint Joseph's (Sept. 30) and Yale (Oct. 6)
- Had an assist in the NCAA Tournament second round game against Princeton
- Took a season-high three shots in the season opener at Temple
- Also had an assist against Penn State (Aug. 26) and Towson (Sept. 2)

### 2011

- Started all 20 games as a freshman
- Tallied four goals and four assists for 12 points
- Took 27 shots
- Recorded first career goal and assist in first collegiate game vs. VCU
- Also scored against Towson (Sept. 2), Maryland (Sept. 30) and William & Mary (Oct. 17)

### International/National

- Member of the English U-16 and U-18 national teams

### High School

- First team English National League selection
- Led squad to national finalist finishes in both indoor and outdoor leagues
- Served as team captain

### Personal

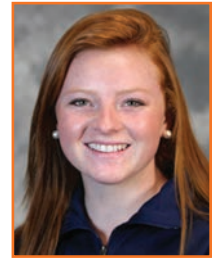
- Daughter of Deborah and Robert Orrett
- Has two sisters, Rachel and Libby
- Her whole family played field hockey at the University level. Her parents played at Reading, her sister, Rachel, played for Birmingham and her sister, Libby, played at Leeds
- Psychology major

### ORRETT'S CAREER STATISTICS

Year	GP/GS	Shots	Goals	Assists	Points	DS
2011	20/20	27	4	4	12	0
2012	22/16	7	1	5	7	0
2013	21/20	17	1	1	3	0
<b>Totals</b>	<b>63/56</b>	<b>51</b>	<b>6</b>	<b>10</b>	<b>22</b>	<b>0</b>

## #9 MACY PEEBLES

**SOPHOMORE • 5-4 • MIDFIELD  
YORKTOWN, VA.  
TABB HIGH SCHOOL**



### 2013

- Appeared in 16 games with three starts
- Made her collegiate debut on Aug. 30 against Louisville, taking one shot on goal
- Logged an assist in her second collegiate game against No. 6 Penn State
- Made her first collegiate start against Radford (Oct. 1)
- Took six shots, four on goal, during the regular season

### High School

- In her four years at Tabb High School, won three state championships and had one runner-up finish
- 2012 State Player of the Year (Virginia)
- 2012 Harrow Sports/NFHCA High School second team All-American
- 2012 Harrow Sports/NFHCA HS All-South Region
- Three-time first team All-State honoree (2010-12)
- 2012 Daily Press Player of the Year
- 2008-10 Futures Elite
- Also played club soccer for 10 years and was a cheerleader for two years



### Personal

- Mother, Karen Fallon, played tennis at the Naval Academy
- Father, Butch Peebles, played football at Gardner Webb
- Grandfather, Kenneth Peebles, played football and wrestled at UVa
- Grandfather, Michael Fallon, competed in hurling and Gaelic football at the University of Ireland, Galway
- Is the youngest of four sisters: Kathryn, Mallory and Shannon
- Undeclared major

### PEEBLE'S CAREER STATISTICS

Year	GP/GS	Shots	Goals	Assists	Points	DS
2013	22/6	12	1	1	3	0

## #19 LIZ STERN-GREEN

**FRESHMAN • 5-5 • STRIKER  
HUMMELSTOWN, PA.  
MERCERSBURG ACADEMY**



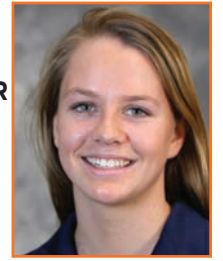
### High School

- Played two years at Hershey High, winning a District AAA championship her freshman year
- Finished her final two years of high school at Mercersburg Academy in Mercersburg, Pa., where she was a two-time Academic All-Mid Atlantic Prep League honoree
- 2012 and 2013 Mid-Atlantic Prep League All-Academic
- Her 2012 club team was ranked fourth nationally and finished fourth at the US Field Hockey U19 National Club Championship
- Also won two varsity letters in soccer, two in lacrosse and one in indoor track

### Personal

- Daughter of Richard Green and Pamela Stern-Green
- Father, Richard, played football for four years at Boston College
- Has an older brother, Nathan
- Was one of just 13 students at Mercersburg Academy to be a first tier selection Cum Laude Society, the highest academic distinction at the school
- Four times earned Distinguished Honors with a 4.0 GPA
- Traveled to Haiti in 2010 to assist earthquake victims, working in an orphanage as well as helping build a house for a widow and her children who had lost their home in the quake
- Also assisted in residential clean-up in Hershey, Pa. after a major-flooding event devastated the town
- Was selected to participate in a biology trip to Costa Rica in 2013
- Organized a Hunger Banquet at Mercersburg Academy to raise awareness about world hunger
- Undelcared major

## #10 EMILIA TAPSALL



**SOPHOMORE • 5-5 • MIDFIELD/STRIKER  
OLD GREENWICH, CONN.  
GREENWICH ACADEMY**

### 2013

- Played in 18 regular-season games with four starts
- Made her collegiate debut on Aug. 30 vs. Louisville
- Made her first collegiate start on Sept. 11 against Richmond
- In the regular season, took nine shots, four on goal

### High School

- 2012 Harrow Sports/NFHCA High School first team All-American
- 2012 Harrow Sports/NFHCA High School All-South Region
- 2011 second team All-American
- Helped lead her 2012 Greenwich Academy team to a New England Private School championship, winning All-Tournament honors
- 2010-11 NEPSAC finalist and NEPSAC All-Tournament team
- Member of the Futures Elite team
- Also a four-year varsity starter for the Greenwich Academy lacrosse team

### Personal

- Mother, Catherine Tapsall, played three years of lacrosse and four years of soccer at Harvard, earning All-American honors in the latter
- Father, Ian Tapsall, played field hockey for South Gate (1975-80) and was a U21 England trialist
- Uncle, Manzar Iqbal, was the captain of the USA Men's Field Hockey team in the 1984 Summer Olympics
- Has two older sisters, Brittany and Olivia, and a younger sister, Faye
- Undeclared major

### TAPSALL'S CAREER STATISTICS

Year	GP/GS	Shots	Goals	Assists	Points	DS
2013	20/4	9	0	0	0	0





## #21 RILEY TATA

**SOPHOMORE • 5-7 • STRIKER**  
**VIRGINIA BEACH, VA.**  
**NORFOLK ACADEMY**



### 2013

- Played in 18 games with six starts
- Finished the regular-season tied for second on the team with 20 points
- Finished the regular-season ranked second on the team with 10 goals
- Began her collegiate career scoring three goals on her first three shots (over a three-game span)
- Scored the first goal of the season for the Cavaliers, netting a score 1:51 into the season-opener against Louisville (Aug. 30)
- Had two multi-goal games, scoring twice at Vermont (Sept. 15) and against James Madison
- Scored the game-winning goals at Albany (Oct. 6) and against Duke (Oct. 18)

### High School

- Four-sport athlete at Norfolk Academy, playing field hockey, basketball, soccer, and lacrosse
- 2012 Harrow Sports/NFHCA High School All-South Region
- Two-time first team All-State and two-time first team All-Tidewater
- 2012 TCIS Player of the Year and Team MVP
- Led Norfolk Academy to the state tournament three times, advancing to the finals in 2010 and 2011
- All-time single season and career record holder at Norfolk Academy with 119 goals, 37 assists, and 275 points
- Three-time TCIS leading scorer (65 points- 2010; 95 points- 2011; 97 points- 2012)
- Member of the 2009 Commonwealth Games U-16 champion team

### Personal

- Daughter of Bob and Anne Ferrell Tata
- Has two older sisters, Peyton and Carter, and a younger brother, Robert
- Her grandfather, Bob Tata, played football and baseball at Virginia, being named All-Virginia Big Six in both sports. He was also a collegiate batting champion and played in the North-South Shrine All-Star Game
- Her father, Bob, played football at the Naval Academy, setting 17 Navy records as a kicker
- Undeclared major

### TATA'S CAREER STATISTICS

Year	GP/GS	Shots	Goals	Assists	Points	DS
2013	20/6	32	6	11	22	0

## #12 RACHAEL ULSH

**FRESHMAN • 5-7 • BACK**  
**CENTREVILLE, VA.**  
**WESTFIELD HIGH SCHOOL**



### HIGH SCHOOL

- Helped Westfield High in Centreville, Va., win its first-ever Virginia state title and become the first Virginia public high school to be ranked No. 1 in the year-end Washington Post rankings
- 2013 Virginia 6A North Region Player of the Year
- 2013 Concorde District/Conference Player of the Year
- Three-time first team all-state, All-North Region and All-Concorde District honoree (2011, 2012, 2013)
- Two-time Second Team All-Met (2011, 2012) selection
- Her WHS squad went 80-10 in her four varsity seasons and recorded 41 shutouts with her playing on the back line
- Also played four seasons of lacrosse
- 2013 USA Lacrosse Academic All-American

### PERSONAL

- Daughter of Patty and Eric Ulsh
- Has two older sisters, Catherine and Diana, and a younger brother, Liam
- Cum Laude Honor Student/Scholar Athlete Awards (2010-14)
- Participated in National Indoor Tournament
- Undeclared major

## #15 EMILIE VAN ZINNICQ BERGMANN

**FRESHMAN • 5-5 • FORWARD/MIDFIELD**  
**DORDRECHT, THE NETHERLANDS**  
**STEDELIJK DALTON LYCEUM**



### High School/Club Teams

- Had an extremely successful career playing club hockey in The Netherlands, moving up to senior level (18+) at the age of 15.
- In 2012-13, was the top goal scorer for HV Victoria Rotterdam, helping her squad finish in first place in the top league and second place in the national tournament
- Currently playing both field and indoor hockey for HC Leonidas Rotterdam, and is the top goal scorer in both leagues
- Was a decorated skier, finishing first in 2004 and second in 2003 in the slalom in the national championships before choosing to focus on hockey

### Personal

- Daughter of Ellen Akkerman and Frans van Zinnicq Bergmann
- Older sister, Leonore, was also a skier who competed at the national championships in the slalom, finishing first in 2002 and second in 2001 and 2002
- Father, Frans, was a member of The Netherlands' speed skating national team (1978-79)
- Loves to sing and play the piano
- Still enjoys recreational skiing
- Undeclared major



## #8 TARA VITTESE

**FRESHMAN • 5-10 • MIDFIELD**  
**CHERRY HILL, N.J.**  
**CAMDEN CATHOLIC HIGH SCHOOL**



### 2014

- Became the first ever Virginia freshman to be named to the Preseason All-ACC team

### National/International

- Despite being the youngest player on the team, was the top scorer for the US U-21 Junior National Team at the 2013 Junior World Cup, held in Monchengladbach, Germany
- Her four goals at the 2013 Junior World Cup tied for seventh among all players in the tournament which is regarded as the top international event for elite field hockey athletes under the age of 21
- Also played on the US U-21 team in 2012, traveling to Manchester, England for a friendly versus English U21 teams
- 2011-14 U-19 National Squad
- As a member of the 2013 U-19 National Team, traveled to Amsterdam for a tour
- 2011 U-17 National Team
- Played in U-16 tournament in the Netherlands in 2011, winning the shootout tournament at the event
- 2013-14 Women's National Championship, playing for the U21 squad

### High School

- Finished her prep career with 166 goals, a Camden Catholic record as well as No. 6 all time in the nation for high school career goal scoring.
- Two-time high school All-American
- Three-time all-state
- Four-time first-team All-Conference honoree

### Personal

- Daughter of Mark and Patricia Vittese
- Sisters Michelle ('12) and Carissa ('13) both played field hockey at Virginia with Michelle earning All-America honors three times
- Sister Michelle is a current member of the US National Team and competed for the United States at the 2010 London Olympics
- Undeclared major

## #20 BECCA ZAMOJCIN

**FRESHMAN • 5-5 • BACK**  
**PHOENIXVILLE, PA.**  
**ARCHBISHOP CARROLL HIGH SCHOOL**



### High School

- Two-time first-team All-Catholic
- Two-time All-Delco
- Helped her Carroll HS squad to a district championship and a berth in the state playoffs all four years
- As a member of the USA U-19 Junior National Indoor Team, was selected to the travel squad that played on a 2011 tour in Scotland.
- Toured China in 2012 with her WC Eagles club team

### Personal

- Daughter of Ann Zamojcin and Thomas Zamojcin
- Mother, Ann, was a track and cross country runner at Northwestern
- Her father, Thomas, was a contestant on the TV show Jeopardy!
- Has an older sister, Kim, and an older brother, Dan
- Has coached a U-10 field hockey team
- Was the top-ranked student in her graduating class of 223, earning Archbishop Carroll Class Awards for Math, Literature, Spanish, World History, Theology, AP Language and Accounting
- Undeclared major





# 2013 STATISTICS AND RESULTS



## 2013 VIRGINIA BOX SCORE

Overall: 15-6 ACC: 3-3 Home: 8-2 Away: 6-2 Neut: 1-2

#	Name	GP-GS	G	A	Pts	Sh	Shot%	SOG	SOG%	GW	PS-ATT	DSV
18	Elly Buckley	21	20	9	49	140	.143	88	.629	4	0-0	6
5	Caleigh Foust	21	12	0	24	50	.240	33	.660	3	0-0	0
21	Riley Tata	20	11	0	22	32	.344	24	.750	2	0-0	0
11	Lucy Hyams	21	5	11	21	35	.143	22	.629	1	0-0	0
13	Kelsey LeBlanc	21	4	3	11	8	.500	7	.875	2	0-0	3
17	Hadley Bell	20	3	2	8	38	.079	22	.579	0	0-0	0
19	Chloe Pendlebury	20	0	8	8	14	.000	8	.571	0	0-0	1
8	Carissa Vitese	21	1	5	7	21	.048	11	.524	1	1-2	0
3	Jess Orrett	21	1	1	3	17	.059	9	.529	1	0-0	0
7	Taylor Brown	17	1	1	3	4	.250	2	.500	0	0-0	0
2	Katie Kelly	11	1	0	2	3	.333	2	.667	1	0-0	0
24	Katie Robinson	21	1	0	2	1	1.000	1	1.000	0	0-0	1
9	Macy Peebles	18	0	1	1	8	.000	6	.750	0	0-0	0
16	Lane Smith	10	0	1	1	0	.000	0	.000	0	0-0	0
10	Emilia Tapsall	20	0	0	0	9	.000	4	.444	0	0-0	0
4	Maddie DeCerbo	18	0	0	0	2	.000	2	1.000	0	0-0	0
23	Jeannie Blackwood	20	0	0	0	0	.000	0	.000	0	0-0	3
22	Megan Kelly	3	0	0	0	0	.000	0	.000	0	0-0	0
20	Sarah Weber	5	0	0	0	0	.000	0	.000	0	0-0	0
14	Emily Faught	12	0	0	0	0	.000	0	.000	0	0-0	0
12	Elizabeth Hanks	6	0	0	0	0	.000	0	.000	0	0-0	0
6	Tollie Bell	3	0	0	0	0	.000	0	.000	0	0-0	0
1	Jenny Johnstone	21	0	0	0	0	.000	0	.000	0	0-0	0
	<b>Total</b>	21	61	42	164	382	.160	242	.634	15	1-2	14
	<b>Opponents</b>	21	33	25	91	222	.149	136	.613	6	3-4	12

##	Name	GP-GS	Minutes	GA	Avg	Saves	Pct	W	L	T	Sho
1	Jenny Johnstone	21	1511:38	33	1.53	89	.730	15	6	0	6/0
	<b>Total</b>	21	1519:16	33	1.52	103	.757	15	6	0	6
	<b>Opponents</b>	21	1519:16	61	2.81	180	.747	6	15	0	0

TEAM STATISTICS	VA	OPP
Goals-Shot attempts	61-382	33-222
Goals scored per game	2.90	1.57
Shot pct.	.160	.149
Shots on goal-Attempts	242-382	136-222
SOG pct.	.634	.613
Shots/Game	18.2	10.6
Assists	42	25
Penalty Corners	154	96
Penalty Strokes	1-2	3-4
Green cards	24	21
Yellow cards	9	7
Red cards	0	0

ATTENDANCE	VA	OPP
Total	2765	2932
Dates/Avg Per Date	10/276	8/366

GOALS BY PERIOD	1	2	OT	2OT	Total
Virginia	30	30	0	2	62
Opponents	14	18	1	0	33

SHOTS BY PERIOD	1	2	OT	2OT	Total
Virginia	187	178	12	5	382
Opponents	101	113	7	1	222

SAVES BY PERIOD	1	2	OT	2OT	Total
Virginia	51	50	2	0	103
Opponents	89	84	7	0	180

CORNERS BY PERIOD	1	2	OT	2OT	Total
Virginia	68	75	7	4	154
Opponents	43	53	0	0	96

TEAM HIGHS	Goals:	Assists:	Points:	Shots:	Shots/Goal:	Saves:	Corners:
7	at Vermont (Sept. 15)						
6	vs James Madison (Sept. 25)						
6	at Yale (Sept. 6)						
18	vs James Madison (Sept. 15)						
18	at Vermont (Sept. 15)						
18	at Yale (Sept. 6)						
42	at Vermont (Sept. 15)						
25	at Vermont (Sept. 15)						
13	vs Penn State (Sept. 1)						
15	vs Richmond (Sept. 11)						

INDIVIDUAL HIGHS	Goals:	Assists:	Points:	Shots:	Saves:
3	Buckley vs Duke (Oct. 18)				
3	Foust at Old Dominion (Sept. 8)				
3	Foust at Yale (Sept. 6)				
3	Hyams vs Duke (Oct. 18)				
3	Hyams vs JMU (Sept. 25)				
6	Buckley vs Duke (Oct. 18)				
6	Buckley at Vermont (Sept. 15)				
6	Foust at Old Dominion (Sept. 8)				
6	Foust at Yale (Sept. 6)				
16	Buckley at Vermont (Sept. 15)				
13	Johnstone vs Penn State (Sept. 1)				

## 2013 VIRGINIA RESULTS

Date	Opponent	Result	Attendance
Aug 30	LOUISVILLE	W, 3-2	215
Sep 01	#6 PENN STATE	W, 4-2	246
Sep 06	at Yale Bulldogs	W, 6-1	209
Sep 08	at #8 Old Dominion	W, 5-3	418
Sep 11	RICHMOND	W2OT, 2-1	471
Sep 14	vs Maine	W, 2-0	62
Sep 15	at Vermont	W, 7-0	140
Sep 20	#1 NORTH CAROLINA*	L, 1-2	579
Sep 22	#13 NORTHWESTERN	W, 2-1	271
Sep 25	JAMES MADISON	W, 6-1	136
Sep 27	at #15 Wake Forest*	W, 3-0	242
Sep 29	at LIBERTY	W, 2-0	455
Oct 01	RADFORD	W, 5-0	112
Oct 05	at #5 Syracuse*	L, 1-4	354
Oct 06	at #12 UAlbany	W, 2-1	379
Oct 11	#6 BOSTON COLLEGE*	W2OT, 1-0	158
Oct 13	WILLIAM & MARY	L, 1-2	232
Oct 18	#8 DUKE*	W, 4-3	345
Oct 25	at #1 Maryland*	L, 1-4	735
Nov 07	vs #8 Duke	L 1-2	0
Nov 16	vs #10 UMass	LOT, 3-4	388

\*ACC game

# ACC Tournament - Newton, Mass.

\$ NCAA Tournament - Durham, N.C.



## POINTS

### CAREER

1.	238	Paige Selenski	2008-10, 12
2.	230	Meridith Thorpe	1995-1998
3.	182	Elly Buckley	2010-2013
4.	173	Cindy Carzo	1976-1979
5.	160	Michelle Vizzuso	1995-1998
6.	157	Meredith Elwell	1996-1999
7.	154	Jackie Campbell	1979-1982
8.	133	Jessica Coleman	1998-2001
9.	128	Traci Ragukas	2006-2009
10.	105	Cheryl Gleason	1981-1984

### SEASON

1.	76	Cindy Carzo	1978
2.	70	Meridith Thorpe	1996
3.	67	Paige Selenski	2012
4.	62	Paige Selenski	2010
	62	Paige Selenski	2009
6.	61	Meridith Thorpe	1997
7.	54	Jessica Coleman	1999
8.	53	Michelle Vizzuso	1998
9.	52	Meridith Thorpe	1995
	52	Lindsey Sheehan	1985

### FRESHMAN

1.	52	Meridith Thorpe	1995
2.	49	Elly Buckley	2010
3.	47	Paige Selenski	2008
4.	45	Meredith Elwell	1996
	45	Jackie Campbell	1979
6.	40	Cindy Carzo	1976
7.	35	Traci Ragukas	2006
8.	31	Lorraine Vizzuso	1997
9.	28	Su Cox	1976
10.	26	Michelle Vizzuso	1995

### SOPHOMORE

1.	70	Meridith Thorpe	1996
2.	62	Paige Selenski	2009
3.	54	Jessica Coleman	1999
4.	43	Elly Buckley	2011
5.	39	Meredith Elwell	1997
6.	36	Michelle Vizzuso	1996
	36	Cindy Carzo	1977
	36	Rachel Sumfest	2012
9.	35	Jackie Campbell	1980
	35	Mia Link	2004

### JUNIOR

1.	76	Cindy Carzo	1978
2.	62	Paige Selenski	2010
3.	61	Meridith Thorpe	1997
4.	45	Michelle Vizzuso	1997
5.	43	Meredith Elwell	1998
7.	42	Jackie Campbell	1981
8.	41	Elly Buckley	2012
9.	38	Traci Ragukas	2008
10.	35	Cheryl Gleason	1983
	35	Jessica Coleman	2000

### SENIOR

1.	67	Paige Selenski	2012
2.	53	Michelle Vizzuso	1998
3.	52	Lindsey Sheehan	1985
4.	49	Elly Buckley	2013
5.	47	Meridith Thorpe	1998
6.	42	Jessica Coleman	2001
7.	38	Heather Hale	1996
8.	37	Kristen Aceto	1989
9.	37	Mary Henry	1982
10.	32	Jackie Campbell	1982

## GOALS

### CAREER

1.	101	Meridith Thorpe	1995-1998
2.	100	Paige Selenski	2008-10, 12
3.	84	Cindy Carzo	1976-1979
4.	73	Elly Buckley	2010-2013
5.	69	Jackie Campbell	1979-1982
6.	65	Meredith Elwell	1994-1999
7.	58	Jessica Coleman	1998-2001
8.	54	Traci Ragukas	2006-2009
9.	50	Michelle Vizzuso	1995-1998
10.	42	Cheryl Gleason	1981-1984

### SEASON

1.	37	Cindy Carzo	1978
2.	32	Meridith Thorpe	1996
3.	27	Paige Selenski	2012
	27	Paige Selenski	2010
	27	Paige Selenski	2009
6.	26	Meridith Thorpe	1997
7.	24	Meridith Thorpe	1995
	24	Lindsey Sheehan	1985
9.	22	Jackie Campbell	1979
	22	Jessica Coleman	1999

### FRESHMAN

1.	24	Meridith Thorpe	1995
2.	22	Jackie Campbell	1979
3.	20	Meredith Elwell	1996
	20	Cindy Carzo	1976
5.	19	Elly Buckley	2010
	19	Paige Selenski	2008
7.	15	Traci Ragukas	2006
8.	14	Su Cox	1976
9.	12	Lorraine Vizzuso	1997
	12	<b>Caleigh Foust</b>	<b>2013</b>

### SOPHOMORE

1.	32	Meridith Thorpe	1996
2.	27	Paige Selenski	2009
3.	22	Jessica Coleman	1999
4.	18	Cindy Carzo	1977
5.	17	Elly Buckley	2011
6.	16	Jackie Campbell	1980
	16	Rachel Sumfest	2012
7.	15	Mia Link	2004
8.	14	Meredith Elwell	1997
	14	Inge Kaars Sijpesteijn	2006
10.	13	Traci Ragukas	2007
	13	Michelle Vizzuso	1996

### JUNIOR

1.	37	Cindy Carzo	1978
2.	27	Paige Selenski	2010
3.	26	Meridith Thorpe	1997
4.	18	Meredith Elwell	1998
	18	Jackie Campbell	1981
6.	16	Traci Ragukas	2008
	16	Cheryl Gleason	1983
8.	15	Jessica Coleman	2000
9.	14	Nicole McNichol	1992
	14	Mary Henry	1981
	14	Katie Phillips	2004

### SENIOR

1.	27	Paige Selenski	2012
2.	24	Lindsey Sheehan	1985
3.	20	Elly Buckley	2013
	20	Jessica Coleman	2001
5.	19	Meridith Thorpe	1998
6.	16	Mary Henry	1982
7.	15	Kristen Aceto	1989
8.	14	Michelle Vizzuso	1998
9.	13	Meredith Elwell	1999
	13	Jackie Campbell	1982

## ASSISTS

### CAREER

1.	60	Michelle Vizzuso	1995-1998
2.	52	Carrie Goodloe	1998-2001
3.	44	Laura Lindsay	1996-1999
4.	38	Heidi Waterman	1991-1994
	38	Paige Selenski	2008-10, 12
6.	37	Heather Hale	1993-1996
7.	36	Elly Buckley	2010-13
8.	34	Nicole McMaster	1993-1996
9.	28	Natalie Wheattall	1982-1985
	28	Meridith Thorpe	1995-1998

### SEASON

1.	25	Michelle Vizzuso	1998
2.	21	Michelle Vizzuso	1997
3.	20	Heather Hale	1996
4.	19	Laura Lindsay	1997
	19	Carrie Goodloe	1999
6.	17	Nicole McMaster	1996
	17	Heather Hale	1995
8.	16	Heidi Waterman	1994
	16	Laura Lindsay	1999
10.	15	Nicole McMaster	1995
	15	Carrie Goodloe	2000

### FRESHMAN

1.	11	Elly Buckley	2010
	11	<b>Lucy Hyams</b>	<b>2013</b>
3.	10	Pien Hulsebosch	2008
4.	9	Paige Selenski	2008
5.	7	Lorraine Vizzuso	1997
6.	6	Michelle Vittese	2008
	6	Kristen Daddona	1991
8.	5	Traci Ragukas	2006
	5	Meredith Elwell	1996
	5	Kelly Daddona	1990
	5	Tracy Drummond	1984
	5	Cheryl Gleason	1981

### SOPHOMORE

1.	19	Laura Lindsay	1997
	19	Carrie Goodloe	1999
3.	13	Heidi Waterman	1992
	12	Inga Stöckel	2009
5.	11	Meredith Elwell	1997
	11	Sarah Miller	2003
7.	10	Michelle Vizzuso	1996
	10	Kristen Daddona	1992
	10	Jessica Coleman	1999
10.	9	Elly Buckley	2011
	9	Michelle Vittese	2009
	9	Melissa Hayes	1996
	9	Natalie Wheattall	1983

### JUNIOR

1.	21	Michelle Vizzuso	1997
2.	17	Heather Hale	1995
3.	15	Nicole McMaster	1995
	15	Carrie Goodloe	2000
5.	10	Beth McGee	1981
6.	9	Meridith Thorpe	1997
	9	Katie Jo Gerfen	2003
	9	Abby Taylor	2006
9.	8	Paige Selenski	2010
	8	Heidi Waterman	1993

### SENIOR

1.	25	Michelle Vizzuso	1998
2.	20	Heather Hale	1996
3.	17	Nicole McMaster	1996
4.	16	Heidi Waterman	1994
	16	Laura Lindsay	1999
6.	14	Carrie Goodloe	2001
7.	13	Lesley Groff	1988
	13	Michelle Vizzuso	1997
	13	Paige Selenski	2012





## POINTS- SINGLE GAME

1.	14	Cindy Carzo	1976 vs. Goucher
2.	10	Paige Selenski	2012 vs. Towson
	10	Elly Buckley	2010 vs. Radford
	10	Mia Link	2004 vs. Bucknell
	10	Su Cox	1975 vs. Sweet Briar
3.	9	Jessie Coleman	1999 vs. App. St.
4.	8	10 times; most recently: Elly Buckley	2012 vs. Towson

## GOALS- SINGLE GAME

1.	7	Cindy Carzo	1976 vs. Goucher
2.	5	Su Cox	1975 vs. Sweet Briar
3.	4	Paige Selenski	2012 vs. Towson
4.	4	Elly Buckley	2012 vs. Towson
4.	4	Elly Buckley	2010 vs. Radford
4.	4	Paige Selenski	2010 vs. Old Dominion
4.	4	Mia Link	2004 vs. Bucknell
4.	4	Jessie Coleman	1999 vs. App. St.
4.	4	Meridith Thorpe	1997 vs. Davidson
4.	4	Meridith Thorpe	1996 vs. JMU
4.	4	Lindsey Sheehan	1985 vs. Davis&Elkins
4.	4	Cheryl Gleason	1983 vs. Delaware
4.	4	Mary Henry	1982 vs. Lynchburg
4.	4	Jackie Campbell	1981 vs. Richmond
4.	4	Kemp Passano	1978 vs. Goucher
4.	4	Amy Easter	1975 vs. RMWC

## ASSISTS- SINGLE GAME

1.	4	Michelle Vissuso	1997 vs. Davidson
2.	3	23 times; most recently: Biffy Cornelison	2006 vs. Radford

## HAT TRICKS - SEASON

1.	5	Meridith Thorpe	1996
2.	4	Meridith Thorpe	1997
3.	3	T.J. Whitehurst	1988
	3	Lindsey Sheehan	1985
	3	Jackie Campbell	1979
	3	Cindy Carzo	1978

## HAT TRICKS - CAREER

1.	12	Meridith Thorpe	1995-1998
2.	8	Cindy Carzo	1976-1979
3.	7	Jackie Campbell	1979-1982
	7	Paige Selenski	2008-10, 12
5.	4	Lindsey Sheehan	1984-1985
		Jessica Coleman	1998-2001

## CAREER GAMES

1.	90	Taylor Swezey	2007-2010
	90	Traci Ragukas	2006-2009
	90	Michelle Vizzuso	1995-1998
	90	Paige Selenski	2008-10, 12
5.	89	Haley Carpenter	2007-2010
	89	Meredith Elwell	1996-1999
	89	Meridith Thorpe	1995-1998
8.	88	Lori Mastropietro	1995-1998
	88	Peggy Boutilier	1994-1997

## GAME WINNING GOALS- SEASON

1.	13	Cindy Carzo	1978
2.	9	Meridith Thorpe	1996
3.	8	Paige Selenski	2009
	8	Cindy Carzo	1976
5.	7	Paige Selenski	2010
	7	Meridith Thorpe	1995
	7	T.J. Whitehurst	1987
	7	Cheryl Gleason	1983
	7	Cindy Carzo	1977
	7	Jessica Coleman	2000

## GAME WINNING GOALS- CAREER

1.	29	Cindy Carzo	1976-1979
2.	26	Meridith Thorpe	1995-1998
	26	Paige Selenski	2008-10, 12
4.	17	Jackie Campbell	1979-1982
5.	16	Jessica Coleman	1998-2001

## GAME WINNING GOALS- CLASSES

### FRESHMAN

1.	8	Cindy Carzo	1976
----	---	-------------	------

### SOPHOMORE

1.	9	Meridith Thorpe	1996
----	---	-----------------	------

### JUNIOR

1.	13	Cindy Carzo	1978
----	----	-------------	------

### SENIOR

1.	6	Michelle Vizzuso	1998
	6	Kristen Aceto	1989
	6	Jackie Campbell	1982

## SEASON GOALS AGAINST AVERAGE

1.	0.45	Mimi Beggs	1978
2.	0.58	Nancy Newman	1975
3.	0.70	Nancy Newman	1976
4.	0.83	Heather Dow	1981
5.	0.97	Kim Kastuk	2009
	0.97	Becky Worthington	1997

## CAREER GOALS AGAINST AVERAGE

1.	.78	Mimi Beggs	1977-1980
2.	.86	Nancy Newman	1973-1976
3.	1.27	Heather Christman	1988-1990
4.	1.28	Michelle Cusimano	1993-1996
5.	1.36	Amy Brockman	1982-1983

## SEASON SAVE PERCENTAGE

1.	.920	Mimi Beggs	1978
2.	.909	Donna DeNoble	1985
3.	.892	Donna DeNoble	1986
4.	.889	Heather Christman	1990
5.	.886	Heather Christman	1989

## CAREER SAVE PERCENTAGE

1.	.897	Heather Dow	1981
2.	.882	Heather Christman	1988-1990
3.	.879	Donna DeNoble	1984-1987
4.	.875	Missy Farwell	1983-1985
5.	.863	Mimi Beggs	1977-1980

## SAVES - SEASON

1.	267	Missy Farwell	1984
2.	239	Denise Wernersbach	1992
3.	215	Donna DeNoble	1986
4.	199	Michelle Cusimano	1994
5.	196	Donna DeNoble	1987
6.	193	Heather Christman	1990
7.	187	Heather Christman	1989
8.	184	Emily White	2002
9.	180	Missy Farwell	1985
10.	156	Denise Wernersbach	1991

## SAVES - CAREER

1.	521	Denise Wernersbach	1990-1993
2.	474	Michelle Cusimano	1993-1996
3.	457	Heather Christman	1987-1990
4.	449	Missy Farwell	1982-1985
5.	425	Donna DeNoble	1984-1987
6.	311	Becky Worthington	1997-2000
7.	301	Mimi Beggs	1977-1980
8.	289	Emily White	2000-2003
9.	263	Logan Carr	2002-2004
10.	258	Jenny Johnstone	2011-present

## SAVES - GAME

1.	40	Donna DeNoble	ODU	1986
2.	36	Missy Farwell	UNC	1984
3.	29	Heather Christman	ODU	1990
4.	25	Donna DeNoble	PSU	1987
	25	Donna DeNoble	ODU	1987
	25	Liz Nolley	UNC	1988
7.	23	Donna DeNoble	JMU	1986
8.	22	Denise Wernersbach	Duke	1992
	22	Donna DeNoble	JMU	1986
10.	21	Missy Farwell	ODU	1984
	21	Donna DeNoble	PSU	1981
	21	Denise Wernersbach	Rich.	1992



## SHUTOUTS - SEASON

1.	14	Mimi Beggs	1978
	14	Heather Dow	1981
3.	11	Denise Wernersbach	1990
	11	Mimi Beggs	1979

## SHUTOUTS - CAREER

### CAREER - GRASS

44	Mimi Beggs	1977-1980
----	------------	-----------

### CAREER - TURF

28	Denise Wernersbach	1990-1993
----	--------------------	-----------

### CONSECUTIVE - GRASS

8	Mimi Beggs	1978
---	------------	------

### CONSECUTIVE - TURF

5	Michelle Cusimano	1996
---	-------------------	------

## DEFENSIVE SAVES-SEASON

1.	25	Susan Crafts	1985
2.	13	Susan Crafts	1984
3.	10	Sandy Szilassy	1988
4.	7	Andy Begel	1987
	7	Sandy Szilassy	1988
	7	Barbara King	1994
7.	6	Elly Buckley	2013
8.	5	Elly Buckley	2012
	5	Natalie Wheatall	1984
	5	Bonnie Rosen	1991
	5	Julia Richardson	1999
	5	Erin Hayes	2006
	5	Lucy Meyers	2008

## DEFENSIVE SAVES-CAREER

1.	38	Susan Crafts	1982-1985
2.	19	Sandy Szilassy	1986-1989
3.	12	Erin Hayes	2003-2006
5.	11	Elly Buckley	2010-2013
6.	9	Julia Richardson	1997-2000
7.	8	Andy Begel	1985-1988
8.	7	Barbara King	1991-1994
	7	Bonnie Rosen	1988-1991
10.	6	Juli Bojanic	2001-2004
	6	Kelli Hill	1999-2002
	6	Biffy Cornelison	2002-2006

## CAVALIERS IN THE NCAA RECORD BOOK

### POINTS- GAME

T26.	10	Paige Selenski	2012 vs. Towson
	10	Elly Buckley	2010 vs. Radford
	10	Mia Link	2004 vs. Bucknell
	10	Su Cox	1975 vs. Sweet Briar

### SAVES - GAME

T6.	40	Donna DeNoble	1986 vs. Old Dominion
T13.	36	Missy Farwell	1984 vs. North Carolina

### POINTS - CAREER

T9.	238	Paige Selenski	2008-10, 12
T12.	230	Meredith Thorpe	1995-98

### POINTS PER GAME - CAREER

11.	2.64	Paige Selenski	2008-10, 12
12.	2.58	Meredith Thorpe	1995-98

### GOALS - CAREER

9.	101	Meredith Thorpe	1995-98
T10.	100	Paige Selenski	2008-10, 12

### GOALS PER GAME - CAREER

11.	1.13	Meredith Thorpe	1995-98
12.	1.11	Paige Selenski	2008-10, 12

### ASSISTS - CAREER

T26.	60	Michelle Vizzuso	1995-98
------	----	------------------	---------

### ASSISTS PER GAME - CAREER

T20.	0.68	Carrie Goodloe	1998-01
T24.	0.67	Michelle Vizzuso	1995-98

### SAVE PERCENTAGE - CAREER

T29.	.882	Heather Christman	1988-90
------	------	-------------------	---------

### GOALIE WINS - CAREER

T7.	60	Kim Kastuk^	2007-10
-----	----	-------------	---------

### GOALIE WINNING PERCENTAGE - CAREER

27.	.723	Kim Kastuk^	2007-10
-----	------	-------------	---------

### GOALIE MINUTES PLAYED - CAREER

15.	5,659	Kim Kastuk^	2007-10
-----	-------	-------------	---------

### TEAM POINTS - GAME

4.	36	vs. Towson	2012
----	----	------------	------

### TEAM GOALS - GAME

T8.	14	vs. Towson	2012
T13.	13	vs. Davidson	1996
T13.	13	vs. Davis & Elkins	1996

### TEAM POINTS - SEASON

15.	286		1996
-----	-----	--	------

### TEAM GOALS - SEASON

19.	100		1996
-----	-----	--	------

### TEAM ASSISTS - SEASON

10.	89		1997
-----	----	--	------

### SHUOUTS - SEASON

24.	12		2009
-----	----	--	------

### TEAM POINTS PER GAME - SEASON

15.	12.43		1996
-----	-------	--	------

### TEAM GOALS PER GAME - SEASON

20.	4.35		1996
-----	------	--	------

### TEAM ASSISTS PER GAME - SEASON

7.	4.05		1997
13.	3.74		1996

### COACHING WINS - ALL-TIME

25.	Michele Madison	312
-----	-----------------	-----

### COACHING WINS - ACTIVE COACHES

9.	Michele Madison	312
----	-----------------	-----

^ Career stats also include two seasons at Boston U.





## INTERNATIONAL COMPETITION (BY YEAR)

**Champions' Trophy, 1997**  
Meridith Thorpe

**World Cup, 1998**  
Lori Mastropietro  
Michelle Vizzuso

**Pan Am Games, 1999**  
Michelle Vizzuso

**Olympic Qualifier, 2000**  
Michelle Vizzuso

**Pan Am Games, 2003**  
Jessica Coleman

**Junior World Cup, 2005**  
Katherine Blair  
Mia Link

**Junior Pan Am Games, 2008**  
Tara Puffenberger  
Paige Selenski

**Junior World Cup, 2009**  
Tara Puffenberger  
Paige Selenski  
Michelle Vittese

**European Tour, 2010**  
Paige Selenski  
Michelle Vittese

**Four Nations Tournament, 2011**  
Paige Selenski  
Michelle Vittese

**European Tour, 2011**  
Rachel Jennings  
Tara Puffenberger

**Champions Challenge, 2011**  
Paige Selenski  
Michelle Vittese

**Pan American Games, 2011 (GOLD MEDAL)**  
Paige Selenski  
Michelle Vittese

**Olympic Games, 2012**  
Paige Selenski  
Michelle Vittese

**Junior World Cup, 2013**  
Tara Vittese  
Lucy Hyams

## SENIOR HIGH PERFORMANCE AND WOMENS NATIONAL CHAMPIONSHIPS (BY YEAR)

**1998**  
**Yellow**  
Lori Mastropietro  
Julia Richardson  
Ellen Wiese  
Missi Sanders, head coach

**White**  
Michelle Vizzuso  
Liz Lopez

**Blue**  
Meridith Elwell  
Becky Worthington

**Purple**  
Amy Broadwater

**Red**  
Laura Lindsay  
**Green - National Champions**  
Francis West

**1999**  
**Metro Rush**  
Katie Nicholson  
Jessica Coleman  
**Southern Charm**  
Leyf Pierce

**2000**  
**Metro Rush**  
Michelle Vizzuso  
Jessica Coleman  
**Tidewater Tempest**  
Emily White

**2001**  
**Philadelphia Fury**  
Katie Jo Gerfen  
Dana Anderson  
**New England Eclipse**  
Emily White

**2002**  
**Tidewater Tempest**  
Emily White

**2003**  
**Tidewater Tempest**  
Katherine Blair  
Logan Carr  
Biffy Cornelison  
Lindsey Selfridge  
**Philadelphia Fury**  
Dana Anderson  
Julianne Bojanic  
Sarah Miller  
Allison Flynn

**2004**  
**Philadelphia Fury**  
Logan Carr  
Dana Anderson  
Julianne Bojanic  
Aly Curmaci  
Allie Flynn  
Mia Link  
Lindsey Selfridge  
**Tidewater Tempest**  
Katie Jo Gerfen  
**USA Junior National Team**  
-Champions  
Katherine Blair

**2005**  
**USA Junior National Team -**  
Champions  
Katherine Blair  
Mia Link

**2006**  
**Maryland** - Champions  
Katherine Blair  
Mia Link

**2007**  
**Maryland**  
Mia Link  
Traci Ragukas  
**South**  
Kaitlyn Hiltz

**2008**  
**Pennsylvania**  
Paige Selenski  
**Maryland**  
Shelly Edmonds  
Kaitlyn Hiltz  
**New Jersey**  
Mia Link  
Michelle Vittese

**2009**  
**Mid-Atlantic**  
Rachel Jennings  
Mia Link  
Traci Ragukas  
Paige Selenski  
**New Jersey** - Champions  
Michelle Vittese  
**Pennsylvania**  
Tara Puffenberger

**2010**  
**Mid-Atlantic**  
Rachel Jennings  
Kim Kastuk  
Mia Link  
Tara Puffenberger  
Paige Selenski  
Michelle Vittese

**2011**  
**Mid-Atlantic**  
Hadley Bell  
Haley Carpenter  
Kim Kastuk  
Paige Selenski  
Michelle Vittese

**2012**  
**Mid-Atlantic**  
Kim Kastuk  
Paige Selenski  
Carissa Vittese  
Michelle Vittese  
**Pennsylvania**  
Rachel Sumfest

**2013**  
**Mid-Atlantic/South (Champions)**  
Paige Selenski  
Carissa Vittese  
Michelle Vittese  
**Pennsylvania**  
Rachel Sumfest

**2014**  
**Patriots Team**  
Carissa Vittese  
**U21 Team**  
Tara Vittese





# NATIONAL HONORS AND AWARDS



## ALL-AMERICANS BY YEAR TEAM

1990	Amanda Cromwell	2nd
1991	Amanda Cromwell	1st
	Andrea Rubio	1st
1992	Andrea Rubio	1st
1993	Kim Conway	2nd
1979	Cindy Carzo	2nd
1983	Cheryl Gleason	HM
1985	Elaine Maddox	HM
1987	Tracy Whitehurst	HM
1990	Andy Begel	2nd
1992	Kelly Daddona	2nd
1993	Kelly Daddona	2nd
1994	Kristen Daddona	3rd
	Meredith Elwell	3rd
1995	Meridith Thorpe	1st
	Michelle Vizzuso	3rd
1996	Meridith Thorpe	1st
	Michelle Vizzuso	2nd
	Michelle Cusimano	3rd
	Heather Hale	3rd
1997	Meridith Thorpe	1st
	Michelle Vizzuso	1st
	Lori Mastropietro	3rd
1998	Lori Mastropietro	1st
	Michelle Vizzuso	1st
	Meridith Thorpe	2nd
1999	Jessica Coleman	3rd
2000	Jessica Coleman	3rd
2001	Carrie Goodloe	2nd
2003	Katie Jo Gerfen	3rd
2004	Mia Link	3rd
2006	Inge Kaars Sijpesteijn	1st
2007	Inge Kaars Sijpesteijn	3rd
2008	Paige Selenski	2nd
	Inge Kaars Sijpesteijn	3rd
2009	Paige Selenski	1st
	Michelle Vittese	3rd
	Inga Stöckel	2nd
2010	Paige Selenski	1st
	Michelle Vittese	1st
	Elly Buckley	3rd
2011	Elly Buckley	2nd
2012	Paige Selenski	1st
	Michelle Vittese	1st
	Elly Buckley	2nd
2013	Elly Buckley	1st

## NCAA WOMAN OF THE YEAR

1999 Peggy Boutilier

## HONDA AWARD SEMIFINALIST

2009 Paige Selenski  
2010 Paige Selenski

## NCAA ALL-TOURNAMENT TEAM

2009 Paige Selenski  
Michelle Vittese  
2010 Rachel Jennings  
Paige Selenski

## NFHCA REGIONAL PLAYER OF THE YEAR

2009 Paige Selenski  
2012 Paige Selenski

## NFHCA ALL-REGION TEAM

1984	Cheryl Gleason	
	Missy Farwell	
1985	Elaine Maddox	1st
	Lindsay Sheehan	1st
	Susan Crafts	HM
	Missy Farwell	HM
	Natalie Wheattall	HM
1986	Donna DeNoble	1st
	Elaine Maddox	1st
1987	Donna DeNoble	1st
	Tracy Drummond	1st
	Tracy Whitehurst	1st
	Kristen Aceto	HM
1988	Tracy Whitehurst	1st
	Andy Begel	HM
1989	Kristen Aceto	1st
	Andy Begel	1st
	Heather Christman	HM
	Jill Dunham	HM
	Julie Plzak	HM
1990	Andy Begel	1st
	Heather Christman	1st
	Heather Goehringer	1st
	Kelly Daddona	HM
1991	Kelly Daddona	1st
	Cherie Greer	1st
	Denise Wernersbach	1st
1992	Kelly Daddona	1st
	Tara Kelly	1st
	Nicole McNichol	2nd
	Denise Wernersbach	2nd
1993	Kelly Daddona	
	Barbara King	
	Nicole McNichol	
1994	Kristen Daddona	1st
	Barbara King	1st
	Peggy Boutilier	2nd
	Jen Larsen	2nd
	Heidi Waterman	2nd
1995	Heather Hale	1st
	Meridith Thorpe	1st
	Michelle Vizzuso	1st
	Peggy Boutilier	2nd
	Jen Larsen	2nd
1996	Meridith Thorpe	1st
	Michelle Vizzuso	1st
	Heather Hale	1st
	Meredith Elwell	2nd
	Michelle Cusimano	2nd
	Lori Mastropietro	2nd
	Nicole McMaster	2nd
1997	Lori Mastropietro	1st
	Meridith Thorpe	1st
	Michelle Vizzuso	1st
	Kara Ariza	2nd
	Peggy Boutilier	2nd
	Lorraine Vizzuso	2nd
1998	Lori Mastropietro	1st
	Meridith Thorpe	1st
	Michelle Vizzuso	1st
	Meredith Elwell	1st
	Kara Ariza	2nd
	Frances West	2nd
	Lorraine Vizzuso	2nd

1999	Jessica Coleman	1st
	Meredith Elwell	1st
	Lorraine Vizzuso	1st
	Laura Lindsay	2nd
	Julia Richardson	2nd
	Becky Worthington	2nd
2000	Lorraine Vizzuso	1st
	Becky Worthington	1st
	Jessica Coleman	2nd
	Carrie Goodloe	2nd
	Julia Richardson	2nd
2001	Jessica Coleman	1st
	Carrie Goodloe	1st
	Katie Jo Gerfen	2nd
2002	Emily White	2nd
2003	Katie Jo Gerfen	1st
2004	Mia Link	1st
	Katie Jo Gerfen	2nd
2005	Katherine Blair	2nd
	Allison Flynn	2nd
	Mia Link	2nd
2006	Inge Kaars Sijpesteijn	1st
	Mia Link	2nd
	Traci Ragukas	2nd
2007	Inge Kaars Sijpesteijn	2nd
	Traci Ragukas	2nd
2008	Inge Kaars Sijpesteijn	1st
	Paige Selenski	1st
	Traci Ragukas	2nd
	Michelle Vittese	2nd
	Floor Vogels	2nd
2009	Paige Selenski	1st
	Inga Stöckel	1st
	Michelle Vittese	1st
	Kim Kastuk	2nd
	Charlotte van den Broek	2nd
2010	Elly Buckley	1st
	Rachel Jennings	1st
	Paige Selenski	1st
	Michelle Vittese	1st
	Haley Carpenter	2nd
	Kim Kastuk	2nd
	Tara Puffenberger	2nd
2011	Elly Buckley	1st
	Rachel Jennings	2nd
2012	Paige Selenski	1st
	Michelle Vittese	1st
	Jenny Johnstone	1st
	Elly Buckley	1st
	Rachel Sumfest	2nd
	Carissa Vittese	2nd
2013	Elly Buckley	1st
	<b>Lucy Hyams</b>	<b>2nd</b>
	Carissa Vittese	2nd



## ALL-ACC

1985	Missy Farwell	
	Elaine Maddox	
	Lindsay Sheehan	
1986	Tracy Drummond	
	Elaine Maddox	
1987	Donna DeNoble	
	Tracy Drummond	
1988	Tracy Whitehurst	
1989	Kristen Aceto	
	Andy Begel	
1990	Andy Begel	
1991	Cherie Greer	
1992	Kelly Daddona	
1992	Tara Kelly	
	Nicole McNichol	
1993	Kelly Daddona	
	Nicole McNichol	
	Heidi Waterman	
1994	Kristen Daddona	
	Barbara King	
	Heidi Waterman	
1995	Peggy Boutilier	
	Heather Hale	
	Meridith Thorpe	
1996	Meridith Thorpe	
	Michelle Vizzuso	
	Heather Hale	
1997	Lori Mastropietro	
	Meridith Thorpe	
	Michelle Vizzuso	
1998	Lori Mastropietro	
	Meridith Thorpe	
	Michelle Vizzuso	
1999	Jessica Coleman	
	Lorraine Vizzuso	
2000	Jessica Coleman	
2002	Emily White	
2003	Katie Jo Gerfen	
2004	Mia Link	
2006	Inge Kaars Sijpesteijn	
2007	Inge Kaars Sijpesteijn	
2008	Inge Kaars Sijpesteijn	
	Paige Selenski	
2009	Paige Selenski	
	Inga Stöckel	
	Michelle Vittese	
2010	Elly Buckley	
	Paige Selenski	
	Michelle Vittese	
2011	Elly Buckley	
2012	Elly Buckley	
	Jenny Johnstone	
	Paige Selenski	
	Michelle Vittese	
2013	Elly Buckley	1st
	Carissa Vittese	2nd
	<b>Lucy Hyams</b>	<b>2nd</b>

## ACC ALL-TOURNAMENT TEAM

1990	Andy Begel
	Heather Goehringer
1991	Kelly Daddona
	Cherie Greer
1992	Kelly Daddona
	Kelly Hood
	Tara Kelly
1993	Kelly Daddona
1994	Peggy Boutilier
	Kristen Daddona
1995	Michelle Cusimano
	Meridith Thorpe
1996	Meridith Elwell
	Nicole McMaster
1997	Lori Mastropietro
	Becky Worthington
1998	Lori Mastropietro
	Michelle Vizzuso
	Lorraine Vizzuso
1999	Julia Richardson
	Becky Worthington
2000	Julia Richardson
	Lorraine Vizzuso
	Becky Worthington
2001	Carrie Goodloe
	Mason White
2002	Cara Unterkofler
2003	Mia Link
2004	Logan Carr
2006	Inge Kaars Sijpesteijn
	Traci Ragukas
2007	Inge Kaars Sijpesteijn
	Traci Ragukas
2008	Traci Ragukas
2009	Paige Selenski
	Inga Stöckel
	Charlotte van den Broek
2010	Michelle Vittese
2012	Katie Robinson

## ACC PLAYER OF THE YEAR

1998	Lori Mastropietro
2012	Paige Selenski (offensive)

## ACC FRESHMAN OF THE YEAR

1995	Meridith Thrope
1996	Meridith Elwell
2008	Paige Selenski
<b>2013</b>	<b>Lucy Hyams</b>

## ACC COACH OF THE YEAR

1997	Missi Sanders
------	---------------

## ACC SCHOLAR-ATHLETE OF THE YEAR

1983-84	Mary Jo Adams
1988-89	Lesley Groff
1993-94	Kelly Daddona
1996-97	Heather Hale
1997-98	Peggy Boutilier
1998-99	Lori Mastropietro

## ACC 50TH ANNIVERSARY TEAM

(announced in 2002)

Cindy Carzo
Jessica Coleman
Kristen Daddonna
Carrie Goodloe
Lori Mastropietro
Meridith Thrope
Michelle Vizzuso
Becky Worthington





## FIELD HOCKEY TEAM AWARD

(given at annual All Athletics Banquet)

1973-74 Claudia Reasor  
 1974-75 Candy Lindsey  
 1975-76 Kathy Devereux  
 1976-77 Cindy Hook  
 1977-78 Kathy Smith  
 1978-79 Julia Morris, Cecilia Bean  
 1979-80 Cindy Carzo  
 1980-81 Leslie Larson  
 1981-82 Ann Orrison  
 1982-83 Ann Orrison  
 1983-84 Cheryl Gleason  
 1984-85 Cheryl Gleason  
 1985-86 Susan Crafts  
 1986-87 Elaine Maddox  
 1987-88 Tracy Drummond  
 1988-89 Lesley Groff  
 1989-90 Kristen Aceto  
 1990-91 Heather Christman  
 1991-92 Bonnie Rosen  
 1992-93 Tara Kelly  
 1993-94 Kelly Daddona  
 1994-95 Barbara King  
 1995-96 Meridith Thorpe  
 1996-97 Heather Hale, Meridith Thorpe  
 1997-98 Peggy Boutilier  
 1998-99 Lori Mastropietro  
 1999-00 Julia Richardson  
 2000-01 Becky Worthington  
 2001-02 Emily White  
 2002-03 Jessica Coleman  
 2003-04 Katie Jo Gerfen  
 2004-05 Mia Link  
 2005-06 Erin Hayes  
 2006-07 Inge Kaars Sijpesteijn  
 2007-08 Katherine Bounds  
 2008-09 Inge Kaars Sijpesteijn  
 2009-10 Haley Carpenter  
 2010-11 Paige Selenski  
 2011-12 Hadley Bell, Rachel Jennings  
 2012-13 Paige Selenski, Michelle Vittese  
 2013-14 Elly Buckley

## JETTIE HILL MEMORIAL AWARD

Top GPA, Female Fourth-Year  
 1988-89 Lesley Groff  
 1996-97 Heather Hale

## ACC'S WEAVER-JAMES-CORRIGAN POSTGRADUATE SCHOLARSHIP

1994 Denise Wernersbach  
 1998 Peggy Boutilier  
 1999 Melissa Hayes  
 2000 Michelle Vizzuso  
 2001 Lorraine Vizzuso

## MASSMUTUAL UVA SCHOLARSHIP

2001-02 Carrie Goodloe

## BOB GOODMAN MEMORIAL AWARD

1987-88 Maribel Taylor

## CRAIG FIELDER MEMORIAL AWARD

2000-01 Lorraine Vizzuso  
 2008-09 Paige Selenski

## RALPH SAMPSON SCHOLARSHIP

1996-97 Peggy Boutilier  
 2012-13 Elly Buckley

## LIFE SKILLS SCHOLARSHIP AWARD

2013-14 Katie Robinson

## ERNEST H. ERN, JR. AWARD

1997-98 Peggy Boutilier

## IMP AWARD

Outstanding Female Athlete at UVA  
 1975-76 Amy Easter  
 1976-77 Kathy Smith  
 1985-86 Lindsay Sheehan  
 1986-87 Elaine Maddox  
 1989-90 Jill Dunham  
 1996-97 Meridith Thorpe  
 1997-98 Peggy Boutilier





# ACADEMIC ACCOLADES



## NCAA ELITE 88/89 AWARD

2009 Lauren Elstein

## ACADEMIC ALL-DISTRICT

2009 Lauren Elstein  
2nd

## NFHCA NATIONAL ACADEMIC TEAM

1987 Lesley Groff  
 1988 Lesley Groff  
 1992 Denise Wernersbach  
 1993 Denise Wernersbach  
 1994 Michelle Cusimano  
 Heather Hale  
 Barbara King  
 Nicole McMaster

1995 Peggy Boutilier  
 Heather Hale  
 Nicole McMaster

1996 Peggy Boutilier  
 Heather Hale  
 Lori Mastropietro  
 Nicole McMaster  
 Frances West

1997 Peggy Boutilier  
 Melissa Hayes  
 Laura Lindsay  
 Lori Mastropietro  
 Frances West

1998 Amy Broadwater  
 Melissa Hayes  
 Laura Lindsay  
 Lori Mastropietro,  
 Frances West  
 Becky Worthington

1999 Carrie Goodloe  
 Laura Lindsay  
 Kristy Sott  
 Becky Worthington

2000 Carrie Goodloe  
 Kristy Sott  
 Becky Worthington

2001 Carrie Goodloe

2002 Katherine Blair  
 Cara Unterkofler  
 Emily White

2003 Katherine Blair  
 Alyssa Curmaci

2004 Katherine Blair  
 Allie Breininger  
 Carmen Hoskin

2005 Katherine Blair

2006 Katherine Blair  
 Katherine Bounds  
 Lauren Elstein  
 Mia Link  
 Kelsey Vonier

2007 Katherine Bounds  
 Lauren Elstein  
 Laura Nelson  
 Kelsey Vonier

2008 Lauren Elstein  
 Rachel Jennings  
 Floor Vogels

2009 Lauren Elstein  
 Rachel Jennings  
 Charlotte van den Broek  
 Floor Vogels  
 Phoebe Willis

2010 Liza Blue  
 Elly Buckley  
 Elizabeth Hanks  
 Katie Robinson  
 Lane Smith

2011 Elizabeth Hanks  
 Lane Smith  
 Jess Orrett  
 Katie Robinson  
 Sallie Seiy  
 Phoebe Willis

2012 Hadley Bell  
 Elizabeth Hanks  
 Jenny Johnstone  
 Lane Smith  
 Katie Robinson  
 Phoebe Willis

## ALL-ACC ACADEMIC TEAM

2005 Katherine Blair  
 Allison Flynn  
 Mia Link

2006 Katherine Blair  
 Katherine Bounds  
 Biffy Cornelison  
 Mia Link  
 Traci Ragukas

2007 Katherine Bounds  
 Lauren Elstein

2008 Lauren Elstein  
 Rachel Jennings  
 Floor Vogels

2009 Kim Kastuk  
 Inga Stöckel  
 Charlotte van den Broek  
 Floor Vogels

2010 Elly Buckley  
 Rachel Jennings

2011 Rachel Jennings  
 Jenny Johnstone  
 Hadley Bell  
 Chloe Pendlebury  
 Lane Smith  
 Rachel Sumfest

2012 Hadley Bell  
 Maddie DeCerbo  
 Jenny Johnstone  
 Katie Robinson  
 Rachel Sumfest  
 Hadley Bell

2013 **Caleigh Foust**  
**Jenny Johnstone**  
**Kelsey LeBlanc**  
 Katie Robinson

## ACC ACADEMIC HONOR ROLL

1984 Mary Jo Adams  
 Wendy Bortle  
 Paddi Dean  
 Barbara Deutsch  
 Mary Farwell  
 Jean Gordon  
 Julie Robinson  
 Dru Scheifele  
 Carole Wagner  
 Natalie Wheatall

1985 Lee Cooper  
 Paddi Dean  
 Mary Farwell  
 Amy Feldkamp  
 Cheryl Gleason  
 Sue Lombardi  
 Julie Robinson  
 Laua Sullivan  
 Carole Wagner  
 Natalie Wheatall

1986 Susan Day  
 Mary Farwell  
 Sue Lombardi  
 Carole Wagner  
 Natalie Wheatall  
 Susie Williams

1987 Susan Day  
 Donna DeNoble  
 Sheryl Deutsch  
 Lesley Groff  
 Dana Henry  
 Susie Williams  
 Heather Christman  
 Sheryl Deutsch  
 Lesley Groff  
 Dana Henry  
 Becky Lewis  
 Sue Lombardi  
 Elizabeth Nolley  
 Barbara Richards  
 Susie Williams  
 Sheryl Deutsch  
 Lesley Groff  
 Elizabeth Nolley  
 Robin Nye  
 Barbara Richards  
 Tracy Whitehurst  
 Susie Williams

1990 Kristen Aceto  
 Lyndia Brumback  
 Stacey Chaplin  
 Heather Christman  
 Sheryl Deutsch  
 Robin Nye

1991 Stacey Chaplin  
 Heather Christman  
 Katherine Hanson  
 Tara Kelly  
 Cynthia Mathes  
 Robin Nye  
 Bonnie Rosen  
 Denise Wernersbach

1992 Kelly Daddona  
 Elaine Jones  
 Tara Kelly  
 Tara Lauria  
 Nicole McNichol  
 Christina Miller  
 Lisa Plzak  
 Bonnie Rosen  
 Denise Wernersbach

1993 Kelly Daddona  
 Tara Kelly  
 Christina Miller  
 Lisa Plzak  
 Denise Wernersbach

1994 Hadley Bauer  
 Amy Clothier  
 Michelle Cusimano  
 Christine Grunewald  
 Heather Hale  
 Barbara King  
 Nicole McMaster

1995 Peggy Boutilier  
 Amy Broadwater  
 Michelle Cusimano  
 Kristen Daddona  
 Christine Grunewald  
 Heather Hale  
 Julie Jakum  
 Barbara King  
 Stacy Kuhlkin  
 Nicole McMaster  
 Lisa Plzak

1996 Kara Ariza  
 Peggy Boutilier  
 Amy Broadwater  
 Michelle Cusimano  
 Christine Grunewald  
 Heather Hale  
 Melissa Hayes  
 Julie Jakum  
 Jennifer Larsen  
 Lori Mastropietro  
 Nicole McMaster  
 Michelle Vizzuso  
 Frances West

1997 Amy Broadwater  
 Natalie Crane  
 Michelle Cusimano  
 Heather Hale  
 Laura Lindsay  
 Lori Mastropietro  
 Nicole McMaster  
 Michelle Vizzuso  
 Frances West

1998 Kara Ariza  
 Amy Broadwater  
 Natalie Crane  
 Laura Lindsay  
 Lorraine Vizzuso  
 Ellen Weise  
 Frances West  
 Becky Worthington



## ACC ACADEMIC HONOR ROLL (CONT.)

1999	Kara Ariza Amy Broadwater Natalie Crane Carrie Goodloe Laura Lindsay Lori Mastropietro Meridith Thorpe Lorraine Vizzuso Frances West Becky Worthington	2007	Katherine Bounds Lauren Elstein Jamie Mulhare
2000	Natalie Crane Meredith Elwell Carrie Goodloe Laura Lindsay Julia Richardson Lorraine Vizzuso Cara Unterkofler Emily White Courtney Wilson Becky Worthington	2008	Lauren Elstein Rachel Jennings Adrienne Ostroff Floor Vogels
2001	Abigail Crawford Carrie Goodloe Kelli Hill Lorraine Vizzuso Emily White Mason White Becky Worthington	2009	Shelly Edmonds Lauren Elstein Kaitlyn Hiltz Rachel Jennings Adrienne Ostroff Boyd Vicars Phoebe Willis
2002	Katherine Blair Logan Carr Katie Jo Gerfen Kelli Hill Cara Unterkofler Emily White	2010	Hadley Bell Liza Blue Elly Buckley Elizabeth Hanks Rachel Jennings Kim Kastuk Adrienne Ostroff Katie Robinson Lane Smith Phoebe Wil-
2003	Katherine Blair Logan Carr Katie Jo Gerfen Kelli Hill Sarah Miller Lindsey Selfridge Cara Unterkofler Rosemary Walker Emily White	lis	
2004	Katherine Blair Katherine Bounds Allie Breininger Allie Flynn Carmen Hoskin Mia Link Sarah Miller Lindsay O'Bannon Katie Phillips Lindsey Selfridge	2011	Rachel Jennings Hadley Bell Chloe Pendlebury Lane Smith Jenny Johnstone Rachel Sumfest
2005	Katherine Blair Allie Flynn	2012	Hadley Bell Tollie Bell Elly Buckley Maddie DeCerbo Elizabeth Hanks Jenny Johnstone Britt Knouse Kelsey LeBlanc Jess Orrett Katie Robinson Lane Smith Carissa Vittese Michelle Vittese Phoebe Willis
2006	Katherine Blair Katherine Bounds Biffy Cornelison Mia Link Traci Ragukas	2013	Hadley Bell Tollie Bell Elly Buckley Maddie DeCerbo Caleigh Foust Elizabeth Hanks Rebecca Holden Jenny Johnstone Megan Kelly Kelsey LeBlanc Jess Orrett Katie Robinson Lane Smith Carissa Vittese Sarah Weber





# SERIES RECORDS



Opponent	W	L	T	Streak
<b>Albany</b>	<b>1</b>	<b>0</b>	<b>0</b>	<b>W1</b>
American	1	1	0	L1
Appalachian State	6	0	0	W6
Ball State	2	0	0	W2
<b>Boston College</b>	<b>10</b>	<b>6</b>	<b>0</b>	<b>W1</b>
<b>Boston University</b>	<b>2</b>	<b>4</b>	<b>0</b>	<b>W1</b>
Bridgewater	7	2	1	W6
Bucknell	1	0	0	W1
CSU - Long Beach	0	1	0	L1
California	2	2	0	L1
California - Davis	1	0	0	W1
Central Michigan	3	1	0	L1
Clemson	2	0	0	W2
Connecticut	0	3	0	L3
Cornell	3	1	0	W3
Dartmouth	2	0	0	W2
Davidson	4	0	0	W4
Davis & Elkins	6	4	0	W2
Delaware	7	6	1	W3/U5
Drexel	1	0	0	W1
<b>Duke</b>	<b>32</b>	<b>17</b>	<b>0</b>	<b>L1</b>
Eastern Kentucky	3	0	0	W3
Eastern Mennonite	2	0	1	W2/U3
Georgetown	6	0	0	W6
Goucher	3	0	0	W3
High Point	1	0	0	W1
Hofstra	1	0	0	W1
Hollins	5	0	2	W
Indiana	1	0	0	W1
Iowa	3	2	0	W3
James Madison	30	12	1	W1
Kent State	3	0	0	W3
Lafayette	1	0	0	W1
<b>Liberty</b>	<b>1</b>	<b>0</b>	<b>0</b>	<b>W1</b>
Longwood	17	2	1	W10
<b>Louisville</b>	<b>4</b>	<b>1</b>	<b>0</b>	<b>W2</b>
Loyola	4	1	0	W2
Lynchburg	9	3	1	W8

Opponent	W	L	T	Streak
Maine	2	0	0	W2
Mary Washington	3	1	1	W3/U4
Maryland	20	39	2	L2
Massachusetts	3	5	1	L3
<b>Miami (Ohio)</b>	<b>7</b>	<b>0</b>	<b>0</b>	<b>W7</b>
Michigan	3	2	0	L2
Michigan State	4	2	0	W1
Monmouth	1	0	0	W1
New Hampshire	3	3	2	W2
<b>North Carolina</b>	<b>16</b>	<b>49</b>	<b>0</b>	<b>L6</b>
UNC-Greensboro	1	0	0	W1
Northeastern	4	1	0	L2
Northwestern	8	3	0	W1
Ohio	5	0	0	W5
Ohio State	10	1	0	W5
<b>Old Dominion</b>	<b>13</b>	<b>33</b>	<b>0</b>	<b>W2</b>
Oregon	1	0	0	W1
Pacific	2	0	0	W2
Penn	1	0	0	W1
<b>Penn State</b>	<b>6</b>	<b>15</b>	<b>0</b>	<b>W2</b>
<b>Princeton</b>	<b>4</b>	<b>5</b>	<b>0</b>	<b>L3</b>
Providence	4	0	0	W4
Purdue	1	0	0	W1
Quinnipiac	3	0	0	W3
<b>Radford</b>	<b>25</b>	<b>0</b>	<b>0</b>	<b>W25</b>
Randolph-Macon	2	0	1	W2/U3
<b>Richmond</b>	<b>33</b>	<b>4</b>	<b>1</b>	<b>W8</b>
Roanoke	4	1	1	W4/U5
<b>Rutgers</b>	<b>1</b>	<b>0</b>	<b>0</b>	<b>W1</b>
Saint Francis	1	0	0	W1
Saint Joseph's	5	1	0	W3
Saint Louis	2	0	0	W2
S Connecticut	0	1	0	L1
Southern Illinois	3	0	0	W3
SW Missouri St.	3	0	0	W3
Springfield	3	0	0	W3
Stanford	1	0	0	W1
Sweet Briar	2	0	1	W2/U3

Opponent	W	L	T	Streak
<b>Syracuse</b>	<b>2</b>	<b>1</b>	<b>0</b>	<b>L1</b>
Temple	1	2	0	W2
Towson	13	0	0	W13
Ursinus	1	0	0	W1
Virginia Cmnwlth	29	0	0	W29
<b>Vermont</b>	<b>3</b>	<b>0</b>	<b>0</b>	<b>W3</b>
Villanova	11	1	0	W4
Virginia Tech	13	2	1	W7
<b>Wake Forest</b>	<b>20</b>	<b>16</b>	<b>0</b>	<b>W3</b>
West Chester	1	3	0	W1
<b>William &amp; Mary</b>	<b>26</b>	<b>15</b>	<b>2</b>	<b>L1</b>
Winthrop	1	0	0	W1
Yale	4	0	0	W4

**Bold** indicates 2014 opponents



# YEAR-BY-YEAR SUMMARY



Year	Overall Record	ACC Record	Head Coach	Postseason
1973	0-4-7		Chesley Garrett	
1974	7-3-2		Dr. Diane Wakat	
1975	12-2-1		Linda Southworth	
1976	14-3-2		Linda Southworth	
1977	16-2-1		Linda Southworth	AIAW Regional
1978	19-3-0		Linda Southworth	AIAW Semifinals
1979	15-4-0		Linda Southworth	AIAW Regional
1980	11-7-0		Linda Southworth	AIAW Regional
1981	17-6-0		Linda Southworth	AIAW Quarterfinals
1982	14-5-0		Linda Southworth	NCAA First Round
1983	11-9-0	1-1	Jane Miller	
1984	11-8-0	0-3	Jane Miller	NCAA Quarterfinals
1985	12-7-0	2-1	Jane Miller	NCAA First Round
1986	10-7-1	1-1-1	Jane Miller	
1987	13-6-0	3-1*	Jane Miller	NCAA First Round
1988	8-10-0	0-3	Jane Miller	
1989	12-6-0	2-1	Jane Miller	
1990	13-6-2	1-2	Jane Miller	
1991	10-6-4	0-2-1	Jane Miller	
1992	15-6-1	2-2	Julie Dayton	NCAA First Round
1993	10-8-0	2-2	Missi Sanders	
1994	10-11-0	4-4	Missi Sanders	
1995	13-9-0	3-5	Missi Sanders	NCAA First Round
1996	18-5-0	5-3	Missi Sanders	NCAA Quarterfinals
1997	19-3-0	4-0*	Missi Sanders	NCAA Semifinals
1998	18-5-0	4-0*	Missi Sanders	NCAA Semifinals
1999	13-8-0	1-3	Jessica Wilk	NCAA First Round
2000	14-8-0	1-3	Jessica Wilk	NCAA First Round
2001	14-8-0	2-2	Jessica Wilk	NCAA Quarterfinals
2002	9-11-0	0-4	Jessica Wilk	
2003	10-10-0	0-4	Jessica Wilk	
2004	10-10-0	0-4	Jessica Wilk	
2005	8-11-0	0-5	Jessica Wilk	
2006	14-8-0	1-4	Michele Madison	NCAA Quarterfinals
2007	11-10-0	1-4	Michele Madison	NCAA First Round
2008	14-9-0	2-3	Michele Madison	NCAA Quarterfinals
2009	20-4-0	3-2	Michele Madison	NCAA Semifinals
2010	18-4-0	3-2	Michele Madison	NCAA Semifinals
2011	8-12-0	1-4	Michele Madison	
2012	16-6-0	4-1	Michele Madison	NCAA Quarterfinals
2013	15-6-0	3-3	Michele Madison	NCAA First Round

**TOTALS** 523-276-21  
**ACC** 55-75-2

\* finished first in regular season

## MILESTONE GAMES

Game	Date	Opponent	Result
1	9-29-73	Roanoke	L, 0-2
100	9-25-79	Bridgewater	W, 7-0
200	9-12-84	VCU	W, 3-0
300	10-6-89	Duke	W, 3-2
400	10-1-94	Duke	W, 1-0
500	11-20-98	Old Dominion	L, 0-3
600	10-14-03	Cornell	W, 4-0
700	10-04-08	Maryland	L, 4-3
800	09-01-13	Penn State	W, 4-2

## HOME GAMES PLAYED

Game	Date	Opponent	Result
1	9-29-73	Roanoke	L, 0-2
50	9-25-81	Maryland	W, 3-2
100	9-18-87	Maryland	W, 2-1
150	10-21-92	American	W, 3-1
200	9-10-98	Northeastern	W, 5-3
250	9-17-03	James Madison	W, 3-2
300	9-22-07	Boston College	L, 1-2
350	09-28-12	Maryland	W, 3-2

## WINS

Game	Date	Opponent	Result
1	10-3-74	Hollins	2-1
50	9-21-78	Longwood	4-1
100	9-29-81	Richmond	6-0
150	9-14-85	@ Davis & Elkins	6-1
200	10-15-89	Delaware	1-0
250	11-2-93	Delaware	4-2
300	10-1-97	William & Mary	3-1
350	10-13-00	Georgetown	3-1
400	8-28-05	Ball State	7-1
500	9-23-12	Boston U. (at Harvard)	2-0

## VIRGINIA COACHING HISTORY

Head Coach	Seasons	Years	Record	Pct.
Chesley Garrett	1	1973	0-4-7	.318
Dr. Diane Wakat	1	1974	7-3-2	.666
Linda Southworth	8	1975-1982	118-32-4	.781
Jane Miller	9	1983-1991	100-65-7	.602
Julie Dayton	1	1992	15-6-1	.705
Missi Sanders	6	1993-98	88-41-0	.704
Jessica Wilk	6	1999-2005	78-66-0	.542
Michele Madison	8	2006-present	116-59-0	.662
<b>Totals</b>	<b>38</b>	<b>1973-2010</b>	<b>523-276-21</b>	<b>.650</b>



# YEAR-BY-YEAR RESULTS



## 1973 (0-4-7)

Coach: Chesley Garrett

S29	<b>Roanoke</b>	2-0	L
O3	Hollins	1-1	T
O5	<b>Bridgewater</b>	1-1	T
O9	<b>Lynchburg</b>	1-0	L
O12	Virginia Tech	2-0	L
O18	Randolph-Macon	0-0	T
O20	Eastern Mennonite	0-0	T
O25	<b>Sweet Briar</b>	1-1	T
O31	Mary Washington	4-1	L
N3	Virginia Tech^	0-0	T
N3	Lynchburg^	1-1	T

^ Blue Ridge Tournament - Hollins, Va.

## 1974 (7-3-2)

Coach: Dr. Diane Wakat

S21	<b>Mary Washington</b>	1-1	T
S25	<b>Roanoke</b>	1-1	T
O1	Bridgewater	3-2	L
O3	<b>Hollins</b>	2-1	W
O11	Lynchburg	5-1	L
O16	Virginia Commonwealth	2-0	W
O19	<b>Virginia Tech</b>	6-0	W
O22	Sweet Briar	6-1	W
O28	<b>Randolph-Macon</b>	2-0	W
N1	Bridgewater^	2-1	W
N2	Lynchburg^	2-1	L
N2	Virginia Tech^	5-0	W

^ Blue Ridge Tournament - Sweet Briar, Va.

## 1975 (12-2-1)

Coach: Linda Southworth

S30	<b>Bridgewater</b>	2-0	L
O6	Longwood	2-1	W
O13	Randolph-Macon	8-0	W
O16	<b>Lynchburg</b>	2-0	W
O21	<b>Sweet Briar</b>	8-0	W
O23	Hollins College	1-1	T
O28	Lynchburg	4-0	W
N4	<b>Virginia Commonwealth</b>	2-1	W
N5	Westhampton	5-1	W
N7	Madison ^	2-0	W
N7	Roanoke^	2-0	W
N8	Bridgewater^	1-0	W
N8	Lynchburg^	2-0	W
N14	Longwood%	3-2	L
N15	Eastern Kentucky%	2-1	W

^ Blue Ridge Tournament - Hollins, Va.  
% AIAW Southern Regional II Tournament - Fredericksburg, Va.

## 1976 (14-3-2)

Coach: Linda Southworth

**AIAW National Quarterfinals**

S28	<b>Mary Washington</b>	6-1	W
O5	Virginia Commonwealth	1-0	W
O8	Goucher	6-0	W
O13	<b>Longwood</b>	2-2	T
O16	<b>Virginia Tech</b>	1-0	W
O19	Bridgewater	4-0	W
O22	<b>North Carolina</b>	3-1	W
O25	Old Dominion	3-1	W
N2	<b>William &amp; Mary</b>	1-1	T
N5	Virginia Tech^	2-0	W
N5	Roanoke^	4-0	W
N6	Bridgewater^	1-0	W
N6	Madison^\$	0-0	W
N12	Eastern Kentucky%	7-0	W
N12	Longwood%	3-1	W
N13	William & Mary%	1-0	L
N24	Central Michigan#	3-1	W
N25	Delaware#\$	2-2	LPT
N25	So. Connecticut#	2-1	L

\$ Tie broken by penetration time  
^ Blue Ridge Tournament - Hollins, Va.  
% AIAW Region II Tournament - Winthrop, S.C.  
# AIAW National Tournament - Valley Forge, Pa.

## 1977 (16-2-1)

Coach: Linda Southworth

S22	Longwood	1-0	W
S27	<b>Bridgewater</b>	2-1	W
S30	<b>Goucher</b>	3-0	W
O4	James Madison	1-1	T
O7	North Carolina	3-2	W
O8	UNC-Greensboro	5-1	W
O11	<b>Lynchburg</b>	6-0	W
O18	Mary Washington	2-1	W
O21	<b>Towson State</b>	1-0	W
O22	Virginia Tech	3-0	W
O25	<b>Old Dominion</b>	2-0	W
O27	<b>Westhampton</b>	5-2	W
O29	<b>Maryland</b>	2-1	W
N1	William & Mary	1-0	W
N4	Virginia Tech^	2-1	WPS
N5	James Madison^	1-0	L
N11	William & Mary%	3-2	LPS
N12	Winthrop%	3-0	W
N12	Louisville%	2-0	W

^ Blue Ridge Tournament - Hollins, Va.  
% AIAW Region II Tournament - Williamsburg, Va.

## 1978 (19-3-0)

Coach: Linda Southworth

**AIAW National Quarterfinals**

S21	<b>Longwood</b>	4-1	W
S26	Bridgewater	6-0	W
S29	Maryland	2-1	W
S30	Goucher	13-0	W
O3	Lynchburg	5-0	W
O6	<b>Hollins</b>	2-0	W
O12	<b>James Madison</b>	4-1	W
O14	<b>Eastern Mennonite</b>	5-0	W
O18	Roanoke	3-0	W
O21	<b>Virginia Tech</b>	2-1	LPS
O24	Old Dominion	3-1	W
O26	Richmond	3-0	W
O31	<b>William &amp; Mary</b>	2-0	W
N3	Mary Washington-	4-0	W
N3	William & Mary-	1-0	WPS
N4	Old Dominion-	1-0	W
N10	Hollins%	1-0	W
N10	High Point%	1-0	W
N11	North Carolina%	1-0	W
N21	Oregon#	1-0	W
N22	West Chester#	2-1	L
N22	California State Long Beach#1-0	L	

- State Tournament - Farmville, Va.  
% AIAW Region II Tournament - Hollins, Va.  
# USFHA-AIAW National Tournament - Ellensburg, Wash.

## 1979 (15-4-0)

Coach: Linda Southworth

S20	Longwood	4-2	W
S25	<b>Bridgewater</b>	7-0	W
S29	<b>Towson State</b>	3-1	W
O2	<b>Lynchburg</b>	3-0	W
O6	<b>North Carolina</b>	1-0	WPS
O11	Eastern Mennonite	5-0	W
O13	James Madison	1-0	WPS
O17	<b>Roanoke</b>	2-0	W
O19	Virginia Tech	4-3	W2OT
O20	<b>Louisville</b>	5-0	W
O23	<b>Old Dominion</b>	3-0	W
O23	<b>Richmond</b>	4-0	W
O30	William & Mary	1-0	L
N2	Virginia Tech-	1-0	W
N3	James Madison-	4-3	LPS
N8	<b>Maryland</b>	3-2	LPS
N16	E. Kentucky%	1-0	W
N16	James Madison%(ps)	2-1	W
N17	William & Mary%	1-0	L

- Virginia State Tournament - Harrisonburg, Va.  
% AIAW Region II Tournament - Williamsburg, Va.

## 1980 (11-7-0)

Coach: Linda Southworth

S19	Lynchburg	5-0	W
S23	<b>Longwood (ps)</b>	5-4	L
S26	Maryland	2-1	L
S27	Towson State	2-0	W
O2	<b>Hollins</b>	6-0	W
O4	North Carolina	2-0	W
O8	<b>James Madison</b>	2-0	W
O11	Richmond	2-0	W
O16	<b>Virginia Tech</b>	1-0	W
O18	<b>Penn State</b>	2-0	L
O21	Old Dominion	5-0	L
O28	<b>William &amp; Mary</b>	2-0	L
O31	<b>Longwood-</b>	2-0	W
N1	<b>William &amp; Mary-</b>	4-1	L
N1	<b>James Madison- (ps)</b>	2-1	W
N7	Clemson%	2-0	W
N7	William & Mary%	3-0	L
N8	North Carolina%	5-0	W

-VAIAW State Tournament- Charlottesville, Va.  
%AIAW Region II Tournament - High Point, N.C.

## 1981 (17-6-0)

Coach: Linda Southworth

**AIAW National Tournament**

S11	Connecticut+	4-0	L
S12	Ohio State+	4-0	W
S18	<b>Lynchburg</b>	2-0	W
S22	Longwood	3-0	W
S25	<b>Maryland</b>	3-2	W
S26	<b>Towson State</b>	7-0	W
S29	<b>Richmond</b>	6-0	W
O1	Hollins	8-0	W
O3	<b>North Carolina</b>	4-0	W
O7	James Madison (ot)	3-2	W
O10	<b>Delaware</b>	2-1	L
O13	<b>Clemson (ps)</b>	1-0	W
O15	Virginia Tech	2-0	W
O21	<b>Old Dominion</b>	1-0	L
O25	Penn State	3-0	L
O27	William & Mary	1-0	W
O30	Longwood-	3-0	W
O31	James Madison-	2-0	W
N6	Duke%	2-0	W
N7	North Carolina%	1-0	W
N19	Davis & Elkins (ot)#	1-0	L
N20	California#	3-0	L
N21	Dartmouth (ot) #	3-2	W

+ Storrs, Conn.  
- VAIAW State Tournament - Harrisonburg, Va.  
% AIAW Region II Tournament - Blacksburg, Va.  
# AIAW National Tournament - Berkeley, Calif.

## 1982 (14-5-0)

Coach: Linda Southworth

**NCAA Tournament**

S10	<b>Ohio State</b>	2-0	W
S17	Lynchburg	6-1	W
S21	<b>Longwood</b>	8-1	W
S24	Maryland	5-1	W
S25	Towson State	4-1	W
S29	North Carolina	2-0	L
O4	Virginia Commonwealth	7-0	W
O6	<b>James Madison</b>	3-2	W
O9	Delaware	3-1	L
O12	Richmond	4-0	W
O16	<b>Duke</b>	5-1	W
O17	<b>Maryland</b>	2-0	W
O23	<b>Penn State</b>	1-0	W
O26	<b>William &amp; Mary</b>	2-1	W
O29	<b>Virginia Tech</b>	2-1	W
O30	<b>Purdue</b>	2-1	W
N3	Old Dominion	2-0	L
N6	<b>Davis &amp; Elkins</b>	2-1	L
N13	Northwestern #	4-2	L

# NCAA Tournament - Norfolk, Va.





# YEAR-BY-YEAR RESULTS



## 1983 (11-9-0, 1-1 ACC)

Coach: Jane Miller

S15	<b>Virginia Commonwealth</b>	1-0	W
S21	Virginia Tech	6-0	W
S23	<b>Maryland</b>	1-0	W
S27	Davis & Elkins	3-1	L
S30	<b>North Carolina</b>	1-0	L
O1	<b>Delaware</b>	5-4	W
O5	James Madison	3-2	L
O8	West Chester+	2-0	L
O9	Springfield	1-0	W
O12	<b>Richmond</b>	3-0	W
O15	Maryland*	2-1	L
O16	Wake Forest*	8-0	W
O18	William & Mary	2-1	WOT
O21	<b>Southern Illinois</b>	2-0	W
O23	Penn State	1-0	L
O28	Temple	5-0	L
N1	<b>Old Dominion</b>	5-1	L
N4	Virginia Tech-	3-0	W
N4	James Madison -	1-0	LOT
N5	Virginia Commonwealth-	1-0	W

+ Springfield, Mass.

\* ACC Tournament - Chapel Hill, N.C.

- Virginia Intercollegiate League Championship - Williamsburg, Va.

## 1984 (11-8-0, 0-3 ACC)

### NCAA Quarterfinals

Coach: Jane Miller

S7	Boston College	2-1	L2OT
S9	Massachusetts	3-2	L
S12	<b>Virginia Commonwealth</b>	3-0	W
S17	<b>Davis &amp; Elkins</b>	2-0	W
S21	Maryland	3-2	L
S25	Richmond	1-0	W
S27	<b>Radford</b>	8-1	W
S29	Delaware	1-0	W
O3	<b>James Madison</b>	3-1	W
O6	North Carolina	3-0	L
O7	Duke	1-0	L
O11	<b>Southern Illinois</b>	2-0	W
O18	Old Dominion	5-0	L
O26	Villanova	4-3	W2OT
O30	<b>Penn State</b>	2-1	W
N3	<b>Maryland*</b>	1-0	W
N4	<b>North Carolina*</b>	2-1	L
N10	North Carolina#	2-1	WPS
N11	Old Dominion#	10-0	L

\* ACC Tournament - Charlottesville, Va.

# NCAA Tournament - Norfolk, Va.

## 1985 (12-7-0, 2-1 ACC)

### NCAA First Round

Coach: Jane Miller

S7	Springfield	3-1	W
S8	Massachusetts	2-1	L
S11	<b>Virginia Commonwealth</b>	5-0	W
S14	Davis & Elkins	6-1	W
S20	<b>Maryland</b>	5-2	W
S24	<b>Richmond</b>	4-0	W
O6	<b>Delaware</b>	2-1	L
O8	<b>North Carolina</b>	3-2	L
O13	<b>Boston University</b>	1-0	L
O16	<b>Old Dominion</b>	2-1	W
O20	<b>Duke</b>	4-0	W
O24	William & Mary (ot)	2-1	W
O26	<b>Villanova</b>	4-1	W
O29	Radford	4-3	W
N2	Maryland*	2-1	W
N3	North Carolina*	4-0	L
N7	James Madison	2-1	W
N9	Penn State	3-1	L
N16	Old Dominion#	3-1	L

\* ACC Tournament - Chapel Hill, N.C.

# NCAA Tournament - Chapel Hill, N.C.

## 1986 (10-7-1, 1-1 ACC)

Coach: Jane Miller

S6	Springfield	3-1	W
S7	Massachusetts	4-0	L
S10	<b>Virginia Commonwealth</b>	2-0	W
S14	<b>Penn State</b>	2-0	L
S16	<b>Davis &amp; Elkins</b>	4-0	W
S19	Maryland	1-1	T
S23	Richmond	2-1	W
S25	<b>Radford</b>	2-0	W
O1	<b>James Madison</b>	1-0	L
O4	Delaware	4-0	L
O8	North Carolina	5-0	L
O9	Duke	2-1	WOT
O15	Old Dominion	2-1	L
O17	<b>So. Illinois</b>	5-0	W
O19	<b>Maine</b>	2-1	W
O21	<b>William &amp; Mary</b>	1-0	W
O26	Villanova	2-0	W
O31	Maryland*	3-0	L

\*ACC Tournament - College Park, Md.

## 1987 (13-6-0, 3-1 ACC)

### ACC Regular Season Champions

#### NCAA First Round

Coach: Jane Miller

S11	<b>Ohio State</b>	2-1	W
S13	Massachusetts+	4-3	WOT
S15	Davis & Elkins	3-0	L
S18	<b>Maryland</b>	2-1	W
S22	<b>Richmond</b>	2-1	W
S24	Radford	3-1	W
S27	Wake Forest	5-0	W
S30	James Madison	2-1	W
O6	<b>North Carolina</b>	4-0	L
O10	<b>Duke</b>	4-1	W
O14	<b>Old Dominion</b>	2-0	L
O17	<b>Delaware</b>	1-0	W
O21	William & Mary	1-0	W
O23	<b>Towson State</b>	8-0	W
O25	<b>Villanova</b>	2-1	W
O28	<b>Loyola</b>	3-1	W
O31	Maryland*	5-2	L
N7	Penn State	3-1	L
N14	Old Dominion#	4-0	L

+ Norfolk, Va.

\* ACC Tournament - Chapel Hill, N.C.

# NCAA First/Second rnds - Chapel Hill, N.C.

## 1988 (8-10-0, 0-3 ACC)

Coach: Jane Miller

S9	Boston College	1-0	L
S11	New Hampshire +	2-1	L
S16	Maryland	4-1	L
S18	<b>Wake Forest</b>	5-0	W
S20	Richmond	2-0	W
S22	<b>Radford</b>	7-0	W
S25	<b>Penn State</b>	2-1	L
S28	<b>James Madison</b>	3-2	W
O2	West Chester	2-1	L
O8	Duke	1-0	L
O9	North Carolina	8-0	L
O12	Old Dominion	4-2	L
O15	Delaware	3-1	L
O19	<b>William &amp; Mary</b>	3-1	W
O23	Villanova	3-1	W
O26	Loyola	7-0	W
O29	<b>North Carolina*</b>	5-0	L
N3	<b>Davis &amp; Elkins</b>	9-1	W

+ Chestnut Hill, Mass.

\* ACC Tournament - Charlottesville, Va.

## 1989 (12-6-0, 2-1 ACC)

Coach: Jane Miller

S9	Southwest Missouri St. +	2-1	W
S10	Ohio State	3-1	W
S13	<b>Maryland</b>	2-0	W
S16	New Hampshire -	3-0	L
S19	<b>Richmond</b>	2-1	WOT
S21	Radford ^	1-0	W
S26	James Madison	3-2	W2OT
S28	<b>North Carolina</b>	4-0	L
O3	Virginia Commonwealth	1-0	W
O6	<b>Duke</b>	3-2	W2OT
O9	<b>Providence</b>	3-1	W
O12	<b>Old Dominion</b>	1-0	L
O15	<b>Delaware</b>	1-0	W
O18	William & Mary	1-0	L
O20	<b>Towson State</b>	5-1	W
O22	<b>Villanova</b>	4-0	W
O25	<b>Loyola</b>	3-2	LOT
O28	Maryland*	3-2	L

+ Columbus, Ohio

- Norfolk, Va.

^ Blacksburg, Va.

\* ACC Tournament - Durham, N.C.

## 1990 (13-6-2, 1-2 ACC)

Coach: Jane Miller

S2	<b>Central Michigan</b>	3-2	WOT
S8	St. Louis	1-0	W
S9	Michigan+	1-0	W
S13	Maryland	2-1	W2OT
S15	Miami^	1-0	W
S16	New Hampshire ^	0-0	T
S18	<b>Richmond</b>	1-0	W
S20	<b>Radford</b>	4-1	W
S25	<b>James Madison</b>	2-1	W
S30	<b>Penn State</b>	6-0	L
O2	<b>Virginia Commonwealth</b>	2-0	W
O7	<b>Duke</b>	2-1	L
O10	Old Dominion	6-1	L
O13	Delaware	0-0	T
O17	<b>William &amp; Mary</b>	1-0	L
O19	<b>Towson State</b>	5-0	W
O21	Villanova	3-0	W
O24	Loyola	3-0	W
O27	Hofstra%	6-0	W
O28	North Carolina	2-1	L
N3	Duke*	2-1	L

+ St. Louis, Mo.

^ Durham, N.C.

% Chapel Hill, N.C.

\*ACC Tournament - College Park, Md.

## 1991 (10-6-4, 0-2-1 ACC)

Coach: Jane Miller

S7	New Hampshire +	2-2	T
S8	Boston College	1-0	W
S12	<b>Maryland</b>	1-1	T
S15	<b>Delaware</b>	1-0	WOT
S17	<b>Richmond</b>	5-0	W
S19	Radford	2-1	W
S22	<b>Michigan</b>	3-0	W
S24	James Madison	1-0	W
S29	Penn State	4-1	L
O2	Virginia Commonwealth	4-1	W
O4	<b>Pacific</b>	2-0	W
O6	Duke	1-0	L
O10	<b>Old Dominion</b>	9-0	L
O16	William & Mary	0-0	T
O20	<b>Villanova</b>	1-0	L
O27	<b>North Carolina</b>	3-0	L
O30	<b>Loyola</b>	5-0	W
N2	Massachusetts%	1-1	T
N8	Wake Forest*	6-0	W
N9	Maryland*	2-0	L

+ Chestnut Hill, Mass.

% College Park, Md.

\* ACC Tournament - Chapel Hill, N.C.



# YEAR-BY-YEAR RESULTS



## 1992 (15-6-1, 2-2 ACC)

### NCAA First Round

Coach: Julie Dayton

S11	Maryland	3-1	L
S12	Delaware +	2-1	W
S15	Richmond	3-3	T
S17	<b>Radford</b>	1-0	W
S22	<b>James Madison</b>	2-0	W
S27	<b>New Hampshire</b>	3-1	W
S30	<b>Virginia Commonwealth</b>	2-1	W
O2	Massachusetts%	4-1	L
O7	Old Dominion	9-0	L
O10	Providence ^	2-1	W2OT
O11	Ohio State	3-2	W2OT
O14	<b>William &amp; Mary</b>	3-0	W
O17	Saint Joseph's	2-0	W
O18	Villanova	2-1	WOT
O21	<b>American</b>	3-1	W
O25	<b>Duke</b>	2-1	W
O31	North Carolina	6-1	L
N1	Wake Forest	4-3	WOT
N4	James Madison	3-2	W
N6	Wake Forest*	2-1	W
N7	North Carolina*	5-0	L
N12	Duke#	4-2	L

+ College Park, Md.

% Norfolk, Va.

^ Columbus, Ohio

\*ACC Tournament - Winston-Salem, N.C.

# NCAA First/Second rnds - Chapel Hill N.C.

## 1993 (10-8-0, 2-2 ACC)

Coach: Missi Sanders

S4	Iowa+	6-0	L
S5	Temple+	3-2	L
S8	<b>Richmond</b>	2-1	WOT
S14	Radford	4-0	W
S18	Syracuse^	2-1	W
S19	Princeton^	2-0	L
S21	James Madison	2-1	L
S24	<b>Maryland</b>	3-1	L
O3	<b>North Carolina</b>	3-1	L
O9	Duke	1-0	W
O13	William & Mary	2-1	WOT
O15	<b>Old Dominion</b>	2-0	L
O19	Virginia Commonwealth	3-2	WOT
O21	<b>Villanova</b>	3-0	W
O24	<b>Saint Joseph's</b>	2-1	WOT
O30	<b>Wake Forest</b>	4-0	W
N2	<b>Delaware</b>	4-2	W
N6	North Carolina*	2-0	L

+ Iowa City, Iowa ^ Princeton, N.J.

\*ACC Tournament - Winston-Salem, N.C.

## 1994 (10-11, 4-4 ACC)

Coach: Missi Sanders

S3	Ohio State	2-3	L2OT
S4	New Hampshire+	3-2	L
S7	<b>Richmond</b>	4-0	W
S11	<b>Iowa</b>	1-0	W2OT
S14	<b>Radford</b>	2-0	W
S17	Duke^	3-1	W
S18	Wake Forest %	1-0	W
S21	<b>James Madison</b>	3-1	L
S25	Old Dominion	4-1	L
S28	<b>Maryland</b>	2-1	W
O1	Duke	1-0	W
O2	North Carolina	4-0	L
O8	Saint Joseph's	1-2	LOT
O9	Villanova	1-0	W
O12	<b>Virginia Commonwealth</b>	3-0	W
O16	<b>North Carolina</b>	3-2	L
O18	<b>William &amp; Mary</b>	2-1	L
O26	<b>Princeton</b>	2-1	W
O28	at Wake Forest	2-1	L
O29	Maryland^	3-0	L
N5	<b>Maryland*</b>	1-0	L

+ Columbus, Ohio % College Park, Md.

^ Winston-Salem, N.C.

\* ACC Tournament - Charlottesville, Va.

## 1995 (13-9-0, 3-5 ACC)

### NCAA First Round

Coach: Missi Sanders

S2	<b>Davidson</b>	5-0	W
S4	<b>Miami</b>	2-0	W
S8	<b>Northeastern</b>	3-1	W
S13	Radford	4-0	W
S16	Wake Forest	3-2	WOT
S17	Appalachian State^	11-0	W
S20	James Madison	3-2	L2OT
S23	<b>North Carolina</b>	1-0	L
S24	<b>Old Dominion</b>	2-1	W2OT
S29	Maryland	1-0	L
O1	<b>Duke</b>	1-0	W
O4	William & Mary	3-2	L
O7	<b>Villanova</b>	7-0	W
O8	<b>Saint Joseph's</b>	2-1	WOT
O13	North Carolina	5-2	L
O15	Duke	2-0	L
O18	<b>Maryland</b>	3-2	L
O21	<b>Wake Forest</b>	1-0	W
O26	Virginia Commonwealth	8-0	W
O29	Richmond	3-1	W
N4	Maryland*	1-0	L
N9	Old Dominion#	2-1	LOT

^Winston-Salem, N.C.

\*ACC Tournament - College Park, Md.

# NCAA First/Second Rounds - Norfolk, Va.

## 1996 (18-5-0, 5-3 ACC)

### NCAA Quarterfinals

Coach: Missi Sanders

A31	Richmond	5-0	W
S7	Maryland	3-0	W
S11	<b>Radford</b>	8-1	W
S13	Northwestern-	4-2	W
S15	Northeastern	3-2	W
S18	<b>Davis &amp; Elkins</b>	13-0	W
S21	North Carolina	4-0	L
S25	<b>James Madison</b>	6-1	W
S28	<b>Wake Forest</b>	3-0	W
O2	<b>William &amp; Mary</b>	4-1	W
O5	Duke	2-1	W
O9	<b>Georgetown</b>	8-2	W
O12	<b>North Carolina</b>	1-0	L
O13	<b>Towson State</b>	4-0	W
O16	<b>Maryland</b>	1-0	W
O19	Wake Forest	2-0	W
O20	Davidson^	13-0	W
O27	Old Dominion	4-0	W
O30	<b>Virginia Commonwealth</b>	9-1	W
N2	<b>Duke</b>	3-2	L2OT
N9	Maryland*	1-2	L
N16	Duke#	4-1	W
N17	North Carolina#	2-1	L

- Boston, Mass.

^ Winston-Salem, N.C.

\* ACC Tournament - Durham, N.C.

# NCAA First/Second rnds - Chapel Hill, N.C.

## 1997 (19-3-0, 4-0 ACC)

### ACC Regular Season Champions

### NCAA Semifinals

Coach: Missi Sanders

A30	<b>Davidson</b>	11-0	W
A31	<b>Richmond</b>	8-0	W
S7	Ball State+	3-0	W
S13	Northwestern	2-0	W
S14	Miami	4-0	W
S17	<b>Davis &amp; Elkins</b>	9-0	W
S19	North Carolina	2-0	W
S24	<b>James Madison</b>	4-1	W
S28	<b>Old Dominion</b>	2-0	L
O1	William & Mary	3-1	W
O5	Maryland	3-2	W
O8	<b>Georgetown</b>	5-0	W
O12	<b>Saint Louis</b>	5-0	W
O16	Virginia Commonwealth	6-0	W
O19	<b>North Carolina</b>	2-1	W
O25	Wake Forest	5-2	W
O26	Appalachian State^	9-0	W
N2	<b>Duke</b>	5-1	W
N8	Duke (ot)*	2-1	W
N9	North Carolina*	2-0	L
N16	<b>Penn State#</b>	4-2	W
N21	Old Dominion!	3-2	L

+ College Park, Md.

^ Winston-Salem, N.C.

\* ACC Tournament - Chapel Hill, N.C.

# NCAA First/Second Rounds - Charlottesville, Va.

! NCAA Semifinals - Storrs, Conn.

## 1998 (18-5-0, 4-0 ACC)

### ACC Regular Season Champions

### NCAA Semifinals

Coach: Missi Sanders

A31	Richmond	5-0	W
S5	Ohio State+	3-1	W
S7	Northwestern+	3-1	W
S10	<b>Northeastern</b>	5-3	W
S12	<b>Massachusetts</b>	2-0	W
S13	<b>Appalachian State</b>	9-0	W
S16	Richmond	6-1	W
S20	North Carolina	3-0	L
S23	James Madison	2-1	L
S27	Old Dominion	4-2	L
O4	<b>Maryland</b>	3-2	W
O7	<b>Virginia Commonwealth</b>	5-1	W
O9	<b>Davidson</b>	9-0	W
O14	<b>Georgetown</b>	6-1	W
O18	<b>North Carolina</b>	2-1	W
O21	<b>William &amp; Mary</b>	2-1	W
O24	<b>Wake Forest</b>	6-0	W
O28	<b>Radford</b>	3-1	W
O31	Duke	2-1	W
N6	<b>Wake Forest*</b>	1-0	W
N8	<b>Maryland*</b>	0-1	LOT
N14	Kent#	4-2	W
N15	Maryland#	5-1	W
N20	Old Dominion!	3-0	L

+ ACC-Big Ten Challenge - Fenton, Mo.

\* ACC Tournament - Charlottesville, Va.

# NCAA First/Second Rounds - College Park, Md.

! NCAA Semifinals - Philadelphia, Pa.



# YEAR-BY-YEAR RESULTS



## 1999 (13-8-0, 1-3 ACC)

### NCAA First Round

Coach: Jessica Wilk

S4	Massachusetts	WOT	2-1
S5	Quinnipiac +	W	7-0
S10	<b>Michigan</b>	WOT	3-2
S12	<b>Towson</b>	W	9-0
S15	<b>Richmond</b>	W	2-0
S19	North Carolina	L	1-0
S23	<b>Georgetown</b>	W	6-1
S26	<b>Old Dominion</b>	LOT	3-2
S29	William & Mary	W2OT	3-2
O2	Maryland	L	3-2
O6	Virginia Commonwealth	W	4-0
O10	Yale %	W	5-0
O13	<b>James Madison</b>	L	3-2
O17	<b>North Carolina</b>	L	2-0
O20	<b>Radford</b>	W	4-2
O23	Wake Forest	L	8-1
O24	Appalachian State^	W	10-0
O31	<b>Duke</b>	WOT	3-2
N4	Duke*	W	2-0
N5	Maryland*	L	2-0
N13	Old Dominion #	L	3-0

+ Amherst, Mass. % Fairfield, Conn.

^ Winston-Salem, N.C.

\* ACC Tournament - Charlottesville, Va.

# NCAA First/Second Rounds - College Park, Md.

## 2000 (14-8-0, 1-3 ACC)

### NCAA First Round

Coach: Jessica Wilk

S3	Penn State+	L	3-1
S4	Ohio State+	W	2-0
S7	Richmond	W	3-0
<b>S8</b>	<b>Northwestern</b>	<b>W</b>	<b>2-0</b>
S17	North Carolina	L	3-1
S24	Old Dominion	L	5-1
<b>S27</b>	<b>William &amp; Mary</b>	<b>W</b>	<b>6-1</b>
<b>O1</b>	<b>Maryland</b>	<b>L</b>	<b>5-0</b>
<b>O4</b>	<b>Virginia Commonwealth</b>	<b>W</b>	<b>6-0</b>
O7	West Chester^	W	1-0
O8	Ursinus%	W	6-0
O11	<b>James Madison</b>	W	3-2
O13	<b>Georgetown</b>	W	3-1
O15	<b>North Carolina</b>	L	3-0
O18	<b>Radford</b>	W	5-0
O22	<b>Wake Forest</b>	L	3-2
O27	Duke	WOT	3-2
O28	Yale-	W	2-1
N2	Duke*	WOT	2-1
N3	North Carolina*	WPS	2-1
N5	Maryland*	L	3-0
N11	Connecticut#	L	2-1

+ ACC-Big Ten Challenge - Fenton, Mo.

^ Philadelphia, Pa. % Villanova, Pa.

- Durham, N.C.

\* ACC Tournament - College Park, Md.

# NCAA First/Second rnds - Norfolk, Va.

## 2001 (14-8-0, 2-2 ACC)

### NCAA Quarterfinals

Coach: Jessica Wilk

A31	Michigan	L	2-0
S2	Central Michigan%	W	7-1
S8	Ohio	WOT	3-2
S9	Southwest Missouri St.+	W	4-0
S19	<b>Richmond</b>	W	2-0
S23	<b>Old Dominion</b>	L	3-2
S26	Virginia Commonwealth	W	2-0
S30	Maryland	WPS	3-2
O3	William & Mary	L	2-1
O4	<b>Appalachian State</b>	W	4-0
O7	<b>Ohio State</b>	W	2-1
O10	<b>James Madison</b>	WOT	2-1
O13	<b>North Carolina</b>	L	4-1
O17	<b>Radford</b>	W	3-0
O21	Wake Forest	L	3-0
O24	Georgetown	W	5-0
O25	North Carolina	L	3-0
O28	<b>Duke</b>	WOT	2-1
N1	Duke*	W	3-1
N2	Maryland*	L	4-1
N10	Ohio State#	WOT	2-1
N11	Wake Forest#	L	5-1

% Ann Arbor, Mich. + Athens, Ohio

\* ACC Tournament - Chapel Hill, N.C.

# NCAA First/Second Rounds - Winston-Salem, N.C.

## 2002 (9-11, 0-4 ACC)

Coach: Jessica Wilk

A31	<b>Ohio</b> (o	WOT	3-2
S6	Northwestern	W	1-0
S8	Southwest Missouri St.%	W	1-0
S13	<b>William &amp; Mary</b>	W2OT	2-1
S15	James Madison	L	3-1
S18	Richmond	L	2-1
S22	North Carolina	L	3-1
S27	<b>California at Berkeley</b>	W	3-2
S29	Old Dominion	L	5-4
O2	<b>Radford</b>	W	5-0
O6	<b>Maryland</b>	L	3-2
O9	<b>Virginia Commonwealth</b>	W	2-1
O13	<b>North Carolina</b>	W	1-0
O18	Dartmouth+	L	2-1
O19	Cornell	L2OT	2-1
O23	<b>Towson</b>	W	5-1
O27	<b>Wake Forest</b>	L	2-0
N1	Duke	L	4-2
N2	Michigan ^	L	5-0
N7	Duke*	L	5-2

% Evanston, Ill. + Ithaca, N.Y. ^ Durham, N.C.

\* ACC Tournament - Durham, N.C.

## 2003 (10-10-0, 0-4 ACC)

Coach: Jessica Wilk

S1	<b>Northeastern</b>	W	4-2
S5	Princeton	L	3-1
S7	Drexel+	WOT	2-1
S10	<b>Longwood</b>	W	5-0
S12	Virginia Commonwealth	W	2-1
S17	<b>James Madison</b>	W	3-2
S21	at North Carolina	L	5-1
S24	<b>Richmond</b>	L	1-0
S28	<b>ODU</b>	L	4-1
O1	William & Mary	LOT	4-3
O4	Maryland	L	3-2
O8	<b>Radford</b>	W	4-0
O10	<b>Quinnipiac</b>	W	2-1
O12	<b>North Carolina</b>	L	6-0
O14	<b>Cornell</b>	W	4-0
O19	<b>Saint Francis</b>	W	10-0
O26	Wake Forest	L	5-1
O31	<b>Boston College</b>	W	4-3
N2	<b>Duke</b>	L	6-1
N6	<b>Maryland*</b>	L	5-1

+ Princeton, N.J.

\*ACC Tournament - Charlottesville, Va.

## 2004 (10-10-0, 0-4 ACC)

Coach: Jessica Wilk

<b>A28</b>	<b>Bucknell</b>	<b>8-2</b>	<b>W</b>
<b>A29</b>	<b>Appalachian State</b>	<b>3-0</b>	<b>W</b>
<b>S5</b>	<b>Michigan State</b>	<b>6-2</b>	<b>L</b>
<b>S6</b>	<b>Miami</b>	<b>3-2</b>	<b>WOT</b>
S10	Boston College%	4-3	W
S12	Quinnipac%	4-1	W
S15	at Richmond	2-1	L
S19	at North Carolina	4-0	L
S22	at James Madison	3-2	WOT
S26	at ODU	4-3	L
<b>S29</b>	<b>William &amp; Mary</b>	<b>5-4</b>	<b>L</b>
<b>O2</b>	<b>Maryland</b>	<b>5-0</b>	<b>L</b>
<b>O6</b>	<b>Longwood</b>	<b>8-0</b>	<b>W</b>
<b>O10</b>	<b>Princeton</b>	<b>2-1</b>	<b>W</b>
<b>O13</b>	<b>Radford</b>	<b>3-0</b>	<b>W</b>
<b>O15</b>	<b>Virginia Commonwealth</b>	<b>4-0</b>	<b>W</b>
<b>O17</b>	<b>North Carolina</b>	<b>2-1</b>	<b>L</b>
<b>O24</b>	<b>Wake Forest</b>	<b>3-2</b>	<b>L</b>
O30	at Duke	3-0	L
N4	at Wake Forest*	5-1	L

% at Bentley College - Waltham, Mass.

\* ACC Tournament - Winston-Salem, N.C.

## 2005 (8-11-0, 0-5 ACC)

Coach: Jessica Wilk

A27	at Virginia Commonwealth	3-0	W
<b>A28</b>	<b>Ball State</b>	<b>7-1</b>	<b>W</b>
S3	at ODU	4-0	L
S10	Central Michigan+	2-1	LOT
S11	at Northwestern	4-3	L2OT
<b>S16</b>	<b>James Madison</b>	<b>4-3</b>	<b>WOT</b>
<b>S18</b>	<b>Monmouth</b>	<b>5-0</b>	<b>W</b>
S21	at William & Mary	1-0	W
<b>S25</b>	<b>Boston College</b>	<b>1-0</b>	<b>L</b>
<b>S28</b>	<b>Longwood</b>	<b>3-1</b>	<b>W</b>
O1	at Maryland	4-1	L
<b>O5</b>	<b>Radford</b>	<b>2-0</b>	<b>W</b>
<b>O8</b>	<b>Penn</b>	<b>2-1</b>	<b>W</b>
<b>O16</b>	<b>North Carolina</b>	<b>3-1</b>	<b>L</b>
O19	at American	1-2	LOT
O22	at Wake Forest	1-0	L
<b>O26</b>	<b>Richmond</b>	<b>1-0</b>	<b>L</b>
<b>O30</b>	<b>Duke</b>	<b>4-0</b>	<b>L</b>
N3	Duke*	5-1	L

+ Evanston, Ill.

\* ACC Tournament - College Park, Md.

## 2006 (14-8-0, 1-4 ACC)

### NCAA First Round

Coach: Michele Madison

<b>A26</b>	<b>Indiana</b>	<b>3-2</b>	<b>W</b>
<b>S1</b>	<b>Ohio</b>	<b>3-1</b>	<b>W</b>
<b>S3</b>	<b>ODU</b>	<b>3-2</b>	<b>L</b>
<b>S6</b>	<b>Radford</b>	<b>5-0</b>	<b>W</b>
<b>S7</b>	<b>Northwestern</b>	<b>3-2</b>	<b>W</b>
<b>S15</b>	<b>VCU</b>	<b>3-1</b>	<b>W</b>
S17	at UNC	2-1	W
<b>S20</b>	<b>William &amp; Mary</b>	<b>3-1</b>	<b>W</b>
S22	at Boston College	1-0	L
S24	at Boston University	2-1	L
S27	at Richmond	5-3	W
<b>S29</b>	<b>Maryland</b>	<b>5-1</b>	<b>L</b>
<b>O5</b>	<b>Pacific</b>	<b>4-2</b>	<b>W</b>
O11	at James Madison	3-2	WOT
<b>O17</b>	<b>Longwood</b>	<b>3-0</b>	<b>W</b>
<b>O20</b>	<b>Stanford</b>	<b>3-2</b>	<b>WOT</b>
<b>O22</b>	<b>Wake Forest</b>	<b>1-2</b>	<b>LOT</b>
<b>O28</b>	<b>at Duke</b>	<b>3-1</b>	<b>L</b>
N2	Boston College*	2-1	W
N3	Maryland*	5-2	L
N11	Iowa!	1-0	W
N12	at Wake Forest!	3-2	L

\*ACC Tournament - Chapel Hill, N.C.

! NCAA First/Second Rounds -Winston-Salem, N.C.





# YEAR-BY-YEAR RESULTS



## 2007 (11-10-0, 1-4)

### NCAA First Round

Coach: Michele Madison

<b>A26 Penn State</b>	3-1	L
<b>A30 Richmond</b>	4-3	W
S2 at Old Dominion	3-1	L
S8 at New Hampshire	2-0	W
S9 at Vermont	2-1	W
<b>S14 William &amp; Mary</b>	2-1	W
<b>S16 James Madison</b>	3-1	W
<b>S22 Boston College</b>	2-1	L
<b>S23 Boston University</b>	3-0	L
S29 at Maryland	4-0	L
<b>O4 California</b>	3-0	W
O6 Rutgers%	2-1	W
O7 at Louisville	2-1	LOT
<b>O10 Radford</b>	6-1	W
<b>O14 North Carolina</b>	3-0	L
O17 at Longwood	3-1	W
O20 at Wake Forest	3-0	L
<b>O27 Duke</b>	5-3	W
N1 Boston College*	3-2	WOT
N2 North Carolina*	3-0	L
N10 Penn State!	3-2	L

% Louisville, Ky.

\* ACC Tournament - Chestnut Hill, Mass.

! NCAA First/Second Rounds - College Park, Md.

## 2008 (14-9-0, 2-3 ACC)

### NCAA Tournament

Coach: Michele Madison

<b>A29 William &amp; Mary</b>	5-0	W
<b>A31 Providence</b>	4-1	W
<b>S5 Vermont</b>	7-2	W
<b>S7 Old Dominion</b>	2-0	W
S10 at James Madison	1-0	LOT
<b>S13 Kent State</b>	4-2	W
<b>S14 Louisville</b>	4-2	W
<b>S18 VCU</b>	3-0	W
<b>S21 Ohio</b>	2-1	WOT
S26 at Boston College	2-1	W2OT
S28 vs. Boston University	3-2	LPS
<b>O1 Richmond</b>	7-1	W
<b>O4 Maryland</b>	4-3	LOT
O11 vs. Iowa%	3-2	L
O12 at Penn State	1-0	L
<b>O16 Longwood</b>	5-0	W
O18 at North Carolina	3-0	L
<b>O25 Wake Forest</b>	6-2	L
N1 at Duke	4-3	W
N6 vs. Duke*	5-2	W
N7 vs. Maryland*	3-2	LOT
N15 vs. James Madison!	2-1	W
N16 at Wake Forest!	4-3	L

% University Park, Pa.

\* ACC Tournament - Durham, N.C.

! NCAA First/Second rnds - Winston-Salem, N.C.

## 2009 (20-4-0, 3-2 ACC)

### NCAA Semifinals

Coach: Michele Madison

<b>A28 Miami (Ohio)</b>	7-0	W
<b>A30 Penn State</b>	1-0	W
S4 at Providence	2-1	W
S7 at Old Dominion	1-0	W
S11 at Kent State	8-2	W
S13 at Ohio University	5-0	W
S17 at William & Mary	4-1	W
<b>S20 Michigan State</b>	3-0	W
<b>S25 Boston University</b>	2-0	W
<b>S27 Boston College</b>	2-0	W
S30 at Richmond	4-3	W
O2 at Maryland	3-1	L
<b>O10 Cornell</b>	3-0	W
<b>O11 Wake Forest</b>	3-2	WOT
O13 at Longwood	7-0	W
<b>O17 North Carolina</b>	2-1	LOT
O24 at Wake Forest	2-0	W
<b>O31 Duke</b>	2-1	W
<b>N5 Duke*</b>	3-1	W
<b>N6 North Carolina*</b>	1-0	W
<b>N8 Maryland*</b>	3-2	LOT
<b>N14 Richmond!</b>	3-0	W
<b>N15 Michigan State!</b>	3-2	WOT
N20 vs. North Carolina#	3-2	L

\* ACC Tournament - Charlottesville, Va.

! NCAA First/Second Rounds - Charlottesville, Va.

# NCAA Semifinals - Winston-Salem, N.C.

## 2010 (18-4-0, 3-2 ACC)

### NCAA Semifinals

Coach: Michele Madison

A28 St. Joseph's	4-0	W
A29 Penn State	3-0	W
<b>S5 Old Dominion</b>	5-2	W
<b>S6 Northwestern</b>	2-0	W
S11 Ohio State	4-2	WOT
S12 Syracuse	2-1	WOT
S18 Lafayette	4-0	W
S24 Boston College	3-2	WOT
S26 Cornell	5-2	W
<b>O1 Maryland</b>	2-1	LOT
<b>O6 Longwood</b>	2-0	W
<b>O8 Princeton</b>	2-1	W
O16 North Carolina	3-2	L
<b>O18 William &amp; Mary</b>	3-0	W
<b>O23 Wake Forest</b>	4-1	W
<b>O24 Radford</b>	8-0	W
O30 Duke	2-1	W
N4 Duke*	2-1	W
N5 North Carolina*	1-0	LOT
N13 Michigan State!	3-2	WOT
N14 Princeton!	4-2	W
N19 North Carolina#	4-3	LOT

\* ACC Tournament - Winston-Salem, N.C.

! NCAA First/Second Rounds - Charlottesville, Va.

# NCAA Semifinals - Winston-Salem, N.C.

## 2011 (8-12-0, 1-4 ACC)

Coach: Michele Madison

<b>A26 VCU</b>	8-1	W
<b>A28 Penn State</b>	3-0	L
S2 vs. Towson	4-2	W
S4 at Old Dominion	4-1	L
S7 at James Madison	3-0	W
S9 at Miami (Ohio)	2-1	W
S10 vs. Michigan State	3-0	L
S17 vs. California	4-3	LOT
S18 at Northwestern	5-3	L
<b>S23 Boston College</b>	5-4	L2OT
<b>S25 Richmond</b>	3-2	W
S30 at Maryland	6-3	L
O6 vs. UC Davis	8-1	W
O7 at Princeton	2-1	L
O9 vs. Connecticut	2-1	L
<b>O5 North Carolina</b>	7-2	L
O7 at William & Mary	4-3	W
O22 at Wake Forest	5-0	L
<b>O29 Duke</b>	3-2	WPS
N3 vs. Duke*	3-2	L

\* ACC Tournament - College Park, Md.

## 2012 (16-6-0, 4-1 ACC)

### NCAA Quarterfinals

Coach: Michele Madison

A24 at Temple	4-3	WOT
A26 at Penn State	3-2	L
<b>A29 Richmond</b>	<b>6-1</b>	<b>W</b>
<b>A31 Towson</b>	<b>14-0</b>	<b>W</b>
<b>S02 Old Dominion</b>	<b>5-4</b>	<b>W</b>
S07 at Michigan State	2-1	W2OT
S08 vs Northeastern%	3-2	L
S11 at William & Mary	2-0	W
<b>S15 Miami (Ohio)</b>	<b>6-1</b>	<b>W</b>
S21 at Boston College	3-1	W
S23 vs. Boston U.^	2-0	W
<b>S28 Maryland</b>	<b>3-2</b>	<b>W</b>
<b>S30 Saint Joseph's</b>	<b>6-3</b>	<b>W</b>
<b>O06 Yale</b>	<b>4-0</b>	<b>W</b>
<b>O07 New Hampshire</b>	<b>7-0</b>	<b>W</b>
O13 at North Carolina	3-2	LOT
<b>O20 Wake Forest</b>	<b>4-0</b>	<b>W</b>
O27 at Duke	3-1	W
<b>O28 Princeton</b>	<b>2-1</b>	<b>L</b>
N02 Maryland*	5-1	L
<b>N10 Iowa!</b>	<b>3-2</b>	<b>W</b>
<b>N11 Princeton!</b>	<b>5-2</b>	<b>L</b>

% East Lansing, Mich. ^ Cambridge, Mass.

\* ACC Tournament - Chapel Hill, N.C.

! NCAA First/Second Rounds - Charlottesville, Va.



## 2013 (15-6-0, 3-3 ACC)

### NCAA First Round

Coach: Michele Madison

<b>A30</b>	<b>Louisville</b>	<b>3-2</b>	<b>W</b>
<b>S01</b>	<b>Penn State</b>	<b>4-2</b>	<b>W</b>
S06	at Yale	6-1	W
S08	at Old Dominion	5-3	W
<b>S11</b>	<b>Richmond</b>	<b>2-1</b>	<b>WSO</b>
S14	vs Maine%	2-0	W
S15	at Vermont	7-0	W
<b>S20</b>	<b>North Carolina</b>	<b>2-1</b>	<b>L</b>
<b>S22</b>	<b>Northwestern</b>	<b>2-1</b>	<b>W</b>
<b>S25</b>	<b>James Madison</b>	<b>6-1</b>	<b>W</b>
S27	at Wake Forest	3-0	W
S29	at Liberty	2-0	W
<b>O01</b>	<b>Radford</b>	<b>5-0</b>	<b>W</b>
O05	at Syracuse	4-1	L
O06	at Albany	2-1	W
<b>O11</b>	<b>Boston College</b>	<b>1-0</b>	<b>W2OT</b>
<b>O13</b>	<b>William &amp; Mary</b>	<b>2-1</b>	<b>L</b>
<b>O18</b>	<b>Duke</b>	<b>4-3</b>	<b>W</b>
O25	at Maryland	4-1	L
N07	Duke*	2-1	L
N16	Massachusetts!	3-4	LOT

% Burlington, Vt.

\* ACC Tournament - Newton, Mass.

! NCAA First Round - Durham, N.C.



## A

Kristen Aceto .....1987-88-89  
 Mary Adams (C) ..... 1983  
 Dana Anderson ..... 2002-03-04-05  
 Kara Ariza ..... 1995-96-97-98

## B

Valerie Baumann (M) .....1980  
 Emily Beach ..... 2001  
 Beth Beale (M) ..... 1976  
 Cecilia Bean (C) ..... 1975-76-77-78  
 Andrea Bear ..... 1974  
 Andrea Begel ..... 1987-88-89-90  
 Grace Beggs ..... 1980  
 Mimi Beggs ..... 1977-78-79  
 Hadley Bell ..... 2010-11-12-13  
**Tollie Bell ..... 2013**  
 Alice Bingman (M) ..... 1992  
 Sue Black (C) ..... 1978-79-80  
**Jeannie Blackwood ..... 2013**  
 Katherine Blair ..... 2003-04-05-06  
 Nancy Bloom ..... 1973  
 Liza Blue ..... 2010  
 Julianne Bojanic ..... 2001-02-03-04  
 Wendy Bortle (C) ..... 1981-82-83  
 Katherine Bounds ..... 2004-05-06-07  
 Peggy Boutilier ..... 1994-95-96-97  
 Abby Brackbill ..... 1977-78-79-80  
 Amy Breeden ..... 1981  
 Amy Breen ..... 1990  
 Allison Breininger ..... 2005  
 Fenna Breitbarth ..... 2006-07  
 Amy Broadwater ..... 1994-95-97-98  
 Amy Brockman ..... 1982-83  
**Taylor Brown ..... 2012-13**  
 Elly Buckley (C) ..... 2010-11-12-13  
 Devon Burnley ..... 2007-08  
 Juanita Buster ..... 1973

## C

Jackie Campbell ..... 1979-80-81-82  
 Lynn Campbell ..... 1982  
 Haley Carpenter (C) ..... 2007-08-09-10  
 Logan Carr ..... 2001-02-03-04  
 Cindy Carzo (C) ..... 1976-77-78-79  
 Stacey Chaplin ..... 1989-90  
 Heather Christman ..... 1988-89-90  
 Jo Anne Chopka ..... 1973-74  
 Jessica Coleman ..... 1998-99-00-01  
 Carol Compton ..... 1973  
 Sara Confer ..... 2005-06-07  
 Biffy Cornelison ..... 2003-04-05-06  
 Su Cox ..... 1975-76  
 Susan Crafts ..... 1983-84-85  
 Natalie Crane ..... 1996-97-98  
 Abby Crawford ..... 1999-00  
 Amanda Crider ..... 2010-11-12  
 Alyssa Curmaci ..... 2003-04-05-06  
 Michelle Cusimano (C) ..... 1994-95-96

## D

Kelly Daddona (C) ..... 1990-91-92-93  
 Kristen Daddona (C) ..... 1991-92-93-94  
 Sarah Darling (M) ..... 1985-86  
 Katherine Darnell (M) ..... 1984  
 Susan Day ..... 1986  
**Maddie DeCerbo ..... 2011-12-13**  
 Donna DeNoble ..... 1986-87  
 Amy Desjadon ..... 2005-06-07-08  
 Barb Deutsch ..... 1980-81-82-83  
 Sheryl Deutsch ..... 1986-87-88-89  
 Kathy Devereux ..... 1973-74-75-76  
 Heather Dow (C) ..... 1981  
 Tracy Drummond (C) ..... 1984-85-86-87  
 Jill Dunham (C) ..... 1987-88-89

## E

Amy Easter (C) ..... 1975-76  
 Shelly Edmonds ..... 2007-08-09-10  
 Margaretha Ehret ..... 2005  
 Lauren Elstein (C) ..... 2006-07-08-09  
 Meredith Elwell ..... 1996-97-98

## F

Missy Farwell ..... 1984-85  
**Emily Faught ..... 2013**  
 Donna Firer (M) ..... 1973  
 Allison Flynn ..... 2002-03-04-05  
**Caleigh Foust ..... 2013**

## G

Katie Jo Gerfen (C) ..... 2000-01-03-04  
 Leigh Giacco ..... 2005  
 Cheryl Gleason (C) ..... 1981-82-83-84  
 Heather Goehringer ..... 1989-90-91  
 Carrie Goodloe (C) ..... 1998-99-00-01  
 Jean Gordon ..... 1983  
 Wendy Graham ..... 1989-90  
 Cherie Greer ..... 1991  
 Lesley Groff ..... 1986-87-88  
 Christine Grunwald ..... 1995

## H

Ashleigh Haas ..... 2001  
 Heather Hale (C) ..... 1994-95-96  
 Elizabeth Hanks ..... 2011-12-13  
 Katherine Hansen ..... 1991  
 Erin Hayes ..... 2003-04-05-06  
 Melissa Hayes ..... 1995-96-97-98  
 Dana Henry ..... 1988  
 Mary Henry (C) ..... 1980-81-82  
 Kelli Anne Hill ..... 1999-00-01-02  
 Kaitlyn Hiltz ..... 2007-08-09-10  
 Liz Hiltz ..... 2005-06-08  
**Rebecca Holden ..... 2012**  
 Kelly Hood ..... 1993-94-96  
 Cindy Hook ..... 1973-74-75-76  
 Carmen Hoskin ..... 2005  
 Pien Hulsebosch ..... 2008  
**Lucy Hyams ..... 2013**

## I

Anne Cabot Ishon ..... 2005-06

## J

Debbie Jackson (C) ..... 1974-75  
 Alex Jahnle ..... 2008-09-10-11  
 Julie Jakum ..... 1994  
 Rachel Jennings (C) ..... 2008-09-10-11  
**Jenny Johnstone ..... 2011-12-13**  
 Elaine Jones ..... 1988-89-90-91  
 Erin Jones ..... 1996-97-98

## K

Inge Kaars Sijpesteijn (C) ..... 2006-07-08  
 Jamezetta Karickhoff (M) ..... 1976-77  
 Kim Kastuk ..... 2009-10  
**Katie Kelly ..... 2013**  
**Megan Kelly ..... 2013**  
 Tara Kelly (C) ..... 1990-91-92  
 Christie Kellam ..... 2005  
 Barbara King (C) ..... 1994  
 Katie Knapp ..... 2009  
 Britt Knouse ..... 2009-10-11-12  
 Alison Kutzer (C) ..... 1992-94-95

## L

Jennifer Landsman ..... 2000  
 Jennifer Larsen (C) ..... 1992-94-95  
 Leslie Larson ..... 1978-79-80  
 Noreen Lavan (C) ..... 1975-76-77  
 Shannon LaVigne ..... 2000-01-02-03  
**Kelsey LeBlanc ..... 2011-12-13**  
 Rebecca Lewis (C) ..... 1984-85-86-87  
 Laura Lindsay ..... 1996-97-98  
 Candy Lindsey ..... 1973-74  
 Mia Link ..... 2003-04-05-06  
 Susan Lombardi (C) ..... 1984-86-87  
 Liz Lopez ..... 1997-98  
 Cindy Lunsford ..... 1992

## M

Elaine Maddox (C) ..... 1983-84-85-86  
 Lori Mastropietro ..... 1995-96-97-98  
 Amy Marotta ..... 2004-05  
 Sharon Marsee (M) ..... 1981  
 Cynthia Mathes ..... 1988-89-90  
 Jennifer McCallum ..... 2003-04  
 Beth McGee ..... 1980-81-82  
 Patty McKenna ..... 1981-82  
 Molly McManus ..... 1999-00-01  
 Nicole McMaster ..... 1994-95-96  
 Nicole McNicol ..... 1990-91-92  
 Lucy Meyers (C) ..... 2005-06-07-08  
 Christine Miller ..... 1991-92  
 Sarah Miller (C) ..... 2002-03-04-05  
 Julia Morris (C) ..... 1976-77-78  
 Loretta Moy (M) ..... 1978  
 Jamie Mulhare ..... 2007-08

## N

Melissa Nathanson ..... 1983-84-85-86  
 Nancy Newman ..... 1973-74-75-76  
 Katie Nicholson ..... 2000-01-02-03  
 Liz Nolley ..... 1988-89  
 Robyn Nye ..... 1988-89-90





## O

Lindsay O'Bannon ..... 2003-04-05-06  
**Jess Orrett ..... 2011-12-13**  
 Ann Orrison (C) ..... 1980-81-82  
 Adrienne Ostroff ..... 2008-09-10-11

## P

Kemp Passano ..... 1977-78-79  
 Lynne Peddy ..... 1974-75  
**Macy Peebles ..... 2013**  
 Chloe Pendlebury ..... 2010-11-12-13  
 Katie Phillips (C) ..... 2002-03-04-05  
 Julie Plzak ..... 1986-87-88-89  
 Lisa Plzak ..... 1992  
 Megan Ponessa ..... 2004  
 Tara Puffenberger ..... 2009-10

## Q

Karen Quashnock (C) ..... 1973

## R

Traci Ragukas (C) ..... 2006-07-08-09  
 Francie Rawlings ..... 1981  
 Kimberly Ray ..... 1988-89-90-91  
 Claudia Reasor ..... 1973  
 Barbara Richards (C) ..... 1986-87-88  
 Julia Richardson (C) ..... 1997-98-99-00  
 Julie Robinson (C) ..... 1983-84-85  
 Katie Robinson ..... 2010-11-12-13  
 Alice Rolls ..... 1984  
 Bonnie Rosen ..... 1989-90-91  
 Sara Rosenbaum (C) ..... 1973-74  
 Amy Russell (M) ..... 1989

## S

Darlene Scott ..... 1980-81-82  
 Dru Scheifele ..... 1981-83  
 Sally Seiy ..... 2011  
 Paige Selenski ..... 2008-09-10-12  
 Lindsey Selfridge ..... 2002-03-04-05  
 Lindsey Sheehan (C) ..... 1984-85-86  
 Katelyn Slocum (C) ..... 1999-00-01-02  
 Kathy Smith (C) ..... 1974-75-76-77  
 Lane Smith ..... 2011-12-13  
 Shanna Smith (M) ..... 1989  
 Kristy Sott ..... 1997-99-00  
 Debbie Spillard (C) ..... 1977-78-79  
 Inga Stöckel ..... 2009  
 Mary Sullivan ..... 1978-79-80  
 Rachel Sumfest ..... 2011-12  
 Taylor Swezey ..... 2007-08-09-10  
 Alexandra 'Sandy' Szilassy (C) ..... 1988-89

## T

**Emilia Tapsall ..... 2013**  
**Riley Tata ..... 2013**  
 Abby Taylor ..... 2004-05-06-07  
 Meribel Taylor (M) ..... 1985-86-87  
 Meredith Thorpe ..... 1995-96-97-98  
 Shiloh Trianna ..... 2006  
 Jenny Turner ..... 1974

## U

Cara Unterkofler ..... 1999-00-01-02

## V

Charlotte van den Broek ..... 2009  
 Kiersten van Hooser ..... 2000-01  
 Boyd Vicars ..... 2007-09-10  
 Carissa Vittese ..... 2010-11-12-13  
 Michelle Vittese ..... 2008-09-10-12  
 Lorraine Vizzuso ..... 1997-98-99-00  
 Michelle Vizzuso ..... 1995-96-97-98  
 Floor Vogels ..... 2008-09  
 Kelsey Vonier ..... 2006-07

## W

Gretta Wahlstron (C) ..... 1979-80  
 Carole Wagner ..... 1983-84-85  
 Rosemary Walker ..... 1999-00-01-02  
 Merrell Wall ..... 1974-75-76-77  
 Heidi Waterman (C) ..... 1991-92-94  
 Ann Watkins ..... 1974  
 Sarah Weber ..... 2011-12-13  
 Julie Wells ..... 1977-78-79  
 Allison West (C) ..... 1994-95-96-97  
 Frances West (C) ..... 1996-97-98  
 Denise Wernersbach (C) ..... 1991-92  
 Natalie Wheatall ..... 1982-83-84-85  
 Emily White ..... 1999-00-01-02  
 Jessica White ..... 2011-12  
 Mason White ..... 1998-99-00-01  
 Tracy Whitehurst (C) ..... 1985-86-87-88  
 Ellen Wiese ..... 1996-97-98  
 Rebecca Wilbricht ..... 2000-01  
 Susan Williams (C) ..... 1985-86-87-88  
 Phoebe Willis ..... 2010-11-12