



VIRGINIA

2013 FIELD HOCKEY



Uncompromised Excellence

VirginiaSports.com
Twitter.com/UVAFieldHockey



TABLE OF CONTENTS

<i>Pages</i>	<i>Content</i>
2	2013 Roster/Pronunciation Guide
3-4.....	Head Coach Michele Madison
5	Assistant Coaches/Support Staff
6-14.....	2013 Player Bios
15	2012 Final Statistics and Results
16-18.....	Cavalier Program Records
19	Cavaliers and USA Field Hockey
20-22.....	Honors and Awards
23-24.....	Academic Accolades
25	Series Records
26-31.....	Year-by-Year Results
32-33.....	All-Time Letterwinners

MEDIA INFORMATION

Melissa Dudek

Assistant Athletics Media Relations Director, Field Hockey Contact

Phone: (434) 962-0579

Email: mdudek@virginia.edu

2013 SCHEDULE

Aug. 30	LOUISVILLE	6 p.m.
Sept. 1	PENN STATE	1 p.m.
Sept. 6	@ Yale	2 p.m.
Sept. 8	@ Old Dominion	1 p.m.
Sept. 11	RICHMOND	6 p.m.
Sept. 14	vs. Maine ¹	11:30 a.m.
Sept. 15	@ Vermont ¹	12 p.m.
Sept. 20	NORTH CAROLINA*	6 p.m.
Sept. 22	NORTHWESTERN	1 p.m.
Sept. 25	JAMES MADISON	6 p.m.
Sept. 27	@ Wake Forest*	6 p.m.
Sept. 29	@ Liberty	2 p.m.
Oct. 1	RADFORD	6 p.m.
Oct. 5	@ Syracuse*	12 p.m.
Oct. 6	@ Albany	2 p.m.
Oct. 11	BOSTON COLLEGE*	6 p.m.
Oct. 13	WILLIAM & MARY	1 p.m.
	<i>BC vs Longwood</i>	<i>3 p.m.</i>
Oct. 18	DUKE* (Senior Game)	6 p.m.
Oct. 25	@ Maryland*	6 p.m.
Nov. 7-10	ACC Championship ²	TBA
Nov. 16-17	NCAA First/Second Rounds	TBA
Nov. 22-24	NCAA Semifinals/Finals ³	TBA

¹ The Sheraton Classic - Burlington, Vt.

² at Boston College - Newton, Mass.

⁴ at Powhatan Sports Complex - Norfolk, Va.

* ACC Game | All Times Eastern Time

2013 ACC PRESEASON POLL

Team	Points	2012 Record
1. North Carolina (6)	36	23-2, 5-0
2. Maryland (1)	31	17-7, 3-2
3. Duke	23	7-11, 0-5
4. Syracuse	22	19-3, 6-0
5. Wake Forest	15	9-11, 1-4
6. Virginia	13	16-6, 4-1
7. Boston College	7	10-9, 2-3

2013 PRESEASON ALL-ACC TEAM

Emma Plasteras	Junior	Midfield	Boston College
Paula Heimbach	Senior	Defense	Duke
Ali McEvoy	Senior	Defense	Maryland
Jill Witmer	Senior	Forward	Maryland
Maxine Fluharty	Junior	Midfield/Forward	Maryland
Charlotte Craddock	Junior	Forward	North Carolina
Emily Wold	Sophomore	Midfield/Back	North Carolina
Laura Hahnefeldt	Senior	Back	Syracuse
Elly Buckley	Senior	Forward	Virginia
Jenny Johnstone	Junior	Goalkeeper	Virginia
Anna Kozniuk	Junior	Back/Midfield	Wake Forest

2013 PRESEASON NFHCA POLL

Institution	Total Points
1. University of North Carolina	978 (33)
2. University of Maryland	903 (8)
3. Princeton University	883 (9)
4. University of Connecticut	749
5. Syracuse University	737
6. Penn State University	686
7. University of Virginia	629
8. Old Dominion University	589
9. University of Michigan	494
10. Duke University	486
11. Northwestern University	428
12. Stanford University	382
13. University of Iowa	344
14. University of Massachusetts	251
15. Northeastern University	226
16. Boston University	212
17. Drexel University	188
18. Wake Forest University	163
19. Boston College	146
20. University of New Hampshire	132



2013 VIRGINIA FIELD HOCKEY ROSTER



No.	Name	Pos.	Ht.	Yr.	Hometown (Previous School)
1	Jenny Johnstone	GK	5-6	Jr.	Paisley, Scotland/The High School of Glasgow
2	Katie Kelly	F/M	5-7	Fr.	Phoenixville, Pa./Archbishop Carroll
3	Jess Orrett	M	5-4	Jr.	Wells, Somerset, England/Millifield School
4	Maddie DeCerbo	B	5-5	Jr.	Surf City, N.J./Southern Regional
5	Caleigh Foust	F	5-5	Fr.	Bryn Mawr, Pa./Harriton
6	Tollie Bell	M	5-5	Jr.	Norfolk, Va./Maury/North Carolina
7	Taylor Brown	F	5-3	So.	Charlottesville, Va./The Covenant School
8	Carissa Vittese	B	5-6	Sr.	Cherry Hill, N.J./Camden Catholic
9	Macy Peebles	M	5-4	Fr.	Yorktown, Va./Tabb
10	Emilia Tapsall	M	5-5	Fr.	Old Greenwich, Conn./Greenwich Academy
11	Lucy Hyams	M	5-6	Fr.	Whitstable, Kent, England/Kent College
12	Elizabeth Hanks	F	5-5	Sr.	Hummelstown, Pa./Hershey
13	Kelsey LeBlanc	M	5-1	Jr.	Haverford, Pa./Haverford
14	Emily Faught	B	5-7	Fr.	Newtown Square, Pa./Academy of Notre Dame
16	Lane Smith	B	5-10	Sr.	Ottawa Hills, Ohio/Ottawa Hills
17	Hadley Bell	M	5-9	Sr.	Shaker Heights, Ohio/Hathaway Brown
18	Elly Buckley	F	5-11	Sr.	Scarborough, Perth, Australia/John XXIII College
19	Chloe Pendlebury	B	5-8	Sr.	Perth, Australia/Murdoch University
20	Sarah Weber	F/M	5-7	Sr.	Moorestown, N.J./Moorestown
21	Riley Tata	F	5-7	Fr.	Virginia Beach, Va./Norfolk Academy
22	Megan Kelly	M/F	5-7	Fr.	Phoenixville, Pa./Archbishop Carroll
23	Jeannie Blackwood	M	5-7	Fr.	Virginia Beach, Va./Frank W. Cox
24	Katie Robinson	M	5-1	Sr.	Mount Joy, Pa./Donegal
98	Rebecca Holden	GK	5-2	So.	Fishing Creek, N.J./Lower Cape May

Head Coach: Michele Madison, eighth season (Rutgers, 1984)
Assistant Coaches: Shawn Hindy, first season (San Diego State, 2004)
 Annie Zinkavich, second season (Penn State, 2004)
Athletic Trainer: Colby Mangum

PRONUNCIATION GUIDE		
5	Caleigh Foust	CAL-ee (like California)
9	Carissa Vittese	Va-TEECE
13	Kelsey LeBlanc	LUH-Blahnk
14	Emily Faught	FOUGHT
21	Riley Tata	TAY-tuh
	Annie Zinkavich	zin-KAY-vich



Head coach Michele Madison has spent seven seasons at the helm of the Cavalier field hockey program, leading UVa to six NCAA Tournament berths, including national semifinals appearances in 2009 and 2010.

In July of 2013, the National Field Hockey Coaches Association announced that Madison will be inducted into the Zag Field Hockey/NFHCA Hall of Fame during the 2013 NFHCA Annual Convention being held Nov. 20-22 in Virginia Beach, Va. Madison is the first Virginia coach to be inducted into the NFHCA Hall of Fame. Since 2000 when the organization announced its initial Hall of Fame class, the coaches' association has honored 54 individuals, including Madison and two other 2013 inductees.

Madison hit two career benchmarks during the 2012 season. She won the 300th game of her career with the Cavaliers' 5-4 victory over No. 3 Old Dominion on Sept. 2, becoming just the 26th head coach in NCAA Division I history to hit the 300-win mark. Madison currently ranks ninth among active coaches in career wins. She also had her 100th win at Virginia with the Cavaliers 3-2 victory over Iowa in the first round of the NCAA Tournament, tying her for second place on the Cavalier career victories list.

Madison was named the 2012 Coach of the Year in honors announced by the Virginia Sports Information Directors (VaSID), her fourth time winning the honor.

Two of Madison's All-Americans at Virginia, Paige Selenski and Michelle Vittese, helped the U.S. National Team to its first gold medal at the Pan American Games in October 2011. Vittese, the 2012 USA Field Hockey Player of the year, and Selenski also competed with the US squad at the 2012 London Olympics.

Madison led the Cavaliers back to the NCAA Tournament in 2012 after missing out in 2011. Not only did Virginia earn a berth, they had the privilege of hosting the first and second round games. After a victory over Iowa in the first round, UVa fell in the second round to eventual national champion Princeton.

2012 saw a rewriting of the record book as Selenski became both the Virginia and the ACC career points leader. Selenski also scored the 100th goal of her career in the NCAA first round tournament game against Iowa, becoming just the tenth player in NCAA history and the second in the ACC and at UVa to score 100 career goals. She became a four-time All-American and was just the ninth player in ACC history to earn All-Conference honors four times. Vittese and Elly Buckley earned their third All-American honors.

Of the ten players to score 100 or more goals in NCAA history, Madison recruited two of them. In addition to Selenski, Madison also signed Kristy Gleason (1989-93) at Iowa. Gleason finished her career ranked third in the NCAA record book with 132 goals for the Hawkeyes.

The Cavaliers advanced the NCAA semifinals in 2010 after beating Michigan State (3-2 in overtime) and Princeton (4-2) to join Maryland, North Carolina and Ohio State in the national semifinals. Virginia finished the season ranked No. 3 by the National Field Hockey Coaches Association.

Virginia made its third trip to the NCAA semifinals in 2009 under Madison, defeating Richmond and Michigan State (in overtime) en route to a final four berth. The Cavaliers also advanced to the championship game of the ACC Tournament, playing for the conference title on their home field. The team set records for wins (20) and games played (24) in a season.

Madison, a member of the NCAA National Field Hockey Committee, is in her 25th overall season as a collegiate head coach. She is the only person to take three different Division I programs (Temple, Michigan State and Virginia) to the NCAA Tournament and her teams have consistently been ranked in the top-10 at various times of the past decade. In addition to her experience in the college ranks, Madison also is the only active Division I head coach to be a part of two United States Olympic staffs, having assisted the 1988 Olympic Team in Seoul and served as the head goalkeeper coach with the 1996 squad in Atlanta.

UVa's Paige Selenski and Michelle Vittese were both named to the United States National Team in the summer of 2010 and earned their



MADISON'S COACHING RECORD

Year	School	Record	Postseason
1989	Temple	12-8-2	
1990	Temple	18-6-0	NCAA Quarterfinals
1991	Temple	15-6-2	NCAA Quarterfinals A-10 Tournament Champions
1992	Temple	11-8-2	NCAA First Round
1993	Michigan State	6-13-0	
1994	Michigan State	4-14-2	
1995	Michigan State	8-12-0	
1996	Michigan State	12-9-0	
1997	Michigan State	11-10-0	
1998	Michigan State	8-12-0	
1999	Michigan State	9-11-0	
2000	Michigan State	11-9-0	
2001	Michigan State	16-6-0	NCAA Quarterfinals Big Ten Champions
2002	Michigan State	23-3-0	NCAA Semifinals Big Ten Tournament Champions
2003	Michigan State	17-5-0	NCAA Quarterfinals Big Ten Champions Big Ten Tournament Champions
2004	Michigan State	18-4-0	NCAA Semifinals Big Ten Champions
2005	Michigan State	12-8-0	
2006	Virginia	14-8-0	NCAA Quarterfinals
2007	Virginia	11-10-0	NCAA First Round
2008	Virginia	14-9-0	NCAA Quarterfinals
2009	Virginia	20-4	NCAA Semifinals
2010	Virginia	18-4	NCAA Semifinals
2011	Virginia	8-12	
2012	Virginia	16-6	NCAA Second Round
Totals	24 seasons	312-197-8	13 NCAA Tournament Appearances



first international caps in matches with the English and Irish national teams that summer.

Selenski and Vittese were each named first-team All-Americans by the NFHCA in 2010 and teammate Elly Buckley was a third-team honoree, marking the second consecutive year three Cavaliers earned the distinction of All-American. Additionally, Virginia placed seven student-athletes on the all-region team, including a school record four first-team members (Buckley, Selenski, Vittese and Rachel Jennings). Buckley was also selected to the national all-rookie team, named by *womensfieldhockey.com*, becoming the sixth Virginia named to the squad under Madison.

In 2009, three Cavaliers were named NFHCA All-Americans, including Selenski (first team), Inga Stockel (second team) and Vittese (third team) Selenski, a two-time Honda Award semifinalist, joined Stockel and Vittese on the All-ACC team. For the second straight year, Virginia put five members on the all-region squad and Charlotte van den Broek was honored as part of the national all-rookie team.

During the 2008 campaign, Virginia returned to the quarterfinals of the NCAA Tournament and freshman Paige Selenski made program history, becoming the first Cavalier to be named the National Rookie of the Year. UVa finished the season with a No. 12 ranking, had two All-Americans and All-ACC selections in senior Inge Kaars Sijpesteijn and Selenski, and had five team members picking up all-region honors, with freshmen Michelle Vittese and Floor Vogels as well as junior Traci Ragukas joining Kaars Sijpesteijn and Selenski. Virginia also continued to put at least one member on the national all-rookie team for the third time in program history. Selenski and Vittese, who both represented the United States at the Junior World Cup in Boston, were named to the squad.

In 2007, Madison helped lead Virginia to its second straight NCAA Tournament appearance. UVa was ranked eighth in the nation to start the year, and Ragukas and Kaars Sijpesteijn were both named to the NFHCA second-team all-region squad. Kaars Sijpesteijn additionally received All-America and All-ACC honors for the second consecutive season. Also for the second straight year, Virginia had a member selected to the National All-Rookie squad in first-year Shelly Edmonds.

In her first year in Charlottesville, Madison orchestrated Virginia's return to the top-10 and was named the 2006 National Coach of the Year by *womensfieldhockey.com*. That year, Virginia rose to as high as No. 4 in the nation and advanced to the quarterfinals of the NCAA Tournament before ending the season with a 14-8 record against the nation's fifth-toughest schedule. Madison coached Kaars Sijpesteijn to first-team All-America honors, Virginia's first first-team All-American since 1998. She also mentored Ragukas to National Rookie Team recognition, the first such honor for a Cavalier in school history.

The former head coach at Michigan State from 1993-2005, Madison led the Spartans to their first-ever No. 1 ranking. Michigan State advanced to the NCAA Tournament four times, including two NCAA semifinal berths (2002, 2004) and two quarterfinal appearances (2001, 2003) during her tenure in East Lansing. Madison, named the 2001 Big Ten Coach of the Year, also guided the Spartans to back-to-back conference titles in 2001 and 2002. During the 2002 season, she picked up another coaching honor, being tabbed the the West Region Coach of the Year. Madison left Michigan State as the school's all-time leader in victories.



The Philadelphia native spent four seasons as the head coach at Temple prior to her appointment at Michigan State. At Temple, she took the team to national championship contention in just her second year at the helm. During Madison's tenure, the Owls compiled a 53-27-6 record and appeared in three NCAA Tournaments, twice advancing to the quarterfinals. Temple also won the A-10 Conference Tournament Championship in 1991.

Madison additionally served a two-year (1989-90) stint as the assistant coach for the Owl women's lacrosse team that advanced to the NCAA Semifinals both seasons. During her stay in Philadelphia, Madison coached 12 All-Americans, 21 all-region selections, three Academic All-Americans, two National Team members and one Honda Broderick Award winner.

Prior to her position at Temple, Madison served as an assistant coach at Iowa for seven seasons (1982-89). During that span, the Hawkeyes advanced to the Final Four four times and captured their only NCAA championship title in 1986.

A former member of the U.S. Field Hockey Board of Directors and the United States Field Hockey Foundation, Madison has been integrally involved in the U.S. Field Hockey community. In addition to her stint with the 1988 and 1996 Olympic Teams, she was an assistant coach at the 1994 World Cup in which the United States won the bronze, their highest finish in history.

She also served as a notational analyst for the 1998 World Cup in Utrecht for England. Madison, who spent two and a half years on the coaching staff for the U.S. National Team, served as head coach on the 2003 U.S. Under-20 team, after coaching at the prestigious "A" camp for the U.S. Junior National Team trials. In the spring of 2002, Madison assisted the U.S. National Team at the Champions Challenge in South Africa. In the summer of 2005, Madison was named to the USFHA Board of Directors and was part of the advisory committee that made the decision to hire Terry Walsh, the Technical Director of High Performance for USA Field Hockey.

Madison has also coached the Midwest Cyclones of the United Airlines Field Hockey League, leading the team to runner-up finishes in the championship game in 2000 and 2001.

Madison is a 1982 physical education graduate of Rutgers University, where she played field hockey and lacrosse. She earned her master's degree in athletic administration from Iowa in 1984. Madison was inducted into the Gloucester County (N.J.) Hall of Fame in 1993 and the Williamstown (N.J.) High School Hall of Fame in 1992.





Annie Zinkavich joined the Virginia field hockey staff in February 2012. This will be her second season coaching the UVa goalkeepers and spearheads all recruiting efforts. She also is in charge of alumni outreach efforts.

In her first season with the Cavaliers, she helped mentor sophomore goalkeeper Jenny Johnstone to earning All-ACC honors.

Zinkavich arrived in Charlottesville after spending the previous six seasons as an assistant coach at her alma mater, Penn State. With the Nittany Lions, she worked primarily with the goalkeepers and assisted in the day-to-day operations of the program.

Zinkavich helped Penn State to five NCAA Tournament appearances and coached the Nittany Lions in the 2007 national championship game. During her time there, she also mentored the goalkeepers to three first team All-Big Ten and four All-America honors. Penn State won the Big Ten regular season title in 2009 and claimed the tournament championship in 2011.

Prior to her return to Penn State, Zinkavich spent two years at Bucknell where she served as a graduate assistant coach. Under her guidance, senior goalkeeper Liz Jordan was named the Patriot League's goalkeeper of the year.

Zinkavich, a goalkeeper, played four seasons at Penn State (2000-03) where she was a three-time NFHCA All-Midwest regional selection and helped the Nittany Lions to the national title game in 2002. She was also selected to the senior all-star game in 2003.

Zinkavich received her bachelor's degree in psychology from Penn State in 2004. A native of Kingston, Pa., she was inducted into the Wyoming Seminary Hall of Fame in 2011.



Shawn Hindy a former US National Field Hockey team member and a former US National Indoor Field Hockey team member, joined the Virginia field hockey staff in July 2013.

Hindy was a three-time USFHA Field Hockey Player of the Year while playing for the United States Men's National Field Hockey Team from 1995-2007. He served as captain from 2001-04 and has played in more than 60 international matches for the United States including participating in the 1999 Pan American Games and the 2000 Americas Cup. From 2002-12, he was a member of the United States Men's National Indoor Field Hockey Team, playing in the 2003 World Cup in Germany and the 2011 World Cup in Poland.

From 2007-2010, Hindy was the head coach of the United States Women's Indoor National Field Hockey Team. In November of 2008, he led his squad to a Silver Medal at the Pan-American Cup Indoor Tournament in Argentina.

Hindy was an assistant coach at Michigan State for the 2011 and 2012 seasons. He previously served as an assistant field hockey coach at Radford University from 2004-06 while also working towards receiving his MBA.

Prior to his time at MSU, Hindy coached at Lehighon High School, serving as the head field hockey coach as well as the athletic director for the Pennsylvania school from 2006-10. He led the LHS field hockey team to a State Championship title in 2009, which was the first State Championship of any sport in the history of the school. He won four district championships, four league championships and advanced to the state playoffs all five years as a head coach. Hindy compiled a 110-12-1 record in his coaching tenure, including a perfect 26-0 in 2009. In four years, the coach sent 25 players to play NCAA field hockey around the nation. In 2010, Hindy was named the NFHCA Mideast (Pennsylvania) Coach of the Year.

Hindy is a member of the USAFH Board of Directors, serving on the USA Field Hockey Advancement Committee and also being named an alternate for the USOC Athlete Advisory Council.

He earned a Bachelor's Degree in Financial Services with a minor in Spanish from San Diego State University in May of 2004.



SUPPORT STAFF

Colby Mangum Athletic Trainer (Grad Assistant)
 Blair Putnam Athletic Trainer (Mentor)
 Ryan Telford Strength & Conditioning Coach

Jim Bauman Sports Psychologist
 Kristina Bethea Academic Affairs
 Kelly Rossi Nutritionist
 Kate Martin Game Operations
 Greg Driscoll Director of Marketing
 Melissa Dudek Media Relations
 John Truslow Equipment



#1 JENNY JOHNSTONE

JUNIOR • 5-6 • GOALKEEPER
PAISLEY, SCOTLAND
THE HIGH SCHOOL OF GLASGOW



2012

- Longstreth/NFHCA Division I All-South Region first team
- All-ACC goalkeeper
- All-VaSID first team
- 2012 Gladiator by SGI/NFHCA National Academic Squad
- 2012 All-Atlantic Coast Conference Academic Field Hockey Team
- Led the ACC in save percentage most of the season
- Ranked among the nation's top goalkeepers in goals-against average and save percentage most of the season
- Finished the year with a 1.9 GAA (34th in the NCAA) and 72.0 save percentage (42nd)
- 13-5 record with two shutouts and taking part in three more team combined shutouts
- Allowed 33 goals with 85 saves
- Earned her first shutout of the season in the 2-0 victory over Boston University (Sept. 21)
- Logged five saves in the 2-1 double overtime victory at No. 20 Michigan State (Sept. 7)
- Had six saves in the 3-2 win against No. 4 Maryland (Sept. 28)
- Had a season-high 11 saves at North Carolina (Oct. 13)
- Logged nine saves in both games against Princeton (Oct. 28 and Nov. 11)
- Played all 70 minutes in the NCAA Tournament win over Iowa, logging three saves and allowing two goals
- Preseason All-ACC selection

2011

- Played in all 20 games with 18 starts
- Ended the year with a 7-12-0 record
- Finished the year with 84 saves and a .618 save percentage
- Also tallied a 3.78 goals against average mark
- Recorded first career shutout at James Madison (Sept. 7)
- Tallied career-best 14 saves vs. Duke (Oct. 29) en route to winning ACC Player of the Week honors
- Had seven saves vs. Penn State (Aug. 28) and at Maryland (Sept. 30)

International/National

- 33 international caps while representing her native Scotland
- Currently training with the U-21 National Team
- Represented U-16, U-17 and U-18 Scotland squads

High School

- Runners-up in the International School Girls Cup
- Awarded school merits and colours on three occasions
- Helped team to West District runners-up or championship finishes three times
- 2010 West District indoor champions
- Placed second in the Scottish School Rankings
- Served as team captain

Personal

- Daughter of Chris and Anne Johnstone
- Has two brothers, Alasdair and Matthew, and a sister, Kirsty
- Environmental Science major

JOHNSTONE'S CAREER STATISTICS

Year	GP/GS	Min	Saves	GA	Save %	GAA	SO
2011	20/18	1237:51	84	52	.618	3.78	1
2012	20/17	1214:28	85	33	.720	1.90	2
Totals	40/35	2452:19	169	85	.665	2.43	3

#2 KATIE KELLY

FRESHMAN • 5-7 • FORWARD/ MID
PHOENIXVILLE, PA.
ARCHBISHOP CARROLL



High School

- Four-year varsity field hockey player at Archbishop Carroll High School
- Two-time first team All-State (Pennsylvania), 2011-12
- 2012 first team All-Southeastern Pennsylvania
- 2012 Academic All-State
- Three-time first team All-Catholic (2010-12)
- Two-time first team All-Main Line and first team All-Delaware County (2011-12)
- 2011-13 Futures Elite, including playing in the 2012 Futures Elite Championship
- 2011 Junior National Indoor Team
- 2011 AAU Junior Olympics
- Toured China in 2012, playing in the Chinese National Youth Hockey U19 Championships, finishing in second place
- Also played lacrosse (midfield) at ACHS
- Member of the National Honor Society

Personal

- Daughter of Joe & Gina Kelly
- Has a twin sister, Megan, who also will be playing on the Cavalier field hockey team
- Volunteered with Best Buddies, Cystic Fibrosis Foundation "Wishes and Dreams" Gala, and Fox Chase Cancer Center "Paws for a Cause"
- Enjoys skiing and baking



#3 JESS ORRETT

**JUNIOR • 5-4 • MIDFIELDER
WELLA, SOMERSET, ENGLAND
MILLIFIELD SCHOOL**



2012

- Appeared in all 22 games with 16 starts
- Scored her lone goal of the season vs. New Hampshire (Oct. 7)
- Logged assists in back-to-back games against Saint Joseph's (Sept. 30) and Yale (Oct. 6)
- Had an assist in the NCAA Tournament second round game against Princeton
- Took a season-high three shots in the season opener at Temple
- Also had an assist against Penn State (Aug. 26) and Towson (Sept. 2)

2011

- Started all 20 games as a freshman
- Tallied four goals and four assists for 12 points
- Took 27 shots
- Recorded first career goal and assist in first collegiate game vs. VCU
- Also scored against Towson (Sept. 2), Maryland (Sept. 30) and William & Mary (Oct. 17)

International/National

- Member of the English U-16 and U-18 national teams

High School

- First team English National League selection
- Led squad to national finalist finishes in both indoor and outdoor leagues
- Served as team captain

Personal

- Undeclared major

ORRETT'S CAREER STATISTICS

Year	GP/GS	Shots	Goals	Assists	Points	DS
2011	20/20	27	4	4	12	0
2012	22/16	7	1	5	7	0
Totals	42/36	34	5	9	19	0

#4 MADDIE DECERBO

**JUNIOR • 5-5 • BACK
SURF CITY, N.J.
SOUTHERN REGIONAL HIGH SCHOOL**



2012

- 2012 All-Atlantic Coast Conference Academic Field Hockey Team
- Started all 22 games in the backfield
- Logged a defensive save at William & Mary (Sept. 11)

2011

- Played in all 20 games with 19 starts in the backfield as a freshman
- Recorded first career defensive save at Northwestern (Sept. 18)

High School

- 2010 Ocean County Player of the Year
- 2010 First Team All-Shore Conference and All-Group 4
- 2008 and 2009 Second Team All-Shore Conference
- Three-time First Team All-Ocean County
- Five-time participant in National Futures Championships
- Member of the New Jersey Junior High Performance team
- Two-time participant in Junior National Camp

Personal

- Daughter of Michael and Marcy DeCerbero
- Has two older sisters, Lauren and Alex
- Sister, Lauren, played field hockey at Rutgers
- Sister, Alex, was a member of the cheerleading team at Stockton College
- Undeclared major

DECERBO'S CAREER STATISTICS

Year	GP/GS	Shots	Goals	Assists	Points	DS
2011	20/19	0	0	0	0	1
2012	22/22	0	0	0	0	1
Totals	42/41	0	0	0	0	2

#5 CALEIGH FOUST

**FRESHMAN • 5-5 • FORWARD
BRYN MAWR, PA.
HARRITON HIGH SCHOOL**



High School

- Four-year varsity field hockey player at Harriton High School
- Two-time First Team All-Central League
- Two-time MVP
- Also played lacrosse at HHS (midfield)
- All-American in lacrosse
- First team All-Central league in lacrosse and team MVP junior year
- National Honor Society member

Personal

- Daughter of Lorie and Mark Foust
- Has an older brother, Shane, a younger brother, Brandon, and a younger sister Alexa
- Sang in the church choir from ages 9-16
- Undeclared major

#6 TOLLIE BELL

**JUNIOR • 5-5 • FORWARD
NORFOLK, VA.
MAURY HIGH SCHOOL**



2012

Sat out the 2012 season after transferring from North Carolina

2011

- Redshirted at North Carolina



HIGH SCHOOL

- At Maury High School in Norfolk, served as team captain as a senior and was selected team MVP
- 2010 Eastern District Player of the Year
- Three-time all-state, all-region and all-district honoree (sophomore through senior years)
- Three-time member of the Virginian-Pilot All-Star team
- Top scorer in the nation in 2008 with 42 goals and totaled more than 100 in her career
- Helped her team to four district championships
- Played soccer until 10th grade
- Named 2011 U.S. Army Reserve Scholar-Athlete of the Year
- National Futures Tournament qualifier 2008-11
- Attended Futures Development Elite Camp in 2011
- Gold medalist at 2009 Junior Olympics
- Gold medalist at 2011 National Indoor Tournament and 2010 National Hockey Festival

PERSONAL

- Full name is Tolliver Anne Bell
- Parents are Susan and George Nottingham and Rock and Karen Bell
- Has four siblings.
- Undeclared major

#7 TAYLOR BROWN

SOPHOMORE • 5-3 • FORWARD
CHARLOTTESVILLE, VA.
THE COVENANT SCHOOL



2012

- Played in all 22 games with six starts
- Recorded first career goal vs. Yale (Oct. 6)
- Had an assist against Richmond (Aug. 29)
- Took a season-high three shots (two on-goal) against Saint Joseph's (Sept. 30)
- Scored a goal in the exhibition game against the US U-21 squad

High School

- Three-time VISAA all-state selection
- 2010 VISAA Division II Player of the Year
- Three-time all-state tournament team
- Four-time All-League of Independent Schools honoree
- Led Covenant in scoring for three seasons
- Two-time Futures Elite selection
- Played on Field Hockey Life club team
- Served as team captain
- Honor Roll member
- Also played lacrosse

Personal

- Daughter of Todd and Nicole Brown
- Has a younger brother, Hunter
- Undeclared major

BROWN'S CAREER STATISTICS

Year	GP/GS	Shots	Goals	Assists	Points	DS
2012	22/6	12	1	1	3	0
Totals	22/6	12	1	1	3	0

#8 CARISSA VITTESE

SENIOR • 5-6 • BACK
CHERRY HILL, N.J.
CAMDEN CATHOLIC HIGH SCHOOL



2012

- Longstreth/NFHCA Division I All-South Region second team
- Played in all 22 games with 16 starts
- Scored a goal in four straight games at No. 9 Penn State (Aug. 26), and then home games against Richmond (Aug. 29), Towson (Aug. 31) and No. 3 Old Dominion (Sept. 2)
- Also registered an assist against Old Dominion, giving her a season-high three points in the game

2011

- Played in all 20 games with 14 starts
- Notched six goals
- A perfect 5-for-5 in penalty strokes
- Also contributed three assists for 15 points
- Finished the year with 19 shots, including 13 on goal
- First career goal game on a stroke in the season opener against VCU (Aug. 26)
- Also scored during regulation at Old Dominion (Sept. 4)
- Converted two penalty strokes, including one in the final minute to send game to overtime vs. Boston College (Sept. 23)
- Also converted stroke opportunities at James Madison (Sept. 7) and vs. UC Davis (Oct. 6)

2010

- Played in 19 games with 12 starts as a rookie, including all three NCAA games
- Started the year up front but moved to the backfield and became key member of the Virginia defense
- Recorded a defensive save at home vs. Maryland (Oct. 1)
- Tallied one shot

International/National

- Played with Mid Atlantic Team at 2011 Junior National Championships
- Named to 2009-10 Olympic Development Squad
- 2009 Futures Elite selection

High School

- 2009 second team All-South Jersey
- 2009 first team all-conference and all-parochial
- Named team's most valuable player
- Served as team captain
- Also competed in lacrosse
- National Honor Society, National Science Honor Society and National Math Honor Society member

Personal

- Daughter of Mark and Patricia Vittese
- Has two sisters: Michelle and Tara
- Sister, Michelle, was a four-year member of the UVa field hockey team and a current member of the U.S. national team
- Psychology major

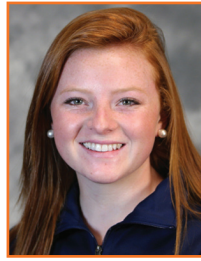
C VITTESE'S CAREER STATISTICS

Year	GP/GS	Shots	Goals	Assists	Points	DS
2010	19/12	1	0	0	0	1
2011	20/14	19	6	3	15	0
2012	22/16	29	4	1	9	0
Totals	61/42	49	10	4	24	1



#9 MACY PEEBLES

FRESHMAN • 5-4 • MIDFIELD
YORKTOWN, VA.
TABB HIGH SCHOOL



High School

- In her four years at Tabb High School, won three state championships and had one runner-up finish
- 2012 State Player of the Year (Virginia)
- 2012 Harrow Sports/NFHCA High School second team All-American
- 2012 Harrow Sports/NFHCA High School All-South Region
- Three-time first team All-State honoree (2010-12)
- 2012 Daily Press Player of the Year
- 2008-10 Futures Elite
- Also played club soccer for 10 years and was a cheerleader for two years
- Member of the National Honor Society and the Scroll and Quill Honor Society
- Editor-in-Chief of her high school newspaper

Personal

- Mother, Karen Fallon, played tennis at the US Naval Academy
- Father, Butch Peebles, played football at Gardner Webb
- Grandfather, Kenneth Peebles, played football and was a wrestler at UVa
- Grandfather, Michael Fallon, competed in hurling and Gaelic football at the University of Ireland, Galway
- Is the youngest of four sisters: Kathryn, Mallory and Shannon
- Sister, Mallory, plays field hockey at Division III Mary Washington
- Traveled on four different church mission trips on summer break: Lancaster, Pa. (working on a damaged elementary school), Hilton Head, S.C. (working with underprivileged and aged parishioners), Montego Bay, Jamaica (working at an orphanage) and a Sioux Indian Reservation (working on church and school maintenance projects)

#10 EMILIA TAPSALL

FRESHMAN • 5-5 • MIDFIELD
OLD GREENWICH, CONN.
GREENWICH ACADEMY



High School

- 2012 Harrow Sports/NFHCA High School first team All-American
- 2012 Harrow Sports/NFHCA High School All-South Region
- 2011 second team All-American
- Helped lead her 2012 Greenwich Academy team to a New England Private School championship, winning All-Tournament honors
- 2010-11 NEPSAC finalist and NEPSAC All-Tournament team
- Member of the Futures Elite team
- Also a four-year varsity starter for the Greenwich Academy lacrosse team

Personal

- Mother, Catherine Tapsall, played three years of lacrosse and four years of soccer at Harvard, earning All-American honors in the latter
- Father, Ian Tapsall, played field hockey for South Gate (1975-80) and was a U21 England trialist
- Uncle, Manzar Iqbal, was the captain of the USA Men's Field Hockey team in the 1984 Summer Olympics
- Has two older sisters, Brittany and Olivia, and a younger sister, Faye

#11 LUCY HYAMS

FRESHMAN • 5-6 • MIDFIELD
WHITSTABLE, KENT, ENGLAND
KENT COLLEGE



High School

- Played for the Hockey England U16 team (2008-10) U18 (2010-12) and U21 (2013)
- Played with the Great Britain U-21 training squad in December 2012
- Earned a spot on the final U21 roster, competing at the Junior World Cup in Germany July 27-Aug. 4
- Won a bronze medal at the 2011 European Championship in Holland with the Hockey England U18 team
- Awarded the Junior Hockey Player of the Year
- Also played tennis at Kent College and netball at Q.E. Grammar

Personal

- Daughter of Mark and Catherine Hyams
- Has two sisters, Hannah and Sarah
- Earned the 2012 Queen Elizabeth's Form Prize

#12 ELIZABETH HANKS

SENIOR • 5-5 • FORWARD
HUMMELSTOWN, PA.
HERSHEY HIGH SCHOOL



2012

- 2012 Gladiator by SGI/NFHCA National Academic Squad
- Played in 19 games with four starts, including starting the NCAA Tournament second round game against Princeton
- Scored her first collegiate goal against Towson (Aug. 31)
- Scored the game-winning goal against Miami (Ohio) on Sept. 14
- Scored a goal in the 7-0 victory over New Hampshire (Oct. 7)
- Logged an assist in the NCAA Tournament first round victory over Iowa (Nov. 10)

2011

- Played in nine games with one start
- Tallied first career assist vs. VCU (Aug. 26)

2010

- Redshirted the season
- Selected to NFHCA All-Academic Team
- Named to ACC Academic Honor Roll

International/National

- Four-time Futures participant
- Three-time gold medal winner at the National Festival
- Participated in National Indoor Tournament

High School

- 2009 all-state selection
- Three-time Mid Penn Conference all-star
- Twice led team to a runner-up finish in the state tournament
- 2009 academic All-American and academic all-state honoree
- Also played basketball and lacrosse
- Wendy's High School Heisman award winner



Personal

- Daughter of Greg and Mary Sue Hanks
- Has two older brothers, Tim and Teddy, and an older sister, Marie
- Commerce major, Leadership minor

HANKS' CAREER STATISTICS

Year	GP/GS	Shots	Goals	Assists	Points	DS
2010	DNP					
2011	9/1	0	0	1	1	0
2012	19/4	10	3	1	7	0
Totals	28/5	10	3	2	8	0

#13 KELSEY LEBLANC

JUNIOR • 5-1 • BACK
HAVERFORD, PA.
HAVERFORD HIGH SCHOOL



2012

- Started the first four games of the season before being sidelined with a leg injury
- Returned to the field against Wake Forest (Oct. 20)
- Played in 10 games with seven starts, including starting all three post-season contests

2011

- Played in 19 games with 5 starts
- Recorded first collegiate goal at Northwestern (Sept. 18)
- Also scored vs. Boston College (Sept. 23)

High School

- 2010 first team all-state; 2009 second team all-state
- Three-time Central League, Main Line and Delaware County first team
- Led Haverford in scoring for two seasons, including 20 goals and 17 assists as a senior
- Named the team's most valuable player
- Played with WC Eagles Hockey Club
- Selected as an Academic All-American
- Also competed in lacrosse

Personal

- Daughter of Regan and Kathleen LeBlanc
- Has an older brother, Jordan, and a younger sister, Maya
- Mom, Kathleen, played field hockey at Temple
- Dad, Regan, played soccer at Eastern University
- Brother, Jordan, currently plays soccer at Old Dominion
- Psychology major

LEBLANC'S CAREER STATISTICS

Year	GP/GS	Shots	Goals	Assists	Points	DS
2011	19/5	10	2	0	4	0
2012	10/7	0	0	0	0	0
Totals	29/12	10	2	0	4	0

#16 LANE SMITH



SENIOR • 5-10 • BACK
OTTAWA HILLS, OHIO
OTTAWA HILLS HIGH SCHOOL

2012

- 2012 Gladiator by SGI/NFHCA National Academic Squad
- Appeared in 15 games with eight starts
- Had a defensive save, the first of her career, against Penn State (Aug. 26)
- Had two assists in the victory over Towson (Aug. 31)
- Took shots against Towson (Aug. 31), Yale (Oct. 6), and New Hampshire (Oct. 7)

2011

- Played in all 20 games with 15 starts
- Scored first career goal at Northwestern (Sept. 18)
- Also scored against Richmond (Sept. 25) and Connecticut (Oct. 9)
- Tallied first career assist in the season opener against VCU (Aug. 26)

2010

- Saw action in five games
- Selected to NFHCA All-Academic Team
- Named to ACC Academic Honor Roll

National/International

- Named to 2009-10 Olympic Development Squad
- Attended Junior National Camp
- Two-time gold medalist with the Junior Olympic Team
- Member of the first Midwest Regional Team to medal at the National Futures Championships

High School

- Midwest Regional All-American
- 2009 all-state selection
- Two-time team most valuable player
- Served as team captain
- Also competed in lacrosse and earned all-state honors
- Served as class president
- Co-president of Volunteer Focus

Personal

- Daughter of Jay Smith and Leah Hileman
- Has three brothers, Matt, Kevin and Graham; and a sister, Madeline
- Mother, Leah, played tennis at Miami (Ohio)
- Media Studies major

SMITH'S CAREER STATISTICS

Year	GP/GS	Shots	Goals	Assists	Points	DS
2010	5/0	0	0	0	0	0
2011	20/15	6	3	3	9	0
2012	15/8	3	0	2	2	1
Totals	40/23	9	3	5	11	1



#17 HADLEY BELL

SENIOR • 5-9 • MIDFIELD
SHAKER HEIGHTS, OHIO
HATHAWAY BROWN HIGH SCHOOL



2012

- 2012 Gladiator by SGI/NFHCA National Academic Squad
- 2012 All-Atlantic Coast Conference Academic Field Hockey Team
- Played in all 22 of the Cavaliers games with 14 starts
- Scored two goals against Boston College (Sept. 21), the first multi-goal game of her career
- Also scored against Richmond (Aug. 29)
- Had the game-winning goal in the NCAA Tournament victory over Iowa (Nov. 10)
- Logged an assist in the road win at Boston U. (Sept. 23)
- Finished the season with four goals and two assists, taking 18 shots (nine on goal)

2011

- Played in all 20 games and started in 18
- Had four goals and three assists for 11 points
- Recorded first collegiate goal against VCU (Aug. 26)
- Scored twice vs. Towson (Sept. 2) and again vs. UC Davis (Oct. 6)
- 17 out of 25 shots were on target

2010

- Started 18 of the 22 games she played
- Tallied two assists for two points
- Had an assist vs. Longwood (Oct. 6)
- Also assisted a goal vs. William & Mary (Oct. 18)
- Recorded 17 shots, including seven on target
- Named to ACC Academic Honor Roll

High School

- Started and finished high school at Hathaway Brown
- Spent two years in Australia at Ravenswood School for Girls
- Played for Independent Girls' School Sports Association and New South Wales Combined Independent Schools teams while in Australia
- A Northeastern Ohio First Team All-League selection
- Also played for Rapid Fire Field Hockey Club

Personal

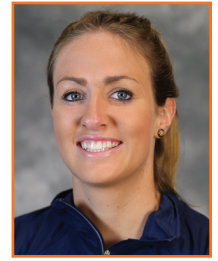
- Daughter of Buddy and Hilary Bell
- Has a two brothers, Dylan and Ryder, and a sister, Peyton
- Participated in Coach for College program in Vietnam in summer 2011
- English major, Art History minor

BELL'S CAREER STATISTICS

Year	GP/GS	Shots	Goals	Assists	Points	DS
2010	22/18	17	0	2	2	0
2011	20/18	25	4	3	11	0
2012	22/14	18	4	2	10	0
Totals	64/50	60	8	7	23	0

#18 ELLY BUCKLEY

SENIOR • 5-11 • FORWARD
SCARBOROUGH, PERTH, AUSTRALIA
JOHN XXIII COLLEGE



2012

- Longstreth/ NFHCA Division I Second Team All-American
- Longstreth/ NFHCA Division I All-South Region first team
- All-VaSID first team
- All-ACC
- Recipient of the Ralph Sampson Scholarship, awarded to a rising fourth-year student-athlete who has distinguished himself or herself during his or her intercollegiate athletic career at the University of Virginia
- After playing as a forward her first two seasons, transitioned to playing defense
- Led the ACC with five defensive saves, seventh in the national rankings
- Ranked among the nation's leaders in goals per game and points per game all season, ending the year ranked 23rd with 0.77 gpg and 23rd in ppg (1.86)
- Will enter her senior season tied for seventh on the Cavalier career points list (133), in eighth place on the career goals list (53), and 10th on the career assists list (27)
- Second on the team in goals (17), tied for second in assists (7) and second in points (41)
- 17 goals is ranked seventh on the Virginia junior class top-10 list, 41 points is ranked eighth
- Had three assists in the win over Richmond (Aug. 29), the second three-assist game of her career
- Scored four goals against Towson (Aug. 31), her second career four-goal game
- Scored the game-winning goal in double overtime at Michigan State (Sept. 7)
- Scored a goal in both NCAA Tournament games, also logging a defensive save against Princeton
- Pre-season All-ACC selection
- Served as team co-captain

2011

- Served as team co-captain
- Tabbed NFHCA Second Team All-American
- First Team All-South Region for the second consecutive year
- An All-ACC selection for the second year in a row
- Named to the ACC All-Tournament team
- Played in all 20 games with 17 starts
- Scored 17 times and contributed 9 assists for 43 points
- Took 67 shots
- Had six multi-goal games
- Ranked fourth in the ACC for shots and goals, fifth for points



2010

- NFHCA Third Team All-American
- Named Second Team All-American by womensfieldhockey.com
- First Team All-South Region
- An All-ACC selection
- Honored on womensfieldhockey.com National All-Rookie Team
- Started 21 of the 22 games she played
- Compiled 19 goals and 11 assists for 49 points
- Her 11 helpers led the team
- Second on the squad behind Paige Selenski with 19 scores
- Her 89 shots also ranked second
- Recorded five game-winning goals
- Ranked fourth in the ACC in shots, points, goals and assists
- Scored four times to mark first career hat trick vs. Radford (Oct. 24)
- Had four multi-goal games
- Scored twice in NCAA games vs. Michigan State (Nov. 13) and Princeton (Nov. 14)
- Tallied three assists vs. Ohio State (Sept. 11)
- Named to NFHCA All-Academic Team
- Selected to All-ACC Academic Team
- Named to ACC Academic Honor Roll

International/National

- Member of the U-16 Australian National Team

High School

- State representative and state captain
- Also captained John XXIII squad
- Played for Perth Club Permiers

Personal

- Daughter of Alan and Bernadette Buckley
- Has two older brothers: Aedan and Ben
- Has an older sister, Jemma, who played field hockey at Maryland
- Psychology major

BUCKLEY'S CAREER STATISTICS

Year	GP/GS	Shots	Goals	Assists	Points	DS
2010	22/21	89	19	11	49	0
2011	20/17	67	17	9	43	0
2012	22/22	84	17	7	41	5
Totals	64/60	240	53	27	133	5

#19 CHLOE PENDLEBURY

SENIOR • 5-8 • BACK
PERTH, AUSTRALIA
MURDOCH UNIVERSITY



2012

- Played in all 22 games with 15 starts
- Took the first shot of her career at Temple
- Had her first two career assists against Richmond (Aug. 29)
- Followed that with a two-assist performance in the next game against Towson (Aug. 31)
- Also logged an assist against Northeastern (Sept. 8)

2011

- Started all 18 games she played in

2010

- VaSID Second Team All-State
- Defensive sweeper for the Cavaliers as a freshman
- Finished the year with four defensive saves, a mark that led the ACC
- Started 21 of the 22 games she played

International/National

- Played for U-16 Australian National Team

High School

- Five-time state representative
- Three-time state captain
- Played for Perth Club Permiers
- Named school's Sports Woman of the Year

Personal

- Daughter of Colin and Jennifer Pendlebury
- Has an older brother, Brody

PENDLEBURY'S CAREER STATISTICS

Year	GP/GS	Shots	Goals	Assists	Points	DS
2010	22/21	0	0	0	0	4
2011	18/18	0	0	0	0	0
2012	22/15	6	0	5	5	0
Totals	62/54	6	0	5	5	4

#20 SARAH WEBER

SENIOR • 5-7 • FORWARD/BACK
MOORESTOWN, N.J.
MOORESTOWN HIGH SCHOOL



2012

- Played in 15 games with one start
- Recorded an assist vs. New Hampshire (Oct. 7)
- Scored a goal and had an assist against Towson (Aug. 31)

2011

- Played in 11 games, started in two
- Scored first collegiate goal at James Madison

2010

- Redshirted the season

National/International

- 2009 Futures Elite selection

High School

- Member of Spirit of USA club team
- 2009 Burlington County Times Player of the Year
- Two-time all-state selection
- Two-time first team All-South Jersey honoree
- Three-time first team All-Burlington County selection
- Helped squad to two conference championships
- Named team's most valuable player as a senior
- Also competed in basketball and lacrosse
- Lacrosse team won two state titles
- Honor Roll member
- National Girls and Women in Sport Day representative



Personal

- Daughter of Jim and Ginny Weber
- Has two older sisters, Elizabeth and Virginia
- Mom, Ginny, played lacrosse at the University of Delaware
- Sister, Virginia, played lacrosse at Loyola (Md.) 2009-11
- Sister, Elizabeth, also played lacrosse at Loyola from 2005-09
- Intends to major in education

WEBER'S CAREER STATISTICS

Year	GP/GS	Shots	Goals	Assists	Points	DS
2010	DNP					
2011	11/2	2	1	0	2	0
2012	15/1	4	1	2	4	0
Totals	26/3	6	2	2	6	0

#21 RILEY TATA

FRESHMAN • 5-7 • FORWARD
VIRGINIA BEACH, VA.
NORFOLK ACADEMY



High School

- Four-sport athlete at Norfolk Academy, playing field hockey, basketball, soccer, and lacrosse
- 2012 Harrow Sports/NFHCA High School All-South Region
- Two-time first team All-State and two-time first team All-Tidewater
- 2012 TCIS Player of the Year and Team MVP
- Led Norfolk Academy to the state tournament three times, advancing to the finals in 2010 and 2011
- All-time single season and career record holder at Norfolk Academy with 119 goals, 37 assists, and 275 points
- Three-time TCIS leading scorer (65 points- 2010; 95 points- 2011; 97 points- 2012)
- Member of the 2009 Commonwealth Games U-16 champion team

Personal

- Daughter of Bob and Anne Ferrell Tata
- Has two older sisters, Peyton and Carter, and a younger brother, Robert
- Her grandfather, Bob Tata, played football and baseball at Virginia, being named All-Virginia Big Six in both sports. He was also a collegiate batting champion and played in the North-South Shrine All-Star Game
- Her father, Bob, played football at the Naval Academy, setting 17 Navy records as a kicker
- Was selected as a 2012 Virginia Beach Neptune Princess
- Participated in mission trips to India, Tanzania, and the Dominican Republic
- Spent three years volunteering for senate and presidential campaigns

#22 MEGAN KELLY

FRESHMAN • 5-7 • MIDFIELD
PHOENIXVILLE, PA.
ARCHBISHOP CARROLL



High School

- Four-year varsity field hockey player at Archbishop Carroll High School
- 2012 first team All-State (Pennsylvania)
- 2011 second team All-State
- All-Delaware County (first team in 2012, second team in 2011)
- Two time All-Catholic first team and a 2010 second team All-Catholic selection
- 2011-13 Futures Elite, including playing in the 2012 Futures Elite Championship, and 2011 AAU Junior Olympics
- Toured China in 2012, playing in the Chinese National Youth Hockey U19 Championships, finishing in second place
- Also played lacrosse (midfield) at ACHS
- Member of the National Honor Society

Personal

- Daughter of Joe & Gina Kelly
- Has a twin sister, Katie, who also will be playing on the Cavalier field hockey team
- Volunteered with Best Buddies, Cystic Fibrosis Foundation "Wishes and Dreams" Gala, and Fox Chase Cancer Center "Paws for a Cause"
- Enjoys skiing and cooking

#23 JEANNIE BLACKWOOD

FRESHMAN • 5-7 • BACK
VIRGINIA BEACH, VA.
FRANK W. COX



High School

- Player field hockey, soccer, and basketball at Frank W. Cox High School
- 2012 first team All-State (Virginia)
- 2012 first team All-Beach District and first team All-Eastern Region
- 2011 second team All-Beach District
- National Honor Society and National English, Science, and Math Honor Societies
- Three-time Class President (2009, 2011-12), 2010 Class Treasurer

Personal

- Daughter of Nancy and Vaden Blackwood
- Has three older brothers, George, Scott, and Chris Blackwood, and an older sister, Georgia Kubic

#24 KATIE ROBINSON

SENIOR • 5-1 • BACK
MOUNT JOY, PA.
DONEGAL HIGH SCHOOL



2012

- 2012 Gladiator by SGI/NFHCA National Academic Squad
- 2012 All-Atlantic Coast Conference Academic Field Hockey Team
- Started all 22 games this season
- Named to the All ACC-Tournament team

2011

- Started in six of the 20 games she played
- Contributed five points from two goals and an assist
- Made first career assist vs. VCU (Aug. 26)
- Scored against Northwestern (Sept. 18) and Boston College (Sept. 23)



2010

- Played in 21 games and made seven starts
- Contributed two goals for four points
- Finished with six shots, including five on target
- Scored first career goal at North Carolina (Oct. 16)
- Also notched a score vs. Wake Forest (Oct. 23)
- Made first career start vs. Northwestern (Sept. 6)
- Selected to NFHCA All-Academic Team
- Named to ACC Honor Roll

International/National

- Played with Mid Atlantic Team at 2011 Junior National Championships
- 2009 Futures Elite and Olympic Development Program selection
- Member of the U-19 National Team
- Participated in Junior National Camp
- Competed in the 2009 National Futures Tournament, helping the team to a second-place finish

High School

- Led team to sectional and district championships and to the state semifinals
- Two-time all-state selection, including a first-team selection as a senior
- Selected as a Lancaster-Lebanon first team all-star
- Member of X-Calibur club team
- Served as team captain
- Also competed in basketball and lacrosse
- National Honor Society member and also served as vice president
- Student council member
- Also a member of Math Honors Society

Personal

- Daughter of Dave and Sheri Robinson
- Has two younger brothers: Michael and Chris; and two younger sisters: Amanda and Rachel
- Mom, Sheri, played field hockey and softball at Elizabethtown College (1983-87)
- Enjoys the outdoors, music, shopping and reading
- Intends to major in elementary education

ROBINSON'S CAREER STATISTICS

Year	GP/GS	Shots	Goals	Assists	Points	DS
2010	21/7	6	2	0	4	0
2011	20/6	6	2	1	5	0
2012	22/22	0	0	0	0	0
Totals	63/35	12	4	1	9	0

#98 REBECCA HOLDEN



SOPHOMORE • 5-2 • GOALKEEPER
FISHING CREEK, N.J.
LOWER CAPE MAY

2012

- Played in 10 games with four starts, amassing a 3-1 record
- Allowed seven goals (1.59 GAA) with 19 saves (73.1 save percentage) in her rookie campaign
- First start of her career came at Penn State (Aug. 26). She took the loss, with three saves and two goals allowed in 35 minutes of play
- Earned her first victory, getting the start against Towson (Aug. 31)
- Had a season-high eight saves at William & Mary, playing the first 44:52 of the game
- Played her first complete game against Saint Joseph's (Sept. 30)
- Made four saves without allowing a goal in the final 29 minutes of the NCAA Tournament second round game against Princeton
- Did not allow a goal in her final three appearances of the season and was a part of four team shutouts
- Also joined the Virginia softball team for second half of its season, making one appearance as a pinch runner

International (2013)

- Named to the United States' Under-19 Junior National Squad
- Played in five games, including taking on the Dutch Junior National Team, on a tour of The Netherlands

High School

- Two-time first team All-CAL Division
- Two-time Herald First Team League MVP
- Led squad to two CAL Division championships
- Totaled 560 saves and .874 save percentage during prep career
- Served as team captain
- Played for Spirit of USA club team
- Participated in Junior Olympics, National Festival and Disney Showcase
- Won gold medal in 2011 at the National Festival
- National Honor Society member
- Served as president of Tri-M Music Honor Society
- Also played softball

Personal

- Daughter of Michael and Sharon Holden
- Has an older sister, Amber, and two younger brothers, Michael and Gregory
- Intends to major in English or education

HOLDEN'S CAREER STATISTICS

Year	GP/GS	Min	Saves	GA	Save %	GAA	SO
2012	10/4	308:22	19	7	.731	1.59	0
Totals	10/4	308:22	19	7	.731	1.59	0



2012 STATISTICS AND RESULTS



2012 VIRGINIA BOX SCORE

Overall: 16-6-0 ACC: 4-1-0 Home: 10-2-0 Away: 6-2-0 Neut: 0-2-0

##	Name	GP-GS	G	A	Pts	Sh	Shot%	SOG	SOG%	GW	PS-ATT	DSV
21	Paige Selenski	21-21	27	13	67	113	.239	77	.681	7	0-0	0
18	Elly Buckley	22-22	17	7	41	84	.202	53	.631	2	0-0	5
23	Rachel Sumfest	22-20	16	4	36	41	.390	30	.732	4	0-0	0
9	Michelle Vittese	21-21	9	7	25	28	.321	19	.679	1	0-0	0
17	Hadley Bell	22-14	4	2	10	18	.222	9	.500	1	0-0	0
8	Carissa Vittese	22-16	4	1	9	29	.138	17	.586	0	0-2	0
12	Elizabeth Hanks	19-4	3	1	7	10	.300	7	.700	1	0-0	0
3	Jess Orrett	22-16	1	5	7	7	.143	2	.286	0	0-0	0
19	Chloe Pendlebury	22-15	0	5	5	6	.000	1	.167	0	0-0	0
11	Phoebe Willis	18-3	1	2	4	5	.200	3	.600	0	0-0	0
20	Sarah Weber	15-1	1	2	4	4	.250	3	.750	0	0-0	0
7	Taylor Brown	22-6	1	1	3	12	.083	7	.583	0	0-0	0
16	Lane Smith	15-8	0	2	2	3	.000	1	.333	0	0-0	1
10	Britt Knouse	6-2	0	0	0	2	.000	1	.500	0	0-0	0
98	Rebecca Holden	10-4	0	0	0	0	.000	0	.000	0	0-0	0
24	Katie Robinson	22-22	0	0	0	0	.000	0	.000	0	0-0	0
15	Jessica White	4-0	0	0	0	0	.000	0	.000	0	0-0	0
13	Kelsey LeBlanc	10-7	0	0	0	0	.000	0	.000	0	0-0	0
4	Maddie DeCerbo	22-22	0	0	0	0	.000	0	.000	0	0-0	1
1	Jenny Johnstone	20-18	0	0	0	0	.000	0	.000	0	0-0	0
00	Amanda Crider	2-0	0	0	0	0	.000	0	.000	0	0-0	0
Total.....		22	84	52	220	362	.232	230	.635	16	0-2	7
Opponents.....		22	40	34	114	232	.172	153	.659	6	0-0	6

##	Name	GP-GS	Minutes	GA	Avg	Saves	Pct	W	L	T	Sho
00	Amanda Crider	2-0	50:39	0	0.00	2	1.000	0	0	0	0/2
98	Rebecca Holden	10-4	308:22	7	1.59	19	.731	3	1	0	0/4
1	Jenny Johnstone	20-17	1214:28	33	1.90	85	.720	13	5	0	2/3
TM TEAM			2:54	0	0.00	7	1.000	0	0	0	4/0
Total.....		22	1576:23	40	1.78	113	.739	16	6	0	6
Opponents.....		22	1576:23	84	3.73	146	.635	6	16	0	0

2012 VIRGINIA RESULTS

Date	Opponent	Result	Attendance
Aug. 24	at Temple	W, 4-3 (OT)	364
Aug. 26	at #9 Penn State	L, 3-2	283
Aug. 29	RICHMOND	W, 6-1	149
Aug. 31	TOWSON	W, 14-0	353
Sep. 2	#3 OLD DOMINION	W, 5-4	305
Sep. 7	at #20 Michigan State	W, 2-1 (OT)	308
Sep. 8	vs. #14 Northeastern	L, 3-2	120
Sep. 11	at William and Mary	W, 2-0	546
Sep. 15	MIAMI (Ohio)	W, 6-1	230
Sep. 21	at #22 Boston College	W, 3-1	301
Sep. 23	at #12 Boston University	W, 2-0	137
Sep. 28	#4 MARYLAND*	W, 3-2	413
Sep. 30	ST. JOSEPH'S	W, 6-3	188
Oct. 6	YALE	W, 4-0	212
Oct. 7	#19 NEW HAMPSHIRE	W, 7-0	127
Oct. 13	at #2 North Carolina*	L, 3-2	924
Oct. 20	#25 WAKE FOREST*	W, 4-0	301
Oct. 27	at #22 Duke*	W, 3-1	362
Oct. 28	#2 PRINCETON	L, 2-1	226
Nov. 2	vs. Maryland #	L, 5-1	379
Nov. 10	IOWA \$	W, 3-2	396
Nov. 11	PRINCETON \$	L, 5-2	404

*ACC game

ACC Tournament - Chapel Hill, N.C.

\$ NCAA Tournament - Charlottesville, Va.

TEAM STATISTICS	VA	OPP
Goals-Shot attempts	84-362	40-232
Goals scored per game	3.82	1.82
Shot pct.	.232	.172
Shots on goal-Attempts	230-362	153-232
SOG pct.	.635	.659
Shots/Game	16.5	10.5
Assists	52	34
Penalty Corners	142	123
Penalty Strokes	0-2	0-0
Green cards	16	16
Yellow cards	4	6
Red cards	0	0

ATTENDANCE

Total	3304	3225
Dates/Avg Per Date	12/275	8/403

GOALS BY PERIOD

	1	2	OT	2OT	Total
Virginia	39	43	1	1	84
Opponents	21	18	1	0	40

SHOTS BY PERIOD

	1	2	OT	2OT	Total
Virginia	173	179	9	1	362
Opponents	133	95	4	0	232

SAVES BY PERIOD

	1	2	OT	2OT	Total
Virginia	70	40	3	0	113
Opponents	68	76	2	0	146

CORNERS BY PERIOD

	1	2	OT	2OT	Total
Virginia	62	78	2	0	142
Opponents	66	55	2	0	123

TEAM HIGHS

Goals:	14	vs. Towson (Aug. 31)
Assists:	8	vs. Richmond (Aug. 29)
	8	vs. Towson (Aug. 31)
Points:	36	vs. Towson (Aug. 31)
Shots:	44	vs. Towson (Aug. 31)
Shots/Goal:	29	vs. Towson (Aug. 31)
Saves:	14	vs. Princeton (Nov. 11)
Corners:	16	vs. MSU (Sep. 7)
	16	vs. Yale (Oct. 6)

INDIVIDUAL HIGHS

Goals:	4	Buckley vs. Towson (Aug. 31)
	4	Selenski vs. Towson (Aug. 31)
Assists:	3	Buckley vs. Richmond (Aug. 29)
Points:	10	Selenski vs. Towson (Aug. 31)
Shots:	11	Buckley vs. MSU (Sep. 7)
	11	Buckley vs. Towson (Aug. 31)
Saves:	11	Jenny Johnstone vs. UNC (Oct. 13)



POINTS

CAREER

1.	238	Paige Selenski	2008-10, 12
2.	230	Meridith Thorpe	1995-1998
3.	173	Cindy Carzo	1976-1979
4.	160	Michelle Vizzuso	1995-1998
5.	157	Meredith Elwell	1996-1999
6.	154	Jackie Campbell	1979-1982
7.	133	Jessica Coleman	1998-2001
	133	Elly Buckley	2010-present
8.	128	Traci Ragukas	2006-2009
9.	105	Cheryl Gleason	1981-1984
10.	96	Lorraine Vizzuso	1997-2000

SEASON

1.	76	Cindy Carzo	1978
2.	70	Meridith Thorpe	1996
3.	67	Paige Selenski	2012
4.	62	Paige Selenski	2010
	62	Paige Selenski	2009
6.	61	Meridith Thorpe	1997
7.	54	Jessica Coleman	1999
8.	53	Michelle Vizzuso	1998
9.	52	Meridith Thorpe	1995
	52	Lindsey Sheehan	1985

FRESHMAN

1.	52	Meridith Thorpe	1995
2.	49	Elly Buckley	2010
3.	47	Paige Selenski	2008
4.	45	Meredith Elwell	1996
	45	Jackie Campbell	1979
6.	40	Cindy Carzo	1976
7.	35	Traci Ragukas	2006
8.	31	Lorraine Vizzuso	1997
9.	28	Su Cox	1976
10.	26	Michelle Vizzuso	1995

SOPHOMORE

1.	70	Meridith Thorpe	1996
2.	62	Paige Selenski	2009
3.	54	Jessica Coleman	1999
4.	43	Elly Buckley	2011
5.	39	Meredith Elwell	1997
6.	36	Michelle Vizzuso	1996
	36	Cindy Carzo	1977
	36	Rachel Sumfest	2012
9.	35	Jackie Campbell	1980
	35	Mia Link	2004

JUNIOR

1.	76	Cindy Carzo	1978
2.	62	Paige Selenski	2010
3.	61	Meridith Thorpe	1997
4.	45	Michelle Vizzuso	1997
5.	43	Meredith Elwell	1998
7.	42	Jackie Campbell	1981
8.	41	Elly Buckley	2012
9.	38	Traci Ragukas	2008
10.	35	Cheryl Gleason	1983
	35	Jessica Coleman	2000

SENIOR

1.	67	Paige Selenski	2012
2.	53	Michelle Vizzuso	1998
3.	52	Lindsey Sheehan	1985
4.	47	Meridith Thorpe	1998
5.	42	Jessica Coleman	2001
6.	38	Heather Hale	1996
7.	37	Kristen Aceto	1989
8.	37	Mary Henry	1982
9.	32	Jackie Campbell	1982
10.	30	Meredith Elwell	1999

GOALS

CAREER

1.	101	Meridith Thorpe	1995-1998
2.	100	Paige Selenski	2008-10, 12
3.	84	Cindy Carzo	1976-1979
4.	69	Jackie Campbell	1979-1982
5.	65	Meredith Elwell	1994-1999
6.	58	Jessica Coleman	1998-2001
7.	54	Traci Ragukas	2006-2009
8.	53	Elly Buckley	2010-present
9.	50	Michelle Vizzuso	1995-1998
10.	42	Cheryl Gleason	1981-1984

SEASON

1.	37	Cindy Carzo	1978
2.	32	Meridith Thorpe	1996
3.	27	Paige Selenski	2012
	27	Paige Selenski	2010
	27	Paige Selenski	2009
6.	26	Meridith Thorpe	1997
7.	24	Meridith Thorpe	1995
	24	Lindsey Sheehan	1985
9.	22	Jackie Campbell	1979
	22	Jessica Coleman	1999

FRESHMAN

1.	24	Meridith Thorpe	1995
2.	22	Jackie Campbell	1979
3.	20	Meredith Elwell	1996
	20	Cindy Carzo	1976
5.	19	Elly Buckley	2010
	19	Paige Selenski	2008
7.	15	Traci Ragukas	2006
8.	14	Su Cox	1976
9.	12	Lorraine Vizzuso	1997
10.	11	Michelle Vizzuso	1995

SOPHOMORE

1.	32	Meridith Thorpe	1996
2.	27	Paige Selenski	2009
3.	22	Jessica Coleman	1999
4.	18	Cindy Carzo	1977
5.	17	Elly Buckley	2011
6.	16	Jackie Campbell	1980
	16	Rachel Sumfest	2012
7.	15	Mia Link	2004
8.	14	Meredith Elwell	1997
	14	Inge Kaars Sijpesteijn	2006
10.	13	Traci Ragukas	2007
	13	Michelle Vizzuso	1996

JUNIOR

1.	37	Cindy Carzo	1978
2.	27	Paige Selenski	2010
3.	26	Meridith Thorpe	1997
4.	18	Meredith Elwell	1998
	18	Jackie Campbell	1981
6.	16	Traci Ragukas	2008
	16	Cheryl Gleason	1983
8.	15	Jessica Coleman	2000
9.	14	Nicole McNichol	1992
	14	Mary Henry	1981
	14	Katie Phillips	2004

SENIOR

1.	27	Paige Selenski	2012
2.	24	Lindsey Sheehan	1985
3.	20	Jessica Coleman	2001
4.	19	Meridith Thorpe	1998
5.	16	Mary Henry	1982
6.	15	Kristen Aceto	1989
7.	14	Michelle Vizzuso	1998
8.	13	Meredith Elwell	1999
	13	Jackie Campbell	1982
10.	12	Elaine Maddox	1986

ASSISTS

CAREER

1.	60	Michelle Vizzuso	1995-1998
2.	52	Carrie Goodloe	1998-2001
3.	44	Laura Lindsay	1996-1999
4.	38	Heidi Waterman	1991-1994
	38	Paige Selenski	2008-10, 12
6.	37	Heather Hale	1993-1996
7.	34	Nicole McMaster	1993-1996
8.	28	Natalie Wheatall	1982-1985
	28	Meridith Thorpe	1995-1998
10.	27	Elly Buckley	2010-present

SEASON

1.	25	Michelle Vizzuso	1998
2.	21	Michelle Vizzuso	1997
3.	20	Heather Hale	1996
4.	19	Laura Lindsay	1997
	19	Carrie Goodloe	1999
6.	17	Nicole McMaster	1996
	17	Heather Hale	1995
8.	16	Heidi Waterman	1994
	16	Laura Lindsay	1999
10.	15	Nicole McMaster	1995
	15	Carrie Goodloe	2000

FRESHMAN

1.	11	Elly Buckley	2010
2.	10	Pien Hulsebosch	2008
3.	9	Paige Selenski	2008
4.	7	Lorraine Vizzuso	1997
5.	6	Michelle Vittese	2008
	6	Kristen Daddona	1991
7.	5	Traci Ragukas	2006
	5	Meredith Elwell	1996
	5	Kelly Daddona	1990
	5	Tracy Drummond	1984
	5	Cheryl Gleason	1981

SOPHOMORE

1.	19	Laura Lindsay	1997
	19	Carrie Goodloe	1999
3.	13	Heidi Waterman	1992
	12	Inga Stöckel	2009
5.	11	Meredith Elwell	1997
	11	Sarah Miller	2003
7.	10	Michelle Vizzuso	1996
	10	Kristen Daddona	1992
	10	Jessica Coleman	1999
10.	9	Elly Buckley	2011
	9	Michelle Vittese	2009
	9	Melissa Hayes	1996
	9	Natalie Wheatall	1983

JUNIOR

1.	21	Michelle Vizzuso	1997
2.	17	Heather Hale	1995
3.	15	Nicole McMaster	1995
	15	Carrie Goodloe	2000
5.	10	Beth McGee	1981
6.	9	Meridith Thorpe	1997
	9	Katie Jo Gerfen	2003
	9	Abby Taylor	2006
9.	8	Paige Selenski	2010
	8	Heidi Waterman	1993

SENIOR

1.	25	Michelle Vizzuso	1998
2.	20	Heather Hale	1996
3.	17	Nicole McMaster	1996
4.	16	Heidi Waterman	1994
	16	Laura Lindsay	1999
6.	14	Carrie Goodloe	2001
7.	13	Lesley Groff	1988
	13	Michelle Vizzuso	1997
	13	Paige Selenski	2012



POINTS- SINGLE GAME

1.	14	Cindy Carzo	1976 vs. Goucher
2.	10	Paige Selenski	2012 vs. Towson
	10	Elly Buckley	2010 vs. Radford
	10	Mia Link	2004 vs. Bucknell
	10	Su Cox	1975 vs. Sweet Briar
3.	9	Jessie Coleman	1999 vs. App. St.
4.	8	10 times; most recently: Elly Buckley	2012 vs. Towson

GOALS- SINGLE GAME

1.	7	Cindy Carzo	1976 vs. Goucher
2.	5	Su Cox	1975 vs. Sweet Briar
3.	4	Paige Selenski	2012 vs. Towson
	4	Elly Buckley	2012 vs. Towson
	4	Elly Buckley	2010 vs. Radford
	4	Paige Selenski	2010 vs. Old Dominion
	4	Mia Link	2004 vs. Bucknell
	4	Jessie Coleman	1999 vs. App. St.
	4	Meridith Thorpe	1997 vs. Davidson
	4	Meridith Thorpe	1996 vs. JMU
	4	Lindsey Sheehan	1985 vs. Davis & Elkins
	4	Cheryl Gleason	1983 vs. Delaware
	4	Mary Henry	1982 vs. Lynchburg
	4	Jackie Campbell	1981 vs. Richmond
	4	Kemp Passano	1978 vs. Goucher
	4	Amy Easter	1975 vs. RMCW

ASSISTS- SINGLE GAME

1.	4	Michelle Vissuso	1997 vs. Davidson
2.	3	23 times; most recently: Biffy Cornelison	2006 vs. Radford

HAT TRICKS - SEASON

1.	5	Meridith Thorpe	1996
2.	4	Meridith Thorpe	1997
3.	3	T.J. Whitehurst	1988
	3	Lindsey Sheehan	1985
	3	Jackie Campbell	1979
	3	Cindy Carzo	1978

HAT TRICKS - CAREER

1.	12	Meridith Thorpe	1995-1998
2.	8	Cindy Carzo	1976-1979
3.	7	Jackie Campbell	1979-1982
	7	Paige Selenski	2008-10, 12
5.	4	Lindsey Sheehan	1984-1985
		Jessica Coleman	1998-2001

CAREER GAMES

1.	90	Taylor Swezey	2007-2010
	90	Traci Ragukas	2006-2009
	90	Michelle Vizzuso	1995-1998
	90	Paige Selenski	2008-10, 12
5.	89	Haley Carpenter	2007-2010
	89	Meredith Elwell	1996-1999
	89	Meridith Thorpe	1995-1998
8.	88	Lori Mastropietro	1995-1998
	88	Peggy Boutilier	1994-1997

GAME WINNING GOALS- SEASON

1.	13	Cindy Carzo	1978
2.	9	Meridith Thorpe	1996
3.	8	Paige Selenski	2009
	8	Cindy Carzo	1976
5.	7	Paige Selenski	2010
	7	Meridith Thorpe	1995
	7	T.J. Whitehurst	1987
	7	Cheryl Gleason	1983
	7	Cindy Carzo	1977
	7	Jessica Coleman	2000

GAME WINNING GOALS- CAREER

1.	29	Cindy Carzo	1976-1979
2.	26	Meridith Thorpe	1995-1998
	26	Paige Selenski	2008-10, 12
4.	17	Jackie Campbell	1979-1982
5.	16	Jessica Coleman	1998-2001

GAME WINNING GOALS- CLASSES

FRESHMAN

1.	8	Cindy Carzo	1976
----	---	-------------	------

SOPHOMORE

1.	9	Meridith Thorpe	1996
----	---	-----------------	------

JUNIOR

1.	13	Cindy Carzo	1978
----	----	-------------	------

SENIOR

1.	6	Michelle Vizzuso	1998
	6	Kristen Aceto	1989
	6	Jackie Campbell	1982

SEASON GOALS AGAINST AVERAGE

1.	0.45	Mimi Beggs	1978
2.	0.58	Nancy Newman	1975
3.	0.70	Nancy Newman	1976
4.	0.83	Heather Dow	1981
5.	0.97	Kim Kastuk	2009
	0.97	Becky Worthington	1997

CAREER GOALS AGAINST AVERAGE

1.	0.78	Mimi Beggs	1977-1980
2.	0.86	Nancy Newman	1973-1976
3.	1.27	Heather Christman	1988-1990
4.	1.28	Michelle Cusimano	1993-1996
5.	1.36	Amy Brockman	1982-1983

SEASON SAVE PERCENTAGE

1.	.920	Mimi Beggs	1978
2.	.909	Donna DeNoble	1985
3.	.892	Donna DeNoble	1986
4.	.889	Heather Christman	1990
5.	.886	Heather Christman	1989

CAREER SAVE PERCENTAGE

1.	.897	Heather Dow	1981
2.	.882	Heather Christman	1988-1990
3.	.879	Donna DeNoble	1984-1987
4.	.875	Missy Farwell	1983-1985
5.	.863	Mimi Beggs	1977-1980

SAVES - SEASON

1.	267	Missy Farwell	1984
2.	239	Denise Wernersbach	1992
3.	215	Donna DeNoble	1986
4.	199	Michelle Cusimano	1994
5.	196	Donna DeNoble	1987
6.	193	Heather Christman	1990
7.	187	Heather Christman	1989
8.	184	Emily White	2002
9.	180	Missy Farwell	1985
10.	156	Denise Wernersbach	1991

SAVES - CAREER

1.	521	Denise Wernersbach	1990-1993
2.	474	Michelle Cusimano	1993-1996
3.	457	Heather Christman	1987-1990
4.	449	Missy Farwell	1982-1985
5.	425	Donna DeNoble	1984-1987
6.	311	Becky Worthington	1997-2000
7.	301	Mimi Beggs	1977-1980
8.	289	Emily White	2000-2003
9.	263	Logan Carr	2002-2004
10.	232	Amy Brockman	1980-1983
NR	169	Jenny Johnstone	2011-present

SAVES - GAME

1.	40	Donna DeNoble	ODU	1986
2.	36	Missy Farwell	UNC	1984
3.	29	Heather Christman	ODU	1990
4.	25	Donna DeNoble	PSU	1987
	25	Donna DeNoble	ODU	1987
	25	Liz Nolley	UNC	1988
7.	23	Donna DeNoble	JMU	1986
8.	22	Denise Wernersbach	Duke	1992
	22	Donna DeNoble	JMU	1986
10.	21	Missy Farwell	ODU	1984
	21	Donna DeNoble	PSU	1981
	21	Denise Wernersbach	Rich.	1992



SHUTOUTS - SEASON

1.	14	Mimi Beggs	1978
	14	Heather Dow	1981
3.	11	Denise Wernersbach	1990
	11	Mimi Beggs	1979

SHUTOUTS - CAREER

CAREER - GRASS

44	Mimi Beggs	1977-1980
----	------------	-----------

CAREER - TURF

28	Denise Wernersbach	1990-1993
----	--------------------	-----------

CONSECUTIVE - GRASS

8	Mimi Beggs	1978
---	------------	------

CONSECUTIVE - TURF

5	Michelle Cusimano	1996
---	-------------------	------

DEFENSIVE SAVES-SEASON

1.	25	Susan Crafts	1985
2.	13	Susan Crafts	1984
3.	10	Sandy Szilassy	1988
4.	7	Andy Begel	1987
	7	Sandy Szilassy	1988
	7	Barbara King	1994
7.	5	Elly Buckley	2012
	5	Natalie Wheatall	1984
	5	Bonnie Rosen	1991
	5	Julia Richardson	1999
	5	Erin Hayes	2006
	5	Lucy Meyers	2008

DEFENSIVE SAVES-CAREER

1.	38	Susan Crafts	1982-1985
2.	19	Sandy Szilassy	1986-1989
3.	12	Erin Hayes	2003-2006
4.	9	Julia Richardson	1997-2000
5.	8	Andy Begel	1985-1988
6.	7	Barbara King	1991-1994
	7	Bonnie Rosen	1988-1991
8.	6	Juli Bojanic	2001-2004
	6	Kelli Hill	1999-2002
	6	Biffy Cornelison	2002-2006
NR.	5	Elly Buckley	2010-present
	4	Chloe Pendlebury	2010-present

CAVALIERS IN THE NCAA RECORD BOOK

POINTS- GAME

T26.	10	Paige Selenski	2012 vs. Towson
	10	Elly Buckley	2010 vs. Radford
	10	Mia Link	2004 vs. Bucknell
	10	Su Cox	1975 vs. Sweet Briar

SAVES - GAME

T6.	40	Donna DeNoble	1986 vs. Old Dominion
T13.	36	Missy Farwell	1984 vs. North Carolina

POINTS - CAREER

T9.	238	Paige Selenski	2008-10, 12
T12.	230	Meredith Thorpe	1995-98

POINTS PER GAME - CAREER

11.	2.64	Paige Selenski	2008-10, 12
12.	2.58	Meredith Thorpe	1995-98

GOALS - CAREER

9.	101	Meredith Thorpe	1995-98
T10.	100	Paige Selenski	2008-10, 12

GOALS PER GAME - CAREER

11.	1.13	Meredith Thorpe	1995-98
12.	1.11	Paige Selenski	2008-10, 12

ASSISTS - CAREER

T26.	60	Michelle Vizzuso	1995-98
------	----	------------------	---------

ASSISTS PER GAME - CAREER

T20.	0.68	Carrie Goodloe	1998-01
T24.	0.67	Michelle Vizzuso	1995-98

SAVE PERCENTAGE - CAREER

T29.	.882	Heather Christman	1988-90
------	------	-------------------	---------

GOALIE WINS - CAREER

T7.	60	Kim Kastuk^	2007-10
-----	----	-------------	---------

GOALIE WINNING PERCENTAGE - CAREER

27.	.723	Kim Kastuk^	2007-10
-----	------	-------------	---------

GOALIE MINUTES PLAYED - CAREER

15.	5,659	Kim Kastuk^	2007-10
-----	-------	-------------	---------

TEAM POINTS - GAME

4.	36	vs. Towson	2012
----	----	------------	------

TEAM GOALS - GAME

T8.	14	vs. Towson	2012
T13.	13	vs. Davidson	1996
T13.	13	vs. Davis & Elkins	1996

TEAM POINTS - SEASON

15.	286		1996
-----	-----	--	------

TEAM GOALS - SEASON

19.	100		1996
-----	-----	--	------

TEAM ASSISTS - SEASON

10.	89		1997
-----	----	--	------

SHUOUTS - SEASON

24.	12		2009
-----	----	--	------

TEAM POINTS PER GAME - SEASON

15.	12.43		1996
-----	-------	--	------

TEAM GOALS PER GAME - SEASON

20.	4.35		1996
-----	------	--	------

TEAM ASSISTS PER GAME - SEASON

7.	4.05		1997
13.	3.74		1996

COACHING WINS - ALL-TIME

25.	Michele Madison		312
-----	-----------------	--	-----

COACHING WINS - ACTIVE COACHES

9.	Michele Madison		312
----	-----------------	--	-----

^ Career stats also include two seasons at Boston U.



**INTERNATIONAL
COMPETITION
(BY YEAR)**

Champions' Trophy, 1997
Meridith Thorpe

World Cup, 1998
Lori Mastropietro
Michelle Vizzuso

Pan Am Games, 1999
Michelle Vizzuso

Olympic Qualifier, 2000
Michelle Vizzuso

Pan Am Games, 2003
Jessica Coleman

Junior World Cup, 2005
Katherine Blair
Mia Link

Junior Pan Am Games, 2008
Tara Puffenberger
Paige Selenski

Junior World Cup, 2009
Tara Puffenberger
Paige Selenski
Michelle Vittese

European Tour, 2010
Paige Selenski
Michelle Vittese

Four Nations Tournament, 2011
Paige Selenski
Michelle Vittese

European Tour, 2011
Rachel Jennings
Tara Puffenberger

Champions Challenge, 2011
Paige Selenski
Michelle Vittese

**Pan American Games, 2011
(GOLD MEDAL)**
Paige Selenski
Michelle Vittese

Olympic Games, 2012
Paige Selenski
Michelle Vittese

**SENIOR HIGH PERFORMANCE AND
WOMEN'S NATIONAL CHAMPIONSHIPS (BY YEAR)**

1998
Yellow
Lori Mastropietro
Julia Richardson
Ellen Wiese
Missi Sanders, head coach

White
Michelle Vizzuso
Liz Lopez

Blue
Meredith Elwell
Becky Worthington

Purple
Amy Broadwater

Red
Laura Lindsay

Green - National Champions
Francis West

1999
Metro Rush
Katie Nicholson
Jessica Coleman
Southern Charm
Leyf Pierce

2000
Metro Rush
Michelle Vizzuso
Jessica Coleman

Tidewater Tempest
Emily White

2001
Philadelphia Fury
Katie Jo Gerfen
Dana Anderson

New England Eclipse
Emily White

2002
Tidewater Tempest
Emily White

2003
Tidewater Tempest
Katherine Blair
Logan Carr
Biffy Cornelison
Lindsey Selfridge
Philadelphia Fury
Dana Anderson
Julianne Bojanic
Sarah Miller
Allison Flynn

2004
Philadelphia Fury
Logan Carr
Dana Anderson
Julianne Bojanic
Aly Curmaci
Allie Flynn
Mia Link
Lindsey Selfridge
Tidewater Tempest
Katie Jo Gerfen
USA Junior National Team -Champions
Katherine Blair

2005
USA Junior National Team - Champions
Katherine Blair
Mia Link

2006
Maryland - Champions
Katherine Blair
Mia Link

2007
Maryland
Mia Link
Traci Ragukas
South
Kaitlyn Hiltz

2008
Pennsylvania
Paige Selenski

Maryland
Shelly Edmonds
Kaitlyn Hiltz

New Jersey
Mia Link
Michelle Vittese

2009
Mid-Atlantic
Rachel Jennings
Mia Link
Traci Ragukas
Paige Selenski
New Jersey - Champions
Michelle Vittese
Pennsylvania
Tara Puffenberger

2010
Mid-Atlantic
Rachel Jennings
Kim Kastuk
Mia Link
Tara Puffenberger
Paige Selenski
Michelle Vittese
2011
Mid-Atlantic
Hadley Bell
Haley Carpenter
Kim Kastuk
Paige Selenski
Michelle Vittese

2012
Mid-Atlantic
Kim Kastuk
Paige Selenski
Carissa Vittese
Michelle Vittese
Pennsylvania
Rachel Sumfest

2013
Mid-Atlantic/South - Champions
Paige Selenski
Carissa Vittese
Michelle Vittese
Pennsylvania
Rachel Sumfest





NATIONAL HONORS AND AWARDS



ALL-AMERICANS BY YEAR

YEAR	NAME	TEAM
1990	Amanda Cromwell	2nd
1991	Amanda Cromwell	1st
	Andrea Rubio	1st
1992	Andrea Rubio	1st
1993	Kim Conway	2nd
1979	Cindy Carzo	2nd
1983	Cheryl Gleason	HM
1985	Elaine Maddox	HM
1987	Tracy Whitehurst	HM
1990	Andy Begel	2nd
1992	Kelly Daddona	2nd
1993	Kelly Daddona	2nd
1994	Kristen Daddona	3rd
	Meredith Elwell	3rd
1995	Meridith Thorpe	1st
	Michelle Vizzuso	3rd
1996	Meridith Thorpe	1st
	Michelle Vizzuso	2nd
	Michelle Cusimano	3rd
	Heather Hale	3rd
1997	Meridith Thorpe	1st
	Michelle Vizzuso	1st
	Lori Mastropietro	3rd
1998	Lori Mastropietro	1st
	Michelle Vizzuso	1st
	Meridith Thorpe	2nd
1999	Jessica Coleman	3rd
2000	Jessica Coleman	3rd
2001	Carrie Goodloe	2nd
2003	Katie Jo Gerfen	3rd
2004	Mia Link	3rd
2006	Inge Kaars Sijpesteijn	1st
2007	Inge Kaars Sijpesteijn	3rd
2008	Paige Selenski	2nd
	Inge Kaars Sijpesteijn	3rd
2009	Paige Selenski	1st
	Michelle Vittese	3rd
	Inga Stöckel	2nd
2010	Paige Selenski	1st
	Michelle Vittese	1st
	Elly Buckley	3rd
2011	Elly Buckley	2nd
2012	Paige Selenski	1st
	Michelle Vittese	1st
	Elly Buckley	2nd

NCAA WOMAN OF THE YEAR

1999 Peggy Boutilier

HONDA AWARD SEMIFINALIST

2009 Paige Selenski

2010 Paige Selenski

NCAA ALL-TOURNAMENT TEAM

2009 Paige Selenski

Michelle Vittese

2010 Rachel Jennings

Paige Selenski

TEAM NFHCA REGIONAL PLAYER OF THE YEAR

2009 Paige Selenski
2012 Paige Selenski

NFHCA ALL-REGION TEAM

YEAR	NAME	TEAM
1984	Cheryl Gleason	
	Missy Farwell	
1985	Elaine Maddox	1st
	Lindsay Sheehan	1st
	Susan Crafts	HM
	Missy Farwell	HM
	Natalie Wheatall	HM
1986	Donna DeNoble	1st
	Elaine Maddox	1st
1987	Donna DeNoble	1st
	Tracy Drummond	1st
	Tracy Whitehurst	1st
	Kristen Aceto	HM
1988	Tracy Whitehurst	1st
	Andy Begel	HM
1989	Kristen Aceto	1st
	Andy Begel	1st
	Heather Christman	HM
	Jill Dunham	HM
	Julie Plzak	HM
1990	Andy Begel	1st
	Heather Christman	1st
	Heather Goehringer	1st
	Kelly Daddona	HM
1991	Kelly Daddona	1st
	Cherie Greer	1st
	Denise Wernersbach	1st
1992	Kelly Daddona	1st
	Tara Kelly	1st
	Nicole McNichol	2nd
	Denise Wernersbach	2nd
1993	Kelly Daddona	
	Barbara King	
	Nicole McNichol	
1994	Kristen Daddona	1st
	Barbara King	1st
	Peggy Boutilier	2nd
	Jen Larsen	2nd
	Heidi Waterman	2nd
1995	Heather Hale	1st
	Meridith Thorpe	1st
	Michelle Vizzuso	1st
	Peggy Boutilier	2nd
	Jen Larsen	2nd
1996	Meridith Thorpe	1st
	Michelle Vizzuso	1st
	Heather Hale	1st
	Meredith Elwell	2nd
	Michelle Cusimano	2nd
	Lori Mastropietro	2nd
	Nicole McMaster	2nd
1997	Lori Mastropietro	1st
	Meridith Thorpe	1st
	Michelle Vizzuso	1st
	Kara Ariza	2nd
	Peggy Boutilier	2nd
	Lorraine Vizzuso	2nd
1998	Lori Mastropietro	1st
	Meridith Thorpe	1st
	Michelle Vizzuso	1st
	Meredith Elwell	1st
	Kara Ariza	2nd
	Frances West	2nd
	Lorraine Vizzuso	2nd

1999	Jessica Coleman	1st
	Meredith Elwell	1st
	Lorraine Vizzuso	1st
	Laura Lindsay	2nd
	Julia Richardson	2nd
	Becky Worthington	2nd
2000	Lorraine Vizzuso	1st
	Becky Worthington	1st
	Jessica Coleman	2nd
	Carrie Goodloe	2nd
	Julia Richardson	2nd
2001	Jessica Coleman	1st
	Carrie Goodloe	1st
	Katie Jo Gerfen	2nd
2002	Emily White	2nd
2003	Katie Jo Gerfen	1st
2004	Mia Link	1st
	Katie Jo Gerfen	2nd
2005	Katherine Blair	2nd
	Allison Flynn	2nd
	Mia Link	2nd
2006	Inge Kaars Sijpesteijn	1st
	Mia Link	2nd
	Traci Ragukas	2nd
2007	Inge Kaars Sijpesteijn	2nd
	Traci Ragukas	2nd
2008	Inge Kaars Sijpesteijn	1st
	Paige Selenski	1st
	Traci Ragukas	2nd
	Michelle Vittese	2nd
	Floor Vogels	2nd
2009	Paige Selenski	1st
	Inga Stöckel	1st
	Michelle Vittese	1st
	Kim Kastuk	2nd
	Charlotte van den Broek	2nd
2010	Elly Buckley	1st
	Rachel Jennings	1st
	Paige Selenski	1st
	Michelle Vittese	1st
	Haley Carpenter	2nd
	Kim Kastuk	2nd
	Tara Puffenberger	2nd
2011	Elly Buckley	1st
	Rachel Jennings	2nd
2012	Paige Selenski	1st
	Michelle Vittese	1st
	Jenny Johnstone	1st
	Elly Buckley	1st
	Rachel Sumfest	2nd
	Carissa Vittese	2nd



ALL-ACC

1985	Missy Farwell Elaine Maddox Lindsay Sheehan
1986	Tracy Drummond Elaine Maddox
1987	Donna DeNoble Tracy Drummond
1988	Tracy Whitehurst
1989	Kristen Aceto Andy Begel
1990	Andy Begel
1991	Cherie Greer
1992	Kelly Daddona
1992	Tara Kelly
	Nicole McNichol
1993	Kelly Daddona Nicole McNichol Heidi Waterman
1994	Kristen Daddona Barbara King Heidi Waterman
1995	Peggy Boutilier Heather Hale Meridith Thorpe
1996	Meridith Thorpe Michelle Vizzuso Heather Hale
1997	Lori Mastropietro Meridith Thorpe Michelle Vizzuso
1998	Lori Mastropietro Meridith Thorpe Michelle Vizzuso
1999	Jessica Coleman Lorraine Vizzuso
2000	Jessica Coleman
2002	Emily White
2003	Katie Jo Gerfen
2004	Mia Link
2006	Inge Kaars Sijpesteijn
2007	Inge Kaars Sijpesteijn
2008	Inge Kaars Sijpesteijn Paige Selenski
2009	Paige Selenski Inga Stöckel Michelle Vittese
2010	Elly Buckley Paige Selenski Michelle Vittese
2011	Elly Buckley
2012	Elly Buckley Jenny Johnstone Paige Selenski Michelle Vittese

ACC ALL-TOURNAMENT TEAM

1990	Andy Begel Heather Goehringer
1991	Kelly Daddona Cherie Greer
1992	Kelly Daddona Kelly Hood Tara Kelly
1993	Kelly Daddona
1994	Peggy Boutilier Kristen Daddona
1995	Michelle Cusimano Meridith Thorpe
1996	Meridith Elwell Nicole McMaster
1997	Lori Mastropietro Becky Worthington
1998	Lori Mastropietro Michelle Vizzuso Lorraine Vizzuso
1999	Julia Richardson Becky Worthington
2000	Julia Richardson Lorraine Vizzuso Becky Worthington
2001	Carrie Goodloe Mason White
2002	Cara Unterkofler
2003	Mia Link
2004	Logan Carr
2006	Inge Kaars Sijpesteijn Traci Ragukas
2007	Inge Kaars Sijpesteijn Traci Ragukas
2008	Traci Ragukas
2009	Paige Selenski Inga Stöckel Charlotte van den Broek
2010	Michelle Vittese
2012	Katie Robinson

ACC PLAYER OF THE YEAR

1998	Lori Mastropietro
2012	Paige Selenski (offensive)

ACC FRESHMAN OF THE YEAR

1995	Meridith Thrope
1996	Meridith Elwell
2008	Paige Selenski

ACC COACH OF THE YEAR

1997	Missi Sanders
------	---------------

ACC SCHOLAR-ATHLETE OF THE YEAR

1983-84	Mary Jo Adams
1988-89	Lesley Groff
1993-94	Kelly Daddona
1996-97	Heather Hale
1997-98	Peggy Boutilier
1998-99	Lori Mastropietro

ACC 50TH ANNIVERSARY TEAM

(announced in 2002)

Cindy Carzo
Jessica Coleman
Kristen Daddonna
Carrie Goodloe
Lori Mastropietro
Meridith Thrope
Michelle Vizzuso
Becky Worthington



FIELD HOCKEY TEAM AWARD

(given at annual All Athletics Banquet)

- 1973-74 Claudia Reasor
- 1974-75 Candy Lindsey
- 1975-76 Kathy Devereux
- 1976-77 Cindy Hook
- 1977-78 Kathy Smith
- 1978-79 Julia Morris, Cecilia Bean
- 1979-80 Cindy Carzo
- 1980-81 Leslie Larson
- 1981-82 Ann Orrison
- 1982-83 Ann Orrison
- 1983-84 Cheryl Gleason
- 1984-85 Cheryl Gleason
- 1985-86 Susan Crafts
- 1986-87 Elaine Maddox
- 1987-88 Tracy Drummond
- 1988-89 Lesley Groff
- 1989-90 Kristen Aceto
- 1990-91 Heather Christman
- 1991-92 Bonnie Rosen
- 1992-93 Tara Kelly
- 1993-94 Kelly Daddona
- 1994-95 Barbara King
- 1995-96 Meredith Thorpe
- 1996-97 Heather Hale, Meredith Thorpe
- 1997-98 Peggy Boutilier
- 1998-99 Lori Mastropietro
- 1999-00 Julia Richardson
- 2000-01 Becky Worthington
- 2001-02 Emily White
- 2002-03 Jessica Coleman
- 2003-04 Katie Jo Gerfen
- 2004-05 Mia Link
- 2005-06 Erin Hayes
- 2006-07 Inge Kaars Sijpesteijn
- 2007-08 Katherine Bounds
- 2008-09 Inge Kaars Sijpesteijn
- 2009-10 Haley Carpenter
- 2010-11 Paige Selenski
- 2011-12 Hadley Bell, Rachel Jennings
- 2012-13 Paige Selenski, Michelle Vittese

JETTIE HILL MEMORIAL AWARD

Top GPA, Female Fourth-Year

- 1988-89 Lesley Groff
- 1996-97 Heather Hale

ACC'S WEAVER-JAMES-CORRIGAN POSTGRADUATE SCHOLARSHIP

- 1994 Denise Wernersbach
- 1998 Peggy Boutilier
- 1999 Melissa Hayes
- 2000 Michelle Vizzuso
- 2001 Lorraine Vizzuso

MASSMUTUAL UVA SCHOLARSHIP

- 2001-02 Carrie Goodloe

BOB GOODMAN MEMORIAL AWARD

- 1987-88 Maribel Taylor

CRAIG FIELDER MEMORIAL AWARD

- 2000-01 Lorraine Vizzuso
- 2008-09 Paige Selenski

RALPH SAMPSON SCHOLARSHIP

- 1996-97 Peggy Boutilier
- 2012-13 Elly Buckley

SAM OF THE YEAR AWARD

- 1997-98 Peggy Boutilier

ERNEST H. ERN, JR. AWARD

- 1997-98 Peggy Boutilier

IMP AWARD

Outstanding Female Athlete at UVA

- 1975-76 Amy Easter
- 1976-77 Kathy Smith
- 1985-86 Lindsay Sheehan
- 1986-87 Elaine Maddox
- 1989-90 Jill Dunham
- 1996-97 Meredith Thorpe
- 1997-98 Peggy Boutilier





ACADEMIC ACCOLADES



NCAA ELITE 88 AWARD

2009 Lauren Elstein

ACADEMIC ALL-DISTRICT

2009 Lauren Elstein 2nd

NFHCA NATIONAL ACADEMIC TEAM

1987 Lesley Groff
 1988 Lesley Groff
 1992 Denise Wernersbach
 1993 Denise Wernersbach
 1994 Michelle Cusimano
 Heather Hale
 Barbara King
 Nicole McMaster
 1995 Peggy Boutilier
 Heather Hale
 Nicole McMaster
 1996 Peggy Boutilier
 Heather Hale
 Lori Mastropietro
 Nicole McMaster
 Frances West
 1997 Peggy Boutilier
 Melissa Hayes
 Laura Lindsay
 Lori Mastropietro
 Frances West
 1998 Amy Broadwater
 Melissa Hayes
 Laura Lindsay
 Lori Mastropietro,
 Frances West
 Becky Worthington
 1999 Carrie Goodloe
 Laura Lindsay
 Kristy Sott
 Becky Worthington
 2000 Carrie Goodloe
 Kristy Sott
 Becky Worthington
 2001 Carrie Goodloe
 2002 Katherine Blair
 Cara Unterkofler
 Emily White
 2003 Katherine Blair
 Alyssa Curmaci
 2004 Katherine Blair
 Allie Breininger
 Carmen Hoskin
 2005 Katherine Blair
 2006 Katherine Blair
 Katherine Bounds
 Lauren Elstein
 Mia Link
 Kelsey Vonier
 2007 Katherine Bounds
 Lauren Elstein
 Laura Nelson
 Kelsey Vonier
 2008 Lauren Elstein
 Rachel Jennings
 Floor Vogels
 2009 Lauren Elstein
 Rachel Jennings
 Charlotte van den Broek
 Floor Vogels
 Phoebe Willis

2010 Liza Blue
 Elly Buckley
 Elizabeth Hanks
 Katie Robinson
 Lane Smith
 2011 Elizabeth Hanks
 Lane Smith
 Jess Orrett
 Katie Robinson
 Sallie Seiy
 Phoebe Willis
 2012 Hadley Bell
 Elizabeth Hanks
 Jenny Johnstone
 Lane Smith
 Katie Robinson
 Phoebe Willis

ALL-ACC ACADEMIC TEAM

2005 Katherine Blair
 Allison Flynn
 Mia Link
 2006 Katherine Blair
 Katherine Bounds
 Biffy Cornelison
 Mia Link
 Traci Ragukas
 2007 Katherine Bounds
 Lauren Elstein
 2008 Lauren Elstein
 Rachel Jennings
 Floor Vogels
 2009 Kim Kastuk
 Inga Stöckel
 Charlotte van den Broek
 Floor Vogels
 2010 Elly Buckley
 Rachel Jennings
 2011 Rachel Jennings
 Jenny Johnstone
 Hadley Bell
 Chloe Pendlebury
 Lane Smith
 Rachel Sumfest
 2012 Hadley Bell
 Maddie DeCerbo
 Jenny Johnstone
 Katie Robinson
 Rachel Sumfest

ACC ACADEMIC HONOR ROLL

1984 Mary Jo Adams
 Wendy Bortle
 Paddi Dean
 Barbara Deutsch
 Mary Farwell
 Jean Gordon
 Julie Robinson
 Dru Scheifele
 Carole Wagner
 Natalie Wheatall
 1985 Lee Cooper
 Paddi Dean
 Mary Farwell
 Amy Feldkamp
 Cheryl Gleason
 Sue Lombardi
 Julie Robinson
 Laua Sullivan
 Carole Wagner
 Natalie Wheatall
 1986 Susan Day
 Mary Farwell
 Sue Lombardi
 Carole Wagner
 Natalie Wheatall
 1987 Susan Day
 Donna DeNoble
 Sheryl Deutsch
 Lesley Groff
 Dana Henry
 Susie Williams
 1988 Heather Christman
 Sheryl Deutsch
 Lesley Groff
 Dana Henry
 Becky Lewis
 Sue Lombardi
 Elizabeth Nolley
 Barbara Richards
 Susie Williams
 1989 Sheryl Deutsch
 Lesley Groff
 Elizabeth Nolley
 Robin Nye
 Barbara Richards
 Tracy Whitehurst
 Susie Williams
 1990 Kristen Aceto
 Lyndia Brumback
 Stacey Chaplin
 Heather Christman
 Sheryl Deutsch
 Robin Nye
 1991 Stacey Chaplin
 Heather Christman
 Katherine Hanson
 Tara Kelly
 Cynthia Mathes
 Robin Nye
 Bonnie Rosen
 Denise Wernersbach

1992 Kelly Daddona
 Elaine Jones
 Tara Kelly
 Tara Lauria
 Nicole McNichol
 Christina Miller
 Lisa Plzak
 Bonnie Rosen
 Denise Wernersbach
 Kelly Daddona
 1993 Tara Kelly
 Christina Miller
 Lisa Plzak
 Denise Wernersbach
 1994 Hadley Bauer
 Amy Clothier
 Michelle Cusimano
 Christine Grunewald
 Heather Hale
 Barbara King
 Nicole McMaster
 Peggy Boutilier
 1995 Amy Broadwater
 Michelle Cusimano
 Kristen Daddona
 Christine Grunewald
 Heather Hale
 Julie Jakum
 Barbara King
 Stacy Kuhlkin
 Nicole McMaster
 Lisa Plzak
 Kara Ariza
 1996 Kara Ariza
 Peggy Boutilier
 Amy Broadwater
 Michelle Cusimano
 Christine Grunewald
 Heather Hale
 Melissa Hayes
 Julie Jakum
 Jennifer Larsen
 Lori Mastropietro
 Nicole McMaster
 Michelle Vizzuso
 Frances West
 1997 Amy Broadwater
 Natalie Crane
 Michelle Cusimano
 Heather Hale
 Laura Lindsay
 Lori Mastropietro
 Nicole McMaster
 Michelle Vizzuso
 Frances West
 1998 Kara Ariza
 Amy Broadwater
 Natalie Crane
 Laura Lindsay
 Lorraine Vizzuso
 Ellen Weise
 Frances West
 Becky Worthington



ACC ACADEMIC HONOR ROLL (CONT.)

1999	Kara Ariza Amy Broadwater Natalie Crane Carrie Goodloe Laura Lindsay Lori Mastropietro Meridith Thorpe Lorraine Vizzuso Frances West Becky Worthington	2007	Katherine Bounds Lauren Elstein Jamie Mulhare
2000	Natalie Crane Meredith Elwell Carrie Goodloe Laura Lindsay Julia Richardson Lorraine Vizzuso Cara Unterkofler Emily White Courtney Wilson Becky Worthington	2008	Lauren Elstein Rachel Jennings Adrienne Ostroff Floor Vogels
2001	Abigail Crawford Carrie Goodloe Kelli Hill Lorraine Vizzuso Emily White Mason White Becky Worthington	2009	Shelly Edmonds Lauren Elstein Kaitlyn Hiltz Rachel Jennings Adrienne Ostroff Boyd Vicars Phoebe Willis
2002	Katherine Blair Logan Carr Katie Jo Gerfen Kelli Hill Cara Unterkofler Emily White	2010	Hadley Bell Liza Blue Elly Buckley Elizabeth Hanks Rachel Jennings Kim Kastuk Adrienne Ostroff Katie Robinson Lane Smith Phoebe Willis
2003	Katherine Blair Logan Carr Katie Jo Gerfen Kelli Hill Sarah Miller Lindsey Selfridge Cara Unterkofler Rosemary Walker Emily White	2011	Rachel Jennings Hadley Bell Chloe Pendlebury Lane Smith Jenny Johnstone Rachel Sumfest
2004	Katherine Blair Katherine Bounds Allie Breininger Allie Flynn Carmen Hoskin Mia Link Sarah Miller Lindsay O'Bannon Katie Phillips Lindsey Selfridge	2012	Hadley Bell Tollie Bell Elly Buckley Maddie DeCerbo Elizabeth Hanks Jenny Johnstone Britt Knouse Kelsey LeBlanc Jess Orrett Katie Robinson Lane Smith Carissa Vittese Michelle Vittese Phoebe Willis
2005	Katherine Blair Allie Flynn		
2006	Katherine Blair Katherine Bounds Biffy Cornelison Mia Link Traci Ragukas		



SERIES RECORDS



Opponent	W	L	T	Streak
Albany	0	0	0	
American	1	1	0	L1
Appalachian State	6	0	0	W6
Ball State	2	0	0	W2
Boston College	9	6	0	L1
Boston University	2	4	0	W1
Bridgewater	7	2	1	W6
Bucknell	1	0	0	W1
Cal State - Long Beach	0	1	0	L1
California	2	2	0	L1
California - Davis	1	0	0	W1
Central Michigan	3	1	0	L1
Clemson	2	0	0	W2
Connecticut	0	3	0	L3
Cornell	3	1	0	W3
Dartmouth	2	0	0	W2
Davidson	4	0	0	W4
Davis & Elkins	6	4	0	W2
Delaware	7	6	1	W3/U5
Drexel	1	0	0	W1
Duke	31	16	0	W1
Eastern Kentucky	3	0	0	W3
Eastern Mennonite	2	0	1	W2/U3
Georgetown	6	0	0	W6
Goucher	3	0	0	W3
High Point	1	0	0	W1
Hofstra	1	0	0	W1
Hollins	5	0	2	W
Indiana	1	0	0	W1
Iowa	3	2	0	W3
James Madison	29	12	1	L1
Kent State	3	0	0	W3
Lafayette	1	0	0	W1
Liberty	0	0	0	
Longwood	17	2	1	W10
Louisville	3	1	0	W1
Loyola	4	1	0	W2
Lynchburg	9	3	1	W8

Opponent	W	L	T	Streak
Maine	1	0	0	W1
Mary Washington	3	1	1	W3/U4
Maryland	20	38	2	L1
Massachusetts	3	4	1	L2
Miami (Ohio)	7	0	0	W7
Michigan	3	2	0	L2
Michigan State	4	2	0	W1
Monmouth	1	0	0	W1
New Hampshire	3	3	2	W2
North Carolina	16	48	0	L5
UNC-Greensboro	1	0	0	W1
Northeastern	4	1	0	L2
Northwestern	7	3	0	L1
Ohio	5	0	0	W5
Ohio State	10	1	0	W5
Old Dominion	12	33	0	W1
Oregon	1	0	0	W1
Pacific	2	0	0	W2
Penn	1	0	0	W1
Penn State	5	15	0	W1
Princeton	4	5	0	L3
Providence	4	0	0	W4
Purdue	1	0	0	W1
Quinnipiac	3	0	0	W3
Radford	24	0	0	W24
Randolph-Macon	2	0	1	W2/U3
Richmond	32	4	1	W7
Roanoke	4	1	1	W4/U5
Rutgers	1	0	0	W1
Saint Francis	1	0	0	W1
Saint Joseph's	5	1	0	W3
Saint Louis	2	0	0	W2
Southern Connecticut	0	1	0	L1
Southern Illinois	3	0	0	W3
Southwest Missouri St.	3	0	0	W3
Springfield	3	0	0	W3
Stanford	1	0	0	W1
Sweet Briar	2	0	1	W2/U3

Opponent	W	L	T	Streak
Syracuse	2	0	0	W2
Temple	1	2	0	W2
Towson	13	0	0	W13
Ursinus	1	0	0	W1
Virginia Commnwth	29	0	0	W29
Vermont	2	0	0	W2
Villanova	11	1	0	W4
Virginia Tech	13	2	1	W7
Wake Forest	19	16	0	W2
West Chester	1	3	0	W1
William & Mary	26	14	2	W3
Winthrop	1	0	0	W1
Yale	3	0	0	W3

Bold indicates 2013 opponents



YEAR-BY-YEAR SUMMARY



Year	Overall Record	ACC Record	Head Coach	Postseason
1973	0-4-7		Chesley Garrett	
1974	7-3-2		Dr. Diane Wakat	
1975	12-2-1		Linda Southworth	
1976	14-3-2		Linda Southworth	
1977	16-2-1		Linda Southworth	AIAW Regional
1978	19-3-0		Linda Southworth	AIAW Semifinals
1979	15-4-0		Linda Southworth	AIAW Regional
1980	11-7-0		Linda Southworth	AIAW Regional
1981	17-6-0		Linda Southworth	AIAW Quarterfinals
1982	14-5-0		Linda Southworth	NCAA First Round
1983	11-9-0	1-1	Jane Miller	
1984	11-8-0	0-3	Jane Miller	NCAA Quarterfinals
1985	12-7-0	2-1	Jane Miller	NCAA First Round
1986	10-7-1	1-1-1	Jane Miller	
1987	13-6-0	3-1*	Jane Miller	NCAA First Round
1988	8-10-0	0-3	Jane Miller	
1989	12-6-0	2-1	Jane Miller	
1990	13-6-2	1-2	Jane Miller	
1991	10-6-4	0-2-1	Jane Miller	
1992	15-6-1	2-2	Julie Dayton	NCAA First Round
1993	10-8-0	2-2	Missi Sanders	
1994	10-11-0	4-4	Missi Sanders	
1995	13-9-0	3-5	Missi Sanders	NCAA First Round
1996	18-5-0	5-3	Missi Sanders	NCAA Quarterfinals
1997	19-3-0	4-0*	Missi Sanders	NCAA Semifinals
1998	18-5-0	4-0*	Missi Sanders	NCAA Semifinals
1999	13-8-0	1-3	Jessica Wilk	NCAA First Round
2000	14-8-0	1-3	Jessica Wilk	NCAA First Round
2001	14-8-0	2-2	Jessica Wilk	NCAA Quarterfinals
2002	9-11-0	0-4	Jessica Wilk	
2003	10-10-0	0-4	Jessica Wilk	
2004	10-10-0	0-4	Jessica Wilk	
2005	8-11-0	0-5	Jessica Wilk	
2006	14-8-0	1-4	Michele Madison	NCAA Quarterfinals
2007	11-10-0	1-4	Michele Madison	NCAA First Round
2008	14-9-0	2-3	Michele Madison	NCAA Quarterfinals
2009	20-4-0	3-2	Michele Madison	NCAA Semifinals
2010	18-4-0	3-2	Michele Madison	NCAA Semifinals
2011	8-12-0	1-4	Michele Madison	
2012	16-6-0	4-1	Michele Madison	NCAA Quarterfinals

TOTALS **508-270-21**
ACC **52-72-2**

* finished first in regular season

MILESTONE GAMES

Game	Date	Opponent	Result
1	9-29-73	Roanoke	L, 0-2
100	9-25-79	Bridgewater	W, 7-0
200	9-12-84	VCU	W, 3-0
300	10-6-89	Duke	W, 3-2
400	10-1-94	Duke	W, 1-0
500	11-20-98	Old Dominion	L, 0-3
600	10-14-03	Cornell	W, 4-0
700	10-04-08	Maryland	L, 4-3
800	09-01-13	Penn State	

HOME GAMES PLAYED

Game	Date	Opponent	Result
1	9-29-73	Roanoke	L, 0-2
50	9-25-81	Maryland	W, 3-2
100	9-18-87	Maryland	W, 2-1
150	10-21-92	American	W, 3-1
200	9-10-98	Northeastern	W, 5-3
250	9-17-03	James Madison	W, 3-2
300	9-22-07	Boston College	L, 1-2
350	09-28-12	Maryland	W, 3-2

WINS

Game	Date	Opponent	Result
1	10-3-74	Hollins	2-1
50	9-21-78	Longwood	4-1
100	9-29-81	Richmond	6-0
150	9-14-85	@ Davis & Elkins	6-1
200	10-15-89	Delaware	1-0
250	11-2-93	Delaware	4-2
300	10-1-97	William & Mary	3-1
350	10-13-00	Georgetown	3-1
400	8-28-05	Ball State	7-1
500	9-23-12	Boston U. (at Harvard)	2-0

VIRGINIA COACHING HISTORY

Head Coach	Seasons	Years	Record	Pct.
Chesley Garrett	1	1973	0-4-7	.318
Dr. Diane Wakat	1	1974	7-3-2	.666
Linda Southworth	8	1975-1982	118-32-4	.781
Jane Miller	9	1983-1991	100-65-7	.602
Julie Dayton	1	1992	15-6-1	.705
Missi Sanders	6	1993-98	88-41-0	.704
Jessica Wilk	6	1999-2005	78-66-0	.542
Michele Madison	7	2006-present	101-53-0	.653
Totals	37	1973-2010	508-270-21	.648



YEAR-BY-YEAR RESULTS



1973 (0-4-7)

Coach: Chesley Garrett

S29	Roanoke	2-0	L
O3	Hollins	1-1	T
O5	Bridgewater	1-1	T
O9	Lynchburg	1-0	L
O12	Virginia Tech	2-0	L
O18	Randolph-Macon	0-0	T
O20	Eastern Mennonite	0-0	T
O25	Sweet Briar	1-1	T
O31	Mary Washington	4-1	L
N3	Virginia Tech^	0-0	T
N3	Lynchburg^	1-1	T

^ Blue Ridge Tournament - Hollins, Va.

1974 (7-3-2)

Coach: Dr. Diane Wakat

S21	Mary Washington	1-1	T
S25	Roanoke	1-1	T
O1	Bridgewater	3-2	L
O3	Hollins	2-1	W
O11	Lynchburg	5-1	L
O16	Virginia Commonwealth	2-0	W
O19	Virginia Tech	6-0	W
O22	Sweet Briar	6-1	W
O28	Randolph-Macon	2-0	W
N1	Bridgewater^	2-1	W
N2	Lynchburg^	2-1	L
N2	Virginia Tech^	5-0	W

^ Blue Ridge Tournament - Sweet Briar, Va.

1975 (12-2-1)

Coach: Linda Southworth

S30	Bridgewater	2-0	L
O6	Longwood	2-1	W
O13	Randolph-Macon	8-0	W
O16	Lynchburg	2-0	W
O21	Sweet Briar	8-0	W
O23	Hollins College	1-1	T
O28	Lynchburg	4-0	W
N4	Virginia Commonwealth	2-1	W
N5	Westhampton	5-1	W
N7	Madison ^	2-0	W
N7	Roanoke^	2-0	W
N8	Bridgewater^	1-0	W
N8	Lynchburg^	2-0	W
N14	Longwood%	3-2	L
N15	Eastern Kentucky%	2-1	W

^ Blue Ridge Tournament - Hollins, Va.
% AIAW Southern Regional II Tournament - Fredericksburg, Va.

1976 (14-3-2)

AIAW National Quarterfinals
Coach: Linda Southworth

S28	Mary Washington	6-1	W
O5	Virginia Commonwealth	1-0	W
O8	Goucher	6-0	W
O13	Longwood	2-2	T
O16	Virginia Tech	1-0	W
O19	Bridgewater	4-0	W
O22	North Carolina	3-1	W
O25	Old Dominion	3-1	W
N2	William & Mary	1-1	T
N5	Virginia Tech^	2-0	W
N5	Roanoke^	4-0	W
N6	Bridgewater^	1-0	W
N6	Madison^\$	0-0	W
N12	Eastern Kentucky%	7-0	W
N12	Longwood%	3-1	W
N13	William & Mary%	1-0	L
N24	Central Michigan#	3-1	W
N25	Delaware#\$	2-2	LPT
N25	So. Connecticut#	2-1	L

\$ Tie broken by penetration time
^ Blue Ridge Tournament - Hollins, Va.
% AIAW Region II Tournament - Winthrop, S.C.
AIAW National Tournament - Valley Forge, Pa.

1977 (16-2-1)

Coach: Linda Southworth

S22	Longwood	1-0	W
S27	Bridgewater	2-1	W
S30	Goucher	3-0	W
O4	James Madison	1-1	T
O7	North Carolina	3-2	W
O8	UNC-Greensboro	5-1	W
O11	Lynchburg	6-0	W
O18	Mary Washington	2-1	W
O21	Towson State	1-0	W
O22	Virginia Tech	3-0	W
O25	Old Dominion	2-0	W
O27	Westhampton	5-2	W
O29	Maryland	2-1	W
N1	William & Mary	1-0	W
N4	Virginia Tech^	2-1	WPS
N5	James Madison^	1-0	L
N11	William & Mary%	3-2	LPS
N12	Winthrop%	3-0	W
N12	Louisville%	2-0	W

^ Blue Ridge Tournament - Hollins, Va.
% AIAW Region II Tournament - Williamsburg, Va.

1978 (19-3-0)

AIAW National Quarterfinals
Coach: Linda Southworth

S21	Longwood	4-1	W
S26	Bridgewater	6-0	W
S29	Maryland	2-1	W
S30	Goucher	13-0	W
O3	Lynchburg	5-0	W
O6	Hollins	2-0	W
O12	James Madison	4-1	W
O14	Eastern Mennonite	5-0	W
O18	Roanoke	3-0	W
O21	Virginia Tech	2-1	LPS
O24	Old Dominion	3-1	W
O26	Richmond	3-0	W
O31	William & Mary	2-0	W
N3	Mary Washington~	4-0	W
N3	William & Mary~	1-0	WPS
N4	Old Dominion~	1-0	W
N10	Hollins%	1-0	W
N10	High Point%	1-0	W
N11	North Carolina%	1-0	W
N21	Oregon#	1-0	W
N22	West Chester#	2-1	L
N22	California State Long Beach#	1-0	L

~ State Tournament - Farmville, Va.
% AIAW Region II Tournament -Hollins, Va.
USFHA-AIAW National Tournament - Ellensburg, Wash.

1979 (15-4-0)

Coach: Linda Southworth

S20	Longwood	4-2	W
S25	Bridgewater	7-0	W
S29	Towson State	3-1	W
O2	Lynchburg	3-0	W
O6	North Carolina	1-0	WPS
O11	Eastern Mennonite	5-0	W
O13	James Madison	1-0	WPS
O17	Roanoke	2-0	W
O19	Virginia Tech	4-3	W2OT
O20	Louisville	5-0	W
O23	Old Dominion	3-0	W
O23	Richmond	4-0	W
O30	William & Mary	1-0	L
N2	Virginia Tech~	1-0	W
N3	James Madison~	4-3	LPS
N8	Maryland	3-2	LPS
N16	E. Kentucky%	1-0	W
N16	James Madison%(ps)	2-1	W
N17	William & Mary%	1-0	L

~ Virginia State Tournament - Harrisonburg, Va.
% AIAW Region II Tournament - Williamsburg, Va.

1980 (11-7-0)

Coach: Linda Southworth

S19	Lynchburg	5-0	W
S23	Longwood (ps)	5-4	L
S26	Maryland	2-1	L
S27	Towson State	2-0	W
O2	Hollins	6-0	W
O4	North Carolina	2-0	W
O8	James Madison	2-0	W
O11	Richmond	2-0	W
O16	Virginia Tech	1-0	W
O18	Penn State	2-0	L
O21	Old Dominion	5-0	L
O28	William & Mary	2-0	L
O31	Longwood~	2-0	W
N1	William & Mary~	4-1	L
N1	James Madison~ (ps)	2-1	W
N7	Clemson%	2-0	W
N7	William & Mary%	3-0	L
N8	North Carolina%	5-0	W

~VAIAW State Tournament- Charlottesville, Va.
%AIAW Region II Tournament - High Point, N.C.

1981 (17-6-0)

AIAW National Tournament
Coach: Linda Southworth

S11	Connecticut+	4-0	L
S12	Ohio State+	4-0	W
S18	Lynchburg	2-0	W
S22	Longwood	3-0	W
S25	Maryland	3-2	W
S26	Towson State	7-0	W
S29	Richmond	6-0	W
O1	Hollins	8-0	W
O3	North Carolina	4-0	W
O7	James Madison (ot)	3-2	W
O10	Delaware	2-1	L
O13	Clemson (ps)	1-0	W
O15	Virginia Tech	2-0	W
O21	Old Dominion	1-0	L
O25	Penn State	3-0	L
O27	William & Mary	1-0	W
O30	Longwood~	3-0	W
O31	James Madison~	2-0	W
N6	Duke%	2-0	W
N7	North Carolina%	1-0	W
N19	Davis & Elkins (ot)#	1-0	L
N20	California#	3-0	L
N21	Dartmouth (ot) #	3-2	W

+ Storrs, Conn.
~ VAIAW State Tournament - Harrisonburg, Va.
% AIAW Region II Tournament - Blacksburg, Va.
AIAW National Tournament - Berkeley, Calif.

1982 (14-5-0)

NCAA Tournament
Coach: Linda Southworth

S10	Ohio State	2-0	W
S17	Lynchburg	6-1	W
S21	Longwood	8-1	W
S24	Maryland	5-1	W
S25	Towson State	4-1	W
S29	North Carolina	2-0	L
O4	Virginia Commonwealth	7-0	W
O6	James Madison	3-2	W
O9	Delaware	3-1	L
O12	Richmond	4-0	W
O16	Duke	5-1	W
O17	Maryland	2-0	W
O23	Penn State	1-0	W
O26	William & Mary	2-1	W
O29	Virginia Tech	2-1	W
O30	Purdue	2-1	W
N3	Old Dominion	2-0	L
N6	Davis & Elkins	2-1	L
N13	Northwestern #	4-2	L

NCAA Tournament - Norfolk, Va.



YEAR-BY-YEAR RESULTS



1983 (11-9-0, 1-1 ACC)

Coach: Jane Miller

S15	Virginia Commonwealth	1-0	W
S21	Virginia Tech	6-0	W
S23	Maryland	1-0	W
S27	Davis & Elkins	3-1	L
S30	North Carolina	1-0	L
O1	Delaware	5-4	W
O5	James Madison	3-2	L
O8	West Chester+	2-0	L
O9	Springfield	1-0	W
O12	Richmond	3-0	W
O15	Maryland*	2-1	L
O16	Wake Forest*	8-0	W
O18	William & Mary	2-1	WOT
O21	Southern Illinois	2-0	W
O23	Penn State	1-0	L
O28	Temple	5-0	L
N1	Old Dominion	5-1	L
N4	Virginia Tech~	3-0	W
N4	James Madison ~	1-0	LOT
N5	Virginia Commonwealth~	1-0	W

+ Springfield, Mass.

* ACC Tournament - Chapel Hill, N.C.

~ Virginia Intercollegiate League Championship - Williamsburg, Va.

1984 (11-8-0, 0-3 ACC)

NCAA Quarterfinals

Coach: Jane Miller

S7	Boston College	2-1	L2OT
S9	Massachusetts	3-2	L
S12	Virginia Commonwealth	3-0	W
S17	Davis & Elkins	2-0	W
S21	Maryland	3-2	L
S25	Richmond	1-0	W
S27	Radford	8-1	W
S29	Delaware	1-0	W
O3	James Madison	3-1	W
O6	North Carolina	3-0	L
O7	Duke	1-0	L
O11	Southern Illinois	2-0	W
O18	Old Dominion	5-0	L
O26	Villanova	4-3	W2OT
O30	Penn State	2-1	W
N3	Maryland*	1-0	W
N4	North Carolina*	2-1	L
N10	North Carolina#	2-1	WPS
N11	Old Dominion#	10-0	L

* ACC Tournament - Charlottesville, Va.

NCAA Tournament - Norfolk, Va.

1985 (12-7-0, 2-1 ACC)

NCAA First Round

Coach: Jane Miller

S7	Springfield	3-1	W
S8	Massachusetts	2-1	L
S11	Virginia Commonwealth	5-0	W
S14	Davis & Elkins	6-1	W
S20	Maryland	5-2	W
S24	Richmond	4-0	W
O6	Delaware	2-1	L
O8	North Carolina	3-2	L
O13	Boston University	1-0	L
O16	Old Dominion	2-1	W
O20	Duke	4-0	W
O24	William & Mary (ot)	2-1	W
O26	Villanova	4-1	W
O29	Radford	4-3	W
N2	Maryland*	2-1	W
N3	North Carolina*	4-0	L
N7	James Madison	2-1	W
N9	Penn State	3-1	L
N16	Old Dominion#	3-1	L

* ACC Tournament - Chapel Hill, N.C.

NCAA Tournament - Chapel Hill, N.C.

1986 (10-7-1, 1-1-1 ACC)

Coach: Jane Miller

S6	Springfield	3-1	W
S7	Massachusetts	4-0	L
S10	Virginia Commonwealth	2-0	W
S14	Penn State	2-0	L
S16	Davis & Elkins	4-0	W
S19	Maryland	1-1	T
S23	Richmond	2-1	W
S25	Radford	2-0	W
O1	James Madison	1-0	L
O4	Delaware	4-0	L
O8	North Carolina	5-0	L
O9	Duke	2-1	WOT
O15	Old Dominion	2-1	L
O17	So. Illinois	5-0	W
O19	Maine	2-1	W
O21	William & Mary	1-0	W
O26	Villanova	2-0	W
O31	Maryland*	3-0	L

*ACC Tournament - College Park, Md.

1987 (13-6-0, 3-1 ACC)

ACC Regular Season Champions

NCAA First Round

Coach: Jane Miller

S11	Ohio State	2-1	W
S13	Massachusetts+	4-3	WOT
S15	Davis & Elkins	3-0	L
S18	Maryland	2-1	W
S22	Richmond	2-1	W
S24	Radford	3-1	W
S27	Wake Forest	5-0	W
S30	James Madison	2-1	W
O6	North Carolina	4-0	L
O10	Duke	4-1	W
O14	Old Dominion	2-0	L
O17	Delaware	1-0	W
O21	William & Mary	1-0	W
O23	Towson State	8-0	W
O25	Villanova	2-1	W
O28	Loyola	3-1	W
O31	Maryland*	5-2	L
N7	Penn State	3-1	L
N14	Old Dominion#	4-0	L

+ Norfolk, Va.

* ACC Tournament - Chapel Hill, N.C.

NCAA First/Second rnds - Chapel Hill, N.C.

1988 (8-10-0, 0-3 ACC)

Coach: Jane Miller

S9	Boston College	1-0	L
S11	New Hampshire +	2-1	L
S16	Maryland	4-1	L
S18	Wake Forest	5-0	W
S20	Richmond	2-0	W
S22	Radford	7-0	W
S25	Penn State	2-1	L
S28	James Madison	3-2	W
O2	West Chester	2-1	L
O8	Duke	1-0	L
O9	North Carolina	8-0	L
O12	Old Dominion	4-2	L
O15	Delaware	3-1	L
O19	William & Mary	3-1	W
O23	Villanova	3-1	W
O26	Loyola	7-0	W
O29	North Carolina *	5-0	L
N3	Davis & Elkins	9-1	W

+ Chestnut Hill, Mass.

* ACC Tournament - Charlottesville, Va.

1989 (12-6-0, 2-1 ACC)

Coach: Jane Miller

S9	Southwest Missouri St. +	2-1	W
S10	Ohio State	3-1	W
S13	Maryland	2-0	W
S16	New Hampshire ~	3-0	L
S19	Richmond	2-1	WOT
S21	Radford ^	1-0	W
S26	James Madison	3-2	W2OT
S28	North Carolina	4-0	L
O3	Virginia Commonwealth	1-0	W
O6	Duke	3-2	W2OT
O9	Providence	3-1	W
O12	Old Dominion	1-0	L
O15	Delaware	1-0	W
O18	William & Mary	1-0	L
O20	Towson State	5-1	W
O22	Villanova	4-0	W
O25	Loyola	3-2	LOT
O28	Maryland *	3-2	L

+ Columbus, Ohio

~ Norfolk, Va.

^ Blacksburg, Va.

* ACC Tournament - Durham, N.C.

1990 (13-6-2, 1-2 ACC)

Coach: Jane Miller

S2	Central Michigan	3-2	WOT
S8	St. Louis	1-0	W
S9	Michigan+	1-0	W
S13	Maryland	2-1	W2OT
S15	Miami^	1-0	W
S16	New Hampshire ^	0-0	T
S18	Richmond	1-0	W
S20	Radford	4-1	W
S25	James Madison	2-1	W
S30	Penn State	6-0	L
O2	Virginia Commonwealth	2-0	W
O7	Duke	2-1	L
O10	Old Dominion	6-1	L
O13	Delaware	0-0	T
O17	William & Mary	1-0	L
O19	Towson State	5-0	W
O21	Villanova	3-0	W
O24	Loyola	3-0	W
O27	Hofstra%	6-0	W
O28	North Carolina	2-1	L
N3	Duke*	2-1	L

+ St. Louis, Mo.

^ Durham, N.C.

% Chapel Hill, N.C.

*ACC Tournament - College Park, Md.

1991 (10-6-4, 0-2-1 ACC)

Coach: Jane Miller

S7	New Hampshire +	2-2	T
S8	Boston College	1-0	W
S12	Maryland	1-1	T
S15	Delaware	1-0	WOT
S17	Richmond	5-0	W
S19	Radford	2-1	W
S22	Michigan	3-0	W
S24	James Madison	1-0	W
S29	Penn State	4-1	L
O2	Virginia Commonwealth	4-1	W
O4	Pacific	2-0	W
O6	Duke	1-0	L
O10	Old Dominion	9-0	L
O16	William & Mary	0-0	T
O20	Villanova	1-0	L
O27	North Carolina	3-0	L
O30	Loyola	5-0	W
N2	Massachusetts%	1-1	T
N8	Wake Forest*	6-0	W
N9	Maryland*	2-0	L

+ Chestnut Hill, Mass.

% College Park, Md.

* ACC Tournament - Chapel Hill, N.C.



YEAR-BY-YEAR RESULTS



1992 (15-6-1, 2-2 ACC)

NCAA First Round

Coach: Julie Dayton

S11	Maryland	3-1	L
S12	Delaware +	2-1	W
S15	Richmond	3-3	T
S17	Radford	1-0	W
S22	James Madison	2-0	W
S27	New Hampshire	3-1	W
S30	Virginia Commonwealth	2-1	W
O2	Massachusetts%	4-1	L
O7	Old Dominion	9-0	L
O10	Providence ^	2-1	W2OT
O11	Ohio State	3-2	W2OT
O14	William & Mary	3-0	W
O17	Saint Joseph's	2-0	W
O18	Villanova	2-1	WOT
O21	American	3-1	W
O25	Duke	2-1	W
O31	North Carolina	6-1	L
N1	Wake Forest	4-3	WOT
N4	James Madison	3-2	W
N6	Wake Forest*	2-1	W
N7	North Carolina*	5-0	L
N12	Duke#	4-2	L

+ College Park, Md.

% Norfolk, Va.

^ Columbus, Ohio

*ACC Tournament - Winston-Salem, N.C.

NCAA First/Second rnds - Chapel Hill N.C.

1993 (10-8-0, 2-2 ACC)

Coach: Missi Sanders

S4	Iowa+	6-0	L
S5	Temple+	3-2	L
S8	Richmond	2-1	WOT
S14	Radford	4-0	W
S18	Syracuse^	2-1	W
S19	Princeton^	2-0	L
S21	James Madison	2-1	L
S24	Maryland	3-1	L
O3	North Carolina	3-1	L
O9	Duke	1-0	W
O13	William & Mary	2-1	WOT
O15	Old Dominion	2-0	L
O19	Virginia Commonwealth	3-2	WOT
O21	Villanova	3-0	W
O24	Saint Joseph's	2-1	WOT
O30	Wake Forest	4-0	W
N2	Delaware	4-2	W
N6	North Carolina*	2-0	L

+ Iowa City, Iowa ^ Princeton, N.J.

*ACC Tournament - Winston-Salem, N.C.

1994 (10-11, 4-4 ACC)

Coach: Missi Sanders

S3	Ohio State	2-3	L2OT
S4	New Hampshire+	3-2	L
S7	Richmond	4-0	W
S11	Iowa	1-0	W2OT
S14	Radford	2-0	W
S17	Duke∅	3-1	W
S18	Wake Forest %	1-0	W
S21	James Madison	3-1	L
S25	Old Dominion	4-1	L
S28	Maryland	2-1	W
O1	Duke	1-0	W
O2	North Carolina	4-0	L
O8	Saint Joseph's	1-2	LOT
O9	Villanova	1-0	W
O12	Virginia Commonwealth	3-0	W
O16	North Carolina	3-2	L
O18	William & Mary	2-1	L
O26	Princeton	2-1	W
O28	at Wake Forest	2-1	L
O29	Maryland^	3-0	L
N5	Maryland*	1-0	L

+ Columbus, Ohio % College Park, Md.

^ Winston-Salem, N.C.

* ACC Tournament - Charlottesville, Va.

1995 (13-9-0, 3-5 ACC)

NCAA First Round

Coach: Missi Sanders

S2	Davidson	5-0	W
S4	Miami	2-0	W
S8	Northeastern	3-1	W
S13	Radford	4-0	W
S16	Wake Forest	3-2	WOT
S17	Appalachian State^	11-0	W
S20	James Madison	3-2	L2OT
S23	North Carolina	1-0	L
S24	Old Dominion	2-1	W2OT
S29	Maryland	1-0	L
O1	Duke	1-0	W
O4	William & Mary	3-2	L
O7	Villanova	7-0	W
O8	Saint Joseph's	2-1	WOT
O13	North Carolina	5-2	L
O15	Duke	2-0	L
O18	Maryland	3-2	L
O21	Wake Forest	1-0	W
O26	Virginia Commonwealth	8-0	W
O29	Richmond	3-1	W
N4	Maryland*	1-0	L
N9	Old Dominion#	2-1	LOT

^Winston-Salem, N.C.

*ACC Tournament - College Park, Md.

NCAA First/Second Rounds - Norfolk, Va.

1996 (18-5-0, 5-3 ACC)

NCAA Quarterfinals

Coach: Missi Sanders

A31	Richmond	5-0	W
S7	Maryland	3-0	W
S11	Radford	8-1	W
S13	Northwestern~	4-2	W
S15	Northeastern	3-2	W
S18	Davis & Elkins	13-0	W
S21	North Carolina	4-0	L
S25	James Madison	6-1	W
S28	Wake Forest	3-0	W
O2	William & Mary	4-1	W
O5	Duke	2-1	W
O9	Georgetown	8-2	W
O12	North Carolina	1-0	L
O13	Towson State	4-0	W
O16	Maryland	1-0	W
O19	Wake Forest	2-0	W
O20	Davidson^	13-0	W
O27	Old Dominion	4-0	W
O30	Virginia Commonwealth	9-1	W
N2	Duke	3-2	L2OT
N9	Maryland*	1-2	L
N16	Duke#	4-1	W
N17	North Carolina#	2-1	L

~ Boston, Mass.

^ Winston-Salem, N.C.

* ACC Tournament - Durham, N.C.

NCAA First/Second rnds - Chapel Hill, N.C.

1997 (19-3-0, 4-0 ACC)

ACC Regular Season Champions

NCAA Semifinals

Coach: Missi Sanders

A30	Davidson	11-0	W
A31	Richmond	8-0	W
S7	Ball State+	3-0	W
S13	Northwestern	2-0	W
S14	Miami	4-0	W
S17	Davis & Elkins	9-0	W
S19	North Carolina	2-0	W
S24	James Madison	4-1	W
S28	Old Dominion	2-0	L
O1	William & Mary	3-1	W
O5	Maryland	3-2	W
O8	Georgetown	5-0	W
O12	Saint Louis	5-0	W
O16	Virginia Commonwealth	6-0	W
O19	North Carolina	2-1	W
O25	Wake Forest	5-2	W
O26	Appalachian State^	9-0	W
N2	Duke	5-1	W
N8	Duke (ot)*	2-1	W
N9	North Carolina*	2-0	L
N16	Penn State#	4-2	W
N21	Old Dominion!	3-2	L

+ College Park, Md.

^ Winston-Salem, N.C.

* ACC Tournament - Chapel Hill, N.C.

NCAA First/Second Rounds - Charlottesville, Va.

! NCAA Semifinals - Storrs, Conn.

1998 (18-5-0, 4-0 ACC)

ACC Regular Season Champions

NCAA Semifinals

Coach: Missi Sanders

A31	Richmond	5-0	W
S5	Ohio State+	3-1	W
S7	Northwestern+	3-1	W
S10	Northeastern	5-3	W
S12	Massachusetts	2-0	W
S13	Appalachian State	9-0	W
S16	Richmond	6-1	W
S20	North Carolina	3-0	L
S23	James Madison	2-1	L
S27	Old Dominion	4-2	L
O4	Maryland	3-2	W
O7	Virginia Commonwealth	5-1	W
O9	Davidson	9-0	W
O14	Georgetown	6-1	W
O18	North Carolina	2-1	W
O21	William & Mary	2-1	W
O24	Wake Forest	6-0	W
O28	Radford	3-1	W
O31	Duke	2-1	W
N6	Wake Forest*	1-0	W
N8	Maryland*	0-1	LOT
N14	Kent#	4-2	W
N15	Maryland#	5-1	W
N20	Old Dominion!	3-0	L

+ ACC-Big Ten Challenge - Fenton, Mo.

* ACC Tournament - Charlottesville, Va.

NCAA First/Second Rounds - College Park, Md.

! NCAA Semifinals - Philadelphia, Pa.



YEAR-BY-YEAR RESULTS



1999 (13-8-0, 1-3 ACC)

NCAA First Round

Coach: Jessica Wilk

S4	Massachusetts	WOT	2-1
S5	Quinnipiac +	W	7-0
S10	Michigan	WOT	3-2
S12	Towson	W	9-0
S15	Richmond	W	2-0
S19	North Carolina	L	1-0
S23	Georgetown	W	6-1
S26	Old Dominion	LOT	3-2
S29	William & Mary	W2OT	3-2
O2	Maryland	L	3-2
O6	Virginia Commonwealth	W	4-0
O10	Yale %	W	5-0
O13	James Madison	L	3-2
O17	North Carolina	L	2-0
O20	Radford	W	4-2
O23	Wake Forest	L	8-1
O24	Appalachian State^	W	10-0
O31	Duke	WOT	3-2
N4	Duke*	W	2-0
N5	Maryland*	L	2-0
N13	Old Dominion #	L	3-0

+ Amherst, Mass. % Fairfield, Conn.

^ Winston-Salem, N.C.

* ACC Tournament - Charlottesville, Va.

NCAA First/Second Rounds - College Park, Md.

2000 (14-8-0, 1-3 ACC)

NCAA First Round

Coach: Jessica Wilk

S3	Penn State+	L	3-1
S4	Ohio State+	W	2-0
S7	Richmond	W	3-0
S8	Northwestern	W	2-0
S17	North Carolina	L	3-1
S24	Old Dominion	L	5-1
S27	William & Mary	W	6-1
O1	Maryland	L	5-0
O4	Virginia Commonwealth	W	6-0
O7	West Chester^	W	1-0
O8	Ursinus%	W	6-0
O11	James Madison	W	3-2
O13	Georgetown	W	3-1
O15	North Carolina	L	3-0
O18	Radford	W	5-0
O22	Wake Forest	L	3-2
O27	Duke	WOT	3-2
O28	Yale~	W	2-1
N2	Duke*	WOT	2-1
N3	North Carolina*	WPS	2-1
N5	Maryland*	L	3-0
N11	Connecticut#	L	2-1

+ ACC-Big Ten Challenge - Fenton, Mo.

^ Philadelphia, Pa. % Villanova, Pa.

~ Durham, N.C.

* ACC Tournament - College Park, Md.

NCAA First/Second rounds - Norfolk, Va.

2001 (14-8-0, 2-2 ACC)

NCAA Quarterfinals

Coach: Jessica Wilk

A31	Michigan	L	2-0
S2	Central Michigan%	W	7-1
S8	Ohio	WOT	3-2
S9	Southwest Missouri St.+	W	4-0
S19	Richmond	W	2-0
S23	Old Dominion	L	3-2
S26	Virginia Commonwealth	W	2-0
S30	Maryland	WPS	3-2
O3	William & Mary	L	2-1
O4	Appalachian State	W	4-0
O7	Ohio State	W	2-1
O10	James Madison	WOT	2-1
O13	North Carolina	L	4-1
O17	Radford	W	3-0
O21	Wake Forest	L	3-0
O24	Georgetown	W	5-0
O25	North Carolina	L	3-0
O28	Duke	WOT	2-1
N1	Duke*	W	3-1
N2	Maryland*	L	4-1
N10	Ohio State#	WOT	2-1
N11	Wake Forest#	L	5-1

% Ann Arbor, Mich. + Athens, Ohio

* ACC Tournament - Chapel Hill, N.C.

NCAA First/Second Rounds - Winston-Salem, N.C.

2002 (9-11, 0-4 ACC)

Coach: Jessica Wilk

A31	Ohio (o	WOT	3-2
S6	Northwestern	W	1-0
S8	Southwest Missouri St.%	W	1-0
S13	William & Mary	W2OT	2-1
S15	James Madison	L	3-1
S18	Richmond	L	2-1
S22	North Carolina	L	3-1
S27	California at Berkeley	W	3-2
S29	Old Dominion	L	5-4
O2	Radford	W	5-0
O6	Maryland	L	3-2
O9	Virginia Commonwealth	W	2-1
O13	North Carolina	W	1-0
O18	Dartmouth+	L	2-1
O19	Cornell	L2OT	2-1
O23	Towson	W	5-1
O27	Wake Forest	L	2-0
N1	Duke	L	4-2
N2	Michigan ^	L	5-0
N7	Duke*	L	5-2

% Evanston, Ill. + Ithaca, N.Y. ^ Durham, N.C.

* ACC Tournament - Durham, N.C.

2003 (10-10-0, 0-4 ACC)

Coach: Jessica Wilk

S1	Northeastern	W	4-2
S5	Princeton	L	3-1
S7	Drexel+	WOT	2-1
S10	Longwood	W	5-0
S12	Virginia Commonwealth	W	2-1
S17	James Madison	W	3-2
S21	at North Carolina	L	5-1
S24	Richmond	L	1-0
S28	ODU	L	4-1
O1	William & Mary	LOT	4-3
O4	Maryland	L	3-2
O8	Radford	W	4-0
O10	Quinnipiac	W	2-1
O12	North Carolina	L	6-0
O14	Cornell	W	4-0
O19	Saint Francis	W	10-0
O26	Wake Forest	L	5-1
O31	Boston College	W	4-3
N2	Duke	L	6-1
N6	Maryland*	L	5-1

+ Princeton, N.J.

* ACC Tournament - Charlottesville, Va.

2004 (10-10-0, 0-4 ACC)

Coach: Jessica Wilk

A28	Bucknell	8-2	W
A29	Appalachian State	3-0	W
S5	Michigan State	6-2	L
S6	Miami	3-2	WOT
S10	Boston College%	4-3	W
S12	Quinnipiac%	4-1	W
S15	at Richmond	2-1	L
S19	at North Carolina	4-0	L
S22	at James Madison	3-2	WOT
S26	at ODU	4-3	L
S29	William & Mary	5-4	L
O2	Maryland	5-0	L
O6	Longwood	8-0	W
O10	Princeton	2-1	W
O13	Radford	3-0	W
O15	Virginia Commonwealth	4-0	W
O17	North Carolina	2-1	L
O24	Wake Forest	3-2	L
O30	at Duke	3-0	L
N4	at Wake Forest*	5-1	L

% at Bentley College - Waltham, Mass.

* ACC Tournament - Winston-Salem, N.C.

2005 (8-11-0, 0-5 ACC)

Coach: Jessica Wilk

A27	at Virginia Commonwealth	3-0	W
A28	Ball State	7-1	W
S3	at ODU	4-0	L
S10	Central Michigan+	2-1	LOT
S11	at Northwestern	4-3	L2OT
S16	James Madison	4-3	WOT
S18	Monmouth	5-0	W
S21	at William & Mary	1-0	W
S25	Boston College	1-0	L
S28	Longwood	3-1	W
O1	at Maryland	4-1	L
O5	Radford	2-0	W
O8	Penn	2-1	W
O16	North Carolina	3-1	L
O19	at American	1-2	LOT
O22	at Wake Forest	1-0	L
O26	Richmond	1-0	L
O30	Duke	4-0	L
N3	Duke*	5-1	L

+ Evanston, Ill.

* ACC Tournament - College Park, Md.

2006 (14-8-0, 1-4 ACC)

NCAA First Round

Coach: Michele Madison

A26	Indiana	3-2	W
S1	Ohio	3-1	W
S3	ODU	3-2	L
S6	Radford	5-0	W
S7	Northwestern	3-2	W
S15	VCU	3-1	W
S17	at UNC	2-1	W
S20	William & Mary	3-1	W
S22	at Boston College	1-0	L
S24	at Boston University	2-1	L
S27	at Richmond	5-3	W
S29	Maryland	5-1	L
O5	Pacific	4-2	W
O11	at James Madison	3-2	WOT
O17	Longwood	3-0	W
O20	Stanford	3-2	WOT
O22	Wake Forest	1-2	LOT
O28	at Duke	3-1	L
N2	Boston College*	2-1	W
N3	Maryland*	5-2	L
N11	Iowa!	1-0	W
N12	at Wake Forest!	3-2	L

*ACC Tournament - Chapel Hill, N.C.

! NCAA First/Second Rounds - Winston-Salem, N.C.



YEAR-BY-YEAR RESULTS



2007 (11-10-0, 1-4)

NCAA First Round

Coach: Michele Madison

A26 Penn State	3-1	L
A30 Richmond	4-3	W
S2 at Old Dominion	3-1	L
S8 at New Hampshire	2-0	W
S9 at Vermont	2-1	W
S14 William & Mary	2-1	W
S16 James Madison	3-1	W
S22 Boston College	2-1	L
S23 Boston University	3-0	L
S29 at Maryland	4-0	L
O4 California	3-0	W
O6 Rutgers%	2-1	W
O7 at Louisville	2-1	LOT
O10 Radford	6-1	W
O14 North Carolina	3-0	L
O17 at Longwood	3-1	W
O20 at Wake Forest	3-0	L
O27 Duke	5-3	W
N1 Boston College*	3-2	WOT
N2 North Carolina*	3-0	L
N10 Penn State!	3-2	L

% Louisville, Ky.

* ACC Tournament - Chestnut Hill, Mass.

! NCAA First/Second Rounds - College Park, Md.

2008 (14-9-0, 2-3 ACC)

NCAA Tournament

Coach: Michele Madison

A29 William & Mary	5-0	W
A31 Providence	4-1	W
S5 Vermont	7-2	W
S7 Old Dominion	2-0	W
S10 at James Madison	1-0	LOT
S13 Kent State	4-2	W
S14 Louisville	4-2	W
S18 VCU	3-0	W
S21 Ohio	2-1	WOT
S26 at Boston College	2-1	W2OT
S28 vs. Boston University	3-2	LPS
O1 Richmond	7-1	W
O4 Maryland	4-3	LOT
O11 vs. Iowa%	3-2	L
O12 at Penn State	1-0	L
O16 Longwood	5-0	W
O18 at North Carolina	3-0	L
O25 Wake Forest	6-2	L
N1 at Duke	4-3	W
N6 vs. Duke*	5-2	W
N7 vs. Maryland*	3-2	LOT
N15 vs. James Madison!	2-1	W
N16 at Wake Forest!	4-3	L

% University Park, Pa.

* ACC Tournament - Durham, N.C.

! NCAA First/Second rnds - Winston-Salem, N.C.

2009 (20-4-0, 3-2 ACC)

NCAA Semifinals

Coach: Michele Madison

A28 Miami (Ohio)	7-0	W
A30 Penn State	1-0	W
S4 at Providence	2-1	W
S7 at Old Dominion	1-0	W
S11 at Kent State	8-2	W
S13 at Ohio University	5-0	W
S17 at William & Mary	4-1	W
S20 Michigan State	3-0	W
S25 Boston University	2-0	W
S27 Boston College	2-0	W
S30 at Richmond	4-3	W
O2 at Maryland	3-1	L
O10 Cornell	3-0	W
O11 Wake Forest	3-2	WOT
O13 at Longwood	7-0	W
O17 North Carolina	2-1	LOT
O24 at Wake Forest	2-0	W
O31 Duke	2-1	W
N5 Duke*	3-1	W
N6 North Carolina*	1-0	W
N8 Maryland*	3-2	LOT
N14 Richmond!	3-0	W
N15 Michigan State!	3-2	WOT
N20 vs. North Carolina#	3-2	L

* ACC Tournament - Charlottesville, Va.

! NCAA First/Second Rounds - Charlottesville, Va.

NCAA Semifinals - Winston-Salem, N.C.

2010 (18-4-0, 3-2 ACC)

NCAA Semifinals

Coach: Michele Madison

A28 St. Joseph's	4-0	W
A29 Penn State	3-0	W
S5 Old Dominion	5-2	W
S6 Northwestern	2-0	W
S11 Ohio State	4-2	WOT
S12 Syracuse	2-1	WOT
S18 Lafayette	4-0	W
S24 Boston College	3-2	WOT
S26 Cornell	5-2	W
O1 Maryland	2-1	LOT
O6 Longwood	2-0	W
O8 Princeton	2-1	W
O16 North Carolina	3-2	L
O18 William & Mary	3-0	W
O23 Wake Forest	4-1	W
O24 Radford	8-0	W
O30 Duke	2-1	W
N4 Duke*	2-1	W
N5 North Carolina*	1-0	LOT
N13 Michigan State!	3-2	WOT
N14 Princeton!	4-2	W
N19 North Carolina#	4-3	LOT

* ACC Tournament - Winston-Salem, N.C.

! NCAA First/Second Rounds - Charlottesville, Va.

NCAA Semifinals - Winston-Salem, N.C.

2011 (8-12-0, 1-4 ACC)

Coach: Michele Madison

A26 VCU	8-1	W
A28 Penn State	3-0	L
S2 vs. Towson	4-2	W
S4 at Old Dominion	4-1	L
S7 at James Madison	3-0	W
S9 at Miami (Ohio)	2-1	W
S10 vs. Michigan State	3-0	L
S17 vs. California	4-3	LOT
S18 at Northwestern	5-3	L
S23 Boston College	5-4	L2OT
S25 Richmond	3-2	W
S30 at Maryland	6-3	L
O6 vs. UC Davis	8-1	W
O7 at Princeton	2-1	L
O9 vs. Connecticut	2-1	L
O5 North Carolina	7-2	L
O7 at William & Mary	4-3	W
O22 at Wake Forest	5-0	L
O29 Duke	3-2	WPS
N3 vs. Duke*	3-2	L

* ACC Tournament - College Park, Md.

2012 (16-6-0, 4-1 ACC)

NCAA Quarterfinals

Coach: Michele Madison

A24 at Temple	4-3	WOT
A26 at Penn State	3-2	L
A29 Richmond	6-1	W
A31 Towson	14-0	W
S02 Old Dominion	5-4	W
S07 at Michigan State	2-1	W2OT
S08 vs Northeastern%	3-2	L
S11 at William & Mary	2-0	W
S15 Miami (Ohio)	6-1	W
S21 at Boston College	3-1	W
S23 vs. Boston U.^	2-0	W
S28 Maryland	3-2	W
S30 Saint Joseph's	6-3	W
O06 Yale	4-0	W
O07 New Hampshire	7-0	W
O13 at North Carolina	3-2	LOT
O20 Wake Forest	4-0	W
O27 at Duke	3-1	W
O28 Princeton	2-1	L
N02 Maryland*	5-1	L
N10 Iowa!	3-2	W
N11 Princeton!	5-2	L

% East Lansing, Mich. ^ Cambridge, Mass.

* ACC Tournament - Chapel Hill, N.C.

! NCAA First/Second Rounds - Charlottesville, Va.



A

Kristen Aceto.....1987-88-89
Mary Adams (C).....1983
Dana Anderson.....2002-03-04-05
Kara Ariza.....1995-96-97-98

B

Valerie Baumann (M).....1980
Emily Beach.....2001
Beth Beale (M).....1976
Cecilia Bean (C).....1975-76-77-78
Andrea Bear.....1974
Andrea Begel.....1987-88-89-90
Grace Beggs.....1980
Mimi Beggs.....1977-78-79
Hadley Bell.....2010-11-12
Alice Bingman (M).....1992
Sue Black (C).....1978-79-80
Katherine Blair.....2003-04-05-06
Nancy Bloom.....1973
Liza Blue.....2010
Julianne Bojanic.....2001-02-03-04
Wendy Bortle (C).....1981-82-83
Katherine Bounds.....2004-05-06-07
Peggy Boutilier.....1994-95-96-97
Abby Brackbill.....1977-78-79-80
Amy Breeden.....1981
Amy Breen.....1990
Allison Breininger.....2005
Fenna Breitbarth.....2006-07
Amy Broadwater.....1994-95-97-98
Amy Brockman.....1982-83
Taylor Brown.....2012
Elly Buckley (C).....2010-11-12
Devon Burnley.....2007-08
Juanita Buster.....1973

C

Jackie Campbell.....1979-80-81-82
Lynn Campbell.....1982
Haley Carpenter (C).....2007-08-09-10
Logan Carr.....2001-02-03-04
Cindy Carzo (C).....1976-77-78-79
Stacey Chaplin.....1989-90
Heather Christman.....1988-89-90
Jo Anne Chopka.....1973-74
Jessica Coleman.....1998-99-00-01
Carol Compton.....1973
Sara Confer.....2005-06-07
Biffy Cornelison.....2003-04-05-06
Su Cox.....1975-76
Susan Crafts.....1983-84-85
Natalie Crane.....1996-97-98
Abby Crawford.....1999-00
Amanda Crider.....2010-11-12
Alyssa Curmaci.....2003-04-05-06
Michelle Cusimano (C).....1994-95-96

D

Kelly Daddona (C).....1990-91-92-93
Kristen Daddona (C).....1991-92-93-94
Sarah Darling (M).....1985-86
Katherine Darnell (M).....1984
Susan Day.....1986
Maddie DeCerbo.....2011-12
Donna DeNoble.....1986-87
Amy Desjaton.....2005-06-07-08
Barb Deutsch.....1980-81-82-83
Sheryl Deutsch.....1986-87-88-89
Kathy Devereux.....1973-74-75-76
Heather Dow (C).....1981
Tracy Drummond (C).....1984-85-86-87
Jill Dunham (C).....1987-88-89

E

Amy Easter (C).....1975-76
Shelly Edmonds.....2007-08-09-10
Margaretha Ehret.....2005
Lauren Elstein (C).....2006-07-08-09
Meredith Elwell.....1996-97-98

F

Missy Farwell.....1984-85
Donna Firer (M).....1973
Allison Flynn.....2002-03-04-05

G

Katie Jo Gerfen (C).....2000-01-03-04
Leigh Giacco.....2005
Cheryl Gleason (C).....1981-82-83-84
Heather Goehringer.....1989-90-91
Carrie Goodloe (C).....1998-99-00-01
Jean Gordon.....1983
Wendy Graham.....1989-90
Cherie Greer.....1991
Lesley Groff.....1986-87-88
Christine Grunwald.....1995

H

Ashleigh Haas.....2001
Heather Hale (C).....1994-95-96
Elizabeth Hanks.....2011-12
Katherine Hansen.....1991
Erin Hayes.....2003-04-05-06
Melissa Hayes.....1995-96-97-98
Dana Henry.....1988
Mary Henry (C).....1980-81-82
Kelli Anne Hill.....1999-00-01-02
Kaitlyn Hiltz.....2007-08-09-10
Liz Hiltz.....2005-06-08
Rebecca Holden.....2012
Kelly Hood.....1993-94-96
Cindy Hook.....1973-74-75-76
Carmen Hoskin.....2005
Pien Hulsebosch.....2008

I

Anne Cabot Ishon.....2005-06

J

Debbie Jackson (C).....1974-75
Alex Jahnle.....2008-09-10-11
Julie Jakum.....1994
Rachel Jennings (C).....2008-09-10-11
Jenny Johnstone.....2011-12
Elaine Jones.....1988-89-90-91
Erin Jones.....1996-97-98

K

Inge Kaars Sijpesteijn (C).....2006-07-08
Jamezetta Karickhoff (M).....1976-77
Kim Kastuk.....2009-10
Tara Kelly (C).....1990-91-92
Christie Kellam.....2005
Barbara King (C).....1994
Katie Knapp.....2009
Britt Knouse.....2009-10-11-12
Alison Kutzer (C).....1992-94-95

L

Jennifer Landsman.....2000
Jennifer Larsen (C).....1992-94-95
Leslie Larson.....1978-79-80
Noreen Lavan (C).....1975-76-77
Shannon LaVigne.....2000-01-02-03
Kelsey LeBlanc.....2011-12
Rebecca Lewis (C).....1984-85-86-87
Laura Lindsay.....1996-97-98
Candy Lindsey.....1973-74
Mia Link.....2003-04-05-06
Susan Lombardi (C).....1984-86-87
Liz Lopez.....1997-98
Cindy Lunsford.....1992

M

Elaine Maddox (C).....1983-84-85-86
Lori Mastropietro.....1995-96-97-98
Amy Marotta.....2004-05
Sharon Marsee (M).....1981
Cynthia Mathes.....1988-89-90
Jennifer McCallum.....2003-04
Beth McGee.....1980-81-82
Patty McKenna.....1981-82
Molly McManus.....1999-00-01
Nicole McMaster.....1994-95-96
Nicole McNicol.....1990-91-92
Lucy Meyers (C).....2005-06-07-08
Christine Miller.....1991-92
Sarah Miller (C).....2002-03-04-05
Julia Morris (C).....1976-77-78
Loretta Moy (M).....1978
Jamie Mulhare.....2007-08

N

Melissa Nathanson.....1983-84-85-86
Nancy Newman.....1973-74-75-76
Katie Nicholson.....2000-01-02-03
Liz Nolley.....1988-89
Robyn Nye.....1988-89-90



O

Lindsay O'Bannon 2003-04-05-06
Jess Orrett **2011-12**
 Ann Orrison (C).....1980-81-82
 Adrienne Ostroff 2008-09-10-11

P

Kemp Passano1977-78-79
 Lynne Peddy1974-75
Chloe Pendlebury **2010-11-12**
 Katie Phillips (C)..... 2002-03-04-05
 Julie Plzak 1986-87-88-89
 Lisa Plzak1992
 Megan Ponessa.....2004
 Tara Puffenberger2009-10

Q

Karen Quashnock (C)1973

R

Traci Ragukas (C)..... 2006-07-08-09
 Francie Rawlings..... 1981
 Kimberly Ray..... 1988-89-90-91
 Claudia Reasor1973
 Barbara Richards (C)1986-87-88
 Julia Richardson (C) 1997-98-99-00
 Julie Robinson (C).....1983-84-85
Katie Robinson..... **2010-11-12**
 Alice Rolls.....1984
 Bonnie Rosen.....1989-90-91
 Sara Rosenbaum (C).....1973-74
 Amy Russell (M).....1989

S

Darlene Scott1980-81-82
 Dru Scheifele.....1981-83
 Sally Seiy2011
 Paige Selenski 2008-09-10-12
 Lindsey Selfridge..... 2002-03-04-05
 Lindsey Sheehan (C).....1984-85-86
 Katelyn Slocum (C)..... 1999-00-01-02
 Kathy Smith (C)..... 1974-75-76-77
Lane Smith.....**2011-12**
 Shanna Smith (M).....1989
 Kristy Sott.....1997-99-00
 Debbie Spillard (C).....1977-78-79
 Inga Stöckel2009
 Mary Sullivan1978-79-80
 Rachel Sumfest2011-12
 Taylor Swezey..... 2007-08-09-10
 Alexandra 'Sandy' Szilassy (C)1988-89

T

Abby Taylor 2004-05-06-07
 Meribel Taylor (M)1985-86-87
 Meredith Thorpe..... 1995-96-97-98
 Shiloh Trianna.....2006
 Jenny Turner1974

U

Cara Unterkofler..... 1999-00-01-02

V

Charlotte van den Broek2009
 Kiersten van Hooser2000-01
 Boyd Vicars.....2007-09-10
Carissa Vittese **2010-11-12**
 Michelle Vittese..... 2008-09-10-12
 Lorraine Vizzuso 1997-98-99-00
 Michelle Vizzuso 1995-96-97-98
 Floor Vogels.....2008-09
 Kelsey Vonier2006-07

W

Gretta Wahlstron (C)1979-80
 Carole Wagner1983-84-85
 Rosemary Walker 1999-00-01-02
 Merrell Wall..... 1974-75-76-77
 Heidi Waterman (C)1991-92-94
 Ann Watkins 1974
Sarah Weber.....**2011-12**
 Julie Wells.....1977-78-79
 Allison West (C) 1994-95-96-97
 Frances West (C)1996-97-98
 Denise Wernersbach (C)1991-92
 Natalie Wheatall 1982-83-84-85
 Emily White..... 1999-00-01-02
 Jessica White2011-12
 Mason White..... 1998-99-00-01
 Tracy Whitehurst (C) 1985-86-87-88
 Ellen Wiese.....1996-97-98
 Rebecca Wilbricht2000-01
 Susan Williams (C) 1985-86-87-88
 Phoebe Willis2010-11-12