



# Release Notes

## Visure Requirements ALM 6

DATE

October, 2020

AUTHOR

Visure Solutions, Inc.

# Table of Contents

1	Visure Requirements ALM Release Notes .....	4
1.1	Warnings.....	4
1.2	Compatibility .....	4
1.3	Special Compatibility .....	6
1.3.1	Visure Report Manager .....	6
1.3.2	Workflow scripts .....	6
1.4	Visure Requirements ALM 6.....	6
1.4.1	New features, enhancements and usability improvements.....	6
1.4.2	Solved Issues .....	13
1.5	Visure Requirements ALM 5.4.....	13
1.5.1	New features, enhancements and usability improvements.....	13
1.5.2	Solved Issues .....	16
1.6	Visure Requirements ALM 5.3.....	17
1.6.1	New features, enhancements and usability improvements.....	17
1.6.2	Solved Issues .....	27
1.7	Visure Requirements ALM 5.2.....	30
1.7.1	New features, enhancements and usability improvements.....	30
1.7.2	Solved Issues .....	32
1.8	Visure Requirements ALM 5.1.....	33
1.8.1	New features, enhancements and usability improvements.....	34
1.8.2	Solved Issues .....	36
1.9	Visure Requirements ALM 5.0.....	38
1.9.1	New features, enhancements and usability improvements.....	38
1.9.2	Solved Issues .....	48
1.10	Visure Requirements 4.9.1 .....	50
1.10.1	New features.....	51
1.10.2	Enhancements and Usability Improvements .....	53
1.10.3	Solved Issues .....	53
1.11	Visure Requirements 4.9.0 .....	55
1.11.1	New features.....	55
1.11.2	Enhancements and Usability Improvements .....	60

1.11.3 Solved Issues .....66

2 Questions? Next steps?.....70

## 1 Visure Requirements ALM Release Notes

### 1.1 Warnings

- Commercial open database Microsoft SQL Server 2005 is no longer supported. Microsoft ended the extended support for SQL Server 2005 on April 12, 2016 (<https://www.microsoft.com/en/server-cloud/products/sql-server-2005/>).
- In order to comply with GDPR, throughout 2019 several applications have implemented additional authentication steps. Several integrations may no longer work using the user's username and password and may need to request an API Token. Examples of these integrations include Atlassian JIRA and Azure DevOps.

### 1.2 Compatibility

#### **WARNING**

Please review this list carefully, as there may be database changes that can affect compatibility between versions.

The following product versions are compatible with Visure Requirements ALM 6:

- Visure Requirements 5.3 & Visure Requirements 5.2 Database Schema (5.00 11): If you are using Visure Requirements 5.2 or 5.3, a database migration is not needed. However, previous versions of Visure Requirements use an older database schema, and require a migration. Once the database is migrated to the latest version, Visure Requirements 5.1 and older will not be able to access the database.

#### **IMPORTANT NOTE:**

Even though Visure Requirements ALM 6 is compatible with older database schemas and a migration is not necessary, it is highly recommended to not use older versions of the client and Visure Requirements ALM 6 at the same time. Visure Requirements ALM 6 implements a new cache mechanism which is not accessible to previous versions of Visure Requirements. Therefore, changes made by Visure Requirements ALM 6 will be available to older Visure Requirements clients, but changes made by a previous version of Visure Requirements will not be available to Visure Requirements ALM 6 users and inconsistent information may be displayed.

- Visure Templates 5.2 and 5.3: Templates created with an older version of Visure will not be compatible.

#### **NOTE:**

In order to migrate project templates to the latest version, create a new Visure project in Visure Requirements 5.1/5.0 and then migrate the repository to Visure Requirements 5.2.

- Visure Report Manager 4.8, 4.9, 4.9.1, 5.0, 5.1, 5.2, 5.3, 5.4 and 6 (check Special Compatibility with version 6 chapter )
- License Server 4.9.10 (only one license file) and License Server 4.9.25.

**NOTE:** Visure Requirements ALM 6 may use Visure License Server 4.9.10, but in this case, only one license file may be used. In order to use EXCLUSIVE and ADDITIVE licenses at the same time, Visure License Server 4.9.25 needs to be installed.

- Integrations:
  - Visure Requirements integration with Atlassian JIRA 6
  - Visure Requirements integration with Azure DevOps 6
  - Visure Requirements integration with Enterprise Architect
- Add-ins:
  - MS Word Import plugin 6
  - MS Excel Import plugin 6
- Plugins:
  - ReqIF 6
  - Traceability Parser 6
  - Source Code Parser 6
  - Test Management 6
  - Risk Management 6
- Deprecated compatibility:
  - VR Last Comments Plugin (this functionality is now provided out-of-the-box)
  - Help plugin
- Currently under development
  - Visure Report Manager 6
  - Visure Requirements integration with HP ALM 6
- Incompatible:
  - Visual Basic workflow user interfaces associated to workflow transitions (check Special Compatibility chapter for further information)
  - Visure Templates 5.2 and 5.3: Templates created with an older version of Visure will not be compatible.
  - Visure Reviewer 1.0 Comments and electronic signature
  - QVScribe 1.0.0
  - ReqIF v1, v1.0.2.501, 1.1.3.507
  - Traceability Parser 2.0.492.0
  - Source Code integration 4.8, 4.9.1, 5.1
  - Test Management (TM) v4.8, v4.9, v4.9.1
  - FMEA v4.8
  - MS Word Import plugin 1.1.0.275, 2.0.0.300, 2.0.0.302. Visure Requirements 5.4 installs v5.4.0.2080 automatically
  - Visure Requirements integration with HP ALM v4.8
  - Visure Requirements integration with Enterprise Architect 4.8
  - Visure Requirements integration with Atlassian JIRA v1, v2.0.0.9

- Visure Requirements integration with Azure DevOps v1

## 1.3 Special Compatibility

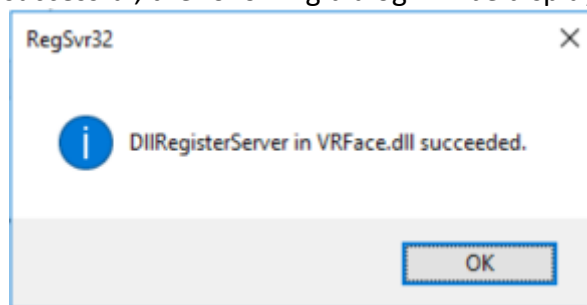
### 1.3.1 Visure Report Manager

Visure Report Manager 5.4 and previous versions are a read-only application, and can be used in conjunction with Visure Requirements ALM 6.

In order to make Visure Report Manager 5.4 compatible with Visure Requirements ALM 6 follow these steps BEFORE the installation:

- Make sure to maintain the ODBC connection to the database. These connections will not be deleted by the Visure Requirements ALM 6 installer, so they will remain after the installation, unless you delete them manually
- Make a copy of Visure Requirements 5.x folder before uninstalling and paste it in C:\Program Files (x86)\ . This new folder may be called VisureRequirements 5.x
- Open a command prompt with elevated access rights
- Access the C:\Program Files (x86)\VisureRequirements 5.x folder
- Register VRFace.dll in the new location by typing in `regsvr32 VRFace.dll`

If the registration was successful, the following dialog will be displayed:



- You may now uninstall Visure Requirements 5.x and install Visure Requirements ALM 6

### 1.3.2 Workflow scripts

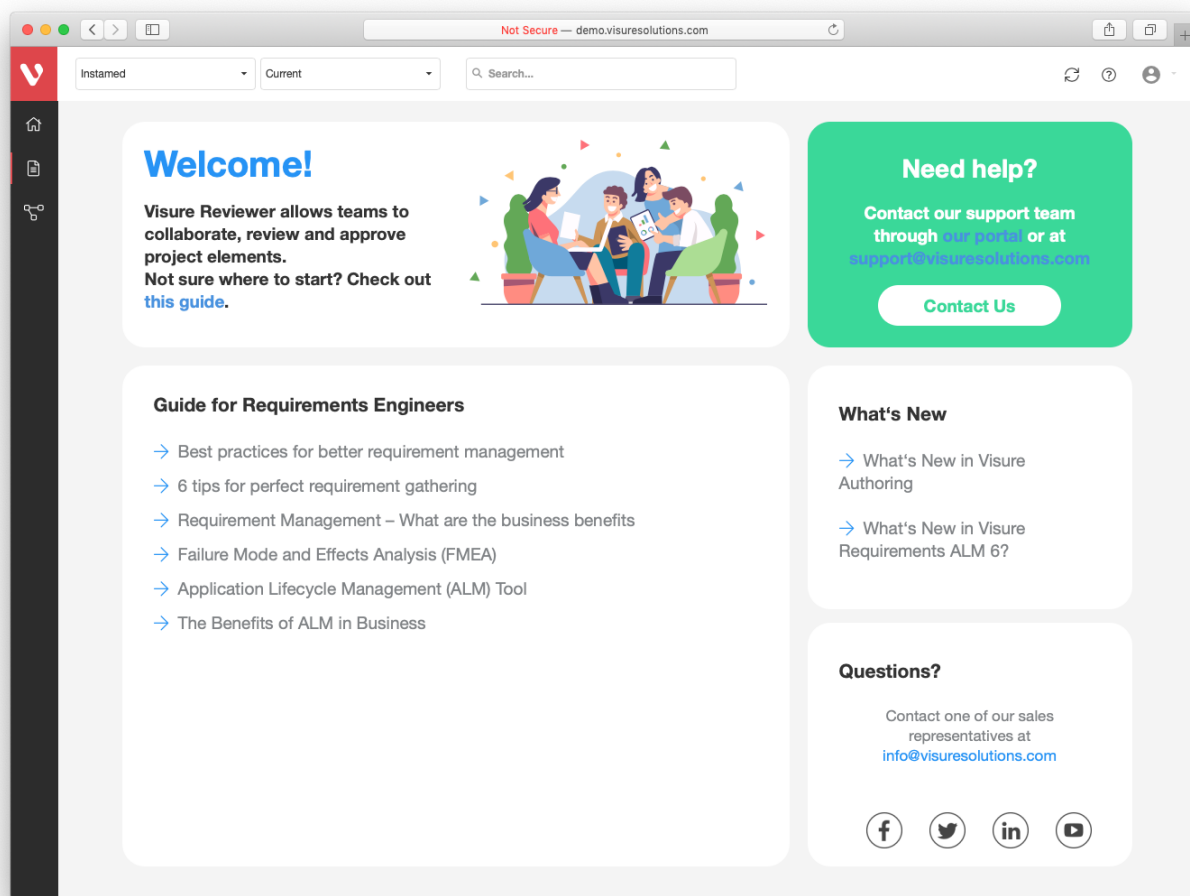
Due to the new 3-tier architecture, workflow scripts are executed in the server. This prevents workflows from displaying messages and any other user interface messages. Functions such as "MsgBox" should be disabled in the scripts.

## 1.4 Visure Requirements ALM 6

### 1.4.1 New features, enhancements and usability improvements

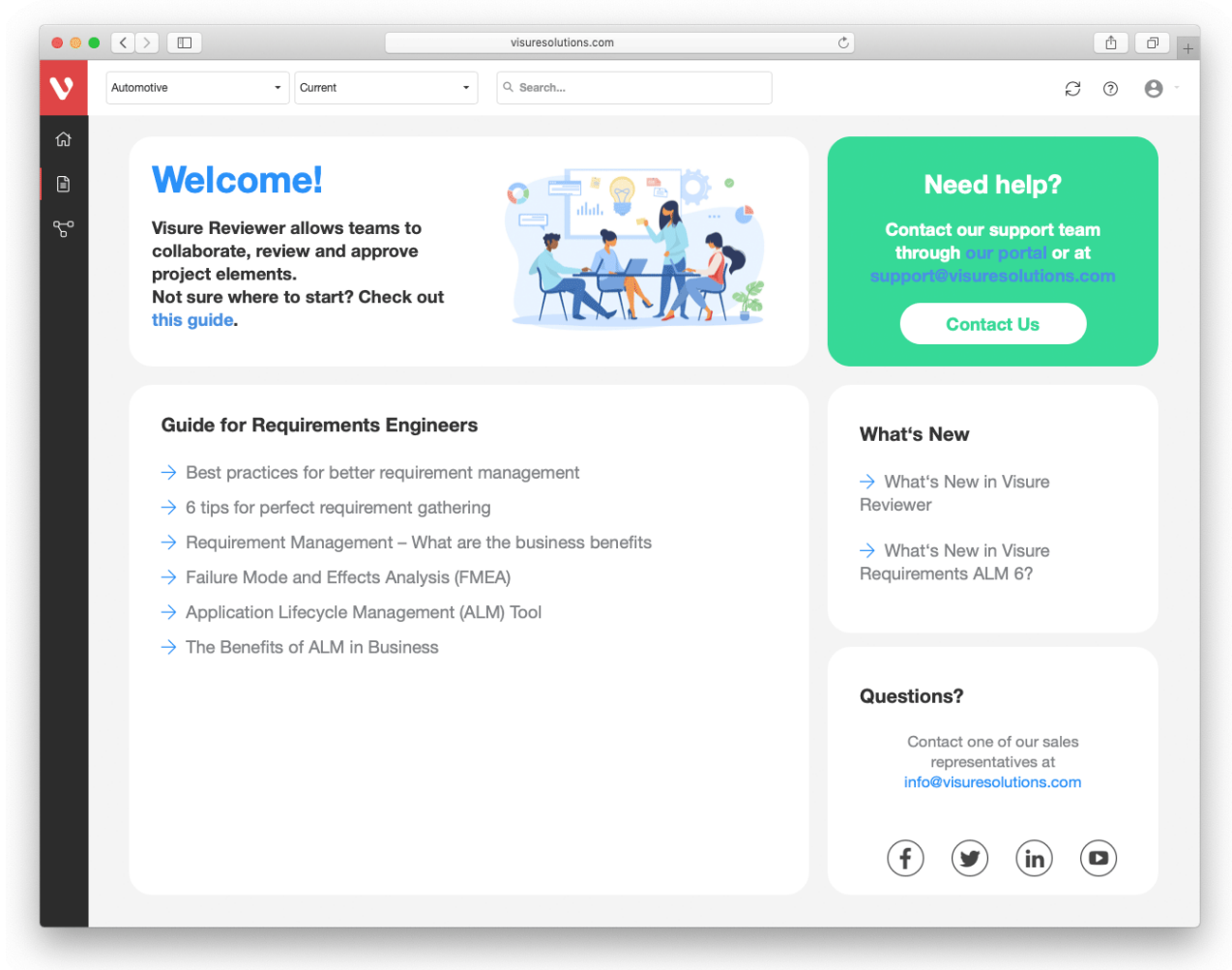
#### 1.4.1.1 Visure Authoring

Visure Requirements ALM Platform incorporates a brand new application for users who only need to create items, establish traceability and collaborate with other users by reviewing specifications and requirements. The Visure Authoring application is a native web client that provides a very simple and easy to use interface. Please refer to the Visure Authoring Release Notes for further information.



## 1.4.1.2 Visure Reviewer

Visure Reviewer has also been improved to take advantage of the new usability and review features in Visure Requirements ALM 6.

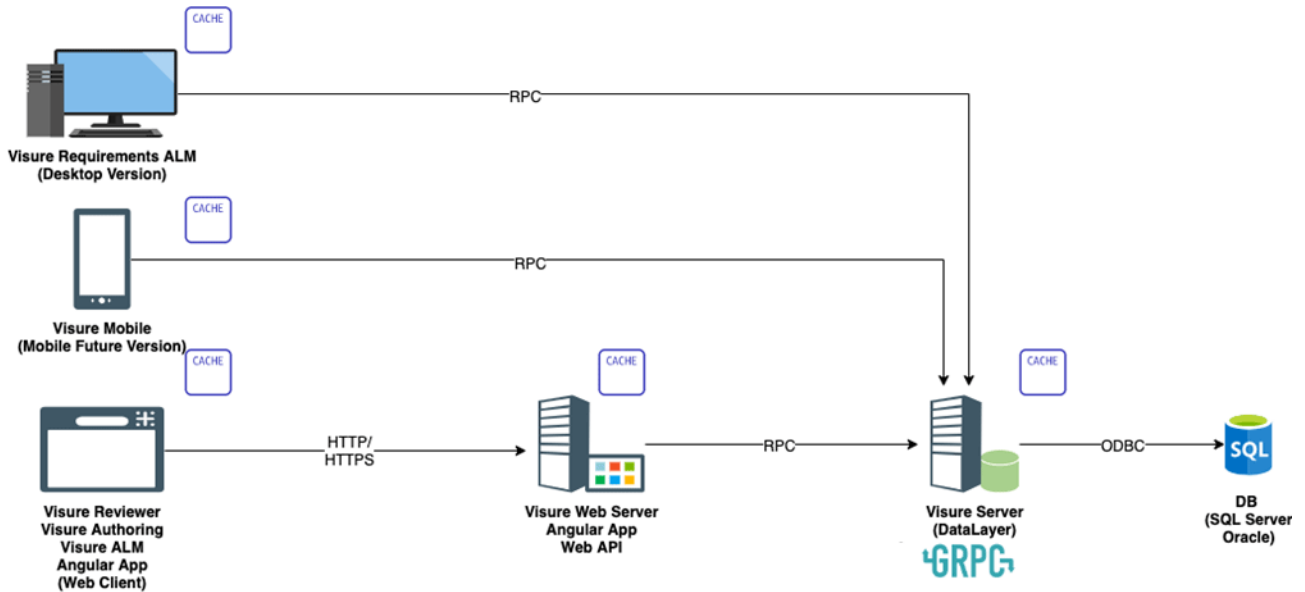


### 1.4.1.3 3-tier architecture

The entire Visure Requirements ALM Platform has been redesigned to provide a state of the art infrastructure that features a 3-tier architecture.

This new architecture uses gRPC protocol as the basis for the communication between the Visure Requirements ALM client and server, providing a faster, more reliable, scalable and secure connection.





## 1.4.1.4 Traceability matrix

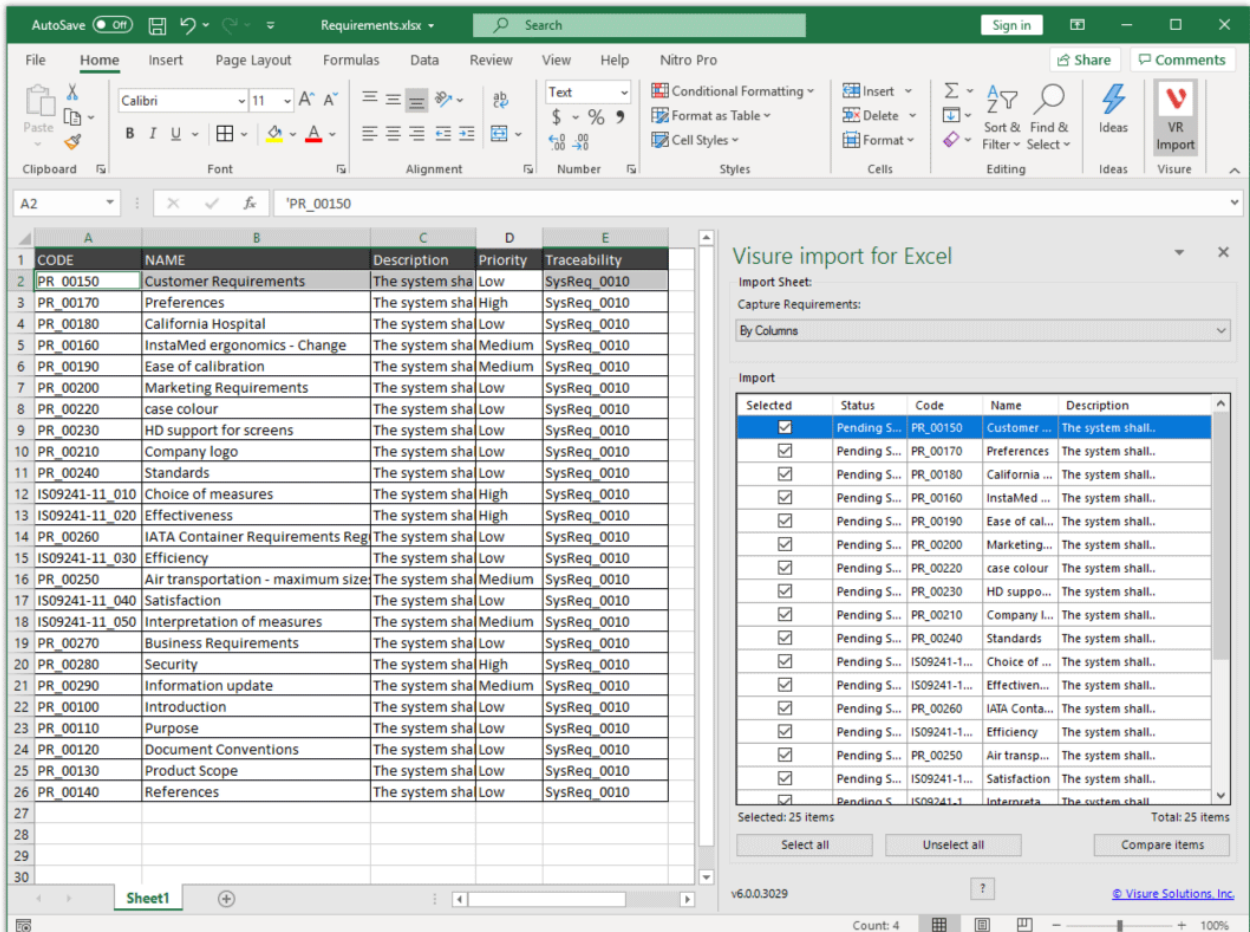
Traceability matrices are a fundamental tool in the Requirements Engineering process. Visure Requirements ALM 6 provides a native support to these artifacts by allowing users to a view that will display end-to-end traceability, configure in a quick and simple way. For the user's convenience, these matrices can be exported to MS Excel.

The screenshot shows the 'Export / Reports' menu in the Visure Requirements ALM 6 application. The 'Export to Excel' option is selected, leading to a 'Report Manager' dialog. The main window displays a traceability matrix with the following structure:

Product Requirements	System Requirements	Component Requirements	Component Tests	Runs
TEMPLATE-PR_00160 (2) - InstaMed ergonomics	TEMPLATE-SysReq_0040 (2) - Doorway thresholds	TEMPLATE-MechReq_0010 (2) - Control Unit dimension	TEMPLATE-00160 (2) - Step 1	TEMPLATE-00160_Results_001 (2) - Step 1 (Results)
			TEMPLATE-00280 (2) - Step 1	TEMPLATE-00280_Results_001 (2) - Step 1 (Results)
			TEMPLATE-00500 (3) - Step 3	
	TEMPLATE-SysReq_0050 (2) - Standard truck elevator tailgates			
	TEMPLATE-SysReq_0030 (2) - Cart mobility			
TEMPLATE-PR_00170 (2) - Preferences				
TEMPLATE-PR_00180 (2) - US Hospital				
TEMPLATE-PR_00190 (2) - Ease of calibration	TEMPLATE-SysReq_0070 (2) - Calibration and setup	TEMPLATE-ElecReq_0010 (2) - Power cord availability	TEMPLATE-00320 (2) - Step 1	TEMPLATE-00320_Results_001 (2) - Step 1 (Results)
			TEMPLATE-00460 (2) - Step 3	TEMPLATE-00460_Results_001 (2) - Step 3 (Results)
	TEMPLATE-SysReq_0110 (2) - Security			

## 1.4.1.5 MS Excel import plugin

The Visure MS Office plugins are an extremely efficient way of importing requirements and traceability in the Visure Requirements ALM platform. In addition to the existing MS Word plugin, Visure Requirements ALM 6 incorporates a new MS Excel plugin capable of importing complex tables of requirements with attributes and traceability directly from the MS Office UI.

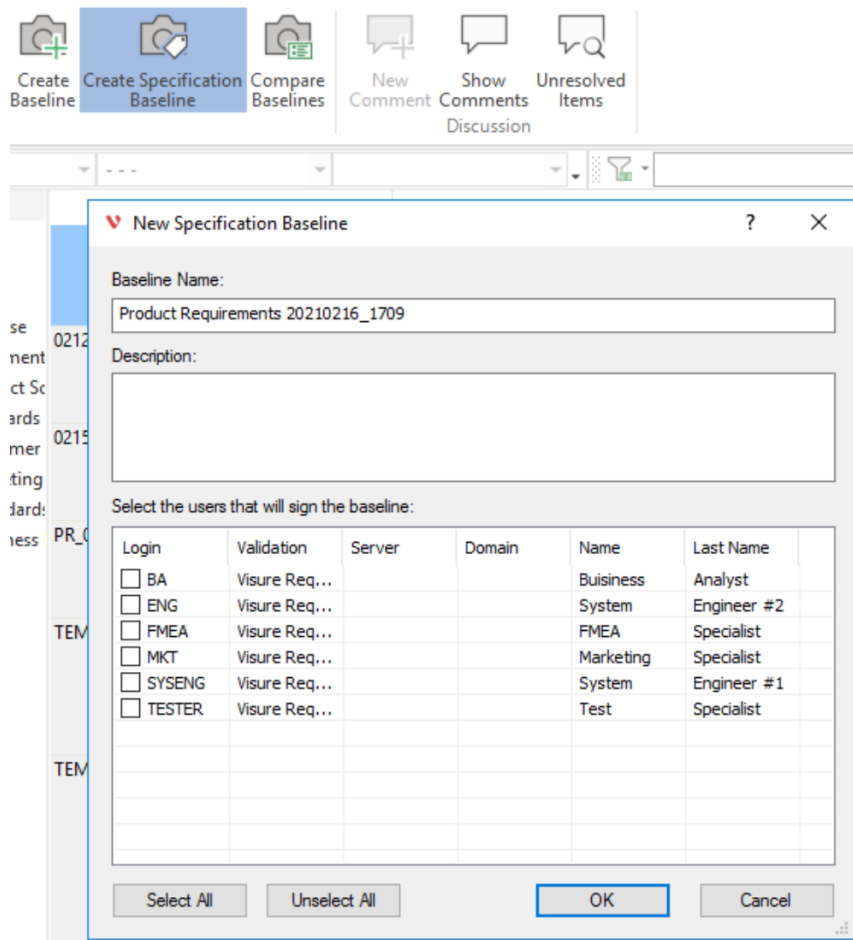


CODE	NAME	Description	Priority	Traceability
PR_00150	Customer Requirements	The system sha	Low	SysReq_0010
PR_00170	Preferences	The system sha	High	SysReq_0010
PR_00180	California Hospital	The system sha	Low	SysReq_0010
PR_00160	InstaMed ergonomics - Change	The system sha	Medium	SysReq_0010
PR_00190	Ease of calibration	The system sha	Medium	SysReq_0010
PR_00200	Marketing Requirements	The system sha	Low	SysReq_0010
PR_00220	case colour	The system sha	Low	SysReq_0010
PR_00230	HD support for screens	The system sha	Low	SysReq_0010
PR_00210	Company logo	The system sha	Low	SysReq_0010
PR_00240	Standards	The system sha	Low	SysReq_0010
IS09241-11_010	Choice of measures	The system sha	High	SysReq_0010
IS09241-11_020	Effectiveness	The system sha	High	SysReq_0010
PR_00260	IATA Container Requirements Reg	The system sha	Low	SysReq_0010
IS09241-11_030	Efficiency	The system sha	Low	SysReq_0010
PR_00250	Air transportation - maximum size	The system sha	Medium	SysReq_0010
IS09241-11_040	Satisfaction	The system sha	Low	SysReq_0010
IS09241-11_050	Interpretation of measures	The system sha	Medium	SysReq_0010
PR_00270	Business Requirements	The system sha	Low	SysReq_0010
PR_00280	Security	The system sha	High	SysReq_0010
PR_00290	Information update	The system sha	Medium	SysReq_0010
PR_00100	Introduction	The system sha	Low	SysReq_0010
PR_00110	Purpose	The system sha	Low	SysReq_0010
PR_00120	Document Conventions	The system sha	Low	SysReq_0010
PR_00130	Product Scope	The system sha	Low	SysReq_0010
PR_00140	References	The system sha	Low	SysReq_0010

Selected	Status	Code	Name	Description
<input checked="" type="checkbox"/>	Pending S...	PR_00150	Customer ...	The system shall..
<input checked="" type="checkbox"/>	Pending S...	PR_00170	Preferences	The system shall..
<input checked="" type="checkbox"/>	Pending S...	PR_00180	California ...	The system shall..
<input checked="" type="checkbox"/>	Pending S...	PR_00160	InstaMed ...	The system shall..
<input checked="" type="checkbox"/>	Pending S...	PR_00190	Ease of cal...	The system shall..
<input checked="" type="checkbox"/>	Pending S...	PR_00200	Marketing...	The system shall..
<input checked="" type="checkbox"/>	Pending S...	PR_00220	case colour	The system shall..
<input checked="" type="checkbox"/>	Pending S...	PR_00230	HD suppo...	The system shall..
<input checked="" type="checkbox"/>	Pending S...	PR_00210	Company l...	The system shall..
<input checked="" type="checkbox"/>	Pending S...	PR_00240	Standards	The system shall..
<input checked="" type="checkbox"/>	Pending S...	IS09241-1...	Choice of ...	The system shall..
<input checked="" type="checkbox"/>	Pending S...	IS09241-1...	Effectiven...	The system shall..
<input checked="" type="checkbox"/>	Pending S...	PR_00260	IATA Conta...	The system shall..
<input checked="" type="checkbox"/>	Pending S...	IS09241-1...	Efficiency	The system shall..
<input checked="" type="checkbox"/>	Pending S...	PR_00250	Air transp...	The system shall..
<input checked="" type="checkbox"/>	Pending S...	IS09241-1...	Satisfaction	The system shall..
<input checked="" type="checkbox"/>	Pending S...	IS09241-1...	Interpreta...	The system shall..

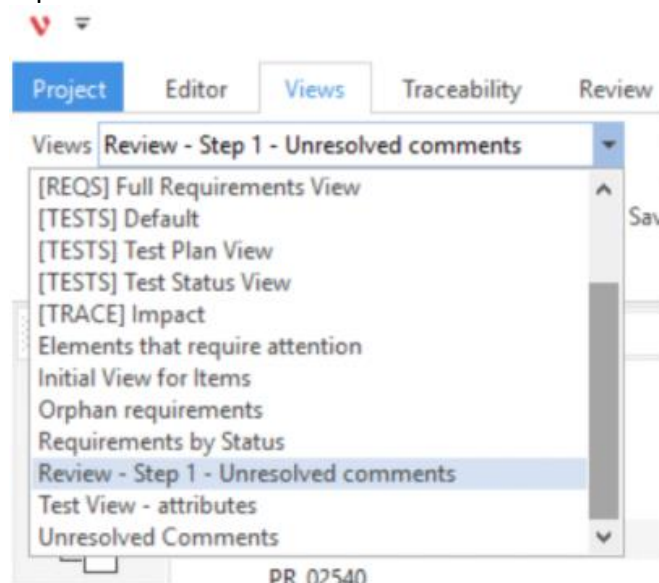
## 1.4.1.6 Specification baselines

Any user may now create a baseline of their own specifications without the need of being a project administrator and in one single step. This specification baseline will automatically include all checked in items as well as all the necessary attributes and types.



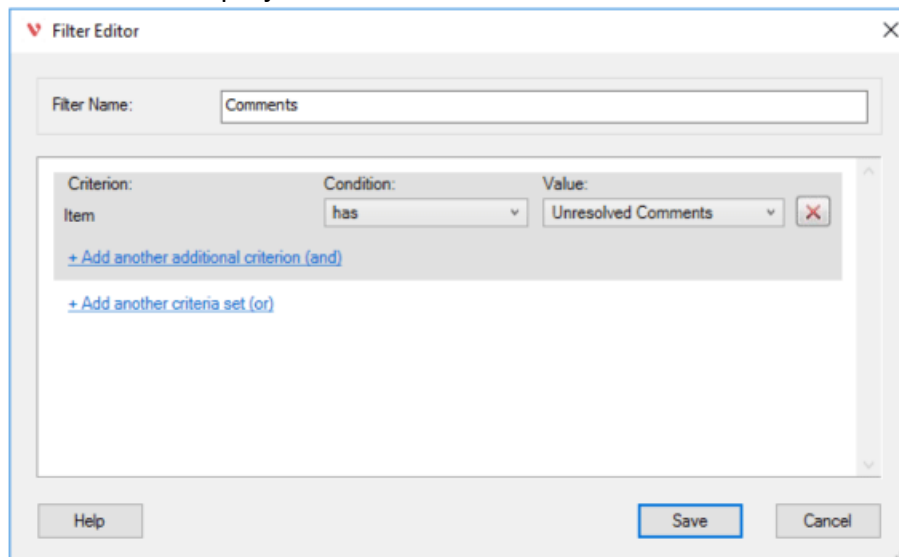
## 1.4.1.7 Views

Project administrators can now create generic views that they can share with the rest of the users of the project such as other project managers, engineers or testers. These users will then be able to apply these generic views to their own specifications, allowing them to display the information following pre-defined templates.



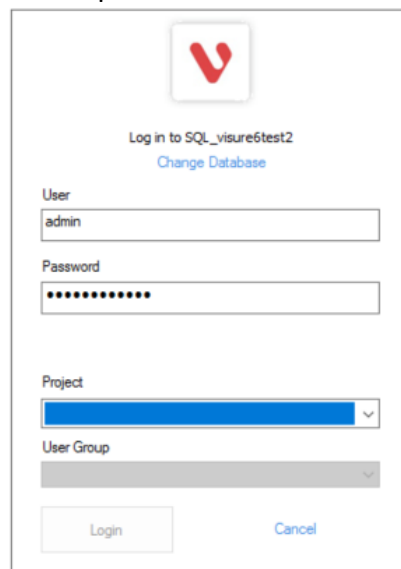
## 1.4.1.8 Additional Filters (comments and code)

In order to provide a more collaborative environment, Visure Requirements ALM 6 provides new filters including code filters and comments filters. By using these new filters, Project Managers and other user groups can create views displaying the elements from a specification or a group of specifications that contain unresolved comments, and can save them in a view that can then be shared with other users of the project.



## 1.4.1.9 Usability improvements:

- Login: Visure Requirements ALM 6 provides a streamlined login process



- Ribbon: The Visure Requirements ALM 6 ribbon reduces the complexity of the UI by including the insert options directly in the Edit tab.
- Double click: The specifications view provides several new capabilities targeted towards providing users with a better user experience. Users may open the specifications by double clicking on them either from the navigation panel or the grid. This option is also available from the context menu as Open Specification and Open Specification in a New View.

- Context menu: The navigation panel provides a new context menu with all the management options, so that users can manage items directly from the navigation panel, including features like check-in, check-out and edit properties, among others.
- Improved UI: The UI has been updated to provide user with a more comfortable working environment.

## 1.4.2 Solved Issues

- **CR\_00469 - Opening Specification Performance**
- **CR\_00466 – Open view and scroll performance**
- **CR\_22770 – Sort by code performance on linked items tab**
- **CR\_00470 – Change between views performance**
- **CR\_00440 – Opening project shows no items**
- **CR\_00468 – Visure Requirements is very slow when using VPN**
- **CR\_00467 – Checking out multiple items takes very long time**

### **Problem definition**

When the user follows

### **Solution definition**

When the user follows

- **CR\_XXX - XXX**

### **Problem definition**

When the user follows

### **Solution definition**

When the user follows

## 1.5 Visure Requirements ALM 5.4

### 1.5.1 New features, enhancements and usability improvements

#### *1.5.1.1 Global Parameters*

Some projects have defined sets of parameters such as conditions, ranges and other quality aspects e.g. max, min voltage, speed, etc., that are represented through a special type of requirement and referenced to from other specifications in the project.

Apart from tracing to these parameters through traditional traceability, they sometimes need to be referenced to from within the description of other requirements.

Visure Requirements ALM platform allows users to define specifications with these global parameters and reference them from the description of other requirements in the project.

## 1.5 Global Parameters

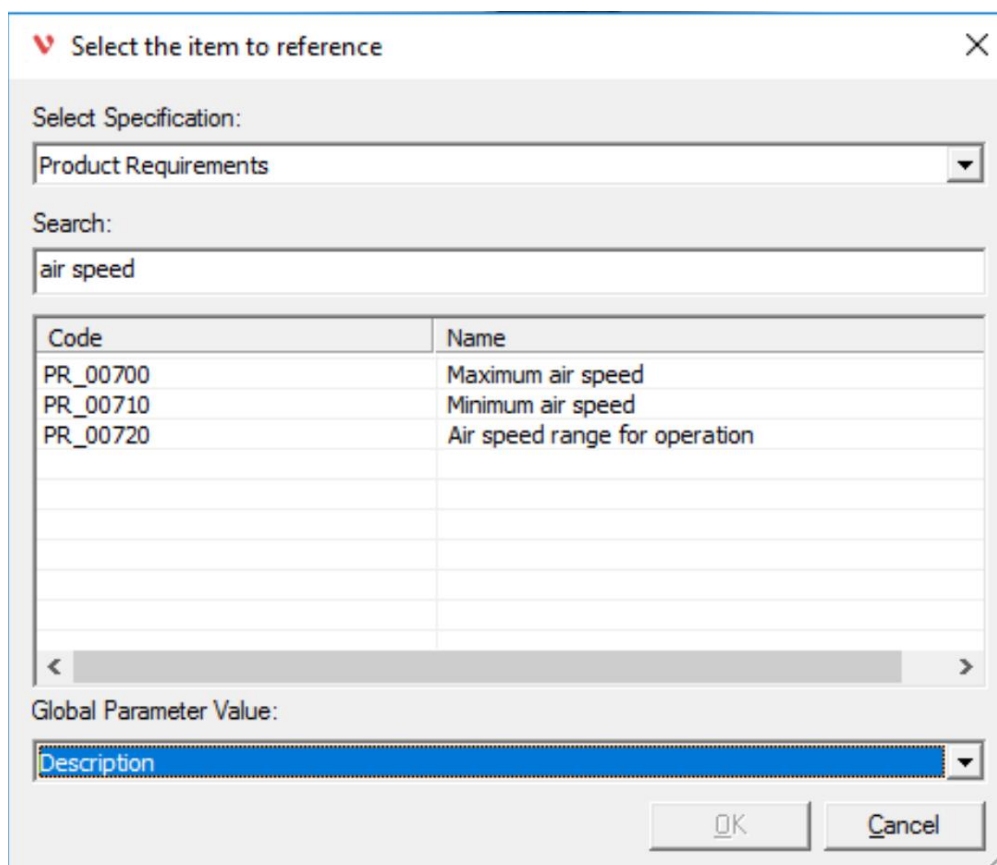
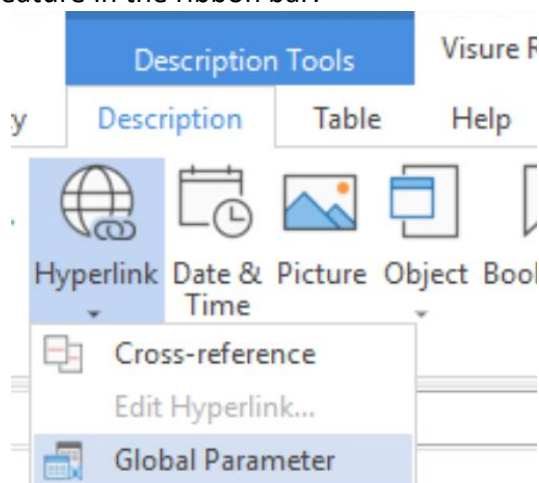
### 1.5.1 Maximum air speed

100 km/h

### 1.5.2 Minimum air speed

20 km/h

The Visure Global Parameters feature allows referencing the name, description or attribute value of these requirements from the description of another requirement using the Global Parameter option inside the Hyperlink feature in the ribbon bar:





## 2.3 Air speed range for operation

The system shall be in operation when the air speed is within the minimum air speed of [PR\\_00710 \(Description\)](#) and the maximum air speed of [PR\\_00700 \(Description\)](#)

Once the user selects the referenced requirement and field, Visure Requirements ALM Platform will automatically convert the reference into the actual value. This value will be kept updated with any modification made to the original requirement

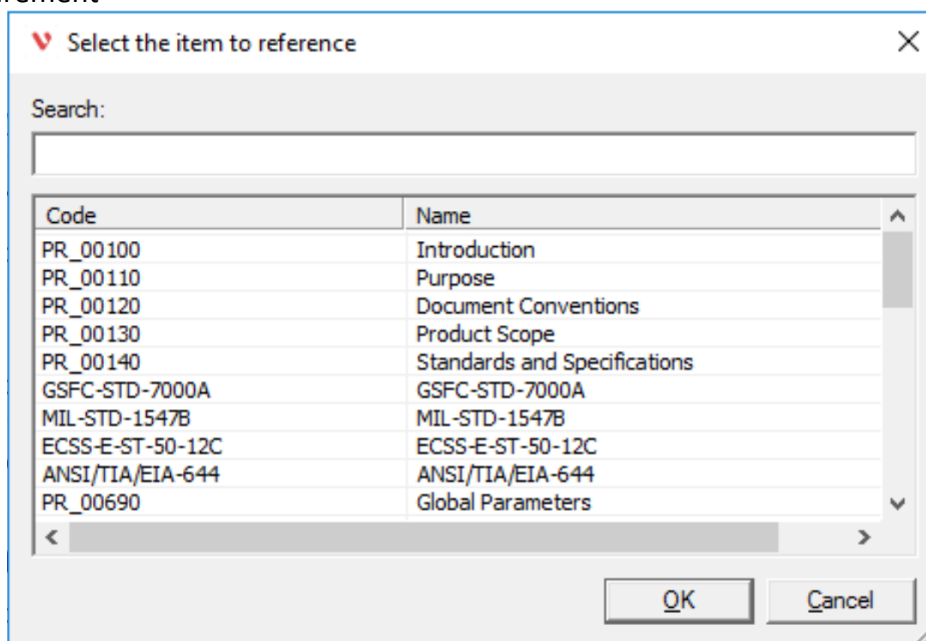


## 2.3 Air speed range for operation

The system shall be in operation when the air speed is within the minimum air speed of [20 km/h](#) and the maximum air speed of [100 km/h](#)

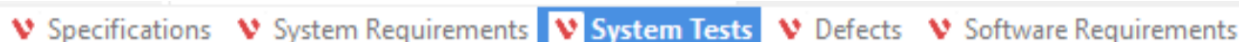
### 1.5.1.2 Search in cross-references

The cross-reference capability includes a new search capability that helps users quickly access the desired requirement



### 1.5.1.3 Tab information

Tabs at the bottom of the application now display the name of the specification



## 1.5.1.4 Following hyperlinks

When following hyperlinks, if the destination specification is already open, the target requirement will be displayed in the existing window.

## 1.5.1.5 Vertical cell separation in hierarchy view

The hierarchy view now displays vertical lines to clearly differentiate cells, to provide users an environment closer to MS Excel.

## 1.5.1.6 User information in license check out

The license server will display user's hostname as part of the license check out in order to facilitate the proper identification of the user checking out the license

## 1.5.2 Solved Issues

- **CR\_23110– 810,1328 - Continuously opening "Items" tabs**

### Problem definition

When the user follows a link to a related item, if the target specification is already open in a tab, the application should not open a new one, and it should select the element in the already open one and put the focus in that tab.

For instance, if a Product Requirement is related to two System Requirements SR\_0001 and SR\_0002. When clicking on SR\_001 for the first time, it shall open a new tab with SR\_0001 selected. When clicking on SR\_0002, it shall not open a new tab, but select SR\_002 in the System Requirements tab.

### Solution definition

Now, if the linked Item is in a specification that is already opened in a tab, this tab will be enabled instead of opening a new tab containing the target Item.

- **CR\_00272– 1180 - Date and Time conversion**

### Problem definition

When working on certain time and zone areas defined on the Region option at Control Panel, some dates format were not correct, specially those with days 1-12 of a month

### Solution definition

Now all dates format are correctly managed and displayed.

- **CR\_00254– 872 - Tables border in description panel**

### Problem definition

Tables created in the description panel still have a border = 0, while in the inline descriptions default borders are set to 1. All tables need to have a border = 1.

### Solution definition



All tables created on description panel or inline description have a border=1 by default.

- **CR\_00365– 913 - Tab names**

**Problem definition**

Item tabs should display the name of the specification or data model they are displaying, instead of the generic element type they are displaying i.e. Items, Specifications, etc.

If shall only display "Items", if it's not possible to display the spec name or data model.

**Solution definition**

Tabs are now displayed with the element type or specification name (for Items)

- **CR\_00253– 1387 - Java 7 dependencies**

**Problem definition**

When installing visure requirements jre 7 is required to be installed, even if the PC already has version 8.

**Solution definition**

Jre 7 is no longer required on the install process if the system already have Jre 8 32 bits installed.

## 1.6 Visure Requirements ALM 5.3

### 1.6.1 New features, enhancements and usability improvements

#### 1.6.1.1 MS Word import plugin

##### 1.6.1.1.1 Integrated installer

The MS Word Import Plugin is now integrated in the Visure Requirements ALM suite. The plugin will now be installed as a MS Word add-in automatically during the installation of Visure Requirements ALM.

##### 1.6.1.1.2 64-bit support

The installer incorporates all Visual Studio Runtime redistributable files, which enable the use of the MS Word import plugin in 64-bit installations of Windows and MS Office.

##### 1.6.1.1.3 Round-trip improvement

The round-trip comparison between requirements has been improved to provide a more accurate indication of which elements have been modified outside of Visure

##### 1.6.1.1.4 Import of multiple requirements inside tables

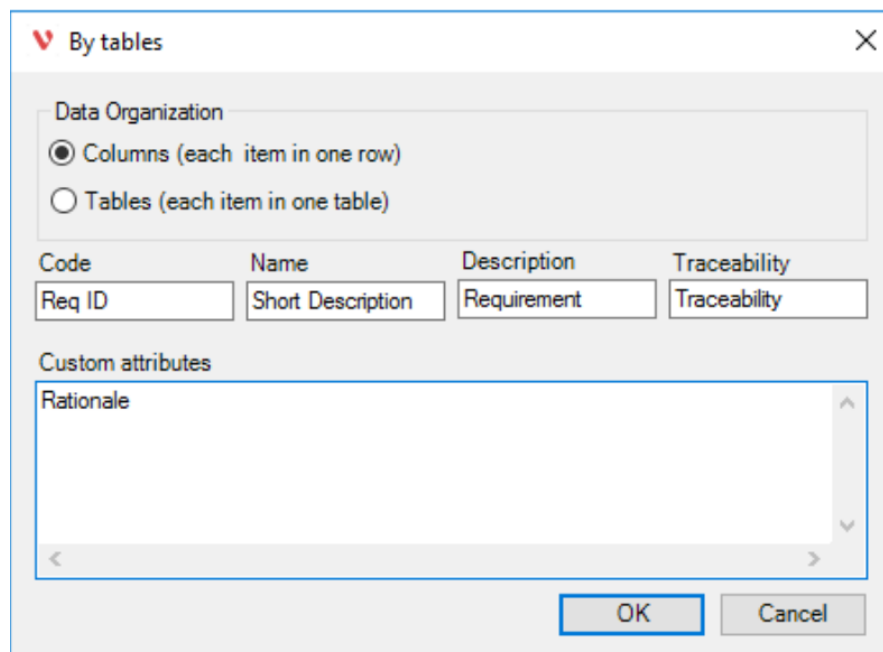
The new MS Word Import plugin supports the import of requirements contained in tables. This process supports the import of code, name, description, attributes and traceability.

These tables need to include one requirement per row.

Example:

Req ID	Short Description	Requirement	Rationale	Traceability
--------	-------------------	-------------	-----------	--------------

REQ_001	Calculation	The system shall provide a calculation of the throttle based on...	The calculation follows the standard requested by the customer	TST_001
REQ_002	Error margin	The calculation of the throttle shall not deviate in more than...	Also included in the same standard	TST_0023



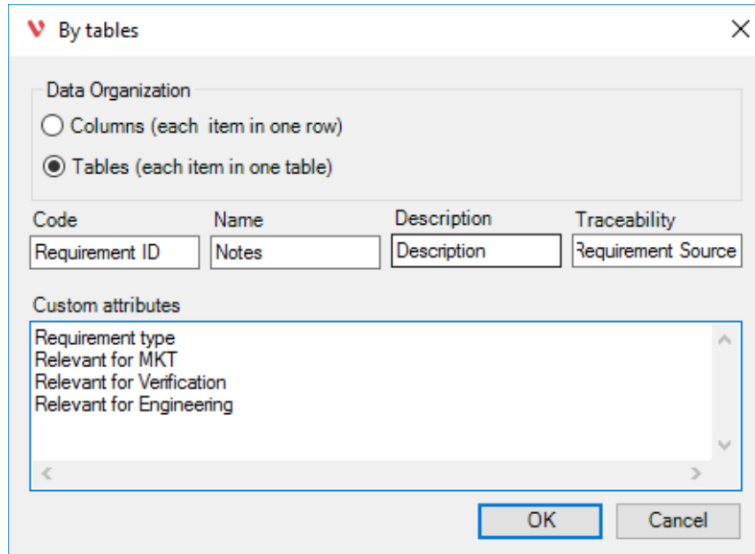
#### 1.6.1.1.5 Import of requirements with a table format

The new MS Word Import plugin supports the import of requirements that display a table format in which code, name, description, attributes and traceability is in a different cell, not necessarily consecutive.

In this case, only one requirement is allowed per table

Example:

Requirement type	Requirement	Requirement ID	REQ_004
Description	The MS Word import plugin shall import requirements with a table format		
Notes	Import of tables		
Requirement Source	MKT_001	Relevant for Verificaiton	
Relevant for MKT	X	Relevant for Engineering	X



#### 1.6.1.1.6 Import from tags and labels

The new MS Word Import plugin supports the import of requirements based on tags or labels. Each field (code, name, description, attributes and traceability) is preceded by a tag that indicates the nature. To indicate the end of the requirement, another tag should be used.

Example:

**REQID : REQ\_0002**

Name : Label import

Issue : 1

Owner : F. VALERA

Type : REQUIREMENT


Status : INITIAL

Release : 1.0

Text : The system shall import requirements based on tags.

Text of requirement 2 of EQ SPEC.

**REQ\_END**


By text

☐ Search for text pattern (Regular expression)

Code

☐ None
☒ Captured text
☐ Paragraph numbering

Name

☒ None
☐ Captured text
☐ Remaining text

Description

☐ None
☐ Remaining text
☒ Remaining text until next element
☐ Next paragraph
☐ Next paragraphs with same style
☐ Next paragraphs until next element

☐ Search for keyword

Use paragraph as:

☐ Name
☒ Description

☒ Search for labels

Label separator

End of Item label

Code

Name

Description

☒ Capture text until end of the item

Custom attributes

Issue
Owner
Type
Status
Release

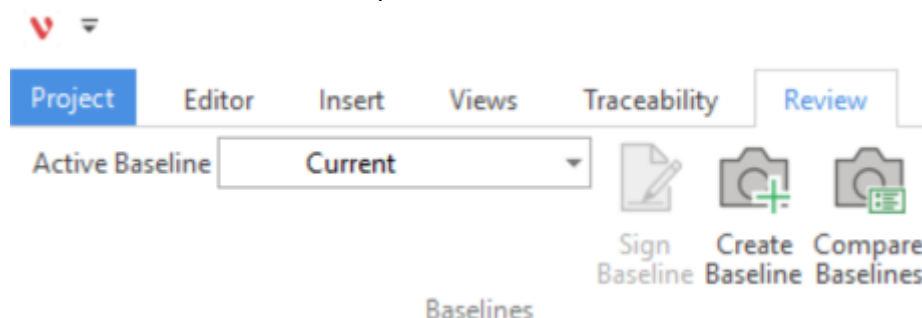
OK

Cancel

### 1.6.1.2 Baseline creation and baseline comparison in Visure client

Visure Requirements ALM Platform now incorporates the capability to create and compare baselines directly from the Review tab inside the client, so that users don't need to open the Administration Center for these tasks.

The baseline creation capability remains identical to 5.2 and will only be available for Project Administrators, whereas the baseline comparison will be available to all the users.



## 1.6.1.3 New Icon, Resolved/Unresolved comments columns

New columns are now available for discussions and comments. The Unresolved Comments Indicator inside the Visual Information group displays a new icon whenever an element has unresolved comments, and the number of unresolved comments in the tooltip.



Two new columns, Unresolved Comments and Resolved Comments in the System Attributes group, display the actual resolved and unresolved comments in the grid, allowing users to export, search and filter based on the comments:

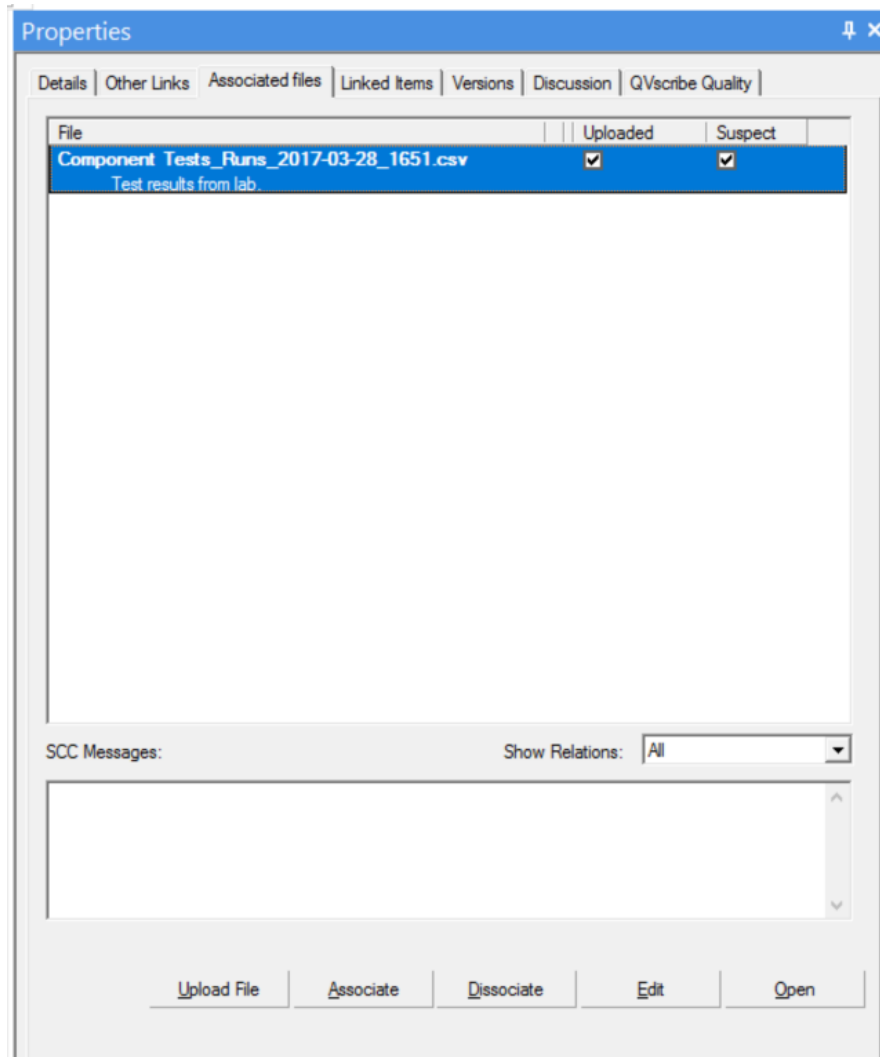
Sortin...	Name	Unresolved Comments	Resolved Comments
2.1	InstaMed ergonomics	ADMIN - 4/14/2020 - [Item Version: 18] Is this the latest version of the UI?	ADMIN - 4/14/2020 - [Item Version: 18] Was the ergonomics standard observed when creating the component? Reply: ADMIN - 4/14/2020 - [Item Version: 18] Sorry guys, I checked it and yes, it was taken into consideration. I am resolving this comment.
<p>Health personnel must be able to maneuver the equipment within the hospital.</p>  <p>Figure 1 - Cool Medical Device</p>			

## 1.6.1.4 Version in comments

New comments will now include the prefix *[Item Version: X]*, X being the version in which the element was created. This will allow users understand which version does the comment apply to.

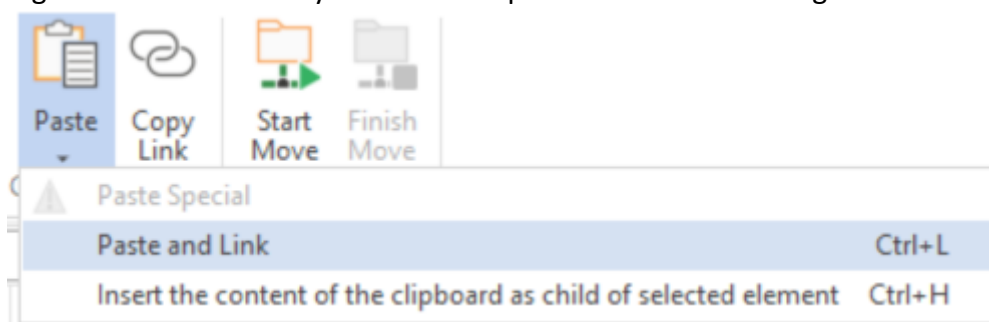
## 1.6.1.5 Upload/Download files

Apart from associating a URL or a path, the associated files tab also allows to upload (attach) a file to an item. This file will be saved in the database, along with the rest of the elements, and will be accessible to the rest of the users regardless of their location. Users will now be able to attach a Visio diagram to a requirement, or evidence of a failure to an execution.



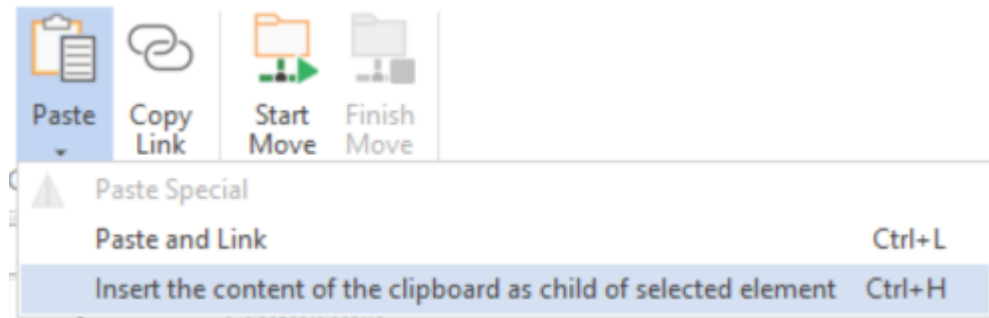
#### 1.6.1.6 Paste and link

It is relatively common to create traced elements from their origin. For instance, a first draft of a test plan out of the requirements, or system requirements out of detailed user requirements. The Paste and Link feature allows users to copy an element and paste it in a different specification while creating a trace automatically between the pasted item and the original item.



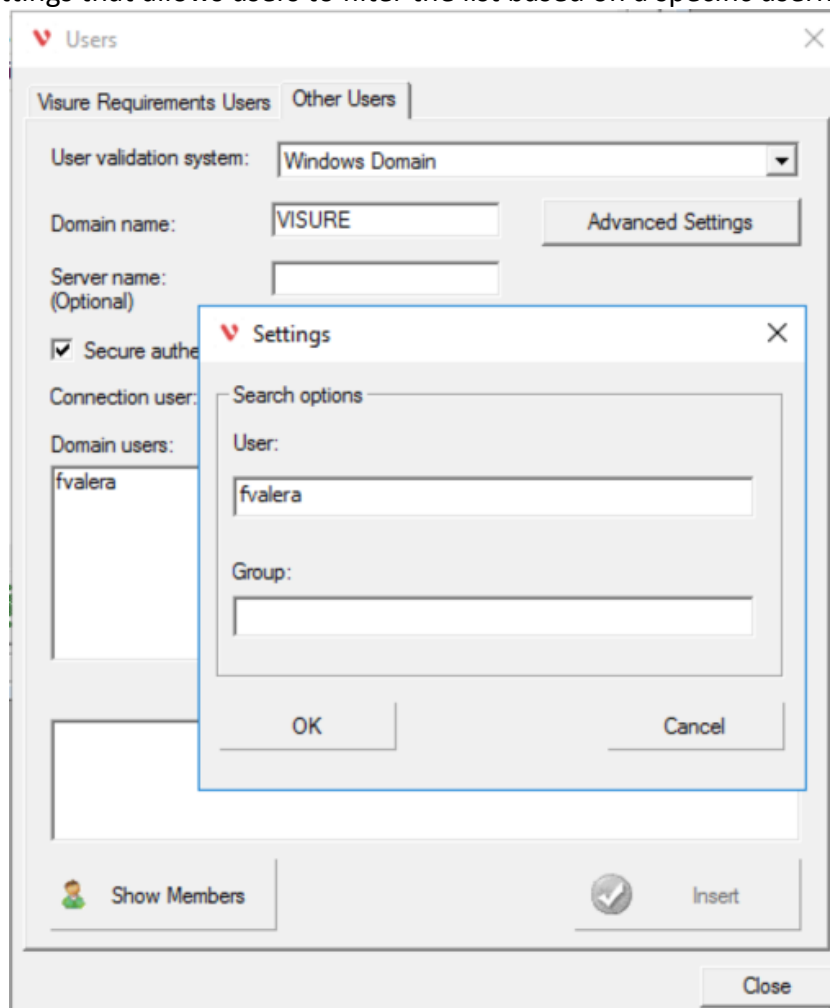
## 1.6.1.7 Paste as child

The paste feature includes a new Paste as Child option to paste an item or a set of items as a child, or as children of the selected item.



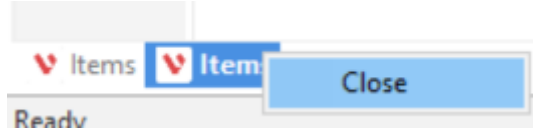
## 1.6.1.8 User filter when creating Windows Domain users

Large organizations have hundreds or thousands of users in their domains, and searching for a specific user may be complicated. Visure Requirements ALM 5.3 incorporates a new user filter in the Advanced Settings that allows users to filter the list based on a specific username or group.



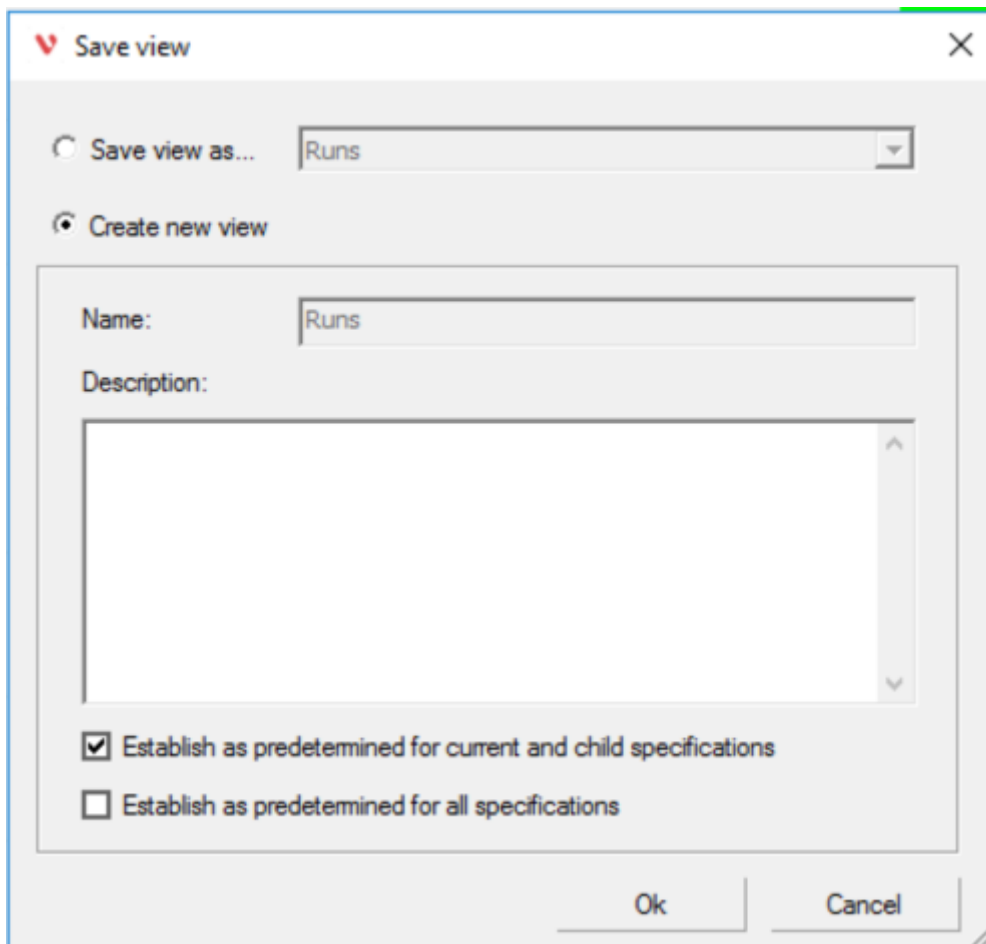
#### 1.6.1.9 Close "Items" tabs more efficiently

Different item types and specifications can be opened in different tabs so that users can quickly navigate between them. These tabs can be close either by the close button at the right-hand side of the bar, and this new version includes a new Close option in the context menu of the tab which makes closing the tabs more accessible.



#### 1.6.1.10 Inherited views

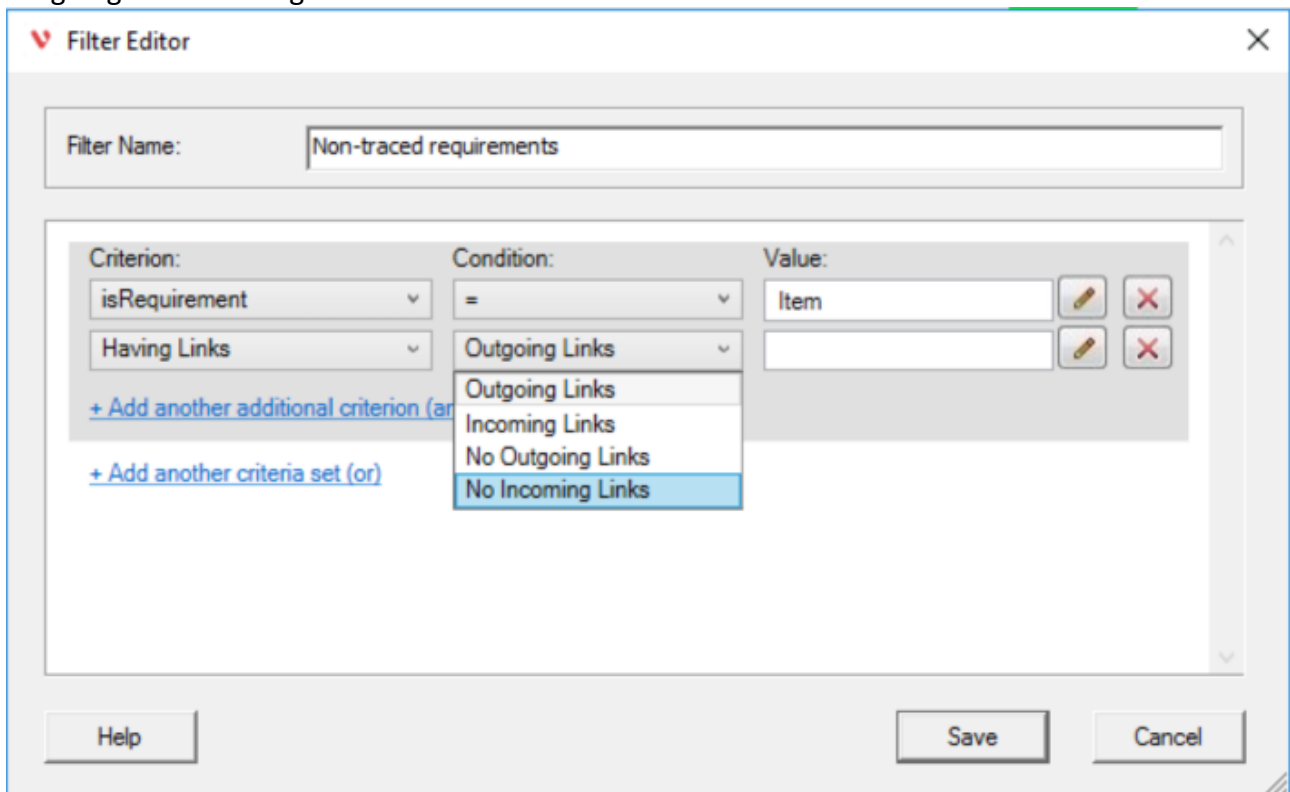
A new view inheritance feature allows users to save a view for a given folder specification e.g. Specifications, Tests, so that any specification inside that folder specification will inherit the view from the parent folder specification e.g. User Requirements from Specifications, Acceptance Test from Tests, etc.





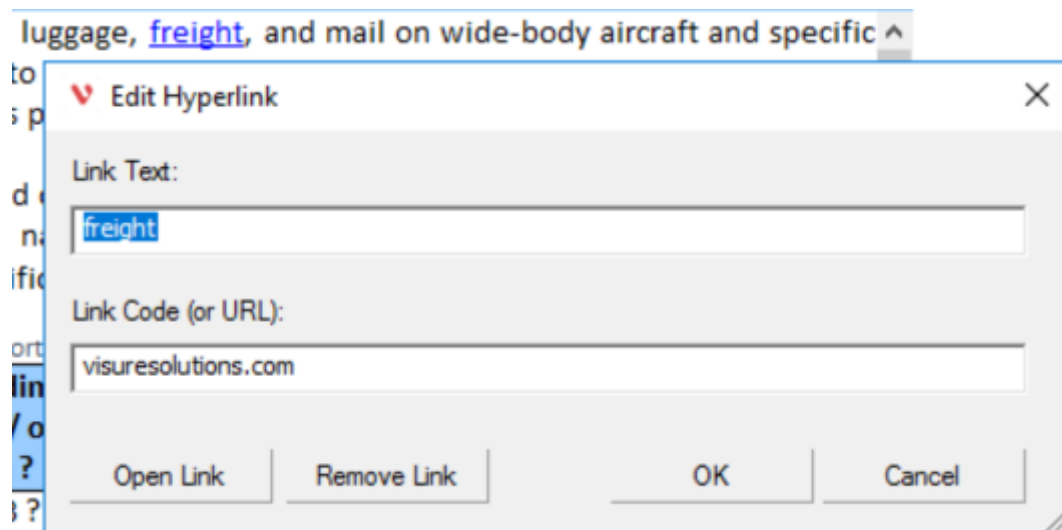
#### 1.6.1.11 Non-traced items filter

A new option in the filters dialog box allows creating filters for non-traced items either for outgoing and incoming links



#### 1.6.1.12 Edit hyperlinks

Existing hyperlinks can now be edited by clicking on top of them:

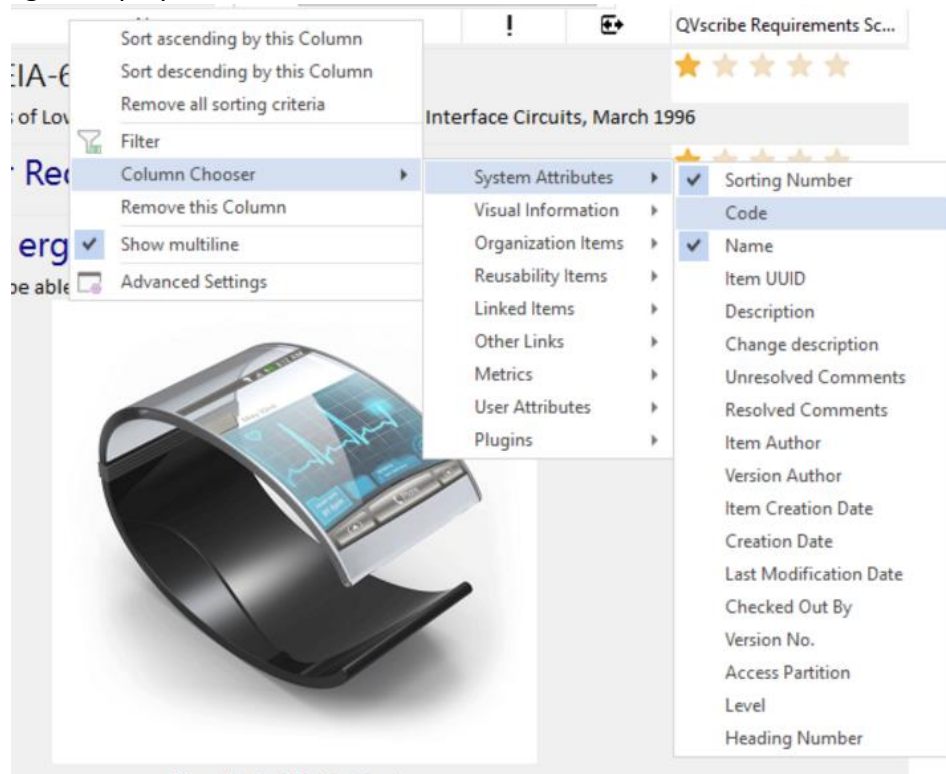


## 1.6.1.13 Cell border default value

New tables in Visure will automatically display a 1pt black cell border, so that when they are exported to MS Word, the borders are displayed.

## 1.6.1.14 Allow adding several columns to a view at once

The Column Chooser context menu has been converted into a persistent menu that does not disappear each time a new column is selecting, allowing the user to choose multiple options without having to display the menu each time:




## 1.6.1.15 Significant performance improvement in the construction of the "Heading numbers" cache.


Heading numbers column information has been included in the cache, providing a significant performance improvement for those users displaying this column.

## 1.6.1.16 Fixed width for descriptions on Document View

Descriptions in Visure will now display a fixed width that will not depend on the column width:



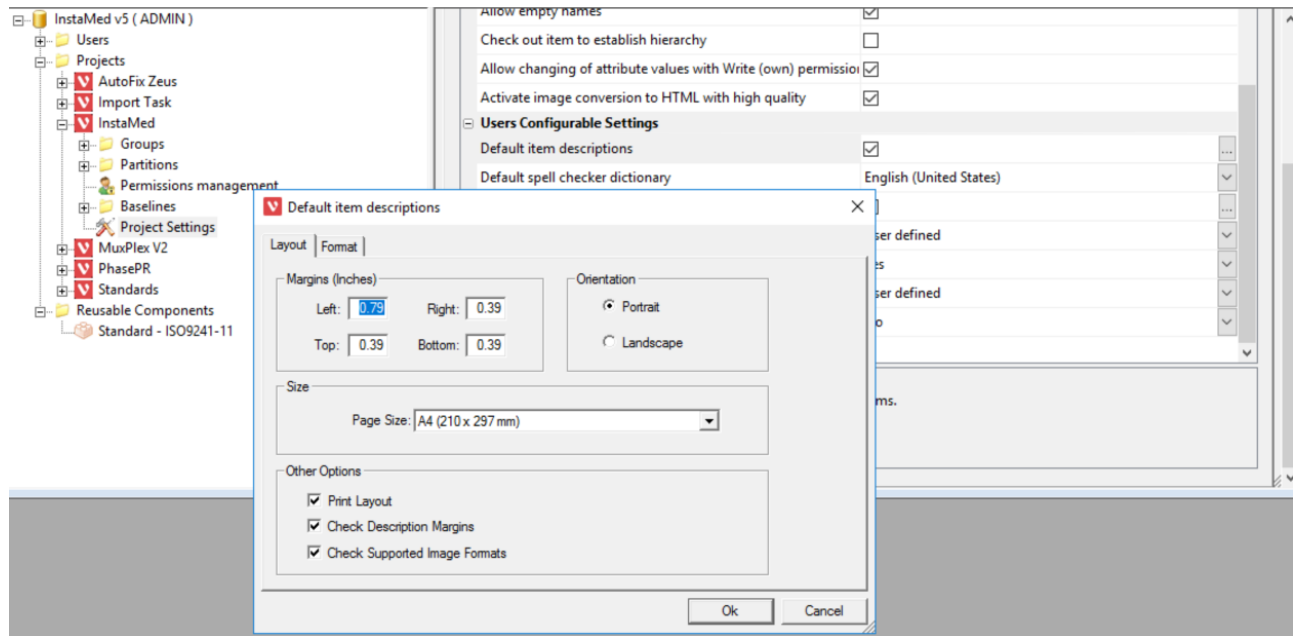
## 1.2 Document Conventions



"Shall" is used whenever the specification expresses a provision that is binding. "Should" is used to express a non-mandatory provision. "May" is used to express an implementation option or requirement exception and is not itself a requirement. "Will" is used to express a declaration of purpose on how the end item will be used or designed and is not a requirement. Non-requirement statements are shown in italics.

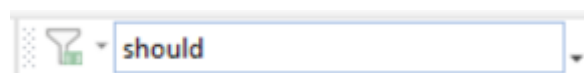
This improvement optimizes the use of the cache providing users a better performance when opening a specification consecutive times, as well as an improved experience when resizing columns. Additionally, users will be able to see at a glance whether a table or an image is outside of the margins.

The width displayed may be configured in the project settings, Default Item Description, Page Size:



## 1.6.1.17 Quick search Improvement

The quick search filter is applied one second after the last character is typed in, in order to avoid a search before the user finishes typing in the full word or sentence



## 1.6.2 Solved Issues

- **CR\_23340 – 844 - "Specification Panel" and "Ribbon" status on views**

### Problem definition

Specification panel and ribbon status were not saved into a view.

### Solution definition

The status of the Specification panel and the ribbon will be saved in a view

- **CR\_00113– 1105,1106 - Link indicator bug**

### Problem definition

When the cursor hovers over the 'link indicator' column a message appears, where all the linked items with link type, code and name are displayed.

Unfortunately sometimes there is a crypted message displayed instead of just the item name and code

```
<StackPanel>=TestBlock=atisfied by=>TestBlock=<TestBlock=&#x09;&#x09;&#x09;&#x09;&#x09;<Path Stroke=Black> Data= M 0 4 1 2 4 1 6 0 M 0 4 1 6 0 /> UserREQ_1429 - Witterungsbeständigkeit &
Umgebungseinwirkungen/TestBlock=<Zustand>
```

```
Data= M 0 4 1 2 4 1 6 0 M 0 4 1 6 0 /> SyREQ_0875 - Backendkommunikation - Erstellen einer spezifischen, zusätzlich auf dem Lader gespeicherten Na
CSO/TestBlock=<TestBlock=&#x09;&#x09;&#x09;&#x09;&#x09;<Path Stroke=Black> Data= M 0 4 1 2 4 1 6 0 M 0 4 1 6 0 /> SyREQ_0876 - Ba
CMMS/TestBlock=<TestBlock=&#x09;&#x09;&#x09;&#x09;&#x09;<Path Stroke=Black> Data= M 0 4 1 2 4 1 6 0 M 0 4 1 6 0 /> SyREQ_0877 - B
CMMS/TestBlock=<TestBlock=&#x09;&#x09;&#x09;&#x09;&#x09;<Path Stroke=Black> Data= M 0 4 1 2 4 1 6 0 M 0 4 1 6 0 /> SyREQ_0878 - B
Nachrichten/TestBlock=<TestBlock=&#x09;&#x09;&#x09;&#x09;&#x09;<Path Stroke=Black> Data= M 0 4 1 2 4 1 6 0 M 0 4 1 6 0 /> SyREQ_0
Datenquellen/TestBlock=<TestBlock=&#x09;&#x09;&#x09;&#x09;&#x09;<Path Stroke=Black> Data= M 0 4 1 2 4 1 6 0 M 0 4 1 6 0 /> SyREQ_0
DCPP/TestBlock=<TestBlock=&#x09;&#x09;&#x09;&#x09;&#x09;<Path Stroke=Black> Data= M 0 4 1 2 4 1 6 0 M 0 4 1 6 0 /> SyREQ_0881 - B
Indirekterhalten/TestBlock=<TestBlock=&#x09;&#x09;&#x09;&#x09;&#x09;<Path Stroke=Black> Data= M 0 4 1 2 4 1 6 0 M 0 4 1 6 0 /> SyREQ_0
Implementierungsregeln/TestBlock=<TestBlock=&#x09;&#x09;&#x09;&#x09;&#x09;<Path Stroke=Black> Data= M 0 4 1 2 4 1 6 0 M 0 4 1 6 0 /> SyREQ_0
Pharmakov/TestBlock=<TestBlock=&#x09;&#x09;&#x09;&#x09;&#x09;<Path Stroke=Black> Data= M 0 4 1 2 4 1 6 0 M 0 4 1 6 0 /> SyREQ_0
Verbindungsverlust/TestBlock=<TestBlock=&#x09;&#x09;&#x09;&#x09;&#x09;<Path Stroke=Black> Data= M 0 4 1 2 4 1 6 0 M 0 4 1 6 0 /> SyREQ_0
Nachrichten/TestBlock=<TestBlock=&#x09;&#x09;&#x09;&#x09;&#x09;<Path Stroke=Black> Data= M 0 4 1 2 4 1 6 0 M 0 4 1 6 0 /> SyREQ_0
Nachrichten/TestBlock=<TestBlock=&#x09;&#x09;&#x09;&#x09;&#x09;<Path Stroke=Black> Data= M 0 4 1 2 4 1 6 0 M 0 4 1 6 0 /> SyREQ_0
Security/TestBlock=<TestBlock=&#x09;&#x09;&#x09;&#x09;&#x09;<Path Stroke=Black> Data= M 0 4 1 2 4 1 6 0 M 0 4 1 6 0 /> SyREQ_0886
Zertifikate/TestBlock=<TestBlock=&#x09;&#x09;&#x09;&#x09;&#x09;<Path Stroke=Black> Data= M 0 4 1 2 4 1 6 0 M 0 4 1 6 0 /> SyREQ_0889
Zertifizierung/TestBlock=<TestBlock=&#x09;&#x09;&#x09;&#x09;&#x09;<Path Stroke=Black> Data= M 0 4 1 2 4 1 6 0 M 0 4 1 6 0 /> SyREQ_0894 - I
Zertifikate/TestBlock=<TestBlock=&#x09;&#x09;&#x09;&#x09;&#x09;<Path Stroke=Black> Data= M 0 4 1 2 4 1 6 0 M 0 4 1 6 0 /> SyREQ_08
Autoren/TestBlock=<TestBlock=&#x09;&#x09;&#x09;&#x09;&#x09;<Path Stroke=Black> Data= M 0 4 1 2 4 1 6 0 M 0 4 1 6 0 /> SyREQ_0894 - I
Device Model/TestBlock=<TestBlock=&#x09;&#x09;&#x09;&#x09;&#x09;<Path Stroke=Black> Data= M 0 4 1 2 4 1 6 0 M 0 4 1 6 0 /> SyREQ_0
zwischen Charisma Station und CMMS/TestBlock=<TestBlock=&#x09;&#x09;&#x09;&#x09;&#x09;<Path Stroke=Black> Data= M 0 4 1 2 4 1 6 0 M 0 4 1 6 0 /> SyREQ_0
```

This occurs when the item name contains the character "&"

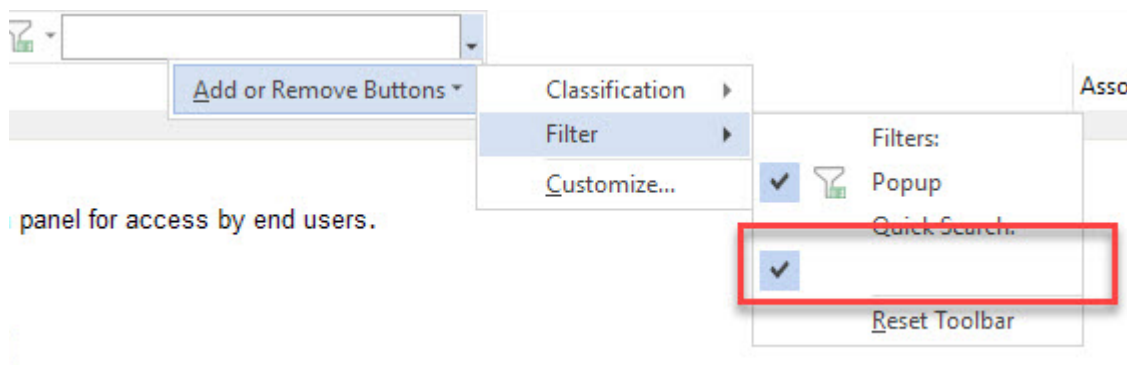
## Solution definition

The character "&" is correctly managed and the list of linked items is now correctly displayed.

- **CR\_00193 – 1193 - Empty option in "Add or Remove Buttons" selection menu**

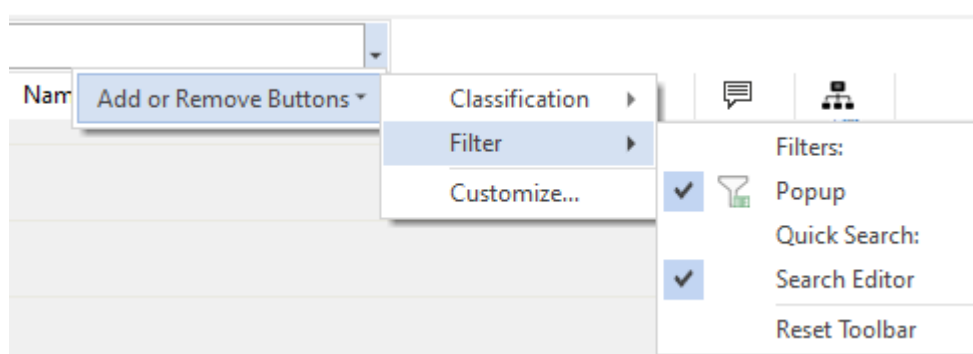
## Problem definition

The text filter option is not being correctly displayed on Add Remove buttons dialog:



## Solution definition

The filter options are not correctly displayed:



- **CR\_00185 – 872 - Cell border default value**

**Problem definition**

The default value for cell border should be set to 1 instead than 0, also if the cell border is set to 0 the description should not show any table border. This is misleading because then I would also expect that a border will be generated when exporting the specification to Word.

**Solution definition**

The default value for cell border is set to 1

- **CR\_00174 – 1172 - Error context menu to navigate to items**

**Problem definition**

In the traceability tree view, when trying to navigate to related items through the right-click, the list of elements is incorrect.

**Solution definition**

Now, the list of related items in the context menu is the correct one.

- **CR\_00232 – Empty views after project creation**

**Problem definition**

After project creation from template, some views do not show any item even though there are items in the view

**Solution definition**

The project template generation / restoration have been improved so that all views are correctly generated when creating projects based on templates.

- **CR\_00203– 1219 - Picture / Linked Picture**

**Problem definition**

Inserted pictures through the option Picture/linked picture does not work correctly, the picture is shown while editing the description inline, but when closing the description editor the picture is not shown. When opening the edit mode again the picture is displayed.

**Solution definition**

'Link to Picture' command has been deleted from ribbon and description panel

- **CR\_00235 - New Visure Web App users are requested license server and port**

## **Problem definition**

Users connecting to Visure Requirements ALM Platform through the Visure Web App for the first time are requested to enter the license server and port, even if these parameters are the default ones.

## **Solution definition**

When a user connects to Visure Requirements ALM Platform for the first time and a license is not available, the application will look for a license server at localhost@6200, which are the default parameters. If a license is not available, it will then prompt the user to enter the correct parameters.

- **CR\_00219- 1123 - MS Word Import "Compare Items" button is not clickable**

## **Problem definition**

On some MS Office 365 versions the button to compare items is never enabled on the word import addin. This happened when the Visual Studio 2013 redistributable package is not installed on the host PC.

## **Solution definition**

VS 2013 component will be installed and registered so that all buttons are correctly enabled.

- **CR\_00243- 1366 – Changes on descriptions not saved**

## **Problem definition**

The first time we edit the description the changes are saved, but at certain point after several editions and display / close of the description panel the changes made on the inline description are not being saved. This is caused by an internal conflict between the inline description and the classic description panel.

## **Solution definition**

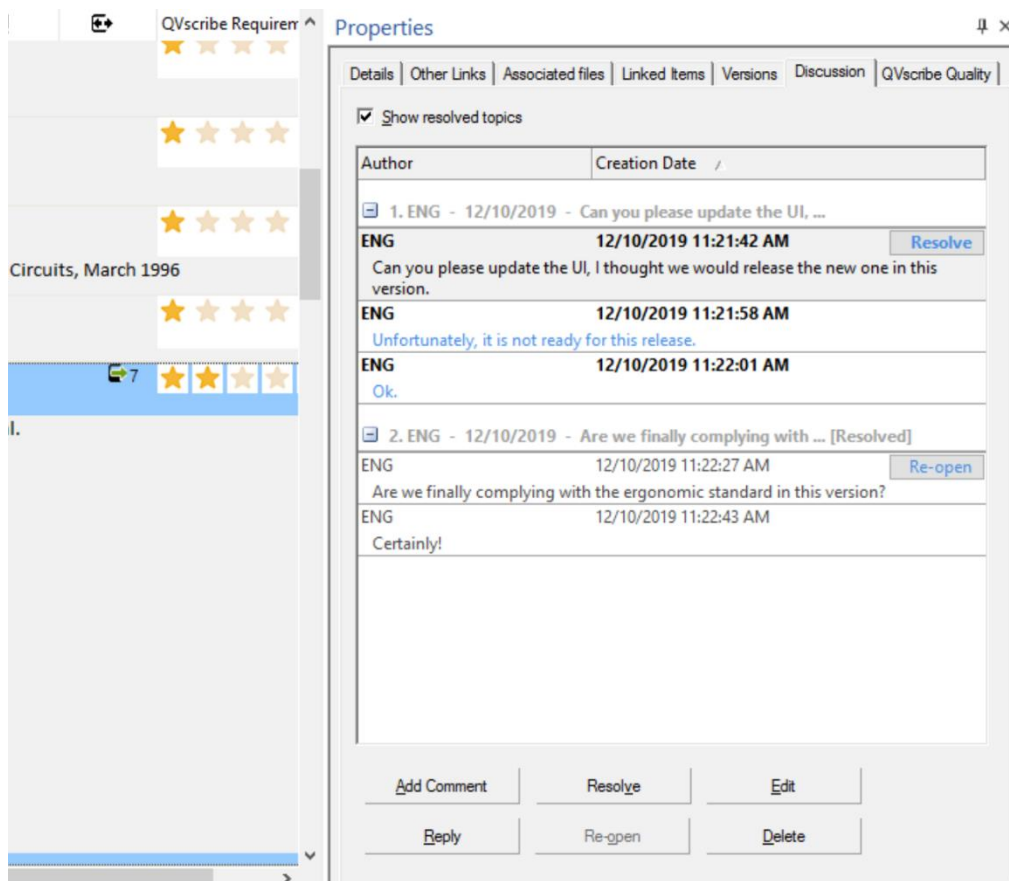
The incompatibility between both description panels has been solved and now all changes made on descriptions are correctly saved.

## 1.7 Visure Requirements ALM 5.2

### 1.7.1 New features, enhancements and usability improvements

#### 1.7.1.1 *Improved Discussions*

In order to improve collaboration between team members and avoid unnecessary emails Visure incorporates a new Discussion tab in which users may enter comments on requirements and other users may reply to them. Once the initial comment is answered, the author of the comment or project managers will be able to resolve the overall thread of initial comment and replies. If for whatever reason, the users find out that the comment was, in fact, not properly resolved, they can re-open the comment.

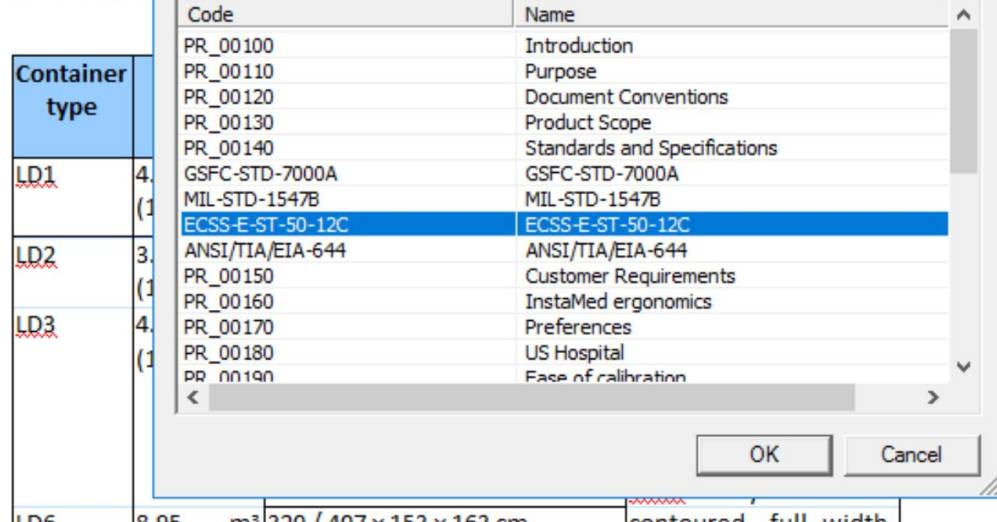


## 1.7.1.2 Cross-references

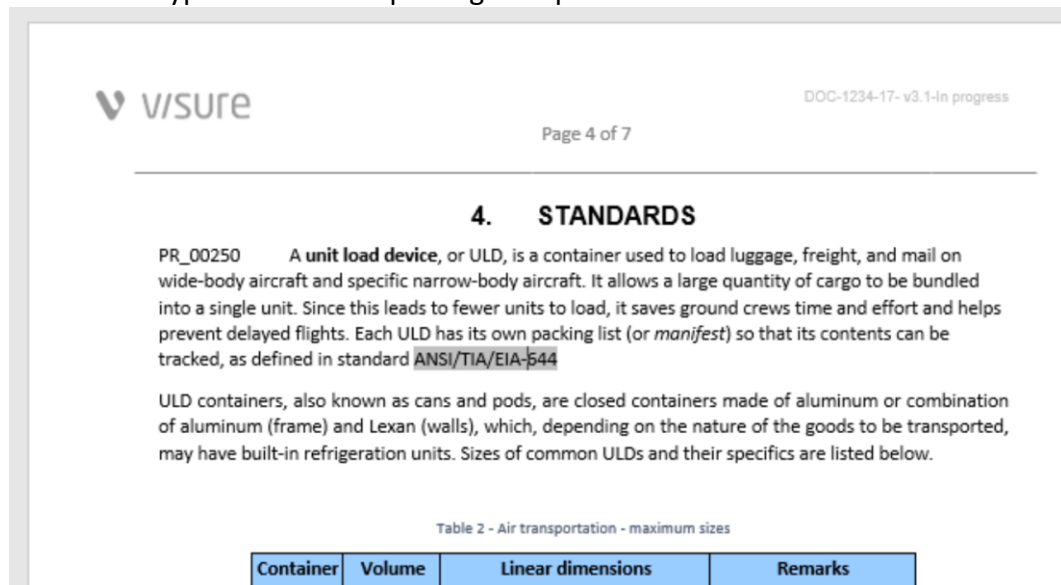
Most authors users are used to working with MS Word and the editorial features it provides. Among these, cross-references are a prominent capability that allow referencing a part of the document from another one. Visure Requirements ALM 5.2 includes a new cross-reference feature that allows users reference a specific item from within a requirement's description.

A **unit load device**, or **ULD**, is a container used to load luggage, freight, and mail on wide-body aircraft and specific narrow-body aircraft. It allows a large quantity of cargo to be bundled into a single unit. Since this leads to fewer units to load, it saves ground crews time and effort and helps prevent delayed flights. Each ULD has its own packing list (or *manifest*) so that its contents can be tracked, as defined in standard

ULD containers, also known as **cans** and **Pods**, are closed containers made of aluminum or combination of aluminum (frame) and **Lexan** (walls), which, depending on the nature of the goods to be transported, may have built-in refrigeration units. Sizes of common ULDs and their specifics are listed below.



This reference will be converted to a native MS Word cross-reference, with the corresponding tag dynamic name and hyperlink when exporting the specification to MS Word.



## 1.7.2 Solved Issues

- **CR\_22570 -914, 651- Copy and paste code**

### Problem definition

When pasting elements in a specification, the codes do not follow the prefix of that item collection.

For instance, if we paste in Product Requirements, the new requirements should take the prefix PR\_



**Solution definition**

Now when copy pasting elements, the code will follow the target specification prefix if exist.

- **CR\_22560 - 643 - Project code configuration Prefix automatically populated**

**Problem definition**

When an Automatic Recoding is performed, the prefix is populated automatically to the Project Code Configuration.

This results in duplicating the prefix, for instance PR\_PR\_XXXXX

**Solution definition**

Automatic recoding will not update the project code configuration.

- **CR\_00117 - 1032 - Attribute value history not available in Visure Requirements**

**Problem definition**

When changing the scope of an attribute from “Items” to some selected specifications, the previous versions of Items does not display the value of this attribute.

**Solution definition**

Past versions of Items will now show the value over attributes even if the attribute scope is changed.

- **CR\_22640 - 852 - 'Invalid Port' message and Visure shuts down**

**Problem definition**

When running Visure Requirements a message with text “invalid port” is shown, and after a few minutes Visure shuts down.

**Solution definition**

A new licensing mechanism has been implemented in Visure Requirements 5.2

## 1.8 Visure Requirements ALM 5.1

## 1.8.1 New features, enhancements and usability improvements

### 1.8.1.1 Project Dashboards

Dashboards in Visure 5.1 are now part of the built-in functionality of Visure, displayed as a view in the product.

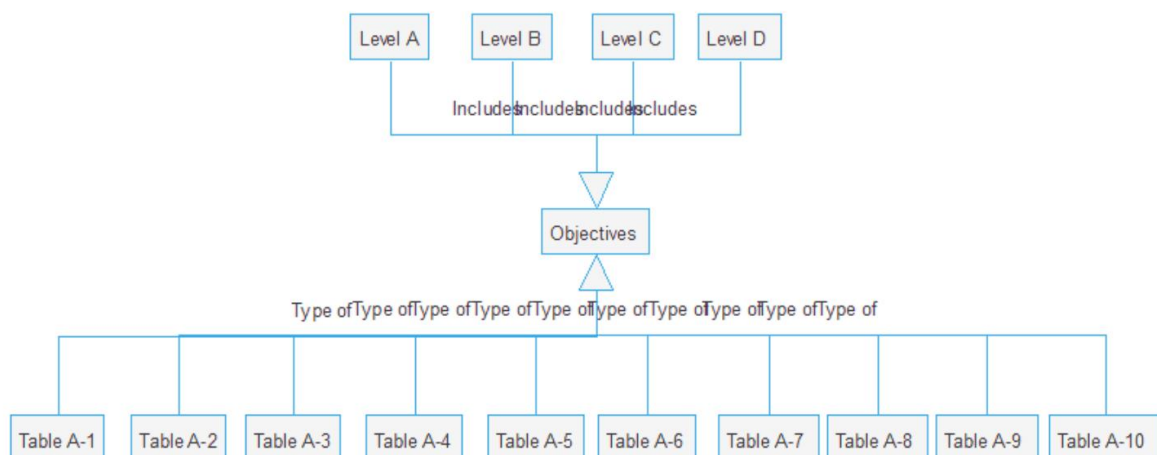
Now, different projects can have separate dashboards. The path to the corresponding dashboard can be defined in the “Dashboard Template” project attribute.

### 1.8.1.2 Reusability Improvement

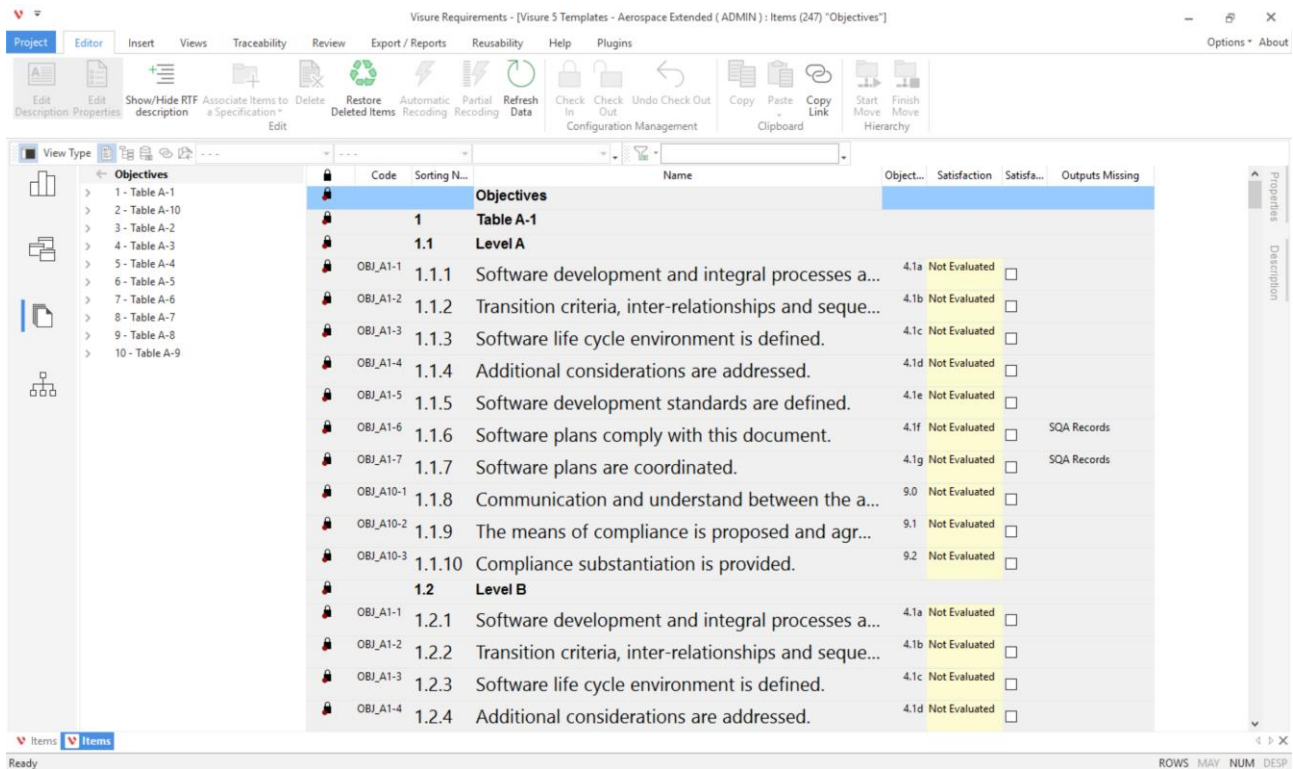
Reusability has been improved by simplifying the creation of new components, allowing users to select a set of specifications and the relationships between them. Additionally, performance and stability of this feature has been improved as well.

### 1.8.1.3 New templates

Visure 5.1 provides an improved set of project templates, including a new Aerospace Extended template representing the DO-178B/C Objectives.



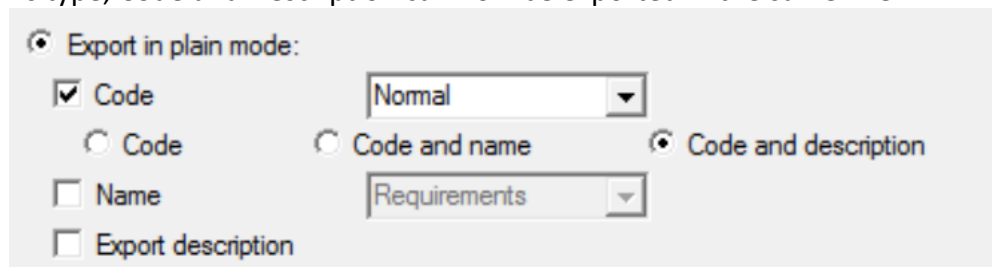
Each goal includes a reference to the corresponding section, a completion status and a set of references to external documents.

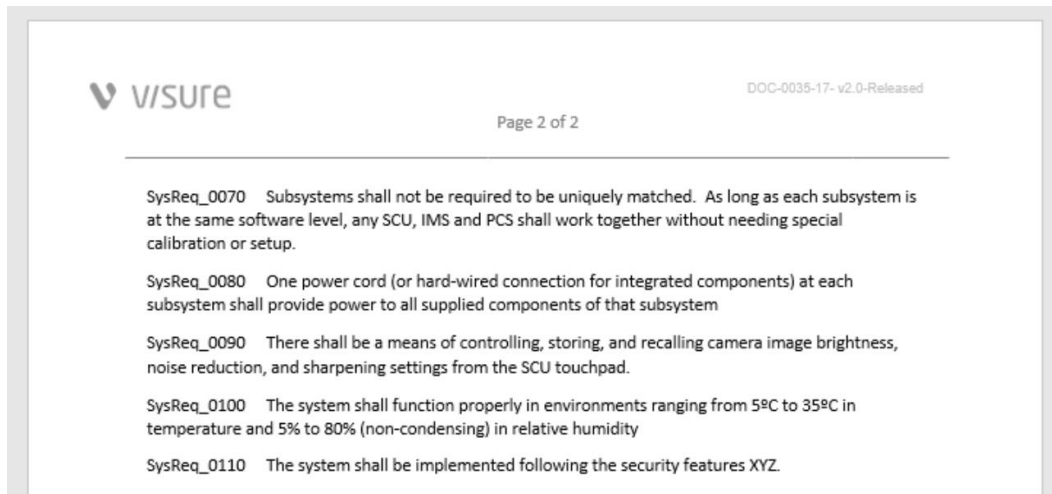


## 1.8.1.4 New export to MS Word

The new export to MS Word capability allows users that do not use a name for the requirements to export this information closer to a standard specification.

For the items type, Code and Description can now be exported in the same line.





### 1.8.1.5 *New advanced tutorial*

Visure now includes a new Advanced Tutorial that describes some of the basic concepts in Visure from an administration perspective, including users, groups, partitions and permissions. This new tutorial also covers the basic aspects of creating a proper data model set, including specifications, attributes, workflows and views.

This new Advanced Tutorial will be accessible from the Help tab in the Ribbon as online help (CHM), as well as in the Windows Start menu as a PDF file.

### 1.8.1.6 *New background color for table cells*

Tables can now be formatted in a similar way as MS Word, including the capability to define a background color for the cells in the inline description. This capability was exclusively available in the Description panel.

## 1.8.2 Solved Issues

- **CR\_21970 - 541,639 - Import Tool adds empty lines in description field**

#### **Problem definition**

When reimporting an Excel file, blank spaces were added to the description

#### **Solution definition**

The import process has been solved to prevent this behavior.

- **CR\_23100 - 807 - Check size of images in inline description**

#### **Problem definition**

While working with the inline description, user must be notified that an inserted image is bigger than the page margins.

#### **Solution definition**

The inline description notifies the user when an image is outside of the margins.

- **CR\_VR\_00031 - 885 - Date Control not working properly**

## **Problem definition**

Having a date format defined as DD/MM/YYYY, with certain regional configuration, certain date formats would automatically change to MM/DD/YYYY

## **Solution definition**

The date format is taken for the computer's regional configuration

- **CR\_VR\_00032 - 921,940,920 - Filters with .NET Framework 4.8**

## **Problem definition**

After updating .net framework to version 4.8, the filter editor doesn't work anymore.

## **Solution definition**

The filter editor has been adapted to the Windows .net framework 4.8 requirements.

- **CR\_22590 - 638- Scroll does not work on enumerated attribute columns**

## **Problem definition**

When displaying columns with some attributes columns, the scroll in the mouse would not work properly.

## **Solution definition**

The events in some of the cells have been overridden, to keep the control in the mouse and enable scrolling. Scrolling will work on all columns except enumerated multivalued attributes ones

- **ReqIF automatically removed carry returns in certain character sets**

## **Problem definition**

The ReqIF import process sometimes removed carry returns in certain character sets

## **Solution definition**

The ReqIF import process no longer removes carry returns.

- **CR\_22910 - 748- Inline editing of the description was not saved when checking in**

## **Problem definition**

When editing a description through the inline editing and checking an element in without clicking outside of the field, the information would not be saved, requiring users to click outside of the field before checking in to save the description

## **Solution definition**

The Check In process automatically saves the description, even if it is being edited.

- **CR\_23120 - 816 - Error with Quick Insert without access rights over partition**

## **Problem definition**

When the user did not have access rights over the same access right as the selected element, the quick insert capability would not allow the user to create new items

## **Solution definition**

The Quick Insert feature validates the access rights to the different access partitions, and selects an appropriate access partition, or displays an error message if the user does not have access rights.

- **CR\_23030 , CR\_23040 - 763 - Plugins and Reports options disabled when opening a new view**

## Problem definition

The reports and plugins buttons in the ribbon would be disabled when opening a new view.

## Solution definition

Opening a new view does not disable the reports or plugins features in the ribbon.

- **CR\_23320 – 814 - Project and Specification prefix**

## Problem definition:

When project and specification prefix are defined, the code is structured like this:

Specification\_ Project\_ Item code

## Solutions definition

When project and specification prefix are defined, the code will be structured like this:

Project \_Item code\_ Specification

## 1.9 Visure Requirements ALM 5.0

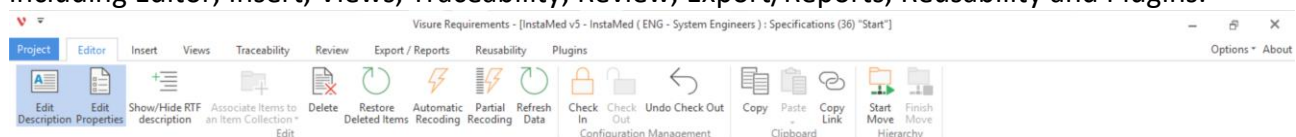
### 1.9.1 New features, enhancements and usability improvements

#### 1.9.1.1 New Look & Feel

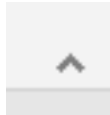
Visure 5.0 provides a complete new look&feel, specifically designed to provide a more comfortable and streamlined environment for end users. This new look and feel includes general improvements in user interface, such as colors, font types and sizes, as well as user experience improvements, such as redefined navigation patterns and terminology. All these improvements are targeted towards providing users with an overall better experience with the tool.

#### 1.9.1.2 New Ribbon

Visure 5.0 has a completely redefined Ribbon bar, in which the most common features have been grouped based on priority and goals. The Ribbon bar groups these features in different categories including Editor, Insert, Views, Traceability, Review, Export/Reports, Reusability and Plugins.

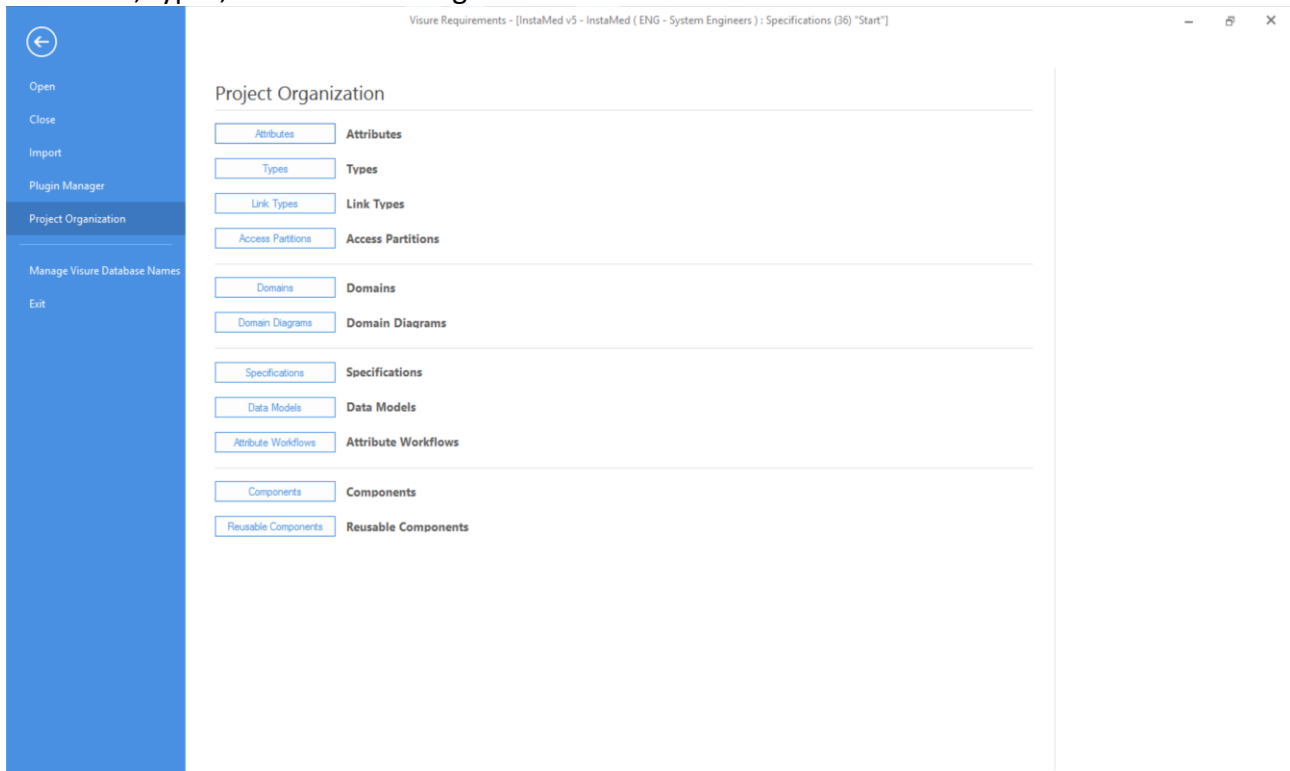


In order to provide more working space, the Ribbon bar can be collapsed either by double clicking on any of the tabs, or by using the collapse button at the bottom right corner of the Ribbon.



### 1.9.1.3 New Backstage

The Ribbon bar displays a new Project option, that takes the user to a backstage menu. This menu includes direct access to all the Project Organization features such as specifications, data models, attributes, types, workflows among others.



### 1.9.1.4 New Element Types panel

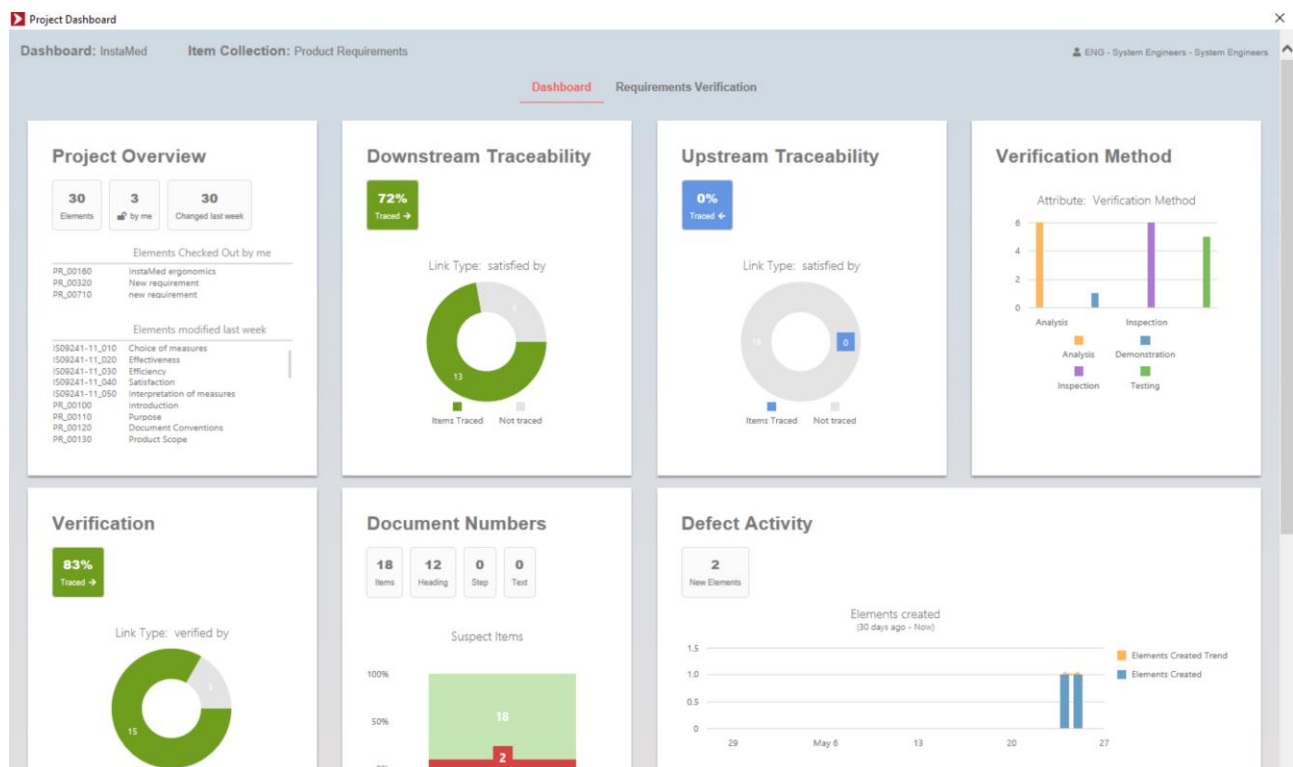
In order to streamline the access to the key elements in Visure, the new user interface includes a new Element Types Panel at the left-hand side, that provides quick access to:

- Dashboards
- Views
- Specifications
- Data Models



## 1.9.1.5 Dashboards

The new dashboards view incorporates project specific information and metrics by means of widgets. Dashboards are contextual and provide different information based on where they are triggered from, if triggered from within a specification, all widgets will display specification-specific information, whereas if opened from the Specifications view, they will display overall project information.



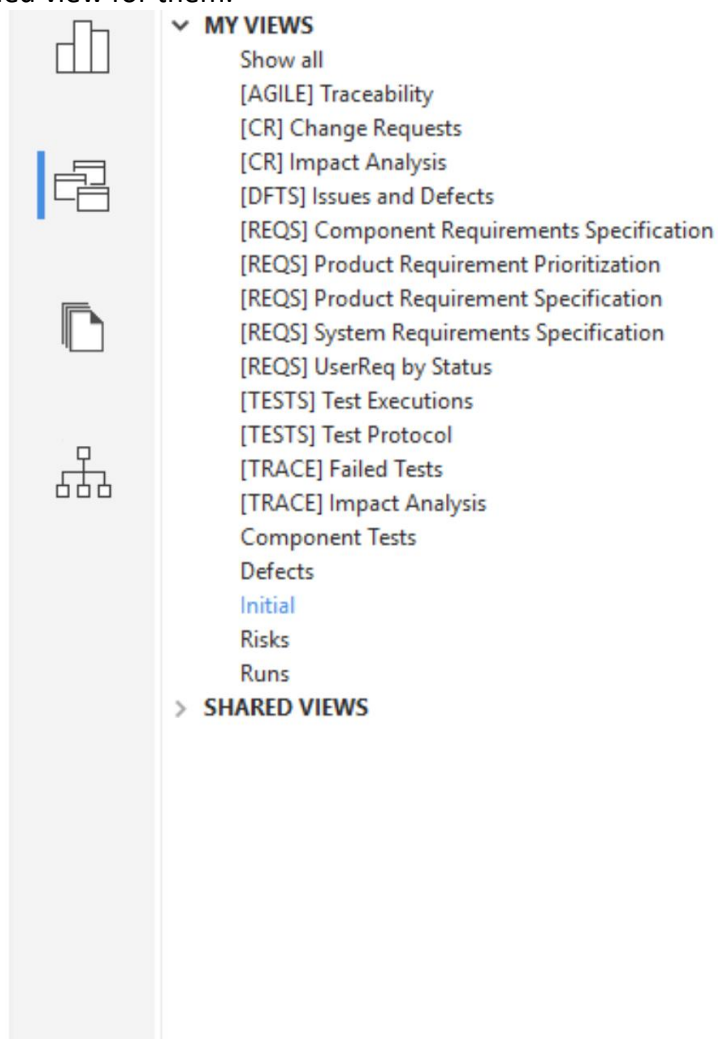
## 1.9.1.6 Views

All user views are now displayed under the My Views category in the Views panel, and all shared views under the Shared Views category, and can be opened directly from this menu.

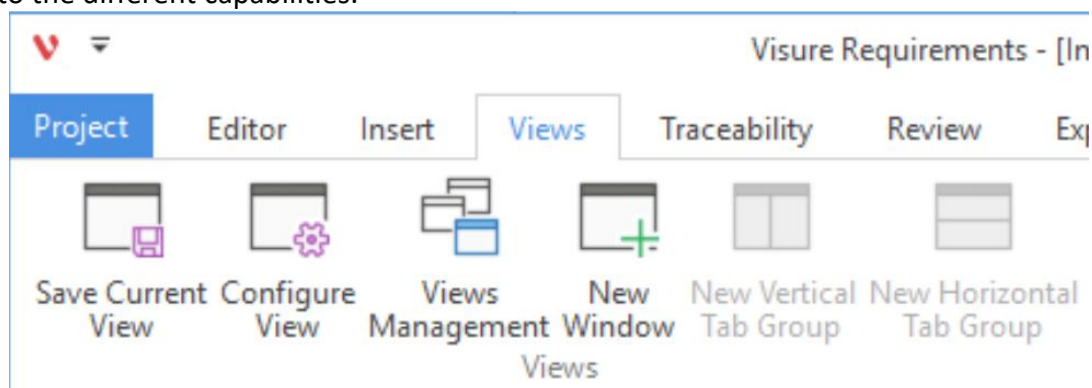


Views can now be predetermined for one specification, so that every time a specification is opened, it will open in a specific way e.g. Product Requirements will show requirements in a document format, but the Risks specification will display elements in a table format with specific columns.

Views can also be predetermined for all specifications, except for those that already have a specific predetermined view for them.

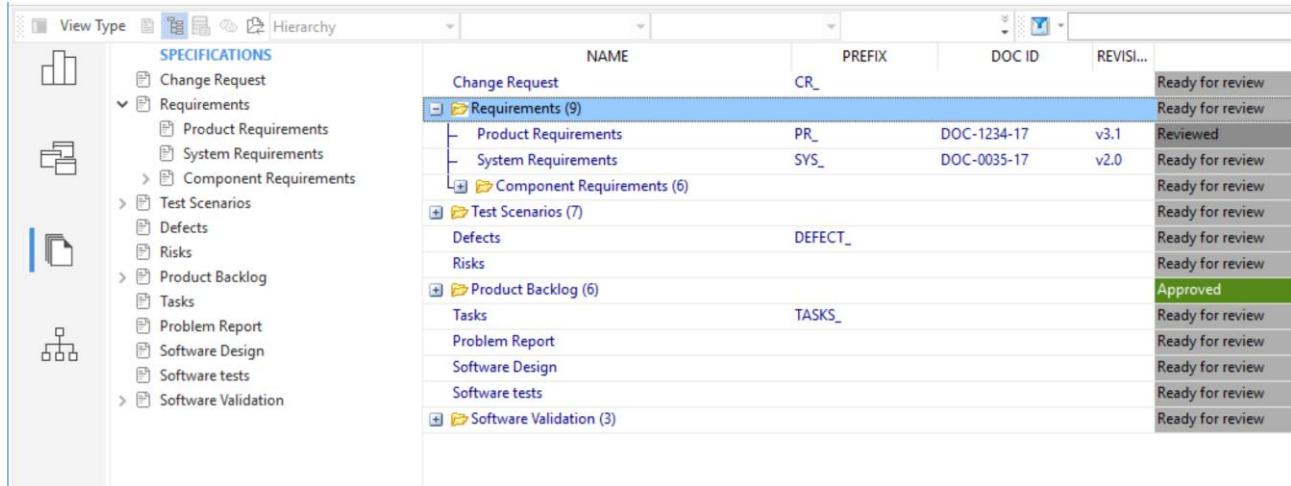


Views also include a new Views tab in the Ribbon that provides users a unified and streamlined access to the different capabilities.



## 1.9.1.7 Specifications

Specifications (formerly Item Collections) have a dedicated view that displays the complete list of specifications and hierarchy between them.



NAME	PREFIX	DOC ID	REVISI...	Status
Change Request	CR_			Ready for review
Requirements (9)				Ready for review
Product Requirements	PR_	DOC-1234-17	v3.1	Reviewed
System Requirements	SYS_	DOC-0035-17	v2.0	Ready for review
Component Requirements (6)				Ready for review
Test Scenarios (7)				Ready for review
Defects	DEFECT_			Ready for review
Risks				Ready for review
Product Backlog (6)				Approved
Tasks	TASKS_			Ready for review
Problem Report				Ready for review
Software Design				Ready for review
Software tests				Ready for review
Software Validation (3)				Ready for review

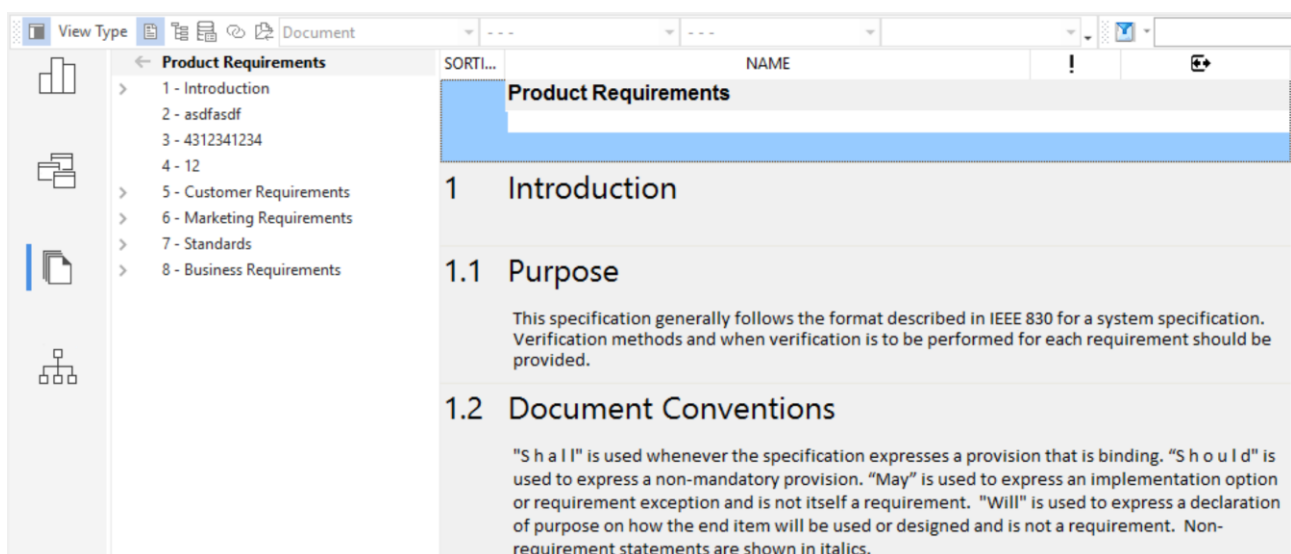
This view allows users to navigate to each specification by clicking on them in the browser window at the left.

The grid displays not only the list of specifications, but also any attribute that they may take, such as Prefix, Document Identification, Release, or any other custom attribute.

Specifications can be managed directly from this grid, allowing users to create, edit, delete, sort and even classify them directly from here.

When navigating to a specification, the browser will automatically change to a navigation panel displaying the list of items in it.

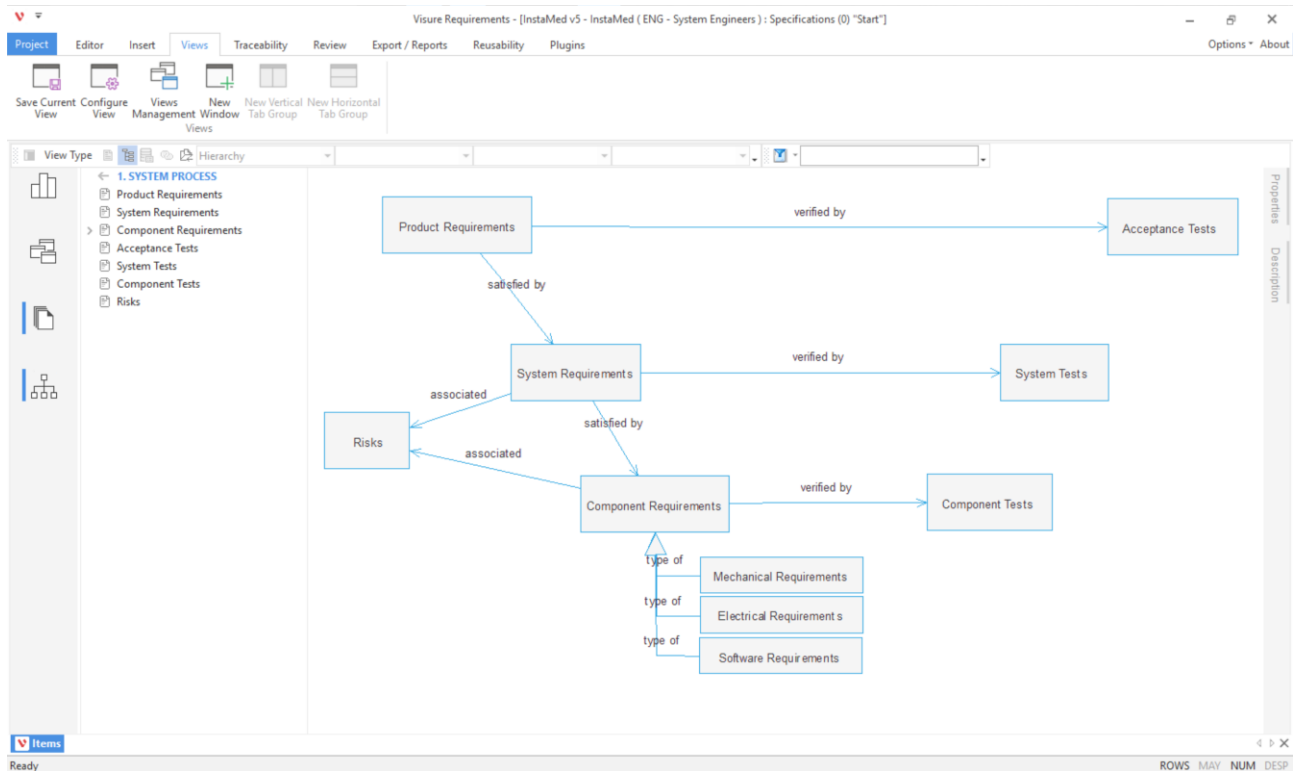
Users will be able to navigate back to the list of specifications by clicking on the back arrow.



NAME	SORTI...	Status
Product Requirements		
1 - Introduction		
2 - asdfasdf		
3 - 4312341234		
4 - 12		
5 - Customer Requirements		
6 - Marketing Requirements		
7 - Standards		
8 - Business Requirements		

## 1.9.1.8 Data Models

The Data Models view is a completely new view that displays the list of Data Models for information and navigation purposes. The browser window will display the list of Data Models so that the users can easily select one of them. When clicking on a Data Model, Visure will display the list of specifications in that Data Model in the browser panel and a preview of that Data Model in the grid.

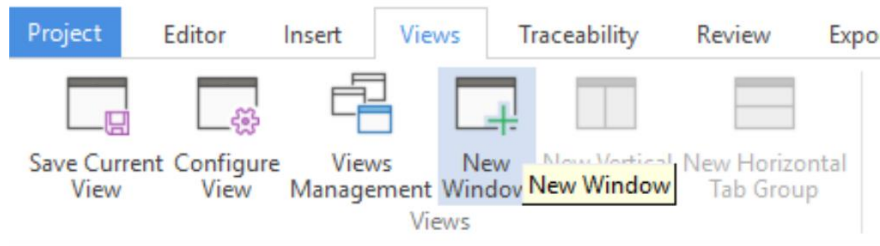


The user will be able to navigate to any of the specifications directly from the browser panel in this view.

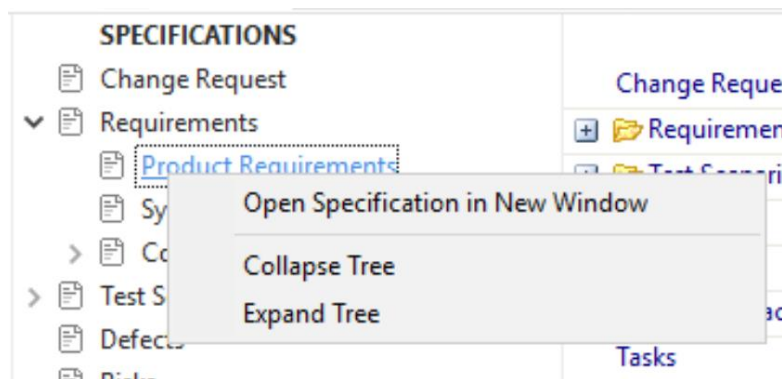
This type of view allows users to focus on a specific portion of the project delimited by the Data Model, allowing them to reduce the complexity of the information displayed. For instance, software teams will be able to see only those elements relevant to their processes, but will still have access to other portions of the project, and hence, preventing isolation while maintaining simplicity.

## 1.9.1.9 Window management

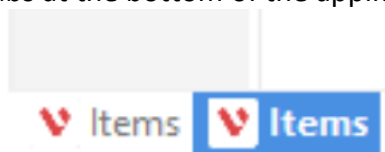
The View tab in the Ribbon bar includes new window management features, that allows users to open a new window and tile it vertically or horizontally for convenient tracing of elements between specifications.



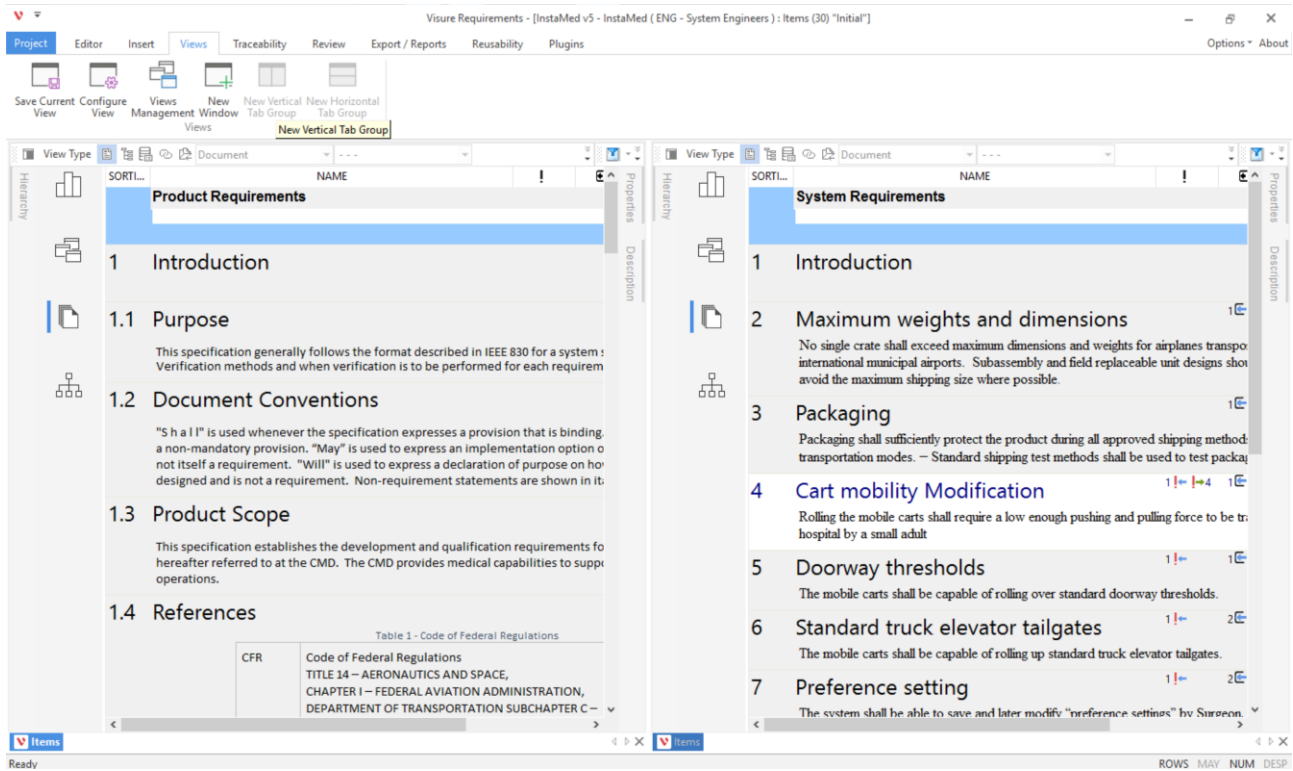
Users will also be able to right click on top of specifications in the browser panel to open them in a different window.



Windows will be represented as tabs at the bottom of the application for easy access.

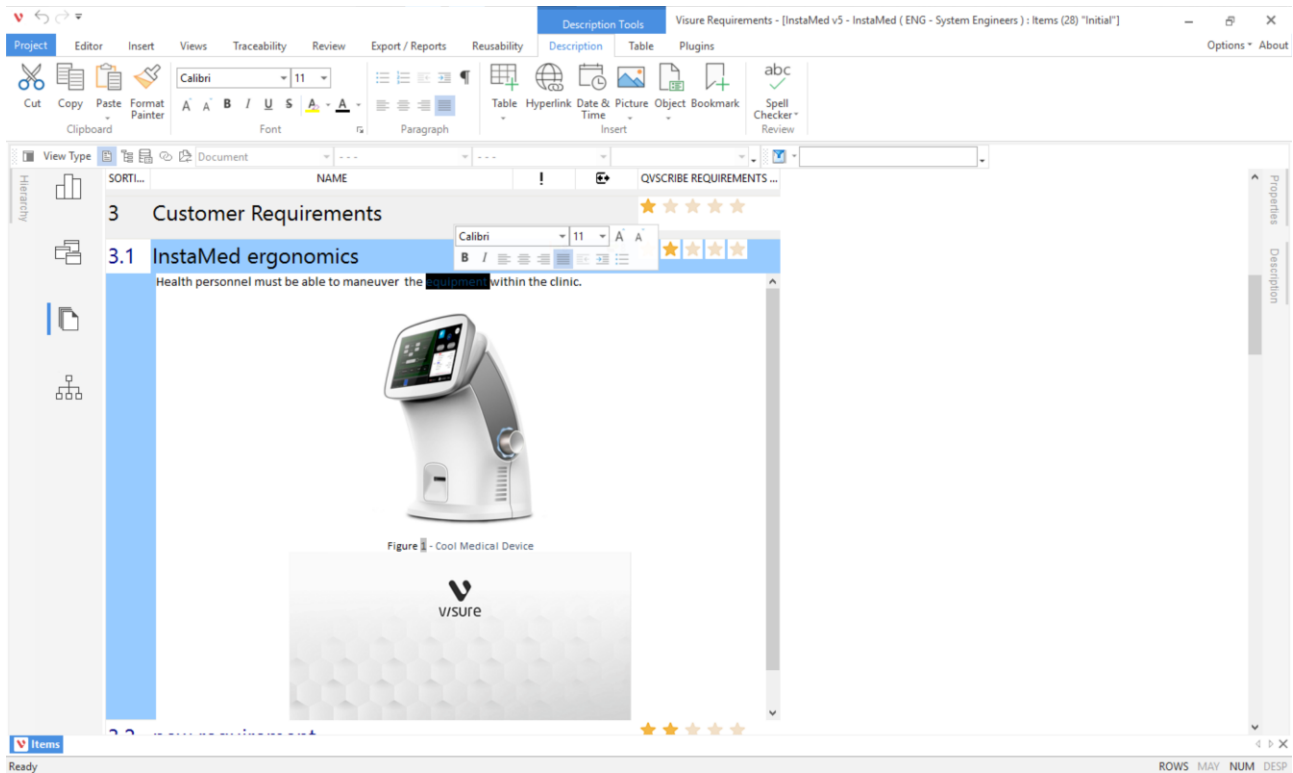


These tabs can also be dragged in order to dock them to the sides of the user interface and place them side-by-side. This can also be achieved through the New Vertical and Horizontal Group.



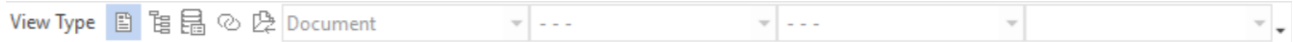
## 1.9.1.10 Inline descriptions

A new description inline editing capability is available, even though the former Description panel is still available. Users will be able to edit descriptions simply by double clicking on them. The Ribbon bar will display a new Description tab that will display all RTF editing features to include images, tables and other objects.



#### 1.9.1.11 New Classification options

The new classification toolbar



Allows users to access all the different ways of classifying the items of the selected specification, including:

1. Document
2. Hierarchy (Table)
3. Attributes
4. Traceability Tree
5. Access Partition

These views can be tailored from the combo boxes displayed in the same toolbar.

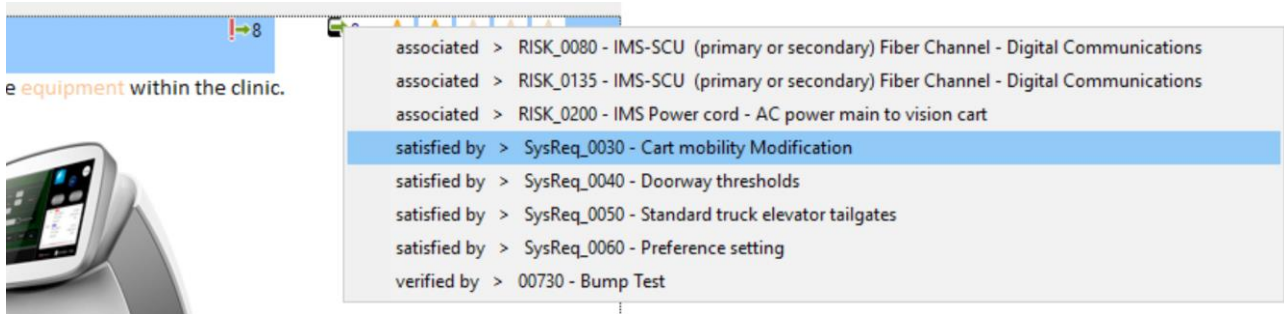
#### 1.9.1.12 New Search toolbar

The new search toolbar searches both on displayed columns and requirement descriptions.



## 1.9.1.13 New navigate between requirements

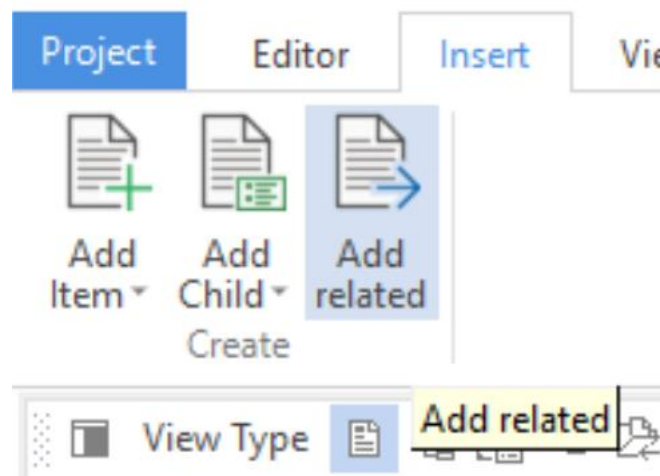
Users will now be able to quickly navigate between items in the project by right-clicking on any of the columns or tabs that display traceability (Suspect Link Indicators, Link Indicators, Link Type columns and Linked Items tab).



Selecting the item will automatically open the corresponding specification and select the corresponding item.

## 1.9.1.14 New Add Related

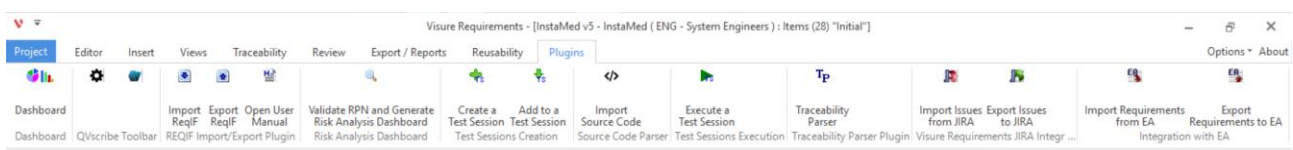
The new Add Related



feature allows for the creation of new items automatically traced to the selected item, for instance, a new system requirement out of a product requirement, a defect from a failed test case, or a change request from a requirement.

## 1.9.1.15 Plugins

Plugins are now display in a new Plugins tab in the Ribbon panel, keeping them grouped together and quickly accessible:





## 1.9.1.16 Double click does not checkout

Double clicking no longer checks out an item, and users are required to use either the context menu or the option in the Ribbon bar to check out items.

## 1.9.1.17 Changes Admin Center

The Administration center has been modified to adapt it to the new features in the Visure 5.0 client.

## 1.9.2 Solved Issues

### 1.9.2.1 Visure Requirements Client (6)

**CR\_21720 532 Hierarchy view - sort by code:** In a hierarchy view sorted by code elements are sorted this way: 1, 1.1,1.10,1.2 ... and the correct order should be: 1,1.1,1.2,1.10...

#### Problem definition

In a hierarchy view sorted by code elements are sorted this way:

[-] 1. (10)	INTRODUCTION
1.1	DEVICE OVERVIEW
1.10	testt
1.2	DOCUMENT SCOPE
1.3	PRECEDENCE
[+] 1.4 (2)	TERMINOLOGY

#### Solution definition

Now elements in a hierarchy view sorted by code are sorted this way:

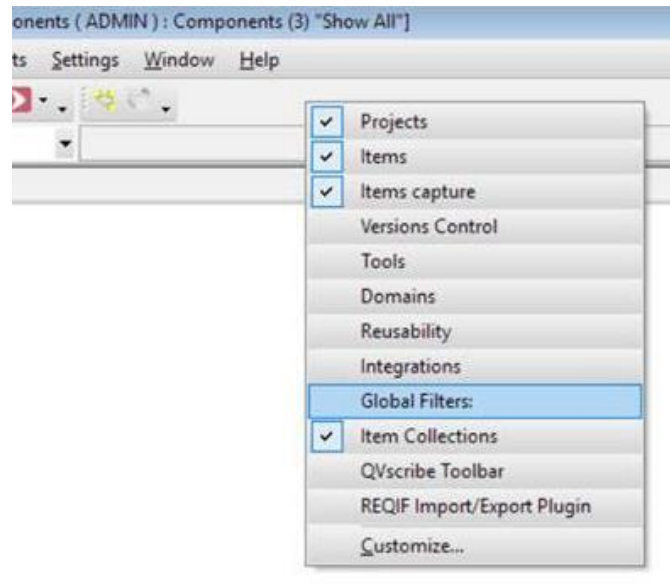
[-] 1. (2)	INTRODUCTION
1.1	DEVICE OVERVIEW
1.2	DOCUMENT SCOPE
1.3	PRECEDENCE
[+] 1.4 (2)	TERMINOLOGY
[+] 1.5 (2)	APPLICABLE DOCUMENTS
1.10	testt

- **CR\_21920 Toolbars selection typo - The text for global filters in the toolbar selector includes: in the name, it should be Global Filters**



## Problem definition

The text for global filters in the toolbar selector includes: in the name, it should be Global Filters



## Solution definition

This menu is no longer available in version 5

- **CR\_22650 591 Images not displayed on export to word**

## Problem definition

When exporting to word some images are not shown and the following message is displayed in the word document:

---

**Cannot show description.**  
**Description size is too large.**

---

This happens if the whole RTF description exceeds the limit of 8MB

## Solution definition

Now there is no size limit on the export to Word

- **CR\_21980      578              Loss of changes on elements when creating a baseline**

#### **Problem definition**

In the following scenario the changes made on attributes values after the attribute type is checked in are lost:

Check out attribute type  
 Check out item  
 Change value on the attribute  
 Check in item  
 Check in attribute type (or create a baseline)

When back in the view, the attribute value is back to the previous value .

The same can happen with Item Collections, Diagrams etc., after creating a baseline Items IC allocation may get lost if elements are checked out.

#### **Solution definition**

Now checked out elements are correctly checked in during the baseline creation process so no changes are lost.

- **CR\_22610      540              Excel import problem. Huge fonts**

#### **Problem definition**

Importing items from an Excel file sometimes leads to huge fonts in the description when the description starts with a number.

#### **Solution definition**

Now elements with a description that starts with a number are correctly processed and imported into the description field.

- **CR\_22750 Traceability Matrix              Descriptions in bottom rows not showing**

#### **Problem definition**

The traceability matrix does not show the descriptions as tooltips for the bottom last 15 rows in a long list of elements.

#### **Solution definition**

Now description tooltips are displayed in the whole matrix.

## 1.10 Visure Requirements 4.9.1

## 1.10.1 New features

### 1.1.1.1 Dashboards

The Visure dashboards plugin provides a set of predefined HTML pages, each one of them containing customizable widgets that display information on the project, the current specification or a predetermined specification.

These widgets may display information on the progress of the project through general information and volatility, fulfillment of a specification through coverage diagrams, or the accomplishment of a test execution through Test Status Summary reports.

### 1.1.1.2 Source Code integration plugin

The new source code integration plugin allows importing a folder containing source code files in Visure Requirements, representing files and functions as items, in order to be able to trace them to low-level requirements. The parser imports over 40 programming languages, including C, C++, C#, Java and VHDL.

It also includes an unattended mode that helps establish a batch process to keep the source code representation in Visure Requirements permanently updated with any modifications in the files.

### 1.1.1.3 MS Word import plugin

The MS Word import plugin creates a new button in MS Word that allows importing complete specifications in Visure Requirements.

This new version allows re-import documents by comparing the contents of the MS Word document with the information in Visure Requirements, flagging the requirements that have been modified in the Word document and those that have been created new.

### 1.1.1.4 Improved project templates for standard compliance

Visure Requirements provides improved out-of-the-box project templates for standard compliance for Aerospace, Defense, Automotive, Medical Devices and general Systems Engineering environments.

### 1.1.1.5 Quick insert

Visure implements an enhanced way of creating items intended to help users in the requirements authoring. Visure provides two modified buttons, Add Item (INS shortcut) and Add Child Item (Shift + INS shortcut). When these options are selected, instead of displaying a dialog box a new item (or child item) will be created automatically right after the selected one. The new item will have the following characteristics:

- The new item will belong to the same item collections as the selected one
- The new item will belong to the same access partition as the selected one
- The name of the new item will be empty, or display a dash "-" if empty names are not allowed.

- If the corresponding option is selected, the new item will inherit the same attribute values, except for the workflows, as the selected item.
- If the corresponding option is selected, the new item will inherit the same incoming relationships as the selected item.
- If the corresponding option is selected, the new item will inherit the same incoming relationships as the selected item.

Visure provides a new Configure Quick Insert option in the Edit menu, where the user will be able to configure the behavior of the Quick Insert feature.

Through the Edit menu, the user will be able to create up to 10 items in bulk.

### ***1.1.1.6 Add related feature***

Visure displays a new Add Related option, that will allow the user to create a new item automatically related to the selected item. When selecting this option, a dialog box will be displayed allowing the user to select the type of the new item (item collection), which will depend on the items that can be related to the selected one. For instance, if a Product Requirement is selected, only System Requirements and Acceptance tests may be created, but not Software Requirements. This will depend on the specific Data Models used in the project.

Please note that the new item will only belong to the selected item collection, so the new item might not be displayed in the current view.

### ***1.1.1.7 Create database template***

The Visure Administration Center includes a new capability when right-clicking to export the complete database to an ipt file, that will contain all of the information in the database.

### ***1.1.1.8 New tutorial***

Visure now incorporates a new tutorial project that explains a more efficient and proven way of using Visure Requirements, aligned with the existing Visure Requirements templates. This tutorial features Requirements Management, Test Management, Change Management, Defect and Issue tracking and Risk Management.

### ***1.1.1.9 New triggers in plugins***

The Plugin SDK provides new triggers that can be used to launch actions when a specific action is performed.

### ***1.1.1.10 New integration framework for unattended integrations***

The new integration framework provides the skeleton for the development of an integration. This skeleton now provides the capability to execute the configuration based on a batch file, which enables a synchronization of items between tools in the background without user's interaction.

## 1.10.2 Enhancements and Usability Improvements

### 1.1.1.11 Smooth scrolling

Visure implements a new scrolling mechanism in which the user will be able to scroll smoothly through the requirements in a MS Word-like way, opposed to the previous cell scrolling (MS Excel-like). This new scrolling capability will allow users to scroll through descriptions larger than the actual screen height for specifications smaller than 1,000 objects.

### 1.1.1.12 Description cache

Descriptions now implement a new cache mechanism that allows a quicker representation when displaying larger images and OLE objects. Once the image is loaded in the cache, it will be displayed almost instantaneously, improving performance significantly when working with larger requirements.

### 1.1.1.13 Relationship cache

Relationships now implement a new cache mechanism that allows a quicker representation of the Link Indicators column, as well as the Link Types columns. This cache significantly improves the performance when displaying large amounts of links in the view.

### 1.1.1.14 Status of the navigation panel

The navigation panel will display the hierarchy collapsed by default so that users are able to find the desired specification and objects in an easier way. Once the application is opened, the navigation panel expand/collapse status will not change unless the user does so manually.

### 1.1.1.15 Access to panels from context menu

The Edit menu and the context menu now displays an option to show the Description and Properties panel.

### 1.1.1.16 New shortcuts

The description panel features two new shortcuts including Ctrl + S to save and Ctrl + I to apply italics to the selected text.

## 1.10.3 Solved Issues

### 1.1.1.17 Visure Requirements Client (8)

- **CR\_21620 479 Increase the number of views in drop down menu**

#### **Problem definition**

It is not possible having more than 25 views

#### **Solution definition**

The number of views in the drop down menu should be increased to 50

- **CR\_21670 Shared Predetermined view overwrites user's predetermined view**

**Problem definition**

The user's predetermined view should prevail over a shared predetermined view.

Currently, if a view is shared and established as predetermined, the user cannot change it, even if the user establishes another one as predetermined.

**Solution definition**

User's predetermined view always prevails over anybody else's view.

- **CR\_02090 Properties tab transition and size**

**Problem definition**

Properties and details tab have a lag when opening and there's a refresh issue when they are not docked.

**Solution definition**

The properties and details tab no longer have a lag while opening.

- **CR\_21870 Exclude elements from item collection does not work**

**Problem definition**

When excluding elements from an item collection with parent item collections, it does not work.

**Solution definition**

The Exclude and Move options now behave as expected.

- **CR\_21880 S Columns disappear when saving a view**

**Problem definition**

The columns of a view disappear when saving it. When retrieving it again, the view displays no columns

**Solution definition**

Saving a view will no longer discard the existing columns

- **CR\_21890 Last element in specification is not accessible**

**Problem definition**

The last element in the specification is not accessible and cannot be reached.

**Solution definition**

The height of the specification has been fixed to be able to display the last element in the specification

- **CR\_21360 365 Views Management - Sort by options**

**Problem definition**

It should not be possible to use the sorting number as an option in the Sort by - view setting.

**Solution definition**

The sorting number is not available as an option in the Sort by - view setting.

- **CR\_21510 89 Mouse selection impossible in dropdown listbox and then anywhere else**

**Problem definition**

The mouse seems to be unable to select items in a dropdown list box, when the list box was activated using the keyboard. At the same time mouse cannot be used to select anything else in Visure. The selection has to be finished by keyboard before the mouse can be used again.

**Solution definition**

Mouse control has been fixed on the above scenario.

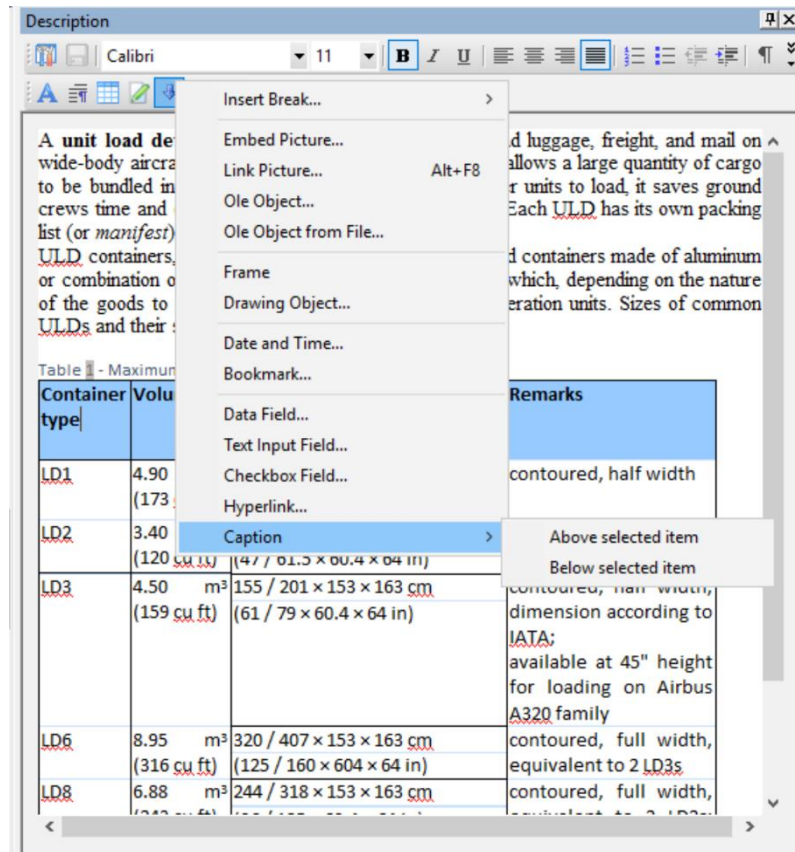
**1.11 Visure Requirements 4.9.0****1.11.1 New features*****1.1.1.18 Advanced export to MS Word***

The existing export to MS Word feature has been completely redesigned to allow users export document views in a highly customized way. The new export to MS Word feature allows users to select whether to automatically generate tables of contents, tables of tables and tables of images. It also supports the definition of different types, and the formatting of these types in the MS Word file.

***1.1.1.19 Captions for tables and images in description***

The description panel includes a new option inside the Insert menu that allows users to insert a caption above or below an image or a table in the description of an item. This allows automatically generate a table of tables, or a table of figures when exporting to MS Word.

The numbering of the table or the figure will display the numbering within the item's description, until they are exported to MS Word, in which case, the automatic numbering will be updated with the corresponding number within the document.



#### 1.1.1.20 Code Prefix for items

Item Collections now have a new system attribute called Prefix. When creating a new item inside an item collection that contains a text in that system attribute, Visure will append the code of the new item to that text, creating a predefined prefix for those item types. For instance, Product Requirements can take a "PR\_" prefix, and system requirements "SR\_".

#### 1.1.1.21 Copy/Paste of items

The copy/paste of items is now a more intuitive function that allows to create new items starting from a set of already existing ones in a very simple way, either within the same project, or across projects.

In order to copy a set of items, the user should select the source items, select the Copy option (or Ctrl+C), select a target item and the Paste option (or Ctrl+V).

When pasting the items the following information of the original set is duplicated in the newly created items:

- Name and Description.
- Hierarchy links.
- Associated files.
- Values of attributes (as allowed by item collection assignment).



- Assignment to item collections for which the “Auto-Assign” attribute is set to either “Assign from source”, or “Assign from target & source”.
- The following information is acquired from the target item:
- Position: items are pasted next to the target item.
- Access partition: items are assigned to the access partition of the target item.
- Assignment to item collections the target item is associated to: this will happen for the item collections that have the “Auto-Assign” attribute set to either “Assign from target” or “Assign from target & source”.
- If destination is a document view, and the selected target item is below an item collection, pasted items will also be assigned to this item collection.

## Notes:

- If there is an active item collection when pasting the items, pasted items will be assigned to the active item collection.
- The item information to paste (attributes, hierarchy, etc.) is the current one when the user selects the Paste option. It could have been updated since the Copy option was selected.
- Items can be pasted in the same project of the original set or in another project in the same Visure database; in this case, the user needs to log into the new project with the same credentials (login name and user role) than he/she used in the source project.
- Links with other items are NOT copied (except hierarchical links).

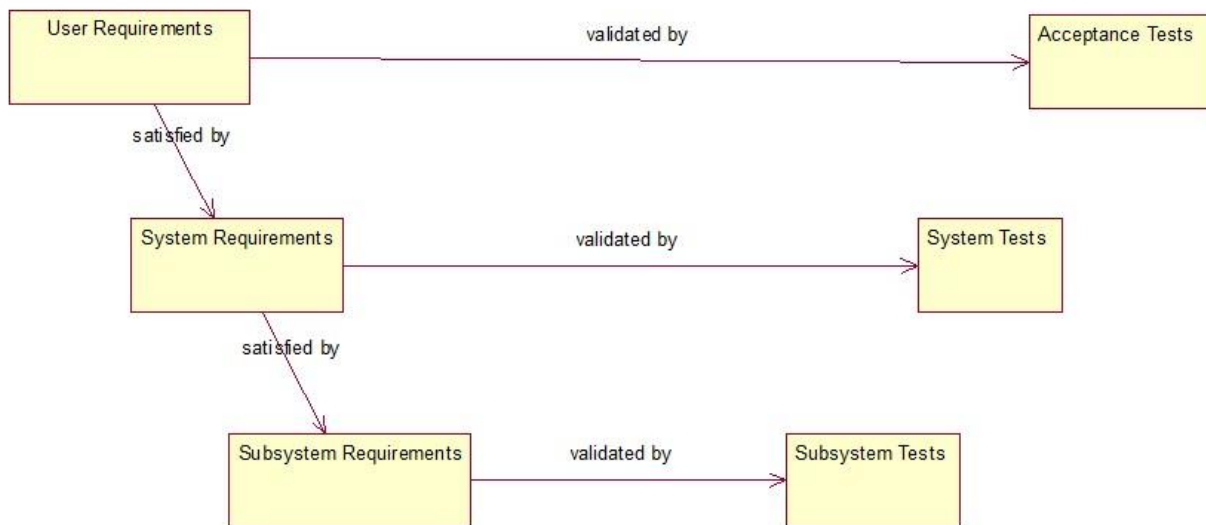
### 1.1.1.22 Advanced traceability restrictions

Links between items can be limited according to the linking rules defined in data models. Visure Requirements extends this functionality, providing a previously available “Basics Links Restriction” mechanism, and introducing a new one, “Advanced Links Restriction”, which allows a tighter control on which links are permitted. Considering that each item in Visure Requirements can be associated with one or more item collections:

- Basic Links Restriction: it will be possible to create a link between items if there is at least one link relating an item collection associated to the source item, and an item collection associated to the target item. The link between item collections shall exist in ANY data model selected for link restriction.
- Advanced Links Restriction: it will only be possible to create a link between two items if the item collections associated to each item meet ALL restrictions explicitly drawn in the data models selected for link restriction.

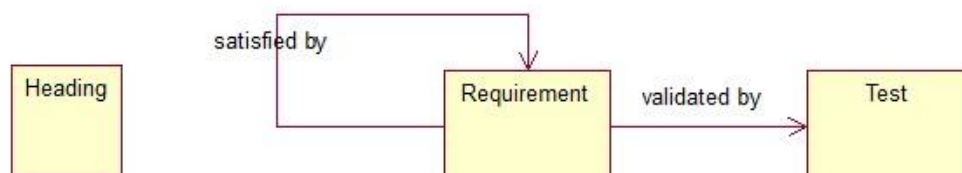
Let us see some examples of both types of traceability restriction:

- Basic link restriction: It is appropriate if only one classification criterion determines the links between items. For instance, we have a data model like this:



If we apply the basic link restriction selecting this data model, for instance all items belonging to User Requirements can be linked to:

- Any item belonging to System Requirements by the *satisfied by* link type.
  - Any item belonging to Acceptance Test by the *validated by* link type.
- Advanced link restriction: It should be used if we need more than one classification criterion in order to restrict the links between items. For instance we have, additionally to the previous data model, this one:

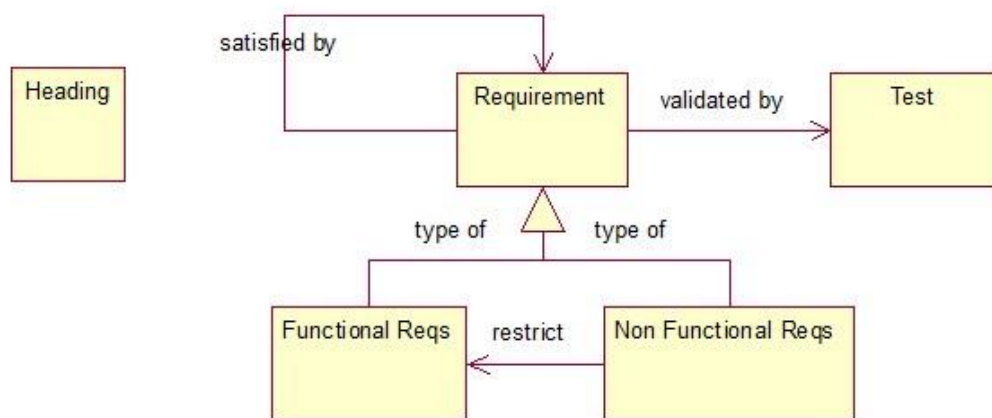


This means that the types of items we are going to manage are headings, requirements and tests. Headings are just text (titles, comments, etc.) and should not be traced to any other item.

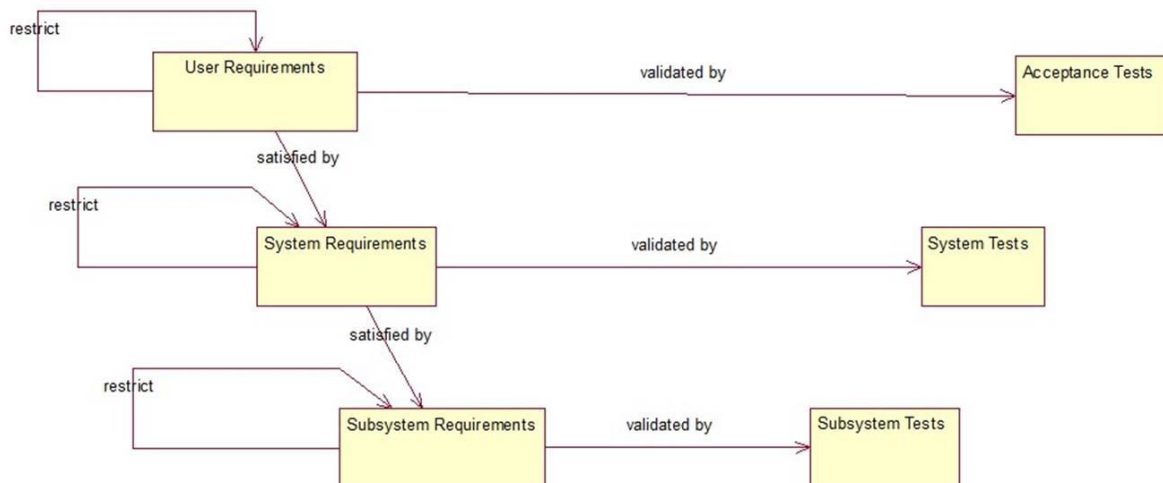
Combined with the previous data model, we mean that inside each of the item collections of requirements or tests (User Requirements, System Tests, etc.) we will have headings and proper requirements or tests. But we want to trace only these ones, not the headings.

So, in this case we should apply the Advanced Links Restriction option selecting both data models to restrict the links. The addition of both models will have the effect that a heading can never be traced to any other item even if it also belongs to an item collection in the first data model (like User Requirements, System Tests, etc.).

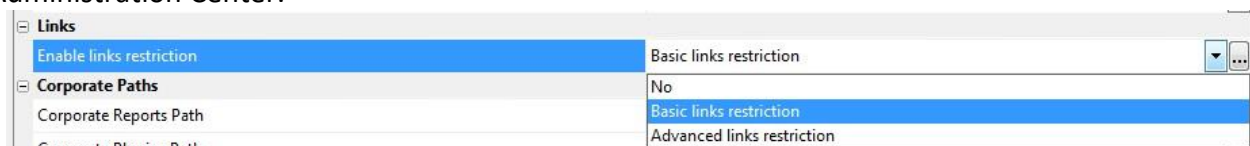
If we have subtypes of requirements, functional and non-functional, for all requirement levels (User, System and Subsystem requirements) with a *restrict* link type, the data model will look like this:



The first data model then has to be modified if we want to be able to create restrict links between requirements in the three levels:



If we want to apply the restrict link only for System Requirements, we should just eliminate the restrict link in this data model for the User Requirements and Subsystem Requirements. For both types of link restriction, in case more than one option for a link between two items is allowed (several link types and/or incoming or outgoing directions), the user will be able to select the link type and/or the direction for the link. To activate link restrictions, one of the options *Basic links restriction* or *advanced links restriction* has to be selected in the Links drop-down menu on the Settings tab of the relevant project in the Administration Center.



#### 1.1.1.23 Adding users for baseline signature

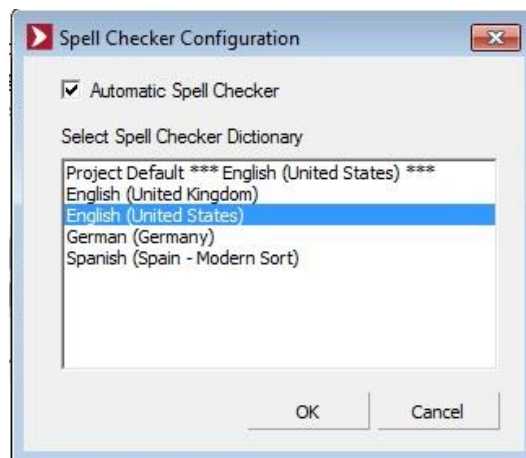
A new *Add User* button is available in the Electronic Signature tab so that administrators can assign users to sign a baseline even after the baseline creation process is finished.



#### 1.1.1.24 Spell checker

A new spell checker function is now available in the Description panel of elements. The default language to be used can be selected by an administrator as one of the project settings in the Administration Center.

Nevertheless, the following dialog is available for all users in the Tools menu in the Description panel:



Users can enable or disable the automatic spell checker function and select the language. When a word is enhanced as not recognized by the spell checker, a context menu is available where several correct options are proposed or the word can be added to the dictionary.

#### 1.1.1.25 Default project templates

A new *Templates* option is available for selection of templates in the project creation process. This step of the creation process displays a list of available project templates (ipt files) in the installation folder, inside a "Project Templates" folder. These templates feature support to different standards in multiple segments including Aerospace and Defense (DO-178B/C & DO-254), Automotive (ISO 26262), Medical Devices (IEC 62304 & FMEA), Railroad (CENELEC EN 50128 & FMEA) and Agile.

This list can be extended with customer specific templates, supporting their own organizational needs.

They can be used as a starting point to create templates tailored to the organization needs.

#### 1.11.2 Enhancements and Usability Improvements

##### 1.1.1.26 Support to Windows 10

Visure Requirements is now fully compatible with Microsoft Windows 10 (32 and 64-bit) Operating System.

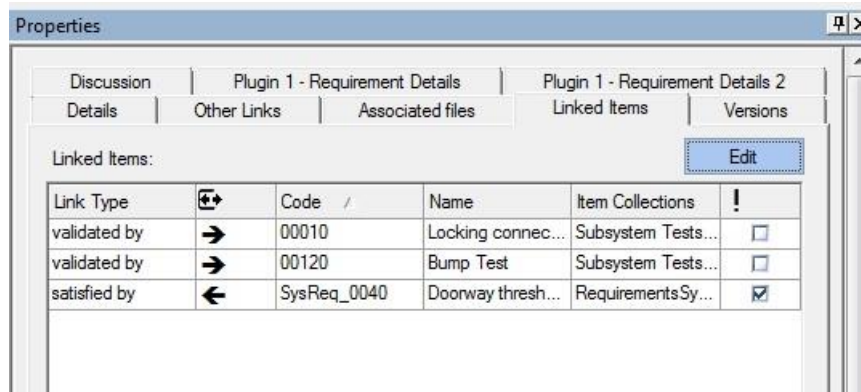
## 1.1.1.27 Document View formatting

The document view has been improved to provide a smoother user experience.

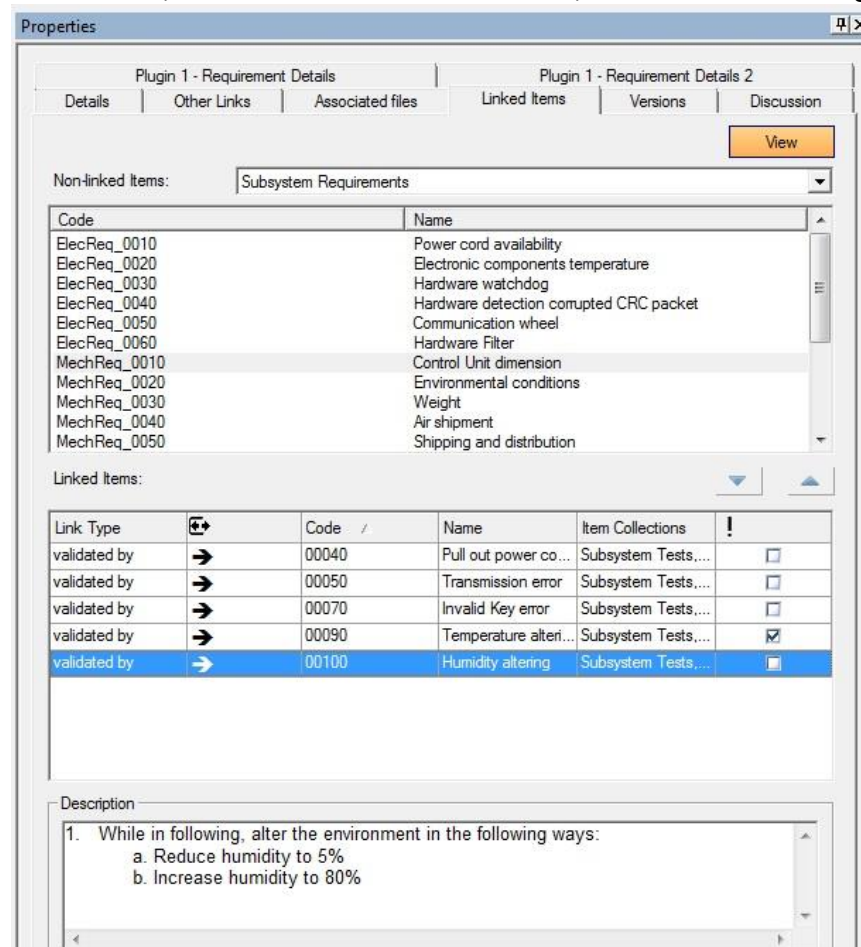
## 1.1.1.28 New design of Linked Items tab

In order to improve performance and usability of the Linked Items tab, two modes are now available when displaying the tab: View and Edit.

The default mode is View; the tab only displays the existing links with other items for the item selected in the grid.



When toggling to Edit mode, the tab allows for link creation, edition and removing.



The top box shows the items that belong to the item collection selected in the drop-down menu above the box and that are not linked to the item selected in the grid.

Link type and direction can be modified for already created links.

All menus in the tab (item collection, link type and direction drop-down menus) take into account the link restrictions set for the project and only display available options according to these restrictions.

#### *1.1.1.29 Sorting Number for item collection*

The Sorting Number starts the numbering at the first item, instead of the item collection, providing a closer representation of a MS Word specification numbering.

#### *1.1.1.30 Removing sorting criteria*

A new option has been added to the context menu when right-clicking on the column header to facilitate users the possibility to remove all sorting criteria.

#### *1.1.1.31 Number of digits and alignment for floating attributes*

Visure Requirements allows the possibility to configure the number of decimal digits for floating attribute types as well as the alignment. In order to configure these options, simply right click on column header of the desired attribute, and select the option.

#### *1.1.1.32 New heading number in item views*

A new attribute called *Heading Number* is now available in item views. It is an attribute of items linked to their position in the item hierarchy; it follows the pattern  $n[n]$ , where the  $[n]$  is repeated for each level in the item hierarchy starting from level 2.

An attribute *Show Heading Number* for item collections is now also available. The heading number is only visible for those items that belong to item collections with a check in the *Show Heading Number* attribute.

These properties of items and item collections are intended for building item views simulating the numbering we find in documents. We can define item collections to categorize the items according to the type of element they represent in a specification (titles, free text, requirements, test cases, etc.) and assign to them the Show Heading Number property so that only titles display the associated number. This way it is possible to build a document view like this:

Heading Number	Name
	<b>Requirement Specification</b>
	<i>User Requirements</i>
1	Introduction
	Introductory text
2	Requirements
	User Requirement 1
	User Requirement 2
	<i>System Requirements</i>
1	Introduction
	Introductory text to System Requirements chapter
2	Requirements
2.1	Functional Requirements
	System Requirement 1
	System Requirement 2
	System Requirement 3
2.2	Non-Functional Requirements
2.2.1	Usability Requirements
	System Requirement 4
	System Requirement 5
2.2.2	Performance Requirements
	System Requirement 6
	System Requirement 7

#### 1.1.1.33 Sorting of attributes in Details tab

User attributes can now be displayed in the item Details tab in a customized sorting, not only alphabetically. Users allowed to modify attributes can manually arrange the list of attributes in the attribute view through drag & drop; this sorting can be set by each user in the Details tab using the context menu in the heading of the User Attributes section inside the tab. This menu has two options: Custom Order and Alphabetical Order. The option set by the user applies to all projects. In order to set up this feature, the user can simply right click on the "User Attribute" row category, and select the desired sorting.

#### 1.1.1.34 New data available in Visure Report Manager

Suspect attribute for links and text-format description for items are now available as properties to be displayed in reports (properties "IsRelationshipSuspect" and "DescriptionTXT").

#### 1.1.1.35 Performance improvement in SQL Server Visure databases

When creating an SQL Server Visure database, the user is now able to select separate file groups for data and for indexes (same as the option already available in Oracle to use separate tablespaces). This way, performance in the use of SQL Server for Visure databases will be much improved.



## 1.1.1.36 New data available for export to HP ALM

Requirements "Fit-criteria" is now available to be mapped with a text attribute and exported to HP ALM. Likewise, "Author" and "Version Author" can also be mapped with any HP ALM text attribute and exported from Visure Requirements to HP ALM.

## 1.1.1.37 Code and Name removing in item views

Item Code and Name are not mandatory columns anymore. They can be removed from views, just like any other attribute in the grid.

## 1.1.1.38 Color filters saved as view settings

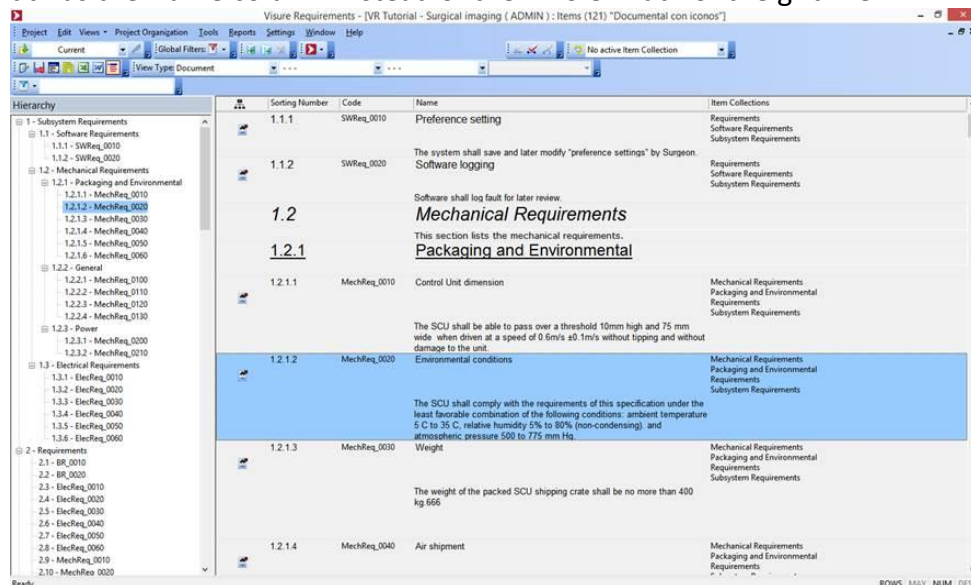
Active filters in Color mode (the elements that fit the filter expression are highlighted in red) are now saved as part of the settings in view configuration, same as the ones in Filter mode (only the elements that fit the filter expression are displayed).

## 1.1.1.39 Access to OLE objects in checked-in items

Opening OLE objects from the description panel by double-clicking is now available also for checked-in items. It is important to note that the objective of this new feature is that users are able to read the documents linked as OLE objects even if the item is checked-in, but not to modify them. That is, since the item is checked-in, any changes made in the open document will not be stored in the database.

## 1.1.1.40 Inline RTF description enabling

Now the inline RTF description field is enabled in all view types, not only in the document view. Furthermore, a new option "Fit inline description to Name column width" is available in view configuration. If it is checked, the RTF description will appear right below the Name and occupying the same width as the Name column instead of the whole width of the grid view.





#### 1.1.1.41 New default and predetermined views

The menu option to access to the default view of any Visure Requirements element is now called *Show all*. This view displays the list of elements with Code and Name columns and with the Description and Properties panels docked and minimized.

The predetermined view for items is now a document view called *Specifications* displaying the columns Item Types, Check-in/out status, Sorting Number, Code and Name. The Description and Properties panels are docked to the right side of the screen and minimized.

#### 1.1.1.42 New default options in Traceability Tree views

In traceability tree views, the default options in drop-down menus are now the most commonly used:

- Select Link Type menu: *All*
- 2<sup>nd</sup> Level menu: *Filter first level*

#### 1.1.1.43 New default options in Project Settings

Some project settings default options have been redefined in order to ensure they are the most commonly used:

- Enable Links Restriction: Enabled

Every new data model is enabled automatically. The administrator needs to uncheck it explicitly in case it is not intended to restrict links.

- Allow empty names: Enabled
- Enable changing of attribute values with Write (own) permissions: Enabled
- Project description configuration: Enabled
  - Check description margins: Enabled
  - Check supported image formats: Enabled
  - Format: The one configured in the Windows system for all applications.
- Automatic hierarchy when creating elements: Yes
- Fit columns size to window size: No

#### 1.1.1.44 Default background color for selected items

The default background color for selected items in the grid is now the one defined by RGB: 151-203-255. This default option only applies if the user has not selected another one in the Color Configuration menu.

## 1.1.1.45 User filtering in baseline creation

When creating a new baseline, users can be selected for baseline signature; now the list of available users only displays the ones assigned to the project in which the baseline is being created.

## 1.1.1.46 User sorting in User Group Members tab

In the Administration Center, when selecting a user group in a project, sorting is now enabled in the Members tab by clicking on any column heading. By default, first click over a column sorts values in ascending order.

## 1.11.3 Solved Issues

### 1.1.1.47 Visure Requirements Client (13)

- **CR\_IC\_16066 - CA-2012-03-00004616 – Filter formula messed up**

#### **Problem definition**

After adding a new value to an enumerated attribute type, if this type was used in a term of a compound filter, the position of this term in the filter is now the last one, so the compound filter is modified and becomes a different one from the intended filter.

#### **Solution definition**

Now the position of terms in compound filters is kept in all cases, even when an enumerated attribute type is modified in any way.

- **CR\_IC\_17920 - CA-2015-07-00006155 - Display issue for multivalued attributes**

#### **Problem definition**

In the Properties tab, multivalued user defined attributes with many values assigned to an item are not correctly displayed; only the first 15 values are shown in the tab.

#### **Solution definition**

Now in the Properties tab, when an item has a multivalued attribute with more than 15 values, only the first 15 values are shown followed by '...' meaning that there are more values assigned to the item. The full list of values will be displayed in the tooltip.

- **CR\_IC\_17925 - CA-2015-08-00006162 - Hyperlink malfunction with Windows Domain users**

#### **Problem definition**

When Windows Domain is set as default validation system and Current Windows User is checked for the login process, if a hyperlink is generated it cannot be used later because the login window, including the OK button, appears greyed out, so the user is not able to open the project.

#### **Solution definition**

When the hyperlink is activated, if Windows Domain is set as default validation system and Current Windows User is checked, the username appears in the login window and the OK button is available to the user.

- **CR\_IC\_17941 - CA-2015-09-00006180 – Problem in displaying TIFF-format pictures**

## **Problem definition**

When inserting TIFF pictures in the description of an item, the picture cannot be seen correctly in the panel.

## **Solution definition**

Now TIFF-format pictures are properly displayed in the description panel.

- **CR\_IC\_17973 - CA-2015-11-00006214 - Issue in visualization of new item**

## **Problem definition**

When adding items in a hierarchical view using Item Template plugin the view jumps away so that the new item appears at the bottom of the page.

## **Solution definition**

The new item appears below the previously selected one and now the view does not move or scroll. The bug has been fixed when adding items in a hierarchical view from *Add item* and *Add child item* buttons, and from the Item Template plugin.

- **CR\_IC\_17974 - CA-2015-11-00006214 - Issue in visualization of new items with applied filter**

## **Problem definition**

When adding a set of new items in a hierarchical view one after another, only the latest one is visible, the previously created ones disappear; when refreshing the view (with F5, for instance) all new items are visible. This issue happens when a filter is applied (like activating an item collection, for instance).

## **Solution definition**

Now, when adding a set of items in a hierarchical view one after another, all new items are always visible. The bug has been fixed when creating new items from *Add item* and *Add child item* buttons, and from the Item Template plugin.

- **CR\_IC\_17975 - CA-2015-11-00006214 - Issues in visualization after deleting items**

## **Problem definition**

In hierarchy views, after deleting items inside a hierarchical level, the selected item is the first one in the view. Also, after deleting a parent item, the child items are not displayed in the grid until the view is refreshed.

## **Solution definition**

Now, after deleting items inside a hierarchical level, the selected one is the next or the previous item to the deleted ones, in the same hierarchy level. And, after deleting a parent item, the child items are visible right afterwards.

- **CR\_IC\_17976 - CA-2015-11-00006214 - Issue in visualization of relocated item in hierarchical view**

## **Problem definition**

In a hierarchical view, after dragging and dropping an item in a new position in the hierarchy, the view refreshes and the relocated item always appears at the bottom of the screen.

## Solution definition

The bug has been fixed for refresh and drag & drop operations. Now the selected item remains in the same position in the windows; it does not jump away to the bottom of the screen.

- **CR\_IC\_18031 - CA-2016-02-0006290 - Error in English text when assigning item collection**

## Problem definition

In the Properties panel, when modifying the assignment of item to item collections, the dialog shows some tags in Spanish in the English version of the tool.

## Solution definition

The text is now correctly translated into English.

- **CR\_IC\_18046 - Blank space in items with empty Name field**

## Problem definition

In the document view, items which do not have any content in the "Name" field are displayed with a blank space which depends on the height of the font selected for the name. This causes large gaps of empty spaces for most items.

## Solution definition

Now in the document view, if the name of an item is empty, the style height for the name is not applied when the item is checked-in. The height is set to the highest cell being displayed (sorting number, columns with attributes, etc.) so some blank space is still visible but in most cases the gap is a small one and readability is much improved.

- **CR\_IC\_18078 - Issue in migration of item descriptions**

## Problem definition

When migrating repositories, if there is an error in the conversion of an RTF description to HTML, the description is not migrated in any format.

## Solution definition

Now when an error is detected in the migration process related to the conversion of an RTF description to HTML, this description is migrated only in RTF and text formats.

- **CR\_IC\_18080 - CA-2016-04-0006331 - Poor performance when opening project**

## Problem definition

Opening a project is a very slow process in some environments.

## Solution definition

Performance improvements have been implemented in the data loading when opening a project.

- **CR\_IC\_18088 - Error in user validation when signing baselines**

## Problem definition

When using Windows authentication, users cannot sign a baseline with their Windows password (an error message is shown). However, they are allowed to sign the baseline if the password field is left blank.

## Solution definition

Now users have to input the correct password in order to sign a baseline for all user validation systems.

**CR\_IC\_20060                      235                      Inconsistent selection of elements**

## Problem definition

The hierarchy panel does not synchronize the selection with the grid panel when selecting elements.

## Solution definition

Now the selection of elements in the hierarchy panel is synchronized with the grid panel

**CR\_IC\_20100                      220                      Excel export error**

## Problem definition

When exporting a filtered hierarchical view to Excel some of the columns contents were shifted.

## Solution definition

Now export to Excel works correctly even in filtered hierarchical views

**CR\_IC\_20890                      301                      Change Parent**

## Problem definition

When drag and drop elements in a sorted view it was not possible to change the parent of an item.

## Solution definition

Now elements can be moved and the change can be changed by drag and drop elements in sorted by views. In case of selecting “move at the same level” of an orphan item, the moved item will also become orphan, even if there is a sorting criterion.

**CR\_IC\_21280                      317                      Access partition on details tab**

## Problem definition

When login with user with restricted rights over the partition were items are located, the access partiion field on the details tab is empty.

## Solution definition

Now the access partition is correctly displayed even if the user has no rights over it.

**CR\_IC\_21340                      237                      Format of float**

## Problem definition

The format of float attributes was not configurable, i.e. number of decimals

**Solution definition**

Now it is possible to configure the format of float attributes

*1.1.1.48 Visure Requirements API (1)*

- CR\_IC\_17900 - CA-2015-07-00006144 - VR-FACE Change Comment/Description

**Problem definition**

The Change description field cannot be accessed through the API; the field is always empty.

**Solution definition**

From now on, the IVersionable "strChangeDescription" property contains the correct value of Change description data.

## 2 Questions? Next steps?

We hope you found this tutorial useful, but we understand that you may have many more questions.

Please feel free to contact us at [helpdesk@visuresolutions.com](mailto:helpdesk@visuresolutions.com) for technical questions, or [info@visuresolutions.com](mailto:info@visuresolutions.com) for pricing or licensing information.