

# RS Series

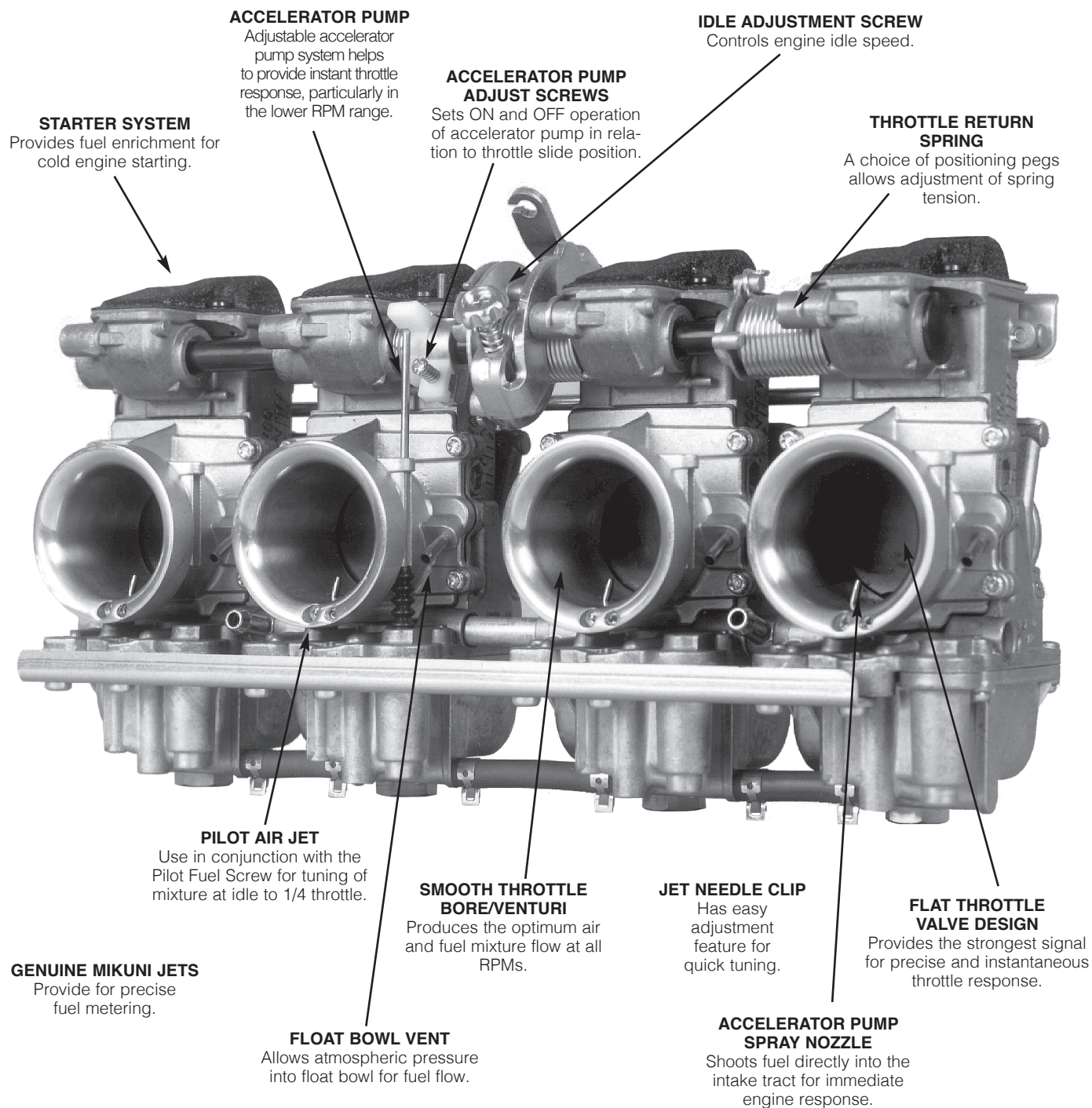
## Fox Distributing INC

If we don't have it it's not in the country.

Fox Distributing INC  
PO Box 1126 / 3N 650N 17th St.  
St. Charles, IL 60174  
(630) 513-9700  
Proud distributor of Mikuni since 1987.



# RS Series Carbs



The Mikuni RS Series Carburetors were designed and built in response to the needs of the world's top motorcycle road race and drag race teams. They required carburetors which could satisfy the precise fuel metering demands and high flow volume required by highly modified race engines. And yet, also provide the smooth, controllable throttle response that is needed by any rider pushing his motorcycle to its limits on the race track and under any high performance applications. The carburetors need to meter fuel correctly under a wide range of atmospheric conditions and engine tuning modifications while being easily accessible for trackside

tuning changes which need to be made quickly.

Designed for in-line four cylinder performance motorcycle applications, the Mikuni RS Series Radial Flat Slide Carburetors offer superior horsepower gains with their maximum flowing smoothbore induction tract and radial flat slide design. An adjustable accelerator pump system helps to provide instant throttle response, particularly in the lower RPM range. The RS Series Carburetors feature a compact design which is 25% lighter than other performance carburetors and uses readily available Mikuni jets. Available in 34, 36, 38, and 40mm sizes.

## RS SIZE / FITMENT & STANDARD TUNING SPECIFICATIONS

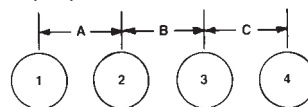
MIKUNI KIT NUMBER	APPLICATION *(GENERAL)	CARB SPACING (Throttle Shaft No.) A-B-C	SPIGOT (O.D.) MM	MAIN JET (N100.604)	*JET NEEDLE (J8-) (CLIP POS.)	NEEDLE JET #568 (784-13002)	PILOT JET (VM28/486)	PILOT SCREW (TURNS)
RS34-D21-K	GSX-600 '88 GSX-R 750 to 1990 SUZ GS 750 ALL KAW KZ 750	77-93-77 (700-17011)	40	115	9DZH1 (-3)	P-4	17.5	1/4-1/2
RS36-D3-K	GSX-R 750 to 1990 GSX-R1100 to 1990 GS 1000-1150 KZ 1000-1100	77-93-77 (700-17011)	42	120 120 130 130	9DZH1 (-3)	P-4	17.5	1/4-1/2
RS38-D19-K	GSX-R 750 to 1990 GSX-R1100, GS 1000-1150 KZ 1000-1100	77-93-77 (700-17011)	42	135 135 135	9CHY3 (-2)	Y-6	17.5	1/4-1/2
RS40-D1-K	GSX-R '90, GS, KZ RACE	77-93-77 (700-17011)	44	140	9CHY3 (-3)	Y-6	17.5	1/4-1/2

KIT PREFIX NUMBER DENOTES CARB VENTURI SIZE IN MILLIMETERS.  
EG: RS36 = 36MM BORE.

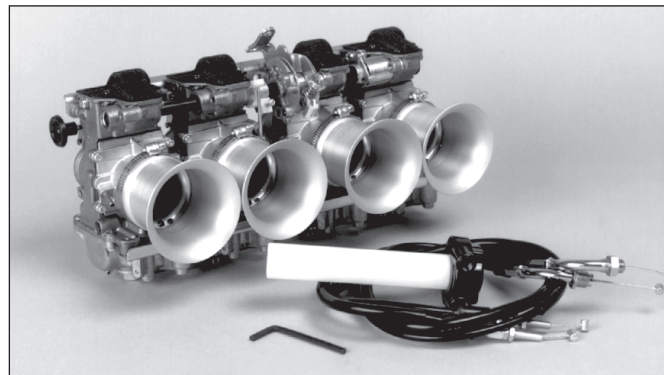
\*NOTE: THESE ARE GUIDELINES ONLY, OTHER APPLICATIONS MAY BE AVAILABLE CONTACT YOUR MIKUNI DISTRIBUTOR SPECIFICATIONS ARE SUBJECT TO CHANGE.

\*NOTE: RS34/36  
MAY USE 9DZH05  
RS38/40 MAY USE  
9CHY10

CARBURETOR SPACING:  
(mm)



PARTS STAMPING  
This marking is your quality assurance guarantee.  
DO NOT ACCEPT SUBSTITUTES.



### MIKUNI PUSH/PULL THROTTLE ASSEMBLY

A Push/Pull Throttle Assembly is required with the use of all Mikuni Racing Carburetors to assure the positive closing of the carburetor throttle slides against the high vacuum pressures encountered in racing engines. The Mikuni Push/Pull Throttle Assembly includes a twist throttle assembly and both throttle cables with adjusters.

Push/Pull Throttle Assy.

Part No. KRS-001

### MIKUNI VELOCITY STACKS

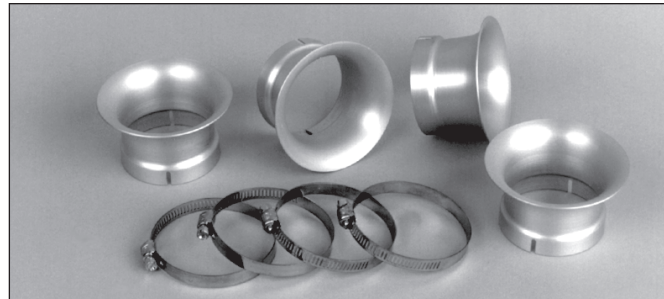
Velocity stacks improve the air flow into the carburetors to increase induction efficiency and increase horsepower on racing engines where air filters are not required. Set of 4 Velocity Stacks fits all Mikuni RS Series Carburetors and other carburetors with 55mm O.D. intake bells. Choose length depending on chassis clearance and desired tuning characteristics.

30mm Mikuni Velocity Stacks, Part No. KRS-002

50mm Mikuni Velocity Stacks, Part No. KRS-003

70mm Mikuni Velocity Stacks, Part No. KRS-004

15mm Mikuni Velocity Stacks, Part No. KRS-007



**IMPORTANT:** Mikuni RS Series Carburetors are legal in California ONLY FOR RACING VEHICLES WHICH MAY NEVER BE USED UPON A PUBLIC STREET OR HIGHWAY. In other locations check for similar laws which may apply.

### MIKUNI RS METHANOL KIT

All the jetting components necessary to allow the use of methanol fuel with RS38 and RS40mm carburetors.

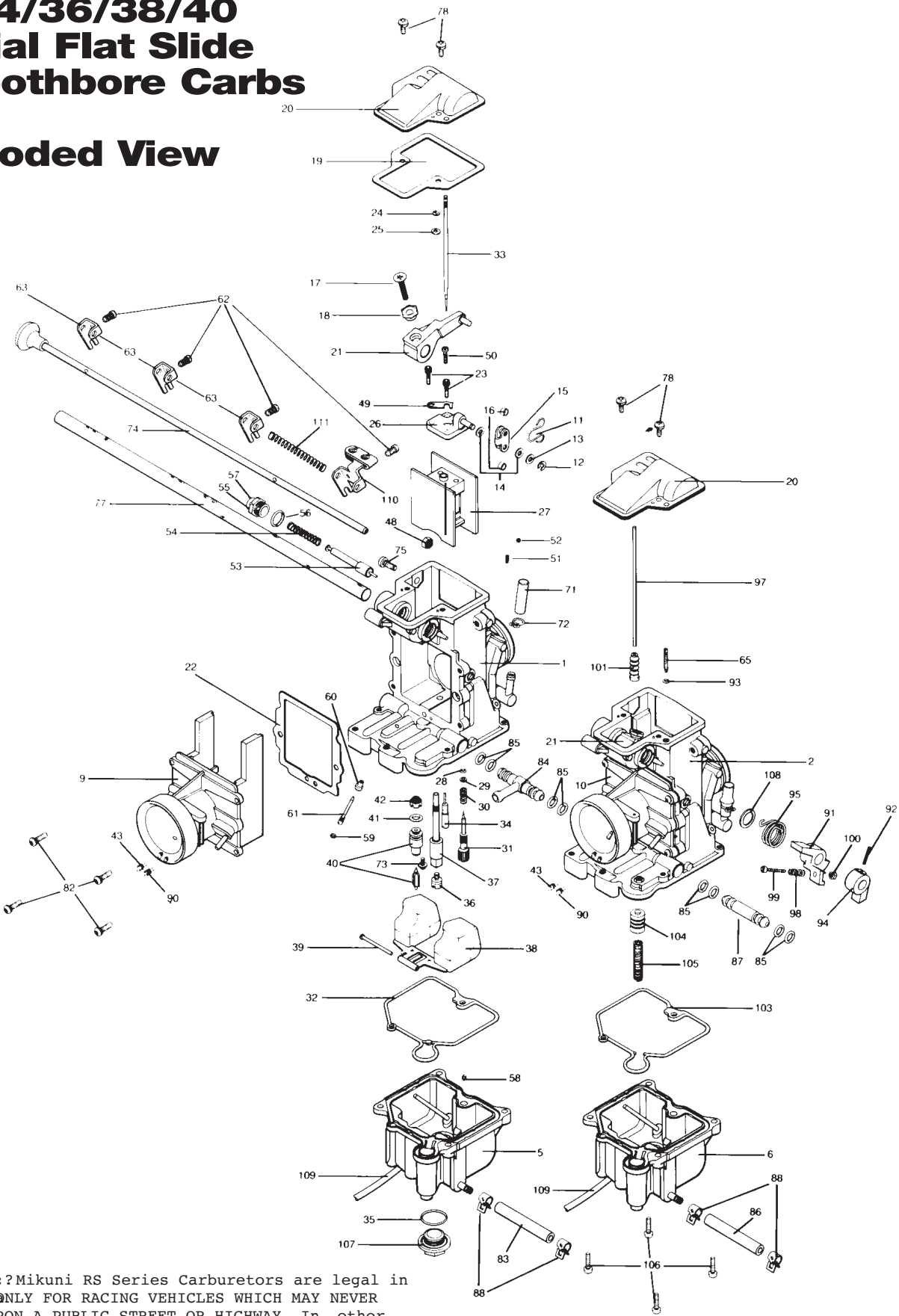
Mikuni RS Methanol Kit

Part No. KRS-005



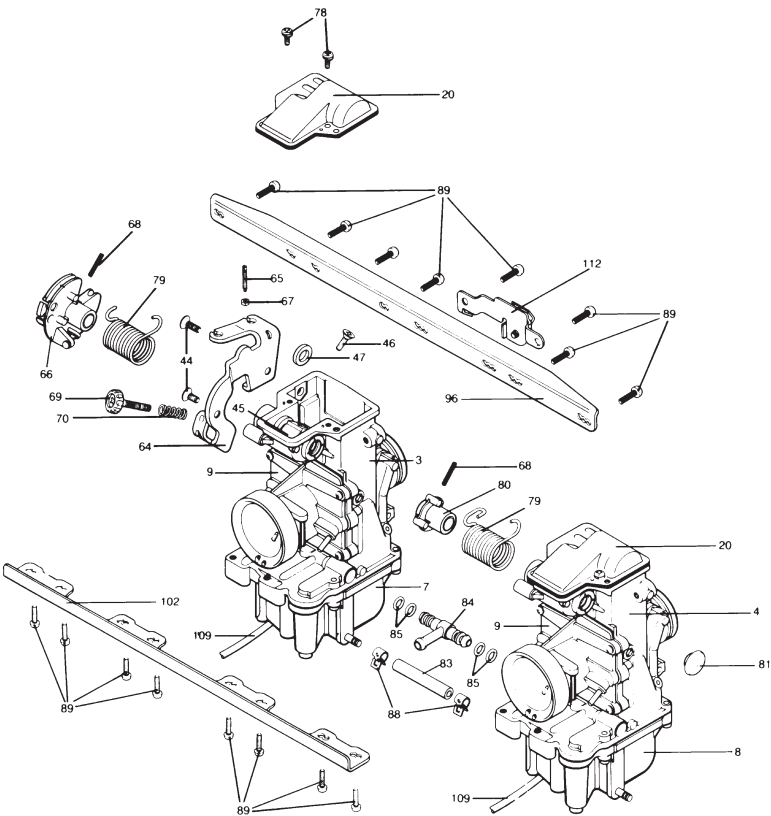
RS34/36/38/40  
Radial Flat Slide  
Smoothbore Carbs

Exploded View



IMPORTANT: Mikuni RS Series Carburetors are legal in California ONLY FOR RACING VEHICLES WHICH MAY NEVER BE USED UPON A PUBLIC STREET OR HIGHWAY. In other

No.	Description	Part Number
1	MIXING BODY	TM36SS54
2	MIXING BODY	TM36SS55
3	MIXING BODY	TM36SS56
4	MIXING BODY	TM36SS57
5	FLOAT CHAMBER BODY	TM36/69
6	FLOAT CHAMBER BODY	TM36/74
7	FLOAT CHAMBER BODY	TM36/73
8	FLOAT CHAMBER BODY	TM36/75
9	AIR FUNNEL BODY	TM36/27a
10	AIR FUNNEL BODY	TM36/28a
11	CLIP, T.V. LEVER	TM27/05A
12	E-RING, T.V. LEVER	BSW28/70
13	WASHER, T.V. LEVER	M10/56
14	PACKING, T.V. LEVER	B401/10
15	PLATE, T.V. LEVER	TM27/04
16	RING, T.V. LEVER	TM29/65
17	SCREW, SYNCH. LOCK	C5 = 0518
18	RING, SYNCH. ADJUST	TM36/06
19	GASKET, TOP COVER	TM36/39
20	TOP COVER, CARB.	TM36/69
21	LEVER ASSY, T.V. #1-2-4	TM36/64
22	GASKET, A/FUNNEL	TM36/42
23	SCREW, 2.5 mm ALLEN	739-13001
24A	E-RING, RS34-36 NDLE	VM20/369
24B	E-RING, RS38-40 NDLE	BS32/126
25A	WASHER, NDLE CLIP 34-36	VM26/315
25B	WASHER, NDLE CLIP 38-40	826-03002
26	CONNECTOR PLATE, T.V.	TM36/64
27A	VALVE, THROTTLE 34-36	CALL YOUR
27B	VALVE, THROTTLE 38-40	DISTRIBUTOR
28	O-RING, FUEL SCREW	N133.037
29	WASHER, FUEL SCREW	VM12/33
30	SPRING, FUEL SCREW	N133.206
31	SCREW, PILOT FUEL	604-26003
32	O-RING, F.C.B. #1-3-4	616-94020
33A	JET NEEDLE RS36 BEFORE 12/87	J8-9CHY01
33B	JET NEEDLE RS34, 36	J8-9DZH01 or 9DZH05
33C	JET NEEDLE RS38, 40	J8-9CHY03 or 9CHY10
34	PILOT JET	VM28/486-17.5



PART NUMBER (000-000) = NO AVAILABLE STOCK

No.	Description	Part Number
35	O-RING, DRAIN PLUG	VM28/254
36	MAIN JET	N100.-604
37	NEEDLE JET-568	784-13002-P-4
38	FLOAT ASSY	869-32044
39	PIN, FLOAT	VM30/160
40	NEEDLE VALVE ASSY	N149.040-2.8
41	O-RING, NEEDLE VALVE	KV/10
42	FILTER, NEEDLE VALVE	VM18/233
43	MAIN AIR JET (PLUGGED)	BS30/97
44	SCREW, CRANK BRACKET	C8 = 0512
45	LEVER ASSY, T.V. #3 CARB	TM36/57
46	SCREW LEVER	CS = 0514
47	PACKING, SHAFT	VM28/174
48	HEXAGON, LOCK NUT	VM18/267
49	PLATE, NEEDLE RETAINER	TM36/42
50	SCREW, T.V. PLATE	C2-0340
51	SPRING, STARTER SHAFT	B21/29
52	BALL, STARTER SHAFT	B21/28
53	PLUNGER, STARTER	N151.038
54	SPRING, STARTER	VM16/42
55	GUIDE HOLDER, STARTER	640-12002
56	O-RING, STARTER	N138.198
57	CAP, STARTER	N406.244
58	STARTER JET	VM17/1002
59	O-RING, A/P NOZZLE	N124.063
60	PLUG, A/P NOZZLE	TM29/14
61	PUMP NOZZLE	TM36/43
62	SCREW, START BRACKET	N158.052
63	LEVER, STARTER SHAFT	N478.656
64	BRACKET, BELL CRANK	TM36/37d
65	ADJUST SCREW, A/P	TM36/48A
66	LEVER ASSY, BELL CRANK	TM36/31
67	HEXAGON NUT, A/P	N2-03-B
68	PIN, THROTTLE BELL CRANK	N138.019
69	ADJUSTER, IDLE	739-55003
70	SPRING, IDLE ADJUSTER	N110.209
71	CAP, VACUUM FITTING	N148.013
72	SPRING CLIP, VAC. FIT	BVK28/128
73	SCREW, NV HOLDER	VM13/216
74	SHAFT ASSY, STARTER	TM36/34a
75	PAN HEAD MACHINE SCREW	C2=0508-B
76	FLAT HEAD MACHINE SCREW	C5 = 0514
77A	SHAFT, THROTTLE B/C #3	700-17011
77B	SHAFT, THROTTLE B/C #1	700-17012
77C	SHAFT, THROTTLE B/C #3	700-17013
78	SCREW, TOP COVER	CW2=0408
79	SPRING, THRTL. RTRN.	TM36/46a
80	LEVER, RTN. SPRING	TM36/33
81	CAP, SHAFT END	TM33/36-A
82	SCREW, AIR FUNNEL	VM38/133B
83	HOSE, FUEL CONNECT	888-44003
84	INLET, FUEL "T"	794-23048
85	O-RING, FUEL JOINT	616-23002
86	HOSE, A/P FUEL	888-4404
87	JOINT, FUEL	792-20014
88	CLIP, FUEL HOSE	E100729-BB
89	SCREW, BRACKET	C2 = 0512-B
90	PILOT AIR JET	BS30/97-0.8
91	LEVER, A/PUMP	TM36/17
92	PIN, A/P LOCATE	BN38/43
93	O-RING, A/P ADJ.	B30/205
94	LEVER, A/PUMP	TM36/18
95	SPRING, A/PUMP	TM36/45
96	PLATE, TOP BRACKET	TM36/35
97	ROD, A/PUMP	TM36/44
98	SPRING, A/P ADJ.	M12F/46A
99	SCREW, A/P ADJ.	MC-0316-B
100	HEXAGON NUT, A/P ADJ.	N3 = 03-B
101	CAP, A/P RUBBER	TM36/64
102	PLATE, LOWER BRACKET	TM36/36
103	O-RING, F.C.B. A/P	616-94021
104A	PLUNGER, A/PUMP 8mm	TM36/60
104B	PLUNGER, A/PUMP 12mm	TM36/60a
105	SPRING, A/P 12mm	VM14SC13/89
106	SCREW, FLOAT BOWL	C2 = 0412-B
107	PLUG, DRAIN	VM33/77
108	RING, A/P SPRING	E204.040
109	HOSE	888-23026
110	LEVER, STARTER CABLE	TM36/63
111	SPRING, STARTER BRACKET	730-06027
112	BRACKET, STARTER CABLE	TM36/61