



2016-17 GEORGIA LADY BULLDOGS GAME NOTES

Tray Littlefield, Assistant Sports Communications Director
 1 Selig Circle, Athens, GA 30602
 O: (706) 542-9342 | C: (205) 504-4566 | E: trayl@sports.uga.edu

@UGA_WBB » @UGA_WBB » Georgia Women's Basketball

#RunAsOne

TODAY'S MATCHUP

STEGEMAN COLISEUM // ATHENS, GA. // 12 P.M. ET

GEORGIA

VANDERBILT



9-6, 1-1 SEC NR	16-17 Record	10-5, 0-2 SEC NR
Joni Taylor	Ranking	
30-16 (2nd yr.)	Head Coach Stephanie White	
30-16 (2nd yr.)	Record at School 10-5 (1st yr.)	
GeorgiaDogs.com	Career Record 10-5 (1st yr.)	
	Website VUCommodores.com	

TV INFORMATION

Network: SEC Network
Play-By-Play: Paul Sunderland
Analyst: Andy Landers

RADIO INFORMATION

Network: Georgia Bulldog Sports Network (IMG)
Play-By-Play: Jeff Dantzler
Athens Affiliate: WRFC-AM 960

INSIDE THE SERIES

Overall: Georgia leads, 35-27
In Athens: Georgia leads, 18-7
In Nashville: Vanderbilt leads, 13-10
Neutral Sites: Tied, 7-7
Current Streak: Georgia has won 3 of the last 4
Last Meeting: Vandy 54, UGA 49 (OT) 3/3/16 at the SEC Tournament in Jacksonville, Fla.

#TWEETABLE

@UGA_WBB's Caliya Robinson became the first Lady Dog since Tasha Humphrey to score 30 or more points in a game with her 30 pt. effort vs. Minnesota.

@UGA_WBB boasts a 6-1 record when leading at the half this season.

@UGA_WBB's three seniors combined to start just 29 games entering the 2016-17 season.

Four of @UGA_WBB's nine eligible players are from the state of Georgia.

OPENING TIP

» Georgia welcomes Vanderbilt for its annual Alumni Reunion Weekend on Sunday at Noon ET on the SEC Network.

» The Lady Bulldogs enter the contest following an impressive 69-59 victory against Texas A&M on Thursday. **The Aggies, who are receiving votes in both the AP and USA Today Coaches polls, represent the second NCAA Tournament team from a year ago that Georgia has beaten (the other being BYU).**

» **Georgia held Texas A&M to its lowest field-goal percentage of the season (35.9%).** The Lady Bulldogs, who led the league in scoring defense, field-goal percentage defense and 3-point field-goal percentage defense last season, have held **10 teams to 40 percent or lower shooting, boasting a 9-1 record in those games.**

» **Junior guard/forward Pachis Roberts leads the Lady Bulldogs in SEC play through two games, averaging 14.5 ppg.** In fact, Roberts has scored a combined 58 points in the last three games this season.

» Georgia has won five-straight SEC home games dating back to last season. **In all, the Lady Bulldogs are 6-3 against SEC foes and 21-5 overall at home under head coach Joni Taylor.**

» **The Lady Bulldogs have won three of the last four meetings between the two programs.** The only loss during that span came during last year's SEC Tournament, with Vandy taking that game 54-49 in overtime.

2016-17 GEORGIA SCHEDULE/RESULTS

OVERALL: 9-6 » SEC: 1-1
HOME: 7-2 » ROAD: 1-3 » NEUTRAL: 1-1

NOVEMBER

Nov. 11	SC State	W, 64-50
Nov. 13	Mercer	W, 72-64
Nov. 16	BYU	W, 81-51
Nov. 20	at Georgia Tech	L, 52-45
Nov. 24	1-Minnesota	W, 70-58
Nov. 26	1-USF	L, 81-65
Nov. 29	Kennesaw State	W, 82-40

DECEMBER

Dec. 3	2-at Oklahoma State	L, 71-51
Dec. 5	Furman	W, 67-62
Dec. 15	at Cincinnati	W, 51-48
Dec. 19	Virginia	L, 66-43
Dec. 22	Samford	L, 65-59
Dec. 28	Western Carolina	W, 78-43

JANUARY

Jan. 1	at Missouri*	L, 63-45
Jan. 5	Texas A&M*	W, 69-59
Jan. 8	Vanderbilt*	Noon
Jan. 12	at South Carolina*	7 p.m.
Jan. 15	at Kentucky*	3 p.m.
Jan. 22	Florida*	1 p.m.
Jan. 26	South Carolina*	7 p.m.
Jan. 29	at Ole Miss*	3 p.m.

FEBRUARY

Feb. 2	at Arkansas*	8 p.m.
Feb. 5	Tennessee*	4 p.m.
Feb. 9	Kentucky*	7 p.m.
Feb. 12	at Auburn*	3 p.m.
Feb. 16	at Mississippi State*	8 p.m.
Feb. 19	LSU*	2 p.m.
Feb. 23	Alabama*	7 p.m.
Feb. 26	at Florida*	Noon

MARCH

Mar. 1-5	SEC Tournament	TBA
----------	----------------	-----

Home games in **BOLD**

* denotes SEC game

1 - Junkanoo Jam (Bimini, Bahamas)

2 - SEC/Big 12 Challenge

All times Eastern and subject to change

GEORGIA'S POSSIBLE STARTERS (BASED ON LAST GAME)

#12 HALEY CLARK JR // G	#24 SIMONE COSTA JR // G	#11 PACHIS ROBERTS SR // G/F	#33 MACKENZIE INGRAM JR // F	#4 CALIYA ROBINSON SO // F
MIN: 31.7	MIN: 26.7	MIN: 33.9	MIN: 29.8	MIN: 28.6
PPG: 5.1	PPG: 6.2	PPG: 12.9	PPG: 11.9	PPG: 15.9
FG%: 34.3%	FG%: 32.2%	FG%: 41.3%	FG%: 44.2%	FG%: 53.6%
3FG%: 33.3%	3FG%: 29.5%	3FG%: 23.5%	3FG%: 31.4%	3FG%: 33.3%
TOTAL AST: 53	TOTAL AST: 29	TOTAL AST: 50	TOTAL BLK: 9	TOTAL BLK: 25



QUICK FACTS

Location	Athens, Ga.
Founded	1785
Enrollment	36,130
Nickname	Bulldogs
School colors	Red and Black
Facility Name	Stegeman Coliseum
All-Time Record at Stegeman	452-96
Capacity	10,523
Affiliation	NCAA D-I
Conference	SEC
President	Jere W. Morehead (Georgia, '80)
J. Reid Parker Director of Athletics	Greg McGarity (Georgia, '76)
Deputy Director of Athletics	Dr. Carla Williams (Georgia, '89)

HISTORY

First Year of Sport	1973
All-Time Record	929-400 (.700)
NCAA Tournament Appearances	32



Front (L to R): Caliya Robinson, Kortney Eisenman, Bianca Blanaru, Halle Washington, Mackenzie Engram
Back (L to R): Taja Cole, Simone Costa, Stephanie Paul, Shanea Armbrister, Pachis Roberts, Haley Clark

NUMERICAL ROSTER

No.	Name	Pos.	Ht.	Cl./Exp.	Hometown/Previous School
* 0	Taja Cole	G	5-7	So.-TR	Richmond, Va. / Louisville
1	Shanea Armbrister	G	6-2	Jr.-JC	Nassau, Bahamas / Darton (Ga.) College
3	Stephanie Paul	G/F	5-11	Fr.-HS	Naples, Fla. / Community School of Naples
4	Caliya Robinson	F	6-3	So.-1L	Marietta, Ga. / McEachern HS
11	Pachis Roberts	G/F	5-11	Sr.-2L	Powder Springs, Ga. / Syracuse
12	Haley Clark	G	5-9	Jr.-2L	Orlando, Fla. / Edgewater HS
23	Halle Washington	F	6-2	Sr.-3L	Bossier City, La. / Parkway HS
24	Simone Costa	G	5-10	Jr.-TR/JC	Lisbon, Portugal / Independence (Kan.) CC
25	Ari Henderson	G	5-7	Fr.-HS	Chamblee, Ga./Chamblee High School
^30	Kortney Eisenman	F	6-3	Fr.-HS	Columbus, Ohio / Upper Arlington HS
33	Mackenzie Engram	F	6-2	Jr.-2L	Powder Springs, Ga. / Hillgrove HS
* 51	Bianca Blanaru	F	6-5	Jr.-TR	Timisoara, Romania / Washington State

^ medically disqualified due to a heart condition (an enlarged heart) that was discovered before the season

* will sit out this season due to NCAA transfer rules

ALPHABETICAL ROSTER

No.	Name	Pos.	Ht.	Cl./Exp.	Hometown/Previous School
1	Shanea Armbrister	G	6-2	Sr.-JC	Nassau, Bahamas / Darton (Ga.) College
* 51	Bianca Blanaru	F	6-5	Jr.-TR	Timisoara, Romania / Washington State
12	Haley Clark	G	5-9	Jr.-2L	Orlando, Fla. / Edgewater HS
24	Simone Costa	G	5-10	Jr.-TR/JC	Lisbon, Portugal / Independence (Kan.) CC
* 0	Taja Cole	G	5-7	So.-TR	Richmond, Va. / Louisville
^30	Kortney Eisenman	F	6-3	Fr.-HS	Columbus, Ohio / Upper Arlington HS
33	Mackenzie Engram	F	6-2	Jr.-2L	Powder Springs, Ga. / Hillgrove HS
25	Ari Henderson	G	5-7	Fr.-HS	Chamblee, Ga./Chamblee High School
3	Stephanie Paul	G/F	5-11	Fr.-HS	Naples, Fla. / Community School of Naples
11	Pachis Roberts	G/F	5-11	Sr.-2L	Powder Springs, Ga. / Syracuse
4	Caliya Robinson	F	6-3	So.-1L	Marietta, Ga. / McEachern HS
23	Halle Washington	F	6-2	Sr.-3L	Bossier City, La. / Parkway HS

^ medically disqualified due to a heart condition (an enlarged heart) that was discovered before the season

* will sit out this season due to NCAA transfer rules

COACHING STAFF

Head Coach:

Joni Taylor (Alabama '02, second season at UGA as head coach, 13 as assistant prior)

Associate Head Coach:

Karen Lange (Iowa '96, second season at UGA and 20th overall)

Assistant Coaches:

Robert Mosley (Miles '99, fifth season at UGA and seventh overall)

Chelsea Newton (Rutgers '05, second season at UGA and eighth overall)

PRONUNCIATION GUIDE

- SHANEA (Shuh-nay) ARMBRISTER (Arm-briss-ter)
- Bianca BLANARU (Blan-ah-roo)
- TAJA (Tah-juh) Cole
- Simone COSTA (like 'cost'-uh)
- PACHIS (Patches) Roberts
- CALIYA (Cuh-lie-uh) Robinson
- HALLE (Haley) Washington
- ARI (Are-ee) Henderson





Season Stats (2016-17)					
PPG	RPG	Assists	FG%	3FG%	FT%
5.7	4.3	31	35.9%	18.8%	65.0%

Career Highs		
Points	13	W. Carolina 12/28/16
Rebounds	10	2X, last Ga Tech 11/20/16
Assists	8	Mercer 11/13/16

#1 SHANEA ARMBRISTER

Highlights

- » Recorded the first double-figure scoring game of her career with 13 pts. vs. Western Carolina (12/28)
- » First four career starts have all come this season
- » Has recorded a career-high of 10 rebounds twice this season - vs. SC State and Georgia Tech
- » Bahamas native in her second season at Georgia



Season Stats (2016-17)					
PPG	RPG	Assists	FG%	3FG%	FT%
2.2	1.3	7	26.1%	10.0%	80.0%

Career Highs		
Points	11	BYU 11/16/16
Rebounds	4	2X, last Cinn 12/15/16
Assists	3	W. Carolina 12/28/16

#3 STEPHANIE PAUL

Highlights

- » Played a career-high 24 minutes vs. Virginia (12/19)
- » The 78th true freshman to start at Georgia during the NCAA era
- » Started three-straight games from Nov. 24-29
- » Entered the game in the second half and finished with 11 pts. vs. BYU
- » Prepped at Community School of Naples in Naples, Fla.
- » Two-time Naples Daily News Girls Basketball Player of the Year



Season Stats (2016-17)					
PPG	RPG	Blocks	FG%	3FG%	FT%
15.9	6.5	25	53.6%	33.3%	58.3%

Career Highs		
Points	30	vs. Minnesota 11/24/16
Rebounds	11	2x last Samford 12/22/16
Blocks	5	2X, last Ark 2/25/16

#4 CALIYA ROBINSON

Highlights

- » Ranks 10th in the SEC in scoring with 15.9 ppg
- » 15-game double-figure scoring streak came to an end at Missouri
- » First UGA player since Tasha Humphrey in 2008 (32 vs. Florida) to score 30 or more points in a game with her 30 pt. effort vs. Minnesota (11/24)
- » One of four Lady Dogs to record three career 20 pt, 11 reb. games since 2000, joining Christi Thomas, Tasha Humphrey and Kara Braxton
- » 2016 SEC All-Freshman Team selection



Season Stats (2016-17)					
PPG	RPG	Assists	FG%	3FG%	FT%
12.9	7.3	50	41.3%	23.5%	79.0%

Career Highs		
Points	29	W. Carolina 12/28/16
Rebounds	14	Kenn. State 11/29/16
Assists	6	3x, last vs. Ken. St. 11/29/16

#11 PACHIS ROBERTS

Highlights

- » Scored a career-high 29-points vs. Western Carolina (12/28)
- » All three career double-doubles have come this season
- » Fifth in the SEC in minutes played with 33.9 mpg
- » Scored in double figures in each of the first six games this season, 11 times overall and in the last three contests



Season Stats (2016-17)					
PPG	RPG	Assists	FG%	3FG%	FT%
5.1	3.3	53	34.3%	33.3%	67.4%

Career Highs		
Points	9	3X, last vs. Mercer 11/13/16
Rebounds	8	Minnesota 11/24/16
Assists	7	Texas A&M 1/5/17

#12 HALEY CLARK

Highlights

- » Set a career high with seven assists vs. Texas A&M
- » Has started 15 games this season after only starting four the previous two years
- » Taking over Georgia's point guard duties this season
- » Averaged 24.5 minutes per game in two postseason games last year
- » Finance major who placed on the SEC Academic Honor Roll last season



Season Stats (2016-17)					
PPG	RPG	Blocks	FG%	3FG%	FT%
4.8	2.5	8	50.0%	0%	40.0%

Career Highs		
Points	17	at Florida 1/14/16
Rebounds	10	SC State 11/11/16
Blocks	3	3X, last vs. Ole Miss 2/9/14

#23 HALLE WASHINGTON

Highlights

- » Saw her streak of 20-straight regular season starts come to an end vs. Samford (12/22)
- » Suffered a sprained right ankle vs. USF, but returned the next game vs. Kennesaw State
- » Finished one point from her career high with 16 pts. vs. BYU; also had a career-best five assists vs. the Cougars



Season Stats (2016-17)					
PPG	RPG	Assists	FG%	3FG%	FT%
6.2	2.2	29	32.2%	29.5%	70.6%

Career Highs		
Points	14	W. Carolina 12/28/16
Rebounds	5	at Missouri 1/1/17
Assists	6	BYU 11/16/16

#24 SIMONE COSTA

Highlights

- » Coming off perhaps her best game of the year with 13 points vs. Texas A&M; hit a 3-pointer on UGA's first possession of the fourth quarter
- » Has started eight-straight games
- » Scored a career-high 14 pts. vs. Western Carolina
- » Played a career-high 34 minutes vs. Virginia
- » Plays at the No 2 spot, but shares time with Haley Clark at point guard
- » A native of Lisbon, Portugal



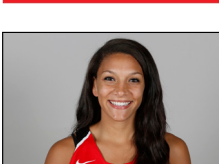
Season Stats (2016-17)					
PPG	RPG	Assists	FG%	3FG%	FT%
1.0	0.2	0	33.3	0	75%

Career Highs		
Points	3	vs. Kenn. State 11/29/16
Rebounds	1	vs. BYU 11/16/16
Assists	NA	

#25 ARI HENDERSON

Highlights

- » Walk-on who joined the team in October
- » Hit first field goal of her career in the fourth quarter against W. Carolina
- » Came in the game late and hit 3-for-4 from the FT line against Kennesaw State



Season Stats (2016-17)					
PPG	RPG	Blocks	FG%	3FG%	FT%
11.9	6.1	9	44.2%	31.4%	70.7%

Career Highs		
Points	23	vs. Kenn. State 11/29/16
Rebounds	12	vs. Ok State 12/3/16
Blocks	4	vs. Miss. State 1/2/15

#33 MACKENZIE INGRAM

Highlights

- » 2016-17 AllState Good Works Team nominee
- » Had an 18-point effort vs. Virginia and 19 vs. Texas A&M
- » Scored a career-high 23 pts. on her 21st Birthday vs. Kennesaw State
- » Had 21 pt. effort vs. BYU; 16 of those pts. came in the first half
- » Strong return after missing final 15 games last season due to an illness known as Pericarditis
- » 2015 SEC All-Freshman Team selection
- » Her brother Evan is an All-American tight end at Ole Miss





Head Coach Joni Taylor

Personal Info

Date of Birth
March 7, 1979

Hometown
Meridian, Miss.

Family

Husband: Darius Taylor
Daughter: Jacie Elise

Education

High School:
Meridian ('97)
Bachelor's:
Alabama ('02) - Education

Coaching Experience

2015-pres.
Georgia (Head Coach)
2012-15
Georgia (Associate Head Coach)
2011-12
Georgia (Assistant Coach)
2010-11
LSU (Assistant Coach)
2008-10
Alabama (Associate Head Coach)
2007-08
Louisiana Tech (Associate Head Coach)
2005-07
Louisiana Tech (Assistant Coach)
2002-05
Troy (Assistant Coach)

Postseason Experience

2016 NCAA First Round (Georgia)
2014 NCAA First Round (Georgia)
2013 NCAA Elite Eight (Georgia)
2012 NCAA First Round (Georgia)
2006 NCAA First Round (Louisiana Tech)
2001 WNIT Second Round (Alabama)
2000 WNIT First Round (Alabama)
1999 NCAA Second Round (Alabama)
1998 NCAA Sweet 16 (Alabama)

Playing Experience

1997-01 Alabama

Honors

2016 Maggie Dixon Coach of the Year
2016 Georgia College Coach of the Year
2001 SEC Community Service Team
2000 SEC Community Service Team
1999 SEC Community Service Team
1997 Miss. HS Gatorade Player of the Year

Four In Double Figures Against Aggies

» Georgia jumped out early and never relinquished the lead against Texas A&M on Thursday, building as much as a 19-point advantage in the first half. A big reason for the Lady Bulldogs' success was balanced scoring -- Mackenzie Engram, Pachis Roberts, Simone Costa and Caliya Robinson were all in double figures -- and a stifling defense that held A&M to just 35.9% shooting from the floor.

Career Days Against Western Carolina

» Three players set career highs in scoring in the win against Western Carolina last week. Shanea Armbrister recorded her first career double-figure scoring game with 13 points, while Simone Costa scored 14 and Pachis Roberts scored 29. Roberts' total put her above the 20-point mark for just the second time in her career.

Robinson Puts Her Name Among Georgia Greats

» **With her 24-point, 11-rebound effort against Samford on Dec. 22, Caliya Robinson became just the fourth Lady Bulldog since 2000 to record three or more 20-point, 10 rebound games in their careers, joining an elite group of former Lady Dogs — Tasha Humphrey, Christi Thomas and Kara Braxton.**

Robinson currently ranks 10th in the league in scoring with 15.9 points per game. She already has 12 double-figure scoring efforts (surpassing last year's total) and four double-doubles (tying last year's total).

The First 30 Since 2008

» **Caliya Robinson became the first Lady Bulldog since Tasha Humphrey in 2008 to score 30 points in a single game.** Robinson had a career day against Minnesota on Nov. 24, scoring 30 points off a 14-for-27 shooting performance. Humphrey scored 32 points against Florida on Feb. 24, 2008.

Pachis Ups Production In Final Season

» **Pachis Roberts has recorded three double-doubles in her career -- all of them coming this season.** The senior from Powder Springs, Georgia currently ranks fifth in the SEC in minutes played (33.9 per game) and has played 40-plus minutes three times this season.

Short Bench, Starting Five Shift for The Lady Bulldogs

» Georgia's roster features just eight scholarship players and one walk-on this season. A big reason for that is the Lady Bulldogs lost four senior starters off last year's team and lost incoming freshman Kortney Eisenman due to a heart condition before the start of the season.

Georgia has used six different starting lineup combinations so far with the latest being the combination of Haley Clark, Simone Costa, Pachis Roberts, Mackenzie Engram and Caliya Robinson.

Georgia Gets First Road Win At Cincinnati

» Georgia used a strong second half to pick up its first road win of the year at Cincinnati's Fifth Third Arena. With the scored tied 26-26 at the half, the Lady Bulldogs used an 8-0 run to begin the second half to hold off the Bearcats. Simone Costa finished with a career-high 11 points, while Caliya Robinson and Pachis Roberts each scored in double figures.

Engram Scores Career High On 21st Birthday

» Junior forward Mackenzie Engram celebrated her 21st Birthday on Nov. 29 by scoring a career-high 23-points against Kennesaw State. **Engram, who sat out the final 15 games last season due to an illness known as Pericarditis, has scored in double figures seven times this season, including two 20-plus point efforts.**

Freshman Picks Up Consecutive Starts

» Georgia freshman guard/forward Stephanie Paul started three games from Nov. 24-29. Paul played 11 minutes in the first start of her career against Minnesota. She then saw 15 minutes of action against USF. Before Paul was inserted into the starting five, Georgia had used the same starters -- Haley Clark, Shanea Armbrister, Pachis Roberts, Mackenzie Engram and Halle Washington -- in the first four games this season.



TEAM COMPARISON		
GEORGIA		VANDERBILT
62.8	Scoring	73.1
42.0%	FG%	42.8%
26.1%	3FG%	39.8%
36.5	Rebounds	41.1
15.0	Assists	15.5
3.9	Blocks	2.6
8.8	Steals	7.2
58.2	Scoring Def.	68.3
36.7%	FG% Def.	38.7%
30.1%	3FG% Def.	31.2%
+0.3	Reb. Margin	+4.2
+1.7	T/O Margin	-3.3
0.9	Ast-T/O Ratio	0.9

LADY DOGS BY THE NUMBERS

- 5
 Georgia has been to five Final Fours -- 1983, 1985, 1995, 1996, 1999.
- 7
 The Lady Bulldogs have won seven SEC regular season titles - 1983, 1984, 1986, 1991, 1996, 1997, 2000
- 8
 Georgia played eight non-conference teams that made postseason play a year ago.
- 12
 A Georgia player has been named a WBCA All-American 12 times.
- 25
 Georgia has put 25 players in the WNBA, with 21 of those coming since 1999.
- 30
 Head Coach Joni Taylor and her staff have a combined 30 years of experience.
- 32
 The Lady Bulldogs' 32 NCAA appearances rank second nationally.
- 41
 A total of 41 Lady Dogs have gone on to play professionally. Shacobia Barbee is now in Spain and Merritt Hempe is playing in Germany.

Scouting Vanderbilt

» Vanderbilt is led by first-year SEC head coach Stephanie White, who came to Nashville after spending two seasons as the head coach of the WNBA's Indiana Fever. The Commodores returned four starters off of last year's squad and can go 10-12 players deep during a game. Vanderbilt has lost four-straight games but before that won eight consecutive games from Nov. 20-Dec. 18, which started with a notable win against current No. 13-ranked Duke. Rachel Bell leads the team in scoring with her 12.1 ppg, while Christa Reed averages 10.6 ppg.

Georgia Downs Pair Of Conference Champs

» The Lady Bulldogs have taken down two teams that won their respective conference championships last season. Mercer, the 2016 Southern Conference Co-Champion returned all five starters, while BYU returned three starters off its 2016 West Coast Conference championship team. The Cougars set several school records last season, including a 16-game win streak late in the year, on their way to the NCAA Tournament.

Joni Taylor Gives Birth To First Baby Girl

» Head coach Joni Taylor and her husband Darius welcomed their first child, Jacie Elise Taylor, into the world Nov. 3. She weighed 6 pounds, 5 ounces and is 20 inches long. Associate head coach Karen Lange took over head coaching duties in the interim through the first six games. Taylor was on the bench for each of those games, except when the team played in the Bahamas on Nov. 24 and 26.

Georgia's 2017 Signing Class Ranked Top-10 Nationally

The Lady Bulldogs' 2017 signing class currently ranks among the top-10 in the nation according to ESPN.com's Hoopgurlz. Head coach Joni Taylor and her staff have signed some of the top players in the country, with all four of this year's signees ranking in the ESPN top-100.

Que Morrison // Guard // Powder Springs, Georgia // ESPN.com Five Stars

Quannecia 'Que' Morrison is one of the top high school players in the state of Georgia and a five-star prospect according to ESPN's HoopGurlz. Morrison, who helped Powder Springs, Georgia, powerhouse McEachern High School to a state championship this past year, is ranked as the No. 31 overall prospect and the No. 7 guard nationally in the 2017 class according to ESPN's Hoopgurlz.

Gabby Connally // Point Guard // San Antonio, Texas // ESPN.com Five Stars

Gabrielle 'Gabby' Connally is one of the top point guard prospects in the 2017 class according to several recruiting services. Entering her senior season at Brandeis High School in San Antonio, Texas, Connally is one of the most sought-after recruits in the country. She is ranked No. 46 overall and No. 8 at the point guard spot nationally according to ESPN HoopGurlz and is ranked 23rd overall by ProspectsNation.com.

Malury Bates // Forward // Roanoke, Virginia // ESPN.com Four Stars

A native of Roanoke, Virginia, Malury Bates is ranked No. 68 overall nationally and the No. 8 post player in the country according to ESPN's HoopGurlz. Bates is entering her senior season at William Fleming High School. The 6-foot-3 center was a Virginia High School Coaches Association 4A First Team selection this past year as she helped her team to the 4A Girls Finals.

Maya Caldwell // Guard // Charlotte, North Carolina // ESPN.com Four Stars

Maya Caldwell is ranked as the No. 76 overall and 15th-ranked wing prospect according to ESPN Hoopgurlz and is also ranked No. 72 overall nationally by ProspectsNation.com. Caldwell is entering her senior season at Davidson Day School. She was a 2016 USA Today First-Team All-North Carolina selection and a 2015 North Carolina Independent School Association Second-Team honoree and three-time Charlotte Observer all-state selection.



GEORGIA'S 2016-17 INDIVIDUAL MISCELLANEOUS STATS

Double-Figure Scoring Games

Player	13-14	14-15	15-16	16-17	Career
Shanea Armbrister	--	--	--	1	1
Stephanie Paul	--	--	--	1	1
Caliya Robinson	--	--	10	12	22
Pachis Roberts	2	3	7	11	23
Haley Clark	--	--	--	--	--
Halle Washington	--	2	2	1	5
Simone Costa	--	--	--	4	4
Ari Henderson	--	--	--	--	--
Mackenzie Engram	--	10	7	8	25

20-Point Plus Scoring Games

Player	13-14	14-15	15-16	16-17	Career
Shanea Armbrister	--	--	--	--	--
Stephanie Paul	--	--	--	--	--
Caliya Robinson	--	--	--	5	5
Pachis Roberts	--	--	1	1	2
Haley Clark	--	--	--	--	--
Halle Washington	--	--	--	--	--
Simone Costa	--	--	--	--	--
Ari Henderson	--	--	--	--	--
Mackenzie Engram	--	1	--	2	3

Double-Figure Rebounding Games

Player	13-14	14-15	15-16	16-17	Career
Shanea Armbrister	--	--	--	2	2
Stephanie Paul	--	--	--	--	--
Caliya Robinson	--	--	5	3	8
Pachis Roberts	--	--	--	4	4
Haley Clark	--	--	--	--	--
Halle Washington	--	--	--	1	1
Simone Costa	--	--	--	--	--
Ari Henderson	--	--	--	--	--
Mackenzie Engram	--	1	1	1	3

Double-Doubles

Player	13-14	14-15	15-16	16-17	Career
Shanea Armbrister	--	--	--	--	--
Stephanie Paul	--	--	--	--	--
Caliya Robinson	--	--	4	4	8
Pachis Roberts	--	--	--	3	3
Haley Clark	--	--	--	--	--
Halle Washington	--	--	--	--	--
Simone Costa	--	--	--	--	--
Ari Henderson	--	--	--	--	--
Mackenzie Engram	--	1	1	--	2

Georgia Replacing Production

» Entering 2016-17, the Lady Bulldogs had to replace four senior starters off of last year's team. Shacobia Barbee, Tiaria Griffin, Merritt Hempe and Marjorie Butler accounted for 65 percent of Georgia's scoring and over 50 percent of the team's rebounding a season ago. Barbee and Griffin were two All-SEC performers, while Butler played in all 31 games at the point guard spot. The group combined for 479 games played and made three NCAA Tournaments (Elite Eight in 2013).

Engram Returns To Lady Dog Lineup

» Junior forward Mackenzie Engram, a 2015 SEC All-Freshman Team selection who quickly made an impact on the Lady Bulldogs' roster in her first season, returned to Georgia's lineup after missing the final 15 games last year due to an illness known as Pericarditis.

Engram finished fourth on the team in both scoring and rebounding in 2014-15, averaging 7.7 ppg and 4.5 rpg. The Powder Springs, Ga., native started seven games near the end of her freshman campaign, before taking her spot in the Lady Dogs' regular rotation through all of non-conference action a year ago. Engram had upped her average to 8.2 ppg and 5.4 rpg before her illness, which started to take affect after the Kentucky game on Jan. 10, 2016.

Lady Bulldogs Go International

» Georgia's roster has an international feel to it this season with the addition of Romania native and Washington State transfer Bianca Blanaru as well as Portugal native Simone Costa. Shanea Armbrister, who is in her second season with the Lady Bulldogs, grew up in the Bahamas and will make a return trip home when Georgia travels to the Junkanoo Jam on Nov. 24-26.

Robinson Rises Among SEC's Top Up-and-Comers

» Georgia's Caliya Robinson completed a banner year in 2015-16. Robinson etched her name into the history books, moving ahead of UGA great Katrina McClain for the fifth-most blocked shots for a Georgia freshman with 48 -- a total that ranked third overall in the SEC last season.

She was an x-factor all season long and finished strong, recording four consecutive double-figure scoring games down the stretch. The 2016 SEC All-Freshman Team selection and three-time SEC Freshman of the Week honoree finished the year averaging 8.0 points per game to go along with 5.7 rebounds per contest.

Georgia's All-Time Freshmen Single-Season Blocked Shots Leaders

Player	Year	Blocks
1. Kara Braxton	2001-02	59
Tracy Henderson	1993-94	59
3. Tawana McDonald	1998-99	56
4. Barbara Bootz	1983-84	53
5. Caliya Robinson	2015-16	48
6. Katrina McClain	1983-84	43



THE LAST MEETING - VANDERBILT 51, UGA 49 (OT) - 3/3/16



Official Basketball Box Score -- Game Totals -- Final Statistics
VANDERBILT vs Georgia
 03/03/16 8:30 PM at VETERANS MEMORIAL ARENA-JACKSONVILLE, FL



VANDERBILT 54 - 18-13

#	Player	Total		3-Ptr		Rebounds		PF	TP	A	TO	Blk	Stl	Min
		FG-FGA	FT-FTA	FG-FGA	FT-FTA	Off	Def							
22	Marques Webb	2-6	0-0	2-4	4	5	9	5	6	2	5	1	0	31
03	Rachel Bell	2-7	0-2	1-2	2	3	5	3	5	1	3	0	1	33
23	Minta Spears	4-13	3-6	6-7	0	2	2	2	17	1	1	0	3	45
25	Morgan Batey	2-6	0-0	2-4	3	2	5	3	6	4	3	1	3	38
31	Christa Reed	8-13	2-2	2	2	2	4	5	18	0	4	1	0	34
03	Rebekah Dahlman	0-4	0-1	0-0	1	1	2	0	0	0	0	0	1	15
15	Jasmine Jenkins	0-1	0-0	0-2	0	0	0	0	0	0	2	0	0	7
35	Kendall Shaw	0-0	0-0	0-0	0	2	2	1	0	0	0	0	0	5
44	Rayte'a Long	0-1	0-0	2-2	0	2	2	4	2	0	2	0	1	17
Team						1 3 4								
Totals		18-51	3-10	15-23	13	22	35	23	54	8	20	3	9	225

FG % 1st Half:	9-24	37.5%	2nd half:	7-22	31.8%	OT:	2-5	40.0%	Game:	18-51	35.3%	Deadball
3FG % 1st Half:	2-5	40.0%	2nd half:	1-4	25.0%	OT:	0-1	0.0%	Game:	3-10	30.0%	Rebounds
FT % 1st Half:	0-2	0.0%	2nd half:	11-15	73.3%	OT:	4-6	66.7%	Game:	15-23	65.2%	4.3

Georgia 49 - 21-9

#	Player	Total		3-Ptr		Rebounds		PF	TP	A	TO	Blk	Stl	Min
		FG-FGA	FT-FTA	FG-FGA	FT-FTA	Off	Def							
13	Merritt Hempe	3-9	0-1	1-3	1	3	4	4	7	0	4	2	1	24
23	Halle Washington	2-5	0-0	3-6	2	0	2	4	7	2	1	1	1	18
03	Tiarra Griffin	2-9	0-3	2-5	0	3	3	1	6	0	3	0	1	27
11	Pachis Roberts	3-11	0-3	1-1	1	2	3	4	7	4	1	0	0	35
24	Marjorie Butler	1-6	0-2	2-2	2	6	8	2	4	2	5	1	1	44
01	Shanea Armbrister	0-1	0-1	0-0	0	0	0	1	0	0	3	0	0	11
04	Caliya Robinson	6-13	0-2	2-2	6	6	12	5	14	1	2	1	0	31
12	Haley Clark	1-2	0-0	2-2	1	2	3	4	4	1	2	0	0	35
25	Amber Skidgel	0-0	0-0	0-0	0	0	0	0	0	0	0	0	0	0+
Team						3 1 4								
Totals		18-56	0-12	13-21	16	23	39	25	49	10	21	5	4	225

FG % 1st Half:	9-31	29.0%	2nd half:	8-20	40.0%	OT:	1-5	20.0%	Game:	18-56	32.1%	Deadball
3FG % 1st Half:	0-6	0.0%	2nd half:	0-5	0.0%	OT:	0-1	0.0%	Game:	0-12	0.0%	Rebounds
FT % 1st Half:	2-4	50.0%	2nd half:	10-13	76.9%	OT:	1-4	25.0%	Game:	13-21	61.9%	5.1

Officials: FELICIA GRINTER, SCOTT YARBROUGH, KEVIN PETHEL
 Technical fouls: VANDERBILT-None. Georgia-None.
 Attendance: 3094

Score by periods	1st	2nd	3rd	4th	OT	Total	In	Off	2nd	Fast	Bench
VANDERBILT	18	2	12	14	8	54	Points	Paint	T/O	Chance	Break
Georgia	8	12	14	12	3	49	VANDY	22	11	9	2
							UGA	34	18	10	4

Last FG - VANDY OT-01:43, UGA OT-03:19.
 Largest lead - VANDY by 13 1st-04:06, UGA by 6 4th-01:33.
 VANDY led for 20:14, UGA led for 15:10. Game was tied for 09:13.

Score tied - 9 times.
 Lead changed - 4 times.

March 3, 2016 - Vandy Gives UGA SEC Tournament OT Loss

JACKSONVILLE, Fla. -- After falling behind 16-3 in the game's first six minutes, the Georgia Lady Bulldog basketball team (21-9, 9-8) used a gritty comeback effort with stellar defense the rest of the way to force overtime, but ultimately fell to Vanderbilt (18-13, 7-11) by a 54-49 score on Thursday night at Veterans Memorial Arena in Jacksonville.

Freshman forward Caliya Robinson had a standout performance, claiming her fourth double-double of the season with 14 points and 12 rebounds before fouling out with one second remaining in regulation play.

The Lady Bulldogs started slow on the defensive end, allowing buckets on all of Vanderbilt's first six possessions to give the Commodores a commanding 13-3 lead into the first media timeout. The deficit reached 16-3 with about four minutes left in the opening quarter, but Pachis Roberts picked up the team offensively with five-straight points to trim the deficit to eight at the end of the opening 10 minutes.

Georgia remained the hot hand throughout the second quarter, owning the first eight minutes of the frame with a 12-0 run to take a 20-18 lead. It was not until the 1:34 mark that the Commodores were able to score to tie the game at 20 apiece, and the score remained through the end of the half as the teams headed to the locker rooms.

Neither team could find any separation at the start of the third quarter, with the teams trading buckets initially until the Lady Dogs found a way to open up a four-point margin. Vanderbilt twice cut the Bulldog lead to two but could never quite pull even as the Lady Dogs maintained a 34-32 lead through three periods. Georgia was seconds away from holding a five-point lead at the end of three, but a buzzer-beating trey from deep brought Vanderbilt back within striking distance.

The Commodores tied the game at the 7:40 mark at 34 points with a

Strong Start To Taylor Era In First Year

» Georgia stormed out to an impressive start last season under head coach Joni Taylor, rolling to a 12-1 record before conference play began on Jan. 3. The Lady Bulldogs finished the year with a 21-10 record and 9-7 mark in SEC play, putting Taylor's name in elite company for first-year head coaches. **In fact, Taylor became one of just 12 coaches in SEC history to record 20 or more wins in his or her first year with their respective programs.**

Dominant Defense A Trademark Of 2015-16 Season

» Georgia paced the Southeastern Conference in nearly every defensive category last season. The Lady Bulldogs ranked first in scoring defense (54.1 points per game), field-goal percentage defense (35 percent) and 3-point field-goal percentage defense (24.3%). The 54.1 points allowed per game marks the second-best defensive points per game effort for a single season in school history.

20-Win Season The Usual For Georgia

» Georgia recorded 20 or more wins for the 30th time in the past 37 years with its 21-10 record in 2015-16, building on the great tradition and history of Lady Bulldog basketball. With their appearance in the 2016 NCAA Tournament, the Lady Dogs rank second all-time in NCAA history with 32 appearances -- a total that only trails Tennessee.

Five Top-25 Wins In 2015-16

» Georgia won five games over ranked opponents during the 2015-16 season for the first time since 2006-07. Four of those victories came against SEC foes, while one win came against then-No. 21 Seton Hall, who finished third in the Big East. UGA also had a victory against BYU, who won the West Coast Conference regular season title.

Taylor Gets Most Prestigious Honor For First Year Coach

» Georgia head coach Joni Taylor won several honors for her team's success in her first year as head coach. Among them was the 2016 Spalding Maggie Dixon National Rookie Coach of the Year award, which goes to the top first-year head coach in the country. Taylor also earned the Atlanta Tip-Off Club Georgia College Coach of the Year honor.



Head coach Joni Taylor being presented the Atlanta Tip-Off Club College Coach of the Year Award last season.



GEORGIA'S RECORD WHEN

Overall Record	9-6
Home Games	7-2
Road Games	1-3
Neutral Site Games	1-1
SEC Games	1-1
Home Games.....	1-0
Road Games	0-1
SEC Tournament Games.....	0-0
Non-Conference Games.....	8-5
Home Games.....	6-2
Road Games	1-2
Neutral Site Games	1-1
November Games	5-2
December Games.....	3-3
January Games	1-1
February Games.....	0-0
March Games	0-0
Monday Games	2-1
Tuesday Games	0-0
Wednesday Games	2-0
Thursday Games	3-1
Friday Games	1-0
Saturday Games.....	0-2
Sunday Games.....	1-2
Day Games.....	4-3
Night Games	5-3
Overtime Games.....	0-0
Televised Games	6-2
Leading at Halftime	6-1
Trailing at Halftime	2-5
Tied at Halftime.....	1-0
Shot 40% or Better FG	7-1
Shot Less Than 40% FG.....	2-5
Opp. Shot 40% or Better FG.....	0-5
Opp. Shot Less Than 40% FG.....	9-1
Led In Rebounds.....	3-2
Trailed In Rebounds.....	4-4
Tied In Rebounds.....	2-0
Committed Fewer Turnovers.....	7-2
Committed More Turnovers	1-3
Committed Same Turnovers.....	1-1
Scored 0-49 Points	0-3
Scored 50-59 Points.....	1-2
Scored 60-69 Points.....	3-1
Scored 70-79 Points.....	3-0
Scored 80-89 Points.....	2-0
Scored 90+ Points	0-0
Allowed 0-49 Points.....	3-0
Allowed 50-59 Points	4-1
Allowed 60-69 Points	2-3
Allowed 70-79 Points	0-1
Allowed 80-89 Points	0-1
Allowed 90+ Points.....	0-0

2016-17 SEC STANDINGS (AS OF JAN. 6)

	SEC				Overall						
	W-L	Pct.	H	A	W-L	Pct.	H	A	N	LS	Strk
Mississippi State	2-0	1.000	1-0	1-0	16-0	1.000	4-0	7-0	5-0	5-0	W16
South Carolina	2-0	1.000	1-0	1-0	12-1	.923	7-0	4-1	1-0	5-0	W6
Tennessee	2-0	1.000	1-0	1-0	10-4	.714	7-1	3-3	0-0	5-0	W6
Alabama	1-1	.500	1-0	0-1	13-2	.867	11-1	0-1	2-0	4-1	W1
Auburn	1-1	.500	0-1	1-0	11-5	.688	4-2	4-2	3-1	3-2	L1
Georgia	1-1	.500	1-0	0-1	9-6	.600	7-2	1-3	1-1	2-3	W1
Kentucky	1-1	.500	1-0	0-1	10-5	.667	10-1	0-4	0-0	3-2	W1
LSU	1-1	.500	1-0	0-1	12-3	.800	8-1	1-1	3-1	4-1	W1
Ole Miss	1-1	.500	1-0	0-1	12-3	.800	11-0	0-3	1-0	4-1	L1
Missouri	1-1	.500	1-0	0-1	11-5	.688	9-0	1-4	1-1	3-2	L1
Texas A&M	1-1	.500	1-0	0-1	11-4	.733	7-1	2-2	2-1	3-2	L1
Arkansas	0-2	.000	0-1	0-1	11-4	.733	8-2	1-2	2-0	2-3	L2
Florida	0-2	.000	0-1	0-1	9-6	.600	1-1	2-4	6-1	2-3	L2
Vanderbilt	0-2	.000	0-1	0-1	10-5	.667	6-2	3-3	1-0	1-4	L4

GEORGIA TEAM STAT RANKINGS

Category	NCAA.....	SEC
Assists per game (15.0).....	98	9
Blocks per game (3.9).....	102	6
FG percentage (42.0).....	108	12
FG percentage def. (36.7)	79	8
FT percentage (68.1).....	189	10
Rebound Margin (+0.3)	179	12
Scoring Defense (58.2).....	59	7
Scoring Offense (62.8)	224	14
Steals per game (8.8).....	123	8
3-point FG percentage (26.1)	316	12
Turnover margin (+1.7).....	111	9

GEORGIA PLAYER STAT RANKINGS

Category	NCAA.....	SEC
Caliya Robinson		
Scoring (15.9).....	133	10
Blocks (25)	72	3
Field Goals Made (89).....	87	9
Pachis Roberts		
Minutes played (33.9)	127	5
Rebounds (7.3)	204	10

NATIONAL POLLS

Rk.	Team	AP POLL	
		Record	Conf.
1	Connecticut (33)	13-0	825
2	Baylor	13-1	781
3	Maryland	13-1	739
4	Mississippi State	15-0	714
5	South Carolina	11-1	691
6	Florida State	13-1	654
7	Notre Dame	12-2	651
8	Louisville	13-2	610
9	UCLA	11-2	551
10	Stanford	12-2	497
11	Ohio State	12-4	440
12	Washington	14-2	418
13	Duke	12-1	415
14	Miami	11-2	405
15	Texas	8-4	324
16	Oregon State	13-1	304
17	West Virginia	13-1	289
18	Virginia Tech	13-0	282
19	Arizona State	10-3	256
20	California	13-1	160
20	Oklahoma	11-3	160
22	South Florida	11-1	146
23	DePaul	10-4	88
24	Kentucky	9-5	71
25	Kansas State	11-3	54

USA TODAY COACHES POLL

Rk.	Team	Record	Conf.
1	Connecticut (32)	13-0	800
2	Baylor	13-1	747
3	Maryland	13-1	723
4	Mississippi State	15-0	701
5	South Carolina	11-1	681
6	Notre Dame	13-2	637
7	UCLA	11-2	578
8	Florida State	13-2	533
9	Louisville	13-3	499
10	Stanford	12-2	475
11	Washington	14-2	444
12	Oregon State	13-1	439
13	Ohio State	12-4	430
14	Miami	12-2	387
15	Duke	13-1	383
16	West Virginia	13-1	304
17	Texas	8-4	284
18	Virginia Tech	14-0	249
19	Arizona State	10-3	235
20	California	13-1	204
21	DePaul	11-4	140
22	South Florida	11-1	110
23	NC State	12-3	107
24	Oklahoma	11-3	97
25	Syracuse	10-5	83



THE LAST TIME GEORGIA**Scored 100 points or more:**

Dec. 17, 2007 - UGA 102, Mercer 45

Scored 115 points or more:

Nov. 22, 1998 - UGA 118, Oral Roberts 64

Scored less than 50 points:

Jan. 1, 2017 - Missouri 63, Georgia 45

Scored 50 points in a half:

Dec. 28, 2015 - UGA 81, Tenn. Tech 48 (50, 1H)

Allowed 100 points:

Jan. 14, 1999 - UGA 69, No. 1 Tennessee 102

Held opponent to 40 points or less:

Nov. 29, 2016 - UGA 82, Kennesaw State 40

Held opponent to 20 or less points in a half:Nov. 29, 2016 - UGA 78, W. Carolina 43
(20 in the second half)**Shot better than 60% from the field:**

March 5, 2009 - UGA vs. Kentucky (63.3%)

Won an overtime game:

Feb. 3, 2011 - UGA vs. Oklahoma State (74-71)

Lost an overtime game:

March 3, 2016 - Vandy 54, UGA 49

Played a double-overtime game:

Jan. 22, 2004 - UGA at Ole Miss (79-90)

Played a triple-overtime game:

Never

Played a quadruple-overtime game:

Never

Had at least 20 steals in a game:

Nov. 25, 2014 - vs. Georgia Southern (23)

Forced 30 turnovers in a game:

Nov. 30, 2011 - vs. S.C. State (30)

Had a player score 30 points:

Nov. 24, 2016 - Caliya Robinson (30) vs. Minnesota

Had a player score 40 points:

Dec. 6, 1997 - Coco Miller (45) vs. Charleston Southern

Had a player grab 15 rebounds:

Feb. 7, 2016 - Shacobia Barbee (15) vs. Ole Miss

Had a player grab 20 rebounds:

Dec. 4, 1986 - Katrina McClain (22) vs. Valdosta State

Had a player dish out 10 or more assists:

Nov. 15, 2015 - Shacobia Barbee (10) vs. Stetson

Had a player block five shots:

Feb. 25, 2016 - Caliya Robinson (5) vs. Arkansas

Had a player block 10 shots:

March 19, 1995 - Tracy Henderson (10) vs. Louisville

Had a player with seven or more steals in a game:

Dec. 1, 2013 - Shacobia Barbee (7) vs. Georgia State

Had two players record a double-double in same game:

Feb. 14, 2016 vs. LSU - Shacobia Barbee (14 pts, 10 rebs.) and Caliya Robinson (19 pts, 11 rebs.)

Had a player record a triple-double:

Nov. 15, 2015 vs. Stetson - Shacobia Barbee vs. Stetson; 10 pts., 13 rebs., 10 assists

Had a player record a double-double in back-to-back games:

Shacobia Barbee -- Feb. 7, 2016 vs. Ole Miss (12 pts., 15 rebs.), Feb. 14 vs. LSU (14 pts., 10 rebs.)

Had a player record a double-double in three consecutive games:

Jasmine Hassell - Feb. 7, 2013 vs. Auburn (10 rebs., 15 points), Feb. 10, 2013 vs. LSU (12 rebs., 18 points), Feb. 17, 2013 vs. Florida (16 rebs., 16 points)

Had two players score 20 points in a game:

Nov. 29, 2016 vs. Kennesaw State - Caliya Robinson (25); Mackenzie Engram (23)

Had five or more players score in double figures:

Nov. 16, 2016 vs. BYU - M. Engram (21), H. Washington (16), P. Roberts (12), S Paul (11), C. Robinson (10)

Played a ranked opponent:

Feb. 22, 2016 - Georgia 74, No. 22 Florida 63

Beat a ranked opponent:

Feb. 22, 2016 - Georgia 74, No. 22 Florida 63

Beat a ranked opponent at home:

Feb. 22, 2016 - Georgia 74, No. 22 Florida 63

Beat a ranked opponent on the road:

Feb. 4, 2016 - Georgia 65, No. 20 Missouri 50

Beat a ranked opponent on a neutral court:

March 25, 2013 - UGA 65, No. 23 Iowa State 60 in Spokane, Wash. (Second round of the NCAA Tournament)



GAME 1
GEORGIA 64, SOUTH CAROLINA STATE 50
 NOV. 11 // STEGEMAN COLISEUM // ATHENS, GA.



Official Basketball Box Score -- Game Totals -- Final Statistics
 South Carolina State vs Georgia
 11/11/16 7 p.m. ET at Athens, Ga. (Stegeman Coliseum)



South Carolina State 50 • 0-1

#	Player	Total			3-Ptr			Rebounds			PF	TP	A	TO	Blk	Stl	Min												
		FG	FGA	FT	FTA	Off	Def	Tot																					
05	MURRAY, JaQuanna	f	3-6	0-2	0-2	1	0	1	4	6	0	1	4	0	3	20													
15	BRADLEY, Jahmia	f	2-5	0-2	2-2	3	2	5	2	6	1	7	0	0	31														
04	BLAIR, Breyasha	g	8-21	2-7	3-4	1	1	2	2	21	3	3	0	2	30														
22	DRUMGOOLE, Brittany	g	2-10	2-6	0-0	1	4	5	3	6	3	0	0	0	38														
25	STONE, Mallory	g	1-9	0-0	3-4	3	2	5	3	5	0	3	0	1	28														
01	GARRETT, Regina	g	0-0	0-0	0-0	0	0	0	0	0	0	1	0	1	2														
03	WILLIAMS, Chantel	g	1-4	1-4	1-2	0	1	1	0	4	0	1	0	0	21														
20	BIMPA, Schekinah	g	0-0	0-0	0-2	1	2	3	0	0	1	0	0	0	23														
32	SCOTT, Alexis	g	1-1	0-0	0-0	1	2	3	0	2	0	0	0	0	7														
Team			5-21			9-16			14			20			34			17			50			7			200		

1st - FG %: 4-14 28.6% 2nd: 3-15 20.0% 3rd: 6-13 46.2% 4th: 5-14 35.7% Game: 18-56 32.1% Deadball Rebounds 4
 3FG %: 2-6 40.0% 1-5 20.0% 2-6 40.0% 0-6 0.0% 5-21 23.8%
 FT %: 4-6 66.7% 0-0 0.0% 5-8 62.5% 0-2 0.0%

Georgia 64 • 1-0

#	Player	Total			3-Ptr			Rebounds			PF	TP	A	TO	Blk	Stl	Min												
		FG	FGA	FT	FTA	Off	Def	Tot																					
23	Halle Washington	f	2-8	0-0	4-6	6	4	10	2	8	1	1	1	0	19														
33	Mackenzie Engram	f	7-12	0-2	1-3	3	4	7	2	15	3	4	1	1	34														
01	Shanea Armbrister	g	3-10	2-6	0-0	4	6	10	2	8	2	1	0	0	31														
11	Pachis Roberts	g	5-12	0-3	4-4	9	2	11	2	14	2	2	0	1	37														
12	Haley Clark	g	4-10	0-1	1-2	0	2	2	3	9	2	3	0	2	37														
03	Stephanie Paul	g	0-8	0-3	0-0	2	2	4	1	0	0	4	0	1	15														
24	Simone Costa	g	3-8	1-6	3-3	0	1	1	2	10	3	2	0	1	26														
25	Ari Henderson	g	0-0	0-0	0-0	0	0	0	0	0	0	0	0	0	1														
Team			24-68			3-21			13-18			26			27			53			15			64			200		

1st - FG %: 6-19 31.6% 2nd: 7-13 53.8% 3rd: 8-17 47.1% 4th: 9-19 47.4% Game: 24-68 35.3% Deadball Rebounds 3
 3FG %: 0-6 0.0% 2-6 33.3% 0-4 0.0% 1-5 20.0% 3-21 14.3%
 FT %: 4-6 66.7% 1-2 50.0% 4-4 100.0%

Officials: Brian Garland, Kyle Galloway and Charlie Hust
 Technical fouls: South Carolina State-None, Georgia-None
 Attendance: 2864

Score by periods	1st	2nd	3rd	4th	Total
South Carolina State	14	7	19	10	50
Georgia	16	20	17	11	64

GAME 2
GEORGIA 72, MERCER 64
 NOV. 13 // STEGEMAN COLISEUM // ATHENS, GA.



Official Basketball Box Score -- Game Totals -- Final Statistics
 Mercer vs Georgia
 11/13/16 2 p.m. ET at Athens, Ga. (Stegeman Coliseum)



Mercer 64 • 1-1

#	Player	Total			3-Ptr			Rebounds			PF	TP	A	TO	Blk	Stl	Min																								
		FG	FGA	FT	FTA	Off	Def	Tot																																	
02	Amanda Thompson	f	3-5	0-0	1-2	3	4	7	3	7	1	2	0	2	37																										
22	Alex Williams	f	2-6	0-0	4-6	1	1	2	5	8	2	3	1	2	28																										
01	Sydni Means	g	2-7	0-0	5-6	1	7	8	4	9	5	3	0	3	39																										
11	Linnea Rosendal	g	1-4	1-2	0-0	0	3	3	1	3	1	3	0	0	21																										
24	Kahlia Lawrence	g	5-18	0-0	3-5	1	3	4	1	13	2	1	0	1	38																										
23	Kayla Potts	g	0-0	0-0	0-0	1	0	1	0	4	0	1	0	0	7																										
25	KeKe Calloway	g	10-22	4-11	0-0	0	2	2	2	24	0	1	0	1	30																										
Team			10-22			4-11			0			2			24			0			1			30																	
Totals			23-62			5-13			13-19			8			21			29			20			64			11			14			1			9			200		

1st - FG %: 4-14 28.6% 2nd: 7-19 36.8% 3rd: 6-13 46.2% 4th: 6-16 37.5% Game: 23-62 37.1% Deadball Rebounds 4
 3FG %: 1-1 100.0% 1-4 25.0% 2-4 50.0% 1-4 25.0% 5-13 38.5%
 FT %: 4-6 66.7% 2-2 100.0% 3-5 60.0% 4-6 66.7% 13-19 68.4%

Georgia 72 • 2-0

#	Player	Total			3-Ptr			Rebounds			PF	TP	A	TO	Blk	Stl	Min																		
		FG	FGA	FT	FTA	Off	Def	Tot																											
23	Halle Washington	f	3-3	0-0	0-0	0	5	5	4	6	0	2	1	1	15																				
33	Mackenzie Engram	f	2-9	0-2	4-4	0	8	8	3	8	0	3	0	1	29																				
01	Shanea Armbrister	g	3-8	0-3	0-1	2	3	5	1	6	8	2	0	2	34																				
11	Pachis Roberts	g	5-14	1-6	8-10	2	7	9	2	19	5	3	0	2	40																				
12	Haley Clark	g	3-6	1-1	2-4	0	5	5	4	9	3	5	0	1	30																				
03	Stephanie Paul	g	0-0	0-0	0-0	1	0	1	0	0	0	1	0	0	2																				
04	Caliya Robinson	g	10-13	1-3	3-4	3	1	4	1	24	0	0	4	1	32																				
24	Simone Costa	g	0-3	0-2	0-0	0	2	2	3	0	2	4	0	2	18																				
Team			26-56			3-17			17-23			11			32			43			18			72			18			20			200		

1st - FG %: 6-14 42.9% 2nd: 3-15 20.0% 3rd: 9-12 75.0% 4th: 8-15 53.3% Game: 26-56 46.4% Deadball Rebounds 3
 3FG %: 0-4 0.0% 1-7 14.3% 1-3 33.3% 1-3 33.3% 17-23 73.9%
 FT %: 2-4 50.0% 3-4 75.0% 8-9 88.9% 4-6 66.7%

Officials: Bob Trammell, Metta Roberts, Jody Cantrell
 Technical fouls: Mercer-None, Georgia-None
 Attendance: 2497

Score by periods	1st	2nd	3rd	4th	Total
Mercer	13	17	17	17	64
Georgia	14	10	27	21	72

GAME 3
GEORGIA 81, BYU 51
 NOV. 16 // STEGEMAN COLISEUM // ATHENS, GA.



Official Basketball Box Score -- Game Totals -- Final Statistics
 BYU vs Georgia
 11/16/16 7 p.m. at Athens, Ga. (Stegeman Coliseum)



BYU 51 • 1-1

#	Player	Total			3-Ptr			Rebounds			PF	TP	A	TO	Blk	Stl	Min															
		FG	FGA	FT	FTA	Off	Def	Tot																								
22	NIELSON, Kristine	f	1-3	1-2	1-2	2	1	3	0	4	1	4	0	0	21																	
32	PURCELL, Kalani	f	1-8	0-2	0-0	1	6	7	4	2	3	6	0	2	34																	
30	MOODY, Jasmine	f	3-6	0-1	2-2	3	5	8	3	8	1	2	0	0	26																	
23	BROADHEAD, Cassie	g	5-7	1-1	5-5	0	2	2	4	16	2	5	1	2	36																	
20	PULSIPHER, Makenzi	g	3-10	1-8	5-5	1	0	1	2	12	1	3	0	5	32																	
01	CHASE, Brenna	g	2-3	0-1	0-0	0	1	1	1	4	0	0	0	0	6																	
02	CHATMAN, Jessica	g	0-3	0-1	0-2	0	1	1	2	0	1	0	0	0	6																	
03	SALMON, Shalae	g	0-0	0-0	1-2	0	1	1	1	1	0	0	0	0	3																	
04	WAYMENT, Amanda	g	0-1	0-0	0-0	0	0	0	2	0	0	1	0	1	7																	
11	EATON, Liz	g	0-1	0-0	0-0	0	0	0	0	0	1	0	0	0	4																	
34	ORTON, Micaelee	g	0-0	0-0	0-0	0	0	0	0	0	0	0	0	0	10																	
03	RYDALCH, Haley	g	1-2	0-1	0-2	1	1	2	1	2	0	1	0	0	8																	
50	HANKS, MaCayla	g	1-2	0-0	0-0	0	1	1	2	0	1	2	0	0	6																	
Team			17-46			3-17			14-20			10			21			31			21			51			10			199		

1st - FG %: 5-13 38.5% 2nd: 2-12 16.7% 3rd: 2-7 28.6% 4th: 8-14 57.1% Game: 17-46 37.0% Deadball Rebounds 3
 3FG %: 1-4 25.0% 1-6 16.7% 1-3 33.3% 3-7 85.7% 14-20 70.0%
 FT %: 2-2 100.0% 3-3 100.0% 9-8 87.5% 6-7 85.7%

Georgia 81 • 3-0

#	Player	Total			3-Ptr			Rebounds			PF	TP	A	TO	Blk	Stl	Min																		
		FG	FGA	FT	FTA	Off	Def	Tot																											
23	Halle Washington	f	8-12	0-0	0-0	1	2	3	3	16	5	1	1	0	28																				
33	Mackenzie Engram	f	8-13	3-5	2-2	2	3	5	1	21	1	3	1	2	31																				
01	Shanea Armbrister	g	2-4	0-1	1-1	4	2	6	3	5	2	2	0	0	28																				
11	Pachis Roberts	g	4-7	0-3	4-5	1	2	3	4	12	2	0	0	0	25																				
12	Haley Clark	g	1-5	0-0	1-1	0	2	2	3	3	1	4	0	0	34																				
03	Stephanie Paul	g	4-6	1-2	2-4	0	0	0	1	11	0	0	0	1	9																				
04	Caliya Robinson	g	4-8	0-2	2-2	1	5	6	2	10	2	0	0	4	21																				
24	Simone Costa	g	0-2	0-0	3-6	0	2	2	0	3	6	1	0	0	23																				
25	Ari Henderson	g	0-1	0-0	0-0	0	1	1	0	0	0	0	0	0	1																				
Team			31-58			4-13			15-21			9			22			31			17			81			19			22			200		

1st - FG %: 7-14 50.0% 2nd: 7-16 43.8% 3rd:

GAME 5
GEORGIA 70, MINNESOTA 58
NOV. 24 // JUNKANOO JAM // BIMINI, BAHAMAS



Official Basketball Box Score -- Game Totals -- Final Statistics
Minnesota vs Georgia
11/24/16 1:00 pm at Junkanoo Jam Bimini



Minnesota 58 • 4-1

#	Player	Total			3-Ptr			Rebounds			PF	TP	A	TO	Blk	Stl	Min
		FG-FGA	FG-FGA	FT-FTA	Off	Def	Tot	Off	Def	Tot							
05	Bello, Taije	0-2	0-0	3-4	4	3	7	4	3	0	0	0	0	0	0	31	
10	Edwards, Jessie	2-4	0-0	1-3	1	4	5	1	5	0	0	0	0	0	0	22	
23	Bell, Kenisha	6-21	0-3	8-8	1	3	4	2	20	5	4	0	1	39			
33	Wagner, Carlisle	5-17	1-7	3-3	6	2	8	3	14	2	7	0	1	38			
34	Hubbard, Gadiva	6-21	2-9	2-6	1	3	4	4	16	1	3	0	0	37			
15	Starr, Allina	0-1	0-0	0-0	0	1	1	0	0	0	0	0	0	3			
21	Brunson, Jasmine	0-0	0-0	0-0	0	1	1	0	0	0	0	0	0	3			
22	Hedstrom, Joanna	0-2	0-2	0-0	2	2	4	1	0	0	0	0	0	13			
32	Barnes, Karly	0-2	0-0	0-0	2	3	5	4	0	0	0	0	0	14			
Team					5	3	8										
Totals		19-70	3-21	17-24	22	25	47	19	58	8	14	0	2	200			

1st FG %:	5-12	41.7%	2nd:	6-20	30.0%	3rd:	6-19	31.6%	4th:	5-19	26.3%	Game:	19-70	27.1%	Deadball	
3FG %:	2-3	66.7%	0-8	0.0%	0-7	0.0%	1-3	33.3%	3-21	14.3%	Rebounds					
FT %:	5-6	83.3%	1-2	50.0%	6-11	54.5%	5-5	100.0%	17-24	70.8%	4					

Georgia 70 • 4-1

#	Player	Total			3-Ptr			Rebounds			PF	TP	A	TO	Blk	Stl	Min
		FG-FGA	FG-FGA	FT-FTA	Off	Def	Tot	Off	Def	Tot							
03	Stephanie Paul	0-1	0-0	0-0	0	1	1	1	0	0	0	0	0	0	0	11	
11	Pachis Roberts	3-10	0-2	6-6	4	8	12	1	12	6	2	0	0	34			
12	Haley Clark	1-3	0-1	3-4	2	6	8	4	5	3	0	0	0	37			
23	Halle Washington	2-5	0-0	0-0	1	3	4	4	4	1	2	0	0	26			
33	Mackenzie Ingram	1-7	0-0	0-0	2	2	4	4	2	2	1	0	0	18			
01	Shanea Armbrister	3-7	0-3	3-6	2	3	5	3	9	5	1	0	1	24			
04	Caliya Robinson	14-27	2-5	0-0	2	3	5	1	30	4	1	3	0	33			
24	Simone Costa	3-4	2-3	0-0	0	0	0	3	8	0	3	0	0	17			
Team					2	4	6										
Totals		27-64	4-14	12-16	15	30	45	21	70	23	13	3	3	200			

1st FG %:	7-20	35.0%	2nd:	10-14	71.4%	3rd:	4-16	25.0%	4th:	6-14	42.9%	Game:	27-64	42.2%	Deadball	
3FG %:	0-4	0.0%	2-4	50.0%	0-2	0.0%	2-4	50.0%	4-14	28.6%	Rebounds					
FT %:	0-0	0.0%	0-0	0.0%	3-6	50.0%	9-10	90.0%	12-16	75.0%	1,2					

Officials: John Capolino, Kathy Lynch, Brian Brunnett
Technical fouls: Minnesota-None, Georgia-None
Attendance: 229

Score by periods	1st	2nd	3rd	4th	Total
Minnesota	17	7	18	16	58
Georgia	14	22	11	23	70

GAME 6
USF 81, GEORGIA 65
NOV. 26 // JUNKANOO JAM // BIMINI, BAHAMAS



Official Basketball Box Score -- Game Totals -- Final Statistics
Georgia vs USF
11/26/16 5:45 p.m. at Junkanoo Jam Bimini Bahamas



Georgia 65 • 4-2

#	Player	Total			3-Ptr			Rebounds			PF	TP	A	TO	Blk	Stl	Min
		FG-FGA	FG-FGA	FT-FTA	Off	Def	Tot	Off	Def	Tot							
03	Stephanie Paul	0-0	0-0	0-0	1	1	2	2	0	1	0	0	1	0	0	15	
04	Caliya Robinson	5-9	0-1	0-0	1	0	1	5	10	0	1	3	0	23			
11	Pachis Roberts	4-12	1-3	10-10	1	4	5	4	19	5	1	0	1	40			
12	Haley Clark	1-2	0-0	0-0	0	5	5	2	5	4	0	0	3	28			
23	Halle Washington	2-3	0-0	0-2	0	1	1	1	4	0	0	0	0	8			
01	Shanea Armbrister	2-8	1-2	2-2	2	1	3	3	7	1	0	0	0	25			
24	Simone Costa	2-5	0-2	2-2	2	0	2	2	6	1	1	0	0	27			
33	Mackenzie Ingram	6-15	1-4	4-4	3	2	5	4	17	1	0	0	0	34			
Team					3	1	4										
Totals		22-54	3-12	18-20	13	15	28	26	65	13	9	3	5	200			

1st FG %:	5-18	27.8%	2nd:	6-9	66.7%	3rd:	6-14	42.9%	4th:	3-15	20.0%	Game:	22-54	40.7%	Deadball	
3FG %:	0-1	0.0%	1-2	50.0%	1-3	33.3%	1-8	12.5%	3-12	25.0%	Rebounds					
FT %:	0-2	0.0%	8-8	100.0%	8-8	100.0%	2-2	100.0%	18-20	90.0%	1					

USF 81 • 4-0

#	Player	Total			3-Ptr			Rebounds			PF	TP	A	TO	Blk	Stl	Min
		FG-FGA	FG-FGA	FT-FTA	Off	Def	Tot	Off	Def	Tot							
11	PUJOL, Ariadna	10-13	2-4	1-1	0	3	3	3	23	2	4	0	1	35			
12	JESPERS, Maria	1-5	0-1	2-2	4	1	5	1	4	1	4	0	0	24			
22	FLORES, Laia	2-9	0-3	8-12	2	1	3	1	12	8	1	0	0	40			
33	LAKSA, Kijia	11-21	8-13	4-5	0	2	2	3	34	1	2	0	2	39			
45	WEBER, Katelyn	0-2	0-0	0-0	2	3	5	2	0	0	0	1	0	13			
03	BOND, Jazz	0-0	0-0	0-0	0	0	0	0	1	0	0	0	0	4			
01	FERREIRA, Laura	1-6	1-4	2-2	0	1	1	2	5	1	0	0	0	22			
13	NAGY, Dorotya	0-2	0-0	0-0	1	0	1	0	2	0	1	0	0	2			
23	HENSHAW, Tamara	1-1	0-0	1-4	4	5	9	1	3	1	0	1	0	21			
Team					6	4	10										
Totals		26-59	11-25	18-26	19	20	39	16	81	14	12	2	3	200			

1st FG %:	5-11	45.5%	2nd:	6-19	31.6%	3rd:	9-13	69.2%	4th:	6-16	37.5%	Game:	26-59	44.1%	Deadball	
3FG %:	1-4	25.0%	3-8	37.5%	5-6	83.3%	3-6	50.0%	11-25	44.0%	Rebounds					
FT %:	4-6	66.7%	4-6	66.7%	7-8	87.5%	3-6	50.0%	18-26	69.2%	7					

Officials: Rachelle Jones, Krystle Appenzel, Luis Gonzalez
Technical fouls: Georgia-None, USF-None.
Attendance: 543
Lucaya Division

Score by periods	1st	2nd	3rd	4th	Total
Georgia	10	21	25	9	65
USF	15	19	30	17	81

GAME 7
GEORGIA 82, KENNESAW STATE 40
NOV. 29 // STEGEMAN COLISEUM // ATHENS, GA.



Official Basketball Box Score -- Game Totals -- Final Statistics
Kennesaw State vs Georgia
11/29/16 7 p.m. at Athens, Ga. (Stegeman Coliseum)



Kennesaw State 40 • 1-5

#	Player	Total			3-Ptr			Rebounds			PF	TP	A	TO	Blk	Stl	Min
		FG-FGA	FG-FGA	FT-FTA	Off	Def	Tot	Off	Def	Tot							
22	JOHNSON, Allison	1-5	0-0	0-2	0	0	0	3	2	0	6	0	2	17			
9	YOUNG, Clara	6-13	4-5	0-0	0	2	2	0	16	1	4	0	0	36			
23	McPHEE, Deja	1-4	0-0	0-0	2	1	3	5	2	0	4	0	2	25			
24	WALKER, Icois	0-4	0-2	2-2	1	2	3	4	2	2	0	0	0	28			
44	SAWYERS, Deandrea	4-14	1-3	1-2	1	3	4	0	10	2	3	0	2	33			
04	DULKOSKI, Kelly	0-3	0-2	0-0	0	1	1	2	0	0	1	0	1	13			
12	LANDBY, Alexandra	0-0	0-0	0-0	0	0	0	1	0	0	0	0	0	2			
25	POLINSKY, Katie	0-1	0-0	0-0	1	2	3	2	0	0	1	0	0	16			
30	SMITH, Aareon	3-5	2-4	0-0	0	1	1	3	8	1	0	1	2	11			
31	BRANCH, Chloe	0-5	0-0	0-0	2	2	4	0	0	0	1	0	2	19			
Team					3	0	3										
Totals		15-54	7-16	3-6	10	14	24	20	40	6	24	0	14	200			

1st FG %:	3-10	30.0%	2nd:	2-10	20.0%	3rd:	4-17	23.5%	4th:	6-17	35.3%	Game:	15-54	27.8%	Deadball	
3FG %:	1-1	100.0%	1-3	33.3%	3-7	42.9%	2-5	40.0%	7-16	43.8%	Rebounds					
FT %:	0-0	0.0%	0-2	0.0%	1-2	50.0%	2-2	100.0%	3-6	50.0%	2					

Georgia 82 • 5-2

#	Player	Total			3-Ptr			Rebounds			PF
---	--------	-------	--	--	-------	--	--	----------	--	--	----

GAME 9
GEORGIA 67, FURMAN 62
DEC. 5 // STEGEMAN COLISEUM // ATHENS, GA.



Official Basketball Box Score -- Game Totals -- Final Statistics
Furman vs Georgia
12/5/16 7 p.m. at Athens, Ga. (Stegeman Coliseum)



Furman 62 - 4-5

#	Player	Total			3-Ptr			Rebounds			PF	TP	A	TO	Blk	Stl	Min
		FG-FGA	FG-FGA	FT-FTA	FG-FGA	FG-FGA	FT-FTA	Off	Def	Tot							
13	Kaitlyn Duncan	f	0-2	0-0	2-2	1	2	3	0	2	0	1	0	0	0	11	
24	Cierra Carter	f	4-10	1-4	3-4	1	12	13	3	12	0	3	0	2	40		
44	Tiara Wood	f	0-1	0-0	0-0	0	0	0	1	0	1	0	0	0	12		
10	LeJzae Davidson	g	4-8	3-7	4-6	1	4	5	2	15	1	3	0	1	40		
20	Whitney Bunn	g	3-15	1-8	5-6	0	1	1	3	12	5	7	0	1	40-		
03	Stephanie Oramas	g	0-0	0-0	0-0	0	0	0	0	0	0	0	0	0	0+		
11	Tierra Hodges	g	5-13	0-0	1-2	2	2	4	1	11	1	2	0	0	28		
12	Tatum Ragsdale	g	0-0	0-0	0-0	0	0	0	0	0	0	0	0	0	0+		
14	DeAnneisha Jackson	g	4-5	0-0	2-2	2	4	6	4	10	0	3	0	0	29		
Team						4	3	7									
Totals			20-54	5-19	17-22	11	28	39	14	62	8	20	0	4	200		

1st - FG %: 6-13 46.2% 2nd: 7-13 53.8% 3rd: 2-12 16.7% 4th: 5-16 31.3% Game: 20-54 37.0% Deadball Rebounds 2
3FG %: 1-2 50.0% 1-6 16.7% 1-6 16.7% 2-5 40.0% 5-19 26.3%
FT %: 2-2 100.0% 8-12 66.7% 5-6 83.3% 2-2 100.0% 17-22 77.3%

Georgia 67 - 6-3

#	Player	Total			3-Ptr			Rebounds			PF	TP	A	TO	Blk	Stl	Min
		FG-FGA	FG-FGA	FT-FTA	FG-FGA	FG-FGA	FT-FTA	Off	Def	Tot							
04	Caliya Robinson	f	9-18	2-4	0-0	2	8	10	4	20	3	3	1	1	40-		
23	Halle Washington	f	3-5	0-0	2-4	0	0	0	4	8	0	2	1	0	12		
11	Pachis Roberts	g	4-8	3-5	1-2	1	6	7	3	12	5	1	2	3	38		
12	Haley Clark	g	2-3	0-0	4-6	0	4	4	2	8	6	2	0	0	34		
24	Simone Costa	g	1-2	1-1	3-4	1	1	2	4	6	2	2	1	0	22		
01	Shanea Armbrister	g	1-4	0-1	0-0	0	1	1	1	2	0	2	0	0	20		
03	Stephanie Paul	g	0-1	0-1	0-0	0	0	0	1	0	1	0	0	0	6		
33	Mackenzie Engram	g	4-14	1-4	2-2	0	2	2	11	2	1	0	1	1	28		
Team						2	4	6									
Totals			24-55	7-16	12-18	6	26	32	21	67	18	14	5	5	200		

1st - FG %: 6-15 40.0% 2nd: 5-14 35.7% 3rd: 5-11 45.5% 4th: 8-15 53.3% Game: 24-55 43.6% Deadball Rebounds 3
3FG %: 3-5 60.0% 2-6 33.3% 1-2 50.0% 1-2 50.0% 7-16 43.8%
FT %: 2-2 100.0% 2-4 50.0% 6-8 75.0% 12-18 66.7%

Officials: Scott Yarbrough, Beverly Roberts and Felicia Grinter
Technical fouls: Furman-None, Georgia-None.
Attendance: 2078

Score by periods	1st	2nd	3rd	4th	Total
Furman	15	23	10	14	62
Georgia	17	14	13	23	67

GAME 10
GEORGIA 51, CINCINNATI 48
DEC. 15 // FIFTH THIRD ARENA // CINCINNATI, OHIO



Official Basketball Box Score -- Game Totals -- Final Statistics
Georgia vs Cincinnati
12/15/16 12:00 pm ET at Cincinnati, Ohio (Fifth Third Arena)



Georgia 51 - 7-3

#	Player	Total			3-Ptr			Rebounds			PF	TP	A	TO	Blk	Stl	Min
		FG-FGA	FG-FGA	FT-FTA	FG-FGA	FG-FGA	FT-FTA	Off	Def	Tot							
04	Caliya Robinson	f	5-8	0-1	0-0	2	4	6	4	10	3	1	2	2	25		
11	Pachis Roberts	f	5-11	1-3	3-5	4	4	8	2	14	2	3	0	6	40		
12	Haley Clark	g	3-7	0-0	2-2	0	6	6	0	8	4	3	0	1	40-		
23	Halle Washington	g	0-3	0-0	0-0	0	0	0	4	0	1	4	0	0	12		
24	Simone Costa	g	3-11	2-7	3-4	1	3	4	4	11	2	0	1	2	29		
01	Shanea Armbrister	g	0-3	0-1	0-0	0	0	0	1	0	0	1	0	0	10		
03	Stephanie Paul	g	0-6	0-0	0-0	1	3	4	2	0	3	0	2	1	14		
33	Mackenzie Engram	g	4-8	0-0	0-0	2	4	6	3	8	2	3	2	2	30		
Team						0	1	1									
Totals			20-57	3-12	8-11	10	25	35	20	51	14	18	5	15	200		

1st - FG %: 6-16 37.5% 2nd: 4-12 33.3% 3rd: 6-14 42.9% 4th: 4-15 26.7% Game: 20-57 35.1% Deadball Rebounds 5
3FG %: 1-3 33.3% 2-5 40.0% 0-2 0.0% 3-12 25.0%
FT %: 1-1 100.0% 2-2 100.0% 3-6 50.0% 2-2 100.0%

Cincinnati 48 - 6-4

#	Player	Total			3-Ptr			Rebounds			PF	TP	A	TO	Blk	Stl	Min
		FG-FGA	FG-FGA	FT-FTA	FG-FGA	FG-FGA	FT-FTA	Off	Def	Tot							
03	OWENS, Ana	f	3-15	2-6	0-0	0	3	3	1	11	3	4	0	1	40-		
13	TARVER, Brandey	f	0-0	0-0	0-0	1	1	2	2	0	0	0	0	0	16		
21	JOHNSON, Shanice	f	6-11	1-1	6-7	7	6	13	4	19	1	4	1	2	32		
05	QUISENBERRY, Blanca	f	1-6	1-3	2-4	0	5	5	2	5	2	3	0	1	30		
25	WARREN, Chelsea	f	1-2	0-0	0-4	1	2	3	2	1	3	0	1	1	26		
02	GOINGS, Nikira	f	1-4	1-4	2-2	0	1	1	3	5	0	1	0	1	17		
04	RIZOR, Angel	g	0-0	0-0	0-0	1	1	2	0	0	2	0	0	0	4		
12	MILLER, Antoinette	g	2-5	0-0	0-0	1	1	2	2	4	1	3	0	1	23		
20	BENHAM, Maya	g	1-4	0-0	0-0	0	2	2	0	2	0	0	0	1	10		
32	COLEMAN, Tinee'sha	g	0-1	0-1	0-0	0	0	0	0	0	0	0	0	0	2		
Team						2	3	5									
Totals			15-48	5-15	13-21	13	25	38	17	48	8	22	1	8	200		

1st - FG %: 4-10 40.0% 2nd: 4-12 33.3% 3rd: 3-15 20.0% 4th: 4-11 36.4% Game: 15-48 31.2% Deadball Rebounds 3
3FG %: 2-3 66.7% 1-4 25.0% 0-5 0.0% 2-3 66.7%
FT %: 2-8 75.0% 1-3 33.3% 2-4 50.0% 4-6 66.7%

Officials: Bryan Brunette, Rachelle Jones, Kevin Pethel
Technical fouls: Georgia-None, Cincinnati-JOHNSON, Shanice.
Attendance: 569

Score by periods	1st	2nd	3rd	4th	Total
Georgia	14	12	15	10	51
Cincinnati	16	10	8	14	48

GAME 11
VIRGINIA 66, GEORGIA 43
DEC. 19 // STEGEMAN COLISEUM // ATHENS, GA



Official Basketball Box Score -- Game Totals -- Final Statistics
Virginia vs Georgia
12/19/16 7 p.m. ET at Athens, Ga. (Stegeman Coliseum)



Virginia 66 - 8-2

#	Player	Total			3-Ptr			Rebounds			PF	TP	A	TO	Blk	Stl	Min
		FG-FGA	FG-FGA	FT-FTA	FG-FGA	FG-FGA	FT-FTA	Off	Def	Tot							
21	Lauren Moses	f	2-5	0-0	0-0	2	4	6	2	4	1	3	0	1	23		
04	Dominique Toussaint	g	5-10	1-3	2-3	1	2	3	2	13	2	3	0	1	25		
12	Breyana Mason	g	6-13	0-1	0-0	1	0	1	2	12	2	1	0	3	35		
13	Jocelyn Willoughby	g	4-9	0-0	5-6	4	6	10	3	13	0	4	0	6	31		
23	Aiyah Huland El	g	1-6	0-4	2-2	0	5	5	1	4	4	0	0	1	24		
02	JaeLisa Allen	g	0-0	0-0	0-0	1	0	1	0	0	0	0	0	0	1		
10	J'Kyra Brown	g	2-5	1-1	0-0	0	3	3	2	5	1	1	0	0	22		
14	Lisa Jablonowski	g	3-4	1-1	0-0	1	0	1	2	7	2	2	0	0	14		
30	Felicia Aiyectan	g	4-7	0-0	0-0	2	7	9	1	8	1	2	2	0	15		
32	Mone Jones	g	0-2	0-0	0-0	0	0	0	0	0	0	0	0	0	8		
35	Shakyna Payne	g	0-1	0-0	0-0	0	0	0	0	0	0	0	0	0	2		
Team						2	1	3									
Totals			27-62	3-10	9-11	14	28	42	15	66	13	16	2	12	200		

1st - FG %: 8-13 61.5% 2nd: 5-19 26.3% 3rd: 8-16 50.0% 4th: 6-14 42.9% Game: 27-62 43.5% Deadball Rebounds 0
3FG %: 1-3 33.3% 1-1 100.0% 0-2 0.0% 1-4 25.0%
FT %: 2-2 100.0% 2-3 66.7% 3-4 75.0% 2-2 100.0% 9-11 81.8%

Georgia 43 - 7-4

#	Player	Total			3-Ptr			Rebounds			PF	TP	A	TO	Blk	Stl	Min
		FG-FGA	FG-FGA	FT-FTA	FG-FGA	FG-FGA	FT-FTA	Off	Def	Tot							
04	Caliya Robinson	f	4-7	0-0	2-5	1	8	9	2	10	2	3	1	2	28		
23	Halle Washington	f	2-4	0-0	2-6	0	2	2	2	6	0	0	1	0	13		
11	Pachis Roberts	g	0-5	0-1	0-0	3	3	6	2	0	3	3	0	1	30		
12	Haley Clark	g	0-2	0-0	0-0	1	1	2	4	0	3	3	0	1	19		
24	Simone Costa	g	1-7	1-4	3-4	0	1	1	0	6	1	3	0	0	34		
01	Shanea Armbrister	g	0-3	0-2	1-2	2	5	7	0	1	1	2	0	1	14		
03	Stephanie Paul	g	1-8	0-2	0-0	1	0	1	1	2	1	5	0	1	24		
33	Mackenzie Engram	g	6														

GAME 13
GEORGIA 78, WESTERN CAROLINA 43
 DEC. 28 // STEGEMAN COLISEUM // ATHENS, GA.



Official Basketball Box Score - Game Totals - Final Statistics
 Western Carolina vs Georgia
 12/28/16 2 p.m. ET at Athens, Ga. (Stegeman Coliseum)



Western Carolina 43 • 4-10

#	Player	Total			3-Ptr			Rebounds			PF	TP	A	TO	Blk	Stl	Min
		FG-FGA	FG-FGA	FT-FTA	FG-FGA	FG-FGA	FT-FTA	Off	Def	Tot							
11	Sherae Bonner	f	5-12	1-1	0-0	3	5	8	2	11	1	4	1	1	31		
52	Emily Hatfield	f	1-3	1-2	0-0	2	1	3	5	3	0	1	0	0	15		
03	Kyia Hough	g	0-4	0-0	0-0	1	0	1	3	0	2	5	0	0	25		
04	Lauren LaPlant	g	0-4	0-4	0-0	1	1	2	1	0	1	0	0	0	20		
23	JonTay Mitchem	g	1-6	0-0	0-2	0	2	2	2	2	1	3	0	2	24		
12	Nikki Johnson	g	3-7	2-4	0-0	1	1	2	2	8	1	2	0	0	20		
20	Angel Allen	g	1-3	0-1	0-1	2	0	2	0	2	0	1	0	0	12		
31	Raziyah Farrington	g	1-5	0-1	0-0	0	2	2	2	2	2	3	0	0	19		
33	Tembre Moates	g	3-7	0-1	2-4	2	1	3	1	8	0	2	1	2	21		
34	Julia Brown	g	3-3	0-0	1-2	1	1	2	2	7	1	1	0	0	13		
Team						3	2	5			1						
Totals			18-54	4-14	3-9	16	16	32	20	43	9	23	2	5	200		

1st - FG %:	4-13	30.8%	2nd - FG %:	6-17	35.3%	3rd - FG %:	4-14	28.6%	4th - FG %:	4-10	40.0%	Game - FG %:	18-54	33.3%	Deadball
3FG %:	0-2	0.0%	3-6	50.0%	0-2	0.0%	1-4	25.0%	4-14	28.6%	0-0	0.0%	4-15	26.7%	Rebounds
FT %:	0-0	0.0%	0-2	0.0%	0-3	0.0%	3-4	75.0%	3-9	33.3%	0-0	0.0%	9-11	81.8%	2

Georgia 78 • 8-5

#	Player	Total			3-Ptr			Rebounds			PF	TP	A	TO	Blk	Stl	Min
		FG-FGA	FG-FGA	FT-FTA	FG-FGA	FG-FGA	FT-FTA	Off	Def	Tot							
11	Pachis Roberts	f	12-16	1-2	4-4	3	8	11	3	29	4	1	2	3	30		
23	Halle Washington	f	1-3	0-0	0-0	1	1	2	4	2	0	3	0	1	17		
33	Mackenzie Engram	f	5-9	1-1	3-7	0	9	9	2	14	1	1	2	3	33		
12	Haley Clark	g	0-1	0-0	0-0	0	0	0	5	0	1	3	0	1	11		
24	Simone Costa	g	5-9	2-3	2-3	1	3	4	0	14	4	2	0	1	40		
01	Shanea Armbrister	g	5-7	1-2	2-4	1	0	1	13	2	2	0	1	36			
03	Stephanie Paul	g	1-5	0-1	2-2	0	2	2	1	4	3	3	2	2	29		
25	Ari Henderson	g	1-2	0-0	0-0	0	0	0	2	0	0	0	1	4			
Team						3	0	3									
Totals			30-52	5-9	13-20	16	78	15	15	6	13	200					

1st - FG %:	7-13	53.8%	2nd - FG %:	8-13	61.5%	3rd - FG %:	9-16	56.3%	4th - FG %:	6-10	60.0%	Game - FG %:	30-52	57.7%	Deadball
3FG %:	1-3	33.3%	3-3	100.0%	1-3	33.3%	0-0	0.0%	5-9	55.6%	0-0	0.0%	5-9	55.6%	Rebounds
FT %:	2-2	100.0%	6-10	60.0%	5-6	83.3%	0-2	0.0%	13-20	65.0%	0-0	0.0%	13-20	65.0%	4

Officials: Denise Brooks, Metta Roberts and Kim Thebo
 Technical fouls: Western Carolina-None. Georgia-None.
 Attendance: 2754

Score by periods	1st	2nd	3rd	4th	Total
Western Carolina	8	15	8	12	43
Georgia	17	25	24	12	78

GAME 14
MISSOURI 63, GEORGIA 45
 JAN. 1 // MIZZOU ARENA // COLUMBIA, MO.



Official Basketball Box Score - Game Totals - Final Statistics
 Georgia vs Missouri
 01/01/17 12 p.m. at Missouri Arena



Georgia 45 • 8-6, 0-1

#	Player	Total			3-Ptr			Rebounds			PF	TP	A	TO	Blk	Stl	Min
		FG-FGA	FG-FGA	FT-FTA	FG-FGA	FG-FGA	FT-FTA	Off	Def	Tot							
04	Caliya Robinson	f	1-7	0-1	0-0	0	3	3	0	2	1	2	0	1	22		
11	Pachis Roberts	f	7-15	2-5	0-0	3	4	7	4	16	1	3	0	0	35		
33	Mackenzie Engram	f	0-1	0-1	3-4	2	3	5	4	3	0	0	0	0	19		
12	Haley Clark	g	1-8	0-0	4-4	0	1	1	3	6	4	6	0	2	40		
24	Simone Costa	g	2-8	1-3	1-2	1	4	5	1	6	2	1	0	1	26		
01	Shanea Armbrister	g	3-11	1-5	0-0	0	4	4	1	7	0	1	0	1	33		
03	Stephanie Paul	g	1-1	0-0	1-1	0	0	0	3	0	0	0	1	8			
23	Halle Washington	g	1-2	0-0	0-0	0	1	1	2	2	0	2	0	0	17		
Team						1	1	2			1						
Totals			16-53	4-15	9-11	7	21	28	15	45	8	16	0	9	200		

1st - FG %:	5-18	27.8%	2nd - FG %:	7-12	58.3%	3rd - FG %:	1-9	11.1%	4th - FG %:	3-14	21.4%	Game - FG %:	16-53	30.2%	Deadball
3FG %:	1-5	20.0%	1-3	33.3%	0-2	0.0%	2-5	40.0%	4-15	26.7%	0-0	0.0%	4-15	26.7%	Rebounds
FT %:	0-0	0.0%	3-3	100.0%	4-6	66.7%	2-2	100.0%	9-11	81.8%	0-0	0.0%	9-11	81.8%	2

Mizzou 63 • 11-4, 1-0

#	Player	Total			3-Ptr			Rebounds			PF	TP	A	TO	Blk	Stl	Min
		FG-FGA	FG-FGA	FT-FTA	FG-FGA	FG-FGA	FT-FTA	Off	Def	Tot							
04	PORTER, Cierra	f	6-12	0-1	8-8	1	11	12	1	20	0	0	2	1	33		
01	DOTY, Lianna	g	2-4	0-1	1-2	0	3	3	2	5	5	2	0	2	40		
03	CUNNINGHAM, Sophie	g	4-13	0-2	1-2	0	9	9	0	9	3	1	0	1	36		
11	CUNNINGHAM, Lindsey	g	1-3	0-2	2-2	1	0	1	2	4	3	1	0	2	36		
24	MICHAELIS, Sierra	g	8-15	4-8	0-0	1	3	4	2	20	2	5	0	3	37		
02	ROUNDTREE, Jordan	g	0-1	0-1	0-0	0	3	3	0	1	0	0	0	0	6		
10	CHAVIS, Jordan	g	1-1	1-1	0-0	0	0	0	1	3	0	2	0	1	1		
13	SCHUCHTS, Hannah	g	1-1	0-0	0-0	0	0	0	0	2	0	1	0	0	2		
20	MCDOWELL, Kayla	g	0-0	0-0	0-0	0	1	1	0	0	0	1	0	0	5		
23	SMITH, Amber	g	0-1	0-1	0-0	0	1	1	0	0	0	1	0	0	4		
Team						3	0	3			1						
Totals			23-51	5-17	12-14	7	30	37	8	63	14	15	2	10	200		

1st - FG %:	6-13	46.2%	2nd - FG %:	7-16	43.8%	3rd - FG %:	8-13	61.5%	4th - FG %:	2-9	22.2%	Game - FG %:	23-51	45.1%	Deadball
3FG %:	3-5	60.0%	0-5	0.0%	2-4	50.0%	0-3	0.0%	5-17	29.4%	0-0	0.0%	5-17	29.4%	Rebounds
FT %:	4-4	100.0%	0-0	0.0%	0-0	0.0%	8-10	80.0%	8-10	80.0%	0-0	0.0%	8-10	80.0%	2

Officials: Eric Brewton, Cameron Inouye, Eric Koch
 Technical fouls: Georgia-None. Missouri-None.
 Attendance: 3879

Score by periods	1st	2nd	3rd	4th	Total
Georgia	11	18	6	10	45
Mizzou	19	14	18	12	63

GAME 15
GEORGIA 69, TEXAS A&M 59
 JAN. 5 // STEGEMAN COLISEUM // ATHENS, GA.



Official Basketball Box Score - Game Totals - Final Statistics
 Texas A&M vs Georgia
 1/5/17 7 p.m. ET at Athens, Ga. (Stegeman Coliseum)



Texas A&M 59 • 11-4, 1-1

#	Player	Total			3-Ptr			Rebounds			PF	TP	A	TO	Blk	Stl	Min
		FG-FGA	FG-FGA	FT-FTA	FG-FGA	FG-FGA	FT-FTA	Off	Def	Tot							
00	Khaalia Hillsman	*	7-10	0-0	0-1	7	6	13	4	14	0	2	1	1	38		
05	Anriell Howard	*	5-11	0-0	4-4	4	7	11	5	14	0	7	0	1	33		
11	Curtyce Knox	*	8-22	0-5	1-1	0	0	0	4	17	8	8	0	3	40		
12	Danni Williams	*	2-12	0-2	6-6	2	2	4	3	10	0	2	0	1	35		
21	Jasmine Lumpkin	*	1-5	0-0	1-2	1	2	3	3	3	1	3	0	1	28		
03	Taylor Cooper	*	0-2	0-1	1-2	0	0	0	0	1	0	1	0	0	18		
15	Jasmine Williams	*	0-2	0-1	0-0	0	1	1	0	0	0	0	0	0	3		
24	Walnatia Wright	*	0-0	0-0	0-0	0	1	1	2	0	0	0	0	0	3		
25	Rakell Spencer	*	0-0	0-0	0-0	0	0	0	1	0	0	0	0	0	2		
Team						5	5	10			2						
Totals			23-64	0-9	13-16	19	24	43	22	59	9	25	1	7	200		

1st - FG %:	3-14	21.4%	2nd - FG %:	6-13	46.2%	3rd - FG %:	8-17	47.1%	4th - FG %:	6-20	30.0%	Game - FG %:	23-64	35.9%	Deadball
3FG %:	0-2	0.0%	0-1	0.0%	0-2	0.0%	0-4	0.0%	0-9	0.0%	0-0	0.0%	0-9	0.0%	Rebounds



#1 SHANEA ARMBRISTER

Guard • 6-2 • Senior • Nassau, Bahamas/Darton (Ga.) State

HIGHLIGHTS

- » Scored a career-high 13 pts. vs. Western Carolina (12/28) -- the first double-figure scoring game of her career
- » First four career starts have all come this season
- » Came off the bench to score a then career-high of 9 pts. vs. Minnesota (11/24)
- » Has registered a career-high 10 rebounds in two games this season - vs. SC State and Georgia Tech
- » Tallied then career highs in points (8), rebounds (10) and minutes played (31) in opener vs. SC State
- » Played in 21 total games last season, averaging just 7.5 minutes per game, during her first year with the Lady Bulldogs - she has upped that to 24.6 minutes per game this year
- » Native of Nassau, Bahamas

SEASON & CAREER HIGHS

POINTS

Season: 13 Western Carolina (12/28/16)
 Career: 13 Western Carolina (12/28/16)

REBOUNDS

Season: 10 2X, last - GA Tech (11/20/16)
 Career: 10 2X, last - GA Tech (11/20/16)

ASSISTS

Season: 8 Mercer (11/13/16)
 Career: 8 Mercer (11/13/16)

BLOCKS

Season: NA
 Career: NA

STEALS

Season: 2 2X, last - Kenn.State (11/29/16)
 Career: 2 2X, last - Kenn.State (11/29/16)

MINUTES

Season: 36 Western Carolina (12/28/16)
 Career: 36 Western Carolina (12/28/16)

MISCELLANEOUS STATS

DOUBLE-DIGIT POINTS

Season: 1 Career: 1

DOUBLE-DIGIT REBOUNDS

Season: 2 Career: 2

DOUBLE-DOUBLES

Season: xx Career: xx

20-POINT GAMES

Season: xx Career: xx

2016-17 GAME-BY-GAME

#01 Shanea Armbrister

Opponent	Date	gs	min	Total		3-Pointers		Free throws		Rebounds				pf	a	t/o	blk	stl	pts	avg	
				fg-fga	pct	3fg-fga	pct	ft-fa	pct	off	def	tot	avg								
SOUTH CAROLINA STAT	11/11/16	*	31	3-10	.300	2-6	.333	0-0	.000	4	6	10	10.0	2	2	1	0	0	8	8.0	
MERCER	11/13/16	*	34	3-8	.375	0-3	.000	0-1	.000	2	3	5	7.5	1	8	2	0	2	6	7.0	
BYU	11/16/16	*	28	2-4	.500	0-1	.000	1-1	1.000	4	2	6	7.0	3	2	2	0	0	5	6.3	
at Georgia Tech	11/20/16	*	33	2-8	.250	1-3	.333	2-2	1.000	5	5	10	7.8	2	4	0	0	1	7	6.5	
vs Minnesota	11/24/16		24	3-7	.429	0-3	.000	3-6	.500	2	3	5	7.2	3	5	1	0	1	9	7.0	
vs USF	11/26/16		25	2-8	.250	1-2	.500	2-2	1.000	2	1	3	6.5	3	1	0	0	0	7	7.0	
KENNESAW STATE	11/29/16		19	3-4	.750	0-0	.000	0-0	.000	2	1	3	6.0	1	4	0	0	2	6	6.9	
at Oklahoma State	12/3/16		16	4-5	.800	0-0	.000	0-0	.000	0	0	0	5.3	0	1	0	0	1	8	7.0	
FURMAN	12/5/16		20	1-4	.250	0-1	.000	0-0	.000	0	1	1	4.8	1	0	2	0	0	2	6.4	
at Cincinnati	12/15/16		10	0-3	.000	0-1	.000	0-0	.000	0	0	0	4.3	1	0	1	0	0	0	5.8	
VIRGINIA	12/19/16		14	0-3	.000	0-2	.000	1-2	.500	2	5	7	4.5	0	1	2	0	1	1	5.4	
SAMFORD	12/22/16		30	2-6	.333	0-1	.000	2-2	1.000	1	6	7	4.8	1	1	1	0	1	6	5.4	
WESTERN CAROLINA	12/28/16		36	5-7	.714	1-2	.500	2-4	.500	1	0	1	4.5	1	2	2	0	1	13	6.0	
at Mizzou	01/01/17		33	3-11	.273	1-5	.200	0-0	.000	0	4	4	4.4	1	0	1	0	1	7	6.1	
TEXAS A&M	1/5/17		15	0-4	.000	0-2	.000	0-0	.000	0	2	2	4.3	1	0	1	0	0	0	5.7	
Totals			4	368	33-92	.359	6-32	.188	13-20	.650	25	39	64	4.3	21	31	16	0	11	85	5.7

OVERALL CAREER STATISTICS

Year	GP	GS	Min	Total			3-Point			Free-Throw			Rebounds				PF	FO	Ast	TO	Blk	Stl	Pts	Avg	
				Avg	TFG	TFGA	.Pct	3FG	3FGA	.Pct	FT	FTA	.Pct	Off	Def	Tot									Avg
2015-16	21	0	158	7.5	17	52	.327	13	29	.448	0	2	.000	7	14	21	1.0	18	0	4	12	0	1	47	2.2
2016-17	15	4	368	24.5	33	92	.359	6	32	.188	13	20	.650	25	39	64	4.3	21	0	31	16	0	11	85	5.7
TOTAL	36	4	526	14.6	50	144	.347	19	61	.311	13	22	.591	32	53	85	2.4	39	0	35	28	0	12	132	3.7

SEC CAREER STATISTICS

Year	GP	GS	Min	Total			3-Point			Free-Throw			Rebounds				PF	FO	Ast	TO	Blk	Stl	Pts	Avg	
				Avg	TFG	TFGA	.Pct	3FG	3FGA	.Pct	FT	FTA	.Pct	Off	Def	Tot									Avg
2015-16	13	0	84	6.5	8	26	.308	7	15	.467	0	2	.000	3	3	6	0.5	11	0	3	5	0	1	23	1.8
2016-17	2	0	48	24.0	3	15	.200	1	7	.143	0	0	.000	0	6	6	3.0	2	0	0	2	0	1	7	3.5
TOTAL	15	0	132	8.8	11	41	.268	8	22	.364	0	2	.000	3	9	12	0.8	13	0	3	7	0	2	30	2.0





#3 STEPHANIE PAUL

G/F• 6-1 • Freshman • Naples, Fla./Community School of Naples

HIGHLIGHTS

- » Played a season-high 24 minutes against Virginia (Dec. 19)
- » She is the 78th true freshman in the NCAA era to start for Georgia
- » First career start came at the Junkanoo Jam against Minnesota
- » Came in the game in the second half vs. BYU and scored 11 points
- » Made collegiate debut vs. South Carolina State, playing 15 minutes in that contest
- » Prepped at Community School of Naples in Naples, Fla.
- » Two-time Naples Daily News Girls Basketball Player of the Year
- » Averaged 17.5 points per game and 7.2 rebounds per contest during her senior season of high school

SEASON & CAREER HIGHS

POINTS

Season: 11 BYU (11/16/16)
 Career: 11 BYU (11/16/16)

REBOUNDS

Season: 4 2X, last - Cin. (12/15/16)
 Career: 4 2X, last - Cin. (12/15/16)

ASSISTS

Season: 3 Western Carolina (12/28/16)
 Career: 3 Western Carolina (12/28/16)

BLOCKS

Season: 2 Western Carolina (12/28/16)
 Career: 2 Western Carolina (12/28/16)

STEALS

Season: 2 2x, last W. Carolina (12/28/16)
 Career: 2 2x, last W. Carolina (12/28/16)

MINUTES

Season: 24 Virginia (12/19/16)
 Career: 24 Virginia (12/19/16)

MISCELLANEOUS STATS

DOUBLE-DIGIT POINTS

Season: 1 Career: 1

DOUBLE-DIGIT REBOUNDS

Season: xx Career: xx

DOUBLE-DOUBLES

Season: xx Career: xx

20-POINT GAMES

Season: xx Career: xx

2016-17 GAME-BY-GAME

#03 Stephanie Paul

Opponent	Date	gs	min	Total		3-Pointers		Free throws		Rebounds				pf	a	t/o	blk	stl	pts	avg	
				fg-fga	pct	3fg-fga	pct	ft-fa	pct	off	def	tot	avg								
SOUTH CAROLINA STAT	11/11/16		15	0-8	.000	0-3	.000	0-0	.000	2	2	4	4.0	1	0	4	0	1	0	0.0	
MERCER	11/13/16		2	0-0	.000	0-0	.000	0-0	.000	1	0	1	2.5	0	0	1	0	0	0	0.0	
BYU	11/16/16		9	4-6	.667	1-2	.500	2-4	.500	0	0	0	1.7	1	0	0	0	1	11	3.7	
at Georgia Tech	11/20/16		4	0-0	.000	0-0	.000	0-0	.000	0	0	0	1.3	0	0	0	0	0	0	2.8	
vs Minnesota	11/24/16	*	11	0-1	.000	0-0	.000	0-0	.000	0	1	1	1.2	1	0	0	0	0	0	2.2	
vs USF	11/26/16	*	15	0-0	.000	0-0	.000	0-0	.000	1	1	2	1.3	2	0	1	0	0	0	1.8	
KENNESAW STATE	11/29/16	*	18	2-5	.400	0-1	.000	0-0	.000	0	1	1	1.3	2	1	2	1	0	4	2.1	
at Oklahoma State	12/3/16		14	0-2	.000	0-0	.000	0-0	.000	0	2	2	1.4	0	1	0	0	1	0	1.9	
FURMAN	12/5/16		6	0-1	.000	0-1	.000	0-0	.000	0	0	0	1.2	1	0	1	0	0	0	1.7	
at Cincinnati	12/15/16		14	0-6	.000	0-0	.000	0-0	.000	1	3	4	1.5	2	0	3	0	2	0	1.5	
VIRGINIA	12/19/16		24	1-8	.125	0-2	.000	0-0	.000	1	0	1	1.5	1	1	5	0	1	2	1.5	
SAMFORD	12/22/16		10	2-2	1.000	0-0	.000	3-3	1.000	0	1	1	1.4	2	1	0	0	1	7	2.0	
WESTERN CAROLINA	12/28/16		29	1-5	.200	0-1	.000	2-2	1.000	0	2	2	1.5	1	3	3	2	2	4	2.2	
at Mizzou	01/01/17		8	1-1	1.000	0-0	.000	1-1	1.000	0	0	0	1.4	0	0	0	0	1	3	2.2	
TEXAS A&M	1/5/17		4	1-1	1.000	0-0	.000	0-0	.000	0	1	1	1.3	1	0	1	0	1	2	2.2	
Totals			3	183	12-46	.261	1-10	.100	8-10	.800	6	14	20	1.3	15	7	21	3	11	33	2.2

OVERALL CAREER STATISTICS

Year	GP	GS	Min	Total			3-Point			Free-Throw			Rebounds							Pts	Avg				
				Avg	TFG	TFGA	.Pct	3FG	3FGA	.Pct	FT	FTA	.Pct	Off	Def	Tot	Avg	PF	FO			Ast	TO	Blk	Stl
2016-17	15	3	183	12.2	12	46	.261	1	10	.100	8	10	.800	6	14	20	1.3	15	0	7	21	3	11	33	2.2
TOTAL	15	3	183	12.2	12	46	.261	1	10	.100	8	10	.800	6	14	20	1.3	15	0	7	21	3	11	33	2.2

SEC CAREER STATISTICS

Year	GP	GS	Min	Total			3-Point			Free-Throw			Rebounds							Pts	Avg				
				Avg	TFG	TFGA	.Pct	3FG	3FGA	.Pct	FT	FTA	.Pct	Off	Def	Tot	Avg	PF	FO			Ast	TO	Blk	Stl
2016-17	2	0	12	6.0	2	2	1.000	0	0	.000	1	1	1.000	0	1	1	0.5	1	0	0	1	0	2	5	2.5
TOTAL	2	0	12	6.0	2	2	1.000	0	0	.000	1	1	1.000	0	1	1	0.5	1	0	0	1	0	2	5	2.5





#4 CALIYA ROBINSON

Forward • 6-3 • Sophomore • Marietta, Ga./McEachern HS

HIGHLIGHTS

- » Ranks 10th in the SEC in scoring, averaging 15.9 ppg
- » Saw her streak of 15-straight games in double figures come to an end at Missouri (1/1/17)
- » Ranks eighth on the SEC's career active blocked shots chart with 73
- » Is one of only four Lady Bulldogs since the year 2000 with at least three 20 pt., 10 reb. games in their careers, joining Tasha Humphrey, Christi Thomas and Kara Braxton
- » Set a new career-high with 30 points vs. Minnesota in the Junkanoo Jam, becoming the first UGA player since Tasha Humphrey in 2008 to score 30 or more points in a single game (32 vs. Florida in 2008)
- » Scored 24 points, 19 coming in the second half, vs. Mercer on Nov. 13
- » Led the team with 13 first-half points vs. Georgia Tech on her way to her first double-double this season
- » Knocked in the go-ahead shot with just over two minutes remaining to lift Georgia past Mercer -- that shot accounted for two of her 11 fourth-quarter points
- » 2016 SEC All-Freshman Team
- » Her 48 blocks last season were third-most in the SEC and the fifth-most by a Georgia freshman in school history

SEASON & CAREER HIGHS

POINTS

Season: 30 Minnesota (11/24/16)
 Career: 30 Minnesota (11/24/16)

REBOUNDS

Season: 11 Samford (12/23/16)
 Career: 11 2x, last - Samford (12/23/16)

ASSISTS

Season: 4 Texas A&M (1/5/17)
 Career: 4 Texas A&M (1/5/17)

BLOCKS

Season: 4 2X, last - Kenn. State (11/29/16)
 Career: 5 2X, last - Arkansas (2/25/16)

STEALS

Season: 4 BYU (11/16/16)
 Career: 4 BYU (11/16/16)

MINUTES

Season: 40 Furman (12/5/16)
 Career: 40 Furman (12/5/16)

MISCELLANEOUS STATS

DOUBLE-DIGIT POINTS

Season: 12 Career: 22

DOUBLE-DIGIT REBOUNDS

Season: 4 Career: 9

DOUBLE-DOUBLES

Season: 4 Career: 8

20-POINT GAMES

Season: 5 Career: 5

2016-17 GAME-BY-GAME

#04 Caliya Robinson

Opponent	Date	gs	min	Total		3-Pointers		Free throws		Rebounds				pf	a	t/o	blk	stl	pts	avg	
				fg-fga	pct	3fg-fga	pct	ft-fa	pct	off	def	tot	avg								
MERCER	11/13/16		32	10-13	.769	1-3	.333	3-4	.750	3	1	4	4.0	1	0	0	4	1	24	24.0	
BYU	11/16/16		21	4-8	.500	0-2	.000	2-2	1.000	1	5	6	5.0	2	2	0	0	4	10	17.0	
at Georgia Tech	11/20/16		25	7-13	.538	1-2	.500	0-1	.000	1	9	10	6.7	4	1	9	2	2	15	16.3	
vs Minnesota	11/24/16		33	14-27	.519	2-5	.400	0-0	.000	2	3	5	6.3	1	4	1	3	0	30	19.8	
vs USF	11/26/16	*	23	5-9	.556	0-1	.000	0-0	.000	1	0	1	5.2	5	0	1	3	0	10	17.8	
KENNESAW STATE	11/29/16	*	32	9-17	.529	1-1	1.000	6-9	.667	4	6	10	6.0	1	2	2	4	1	25	19.0	
at Oklahoma State	12/3/16	*	23	6-12	.500	1-2	.500	3-6	.500	0	2	2	5.4	3	0	0	0	2	16	18.6	
FURMAN	12/5/16	*	40	9-18	.500	2-4	.500	0-0	.000	2	8	10	6.0	4	3	3	1	1	20	18.8	
at Cincinnati	12/15/16	*	25	5-8	.625	0-1	.000	0-0	.000	2	4	6	6.0	4	3	1	2	2	10	17.8	
VIRGINIA	12/19/16	*	28	4-7	.571	0-0	.000	2-5	.400	1	8	9	6.3	2	2	3	1	2	10	17.0	
SAMFORD	12/22/16	*	36	10-17	.588	0-1	.000	4-6	.667	4	7	11	6.7	3	2	5	2	2	24	17.6	
at Mizzou	01/01/17	*	22	1-7	.143	0-1	.000	0-0	.000	0	3	3	6.4	0	1	2	0	1	2	16.3	
TEXAS A&M	1/5/17	*	32	5-10	.500	0-1	.000	1-3	.333	3	5	8	6.5	3	4	9	3	1	11	15.9	
Totals			9	372	89-166	.536	8-24	.333	21-36	.583	24	61	85	6.5	33	24	36	25	19	207	15.9

OVERALL CAREER STATISTICS

Year	GP	GS	Min	Avg	Total			3-Point			Free-Throw			Rebounds				PF	FO	Ast	TO	Blk	Stl	Pts	Avg
					TFG	TFGA	.Pct	3FG	3FGA	.Pct	FT	FTA	.Pct	Off	Def	Tot	Avg								
2015-16	28	1	543	19.4	98	204	.480	5	18	.278	22	38	.579	54	105	159	5.7	51	1	36	47	48	16	223	8.0
2016-17	13	9	372	28.6	89	166	.536	8	24	.333	21	36	.583	24	61	85	6.5	33	1	24	36	25	19	207	15.9
TOTAL	41	10	915	22.3	187	370	.505	13	42	.310	43	74	.581	78	166	244	6.0	84	2	60	83	73	35	430	10.5

SEC CAREER STATISTICS

Year	GP	GS	Min	Avg	Total			3-Point			Free-Throw			Rebounds				PF	FO	Ast	TO	Blk	Stl	Pts	Avg
					TFG	TFGA	.Pct	3FG	3FGA	.Pct	FT	FTA	.Pct	Off	Def	Tot	Avg								
2015-16	16	1	317	19.8	56	120	.467	4	8	.500	10	18	.556	26	58	84	5.3	29	0	19	32	27	10	126	7.9
2016-17	2	2	54	27.0	6	17	.353	0	2	.000	1	3	.333	3	8	11	5.5	3	0	5	11	3	2	13	6.5
TOTAL	18	3	371	20.6	62	137	.453	4	10	.400	11	21	.524	29	66	95	5.3	32	0	24	43	30	12	139	7.7





#11 PACHIS ROBERTS

Guard/Forward • 5-11 • RS-Senior • Powder Springs, Ga./Syracuse

HIGHLIGHTS

- » Has scored 58 points in the last three games combined
- » Georgia's leading scorer in two SEC games, averaging 14.5 points per game
- » Scored a career-high 29 points vs. Western Carolina (12/28), besting her previous career high, which came on the exact same date a year ago against Tennessee Tech (25 points).
- » Ranks 10th in the SEC in rebounding, averaging 7.3 boards per game
- » Fifth in the SEC in minutes played, averaging 33.9 mpg
- » All three of her career double-doubles have come this season
- » Has played 40 minutes three times during the 2016-17 campaign
- » Recorded first career double-double with 14 points and 11 rebounds in opener vs. SC State; the 11 rebounds against SC State were a career high at that time
- » Finished one rebound shy of another double-double with 19 pts. and nine rebounds vs. Mercer on Nov. 13
- » Tallied a steal, a layup and an assist in back-to-back-to-back possessions with under two minutes to go against Mercer
- » Scored in double figures in three of last five games last year

SEASON & CAREER HIGHS

POINTS

Season: 29 Western Carolina (12/28/16)
 Career: 29 Western Carolina (12/28/16)

REBOUNDS

Season: 14 Kenn. State (11/29/16)
 Career: 14 Kenn. State (11/29/16)

ASSISTS

Season: 6 2x, last-Kenn.State(11/29/16)
 Career: 6 3x, last-Kenn.State(11/29/16)

BLOCKS

Season: 2 3X, last W.Carolina (12/28/16)
 Career: 2 3X, last W.Carolina (12/28/16)

STEALS

Season: 6 Cincinnati
 Career: 6 3x, last-Kenn.State(11/29/16)

MINUTES

Season: 40 2x, Minnesota (11/24/16)
 Career: 40 2x, Minnesota (11/24/16)

MISCELLANEOUS STATS

DOUBLE-DIGIT POINTS

Season: 11 Career: 23

DOUBLE-DIGIT REBOUNDS

Season: 4 Career: 4

DOUBLE-DOUBLES

Season: 3 Career: 3

20-POINT GAMES

Season: 1 Career: 2

2016-17 GAME-BY-GAME

#11 Pachis Roberts

Opponent	Date	gs	min	Total		3-Pointers		Free throws		Rebounds				pf	a	t/o	blk	stl	pts	avg	
				fg-fga	pct	3fg-fga	pct	ft-fa	pct	off	def	tot	avg								
SOUTH CAROLINA STAT	11/11/16	*	37	5-12	.417	0-3	.000	4-4	1.000	9	2	11	11.0	2	2	2	0	1	14	14.0	
MERCER	11/13/16	*	40	5-14	.357	1-6	.167	8-10	.800	2	7	9	10.0	2	5	3	0	2	19	16.5	
BYU	11/16/16	*	25	4-7	.571	0-3	.000	4-5	.800	1	2	3	7.7	4	2	0	0	0	12	15.0	
at Georgia Tech	11/20/16	*	37	3-12	.250	1-5	.200	6-7	.857	3	1	4	6.8	2	3	6	2	1	13	14.5	
vs Minnesota	11/24/16	*	34	3-10	.300	0-2	.000	6-6	1.000	4	8	12	7.8	1	6	2	0	0	12	14.0	
vs USF	11/26/16	*	40	4-12	.333	1-3	.333	10-10	1.000	1	4	5	7.3	4	5	1	0	1	19	14.8	
KENNESAW STATE	11/29/16	*	32	3-6	.500	1-3	.333	1-6	.167	3	11	14	8.3	2	6	3	1	4	8	13.9	
at Oklahoma State	12/3/16	*	39	4-11	.364	0-3	.000	1-2	.500	2	1	3	7.6	2	1	6	0	0	9	13.3	
FURMAN	12/5/16	*	38	4-8	.500	3-5	.600	1-2	.500	1	6	7	7.6	3	5	1	2	3	12	13.1	
at Cincinnati	12/15/16	*	40	5-11	.455	1-3	.333	3-5	.600	4	4	8	7.6	2	2	3	0	6	14	13.2	
VIRGINIA	12/19/16	*	30	0-5	.000	0-1	.000	0-0	.000	3	3	6	7.5	2	3	3	0	1	0	12.0	
SAMFORD	12/22/16	*	19	1-8	.125	0-3	.000	1-1	1.000	3	1	4	7.2	4	1	2	1	0	3	11.3	
WESTERN CAROLINA	12/28/16	*	30	12-16	.750	1-2	.500	4-4	1.000	3	8	11	7.5	3	4	1	2	3	29	12.6	
at Mizzou	01/01/17	*	35	7-15	.467	2-5	.400	0-0	.000	3	4	7	7.4	4	1	3	0	3	16	12.9	
TEXAS A&M	1/5/17	*	32	6-13	.462	1-4	.250	0-0	.000	3	2	5	7.3	5	4	0	0	4	13	12.9	
Totals			15	508	66-160	.413	12-51	.235	49-62	.790	45	64	109	7.3	42	50	36	8	29	193	12.9

OVERALL CAREER STATISTICS

Year	GP	GS	Min	Total			3-Point			Free-Throw			Rebounds							Pts	Avg				
				Avg	TFG	TFGA	.Pct	3FG	3FGA	.Pct	FT	FTA	.Pct	Off	Def	Tot	Avg	PF	FO			Ast	TO	Blk	Stl
2012-13	16	0	155	9.7	18	44	.409	9	28	.231	12	16	.750	7	21	28	1.8	16	0	6	10	1	13	57	3.6
2014-15	26	3	342	13.2	35	100	.350	14	49	.286	21	36	.583	22	43	65	2.5	35	1	23	18	6	26	105	4.0
2015-16	23	10	521	22.7	58	150	.387	18	54	.333	28	40	.700	41	55	96	4.2	64	3	36	39	2	22	162	7.0
2016-17	15	15	508	33.9	66	160	.413	12	51	.235	49	62	.790	45	64	109	7.3	42	1	50	36	8	29	193	12.9
TOTAL	80	28	1526	19.1	177	454	.390	53	182	.291	110	154	.714	115	183	298	3.7	157	5	115	103	17	90	517	6.5

SEC CAREER STATISTICS

Year	GP	GS	Min	Total			3-Point			Free-Throw			Rebounds							Pts	Avg				
				Avg	TFG	TFGA	.Pct	3FG	3FGA	.Pct	FT	FTA	.Pct	Off	Def	Tot	Avg	PF	FO			Ast	TO	Blk	Stl
2014-15	12	3	199	16.6	19	60	.317	11	34	.324	6	13	.462	11	27	38	3.2	19	0	16	13	4	11	55	4.6
2015-16	16	7	369	23.1	41	104	.394	10	35	.286	24	35	.686	31	41	72	4.5	48	3	21	32	2	18	116	7.3
2016-17	2	2	67	33.5	13	28	.464	3	9	.333	0	0	.000	6	6	12	6.0	9	1	5	3	0	7	29	14.5
TOTAL	30	12	635	21.2	73	192	.380	24	78	.308	30	48	.625	48	74	122	4.1	76	4	42	48	6	36	200	6.7





#12 HALEY CLARK

Guard • 5-9 • Junior • Orlando, Fla./Edgewater HS

HIGHLIGHTS

- » Tallied a career-high seven assists in the team's last outing vs. Texas A&M (1/5)
- » Has started all 15 games this season after only starting four times the previous two years combined
- » Tied a career high with nine points in the opener vs. SC State -- all nine points came in the first half
- » Matched her career high with nine points vs. Mercer on Nov. 13
- » Took over starting point guard duties coming into this season
- » Averaged 24.5 minutes per game in two postseason games last year
- » Played in 29 of 31 games during the 2015-16 campaign

SEASON & CAREER HIGHS

POINTS

Season: 9 2X, last - Mercer (11/13/16)
 Career: 9 3X, last - Mercer (11/13/16)

REBOUNDS

Season: 8 Minnesota (11/24/16)
 Career: 8 Minnesota (11/24/16)

ASSISTS

Season: 7 Texas A&M (1/5/17)
 Career: 7 Texas A&M (1/5/17)

BLOCKS

Season: 1 2X, last - Texas A&M (1/5/17)
 Career: 1 9X, last - Texas A&M (1/5/17)

STEALS

Season: 3 2x, last - Ok State (12/3/16)
 Career: 3 4x, last - Ok State (12/3/16)

MINUTES

Season: 40 2x, last - Missouri (1/1/17)
 Career: 40 2x, last - Missouri (1/1/17)

MISCELLANEOUS STATS

DOUBLE-DIGIT POINTS

Season: xx Career: xx

DOUBLE-DIGIT REBOUNDS

Season: xx Career: xx

DOUBLE-DOUBLES

Season: xx Career: xx

20-POINT GAMES

Season: xx Career: xx

2016-17 GAME-BY-GAME

#12 Haley Clark

Opponent	Date	gs	min	Total		3-Pointers		Free throws		Rebounds				pf	a	t/o	blk	stl	pts	avg	
				fg-fga	pct	3fg-fga	pct	ft-fa	pct	off	def	tot	avg								
SOUTH CAROLINA STAT	11/11/16	*	37	4-10	.400	0-1	.000	1-2	.500	0	2	2	2.0	3	2	3	0	2	9	9.0	
MERCER	11/13/16	*	30	3-6	.500	1-1	1.000	2-4	.500	0	5	5	3.5	4	3	5	0	1	9	9.0	
BYU	11/16/16	*	34	1-5	.200	0-0	.000	1-1	1.000	0	2	2	3.0	3	1	4	0	0	3	7.0	
at Georgia Tech	11/20/16	*	37	0-5	.000	0-0	.000	1-2	.500	1	1	2	2.8	5	2	4	1	0	1	5.5	
vs Minnesota	11/24/16	*	37	1-3	.333	0-1	.000	3-4	.750	2	6	8	3.8	4	5	3	0	0	5	5.4	
vs USF	11/26/16	*	28	1-2	.500	0-0	.000	0-0	.000	0	5	5	4.0	5	5	4	0	3	2	4.8	
KENNESAW STATE	11/29/16	*	32	2-3	.667	0-0	.000	2-2	1.000	0	3	3	3.9	0	6	4	0	0	6	5.0	
at Oklahoma State	12/3/16	*	30	2-4	.500	0-0	.000	1-2	.500	0	1	1	3.5	4	3	2	0	3	5	5.0	
FURMAN	12/5/16	*	34	2-3	.667	0-0	.000	4-6	.667	0	4	4	3.6	2	6	2	0	0	8	5.3	
at Cincinnati	12/15/16	*	40	3-7	.429	0-0	.000	2-2	1.000	0	6	6	3.8	0	4	3	0	1	8	5.6	
VIRGINIA	12/19/16	*	19	0-2	.000	0-0	.000	0-0	.000	1	1	2	3.6	4	3	3	0	1	0	5.1	
SAMFORD	12/22/16	*	31	2-5	.400	0-0	.000	3-6	.500	0	1	1	3.4	4	1	3	0	2	7	5.3	
WESTERN CAROLINA	12/28/16	*	11	0-1	.000	0-0	.000	0-0	.000	0	0	0	3.2	5	1	3	0	1	0	4.8	
at Mizzou	01/01/17	*	40	1-8	.125	0-0	.000	4-4	1.000	0	1	1	3.0	3	4	6	0	2	6	4.9	
TEXAS A&M	1/5/17	*	35	1-3	.333	0-0	.000	5-8	.625	1	6	7	3.3	3	7	6	1	1	7	5.1	
Totals			15	475	23-67	.343	1-3	.333	29-43	.674	5	44	49	3.3	49	53	55	2	17	76	5.1

OVERALL CAREER STATISTICS

Year	GP	GS	Min	Total			3-Point			Free-Throw			Rebounds							Pts	Avg				
				Avg	TFG	TFGA	.Pct	3FG	3FGA	.Pct	FT	FTA	.Pct	Off	Def	Tot	Avg	PF	FO			Ast	TO	Blk	Stl
2014-15	25	3	403	16.1	14	46	.304	0	3	.000	22	27	.815	5	29	34	1.4	47	1	39	57	3	19	50	2.0
2015-16	29	1	334	11.5	14	42	.333	1	4	.250	13	22	.591	7	32	39	1.3	42	2	38	40	6	13	42	1.4
2016-17	15	15	475	31.7	23	67	.343	1	3	.333	29	43	.674	5	44	49	3.3	49	3	53	55	2	17	76	5.1
TOTAL	69	19	1212	17.6	51	155	.329	2	10	.200	64	92	.696	17	105	122	1.8	138	6	130	152	11	49	168	2.4

SEC CAREER STATISTICS

Year	GP	GS	Min	Total			3-Point			Free-Throw			Rebounds							Pts	Avg				
				Avg	TFG	TFGA	.Pct	3FG	3FGA	.Pct	FT	FTA	.Pct	Off	Def	Tot	Avg	PF	FO			Ast	TO	Blk	Stl
2014-15	10	3	195	19.5	7	18	.389	0	1	.000	16	20	.800	4	15	19	1.9	21	1	18	29	1	6	30	3.0
2015-16	14	0	92	6.6	2	9	.222	0	0	.000	8	14	.571	2	9	11	0.8	9	0	4	16	1	4	12	0.9
2016-17	2	2	75	37.5	2	11	.182	0	0	.000	9	12	.750	1	7	8	4.0	6	0	11	12	1	3	13	6.5
TOTAL	26	5	362	13.9	11	38	.289	0	1	.000	33	46	.717	7	31	38	1.5	36	1	33	57	3	13	55	2.1





#23 HALLE WASHINGTON

Forward • 6-2 • Senior • Bossier City, La./Parkway HS

HIGHLIGHTS

- » Saw her streak of 20-straight regular season starts come to an end vs. Samford (12/23)
- » Finished one point shy of tying her career high with 16 points vs. BYU, 10 coming in the second half
- » Hit 8-of-12 from the field, finished with a career-high five assists and had a hand in each of Georgia's first three baskets vs. BYU
- » Recorded a career-high 10 rebounds in the season-opener vs. SC State
- » Drew 10-straight starts to end the 2015-16 regular season

SEASON & CAREER HIGHS

POINTS

Season: 16 BYU (11/16/16)
 Career: 17 Florida (1/14/16)

REBOUNDS

Season: 10 SC State (11/11/16)
 Career: 10 SC State (11/11/16)

ASSISTS

Season: 5 BYU (11/16/16)
 Career: 5 BYU (11/16/16)

BLOCKS

Season: 2 Texas A&M (1/5/17)
 Career: 3 3X, last - Ole Miss (2/9/14)

STEALS

Season: 2 Minnesota (11/24/16)
 Career: 4 Florida (2/12/15)

MINUTES

Season: 28 BYU (11/16/16)
 Career: 37 Kennesaw St. (12/15/13)

MISCELLANEOUS STATS

DOUBLE-DIGIT POINTS

Season: 1 Career: 5

DOUBLE-DIGIT REBOUNDS

Season: 1 Career: 1

DOUBLE-DOUBLES

Season: xx Career: xx

20-POINT GAMES

Season: xx Career: xx

2016-17 GAME-BY-GAME

#23 Halle Washington

Opponent	Date	gs	min	Total		3-Pointers		Free throws		Rebounds				pf	a	t/o	blk	stl	pts	avg	
				fg-fga	pct	3fg-fga	pct	ft-fa	pct	off	def	tot	avg								
SOUTH CAROLINA STAT	11/11/16	*	19	2-8	.250	0-0	.000	4-6	.667	6	4	10	10.0	2	1	1	1	0	8	8.0	
MERCER	11/13/16	*	15	3-3	1.000	0-0	.000	0-0	.000	0	5	5	7.5	4	0	2	1	1	6	7.0	
BYU	11/16/16	*	28	8-12	.667	0-0	.000	0-0	.000	1	2	3	6.0	3	5	1	1	0	16	10.0	
at Georgia Tech	11/20/16	*	15	1-1	1.000	0-0	.000	0-0	.000	2	1	3	5.3	4	0	1	0	1	2	8.0	
vs Minnesota	11/24/16	*	26	2-5	.400	0-0	.000	0-0	.000	1	3	4	5.0	4	1	2	0	2	4	7.2	
vs USF	11/26/16	*	8	2-3	.667	0-0	.000	0-2	.000	0	1	1	4.3	1	0	0	0	0	4	6.7	
KENNESAW STATE	11/29/16	*	4	2-2	1.000	0-0	.000	0-0	.000	0	0	0	3.7	1	0	0	0	0	4	6.3	
at Oklahoma State	12/3/16	*	23	1-5	.200	0-0	.000	0-0	.000	0	3	3	3.6	5	2	0	0	0	2	5.8	
FURMAN	12/5/16	*	12	3-5	.600	0-0	.000	2-4	.500	0	0	0	3.2	4	0	2	1	0	8	6.0	
at Cincinnati	12/15/16	*	12	0-3	.000	0-0	.000	0-0	.000	0	0	0	2.9	4	1	4	0	0	0	5.4	
VIRGINIA	12/19/16	*	13	2-4	.500	0-0	.000	2-6	.333	0	2	2	2.8	2	0	0	1	0	6	5.5	
SAMFORD	12/22/16		14	2-4	.500	0-0	.000	0-2	.000	1	0	1	2.7	1	2	2	1	0	4	5.3	
WESTERN CAROLINA	12/28/16	*	17	1-3	.333	0-0	.000	0-0	.000	1	1	2	2.6	4	0	3	0	1	2	5.1	
at Mizzou	01/01/17		17	1-2	.500	0-0	.000	0-0	.000	0	1	1	2.5	2	0	2	0	0	2	4.9	
TEXAS A&M	1/5/17		14	2-4	.500	0-0	.000	0-0	.000	0	2	2	2.5	3	0	1	2	0	4	4.8	
Totals			12	237	32-64	.500	0-0	.000	8-20	.400	12	25	37	2.5	44	12	21	8	5	72	4.8

OVERALL CAREER STATISTICS

Year	GP	GS	Min	Total			3-Point			Free-Throw			Rebounds							Pts	Avg				
				Avg	TFG	TFGA	.Pct	3FG	3FGA	.Pct	FT	FTA	.Pct	Off	Def	Tot	Avg	PF	FO			Ast	TO	Blk	Stl
2013-14	32	1	502	15.7	51	125	.408	0	0	.000	29	64	.453	42	82	124	3.9	114	8	12	55	25	17	131	4.1
2014-15	27	5	395	14.6	26	86	.302	0	0	.000	14	33	.424	33	51	84	3.1	68	3	12	43	18	16	66	2.4
2015-16	26	10	363	14.0	38	100	.380	0	3	.000	20	30	.667	17	36	53	2.0	73	1	9	27	11	8	96	3.7
2016-17	15	12	237	15.8	32	64	.500	0	0	.000	8	20	.400	12	25	37	2.5	44	1	12	21	8	5	72	4.8
TOTAL	100	28	1497	15.0	147	375	.392	0	3	.000	71	147	.483	104	194	298	3.0	299	13	45	146	62	46	365	3.7

SEC CAREER STATISTICS

Year	GP	GS	Min	Total			3-Point			Free-Throw			Rebounds							Pts	Avg				
				Avg	TFG	TFGA	.Pct	3FG	3FGA	.Pct	FT	FTA	.Pct	Off	Def	Tot	Avg	PF	FO			Ast	TO	Blk	Stl
2013-14	16	0	224	14.0	20	44	.455	0	0	.000	6	14	.429	11	36	47	2.9	57	4	7	24	12	5	46	2.9
2014-15	16	3	269	16.8	21	58	.362	0	0	.000	10	21	.476	26	31	57	3.6	46	2	7	31	11	9	52	3.3
2015-16	16	9	223	13.9	22	57	.386	0	2	.000	9	12	.750	11	23	34	2.1	47	1	7	16	6	4	53	3.3
2016-17	2	0	31	15.5	3	6	.500	0	0	.000	0	0	.000	0	3	3	1.5	5	0	0	3	2	0	6	3.0
TOTAL	50	12	747	14.9	66	165	.400	0	2	.000	25	47	.532	48	93	141	2.8	155	7	21	74	31	18	157	3.1





#24 SIMONE COSTA

Guard • 5-10 • Junior • Lisbon, Portugal/Independence (Kan.) Community College

HIGHLIGHTS

- » Coming off perhaps her best game of the year in a 13-point effort vs. Texas A&M (1/5)
- » Hit a crucial 3-pointer on UGA's first possession of the fourth quarter that put the Lady Dogs up by 10 against A&M
- » Scored a career-high 14 pts. vs. Western Carolina (12/28)
- » Plays mostly at the No. 2 spot but is also the team's backup point guard
- » Scored a then career-high 11 pts., including eight in the second quarter, vs. Cincinnati
- » Made first career start on the road against Oklahoma State
- » Tallied six second-half assists vs. BYU
- » Had an impressive Georgia debut, hitting double-figures in scoring with 10 points vs. SC State; seven of those points came in the second half
- » A native of Lisbon, Portugal

SEASON & CAREER HIGHS

POINTS

Season: 14 Western Carolina (12/28/16)
 Career: 14 Western Carolina (12/28/16)

REBOUNDS

Season: 5 Missouri (1/1/17)
 Career: 5 Missouri (1/1/17)

ASSISTS

Season: 6 BYU (11/16/16)
 Career: 6 BYU (11/16/16)

BLOCKS

Season: 2 GA Tech (11/20/16)
 Career: 2 GA Tech (11/20/16)

STEALS

Season: 2 4x, last Texas A&M (1/5/17)
 Career: 2 4x, last Texas A&M (1/5/17)

MINUTES

Season: 40 Western Carolina (12/28/16)
 Career: 40 Western Carolina (12/28/16)

MISCELLANEOUS STATS

DOUBLE-DIGIT POINTS

Season: 4 Career: 4

DOUBLE-DIGIT REBOUNDS

Season: xx Career: xx

DOUBLE-DOUBLES

Season: xx Career: xx

20-POINT GAMES

Season: xx Career: xx

2016-17 GAME-BY-GAME

#24 Simone Costa

Opponent	Date	gs	min	Total		3-Pointers		Free throws		Rebounds				pf	a	t/o	blk	stl	pts	avg	
				fg-fga	pct	3fg-fga	pct	ft-fa	pct	off	def	tot	avg								
SOUTH CAROLINA STAT	11/11/16		26	3-8	.375	1-6	.167	3-3	1.000	0	1	1	1.0	2	3	2	0	1	10	10.0	
MERCER	11/13/16		18	0-3	.000	0-2	.000	0-0	.000	0	2	2	1.5	3	2	4	0	2	0	5.0	
BYU	11/16/16		23	0-2	.000	0-0	.000	3-6	.500	0	2	2	1.7	0	6	1	0	0	3	4.3	
at Georgia Tech	11/20/16		15	1-5	.200	0-2	.000	0-0	.000	1	2	3	2.0	1	1	1	2	0	2	3.8	
vs Minnesota	11/24/16		17	3-4	.750	2-3	.667	0-0	.000	0	0	0	1.6	3	0	3	0	0	8	4.6	
vs USF	11/26/16		27	2-5	.400	0-2	.000	2-2	1.000	2	0	2	1.7	2	1	1	0	1	6	4.8	
KENNESAW STATE	11/29/16		28	1-3	.333	0-2	.000	1-2	.500	1	2	3	1.9	2	2	4	0	2	3	4.6	
at Oklahoma State	12/3/16	*	27	1-5	.200	1-3	.333	0-0	.000	0	0	0	1.6	0	2	3	0	1	3	4.4	
FURMAN	12/5/16	*	22	1-2	.500	1-1	1.000	3-4	.750	1	1	2	1.7	4	2	2	1	0	6	4.6	
at Cincinnati	12/15/16	*	29	3-11	.273	2-7	.286	3-4	.750	1	3	4	1.9	4	2	0	1	2	11	5.2	
VIRGINIA	12/19/16	*	34	1-7	.143	1-4	.250	3-4	.750	0	1	1	1.8	0	1	3	0	0	6	5.3	
SAMFORD	12/22/16	*	34	0-5	.000	0-1	.000	2-2	1.000	0	1	1	1.8	1	0	2	0	1	2	5.0	
WESTERN CAROLINA	12/28/16	*	40	5-9	.556	2-3	.667	2-3	.667	1	3	4	1.9	0	4	2	0	1	14	5.7	
at Mizzou	01/01/17	*	26	2-8	.250	1-3	.333	1-2	.500	1	4	5	2.1	1	2	1	0	1	6	5.7	
TEXAS A&M	1/5/17	*	34	5-10	.500	2-5	.400	1-2	.500	1	2	3	2.2	1	1	1	0	2	13	6.2	
Totals			8	400	28-87	.322	13-44	.295	24-34	.706	9	24	33	2.2	24	29	30	4	14	93	6.2

OVERALL CAREER STATISTICS

Year	GP	GS	Min	Avg	Total			3-Point			Free-Throw			Rebounds				PF	FO	Ast	TO	Blk	Stl	Pts	Avg
					TFG	TFGA	.Pct	3FG	3FGA	.Pct	FT	FTA	.Pct	Off	Def	Tot	Avg								
2016-17	15	8	400	26.7	28	87	.322	13	44	.295	24	34	.706	9	24	33	2.2	24	0	29	30	4	14	93	6.2
TOTAL	15	8	400	26.7	28	87	.322	13	44	.295	24	34	.706	9	24	33	2.2	24	0	29	30	4	14	93	6.2

SEC CAREER STATISTICS

Year	GP	GS	Min	Avg	Total			3-Point			Free-Throw			Rebounds				PF	FO	Ast	TO	Blk	Stl	Pts	Avg
					TFG	TFGA	.Pct	3FG	3FGA	.Pct	FT	FTA	.Pct	Off	Def	Tot	Avg								
2016-17	2	2	60	30.0	7	18	.389	3	8	.375	2	4	.500	2	6	8	4.0	2	0	3	2	0	3	19	9.5
TOTAL	2	2	60	30.0	7	18	.389	3	8	.375	2	4	.500	2	6	8	4.0	2	0	3	2	0	3	19	9.5





#25 ARI HENDERSON

Guard • 5-7 • Freshman • Chamblee, Ga./Chamblee High School

HIGHLIGHTS

- » Walk-on who joined the team in October
- » Hit the first field goal of her career in the fourth quarter against Western Carolina (12/28)
- » Scored first points of Lady Bulldog career off three free-throws late in the game against Kennesaw State

SEASON & CAREER HIGHS

POINTS

Season: 3 Kenn. State (11/29/16)
 Career: 3 Kenn. State (11/29/16)

REBOUNDS

Season: 1 BYU (11/16/16)
 Career: 1 BYU (11/16/16)

ASSISTS

Season: NA
 Career: NA

BLOCKS

Season: NA
 Career: NA

STEALS

Season: 1 Western Carolina (12/28/16)
 Career: 1 Western Carolina (12/28/16)

MINUTES

Season: 4 Western Carolina (12/28/16)
 Career: 4 Western Carolina (12/28/16)

MISCELLANEOUS STATS

DOUBLE-DIGIT POINTS

Season: xx Career: xx

DOUBLE-DIGIT REBOUNDS

Season: xx Career: xx

DOUBLE-DOUBLES

Season: xx Career: xx

20-POINT GAMES

Season: xx Career: xx

2016-17 GAME-BY-GAME

#25 Ari Henderson

Opponent	Date	gs	min	Total		3-Pointers		Free throws		Rebounds				pf	a	t/o	blk	stl	pts	avg
				fg-fga	pct	3fg-fga	pct	ft-fa	pct	off	def	tot	avg							
SOUTH CAROLINA STAT	11/11/16	1	0-0	.000	0-0	.000	0-0	.000	0-0	.000	0	0	0	0.0	1	0	0	0	0	0.0
BYU	11/16/16	1	0-1	.000	0-0	.000	0-0	.000	0-0	.000	0	1	1	0.5	0	0	0	0	0	0.0
KENNESAW STATE	11/29/16	3	0-0	.000	0-0	.000	0-0	.000	3-4	.750	0	0	0	0.3	0	0	0	0	3	1.0
at Oklahoma State	12/3/16	1	0-0	.000	0-0	.000	0-0	.000	0-0	.000	0	0	0	0.3	0	0	0	0	0	0.8
WESTERN CAROLINA	12/28/16	4	1-2	.500	0-0	.000	0-0	.000	0-0	.000	0	0	0	0.2	0	0	0	1	2	1.0
Totals		0	10	1-3	.333	0-0	.000	3-4	.750	0	1	1	0.2	1	0	0	0	1	5	1.0

OVERALL CAREER STATISTICS

Year	GP	GS	Min	Total			3-Point			Free-Throw			Rebounds							Pts	Avg				
				Avg	TFG	TFGA .Pct	3FG	3FGA .Pct	FT	FTA	.Pct	Off	Def	Tot	Avg	PF	FO	Ast	TO			Blk	Stl		
2016-17	5	0	10	2.0	1	3	.333	0	0	.000	3	4	.750	0	1	1	0.2	1	0	0	0	0	1	5	1.0
TOTAL	5	0	10	2.0	1	3	.333	0	0	.000	3	4	.750	0	1	1	0.2	1	0	0	0	0	1	5	1.0

SEC CAREER STATISTICS

Year	GP	GS	Min	Total			3-Point			Free-Throw			Rebounds							Pts	Avg				
				Avg	TFG	TFGA .Pct	3FG	3FGA .Pct	FT	FTA	.Pct	Off	Def	Tot	Avg	PF	FO	Ast	TO			Blk	Stl		
2016-17																									
TOTAL																									





#33 MACKENZIE ENGRAM

Forward • 6-2 • Junior • Powder Springs, Ga./Hillgrove HS

HIGHLIGHTS

- » 2016 AllState Good Works Team nominee
- » Scored 19 points in Georgia's win against Texas A&M (1/5)
- » Brought down a career-high 12 rebounds on the road at Oklahoma State
- » Scored a career-high 23 points on her 21st Birthday in a win vs. Kennesaw State
- » Had a then career-high 21-point effort against BYU, scoring 16 first-half points
- » Made the most of her return to the lineup, scoring 15 points in the season opener vs. SC State
- » Followed with a solid outing vs. Mercer with eight points and eight rebs. vs. the Bears
- » Had high hopes after a stellar freshman campaign, but was forced to miss the last 15 games last year recovering from an illness known as Pericarditis
- » Started the first 14 games of the 2015-16 season and played in 16 games total
- » 2015 SEC All-Freshman Team selection

SEASON & CAREER HIGHS

POINTS

Season: 23 Kenn. State (11/29/16)
 Career: 23 Kenn. State (11/29/16)

REBOUNDS

Season: 12 Ok State (12/3/16)
 Career: 12 Ok State (12/3/16)

ASSISTS

Season: 3 2X, last - Kenn. State (11/29/16)
 Career: 3 5X, last - Kenn. State (11/29/16)

BLOCKS

Season: 2 2x, last W. Carolina (12/28/16)
 Career: 4 Mississippi St. (1/2/15)

STEALS

Season: 3 4x, last Texas A&M (1/5/17)
 Career: 3 4x, last Texas A&M (1/5/17)

MINUTES

Season: 38 Virginia (12/19/16)
 Career: 38 2x, last - Virginia (12/19/16)

MISCELLANEOUS STATS

DOUBLE-DIGIT POINTS

Season: 8 Career: 25

DOUBLE-DIGIT REBOUNDS

Season: 1 Career: 3

DOUBLE-DOUBLES

Season: xx Career: 2

20-POINT GAMES

Season: 2 Career: 3

2016-17 GAME-BY-GAME

#33 Mackenzie Engram

Opponent	Date	gs	min	Total		3-Pointers		Free throws		Rebounds				pf	a	t/o	blk	stl	pts	avg	
				fg-fga	pct	3fg-fga	pct	ft-fa	pct	off	def	tot	avg								
SOUTH CAROLINA STAT	11/11/16	*	34	7-12	.583	0-2	.000	1-3	.333	3	4	7	7.0	2	3	4	1	1	15	15.0	
MERCER	11/13/16	*	29	2-9	.222	0-2	.000	4-4	1.000	0	8	8	7.5	3	0	3	0	1	8	11.5	
BYU	11/16/16	*	31	8-13	.615	3-5	.600	2-2	1.000	2	3	5	6.7	1	1	3	1	2	21	14.7	
at Georgia Tech	11/20/16	*	34	2-6	.333	0-1	.000	1-2	.500	0	6	6	6.5	1	1	3	0	3	5	12.3	
vs Minnesota	11/24/16	*	18	1-7	.143	0-0	.000	0-0	.000	2	2	4	6.0	4	2	1	0	0	2	10.2	
vs USF	11/26/16		34	6-15	.400	1-4	.250	4-4	1.000	3	2	5	5.8	4	1	0	0	0	17	11.3	
KENNESAW STATE	11/29/16		32	10-15	.667	2-3	.667	1-1	1.000	3	5	8	6.1	3	3	4	2	3	23	13.0	
at Oklahoma State	12/3/16		27	3-10	.300	0-4	.000	2-2	1.000	2	10	12	6.9	2	0	2	1	2	8	12.4	
FURMAN	12/5/16		28	4-14	.286	1-4	.250	2-2	1.000	0	2	2	6.3	2	2	1	0	1	11	12.2	
at Cincinnati	12/15/16		30	4-8	.500	0-0	.000	0-0	.000	2	4	6	6.3	3	2	3	2	2	8	11.8	
VIRGINIA	12/19/16		38	8-15	.533	2-4	.500	0-2	.000	2	2	4	6.1	1	1	1	0	2	18	12.4	
SAMFORD	12/22/16	*	26	2-8	.250	1-3	.333	1-2	.500	3	4	7	6.2	4	2	1	0	2	6	11.8	
WESTERN CAROLINA	12/28/16	*	33	5-9	.556	1-1	1.000	3-7	.429	0	9	9	6.4	2	1	1	2	3	14	12.0	
at Mizzou	01/01/17	*	19	0-1	.000	0-1	.000	3-4	.750	2	3	5	6.3	4	0	0	0	0	3	11.4	
TEXAS A&M	1/5/17	*	34	7-14	.500	0-1	.000	5-6	.833	2	2	4	6.1	2	0	0	0	3	19	11.9	
Totals			9	447	69-156	.442	11-35	.314	29-41	.707	26	66	92	6.1	38	19	27	9	25	178	11.9

OVERALL CAREER STATISTICS

Year	GP	GS	Min	Total			3-Point			Free-Throw			Rebounds				PF	FO	Ast	TO	Blk	Stl	Pts	Avg	
				Avg	TFG	TFGA	.Pct	3FG	3FGA	.Pct	FT	FTA	.Pct	Off	Def	Tot									Avg
2014-15	31	7	623	20.1	90	204	.441	15	42	.357	43	54	.796	56	82	138	4.5	66	2	18	63	20	22	238	7.7
2015-16	16	14	390	24.4	52	138	.377	9	33	.273	18	32	.563	29	58	87	5.4	40	2	14	26	8	12	131	8.2
2016-17	14	8	413	29.5	62	142	.437	11	34	.324	24	35	.686	24	64	88	6.3	36	0	19	27	9	22	159	11.4
TOTAL	61	29	1426	23.4	204	484	.421	35	109	.321	85	121	.702	109	204	313	5.1	142	4	51	116	37	56	528	8.7

SEC CAREER STATISTICS

Year	GP	GS	Min	Total			3-Point			Free-Throw			Rebounds				PF	FO	Ast	TO	Blk	Stl	Pts	Avg	
				Avg	TFG	TFGA	.Pct	3FG	3FGA	.Pct	FT	FTA	.Pct	Off	Def	Tot									Avg
2014-15	16	5	333	20.8	48	105	.457	11	27	.407	16	22	.727	25	47	72	4.5	39	2	11	38	16	9	123	7.7
2015-16	3	1	51	17.0	3	17	.176	1	7	.143	1	4	.250	1	3	4	1.3	6	0	2	5	0	2	8	2.7
2016-17	1	1	19	19.0	0	1	.000	0	1	.000	3	4	.750	2	3	5	5.0	4	0	0	0	0	0	3	3.0
TOTAL	20	7	403	20.2	51	123	.415	12	35	.343	20	30	.667	28	53	81	4.1	49	2	13	43	16	11	134	6.7





University of Georgia Basketball
Georgia Combined Team Statistics (as of Jan 06, 2017)
All games



RECORD:	OVERALL	HOME	AWAY	NEUTRAL
ALL GAMES	9-6	7-2	1-3	1-1
CONFERENCE	1-1	1-0	0-1	0-0
NON-CONFERENCE	8-5	6-2	1-2	1-1

#	Player	gp-gs	min	avg	Total			3-Point		F-Throw		Rebounds			pf	dq	a	to	blk	stl	pts	avg
					fg-fga	fg%	3fg-fga	3fg%	ft-fa	ft%	off	def	tot	avg								
04	Caliya Robinson	13-9	372	28.6	89-166	.536	8-24	.333	21-36	.583	24	61	85	6.5	33	1	24	36	25	19	207	15.9
11	Pachis Roberts	15-15	508	33.9	66-160	.413	12-51	.235	49-62	.790	45	64	109	7.3	42	1	50	36	8	29	193	12.9
33	Mackenzie Engram	15-9	447	29.8	69-156	.442	11-35	.314	29-41	.707	26	66	92	6.1	38	0	19	27	9	25	178	11.9
24	Simone Costa	15-8	400	26.7	28-87	.322	13-44	.295	24-34	.706	9	24	33	2.2	24	0	29	30	4	14	93	6.2
01	Shanea Armbrister	15-4	368	24.5	33-92	.359	6-32	.188	13-20	.650	25	39	64	4.3	21	0	31	16	0	11	85	5.7
12	Haley Clark	15-15	475	31.7	23-67	.343	1-3	.333	29-43	.674	5	44	49	3.3	49	3	53	55	2	17	76	5.1
23	Halle Washington	15-12	237	15.8	32-64	.500	0-0	.000	8-20	.400	12	25	37	2.5	44	1	12	21	8	5	72	4.8
03	Stephanie Paul	15-3	183	12.2	12-46	.261	1-10	.100	8-10	.800	6	14	20	1.3	15	0	7	21	3	11	33	2.2
25	Ari Henderson	5-0	10	2.0	1-3	.333	0-0	.000	3-4	.750	0	1	1	0.2	1	0	0	0	0	1	5	1.0
Team											26	31	57				6					
Total.....		15	3000		353-841	.420	52-199	.261	184-270	.681	178	369	547	36.5	267	6	225	248	59	132	942	62.8
Opponents.....		15	2999		312-849	.367	74-246	.301	175-257	.681	200	343	543	36.2	261	-	159	273	27	114	873	58.2

TEAM STATISTICS	UGA	OPP	Date	Opponent	Score	Att.
SCORING	942	873	11/11/16	SOUTH CAROLINA STATE	w 64-50	2864
Points per game	62.8	58.2	11/13/16	MERCER	w 72-64	2497
Scoring margin	+4.6	-	11/16/16	BYU	w 81-51	2239
FIELD GOALS-ATT	353-841	312-849	11/20/16	at Georgia Tech	L 45-52	2206
Field goal pct	.420	.367	11/24/16	vs Minnesota	w 70-58	229
3 POINT FG-ATT	52-199	74-246	11/26/16	vs USF	L 65-81	543
3-point FG pct	.261	.301	11/29/16	KENNESAW STATE	w 82-40	2056
3-pt FG made per game	3.5	4.9	12/3/16	at Oklahoma State	L 51-71	2497
FREE THROWS-ATT	184-270	175-257	12/5/16	FURMAN	w 67-62	2078
Free throw pct	.681	.681	12/15/16	at Cincinnati	w 51-48	569
F-Throws made per game	12.3	11.7	12/19/16	VIRGINIA	L 43-66	2631
REBOUNDS	547	543	12/22/16	SAMFORD	L 59-65	2509
Rebounds per game	36.5	36.2	12/28/16	WESTERN CAROLINA	w 78-43	2754
Rebounding margin	+0.3	-	* 01/01/17	at Mizzou	L 45-63	3879
ASSISTS	225	159	* 1/5/17	TEXAS A&M	w 69-59	2222
Assists per game	15.0	10.6				
TURNOVERS	248	273				
Turnovers per game	16.5	18.2				
Turnover margin	+1.7	-				
Assist/turnover ratio	0.9	0.6				
STEALS	132	114				
Steals per game	8.8	7.6				
BLOCKS	59	27				
Blocks per game	3.9	1.8				
ATTENDANCE	21850	9923				
Home games-Avg/Game	9-2428	4-2288				
Neutral site-Avg/Game	-	2-386				

* - Conference game

Score by Periods	1st	2nd	3rd	4th	Totals
Georgia	211	258	249	224	942
Opponents	219	191	230	233	873





University of Georgia Basketball
Georgia Combined Team Statistics (as of Jan 06, 2017)
Conference games



RECORD:	OVERALL	HOME	AWAY	NEUTRAL
ALL GAMES	1-1	1-0	0-1	0-0
CONFERENCE	1-1	1-0	0-1	0-0
NON-CONFERENCE	0-0	0-0	0-0	0-0

#	Player	gp-gs	min	avg	Total		3-Point		F-Throw		Rebounds				pf	dq	a	to	blk	stl	pts	avg
					fg-fga	fg%	3fg-fga	3fg%	ft-fa	ft%	off	def	tot	avg								
11	Pachis Roberts	2-2	67	33.5	13-28	.464	3-9	.333	0-0	.000	6	6	12	6.0	9	1	5	3	0	7	29	14.5
33	Mackenzie Ingram	2-2	53	26.5	7-15	.467	0-2	.000	8-10	.800	4	5	9	4.5	6	0	0	0	0	3	22	11.0
24	Simone Costa	2-2	60	30.0	7-18	.389	3-8	.375	2-4	.500	2	6	8	4.0	2	0	3	2	0	3	19	9.5
12	Haley Clark	2-2	75	37.5	2-11	.182	0-0	.000	9-12	.750	1	7	8	4.0	6	0	11	12	1	3	13	6.5
04	Caliya Robinson	2-2	54	27.0	6-17	.353	0-2	.000	1-3	.333	3	8	11	5.5	3	0	5	11	3	2	13	6.5
01	Shanea Armbrister	2-0	48	24.0	3-15	.200	1-7	.143	0-0	.000	0	6	6	3.0	2	0	0	2	0	1	7	3.5
23	Halle Washington	2-0	31	15.5	3-6	.500	0-0	.000	0-0	.000	0	3	3	1.5	5	0	0	3	2	0	6	3.0
03	Stephanie Paul	2-0	12	6.0	2-2	1.000	0-0	.000	1-1	1.000	0	1	1	0.5	1	0	0	1	0	2	5	2.5
Team											2	1	3					1				
Total.....		2	400		43-112	.384	7-28	.250	21-30	.700	18	43	61	30.5	34	1	24	35	6	21	114	57.0
Opponents.....		2	400		46-115	.400	5-26	.192	25-30	.833	26	54	80	40.0	30	-	23	40	3	17	122	61.0

TEAM STATISTICS	UGA	OPP	Date	Opponent	Score	Att.
SCORING	114	122	* 01/01/17	at Mizzou	L 45-63	3879
Points per game	57.0	61.0	* 1/5/17	TEXAS A&M	W 69-59	2222
Scoring margin	-4.0	-	* - Conference game			
FIELD GOALS-ATT	43-112	46-115				
Field goal pct	.384	.400				
3 POINT FG-ATT	7-28	5-26				
3-point FG pct	.250	.192				
3-pt FG made per game	3.5	2.5				
FREE THROWS-ATT	21-30	25-30				
Free throw pct	.700	.833				
F-Throws made per game	10.5	12.5				
REBOUNDS	61	80				
Rebounds per game	30.5	40.0				
Rebounding margin	-9.5	-				
ASSISTS	24	23				
Assists per game	12.0	11.5				
TURNOVERS	35	40				
Turnovers per game	17.5	20.0				
Turnover margin	+2.5	-				
Assist/turnover ratio	0.7	0.6				
STEALS	21	17				
Steals per game	10.5	8.5				
BLOCKS	6	3				
Blocks per game	3.0	1.5				
ATTENDANCE	2222	3879				
Home games-Avg/Game	1-2222	1-3879				
Neutral site-Avg/Game	-	0-0				

Score by Periods	1st	2nd	3rd	4th	Totals
Georgia	31	38	16	29	114
Opponents	29	27	38	28	122





University of Georgia Basketball
Georgia Team Game-by-Game Comparison (as of Jan 06, 2017)
All games



Opponent	1st	2nd	Score	Mar	Total FG	FG Pct	3-Pointers	3FG Pct	Free Throws	FT Pct	Rebounds	Assist	T/Over	Block	Steal	Fouls
SOUTH CAROLINA STATE	36/21	28/29	64-50	+14	24-68/18-56	.353/.321	3-21/5-21	.143/.238	13-18/9-16	.722/.563	53/34 +19	13/7	17/17	2/4	6/7	15/17
MERCER	24/30	48/34	72-64	+8	26-56/23-62	.464/.371	3-17/5-13	.176/.385	17-23/13-19	.739/.684	43/29 +14	18/11	20/14	5/1	10/9	18/20
BYU	32/21	49/30	81-51	+30	31-58/17-46	.534/.370	4-13/3-17	.308/.176	15-21/14-20	.714/.700	31/31 -	19/10	12/24	2/3	7/10	17/21
Georgia Tech	23/28	22/24	45-52	(7)	16-50/19-57	.320/.333	3-13/4-17	.231/.235	10-14/10-22	.714/.455	42/33 +9	12/12	27/16	7/7	8/11	19/20
Minnesota	36/24	34/34	70-58	+12	27-64/19-70	.422/.271	4-14/3-21	.286/.143	12-16/17-24	.750/.708	45/47 (2)	23/8	13/14	3/0	3/2	21/19
USF	31/34	34/47	65-81	(16)	22-54/26-59	.407/.441	3-12/11-25	.250/.440	18-20/18-26	.900/.692	28/39 (11)	13/14	9/12	3/2	5/3	26/16
KENNESAW STATE	44/12	38/28	82-40	+42	32-55/15-54	.582/.278	4-10/7-16	.400/.438	14-24/3-6	.583/.500	44/24 +20	24/6	19/24	8/0	12/14	12/20
Oklahoma State	20/38	31/33	51-71	(20)	21-54/26-62	.389/.419	2-12/8-17	.167/.471	7-12/11-15	.583/.733	27/46 (19)	10/17	13/15	1/0	10/7	16/11
FURMAN	31/38	36/24	67-62	+5	24-55/20-54	.436/.370	7-16/5-19	.438/.263	12-18/17-22	.667/.773	32/39 (7)	18/8	14/20	5/0	5/4	21/14
Cincinnati	26/26	25/22	51-48	+3	20-57/15-48	.351/.313	3-12/5-15	.250/.333	8-11/13-21	.727/.619	35/38 (3)	14/8	18/22	5/1	15/8	20/17
VIRGINIA	24/32	19/34	43-66	(23)	16-51/27-62	.314/.435	3-13/3-10	.231/.300	8-19/9-11	.421/.818	35/42 (7)	12/13	20/16	2/2	8/12	12/15
SAMFORD	31/27	28/38	59-65	(6)	21-55/23-50	.382/.460	1-9/6-15	.111/.400	16-24/13-16	.667/.813	39/29 +10	10/13	16/16	4/2	9/5	20/21
WESTERN CAROLINA	42/23	36/20	78-43	+35	30-52/18-54	.577/.333	5-9/4-14	.556/.286	13-20/3-9	.650/.333	32/32 -	15/9	15/23	6/2	13/5	16/20
Mizzou	29/33	16/30	45-63	(18)	16-53/23-51	.302/.451	4-15/5-17	.267/.294	9-11/12-14	.818/.857	28/37 (9)	8/14	16/15	0/2	9/10	15/8
TEXAS A&M	40/23	29/36	69-59	+10	27-59/23-64	.458/.359	3-13/0-9	.231/.000	12-19/13-16	.632/.813	33/43 (10)	16/9	19/25	6/1	12/7	19/22

Note: Game totals are displayed in the format TEAM/OPPONENT for each category





University of Georgia Basketball
Georgia Player High/Low Analysis (as of Jan 06, 2017)
All games



Georgia - INDIVIDUAL GAME HIGHS

Points	30		Caliya Robinson vs Minnesota (11/24/16)
	29		Pachis Roberts vs Western Carolina (12/28/16)
	25		Caliya Robinson vs Kennesaw State (11/29/16)
	24		Caliya Robinson vs Samford (12/22/16)
	24		Caliya Robinson vs Mercer (11/13/16)
Field Goals Made	14		Caliya Robinson vs Minnesota (11/24/16)
	12		Pachis Roberts vs Western Carolina (12/28/16)
Field Goal Att.	27		Caliya Robinson vs Minnesota (11/24/16)
	18		Caliya Robinson vs Furman (12/5/16)
FG Pct (min 5 made)	.769	(10-13)	Caliya Robinson vs Mercer (11/13/16)
	.750	(12-16)	Pachis Roberts vs Western Carolina (12/28/16)
3-Point FG Made	3		Pachis Roberts vs Furman (12/5/16)
	3		Mackenzie Ingram vs BYU (11/16/16)
3-Point FG Att.	7		Simone Costa at Cincinnati (12/15/16)
	6		Pachis Roberts vs Mercer (11/13/16)
	6		Shanea Armbrister vs South Carolina State (11/11/16)
	6		Simone Costa vs South Carolina State (11/11/16)
3-Pt FG Pct (min 2 made)	.667	(2-3)	Simone Costa vs Western Carolina (12/28/16)
	.667	(2-3)	Mackenzie Ingram vs Kennesaw State (11/29/16)
	.667	(2-3)	Simone Costa vs Minnesota (11/24/16)
Free Throws Made	10		Pachis Roberts vs USF (11/26/16)
	8		Pachis Roberts vs Mercer (11/13/16)
Free Throw Att.	10		Pachis Roberts vs USF (11/26/16)
	10		Pachis Roberts vs Mercer (11/13/16)
FT Pct (min 3 made)	1.000	(10-10)	Pachis Roberts vs USF (11/26/16)
	1.000	(6-6)	Pachis Roberts vs Minnesota (11/24/16)
	1.000	(4-4)	Haley Clark at Mizzou (01/01/17)
	1.000	(4-4)	Pachis Roberts vs Western Carolina (12/28/16)
	1.000	(4-4)	Mackenzie Ingram vs USF (11/26/16)
	1.000	(4-4)	Mackenzie Ingram vs Mercer (11/13/16)
	1.000	(4-4)	Pachis Roberts vs South Carolina State (11/11/16)
	1.000	(3-3)	Stephanie Paul vs Samford (12/22/16)
	1.000	(3-3)	Simone Costa vs South Carolina State (11/11/16)
Rebounds	14		Pachis Roberts vs Kennesaw State (11/29/16)
	12		Mackenzie Ingram at Oklahoma State (12/3/16)
	12		Pachis Roberts vs Minnesota (11/24/16)
Assists	8		Shanea Armbrister vs Mercer (11/13/16)
	7		Haley Clark vs Texas A&M (1/5/17)
Steals	6		Pachis Roberts at Cincinnati (12/15/16)
	4		Pachis Roberts vs Texas A&M (1/5/17)
	4		Pachis Roberts vs Kennesaw State (11/29/16)
	4		Caliya Robinson vs BYU (11/16/16)
Blocked Shots	4		Caliya Robinson vs Kennesaw State (11/29/16)
	4		Caliya Robinson vs Mercer (11/13/16)
Turnovers	9		Caliya Robinson vs Texas A&M (1/5/17)
	9		Caliya Robinson at Georgia Tech (11/20/16)
Fouls	5		Pachis Roberts vs Texas A&M (1/5/17)
	5		Haley Clark vs Western Carolina (12/28/16)
	5		Halle Washington at Oklahoma State (12/3/16)
	5		Haley Clark vs USF (11/26/16)
	5		Caliya Robinson vs USF (11/26/16)
	5		Haley Clark at Georgia Tech (11/20/16)
Minutes	40		Haley Clark at Mizzou (01/01/17)





University of Georgia Basketball
Georgia Team High/Low Analysis (as of Jan 06, 2017)
All games



Georgia - TEAM GAME HIGHS

POINTS	82	KENNESAW STATE (11/29/16)
	81	BYU (11/16/16)
	78	WESTERN CAROLINA (12/28/16)
	72	MERCER (11/13/16)
	70	vs Minnesota (11/24/16)
FIELD GOALS MADE	32	KENNESAW STATE (11/29/16)
	31	BYU (11/16/16)
FIELD GOAL ATTEMPTS	68	SOUTH CAROLINA STATE (11/11/16)
	64	vs Minnesota (11/24/16)
FIELD GOAL PERCENTAGE	.582 (32-55)	KENNESAW STATE (11/29/16)
	.577 (30-52)	WESTERN CAROLINA (12/28/16)
3 PT FIELD GOALS MADE	7	FURMAN (12/5/16)
	5	WESTERN CAROLINA (12/28/16)
3 PT FG ATTEMPTS	21	SOUTH CAROLINA STATE (11/11/16)
	17	MERCER (11/13/16)
3 PT FG PERCENTAGE	.556 (5-9)	WESTERN CAROLINA (12/28/16)
	.438 (7-16)	FURMAN (12/5/16)
FREE THROWS MADE	18	vs USF (11/26/16)
	17	MERCER (11/13/16)
FREE THROW ATTEMPTS	24	SAMFORD (12/22/16)
	24	KENNESAW STATE (11/29/16)
FREE THROW PERCENTAGE	.900 (18-20)	vs USF (11/26/16)
	.818 (9-11)	at Mizzou (01/01/17)
REBOUNDS	53	SOUTH CAROLINA STATE (11/11/16)
	45	vs Minnesota (11/24/16)
ASSISTS	24	KENNESAW STATE (11/29/16)
	23	vs Minnesota (11/24/16)
STEALS	15	at Cincinnati (12/15/16)
	13	WESTERN CAROLINA (12/28/16)
BLOCKED SHOTS	8	KENNESAW STATE (11/29/16)
	7	at Georgia Tech (11/20/16)
TURNOVERS	27	at Georgia Tech (11/20/16)
	20	VIRGINIA (12/19/16)
	20	MERCER (11/13/16)
FOULS	26	vs USF (11/26/16)
	21	FURMAN (12/5/16)
	21	vs Minnesota (11/24/16)

