

**VANDERBILT UNIVERSITY**

**2016-17 BOWLING STATISTICS**

**3/28/2017 21:20**

**VANDERBILT UNIVERSITY**  
**TEAM STATISTICS BY FORMAT BY EVENT**

Bowler (All)		All Bowlers																							Anchor Bowler					Leadoff Bowler			4th Bowler		
Row Labels	Sum of COMPLETE FRAMES	Sum of INCOMPLETE FRAMES	Sum of Average / Frame	Sum of Fill %	Sum of STRIKES	Sum of Strike Attempts	Sum of Striking %	Sum of 1stBall 9+ %	Sum of Avg1st Ball	Sum of SPARES	Sum of Spare Attempts	Sum of Spare %	Sum of 9CT Spares	Sum of 9CT Attmpts	Sum of 9CT Spare %	Sum of 8CT Spares	Sum of 8CT Attpts	Sum of 7CT Spares	Sum of 7CT Attpts	Sum of Other Spares	Sum of Other Attmpts	Sum of MultiPin Spare %	Sum of BKDBL Strikes	Sum of BKDBL Attempts	Sum of BKDBL %	Sum of 10thFrame Attempts	Sum of 10th Frame Avg	Sum of 10thFrame Fill%	Sum of 10thFrame Strike %	Sum of 10thFrame Double %	Sum of Leadoff Attempts	Sum of Leadoff Fill%	Sum of Leadoff Strike %	Sum of Setup Attempts	Sum of Setup %
<b>Baker</b>	<b>4176</b>	<b>54</b>	<b>19.75</b>	<b>84.8%</b>	<b>1894</b>	<b>4230</b>	<b>44.8%</b>	<b>70.4%</b>	<b>8.93</b>	<b>1692</b>	<b>2336</b>	<b>72.4%</b>	<b>996</b>	<b>1083</b>	<b>92.0%</b>	<b>390</b>	<b>594</b>	<b>226</b>	<b>420</b>	<b>80</b>	<b>239</b>	<b>55.5%</b>	<b>751</b>	<b>1655</b>	<b>45.4%</b>	<b>425</b>	<b>21.29</b>	<b>86.4%</b>	<b>56.2%</b>	<b>34.8%</b>	<b>421</b>	<b>83.1%</b>	<b>39.2%</b>	<b>421</b>	<b>49.4%</b>
KAT KLASH	484	6	19.35	83.9%	220	490	44.9%	67.8%	8.86	191	270	70.7%	107	112	95.5%	45	66	32	60	7	32	53.2%	82	193	42.5%	49	19.84	85.7%	55.1%	20.4%	49	77.6%	42.9%	49	57.1%
WARHAWK CLASSIC	404	6	19.77	85.6%	185	410	45.1%	71.5%	8.93	166	225	73.8%	100	108	92.6%	36	51	24	40	6	26	56.4%	75	161	46.6%	41	21.32	87.8%	58.5%	34.1%	41	82.9%	39.0%	41	46.3%
ALL STATE SUGAR BOWL	431	4	20.38	83.7%	215	435	49.4%	74.5%	9.04	149	220	67.7%	98	109	89.9%	27	56	20	32	4	23	45.9%	89	188	47.3%	44	22.73	84.1%	61.4%	50.0%	43	76.7%	41.9%	43	55.8%
MID WINTER INVITATIONAL	429	6	19.25	84.1%	173	435	39.8%	69.0%	8.83	193	262	73.7%	116	127	91.3%	47	59	20	49	10	27	57.0%	56	148	37.8%	44	21.02	86.4%	56.8%	34.1%	43	81.4%	32.6%	43	37.2%
KUTZTOWN INVITATIONAL	473	7	20.72	87.7%	238	480	49.6%	72.5%	9.09	183	242	75.6%	103	110	93.6%	56	81	20	38	4	13	60.6%	117	206	56.8%	48	23.63	93.8%	66.7%	47.9%	48	79.2%	33.3%	48	54.2%
PRAIRIE VIEW A&M INVITE	361	4	19.68	86.3%	162	365	44.4%	71.8%	8.94	153	203	75.4%	92	100	92.0%	39	49	16	34	6	20	59.2%	70	139	50.4%	37	21.89	91.9%	62.2%	35.1%	36	80.6%	30.6%	36	47.2%
LADYJACK CLASSIC	445	5	20.01	84.4%	210	450	46.7%	69.3%	8.92	170	240	70.8%	95	102	93.1%	37	63	28	50	10	25	54.3%	81	182	44.5%	45	22.27	88.9%	62.2%	42.2%	45	91.1%	48.9%	45	64.4%
MUSIC CITY CLASSIC	419	6	19.88	84.2%	195	425	45.9%	75.5%	9.04	163	230	70.9%	113	126	89.7%	25	49	18	38	7	17	48.1%	78	170	45.9%	43	21.09	83.7%	58.1%	34.9%	42	83.3%	47.6%	42	45.2%
HAWK FLIGHT	385	5	19.50	85.6%	165	390	42.3%	65.6%	8.84	169	225	75.1%	84	91	92.3%	45	67	28	46	12	21	63.4%	56	150	37.3%	39	19.49	82.1%	38.5%	25.6%	39	89.7%	35.9%	39	53.8%
SOUTHLAND CHAMPIONSHIPS	345	5	18.68	81.7%	131	350	37.4%	65.4%	8.73	155	219	70.8%	88	98	89.8%	33	53	20	33	14	35	55.4%	47	118	39.8%	35	18.94	77.1%	37.1%	20.0%	35	91.4%	37.1%	35	25.7%
<b>Traditional</b>	<b>2635</b>	<b>5</b>	<b>19.82</b>	<b>84.9%</b>	<b>1222</b>	<b>2640</b>	<b>46.3%</b>	<b>71.7%</b>	<b>8.96</b>	<b>1020</b>	<b>1418</b>	<b>71.9%</b>	<b>610</b>	<b>670</b>	<b>91.0%</b>	<b>229</b>	<b>349</b>	<b>123</b>	<b>237</b>	<b>58</b>	<b>162</b>	<b>54.8%</b>	<b>0</b>	<b>0</b>		<b>264</b>	<b>19.89</b>	<b>85.6%</b>	<b>44.7%</b>	<b>22.7%</b>	<b>264</b>	<b>83.3%</b>	<b>44.3%</b>	<b>264</b>	<b>47.0%</b>
KAT KLASH	250	0	20.35	84.8%	130	250	52.0%	73.6%	9.08	82	120	68.3%	48	54	88.9%	21	33	11	23	2	10	51.5%	0	0		25	19.92	76.0%	56.0%	32.0%	25	80.0%	56.0%	25	20.0%
WARHAWK CLASSIC	250	0	20.27	86.4%	117	250	46.8%	70.4%	9.01	99	133	74.4%	54	59	91.5%	33	47	9	15	3	12	60.8%	0	0		25	20.16	88.0%	48.0%	24.0%	25	76.0%	28.0%	25	56.0%
ALL STATE SUGAR BOWL	300	0	21.62	89.0%	175	300	58.3%	81.7%	9.26	92	125	73.6%	64	70	91.4%	15	24	11	20	2	11	50.9%	0	0		30	21.43	86.7%	53.3%	33.3%	30	90.0%	50.0%	30	63.3%
MID WINTER INVITATIONAL	250	0	18.66	82.4%	93	250	37.2%	64.0%	8.70	113	157	72.0%	61	67	91.0%	24	34	21	36	7	20	57.8%	0	0		25	20.28	92.0%	40.0%	20.0%	25	76.0%	28.0%	25	36.0%
KUTZTOWN INVITATIONAL	299	1	20.26	87.7%	141	300	47.0%	74.3%	9.03	122	159	76.7%	76	82	92.7%	26	37	15	25	5	15	59.7%	0	0		30	19.70	96.7%	46.7%	10.0%	30	83.3%	53.3%	30	43.3%
PRAIRIE VIEW A&M INVITE	300	0	19.78	85.7%	141	300	47.0%	72.0%	8.89	116	159	73.0%	67	75	89.3%	23	32	14	26	12	26	58.3%	0	0		30	18.77	80.0%	43.3%	20.0%	30	80.0%	43.3%	30	60.0%
LADYJACK CLASSIC	239	1	19.89	86.3%	111	240	46.3%	71.7%	8.92	96	129	74.4%	59	61	96.7%	17	26	11	24	9	18	54.4%	0	0		24	21.50	91.7%	54.2%	33.3%	24	87.5%	45.8%	24	41.7%
MUSIC CITY CLASSIC	249	1	19.69	83.2%	121	250	48.4%	72.8%	9.02	87	129	67.4%	54	61	88.5%	16	31	12	27	5	10	48.5%	0	0		25	19.68	84.0%	40.0%	24.0%	25	88.0%	60.0%	25	52.0%
HAWK FLIGHT	248	2	18.13	78.8%	88	250	35.2%	64.0%	8.74	109	162	67.3%	64	72	88.9%	27	48	11	23	7	19	50.0%	0	0		25	18.80	84.0%	32.0%	12.0%	25	84.0%	40.0%	25	36.0%
SOUTHLAND CHAMPIONSHIPS	250	0	19.14	83.6%	105	250	42.0%	69.6%	8.87	104	145	71.7%	63	69	91.3%	27	37	8	18	6	21	53.9%	0	0		25	18.72	76.0%	32.0%	20.0%	25	88.0%	36.0%	25	56.0%
<b>Grand Total</b>	<b>6811</b>	<b>59</b>	<b>19.78</b>	<b>84.8%</b>	<b>3116</b>	<b>6870</b>	<b>45.4%</b>	<b>70.9%</b>	<b>8.94</b>	<b>2712</b>	<b>3754</b>	<b>72.2%</b>	<b>1606</b>	<b>1753</b>	<b>91.6%</b>	<b>619</b>	<b>943</b>	<b>349</b>	<b>657</b>	<b>138</b>	<b>401</b>	<b>55.3%</b>	<b>751</b>	<b>1655</b>	<b>45.4%</b>	<b>689</b>	<b>20.75</b>	<b>86.1%</b>	<b>51.8%</b>	<b>30.2%</b>	<b>685</b>	<b>83.2%</b>	<b>41.2%</b>	<b>685</b>	<b>48.5%</b>

**VANDERBILT UNIVERSITY**  
**INDIVIDUAL STATISTICS - BY FORMAT BY EVENT**

division	(All)																																		
Row Labels	All Bowlers																						Anchor Bowler					Leadoff Bowler			4th Bowler				
	Sum of COMPLETE FRAMES	Sum of INCOMPLETE FRAMES	Sum of Average / Frame	Sum of Fill %	Sum of STRIKES	Sum of Strike Attempts	Sum of Striking %	Sum of 1stBall 9+ %	Sum of Avg1st Ball	Sum of SPARES	Sum of Spare Attempts	Sum of Spare %	Sum of 9CT Spares	Sum of 9CT Attmpts	Sum of 9CT Spare %	Sum of 8CT Spares	Sum of 8CT Attpts	Sum of 7CT Spares	Sum of 7CT Attpts	Sum of Other Spares	Sum of Other Attmpts	Sum of MultiPin Spare%	Sum of BKDBL Strikes	Sum of BKDBL Attempts	Sum of BKDBL %	Sum of 10thFrame Attempts	Sum of 10th Frame Avg	Sum of 10thFrame Fill%	Sum of 10thFrame Strike %	Sum of 10thFrame Double %	Sum of Leadoff Attempts	Sum of Leadoff Fill%	Sum of Leadoff Strike %	Sum of Setup Attempts	Sum of Setup%
<b>Baker</b>	<b>4176</b>	<b>54</b>	<b>19.75</b>	<b>84.8%</b>	<b>1894</b>	<b>4230</b>	<b>44.8%</b>	<b>70.4%</b>	<b>8.93</b>	<b>1692</b>	<b>2336</b>	<b>72.4%</b>	<b>996</b>	<b>1083</b>	<b>92.0%</b>	<b>390</b>	<b>594</b>	<b>226</b>	<b>420</b>	<b>80</b>	<b>239</b>	<b>55.5%</b>	<b>751</b>	<b>1655</b>	<b>45.4%</b>	<b>425</b>	<b>21.29</b>	<b>86.4%</b>	<b>56.2%</b>	<b>34.8%</b>	<b>421</b>	<b>83.1%</b>	<b>39.2%</b>	<b>421</b>	<b>49.4%</b>
<b>KAT KLASH</b>	<b>484</b>	<b>6</b>	<b>19.35</b>	<b>83.9%</b>	<b>220</b>	<b>490</b>	<b>44.9%</b>	<b>67.8%</b>	<b>8.86</b>	<b>191</b>	<b>270</b>	<b>70.7%</b>	<b>107</b>	<b>112</b>	<b>95.5%</b>	<b>45</b>	<b>66</b>	<b>32</b>	<b>60</b>	<b>7</b>	<b>32</b>	<b>53.2%</b>	<b>82</b>	<b>193</b>	<b>42.5%</b>	<b>49</b>	<b>19.84</b>	<b>85.7%</b>	<b>55.1%</b>	<b>20.4%</b>	<b>49</b>	<b>77.6%</b>	<b>42.9%</b>	<b>49</b>	<b>57.1%</b>
Jordan Newham	47	1	19.21	83.3%	20	48	41.7%	66.7%	8.92	20	28	71.4%	12	12	100.0%	4	8	4	8	0	0	50.0%	7	15	46.7%	0				22	90.9%	45.5%	0		
Giselle Poss	94	2	20.94	88.5%	52	96	54.2%	75.0%	9.09	33	44	75.0%	20	20	100.0%	9	12	4	6	0	6	54.2%	22	36	61.1%	0				0			12	66.7%	
Emily Rigney	72	0	16.38	73.6%	19	72	26.4%	47.2%	8.33	34	53	64.2%	13	15	86.7%	11	15	8	18	2	5	55.3%	9	31	29.0%	0				0			0		
Kristin Quah	97	1	19.89	86.7%	46	98	46.9%	73.5%	8.98	39	52	75.0%	26	26	100.0%	7	10	5	10	1	6	50.0%	17	40	42.5%	5	19.40	80.0%	40.0%	20.0%	0			37	54.1%
Maria Bulanova	88	0	20.59	89.8%	49	88	55.7%	78.4%	9.11	30	39	76.9%	20	20	100.0%	2	6	7	9	1	4	52.6%	22	42	52.4%	44	19.89	86.4%	56.8%	20.5%	0			0	
Nicole Powell	13	1	16.62	71.4%	4	14	28.6%	50.0%	8.29	6	10	60.0%	2	3	66.7%	3	3	1	2	0	2	57.1%	0	3	0.0%	0				7	57.1%	28.6%	0		
Adel Wahner	57	1	19.11	81.0%	25	58	43.1%	62.1%	8.69	22	33	66.7%	9	11	81.8%	8	10	2	5	3	7	59.1%	4	19	21.1%	0				20	70.0%	45.0%	0		
Katie Stark	16	0	16.88	75.0%	5	16	31.3%	62.5%	8.56	7	11	63.6%	5	5	100.0%	1	2	1	2	0	2	33.3%	1	7	14.3%	0				0			0		
<b>WARHAWK CLASSIC</b>	<b>404</b>	<b>6</b>	<b>19.77</b>	<b>85.6%</b>	<b>185</b>	<b>410</b>	<b>45.1%</b>	<b>71.5%</b>	<b>8.93</b>	<b>166</b>	<b>225</b>	<b>73.8%</b>	<b>100</b>	<b>108</b>	<b>92.6%</b>	<b>36</b>	<b>51</b>	<b>24</b>	<b>40</b>	<b>6</b>	<b>26</b>	<b>56.4%</b>	<b>75</b>	<b>161</b>	<b>46.6%</b>	<b>41</b>	<b>21.32</b>	<b>87.8%</b>	<b>58.5%</b>	<b>34.1%</b>	<b>41</b>	<b>82.9%</b>	<b>39.0%</b>	<b>41</b>	<b>46.3%</b>
Jordan Newham	46	0	17.67	78.3%	17	46	37.0%	56.5%	8.57	19	29	65.5%	8	9	88.9%	6	8	5	9	0	3	55.0%	5	10	50.0%	0				21	71.4%	38.1%	0		
Giselle Poss	81	1	21.14	91.5%	45	82	54.9%	84.1%	9.26	30	37	81.1%	23	24	95.8%	3	4	4	8	0	1	53.8%	20	35	57.1%	0				0			41	46.3%	
Emily Rigney	59	1	20.12	90.0%	25	60	41.7%	71.7%	8.90	29	35	82.9%	17	18	94.4%	7	9	4	5	1	3	70.6%	9	23	39.1%	0				0			0		
Maria Bulanova	82	0	21.74	90.2%	48	82	58.5%	82.9%	9.22	26	34	76.5%	19	20	95.0%	1	3	4	7	2	4	50.0%	20	45	44.4%	41	21.32	87.8%	58.5%	34.1%	0			0	
Nicole Powell	25	1	17.56	65.4%	10	26	38.5%	61.5%	8.54	7	16	43.8%	5	6	83.3%	1	3	1	2	0	5	20.0%	2	6	33.3%	0				0			0		
Adel Wahner	67	1	18.36	85.3%	20	68	29.4%	60.3%	8.62	38	48	79.2%	19	21	90.5%	13	15	4	5	2	7	70.4%	10	24	41.7%	0				13	100.0%	30.8%	0		
Katie Stark	44	2	18.68	80.4%	20	46	43.5%	65.2%	8.87	17	26	65.4%	9	10	90.0%	5	9	2	4	1	3	50.0%	9	18	50.0%	0				7	85.7%	57.1%	0		
<b>ALL STATE SUGAR BOWL</b>	<b>431</b>	<b>4</b>	<b>20.38</b>	<b>83.7%</b>	<b>215</b>	<b>435</b>	<b>49.4%</b>	<b>74.5%</b>	<b>9.04</b>	<b>149</b>	<b>220</b>	<b>67.7%</b>	<b>98</b>	<b>109</b>	<b>89.9%</b>	<b>27</b>	<b>56</b>	<b>20</b>	<b>32</b>	<b>4</b>	<b>23</b>	<b>45.9%</b>	<b>89</b>	<b>188</b>	<b>47.3%</b>	<b>44</b>	<b>22.73</b>	<b>84.1%</b>	<b>61.4%</b>	<b>50.0%</b>	<b>43</b>	<b>76.7%</b>	<b>41.9%</b>	<b>43</b>	<b>55.8%</b>
Jordan Newham	51	0	18.71	80.4%	17	51	33.3%	74.5%	8.84	24	34	70.6%	18	21	85.7%	4	5	2	4	0	4	46.2%	7	20	35.0%	0				0			0		
Giselle Poss	85	2	20.49	86.2%	44	87	50.6%	75.9%	9.01	31	43	72.1%	19	22	86.4%	4	7	8	11	0	3	57.1%	14	39	35.9%	0				0			32	53.1%	
Emily Rigney	23	1	17.57	83.3%	6	24	25.0%	62.5%	8.63	14	18	77.8%	9	9	100.0%	2	5	2	2	1	2	55.6%	2	10	20.0%	0				7	57.1%	42.9%	0		
Kristin Quah	86	1	20.79	83.9%	47	87	54.0%	71.3%	9.06	26	40	65.0%	15	15	100.0%	7	14	4	6	0	5	44.0%	17	32	53.1%	0				0			11	63.6%	
Maria Bulanova	87	0	22.55	83.9%	54	87	62.1%	82.8%	9.33	19	33	57.6%	16	18	88.9%	2	9	1	3	0	3	20.0%	29	50	58.0%	44	22.73	84.1%	61.4%	50.0%	0			0	
Adel Wahner	34	0	19.00	85.3%	16	34	47.1%	67.6%	9.03	13	18	72.2%	6	7	85.7%	6	8	1	2	0	1	63.6%	9	18	50.0%	0				4	75.0%	50.0%	0		
Katie Stark	65	0	19.78	81.5%	31	65	47.7%	73.8%	8.97	22	34	64.7%	15	17	88.2%	2	8	2	4	3	5	41.2%	11	19	57.9%	0				32	81.3%	40.6%	0		
<b>MID WINTER INVITATIONAL</b>	<b>429</b>	<b>6</b>	<b>19.25</b>	<b>84.1%</b>	<b>173</b>	<b>435</b>	<b>39.8%</b>	<b>69.0%</b>	<b>8.83</b>	<b>193</b>	<b>262</b>	<b>73.7%</b>	<b>116</b>	<b>127</b>	<b>91.3%</b>	<b>47</b>	<b>59</b>	<b>20</b>	<b>49</b>	<b>10</b>	<b>27</b>	<b>57.0%</b>	<b>56</b>	<b>148</b>	<b>37.8%</b>	<b>44</b>	<b>21.02</b>	<b>86.4%</b>	<b>56.8%</b>	<b>34.1%</b>	<b>43</b>	<b>81.4%</b>	<b>32.6%</b>	<b>43</b>	<b>37.2%</b>
Jordan Newham	56	1	18.41	84.2%	20	57	35.1%	66.7%	8.77	28	37	75.7%	15	18	83.3%	8	10	2	4	3	5	68.4%	5	15	33.3%	0				28	82.1%	28.6%	0		
Giselle Poss	86	1	18.48	81.6%	30	87	34.5%	73.6%	8.90	41	57	71.9%	30	34	88.2%	7	12	2	7	2	4	47.8%	10	34	29.4%	0				0			43	37.2%	
Emily Rigney	39	1	18.21	82.5%	13	40	32.5%	70.0%	8.58	20	27	74.1%	15	15	100.0%	3	3	1	5	1	4	41.7%	4	11	36.4%	0				0			0		
Kristin Quah	52	1	18.46	79.2%	21	53	39.6%	60.4%	8.72	21	32	65.6%	10	11	90.9%	6	9	5	9	0	3	52.4%	10	20	50.0%	0				0			0		
Maria Bulanova	87	0	21.17	86.2%	46	87	52.9%	75.9%	9.09	29	41	70.7%	18	20	90.0%	8	9	2	8	1	4	52.4%	14	30	46.7%	44	21.02	86.4%	56.8%	34.1%	0			0	
Adel Wahner	66	1	19.59	86.6%	27	67	40.3%	61.2%	8.73	31	40	77.5%	13	14	92.9%	11	12	6	10	1	4	69.2%	9	23	39.1%	0				15	80.0%	40.0%	0		
Katie Stark	43	1	19.40	88.6%	16	44	36.4%	70.5%	8.77	23	28	82.1%	15	15	100.0%	4	4	2	6	2	3	61.5%	4	15	26.7%	0				0			0		
<b>KUTZTOWN INVITATIONAL</b>	<b>473</b>	<b>7</b>	<b>20.72</b>	<b>87.7%</b>	<b>238</b>	<b>480</b>	<b>49.6%</b>	<b>72.5%</b>	<b>9.09</b>	<b>183</b>	<b>242</b>	<b>75.6%</b>	<b>103</b>	<b>110</b>	<b>93.6%</b>	<b>56</b>	<b>81</b>	<b>20</b>	<b>38</b>	<b>4</b>	<b>13</b>	<b>60.6%</b>	<b>117</b>	<b>206</b>	<b>56.8%</b>	<b>48</b>	<b>23.63</b>	<b>93.8%</b>	<b>66.7%</b>	<b>47.9%</b>	<b>48</b>	<b>79.2%</b>	<b>33.3%</b>	<b>48</b>	<b>54.2%</b>
Jordan Newham	54	1	18.52	78.2%	22	55	40.0%	65.5%	8.91	21	33	63.6%	11	14	78.6%	8	14	1	2	1	3	52.6%	9	15	60.0%	0				23	69.6%	30.4%	0		
Giselle Poss	94	2	21.09	88.5%	53	96	55.2%	79.2%	9.23	32	43	74.4%	21	23	91.3%	7	12	3	6	1															

Row Labels	Sum of COMPLETE FRAMES	Sum of INCOMPLETE FRAMES	Sum of Average / Frame	Sum of Fill %	Sum of STRIKES	Sum of Strike Attempts	Sum of Striking %	Sum of 1stBall 9+ %	Sum of Avg1st Ball	Sum of SPARES	Sum of Spare Attempts	Sum of Spare %	Sum of 9CT Spares	Sum of 9CT Attmpts	Sum of 9CT Spare %	Sum of 8CT Spares	Sum of 8CT Attpts	Sum of 7CT Spares	Sum of 7CT Attpts	Sum of Other Spares	Sum of Other Attmpts	Sum of MultiPin Spare%	Sum of BKDBL Strikes	Sum of BKDBL Attempts	Sum of BKDBL %	Sum of 10thFrame Attempts	Sum of 10th Frame Avg	Sum of 10thFrame Fill%	Sum of 10thFrame Strike %	Sum of 10thFrame Double %	Sum of Leadoff Attempts	Sum of Leadoff Fill%	Sum of Leadoff Strike %	Sum of Setup Attempts	Sum of Setup%
Adel Wahner	93	1	20.56	86.2%	46	94	48.9%	69.1%	8.96	35	48	72.9%	18	19	94.7%	8	13	8	11	1	5	58.6%	19	35	54.3%	0					2	50.0%	50.0%	0	
Katie Stark	36	1	19.25	86.5%	15	37	40.5%	56.8%	8.73	17	22	77.3%	6	6	100.0%	8	8	2	7	1	1	68.8%	3	10	30.0%	0					18	88.9%	44.4%	0	
<b>PRAIRIE VIEW A&amp;M INVITE</b>	<b>361</b>	<b>4</b>	<b>19.68</b>	<b>86.3%</b>	<b>162</b>	<b>365</b>	<b>44.4%</b>	<b>71.8%</b>	<b>8.94</b>	<b>153</b>	<b>203</b>	<b>75.4%</b>	<b>92</b>	<b>100</b>	<b>92.0%</b>	<b>39</b>	<b>49</b>	<b>16</b>	<b>34</b>	<b>6</b>	<b>20</b>	<b>59.2%</b>	<b>70</b>	<b>139</b>	<b>50.4%</b>	<b>37</b>	<b>21.89</b>	<b>91.9%</b>	<b>62.2%</b>	<b>35.1%</b>	<b>36</b>	<b>80.6%</b>	<b>30.6%</b>	<b>36</b>	<b>47.2%</b>
Jordan Newham	38	0	17.08	76.3%	13	38	34.2%	52.6%	8.21	16	25	64.0%	6	7	85.7%	5	6	3	5	2	7	55.6%	4	7	57.1%	0					18	72.2%	27.8%	0	
Giselle Poss	72	1	20.89	89.0%	40	73	54.8%	76.7%	9.19	25	33	75.8%	16	16	100.0%	9	11	0	3	0	3	52.9%	16	33	48.5%	0					0			36	47.2%
Emily Rigney	23	0	18.52	82.6%	8	23	34.8%	56.5%	8.65	11	15	73.3%	4	5	80.0%	4	5	2	4	1	1	70.0%	3	7	42.9%	0					0			0	
Kristin Quah	72	1	20.08	89.0%	33	73	45.2%	75.3%	9.07	32	40	80.0%	21	22	95.5%	6	9	5	8	0	1	61.1%	12	25	48.0%	0					0			0	
Maria Bulanova	73	0	21.08	87.7%	37	73	50.7%	84.9%	9.16	27	36	75.0%	22	25	88.0%	1	2	2	5	2	4	45.5%	25	40	62.5%	37	21.89	91.9%	62.2%	35.1%	0			0	
Adel Wahner	72	1	18.63	86.3%	27	73	37.0%	68.5%	8.86	36	46	78.3%	21	23	91.3%	11	13	3	6	1	4	65.2%	7	22	31.8%	0					18	88.9%	33.3%	0	
Katie Stark	11	1	18.18	83.3%	4	12	33.3%	50.0%	8.58	6	8	75.0%	2	2	100.0%	3	3	1	3	0	0	66.7%	3	5	60.0%	0					0			0	
<b>LADYJACK CLASSIC</b>	<b>445</b>	<b>5</b>	<b>20.01</b>	<b>84.4%</b>	<b>210</b>	<b>450</b>	<b>46.7%</b>	<b>69.3%</b>	<b>8.92</b>	<b>170</b>	<b>240</b>	<b>70.8%</b>	<b>95</b>	<b>102</b>	<b>93.1%</b>	<b>37</b>	<b>63</b>	<b>28</b>	<b>50</b>	<b>10</b>	<b>25</b>	<b>54.3%</b>	<b>81</b>	<b>182</b>	<b>44.5%</b>	<b>45</b>	<b>22.27</b>	<b>88.9%</b>	<b>62.2%</b>	<b>42.2%</b>	<b>45</b>	<b>91.1%</b>	<b>48.9%</b>	<b>45</b>	<b>64.4%</b>
Jordan Newham	39	1	17.44	72.5%	14	40	35.0%	55.0%	8.68	15	26	57.7%	7	8	87.5%	4	10	4	7	0	1	44.4%	8	19	42.1%	0					0			0	
Giselle Poss	88	0	20.26	87.5%	45	88	51.1%	72.7%	8.99	32	43	74.4%	19	19	100.0%	7	9	5	10	1	5	54.2%	18	35	51.4%	0					0			44	65.9%
Emily Rigney	45	1	19.64	82.6%	19	46	41.3%	63.0%	8.80	19	27	70.4%	9	10	90.0%	6	8	3	7	1	2	58.8%	7	22	31.8%	0					0			0	
Kristin Quah	83	1	19.17	81.0%	34	84	40.5%	66.7%	8.79	34	50	68.0%	21	22	95.5%	6	14	4	7	3	7	46.4%	10	32	31.3%	0					0			0	
Maria Bulanova	88	0	21.77	86.4%	50	88	56.8%	80.7%	9.19	26	38	68.4%	19	21	90.5%	4	8	1	4	2	5	41.2%	25	45	55.6%	44	22.32	88.6%	61.4%	43.2%	0			0	
Adel Wahner	97	1	20.40	89.8%	46	98	46.9%	68.4%	8.94	42	52	80.8%	19	21	90.5%	10	14	10	13	3	4	74.2%	12	26	46.2%	1	20.00	100.0%	100.0%	0.0%	45	91.1%	48.9%	1	0.0%
Katie Stark	5	1	14.20	66.7%	2	6	33.3%	50.0%	8.00	2	4	50.0%	1	1	100.0%	0	0	1	2	0	1	33.3%	1	3	33.3%	0					0			0	
<b>MUSIC CITY CLASSIC</b>	<b>419</b>	<b>6</b>	<b>19.88</b>	<b>84.2%</b>	<b>195</b>	<b>425</b>	<b>45.9%</b>	<b>75.5%</b>	<b>9.04</b>	<b>163</b>	<b>230</b>	<b>70.9%</b>	<b>113</b>	<b>126</b>	<b>89.7%</b>	<b>25</b>	<b>49</b>	<b>18</b>	<b>38</b>	<b>7</b>	<b>17</b>	<b>48.1%</b>	<b>78</b>	<b>170</b>	<b>45.9%</b>	<b>43</b>	<b>21.09</b>	<b>83.7%</b>	<b>58.1%</b>	<b>34.9%</b>	<b>42</b>	<b>83.3%</b>	<b>47.6%</b>	<b>42</b>	<b>45.2%</b>
Jordan Newham	19	1	17.00	70.0%	8	20	40.0%	65.0%	8.85	6	12	50.0%	4	5	80.0%	1	3	1	4	0	0	28.6%	3	6	50.0%	0					10	70.0%	50.0%	0	
Giselle Poss	84	1	19.67	83.5%	37	85	43.5%	72.9%	9.02	34	48	70.8%	22	25	88.0%	8	13	4	8	0	2	52.2%	17	42	40.5%	0					0			39	43.6%
Emily Rigney	74	1	20.99	92.0%	34	75	45.3%	77.3%	9.09	35	41	85.4%	24	24	100.0%	4	9	5	6	2	2	64.7%	11	27	40.7%	0					10	90.0%	40.0%	0	
Kristin Quah	84	1	20.43	84.7%	47	85	55.3%	82.4%	9.15	25	38	65.8%	21	23	91.3%	1	2	2	8	1	5	26.7%	20	32	62.5%	23	21.70	91.3%	60.9%	30.4%	0			3	66.7%
Maria Bulanova	85	0	20.87	85.9%	45	85	52.9%	82.4%	9.24	28	40	70.0%	21	25	84.0%	3	8	3	5	1	2	46.7%	20	40	50.0%	20	20.40	75.0%	55.0%	40.0%	0			0	
Nicole Powell	4	0	10.50	25.0%	0	4	0.0%	50.0%	7.75	1	4	25.0%	1	2	50.0%	0	0	0	1	0	1	0.0%	0	3	0.0%	0					0			0	
Adel Wahner	35	1	17.60	80.6%	10	36	27.8%	61.1%	8.61	19	26	73.1%	12	12	100.0%	4	7	2	4	1	3	50.0%	2	8	25.0%	0					15	86.7%	46.7%	0	
Katie Stark	34	1	19.18	82.9%	14	35	40.0%	68.6%	8.91	15	21	71.4%	8	10	80.0%	4	7	1	2	2	2	63.6%	5	12	41.7%	0					7	85.7%	57.1%	0	
<b>HAWK FLIGHT</b>	<b>385</b>	<b>5</b>	<b>19.50</b>	<b>85.6%</b>	<b>165</b>	<b>390</b>	<b>42.3%</b>	<b>65.6%</b>	<b>8.84</b>	<b>169</b>	<b>225</b>	<b>75.1%</b>	<b>84</b>	<b>91</b>	<b>92.3%</b>	<b>45</b>	<b>67</b>	<b>28</b>	<b>46</b>	<b>12</b>	<b>21</b>	<b>63.4%</b>	<b>56</b>	<b>150</b>	<b>37.3%</b>	<b>39</b>	<b>19.49</b>	<b>82.1%</b>	<b>38.5%</b>	<b>25.6%</b>	<b>39</b>	<b>89.7%</b>	<b>35.9%</b>	<b>39</b>	<b>53.8%</b>
Jordan Newham	1	1	20.00	100.0%	1	2	50.0%	50.0%	9.00	1	1	100.0%	0	0		1	1	0	0	0	0	100.0%	0	0		0					1	100.0%	100.0%	0	
Giselle Poss	77	1	20.31	91.0%	37	78	47.4%	69.2%	9.04	34	41	82.9%	16	17	94.1%	12	16	5	6	1	2	75.0%	16	35	45.7%	0					0			39	53.8%
Emily Rigney	77	1	20.55	88.5%	42	78	53.8%	74.4%	9.10	27	36	75.0%	16	16	100.0%	4	8	5	10	2	2	55.0%	13	26	50.0%	0					0			0	
Kristin Quah	61	1	18.21	80.6%	21	62	33.9%	59.7%	8.63	29	41	70.7%	15	16	93.8%	8	10	5	11	1	4	56.0%	9	32	28.1%	0					0			0	
Maria Bulanova	78	0	19.01	79.5%	31	78	39.7%	61.5%	8.65	31	47	66.0%	13	17	76.5%	8	14	5	7	5	9	60.0%	14	37	37.8%	39	19.49	82.1%	38.5%	25.6%	0			0	
Adel Wahner	76	0	18.80	84.2%	26	76	34.2%	61.8%	8.72	38	50	76.0%	20	21	95.2%	8	14	8	12	2	3	62.1%	2	16	12.5%	0					38	89.5%	34.2%	0	
Katie Stark	15	1	21.27	100.0%	7	16	43.8%	68.8%	9.00	9	9	100.0%	4	4	100.0%	4	4	0	0	1	1	100.0%	2	4	50.0%	0					0			0	
<b>SOUTHLAND CHAMPIONSHIPS</b>	<b>345</b>	<b>5</b>	<b>18.68</b>	<b>81.7%</b>	<b>131</b>	<b>350</b>	<b>37.4%</b>	<b>65.4%</b>	<b>8.73</b>	<b>155</b>	<b>219</b>	<b>70.8%</b>	<b>88</b>	<b>98</b>	<b>89.8%</b>	<b>33</b>	<b>53</b>	<b>20</b>	<b>33</b>	<b>14</b>	<b>35</b>	<b>55.4%</b>	<b>47</b>	<b>118</b>	<b>39.8%</b>	<b>35</b>	<b>18.94</b>	<b>77.1%</b>	<b>37.1%</b>	<b>20.0%</b>	<b>35</b>	<b>91.4%</b>	<b>37.1%</b>	<b>35</b>	<b>25.7%</b>
Jordan Newham	51	1	18.53	84.6%	16	52	30.8%	59.6%	8.58	28	36	77.8%	12	15	80.0%	7	9	6	8	3	4	76.2%	5	17	29.4%	0					10	80.0%	20.0%	0	
Giselle Poss	69	1	19.68	87.1%	28	70	40.0%	68.6%	8.87	33	42	78.6%	20	20	100.0%	7	11	4	7	2	4	59.1%	9	21	42.9%	0					7	100.0%	28.6%	7	28.6%
Emily Rigney	27	1	17.37	78.6%	12	28	42.9%	60.7%	8.57	10	16	62.5%	4	5	80.0%	4	4	0	1	2	6	54.5%	3	9	33.3%	0					0			0	
Kristin Quah	60	0	17.28	71.7%	18	60	30.0%	58.3%	8.43	25	42	59.5%	15	17	88.2%	5	10	2	5	3	10	40.0%	8	24	33.3%	17	18.35	70.6%	35.3%	23.5%	0			9	11.1%
Maria Bulanova	66	0	19.88	84.8%	32	66	48.5%	72.7%	8.94	24	34	70.6%	13	16	81.3%	5	7	4	5	2	6	61.1%	13	21	61.9%	18	19.50	83.3%	38.9%	16.7%	5	100.0%	80.0%	7	42.9%
Adel Wahner	3	1	11.67	50.0%	0	4	0.0%	25.0%	7.75	2	4	50.0%	1	1	100.0%	0	1	1	2	0	0	33.3%	0	1	0.0%	0					0			0	
Katie Stark	69	1	18.67	82.9%	25	70	35.7%	70.0%	8.84	33	45	73.3%	23	24	95.8%	5	11	3	5	2	5	47.6%	9	25	36.0%	0					13	92.3%	38.5%	12	

Row Labels	Sum of COMPLETE FRAMES	Sum of INCOMPLETE FRAMES	Sum of Average / Frame	Sum of Fill %	Sum of STRIKES	Sum of Strike Attempts	Sum of Striking %	Sum of 1stBall 9+ %	Sum of Avg1st Ball	Sum of SPARES	Sum of Spare Attempts	Sum of Spare %	Sum of 9CT Spares	Sum of 9CT Attmpts	Sum of 9CT Spare %	Sum of 8CT Spares	Sum of 8CT Attpts	Sum of 7CT Spares	Sum of 7CT Attpts	Sum of Other Spares	Sum of Other Attmpts	Sum of MultiPin Spare %	Sum of BKDBL Strikes	Sum of BKDBL Attempts	Sum of BKDBL %	Sum of 10thFrame Attempts	Sum of 10th Frame Avg	Sum of 10thFrame Fill%	Sum of 10thFrame Strike %	Sum of 10thFrame Double %	Sum of Leadoff Attempts	Sum of Leadoff Fill%	Sum of Leadoff Strike %	Sum of Setup Attempts	Sum of Setup%
Emily Rigney	4	0	13.00	50.0%	1	4	25.0%	50.0%	8.00	1	3	33.3%	1	1	100.0%	0	0	0	1	0	1	0.0%	0	0		0				1	0.0%	0.0%	1	0.0%	
Kristin Quah	50	0	22.30	86.0%	29	50	58.0%	82.0%	9.30	14	21	66.7%	11	12	91.7%	2	5	1	3	0	1	33.3%	0	0		5	26.80	100.0%	80.0%	80.0%	5	80.0%	40.0%	5	40.0%
Maria Bulanova	50	0	21.58	90.0%	29	50	58.0%	84.0%	9.34	16	21	76.2%	13	13	100.0%	2	4	1	4	0	0	37.5%	0	0		5	24.00	100.0%	80.0%	40.0%	5	80.0%	60.0%	5	40.0%
Adel Wahner	46	0	18.89	84.8%	19	46	41.3%	65.2%	8.76	20	27	74.1%	9	11	81.8%	6	6	4	6	1	4	68.8%	0	0		5	19.20	100.0%	60.0%	0.0%	4	100.0%	50.0%	4	0.0%
<b>WARHAWK CLASSIC</b>	<b>250</b>	<b>0</b>	<b>20.27</b>	<b>86.4%</b>	<b>117</b>	<b>250</b>	<b>46.8%</b>	<b>70.4%</b>	<b>9.01</b>	<b>99</b>	<b>133</b>	<b>74.4%</b>	<b>54</b>	<b>59</b>	<b>91.5%</b>	<b>33</b>	<b>47</b>	<b>9</b>	<b>15</b>	<b>3</b>	<b>12</b>	<b>60.8%</b>	<b>0</b>	<b>0</b>		<b>25</b>	<b>20.16</b>	<b>88.0%</b>	<b>48.0%</b>	<b>24.0%</b>	<b>25</b>	<b>76.0%</b>	<b>28.0%</b>	<b>25</b>	<b>56.0%</b>
Jordan Newham	50	0	19.36	82.0%	21	50	42.0%	66.0%	8.96	20	29	69.0%	10	12	83.3%	9	13	1	2	0	2	58.8%	0	0		5	19.00	80.0%	40.0%	20.0%	5	80.0%	20.0%	5	60.0%
Giselle Poss	50	0	22.16	92.0%	33	50	66.0%	88.0%	9.42	13	17	76.5%	10	11	90.9%	2	2	1	3	0	1	50.0%	0	0		5	19.60	100.0%	80.0%	0.0%	5	100.0%	80.0%	5	80.0%
Emily Rigney	36	0	17.08	77.8%	8	36	22.2%	58.3%	8.44	20	28	71.4%	12	13	92.3%	5	7	2	4	1	4	53.3%	0	0		3	19.00	100.0%	0.0%	0.0%	4	75.0%	25.0%	4	25.0%
Maria Bulanova	50	0	21.12	90.0%	25	50	50.0%	70.0%	9.10	20	25	80.0%	9	10	90.0%	9	12	1	1	1	2	73.3%	0	0		5	20.20	60.0%	60.0%	60.0%	5	80.0%	20.0%	5	60.0%
Nicole Powell	10	0	16.80	70.0%	2	10	20.0%	60.0%	8.50	5	8	62.5%	4	4	100.0%	1	2	0	1	0	1	25.0%	0	0		1	29.00	100.0%	100.0%	100.0%	1	100.0%	0.0%	1	#####
Adel Wahner	40	0	21.50	90.0%	21	40	52.5%	70.0%	9.05	15	19	78.9%	7	7	100.0%	4	7	3	3	1	2	66.7%	0	0		4	21.00	100.0%	25.0%	25.0%	4	25.0%	0.0%	4	50.0%
Katie Stark	14	0	20.86	92.9%	7	14	50.0%	64.3%	9.07	6	7	85.7%	2	2	100.0%	3	4	1	1	0	0	80.0%	0	0		2	20.00	100.0%	50.0%	0.0%	1	100.0%	0.0%	1	0.0%
<b>ALL STATE SUGAR BOWL</b>	<b>300</b>	<b>0</b>	<b>21.62</b>	<b>89.0%</b>	<b>175</b>	<b>300</b>	<b>58.3%</b>	<b>81.7%</b>	<b>9.26</b>	<b>92</b>	<b>125</b>	<b>73.6%</b>	<b>64</b>	<b>70</b>	<b>91.4%</b>	<b>15</b>	<b>24</b>	<b>11</b>	<b>20</b>	<b>2</b>	<b>11</b>	<b>50.9%</b>	<b>0</b>	<b>0</b>		<b>30</b>	<b>21.43</b>	<b>86.7%</b>	<b>53.3%</b>	<b>33.3%</b>	<b>30</b>	<b>90.0%</b>	<b>50.0%</b>	<b>30</b>	<b>63.3%</b>
Jordan Newham	44	0	20.64	93.2%	23	44	52.3%	72.7%	9.05	18	21	85.7%	9	9	100.0%	4	5	4	5	1	2	75.0%	0	0		5	21.60	100.0%	40.0%	20.0%	4	100.0%	75.0%	4	50.0%
Giselle Poss	60	0	22.18	90.0%	35	60	58.3%	90.0%	9.38	19	25	76.0%	18	19	94.7%	0	2	1	2	0	2	16.7%	0	0		6	27.67	100.0%	83.3%	83.3%	6	83.3%	16.7%	6	83.3%
Emily Rigney	2	0	8.50	0.0%	0	2	0.0%	0.0%	7.50	0	2	0.0%	0	0		0	1	0	1	0	0	0.0%	0	0		1	9.00	0.0%	0.0%	0.0%	0			0	
Kristin Quah	60	0	22.38	91.7%	39	60	65.0%	86.7%	9.43	16	21	76.2%	11	13	84.6%	5	5	0	1	0	2	62.5%	0	0		6	18.00	83.3%	33.3%	0.0%	6	83.3%	66.7%	6	66.7%
Maria Bulanova	60	0	23.57	95.0%	42	60	70.0%	91.7%	9.53	15	18	83.3%	13	13	100.0%	0	1	1	3	1	1	40.0%	0	0		6	19.50	83.3%	66.7%	16.7%	6	100.0%	83.3%	6	50.0%
Adel Wahner	38	0	20.24	78.9%	20	38	52.6%	68.4%	8.92	10	18	55.6%	5	6	83.3%	3	5	2	4	0	3	41.7%	0	0		3	22.33	66.7%	66.7%	66.7%	4	75.0%	25.0%	4	75.0%
Katie Stark	16	0	20.63	81.3%	9	16	56.3%	87.5%	9.38	4	7	57.1%	3	5	60.0%	0	1	1	1	0	0	50.0%	0	0		1	30.00	100.0%	100.0%	100.0%	2	100.0%	50.0%	2	50.0%
Bryanna Leyen	20	0	18.75	85.0%	7	20	35.0%	60.0%	8.70	10	13	76.9%	5	5	100.0%	3	4	2	3	0	1	62.5%	0	0		2	19.00	100.0%	0.0%	0.0%	2	100.0%	0.0%	2	50.0%
<b>MID WINTER INVITATIONAL</b>	<b>250</b>	<b>0</b>	<b>18.66</b>	<b>82.4%</b>	<b>93</b>	<b>250</b>	<b>37.2%</b>	<b>64.0%</b>	<b>8.70</b>	<b>113</b>	<b>157</b>	<b>72.0%</b>	<b>61</b>	<b>67</b>	<b>91.0%</b>	<b>24</b>	<b>34</b>	<b>21</b>	<b>36</b>	<b>7</b>	<b>20</b>	<b>57.8%</b>	<b>0</b>	<b>0</b>		<b>25</b>	<b>20.28</b>	<b>92.0%</b>	<b>40.0%</b>	<b>20.0%</b>	<b>25</b>	<b>76.0%</b>	<b>28.0%</b>	<b>25</b>	<b>36.0%</b>
Jordan Newham	16	0	16.06	75.0%	1	16	6.3%	43.8%	7.94	11	15	73.3%	6	6	100.0%	2	2	2	5	1	2	55.6%	0	0		3	19.33	100.0%	0.0%	0.0%	1	100.0%	0.0%	1	0.0%
Giselle Poss	50	0	19.64	82.0%	25	50	50.0%	62.0%	8.74	16	25	64.0%	5	6	83.3%	5	7	4	6	2	6	57.9%	0	0		5	24.60	100.0%	100.0%	60.0%	5	100.0%	80.0%	5	40.0%
Emily Rigney	28	0	18.25	78.6%	8	28	28.6%	57.1%	8.54	14	20	70.0%	7	8	87.5%	4	5	3	5	0	2	58.3%	0	0		2	18.50	100.0%	50.0%	0.0%	3	66.7%	0.0%	3	33.3%
Kristin Quah	10	0	17.80	80.0%	2	10	20.0%	80.0%	8.90	6	8	75.0%	5	6	83.3%	1	1	0	1	0	0	50.0%	0	0		1	9.00	0.0%	0.0%	0.0%	1	0.0%	0.0%	1	0.0%
Maria Bulanova	50	0	19.16	80.0%	26	50	52.0%	80.0%	9.10	14	24	58.3%	12	14	85.7%	1	4	0	1	1	5	20.0%	0	0		5	21.20	100.0%	40.0%	20.0%	5	60.0%	40.0%	5	80.0%
Adel Wahner	50	0	18.68	88.0%	17	50	34.0%	56.0%	8.52	27	33	81.8%	10	11	90.9%	7	7	7	11	3	4	77.3%	0	0		5	21.40	100.0%	20.0%	20.0%	5	60.0%	0.0%	5	40.0%
Katie Stark	46	0	18.37	84.8%	14	46	30.4%	65.2%	8.76	25	32	78.1%	16	16	100.0%	4	8	5	7	0	1	56.3%	0	0		4	16.75	75.0%	25.0%	0.0%	5	100.0%	20.0%	5	0.0%
<b>KUTZTOWN INVITATIONAL</b>	<b>299</b>	<b>1</b>	<b>20.26</b>	<b>87.7%</b>	<b>141</b>	<b>300</b>	<b>47.0%</b>	<b>74.3%</b>	<b>9.03</b>	<b>122</b>	<b>159</b>	<b>76.7%</b>	<b>76</b>	<b>82</b>	<b>92.7%</b>	<b>26</b>	<b>37</b>	<b>15</b>	<b>25</b>	<b>5</b>	<b>15</b>	<b>59.7%</b>	<b>0</b>	<b>0</b>		<b>30</b>	<b>19.70</b>	<b>96.7%</b>	<b>46.7%</b>	<b>10.0%</b>	<b>30</b>	<b>83.3%</b>	<b>53.3%</b>	<b>30</b>	<b>43.3%</b>
Jordan Newham	40	0	19.28	87.5%	14	40	35.0%	65.0%	8.88	21	26	80.8%	11	12	91.7%	7	10	2	3	1	1	71.4%	0	0		4	18.75	100.0%	50.0%	0.0%	4	100.0%	50.0%	4	50.0%
Giselle Poss	60	0	24.08	93.3%	46	60	76.7%	91.7%	9.63	10	14	71.4%	8	9	88.9%	2	3	0	1	0	1	40.0%	0	0		6	20.00	100.0%	50.0%	16.7%	6	100.0%	100.0%	6	83.3%
Emily Rigney	20	0	21.00	100.0%	10	20	50.0%	75.0%	9.20	10	10	100.0%	5	5	100.0%	4	4	1	1	0	0	100.0%	0	0		2	20.00	100.0%	100.0%	0.0%	2	100.0%	100.0%	2	#####
Kristin Quah	54	0	18.85	83.3%	21	54	38.9%	64.8%	8.76	24	33	72.7%	12	14	85.7%	6	8	6	8	0	3	63.2%	0	0		6	20.33	100.0%	50.0%	16.7%	5	60.0%	40.0%	5	20.0%
Maria Bulanova	60	0	20.20	86.7%	29	60	48.3%	80.0%	9.10	23	31	74.2%	17	19	89.5%	1	3	4	7	1	2	50.0%	0	0		6	19.17	100.0%	16.7%	0.0%	6	83.3%	50.0%	6	33.3%
Adel Wahner	45	0	18.64	84.4%	15	45	33.3%	68.9%	8.71	23	30	76.7%	16	16	100.0%	4	6	1	3	2	5	50.0%	0	0		4	22.50	100.0%	75.0%	25.0%	5	60.0%	0.0%	5	20.0%
Katie Stark	20	1	17.65	81.0%	6	21	28.6%	61.9%	8.52	11	15	73.3%	7	7	100.0%	2	3	1	2	1	3	50.0%	0	0		2	14.50	50.0%	0.0%	0.0%	2	100.0%	50.0%	2	0.0%
<b>PRAIRIE VIEW A&amp;M INVITE</b>	<b>300</b>	<b>0</b>	<b>19.78</b>	<b>85.7%</b>	<b>141</b>	<b>300</b>	<b>47.0%</b>	<b>72.0%</b>	<b>8.89</b>	<b>116</b>	<b>159</b>	<b>73.0%</b>	<b>67</b>	<b>75</b>	<b>89.3%</b>	<b>23</b>	<b>32</b>	<b>14</b>	<b>26</b>	<b>12</b>	<b>26</b>	<b>58.3%</b>	<b>0</b>	<b>0</b>		<b>30</b>	<b>18.77</b>	<b>80.0%</b>	<b>43.3%</b>	<b>20.0%</b>	<b>30</b>	<b>80.0%</b>	<b>43.3%</b>	<b>30</b>	<b>60.0%</b>
Jordan Newham	50	0	19.68	90.0%	22	50	44.0%	64.0%	8.72	23	28	82.1%	10	10	100.0%	7	8	3	5	3	5	72.2%	0	0		5	16.00	80.0%	0.0%	0.0%	5	100.0%	80.0%	5	40.0%
Giselle Poss	60	0	21.02	85.0%	34	60	56.7%	78.3%	9.00	17	26	65.4%	11	13	84.6%	3	4	2	4	1	5	46.2%	0	0		6	24.83	100.0%	83.3%	50.0%	6	66.7%	33.3%	6	83.3%
Emily Rigney	10	0	15.10	70.0%	2	10	20.0%	40.0%	7.90	5	8	62.5%	2	2	100.0%	1	1	1	3	1	2	50.0%	0	0		1	9.00	0							

Row Labels	Sum of COMPLETE FRAMES	Sum of INCOMPLETE FRAMES	Sum of Average / Frame	Sum of Fill %	Sum of STRIKES	Sum of Strike Attempts	Sum of Striking %	Sum of 1stBall 9+ %	Sum of Avg1st Ball	Sum of SPARES	Sum of Spare Attempts	Sum of Spare %	Sum of 9CT Spares	Sum of 9CT Attmpts	Sum of 9CT Spare %	Sum of 8CT Spares	Sum of 8CT Attpts	Sum of 7CT Spares	Sum of 7CT Attpts	Sum of Other Spares	Sum of Other Attmpts	Sum of MultiPin Spare%	Sum of BKDBL Strikes	Sum of BKDBL Attempts	Sum of BKDBL %	Sum of 10thFrame Attempts	Sum of 10th Frame Avg	Sum of 10thFrame Fill%	Sum of 10thFrame Strike %	Sum of 10thFrame Double %	Sum of Leadoff Attempts	Sum of Leadoff Fill%	Sum of Leadoff Strike %	Sum of Setup Attempts	Sum of Setup%
Emily Rigney	26	0	20.23	92.3%	13	26	50.0%	73.1%	9.04	11	13	84.6%	6	6	100.0%	3	4	0	1	2	2	71.4%	0	0		3	19.00	100.0%	66.7%	0.0%	2	100.0%	50.0%	2	0.0%
Kristin Quah	40	0	18.25	85.0%	14	40	35.0%	57.5%	8.55	20	26	76.9%	9	9	100.0%	4	7	5	6	2	4	64.7%	0	0		4	16.00	75.0%	25.0%	0.0%	4	75.0%	25.0%	4	25.0%
Maria Bulanova	50	0	20.22	88.0%	24	50	48.0%	82.0%	9.08	20	26	76.9%	15	17	88.2%	1	3	1	2	3	4	55.6%	0	0		5	19.60	80.0%	40.0%	20.0%	5	100.0%	40.0%	5	80.0%
Adel Wahner	40	0	21.25	90.0%	20	40	50.0%	75.0%	8.98	16	20	80.0%	10	10	100.0%	2	2	3	6	1	2	60.0%	0	0		4	26.75	100.0%	75.0%	75.0%	4	100.0%	50.0%	4	50.0%
Katie Stark	23	1	17.52	79.2%	10	24	41.7%	54.2%	8.58	9	14	64.3%	3	3	100.0%	3	4	2	5	1	2	54.5%	0	0		2	20.00	100.0%	0.0%	0.0%	3	100.0%	66.7%	3	33.3%
<b>MUSIC CITY CLASSIC</b>	<b>249</b>	<b>1</b>	<b>19.69</b>	<b>83.2%</b>	<b>121</b>	<b>250</b>	<b>48.4%</b>	<b>72.8%</b>	<b>9.02</b>	<b>87</b>	<b>129</b>	<b>67.4%</b>	<b>54</b>	<b>61</b>	<b>88.5%</b>	<b>16</b>	<b>31</b>	<b>12</b>	<b>27</b>	<b>5</b>	<b>10</b>	<b>48.5%</b>	<b>0</b>	<b>0</b>		<b>25</b>	<b>19.68</b>	<b>84.0%</b>	<b>40.0%</b>	<b>24.0%</b>	<b>25</b>	<b>88.0%</b>	<b>60.0%</b>	<b>25</b>	<b>52.0%</b>
Jordan Newham	17	1	19.53	88.9%	8	18	44.4%	72.2%	8.89	8	10	80.0%	4	5	80.0%	2	2	1	2	1	1	80.0%	0	0		1	29.00	100.0%	100.0%	100.0%	2	100.0%	100.0%	2	0.0%
Giselle Poss	50	0	19.62	86.0%	24	50	48.0%	66.0%	9.00	19	26	73.1%	8	9	88.9%	7	10	4	7	0	0	64.7%	0	0		5	20.60	100.0%	20.0%	20.0%	5	100.0%	60.0%	5	60.0%
Emily Rigney	30	0	18.10	73.3%	14	30	46.7%	73.3%	8.93	8	16	50.0%	6	8	75.0%	0	2	1	4	1	2	25.0%	0	0		3	16.00	66.7%	33.3%	0.0%	3	66.7%	66.7%	3	33.3%
Kristin Quah	50	0	21.34	94.0%	25	50	50.0%	88.0%	9.22	22	25	88.0%	18	19	94.7%	1	1	2	3	1	2	66.7%	0	0		5	21.40	100.0%	60.0%	20.0%	5	100.0%	60.0%	5	80.0%
Maria Bulanova	50	0	20.08	74.0%	27	50	54.0%	66.0%	9.02	10	23	43.5%	5	6	83.3%	2	10	3	5	0	2	29.4%	0	0		5	24.40	100.0%	60.0%	60.0%	5	80.0%	60.0%	5	60.0%
Nicole Powell	10	0	18.50	90.0%	4	10	40.0%	70.0%	8.80	5	6	83.3%	3	3	100.0%	1	1	0	1	1	1	66.7%	0	0		1	20.00	100.0%	0.0%	0.0%	1	100.0%	0.0%	1	0.0%
Adel Wahner	39	0	19.33	84.6%	18	39	46.2%	74.4%	9.03	15	21	71.4%	10	11	90.9%	3	4	1	5	1	1	50.0%	0	0		3	15.00	66.7%	33.3%	0.0%	4	75.0%	50.0%	4	50.0%
Katie Stark	1	0	9.00	0.0%	0	1	0.0%	0.0%	8.00	0	1	0.0%	0	0		0	1	0	0	0	0	0.0%	0	0		1	9.00	0.0%	0.0%	0.0%	0			0	
Kendyll Dellinger	2	0	14.00	50.0%	1	2	50.0%	50.0%	8.00	0	1	0.0%	0	0		0	0	0	0	0	1	0.0%	0	0		1	9.00	0.0%	0.0%	0.0%	0			0	
<b>HAWK FLIGHT</b>	<b>248</b>	<b>2</b>	<b>18.13</b>	<b>78.8%</b>	<b>88</b>	<b>250</b>	<b>35.2%</b>	<b>64.0%</b>	<b>8.74</b>	<b>109</b>	<b>162</b>	<b>67.3%</b>	<b>64</b>	<b>72</b>	<b>88.9%</b>	<b>27</b>	<b>48</b>	<b>11</b>	<b>23</b>	<b>7</b>	<b>19</b>	<b>50.0%</b>	<b>0</b>	<b>0</b>		<b>25</b>	<b>18.80</b>	<b>84.0%</b>	<b>32.0%</b>	<b>12.0%</b>	<b>25</b>	<b>84.0%</b>	<b>40.0%</b>	<b>25</b>	<b>36.0%</b>
Jordan Newham	34	0	17.85	85.3%	8	34	23.5%	64.7%	8.62	21	26	80.8%	14	14	100.0%	5	7	0	1	2	4	58.3%	0	0		4	18.50	100.0%	0.0%	0.0%	3	100.0%	33.3%	3	33.3%
Giselle Poss	50	0	18.34	84.0%	16	50	32.0%	70.0%	8.82	26	34	76.5%	18	19	94.7%	5	9	1	3	2	3	53.3%	0	0		5	15.40	60.0%	40.0%	0.0%	5	60.0%	40.0%	5	0.0%
Emily Rigney	50	0	20.26	86.0%	26	50	52.0%	68.0%	8.98	17	24	70.8%	8	8	100.0%	6	9	2	3	1	4	56.3%	0	0		5	19.60	80.0%	40.0%	20.0%	5	80.0%	60.0%	5	60.0%
Kristin Quah	13	1	17.08	71.4%	5	14	35.7%	71.4%	8.93	5	9	55.6%	3	5	60.0%	2	3	0	0	0	1	50.0%	0	0		1	29.00	100.0%	100.0%	100.0%	2	50.0%	50.0%	2	50.0%
Maria Bulanova	50	0	17.32	70.0%	18	50	36.0%	56.0%	8.60	17	32	53.1%	6	10	60.0%	6	11	3	6	2	5	50.0%	0	0		5	21.40	100.0%	40.0%	20.0%	5	100.0%	20.0%	5	60.0%
Adel Wahner	15	1	17.20	75.0%	4	16	25.0%	50.0%	8.44	8	12	66.7%	4	4	100.0%	1	3	3	5	0	0	50.0%	0	0		1	16.00	100.0%	0.0%	0.0%	2	100.0%	50.0%	2	0.0%
Katie Stark	20	0	19.25	85.0%	8	20	40.0%	75.0%	9.15	9	12	75.0%	7	7	100.0%	2	5	0	0	0	0	40.0%	0	0		2	14.50	50.0%	0.0%	0.0%	2	100.0%	50.0%	2	50.0%
Bryanna Leyen	16	0	14.25	56.3%	3	16	18.8%	50.0%	8.13	6	13	46.2%	4	5	80.0%	0	1	2	5	0	2	25.0%	0	0		2	20.00	100.0%	50.0%	0.0%	1	100.0%	0.0%	1	0.0%
<b>SOUTHLAND CHAMPIONSHIPS</b>	<b>250</b>	<b>0</b>	<b>19.14</b>	<b>83.6%</b>	<b>105</b>	<b>250</b>	<b>42.0%</b>	<b>69.6%</b>	<b>8.87</b>	<b>104</b>	<b>145</b>	<b>71.7%</b>	<b>63</b>	<b>69</b>	<b>91.3%</b>	<b>27</b>	<b>37</b>	<b>8</b>	<b>18</b>	<b>6</b>	<b>21</b>	<b>53.9%</b>	<b>0</b>	<b>0</b>		<b>25</b>	<b>18.72</b>	<b>76.0%</b>	<b>32.0%</b>	<b>20.0%</b>	<b>25</b>	<b>88.0%</b>	<b>36.0%</b>	<b>25</b>	<b>56.0%</b>
Jordan Newham	10	0	17.20	80.0%	2	10	20.0%	60.0%	8.60	6	8	75.0%	4	4	100.0%	2	2	0	2	0	0	50.0%	0	0		1	9.00	0.0%	0.0%	0.0%	1	100.0%	0.0%	1	0.0%
Giselle Poss	50	0	18.04	82.0%	18	50	36.0%	62.0%	8.66	23	32	71.9%	10	13	76.9%	6	9	4	4	3	6	68.4%	0	0		5	15.00	60.0%	20.0%	0.0%	5	100.0%	60.0%	5	20.0%
Emily Rigney	40	0	19.73	87.5%	19	40	47.5%	80.0%	9.23	16	21	76.2%	12	13	92.3%	4	7	0	0	0	1	50.0%	0	0		4	18.00	100.0%	25.0%	0.0%	4	75.0%	50.0%	4	50.0%
Kristin Quah	50	0	19.48	84.0%	23	50	46.0%	72.0%	8.96	19	27	70.4%	12	13	92.3%	6	6	1	5	0	3	50.0%	0	0		5	19.20	80.0%	40.0%	20.0%	5	80.0%	20.0%	5	#####
Maria Bulanova	50	0	18.30	78.0%	17	50	34.0%	60.0%	8.66	22	33	66.7%	12	13	92.3%	8	11	0	4	2	5	50.0%	0	0		5	17.60	60.0%	20.0%	20.0%	5	80.0%	0.0%	5	60.0%
Katie Stark	50	0	20.64	88.0%	26	50	52.0%	78.0%	8.96	18	24	75.0%	13	13	100.0%	1	2	3	3	1	6	45.5%	0	0		5	25.60	100.0%	60.0%	60.0%	5	100.0%	60.0%	5	60.0%
<b>Grand Total</b>	<b>6811</b>	<b>59</b>	<b>19.78</b>	<b>84.8%</b>	<b>3116</b>	<b>6870</b>	<b>45.4%</b>	<b>70.9%</b>	<b>8.94</b>	<b>2712</b>	<b>3754</b>	<b>72.2%</b>	<b>1606</b>	<b>1753</b>	<b>91.6%</b>	<b>619</b>	<b>943</b>	<b>349</b>	<b>657</b>	<b>138</b>	<b>401</b>	<b>55.3%</b>	<b>751</b>	<b>1655</b>	<b>45.4%</b>	<b>689</b>	<b>20.75</b>	<b>86.1%</b>	<b>51.8%</b>	<b>30.2%</b>	<b>685</b>	<b>83.2%</b>	<b>41.2%</b>	<b>685</b>	<b>48.5%</b>

**VANDERBILT UNIVERSITY**  
**INDIVIDUAL STATISTICS - SEASON TO DATE BY FORMAT**

division	(All)																																		
Event	(All)																																		
	All Bowlers																							Anchor Bowler					Leadoff Bowler			4th Bowler			
Row Labels	Sum of COMPLETE FRAMES	Sum of INCOMPLETE FRAMES	Sum of Average / Frame	Sum of Fill %	Sum of STRIKES	Sum of Strike Attempts	Sum of Striking %	Sum of 1stBall 9+ %	Sum of Avg1st Ball	Sum of SPARES	Sum of Spare Attempts	Sum of Spare %	Sum of 9CT Spares	Sum of 9CT Attmpts	Sum of 9CT Spare %	Sum of 8CT Spares	Sum of 8CT Attpts	Sum of 7CT Spares	Sum of 7CT Attpts	Sum of Other Spares	Sum of Other Attmpts	Sum of MultiPin Spare %	Sum of BKDBL Strikes	Sum of BKDBL Attempts	Sum of BKDBL %	Sum of 10thFrame Attempts	Sum of 10th Frame Avg	Sum of 10thFrame Fill%	Sum of 10thFrame Strike %	Sum of 10thFrame Double %	Sum of Leadoff Attempts	Sum of Leadoff Fill%	Sum of Leadoff Strike %	Sum of Setup Attempts	Sum of Setup%
<b>Baker</b>	<b>4176</b>	<b>54</b>	<b>19.75</b>	<b>84.8%</b>	<b>1894</b>	<b>4230</b>	<b>44.8%</b>	<b>70.4%</b>	<b>8.93</b>	<b>1692</b>	<b>2336</b>	<b>72.4%</b>	<b>996</b>	<b>1083</b>	<b>92.0%</b>	<b>390</b>	<b>594</b>	<b>226</b>	<b>420</b>	<b>80</b>	<b>239</b>	<b>55.5%</b>	<b>751</b>	<b>1655</b>	<b>45.4%</b>	<b>425</b>	<b>21.29</b>	<b>86.4%</b>	<b>56.2%</b>	<b>34.8%</b>	<b>421</b>	<b>83.1%</b>	<b>39.2%</b>	<b>421</b>	<b>49.4%</b>
Jordan Newham	402	7	18.20	79.7%	148	409	36.2%	62.8%	8.71	178	261	68.2%	93	109	85.3%	48	74	28	51	9	27	55.9%	53	124	42.7%	0					133	77.4%	34.6%	0	
Giselle Poss	830	12	20.31	87.4%	411	842	48.8%	74.9%	9.06	325	431	75.4%	206	220	93.6%	73	107	39	72	7	32	56.4%	167	355	47.0%	0				7	100.0%	28.6%	341	50.4%	
Emily Rigney	446	8	19.05	84.1%	179	454	39.4%	65.6%	8.77	203	275	73.8%	113	119	95.0%	46	68	31	59	13	29	57.7%	62	170	36.5%	0				17	76.5%	41.2%	0		
Kristin Quah	688	8	19.63	83.8%	311	696	44.7%	69.4%	8.91	272	385	70.6%	164	172	95.3%	64	100	35	72	9	41	50.7%	131	281	46.6%	45	20.18	82.2%	48.9%	26.7%	5	100.0%	0.0%	60	50.0%
Maria Bulanova	830	0	21.21	87.0%	449	830	54.1%	79.2%	9.15	273	381	71.7%	186	208	89.4%	40	76	31	56	16	41	50.3%	214	403	53.1%	379	21.42	86.8%	57.0%	35.9%	5	100.0%	80.0%	7	42.9%
Nicole Powell	42	2	16.60	63.6%	14	44	31.8%	56.8%	8.39	14	30	46.7%	8	11	72.7%	4	6	2	5	0	8	31.6%	2	12	16.7%	0				7	57.1%	28.6%	0		
Adel Wahner	600	8	19.28	85.4%	243	608	40.0%	64.6%	8.80	276	365	75.6%	138	150	92.0%	79	107	45	70	14	38	64.2%	74	192	38.5%	1	20.00	100.0%	100.0%	0.0%	170	86.5%	41.2%	1	0.0%
Katie Stark	338	9	19.04	83.6%	139	347	40.1%	67.1%	8.83	151	208	72.6%	88	94	93.6%	36	56	15	35	12	23	55.3%	48	118	40.7%	0				77	85.7%	44.2%	12	25.0%	
<b>Traditional</b>	<b>2635</b>	<b>5</b>	<b>19.82</b>	<b>84.9%</b>	<b>1222</b>	<b>2640</b>	<b>46.3%</b>	<b>71.7%</b>	<b>8.96</b>	<b>1020</b>	<b>1418</b>	<b>71.9%</b>	<b>610</b>	<b>670</b>	<b>91.0%</b>	<b>229</b>	<b>349</b>	<b>123</b>	<b>237</b>	<b>58</b>	<b>162</b>	<b>54.8%</b>	<b>0</b>	<b>0</b>	<b>0</b>	<b>264</b>	<b>19.89</b>	<b>85.6%</b>	<b>44.7%</b>	<b>22.7%</b>	<b>264</b>	<b>83.3%</b>	<b>44.3%</b>	<b>264</b>	<b>47.0%</b>
Jordan Newham	321	1	19.07	85.7%	126	322	39.1%	65.8%	8.83	150	196	76.5%	79	86	91.9%	45	61	17	32	9	17	64.5%	0	0		34	18.24	82.4%	26.5%	11.8%	31	93.5%	51.6%	31	35.5%
Giselle Poss	530	0	20.77	86.4%	286	530	54.0%	76.2%	9.09	172	244	70.5%	107	118	90.7%	38	58	18	36	9	32	51.6%	0	0		53	21.08	86.8%	60.4%	34.0%	53	84.9%	60.4%	53	50.9%
Emily Rigney	246	0	18.85	82.5%	101	246	41.1%	67.1%	8.84	102	145	70.3%	59	64	92.2%	27	40	10	23	6	18	53.1%	0	0		24	17.79	83.3%	37.5%	4.2%	25	76.0%	44.0%	25	40.0%
Kristin Quah	387	1	20.27	85.8%	190	388	49.0%	76.0%	9.05	143	198	72.2%	92	105	87.6%	30	41	16	30	5	22	54.8%	0	0		39	19.82	84.6%	48.7%	23.1%	39	74.4%	41.0%	39	59.0%
Maria Bulanova	530	0	20.20	84.3%	263	530	49.6%	75.5%	9.07	184	267	68.9%	122	137	89.1%	33	64	17	38	12	28	47.7%	0	0		53	20.70	86.8%	49.1%	28.3%	53	83.0%	39.6%	53	58.5%
Nicole Powell	20	0	17.65	80.0%	6	20	30.0%	65.0%	8.65	10	14	71.4%	7	7	100.0%	2	3	0	2	1	2	42.9%	0	0		2	24.50	100.0%	50.0%	50.0%	2	100.0%	0.0%	2	50.0%
Adel Wahner	373	1	19.52	85.6%	159	374	42.5%	66.6%	8.81	161	215	74.9%	84	90	93.3%	36	49	28	49	13	27	61.6%	0	0		35	20.29	91.4%	42.9%	22.9%	38	76.3%	31.6%	38	36.8%
Katie Stark	190	2	19.21	84.4%	80	192	41.7%	69.3%	8.88	82	112	73.2%	51	53	96.2%	15	28	13	19	3	12	52.5%	0	0		19	19.58	78.9%	31.6%	21.1%	20	100.0%	45.0%	20	30.0%
Bryanna Leyen	36	0	16.75	72.2%	10	36	27.8%	55.6%	8.44	16	26	61.5%	9	10	90.0%	3	5	4	8	0	3	43.8%	0	0		4	19.50	100.0%	25.0%	0.0%	3	100.0%	0.0%	3	33.3%
Kendyll Dellinger	2	0	14.00	50.0%	1	2	50.0%	50.0%	8.00	0	1	0.0%	0	0		0	0	0	0	0	1	0.0%	0	0		1	9.00	0.0%	0.0%	0.0%	0			0	
<b>Grand Total</b>	<b>6811</b>	<b>59</b>	<b>19.78</b>	<b>84.8%</b>	<b>3116</b>	<b>6870</b>	<b>45.4%</b>	<b>70.9%</b>	<b>8.94</b>	<b>2712</b>	<b>3754</b>	<b>72.2%</b>	<b>1606</b>	<b>1753</b>	<b>91.6%</b>	<b>619</b>	<b>943</b>	<b>349</b>	<b>657</b>	<b>138</b>	<b>401</b>	<b>55.3%</b>	<b>751</b>	<b>1655</b>	<b>45.4%</b>	<b>689</b>	<b>20.75</b>	<b>86.1%</b>	<b>51.8%</b>	<b>30.2%</b>	<b>685</b>	<b>83.2%</b>	<b>41.2%</b>	<b>685</b>	<b>48.5%</b>

**VANDERBILT UNIVERSITY**  
**INDIVIDUAL STATISTICS - BY FORMAT BY EVENT**

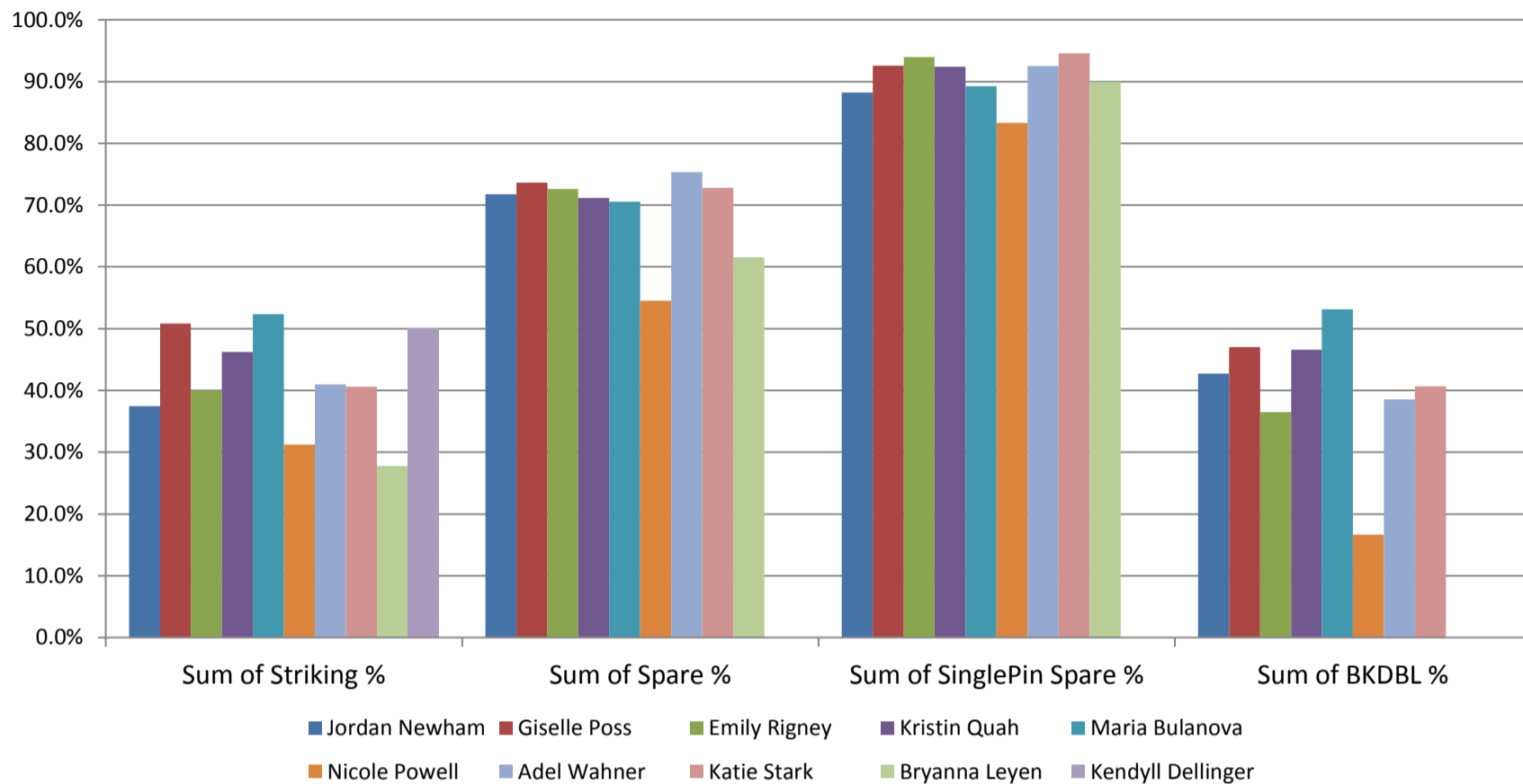
division	(All)	All Bowlers																								Anchor Bowler					Leadoff Bowler			4th Bowler	
Row Labels	Sum of COMPLETE FRAMES	Sum of INCOMPLETE FRAMES	Sum of Average / Frame	Sum of Fill %	Sum of STRIKES	Sum of Strike Attempts	Sum of Striking %	Sum of 1stBall 9+ %	Sum of Avg1st Ball	Sum of SPARES	Sum of Spare Attempts	Sum of Spare %	Sum of 9CT Spares	Sum of 9CT Attmpts	Sum of 9CT Spare %	Sum of 8CT Spares	Sum of 8CT Attpts	Sum of 7CT Spares	Sum of 7CT Attpts	Sum of Other Spares	Sum of Other Attmpts	Sum of MultiPin Spare %	Sum of BKDBL Strikes	Sum of BKDBL Attempts	Sum of BKDBL %	Sum of 10thFrame Attempts	Sum of 10th Frame Avg	Sum of 10thFrame Fill%	Sum of 10thFrame Strike %	Sum of 10thFrame Double %	Sum of Leadoff Attempts	Sum of Leadoff Fill%	Sum of Leadoff Strike %	Sum of Setup Attempts	Sum of Setup%
Jordan Newham	723	8	18.59	82.4%	274	731	37.5%	64.2%	8.76	328	457	71.8%	172	195	88.2%	93	135	45	83	18	44	59.5%	53	124	42.7%	34	18.24	82.4%	26.5%	11.8%	164	80.5%	37.8%	31	35.5%
Baker	402	7	18.20	79.7%	148	409	36.2%	62.8%	8.71	178	261	68.2%	93	109	85.3%	48	74	28	51	9	27	55.9%	53	124	42.7%	0				133	77.4%	34.6%	0		
KAT KLASH	47	1	19.21	83.3%	20	48	41.7%	66.7%	8.92	20	28	71.4%	12	12	100.0%	4	8	4	8	0	0	50.0%	7	15	46.7%	0				22	90.9%	45.5%	0		
WARHAWK CLASSIC	46	0	17.67	78.3%	17	46	37.0%	56.5%	8.57	19	29	65.5%	8	9	88.9%	6	8	5	9	0	3	55.0%	5	10	50.0%	0				21	71.4%	38.1%	0		
ALL STATE SUGAR BOWL	51	0	18.71	80.4%	17	51	33.3%	74.5%	8.84	24	34	70.6%	18	21	85.7%	4	5	2	4	0	4	46.2%	7	20	35.0%	0				0			0		
MID WINTER INVITATIONAL	56	1	18.41	84.2%	20	57	35.1%	66.7%	8.77	28	37	75.7%	15	18	83.3%	8	10	2	4	3	5	68.4%	5	15	33.3%	0				28	82.1%	28.6%	0		
KUTZTOWN INVITATIONAL	54	1	18.52	78.2%	22	55	40.0%	65.5%	8.91	21	33	63.6%	11	14	78.6%	8	14	1	2	1	3	52.6%	9	15	60.0%	0				23	69.6%	30.4%	0		
PRAIRIE VIEW A&M INVITE	38	0	17.08	76.3%	13	38	34.2%	52.6%	8.21	16	25	64.0%	6	7	85.7%	5	6	3	5	2	7	55.6%	4	7	57.1%	0				18	72.2%	27.8%	0		
LADYJACK CLASSIC	39	1	17.44	72.5%	14	40	35.0%	55.0%	8.68	15	26	57.7%	7	8	87.5%	4	10	4	7	0	1	44.4%	8	19	42.1%	0				0			0		
MUSIC CITY CLASSIC	19	1	17.00	70.0%	8	20	40.0%	65.0%	8.85	6	12	50.0%	4	5	80.0%	1	3	1	4	0	0	28.6%	3	6	50.0%	0				10	70.0%	50.0%	0		
HAWK FLIGHT	1	1	20.00	100.0%	1	2	50.0%	50.0%	9.00	1	1	100.0%	0	0		1	1	0	0	0	0	100.0%	0	0		0				1	100.0%	100.0%	0		
SOUTHLAND CHAMPIONSHIP	51	1	18.53	84.6%	16	52	30.8%	59.6%	8.58	28	36	77.8%	12	15	80.0%	7	9	6	8	3	4	76.2%	5	17	29.4%	0				10	80.0%	20.0%	0		
Traditional	321	1	19.07	85.7%	126	322	39.1%	65.8%	8.83	150	196	76.5%	79	86	91.9%	45	61	17	32	9	17	64.5%	0	0		34	18.24	82.4%	26.5%	11.8%	31	93.5%	51.6%	31	35.5%
KAT KLASH	50	0	17.80	78.0%	21	50	42.0%	64.0%	8.92	18	29	62.1%	8	11	72.7%	6	11	4	7	0	0	55.6%	0	0		5	13.20	40.0%	20.0%	0.0%	5	80.0%	60.0%	5	0.0%
WARHAWK CLASSIC	50	0	19.36	82.0%	21	50	42.0%	66.0%	8.96	20	29	69.0%	10	12	83.3%	9	13	1	2	0	2	58.8%	0	0		5	19.00	80.0%	40.0%	20.0%	5	80.0%	20.0%	5	60.0%
ALL STATE SUGAR BOWL	44	0	20.64	93.2%	23	44	52.3%	72.7%	9.05	18	21	85.7%	9	9	100.0%	4	5	4	5	1	2	75.0%	0	0		5	21.60	100.0%	40.0%	20.0%	4	100.0%	75.0%	4	50.0%
MID WINTER INVITATIONAL	16	0	16.06	75.0%	1	16	6.3%	43.8%	7.94	11	15	73.3%	6	6	100.0%	2	2	2	5	1	2	55.6%	0	0		3	19.33	100.0%	0.0%	0.0%	1	100.0%	0.0%	1	0.0%
KUTZTOWN INVITATIONAL	40	0	19.28	87.5%	14	40	35.0%	65.0%	8.88	21	26	80.8%	11	12	91.7%	7	10	2	3	1	1	71.4%	0	0		4	18.75	100.0%	50.0%	0.0%	4	100.0%	50.0%	4	50.0%
PRAIRIE VIEW A&M INVITE	50	0	19.68	90.0%	22	50	44.0%	64.0%	8.72	23	28	82.1%	10	10	100.0%	7	8	3	5	3	5	72.2%	0	0		5	16.00	80.0%	0.0%	0.0%	5	100.0%	80.0%	5	40.0%
LADYJACK CLASSIC	10	0	23.40	100.0%	6	10	60.0%	90.0%	9.50	4	4	100.0%	3	3	100.0%	1	1	0	0	0	0	100.0%	0	0		1	26.00	100.0%	100.0%	100.0%	1	100.0%	0.0%	1	100.0%
MUSIC CITY CLASSIC	17	1	19.53	88.9%	8	18	44.4%	72.2%	8.89	8	10	80.0%	4	5	80.0%	2	2	1	2	1	1	80.0%	0	0		1	29.00	100.0%	100.0%	100.0%	2	100.0%	100.0%	2	0.0%
HAWK FLIGHT	34	0	17.85	85.3%	8	34	23.5%	64.7%	8.62	21	26	80.8%	14	14	100.0%	5	7	0	1	2	4	58.3%	0	0		4	18.50	100.0%	0.0%	0.0%	3	100.0%	33.3%	3	33.3%
SOUTHLAND CHAMPIONSHIP	10	0	17.20	80.0%	2	10	20.0%	60.0%	8.60	6	8	75.0%	4	4	100.0%	2	2	0	2	0	0	50.0%	0	0		1	9.00	0.0%	0.0%	0.0%	1	100.0%	0.0%	1	0.0%
Giselle Poss	1360	12	20.49	87.0%	697	1372	50.8%	75.4%	9.08	497	675	73.6%	313	338	92.6%	111	165	57	108	16	64	54.6%	167	355	47.0%	53	21.08	86.8%	60.4%	34.0%	60	86.7%	56.7%	394	50.5%
Baker	830	12	20.31	87.4%	411	842	48.8%	74.9%	9.06	325	431	75.4%	206	220	93.6%	73	107	39	72	7	32	56.4%	167	355	47.0%	0				7	100.0%	28.6%	341	50.4%	
KAT KLASH	94	2	20.94	88.5%	52	96	54.2%	75.0%	9.09	33	44	75.0%	20	20	100.0%	9	12	4	6	0	6	54.2%	22	36	61.1%	0				0			12	66.7%	
WARHAWK CLASSIC	81	1	21.14	91.5%	45	82	54.9%	84.1%	9.26	30	37	81.1%	23	24	95.8%	3	4	4	8	0	1	53.8%	20	35	57.1%	0				0			41	46.3%	
ALL STATE SUGAR BOWL	85	2	20.49	86.2%	44	87	50.6%	75.9%	9.01	31	43	72.1%	19	22	86.4%	4	7	8	11	0	3	57.1%	14	39	35.9%	0				0			32	53.1%	
MID WINTER INVITATIONAL	86	1	18.48	81.6%	30	87	34.5%	73.6%	8.90	41	57	71.9%	30	34	88.2%	7	12	2	7	2	4	47.8%	10	34	29.4%	0				0			43	37.2%	
KUTZTOWN INVITATIONAL	94	2	21.09	88.5%	53	96	55.2%	79.2%	9.23	32	43	74.4%	21	23	91.3%	7	12	3	6	1	2	55.0%	25	45	55.6%	0				0			48	54.2%	
PRAIRIE VIEW A&M INVITE	72	1	20.89	89.0%	40	73	54.8%	76.7%	9.19	25	33	75.8%	16	16	100.0%	9	11	0	3	0	3	52.9%	16	33	48.5%	0				0			36	47.2%	
LADYJACK CLASSIC	88	0	20.26	87.5%	45	88	51.1%	72.7%	8.99	32	43	74.4%	19	19	100.0%	7	9	5	10	1	5	54.2%	18	35	51.4%	0				0			44	65.9%	
MUSIC CITY CLASSIC	84	1	19.67	83.5%	37	85	43.5%	72.9%	9.02	34	48	70.8%	22	25	88.0%	8	13	4	8	0	2	52.2%	17	42	40.5%	0				0			39	43.6%	
HAWK FLIGHT	77	1	20.31	91.0%	37	78	47.4%	69.2%	9.04	34	41	82.9%	16	17	94.1%	12	16	5	6	1	2	75.0%	16	35	45.7%	0				0			39	53.8%	
SOUTHLAND CHAMPIONSHIP	69	1	19.68	87.1%	28	70	40.0%	68.6%	8.87	33	42	78.6%	20	20	100.0%	7	11	4	7	2	4	59.1%	9	21	42.9%	0				7	100.0%	28.6%	7	28.6%	
Traditional	530	0	20.77	86.4%	286	530	54.0%	76.2%	9.09	172	244	70.5%	107	118	90.7%	38	58	18	36	9	32	51.6%	0	0		53	21.08	86.8%	60.4%	34.0%	53	84.9%	60.4%	53	50.9%
KAT KLASH	50	0	21.66	88.0%	31	50	62.0%	74.0%	9.16	13	19	68.4%	6	6	100.0%	5	7	1	2	1	4	53.8%	0	0		5	16.40	40.0%	40.0%	40.0%	5	80.0%	80.0%	5	20.0%
WARHAWK CLASSIC	50	0	22.16	92.0%	33	50	66.0%	88.0%	9.42	13	17	76.5%	10	11	90.9%	2	2	1	3	0	1	50.0%	0	0		5	19.60	100.0%	80.0%	0.0%	5	100.0%	80.0%	5	80.0%
ALL STATE SUGAR BOWL	60	0	22.18	90.0%	35	60	58.3%	90.0%	9.38	19	25	76.0%	18	19	94.7%	0	2	1	2	0	2	16.7%	0	0		6	27.67	100.0%	83.3%						

Row Labels	Sum of COMPLETE FRAMES	Sum of INCOMPLETE FRAMES	Sum of Average / Frame	Sum of Fill %	Sum of STRIKES	Sum of Strike Attempts	Sum of Striking %	Sum of 1stBall 9+ %	Sum of Avg1st Ball	Sum of SPARES	Sum of Spare Attempts	Sum of Spare %	Sum of 9CT Spares	Sum of 9CT Atmpts	Sum of 9CT Spare %	Sum of 8CT Spares	Sum of 8CT Attpts	Sum of 7CT Spares	Sum of 7CT Attpts	Sum of Other Spares	Sum of Other Atmpts	Sum of MultiPin Spare %	Sum of BKDBL Strikes	Sum of BKDBL Attempts	Sum of BKDBL %	Sum of 10thFrame Attempts	Sum of 10th Frame Avg	Sum of 10thFrame Fill%	Sum of 10thFrame Strike %	Sum of 10thFrame Double %	Sum of Leadoff Attempts	Sum of Leadoff Fill%	Sum of Leadoff Strike %	Sum of Setup Attempts	Sum of Setup%	
MID WINTER INVITATIONAL	50	0	19.64	82.0%	25	50	50.0%	62.0%	8.74	16	25	64.0%	5	6	83.3%	5	7	4	6	2	6	57.9%	0	0		5	24.60	100.0%	100.0%	60.0%	5	100.0%	80.0%	5	40.0%	
KUTZTOWN INVITATIONAL	60	0	24.08	93.3%	46	60	76.7%	91.7%	9.63	10	14	71.4%	8	9	88.9%	2	3	0	1	0	1	40.0%	0	0		6	20.00	100.0%	50.0%	16.7%	6	100.0%	100.0%	6	83.3%	
PRAIRIE VIEW A&M INVITE	60	0	21.02	85.0%	34	60	56.7%	78.3%	9.00	17	26	65.4%	11	13	84.6%	3	4	2	4	1	5	46.2%	0	0		6	24.83	100.0%	83.3%	50.0%	6	66.7%	33.3%	6	83.3%	
LADYJACK CLASSIC	50	0	19.98	80.0%	24	50	48.0%	74.0%	8.98	16	26	61.5%	13	13	100.0%	3	5	0	4	0	4	23.1%	0	0		5	24.80	100.0%	80.0%	60.0%	5	60.0%	60.0%	5	20.0%	
MUSIC CITY CLASSIC	50	0	19.62	86.0%	24	50	48.0%	66.0%	9.00	19	26	73.1%	8	9	88.9%	7	10	4	7	0	0	64.7%	0	0		5	20.60	100.0%	20.0%	20.0%	5	100.0%	60.0%	5	60.0%	
HAWK FLIGHT	50	0	18.34	84.0%	16	50	32.0%	70.0%	8.82	26	34	76.5%	18	19	94.7%	5	9	1	3	2	3	53.3%	0	0		5	15.40	60.0%	40.0%	0.0%	5	60.0%	40.0%	5	0.0%	
SOUTHLAND CHAMPIONSHIP	50	0	18.04	82.0%	18	50	36.0%	62.0%	8.66	23	32	71.9%	10	13	76.9%	6	9	4	4	3	6	68.4%	0	0		5	15.00	60.0%	20.0%	0.0%	5	100.0%	60.0%	5	20.0%	
Emily Rigney	692	8	18.98	83.6%	280	700	40.0%	66.1%	8.80	305	420	72.6%	172	183	94.0%	73	108	41	82	19	47	56.1%	62	170	36.5%	24	17.79	83.3%	37.5%	4.2%	42	76.2%	42.9%	25	40.0%	
Baker	446	8	19.05	84.1%	179	454	39.4%	65.6%	8.77	203	275	73.8%	113	119	95.0%	46	68	31	59	13	29	57.7%	62	170	36.5%	0					17	76.5%	41.2%	0		
KAT KLASH	72	0	16.38	73.6%	19	72	26.4%	47.2%	8.33	34	53	64.2%	13	15	86.7%	11	15	8	18	2	5	55.3%	9	31	29.0%	0						0			0	
WARHAWK CLASSIC	59	1	20.12	90.0%	25	60	41.7%	71.7%	8.90	29	35	82.9%	17	18	94.4%	7	9	4	5	1	3	70.6%	9	23	39.1%	0						0			0	
ALL STATE SUGAR BOWL	23	1	17.57	83.3%	6	24	25.0%	62.5%	8.63	14	18	77.8%	9	9	100.0%	2	5	2	2	1	2	55.6%	2	10	20.0%	0						7	57.1%	42.9%	0	
MID WINTER INVITATIONAL	39	1	18.21	82.5%	13	40	32.5%	70.0%	8.58	20	27	74.1%	15	15	100.0%	3	3	1	5	1	4	41.7%	4	11	36.4%	0						0			0	
KUTZTOWN INVITATIONAL	7	1	14.71	62.5%	1	8	12.5%	37.5%	7.75	4	7	57.1%	2	2	100.0%	1	2	1	1	0	2	40.0%	1	4	25.0%	0						0			0	
PRAIRIE VIEW A&M INVITE	23	0	18.52	82.6%	8	23	34.8%	56.5%	8.65	11	15	73.3%	4	5	80.0%	4	5	2	4	1	1	70.0%	3	7	42.9%	0						0			0	
LADYJACK CLASSIC	45	1	19.64	82.6%	19	46	41.3%	63.0%	8.80	19	27	70.4%	9	10	90.0%	6	8	3	7	1	2	58.8%	7	22	31.8%	0						0			0	
MUSIC CITY CLASSIC	74	1	20.99	92.0%	34	75	45.3%	77.3%	9.09	35	41	85.4%	24	24	100.0%	4	9	5	6	2	2	64.7%	11	27	40.7%	0						10	90.0%	40.0%	0	
HAWK FLIGHT	77	1	20.55	88.5%	42	78	53.8%	74.4%	9.10	27	36	75.0%	16	16	100.0%	4	8	5	10	2	2	55.0%	13	26	50.0%	0						0			0	
SOUTHLAND CHAMPIONSHIP	27	1	17.37	78.6%	12	28	42.9%	60.7%	8.57	10	16	62.5%	4	5	80.0%	4	4	0	1	2	6	54.5%	3	9	33.3%	0						0			0	
Traditional	246	0	18.85	82.5%	101	246	41.1%	67.1%	8.84	102	145	70.3%	59	64	92.2%	27	40	10	23	6	18	53.1%	0	0		24	17.79	83.3%	37.5%	4.2%	25	76.0%	44.0%	25	40.0%	
KAT KLASH	4	0	13.00	50.0%	1	4	25.0%	50.0%	8.00	1	3	33.3%	1	1	100.0%	0	0	0	1	0	1	0.0%	0	0		0						1	0.0%	0.0%	1	0.0%
WARHAWK CLASSIC	36	0	17.08	77.8%	8	36	22.2%	58.3%	8.44	20	28	71.4%	12	13	92.3%	5	7	2	4	1	4	53.3%	0	0		3	19.00	100.0%	0.0%	0.0%	4	75.0%	25.0%	4	25.0%	
ALL STATE SUGAR BOWL	2	0	8.50	0.0%	0	2	0.0%	0.0%	7.50	0	2	0.0%	0	0		0	1	0	1	0	0	0.0%	0	0		1	9.00	0.0%	0.0%	0.0%	0			0		
MID WINTER INVITATIONAL	28	0	18.25	78.6%	8	28	28.6%	57.1%	8.54	14	20	70.0%	7	8	87.5%	4	5	3	5	0	2	58.3%	0	0		2	18.50	100.0%	50.0%	0.0%	3	66.7%	0.0%	3	33.3%	
KUTZTOWN INVITATIONAL	20	0	21.00	100.0%	10	20	50.0%	75.0%	9.20	10	10	100.0%	5	5	100.0%	4	4	1	1	0	0	100.0%	0	0		2	20.00	100.0%	100.0%	0.0%	2	100.0%	100.0%	2	100.0%	
PRAIRIE VIEW A&M INVITE	10	0	15.10	70.0%	2	10	20.0%	40.0%	7.90	5	8	62.5%	2	2	100.0%	1	1	1	3	1	2	50.0%	0	0		1	9.00	0.0%	0.0%	0.0%	1	100.0%	0.0%	1	0.0%	
LADYJACK CLASSIC	26	0	20.23	92.3%	13	26	50.0%	73.1%	9.04	11	13	84.6%	6	6	100.0%	3	4	0	1	2	2	71.4%	0	0		3	19.00	100.0%	66.7%	0.0%	2	100.0%	50.0%	2	0.0%	
MUSIC CITY CLASSIC	30	0	18.10	73.3%	14	30	46.7%	73.3%	8.93	8	16	50.0%	6	8	75.0%	0	2	1	4	1	2	25.0%	0	0		3	16.00	66.7%	33.3%	0.0%	3	66.7%	66.7%	3	33.3%	
HAWK FLIGHT	50	0	20.26	86.0%	26	50	52.0%	68.0%	8.98	17	24	70.8%	8	8	100.0%	6	9	2	3	1	4	56.3%	0	0		5	19.60	80.0%	40.0%	20.0%	5	80.0%	60.0%	5	60.0%	
SOUTHLAND CHAMPIONSHIP	40	0	19.73	87.5%	19	40	47.5%	80.0%	9.23	16	21	76.2%	12	13	92.3%	4	7	0	0	0	1	50.0%	0	0		4	18.00	100.0%	25.0%	0.0%	4	75.0%	50.0%	4	50.0%	
Kristin Quah	1075	9	19.86	84.5%	501	1084	46.2%	71.8%	8.96	415	583	71.2%	256	277	92.4%	94	141	51	102	14	63	52.0%	131	281	46.6%	84	20.01	83.3%	48.8%	25.0%	44	77.3%	36.4%	99	53.5%	
Baker	688	8	19.63	83.8%	311	696	44.7%	69.4%	8.91	272	385	70.6%	164	172	95.3%	64	100	35	72	9	41	50.7%	131	281	46.6%	45	20.18	82.2%	48.9%	26.7%	5	100.0%	0.0%	60	50.0%	
KAT KLASH	97	1	19.89	86.7%	46	98	46.9%	73.5%	8.98	39	52	75.0%	26	26	100.0%	7	10	5	10	1	6	50.0%	17	40	42.5%	5	19.40	80.0%	40.0%	20.0%	0			37	54.1%	
ALL STATE SUGAR BOWL	86	1	20.79	83.9%	47	87	54.0%	71.3%	9.06	26	40	65.0%	15	15	100.0%	7	14	4	6	0	5	44.0%	17	32	53.1%	0						0			11	63.6%
MID WINTER INVITATIONAL	52	1	18.46	79.2%	21	53	39.6%	60.4%	8.72	21	32	65.6%	10	11	90.9%	6	9	5	9	0	3	52.4%	10	20	50.0%	0						0			0	
KUTZTOWN INVITATIONAL	93	1	20.72	90.4%	44	94	46.8%	68.1%	9.06	41	50	82.0%	20	20	100.0%	18	22	3	8	0	0	70.0%	28	44	63.6%	0						5	100.0%	0.0%	0	
PRAIRIE VIEW A&M INVITE	72	1	20.08	89.0%	33	73	45.2%	75.3%	9.07	32	40	80.0%	21	22	95.5%	6	9	5	8	0	1	61.1%	12	25	48.0%	0						0			0	
LADYJACK CLASSIC	83	1	19.17	81.0%	34	84	40.5%	66.7%	8.79	34	50	68.0%	21	22	95.5%	6	14	4	7	3	7	46.4%	10	32	31.3%	0						0			0	
MUSIC CITY CLASSIC	84	1	20.43	84.7%	47	85	55.3%	82.4%	9.15	25	38	65.8%	21	23	91.3%	1	2	2	8	1	5	26.7%	20	32	62.5%	23	21.70	91.3%	60.9%	30.4%	0			3	66.7%	
HAWK FLIGHT	61	1	18.21	80.6%	21	62	33.9%	59.7%	8.63	29	41	70.7%	15	16	93.8%	8	10	5	11	1	4	56.0%	9	32	28.1%	0						0			0	
SOUTHLAND CHAMPIONSHIP	60	0	17.28	71.7%	18	60	30.0%	58.3%	8.43	25	42	59.5%	15	17	88.2%	5	10	2	5	3	10	40.0%	8	24	33.3%	17	18.35	70.6%	35.3%	23.5%	0			9	11.1%	
Traditional	387	1	20.27	85.8%	190	388	49.0%	76.0%	9.05	143	198	72.2%	92	105	87.6%	30	41	16	30	5	22	54.8%	0	0		39	19.82	84.6%	48.7%	23.1%	39	74.4%	41.0%	39	59.0%	
KAT KLASH	50	0	22.30	86.0%	29	50	58.0%	82.0%	9.30	14	21	66.7%	11	12	91.7%	2	5	1	3	0	1	33.3%	0	0		5	26.80	100.0%	80.0%	80.0%	5	80.0%	40.0%	5	40.0%	
ALL STATE SUGAR BOWL	60	0	22.38	91.7%	39	60	65.0%	86.7%	9.43	16	21	76.2%	11	13	84.6%	5	5	0	1	0	2	62.5%	0	0		6	18.00	83.3%	33.3%	0.0%	6	83.3%	66.7%	6	66.7%	
MID WINTER INVITATIONAL	10	0	17.80	80.0%																																

Row Labels	Sum of COMPLETE FRAMES	Sum of INCOMPLETE FRAMES	Sum of Average / Frame	Sum of Fill %	Sum of STRIKES	Sum of Strike Attempts	Sum of Striking %	Sum of 1stBall 9+ %	Sum of Avg1st Ball	Sum of SPARES	Sum of Spare Attempts	Sum of Spare %	Sum of 9CT Spares	Sum of 9CT Atmpts	Sum of 9CT Spare %	Sum of 8CT Spares	Sum of 8CT Attpts	Sum of 7CT Spares	Sum of 7CT Attpts	Sum of Other Spares	Sum of Other Atmpts	Sum of MultiPin Spare %	Sum of BKDBL Strikes	Sum of BKDBL Attempts	Sum of BKDBL %	Sum of 10thFrame Attempts	Sum of 10th Frame Avg	Sum of 10thFrame Fill%	Sum of 10thFrame Strike %	Sum of 10thFrame Double %	Sum of Leadoff Attempts	Sum of Leadoff Fill%	Sum of Leadoff Strike %	Sum of Setup Attempts	Sum of Setup%
PRAIRIE VIEW A&M INVITE	60	0	19.97	81.7%	32	60	53.3%	76.7%	9.03	17	28	60.7%	11	14	78.6%	3	5	1	3	2	6	42.9%	0	0		6	17.33	66.7%	50.0%	16.7%	6	66.7%	33.3%	6	83.3%
LADYJACK CLASSIC	40	0	18.25	85.0%	14	40	35.0%	57.5%	8.55	20	26	76.9%	9	9	100.0%	4	7	5	6	2	4	64.7%	0	0		4	16.00	75.0%	25.0%	0.0%	4	75.0%	25.0%	4	25.0%
MUSIC CITY CLASSIC	50	0	21.34	94.0%	25	50	50.0%	88.0%	9.22	22	25	88.0%	18	19	94.7%	1	1	2	3	1	2	66.7%	0	0		5	21.40	100.0%	60.0%	20.0%	5	100.0%	60.0%	5	80.0%
HAWK FLIGHT	13	1	17.08	71.4%	5	14	35.7%	71.4%	8.93	5	9	55.6%	3	5	60.0%	2	3	0	0	0	1	50.0%	0	0		1	29.00	100.0%	100.0%	100.0%	2	50.0%	50.0%	2	50.0%
SOUTHLAND CHAMPIONSHIP	50	0	19.48	84.0%	23	50	46.0%	72.0%	8.96	19	27	70.4%	12	13	92.3%	6	6	1	5	0	3	50.0%	0	0		5	19.20	80.0%	40.0%	20.0%	5	80.0%	20.0%	5	100.0%
<b>Maria Bulanova</b>	<b>1360</b>	<b>0</b>	<b>20.82</b>	<b>86.0%</b>	<b>712</b>	<b>1360</b>	<b>52.4%</b>	<b>77.7%</b>	<b>9.12</b>	<b>457</b>	<b>648</b>	<b>70.5%</b>	<b>308</b>	<b>345</b>	<b>89.3%</b>	<b>73</b>	<b>140</b>	<b>48</b>	<b>94</b>	<b>28</b>	<b>69</b>	<b>49.2%</b>	<b>214</b>	<b>403</b>	<b>53.1%</b>	<b>432</b>	<b>21.33</b>	<b>86.8%</b>	<b>56.0%</b>	<b>35.0%</b>	<b>58</b>	<b>84.5%</b>	<b>43.1%</b>	<b>60</b>	<b>56.7%</b>
<b>Baker</b>	<b>830</b>	<b>0</b>	<b>21.21</b>	<b>87.0%</b>	<b>449</b>	<b>830</b>	<b>54.1%</b>	<b>79.2%</b>	<b>9.15</b>	<b>273</b>	<b>381</b>	<b>71.7%</b>	<b>186</b>	<b>208</b>	<b>89.4%</b>	<b>40</b>	<b>76</b>	<b>31</b>	<b>56</b>	<b>16</b>	<b>41</b>	<b>50.3%</b>	<b>214</b>	<b>403</b>	<b>53.1%</b>	<b>379</b>	<b>21.42</b>	<b>86.8%</b>	<b>57.0%</b>	<b>35.9%</b>	<b>5</b>	<b>100.0%</b>	<b>80.0%</b>	<b>7</b>	<b>42.9%</b>
KAT KLASH	88	0	20.59	89.8%	49	88	55.7%	78.4%	9.11	30	39	76.9%	20	20	100.0%	2	6	7	9	1	4	52.6%	22	42	52.4%	44	19.89	86.4%	56.8%	20.5%	0			0	
WARHAWK CLASSIC	82	0	21.74	90.2%	48	82	58.5%	82.9%	9.22	26	34	76.5%	19	20	95.0%	1	3	4	7	2	4	50.0%	20	45	44.4%	41	21.32	87.8%	58.5%	34.1%	0			0	
ALL STATE SUGAR BOWL	87	0	22.55	83.9%	54	87	62.1%	82.8%	9.33	19	33	57.6%	16	18	88.9%	2	9	1	3	0	3	20.0%	29	50	58.0%	44	22.73	84.1%	61.4%	50.0%	0			0	
MID WINTER INVITATIONAL	87	0	21.17	86.2%	46	87	52.9%	75.9%	9.09	29	41	70.7%	18	20	90.0%	8	9	2	8	1	4	52.4%	14	30	46.7%	44	21.02	86.4%	56.8%	34.1%	0			0	
KUTZTOWN INVITATIONAL	96	0	22.76	93.8%	57	96	59.4%	86.5%	9.43	33	39	84.6%	25	26	96.2%	6	10	2	3	0	0	61.5%	32	53	60.4%	48	23.63	93.8%	66.7%	47.9%	0			0	
PRAIRIE VIEW A&M INVITE	73	0	21.08	87.7%	37	73	50.7%	84.9%	9.16	27	36	75.0%	22	25	88.0%	1	2	2	5	2	4	45.5%	25	40	62.5%	37	21.89	91.9%	62.2%	35.1%	0			0	
LADYJACK CLASSIC	88	0	21.77	86.4%	50	88	56.8%	80.7%	9.19	26	38	68.4%	19	21	90.5%	4	8	1	4	2	5	41.2%	25	45	55.6%	44	22.32	88.6%	61.4%	43.2%	0			0	
MUSIC CITY CLASSIC	85	0	20.87	85.9%	45	85	52.9%	82.4%	9.24	28	40	70.0%	21	25	84.0%	3	8	3	5	1	2	46.7%	20	40	50.0%	20	20.40	75.0%	55.0%	40.0%	0			0	
HAWK FLIGHT	78	0	19.01	79.5%	31	78	39.7%	61.5%	8.65	31	47	66.0%	13	17	76.5%	8	14	5	7	5	9	60.0%	14	37	37.8%	39	19.49	82.1%	38.5%	25.6%	0			0	
SOUTHLAND CHAMPIONSHIP	66	0	19.88	84.8%	32	66	48.5%	72.7%	8.94	24	34	70.6%	13	16	81.3%	5	7	4	5	2	6	61.1%	13	21	61.9%	18	19.50	83.3%	38.9%	16.7%	5	100.0%	80.0%	7	42.9%
<b>Traditional</b>	<b>530</b>	<b>0</b>	<b>20.20</b>	<b>84.3%</b>	<b>263</b>	<b>530</b>	<b>49.6%</b>	<b>75.5%</b>	<b>9.07</b>	<b>184</b>	<b>267</b>	<b>68.9%</b>	<b>122</b>	<b>137</b>	<b>89.1%</b>	<b>33</b>	<b>64</b>	<b>17</b>	<b>38</b>	<b>12</b>	<b>28</b>	<b>47.7%</b>	<b>0</b>	<b>0</b>		<b>53</b>	<b>20.70</b>	<b>86.8%</b>	<b>49.1%</b>	<b>28.3%</b>	<b>53</b>	<b>83.0%</b>	<b>39.6%</b>	<b>53</b>	<b>58.5%</b>
KAT KLASH	50	0	21.58	90.0%	29	50	58.0%	84.0%	9.34	16	21	76.2%	13	13	100.0%	2	4	1	4	0	0	37.5%	0	0		5	24.00	100.0%	80.0%	40.0%	5	80.0%	60.0%	5	40.0%
WARHAWK CLASSIC	50	0	21.12	90.0%	25	50	50.0%	70.0%	9.10	20	25	80.0%	9	10	90.0%	9	12	1	1	1	2	73.3%	0	0		5	20.20	60.0%	60.0%	60.0%	5	80.0%	20.0%	5	60.0%
ALL STATE SUGAR BOWL	60	0	23.57	95.0%	42	60	70.0%	91.7%	9.53	15	18	83.3%	13	13	100.0%	0	1	1	3	1	1	40.0%	0	0		6	19.50	83.3%	66.7%	16.7%	6	100.0%	83.3%	6	50.0%
MID WINTER INVITATIONAL	50	0	19.16	80.0%	26	50	52.0%	80.0%	9.10	14	24	58.3%	12	14	85.7%	1	4	0	1	1	5	20.0%	0	0		5	21.20	100.0%	40.0%	20.0%	5	60.0%	40.0%	5	80.0%
KUTZTOWN INVITATIONAL	60	0	20.20	86.7%	29	60	48.3%	80.0%	9.10	23	31	74.2%	17	19	89.5%	1	3	4	7	1	2	50.0%	0	0		6	19.17	100.0%	16.7%	0.0%	6	83.3%	50.0%	6	33.3%
PRAIRIE VIEW A&M INVITE	60	0	19.87	88.3%	26	60	43.3%	80.0%	9.07	27	34	79.4%	20	22	90.9%	3	5	3	5	1	2	58.3%	0	0		6	20.50	83.3%	66.7%	33.3%	6	66.7%	16.7%	6	66.7%
LADYJACK CLASSIC	50	0	20.22	88.0%	24	50	48.0%	82.0%	9.08	20	26	76.9%	15	17	88.2%	1	3	1	2	3	4	55.6%	0	0		5	19.60	80.0%	40.0%	20.0%	5	100.0%	40.0%	5	80.0%
MUSIC CITY CLASSIC	50	0	20.08	74.0%	27	50	54.0%	66.0%	9.02	10	23	43.5%	5	6	83.3%	2	10	3	5	0	2	29.4%	0	0		5	24.40	100.0%	60.0%	60.0%	5	80.0%	60.0%	5	60.0%
HAWK FLIGHT	50	0	17.32	70.0%	18	50	36.0%	56.0%	8.60	17	32	53.1%	6	10	60.0%	6	11	3	6	2	5	50.0%	0	0		5	21.40	100.0%	40.0%	20.0%	5	100.0%	20.0%	5	60.0%
SOUTHLAND CHAMPIONSHIP	50	0	18.30	78.0%	17	50	34.0%	60.0%	8.66	22	33	66.7%	12	13	92.3%	8	11	0	4	2	5	50.0%	0	0		5	17.60	60.0%	20.0%	20.0%	5	80.0%	0.0%	5	60.0%
<b>Nicole Powell</b>	<b>62</b>	<b>2</b>	<b>16.94</b>	<b>68.8%</b>	<b>20</b>	<b>64</b>	<b>31.3%</b>	<b>59.4%</b>	<b>8.47</b>	<b>24</b>	<b>44</b>	<b>54.5%</b>	<b>15</b>	<b>18</b>	<b>83.3%</b>	<b>6</b>	<b>9</b>	<b>2</b>	<b>7</b>	<b>1</b>	<b>10</b>	<b>34.6%</b>	<b>2</b>	<b>12</b>	<b>16.7%</b>	<b>2</b>	<b>24.50</b>	<b>100.0%</b>	<b>50.0%</b>	<b>50.0%</b>	<b>9</b>	<b>66.7%</b>	<b>22.2%</b>	<b>2</b>	<b>50.0%</b>
<b>Baker</b>	<b>42</b>	<b>2</b>	<b>16.60</b>	<b>63.6%</b>	<b>14</b>	<b>44</b>	<b>31.8%</b>	<b>56.8%</b>	<b>8.39</b>	<b>14</b>	<b>30</b>	<b>46.7%</b>	<b>8</b>	<b>11</b>	<b>72.7%</b>	<b>4</b>	<b>6</b>	<b>2</b>	<b>5</b>	<b>0</b>	<b>8</b>	<b>31.6%</b>	<b>2</b>	<b>12</b>	<b>16.7%</b>	<b>0</b>				<b>7</b>	<b>57.1%</b>	<b>28.6%</b>	<b>0</b>		
KAT KLASH	13	1	16.62	71.4%	4	14	28.6%	50.0%	8.29	6	10	60.0%	2	3	66.7%	3	3	1	2	0	2	57.1%	0	3	0.0%	0					7	57.1%	28.6%	0	
WARHAWK CLASSIC	25	1	17.56	65.4%	10	26	38.5%	61.5%	8.54	7	16	43.8%	5	6	83.3%	1	3	1	2	0	5	20.0%	2	6	33.3%	0					0			0	
MUSIC CITY CLASSIC	4	0	10.50	25.0%	0	4	0.0%	50.0%	7.75	1	4	25.0%	1	2	50.0%	0	0	0	1	0	1	0.0%	0	3	0.0%	0					0			0	
<b>Traditional</b>	<b>20</b>	<b>0</b>	<b>17.65</b>	<b>80.0%</b>	<b>6</b>	<b>20</b>	<b>30.0%</b>	<b>65.0%</b>	<b>8.65</b>	<b>10</b>	<b>14</b>	<b>71.4%</b>	<b>7</b>	<b>7</b>	<b>100.0%</b>	<b>2</b>	<b>3</b>	<b>0</b>	<b>2</b>	<b>1</b>	<b>2</b>	<b>42.9%</b>	<b>0</b>	<b>0</b>		<b>2</b>	<b>24.50</b>	<b>100.0%</b>	<b>50.0%</b>	<b>50.0%</b>	<b>2</b>	<b>100.0%</b>	<b>0.0%</b>	<b>2</b>	<b>50.0%</b>
WARHAWK CLASSIC	10	0	16.80	70.0%	2	10	20.0%	60.0%	8.50	5	8	62.5%	4	4	100.0%	1	2	0	1	0	1	25.0%	0	0		1	29.00	100.0%	100.0%	100.0%	1	100.0%	0.0%	1	100.0%
MUSIC CITY CLASSIC	10	0	18.50	90.0%	4	10	40.0%	70.0%	8.80	5	6	83.3%	3	3	100.0%	1	1	0	1	1	1	66.7%	0	0		1	20.00	100.0%	0.0%	0.0%	1	100.0%	0.0%	1	0.0%
<b>Adel Wahner</b>	<b>973</b>	<b>9</b>	<b>19.38</b>	<b>85.4%</b>	<b>402</b>	<b>982</b>	<b>40.9%</b>	<b>65.4%</b>	<b>8.81</b>	<b>437</b>	<b>580</b>	<b>75.3%</b>	<b>222</b>	<b>240</b>	<b>92.5%</b>	<b>115</b>	<b>156</b>	<b>73</b>	<b>119</b>	<b>27</b>	<b>65</b>	<b>63.2%</b>	<b>74</b>	<b>192</b>	<b>38.5%</b>	<b>36</b>	<b>20.28</b>	<b>91.7%</b>	<b>44.4%</b>	<b>22.2%</b>	<b>208</b>	<b>84.6%</b>	<b>39.4%</b>	<b>39</b>	<b>35.9%</b>
<b>Baker</b>	<b>600</b>	<b>8</b>	<b>19.28</b>	<b>85.4%</b>	<b>243</b>	<b>608</b>	<b>40.0%</b>	<b>64.6%</b>	<b>8.80</b>	<b>276</b>	<b>365</b>	<b>75.6%</b>	<b>138</b>	<b>150</b>	<b>92.0%</b>	<b>79</b>	<b>107</b>	<b>45</b>	<b>70</b>	<b>14</b>	<b>38</b>	<b>64.2%</b>	<b>74</b>	<b>192</b>	<b>38.5%</b>	<b>1</b>	<b>20.00</b>	<b>100.0%</b>	<b>100.0%</b>	<b>0.0%</b>	<b>170</b>	<b>86.5%</b>	<b>41.2%</b>	<b>1</b>	<b>0.0%</b>
KAT KLASH	57	1	19.11	81.0%	25	58	43.1%	62.1%	8.69	22	33	66.7%	9	11	81.8%	8	10	2	5	3	7	59.1%	4	19	21.1%	0					20	70.0%	45.0%	0	
WARHAWK CLASSIC	67	1	18.36	85.3%																															

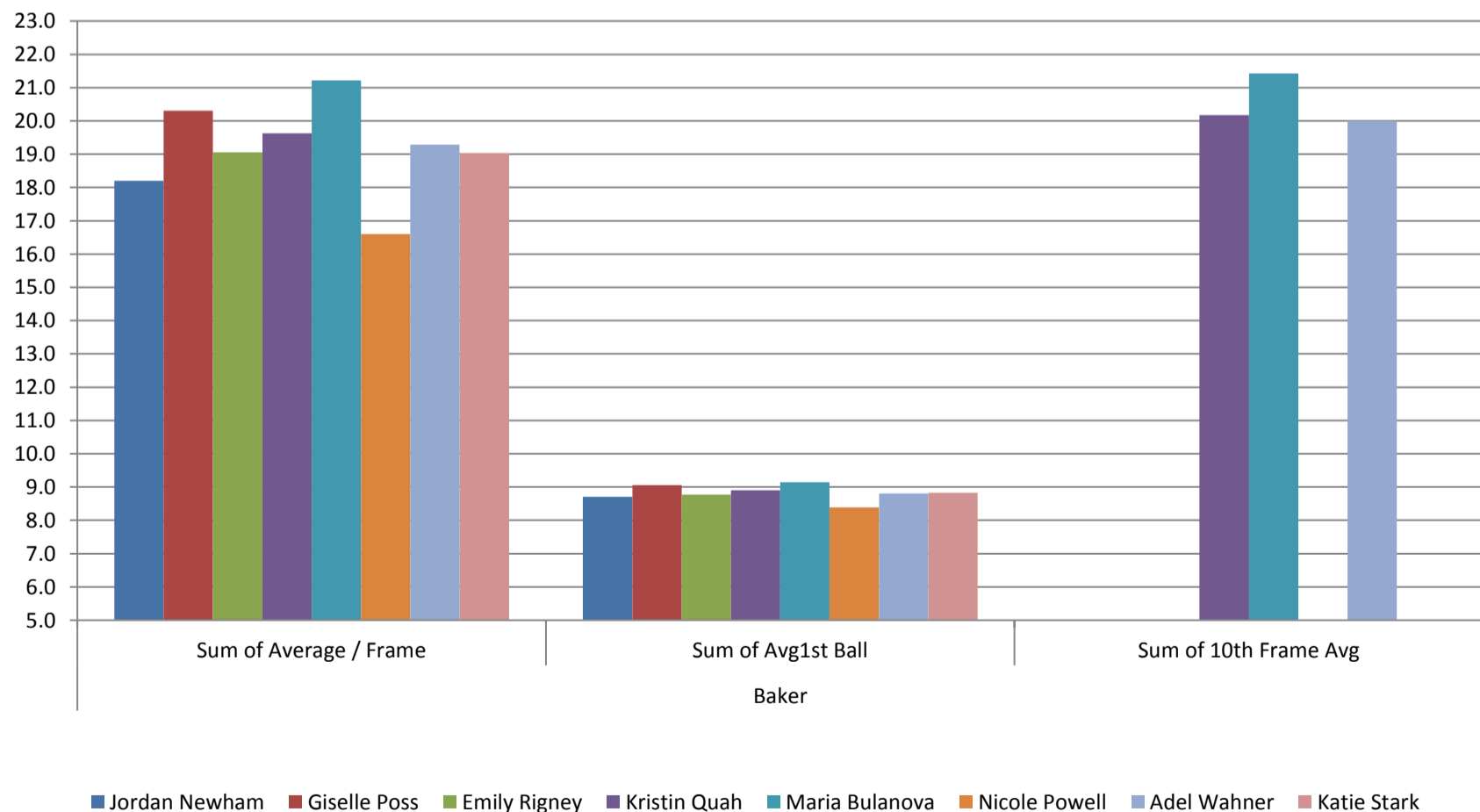
Row Labels	Sum of COMPLETE FRAMES	Sum of INCOMPLETE FRAMES	Sum of Average / Frame	Sum of Fill %	Sum of STRIKES	Sum of Strike Attempts	Sum of Striking %	Sum of 1stBall 9+ %	Sum of Avg1st Ball	Sum of SPARES	Sum of Spare Attempts	Sum of Spare %	Sum of 9CT Spares	Sum of 9CT Attmpts	Sum of 9CT Spare %	Sum of 8CT Spares	Sum of 8CT Attpts	Sum of 7CT Spares	Sum of 7CT Attpts	Sum of Other Spares	Sum of Other Attmpts	Sum of MultiPin Spare %	Sum of BKDBL Strikes	Sum of BKDBL Attempts	Sum of BKDBL %	Sum of 10thFrame Attempts	Sum of 10th Frame Avg	Sum of 10thFrame Fill%	Sum of 10thFrame Strike %	Sum of 10thFrame Double %	Sum of Leadoff Attempts	Sum of Leadoff Fill%	Sum of Leadoff Strike %	Sum of Setup Attempts	Sum of Setup %
HAWK FLIGHT	76	0	18.80	84.2%	26	76	34.2%	61.8%	8.72	38	50	76.0%	20	21	95.2%	8	14	8	12	2	3	62.1%	2	16	12.5%	0					38	89.5%	34.2%	0	
SOUTHLAND CHAMPIONSHIP	3	1	11.67	50.0%	0	4	0.0%	25.0%	7.75	2	4	50.0%	1	1	100.0%	0	1	1	2	0	0	33.3%	0	1	0.0%	0					0			0	
<b>Traditional</b>	<b>373</b>	<b>1</b>	<b>19.52</b>	<b>85.6%</b>	<b>159</b>	<b>374</b>	<b>42.5%</b>	<b>66.6%</b>	<b>8.81</b>	<b>161</b>	<b>215</b>	<b>74.9%</b>	<b>84</b>	<b>90</b>	<b>93.3%</b>	<b>36</b>	<b>49</b>	<b>28</b>	<b>49</b>	<b>13</b>	<b>27</b>	<b>61.6%</b>	<b>0</b>	<b>0</b>		<b>35</b>	<b>20.29</b>	<b>91.4%</b>	<b>42.9%</b>	<b>22.9%</b>	<b>38</b>	<b>76.3%</b>	<b>31.6%</b>	<b>38</b>	<b>36.8%</b>
KAT KLASH	46	0	18.89	84.8%	19	46	41.3%	65.2%	8.76	20	27	74.1%	9	11	81.8%	6	6	4	6	1	4	68.8%	0	0		5	19.20	100.0%	60.0%	0.0%	4	100.0%	50.0%	4	0.0%
WARHAWK CLASSIC	40	0	21.50	90.0%	21	40	52.5%	70.0%	9.05	15	19	78.9%	7	7	100.0%	4	7	3	3	1	2	66.7%	0	0		4	21.00	100.0%	25.0%	25.0%	4	25.0%	0.0%	4	50.0%
ALL STATE SUGAR BOWL	38	0	20.24	78.9%	20	38	52.6%	68.4%	8.92	10	18	55.6%	5	6	83.3%	3	5	2	4	0	3	41.7%	0	0		3	22.33	66.7%	66.7%	66.7%	4	75.0%	25.0%	4	75.0%
MID WINTER INVITATIONAL	50	0	18.68	88.0%	17	50	34.0%	56.0%	8.52	27	33	81.8%	10	11	90.9%	7	7	7	11	3	4	77.3%	0	0		5	21.40	100.0%	20.0%	20.0%	5	60.0%	0.0%	5	40.0%
KUTZTOWN INVITATIONAL	45	0	18.64	84.4%	15	45	33.3%	68.9%	8.71	23	30	76.7%	16	16	100.0%	4	6	1	3	2	5	50.0%	0	0		4	22.50	100.0%	75.0%	25.0%	5	60.0%	0.0%	5	20.0%
PRAIRIE VIEW A&M INVITE	60	0	19.15	86.7%	25	60	41.7%	65.0%	8.77	27	35	77.1%	13	14	92.9%	6	9	4	6	4	6	66.7%	0	0		6	16.33	83.3%	16.7%	0.0%	6	100.0%	66.7%	6	33.3%
LADYJACK CLASSIC	40	0	21.25	90.0%	20	40	50.0%	75.0%	8.98	16	20	80.0%	10	10	100.0%	2	2	3	6	1	2	60.0%	0	0		4	26.75	100.0%	75.0%	75.0%	4	100.0%	50.0%	4	50.0%
MUSIC CITY CLASSIC	39	0	19.33	84.6%	18	39	46.2%	74.4%	9.03	15	21	71.4%	10	11	90.9%	3	4	1	5	1	1	50.0%	0	0		3	15.00	66.7%	33.3%	0.0%	4	75.0%	50.0%	4	50.0%
HAWK FLIGHT	15	1	17.20	75.0%	4	16	25.0%	50.0%	8.44	8	12	66.7%	4	4	100.0%	1	3	3	5	0	0	50.0%	0	0		1	16.00	100.0%	0.0%	0.0%	2	100.0%	50.0%	2	0.0%
<b>Katie Stark</b>	<b>528</b>	<b>11</b>	<b>19.10</b>	<b>83.9%</b>	<b>219</b>	<b>539</b>	<b>40.6%</b>	<b>67.9%</b>	<b>8.85</b>	<b>233</b>	<b>320</b>	<b>72.8%</b>	<b>139</b>	<b>147</b>	<b>94.6%</b>	<b>51</b>	<b>84</b>	<b>28</b>	<b>54</b>	<b>15</b>	<b>35</b>	<b>54.3%</b>	<b>48</b>	<b>118</b>	<b>40.7%</b>	<b>19</b>	<b>19.58</b>	<b>78.9%</b>	<b>31.6%</b>	<b>21.1%</b>	<b>97</b>	<b>88.7%</b>	<b>44.3%</b>	<b>32</b>	<b>28.1%</b>
<b>Baker</b>	<b>338</b>	<b>9</b>	<b>19.04</b>	<b>83.6%</b>	<b>139</b>	<b>347</b>	<b>40.1%</b>	<b>67.1%</b>	<b>8.83</b>	<b>151</b>	<b>208</b>	<b>72.6%</b>	<b>88</b>	<b>94</b>	<b>93.6%</b>	<b>36</b>	<b>56</b>	<b>15</b>	<b>35</b>	<b>12</b>	<b>23</b>	<b>55.3%</b>	<b>48</b>	<b>118</b>	<b>40.7%</b>	<b>0</b>				<b>77</b>	<b>85.7%</b>	<b>44.2%</b>	<b>12</b>	<b>25.0%</b>	
KAT KLASH	16	0	16.88	75.0%	5	16	31.3%	62.5%	8.56	7	11	63.6%	5	5	100.0%	1	2	1	2	0	2	33.3%	1	7	14.3%	0					0			0	
WARHAWK CLASSIC	44	2	18.68	80.4%	20	46	43.5%	65.2%	8.87	17	26	65.4%	9	10	90.0%	5	9	2	4	1	3	50.0%	9	18	50.0%	0					7	85.7%	57.1%	0	
ALL STATE SUGAR BOWL	65	0	19.78	81.5%	31	65	47.7%	73.8%	8.97	22	34	64.7%	15	17	88.2%	2	8	2	4	3	5	41.2%	11	19	57.9%	0					32	81.3%	40.6%	0	
MID WINTER INVITATIONAL	43	1	19.40	88.6%	16	44	36.4%	70.5%	8.77	23	28	82.1%	15	15	100.0%	4	4	2	6	2	3	61.5%	4	15	26.7%	0					0			0	
KUTZTOWN INVITATIONAL	36	1	19.25	86.5%	15	37	40.5%	56.8%	8.73	17	22	77.3%	6	6	100.0%	8	8	2	7	1	1	68.8%	3	10	30.0%	0					18	88.9%	44.4%	0	
PRAIRIE VIEW A&M INVITE	11	1	18.18	83.3%	4	12	33.3%	50.0%	8.58	6	8	75.0%	2	2	100.0%	3	3	1	3	0	0	66.7%	3	5	60.0%	0					0			0	
LADYJACK CLASSIC	5	1	14.20	66.7%	2	6	33.3%	50.0%	8.00	2	4	50.0%	1	1	100.0%	0	0	1	2	0	1	33.3%	1	3	33.3%	0					0			0	
MUSIC CITY CLASSIC	34	1	19.18	82.9%	14	35	40.0%	68.6%	8.91	15	21	71.4%	8	10	80.0%	4	7	1	2	2	2	63.6%	5	12	41.7%	0					7	85.7%	57.1%	0	
HAWK FLIGHT	15	1	21.27	100.0%	7	16	43.8%	68.8%	9.00	9	9	100.0%	4	4	100.0%	4	4	0	0	1	1	100.0%	2	4	50.0%	0					0			0	
SOUTHLAND CHAMPIONSHIP	69	1	18.67	82.9%	25	70	35.7%	70.0%	8.84	33	45	73.3%	23	24	95.8%	5	11	3	5	2	5	47.6%	9	25	36.0%	0					13	92.3%	38.5%	12	25.0%
<b>Traditional</b>	<b>190</b>	<b>2</b>	<b>19.21</b>	<b>84.4%</b>	<b>80</b>	<b>192</b>	<b>41.7%</b>	<b>69.3%</b>	<b>8.88</b>	<b>82</b>	<b>112</b>	<b>73.2%</b>	<b>51</b>	<b>53</b>	<b>96.2%</b>	<b>15</b>	<b>28</b>	<b>13</b>	<b>19</b>	<b>3</b>	<b>12</b>	<b>52.5%</b>	<b>0</b>	<b>0</b>		<b>19</b>	<b>19.58</b>	<b>78.9%</b>	<b>31.6%</b>	<b>21.1%</b>	<b>20</b>	<b>100.0%</b>	<b>45.0%</b>	<b>20</b>	<b>30.0%</b>
WARHAWK CLASSIC	14	0	20.86	92.9%	7	14	50.0%	64.3%	9.07	6	7	85.7%	2	2	100.0%	3	4	1	1	0	0	80.0%	0	0		2	20.00	100.0%	50.0%	0.0%	1	100.0%	0.0%	1	0.0%
ALL STATE SUGAR BOWL	16	0	20.63	81.3%	9	16	56.3%	87.5%	9.38	4	7	57.1%	3	5	60.0%	0	1	1	1	0	0	50.0%	0	0		1	30.00	100.0%	100.0%	100.0%	2	100.0%	50.0%	2	50.0%
MID WINTER INVITATIONAL	46	0	18.37	84.8%	14	46	30.4%	65.2%	8.76	25	32	78.1%	16	16	100.0%	4	8	5	7	0	1	56.3%	0	0		4	16.75	75.0%	25.0%	0.0%	5	100.0%	20.0%	5	0.0%
KUTZTOWN INVITATIONAL	20	1	17.65	81.0%	6	21	28.6%	61.9%	8.52	11	15	73.3%	7	7	100.0%	2	3	1	2	1	3	50.0%	0	0		2	14.50	50.0%	0.0%	0.0%	2	100.0%	50.0%	2	0.0%
LADYJACK CLASSIC	23	1	17.52	79.2%	10	24	41.7%	54.2%	8.58	9	14	64.3%	3	3	100.0%	3	4	2	5	1	2	54.5%	0	0		2	20.00	100.0%	0.0%	0.0%	3	100.0%	66.7%	3	33.3%
MUSIC CITY CLASSIC	1	0	9.00	0.0%	0	1	0.0%	0.0%	8.00	0	1	0.0%	0	0		0	1	0	0	0	0	0.0%	0	0		1	9.00	0.0%	0.0%	0.0%	0			0	
HAWK FLIGHT	20	0	19.25	85.0%	8	20	40.0%	75.0%	9.15	9	12	75.0%	7	7	100.0%	2	5	0	0	0	0	40.0%	0	0		2	14.50	50.0%	0.0%	0.0%	2	100.0%	50.0%	2	50.0%
SOUTHLAND CHAMPIONSHIP	50	0	20.64	88.0%	26	50	52.0%	78.0%	8.96	18	24	75.0%	13	13	100.0%	1	2	3	3	1	6	45.5%	0	0		5	25.60	100.0%	60.0%	60.0%	5	100.0%	60.0%	5	60.0%
<b>Bryanna Leyen</b>	<b>36</b>	<b>0</b>	<b>16.75</b>	<b>72.2%</b>	<b>10</b>	<b>36</b>	<b>27.8%</b>	<b>55.6%</b>	<b>8.44</b>	<b>16</b>	<b>26</b>	<b>61.5%</b>	<b>9</b>	<b>10</b>	<b>90.0%</b>	<b>3</b>	<b>5</b>	<b>4</b>	<b>8</b>	<b>0</b>	<b>3</b>	<b>43.8%</b>	<b>0</b>	<b>0</b>		<b>4</b>	<b>19.50</b>	<b>100.0%</b>	<b>25.0%</b>	<b>0.0%</b>	<b>3</b>	<b>100.0%</b>	<b>0.0%</b>	<b>3</b>	<b>33.3%</b>
<b>Traditional</b>	<b>36</b>	<b>0</b>	<b>16.75</b>	<b>72.2%</b>	<b>10</b>	<b>36</b>	<b>27.8%</b>	<b>55.6%</b>	<b>8.44</b>	<b>16</b>	<b>26</b>	<b>61.5%</b>	<b>9</b>	<b>10</b>	<b>90.0%</b>	<b>3</b>	<b>5</b>	<b>4</b>	<b>8</b>	<b>0</b>	<b>3</b>	<b>43.8%</b>	<b>0</b>	<b>0</b>		<b>4</b>	<b>19.50</b>	<b>100.0%</b>	<b>25.0%</b>	<b>0.0%</b>	<b>3</b>	<b>100.0%</b>	<b>0.0%</b>	<b>3</b>	<b>33.3%</b>
ALL STATE SUGAR BOWL	20	0	18.75	85.0%	7	20	35.0%	60.0%	8.70	10	13	76.9%	5	5	100.0%	3	4	2	3	0	1	62.5%	0	0		2	19.00	100.0%	0.0%	0.0%	2	100.0%	0.0%	2	50.0%
HAWK FLIGHT	16	0	14.25	56.3%	3	16	18.8%	50.0%	8.13	6	13	46.2%	4	5	80.0%	0	1	2	5	0	2	25.0%	0	0		2	20.00	100.0%	50.0%	0.0%	1	100.0%	0.0%	1	0.0%
<b>Kendyll Dellinger</b>	<b>2</b>	<b>0</b>	<b>14.00</b>	<b>50.0%</b>	<b>1</b>	<b>2</b>	<b>50.0%</b>	<b>50.0%</b>	<b>8.00</b>	<b>0</b>	<b>1</b>	<b>0.0%</b>	<b>0</b>	<b>0</b>		<b>0</b>	<b>0</b>	<b>0</b>	<b>0</b>	<b>0</b>	<b>1</b>	<b>0.0%</b>	<b>0</b>	<b>0</b>		<b>1</b>	<b>9.00</b>	<b>0.0%</b>	<b>0.0%</b>	<b>0.0%</b>	<b>0</b>			<b>0</b>	
<b>Traditional</b>	<b>2</b>	<b>0</b>	<b>14.00</b>	<b>50.0%</b>	<b>1</b>	<b>2</b>	<b>50.0%</b>	<b>50.0%</b>	<b>8.00</b>	<b>0</b>	<b>1</b>	<b>0.0%</b>	<b>0</b>	<b>0</b>		<b>0</b>	<b>0</b>	<b>0</b>	<b>0</b>	<b>0</b>	<b>1</b>	<b>0.0%</b>	<b>0</b>	<b>0</b>		<b>1</b>	<b>9.00</b>	<b>0.0%</b>	<b>0.0%</b>	<b>0.0%</b>	<b>0</b>			<b>0</b>	
MUSIC CITY CLASSIC	2	0	14.00	50.0%	1	2	50.0%	50.0%	8.00	0	1	0.0%	0	0		0	0	0	0	0	1	0.0%	0	0		1	9.00	0.0%	0.0%	0.0%	0			0	
<b>Grand Total</b>	<b>6811</b>	<b>59</b>	<b>19.78</b>	<b>84.8%</b>	<b>3116</b>	<b>6870</b>	<b>45.4%</b>	<b>70.9%</b>	<b>8.94</b>	<b>2712</b>	<b>3754</b>	<b>72.2%</b>																							

## VANDERBILT UNIVERSITY PLAYER STATISTICS REVIEW



Values

## VANDERBILT UNIVERSITY PLAYER STATISTICS BAKER REVIEW



FORMAT

Values