



VANDERBILT WOMEN'S BASKETBALL

| #AnchorDown | Game 1 | Game 2 |
|--------------------|--|--|
| Matchup | vs. #5/4 LSU (25-1, 13-1 SEC) | at Auburn (14-12, 4-10 SEC) |
| Date • Time | Thursday, Feb. 23 • 6:30 p.m. CT | Sunday, Feb. 26 • 3 p.m. CT |
| Site | Nashville, Tenn. • Memorial Gymnasium (14,316) | Auburn, Ala. • Neville Arena (9,121) |
| Series | Vanderbilt leads, 26-25 (H: 15-4; A: 4-17; N: 7-3) | Vanderbilt leads, 40-24 (H: 15-9; A: 10-11; N: 5-4) |
| TV | SEC Network+ • Andrew Allegretta and Drew Maddux | SEC Network • Brenda VanLengen and Holly Warlick |
| Radio | 95.9 FM/560 AM • Vanderbilt Athletics App • Jake Lyman | 95.9 FM/560 AM • Vanderbilt Athletics App • Jake Lyman |

Commodores By The Numbers

| | |
|-----|---|
| 1 | Vanderbilt as a team is shooting 74.1 percent from the free throw line, which ranks first in the conference. Bella Lachance, Marnelle Garraud, and Cijia Harbison are all shooting over 80 percent with Lahance leading the team with an 84.8 free throw percentage. |
| 2 | This week marks the final two regular season games for Vanderbilt. LSU and Vandy met in Baton Rouge early this season with the Tigers taking the contest 88-63. The last time the Dores claimed victory at home against the Tigers was back during the 2015-16 and 2016-17 seasons when they won back-to-back years. Since the 2010-11 campaign Vandy has a 5-1 home record against LSU. Sunday is the first meeting between Vandy and Auburn this season. Auburn is 11-10 when hosting the Dores and in the last six meetings at Auburn, Vandy is 3-3 dating back to the 2009-10 season. Auburn has won the last three meetings but all three games have been decided by less than 10 points (9 points max) in each. |
| 3 | All three of Vandy's conference wins this year have come at home. The Dores are 3-4 at home in conference play this season. |
| 5 | Cijia Harbison had dished out at least five assists 14 times this season. She is averaging 4.4 assists per game this season and is third in the SEC. She has tallied double-digits in assists in her last six games with a high of eight against Arkansas on Feb. 9. |
| 12 | Garraud has now scored in double figures in 12 straight games and 22 times this season. In her last four games, she is averaging 18 points per game. During those four games, she finished with a high of 23 points |
| 15 | Sacha Washington reached double figures in rebounding for the 15th time in her career. She has tallied six games this season with 10 or more rebounds. Against LSU this season she grabbed seven boards and in her last two games she grabbed 26 rebounds. She has been the team's leading rebounder 19 times this year. |
| 78 | Garraud's 78 3-pointers made leads the team and is first in the SEC while ranking 14th in the country. Since Jan 22 she has tallied multiple 3-points per game. South Carolina is the only conference team to hold her to one 3-pointer this season. |
| 249 | Vanderbilt has forced 486 turnovers with 237 off a steal and 249 of them being extra positions opponents have given the Dores this season. |

Last Time Out

February 16 - Something about Alabama brings out the best in Sacha Washington. The Vanderbilt sophomore scored a career-high 26 points and grabbed 11 rebounds, but it was not enough to overcome Alabama's 3-point shooting as the Crimson Tide handed the Commodores an 88-70 loss on Thursday night in Coleman Coliseum.

Washington finished 11 of 15 from the field and 4 of 6 from the free throw line to exceed her previous best point total. As a freshman last season, Washington scored a career-high 23 points against Alabama in Tuscaloosa and equaled that amount earlier this season with 23 points against Alabama A&M.

Cijia Harbison finished with 18 points and four assists for Vanderbilt (11-16, 2-11 SEC) while Marnelle Garraud had 14 points, five rebounds, three assists and three steals. Garraud, who entered the night as the SEC leader in 3-pointers made, finished 4 of 6 from deep to push her season total to 76.

But Alabama (20-6, 9-4 SEC) was dialed in from distance from the start. The Tide made 16 of 36 from behind the 3-point line. Aaliyah Nye finished with a team-high 17 points, including five 3-pointers. Brittany Davis scored 16 points and Hannah Barber added 14 for Alabama.

Washington sparked a Vanderbilt comeback in the second quarter, muscling inside for baskets as the Dores cut a 20-point lead to single digits. Washington's layup off a pretty assist from Harbison just before the buzzer capped a 9-0 run and pulled Vandy to within 40-34 at halftime. She scored 12 points in the second quarter on 5 of 6 shooting, completing two traditional three-point plays and grabbed three rebounds to finish with 14 points and six rebounds in the first half.

February 19 -Vanderbilt's Cijia Harbison found Marnelle Garraud streaking down the court for a layup to open the game against Kentucky. Demi Washington drained a 3-pointer to score the final points for the Commodores. Graduate guards Harbison and Garraud combined for 47 points as Vanderbilt used a half-straddling scoring blitz to pull away from the Wildcats in a 79-57 victory on Sunday afternoon at Memorial Gymnasium.

Vanderbilt (12-16, 3-11 SEC) embarked on a 24-2 run bridging the second and third quarters, including the first 14 points of the second half, to take control and move ahead of Kentucky (10-16, 2-12 SEC) in the SEC standings.

Harbison finished with a game-high 24 points on 8 of 17 shooting, five assists and four steals. Garraud scored 18 of her 23 points in the second half and was 9 of 17 from the field. It was the first time both have scored 20-plus points in the same game, and both finished with a game-high five assists.

Coming off a career-high scoring performance against Alabama, Vandy sophomore Sacha Washington had a season-best rebounding performance against Kentucky. Washington finished with 15 points and 15 rebounds for her second straight double-double.

The teams played a low-scoring first half, combining for 26 turnovers and missing 35 shot attempts. Sacha Washington helped put an end to a 7-0 Kentucky run in the first quarter by blocking two shots and then dishing a pretty bounce pass to a cutting Harbison for a layup to pull the Dores within 13-11.

Vandy exploded out of the gates in the second half with 14 straight points to expand the run to 24-2. Garraud launched the outburst with three consecutive layups to start the third quarter. Garraud finished the quarter with 14 points on 6 of 9 shooting.

The Dores outscored the Wildcats 28-13 in the third quarter for a 52-35 lead. Vanderbilt's lead peaked at 30 points midway through the fourth quarter. Demi Washington sealed her perfect 3 for 3 day from the field with a 3-pointer that concluded Vandy's scoring and gave the crowd one last chance to salute the seniors.

2022-23 Schedule and Results (12-16 • 3-11 SEC)

| | | | |
|----------------|---------------------------|---------------------|--------------------|
| Nov. 7 | at Western Kentucky | ESPN+ | W, 82-71 |
| Nov. 10 | Samford | SEC Network+ | W, 81-51 |
| Nov. 13 | at Columbia | ESPN+ | W, 74-63 |
| Nov. 15 | Tarleton State | SEC Network+ | W, 84-48 |
| Nov. 17 | Austin Peay | SEC Network+ | W, 70-61 |
| Nov. 20 | Saint Joseph's | SEC Network+ | L, 59-67 |
| Nov. 24 | vs. #13/11 NC State • | FloHoops | L, 73-82 |
| Nov. 25 | vs. Northern Iowa • | FloHoops | L, 62-65 |
| Nov. 29 | USC Upstate | SEC Network+ | W, 74-45 |
| Dec. 1 | at East Tennessee State | ESPN+ | L, 31-44 |
| Dec. 4 | UT Martin | SEC Network | L, 54-66 |
| Dec. 8 | at Louisiana Tech | ESPN+ | W, 75-70 OT |
| Dec. 18 | Lipscomb | SEC Network+ | W, 72-71 OT |
| Dec. 21 | Alabama A&M | SEC Network+ | W, 76-46 |
| Dec. 29 | Mississippi State* | SEC Network+ | L, 44-72 |
| Jan. 1 | at #9 LSU* | SEC Network+ | L, 63-88 |
| Jan. 5 | at Ole Miss* | SEC Network+ | L, 53-74 |
| Jan. 8 | Tennessee* | SEC Network | L, 71-84 |
| Jan. 16 | at Arkansas* | SEC Network | L, 81-84 |
| Jan. 19 | #1 South Carolina* | SEC Network | L, 48-96 |
| Jan. 22 | at Florida* | SEC Network+ | L, 55-73 |
| Jan. 29 | Texas A&M* | SEC Network | W, 88-79 |
| Feb. 2 | at Missouri* | SEC Network | L, 69-86 |
| Feb. 5 | Georgia* | SEC Network | L, 61-79 |
| Feb. 9 | Arkansas* | SEC Network | W, 78-70 |
| Feb. 12 | at Tennessee* | SEC Network+ | L, 56-89 |
| Feb. 16 | at Alabama* | SEC Network+ | L, 70-88 |
| Feb. 19 | Kentucky* | SEC Network+ | W, 79-57 |
| Feb. 23 | #5/4 LSU* | SEC Network+ | 6:30 p.m. |
| Feb. 26 | at Auburn* | SEC Network | 3 p.m. |
| March 1-5 | SEC Tournament •• | SEC Network | -- |

All times CT

* SEC game

• Women's Cancun Challenge (Cancun, Mexico)

•• SEC Tournament (Greenville, S.C.)



VANDERBILT WOMEN'S BASKETBALL

Roster

| No. | Name | Pos. | Cl. | Ht. | Hometown | High School |
|-----|-------------------|------|-----|------|---------------------|---------------------------|
| 2 | Jada Brown | G | Fr. | 5-8 | Bentonville, Ark. | Bentonville |
| 3 | Jordyn Cambridge | G | Gr. | 5-9 | Nashville, Tenn. | Ensworth |
| 5 | Yaubryon Chambers | F | Sr. | 6-1 | Murfreesboro, Tenn. | Providence Christian |
| 11 | Ciaja Harbison | G | Gr. | 5-6 | Louisville, Ky. | Male |
| 12 | Demi Washington | G | Sr. | 5-10 | Wake Forest, N.C. | New Hope (Md.) |
| 14 | Marnelle Garraud | G | Gr. | 5-7 | Lynn, Mass. | Nobles & Greenough School |
| 21 | Bella LaChance | G | Jr. | 5-6 | Davie, Fla. | St. Thomas Aquinas |
| 23 | Iyana Moore | G | So. | 5-8 | Murfreesboro, Tenn. | Blackman |
| 24 | Ryanne Allen | G | Fr. | 6-1 | Warminster, Pa. | Archbishop Wood |
| 35 | Sacha Washington | F | So. | 6-2 | Lawrenceville, Ga. | Collins Hill |

Coaching Staff

| | |
|------------------------------|--|
| Head Coach | Shea Ralph (UConn '01) • 2nd season |
| Associate Head Coach | Tom Garrick (Rhode Island '88) • 2nd season |
| Assistant Coach | Ashley Earley (Vanderbilt '05) • 2nd season |
| Assistant Coach | Kevin DeMille (UConn '13) • 2nd season |
| Chief of Staff | Christina Foggie (Vanderbilt '14) • 2nd season |
| Director • Operations | Chris Brann (Florida State, '03) • 2nd season |

Pronunciations

| | |
|-------------------|-------------------|
| Jada Brown | jay-duh |
| Yaubryon Chambers | yah-bree-on |
| Ciaja Harbison | kye-zhuh |
| Demi Washington | dem-ee |
| Marnelle Garraud | marr-nell juh-rod |
| Bella LaChance | luh-chance |
| Iyana Moore | eye-on-uh |
| Ryanne Allen | ryan |
| Sacha Washington | sah-shuh |

Quick Facts

| | |
|---|--|
| Name | Vanderbilt University |
| Location | Nashville, Tenn. |
| Founded | 1873 |
| Enrollment | 7,057 (undergraduate) • 12,309 (total) |
| Nickname | Commodores |
| Colors | Black and Gold |
| Facility | Memorial Gymnasium (14,316) |
| Conference | Southeastern |
| Affiliation | NCAA Division I |
| Chancellor | Daniel Diermeier |
| Vice Chancellor • Athletics Director | Candice Lee |
| Faculty Athletics Representative | Tracey George |
| Website | VUCommodores.com |

About the Commodores

| | |
|--|-------|
| 2021-22 Overall Record | 16-19 |
| 2021-22 SEC Record | 4-12 |
| Starters Returning • Lost | 4 • 1 |
| Letter Winners Returning • Lost | 7 • 3 |

Program History

| | |
|------------------------------------|-------------------|
| Seasons | 46th (2022-23) |
| First Season | 1977-78 |
| All-Time Record | 873-515 (.629) |
| SEC Tournament Record | 49-36 (.576) |
| NCAA Tournament Appearances | 27 (last in 2014) |
| NCAA Tournament Record | 39-27 (.591) |

Communications

| | |
|--------------------------------------|--|
| Primary Contact • Credentials | Brian Fremund • brian.fremund@vanderbilt.edu |
|--------------------------------------|--|



VANDERBILT WOMEN'S BASKETBALL

2



Jada Brown
jay-duh
Guard • Freshman • 5-8

Bentonville, Ark. • Bentonville
• 2020 6A state champion • Two-time all-state
• 1,043 career points at Bentonville (Ark.)
• 4.1 GPA as a prep

| SEASON | TEAM | GP-GS | MIN/AVG | FG-FGA | FG% | 3FG-3FGA | 3FG% | FT-FTA | FT% | OFF DEF | TOT | AVG | PF-FO | A | TO | BLK | STL | PTS | AVG | |
|--------------|-------|--------------|-----------------|---------------|-------------|--------------|-------------|-------------|-------------|-----------|-----------|-----------|------------|-------------|-----------|-----------|----------|-----------|------------|------------|
| 2022-23 | Vandy | 27-22 | 605/22.4 | 39-138 | .283 | 28-95 | .295 | 8-10 | .800 | 12 | 19 | 31 | 1.1 | 34-0 | 22 | 40 | 1 | 13 | 114 | 4.2 |
| TOTAL | | 27-22 | 605/22.4 | 39-138 | .283 | 28-95 | .295 | 8-10 | .800 | 12 | 19 | 31 | 1.1 | 34-0 | 22 | 40 | 1 | 13 | 114 | 4.2 |

3



Jordyn Cambridge
Guard • Graduate • 5-9

Nashville, Tenn. • Ensworth
• Out for season (Achilles)
• NCAA leader in steals (129) in 2021-22
• Two-time All-SEC Defensive Team

| SEASON | TEAM | GP-GS | MIN/AVG | FG-FGA | FG% | 3FG-3FGA | 3FG% | FT-FTA | FT% | OFF DEF | TOT | AVG | PF-FO | A | TO | BLK | STL | PTS | AVG | |
|--------------|-------|--------------|------------------|----------------|-------------|---------------|-------------|----------------|-------------|------------|------------|------------|------------|--------------|------------|------------|-----------|------------|------------|------------|
| 2018-19 | Vandy | 24-0 | 369/15.4 | 28-83 | .337 | 4-19 | .211 | 18-31 | .581 | 13 | 29 | 42 | 1.8 | 43-1 | 40 | 40 | 2 | 20 | 78 | 3.3 |
| 2019-20 | Vandy | 30-30 | 876/29.2 | 78-225 | .347 | 14-58 | .241 | 40-60 | .667 | 35 | 122 | 157 | 5.2 | 82-4 | 105 | 99 | 14 | 85 | 210 | 7.0 |
| 2021-22 | Vandy | 33-33 | 1120/34.0 | 128-315 | .406 | 12-70 | .171 | 86-140 | .614 | 61 | 124 | 185 | 5.6 | 82-0 | 146 | 110 | 6 | 129 | 354 | 10.7 |
| TOTAL | | 87-63 | 2365/27.2 | 234-623 | .376 | 30-147 | .204 | 144-231 | .623 | 109 | 275 | 384 | 4.4 | 207-5 | 291 | 249 | 22 | 234 | 642 | 7.4 |

5



Yaubryon Chambers
yah-bree-on
Forward • Senior • 6-1

Murfreesboro, Tenn. • Providence Christian
• Team-best 46.7 FG pct. in 2021-22
• Talented singer, pianist and drummer
• Released multiple singles on Spotify

| SEASON | TEAM | GP-GS | MIN/AVG | FG-FGA | FG% | 3FG-3FGA | 3FG% | FT-FTA | FT% | OFF DEF | TOT | AVG | PF-FO | A | TO | BLK | STL | PTS | AVG | |
|--------------|-------|--------------|------------------|----------------|-------------|------------|-------------|--------------|-------------|------------|------------|------------|------------|--------------|-----------|-----------|-----------|-----------|------------|------------|
| 2019-20 | Vandy | 13-0 | 86/6.8 | 12-27 | .444 | 0-0 | .000 | 3-5 | .600 | 5 | 15 | 20 | 1.5 | 21-0 | 2 | 5 | 1 | 4 | 27 | 2.1 |
| 2020-21 | Vandy | 8-8 | 205/25.7 | 22-44 | .500 | 0-1 | .000 | 3-8 | .375 | 24 | 22 | 46 | 5.8 | 26-0 | 3 | 11 | 8 | 9 | 47 | 5.9 |
| 2021-22 | Vandy | 34-0 | 336/9.9 | 21-45 | .467 | 0-0 | .000 | 23-32 | .719 | 28 | 57 | 85 | 2.5 | 36-1 | 13 | 26 | 8 | 17 | 65 | 1.9 |
| 2022-23 | Vandy | 28-24 | 578/20.7 | 56-94 | .596 | 0-0 | .000 | 17-28 | .607 | 51 | 82 | 133 | 4.8 | 82-4 | 28 | 48 | 12 | 43 | 129 | 4.6 |
| TOTAL | | 83-32 | 1208/14.6 | 111-210 | .529 | 0-1 | .000 | 46-73 | .630 | 108 | 176 | 284 | 3.4 | 165-5 | 46 | 90 | 29 | 73 | 268 | 3.2 |

11



Ciaja Harbison
kya-juh
Guard • Graduate • 5-6

Louisville, Ky. • Male
• Graduate transfer from St. Louis
• St. Louis' second all-time leading scorer (1,688 pts)
• 15.9 points/game as a senior
• All-Atlantic 10 selection

| SEASON | TEAM | GP-GS | MIN/AVG | FG-FGA | FG% | 3FG-3FGA | 3FG% | FT-FTA | FT% | OFF DEF | TOT | AVG | PF-FO | A | TO | BLK | STL | PTS | AVG | |
|------------------------|-------|----------------|------------------|-----------------|-------------|----------------|-------------|----------------|-------------|-----------|------------|------------|------------|--------------|------------|------------|-----------|------------|-------------|-------------|
| 2018-19 | SLU | 31-31 | 1129/36.4 | 160-389 | .411 | 16-45 | .356 | 117-139 | .842 | 10 | 108 | 118 | 3.8 | 55-0 | 139 | 125 | 5 | 53 | 453 | 14.6 |
| 2019-20 | SLU | 32-32 | 1154/36.1 | 182-469 | .388 | 35-100 | .350 | 94-122 | .770 | 17 | 57 | 74 | 2.3 | 58-0 | 132 | 104 | 2 | 49 | 493 | 15.4 |
| 2020-21 | SLU | 19-19 | 705/37.1 | 114-306 | .373 | 15-70 | .214 | 78-96 | .813 | 6 | 30 | 36 | 1.9 | 32-0 | 76 | 64 | 7 | 24 | 321 | 16.9 |
| 2021-22 | SLU | 24-24 | 902/37.6 | 160-401 | .399 | 31-101 | .307 | 70-88 | .795 | 15 | 41 | 56 | 2.3 | 53-0 | 56 | 71 | 0 | 30 | 421 | 17.5 |
| 2022-23 | Vandy | 25-25 | 914/36.6 | 162-406 | .399 | 22-82 | .268 | 140-173 | .809 | 14 | 60 | 74 | 3.0 | 39-1 | 111 | 79 | 3 | 62 | 486 | 19.4 |
| TOTAL FOR Vandy | | 25-25 | 914/36.6 | 162-406 | .399 | 22-82 | .268 | 140-173 | .809 | 14 | 60 | 74 | 3.0 | 39-1 | 111 | 79 | 3 | 62 | 486 | 19.4 |
| TOTAL | | 131-131 | 4803/36.7 | 778-1971 | .395 | 119-398 | .299 | 499-618 | .807 | 62 | 296 | 358 | 2.7 | 237-1 | 514 | 443 | 17 | 218 | 2174 | 16.6 |

12



Demi Washington
dem-ee
Guard • Senior • 5-10

Wake Forest, N.C. • New Hope (Md.)
• Started 27 of 35 games in 2021-22
• Top 100 recruit by ESPNHoopGurlz
• 1,000-point scorer as a prep

| SEASON | TEAM | GP-GS | MIN/AVG | FG-FGA | FG% | 3FG-3FGA | 3FG% | FT-FTA | FT% | OFF DEF | TOT | AVG | PF-FO | A | TO | BLK | STL | PTS | AVG | |
|--------------|-------|--------------|------------------|----------------|-------------|-------------|-------------|--------------|-------------|-----------|------------|------------|------------|--------------|-----------|-----------|----------|-----------|------------|------------|
| 2019-20 | Vandy | 29-11 | 451/15.6 | 48-124 | .387 | 0-2 | .000 | 14-18 | .778 | 14 | 26 | 40 | 1.4 | 57-0 | 13 | 31 | 3 | 14 | 110 | 3.8 |
| 2021-22 | Vandy | 35-27 | 717/20.5 | 78-173 | .451 | 0-2 | .000 | 13-28 | .464 | 39 | 92 | 131 | 3.7 | 63-1 | 22 | 44 | 2 | 27 | 169 | 4.8 |
| 2022-23 | Vandy | 28-3 | 466/16.6 | 40-91 | .440 | 5-13 | .385 | 28-39 | .718 | 21 | 54 | 75 | 2.7 | 62-1 | 18 | 21 | 3 | 27 | 113 | 4.0 |
| TOTAL | | 92-41 | 1634/17.8 | 166-388 | .428 | 5-17 | .294 | 55-85 | .647 | 74 | 172 | 246 | 2.7 | 182-2 | 53 | 96 | 8 | 68 | 392 | 4.3 |

14



Marnelle Garraud
marr-nell guh-rod
Guard • Graduate • 5-7

Lynn, Mass. • Nobles & Greenough School
• Grad transfer from Boston College (started 102 of 114 games)
• 1 of 2 players in BC history with 200+ career steals
• 1,000-point scorer as a prep

| SEASON | TEAM | GP-GS | MIN/AVG | FG-FGA | FG% | 3FG-3FGA | 3FG% | FT-FTA | FT% | OFF DEF | TOT | AVG | PF-FO | A | TO | BLK | STL | PTS | AVG | |
|------------------------|-------|----------------|------------------|-----------------|-------------|----------------|-------------|----------------|-------------|------------|------------|------------|------------|--------------|------------|------------|-----------|------------|-------------|-------------|
| 2018-19 | BC | 30-22 | 720/24.0 | 83-230 | .361 | 38-123 | .309 | 39-49 | .796 | 42 | 59 | 101 | 3.4 | 85-0 | 73 | 80 | 2 | 49 | 243 | 8.1 |
| 2019-20 | BC | 32-28 | 985/30.8 | 107-262 | .408 | 56-147 | .381 | 42-56 | .750 | 13 | 82 | 95 | 3.0 | 86-4 | 119 | 93 | 10 | 62 | 312 | 9.8 |
| 2020-21 | BC | 19-19 | 588/31.0 | 47-143 | .329 | 28-92 | .304 | 16-16 | 1.000 | 12 | 35 | 47 | 2.5 | 53-1 | 58 | 56 | 7 | 39 | 138 | 7.3 |
| 2021-22 | BC | 33-33 | 965/29.2 | 83-220 | .377 | 51-149 | .342 | 34-46 | .739 | 12 | 88 | 100 | 3.0 | 77-1 | 123 | 85 | 7 | 52 | 251 | 7.6 |
| 2022-23 | Vandy | 28-28 | 1002/35.8 | 139-352 | .395 | 78-195 | .400 | 41-50 | .820 | 24 | 67 | 91 | 3.3 | 74-0 | 65 | 67 | 11 | 45 | 397 | 14.2 |
| TOTAL FOR Vandy | | 28-28 | 1002/35.8 | 139-352 | .395 | 78-195 | .400 | 41-50 | .820 | 24 | 67 | 91 | 3.3 | 74-0 | 65 | 67 | 11 | 45 | 397 | 14.2 |
| TOTAL | | 142-130 | 4260/30.0 | 459-1207 | .380 | 251-706 | .356 | 172-217 | .793 | 103 | 331 | 434 | 3.1 | 375-6 | 438 | 381 | 37 | 247 | 1341 | 9.4 |

21

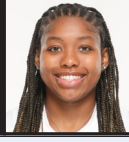


Bella LaChance
luh-chance
Guard • Sophomore • 5-8

Davie, Fla. • St. Thomas Aquinas
• 2021-22 SEC Community Service Team
• 2019 Miami Herald and Sun Sentinel 9A-7A Player of the Year
• Tough, fiesty, energy-giver, vocal

| SEASON | TEAM | GP-GS | MIN/AVG | FG-FGA | FG% | 3FG-3FGA | 3FG% | FT-FTA | FT% | OFF DEF | TOT | AVG | PF-FO | A | TO | BLK | STL | PTS | AVG | |
|--------------|-------|--------------|------------------|---------------|-------------|--------------|-------------|--------------|-------------|----------|-----------|-----------|------------|-------------|-----------|-----------|----------|-----------|------------|------------|
| 2020-21 | Vandy | 8-0 | 93/11.7 | 3-11 | .273 | 0-2 | .000 | 4-6 | .667 | 1 | 6 | 7 | 0.9 | 11-0 | 7 | 4 | 0 | 4 | 10 | 1.3 |
| 2021-22 | Vandy | 26-14 | 289/11.1 | 10-37 | .270 | 5-17 | .294 | 12-16 | .750 | 3 | 17 | 20 | 0.8 | 20-0 | 17 | 6 | 1 | 9 | 37 | 1.4 |
| 2022-23 | Vandy | 28-6 | 673/24.0 | 27-85 | .318 | 9-32 | .281 | 39-46 | .848 | 3 | 51 | 54 | 1.9 | 54-1 | 35 | 31 | 1 | 10 | 102 | 3.6 |
| TOTAL | | 62-20 | 1055/17.0 | 40-133 | .301 | 14-51 | .275 | 55-68 | .809 | 7 | 74 | 81 | 1.3 | 85-1 | 59 | 41 | 2 | 23 | 149 | 2.4 |

23



Ilyana Moore
eye-on-uh
Guard • Sophomore • 5-8

Murfreesboro, Tenn. • Blackman
• Out for season (ACL)
• 2021-22 SEC All-Freshman team
• Program record nine 3-pointers made vs. Alabama State (12.28.21)

| SEASON | TEAM | GP-GS | MIN/AVG | Field Goals | 3-Point | F-Throws | Rebounds | PF-FO | A | TO | BLK | STL | PTS | AVG | | | | | | |
|--------------|-------|--------------|------------------|----------------|-------------|---------------|-------------|--------------|-------------|-----------|-----------|------------|------------|-------------|-----------|-----------|----------|-----------|------------|-------------|
| 2021-22 | Vandy | 35-17 | 1136/32.5 | 148-396 | .374 | 79-207 | .382 | 69-86 | .802 | 32 | 71 | 103 | 2.9 | 67-1 | 89 | 99 | 6 | 55 | 444 | 12.7 |
| TOTAL | | 35-17 | 1136/32.5 | 148-396 | .374 | 79-207 | .382 | 69-86 | .802 | 32 | 71 | 103 | 2.9 | 67-1 | 89 | 99 | 6 | 55 | 444 | 12.7 |

24



Ryenne Allen
Guard • Freshman • 6-1

Warminster, Pa. • Archbishop Wood
• Led Warminster to 2021 state title
• Top 100 recruit by ESPNHoopGurlz
• Prospects Nation 2022 ELITE 100 watch list

| SEASON | TEAM | GP-GS | MIN/AVG | Field Goals | 3-Point | F-Throws | Rebounds | PF-FO | A | TO | BLK | STL | PTS | AVG | | | | | | |
|--------------|-------|-------------|-----------------|---------------|-------------|---------------|-------------|--------------|-------------|----|-----|-----|-----|------|----|----|---|----|-----|-----|
| 2022-23 | Vandy | 27-4 | 574/21.2 | 53-142 | .373 | 36-103 | .350 | 28-37 | .757 | 11 | 53 | 64 | 2.4 | 74-3 | 28 | 32 | 5 | 12 | 170 | 6.3 |
| TOTAL | | 27-4 | 574/21.2 | 53-142 | .373 | 36-103 | .350 | 28-37 | .757 | | | | | | | | | | | |



2022-23 Vanderbilt Women's Basketball Combined Team Statistics All games

Game Records

| Record | Overall | Home | Away | Neutral |
|----------------|---------|------|------|---------|
| ALL GAMES | 12-16 | 9-6 | 3-8 | 0-2 |
| CONFERENCE | 3-11 | 3-4 | 0-7 | 0-0 |
| NON-CONFERENCE | 9-5 | 6-2 | 3-1 | 0-2 |

Score by Periods

| Team | 1st | 2nd | 3rd | 4th | OT | TOT |
|------------|-----|-----|-----|-----|----|------|
| Vanderbilt | 390 | 438 | 520 | 510 | 28 | 1886 |
| Opponents | 464 | 437 | 528 | 515 | 22 | 1966 |

Team Box Score

| No. | Player | | | | Total | | 3-Point | | F-Throw | | Rebounds | | | | | | | | PTS | AVG | | |
|------------------|--------------------|-----------|-------------|------|-----------------|-------------|----------------|-------------|----------------|-------------|------------|------------|-------------|-------------|------------|-----------|------------|------------|------------|------------|-------------|-------------|
| | | GP-GS | MIN | AVG | FG-FGA | FG% | 3FG-3FGA | 3FG% | FT-FTA | FT% | OFF | DEF | TOT | AVG | PF | DQ | A | TO | | | BLK | STL |
| 11 | HARBISON, Ciaja | 25-25 | 913:58 | 36.6 | 162-406 | .399 | 22-82 | .268 | 140-173 | .809 | 14 | 60 | 74 | 3.0 | 39 | 1 | 111 | 79 | 3 | 62 | 486 | 19.4 |
| 14 | GARRAUD, Marnelle | 28-28 | 1001:56 | 35.8 | 139-352 | .395 | 78-195 | .400 | 41-50 | .820 | 24 | 67 | 91 | 3.3 | 74 | 0 | 65 | 67 | 11 | 45 | 397 | 14.2 |
| 35 | WASHINGTON, Sacha | 28-28 | 712:33 | 25.4 | 120-265 | .453 | 0-1 | .000 | 65-104 | .625 | 85 | 122 | 207 | 7.4 | 75 | 3 | 31 | 61 | 41 | 22 | 305 | 10.9 |
| 32 | WILLIAMS, Amauri | 11-0 | 137:02 | 12.5 | 24-49 | .490 | 2-5 | .400 | 20-34 | .588 | 13 | 28 | 41 | 3.7 | 30 | 1 | 1 | 21 | 5 | 3 | 70 | 6.4 |
| 24 | ALLEN, RYANNE | 27-4 | 573:40 | 21.2 | 53-142 | .373 | 36-103 | .350 | 28-37 | .757 | 11 | 53 | 64 | 2.4 | 74 | 3 | 28 | 32 | 5 | 12 | 170 | 6.3 |
| 5 | CHAMBERS, Yaubryon | 28-24 | 578:27 | 20.7 | 56-94 | .596 | 0-0 | .000 | 17-28 | .607 | 51 | 82 | 133 | 4.8 | 82 | 4 | 28 | 48 | 12 | 43 | 129 | 4.6 |
| 2 | BROWN, Jada | 27-22 | 605:19 | 22.4 | 39-138 | .283 | 28-95 | .295 | 8-10 | .800 | 12 | 19 | 31 | 1.1 | 34 | 0 | 22 | 40 | 1 | 13 | 114 | 4.2 |
| 12 | WASHINGTON, Demi | 28-3 | 466:08 | 16.6 | 40-91 | .440 | 5-13 | .385 | 28-39 | .718 | 21 | 54 | 75 | 2.7 | 62 | 1 | 18 | 21 | 3 | 27 | 113 | 4.0 |
| 21 | LACHANCE, Bella | 28-6 | 673:18 | 24.0 | 27-85 | .318 | 9-32 | .281 | 39-46 | .848 | 3 | 51 | 54 | 1.9 | 54 | 1 | 35 | 31 | 1 | 10 | 102 | 3.6 |
| Team | | | | | | | | | | | 68 | 60 | 128 | | | | | 19 | | | | |
| Total | | 28 | 5662 | | 660-1622 | .407 | 180-526 | .342 | 386-521 | .741 | 302 | 596 | 898 | 32.1 | 524 | 14 | 339 | 419 | 82 | 237 | 1886 | 67.4 |
| Opponents | | 28 | 5658 | | 726-1616 | .449 | 167-517 | .323 | 347-513 | .676 | 355 | 707 | 1062 | 37.9 | 541 | 10 | 403 | 486 | 116 | 186 | 1966 | 70.2 |

Team Statistics

| | VANDY | OPP |
|------------------------|-----------------|-----------------|
| Scoring | 1886 | 1966 |
| Points per game | 67.4 | 70.2 |
| Scoring margin | -2.9 | - |
| Field goals-att | 660-1622 | 726-1616 |
| Field goal pct | .407 | .449 |
| 3 point fg-att | 180-526 | 167-517 |
| 3-point FG pct | .342 | .323 |
| 3-pt FG made per game | 6.4 | 6.0 |
| Free throws-att | 386-521 | 347-513 |
| Free throw pct | .741 | .676 |
| F-Throws made per game | 13.8 | 12.4 |
| Rebounds | 898 | 1062 |
| Rebounds per game | 32.1 | 37.9 |
| Rebounding margin | -5.9 | - |
| Assists | 339 | 403 |
| Assists per game | 12.1 | 14.4 |
| Turnovers | 419 | 486 |
| Turnovers per game | 15.0 | 17.4 |
| Turnover margin | +2.4 | - |
| Assist/turnover ratio | 0.8 | 0.8 |
| Steals | 237 | 186 |
| Steals per game | 8.5 | 6.6 |
| Blocks | 82 | 116 |
| Blocks per game | 2.9 | 4.1 |
| Winning streak | 1 | - |
| Home win streak | 2 | - |
| Attendance | 35366 | 32691 |
| Home games-Avg/Game | 15-2358 | 11-2972 |
| Neutral site-Avg/Game | - | 2-143 |

Team Results

| Date | Opponent | | Score | Att. |
|------------|-------------------|-----|-------|------|
| 11/07/2022 | at Western Ky. | W | 82-71 | 1387 |
| 11/10/2022 | Samford | W | 81-51 | 1702 |
| 11/13/2022 | at Columbia | W | 74-63 | 913 |
| 11/15/2022 | Tarleton St. | W | 84-48 | 2663 |
| 11/17/2022 | Austin Peay | W | 70-61 | 1695 |
| 11/20/2022 | Saint Joseph's | L | 59-67 | 1717 |
| 11/24/2022 | vs NC State | L | 73-82 | 161 |
| 11/25/2022 | vs UNI | L | 62-65 | 125 |
| 11/29/2022 | USC Upstate | W | 74-45 | 1762 |
| 12/01/2022 | at ETSU | L | 31-44 | 707 |
| 12/04/2022 | UT Martin | L | 54-66 | 1913 |
| 12/08/2022 | at Louisiana Tech | Wot | 75-70 | 1515 |
| 12/18/2022 | Lipscomb | Wot | 72-71 | 2480 |
| 12/21/2022 | Alabama A&M | W | 76-46 | 1900 |
| 12/29/2022 | Mississippi St. | L | 44-72 | 2456 |
| 01/01/2023 | at LSU | L | 63-88 | 7285 |
| 01/05/2023 | at Ole Miss | L | 53-74 | 2235 |
| 01/08/2023 | Tennessee | L | 71-84 | 4830 |
| 01/16/2023 | at Arkansas | L | 81-84 | 3693 |
| 01/19/2023 | South Carolina | L | 48-96 | 3028 |
| 01/22/2023 | at Florida | L | 55-73 | 1325 |
| 01/29/2023 | Texas A&M | W | 88-79 | 2376 |
| 02/02/2023 | at Missouri | L | 69-86 | 2523 |
| 02/05/2023 | Georgia | L | 61-79 | 2398 |
| 02/09/2023 | Arkansas | W | 78-70 | 1978 |
| 02/12/2023 | at Tennessee | L | 59-86 | 9224 |
| 02/16/2023 | at Alabama | L | 70-88 | 1884 |
| 02/19/2023 | Kentucky | W | 79-57 | 2468 |



**2022-23 Vanderbilt Women's Basketball
Extended Season Box Score
All games**

Game Records

| Record | Overall | Home | Away | Neutral |
|----------------|---------|------|------|---------|
| ALL GAMES | 12-16 | 9-6 | 3-8 | 0-2 |
| CONFERENCE | 3-11 | 3-4 | 0-7 | 0-0 |
| NON-CONFERENCE | 9-5 | 6-2 | 3-1 | 0-2 |

Team Box Score Extended

| No. | Player | | | | Total | | 3-Point | | F-Throw | | Rebounds | | | | | | | | | | | | | | | | |
|------------------|--------------------|-----------|-------------|------|-----------------|-------------|----------------|-------------|----------------|-------------|------------|------------|-------------|-------------|------------|-----------|------------|--------------|------------|--------------|-------------|------------|-------------|------------|-------------|-------------|-------------|
| | | GP-GS | MIN | AVG | FG-FGA | FG% | 3FG-3FGA | 3FG% | FT-FTA | FT% | OFF | DEF | TOT | AVG | PF | DQ | A | A/G | TO | TO/G | A/TO | BLK | BLK/G | STL | STL/G | PTS | AVG |
| 11 | HARBISON, Cijaja | 25-25 | 913:58 | 36.6 | 162-406 | .399 | 22-82 | .268 | 140-173 | .809 | 14 | 60 | 74 | 3.0 | 39 | 1 | 111 | 4.44 | 79 | 3.16 | 1.41 | 3 | 0.12 | 62 | 2.48 | 486 | 19.4 |
| 14 | GARRAUD, Marnelle | 28-28 | 1001:56 | 35.8 | 139-352 | .395 | 78-195 | .400 | 41-50 | .820 | 24 | 67 | 91 | 3.3 | 74 | 0 | 65 | 2.32 | 67 | 2.39 | 0.97 | 11 | 0.39 | 45 | 1.61 | 397 | 14.2 |
| 35 | WASHINGTON, Sacha | 28-28 | 712:33 | 25.4 | 120-265 | .453 | 0-1 | .000 | 65-104 | .625 | 85 | 122 | 207 | 7.4 | 75 | 3 | 31 | 1.11 | 61 | 2.18 | 0.51 | 41 | 1.46 | 22 | 0.79 | 305 | 10.9 |
| 32 | WILLIAMS, Amauri | 11-0 | 137:02 | 12.5 | 24-49 | .490 | 2-5 | .400 | 20-34 | .588 | 13 | 28 | 41 | 3.7 | 30 | 1 | 1 | 0.09 | 21 | 1.91 | 0.05 | 5 | 0.45 | 3 | 0.27 | 70 | 6.4 |
| 24 | ALLEN, Ryanne | 27-4 | 573:40 | 21.2 | 53-142 | .373 | 36-103 | .350 | 28-37 | .757 | 11 | 53 | 64 | 2.4 | 74 | 3 | 28 | 1.04 | 32 | 1.19 | 0.88 | 5 | 0.19 | 12 | 0.44 | 170 | 6.3 |
| 5 | CHAMBERS, Yaubryon | 28-24 | 578:27 | 20.7 | 56-94 | .596 | 0-0 | .000 | 17-28 | .607 | 51 | 82 | 133 | 4.8 | 82 | 4 | 28 | 1.00 | 48 | 1.71 | 0.58 | 12 | 0.43 | 43 | 1.54 | 129 | 4.6 |
| 2 | BROWN, Jada | 27-22 | 605:19 | 22.4 | 39-138 | .283 | 28-95 | .295 | 8-10 | .800 | 12 | 19 | 31 | 1.1 | 34 | 0 | 22 | 0.81 | 40 | 1.48 | 0.55 | 1 | 0.04 | 13 | 0.48 | 114 | 4.2 |
| 12 | WASHINGTON, Demi | 28-3 | 466:08 | 16.6 | 40-91 | .440 | 5-13 | .385 | 28-39 | .718 | 21 | 54 | 75 | 2.7 | 62 | 1 | 18 | 0.64 | 21 | 0.75 | 0.86 | 3 | 0.11 | 27 | 0.96 | 113 | 4.0 |
| 21 | LACHANCE, Bella | 28-6 | 673:18 | 24.0 | 27-85 | .318 | 9-32 | .281 | 39-46 | .848 | 3 | 51 | 54 | 1.9 | 54 | 1 | 35 | 1.25 | 31 | 1.11 | 1.13 | 1 | 0.04 | 10 | 0.36 | 102 | 3.6 |
| Total | | 28 | 5662 | | 660-1622 | .407 | 180-526 | .342 | 386-521 | .741 | 302 | 596 | 898 | 32.1 | 524 | 14 | 339 | 12.11 | 419 | 14.96 | 0.81 | 82 | 2.93 | 237 | 8.46 | 1886 | 67.4 |
| Opponents | | 28 | 5658 | | 726-1616 | .449 | 167-517 | .323 | 347-513 | .676 | 355 | 707 | 1062 | 37.9 | 541 | 10 | 403 | 14.39 | 486 | 17.36 | 0.83 | 116 | 4.14 | 186 | 6.64 | 1966 | 70.2 |

Score by Periods

| Team | 1st | 2nd | 3rd | 4th | OT | TOT |
|------------|-----|-----|-----|-----|----|------|
| Vanderbilt | 390 | 438 | 520 | 510 | 28 | 1886 |
| Opponents | 464 | 437 | 528 | 515 | 22 | 1966 |



2022-23 Vanderbilt Women's Basketball
Season Box - Average per 40 Minutes
All games

| ## | Player | min | fgm | fga | pct | 3fgm | 3fga | pct | ftm | fta | pct | oreb | dreb | treb | pf | a | to | blk | stl | pts |
|----|--------------------|-----|-----|------|------|------|------|------|-----|-----|------|------|------|------|-----|-----|-----|-----|-----|------|
| 24 | ALLEN, Ryanne | 40 | 3.7 | 9.9 | .373 | 2.5 | 7.2 | .350 | 2.0 | 2.6 | .757 | 0.8 | 3.7 | 4.5 | 5.2 | 2.0 | 2.2 | 0.3 | 0.8 | 11.9 |
| 2 | BROWN, Jada | 40 | 2.6 | 9.1 | .283 | 1.9 | 6.3 | .295 | 0.5 | 0.7 | .800 | 0.8 | 1.3 | 2.0 | 2.2 | 1.5 | 2.6 | 0.1 | 0.9 | 7.5 |
| 5 | CHAMBERS, Yaubryon | 40 | 3.9 | 6.5 | .596 | 0.0 | 0.0 | .000 | 1.2 | 1.9 | .607 | 3.5 | 5.7 | 9.2 | 5.7 | 1.9 | 3.3 | 0.8 | 3.0 | 8.9 |
| 14 | GARRAUD, Marnelle | 40 | 5.5 | 14.1 | .395 | 3.1 | 7.8 | .400 | 1.6 | 2.0 | .820 | 1.0 | 2.7 | 3.6 | 3.0 | 2.6 | 2.7 | 0.4 | 1.8 | 15.8 |
| 11 | HARBISON, Cijaja | 40 | 7.1 | 17.8 | .399 | 1.0 | 3.6 | .268 | 6.1 | 7.6 | .809 | 0.6 | 2.6 | 3.2 | 1.7 | 4.9 | 3.5 | 0.1 | 2.7 | 21.3 |
| 21 | LACHANCE, Bella | 40 | 1.6 | 5.0 | .318 | 0.5 | 1.9 | .281 | 2.3 | 2.7 | .848 | 0.2 | 3.0 | 3.2 | 3.2 | 2.1 | 1.8 | 0.1 | 0.6 | 6.1 |
| 12 | WASHINGTON, Demi | 40 | 3.4 | 7.8 | .440 | 0.4 | 1.1 | .385 | 2.4 | 3.3 | .718 | 1.8 | 4.6 | 6.4 | 5.3 | 1.5 | 1.8 | 0.3 | 2.3 | 9.7 |
| 35 | WASHINGTON, Sacha | 40 | 6.7 | 14.9 | .453 | 0.0 | 0.1 | .000 | 3.6 | 5.8 | .625 | 4.8 | 6.8 | 11.6 | 4.2 | 1.7 | 3.4 | 2.3 | 1.2 | 17.1 |
| 32 | WILLIAMS, Amauri | 40 | 7.0 | 14.3 | .490 | 0.6 | 1.5 | .400 | 5.8 | 9.9 | .588 | 3.8 | 8.2 | 12.0 | 8.8 | 0.3 | 6.1 | 1.5 | 0.9 | 20.4 |

Note: All statistics are pro-rated based on an average per 40-minute game.



**2022-23 Vanderbilt Women's Basketball
Team Overall Conference
All games**

Summary

| Player | Overall Statistics | | | | | | | | | | Conference Statistics | | | | | | | | | |
|--------------------|--------------------|-------|-------------|-------------|-------------|-------------|-------------|------------|------------|-------------|-----------------------|-------|-------------|-------------|-------------|-------------|-------------|------------|-----------|-------------|
| | GP-GS | MIN/G | FG% | 3FG% | FT% | R/G | A/G | STL | BLK | PTS/G | GP-GS | MIN/G | FG% | 3FG% | FT% | R/G | A/G | STL | BLK | PTS/G |
| HARBISON, Cija | 25-25 | 36.6 | .399 | .268 | .809 | 3.0 | 4.4 | 62 | 3 | 19.4 | 14-14 | 37.4 | .383 | .294 | .787 | 2.6 | 3.6 | 39 | 0 | 19.9 |
| GARRAUD, Marnelle | 28-28 | 35.8 | .395 | .400 | .820 | 3.3 | 2.3 | 45 | 11 | 14.2 | 14-14 | 37.8 | .384 | .410 | .813 | 3.7 | 2.6 | 20 | 2 | 15.4 |
| WASHINGTON, Sacha | 28-28 | 25.4 | .453 | .000 | .625 | 7.4 | 1.1 | 22 | 41 | 10.9 | 14-14 | 27.4 | .428 | .000 | .632 | 7.5 | 1.2 | 13 | 21 | 11.4 |
| WILLIAMS, Amauri | 11-0 | 12.5 | .490 | .400 | .588 | 3.7 | 0.1 | 3 | 5 | 6.4 | 0-0 | 0.0 | .000 | .000 | .000 | 0.0 | 0.0 | 0 | 0 | 0.0 |
| ALLEN, RYANNE | 27-4 | 21.2 | .373 | .350 | .757 | 2.4 | 1.0 | 12 | 5 | 6.3 | 14-4 | 22.9 | .343 | .347 | .609 | 2.1 | 1.4 | 4 | 3 | 5.5 |
| CHAMBERS, Yaubryon | 28-24 | 20.7 | .596 | .000 | .607 | 4.8 | 1.0 | 43 | 12 | 4.6 | 14-10 | 17.4 | .486 | .000 | .667 | 3.6 | 1.1 | 14 | 4 | 3.1 |
| BROWN, Jada | 27-22 | 22.4 | .283 | .295 | .800 | 1.1 | 0.8 | 13 | 1 | 4.2 | 13-9 | 20.0 | .283 | .302 | .750 | 0.5 | 0.5 | 3 | 1 | 3.5 |
| WASHINGTON, Demi | 28-3 | 16.6 | .440 | .385 | .718 | 2.7 | 0.6 | 27 | 3 | 4.0 | 14-1 | 13.6 | .484 | .714 | .750 | 2.3 | 0.4 | 11 | 2 | 2.9 |
| LACHANCE, Bella | 28-6 | 24.0 | .318 | .281 | .848 | 1.9 | 1.3 | 10 | 1 | 3.6 | 14-4 | 25.1 | .333 | .273 | .864 | 1.7 | 0.7 | 3 | 0 | 4.1 |
| Totals | 28 | | .407 | .342 | .741 | 32.1 | 12.1 | 237 | 82 | 67.4 | 14 | | .387 | .357 | .737 | 29.1 | 11.3 | 107 | 33 | 65.6 |
| Opponent | 28 | | .449 | .323 | .676 | 37.9 | 14.4 | 186 | 116 | 70.2 | 14 | | .505 | .355 | .722 | 39.9 | 16.1 | 99 | 73 | 79.7 |

Scoring

| Player | Overall Statistics | | | | | | | | Conference Statistics | | | | | | | |
|--------------------|--------------------|-------------|----------------|-------------|----------------|-------------|-------------|-------------|-----------------------|-------------|---------------|-------------|----------------|-------------|-------------|-------------|
| | FG-FGA | FG% | 3FG-3FGA | 3FG% | FT-FTA | FT% | PTS | PTS/G | FG-FGA | FG% | 3FG-3FGA | 3FG% | FT-FTA | FT% | PTS | PTS/G |
| HARBISON, Cija | 162-406 | .399 | 22-82 | .268 | 140-173 | .809 | 486 | 19.4 | 95-248 | .383 | 15-51 | .294 | 74-94 | .787 | 279 | 19.9 |
| GARRAUD, Marnelle | 139-352 | .395 | 78-195 | .400 | 41-50 | .820 | 397 | 14.2 | 73-190 | .384 | 43-105 | .410 | 26-32 | .813 | 215 | 15.4 |
| WASHINGTON, Sacha | 120-265 | .453 | 0-1 | .000 | 65-104 | .625 | 305 | 10.9 | 62-145 | .428 | 0-0 | .000 | 36-57 | .632 | 160 | 11.4 |
| WILLIAMS, Amauri | 24-49 | .490 | 2-5 | .400 | 20-34 | .588 | 70 | 6.4 | 0-0 | .000 | 0-0 | .000 | 0-0 | .000 | 0 | 0.0 |
| ALLEN, RYANNE | 53-142 | .373 | 36-103 | .350 | 28-37 | .757 | 170 | 6.3 | 23-67 | .343 | 17-49 | .347 | 14-23 | .609 | 77 | 5.5 |
| CHAMBERS, Yaubryon | 56-94 | .596 | 0-0 | .000 | 17-28 | .607 | 129 | 4.6 | 17-35 | .486 | 0-0 | .000 | 10-15 | .667 | 44 | 3.1 |
| BROWN, Jada | 39-138 | .283 | 28-95 | .295 | 8-10 | .800 | 114 | 4.2 | 15-53 | .283 | 13-43 | .302 | 3-4 | .750 | 46 | 3.5 |
| WASHINGTON, Demi | 40-91 | .440 | 5-13 | .385 | 28-39 | .718 | 113 | 4.0 | 15-31 | .484 | 5-7 | .714 | 6-8 | .750 | 41 | 2.9 |
| LACHANCE, Bella | 27-85 | .318 | 9-32 | .281 | 39-46 | .848 | 102 | 3.6 | 16-48 | .333 | 6-22 | .273 | 19-22 | .864 | 57 | 4.1 |
| Totals | 660-1622 | .407 | 180-526 | .342 | 386-521 | .741 | 1886 | 67.4 | 316-817 | .387 | 99-277 | .357 | 188-255 | .737 | 919 | 65.6 |
| Opponent | 726-1616 | .449 | 167-517 | .323 | 347-513 | .676 | 1966 | 70.2 | 420-832 | .505 | 89-251 | .355 | 187-259 | .722 | 1116 | 79.7 |

Totals

| Player | Overall Statistics | | | | | | | | | | Conference Statistics | | | | | | | | | |
|--------------------|--------------------|------------|-------------|------------|-----------|------------|------------|------------|-----------|-----|-----------------------|------------|------------|------------|----------|------------|------------|------------|-----------|-----|
| | O-REB | D-REB | TOTAL | PF | FO | A | TO | A/TO | HI | PTS | O-REB | D-REB | TOTAL | PF | FO | A | TO | A/TO | HI | PTS |
| HARBISON, Cija | 14 | 60 | 74 | 39 | 1 | 111 | 79 | 1.4 | 41 | | 7 | 29 | 36 | 24 | 1 | 50 | 49 | 1.0 | 41 | |
| GARRAUD, Marnelle | 24 | 67 | 91 | 74 | 0 | 65 | 67 | 1.0 | 31 | | 13 | 39 | 52 | 38 | 0 | 36 | 45 | 0.8 | 31 | |
| WASHINGTON, Sacha | 85 | 122 | 207 | 75 | 3 | 31 | 61 | 0.5 | 26 | | 53 | 52 | 105 | 39 | 1 | 17 | 28 | 0.6 | 26 | |
| WILLIAMS, Amauri | 13 | 28 | 41 | 30 | 1 | 1 | 21 | 0.0 | 13 | | 0 | 0 | 0 | 0 | 0 | 0 | 0 | 0.0 | 0 | |
| ALLEN, RYANNE | 11 | 53 | 64 | 74 | 3 | 28 | 32 | 0.9 | 17 | | 5 | 24 | 29 | 44 | 3 | 19 | 16 | 1.2 | 12 | |
| CHAMBERS, Yaubryon | 51 | 82 | 133 | 82 | 4 | 28 | 48 | 0.6 | 14 | | 21 | 29 | 50 | 44 | 1 | 15 | 21 | 0.7 | 11 | |
| BROWN, Jada | 12 | 19 | 31 | 34 | 0 | 22 | 40 | 0.6 | 12 | | 3 | 4 | 7 | 15 | 0 | 6 | 15 | 0.4 | 9 | |
| WASHINGTON, Demi | 21 | 54 | 75 | 62 | 1 | 18 | 21 | 0.9 | 13 | | 10 | 22 | 32 | 29 | 0 | 5 | 6 | 0.8 | 8 | |
| LACHANCE, Bella | 3 | 51 | 54 | 54 | 1 | 35 | 31 | 1.1 | 7 | | 0 | 24 | 24 | 31 | 1 | 10 | 22 | 0.5 | 7 | |
| Totals | 302 | 596 | 898 | 524 | 14 | 339 | 419 | 0.8 | 88 | | 154 | 254 | 408 | 264 | 7 | 158 | 205 | 0.8 | 88 | |
| Opponent | 355 | 707 | 1062 | 541 | 10 | 403 | 486 | 0.8 | 96 | | 185 | 374 | 559 | 268 | 4 | 226 | 220 | 1.0 | 96 | |



**2022-23 Vanderbilt Women's Basketball
Season/Career Statistics
All games**

Summary

| Player | Season Statistics | | | | | | | | | | Career Statistics | | | | | | | | | |
|--------------------|-------------------|-------|------|------|------|-----|-----|-----|-----|-------|-------------------|-------|------|------|------|-----|-----|-----|-----|-------|
| | GP-GS | MIN/G | FG% | 3FG% | FT% | R/G | A/G | STL | BLK | PTS/G | GP-GS | MIN/G | FG% | 3FG% | FT% | R/G | A/G | STL | BLK | PTS/G |
| ALLEN, Ryanne | 27-4 | 21.2 | .373 | .350 | .757 | 2.4 | 1.0 | 12 | 5 | 6.3 | 27-4 | 21.2 | .373 | .350 | .757 | 2.4 | 1.0 | 12 | 5 | 6.3 |
| BROWN, Jada | 27-22 | 22.4 | .283 | .295 | .800 | 1.1 | 0.8 | 13 | 1 | 4.2 | 27-22 | 22.4 | .283 | .295 | .800 | 1.1 | 0.8 | 13 | 1 | 4.2 |
| CHAMBERS, Yaubryon | 28-24 | 20.7 | .596 | .000 | .607 | 4.8 | 1.0 | 43 | 12 | 4.6 | 83-32 | 14.6 | .529 | .000 | .630 | 3.4 | 0.6 | 73 | 29 | 3.2 |
| GARRAUD, Marnelle | 28-28 | 35.8 | .395 | .400 | .820 | 3.3 | 2.3 | 45 | 11 | 14.2 | 142-130 | 30.0 | .380 | .356 | .793 | 3.1 | 3.1 | 247 | 37 | 9.4 |
| HARBISON, Cijaja | 25-25 | 36.6 | .399 | .268 | .809 | 3.0 | 4.4 | 62 | 3 | 19.4 | 131-131 | 36.7 | .395 | .299 | .807 | 2.7 | 3.9 | 218 | 17 | 16.6 |
| LACHANCE, Bella | 28-6 | 24.0 | .318 | .281 | .848 | 1.9 | 1.3 | 10 | 1 | 3.6 | 62-20 | 17.0 | .301 | .275 | .809 | 1.3 | 1.0 | 23 | 2 | 2.4 |
| WASHINGTON, Demi | 28-3 | 16.6 | .440 | .385 | .718 | 2.7 | 0.6 | 27 | 3 | 4.0 | 92-41 | 17.8 | .428 | .294 | .647 | 2.7 | 0.6 | 68 | 8 | 4.3 |
| WASHINGTON, Sacha | 28-28 | 25.4 | .453 | .000 | .625 | 7.4 | 1.1 | 22 | 41 | 10.9 | 63-36 | 22.6 | .458 | .000 | .651 | 6.9 | 0.9 | 48 | 60 | 9.1 |
| WILLIAMS, Amauri | 11-0 | 12.5 | .490 | .400 | .588 | 3.7 | 0.1 | 3 | 5 | 6.4 | 11-0 | 12.5 | .490 | .400 | .588 | 3.7 | 0.1 | 3 | 5 | 6.4 |

Scoring

| Player | Season Statistics | | | | | | | | Career Statistics | | | | | | | |
|--------------------|-------------------|------|----------|------|---------|------|-----|-------|-------------------|------|----------|------|---------|------|------|-------|
| | FG-FGA | FG% | 3FG-3FGA | 3FG% | FT-FTA | FT% | PTS | PTS/G | FG-FGA | FG% | 3FG-3FGA | 3FG% | FT-FTA | FT% | PTS | PTS/G |
| ALLEN, Ryanne | 53-142 | .373 | 36-103 | .350 | 28-37 | .757 | 170 | 6.3 | 53-142 | .373 | 36-103 | .350 | 28-37 | .757 | 170 | 6.3 |
| BROWN, Jada | 39-138 | .283 | 28-95 | .295 | 8-10 | .800 | 114 | 4.2 | 39-138 | .283 | 28-95 | .295 | 8-10 | .800 | 114 | 4.2 |
| CHAMBERS, Yaubryon | 56-94 | .596 | 0-0 | .000 | 17-28 | .607 | 129 | 4.6 | 111-210 | .529 | 0-1 | .000 | 46-73 | .630 | 268 | 3.2 |
| GARRAUD, Marnelle | 139-352 | .395 | 78-195 | .400 | 41-50 | .820 | 397 | 14.2 | 459-1207 | .380 | 251-706 | .356 | 172-217 | .793 | 1341 | 9.4 |
| HARBISON, Cijaja | 162-406 | .399 | 22-82 | .268 | 140-173 | .809 | 486 | 19.4 | 778-1971 | .395 | 119-398 | .299 | 499-618 | .807 | 2174 | 16.6 |
| LACHANCE, Bella | 27-85 | .318 | 9-32 | .281 | 39-46 | .848 | 102 | 3.6 | 40-133 | .301 | 14-51 | .275 | 55-68 | .809 | 149 | 2.4 |
| WASHINGTON, Demi | 40-91 | .440 | 5-13 | .385 | 28-39 | .718 | 113 | 4.0 | 166-388 | .428 | 5-17 | .294 | 55-85 | .647 | 392 | 4.3 |
| WASHINGTON, Sacha | 120-265 | .453 | 0-1 | .000 | 65-104 | .625 | 305 | 10.9 | 224-489 | .458 | 0-1 | .000 | 123-189 | .651 | 571 | 9.1 |
| WILLIAMS, Amauri | 24-49 | .490 | 2-5 | .400 | 20-34 | .588 | 70 | 6.4 | 24-49 | .490 | 2-5 | .400 | 20-34 | .588 | 70 | 6.4 |

Totals

| Player | Season Statistics | | | | | | | | | Career Statistics | | | | | | |
|--------------------|-------------------|-------|-------|----|----|-----|----|------|-------|-------------------|-------|-----|----|-----|-----|------|
| | O-REB | D-REB | TOTAL | PF | FO | A | TO | A/TO | O-REB | D-REB | TOTAL | PF | FO | A | TO | A/TO |
| ALLEN, Ryanne | 11 | 53 | 64 | 74 | 3 | 28 | 32 | 0.9 | 11 | 53 | 64 | 74 | 3 | 28 | 32 | 0.9 |
| BROWN, Jada | 12 | 19 | 31 | 34 | 0 | 22 | 40 | 0.6 | 12 | 19 | 31 | 34 | 0 | 22 | 40 | 0.6 |
| CHAMBERS, Yaubryon | 51 | 82 | 133 | 82 | 4 | 28 | 48 | 0.6 | 108 | 176 | 284 | 165 | 5 | 46 | 90 | 0.5 |
| GARRAUD, Marnelle | 24 | 67 | 91 | 74 | 0 | 65 | 67 | 1.0 | 103 | 331 | 434 | 375 | 6 | 438 | 381 | 1.1 |
| HARBISON, Cijaja | 14 | 60 | 74 | 39 | 1 | 111 | 79 | 1.4 | 62 | 296 | 358 | 237 | 1 | 514 | 443 | 1.2 |
| LACHANCE, Bella | 3 | 51 | 54 | 54 | 1 | 35 | 31 | 1.1 | 7 | 74 | 81 | 85 | 1 | 59 | 41 | 1.4 |
| WASHINGTON, Demi | 21 | 54 | 75 | 62 | 1 | 18 | 21 | 0.9 | 74 | 172 | 246 | 182 | 2 | 53 | 96 | 0.6 |
| WASHINGTON, Sacha | 85 | 122 | 207 | 75 | 3 | 31 | 61 | 0.5 | 198 | 239 | 437 | 162 | 5 | 57 | 118 | 0.5 |
| WILLIAMS, Amauri | 13 | 28 | 41 | 30 | 1 | 1 | 21 | 0.0 | 13 | 28 | 41 | 30 | 1 | 1 | 21 | 0.0 |



**2022-23 Vanderbilt Women's Basketball
Season Schedule/Results & Leaders
All games**

Game Records

| Record | Overall | Home | Away | Neutral |
|----------------|---------|------|------|---------|
| ALL GAMES | 12-16 | 9-6 | 3-8 | 0-2 |
| CONFERENCE | 3-11 | 3-4 | 0-7 | 0-0 |
| NON-CONFERENCE | 9-5 | 6-2 | 3-1 | 0-2 |

Team Results

| Date | Opponent | | Score | Att. | High Points | High Rebounds |
|------------|-------------------|-----|-------|------|--|---|
| 11/07/2022 | at Western Ky. | W | 82-71 | 1387 | (28) HARBISON, Cijaja | (8) CHAMBERS, Yaubryon (8) WASHINGTON, Sacha |
| 11/10/2022 | Samford | W | 81-51 | 1702 | (17) ALLEN, Ryanne | (10) WASHINGTON, Sacha |
| 11/13/2022 | at Columbia | W | 74-63 | 913 | (27) HARBISON, Cijaja | (6) WASHINGTON, Demi (6) WILLIAMS, Amauri |
| 11/15/2022 | Tarleton St. | W | 84-48 | 2663 | (16) GARRAUD, Marnelle | (6) HARBISON, Cijaja (6) WASHINGTON, Sacha |
| 11/17/2022 | Austin Peay | W | 70-61 | 1695 | (22) HARBISON, Cijaja | (9) WASHINGTON, Sacha |
| 11/20/2022 | Saint Joseph's | L | 59-67 | 1717 | (11) GARRAUD, Marnelle (11) ALLEN, Ryanne | (8) CHAMBERS, Yaubryon |
| 11/24/2022 | vs NC State | L | 73-82 | 161 | (34) HARBISON, Cijaja | (7) WASHINGTON, Sacha |
| 11/25/2022 | vs UNI | L | 62-65 | 125 | (14) HARBISON, Cijaja | (11) CHAMBERS, Yaubryon |
| 11/29/2022 | USC Upstate | W | 74-45 | 1762 | (16) GARRAUD, Marnelle | (6) LACHANCE, Bella |
| 12/01/2022 | at ETSU | L | 31-44 | 707 | (12) GARRAUD, Marnelle | (6) CHAMBERS, Yaubryon (6) WASHINGTON, Demi |
| 12/04/2022 | UT Martin | L | 54-66 | 1913 | (19) GARRAUD, Marnelle | (7) WASHINGTON, Sacha |
| 12/08/2022 | at Louisiana Tech | Wot | 75-70 | 1515 | (31) GARRAUD, Marnelle | (9) WASHINGTON, Sacha |
| 12/18/2022 | Lipscomb | Wot | 72-71 | 2480 | (31) HARBISON, Cijaja | (12) CHAMBERS, Yaubryon (12) WASHINGTON, Sacha |
| 12/21/2022 | Alabama A&M | W | 76-46 | 1900 | (23) WASHINGTON, Sacha | (6) WASHINGTON, Sacha |
| 12/29/2022 | Mississippi St. | L | 44-72 | 2456 | (11) WASHINGTON, Sacha | (9) WASHINGTON, Sacha |
| 01/01/2023 | at LSU | L | 63-88 | 7285 | (27) HARBISON, Cijaja | (7) WASHINGTON, Sacha |
| 01/05/2023 | at Ole Miss | L | 53-74 | 2235 | (21) HARBISON, Cijaja | (7) WASHINGTON, Sacha |
| 01/08/2023 | Tennessee | L | 71-84 | 4830 | (27) HARBISON, Cijaja | (11) WASHINGTON, Sacha |
| 01/16/2023 | at Arkansas | L | 81-84 | 3693 | (31) GARRAUD, Marnelle | (9) WASHINGTON, Sacha |
| 01/19/2023 | South Carolina | L | 48-96 | 3028 | (15) GARRAUD, Marnelle | (6) WASHINGTON, Demi |
| 01/22/2023 | at Florida | L | 55-73 | 1325 | (18) HARBISON, Cijaja | (6) GARRAUD, Marnelle (6) CHAMBERS, Yaubryon |
| 01/29/2023 | Texas A&M | W | 88-79 | 2376 | (41) HARBISON, Cijaja | (5) CHAMBERS, Yaubryon |
| 02/02/2023 | at Missouri | L | 69-86 | 2523 | (26) HARBISON, Cijaja | (10) WASHINGTON, Sacha |
| 02/05/2023 | Georgia | L | 61-79 | 2398 | (19) HARBISON, Cijaja | (8) WASHINGTON, Sacha |
| 02/09/2023 | Arkansas | W | 78-70 | 1978 | (19) GARRAUD, Marnelle | (8) WASHINGTON, Sacha |
| 02/12/2023 | at Tennessee | L | 59-86 | 9224 | (16) GARRAUD, Marnelle | (6) GARRAUD, Marnelle |
| 02/16/2023 | at Alabama | L | 70-88 | 1884 | (26) WASHINGTON, Sacha | (11) WASHINGTON, Sacha |
| 02/19/2023 | Kentucky | W | 79-57 | 2468 | (24) HARBISON, Cijaja | (15) WASHINGTON, Sacha |

Attendance Summary

| | Games | Attend | Avg/Game |
|------|-------|--------|----------|
| Home | 15 | 35366 | 2358 |



**2022-23 Vanderbilt Women's Basketball
Season Schedule/Results & Leaders
All games**

| | Games | Attend | Avg/Game |
|--------------|--------------|---------------|-----------------|
| Away | 11 | 32691 | 2972 |
| Neutral | 2 | 286 | 143 |
| Total | 28 | 68343 | 2441 |



**2022-23 Vanderbilt Women's Basketball
Team Game-by-Game
All games**

| Opponent | Date | Score | W | Total | | 3-Pointers | | Free throws | | Rebounds | | | | PF | A | TO | BLK | STL | PTS | AVG |
|-------------------|------------|-------------|-----|-----------------|-------------|----------------|-------------|----------------|-------------|------------|------------|------------|-------------|------------|------------|------------|-----------|------------|-------------|-------------|
| | | | | FG-FGA | PCT | 3FG-3FGA | PCT | FT-FTA | PCT | OFF | DEF | TOT | AVG | | | | | | | |
| at Western Ky. | 11/07/2022 | 82-71 | W | 28-49 | .571 | 4-15 | .267 | 22-31 | .710 | 8 | 25 | 33 | 33.0 | 32 | 15 | 21 | 6 | 8 | 82 | 82.0 |
| Samford | 11/10/2022 | 81-51 | W | 28-65 | .431 | 12-25 | .480 | 13-22 | .591 | 14 | 29 | 43 | 38.0 | 19 | 18 | 12 | 3 | 8 | 81 | 81.5 |
| at Columbia | 11/13/2022 | 74-63 | W | 24-56 | .429 | 4-10 | .400 | 22-29 | .759 | 11 | 27 | 38 | 38.0 | 21 | 13 | 16 | 8 | 10 | 74 | 79.0 |
| Tarleton St. | 11/15/2022 | 84-48 | W | 32-58 | .552 | 7-19 | .368 | 13-21 | .619 | 10 | 27 | 37 | 37.8 | 14 | 18 | 12 | 0 | 11 | 84 | 80.3 |
| Austin Peay | 11/17/2022 | 70-61 | W | 25-50 | .500 | 5-14 | .357 | 15-22 | .682 | 11 | 24 | 35 | 37.2 | 20 | 12 | 19 | 3 | 14 | 70 | 78.2 |
| Saint Joseph's | 11/20/2022 | 59-67 | L | 24-57 | .421 | 2-13 | .154 | 9-10 | .900 | 6 | 20 | 26 | 35.3 | 17 | 7 | 10 | 4 | 6 | 59 | 75.0 |
| vs NC State | 11/24/2022 | 73-82 | L | 23-65 | .354 | 10-25 | .400 | 17-19 | .895 | 11 | 16 | 27 | 34.1 | 16 | 9 | 10 | 1 | 7 | 73 | 74.7 |
| vs UNI | 11/25/2022 | 62-65 | L | 26-66 | .394 | 4-20 | .200 | 6-10 | .600 | 9 | 33 | 42 | 35.1 | 24 | 15 | 14 | 5 | 6 | 62 | 73.1 |
| USC Upstate | 11/29/2022 | 74-45 | W | 25-56 | .446 | 8-19 | .421 | 16-20 | .800 | 10 | 24 | 34 | 35.0 | 12 | 17 | 18 | 5 | 14 | 74 | 73.2 |
| at ETSU | 12/01/2022 | 31-44 | L | 11-48 | .229 | 2-13 | .154 | 7-10 | .700 | 12 | 26 | 38 | 35.3 | 16 | 4 | 17 | 1 | 7 | 31 | 69.0 |
| UT Martin | 12/04/2022 | 54-66 | L | 18-42 | .429 | 7-12 | .583 | 11-18 | .611 | 12 | 20 | 32 | 35.0 | 13 | 12 | 24 | 3 | 7 | 54 | 67.6 |
| at Louisiana Tech | 12/08/2022 | 75-70 | Wot | 27-63 | .429 | 12-28 | .429 | 9-11 | .818 | 11 | 25 | 36 | 35.1 | 23 | 15 | 17 | 4 | 8 | 75 | 68.3 |
| Lipscomb | 12/18/2022 | 72-71 | Wot | 28-70 | .400 | 1-17 | .059 | 15-18 | .833 | 9 | 25 | 34 | 35.0 | 21 | 10 | 14 | 3 | 8 | 72 | 68.5 |
| Alabama A&M | 12/21/2022 | 76-46 | W | 25-60 | .417 | 3-19 | .158 | 23-25 | .920 | 14 | 21 | 35 | 35.0 | 12 | 16 | 10 | 3 | 16 | 76 | 69.1 |
| Mississippi St. | 12/29/2022 | 44-72 | L | 14-57 | .246 | 6-25 | .240 | 10-16 | .625 | 14 | 13 | 27 | 34.5 | 15 | 7 | 14 | 2 | 6 | 44 | 67.4 |
| at LSU | 01/01/2023 | 63-88 | L | 22-62 | .355 | 9-21 | .429 | 10-14 | .714 | 8 | 14 | 22 | 33.7 | 22 | 12 | 14 | 4 | 9 | 63 | 67.1 |
| at Ole Miss | 01/05/2023 | 53-74 | L | 17-49 | .347 | 4-14 | .286 | 15-21 | .714 | 6 | 20 | 26 | 33.2 | 13 | 9 | 14 | 1 | 6 | 53 | 66.3 |
| Tennessee | 01/08/2023 | 71-84 | L | 27-57 | .474 | 9-20 | .450 | 8-11 | .727 | 9 | 19 | 28 | 32.9 | 17 | 11 | 18 | 3 | 6 | 71 | 66.6 |
| at Arkansas | 01/16/2023 | 81-84 | L | 28-65 | .431 | 13-24 | .542 | 12-18 | .667 | 15 | 22 | 37 | 33.2 | 27 | 15 | 13 | 2 | 6 | 81 | 67.3 |
| South Carolina | 01/19/2023 | 48-96 | L | 18-60 | .300 | 2-13 | .154 | 10-15 | .667 | 13 | 10 | 23 | 32.7 | 19 | 7 | 13 | 3 | 5 | 48 | 66.4 |
| at Florida | 01/22/2023 | 55-73 | L | 19-68 | .279 | 6-19 | .316 | 11-14 | .786 | 17 | 21 | 38 | 32.9 | 16 | 7 | 14 | 3 | 8 | 55 | 65.8 |
| Texas A&M | 01/29/2023 | 88-79 | W | 29-54 | .537 | 9-20 | .450 | 21-27 | .778 | 3 | 21 | 24 | 32.5 | 24 | 14 | 9 | 0 | 9 | 88 | 66.8 |
| at Missouri | 02/02/2023 | 69-86 | L | 24-61 | .393 | 9-25 | .360 | 12-21 | .571 | 14 | 19 | 33 | 32.5 | 16 | 13 | 11 | 4 | 10 | 69 | 66.9 |
| Georgia | 02/05/2023 | 61-79 | L | 18-52 | .346 | 6-27 | .222 | 19-22 | .864 | 12 | 8 | 20 | 32.0 | 20 | 11 | 21 | 2 | 13 | 61 | 66.7 |
| Arkansas | 02/09/2023 | 78-70 | W | 27-56 | .482 | 7-18 | .389 | 17-22 | .773 | 13 | 24 | 37 | 32.2 | 17 | 12 | 16 | 4 | 7 | 78 | 67.1 |
| at Tennessee | 02/12/2023 | 59-86 | L | 19-59 | .322 | 7-19 | .368 | 14-19 | .737 | 4 | 21 | 25 | 31.9 | 23 | 13 | 11 | 0 | 6 | 59 | 66.8 |
| at Alabama | 02/16/2023 | 70-88 | L | 25-54 | .463 | 6-15 | .400 | 14-18 | .778 | 13 | 19 | 32 | 31.9 | 17 | 11 | 23 | 1 | 6 | 70 | 66.9 |
| Kentucky | 02/19/2023 | 79-57 | W | 29-63 | .460 | 6-17 | .353 | 15-17 | .882 | 13 | 23 | 36 | 32.1 | 18 | 16 | 14 | 4 | 10 | 79 | 67.4 |
| Total | | 1886 | | 660-1622 | .407 | 180-526 | .342 | 386-521 | .741 | 302 | 596 | 898 | 32.1 | 524 | 339 | 419 | 82 | 237 | 1886 | 67.4 |
| Opponents | | 1966 | | 726-1616 | .449 | 167-517 | .323 | 347-513 | .676 | 355 | 707 | 1062 | 37.9 | 541 | 403 | 486 | 116 | 186 | 1966 | 70.2 |

Vanderbilt Averages

| Games Played | Points/game | FG Pct | 3FG Pct | FT Pct | Rebounds/game | Assists/game | Turnovers/game | Assist/Turnover ratio | Steals/game | Blocks/game |
|--------------|-------------|--------|---------|--------|---------------|--------------|----------------|-----------------------|-------------|-------------|
| 28 | 67.4 | 40.7 | 34.2 | 74.1 | 32.1 | 12.1 | 15.0 | 0.8 | 8.5 | 2.9 |



**2022-23 Vanderbilt Women's Basketball
Opponents Game-by-Game
All games**

| Opponent | Date | Score | | Total | | 3-Pointers | | Free throws | | Rebounds | | | | | | | | | | |
|-------------------|------------|-------------|-----|-----------------|-------------|----------------|-------------|----------------|-------------|------------|------------|-------------|-------------|------------|------------|------------|------------|------------|-------------|-------------|
| | | | | FG-FGA | PCT | 3FG-3FGA | PCT | FT-FTA | PCT | OFF | DEF | TOT | AVG | PF | A | TO | BLK | STL | PTS | AVG |
| at Western Ky. | 11/07/2022 | 82-71 | W | 24-63 | .381 | 5-22 | .227 | 18-30 | .600 | 18 | 16 | 34 | 34.0 | 26 | 16 | 21 | 1 | 10 | 71 | 71.0 |
| Samford | 11/10/2022 | 81-51 | W | 18-51 | .353 | 3-16 | .188 | 12-20 | .600 | 10 | 25 | 35 | 34.5 | 24 | 9 | 21 | 5 | 4 | 51 | 61.0 |
| at Columbia | 11/13/2022 | 74-63 | W | 23-67 | .343 | 6-21 | .286 | 11-25 | .440 | 24 | 22 | 46 | 38.3 | 25 | 15 | 17 | 4 | 6 | 63 | 61.7 |
| Tarleton St. | 11/15/2022 | 84-48 | W | 16-48 | .333 | 6-22 | .273 | 10-14 | .714 | 7 | 21 | 28 | 35.8 | 18 | 6 | 22 | 2 | 4 | 48 | 58.3 |
| Austin Peay | 11/17/2022 | 70-61 | W | 21-51 | .412 | 2-10 | .200 | 17-23 | .739 | 10 | 17 | 27 | 34.0 | 22 | 9 | 18 | 4 | 7 | 61 | 58.8 |
| Saint Joseph's | 11/20/2022 | 59-67 | L | 23-58 | .397 | 7-23 | .304 | 14-16 | .875 | 15 | 28 | 43 | 35.5 | 18 | 16 | 15 | 2 | 4 | 67 | 60.2 |
| vs NC State | 11/24/2022 | 73-82 | L | 31-59 | .525 | 9-20 | .450 | 11-16 | .688 | 13 | 30 | 43 | 36.6 | 20 | 22 | 17 | 8 | 4 | 82 | 63.3 |
| vs UNI | 11/25/2022 | 62-65 | L | 24-62 | .387 | 7-24 | .292 | 10-20 | .500 | 10 | 32 | 42 | 37.3 | 13 | 12 | 12 | 2 | 6 | 65 | 63.5 |
| USC Upstate | 11/29/2022 | 74-45 | W | 18-45 | .400 | 5-16 | .313 | 4-10 | .400 | 6 | 22 | 28 | 36.2 | 17 | 9 | 26 | 1 | 6 | 45 | 61.4 |
| at ETSU | 12/01/2022 | 31-44 | L | 17-62 | .274 | 2-20 | .100 | 8-16 | .500 | 22 | 25 | 47 | 37.3 | 10 | 6 | 12 | 4 | 4 | 44 | 59.7 |
| UT Martin | 12/04/2022 | 54-66 | L | 26-58 | .448 | 10-26 | .385 | 4-4 | 1.000 | 11 | 16 | 27 | 36.4 | 23 | 16 | 16 | 1 | 9 | 66 | 60.3 |
| at Louisiana Tech | 12/08/2022 | 75-70 | Wot | 24-56 | .429 | 5-13 | .385 | 17-23 | .739 | 10 | 25 | 35 | 36.3 | 16 | 16 | 18 | 4 | 8 | 70 | 61.1 |
| Lipscomb | 12/18/2022 | 72-71 | Wot | 26-64 | .406 | 6-18 | .333 | 13-20 | .650 | 8 | 31 | 39 | 36.5 | 20 | 16 | 24 | 3 | 10 | 71 | 61.8 |
| Alabama A&M | 12/21/2022 | 76-46 | W | 15-40 | .375 | 5-15 | .333 | 11-17 | .647 | 6 | 23 | 29 | 35.9 | 21 | 9 | 27 | 2 | 5 | 46 | 60.7 |
| Mississippi St. | 12/29/2022 | 44-72 | L | 29-56 | .518 | 9-20 | .450 | 5-7 | .714 | 15 | 32 | 47 | 36.7 | 17 | 20 | 20 | 5 | 10 | 72 | 61.5 |
| at LSU | 01/01/2023 | 63-88 | L | 34-64 | .531 | 7-17 | .412 | 13-21 | .619 | 18 | 35 | 53 | 37.7 | 15 | 20 | 17 | 8 | 6 | 88 | 63.1 |
| at Ole Miss | 01/05/2023 | 53-74 | L | 27-57 | .474 | 8-16 | .500 | 12-18 | .667 | 14 | 27 | 41 | 37.9 | 21 | 14 | 15 | 4 | 9 | 74 | 63.8 |
| Tennessee | 01/08/2023 | 71-84 | L | 32-68 | .471 | 6-15 | .400 | 14-22 | .636 | 20 | 22 | 42 | 38.1 | 15 | 14 | 13 | 3 | 8 | 84 | 64.9 |
| at Arkansas | 01/16/2023 | 81-84 | L | 26-56 | .464 | 7-23 | .304 | 25-35 | .714 | 11 | 24 | 35 | 37.9 | 15 | 14 | 10 | 7 | 7 | 84 | 65.9 |
| South Carolina | 01/19/2023 | 48-96 | L | 39-63 | .619 | 2-8 | .250 | 16-22 | .727 | 17 | 32 | 49 | 38.5 | 16 | 17 | 9 | 14 | 6 | 96 | 67.4 |
| at Florida | 01/22/2023 | 55-73 | L | 30-65 | .462 | 2-19 | .105 | 11-13 | .846 | 14 | 32 | 46 | 38.9 | 20 | 16 | 16 | 9 | 4 | 73 | 67.7 |
| Texas A&M | 01/29/2023 | 88-79 | W | 29-56 | .518 | 6-19 | .316 | 15-17 | .882 | 7 | 25 | 32 | 38.5 | 27 | 18 | 17 | 5 | 4 | 79 | 68.2 |
| at Missouri | 02/02/2023 | 69-86 | L | 33-58 | .569 | 11-22 | .500 | 9-11 | .818 | 8 | 27 | 35 | 38.4 | 18 | 21 | 15 | 2 | 4 | 86 | 69.0 |
| Georgia | 02/05/2023 | 61-79 | L | 28-42 | .667 | 2-5 | .400 | 21-24 | .875 | 8 | 24 | 32 | 38.1 | 21 | 18 | 24 | 1 | 13 | 79 | 69.4 |
| Arkansas | 02/09/2023 | 78-70 | W | 26-62 | .419 | 7-26 | .269 | 11-16 | .688 | 12 | 19 | 31 | 37.8 | 22 | 8 | 15 | 3 | 6 | 70 | 69.4 |
| at Tennessee | 02/12/2023 | 59-86 | L | 33-67 | .493 | 5-19 | .263 | 15-23 | .652 | 15 | 36 | 51 | 38.3 | 22 | 19 | 13 | 5 | 2 | 86 | 70.0 |
| at Alabama | 02/16/2023 | 70-88 | L | 32-62 | .516 | 16-36 | .444 | 8-12 | .667 | 12 | 17 | 29 | 38.0 | 21 | 21 | 14 | 4 | 16 | 88 | 70.7 |
| Kentucky | 02/19/2023 | 79-57 | W | 22-56 | .393 | 1-6 | .167 | 12-18 | .667 | 14 | 22 | 36 | 37.9 | 18 | 6 | 22 | 3 | 4 | 57 | 70.2 |
| Total | | 1966 | | 726-1616 | .449 | 167-517 | .323 | 347-513 | .676 | 355 | 707 | 1062 | 37.9 | 541 | 403 | 486 | 116 | 186 | 1966 | 70.2 |
| Vanderbilt | | 1886 | | 660-1622 | .407 | 180-526 | .342 | 386-521 | .741 | 302 | 596 | 898 | 32.1 | 524 | 339 | 419 | 82 | 237 | 1886 | 67.4 |

Opponents Averages

| Games Played | Points/game | FG Pct | 3FG Pct | FT Pct | Rebounds/game | Assists/game | Turnovers/game | Assist/Turnover ratio | Steals/game | Blocks/game |
|--------------|-------------|--------|---------|--------|---------------|--------------|----------------|-----------------------|-------------|-------------|
| 28 | 70.2 | 44.9 | 32.3 | 67.6 | 37.9 | 14.4 | 17.4 | 0.8 | 6.6 | 4.1 |



**2022-23 Vanderbilt Women's Basketball
Individual Game-by-Game
All games**

#2 BROWN, Jada

| Opponent | Date | GS | MIN | Total | | 3-Pointers | | Free throws | | Rebounds | | | | PF | A | TO | BLK | STL | PTS | AVG | |
|-------------------|------------|----|-----------|---------------|---------------|-------------|--------------|-------------|-------------|-------------|-----------|-----------|-----------|------------|-----------|-----------|-----------|----------|-----------|------------|------------|
| | | | | FG-FGA | PCT | 3FG-3FGA | PCT | FT-FTA | PCT | OFF | DEF | TOT | AVG | | | | | | | | |
| at Western Ky. | 11/07/2022 | * | 09:14 | 0-5 | .000 | 0-3 | .000 | 0-0 | .000 | 0 | 0 | 0 | 0.0 | 3 | 0 | 1 | 0 | 0 | 0 | 0.0 | |
| Samford | 11/10/2022 | * | 30:33 | 3-12 | .250 | 2-6 | .333 | 0-0 | .000 | 2 | 1 | 3 | 1.5 | 1 | 2 | 1 | 0 | 0 | 8 | 4.0 | |
| at Columbia | 11/13/2022 | * | 14:38 | 0-2 | .000 | 0-1 | .000 | 2-2 | 1.000 | 0 | 0 | 0 | 1.0 | 0 | 2 | 0 | 0 | 0 | 2 | 3.3 | |
| Tarleton St. | 11/15/2022 | * | 31:33 | 4-7 | .571 | 0-3 | .000 | 1-2 | .500 | 0 | 2 | 2 | 1.3 | 0 | 5 | 0 | 0 | 1 | 9 | 4.8 | |
| Austin Peay | 11/17/2022 | * | 20:09 | 3-6 | .500 | 1-2 | .500 | 0-0 | .000 | 3 | 0 | 3 | 1.6 | 0 | 0 | 3 | 0 | 2 | 7 | 5.2 | |
| Saint Joseph's | 11/20/2022 | * | 06:06 | 0-1 | .000 | 0-1 | .000 | 0-0 | .000 | 0 | 0 | 0 | 1.3 | 1 | 0 | 1 | 0 | 1 | 0 | 4.3 | |
| vs NC State | 11/24/2022 | * | 30:33 | 4-6 | .667 | 4-4 | 1.000 | 0-0 | .000 | 1 | 0 | 1 | 1.3 | 0 | 1 | 0 | 0 | 0 | 12 | 5.4 | |
| vs UNI | 11/25/2022 | * | 25:12 | 1-7 | .143 | 1-6 | .167 | 0-0 | .000 | 0 | 1 | 1 | 1.3 | 2 | 1 | 0 | 0 | 2 | 3 | 5.1 | |
| USC Upstate | 11/29/2022 | * | 31:23 | 3-10 | .300 | 3-8 | .375 | 0-0 | .000 | 1 | 3 | 4 | 1.6 | 3 | 2 | 4 | 0 | 0 | 9 | 5.6 | |
| at ETSU | 12/01/2022 | * | 36:26 | 1-9 | .111 | 1-5 | .200 | 2-2 | 1.000 | 0 | 4 | 4 | 1.8 | 1 | 0 | 3 | 0 | 1 | 5 | 5.5 | |
| UT Martin | 12/04/2022 | * | 31:30 | 2-3 | .667 | 2-3 | .667 | 0-0 | .000 | 0 | 0 | 0 | 1.6 | 2 | 1 | 4 | 0 | 1 | 6 | 5.5 | |
| at Louisiana Tech | 12/08/2022 | * | 09:47 | 0-0 | .000 | 0-0 | .000 | 0-0 | .000 | 1 | 1 | 2 | 1.7 | 2 | 0 | 3 | 0 | 0 | 0 | 5.1 | |
| Lipscomb | 12/18/2022 | * | 42:01 | 1-9 | .111 | 0-5 | .000 | 0-0 | .000 | 0 | 1 | 1 | 1.6 | 2 | 0 | 3 | 0 | 0 | 2 | 4.8 | |
| Alabama A&M | 12/21/2022 | * | 26:12 | 2-8 | .250 | 1-5 | .200 | 0-0 | .000 | 1 | 2 | 3 | 1.7 | 2 | 2 | 2 | 0 | 2 | 5 | 4.9 | |
| Mississippi St. | 12/29/2022 | * | 23:31 | 0-2 | .000 | 0-2 | .000 | 0-0 | .000 | 1 | 0 | 1 | 1.7 | 0 | 1 | 0 | 0 | 0 | 0 | 4.5 | |
| at LSU | 01/01/2023 | * | 37:16 | 3-8 | .375 | 3-8 | .375 | 0-0 | .000 | 1 | 0 | 1 | 1.6 | 1 | 0 | 2 | 0 | 0 | 9 | 4.8 | |
| at Ole Miss | 01/05/2023 | * | 30:37 | 1-5 | .200 | 0-1 | .000 | 0-0 | .000 | 0 | 1 | 1 | 1.6 | 1 | 1 | 2 | 0 | 1 | 2 | 4.6 | |
| Tennessee | 01/08/2023 | * | 18:49 | 1-4 | .250 | 1-3 | .333 | 0-0 | .000 | 0 | 0 | 0 | 1.5 | 0 | 0 | 4 | 0 | 0 | 3 | 4.6 | |
| at Arkansas | 01/16/2023 | * | 28:15 | 3-7 | .429 | 2-4 | .500 | 1-2 | .500 | 0 | 0 | 0 | 1.4 | 4 | 1 | 2 | 0 | 0 | 9 | 4.8 | |
| South Carolina | 01/19/2023 | * | 26:40 | 1-5 | .200 | 1-3 | .333 | 0-0 | .000 | 0 | 0 | 0 | 1.4 | 0 | 1 | 1 | 0 | 0 | 3 | 4.7 | |
| at Florida | 01/22/2023 | * | 19:27 | 1-6 | .167 | 1-6 | .167 | 0-0 | .000 | 0 | 1 | 1 | 1.3 | 1 | 0 | 0 | 1 | 0 | 3 | 4.6 | |
| Texas A&M | 01/29/2023 | * | 15:05 | 1-3 | .333 | 1-3 | .333 | 0-0 | .000 | 0 | 0 | 0 | 1.3 | 3 | 0 | 0 | 0 | 1 | 3 | 4.5 | |
| at Missouri | 02/02/2023 | * | 16:23 | 2-7 | .286 | 2-7 | .286 | 0-0 | .000 | 1 | 0 | 1 | 1.3 | 0 | 0 | 1 | 0 | 0 | 6 | 4.6 | |
| Georgia | 02/05/2023 | | 02:55 | 0-1 | .000 | 0-1 | .000 | 2-2 | 1.000 | 0 | 0 | 0 | 1.2 | 0 | 0 | 2 | 0 | 0 | 2 | 4.5 | |
| at Tennessee | 02/12/2023 | | 08:02 | 0-1 | .000 | 0-1 | .000 | 0-0 | .000 | 0 | 0 | 0 | 1.2 | 2 | 1 | 1 | 0 | 0 | 0 | 4.3 | |
| at Alabama | 02/16/2023 | | 21:10 | 1-2 | .500 | 1-2 | .500 | 0-0 | .000 | 0 | 1 | 1 | 1.2 | 3 | 0 | 0 | 0 | 0 | 3 | 4.3 | |
| Kentucky | 02/19/2023 | | 11:56 | 1-2 | .500 | 1-2 | .500 | 0-0 | .000 | 0 | 1 | 1 | 1.1 | 0 | 1 | 0 | 0 | 1 | 3 | 4.2 | |
| Totals | | | 22 | 605:19 | 39-138 | .283 | 28-95 | .295 | 8-10 | .800 | 12 | 19 | 31 | 1.1 | 34 | 22 | 40 | 1 | 13 | 114 | 4.2 |

Player Averages

| Games Played | Minutes/game | Points/game | FG Pct | 3FG Pct | FT Pct | Rebounds/game | Assists/game | Turnovers/game | Assist/Turnover ratio | Steals/game | Blocks/game |
|--------------|--------------|-------------|--------|---------|--------|---------------|--------------|----------------|-----------------------|-------------|-------------|
| 27 | 22.4 | 4.2 | 28.3 | 29.5 | 80.0 | 1.1 | 0.8 | 1.5 | 0.6 | 0.5 | 0.0 |



**2022-23 Vanderbilt Women's Basketball
Individual Game-by-Game
All games**

#5 CHAMBERS, Yaubryon

| Opponent | Date | GS | MIN | Total | | 3-Pointers | | Free throws | | Rebounds | | | | PF | A | TO | BLK | STL | PTS | AVG | |
|-------------------|------------|----|-----------|---------------|--------------|-------------|------------|-------------|--------------|-------------|-----------|-----------|------------|------------|-----------|-----------|-----------|-----------|-----------|------------|------------|
| | | | | FG-FGA | PCT | 3FG-3FGA | PCT | FT-FTA | PCT | OFF | DEF | TOT | AVG | | | | | | | | |
| at Western Ky. | 11/07/2022 | * | 28:33 | 5-5 | 1.000 | 0-0 | .000 | 0-1 | .000 | 2 | 6 | 8 | 8.0 | 3 | 5 | 6 | 1 | 3 | 10 | 10.0 | |
| Samford | 11/10/2022 | * | 14:23 | 2-4 | .500 | 0-0 | .000 | 1-2 | .500 | 3 | 4 | 7 | 7.5 | 2 | 0 | 0 | 0 | 1 | 5 | 7.5 | |
| at Columbia | 11/13/2022 | * | 18:23 | 2-3 | .667 | 0-0 | .000 | 2-2 | 1.000 | 2 | 3 | 5 | 6.7 | 5 | 0 | 2 | 2 | 2 | 6 | 7.0 | |
| Tarleton St. | 11/15/2022 | * | 22:38 | 1-1 | 1.000 | 0-0 | .000 | 0-0 | .000 | 1 | 1 | 2 | 5.5 | 3 | 1 | 1 | 0 | 0 | 2 | 5.8 | |
| Austin Peay | 11/17/2022 | * | 27:49 | 4-4 | 1.000 | 0-0 | .000 | 1-4 | .250 | 2 | 4 | 6 | 5.6 | 5 | 2 | 2 | 1 | 2 | 9 | 6.4 | |
| Saint Joseph's | 11/20/2022 | * | 22:40 | 3-4 | .750 | 0-0 | .000 | 0-0 | .000 | 4 | 4 | 8 | 6.0 | 1 | 0 | 1 | 0 | 1 | 6 | 6.3 | |
| vs NC State | 11/24/2022 | * | 27:53 | 1-4 | .250 | 0-0 | .000 | 0-1 | .000 | 3 | 2 | 5 | 5.9 | 1 | 1 | 0 | 0 | 3 | 2 | 5.7 | |
| vs UNI | 11/25/2022 | * | 22:07 | 5-8 | .625 | 0-0 | .000 | 0-0 | .000 | 3 | 8 | 11 | 6.5 | 2 | 1 | 1 | 0 | 1 | 10 | 6.3 | |
| USC Upstate | 11/29/2022 | * | 21:51 | 3-4 | .750 | 0-0 | .000 | 1-1 | 1.000 | 1 | 1 | 2 | 6.0 | 0 | 1 | 4 | 1 | 3 | 7 | 6.3 | |
| at ETSU | 12/01/2022 | * | 31:05 | 1-4 | .250 | 0-0 | .000 | 0-0 | .000 | 2 | 4 | 6 | 6.0 | 3 | 1 | 2 | 0 | 3 | 2 | 5.9 | |
| UT Martin | 12/04/2022 | * | 25:57 | 0-0 | .000 | 0-0 | .000 | 0-0 | .000 | 1 | 3 | 4 | 5.8 | 2 | 0 | 3 | 1 | 1 | 0 | 5.4 | |
| at Louisiana Tech | 12/08/2022 | * | 23:28 | 2-3 | .667 | 0-0 | .000 | 0-0 | .000 | 1 | 2 | 3 | 5.6 | 3 | 0 | 2 | 1 | 3 | 4 | 5.3 | |
| Lipscomb | 12/18/2022 | * | 24:01 | 7-9 | .778 | 0-0 | .000 | 0-0 | .000 | 4 | 8 | 12 | 6.1 | 5 | 0 | 1 | 1 | 2 | 14 | 5.9 | |
| Alabama A&M | 12/21/2022 | * | 24:40 | 3-6 | .500 | 0-0 | .000 | 2-2 | 1.000 | 1 | 3 | 4 | 5.9 | 3 | 1 | 2 | 0 | 4 | 8 | 6.1 | |
| Mississippi St. | 12/29/2022 | * | 15:01 | 2-3 | .667 | 0-0 | .000 | 1-3 | .333 | 2 | 0 | 2 | 5.7 | 4 | 0 | 0 | 0 | 0 | 5 | 6.0 | |
| at LSU | 01/01/2023 | * | 19:34 | 1-2 | .500 | 0-0 | .000 | 0-0 | .000 | 3 | 1 | 4 | 5.6 | 4 | 2 | 3 | 0 | 2 | 2 | 5.8 | |
| at Ole Miss | 01/05/2023 | * | 20:32 | 2-2 | 1.000 | 0-0 | .000 | 1-1 | 1.000 | 1 | 2 | 3 | 5.4 | 4 | 0 | 1 | 0 | 1 | 5 | 5.7 | |
| Tennessee | 01/08/2023 | * | 15:14 | 1-4 | .250 | 0-0 | .000 | 0-0 | .000 | 2 | 2 | 4 | 5.3 | 1 | 1 | 0 | 1 | 0 | 2 | 5.5 | |
| at Arkansas | 01/16/2023 | * | 21:14 | 1-3 | .333 | 0-0 | .000 | 0-0 | .000 | 3 | 4 | 7 | 5.4 | 3 | 3 | 1 | 0 | 4 | 2 | 5.3 | |
| South Carolina | 01/19/2023 | * | 28:53 | 1-2 | .500 | 0-0 | .000 | 0-0 | .000 | 2 | 2 | 4 | 5.4 | 2 | 2 | 3 | 0 | 2 | 2 | 5.2 | |
| at Florida | 01/22/2023 | * | 14:41 | 1-4 | .250 | 0-0 | .000 | 1-2 | .500 | 2 | 4 | 6 | 5.4 | 3 | 1 | 1 | 0 | 1 | 3 | 5.0 | |
| Texas A&M | 01/29/2023 | * | 26:19 | 4-7 | .571 | 0-0 | .000 | 3-3 | 1.000 | 1 | 4 | 5 | 5.4 | 5 | 5 | 1 | 0 | 1 | 11 | 5.3 | |
| at Missouri | 02/02/2023 | * | 21:18 | 0-1 | .000 | 0-0 | .000 | 1-2 | .500 | 1 | 5 | 6 | 5.4 | 2 | 1 | 2 | 2 | 2 | 1 | 5.1 | |
| Georgia | 02/05/2023 | | 13:57 | 0-0 | .000 | 0-0 | .000 | 0-0 | .000 | 1 | 2 | 3 | 5.3 | 3 | 0 | 2 | 1 | 0 | 0 | 4.9 | |
| Arkansas | 02/09/2023 | | 06:53 | 1-2 | .500 | 0-0 | .000 | 0-0 | .000 | 0 | 1 | 1 | 5.1 | 4 | 0 | 2 | 0 | 0 | 2 | 4.8 | |
| at Tennessee | 02/12/2023 | | 17:26 | 1-2 | .500 | 0-0 | .000 | 0-0 | .000 | 0 | 1 | 1 | 5.0 | 4 | 0 | 1 | 0 | 0 | 2 | 4.7 | |
| at Alabama | 02/16/2023 | | 08:40 | 1-1 | 1.000 | 0-0 | .000 | 3-4 | .750 | 1 | 0 | 1 | 4.8 | 1 | 0 | 0 | 0 | 0 | 5 | 4.7 | |
| Kentucky | 02/19/2023 | * | 13:17 | 1-2 | .500 | 0-0 | .000 | 0-0 | .000 | 2 | 1 | 3 | 4.8 | 4 | 0 | 4 | 0 | 1 | 2 | 4.6 | |
| Totals | | | 24 | 578:27 | 56-94 | .596 | 0-0 | .000 | 17-28 | .607 | 51 | 82 | 133 | 4.8 | 82 | 28 | 48 | 12 | 43 | 129 | 4.6 |

Player Averages

| Games Played | Minutes/game | Points/game | FG Pct | 3FG Pct | FT Pct | Rebounds/game | Assists/game | Turnovers/game | Assist/Turnover ratio | Steals/game | Blocks/game |
|--------------|--------------|-------------|--------|---------|--------|---------------|--------------|----------------|-----------------------|-------------|-------------|
| 28 | 20.7 | 4.6 | 59.6 | 0.0 | 60.7 | 4.8 | 1.0 | 1.7 | 0.6 | 1.5 | 0.4 |



**2022-23 Vanderbilt Women's Basketball
Individual Game-by-Game
All games**

#11 HARBISON, Cijaja

| Opponent | Date | GS | MIN | Total | | 3-Pointers | | Free throws | | Rebounds | | | | PF | A | TO | BLK | STL | PTS | AVG | |
|-------------------|------------|----|-----------|---------------|----------------|-------------|--------------|-------------|----------------|-------------|-----------|-----------|-----------|------------|-----------|------------|-----------|----------|-----------|------------|-------------|
| | | | | FG-FGA | PCT | 3FG-3FGA | PCT | FT-FTA | PCT | OFF | DEF | TOT | AVG | | | | | | | | |
| at Western Ky. | 11/07/2022 | * | 37:54 | 7-8 | .875 | 2-2 | 1.000 | 12-14 | .857 | 0 | 4 | 4 | 4.0 | 2 | 5 | 2 | 2 | 1 | 28 | 28.0 | |
| Samford | 11/10/2022 | * | 29:59 | 3-10 | .300 | 1-2 | .500 | 0-0 | .000 | 1 | 3 | 4 | 4.0 | 0 | 7 | 4 | 0 | 4 | 7 | 17.5 | |
| at Columbia | 11/13/2022 | * | 36:12 | 9-13 | .692 | 0-0 | .000 | 9-12 | .750 | 0 | 2 | 2 | 3.3 | 1 | 7 | 4 | 0 | 4 | 27 | 20.7 | |
| Tarleton St. | 11/15/2022 | * | 27:40 | 2-9 | .222 | 0-2 | .000 | 2-4 | .500 | 0 | 6 | 6 | 4.0 | 1 | 7 | 1 | 0 | 1 | 6 | 17.0 | |
| Austin Peay | 11/17/2022 | * | 32:49 | 6-15 | .400 | 0-2 | .000 | 10-12 | .833 | 0 | 3 | 3 | 3.8 | 3 | 5 | 5 | 0 | 3 | 22 | 18.0 | |
| Saint Joseph's | 11/20/2022 | * | 37:40 | 4-14 | .286 | 0-1 | .000 | 2-2 | 1.000 | 0 | 2 | 2 | 3.5 | 3 | 2 | 2 | 0 | 2 | 10 | 16.7 | |
| vs NC State | 11/24/2022 | * | 38:05 | 11-26 | .423 | 2-6 | .333 | 10-10 | 1.000 | 1 | 1 | 2 | 3.3 | 1 | 6 | 1 | 0 | 2 | 34 | 19.1 | |
| vs UNI | 11/25/2022 | * | 38:58 | 5-12 | .417 | 1-2 | .500 | 3-4 | .750 | 1 | 5 | 6 | 3.6 | 1 | 5 | 3 | 0 | 0 | 14 | 18.5 | |
| at Louisiana Tech | 12/08/2022 | * | 41:33 | 3-19 | .158 | 0-6 | .000 | 4-6 | .667 | 1 | 2 | 3 | 3.6 | 1 | 6 | 3 | 1 | 1 | 10 | 17.6 | |
| Lipscomb | 12/18/2022 | * | 42:28 | 11-20 | .550 | 1-5 | .200 | 8-9 | .889 | 2 | 2 | 4 | 3.6 | 1 | 3 | 3 | 0 | 1 | 31 | 18.9 | |
| Alabama A&M | 12/21/2022 | * | 27:26 | 6-12 | .500 | 0-3 | .000 | 6-6 | 1.000 | 1 | 1 | 2 | 3.5 | 1 | 8 | 2 | 0 | 4 | 18 | 18.8 | |
| Mississippi St. | 12/29/2022 | * | 34:13 | 3-17 | .176 | 0-6 | .000 | 1-2 | .500 | 1 | 3 | 4 | 3.5 | 2 | 0 | 3 | 0 | 1 | 7 | 17.8 | |
| at LSU | 01/01/2023 | * | 38:14 | 9-21 | .429 | 2-3 | .667 | 7-9 | .778 | 0 | 1 | 1 | 3.3 | 2 | 7 | 2 | 0 | 4 | 27 | 18.5 | |
| at Ole Miss | 01/05/2023 | * | 37:53 | 6-17 | .353 | 2-6 | .333 | 7-8 | .875 | 2 | 2 | 4 | 3.4 | 1 | 2 | 3 | 0 | 1 | 21 | 18.7 | |
| Tennessee | 01/08/2023 | * | 38:41 | 9-20 | .450 | 2-4 | .500 | 7-7 | 1.000 | 1 | 2 | 3 | 3.3 | 2 | 4 | 6 | 0 | 2 | 27 | 19.3 | |
| at Arkansas | 01/16/2023 | * | 39:50 | 5-17 | .294 | 2-6 | .333 | 3-4 | .750 | 0 | 5 | 5 | 3.4 | 5 | 5 | 4 | 0 | 0 | 15 | 19.0 | |
| South Carolina | 01/19/2023 | * | 36:38 | 3-15 | .200 | 0-1 | .000 | 3-5 | .600 | 0 | 1 | 1 | 3.3 | 0 | 1 | 3 | 0 | 1 | 9 | 18.4 | |
| at Florida | 01/22/2023 | * | 33:25 | 8-19 | .421 | 1-1 | 1.000 | 1-1 | 1.000 | 1 | 3 | 4 | 3.3 | 3 | 2 | 3 | 0 | 5 | 18 | 18.4 | |
| Texas A&M | 01/29/2023 | * | 37:23 | 14-19 | .737 | 2-4 | .500 | 11-13 | .846 | 0 | 3 | 3 | 3.3 | 0 | 1 | 3 | 0 | 5 | 41 | 19.6 | |
| at Missouri | 02/02/2023 | * | 37:50 | 9-17 | .529 | 2-5 | .400 | 6-6 | 1.000 | 0 | 2 | 2 | 3.3 | 2 | 4 | 3 | 0 | 5 | 26 | 19.9 | |
| Georgia | 02/05/2023 | * | 40:00 | 6-16 | .375 | 0-3 | .000 | 7-8 | .875 | 0 | 0 | 0 | 3.1 | 4 | 2 | 2 | 0 | 4 | 19 | 19.9 | |
| Arkansas | 02/09/2023 | * | 40:00 | 5-15 | .333 | 0-3 | .000 | 6-11 | .545 | 1 | 2 | 3 | 3.1 | 2 | 8 | 7 | 0 | 4 | 16 | 19.7 | |
| at Tennessee | 02/12/2023 | * | 33:50 | 3-18 | .167 | 0-3 | .000 | 5-8 | .625 | 1 | 1 | 2 | 3.0 | 0 | 5 | 3 | 0 | 2 | 11 | 19.3 | |
| at Alabama | 02/16/2023 | * | 36:05 | 7-20 | .350 | 1-3 | .333 | 3-4 | .750 | 0 | 2 | 2 | 3.0 | 1 | 4 | 5 | 0 | 1 | 18 | 19.3 | |
| Kentucky | 02/19/2023 | * | 39:11 | 8-17 | .471 | 1-3 | .333 | 7-8 | .875 | 0 | 2 | 2 | 3.0 | 0 | 5 | 2 | 0 | 4 | 24 | 19.4 | |
| Totals | | | 25 | 913:58 | 162-406 | .399 | 22-82 | .268 | 140-173 | .809 | 14 | 60 | 74 | 3.0 | 39 | 111 | 79 | 3 | 62 | 486 | 19.4 |

Player Averages

| Games Played | Minutes/game | Points/game | FG Pct | 3FG Pct | FT Pct | Rebounds/game | Assists/game | Turnovers/game | Assist/Turnover ratio | Steals/game | Blocks/game |
|--------------|--------------|-------------|--------|---------|--------|---------------|--------------|----------------|-----------------------|-------------|-------------|
| 25 | 36.6 | 19.4 | 39.9 | 26.8 | 80.9 | 3.0 | 4.4 | 3.2 | 1.4 | 2.5 | 0.1 |



**2022-23 Vanderbilt Women's Basketball
Individual Game-by-Game
All games**

#12 WASHINGTON, Demi

| Opponent | Date | GS | MIN | Total | | 3-Pointers | | Free throws | | Rebounds | | | | PF | A | TO | BLK | STL | PTS | AVG |
|-------------------|------------|----------|---------------|--------------|-------------|-------------|-------------|--------------|-------------|-----------|-----------|-----------|------------|-----------|-----------|-----------|----------|-----------|------------|------------|
| | | | | FG-FGA | PCT | 3FG-3FGA | PCT | FT-FTA | PCT | OFF | DEF | TOT | AVG | | | | | | | |
| at Western Ky. | 11/07/2022 | | 22:36 | 4-6 | .667 | 0-0 | .000 | 0-2 | .000 | 2 | 1 | 3 | 3.0 | 5 | 0 | 3 | 0 | 2 | 8 | 8.0 |
| Samford | 11/10/2022 | | 15:31 | 2-3 | .667 | 0-0 | .000 | 4-7 | .571 | 2 | 0 | 2 | 2.5 | 4 | 2 | 0 | 0 | 1 | 8 | 8.0 |
| at Columbia | 11/13/2022 | | 31:11 | 2-9 | .222 | 0-2 | .000 | 2-4 | .500 | 1 | 5 | 6 | 3.7 | 2 | 1 | 1 | 0 | 3 | 6 | 7.3 |
| Tarleton St. | 11/15/2022 | | 20:50 | 3-4 | .750 | 0-0 | .000 | 2-2 | 1.000 | 0 | 2 | 2 | 3.3 | 2 | 0 | 1 | 0 | 2 | 8 | 7.5 |
| Austin Peay | 11/17/2022 | | 19:38 | 0-4 | .000 | 0-0 | .000 | 0-0 | .000 | 1 | 2 | 3 | 3.2 | 1 | 2 | 0 | 0 | 1 | 0 | 6.0 |
| Saint Joseph's | 11/20/2022 | | 19:12 | 2-3 | .667 | 0-1 | .000 | 0-0 | .000 | 0 | 3 | 3 | 3.2 | 2 | 1 | 0 | 0 | 1 | 4 | 5.7 |
| vs NC State | 11/24/2022 | | 11:29 | 1-2 | .500 | 0-0 | .000 | 0-0 | .000 | 0 | 0 | 0 | 2.7 | 0 | 0 | 0 | 0 | 0 | 2 | 5.1 |
| vs UNI | 11/25/2022 | | 16:30 | 2-3 | .667 | 0-0 | .000 | 0-0 | .000 | 0 | 3 | 3 | 2.8 | 4 | 1 | 3 | 1 | 1 | 4 | 5.0 |
| USC Upstate | 11/29/2022 | * | 30:37 | 2-5 | .400 | 0-1 | .000 | 9-9 | 1.000 | 0 | 4 | 4 | 2.9 | 1 | 6 | 3 | 0 | 4 | 13 | 5.9 |
| at ETSU | 12/01/2022 | * | 22:40 | 2-7 | .286 | 0-1 | .000 | 0-0 | .000 | 2 | 4 | 6 | 3.2 | 3 | 0 | 1 | 0 | 0 | 4 | 5.7 |
| UT Martin | 12/04/2022 | | 18:30 | 2-4 | .500 | 0-0 | .000 | 1-3 | .333 | 0 | 2 | 2 | 3.1 | 0 | 0 | 1 | 0 | 0 | 5 | 5.6 |
| at Louisiana Tech | 12/08/2022 | | 19:01 | 2-2 | 1.000 | 0-0 | .000 | 0-0 | .000 | 1 | 3 | 4 | 3.2 | 4 | 0 | 1 | 0 | 0 | 4 | 5.5 |
| Lipscomb | 12/18/2022 | | 07:38 | 0-2 | .000 | 0-0 | .000 | 0-0 | .000 | 0 | 0 | 0 | 2.9 | 3 | 0 | 1 | 0 | 0 | 0 | 5.1 |
| Alabama A&M | 12/21/2022 | | 20:27 | 1-6 | .167 | 0-1 | .000 | 4-4 | 1.000 | 2 | 3 | 5 | 3.1 | 2 | 0 | 0 | 0 | 1 | 6 | 5.1 |
| Mississippi St. | 12/29/2022 | | 18:30 | 0-0 | .000 | 0-0 | .000 | 0-0 | .000 | 2 | 0 | 2 | 3.0 | 1 | 0 | 0 | 0 | 0 | 0 | 4.8 |
| at LSU | 01/01/2023 | | 11:29 | 2-5 | .400 | 0-0 | .000 | 0-0 | .000 | 0 | 0 | 0 | 2.8 | 0 | 0 | 1 | 1 | 1 | 4 | 4.8 |
| at Ole Miss | 01/05/2023 | | 12:04 | 0-1 | .000 | 0-0 | .000 | 0-0 | .000 | 0 | 2 | 2 | 2.8 | 2 | 0 | 0 | 0 | 1 | 0 | 4.5 |
| Tennessee | 01/08/2023 | | 11:57 | 0-1 | .000 | 0-1 | .000 | 0-0 | .000 | 0 | 1 | 1 | 2.7 | 1 | 1 | 0 | 0 | 0 | 0 | 4.2 |
| at Arkansas | 01/16/2023 | | 07:18 | 0-1 | .000 | 0-0 | .000 | 0-0 | .000 | 0 | 1 | 1 | 2.6 | 2 | 0 | 0 | 0 | 0 | 0 | 4.0 |
| South Carolina | 01/19/2023 | | 18:30 | 3-4 | .750 | 0-0 | .000 | 2-2 | 1.000 | 2 | 4 | 6 | 2.8 | 3 | 0 | 1 | 1 | 2 | 8 | 4.2 |
| at Florida | 01/22/2023 | | 16:26 | 1-4 | .250 | 1-1 | 1.000 | 0-0 | .000 | 3 | 1 | 4 | 2.8 | 3 | 1 | 1 | 0 | 0 | 3 | 4.1 |
| Texas A&M | 01/29/2023 | | 21:45 | 1-3 | .333 | 1-1 | 1.000 | 0-2 | .000 | 0 | 4 | 4 | 2.9 | 4 | 0 | 1 | 0 | 1 | 3 | 4.1 |
| at Missouri | 02/02/2023 | | 02:48 | 0-0 | .000 | 0-0 | .000 | 0-0 | .000 | 0 | 0 | 0 | 2.7 | 1 | 0 | 0 | 0 | 0 | 0 | 3.9 |
| Georgia | 02/05/2023 | | 13:43 | 1-1 | 1.000 | 0-0 | .000 | 0-0 | .000 | 2 | 1 | 3 | 2.8 | 2 | 2 | 0 | 0 | 3 | 2 | 3.8 |
| Arkansas | 02/09/2023 | | 10:38 | 2-3 | .667 | 0-0 | .000 | 2-2 | 1.000 | 0 | 2 | 2 | 2.7 | 1 | 0 | 0 | 0 | 0 | 6 | 3.9 |
| at Tennessee | 02/12/2023 | | 15:49 | 2-3 | .667 | 2-2 | 1.000 | 2-2 | 1.000 | 0 | 1 | 1 | 2.7 | 4 | 0 | 0 | 0 | 1 | 8 | 4.1 |
| at Alabama | 02/16/2023 | | 09:15 | 0-2 | .000 | 0-1 | .000 | 0-0 | .000 | 0 | 0 | 0 | 2.6 | 1 | 0 | 1 | 0 | 1 | 0 | 3.9 |
| Kentucky | 02/19/2023 | * | 20:06 | 3-3 | 1.000 | 1-1 | 1.000 | 0-0 | .000 | 1 | 5 | 6 | 2.7 | 4 | 1 | 1 | 0 | 1 | 7 | 4.0 |
| Totals | | 3 | 466:08 | 40-91 | .440 | 5-13 | .385 | 28-39 | .718 | 21 | 54 | 75 | 2.7 | 62 | 18 | 21 | 3 | 27 | 113 | 4.0 |

Player Averages

| Games Played | Minutes/game | Points/game | FG Pct | 3FG Pct | FT Pct | Rebounds/game | Assists/game | Turnovers/game | Assist/Turnover ratio | Steals/game | Blocks/game |
|--------------|--------------|-------------|--------|---------|--------|---------------|--------------|----------------|-----------------------|-------------|-------------|
| 28 | 16.6 | 4.0 | 44.0 | 38.5 | 71.8 | 2.7 | 0.6 | 0.8 | 0.9 | 1.0 | 0.1 |



**2022-23 Vanderbilt Women's Basketball
Individual Game-by-Game
All games**

#14 GARRAUD, Marnelle

| Opponent | Date | GS | MIN | Total | | 3-Pointers | | Free throws | | Rebounds | | | | PF | A | TO | BLK | STL | PTS | AVG |
|-------------------|------------|-----------|----------------|----------------|-------------|---------------|-------------|--------------|-------------|-----------|-----------|-----------|------------|-----------|-----------|-----------|-----------|-----------|------------|-------------|
| | | | | FG-FGA | PCT | 3FG-3FGA | PCT | FT-FTA | PCT | OFF | DEF | TOT | AVG | | | | | | | |
| at Western Ky. | 11/07/2022 | * | 32:27 | 3-7 | .429 | 1-5 | .200 | 1-1 | 1.000 | 0 | 0 | 0 | 0.0 | 4 | 2 | 3 | 1 | 0 | 8 | 8.0 |
| Samford | 11/10/2022 | * | 28:36 | 6-13 | .462 | 3-6 | .500 | 0-0 | .000 | 0 | 3 | 3 | 1.5 | 3 | 2 | 1 | 0 | 1 | 15 | 11.5 |
| at Columbia | 11/13/2022 | * | 32:08 | 4-9 | .444 | 4-5 | .800 | 0-0 | .000 | 1 | 3 | 4 | 2.3 | 3 | 2 | 1 | 1 | 1 | 12 | 11.7 |
| Tarleton St. | 11/15/2022 | * | 27:36 | 6-12 | .500 | 4-7 | .571 | 0-0 | .000 | 0 | 2 | 2 | 2.3 | 1 | 3 | 1 | 0 | 4 | 16 | 12.8 |
| Austin Peay | 11/17/2022 | * | 33:05 | 4-7 | .571 | 3-6 | .500 | 0-0 | .000 | 1 | 4 | 5 | 2.8 | 3 | 2 | 1 | 0 | 2 | 11 | 12.4 |
| Saint Joseph's | 11/20/2022 | * | 31:32 | 5-13 | .385 | 1-6 | .167 | 0-0 | .000 | 0 | 1 | 1 | 2.5 | 3 | 1 | 2 | 1 | 0 | 11 | 12.2 |
| vs NC State | 11/24/2022 | * | 36:11 | 3-10 | .300 | 2-7 | .286 | 0-0 | .000 | 1 | 1 | 2 | 2.4 | 2 | 0 | 2 | 1 | 2 | 8 | 11.6 |
| vs UNI | 11/25/2022 | * | 38:07 | 2-13 | .154 | 1-8 | .125 | 0-0 | .000 | 0 | 3 | 3 | 2.5 | 3 | 1 | 0 | 3 | 1 | 5 | 10.8 |
| USC Upstate | 11/29/2022 | * | 25:54 | 5-10 | .500 | 4-6 | .667 | 2-2 | 1.000 | 2 | 1 | 3 | 2.6 | 1 | 2 | 0 | 0 | 2 | 16 | 11.3 |
| at ETSU | 12/01/2022 | * | 40:00 | 4-12 | .333 | 1-6 | .167 | 3-4 | .750 | 2 | 2 | 4 | 2.7 | 4 | 1 | 4 | 0 | 3 | 12 | 11.4 |
| UT Martin | 12/04/2022 | * | 39:29 | 7-15 | .467 | 3-6 | .500 | 2-3 | .667 | 0 | 2 | 2 | 2.6 | 2 | 5 | 3 | 0 | 3 | 19 | 12.1 |
| at Louisiana Tech | 12/08/2022 | * | 42:07 | 11-19 | .579 | 7-13 | .538 | 2-2 | 1.000 | 1 | 2 | 3 | 2.7 | 3 | 3 | 2 | 0 | 1 | 31 | 13.7 |
| Lipscomb | 12/18/2022 | * | 39:54 | 4-16 | .250 | 0-5 | .000 | 5-6 | .833 | 2 | 2 | 4 | 2.8 | 4 | 3 | 2 | 1 | 3 | 13 | 13.6 |
| Alabama A&M | 12/21/2022 | * | 25:59 | 2-6 | .333 | 1-4 | .250 | 0-0 | .000 | 1 | 2 | 3 | 2.8 | 0 | 2 | 0 | 1 | 2 | 5 | 13.0 |
| Mississippi St. | 12/29/2022 | * | 35:30 | 3-14 | .214 | 3-9 | .333 | 0-0 | .000 | 0 | 1 | 1 | 2.7 | 2 | 1 | 4 | 0 | 1 | 9 | 12.7 |
| at LSU | 01/01/2023 | * | 35:32 | 3-13 | .231 | 2-6 | .333 | 0-0 | .000 | 0 | 1 | 1 | 2.6 | 2 | 2 | 3 | 0 | 1 | 8 | 12.4 |
| at Ole Miss | 01/05/2023 | * | 36:25 | 6-12 | .500 | 2-5 | .400 | 3-6 | .500 | 0 | 4 | 4 | 2.6 | 3 | 4 | 5 | 0 | 2 | 17 | 12.7 |
| Tennessee | 01/08/2023 | * | 40:00 | 7-14 | .500 | 5-8 | .625 | 0-0 | .000 | 1 | 3 | 4 | 2.7 | 4 | 2 | 3 | 0 | 2 | 19 | 13.1 |
| at Arkansas | 01/16/2023 | * | 37:60 | 10-19 | .526 | 7-10 | .700 | 4-6 | .667 | 5 | 1 | 6 | 2.9 | 4 | 2 | 2 | 1 | 0 | 31 | 14.0 |
| South Carolina | 01/19/2023 | * | 33:53 | 6-21 | .286 | 1-7 | .143 | 2-2 | 1.000 | 0 | 2 | 2 | 2.9 | 3 | 2 | 3 | 0 | 0 | 15 | 14.1 |
| at Florida | 01/22/2023 | * | 36:35 | 2-11 | .182 | 2-6 | .333 | 4-4 | 1.000 | 0 | 6 | 6 | 3.0 | 2 | 1 | 0 | 0 | 1 | 10 | 13.9 |
| Texas A&M | 01/29/2023 | * | 40:00 | 3-7 | .429 | 2-6 | .333 | 2-2 | 1.000 | 0 | 3 | 3 | 3.0 | 3 | 6 | 3 | 0 | 0 | 10 | 13.7 |
| at Missouri | 02/02/2023 | * | 38:14 | 5-11 | .455 | 3-5 | .600 | 0-0 | .000 | 0 | 2 | 2 | 3.0 | 2 | 2 | 3 | 0 | 3 | 13 | 13.7 |
| Georgia | 02/05/2023 | * | 38:24 | 3-13 | .231 | 3-13 | .231 | 2-2 | 1.000 | 2 | 0 | 2 | 2.9 | 4 | 3 | 8 | 0 | 4 | 11 | 13.5 |
| Arkansas | 02/09/2023 | * | 40:00 | 6-12 | .500 | 4-8 | .500 | 3-3 | 1.000 | 2 | 5 | 7 | 3.1 | 3 | 0 | 1 | 0 | 0 | 19 | 13.8 |
| at Tennessee | 02/12/2023 | * | 36:19 | 5-17 | .294 | 3-9 | .333 | 3-4 | .750 | 0 | 6 | 6 | 3.2 | 4 | 3 | 2 | 0 | 1 | 16 | 13.8 |
| at Alabama | 02/16/2023 | * | 40:00 | 5-9 | .556 | 4-6 | .667 | 0-0 | .000 | 2 | 3 | 5 | 3.3 | 1 | 3 | 6 | 0 | 3 | 14 | 13.9 |
| Kentucky | 02/19/2023 | * | 40:00 | 9-17 | .529 | 2-7 | .286 | 3-3 | 1.000 | 1 | 2 | 3 | 3.3 | 1 | 5 | 2 | 1 | 2 | 23 | 14.2 |
| Totals | | 28 | 1001:56 | 139-352 | .395 | 78-195 | .400 | 41-50 | .820 | 24 | 67 | 91 | 3.3 | 74 | 65 | 67 | 11 | 45 | 397 | 14.2 |

Player Averages

| Games Played | Minutes/game | Points/game | FG Pct | 3FG Pct | FT Pct | Rebounds/game | Assists/game | Turnovers/game | Assist/Turnover ratio | Steals/game | Blocks/game |
|--------------|--------------|-------------|--------|---------|--------|---------------|--------------|----------------|-----------------------|-------------|-------------|
| 28 | 35.8 | 14.2 | 39.5 | 40.0 | 82.0 | 3.3 | 2.3 | 2.4 | 1.0 | 1.6 | 0.4 |



**2022-23 Vanderbilt Women's Basketball
Individual Game-by-Game
All games**

#21 LACHANCE, Bella

| Opponent | Date | GS | MIN | Total | | 3-Pointers | | Free throws | | Rebounds | | | | PF | A | TO | BLK | STL | PTS | AVG |
|-------------------|------------|----------|---------------|--------------|-------------|-------------|-------------|--------------|-------------|----------|-----------|-----------|------------|-----------|-----------|-----------|----------|-----------|------------|------------|
| | | | | FG-FGA | PCT | 3FG-3FGA | PCT | FT-FTA | PCT | OFF | DEF | TOT | AVG | | | | | | | |
| at Western Ky. | 11/07/2022 | | 22:56 | 1-3 | .333 | 0-1 | .000 | 4-4 | 1.000 | 0 | 0 | 0 | 0.0 | 3 | 2 | 0 | 0 | 0 | 6 | 6.0 |
| Samford | 11/10/2022 | | 19:58 | 0-2 | .000 | 0-1 | .000 | 2-4 | .500 | 0 | 0 | 0 | 0.0 | 3 | 2 | 0 | 1 | 0 | 2 | 4.0 |
| at Columbia | 11/13/2022 | | 13:21 | 1-3 | .333 | 0-0 | .000 | 2-2 | 1.000 | 0 | 3 | 3 | 1.0 | 1 | 1 | 0 | 0 | 0 | 4 | 4.0 |
| Tarleton St. | 11/15/2022 | | 12:21 | 0-1 | .000 | 0-0 | .000 | 2-2 | 1.000 | 0 | 4 | 4 | 1.8 | 0 | 0 | 2 | 0 | 1 | 2 | 3.5 |
| Austin Peay | 11/17/2022 | | 19:57 | 2-3 | .667 | 1-1 | 1.000 | 1-2 | .500 | 0 | 0 | 0 | 1.4 | 3 | 1 | 1 | 0 | 0 | 6 | 4.0 |
| Saint Joseph's | 11/20/2022 | * | 25:07 | 1-3 | .333 | 0-1 | .000 | 2-2 | 1.000 | 0 | 2 | 2 | 1.5 | 4 | 0 | 0 | 0 | 1 | 4 | 4.0 |
| vs NC State | 11/24/2022 | | 04:27 | 0-0 | .000 | 0-0 | .000 | 0-0 | .000 | 0 | 0 | 0 | 1.3 | 1 | 0 | 0 | 0 | 0 | 0 | 3.4 |
| vs UNI | 11/25/2022 | | 05:51 | 0-0 | .000 | 0-0 | .000 | 0-0 | .000 | 0 | 1 | 1 | 1.3 | 1 | 1 | 1 | 0 | 1 | 0 | 3.0 |
| USC Upstate | 11/29/2022 | | 32:06 | 2-4 | .500 | 0-0 | .000 | 0-0 | .000 | 1 | 5 | 6 | 1.8 | 1 | 4 | 0 | 0 | 1 | 4 | 3.1 |
| at ETSU | 12/01/2022 | | 25:50 | 0-1 | .000 | 0-0 | .000 | 1-2 | .500 | 0 | 4 | 4 | 2.0 | 1 | 1 | 1 | 0 | 0 | 1 | 2.9 |
| UT Martin | 12/04/2022 | * | 30:31 | 1-5 | .200 | 1-1 | 1.000 | 0-0 | .000 | 0 | 1 | 1 | 1.9 | 1 | 2 | 2 | 0 | 0 | 3 | 2.9 |
| at Louisiana Tech | 12/08/2022 | | 40:05 | 2-5 | .400 | 1-3 | .333 | 0-0 | .000 | 0 | 5 | 5 | 2.2 | 1 | 4 | 1 | 0 | 1 | 5 | 3.1 |
| Lipscomb | 12/18/2022 | | 38:55 | 0-3 | .000 | 0-1 | .000 | 2-2 | 1.000 | 0 | 1 | 1 | 2.1 | 2 | 4 | 1 | 0 | 2 | 2 | 3.0 |
| Alabama A&M | 12/21/2022 | | 30:58 | 1-4 | .250 | 0-1 | .000 | 4-4 | 1.000 | 2 | 1 | 3 | 2.1 | 1 | 3 | 0 | 0 | 0 | 6 | 3.2 |
| Mississippi St. | 12/29/2022 | | 18:54 | 2-6 | .333 | 1-3 | .333 | 0-0 | .000 | 0 | 1 | 1 | 2.1 | 0 | 1 | 5 | 0 | 0 | 5 | 3.3 |
| at LSU | 01/01/2023 | | 08:58 | 1-1 | 1.000 | 1-1 | 1.000 | 0-0 | .000 | 0 | 2 | 2 | 2.1 | 5 | 0 | 2 | 0 | 1 | 3 | 3.3 |
| at Ole Miss | 01/05/2023 | | 15:05 | 0-2 | .000 | 0-1 | .000 | 2-2 | 1.000 | 0 | 0 | 0 | 1.9 | 2 | 0 | 1 | 0 | 0 | 2 | 3.2 |
| Tennessee | 01/08/2023 | | 22:30 | 1-2 | .500 | 0-1 | .000 | 0-0 | .000 | 0 | 2 | 2 | 1.9 | 2 | 1 | 2 | 0 | 0 | 2 | 3.2 |
| at Arkansas | 01/16/2023 | | 13:56 | 2-2 | 1.000 | 0-0 | .000 | 3-4 | .750 | 0 | 2 | 2 | 1.9 | 2 | 0 | 0 | 0 | 0 | 7 | 3.4 |
| South Carolina | 01/19/2023 | | 22:49 | 1-2 | .500 | 0-1 | .000 | 2-2 | 1.000 | 0 | 0 | 0 | 1.9 | 4 | 1 | 2 | 0 | 0 | 4 | 3.4 |
| at Florida | 01/22/2023 | | 27:54 | 1-4 | .250 | 0-1 | .000 | 1-2 | .500 | 0 | 0 | 0 | 1.8 | 1 | 1 | 3 | 0 | 0 | 3 | 3.4 |
| Texas A&M | 01/29/2023 | | 27:32 | 1-2 | .500 | 1-2 | .500 | 3-4 | .750 | 0 | 3 | 3 | 1.8 | 1 | 0 | 1 | 0 | 0 | 6 | 3.5 |
| at Missouri | 02/02/2023 | | 27:33 | 1-3 | .333 | 0-1 | .000 | 2-2 | 1.000 | 0 | 3 | 3 | 1.9 | 3 | 1 | 1 | 0 | 0 | 4 | 3.5 |
| Georgia | 02/05/2023 | * | 38:41 | 2-5 | .400 | 2-5 | .400 | 0-0 | .000 | 0 | 1 | 1 | 1.8 | 1 | 1 | 1 | 0 | 0 | 6 | 3.6 |
| Arkansas | 02/09/2023 | * | 40:00 | 3-6 | .500 | 1-2 | .500 | 0-0 | .000 | 0 | 2 | 2 | 1.8 | 2 | 1 | 1 | 0 | 1 | 7 | 3.8 |
| at Tennessee | 02/12/2023 | * | 38:51 | 1-6 | .167 | 0-1 | .000 | 2-2 | 1.000 | 0 | 4 | 4 | 1.9 | 3 | 1 | 0 | 0 | 0 | 4 | 3.8 |
| at Alabama | 02/16/2023 | * | 21:49 | 0-2 | .000 | 0-1 | .000 | 2-2 | 1.000 | 0 | 3 | 3 | 2.0 | 3 | 1 | 2 | 0 | 0 | 2 | 3.7 |
| Kentucky | 02/19/2023 | | 26:23 | 0-5 | .000 | 0-2 | .000 | 2-2 | 1.000 | 0 | 1 | 1 | 1.9 | 2 | 1 | 1 | 0 | 1 | 2 | 3.6 |
| Totals | | 6 | 673:18 | 27-85 | .318 | 9-32 | .281 | 39-46 | .848 | 3 | 51 | 54 | 1.9 | 54 | 35 | 31 | 1 | 10 | 102 | 3.6 |

Player Averages

| Games Played | Minutes/game | Points/game | FG Pct | 3FG Pct | FT Pct | Rebounds/game | Assists/game | Turnovers/game | Assist/Turnover ratio | Steals/game | Blocks/game |
|--------------|--------------|-------------|--------|---------|--------|---------------|--------------|----------------|-----------------------|-------------|-------------|
| 28 | 24.0 | 3.6 | 31.8 | 28.1 | 84.8 | 1.9 | 1.3 | 1.1 | 1.1 | 0.4 | 0.0 |



**2022-23 Vanderbilt Women's Basketball
Individual Game-by-Game
All games**

#24 ALLEN, RYANNE

| Opponent | Date | GS | MIN | Total | | 3-Pointers | | Free throws | | Rebounds | | | | PF | A | TO | BLK | STL | PTS | AVG |
|-------------------|------------|----------|---------------|---------------|-------------|---------------|-------------|--------------|-------------|-----------|-----------|-----------|------------|-----------|-----------|-----------|----------|-----------|------------|------------|
| | | | | FG-FGA | PCT | 3FG-3FGA | PCT | FT-FTA | PCT | OFF | DEF | TOT | AVG | | | | | | | |
| at Western Ky. | 11/07/2022 | | 13:28 | 2-5 | .400 | 1-4 | .250 | 1-1 | 1.000 | 1 | 3 | 4 | 4.0 | 4 | 0 | 0 | 0 | 0 | 6 | 6.0 |
| Samford | 11/10/2022 | | 21:17 | 5-9 | .556 | 4-6 | .667 | 3-3 | 1.000 | 0 | 3 | 3 | 3.5 | 3 | 1 | 1 | 0 | 0 | 17 | 11.5 |
| at Columbia | 11/13/2022 | | 16:12 | 0-2 | .000 | 0-2 | .000 | 0-0 | .000 | 0 | 2 | 2 | 3.0 | 2 | 0 | 1 | 0 | 0 | 0 | 7.7 |
| Tarleton St. | 11/15/2022 | | 23:09 | 5-10 | .500 | 3-7 | .429 | 0-0 | .000 | 2 | 3 | 5 | 3.5 | 1 | 2 | 1 | 0 | 1 | 13 | 9.0 |
| Austin Peay | 11/17/2022 | | 13:11 | 0-3 | .000 | 0-3 | .000 | 2-2 | 1.000 | 0 | 4 | 4 | 3.6 | 1 | 0 | 3 | 0 | 1 | 2 | 7.6 |
| Saint Joseph's | 11/20/2022 | | 20:41 | 5-7 | .714 | 1-3 | .333 | 0-0 | .000 | 1 | 0 | 1 | 3.2 | 2 | 0 | 1 | 1 | 0 | 11 | 8.2 |
| vs NC State | 11/24/2022 | | 20:39 | 2-10 | .200 | 2-8 | .250 | 4-4 | 1.000 | 1 | 0 | 1 | 2.9 | 4 | 0 | 0 | 0 | 0 | 10 | 8.4 |
| vs UNI | 11/25/2022 | | 20:59 | 1-6 | .167 | 1-4 | .250 | 0-0 | .000 | 0 | 2 | 2 | 2.8 | 3 | 3 | 3 | 0 | 0 | 3 | 7.8 |
| USC Upstate | 11/29/2022 | | 15:23 | 2-5 | .400 | 1-3 | .333 | 0-0 | .000 | 0 | 3 | 3 | 2.8 | 3 | 1 | 1 | 0 | 1 | 5 | 7.4 |
| at ETSU | 12/01/2022 | | 14:34 | 0-1 | .000 | 0-1 | .000 | 0-0 | .000 | 0 | 1 | 1 | 2.6 | 0 | 0 | 0 | 0 | 0 | 0 | 6.7 |
| UT Martin | 12/04/2022 | | 21:16 | 2-4 | .500 | 1-2 | .500 | 2-2 | 1.000 | 1 | 2 | 3 | 2.6 | 1 | 1 | 1 | 1 | 1 | 7 | 6.7 |
| at Louisiana Tech | 12/08/2022 | | 22:05 | 4-6 | .667 | 4-6 | .667 | 2-2 | 1.000 | 0 | 2 | 2 | 2.6 | 4 | 1 | 3 | 0 | 2 | 14 | 7.3 |
| Alabama A&M | 12/21/2022 | | 30:16 | 2-7 | .286 | 1-5 | .200 | 0-0 | .000 | 0 | 4 | 4 | 2.7 | 2 | 0 | 1 | 0 | 2 | 5 | 7.2 |
| Mississippi St. | 12/29/2022 | | 25:32 | 2-6 | .333 | 2-5 | .400 | 1-2 | .500 | 1 | 1 | 2 | 2.6 | 2 | 2 | 1 | 0 | 1 | 7 | 7.1 |
| at LSU | 01/01/2023 | | 16:58 | 1-3 | .333 | 1-3 | .333 | 0-0 | .000 | 1 | 2 | 3 | 2.7 | 5 | 0 | 0 | 0 | 0 | 3 | 6.9 |
| at Ole Miss | 01/05/2023 | | 21:24 | 0-2 | .000 | 0-1 | .000 | 1-2 | .500 | 0 | 1 | 1 | 2.6 | 0 | 0 | 1 | 0 | 0 | 1 | 6.5 |
| Tennessee | 01/08/2023 | | 21:24 | 2-4 | .500 | 1-3 | .333 | 0-0 | .000 | 0 | 1 | 1 | 2.5 | 5 | 0 | 2 | 0 | 0 | 5 | 6.4 |
| at Arkansas | 01/16/2023 | | 22:46 | 2-6 | .333 | 2-4 | .500 | 0-0 | .000 | 0 | 3 | 3 | 2.5 | 3 | 3 | 0 | 0 | 0 | 6 | 6.4 |
| South Carolina | 01/19/2023 | | 09:12 | 0-2 | .000 | 0-1 | .000 | 0-0 | .000 | 0 | 0 | 0 | 2.4 | 5 | 0 | 0 | 0 | 0 | 0 | 6.1 |
| at Florida | 01/22/2023 | | 22:20 | 3-9 | .333 | 1-4 | .250 | 0-1 | .000 | 1 | 0 | 1 | 2.3 | 2 | 1 | 3 | 0 | 0 | 7 | 6.1 |
| Texas A&M | 01/29/2023 | | 18:02 | 3-5 | .600 | 2-4 | .500 | 0-1 | .000 | 0 | 1 | 1 | 2.2 | 3 | 1 | 0 | 0 | 0 | 8 | 6.2 |
| at Missouri | 02/02/2023 | | 28:12 | 3-8 | .375 | 2-7 | .286 | 1-5 | .200 | 0 | 4 | 4 | 2.3 | 3 | 3 | 0 | 1 | 0 | 9 | 6.3 |
| Georgia | 02/05/2023 | * | 25:18 | 2-7 | .286 | 1-5 | .200 | 3-4 | .750 | 0 | 0 | 0 | 2.2 | 4 | 2 | 2 | 0 | 1 | 8 | 6.4 |
| Arkansas | 02/09/2023 | * | 33:44 | 2-6 | .333 | 2-5 | .400 | 6-6 | 1.000 | 1 | 5 | 6 | 2.4 | 2 | 2 | 1 | 1 | 0 | 12 | 6.6 |
| at Tennessee | 02/12/2023 | * | 23:58 | 2-3 | .667 | 2-3 | .667 | 0-0 | .000 | 0 | 3 | 3 | 2.4 | 4 | 2 | 3 | 0 | 1 | 6 | 6.6 |
| at Alabama | 02/16/2023 | * | 31:41 | 0-3 | .000 | 0-2 | .000 | 2-2 | 1.000 | 0 | 1 | 1 | 2.3 | 3 | 2 | 1 | 0 | 1 | 2 | 6.4 |
| Kentucky | 02/19/2023 | | 19:59 | 1-3 | .333 | 1-2 | .500 | 0-0 | .000 | 1 | 2 | 3 | 2.4 | 3 | 1 | 2 | 1 | 0 | 3 | 6.3 |
| Totals | | 4 | 573:40 | 53-142 | .373 | 36-103 | .350 | 28-37 | .757 | 11 | 53 | 64 | 2.4 | 74 | 28 | 32 | 5 | 12 | 170 | 6.3 |

Player Averages

| Games Played | Minutes/game | Points/game | FG Pct | 3FG Pct | FT Pct | Rebounds/game | Assists/game | Turnovers/game | Assist/Turnover ratio | Steals/game | Blocks/game |
|--------------|--------------|-------------|--------|---------|--------|---------------|--------------|----------------|-----------------------|-------------|-------------|
| 27 | 21.2 | 6.3 | 37.3 | 35.0 | 75.7 | 2.4 | 1.0 | 1.2 | 0.9 | 0.4 | 0.2 |



**2022-23 Vanderbilt Women's Basketball
Individual Game-by-Game
All games**

#32 WILLIAMS, Amauri

| Opponent | Date | GS | MIN | Total | | 3-Pointers | | Free throws | | Rebounds | | | | PF | A | TO | BLK | STL | PTS | AVG |
|----------------|------------|----------|---------------|--------------|-------------|------------|-------------|--------------|-------------|-----------|-----------|-----------|------------|-----------|----------|-----------|----------|----------|-----------|------------|
| | | | | FG-FGA | PCT | 3FG-3FGA | PCT | FT-FTA | PCT | OFF | DEF | TOT | AVG | | | | | | | |
| at Western Ky. | 11/07/2022 | | 07:11 | 1-2 | .500 | 0-0 | .000 | 1-2 | .500 | 0 | 1 | 1 | 1.0 | 4 | 0 | 3 | 0 | 1 | 3 | 3.0 |
| Samford | 11/10/2022 | | 18:40 | 3-6 | .500 | 2-4 | .500 | 2-4 | .500 | 2 | 7 | 9 | 5.0 | 2 | 0 | 2 | 1 | 0 | 10 | 6.5 |
| at Columbia | 11/13/2022 | | 12:02 | 2-4 | .500 | 0-0 | .000 | 2-3 | .667 | 3 | 3 | 6 | 5.3 | 4 | 0 | 1 | 1 | 0 | 6 | 6.3 |
| Tarleton St. | 11/15/2022 | | 14:28 | 5-6 | .833 | 0-0 | .000 | 3-4 | .750 | 3 | 1 | 4 | 5.0 | 4 | 0 | 1 | 0 | 0 | 13 | 8.0 |
| Austin Peay | 11/17/2022 | | 07:17 | 1-1 | 1.000 | 0-0 | .000 | 0-0 | .000 | 0 | 0 | 0 | 4.0 | 0 | 0 | 0 | 0 | 1 | 2 | 6.8 |
| Saint Joseph's | 11/20/2022 | | 14:13 | 2-6 | .333 | 0-0 | .000 | 1-2 | .500 | 0 | 3 | 3 | 3.8 | 1 | 1 | 0 | 1 | 0 | 5 | 6.5 |
| vs NC State | 11/24/2022 | | 11:25 | 1-4 | .250 | 0-0 | .000 | 0-0 | .000 | 0 | 4 | 4 | 3.9 | 5 | 0 | 4 | 0 | 0 | 2 | 5.9 |
| vs UNI | 11/25/2022 | | 09:49 | 4-6 | .667 | 0-0 | .000 | 3-6 | .500 | 2 | 2 | 4 | 3.9 | 3 | 0 | 1 | 0 | 0 | 11 | 6.5 |
| USC Upstate | 11/29/2022 | | 18:05 | 2-6 | .333 | 0-1 | .000 | 3-4 | .750 | 0 | 3 | 3 | 3.8 | 3 | 0 | 5 | 2 | 1 | 7 | 6.6 |
| at ETSU | 12/01/2022 | | 09:51 | 1-5 | .200 | 0-0 | .000 | 1-2 | .500 | 2 | 2 | 4 | 3.8 | 3 | 0 | 2 | 0 | 0 | 3 | 6.2 |
| UT Martin | 12/04/2022 | | 14:02 | 2-3 | .667 | 0-0 | .000 | 4-7 | .571 | 1 | 2 | 3 | 3.7 | 1 | 0 | 2 | 0 | 0 | 8 | 6.4 |
| Totals | | 0 | 137:02 | 24-49 | .490 | 2-5 | .400 | 20-34 | .588 | 13 | 28 | 41 | 3.7 | 30 | 1 | 21 | 5 | 3 | 70 | 6.4 |

Player Averages

| Games Played | Minutes/ game | Points/ game | FG Pct | 3FG Pct | FT Pct | Rebounds/ game | Assists/ game | Turnovers/ game | Assist/Turnover ratio | Steals/ game | Blocks/ game |
|--------------|---------------|--------------|--------|---------|--------|----------------|---------------|-----------------|-----------------------|--------------|--------------|
| 11 | 12.5 | 6.4 | 49.0 | 40.0 | 58.8 | 3.7 | 0.1 | 1.9 | 0.0 | 0.3 | 0.5 |



**2022-23 Vanderbilt Women's Basketball
Individual Game-by-Game
All games**

#35 WASHINGTON, Sacha

| Opponent | Date | GS | MIN | Total | | 3-Pointers | | Free throws | | Rebounds | | | | PF | A | TO | BLK | STL | PTS | AVG |
|-------------------|------------|----|------------------|----------------|-------------|------------|-------------|---------------|-------------|-----------|------------|------------|------------|-----------|-----------|-----------|-----------|-----------|------------|-------------|
| | | | | FG-FGA | PCT | 3FG-3FGA | PCT | FT-FTA | PCT | OFF | DEF | TOT | AVG | | | | | | | |
| at Western Ky. | 11/07/2022 | * | 25:41 | 5-8 | .625 | 0-0 | .000 | 3-6 | .500 | 2 | 6 | 8 | 8.0 | 4 | 1 | 1 | 2 | 1 | 13 | 13.0 |
| Samford | 11/10/2022 | * | 21:03 | 4-6 | .667 | 0-0 | .000 | 1-2 | .500 | 2 | 8 | 10 | 9.0 | 1 | 2 | 2 | 1 | 1 | 9 | 11.0 |
| at Columbia | 11/13/2022 | * | 25:53 | 4-11 | .364 | 0-0 | .000 | 3-4 | .750 | 1 | 4 | 5 | 7.7 | 3 | 0 | 2 | 4 | 0 | 11 | 11.0 |
| Tarleton St. | 11/15/2022 | * | 19:45 | 6-8 | .750 | 0-0 | .000 | 3-7 | .429 | 2 | 4 | 6 | 7.3 | 2 | 0 | 2 | 0 | 1 | 15 | 12.0 |
| Austin Peay | 11/17/2022 | * | 26:05 | 5-7 | .714 | 0-0 | .000 | 1-2 | .500 | 3 | 6 | 9 | 7.6 | 4 | 0 | 4 | 2 | 2 | 11 | 11.8 |
| Saint Joseph's | 11/20/2022 | * | 22:50 | 2-6 | .333 | 0-0 | .000 | 4-4 | 1.000 | 1 | 5 | 6 | 7.3 | 0 | 2 | 3 | 1 | 0 | 8 | 11.2 |
| vs NC State | 11/24/2022 | * | 19:19 | 0-3 | .000 | 0-0 | .000 | 3-4 | .750 | 2 | 5 | 7 | 7.3 | 2 | 1 | 2 | 0 | 0 | 3 | 10.0 |
| vs UNI | 11/25/2022 | * | 22:28 | 6-11 | .545 | 0-0 | .000 | 0-0 | .000 | 3 | 5 | 8 | 7.4 | 5 | 2 | 1 | 1 | 0 | 12 | 10.3 |
| USC Upstate | 11/29/2022 | * | 24:41 | 6-12 | .500 | 0-0 | .000 | 1-4 | .250 | 1 | 4 | 5 | 7.1 | 0 | 1 | 1 | 2 | 2 | 13 | 10.6 |
| at ETSU | 12/01/2022 | * | 19:34 | 2-9 | .222 | 0-0 | .000 | 0-0 | .000 | 1 | 3 | 4 | 6.8 | 1 | 1 | 3 | 1 | 0 | 4 | 9.9 |
| UT Martin | 12/04/2022 | * | 18:45 | 2-8 | .250 | 0-0 | .000 | 2-3 | .667 | 4 | 3 | 7 | 6.8 | 4 | 3 | 7 | 1 | 1 | 6 | 9.5 |
| at Louisiana Tech | 12/08/2022 | * | 26:54 | 3-9 | .333 | 0-0 | .000 | 1-1 | 1.000 | 5 | 4 | 9 | 7.0 | 5 | 1 | 1 | 2 | 0 | 7 | 9.3 |
| Lipscomb | 12/18/2022 | * | 30:03 | 5-11 | .455 | 0-1 | .000 | 0-1 | .000 | 1 | 11 | 12 | 7.4 | 4 | 0 | 3 | 1 | 0 | 10 | 9.4 |
| Alabama A&M | 12/21/2022 | * | 26:25 | 8-11 | .727 | 0-0 | .000 | 7-9 | .778 | 4 | 2 | 6 | 7.3 | 1 | 0 | 1 | 2 | 1 | 23 | 10.4 |
| Mississippi St. | 12/29/2022 | * | 28:49 | 2-9 | .222 | 0-0 | .000 | 7-9 | .778 | 6 | 3 | 9 | 7.4 | 4 | 2 | 0 | 2 | 3 | 11 | 10.4 |
| at LSU | 01/01/2023 | * | 31:59 | 2-9 | .222 | 0-0 | .000 | 3-5 | .600 | 3 | 4 | 7 | 7.4 | 3 | 1 | 1 | 3 | 0 | 7 | 10.2 |
| at Ole Miss | 01/05/2023 | * | 25:59 | 2-8 | .250 | 0-0 | .000 | 1-2 | .500 | 3 | 4 | 7 | 7.4 | 0 | 2 | 1 | 1 | 0 | 5 | 9.9 |
| Tennessee | 01/08/2023 | * | 31:26 | 6-8 | .750 | 0-0 | .000 | 1-4 | .250 | 3 | 8 | 11 | 7.6 | 2 | 2 | 1 | 2 | 2 | 13 | 10.1 |
| at Arkansas | 01/16/2023 | * | 28:42 | 5-10 | .500 | 0-0 | .000 | 1-2 | .500 | 3 | 6 | 9 | 7.6 | 4 | 1 | 4 | 1 | 2 | 11 | 10.1 |
| South Carolina | 01/19/2023 | * | 23:24 | 3-9 | .333 | 0-0 | .000 | 1-4 | .250 | 3 | 0 | 3 | 7.4 | 2 | 0 | 0 | 2 | 0 | 7 | 10.0 |
| at Florida | 01/22/2023 | * | 29:13 | 2-11 | .182 | 0-0 | .000 | 4-4 | 1.000 | 3 | 1 | 4 | 7.2 | 1 | 0 | 3 | 2 | 1 | 8 | 9.9 |
| Texas A&M | 01/29/2023 | * | 13:54 | 2-8 | .250 | 0-0 | .000 | 2-2 | 1.000 | 2 | 1 | 3 | 7.0 | 5 | 1 | 0 | 0 | 1 | 6 | 9.7 |
| at Missouri | 02/02/2023 | * | 27:42 | 4-14 | .286 | 0-0 | .000 | 2-6 | .333 | 7 | 3 | 10 | 7.2 | 3 | 2 | 1 | 1 | 0 | 10 | 9.7 |
| Georgia | 02/05/2023 | * | 27:02 | 4-9 | .444 | 0-0 | .000 | 5-6 | .833 | 5 | 3 | 8 | 7.2 | 2 | 1 | 3 | 1 | 1 | 13 | 9.8 |
| Arkansas | 02/09/2023 | * | 28:45 | 8-12 | .667 | 0-0 | .000 | 0-0 | .000 | 4 | 4 | 8 | 7.2 | 3 | 1 | 3 | 3 | 2 | 16 | 10.1 |
| at Tennessee | 02/12/2023 | * | 25:45 | 5-9 | .556 | 0-0 | .000 | 2-3 | .667 | 0 | 0 | 0 | 7.0 | 2 | 1 | 1 | 0 | 1 | 12 | 10.2 |
| at Alabama | 02/16/2023 | * | 31:20 | 11-15 | .733 | 0-0 | .000 | 4-6 | .667 | 5 | 6 | 11 | 7.1 | 4 | 1 | 8 | 1 | 0 | 26 | 10.7 |
| Kentucky | 02/19/2023 | * | 29:08 | 6-14 | .429 | 0-0 | .000 | 3-4 | .750 | 6 | 9 | 15 | 7.4 | 4 | 2 | 2 | 2 | 0 | 15 | 10.9 |
| Totals | | | 28 712:33 | 120-265 | .453 | 0-1 | .000 | 65-104 | .625 | 85 | 122 | 207 | 7.4 | 75 | 31 | 61 | 41 | 22 | 305 | 10.9 |

Player Averages

| Games Played | Minutes/game | Points/game | FG Pct | 3FG Pct | FT Pct | Rebounds/game | Assists/game | Turnovers/game | Assist/Turnover ratio | Steals/game | Blocks/game |
|--------------|--------------|-------------|--------|---------|--------|---------------|--------------|----------------|-----------------------|-------------|-------------|
| 28 | 25.4 | 10.9 | 45.3 | 0.0 | 62.5 | 7.4 | 1.1 | 2.2 | 0.5 | 0.8 | 1.5 |



2022-23 Vanderbilt Women's Basketball
Points-rebounds-assists
All games

| Opponent | Date | Score | | 2 | 5 | 11 | 12 | 14 | 21 | 24 | 32 | 35 |
|-------------------|------------|-------|-----|------------|------------|------------|------------|------------|------------|------------|------------|------------|
| | | | | BROWN,JADA | CHAMBERS,Y | HARBISON,C | WASHINGTON | GARRAUD,MA | LACHANCE,B | ALLEN,RYAN | WILLIAMS,A | WASHINGTON |
| at Western Ky. | 11/07/2022 | 82-71 | W | 0-0-0 | 10-8-5 | 28-4-5 | 8-3-0 | 8-0-2 | 6-0-2 | 6-4-0 | 3-1-0 | 13-8-1 |
| Samford | 11/10/2022 | 81-51 | W | 8-3-2 | 5-7-0 | 7-4-7 | 8-2-2 | 15-3-2 | 2-0-2 | 17-3-1 | 10-9-0 | 9-10-2 |
| at Columbia | 11/13/2022 | 74-63 | W | 2-0-2 | 6-5-0 | 27-2-7 | 6-6-1 | 12-4-2 | 4-3-1 | 0-2-0 | 6-6-0 | 11-5-0 |
| Tarleton St. | 11/15/2022 | 84-48 | W | 9-2-5 | 2-2-1 | 6-6-7 | 8-2-0 | 16-2-3 | 2-4-0 | 13-5-2 | 13-4-0 | 15-6-0 |
| Austin Peay | 11/17/2022 | 70-61 | W | 7-3-0 | 9-6-2 | 22-3-5 | 0-3-2 | 11-5-2 | 6-0-1 | 2-4-0 | 2-0-0 | 11-9-0 |
| Saint Joseph's | 11/20/2022 | 59-67 | L | 0-0-0 | 6-8-0 | 10-2-2 | 4-3-1 | 11-1-1 | 4-2-0 | 11-1-0 | 5-3-1 | 8-6-2 |
| vs NC State | 11/24/2022 | 73-82 | L | 12-1-1 | 2-5-1 | 34-2-6 | 2-0-0 | 8-2-0 | 0-0-0 | 10-1-0 | 2-4-0 | 3-7-1 |
| vs UNI | 11/25/2022 | 62-65 | L | 3-1-1 | 10-11-1 | 14-6-5 | 4-3-1 | 5-3-1 | 0-1-1 | 3-2-3 | 11-4-0 | 12-8-2 |
| USC Upstate | 11/29/2022 | 74-45 | W | 9-4-2 | 7-2-1 | DNP | 13-4-6 | 16-3-2 | 4-6-4 | 5-3-1 | 7-3-0 | 13-5-1 |
| at ETSU | 12/01/2022 | 31-44 | L | 5-4-0 | 2-6-1 | DNP | 4-6-0 | 12-4-1 | 1-4-1 | 0-1-0 | 3-4-0 | 4-4-1 |
| UT Martin | 12/04/2022 | 54-66 | L | 6-0-1 | 0-4-0 | DNP | 5-2-0 | 19-2-5 | 3-1-2 | 7-3-1 | 8-3-0 | 6-7-3 |
| at Louisiana Tech | 12/08/2022 | 75-70 | Wot | 0-2-0 | 4-3-0 | 10-3-6 | 4-4-0 | 31-3-3 | 5-5-4 | 14-2-1 | DNP | 7-9-1 |
| Lipscomb | 12/18/2022 | 72-71 | Wot | 2-1-0 | 14-12-0 | 31-4-3 | 0-0-0 | 13-4-3 | 2-1-4 | DNP | DNP | 10-12-0 |
| Alabama A&M | 12/21/2022 | 76-46 | W | 5-3-2 | 8-4-1 | 18-2-8 | 6-5-0 | 5-3-2 | 6-3-3 | 5-4-0 | DNP | 23-6-0 |
| Mississippi St. | 12/29/2022 | 44-72 | L | 0-1-1 | 5-2-0 | 7-4-0 | 0-2-0 | 9-1-1 | 5-1-1 | 7-2-2 | DNP | 11-9-2 |
| at LSU | 01/01/2023 | 63-88 | L | 9-1-0 | 2-4-2 | 27-1-7 | 4-0-0 | 8-1-2 | 3-2-0 | 3-3-0 | DNP | 7-7-1 |
| at Ole Miss | 01/05/2023 | 53-74 | L | 2-1-1 | 5-3-0 | 21-4-2 | 0-2-0 | 17-4-4 | 2-0-0 | 1-1-0 | DNP | 5-7-2 |
| Tennessee | 01/08/2023 | 71-84 | L | 3-0-0 | 2-4-1 | 27-3-4 | 0-1-1 | 19-4-2 | 2-2-1 | 5-1-0 | DNP | 13-11-2 |
| at Arkansas | 01/16/2023 | 81-84 | L | 9-0-1 | 2-7-3 | 15-5-5 | 0-1-0 | 31-6-2 | 7-2-0 | 6-3-3 | DNP | 11-9-1 |
| South Carolina | 01/19/2023 | 48-96 | L | 3-0-1 | 2-4-2 | 9-1-1 | 8-6-0 | 15-2-2 | 4-0-1 | 0-0-0 | DNP | 7-3-0 |
| at Florida | 01/22/2023 | 55-73 | L | 3-1-0 | 3-6-1 | 18-4-2 | 3-4-1 | 10-6-1 | 3-0-1 | 7-1-1 | DNP | 8-4-0 |
| Texas A&M | 01/29/2023 | 88-79 | W | 3-0-0 | 11-5-5 | 41-3-1 | 3-4-0 | 10-3-6 | 6-3-0 | 8-1-1 | DNP | 6-3-1 |
| at Missouri | 02/02/2023 | 69-86 | L | 6-1-0 | 1-6-1 | 26-2-4 | 0-0-0 | 13-2-2 | 4-3-1 | 9-4-3 | DNP | 10-10-2 |
| Georgia | 02/05/2023 | 61-79 | L | 2-0-0 | 0-3-0 | 19-0-2 | 2-3-2 | 11-2-3 | 6-1-1 | 8-0-2 | DNP | 13-8-1 |
| Arkansas | 02/09/2023 | 78-70 | W | DNP | 2-1-0 | 16-3-8 | 6-2-0 | 19-7-0 | 7-2-1 | 12-6-2 | DNP | 16-8-1 |
| at Tennessee | 02/12/2023 | 59-86 | L | 0-0-1 | 2-1-0 | 11-2-5 | 8-1-0 | 16-6-3 | 4-4-1 | 6-3-2 | DNP | 12-0-1 |
| at Alabama | 02/16/2023 | 70-88 | L | 3-1-0 | 5-1-0 | 18-2-4 | 0-0-0 | 14-5-3 | 2-3-1 | 2-1-2 | DNP | 26-11-1 |
| Kentucky | 02/19/2023 | 79-57 | W | 3-1-1 | 2-3-0 | 24-2-5 | 7-6-1 | 23-3-5 | 2-1-1 | 3-3-1 | DNP | 15-15-2 |



**2022-23 Vanderbilt Women's Basketball
Team High/Low Analysis
All games**

Vanderbilt - Game Highs

| | | | |
|------------------------------|------|---------|--------------------------------|
| POINTS | 88 | | Texas A&M (01/29/2023) |
| | 84 | | Tarleton St. (11/15/2022) |
| | 82 | | at Western Ky. (11/07/2022) |
| | 81 | | at Arkansas (01/16/2023) |
| | 81 | | Samford (11/10/2022) |
| FIELD GOALS MADE | 32 | | Tarleton St. (11/15/2022) |
| | 29 | | Kentucky (02/19/2023) |
| | 29 | | Texas A&M (01/29/2023) |
| FIELD GOAL ATTEMPTS | 70 | | Lipscomb (12/18/2022) |
| | 68 | | at Florida (01/22/2023) |
| FIELD GOAL PERCENTAGE | .571 | (28-49) | at Western Ky. (11/07/2022) |
| | .552 | (32-58) | Tarleton St. (11/15/2022) |
| 3 PT FG MADE | 13 | | at Arkansas (01/16/2023) |
| | 12 | | at Louisiana Tech (12/08/2022) |
| | 12 | | Samford (11/10/2022) |
| 3 PT FG ATTEMPTS | 28 | | at Louisiana Tech (12/08/2022) |
| | 27 | | Georgia (02/05/2023) |
| 3 PT FG PERCENTAGE | .583 | (7-12) | UT Martin (12/04/2022) |
| | .542 | (13-24) | at Arkansas (01/16/2023) |
| FREE THROWS MADE | 23 | | Alabama A&M (12/21/2022) |
| | 22 | | at Columbia (11/13/2022) |
| | 22 | | at Western Ky. (11/07/2022) |
| FREE THROW ATTEMPTS | 31 | | at Western Ky. (11/07/2022) |
| | 29 | | at Columbia (11/13/2022) |
| FREE THROW PERCENTAGE | .920 | (23-25) | Alabama A&M (12/21/2022) |
| | .900 | (9-10) | Saint Joseph's (11/20/2022) |
| REBOUNDS | 43 | | Samford (11/10/2022) |
| | 42 | | vs UNI (N) (11/25/2022) |
| ASSISTS | 18 | | Tarleton St. (11/15/2022) |
| | 18 | | Samford (11/10/2022) |
| STEALS | 16 | | Alabama A&M (12/21/2022) |
| | 14 | | USC Upstate (11/29/2022) |
| | 14 | | Austin Peay (11/17/2022) |
| BLOCKED SHOTS | 8 | | at Columbia (11/13/2022) |
| | 6 | | at Western Ky. (11/07/2022) |
| TURNOVERS | 24 | | UT Martin (12/04/2022) |
| | 23 | | at Alabama (02/16/2023) |
| FOULS | 32 | | at Western Ky. (11/07/2022) |
| | 27 | | at Arkansas (01/16/2023) |



**2022-23 Vanderbilt Women's Basketball
Team High/Low Analysis
All games**

Opponent - Game Highs

| | | | |
|------------------------------|-------|---------|------------------------------|
| POINTS | 96 | | South Carolina (01/19/2023) |
| | 88 | | at Alabama (02/16/2023) |
| | 88 | | at LSU (01/01/2023) |
| | 86 | | at Tennessee (02/12/2023) |
| | 86 | | at Missouri (02/02/2023) |
| FIELD GOALS MADE | 39 | | South Carolina (01/19/2023) |
| | 34 | | at LSU (01/01/2023) |
| FIELD GOAL ATTEMPTS | 68 | | Tennessee (01/08/2023) |
| | 67 | | at Tennessee (02/12/2023) |
| | 67 | | at Columbia (11/13/2022) |
| FIELD GOAL PERCENTAGE | .667 | (28-42) | Georgia (02/05/2023) |
| | .619 | (39-63) | South Carolina (01/19/2023) |
| 3 PT FG MADE | 16 | | at Alabama (02/16/2023) |
| | 11 | | at Missouri (02/02/2023) |
| 3 PT FG ATTEMPTS | 36 | | at Alabama (02/16/2023) |
| | 26 | | Arkansas (02/09/2023) |
| | 26 | | UT Martin (12/04/2022) |
| 3 PT FG PERCENTAGE | .500 | (11-22) | at Missouri (02/02/2023) |
| | .500 | (8-16) | at Ole Miss (01/05/2023) |
| FREE THROWS MADE | 25 | | at Arkansas (01/16/2023) |
| | 21 | | Georgia (02/05/2023) |
| FREE THROW ATTEMPTS | 35 | | at Arkansas (01/16/2023) |
| | 30 | | at Western Ky. (11/07/2022) |
| FREE THROW PERCENTAGE | 1.000 | (4-4) | UT Martin (12/04/2022) |
| | .882 | (15-17) | Texas A&M (01/29/2023) |
| REBOUNDS | 53 | | at LSU (01/01/2023) |
| | 51 | | at Tennessee (02/12/2023) |
| ASSISTS | 22 | | vs NC State (N) (11/24/2022) |
| | 21 | | at Alabama (02/16/2023) |
| | 21 | | at Missouri (02/02/2023) |
| STEALS | 16 | | at Alabama (02/16/2023) |
| | 13 | | Georgia (02/05/2023) |
| BLOCKED SHOTS | 14 | | South Carolina (01/19/2023) |
| | 9 | | at Florida (01/22/2023) |
| TURNOVERS | 27 | | Alabama A&M (12/21/2022) |
| | 26 | | USC Upstate (11/29/2022) |
| FOULS | 27 | | Texas A&M (01/29/2023) |
| | 26 | | at Western Ky. (11/07/2022) |



**2022-23 Vanderbilt Women's Basketball
Team High/Low Analysis
All games**

Vanderbilt - Game Lows

| | | | |
|------------------------------|------|---------|------------------------------|
| POINTS | 31 | | at ETSU (12/01/2022) |
| | 44 | | Mississippi St. (12/29/2022) |
| | 48 | | South Carolina (01/19/2023) |
| | 53 | | at Ole Miss (01/05/2023) |
| | 54 | | UT Martin (12/04/2022) |
| FIELD GOALS MADE | 11 | | at ETSU (12/01/2022) |
| | 14 | | Mississippi St. (12/29/2022) |
| FIELD GOAL ATTEMPTS | 42 | | UT Martin (12/04/2022) |
| | 48 | | at ETSU (12/01/2022) |
| FIELD GOAL PERCENTAGE | .229 | (11-48) | at ETSU (12/01/2022) |
| | .246 | (14-57) | Mississippi St. (12/29/2022) |
| 3 PT FG MADE | 1 | | Lipscomb (12/18/2022) |
| | 2 | | South Carolina (01/19/2023) |
| | 2 | | at ETSU (12/01/2022) |
| | 2 | | Saint Joseph's (11/20/2022) |
| 3 PT FG ATTEMPTS | 10 | | at Columbia (11/13/2022) |
| | 12 | | UT Martin (12/04/2022) |
| 3 PT FG PERCENTAGE | .059 | (1-17) | Lipscomb (12/18/2022) |
| | .154 | (2-13) | South Carolina (01/19/2023) |
| | .154 | (2-13) | at ETSU (12/01/2022) |
| | .154 | (2-13) | Saint Joseph's (11/20/2022) |
| FREE THROWS MADE | 6 | | vs UNI (N) (11/25/2022) |
| | 7 | | at ETSU (12/01/2022) |
| FREE THROW ATTEMPTS | 10 | | at ETSU (12/01/2022) |
| | 10 | | vs UNI (N) (11/25/2022) |
| | 10 | | Saint Joseph's (11/20/2022) |
| FREE THROW PERCENTAGE | .571 | (12-21) | at Missouri (02/02/2023) |
| | .591 | (13-22) | Samford (11/10/2022) |
| REBOUNDS | 20 | | Georgia (02/05/2023) |
| | 22 | | at LSU (01/01/2023) |
| ASSISTS | 4 | | at ETSU (12/01/2022) |
| | 7 | | at Florida (01/22/2023) |
| | 7 | | South Carolina (01/19/2023) |
| | 7 | | Mississippi St. (12/29/2022) |
| | 7 | | Saint Joseph's (11/20/2022) |
| STEALS | 5 | | South Carolina (01/19/2023) |
| | 6 | | at Alabama (02/16/2023) |
| | 6 | | at Tennessee (02/12/2023) |
| | 6 | | at Arkansas (01/16/2023) |
| | 6 | | Tennessee (01/08/2023) |
| | 6 | | at Ole Miss (01/05/2023) |
| | 6 | | Mississippi St. (12/29/2022) |
| | 6 | | vs UNI (N) (11/25/2022) |
| | 6 | | Saint Joseph's (11/20/2022) |
| BLOCKED SHOTS | 0 | | at Tennessee (02/12/2023) |
| | 0 | | Texas A&M (01/29/2023) |
| | 0 | | Tarleton St. (11/15/2022) |
| TURNOVERS | 9 | | Texas A&M (01/29/2023) |
| | 10 | | Alabama A&M (12/21/2022) |
| | 10 | | vs NC State (N) (11/24/2022) |
| | 10 | | Saint Joseph's (11/20/2022) |
| FOULS | 12 | | Alabama A&M (12/21/2022) |
| | 12 | | USC Upstate (11/29/2022) |



**2022-23 Vanderbilt Women's Basketball
Team High/Low Analysis
All games**

Opponent - Game Lows

| | | | |
|------------------------------|------|----------------------|------------------------------|
| POINTS | 44 | | at ETSU (12/01/2022) |
| | 45 | | USC Upstate (11/29/2022) |
| | 46 | | Alabama A&M (12/21/2022) |
| | 48 | | Tarleton St. (11/15/2022) |
| | 51 | | Samford (11/10/2022) |
| FIELD GOALS MADE | 15 | | Alabama A&M (12/21/2022) |
| | 16 | | Tarleton St. (11/15/2022) |
| FIELD GOAL ATTEMPTS | 40 | | Alabama A&M (12/21/2022) |
| | 42 | | Georgia (02/05/2023) |
| FIELD GOAL PERCENTAGE | .274 | (17-62) | at ETSU (12/01/2022) |
| | .333 | (16-48) | Tarleton St. (11/15/2022) |
| 3 PT FG MADE | 1 | | Kentucky (02/19/2023) |
| | 2 | | Georgia (02/05/2023) |
| | 2 | | at Florida (01/22/2023) |
| | 2 | | South Carolina (01/19/2023) |
| | 2 | | at ETSU (12/01/2022) |
| | 2 | | Austin Peay (11/17/2022) |
| 3 PT FG ATTEMPTS | 5 | | Georgia (02/05/2023) |
| | 6 | | Kentucky (02/19/2023) |
| 3 PT FG PERCENTAGE | .100 | (2-20) | at ETSU (12/01/2022) |
| | .105 | (2-19) | at Florida (01/22/2023) |
| FREE THROWS MADE | 4 | | UT Martin (12/04/2022) |
| | 4 | | USC Upstate (11/29/2022) |
| FREE THROW ATTEMPTS | 4 | | UT Martin (12/04/2022) |
| | 7 | | Mississippi St. (12/29/2022) |
| FREE THROW PERCENTAGE | .400 | (4-10) | USC Upstate (11/29/2022) |
| | .440 | (11-25) | at Columbia (11/13/2022) |
| REBOUNDS | 27 | | UT Martin (12/04/2022) |
| | 27 | | Austin Peay (11/17/2022) |
| ASSISTS | 6 | | Kentucky (02/19/2023) |
| | 6 | | at ETSU (12/01/2022) |
| | 6 | | Tarleton St. (11/15/2022) |
| STEALS | 2 | | at Tennessee (02/12/2023) |
| | 4 | | Kentucky (02/19/2023) |
| | 4 | | at Missouri (02/02/2023) |
| | 4 | | Texas A&M (01/29/2023) |
| | 4 | | at Florida (01/22/2023) |
| | 4 | | at ETSU (12/01/2022) |
| | 4 | | vs NC State (N) (11/24/2022) |
| | 4 | | Saint Joseph's (11/20/2022) |
| | 4 | | Tarleton St. (11/15/2022) |
| 4 | | Samford (11/10/2022) | |
| BLOCKED SHOTS | 1 | | Georgia (02/05/2023) |
| | 1 | | UT Martin (12/04/2022) |
| | 1 | | USC Upstate (11/29/2022) |
| | 1 | | at Western Ky. (11/07/2022) |
| TURNOVERS | 9 | | South Carolina (01/19/2023) |
| | 10 | | at Arkansas (01/16/2023) |
| FOULS | 10 | | at ETSU (12/01/2022) |
| | 13 | | vs UNI (N) (11/25/2022) |



**2022-23 Vanderbilt Women's Basketball
Player Highs Analysis
All games**

Vanderbilt - Individual Game Highs

| | | | |
|---|-------|---|---|
| POINTS | 41 | | Ciaja Harbison vs Texas A&M (01/29/2023) |
| | 34 | | Ciaja Harbison vs NC State (N) (11/24/2022) |
| | 31 | | Marnelle Garraud at Arkansas (01/16/2023) |
| | 31 | | Ciaja Harbison vs Lipscomb (12/18/2022) |
| | 31 | | Marnelle Garraud at Louisiana Tech (12/08/2022) |
| FIELD GOALS MADE | 14 | | Ciaja Harbison vs Texas A&M (01/29/2023) |
| | 11 | | Sacha Washington at Alabama (02/16/2023) |
| | 11 | | Ciaja Harbison vs Lipscomb (12/18/2022) |
| | 11 | | Marnelle Garraud at Louisiana Tech (12/08/2022) |
| | 11 | | Ciaja Harbison vs NC State (N) (11/24/2022) |
| FIELD GOAL ATTEMPTS | 26 | | Ciaja Harbison vs NC State (N) (11/24/2022) |
| | 21 | | Marnelle Garraud vs South Carolina (01/19/2023) |
| | 21 | | Ciaja Harbison at LSU (01/01/2023) |
| FIELD GOAL PERCENTAGE (min 5 made) | 1.000 | (5-5) | Yaubryon Chambers at Western Ky. (11/07/2022) |
| | .875 | (7-8) | Ciaja Harbison at Western Ky. (11/07/2022) |
| 3 PT FG MADE | 7 | | Marnelle Garraud at Arkansas (01/16/2023) |
| | 7 | | Marnelle Garraud at Louisiana Tech (12/08/2022) |
| 3 PT FG ATTEMPTS | 13 | | Marnelle Garraud vs Georgia (02/05/2023) |
| | 13 | | Marnelle Garraud at Louisiana Tech (12/08/2022) |
| 3 PT FG PERCENTAGE (min 2 made) | 1.000 | (4-4) | Jada Brown vs NC State (N) (11/24/2022) |
| | 1.000 | (2-2) | Demi Washington at Tennessee (02/12/2023) |
| | 1.000 | (2-2) | Ciaja Harbison at Western Ky. (11/07/2022) |
| FREE THROWS MADE | 12 | | Ciaja Harbison at Western Ky. (11/07/2022) |
| | 11 | | Ciaja Harbison vs Texas A&M (01/29/2023) |
| FREE THROW ATTEMPTS | 14 | | Ciaja Harbison at Western Ky. (11/07/2022) |
| | 13 | | Ciaja Harbison vs Texas A&M (01/29/2023) |
| FREE THROW PERCENTAGE (min 3 made) | 1.000 | (10-10) | Ciaja Harbison vs NC State (N) (11/24/2022) |
| | 1.000 | (9-9) | Demi Washington vs USC Upstate (11/29/2022) |
| | 1.000 | (7-7) | Ciaja Harbison vs Tennessee (01/08/2023) |
| | 1.000 | (6-6) | Ryanne Allen vs Arkansas (02/09/2023) |
| | 1.000 | (6-6) | Ciaja Harbison at Missouri (02/02/2023) |
| | 1.000 | (6-6) | Ciaja Harbison vs Alabama A&M (12/21/2022) |
| | 1.000 | (4-4) | Marnelle Garraud at Florida (01/22/2023) |
| | 1.000 | (4-4) | Sacha Washington at Florida (01/22/2023) |
| | 1.000 | (4-4) | Demi Washington vs Alabama A&M (12/21/2022) |
| | 1.000 | (4-4) | Bella LaChance vs Alabama A&M (12/21/2022) |
| | 1.000 | (4-4) | Ryanne Allen vs NC State (N) (11/24/2022) |
| | 1.000 | (4-4) | Sacha Washington vs Saint Joseph's (11/20/2022) |
| | 1.000 | (4-4) | Bella LaChance at Western Ky. (11/07/2022) |
| | 1.000 | (3-3) | Marnelle Garraud vs Kentucky (02/19/2023) |
| | 1.000 | (3-3) | Marnelle Garraud vs Arkansas (02/09/2023) |
| 1.000 | (3-3) | Yaubryon Chambers vs Texas A&M (01/29/2023) | |
| 1.000 | (3-3) | Ryanne Allen vs Samford (11/10/2022) | |
| REBOUNDS | 15 | | Sacha Washington vs Kentucky (02/19/2023) |
| | 12 | | Yaubryon Chambers vs Lipscomb (12/18/2022) |
| | 12 | | Sacha Washington vs Lipscomb (12/18/2022) |
| ASSISTS | 8 | | Ciaja Harbison vs Arkansas (02/09/2023) |
| | 8 | | Ciaja Harbison vs Alabama A&M (12/21/2022) |
| STEALS | 5 | | Ciaja Harbison at Missouri (02/02/2023) |
| | 5 | | Ciaja Harbison vs Texas A&M (01/29/2023) |
| | 5 | | Ciaja Harbison at Florida (01/22/2023) |
| BLOCKED SHOTS | 4 | | Sacha Washington at Columbia (11/13/2022) |
| | 3 | | Sacha Washington vs Arkansas (02/09/2023) |
| | 3 | | Sacha Washington at LSU (01/01/2023) |
| | 3 | | Marnelle Garraud vs UNI (N) (11/25/2022) |



2022-23 Vanderbilt Women's Basketball
Player Highs Analysis
All games

Vanderbilt - Individual Game Highs

| | | |
|-----------|---|---|
| TURNOVERS | 8 | Sacha Washington at Alabama (02/16/2023) |
| | 8 | Marnelle Garraud vs Georgia (02/05/2023) |
| FOULS | 5 | Yaubryon Chambers vs Texas A&M (01/29/2023) |
| | 5 | Sacha Washington vs Texas A&M (01/29/2023) |
| | 5 | Ryanne Allen vs South Carolina (01/19/2023) |
| | 5 | Ciaja Harbison at Arkansas (01/16/2023) |
| | 5 | Ryanne Allen vs Tennessee (01/08/2023) |
| | 5 | Bella LaChance at LSU (01/01/2023) |
| | 5 | Ryanne Allen at LSU (01/01/2023) |
| | 5 | Yaubryon Chambers vs Lipscomb (12/18/2022) |
| | 5 | Sacha Washington at Louisiana Tech (12/08/2022) |
| | 5 | Sacha Washington vs UNI (N) (11/25/2022) |
| | 5 | Amauri Williams vs NC State (N) (11/24/2022) |
| | 5 | Yaubryon Chambers vs Austin Peay (11/17/2022) |
| | 5 | Yaubryon Chambers at Columbia (11/13/2022) |
| 5 | Demi Washington at Western Ky. (11/07/2022) | |



**2022-23 Vanderbilt Women's Basketball
Player Highs Analysis
All games**

Opponent - Individual Game Highs

| | | | |
|---|-------|---------|---|
| POINTS | 31 | | Makayla Daniels vs Arkansas (02/09/2023) |
| | 25 | | Hayley Frank at Missouri (02/02/2023) |
| | 24 | | Brittney Smith vs Georgia (02/05/2023) |
| | 24 | | Kaitlyn Davis at Columbia (11/13/2022) |
| | 23 | | Samara Spencer at Arkansas (01/16/2023) |
| | 23 | | Rickeya Jackson vs Tennessee (01/08/2023) |
| | 23 | | Anna Larr Roberson at Louisiana Tech (12/08/2022) |
| | 23 | | Jaylin Foster at Western Ky. (11/07/2022) |
| FIELD GOALS MADE | 11 | | Makayla Daniels vs Arkansas (02/09/2023) |
| | 10 | | Anna Larr Roberson at Louisiana Tech (12/08/2022) |
| FIELD GOAL ATTEMPTS | 23 | | Makayla Daniels vs Arkansas (02/09/2023) |
| | 18 | | Angel Reese at LSU (01/01/2023) |
| | 18 | | Jalyn Holcomb vs Lipscomb (12/18/2022) |
| FIELD GOAL PERCENTAGE (min 5 made) | 1.000 | (8-8) | Aliyah Boston vs South Carolina (01/19/2023) |
| | 1.000 | (6-6) | Sara-Rose Smith at Missouri (02/02/2023) |
| 3 PT FG MADE | 5 | | Aaliyah Nye at Alabama (02/16/2023) |
| | 4 | | Makayla Daniels vs Arkansas (02/09/2023) |
| | 4 | | Lauren Hansen at Missouri (02/02/2023) |
| | 4 | | Angel Baker at Ole Miss (01/05/2023) |
| | 4 | | Seygan Robins vs UT Martin (12/04/2022) |
| | 4 | | Diamond Johnson vs NC State (N) (11/24/2022) |
| 3 PT FG ATTEMPTS | 13 | | Aaliyah Nye at Alabama (02/16/2023) |
| | 11 | | Makayla Daniels vs Arkansas (02/09/2023) |
| 3 PT FG PERCENTAGE (min 2 made) | 1.000 | (3-3) | Gabbie Green at Louisiana Tech (12/08/2022) |
| | 1.000 | (2-2) | Sara-Rose Smith at Missouri (02/02/2023) |
| | 1.000 | (2-2) | Kay Kay Green vs Texas A&M (01/29/2023) |
| | 1.000 | (2-2) | Emerson Green vs UNI (N) (11/25/2022) |
| FREE THROWS MADE | 10 | | Diamond Battles vs Georgia (02/05/2023) |
| | 8 | | Makayla Daniels at Arkansas (01/16/2023) |
| FREE THROW ATTEMPTS | 11 | | Erynn Barnum at Arkansas (01/16/2023) |
| | 10 | | Diamond Battles vs Georgia (02/05/2023) |
| | 10 | | Laeticia Amihere vs South Carolina (01/19/2023) |
| | 10 | | Makayla Daniels at Arkansas (01/16/2023) |
| | 10 | | Aleah Sorrentino vs Lipscomb (12/18/2022) |
| FREE THROW PERCENTAGE (min 3 made) | 1.000 | (10-10) | Diamond Battles vs Georgia (02/05/2023) |
| | 1.000 | (6-6) | Brittney Smith vs Georgia (02/05/2023) |
| | 1.000 | (6-6) | Hayley Frank at Missouri (02/02/2023) |
| | 1.000 | (6-6) | Mackenzie Smith vs Saint Joseph's (11/20/2022) |
| | 1.000 | (5-5) | Yamia Johnson vs Austin Peay (11/17/2022) |
| | 1.000 | (5-5) | Jada Roberson vs Austin Peay (11/17/2022) |
| | 1.000 | (4-4) | Erynn Barnum vs Arkansas (02/09/2023) |
| | 1.000 | (4-4) | Zoesha Smith vs Georgia (02/05/2023) |
| | 1.000 | (4-4) | Alberte Rimdal at Florida (01/22/2023) |
| | 1.000 | (4-4) | Zia Cooke vs South Carolina (01/19/2023) |
| | 1.000 | (4-4) | Jalyn Holcomb vs Lipscomb (12/18/2022) |
| | 1.000 | (4-4) | Camille Hobby vs NC State (N) (11/24/2022) |
| | 1.000 | (3-3) | Adebola Adeyeye vs Kentucky (02/19/2023) |
| | 1.000 | (3-3) | Megan Abrams at Alabama (02/16/2023) |
| | 1.000 | (3-3) | Jada Malone vs Texas A&M (01/29/2023) |
| | 1.000 | (3-3) | Jessika Carter vs Mississippi St. (12/29/2022) |
| REBOUNDS | 17 | | Angel Reese at LSU (01/01/2023) |
| | 15 | | Kamilla Cardoso vs South Carolina (01/19/2023) |
| ASSISTS | 12 | | Alexis Morris at LSU (01/01/2023) |
| | 10 | | Ainhoa Cea vs Lipscomb (12/18/2022) |



2022-23 Vanderbilt Women's Basketball
Player Highs Analysis
All games

Opponent - Individual Game Highs

| | | |
|----------------------|--|---|
| STEALS | 6 5 5 | Jaylin Foster at Western Ky. (11/07/2022) Sarah Ashlee Barker at Alabama (02/16/2023) Brittany Davis at Alabama (02/16/2023) |
| BLOCKED SHOTS | 4 3 3 3 3 3 3 3 3 3 | LaDazhia Williams at LSU (01/01/2023) Janiah Barker vs Texas A&M (01/29/2023) Ra Shaya Kyle at Florida (01/22/2023) Kierra Fletcher vs South Carolina (01/19/2023) Aliyah Boston vs South Carolina (01/19/2023) Laeticia Amihere vs South Carolina (01/19/2023) Jayla Ruffus-Milner at ETSU (12/01/2022) Saniya Rivers vs NC State (N) (11/24/2022) Jada Boyd vs NC State (N) (11/24/2022) |
| TURNOVERS | 10 9 | Mariah Adams vs Austin Peay (11/17/2022) Robyn Benton vs Kentucky (02/19/2023) |
| FOULS | 5 5 5 5 5 5 5 5 5 5 | Saylor Poffenbarger vs Arkansas (02/09/2023) Brittney Smith vs Georgia (02/05/2023) Kay Kay Green vs Texas A&M (01/29/2023) Marquesha Davis at Ole Miss (01/05/2023) Blythe Pearson vs Lipscomb (12/18/2022) Aleah Sorrentino vs Lipscomb (12/18/2022) Seygan Robins vs UT Martin (12/04/2022) Josie Storey vs UT Martin (12/04/2022) Jaida Patrick at Columbia (11/13/2022) Hope Sivori at Western Ky. (11/07/2022) |



**2022-23 Vanderbilt Women's Basketball
Category Leaders
All games**

Points

| ## | Player | G | Pts | Pts/G |
|----|--------------------|----|-----|-------|
| 11 | Harbison, Cija | 25 | 486 | 19.4 |
| 14 | Garraud, Marnelle | 28 | 397 | 14.2 |
| 35 | Washington, Sacha | 28 | 305 | 10.9 |
| 24 | Allen, Ryanne | 27 | 170 | 6.3 |
| 5 | Chambers, Yaubryon | 28 | 129 | 4.6 |
| 2 | Brown, Jada | 27 | 114 | 4.2 |
| 12 | Washington, Demi | 28 | 113 | 4.0 |
| 21 | LaChance, Bella | 28 | 102 | 3.6 |
| 32 | Williams, Amauri | 11 | 70 | 6.4 |

Scoring Average

| ## | Player | G | Pts | Pts/G |
|----|--------------------|----|-----|-------|
| 11 | Harbison, Cija | 25 | 486 | 19.4 |
| 14 | Garraud, Marnelle | 28 | 397 | 14.2 |
| 35 | Washington, Sacha | 28 | 305 | 10.9 |
| 32 | Williams, Amauri | 11 | 70 | 6.4 |
| 24 | Allen, Ryanne | 27 | 170 | 6.3 |
| 5 | Chambers, Yaubryon | 28 | 129 | 4.6 |
| 2 | Brown, Jada | 27 | 114 | 4.2 |
| 12 | Washington, Demi | 28 | 113 | 4.0 |
| 21 | LaChance, Bella | 28 | 102 | 3.6 |

Field Goal Percentage

| ## | Player | FG | Att | Pct |
|----|--------------------|-----|-----|------|
| 5 | Chambers, Yaubryon | 56 | 94 | .596 |
| 32 | Williams, Amauri | 24 | 49 | .490 |
| 35 | Washington, Sacha | 120 | 265 | .453 |
| 12 | Washington, Demi | 40 | 91 | .440 |
| 11 | Harbison, Cija | 162 | 406 | .399 |
| 14 | Garraud, Marnelle | 139 | 352 | .395 |
| 24 | Allen, Ryanne | 53 | 142 | .373 |
| 21 | LaChance, Bella | 27 | 85 | .318 |
| 2 | Brown, Jada | 39 | 138 | .283 |

Field Goal Attempts

| ## | Player | G | Att | Att/G |
|----|-------------------|----|-----|-------|
| 11 | Harbison, Cija | 25 | 406 | 16.2 |
| 14 | Garraud, Marnelle | 28 | 352 | 12.6 |
| 35 | Washington, Sacha | 28 | 265 | 9.5 |
| 24 | Allen, Ryanne | 27 | 142 | 5.3 |
| 2 | Brown, Jada | 27 | 138 | 5.1 |

Field Goals Made

| ## | Player | G | Made | Made/G |
|----|--------------------|----|------|--------|
| 11 | Harbison, Cija | 25 | 162 | 6.5 |
| 14 | Garraud, Marnelle | 28 | 139 | 5.0 |
| 35 | Washington, Sacha | 28 | 120 | 4.3 |
| 5 | Chambers, Yaubryon | 28 | 56 | 2.0 |
| 24 | Allen, Ryanne | 27 | 53 | 2.0 |

3-Point FG Percentage

| ## | Player | 3FG | Att | Pct |
|----|-------------------|-----|-----|------|
| 14 | Garraud, Marnelle | 78 | 195 | .400 |
| 32 | Williams, Amauri | 2 | 5 | .400 |
| 12 | Washington, Demi | 5 | 13 | .385 |
| 24 | Allen, Ryanne | 36 | 103 | .350 |
| 2 | Brown, Jada | 28 | 95 | .295 |
| 21 | LaChance, Bella | 9 | 32 | .281 |
| 11 | Harbison, Cija | 22 | 82 | .268 |

3-Point FG Attempts

| ## | Player | G | Att | Att/G |
|----|-------------------|----|-----|-------|
| 14 | Garraud, Marnelle | 28 | 195 | 7.0 |
| 24 | Allen, Ryanne | 27 | 103 | 3.8 |
| 2 | Brown, Jada | 27 | 95 | 3.5 |
| 11 | Harbison, Cija | 25 | 82 | 3.3 |
| 21 | LaChance, Bella | 28 | 32 | 1.1 |

3-Point FG Made

| ## | Player | G | Made | Made/G |
|----|-------------------|----|------|--------|
| 14 | Garraud, Marnelle | 28 | 78 | 2.8 |
| 24 | Allen, Ryanne | 27 | 36 | 1.3 |
| 2 | Brown, Jada | 27 | 28 | 1.0 |
| 11 | Harbison, Cija | 25 | 22 | 0.9 |
| 21 | LaChance, Bella | 28 | 9 | 0.3 |



2022-23 Vanderbilt Women's Basketball
Category Leaders
All games

Free Throw Percentage

| ## | Player | Made | Att | Pct |
|----|--------------------|------|-----|------|
| 21 | LaChance, Bella | 39 | 46 | .848 |
| 14 | Garraud, Marnelle | 41 | 50 | .820 |
| 11 | Harbison, Cija | 140 | 173 | .809 |
| 2 | Brown, Jada | 8 | 10 | .800 |
| 24 | Allen, Ryanne | 28 | 37 | .757 |
| 12 | Washington, Demi | 28 | 39 | .718 |
| 35 | Washington, Sacha | 65 | 104 | .625 |
| 5 | Chambers, Yaubryon | 17 | 28 | .607 |
| 32 | Williams, Amauri | 20 | 34 | .588 |

Free Throw Attempts

| ## | Player | G | Att | Att/G |
|----|-------------------|----|-----|-------|
| 11 | Harbison, Cija | 25 | 173 | 6.9 |
| 35 | Washington, Sacha | 28 | 104 | 3.7 |
| 14 | Garraud, Marnelle | 28 | 50 | 1.8 |
| 21 | LaChance, Bella | 28 | 46 | 1.6 |
| 12 | Washington, Demi | 28 | 39 | 1.4 |

Free Throws Made

| ## | Player | G | Made | Made/G |
|----|-------------------|----|------|--------|
| 11 | Harbison, Cija | 25 | 140 | 5.6 |
| 35 | Washington, Sacha | 28 | 65 | 2.3 |
| 14 | Garraud, Marnelle | 28 | 41 | 1.5 |
| 21 | LaChance, Bella | 28 | 39 | 1.4 |
| 24 | Allen, Ryanne | 27 | 28 | 1.0 |

Rebounds

| ## | Player | G | Reb | Reb/G |
|----|--------------------|----|-----|-------|
| 35 | Washington, Sacha | 28 | 207 | 7.4 |
| 5 | Chambers, Yaubryon | 28 | 133 | 4.8 |
| 14 | Garraud, Marnelle | 28 | 91 | 3.3 |
| 12 | Washington, Demi | 28 | 75 | 2.7 |
| 11 | Harbison, Cija | 25 | 74 | 3.0 |

Assists

| ## | Player | G | Ast | Ast/G |
|----|-------------------|----|-----|-------|
| 11 | Harbison, Cija | 25 | 111 | 4.4 |
| 14 | Garraud, Marnelle | 28 | 65 | 2.3 |
| 21 | LaChance, Bella | 28 | 35 | 1.3 |
| 35 | Washington, Sacha | 28 | 31 | 1.1 |
| 24 | Allen, Ryanne | 27 | 28 | 1.0 |

Rebounds Average

| ## | Player | G | Reb | Reb/G |
|----|--------------------|----|-----|-------|
| 35 | Washington, Sacha | 28 | 207 | 7.4 |
| 5 | Chambers, Yaubryon | 28 | 133 | 4.8 |
| 32 | Williams, Amauri | 11 | 41 | 3.7 |
| 14 | Garraud, Marnelle | 28 | 91 | 3.3 |
| 11 | Harbison, Cija | 25 | 74 | 3.0 |

Steals

| ## | Player | G | Stl | Stl/G |
|----|--------------------|----|-----|-------|
| 11 | Harbison, Cija | 25 | 62 | 2.5 |
| 14 | Garraud, Marnelle | 28 | 45 | 1.6 |
| 5 | Chambers, Yaubryon | 28 | 43 | 1.5 |
| 12 | Washington, Demi | 28 | 27 | 1.0 |
| 35 | Washington, Sacha | 28 | 22 | 0.8 |

Offensive Rebounds

| ## | Player | G | OReb | OReb/G |
|----|--------------------|----|------|--------|
| 35 | Washington, Sacha | 28 | 85 | 3.0 |
| 5 | Chambers, Yaubryon | 28 | 51 | 1.8 |
| 14 | Garraud, Marnelle | 28 | 24 | 0.9 |
| 12 | Washington, Demi | 28 | 21 | 0.8 |
| 11 | Harbison, Cija | 25 | 14 | 0.6 |

Blocked Shots

| ## | Player | G | Blk | Blk/G |
|----|--------------------|----|-----|-------|
| 35 | Washington, Sacha | 28 | 41 | 1.5 |
| 5 | Chambers, Yaubryon | 28 | 12 | 0.4 |
| 14 | Garraud, Marnelle | 28 | 11 | 0.4 |
| 32 | Williams, Amauri | 11 | 5 | 0.5 |
| 24 | Allen, Ryanne | 27 | 5 | 0.2 |

Defensive Rebounds

| ## | Player | G | DReb | DReb/G |
|----|--------------------|----|------|--------|
| 35 | Washington, Sacha | 28 | 122 | 4.4 |
| 5 | Chambers, Yaubryon | 28 | 82 | 2.9 |
| 14 | Garraud, Marnelle | 28 | 67 | 2.4 |
| 11 | Harbison, Cija | 25 | 60 | 2.4 |
| 12 | Washington, Demi | 28 | 54 | 1.9 |

Minutes

| ## | Player | G | Min | Min/G |
|----|-------------------|----|------|-------|
| 14 | Garraud, Marnelle | 28 | 1002 | 35:47 |
| 11 | Harbison, Cija | 25 | 914 | 36:34 |
| 35 | Washington, Sacha | 28 | 713 | 25:27 |
| 21 | LaChance, Bella | 28 | 673 | 24:03 |
| 2 | Brown, Jada | 27 | 605 | 22:25 |



2022-23 Vanderbilt Women's Basketball
Category Leaders
All games

Page 3/3
as of Feb 19, 2023

Fouls

| ## | Player | G | PF | PF/G |
|----|--------------------|----|----|------|
| 5 | Chambers, Yaubryon | 28 | 82 | 2.9 |
| 35 | Washington, Sacha | 28 | 75 | 2.7 |
| 14 | Garraud, Marnelle | 28 | 74 | 2.6 |
| 24 | Allen, Ryanne | 27 | 74 | 2.7 |
| 12 | Washington, Demi | 28 | 62 | 2.2 |

Turnovers

| ## | Player | G | TO | TO/G |
|----|--------------------|----|----|------|
| 11 | Harbison, Cija | 25 | 79 | 3.2 |
| 14 | Garraud, Marnelle | 28 | 67 | 2.4 |
| 35 | Washington, Sacha | 28 | 61 | 2.2 |
| 5 | Chambers, Yaubryon | 28 | 48 | 1.7 |
| 2 | Brown, Jada | 27 | 40 | 1.5 |

Foul Outs

| ## | Player | G | FO |
|----|--------------------|----|----|
| 5 | Chambers, Yaubryon | 28 | 4 |
| 35 | Washington, Sacha | 28 | 3 |
| 24 | Allen, Ryanne | 27 | 3 |
| 11 | Harbison, Cija | 25 | 1 |
| 32 | Williams, Amauri | 11 | 1 |