



CAPITAL REGION



June 1-2, 2024

June 8-9, 2024

PARADE OF HOMES

Hosted by the Capital Region Builders & Remodelers Association
with title sponsor Trustco Bank



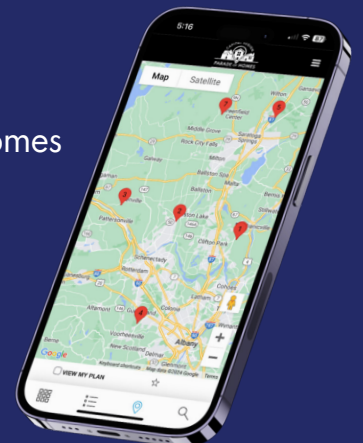
THE CAPITAL REGION'S PREMIER RESIDENTIAL CONSTRUCTION EVENT

Enjoy this self-guided tour - all while supporting the Center for Disability Services



DOWNLOAD THE APP

Cap Region Parade of Homes



Welcome to the 2024 Capital Region Parade of Homes!

The Capital Region Builders & Remodelers Association (CRBRA) is very excited to be hosting the 22nd annual Capital Region Parade of Homes the first two weekends in June – 6/1-6/2 and 6/8-6/9 – from 11 a.m. to 5 p.m. each day. The Parade of Homes, the Capital Region's premier residential home building event, is a self-guided tour of new construction homes that are fully finished, landscaped and professionally decorated.

Our Parade of Homes is YOUR Parade. Your ticket entitles you to visit all the homes as many times as you wish across both weekends. Enjoy the relaxed pace as you tour the homes ranging from Voorheesville to Glenville to Saratoga Springs. We think you'll appreciate the variety of home types, styles and floor plans, innovative design features and inspiring finishes. As you tour the homes, take a moment to talk to the builders and learn more about their company's offerings.

Our builders love competition and are always excited for the reveal of the People's Choice award winners. **You be the judge – vote for your favorite homes at capitalregionparadeofhomes.com/voteweb/awards.**

On behalf of CRBRA's Parade of Homes Committee, thank you for attending the 2024 Parade of Homes! We're grateful that this community event gives us the opportunity to give back by **donating the proceeds from ticket sales to The Center for Disability Services**. This year's donation will be used to purchase MOVE equipment, which helps children who struggle with mobility to participate in home, school, work, and community environments more fully.

Please enjoy the Parade of Homes and the beauty of the Capital Region!



Jim Carpenter
2024 Parade of Homes Chairperson



CONTENTS

MAP	3
SPONSORS	4
ABELE HOMES	7
AMERICAN TIMBER WORKS	9
BAKER CONTRACTING	13
BELLA HOME BUILDERS	15
BELMONTE BUILDERS	19
BELMONTE BUILDERS	21
KODIAK CONSTRUCTION	25



COMMITTEE MEMBERS:

Lindsey Belmonte, Belmonte Builders
Jim Carpenter, Curtis Lumber, Chairperson
Nick Casso, Bellevue Builders Supply
Billy DeOrazio, Bellevue Builders Supply
Denise DeSalvatore, Tailored Real Estate Group
Erik Kohler, Erik Kohler Homes
Jaylene Leonbruno, Tailored Real Estate Group
Julie Maleski-Putzel, JMP Interiors
Steve Niro, Bellevue Builders Supply
Amy Paigo, Teakwood Builders
Pratik Shah, Trustco Bank
Kara Woitkoski, Schrader & Company

STAFF:

Kristen Egelston, Executive Officer
Vicki Miller, Membership & Events Manager

QUESTIONS? Call 518.579.0066.



DOWNLOAD OUR APP!

Cap Region Parade of Homes

Home details • Turn-by-turn directions • E-tickets

Please note: Editorial and contents of this magazine reflect the records of the Capital Region Builders & Remodelers Association. CRBRA staff has done their best to provide useful and accurate information, but please take into account that some information does change. Camelot Print & Copy Centers, publishers and CRBRA take no responsibility for the accuracy of the information printed, inadvertent omissions, printing errors, nor do they endorse products and services. CRBRA takes no responsibility regarding representations or warranties concerning the content of advertisements of products/services for a particular use, including all information, graphics, copyrighted materials, and assertions including in said advertisements. The reader is advised to independently check all information before basing decisions on such information.

PARADE OF HOMES LOCATIONS & MAP



*Home locations are approximate in relation to scale. Please use the Parade App for exact locations.

- 1 ABELE HOMES**
 9 Magnolia Drive
 Halfmoon, NY 12065
- 2 AMERICAN TIMBER WORKS**
 129 Hetcheltown Road
 Glensville, NY 12302
- 3 BAKER CONTRACTING**
 624 Hoffman's Hill Road
 Glensville, NY 12302
- 4 BELLA HOME BUILDERS**
 17 Dutch Hill Terrace
 Voorheesville, NY 12186
- 5 BELMONTE BUILDERS**
 2 Daintree Drive
 Saratoga Springs, NY
 12866
- 6 BELMONTE BUILDERS**
 13 Silver Oak Drive
 Halfmoon, NY 12065
- 7 KODIAK CONSTRUCTION**
 9 Crestwood Drive
 Greenfield Center, NY
 12833



**DOWNLOAD OUR APP
FOR TURN-BY-TURN DIRECTIONS!**

▶ Cap Region Parade of Homes

THANK YOU TO OUR SPONSORS

TITLE



**TRUSTCO
BANK**[®]
Your Home Town Bank

GOLD



THE **DAILY GAZETTE**
www.dailygazette.com
When Credibility Matters

SILVER

- ▶ Andersen Windows
- ▶ Apollo Heating
- ▶ AZEK Building Products
- ▶ Best Fire
- ▶ California Closets
- ▶ Concord Pools & Spas
- ▶ GAF
- ▶ GNH Lumber
- ▶ Granite & Marble Works
- ▶ Innovations by VP Supply
- ▶ Paula McCormick Interiors
- ▶ Pella by Crawford
- ▶ Redbud Development
- ▶ Towne TV
- ▶ Trus Joist
- ▶ Wolberg Lighting Design & Electrical Supply

PLATINUM



Earl B. Feiden
Inc.
APPLIANCE



Westlake
Royal Building Products™

BRONZE

- ▶ 84 Lumber
- ▶ Adirondack Trust Company
- ▶ American Timber Works
- ▶ BDB Paving
- ▶ Best Tile
- ▶ Comalli Electric
- ▶ David-Louis Floor Covering
- ▶ Floor Source
- ▶ FASTSIGNS of Saratoga Springs
- ▶ Marcella's Appliance Center
- ▶ Owens Corning
- ▶ TPL Flooring
- ▶ Twin D Associates, Inc.
- ▶ Young Landscaping

STONE

- ▶ A.W Hamel Stair Mfg., Inc.
- ▶ Boise Cascade
- ▶ Busch Products
- ▶ Frank Webb Home
- ▶ Homeowners Advantage
- ▶ Parksite
- ▶ Pioneer Bank
- ▶ Ply Gem
- ▶ Siewert Equipment
- ▶ UFP Site Built



**WORK WITH A
CRBRA MEMBER
FOR ALL YOUR
RESIDENTIAL
CONSTRUCTION
NEEDS.**

**Visit the Member Directory at CRBRA.com
to access our vetted list of members who agree to abide
by a strict Code of Ethics.**



W

BE BOUNDLESS™

**THE PRODUCTS TO DO EVERYTHING.
THE POWER TO DO EVEN MORE.**

We have the tools and technology to tell design stories on a bigger scale and on a more personal level. There are no limits to how far we innovate, how deeply we express, how strongly we commit and how boldly we go. **Together let's Be Boundless™.**

CEDAR RENDITIONS®

**exterior®
PORTFOLIO**

**ROYAL®
Siding**

Westlake
Royal Building Products™

© 2024 Westlake Royal Building Products

[WestlakeRoyalBuildingProducts.com](https://www.WestlakeRoyalBuildingProducts.com)

SIDING & ACCESSORIES TRIM & MOULDINGS ROOFING STONE WINDOWS OUTDOOR LIVING

Square footage: 2,455 | Bedrooms: 3 | Baths: 3

ABELE HOMES

abelehomes.com

JUNIPER RIDGE

9 Magnolia Drive
Halfmoon, NY 12065

DIRECTIONS

From I-87, take exit 9 for NY-146 East toward Halfmoon. In 2.4 miles, turn right on NY-236 South and continue for a half mile. Turn left on Betts Lane. At the traffic circle, take the first exit onto Magnolia Drive. The house will be on the right.




JUNIPER
R I D G E

ABOUT THIS HOME

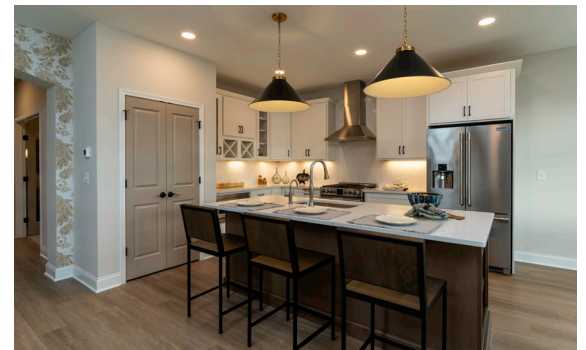
- Well-appointed kitchen, centrally located to great room, casual dining area and paver patio - ideal for entertaining.
- Stunning primary bedroom suite features expansive tray ceiling, large walk-in closet with window and custom shelving.
- Primary bathroom suite features custom extra deep tiled shower accented with niche, frameless shower door and specialty tile.
- Foyer hallway accented with wood tambour wall treatments and wallpaper.
- Spacious lower-level features sizeable flex room, generous game room and a full bathroom, allowing for versatile living and entertainment options.
- Exterior highlights include the 8' tall front entry door and Pella Lifestyles black windows (interior and exterior).

ABOUT THE BUILDER

Abele Homes is a family-owned and operated company that treats their customers like family. For 40 years, they've taken great pride in the houses they've built. Their mission is to provide a wonderful, quality home for their customers. Abele Homes strives to create communities that are visually pleasing, well-designed, and well-maintained. Outstanding craftsmanship, quality materials and beautiful floorplans are all part of an Abele-built home. Abele Homes has a long and well-established history in the Capital Region with a strong connection to Southern Saratoga County.

CONTACT

Moe Abele
moe@abelebuilders.com
518.491.1173





BUILD BETTER WITH BELLEVUE.



Bellevue Builders Supply is the area's leading resource for building and remodeling products and services. We offer everything from high-performance roofing and siding to stylish cabinetry, with options for every budget. You can count on exceptional service and the best value for your money.

Cabinetry • Roofing • Siding • Windows • Doors • Decking • Millwork • Stairs • Hardware • Building Products



Contact us today to discuss your next project!
500 Duanesburg Road, Schenectady • 518-355-7190
BellevueBuilders.com

Square footage: 2,920 | Bedrooms: 4 | Baths: 3.5

AMERICAN TIMBER WORKS

atwhomes.com

OWL CREEK ESTATES

129 Hetcheltown Road
Glenville, NY 12302

DIRECTIONS

From I-87, take exit 9 for NY-146 West toward Clifton Park. Continue 2.5 miles. At the traffic circle, take the second exit to stay on NY-146. Continue straight onto Glenridge Road. At the traffic circle, take the first exit onto Maple Avenue. Merge onto Hetcheltown Road. In one mile, the home is on the left.



ABOUT THIS HOME

Discover luxury living in this exquisite 2,920 square foot home nestled in Glenville, NY. Featuring four generously sized bedrooms and two and a half baths, this residence offers unparalleled elegance and comfort. With high-end finishes, spacious living areas, and modern amenities throughout, this home provides a perfect blend of style and functionality. Enjoy the tranquility of suburban living in this prestigious Glenville neighborhood.

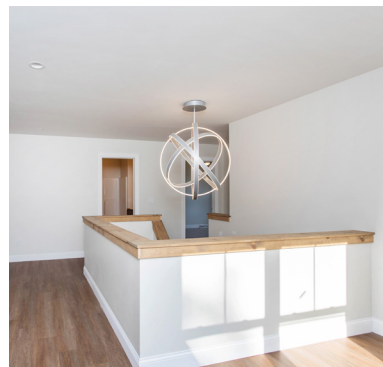
Owl Creek Estates boasts spacious lots, lush landscaping, and top-notch amenities, creating an exclusive enclave for discerning homeowners seeking upscale living.

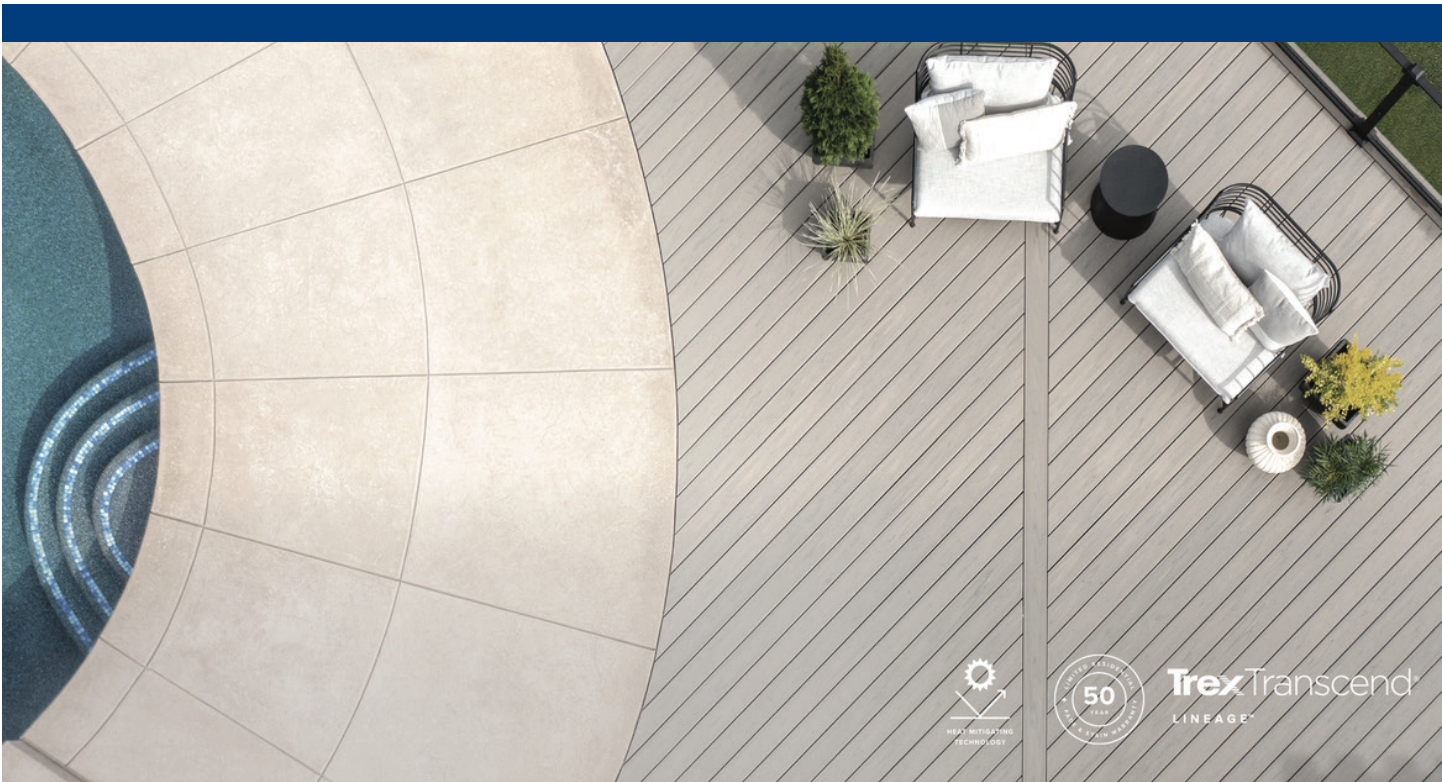
ABOUT THE BUILDER

American Timber Works is a family-owned and operated construction company with an outstanding reputation for quality, on-time completion, and client satisfaction. Our mission is to build elegant custom homes for those who appreciate true quality and diligence. We have spent time perfecting a unique process that provides efficiency, dependability, and clarity. Inside every structure we build, you will discover value, integrity, high-quality materials, mindfulness, superior craftsmanship, and exceptional architectural design.

CONTACT

Kristen Raffensperger
kraffensperger@atwhomes.com
518.631.4499





Trex Transcend
LINEAGE™



Trex Select
EARTH TONES

Made for all the ways we live outdoors.

Trex® offers a wide array of composite decking, railing and accessories to match every outdoor vision - and any budget. Backed by warranties of up to 50 years, Trex is durable, beautiful, and made to stand up to all the ways you want to live outdoors. Find the Trex products that are right for you.



99 RAILROAD AVE., ALBANY, NY
866-320-3743
eriematerials.com



Trex Enhance
NATURALS



Trex Enhance
BASICS



Proudly Serving New York's Capital Region for 40 Years




1220 Central Avenue • Albany NY 12205
518-438-0323 • fax 518-438-3207
www.BuildersKitchens.com

- Our experienced professional staff has specialized in working with builders and remodelers since 1983.
- Advanced computer-aided design capability allows customers to visualize their cabinetry project before construction.
- BKI stocks four lines of Kitchen Kompact cabinetry at competitive prices for immediate pick up.
- BKI offers two semi-custom lines of Schrock cabinetry and a full custom line of Decora.
- BKI is the Premiere Cambria Dealer in the Albany area.

FLOOR & DECOR



EXPLORE DESIGN & STYLE

At Floor & Decor you'll find the latest trends at everyday low prices. We have thousands of styles for any budget. We even offer free Design Services to help get you started. Stop by today!

ALBANY
1425 Central Ave, Albany, NY 12205 | 518-242-4753
flooranddecor.com

*Providing the finest in home appliances for 98 years.
Support your community, buy from a locally owned and operated business.*



MONOGRAM



Earl B. Feiden

— APPLIANCE —

FAMILY OWNED AND OPERATED SINCE 1926.

www.EarlBFeiden.com



1771 Route 9, Clifton Park
518-383-2215

785 Route 9, Latham
518-785-8555

661 Broadway, Kingston
845-331-2230

Square footage: 4,500 | Bedrooms: 5 | Full Baths: 4
Half Baths: 2

BAKER CONTRACTING

bakercontracting.com

CUSTOM HOME

624 Hoffman's Hill Road
Glenville, NY 12302

DIRECTIONS

From I-87, take exit 9 for NY-146 West toward Clifton Park. Continue on NY 146 West as it turns into Glenridge Road. At the traffic circle, take the second exit to stay on Glenridge Road and continue onto Van Buren Road. Turn right onto Swaggertown Road. After two miles, turn left onto Bolt Road, travel one mile and turn right onto NY 147 North. After three miles, turn left onto West Glenville Road, continue for one mile then turn left onto Wolf Hollow Road. Continue onto Hoffman's Hill Road. The home is on the left.

ABOUT THIS HOME

This sprawling, modern masterpiece sits on more than 200 acres with beautiful views in every direction. Features of this custom built luxury home include: indoor and outdoor fireplaces, spiral staircase to a rooftop deck, a large wrap-around deck accessible from the owner's suite and office, wet bar, walk-in pantry, and a huge timber framed outdoor living space with a hot tub and inground pool.

ABOUT THE BUILDER

Baker Contracting, led by owner Scott Baker, has been providing customers with consistently high quality residential and commercial construction services in the greater Capital Region for more than 12 years. Whether it's a custom construction on a bare lot or a complete renovation of a historical property, we streamline the project and handle all aspects of building from acquiring permits to the final clean-up. Our many repeat customers and long existing relationships with subcontractors and material suppliers, cultivated over Scott's 25-year career in the construction industry, speak to our team's commitment to always provide top quality, cost effective projects.

CONTACT

Scott Baker
scott@bakercontracting.com
518.858.5790



Helping You To Build Our Communities!



Ballston Spa • Schuylerville • East Greenbush • Delmar • Schaghticoke
Hoosick • Perth • Fort Plain • Schroon Lake • Plattsburgh • Queensbury
Warrensburg • Granville • Ray Brook • Norwich • Delhi • Hamilton • Sidney
New Berlin • Waterville • Richmondville • Burlington VT • Williston VT

CURTISLUMBER.COM



CUSTOM HOME

17 Dutch Hill Terrace
Voorheesville, NY 12186

DIRECTIONS

Take I-87 South to U.S. 20 West turning right onto Western Avenue and an immediate left onto Church Road. After 1.5 miles, turn left onto Johnston Road and continue onto Normanskill Road. Turn right onto Wormer Road and travel 0.6 miles. Turn right onto Dutch Hill Terrace. The home is on the right.



ABOUT THIS HOME

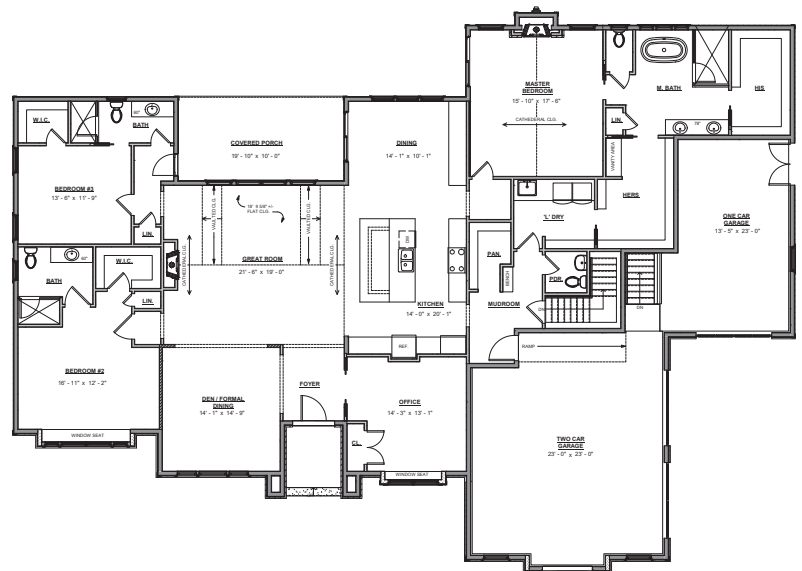
- Beautiful custom ranch with inviting open plan
- Gourmet kitchen with stunning waterfall sides at the island
- Primary bedroom suite with ensuite bathroom, fireplace, his and her closets
- Two additional ensuite bedrooms
- Lutron Ketra Circadian Lighting throughout the home
- Sonance Whole Home Speaker System
- Creston Automated Control System
- Outdoor living oasis featuring kitchen, fireplace, pool, Sonance Outdoor Speaker System, Coastal Source Landscape lighting and Seura Outdoor TV

ABOUT THE BUILDER

For more than three decades, Bella Home Builders has been remodeling and constructing award-winning, quality homes in the Capital Region. Every house is constructed with Bella Homes impeccably high standards and unique, one-of-a-kind designs, which are suited to each client's needs. "I pride myself on quality," says Founder and President David DePaulo, a third-generation builder. "It's a real passion of mine to develop and design, and we never build the same house twice." DePaulo believes in hard work and attention to detail, and with his incredible team of experts (with decades of combined experience), Bella Homes builds dream houses for families, couples, individuals, and young professionals alike.

CONTACT

Melissa Barnes
melissa@bellahomebuildersinc.com
518.914.9093



DOWNLOAD THE PARADE APP

Features include:

- Turn-by-turn directions
- Plan your route
- Home details
- Photos
- E-tickets
- Idea Book for notes



Scan the QR code or search "Cap Region Parade of Homes" in your phone's App Store

Redbud
Development Inc.
518.691.0428
WWW.REDBUDDEVELOPMENT.COM

**OUTDOOR
DESIGN & BUILD
PROFESSIONALS**

BUILDERS
INSTALLED PRODUCTS

518-434-0432
BUILDERSOFALBANY.COM

OUR SERVICES
INSULATION
SPRAY FOAM
GUTTERS
WIRE SHELVING
BATH ACCESSORIES

THE PINK PANTHER(tm) & (c) 1964-2017 MGM. The color PINK is a registered trademark of Owens Corning. Builders Installed Products is an independent Contractor and is not an affiliate of Owens Corning Insulating Systems, LLC or its affiliated companies.



CALIFORNIA CLOSETS®

Complimentary in-home or virtual design consultation

LATHAM Peter Harris Plaza, Rt 7
518.785.5723 californiaclosets.com

©2022 California Closet Company, Inc. All rights reserved.
Franchises independently owned and operated.

TRUSTED BUILDING PRODUCTS.

Engineered for
excellence.

TJI® Joists
Microllam® LVL
Parallam® PSL
TimberStrand® LSL



Trus Joist™
Weyerhaeuser

Weyerhaeuser.com/WoodProducts



MARVIN 

TRANSFORM YOUR HOME

Breathe new life into your space with thoughtfully designed, energy-efficient windows & doors from Marvin®.

Experience GNH's unmatched service and selection—visit or call to schedule your free consultation today.



898 New Loudon Rd, Latham, NY • 518-313-1229



APPOLO HEATING

Degrees Above The Rest, *SINCE 1968!*



RESIDENTIAL NEW CONSTRUCTION

CALL TODAY! 866-242-4347

CUSTOM HVAC SOLUTIONS FOR YOUR HOME

At Appolo, we are committed to providing the best HVAC solutions for our customers. We take pride in building relationships with the communities we serve and partner with local charities, educational programs, fundraisers, and community-supporting events.

Our experienced installers and service technicians can handle any job, big or small. We work with customers to design a heating and cooling system that best meets their needs and budget. Plus, with the right equipment, you can maximize energy efficiency for the greatest savings and most cost-effective operation possible.

At Appolo, we are not just an HVAC company, we are a community partner. Thank you for being a part of our mission to make a positive impact in the world.

The Center for Disability Services would like to thank the Capital Region Builders and Remodelers Association and this year's home builders:

Abele Homes

American Timber Works

Baker Contracting

Bella Home Builders

Belmonte Builders

Kodiak Construction

Center for 
Disability Services

Where people get better at life™

Proceeds from ticket sales will benefit
the Center for Disability Services



Square footage: 2,956 | Bedrooms: 4 | Baths: 3

BELMONTE BUILDERS

belmontebuilders.com

FOREST GROVE

2 Daintree Drive
Saratoga Springs, NY 12866

DIRECTIONS

From I-87, take exit 15 to NY-50 North, travel east for two miles and turn left onto Jones Road. At the traffic circle continue straight onto Branch Boulevard. Stay straight into designated parking lot. The home is on the right.



ABOUT THIS HOME

- Charming cottage/bungalow with an open floor plan that's perfect for entertaining & comfortable living.
- Gourmet kitchen features a large working island with a rich, bourbon-stained finish and matching range hood, stainless steel appliances, and an electric induction range.
- The primary bedroom features a cathedral ceiling and chandelier with a large attached bathroom and two walk-in closets.
- Two additional bedrooms and a full bath enjoy the privacy of an alcove off the foyer.
- Formal study with French doors and floor-to-ceiling custom built-in bookcases.
- Partially finished basement with a media room and a bedroom with a full bath.
- MiraTEC wrapped screened porch with removable plexiglass panels, leading to the outdoor living space with a large paver patio, an outdoor kitchen and fire pit.

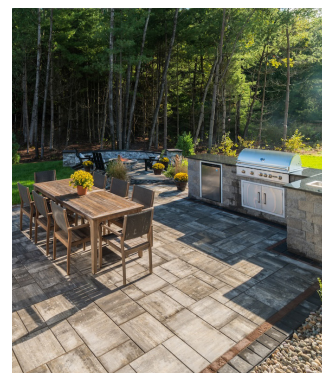


ABOUT THE BUILDER

Belmonte Builders has been building high-quality custom homes in the Capital Region for over 40 years. A family-owned business, Belmonte takes pride in working closely with each and every customer to personalize their home to meet their unique needs. Visit any Belmonte model home to see the flow of the floor plan, the quality of the fixtures, the integrity of the construction and the loving attention to detail. These are the building blocks that our success stands on today.

CONTACT

Sharon Byrne
sharon@belmontebuilders.com
518.527.4914



TOWNE TV

AUDIO • VIDEO • HOME THEATRE
• HOME AUTOMATION

Where you always get...the Best in Towne!

**BIG BOX PRICING
WITH
A PERSONAL TOUCH.**



"I Got a Guy!"

TowneTV.com 518.355.1020
3125 Carman Rd, Schenectady, NY



2nd Generation
family-owned



Over 200
years experience



25+
TVs on display



11.2.2 Dolby Atmos
Theater on display

Best Fire

HEARTH & PATIO

**There's nothing builder-grade about
a Best Fire fireplace.**

Check out Best Fire's fireplaces featured in these homes:

Bella Home Builders
Belmonte Builders
Kodiak Construction

Trusted by Home Builders and Homeowners for 45 years.



CAPITAL
PAINTING SERVICES INC

OUR SERVICES:

- Residential
- Commercial
- Kitchen cabinets
- Deck refinishing
- Popcorn ceiling removal
- Wallpaper removal



518.860.0883



capitalpaintingservices.com

Free estimates!



Square footage: 2,397 | Bedrooms: 4 | Baths: 2.5



BELMONTE BUILDERS

belmontebuilders.com

JUNIPER RIDGE

13 Silver Oak Drive
Halfmoon, NY 12065

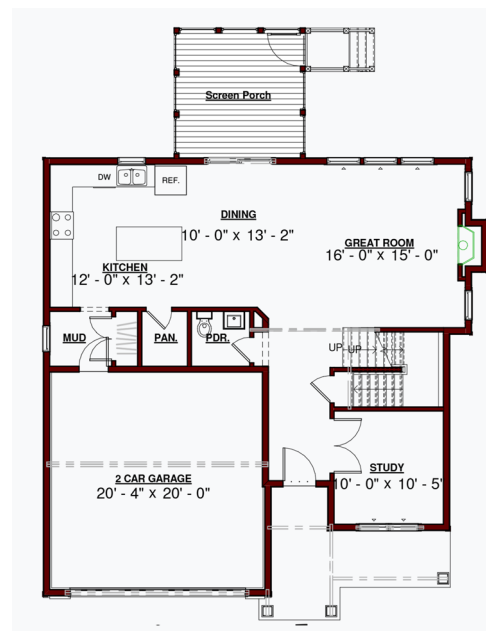
DIRECTIONS

From I-87, take exit 9 for NY-146 East toward Halfmoon. In 2.4 miles, turn right on NY-236 South and continue for a half mile. Turn left on Betts Lane. Follow the road onto Magnolia Drive and turn left on Silver Oak Drive. The house is on the right.

JUNIPER R I D G E

ABOUT THIS HOME

This traditional floor plan has room for everything. A welcoming porch and large entry foyer make a great first impression. Hardwood floors extend throughout this home's shared spaces including the formal study with French doors and the second floor loft. It opens to the kitchen featuring white cabinets, black quartz countertops, a large island and a dining space for the family to enjoy a meal together. All within close proximity to a screened porch that descends to a nice outdoor living space. The great room features large windows and a gas burning fireplace with a black granite surround. The primary bedroom suite, located upstairs, features a cathedral ceiling, tiled bath and a spacious walk-in closet. Three additional bedrooms share a hallway bath on the second floor.

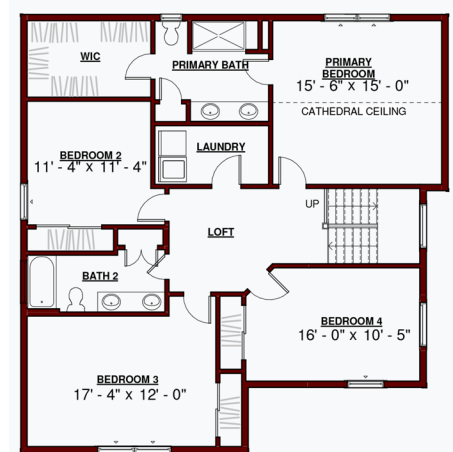


FIRST FLOOR

ABOUT THE BUILDER

Belmonte Builders has been building high-quality custom homes in the Capital Region for over 40 years. A family-owned business, Belmonte takes pride in working closely with each and every customer to personalize their home to meet their unique needs. Visit any Belmonte model home to see the flow of the floor plan, the quality of the fixtures, the integrity of the construction and the loving attention to detail. These are the building blocks that our success stands on today.

SECOND FLOOR



CONTACT

Spencer Lewis
spencer@belmontebuilders.com
518.512.9646

**concord
pools
& Spas**

LIFE IS BETTER
poolside

CONCORD
Lifestyle

Latham
156 Sparrowbush Road
(518) 783-8976
concordpools.com

Saratoga Springs
136 South Broadway
(518) 587-4949
@concordpools

2023 NESPA Gold Medal
Outstanding Achievement Award

**TEMPLATE. FABRICATE. INSTALL.
WE DO IT ALL!**

Custom Kitchen & Bath Countertops – We make it easy!

**GRANITE
& MARBLE WORKS, INC.**

**LARGEST SELECTION OF NATURAL STONE AND QUARTZ
IN THE CAPITAL DISTRICT**

www.graniteandmarbleworks.com
8 Commerce Park Drive, Wilton, NY 12831 • 518.584.2800

Your source for
**Lighting, Fans, and
Electrical Supplies**

For over 99 years, Wolberg Lighting Design and Electrical Supply has provided its homeowners and builders with unmatched quality, innovative designs and affordable prices.

- Prices to fit any budget
- Comprehensive website for selections
- In-store and on-site lighting design services

ASK ABOUT OUR **LIGHTING DESIGN SERVICE**

WOLBERG
Lighting Design & Electrical Supply

Albany 35 Industrial Park Rd 518-489-8451
Kingston 1221 Ulster Ave 845-802-5600
Saratoga 60 West Ave 518-886-0446
Schenectady 152 Erie Blvd 518-381-9231
(Electrical Supplies Only)
www.Wolberg.com

Celebrating Over **99** Incredible Years!
Since 1925

Realtors and homeowners agree.
**ANDERSEN® PRODUCTS INCREASE THE
VALUE OF A HOME BY AT LEAST 10%.***

Our commitment to consistently providing quality products has industry professionals and homeowners in agreement:

- Andersen products **Rate #1 in Quality and Performance****
- Andersen is the **#1 Preferred Window and Door Brand****
- Andersen is the **#1 Trusted and Recommended Window and Door Brand****

ANDERSEN
WINDOWS & DOORS
LOVE THE LIFE YOU SEE.™



VP innovations
kitchen | bath | lighting | home



Our showrooms have the depth to offer any new build or remodeling homeowner an "innovative" design experience.
innovationsbyvp.com
CLIFTON PARK | ALBANY | GLENS FALLS | PLATTSBURGH | SYRACUSE | ROCHESTER | BUFFALO | ERIE

Thank you to our Stone Sponsors













Hosted by the Capital Region Builders & Remodelers Association

SAVE THE DATE

June 7-8 & 14-15, 2025

TPL FLOORING

518.356.4315 | TPLflooring.com

Proudly featured in Parade home #3



Baker Contracting




PLUM & CRIMSON

fine interior design

51 Ash Street
Saratoga Springs, NY

518.369.6053

View our work at
plumandcrimson.com

— Full Service Interior Designer —

PaulaMcCormickInteriors.com
View Paula's work at Juniper Ridge by Abele Homes

Pella Windows & Doors by Crawford

Visit our showroom or call to schedule a free in-home consultation!

518-286-1900
529 3rd Avenue Extension
Rensselaer, NY 12144

The beauty of wood without the upkeep

TimberTech is a more sustainable choice than wood. Made with proprietary technology and a majority of recycled materials, our decking promises the beauty of wood without all the maintenance.

Order free samples at [TIMBERTECH.COM](https://www.timbertech.com)

FIND US AT

ABC Supply | Bellevue Builders Supply | Erie Materials
GNH Lumber | Lansing Building Products

GAF has the shingle you need no matter what your priorities are. Check out their wide range of roof colors, looks, and architectural shapes with options for any budget!

[GAF.com](https://www.gaf.com)

Beauty. Durability. Affordability. Color. Energy Efficiency.

Square footage: 2,606 | Bedrooms: 4 | Baths: 4



ABOUT THIS HOME

Located in Goose Hollow Ridge, a quiet neighborhood in Greenfield Center, on 1.55 acres this four bedroom, four bathroom is surrounded by trees and privacy. Offering quartz countertops in the custom kitchen, GE stainless steel appliances and a walk-in pantry. Enjoy engineered hardwood throughout the open concept main living areas, cozy carpet in the bedrooms and office. First floor primary suite with ceramic tiled shower and California Closet. Listen to the sounds of nature on the screen porch off the dining room.

ABOUT THE BUILDER

Founded locally by Saratoga Springs natives Jesse Boucher and Justin Sitler, Kodiak Construction has been providing residential and commercial construction services since 2004. Our clients range from residential and commercial to government entities throughout Saratoga, Lake George, and the Northern Capital District. Kodiak Construction plans and builds your home with beauty and structural integrity your family can be proud of for generations.

CONTACT

info@kodiakofsaratoga.com
518.587.4847

KODIAK CONSTRUCTION

kodiakofsaratoga.com

GOOSE HOLLOW RIDGE

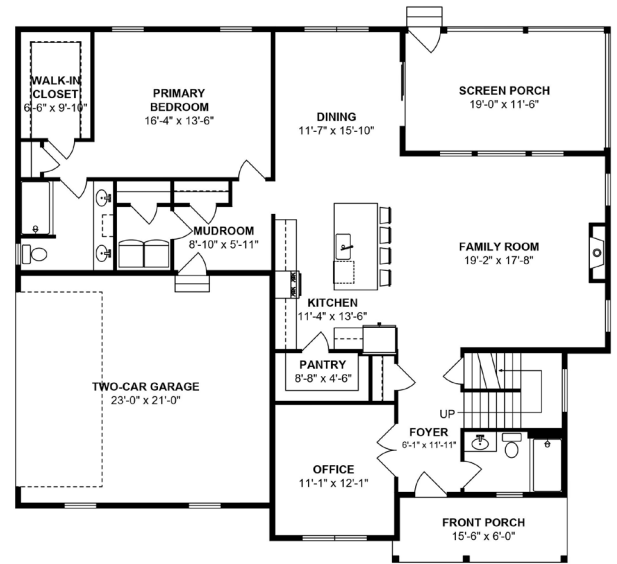
9 Crestwood Drive
Greenfield Center, NY 12833

DIRECTIONS

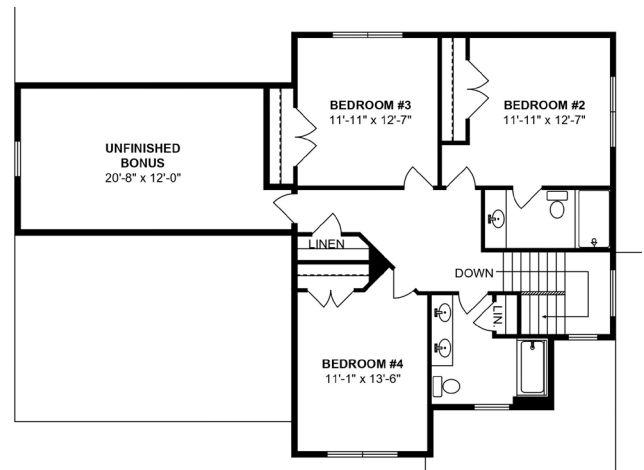
From I-87, take exit 15 and turn left onto Route 50. Turn right onto Church Street/Route 9 North, left onto Middle Grove Road, right onto South Greenfield Road, left onto Russell Road. Stay right on Russell Road, take a left onto Goose Hollow Road. Crestwood Drive is on the right - entrance to subdivision.



FIRST FLOOR



SECOND FLOOR





Serving the Capital Region for more than 50 years, providing a wide variety of hardwood, luxury vinyl and carpet for new homes and remodeling projects.



www.davidlouisfloorcovering.com
 info@davidlouis.com
 518.370.0243
 867 Albany Street, Schenectady, NY



YOUNG Landscapes, LLC
 YoungLandscaping.com

518.729.2406








Thermador ★



BOSCH

KITCHEN DREAMS START HERE

 **Marcella's APPLIANCE CENTER**

The Ultimate Appliance Experience


Schenectady
 Clifton Park at Shoppers World
 MarcellasAppliance.Com

SEAMLESS ELECTRICAL SERVICE SINCE 1981

COMALLI ELECTRIC

Electrical, energy & technology solutions for the Capital Region & Western Mass.

Visit comalli.com or call 518-218-1500 x206



*Generac certified

OWENS CORNING

THE PROOF IS IN THE PERFORMANCE

ULTIMATE PROTECTION

DURATION® SERIES SHINGLES with SureNail® Technology with Triple Layer Protection®



Duration® Series Shingles vs. top two competitors*

NAIL PULL-THROUGH RESISTANCE Up to	NAIL BLOW-THROUGH RESISTANCE Up to	DELAMINATION RESISTANCE Up to
2.5X BETTER	9X BETTER	2X BETTER

See the proof yourself. Visit us at NailingZonePerformance.com



* Owens Corning testing when following the manufacturer's installation instructions and nailed through the middle of the allowable nail zone.
 Owens Corning contractor survey, August 2019.
 SureNail® Technology is not a guarantee of performance in all weather conditions. SureNail® Technology is available only on Owens Corning® Duration® Series Shingles. For patient information, please visit www.owenscorning.com/patients. THE PINK PANTHER® is © 1964-2020 Metro-Goldwyn-Mayer Studios Inc. All Rights Reserved. © 2022 Owens Corning. All Rights Reserved.

Above and Beyond®

WE ARE PROUD TO SUPPORT THE PROGRAMS OF OUR COMMUNITIES.

 **ADIRONDACK TRUST COMPANY**  **AMSURE.**

BANKING / WEALTH MANAGEMENT / INSURANCE

AdirondackTrust.com Amsureins.com

INVESTMENT AND INSURANCE PRODUCTS ARE: NOT FDIC INSURED, NOT A DEPOSIT, NOT BANK GUARANTEED, NOT INSURED BY ANY FEDERAL OR STATE GOVERNMENT AGENCY, MAY GO DOWN IN VALUE.

© Adirondack Trust Company Member FDIC



FLOOR SOURCE

Known for our superior craftsmanship, exceptional architectural design & unsurpassed customer satisfaction

atwhomes.com *Lots available in Glenville!*

BDB PAVING & GENERAL CONTRACTING, INC
 Owner operated serving the Capital District

**Driveways
 Stamped Asphalt
 Asphalt Sealing
 Parking Lots
 Roads
 Concrete**

Fully insured • References
 Free estimates

518.490.2190 BDBPaving.com

BEST TILE® **10% OFF**
 ANY PURCHASE OF \$500 OR MORE WITH THIS COUPON

2241 Central Ave. / Schenectady, NY (518) 344-7700
 4295 Route 50 / Saratoga Springs, NY (518) 584-5941

BESTTILE.COM *Not valid with any other offers, discounts, clearance items, prior orders or sales. Not valid on countertop purchases. Expires 9/30/2024

BRIZO

84 LUMBER
 YOUR HOMETOWN BUILDING PARTNER

2403 ROUTE 9 • BALLSTON SPA, NY
 518-899-5684
84LUMBER.COM



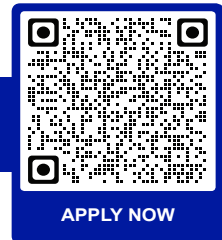
TrustcoBank.com

Your dream home is in reach.

Trustco Bank welcomes you to the neighborhood with the best in new construction loans.

- ✘ FREE 300-day interest rate lock - most competitors offer far less!
- ✘ Low closing costs!
- ✘ No lender paid PMI* required - save hundreds of dollars a year!
- ✘ Financing up to 97% of appraised value!
- ✘ No appraisal fee, no points, no prepayment penalty!

Lock in your rate for the spring market with a free conditional pre-approval.**



APPLY NOW

For more information visit **TrustcoBank.com** or call any branch location!

*PMI—Private Mortgage Insurance. Lender paid Private Mortgage Insurance on loans over 89.5% Loan-to-Value. Features listed are available on Trustco Banks New Construction Loan. Conditional pre-approval valid for 90-days with a 60-day rate lock and is based upon the absence of any material adverse change in your circumstances prior to closing, all as determined in our sole discretion, upon your satisfactory completion of the requirements by the bank. Your actual rate, payment, and costs could be higher. Get an official Loan Estimate before choosing a loan. Please note: We reserve the right to alter or withdraw these products or certain features thereof without prior notification. NMLS #474376



TRUSTCO BANK[®]

Your Home Town Bank

Member
FDIC

