



TOPCON N-TYPE M10

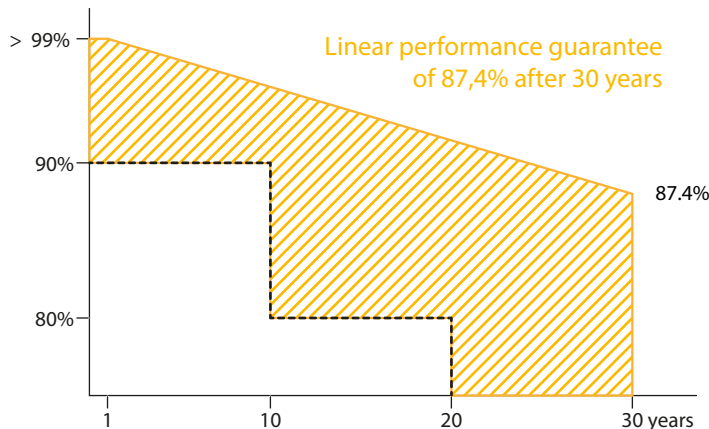
BAUER SOLARTECHNIK PREMIUM PROTECT BS-132M10NHBB-GG 515 - 525 W

BIFACIAL GLASS-GLASS HALF-CELL MODULE

engineered & designed in
GERMANY



BAUER guarantees a minimum performance value of 87,4% after 30 years for the PREMIUM PROTECT glass-glass solar modules.



FIRE CLASS A

Maximum fire protection through double glazing according to the highest security requirements



CERTIFICATION

Constant in-house quality controls - certified several times over by accredited inspection bodies



GRADE "A" N-TYPE BIFACIAL HALF-CELLS

Up to 30% increase in yield through bifacial cells active on both sides and a transparent backside. Only GRADE "A" half-cells are used in the production of all BAUER solar modules and only the blackest are selected.



GERMAN GUARANTOR

If necessary, it is guaranteed that a German company takes over any claim settlements



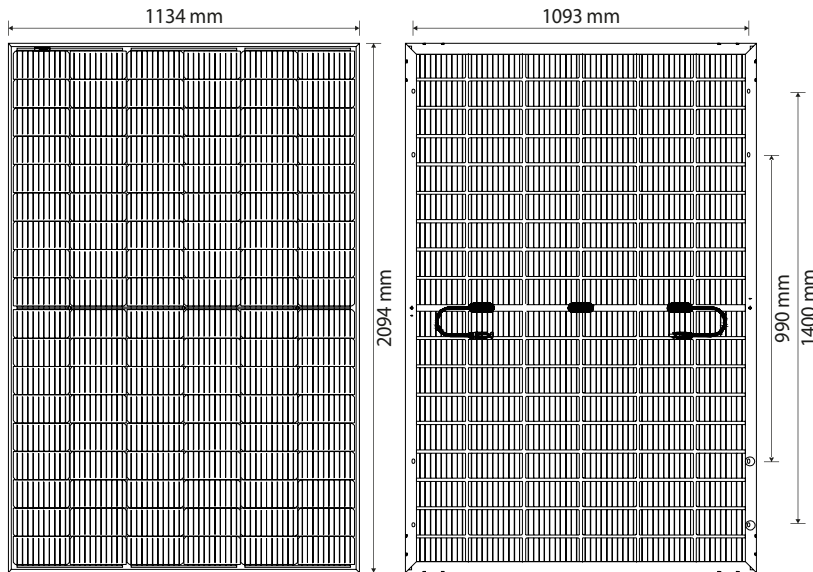
WARRANTY & GUARANTEE

30 year warranty and a linear performance guarantee over a period of 30 years



REINSURANCE COVERAGE

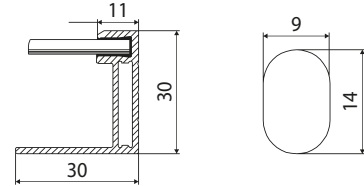
BAUER is re-insured with Munich RE for 15 years of the product warranty & 30 years of the performance guarantee



BAUER SOLARTECHNIK

PREMIUM PROTECT

BS-132M10NHBB-GG 515 - 525 W



WARRANTIES¹

- 30 years product warranty
- 30 years performance guarantee

PHYSICAL SPECIFICATIONS

Module dimensions	2094 x 1134 x 30 mm
Weight	29,2 kg
Frame	Black anodized aluminium profile
Frontside	AR-coating Semi-toughened glass, 2 mm
Embedding material	EVA
Backside	Black-glazed & Semi-toughened glass, 2 mm
Solar cells	132 monocrystalline N-type bifacial half-cells
Bifaciality	80 % ± 10 %
Junction box(es)	IP68, 3 bypass diodes
Cable & connector	1x4 mm ² , 500 mm, MC4 compatible

OPERATING CONDITIONS

Operating temperature	-40 to 85°C
Static load	5400 Pa (snow/wind)
Hail	Ø 25 mm at 23 m/s

CERTIFICATION

CSA, IEC 61215, IEC 61730, fire class A IEC 61730-2 (UL790)

PACKAGING

Modules per pallet	36
Pallets/Modules per container	22/792

ELECTRICAL CHARACTERISTICS²

		BS-515-132M10NHBB-GG	BS-520-132M10NHBB-GG	BS-525-132M10NHBB-GG
Maximum power	P _{max} (W)	515	520	525
Power output tolerance	P _{max} (%)	0 ~ +3	0 ~ +3	0 ~ +3
Open circuit voltage	V _{oc} (V)	46,63	46,8	46,96
Short circuit current	I _{sc} (A)	14,08	14,17	14,25
Voltage at maximum power	V _{mpp} (V)	38,62	38,78	38,93
Current at maximum power	I _{mpp} (A)	13,34	13,42	13,49
Module efficiency	η _m (%)	21,69	21,90	22,11
Bifaciality performance increase*	10 % P _{mpp} (W)	566,5 (+51,5)	572 (+52)	577,5 (+52,5)
	20 % P _{mpp} (W)	618 (+103)	624 (+104)	630 (+105)
	30 % P _{mpp} (W)	669,5 (+154,5)	676 (+156)	682,5 (+157,5)
Nominal operating cell temperature	NOCT (°C)	45 +/- 2		
Temperature coefficient of V _{oc}	T _k (V _{oc})	-0,26 %/°C		
Temperature coefficient of I _{sc}	T _k (I _{sc})	+0,046 %/°C		
Temperature coefficient of P _{mpp}	T _k (P _{mpp})	-0,30 %/°C		
Maximum system voltage DC (TÜV)	(V)	1500		
Maximum series fuse rating	(A)	30		

*depending on Albedo and irradiation conditions at installation site

¹Nominal value is specified in the written warranty conditions. A possible light-induced degradation in performance is not taken into account.

²Values under Standard Test Conditions (STC): air pressure 1.5 AM, irradiance 1000 W/m², cell temperature 25°C. STC measuring tolerance: ±3 % (P_{max}), ±10 % (V_{max}, I_{mpp}, V_{OC}, I_{SC}). The beneficiary under the reinsurance policy is solely Bauer Solar GmbH. Please contact us to get information on how this insurance coverage benefits you as a customer.

Note: please read the safety instructions and installation manual before using this product.

Subject to change. © 2023 Bauer Solar GmbH. Effective: 04/04/23.