

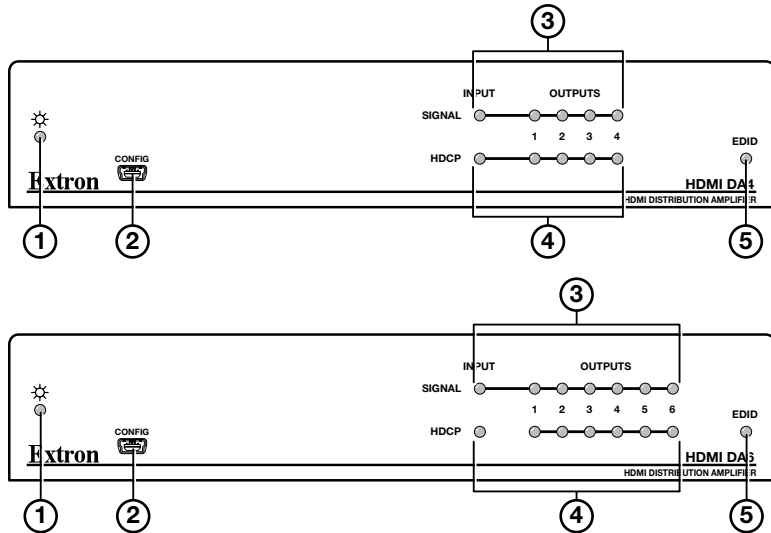
# HDMI DA4 and HDMI DA6 • Setup Guide

**IMPORTANT:**  
Refer to [www.extron.com](http://www.extron.com) for the complete user guide and installation instructions before connecting the product to the power source.

## Overview

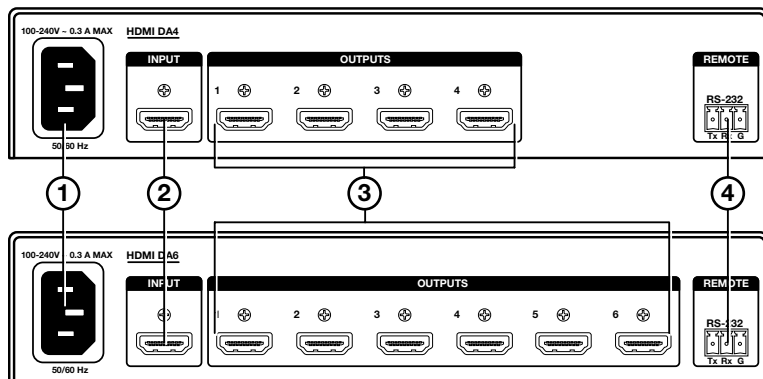
These Extron distribution amplifiers distribute one HDMI input signal to four (HDMI DA4) or six (HDMI DA6) simultaneous outputs. This setup guide provides basic instructions for installation by an experienced installer. For complete instructions, see the *HDMI DA4 and HDMI DA6 User Guide*, on the Extron web site ([www.extron.com](http://www.extron.com)).

## Front Panel



- ① **Power status LED** – Lights green when power is applied to the unit.
- ② **USB Config port** – Used for SIS configuration, monitoring, and firmware updates.
- ③ **Signal LEDs** – Light green when a TMDS signal is detected on the HDMI input and is being transmitted on the corresponding output.
- ④ **HDCP LEDs** – Light green when a HDCP has been authenticated on the HDMI input and the appropriate output (if required).
- ⑤ **EDID LED** – Lights green when the EDID from the selected output device (output 1 by default) is successfully stored. Lights amber if factory-installed EDID is used or if the EDID was not successfully stored.

## Rear Panel

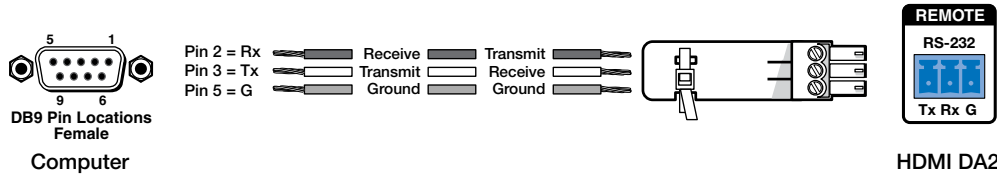


- ① **Power input** – Connect the provided IEC connector to a 100-240 VAC (50 or 60 Hz) power source..
- ② **HDMI input** – Connect a source device into this female HDMI type A connector.
- ③ **HDMI outputs** – Connect display devices into these female HDMI type A connectors.
- ④ **RS-232** – Used for SIS configuration, monitoring, and firmware updates.

# HDMI DA4 and HDMI DA6 • Setup Guide (Continued)

## Installation

1. Mount the HDMI DA in a suitable location (see the “Mounting” section of the *HDMI DA4 and HDMI DA6 User Guide* for mounting options). Follow the instructions provided with the mounting kit.
2. (Optional) Connect the USB or RS-232 connector (see the figure below) to a PC for configuration and maintenance. Use SIS commands to configure EDID Minder®, mute the video signal, mute the audio signal, adjust the video color bit depth, or monitor the signal and HDCP status, as required. See the “SIS Commands” section of the *HDMI DA4 and HDMI DA6 User Guide*.

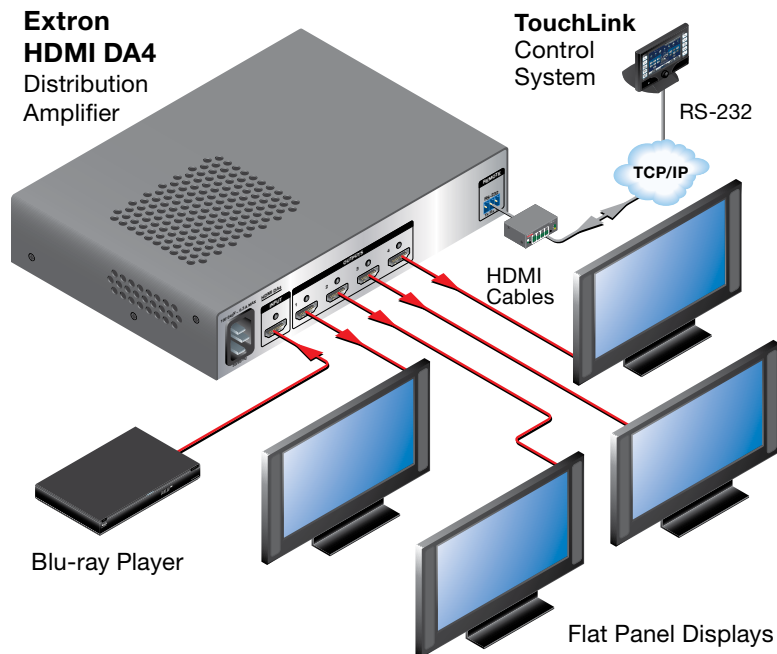


3. Connect and power on the display devices to the rear panel HDMI outputs. Connect the primary display to output 1. EDID from output 1 is stored automatically, by default.

**NOTE:** Use the LockIt™ HDMI cable lacing brackets provided to secure the HDMI connectors (see the *LockIt HDMI Cable Lacing Bracket Installation Guide*).

4. Connect to a 110-240 VAC (50 or 60 Hz) power supply using the provided IEC power cord.
5. Connect and power on the source device.

## Typical Application (showing HDMI DA4)



|  |  |  |   |   |   |   |  |
|--|--|--|---|---|---|---|--|
| <b>Extron Headquarters</b><br>+1.800.633.9876 (Inside USA/Canada Only)<br>Extron USA - West      Extron USA - East<br>+1.714.491.1500      +1.919.850.1000<br>+1.714.491.1517 FAX      +1.919.850.1001 FAX | <b>Extron Europe</b><br>+800.3987.6673<br>(Inside Europe Only)<br>+31.33.453.4040<br>+31.33.453.4050 FAX | <b>Extron Asia</b><br>+65.6383.4400<br>+65.6383.4664 FAX | <b>Extron Japan</b><br>+81.3.3511.7655<br>+81.3.3511.7656 FAX | <b>Extron China</b><br>+86.21.3760.1568<br>+86.21.3760.1566 FAX | <b>Extron Middle East</b><br>+971.4.299.1800<br>+971.4.299.1880 FAX | <b>Extron Korea</b><br>+82.2.3444.1571<br>+82.2.3444.1575 FAX | <b>Extron India</b><br>1800.3070.3777<br>(Inside India Only)<br>+91.80.3055.3777<br>+91.80.3055.3737 FAX |
|--|--|--|---|---|---|---|--|