

UDX

Quick Start Guide



Download Product Manual

Product manuals and documentation are available online at www.barco.com/td/R9008600
Registration may be required; follow the instructions given on the website.

IMPORTANT!

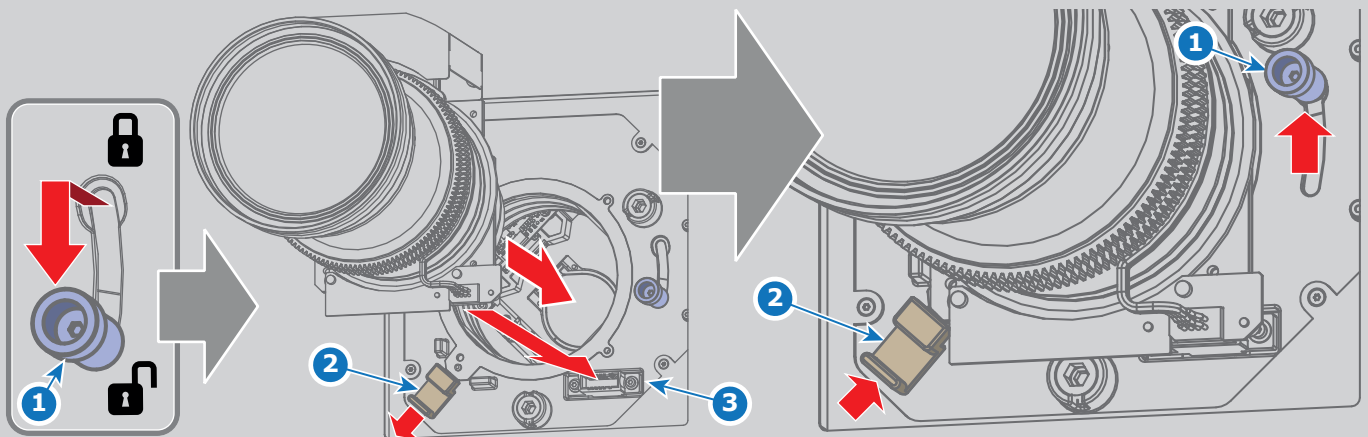
Read Installation Instructions before connecting equipment to the mains power supply.



Install Lens

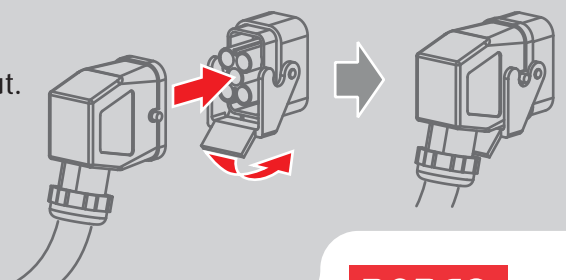
!! ONLY USE TLD+ Zoom Lenses !!

1. Place the primary lens lock in "unlock" position. Handle (ref. 1) towards electrical socket (ref. 3).
2. If present remove the plastic protection cover from the lens holder opening.
3. Check if the secondary lens lock stands in the "unlock" position (ref. 2).
3. Gently insert the lens. Ensure the lens connector matches the electrical socket on the lens holder.
4. Insert the lens until the connector seats into the socket.
 - The secondary lens lock (ref. 2) makes an audible clicking sound when latching.
 - Do not release the lens yet, keep pushing the lens against the front plate!
5. Secure the lens in the lens holder by sliding the primary lens lock handle into the "locked" position.
6. Check if the lens touches the front plate of the Lens Holder.
7. Check if the lens is really secured by trying to pull the lens out of the lens holder.



Connect power

Ensure that the power is properly connected to the power input.
(120-160V* / 200-240V [+/-10%, * reduced light output])



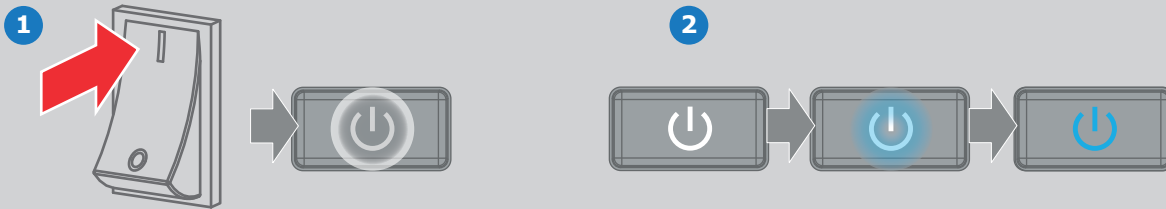
Startup

1. Power on. Turn the mains switch to on (I).

- Start up sequence starts. Backlight of the Power on/off button flashes WHITE.
- When start up sequence is finalized the Power on/off button lit WHITE.

2. Press the Power on/off button.

- The backlight of the Power on/off button changes from WHITE to BLUE.
- Local LCD displays a start up screen.

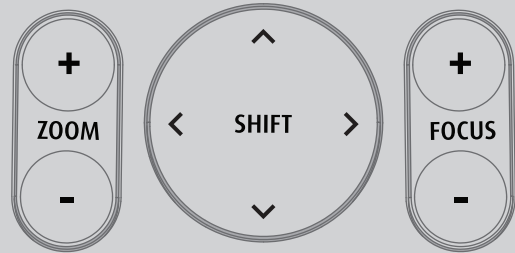
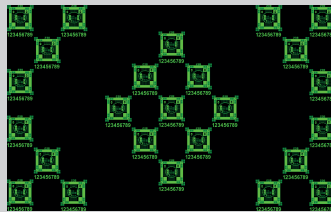


Adjust

1. Adjust the lens settings by pressing the LENS button or via the direct lens keys on the RCU.

Select the "Greenfocus" test pattern to adjust the lens.

TIP: Press star button (*)
to activate test pattern



2. Orientation of the unit is set as standard in table front projection mode.

Change the projector set up in the ALIGNMENT > ORIENTATION menu.

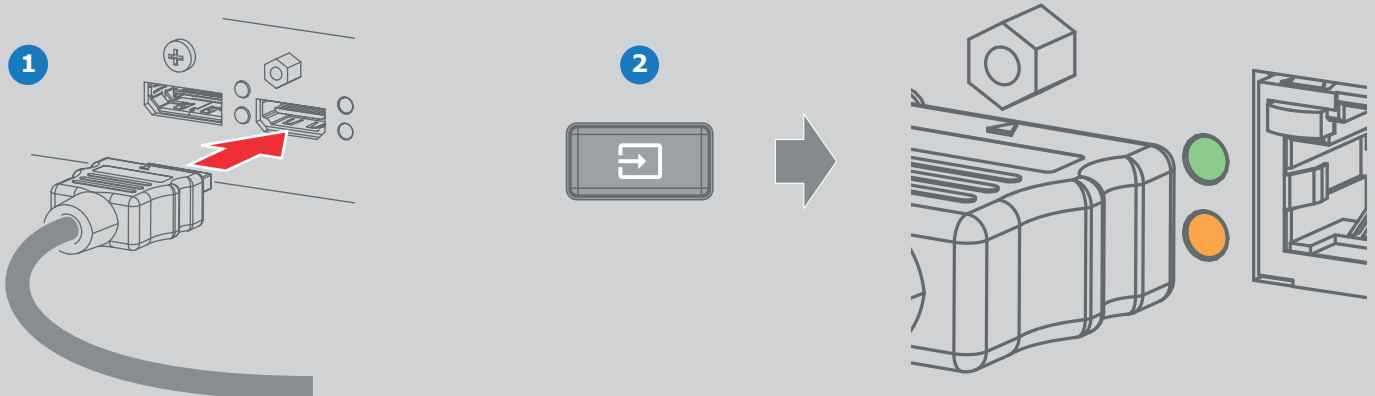
3. For Advanced adjustments like Warping, Light management, etc. see User Guide of the projector.

Connect and Select source

1. Connect available sources to the appropriate input ports.

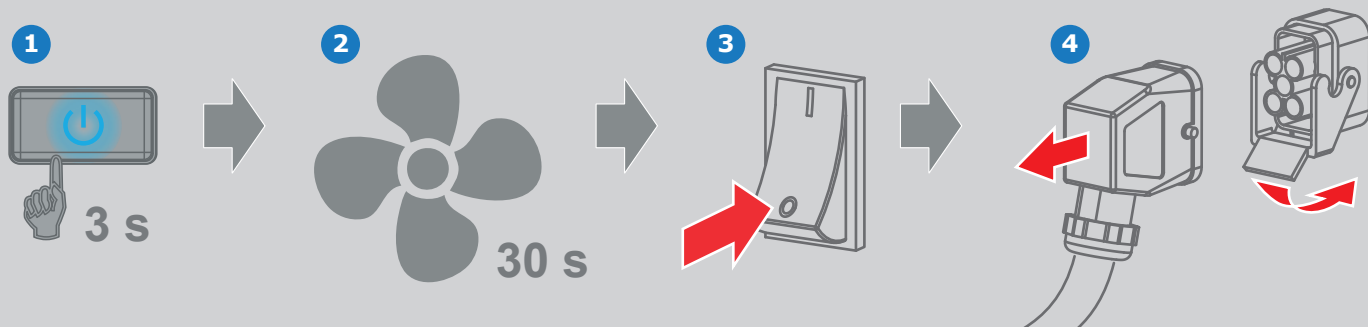
2. Select connected source: Image of selected input appears.

- The LED of the selected source lit up GREEN.
- The yellow LED indicates if sync/signal is present.



Switch off

1. Press the **Power on/off button** for three seconds.
2. Wait until the **after-cooling cycle is finished** (approximately 30 sec.)
3. Turn the **mains switch to off** ('0').
4. **Unplug the power cord** from the projector.



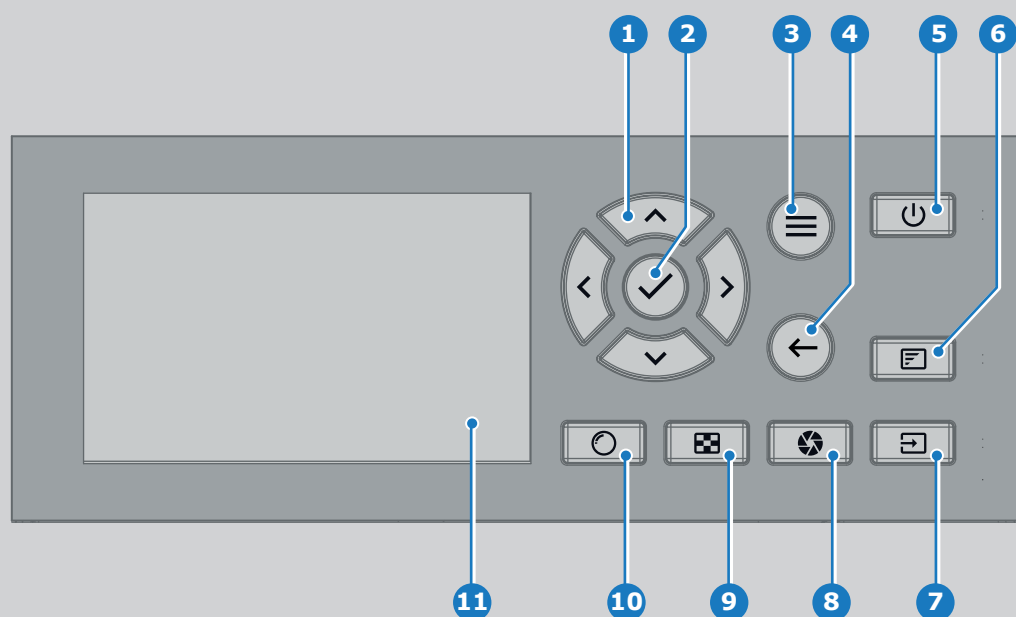
Precautions



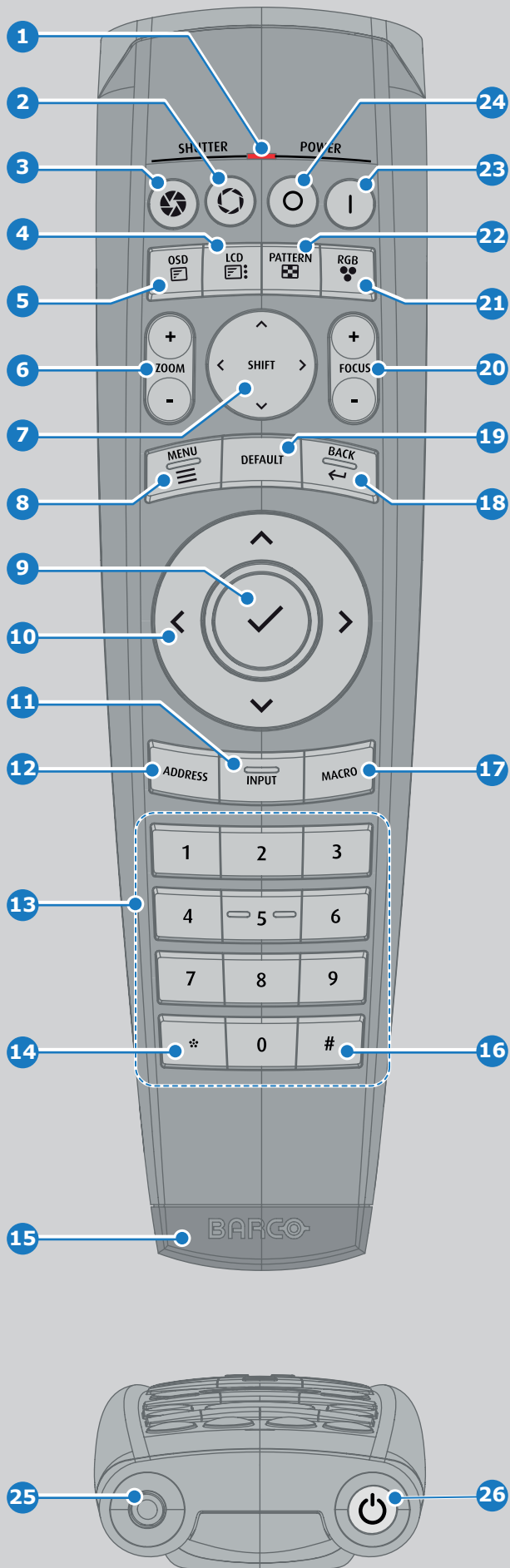
- Remove the lens before transporting the projector.
- First switch the projector to Standby mode and wait until After Cooling is finished to switch off the main power.
- Ensure the projector is operating with clean filters.
- Do not block the ventilation in and outlets.
- External laser light can cause severe damage to the DMD. This damage is not covered by warranty.

Local Keypad

- 1 Menu Navigation.
- 2 Menu Selection.
- 3 Open Menu.
- 4 Menu Back.
- 5 Power On/Off.
- 6 OSD On/Off.
- 7 Input Selection.
- 8 Shutter Open/Close.
- 9 Test Patterns.
- 10 Lens Menu.
- 11 Touch Panel.

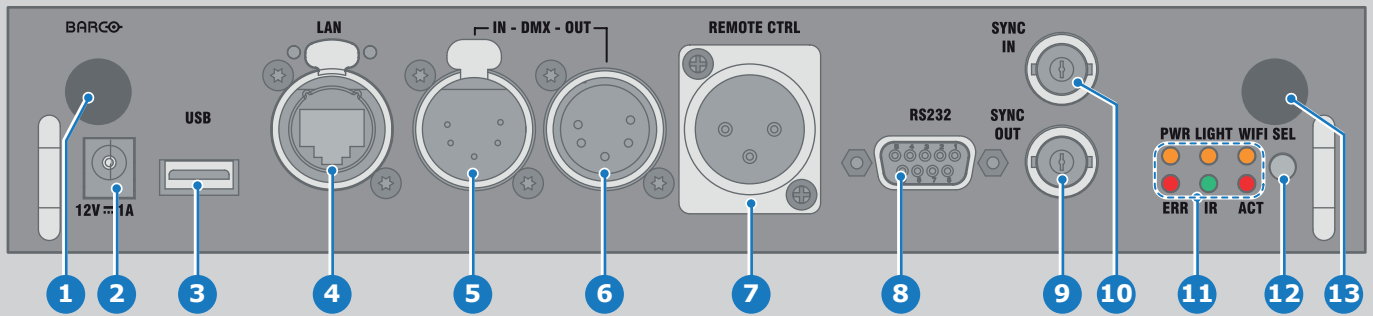


RCU buttons



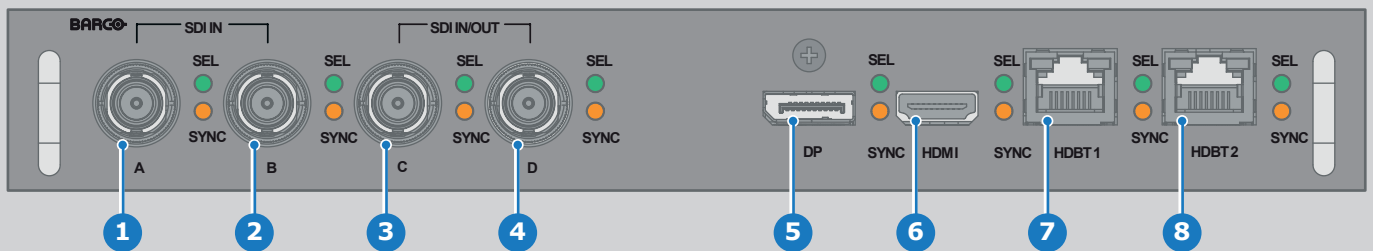
- 1 Button pressed indicator.
- 2 Shutter Open.
- 3 Shutter Close.
- 4 Touch Panel On/Off.
- 5 LCD On/Off.
- 6 Lens Zoom.
- 7 Lens Shift.
- 8 Menu Activation.
- 9 Menu Selection.
- 10 Menu Navigation.
- 11 Input Selection.
- 12 Address button.
- 13 Numeric buttons.
- 14 Test pattern Lens Menu
- 15 XLR connector.
- 16 TBD.
- 17 Macro button.
- 18 Menu Back.
- 19 Default button.
- 20 Lens Focus.
- 21 Color On/Off.
- 22 Test Patterns.
- 23 Power On.
- 24 Power Off.
- 25 Stereo Jack.
- 26 RCU On/Off.

Communication Panel



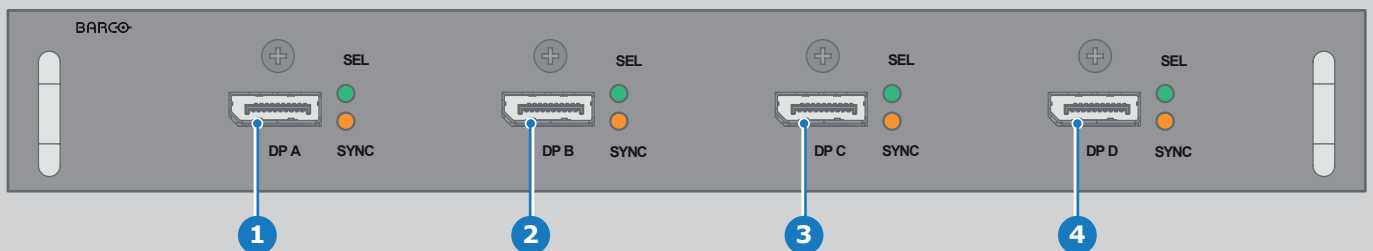
- | | |
|--|---|
| <ul style="list-style-type: none"> 1 WiFi antenna for wireless IP (optional) 2 12V 1A output 3 Firmware update/USB backup custom settings 4 10/100 base-T for external control over IP and Art-Net 5 DMX interface input 6 DMX interface output 7 XLR input for wired projector control | <ul style="list-style-type: none"> 8 RS232 for serial communication 9 Sync Out 3D 10 Sync In 3D 11 Status lights 12 IR receive sensor 13 GSM antenna input (optional) |
|--|---|

Venues & Hospitality Input (V&H)





- | | |
|--|---|
| <ul style="list-style-type: none"> 1 Quad 3G SDI channel A Input 2 Quad 3G SDI channel B Input 3 Quad 3G SDI channel C Input/Output 4 Quad 3G SDI channel D Input/Output | <ul style="list-style-type: none"> 5 DisplayPort Input 6 HDMI Input 7 HDBaseT Input 1 8 HDBaseT Input 2 |
|--|---|

Virtual & Augmented Reality Input (V&AR) (Optional)

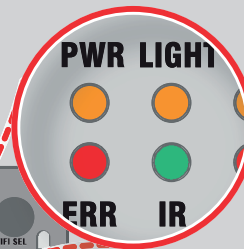
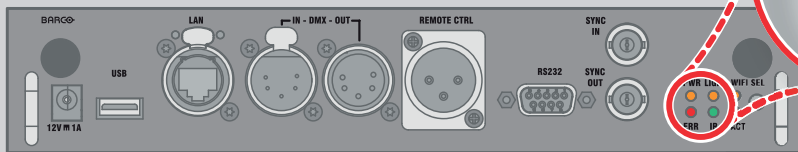


- | | |
|--|--|
| <ul style="list-style-type: none"> 1 Quad DisplayPort channel A Input 2 Quad DisplayPort channel B Input | <ul style="list-style-type: none"> 3 Quad DisplayPort channel C Input 4 Quad DisplayPort channel D Input |
|--|--|

Button Backlight Status

Button	Color status	Description
Power button 	Blinking WHITE	Projector starts up (Booting)
	Solid WHITE	Projector is in Standby
	Blinking RED	Error condition
	Blinking BLUE	Projector goes to ON mode
	Solid BLUE	Projector is ON
Shutter button 	Off	Projector not in power ON state
	Solid WHITE	Shutter is open
	Solid RED	Shutter is closed

LED Status



LED	Color status	Description
PWR (power LED)	Off	Projector powers up
	RED	Projector is in Standby
	ORANGE	Projector is Ready
	GREEN	Projector is on
LIGHT (Illumination LED)	Off	Lamp is off
	RED	No lamp inserted
	ORANGE	Lamp is on in ECO mode
	GREEN	Lamp is on in normal mode
	GREEN-ORANGE	Lamp is on in CLO mode
ERR (error LED)	Off	No error
	RED toggles on/off	Error
	ORANGE toggles on/off	Warning
IR	RED	IR signal received
	GREEN	IR signal acknowledged

Support

Website www.barco.com/esupport

Tel.: - USA +1 866 374 7878
 - EMEA +32 56 36 8019
 - APAC +86 400 88 22726