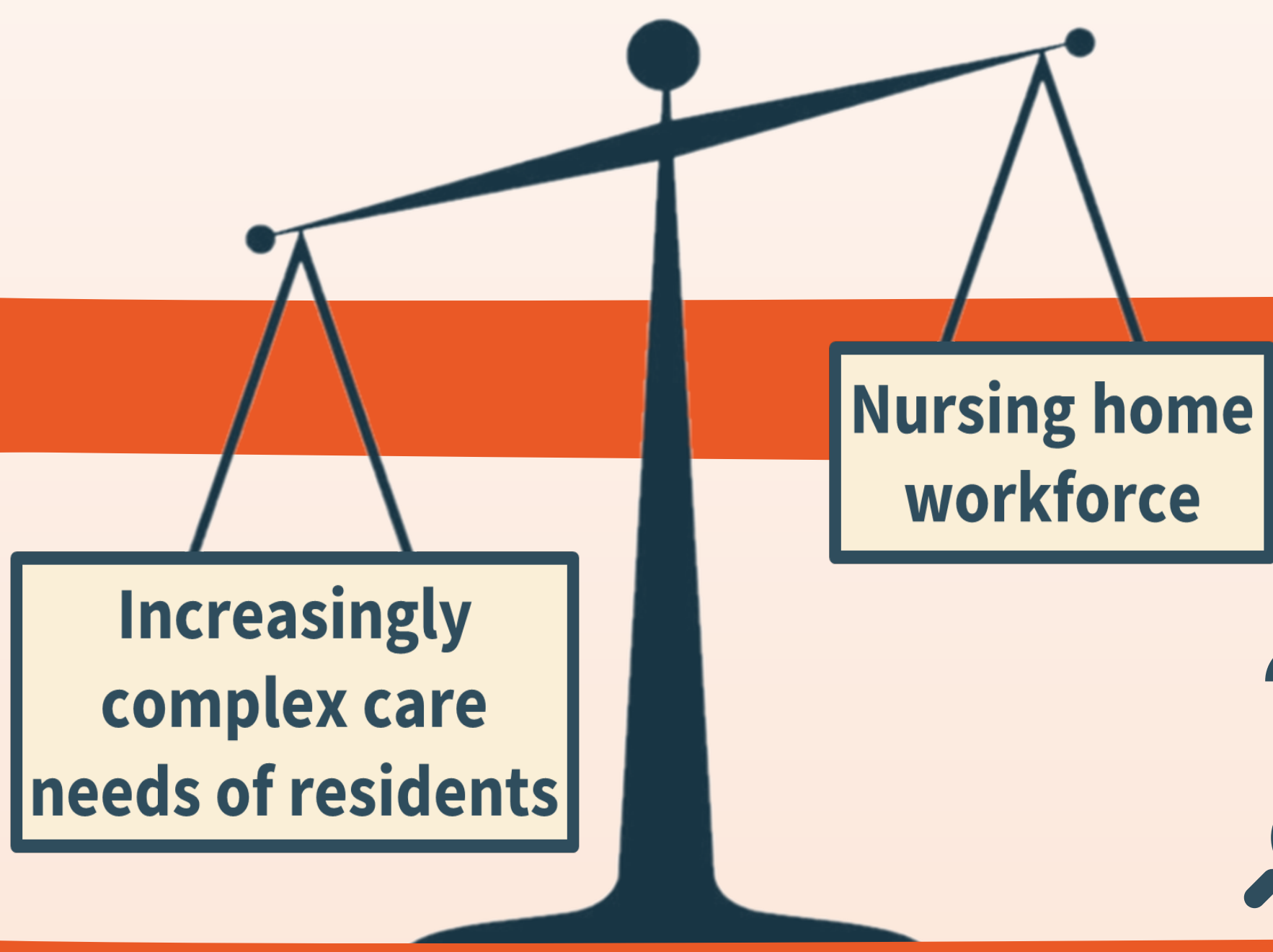


How prevalent is rationing of care in Flemish nursing homes?

Results from the Flanders Nursing Home (FLANH) project

Lisa Geyskens, Anja Declercq, Koen Milisen, Mieke Deschodt & the FLANH consortium

Introduction



Imbalance leads to rationing of care and threatens quality of care

- ? Rationing of care is the withholding of necessary care due to insufficient time, staffing or skill mix
- 🔍 Evidence on rationing of care in nursing homes is still limited

Aim

To describe rationing of care among care workers in nursing homes in Flanders, Belgium

Methods

Design

Descriptive sub-study of the cross-sectional survey phase (2023) of the FLANH project

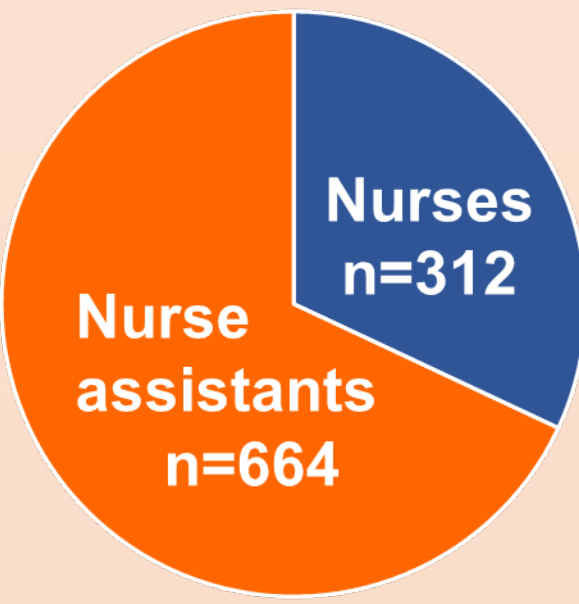
FLANH project¹

Multicenter longitudinal study based on survey and registry data collection in 2023 & 2025
Aims to examine the relationships between staffing, work environment, rationing of care, and resident and care worker outcomes

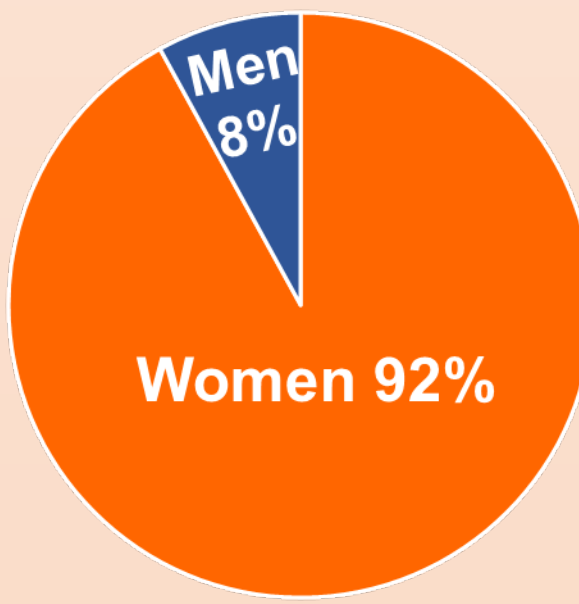
¹ Geyskens et al. PLOS ONE (2023)



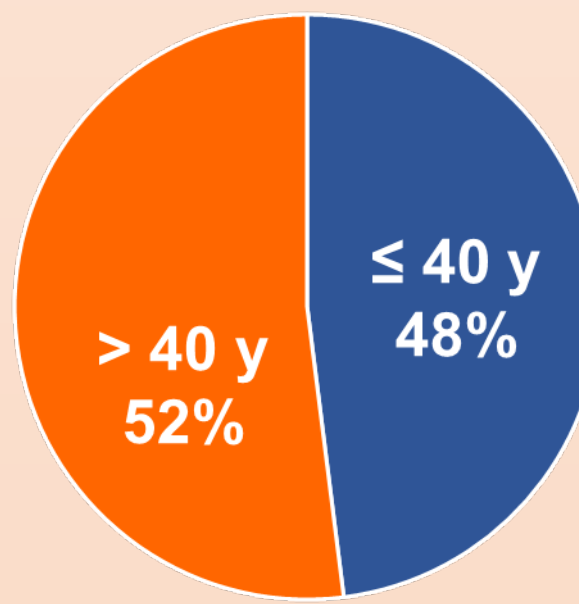
Setting and sample



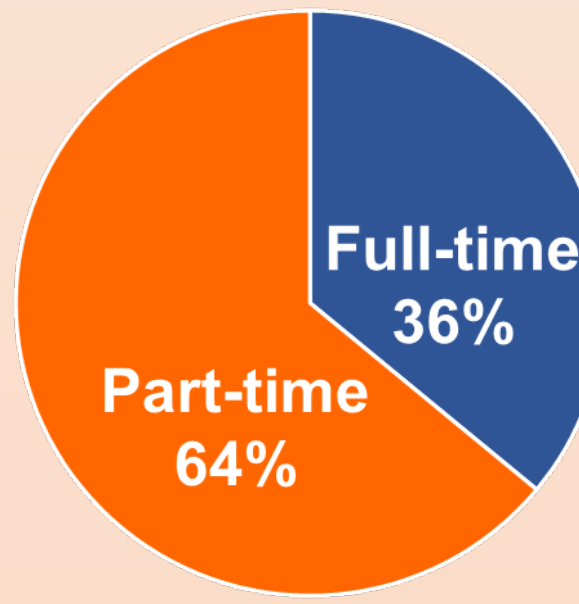
Nurse profile



Gender



Age



Employment

Measurement

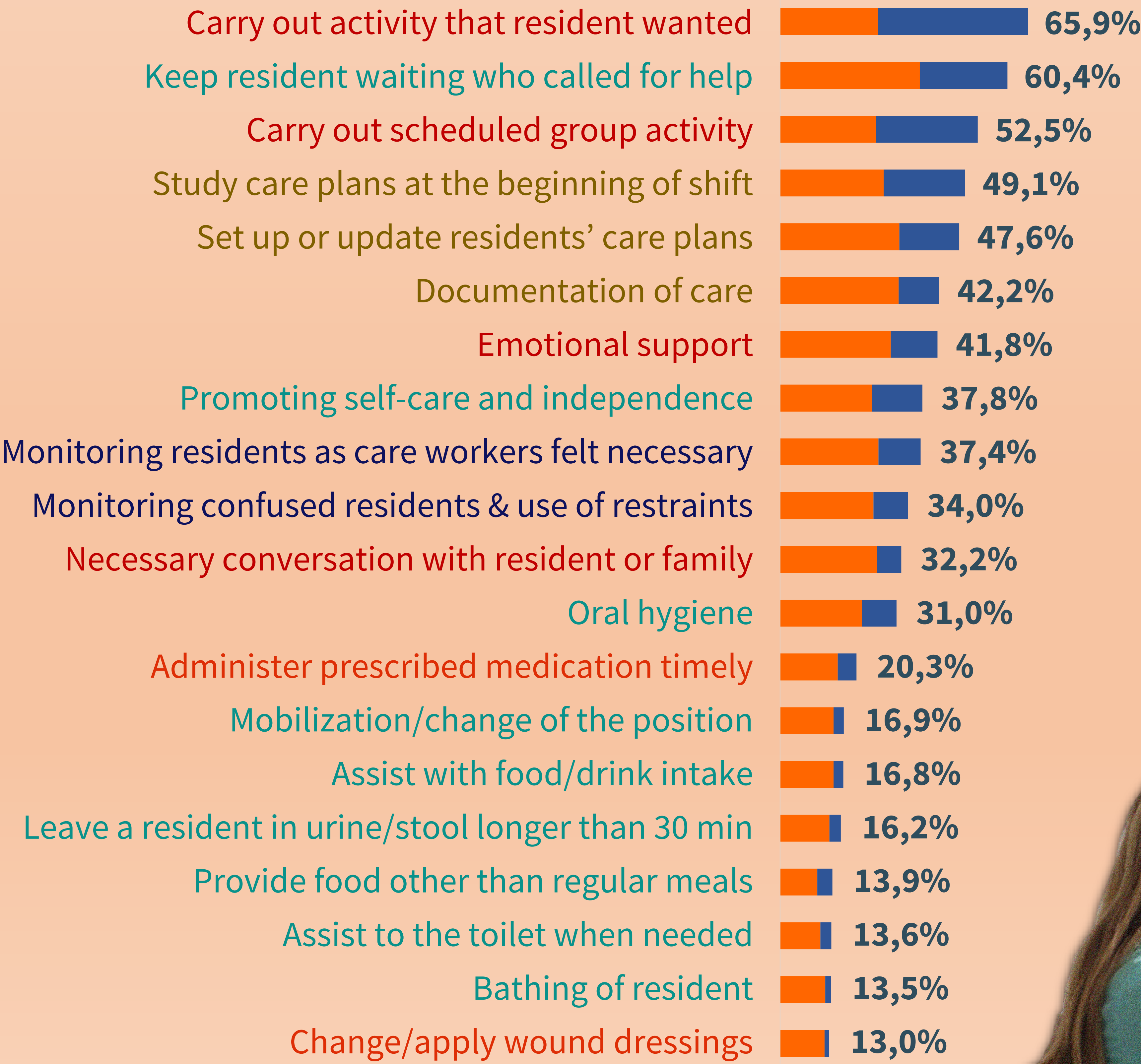
The Basel Extent of Rationing of Nursing Care for Nursing Homes (BERNCA-NH)²
Question: How often in the last seven working days were you unable to carry out the care activity due to lack of time or high workload?

Answer options: “never”, “seldom”, “sometimes” or “often”

² Zúñiga et al. J Adv Nurs (2016)

Results

Percentage of care workers who reported rationing care **sometimes/often**



Conclusion

Psychosocial activities, documentation and monitoring were rationed the most

Basic care activities and clinical care were rationed the least

Results were similar for nurses vs nurse assistants; except setting up care plans, documentation of care, and promoting self-care were rationed more by nurses than nurse assistants

The next step of FLANH will be to look at the longitudinal data and examine the relationships between rationing of care and outcomes among residents and care workers

