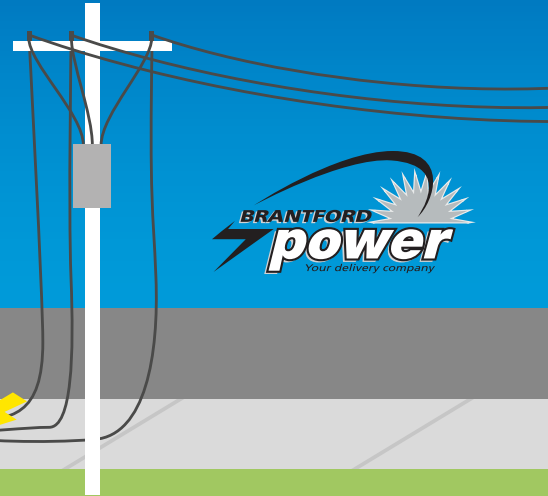


KEEP AWAY FROM DOWNED POWERLINES!

- **STAY BACK** THE LENGTH OF A SCHOOL BUS
- **CALL 911** AND BRANTFORD POWER AT **519-751-3522**



← 10 metres or 33 feet →



Winter time-of-use hours in effect

Electricity prices for November 1, 2019

OFF-PEAK

10.1¢/kilowatt hour (kWh)

MID-PEAK

14.4¢/kWh

ON-PEAK

20.8¢/kWh

These are the prices that appear on the electricity line of your bill and are only for the electricity you use. They do not include other charges like delivery.

Households that aren't on time-of-use pricing will pay 11.9¢/kWh for the first 1,000 kWh of electricity they use per month; 13.9¢ for each additional kWh. Small businesses on tiered pricing will pay 11.9¢/kWh for the first 750 kWh of electricity they use per month; 13.9¢ for each additional kWh.

If you signed a contract with an electricity retailer, you pay the price agreed upon in the contract, not the price set by the OEB.

NEW:

Ontario has introduced new bill relief. The Ontario Electricity Rebate will reduce your bills effective November 1.

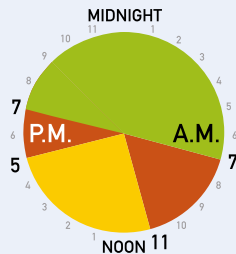
Learn more at OEB.ca

1-877-632-2727 (Toll-free within Ontario)

TTY: 1-844-621-9977 (Toll-free within Ontario)

Winter time-of-use hours in effect November 1

WEEKDAYS



Off-peak

Mid-peak

On-peak

WEEKENDS & HOLIDAYS

