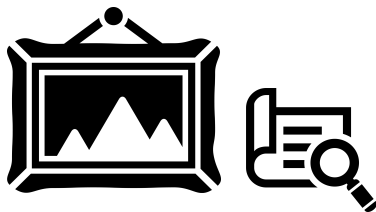


# “Your Personal Guide”

## Connects you with Museums

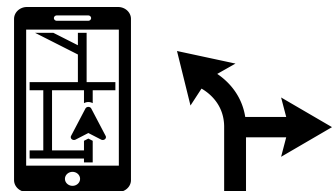
### Translation

Available in 24 languages  
3 difficulty levels



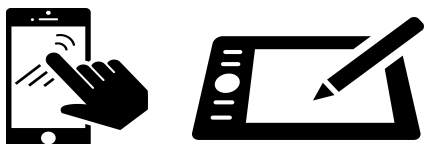
### Personalization

Auto-generated  
museum tour routes



### Devices

Compatible with  
iOS, Android



### Low Cost

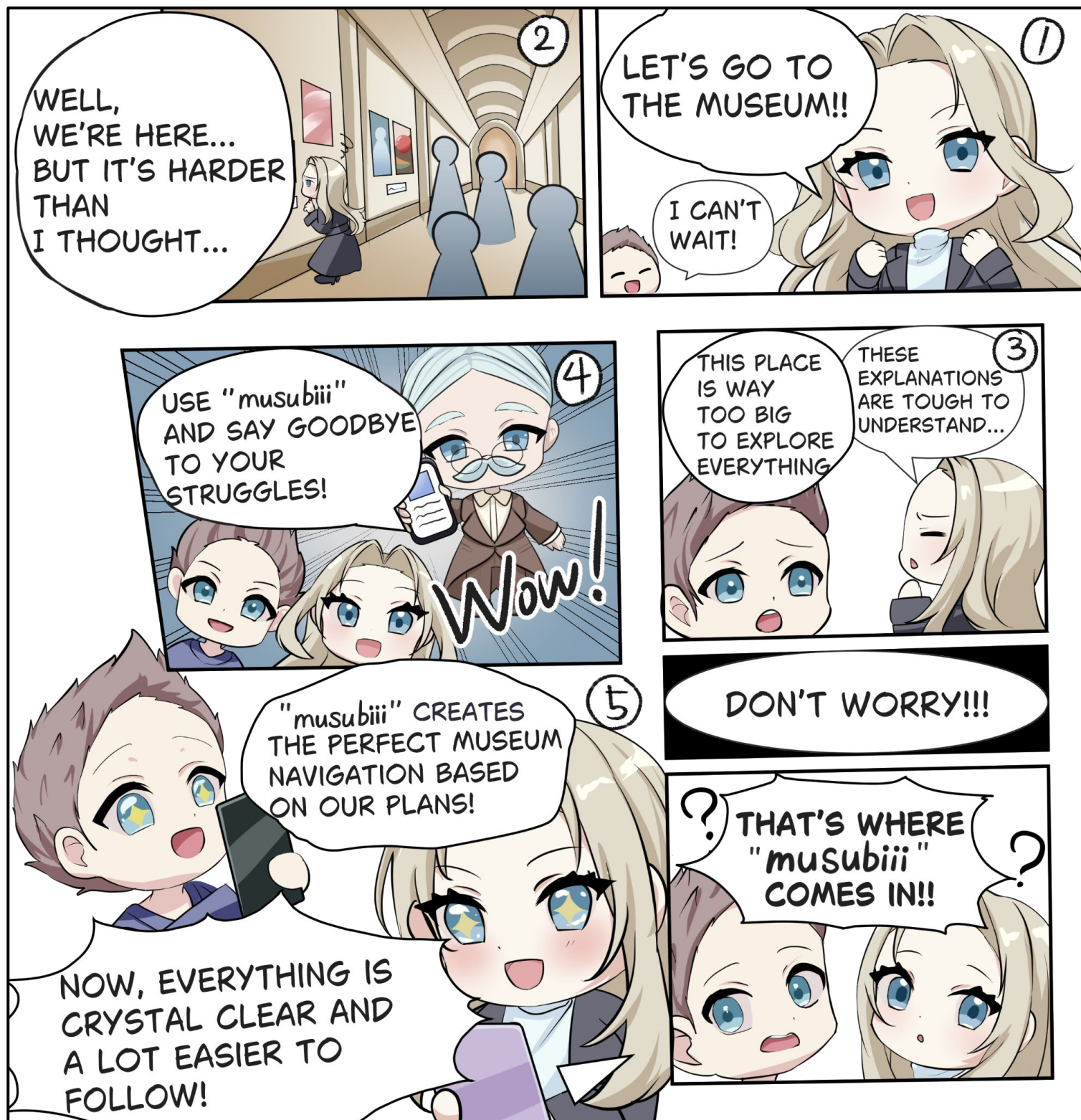
From \$5 per user



“musubiii” is an app that enhances museum  
and art gallery experiences using generative AI.

Scheduled to launch in July 2025.

## When you use “musubiii”...

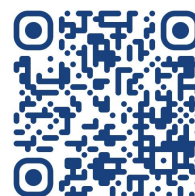


## Contact Information

NI+C is a joint venture between NTT and IBM



St. Luke's Garden Tower 15F  
8-1 Akashi-cho, Chuo-ku, Tokyo, 104-0044, Japan  
TEL : +81-3-6278-1111



MAIL : CES2025@niand.co.jp

As of Jan. 2025