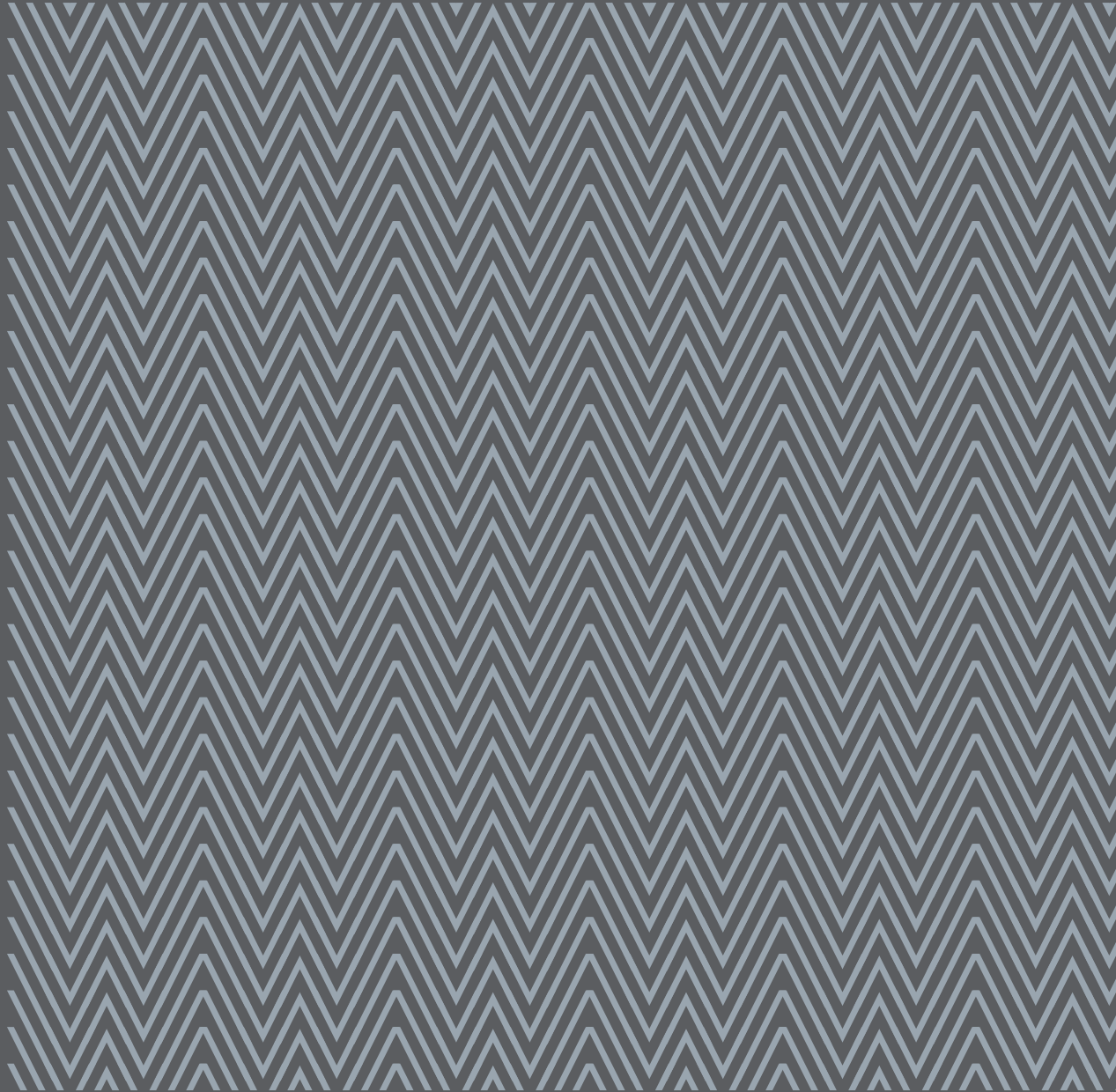


PRINTING INFORMATION

gmund
colors | FELT



PRINTING INFORMATION – GMUND COLORS FELT

Printing

- Offset printing
- Letterpress
- Silk-screen printing
- Blind embossing
- Hot foil stamping
- Paper etching
- Die cutting
- Engraving

Recommendations for offset printing

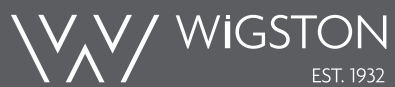
- Screens up to 80 l/cm
- Match litho to the paper colour
- Proof printing on same paper stock
- Under colour reduction when applying strong ink coverage

Low absorption of ink, therefore:

- Use of fully oxidative drying inks
- Print dusting, low printing stacks
- Careful drying, minimum of 24 hours
- Increase pressure and use soft rubber blankets to achieve optimal covering in the dents of the paper surface when applying area printing

Special advice

- Not suitable for laser and inkjet printers
- Acid free, pH- neutral
- The paper surface can vary slightly from making to making
- Natural papers have a top side and a bottom side. It is recommended, to use the top side as the front side for the print project.
- For printing and processing, the recommendations of the manufacturers of machines, inks, glues, lamination and embossing foils etc. have to be followed. For any damages caused by improper application, we cannot accept liability.
- Engraving is an ancient craft. The use of modern textures or metallised papers is a challenge. Tests are recommended prior to starting the print run.



Wigston Paper Ltd

Quantum House

Interlink Way South

Bardon

Leicestershire, LE67 1PG

+44 (0)1530 512 700

hello@wigstonpaper.com

www.wigstonpaper.com

