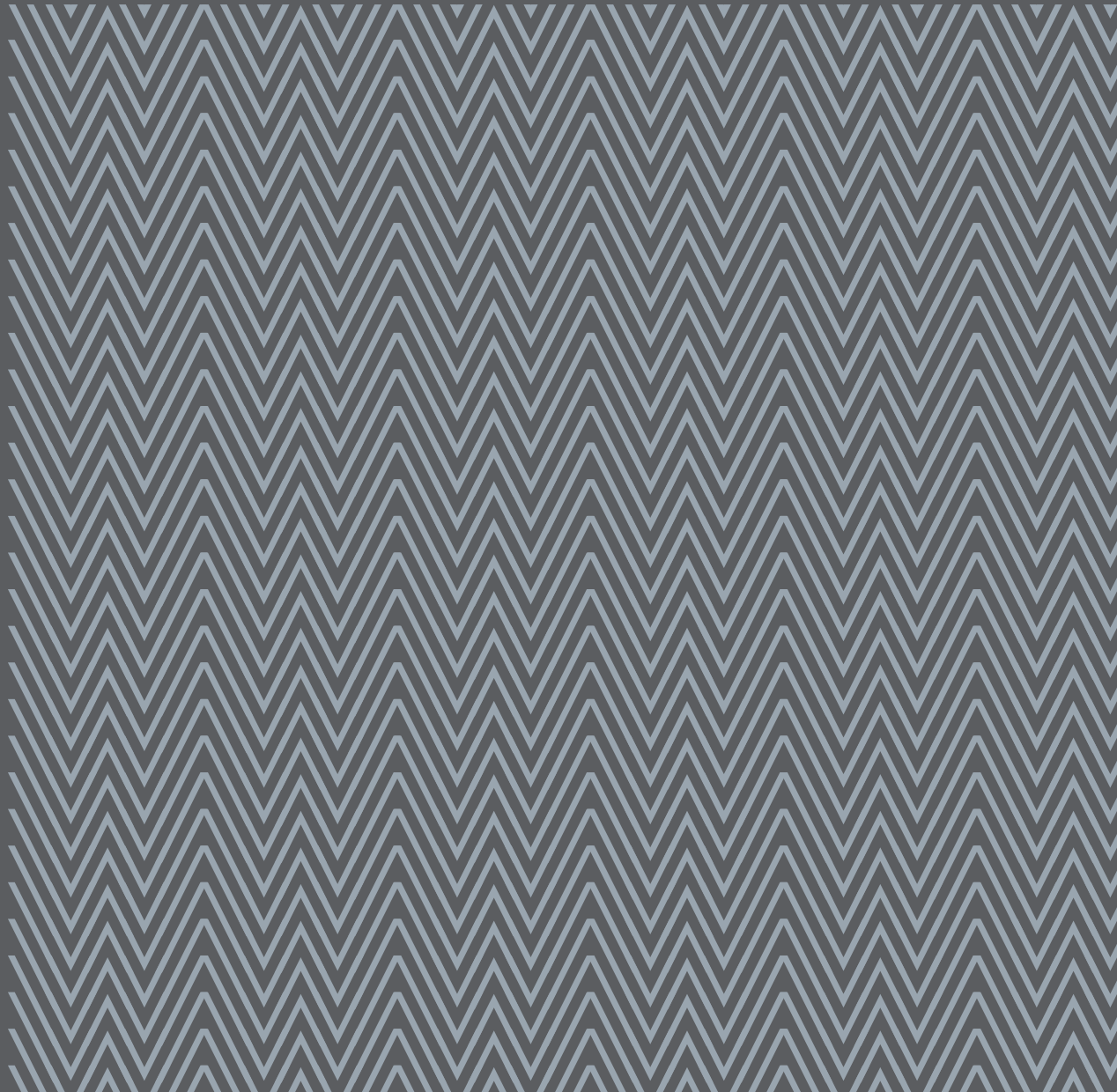


# PRINTING INFORMATION

gmund  
**colors** | MATT



## PRINTING INFORMATION – GMUND COLORS MATT

### Printing

- Offset printing
- Letterpress
- Silk- screen printing
- Blind embossing
- Hot foil stamping
- Paper etching
- Die cutting
- Engraving

### Recommendations for offset printing

- Screens up to 80 l/cm
- Match litho to the paper colour
- Proof printing on same paper stock
- Under colour reduction when applying strong ink coverage

Low absorption of ink, therefore:

- Use of fully oxidative drying inks
- Print dusting, low printing stacks
- Careful drying, minimum of 24 hours

### Recommendations for laser and inkjet printing

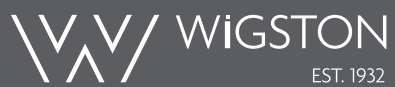
- Gmund Colors Matt in 100 g/m<sup>2</sup> is suitable for laser and inkjet printing in desktop applications
- The suitability for laser and inkjet printing refers to unprinted sheets in delivery format
- Further processing (offset printing, cutting to size, embossing, etc.) must not deleteriously affect the paper and its suitability for laser and inkjet printing
- Laser- compatible printing inks should be used for offset printing and only minimal amounts of dampening agents should be applied if pre-produced offset-printed sheets are intended for subsequent laser printing. An offset screen area with a maximal coverage of 40% is recommended.

## PRINTING INFORMATION – GMUND COLORS MATT

### Special advice

- Acid free, pH- neutral
- The paper surface can vary slightly from making to making
- Natural papers have a top side and a bottom side. It is recommended, to use the top side as the front side for the print project.
- For printing and processing, the recommendations of the manufacturers of machines, inks, glues, lamination and embossing foils etc. have to be followed. For any damages caused by improper application, we cannot accept liability.
- Engraving is an ancient craft. The use of modern textures or metallised papers is a challenge. Tests are recommended prior to starting the print run.

**For more information, please get in touch with the Wigston team on +44 (0)1530 512 700 or email [hello@wigstonpaper.com](mailto:hello@wigstonpaper.com)**



**Wigston Paper Ltd**

Quantum House

Interlink Way South

Bardon

Leicestershire, LE67 1PG

+44 (0)1530 512 700

[hello@wigstonpaper.com](mailto:hello@wigstonpaper.com)

[www.wigstonpaper.com](http://www.wigstonpaper.com)

