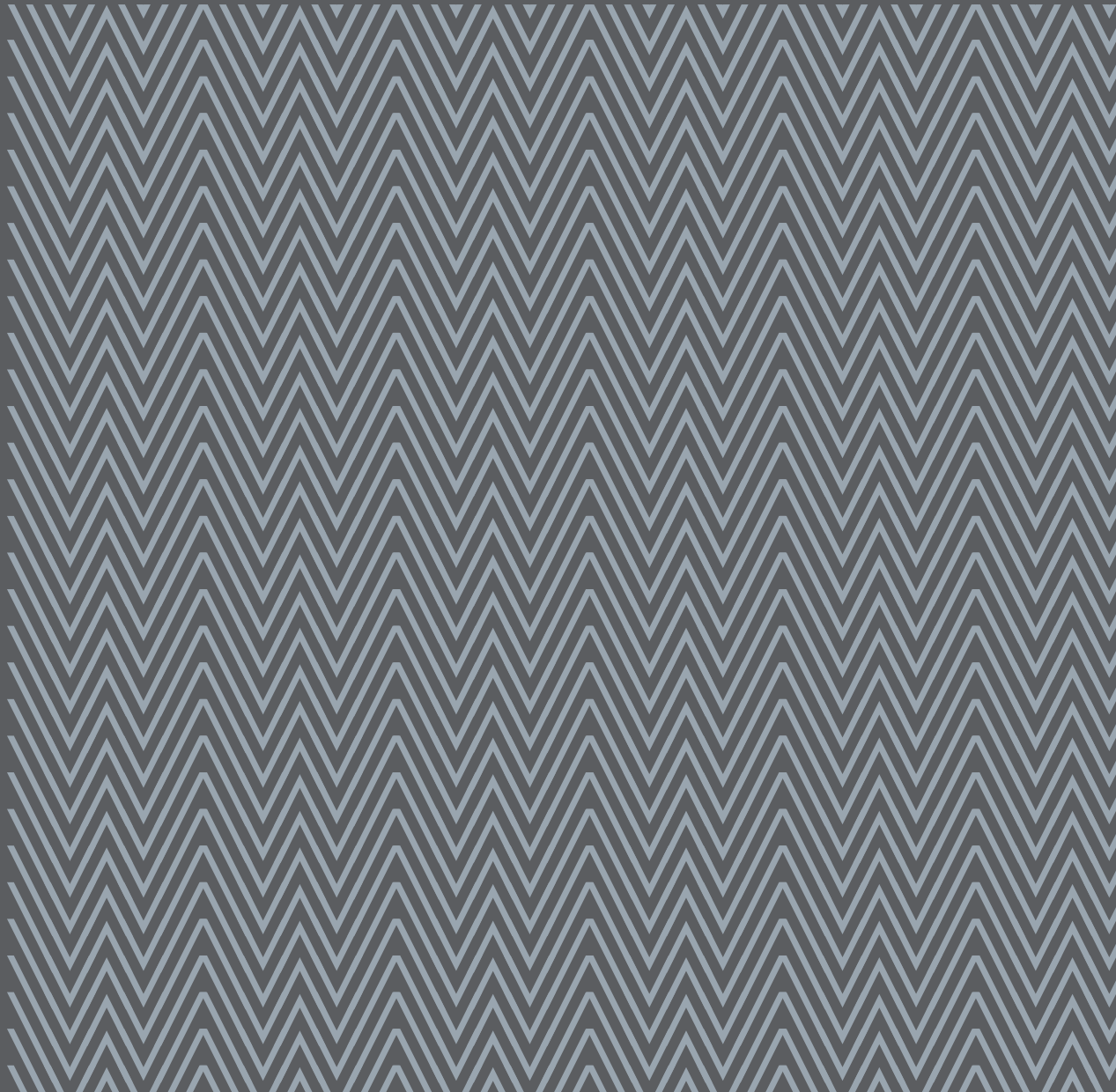


PRINTING INFORMATION

gmund
colors

| VOLUME



WIGSTON
EST. 1932

PRINTING INFORMATION – GMUND COLORS VOLUME

Printing

- Letterpress (flat/flat)
- Silk-screen printing
- Die cutting (flat/flat)

Recommendations

- Proof printing on same paper stock

Special advice

- Due to its volume and thickness, Gmund Colors Volume can only be processed flat.
- The paper surface can vary slightly from making to making.
- Gmund Colors Volume is a unique multi-component material with a very sensitive surface and a very stable core. The paper can accordingly show traces and/or impressions caused by processing, e.g. glossy spots or pressure marks. These are production-related: they may occur during the manufacturing and/or in the further processing, and they are not entirely preventable. These traces are characteristic for Gmund Colors Volume and do not constitute cause for complaint about the goods.
- Gmund Colors Volume has a top side and a bottom side. It is recommended to use the top side as the front side for the print project. The back side is marked with an "X."
- Gmund Colors Volume can be easily damaged by pressure, so it is recommended to minimize the pressure applied by the pressing bar of the guillotine cutter. Waste sheets should be inserted over (at least 15 sheets in 300 g/m²) and under (at least 3 sheets in 300 g/m²) the printed matter.
- Sheets can be stamped as an alternative to cutting.
- A Topmatrix stamp is recommended for this purpose.
- For printing and processing, the recommendations of the manufacturers of machines, inks, glues, lamination and embossing foils, etc. must be followed. We cannot accept liability for any damages caused by improper application.

PRINTING INFORMATION – GMUND COLORS VOLUME

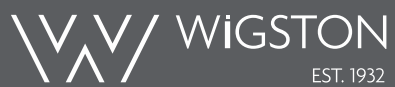
Note

Gmund Colors Volume is a prefabricated material. It was conceived for smaller orders and artisanal processing.

For orders of 500 kg or more, especially for packaging, we can fabricate the material according to your specifications:

- With or without printing (hot foil, offset printing)
- Combinations of paper's colour and grammage according to your specifications
- Fluting laminated on one or both sides with Gmund Colors
- Fluting adapted to suit the intended use

For more information, please get in touch with the Wigston team on +44 (0)1530 512 700 or email hello@wigstonpaper.com



Wigston Paper Ltd

Quantum House

Interlink Way South

Bardon

Leicestershire, LE67 1PG

+44 (0)1530 512 700

hello@wigstonpaper.com

www.wigstonpaper.com

