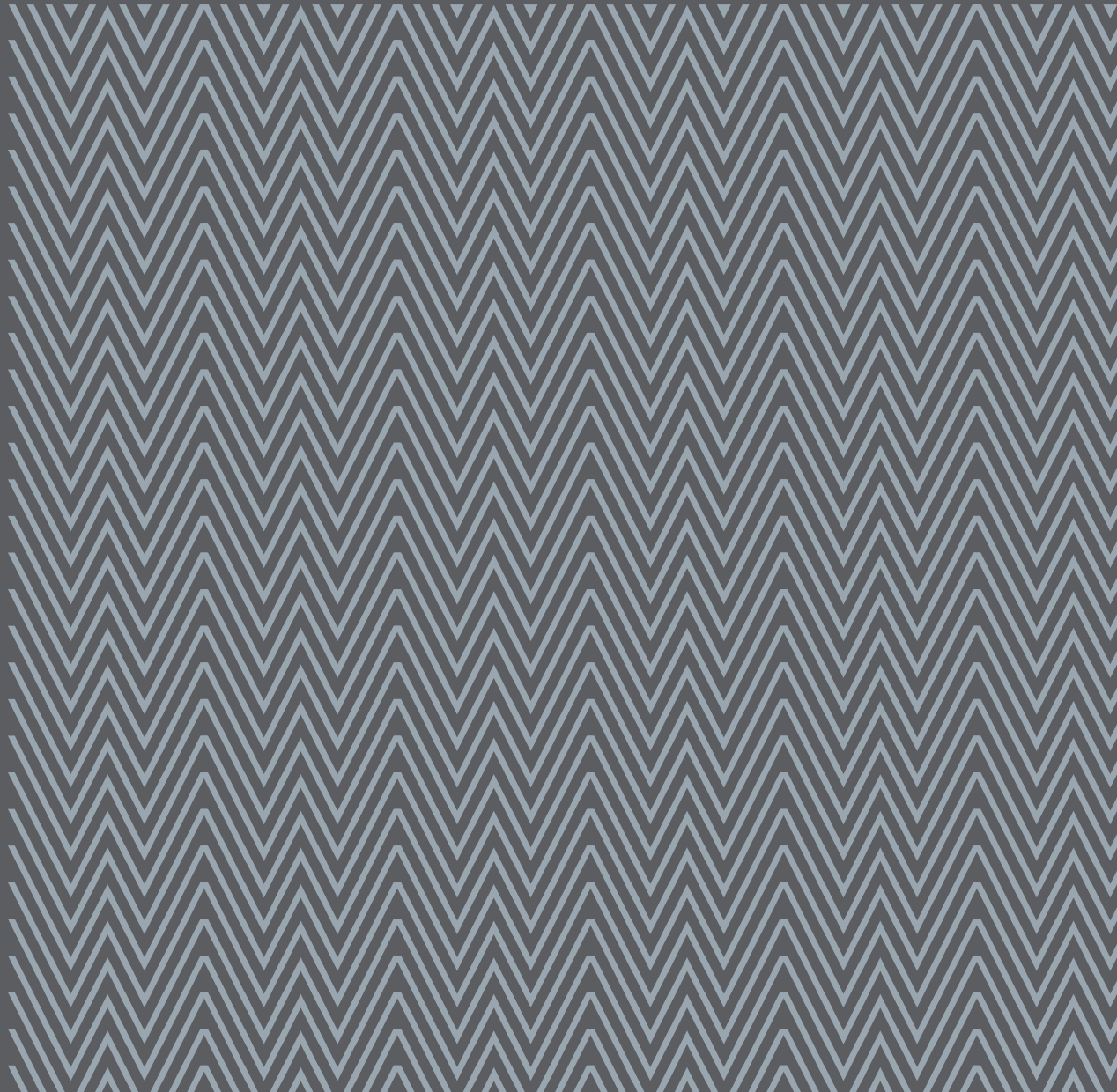


PRINTING INFORMATION

Gmund Bio Cycle



PRINTING INFORMATION – GMUND BIO CYCLE

Printing

- Offset printing (Chlorophyll – Blattgrün is suitable for offset printing, but with some restrictions)
- Letterpress
- Silkscreen
- Blind embossing
- Hot-foil embossing – Stamping

Gmund Bio Cycle

Recommendations for offset printing

- Raster widths up to 80 l/cm
- Adjust the lithograph depending on the paper's color
- Proof on the paper which will be used for the print run – Under color removal (UCR) with ample ink
- Deposits of cotton dust or inclusions on the offset blanket are avoidable and require regular cleansing of the rubber blankets. This is especially true for Chlorophyll – Blattgrün: tiny plant parts can separate from the surface here.
- 600 g/m² can be offset printed only by cardboard printing machines (thickness of the material = ca. 1 mm).

Low absorption of the printing ink, therefore:

- Print using only oxidative-drying inks
- Print dusting, low printing stack
- Dry thoroughly for a minimum of 24 hours

Recommendations for laser and inkjet printing

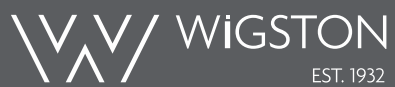
- 100 g/m² is suitable for laser and inkjet printers in office environments
- Suitability for laser and inkjet printers refers to unprinted sheets in the delivered format
- Further processing (offset printing, cutting, embossing, etc.) can adversely affect the paper and its suitability for printing with laser and inkjet printers
- If subsequent laser printing is to be done on printed sheets that were pre-produced with offset printing, then the offset printing should be done with laser-compatible inks and a low application of moistening agents. An offset raster surface with maximally 40% coverage is recommended.

PRINTING INFORMATION – GMUND BIO CYCLE

Special advice

- Inclusions, the look of the sheet and the color may vary slightly from one fabrication to the next due to the composition of the materials and the utilization of natural plant-based raw materials.
- The special character of Chlorophyll – Blattgrün looks best when little ink is used, with blind embossing, and in letterpress printing.
- The printing technique should be adapted to suit the unusual surface of the paper
- Acid-free, pH-neutral
- Rag – Baumwolle has a very soft surface that can easily be marred by
- physical pressure. Pressure and abrasion should be reduced as much as possible to avoid scratches during processing.
- High-quality cotton fibers from the USA are used in the manufacturing of these papers. Cotton is a naturally grown raw material that has not been chemically homogenized. Paper's typical response to atmospheric humidity is quite noticeable here, so the paper may shrink if it becomes very dry.
- Natural papers have an upper side and an underside. It is recommended to use the paper's upper surface as the front of the printed item.
- Cycle – Kreislauf is acid-free and therefore not entirely resistant to aging because of the possible presence of woody fibers in the recycled raw material.
- When printing and processing, follow the manufacturer's recommendations for machines, printing inks, adhesives, laminating foils, stamping foils, etc. Wigston Paper accepts no liability for damage resulting from incorrect use.

For more information, please get in touch with the Wigston team on +44 (0)1530 512 700 or email hello@wigstonpaper.com



Wigston Paper Ltd

Quantum House

Interlink Way South

Bardon

Leicestershire, LE67 1PG

+44 (0)1530 512 700

hello@wigstonpaper.com

www.wigstonpaper.com

