



Golden Staircase to Mt Solitary via Ruined Castle (Dharug & Gundungurra Country)

 5 h 30 min to 7 h 30 min

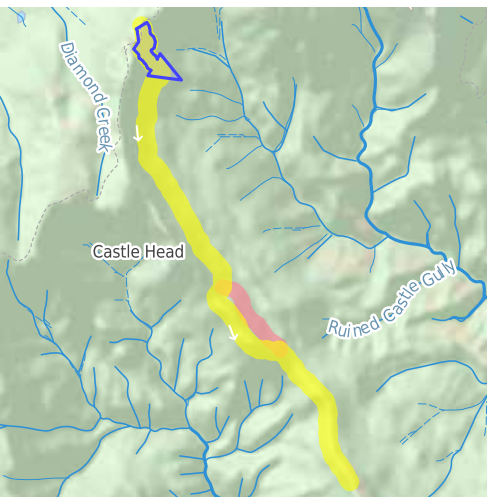
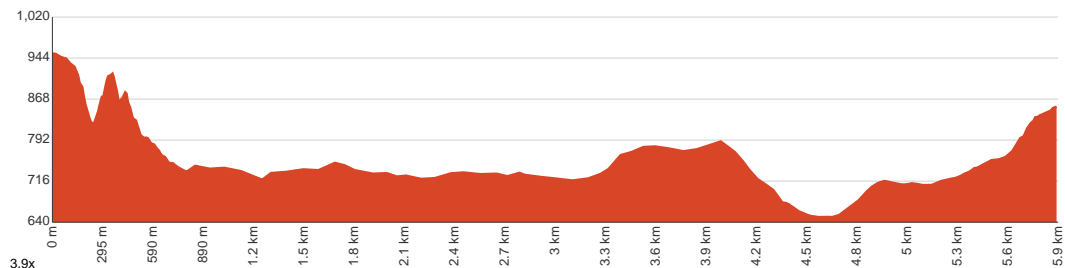

11.9 km
Return


↑ 1065 m
↓ 1065 m


Very challenging



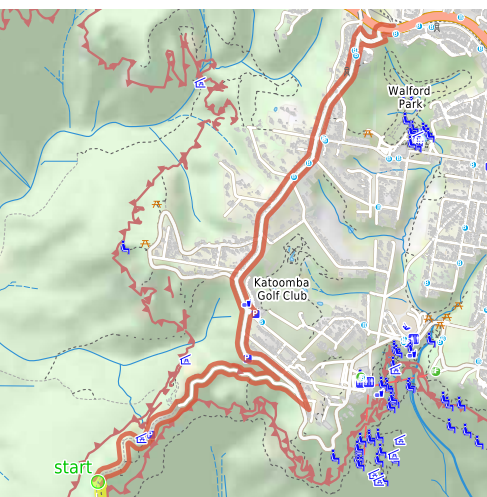
With quite significant hills, this is a great walk is for the day-walker looking for something more challenging than the average Katoomba cliff top walk. With fantastic views at Botting's Lookout, from the top of the Ruined Castle, and especially good views from Mt Solitary, this walk is well worth the time invested. Let us begin by acknowledging the Dharug & Gundungurra people, Traditional Custodians of the land on which we travel today, and pay our respects to their Elders past and present.



Class 5 of 6 Rough unclear track	
Quality of track	Rough unclear track (5/6)
Gradient	Very steep and difficult rock scrambles (5/6)
Signage	No directional signs (5/6)
Infrastructure	No facilities provided (5/6)
Experience Required	High level of bushwalking experience recommended (5/6)
Weather	Foretasted & unexpected storms and severe weather may impact on navigation and safety (4/6)

Getting to the start: From Great Western Highway, A32

- Turn on to Bathurst Road, BMD then drive for 75 m
- Turn right onto Bathurst Road, BMD and drive for another 145 m
- Turn left onto Valley Road, BMD and drive for another 1.8 km
- Turn slight left onto Cliff Drive, BMD and drive for another 210 m
- At roundabout, take exit 3 onto Cliff Drive, BMD and drive for another 770 m
- Turn sharp right onto Glenraphael Drive and drive for another 990 m
- Keep left onto Glenraphael Drive and drive for another 870 m



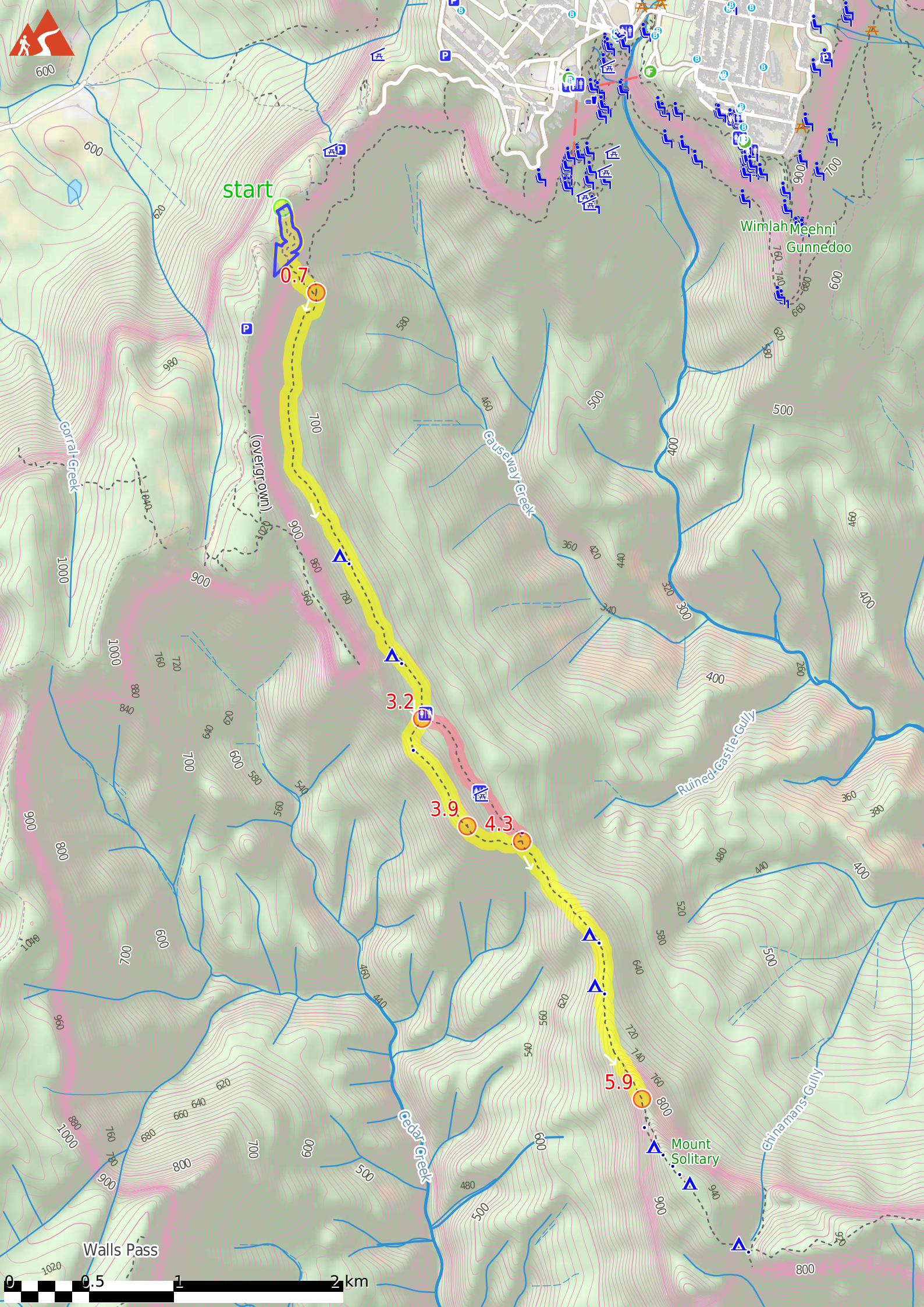
Before you start any journey ensure you;

- Tell someone you trust where you are going and what to do if you are late returning
- Have adequate equipment, supplies, skills & knowledge to undertake this journey safely
- Consider weather forecasts, park/track closures & fire dangers
- Can respond to emergencies & call for help at any point
- Are healthy and fit enough for this journey

If not, change plans and stay safe. It is okay to delay and ask people for help.

Share
[Bushwalk.com](https://bushwalk.com/j/8CFA6X)
[/j/8CFA6X](https://bushwalk.com/j/8CFA6X)





start

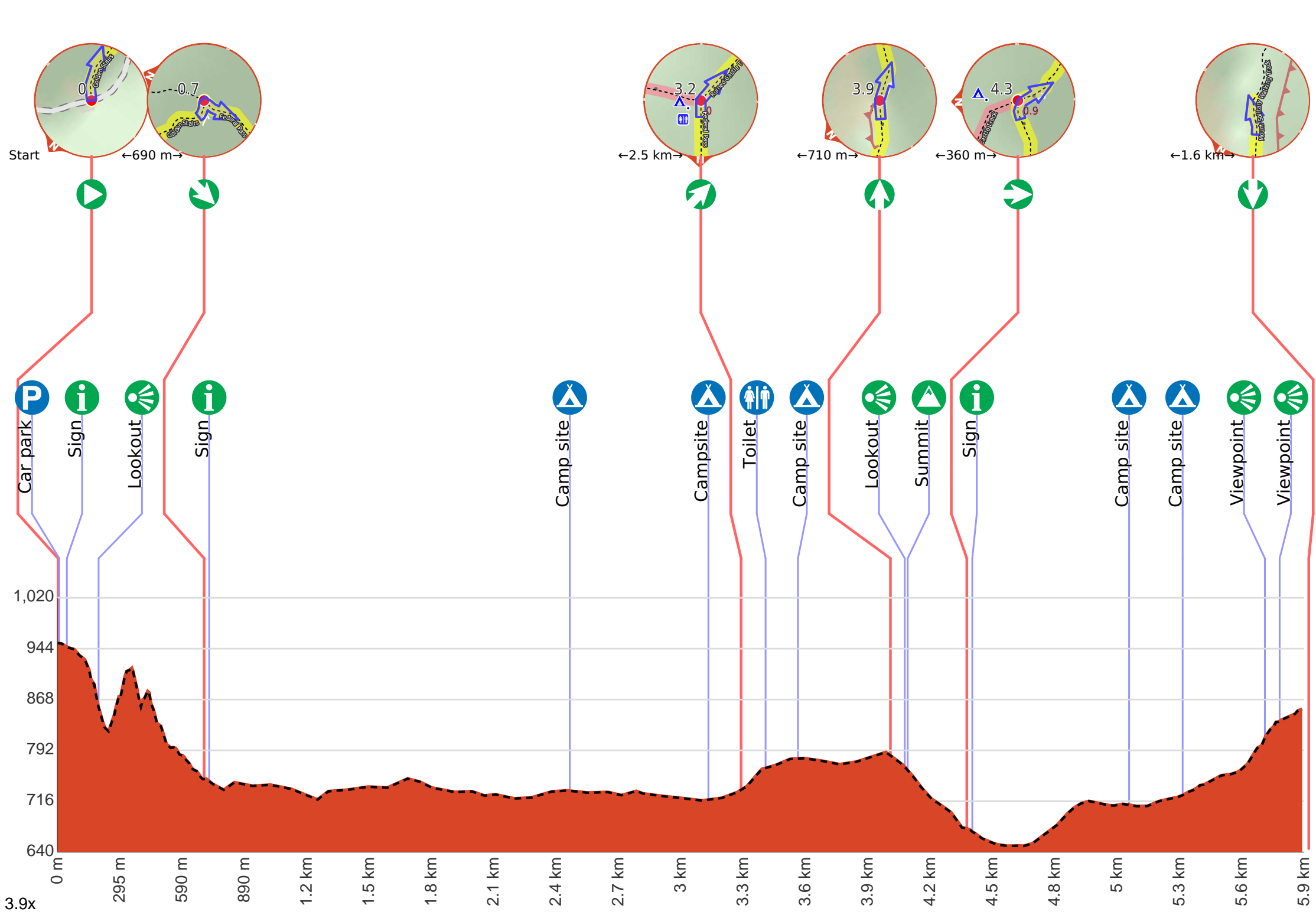
Wimlah Meehni
Gunnedoo

Ruined Castle Gully

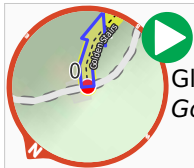
Mount Solitary

Walls Pass





Getting started: From the Golden Stairs car park and information sign on Glenraphael Dr, the walk follows the 'Golden Stairs / To Federal Pass' sign along the narrow track. The track leads gently downhill past the black and yellow 'Warning - Sections of the Golden Stairs are unfenced and can be slippery when wet' sign, with the occasional glimpse out to Malaita Point and towards the Three Sisters. The walk soon heads down a few steep eroded sections of track and passes through a couple of switchbacks. The track then leads to a fenced rock platform signposted as 'Botting's L.O.'.



At the intersection of Golden Stairs & Glenraphael Drive **Start** heading along *Golden Stairs* (a walking track).



Find the Golden Stairs Car Park at the start.



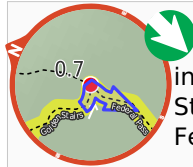
After 35 m pass the sign (5 m on your left).



After another 150 m find the "Botting's Lookout" (5 m on your left).



Botting's Lookout offers great views over the Jamison Valley and the cliff line, including the Landslide, Malaita Point and the Golden Stairs. A plaque at the lookout states that the lookout was named after Walter Botting (1887-1985), a pioneer trail-maker of the Katoomba District.



After another 500 m (at the intersection of Federal Pass & Golden Stairs) **turn sharp right**, to head along Federal Pass.



After another 25 m pass the sign (on your right).



After another 1.7 km come to the camp site (10 m on your right).
Open fires are not allowed.

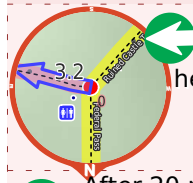


After another 660 m find the "Miners Campsite" (10 m on your right).



This flat campsite beside the Federal Pass walking track about 2.2km south of the intersection at the bottom of the Golden Stairs. There is short constructed stone wall left over from when there area was habited by miners. The campsite is surrounded by a tall forest, bracken ferns and some nice fern trees. There is no water or facilities.

Start of an alternate route: An alternative route linking Northern Ruined Castle campsite to Intersection South of Ruined Castle.



To take the alternate route turn left here. **Start.**



After 20 m pass the sign (on your left).



After another 20 m find the "Northern Ruined Castle campsite" (on your left).



A short distance south east of the intersection with the Federal Pass and the northern access track to the Ruined Castle, is a fairly large basic campsite. There are two main flat areas for camping, both with fire scares. The area is surround with tall trees and ferns. There is no water nor any other facilities.



After another 540 m pass the "Ruined Castle campsite" (10 m on your left).



Then pass the picnic table (15 m on your left).



Then pass the shelter (20 m on your left).



After another 50 m find the "Ruined Castle mine campsite" (10 m on your left).



This campsite is almost due east of Ruined Castle, just off the track that leads around the base of hill. The campsite is down a short but steep bank near the site of an old mine. The are a few campsites scattered along the flat area, mostly surrounded by some tall stringy barks. There are a few fire scars and some filtered valley views. A pleasant spot to stay. There was once a water spring nearby, but this is no longer reliable, you will need to carry in your own water.

