



Gloucester River Walking Track

(Biripi & Worimi Country)

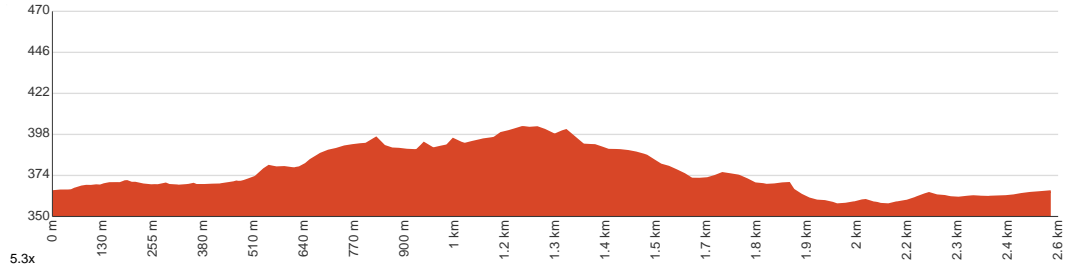
 1 h to 1 h 30 min


2.5 km
Circuit

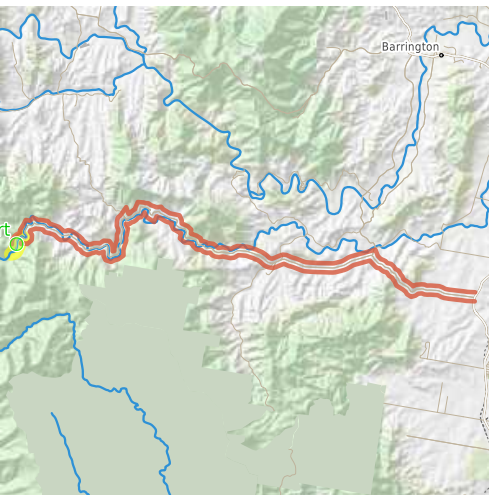

↑ 76 m
↓ 76 m


4
Hard track

Starting from Gloucester River campground this circuit walk is perfect for families. It leads along the river and takes in scenic views and plenty of opportunities for observing animals and plants. Let us begin by acknowledging the Biripi & Worimi people, Traditional Custodians of the land on which we travel today, and pay our respects to their Elders past and present.



Class 4 of 6 Rough track, where fallen trees and other obstacles are likely	
Quality of track	Rough track, where fallen trees and other obstacles are likely (4/6)
Gradient	Short steep hills (3/6)
Signage	Minimal directional signs (4/6)
Infrastructure	Limited facilities (such as cliffs not fenced, significant creeks not bridged) (4/6)
Experience Required	Some bushwalking experience recommended (3/6)
Weather	Foretasted & unexpected storms and severe weather may impact on navigation and safety (4/6)



Getting to the start: From The Bucketts Way, 2

- Turn on to Gloucester Tops Road then drive for 6.2 km
- Turn left onto Gloucester Tops Road and drive for another 15.5 km
- Turn sharp left onto Gloucester Tops Road and drive for another 9.6 km

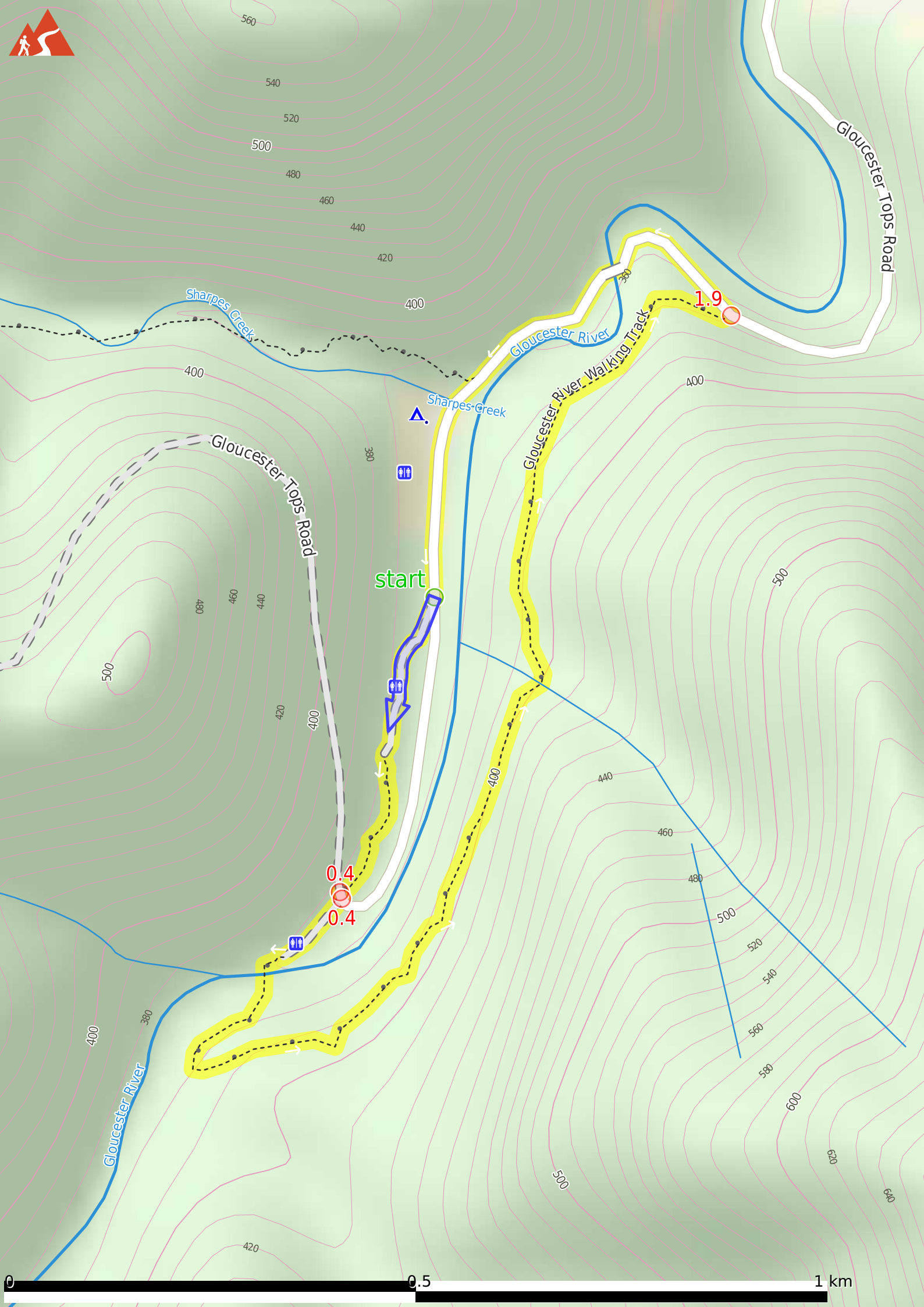
Before you start any journey ensure you;

- Tell someone you trust where you are going and what to do if you are late returning
- Have adequate equipment, supplies, skills & knowledge to undertake this journey safely
- Consider weather forecasts, park/track closures & fire dangers
- Can respond to emergencies & call for help at any point
- Are healthy and fit enough for this journey

If not, change plans and stay safe. It is okay to delay and ask people for help.

Share
Bushwalk.com
[/j/DOG71J](https://www.bushwalk.com/j/DOG71J)



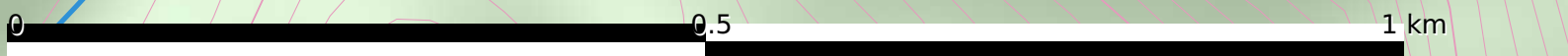


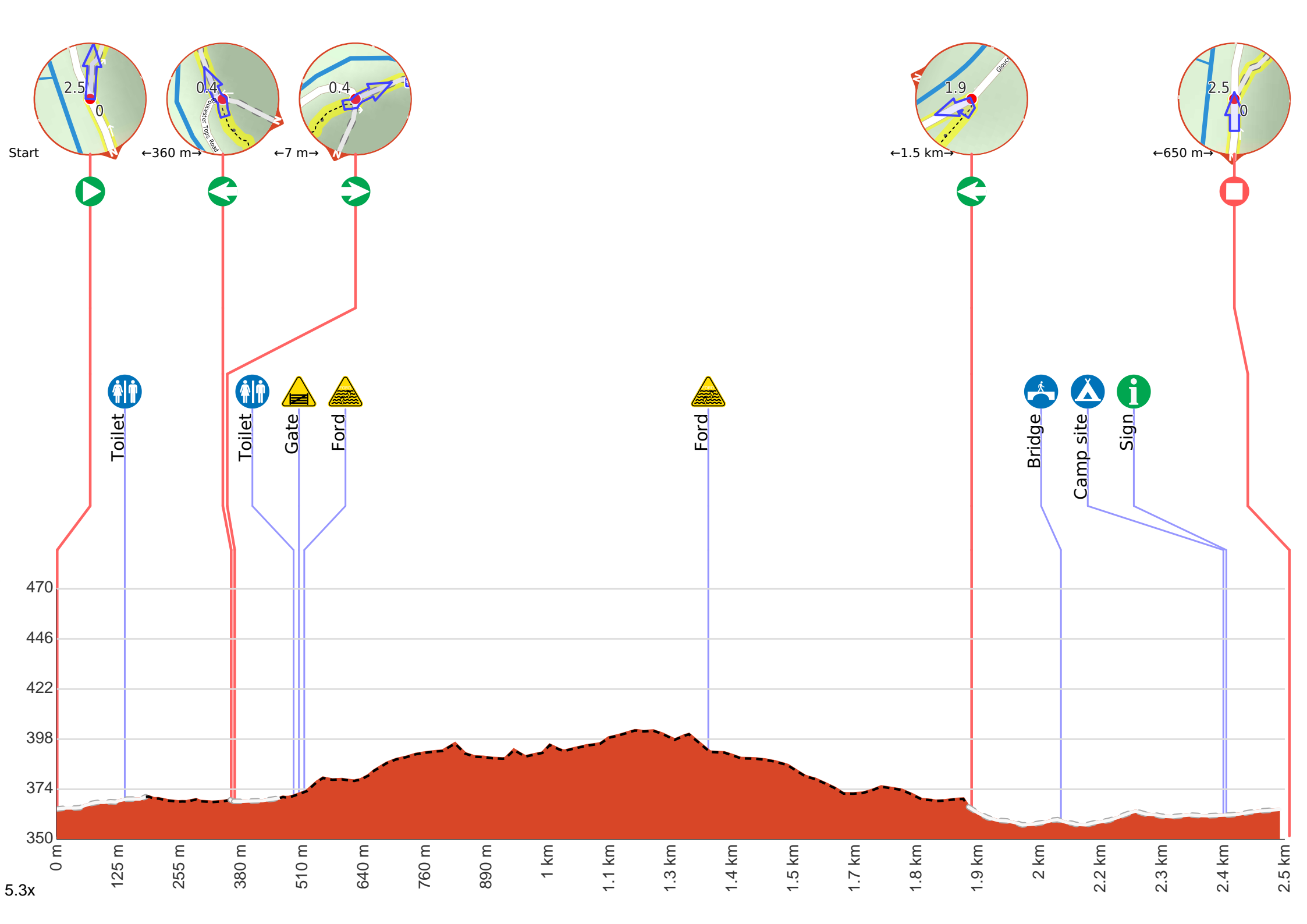
start

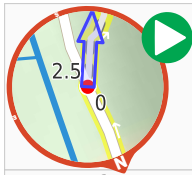
0.4

0.4

1.9



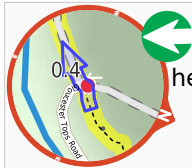




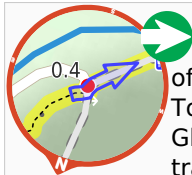
Start.



After 140 m pass the toilet (5 m on your right).



After another 220 m **turn left**, to head along Gloucester Tops Road.



After another 7 m (at the intersection of Gloucester River Access & Gloucester Tops Road) **turn right**, to head along Gloucester River Access (a vehicle track).



After another 120 m pass the toilet (6 m on your right).



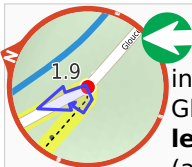
After another 10 m head through/around the gate.



After another 10 m cross the ford.



After another 830 m cross the ford.



After another 540 m (at the intersection of Gloucester Tops Road & Gloucester River Walking Track) **turn left**, to head along Gloucester Tops Road (a vehicle track).



After another 185 m cross the bridge (about 25 m long)



After another 190 m (at the intersection of Gloucester Tops Road & Sharpes Creek Track) **continue straight**, to head along Gloucester Tops Road.



After another 120 m come to the "Gloucester River Camping Area" (25 m on your right).
W: www.nationalparks.nsw.gov.au

There is a fee to use this campsite.



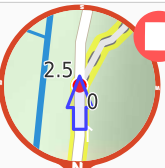
After another 6 m pass the sign (9 m on your left).



After another 130 m come to a toilet.



About 15 m past the end is a BBQ.



The end.



A sign.