



Cannabullen Falls Track

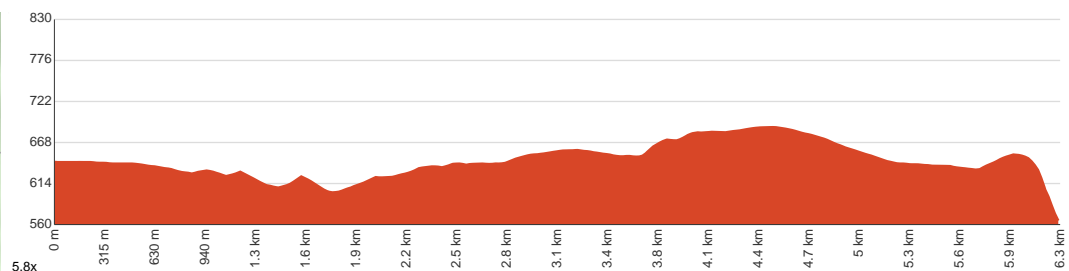
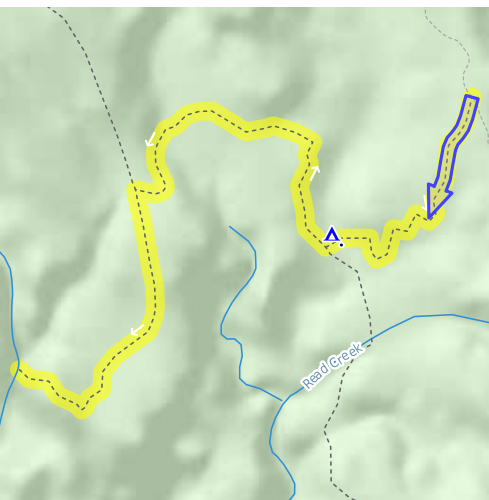
 4 h to 6 h


12.5 km
Return


↑ 353 m
↓ 353 m


Very challenging

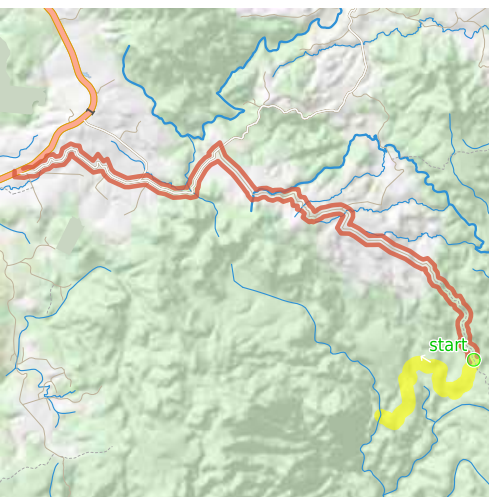
Starting from Sutties Gap Road, Palmerston, this return walk takes you to the Cannabullen Falls, exploring the rainforest of Tully Falls NP and passing by Henson Creek camping area along the way. Expect a relatively undemanding journey until the end of the track, where you'll have to do a downward scramble to get to the lovely falls and the swimhole. Fortunately, there are trees and footholds that will help you on the way down(or up). The hike through the rainforest is exceptionally peaceful and tranquil, so feel free to stop and take in the scenery. Keep in mind that one of the creek crossings may require you to take your shoes off as the water level is generally knee-high. Watch out for Wait-a-while plants, they tend to live up to their name. Let us begin by acknowledging the Traditional Custodians of the land on which we travel today, and pay our respects to their Elders past and present.



Class 5 of 6 Rough unclear track	
Quality of track	Formed track, with some branches and other obstacles (3/6)
Gradient	Very steep and difficult rock scrambles (5/6)
Signage	Clearly signposted (2/6)
Infrastructure	Limited facilities, not all cliffs are fenced (3/6)
Experience Required	Some bushwalking experience recommended (3/6)
Weather	Foretasted & unexpected storms and severe weather may impact on navigation and safety (4/6)

Getting to the start: From Kennedy Highway, 1

- Turn on to Palmerston Highway then drive for 8.3 km
- Turn right onto Maalan Road and drive for another 5.3 km
- Keep right onto Sutties Gap Road and drive for another 7.4 km



Before you start any journey ensure you;

- Tell someone you trust where you are going and what to do if you are late returning
- Have adequate equipment, supplies, skills & knowledge to undertake this journey safely
- Consider weather forecasts, park/track closures & fire dangers
- Can respond to emergencies & call for help at any point
- Are healthy and fit enough for this journey

If not, change plans and stay safe. It is okay to delay and ask people for help.

Share
[Bushwalk.com](https://bushwalk.com/ij/GH6SHM)
[/ij/GH6SHM](https://bushwalk.com/ij/GH6SHM)





Misty Mountains Walk

start

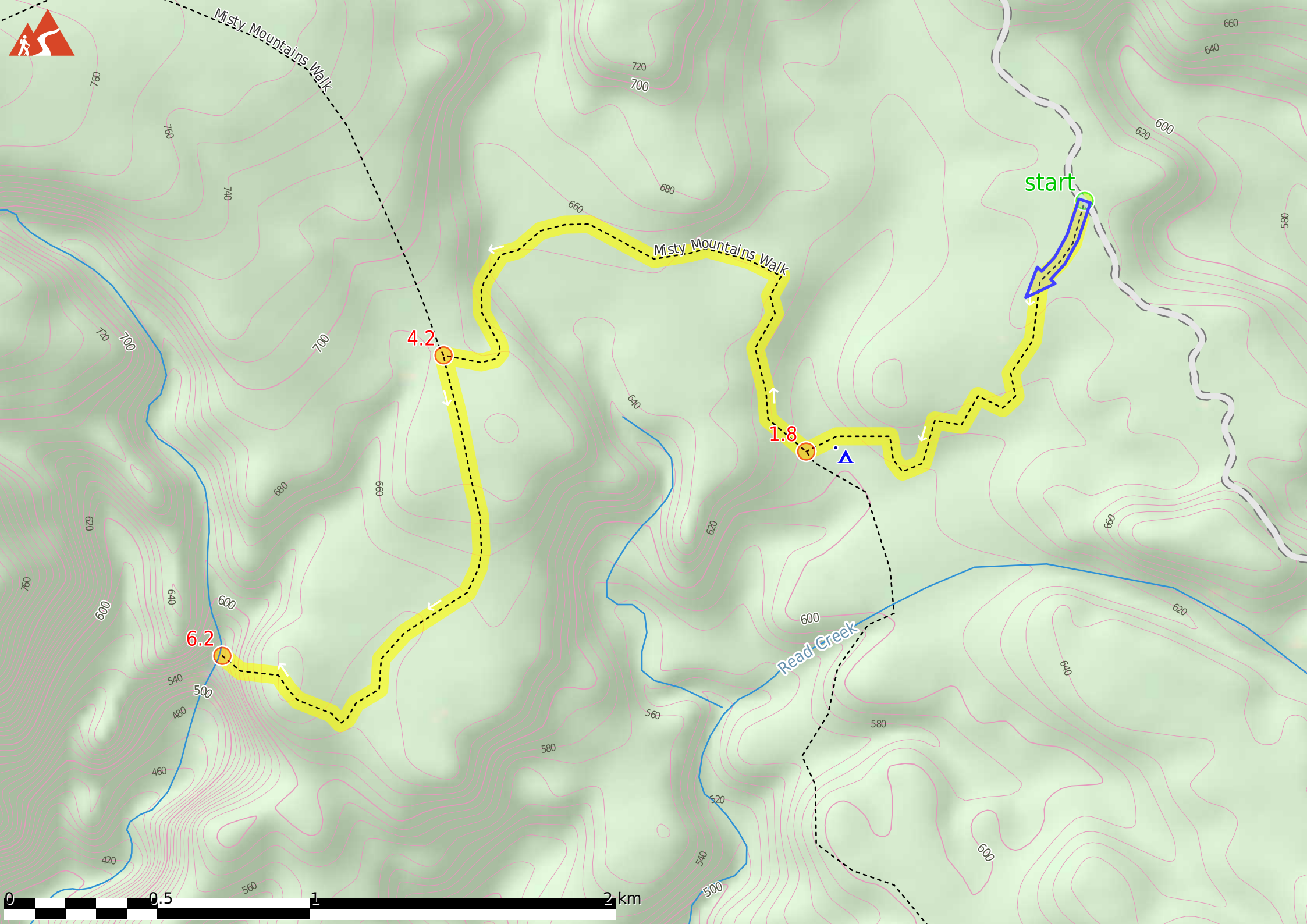
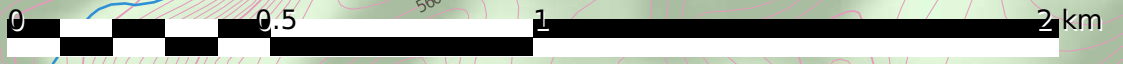
Misty Mountains Walk

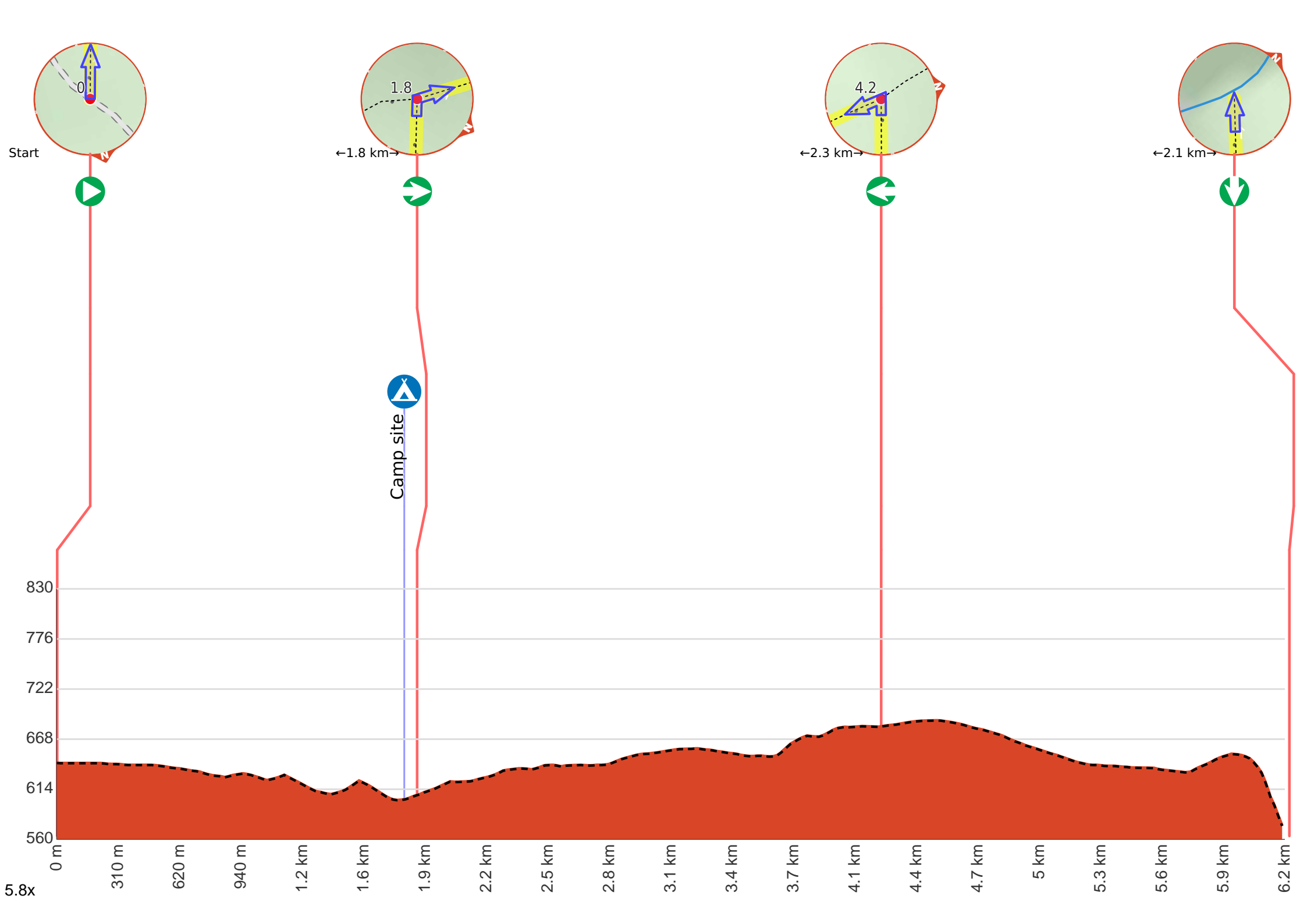
Read Creek

4.2

1.8

6.2





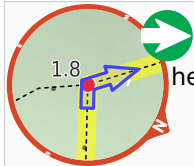
Getting started: From Sutties Gap Road(6.12km southeast of intersection with Maalan Road), head SSW along the dirt track following the signage(green) for "Hinson Creek campign area - Cannanullen Creek walking track". Stay on the designated track as it meanders deeper into the woodland to continue along Cannabullen Falls Track.



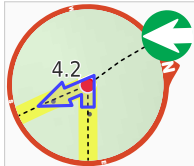
Start.



After 1.8 km come to the "Hinson Creek camping area" (35 m on your left).



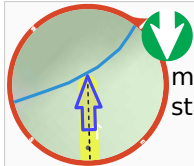
After another 65 m **turn right**, to head along Misty Mountains Walk.



After another 2.3 km **turn left**.



After another 2.1 km come to "Cannabullen Falls".



Turn around here and retrace the main route for 6.2 km to get back to the start.