



Charlotte Pass Village and Mt Stilwell Loop

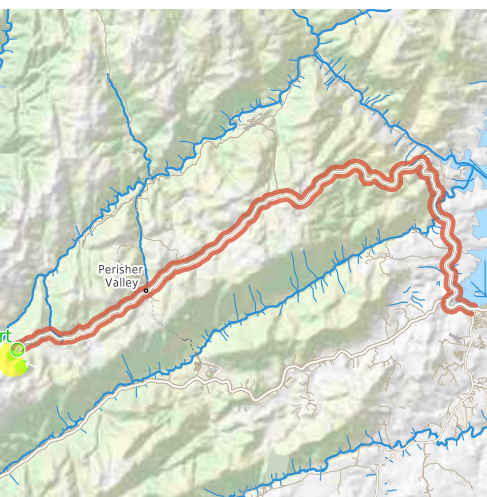
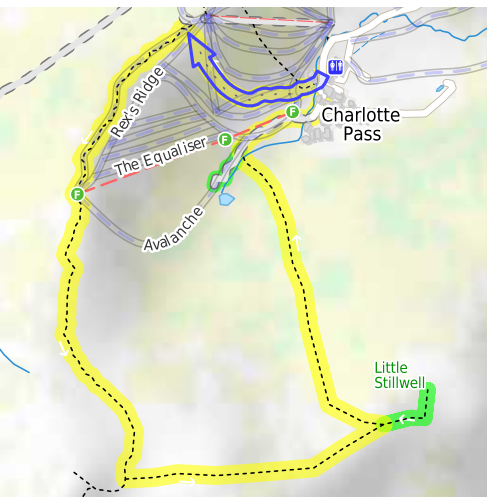
(Ngarigo Country)

 1 h 45 min to 2 h 15 min

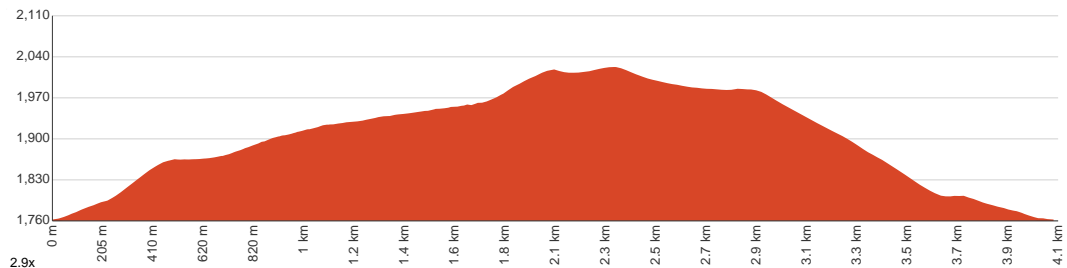

4.1 km
Circuit


↑ 267 m
↓ 267 m


Hard track



This loop walk starts at Charlotte Pass, and winds up to Mt Stilwell's peak, with stunning views in every direction. The walk then goes along the ridge line to the village lookdown, near the demolished Tbar station, before returning to the village through the snow gum forest. There is an optional side trip to the village dam, in Spencers Creek, that is a nice area for a picnic before returning to the village. Let us begin by acknowledging the Ngarigo people, Traditional Custodians of the land on which we travel today, and pay our respects to their Elders past and present.



Class 4 of 6

Rough track, where fallen trees and other obstacles are likely

Quality of track

Rough track, where fallen trees and other obstacles are likely (4/6)

Gradient

Very steep (4/6)

Signage

Minimal directional signs (4/6)

Infrastructure

Limited facilities, not all cliffs are fenced (3/6)

Experience Required

Moderate level of bushwalking experience recommended (4/6)

Weather

Foretasted & unexpected storms and severe weather may impact on navigation and safety (4/6)

Getting to the start: From Barry Way

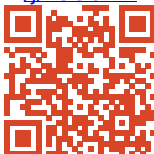
- Turn on to Kosciuszko Road then drive for 12.4 km
- Keep left and drive for another 255 m
- Turn slight left onto Kosciuszko Road and drive for another 26.3 km
- Turn left onto Charlotte Pass Access and drive for another 770 m

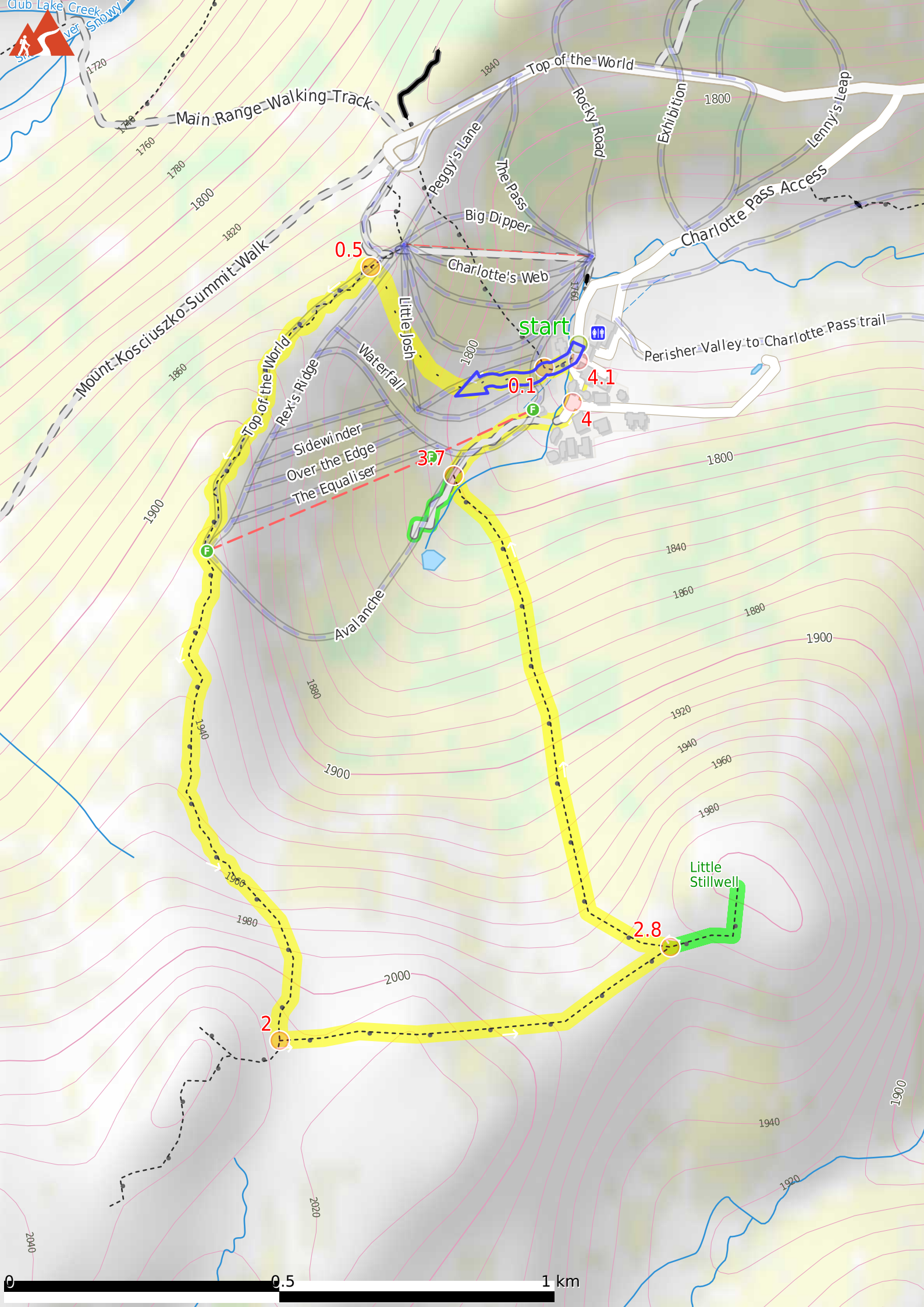
Before you start any journey ensure you;

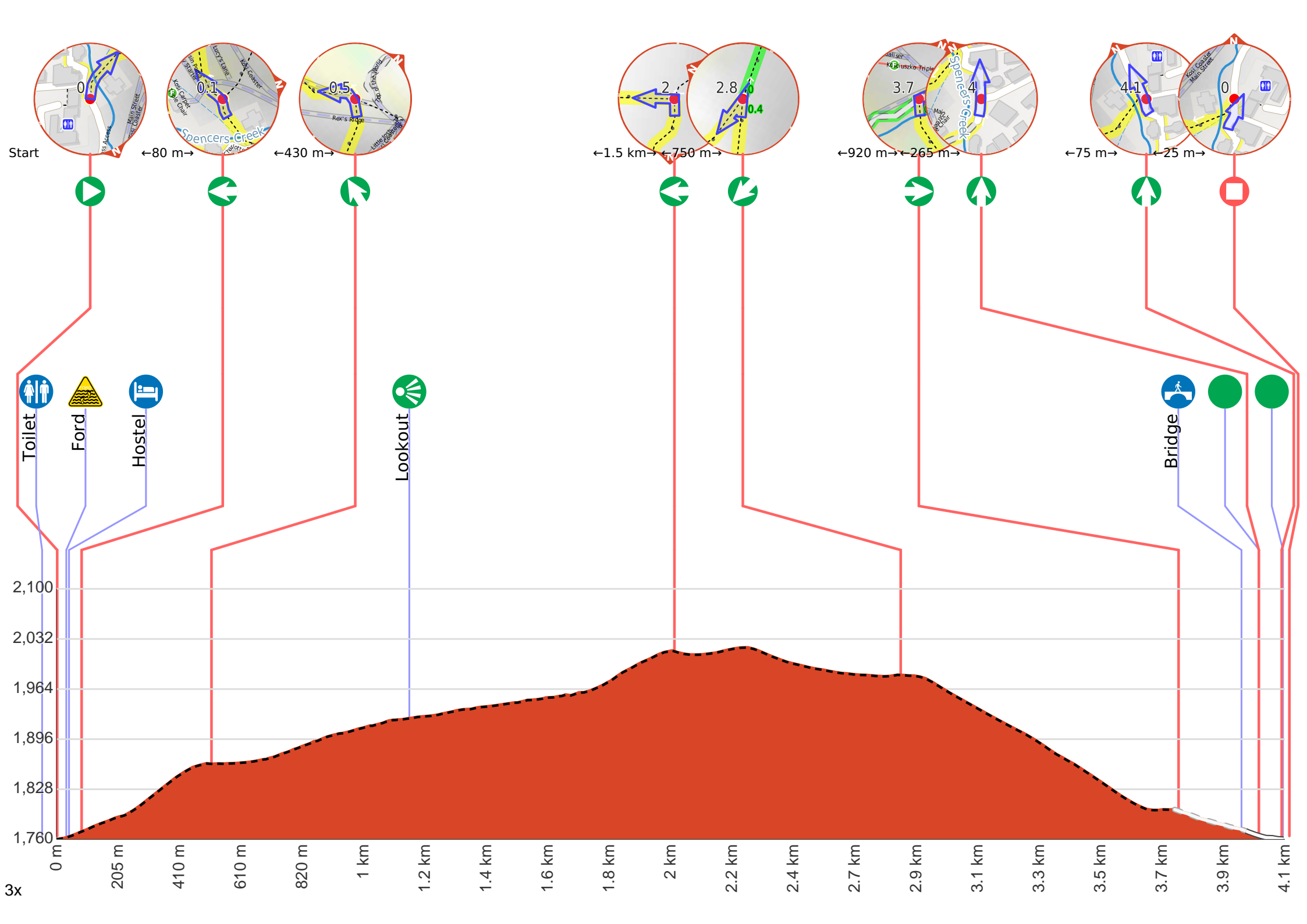
- Tell someone you trust where you are going and what to do if you are late returning
- Have adequate equipment, supplies, skills & knowledge to undertake this journey safely
- Consider weather forecasts, park/track closures & fire dangers
- Can respond to emergencies & call for help at any point
- Are healthy and fit enough for this journey

If not, change plans and stay safe. It is okay to delay and ask people for help.

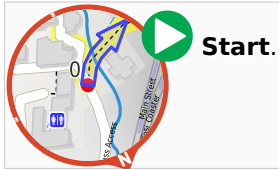
Share
[Bushwalk.com](https://bushwalk.com/ij/K5UODH)
[/ij/K5UODH](https://bushwalk.com/ij/K5UODH)







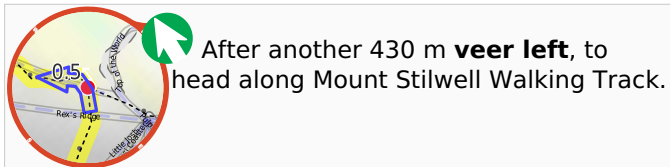
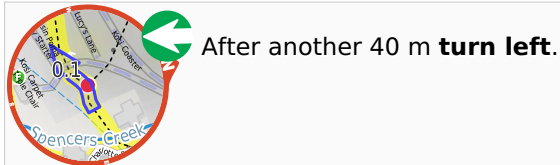
Getting started: From the bottom of the Basin Poma lift, this walk follows the grassy management trail which winds along the side of the hill. The walk turns up the ridge towards the top of the Pulpit T-bar and leaves the management trail as it fades out. The walk continues up the ridge to the top of the Pulpit T-bar.



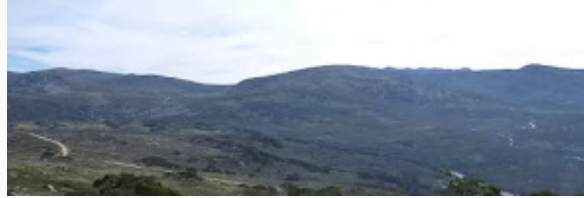
There is a toilet (about 50 m back from the start).

After 80 m cross the ford.

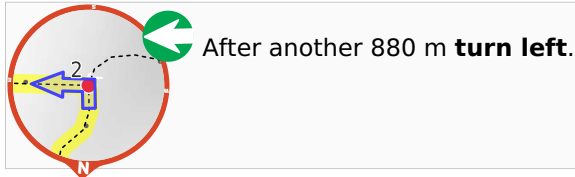
After another 9 m pass the "Bella Vista Staff Lodge" (15 m on your right).



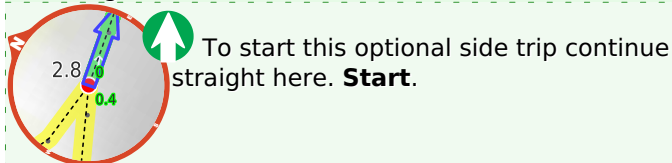
After another 660 m find the "Kangaroo Ridge chairlift lookout platform" (10 m on your right).



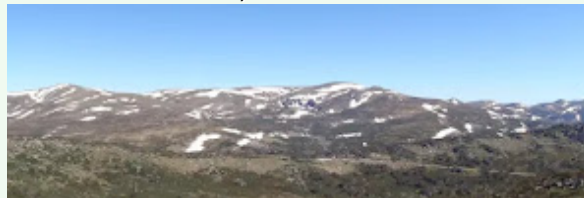
At the top of the Kangaroo Ridge chairlift lies a steel platform. This partially fenced lookout offers broad views to the north-west over the Snowy River valley and across the Main Range. From the chairlift, there are also views down to Charlotte Pass Village.



Start of an optional side trip: An optional side trip to Village Lookdown.

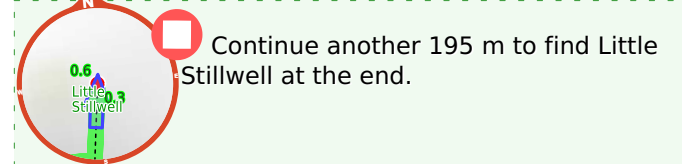
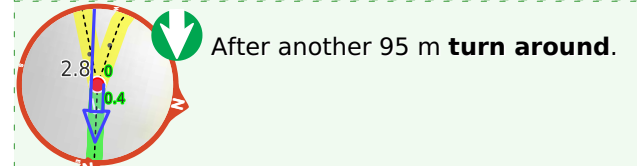


Charlotte Pass Village Lookdown (about 85 m back from the start).



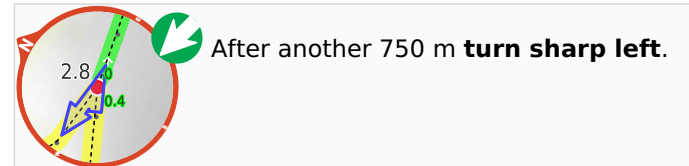
The Charlotte Pass village lookdown is located on the ridge line east of Mt Stilwell, where the remains of what appears to be an old Tbar lift leading down into the valley to the south are located. From the lookdown you can also see all the way across to the tall cliffs behind Blue Lake and to Mt Twynam in the distance.

After 300 m come to the "Little Stilwell".

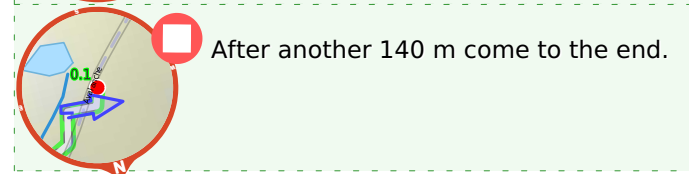
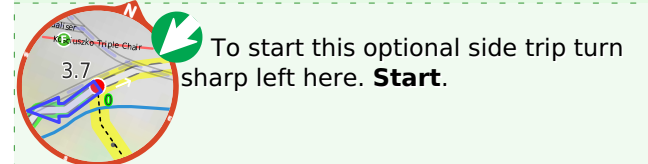


Turn around and retrace your steps back the 590 m to the main route.


Back at the main route continue straight and follow on from the 2.8 km waypoint.



Start of an optional side trip: An optional side trip to Charlotte Pass Dam.



● About 55 m past the end is "Charlotte Pass Dam".



Charlotte Pass Dam is a relatively small store of water in the upper reaches of Spencers Creek, and a short stroll south from the Charlotte Pass village.

▼ Turn around and retrace your steps back the 140 m to the main route.

➡ Back at the main route turn right and follow on from the 3.7 km waypoint.



➡ After another 920 m **turn right**.

🚶 After another 210 m cross the bridge (about 15 m long)

● After another 45 m find the "Kosciuszko Chalet Hotel" (10 m on your right). Spend new years eve in one of Australias highest resorts as the Kosciuszko Chalet opens in the summer from the 26th of December to the 12th of January. For more information and bookings, call 1800 026 369 or visit the websit on the link attached



➡ **Continue straight**, to head along Charlotte Pass Access.


● After another 80 m find the "Charlotte Pass Village" (on your left).



Charlotte Pass is a small village consisting mostly of resorts and hotels, and a number of neighbouring ski runs. This small township is located a stone's throw from the end of Kosciuszko Road, where the turning circle and public toilets were put in place after the last stretch of the road (that winds down across the Snowy River and up to Rawsons Pass via Seamans Hut) was closed to public vehicles.



➡ **Continue straight**, to head along Charlotte Pass Access.



After another 25 m come to the end.