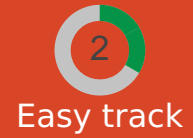
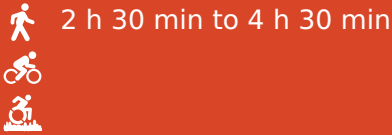
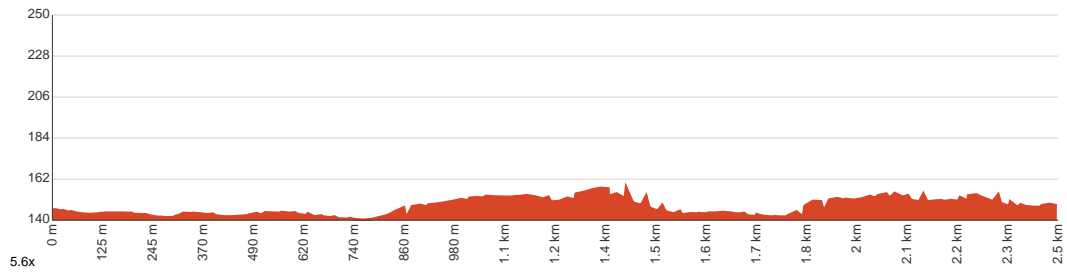
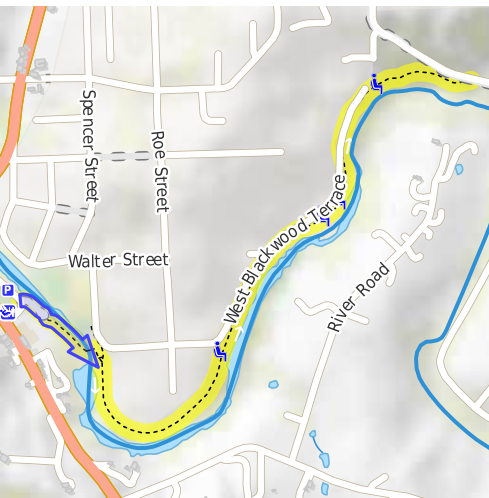




Blackwood River Trail



Starting from the car park at Blackwood River Park, Bridgetown, this return walk takes you on a stroll along the riverside. This is a little gem of a walk for everyone, situated close to the urban setting. It is a magical walk, especially during winter and spring, as the sun illuminates the mossy logs through the early morning mist. The area is suitable for birdwatching as well. It hosts red-tailed black cockatoos, and their calls echo throughout the valley. You can also complete the walk by cycling, and dogs are welcome on a leash. Let us begin by acknowledging the Traditional Custodians of the land on which we travel today, and pay our respects to their Elders past and present.



Class 2 of 6 Clear and well formed track or trail	
Quality of track	Clear and well formed track or trail (2/6)
Gradient	Flat, no steps (1/6)
Signage	Clearly signposted (1/6)
Infrastructure	Generally useful facilities (such as fenced cliffs and seats) (1/6)
Experience Required	No experience required (1/6)
Weather	Weather generally has little impact on safety (1/6)

Getting to the start: From South Western Highway, 1, Bridgetown.

- Turn on to then drive for 95 m
- Turn sharp right and drive for another 3 m



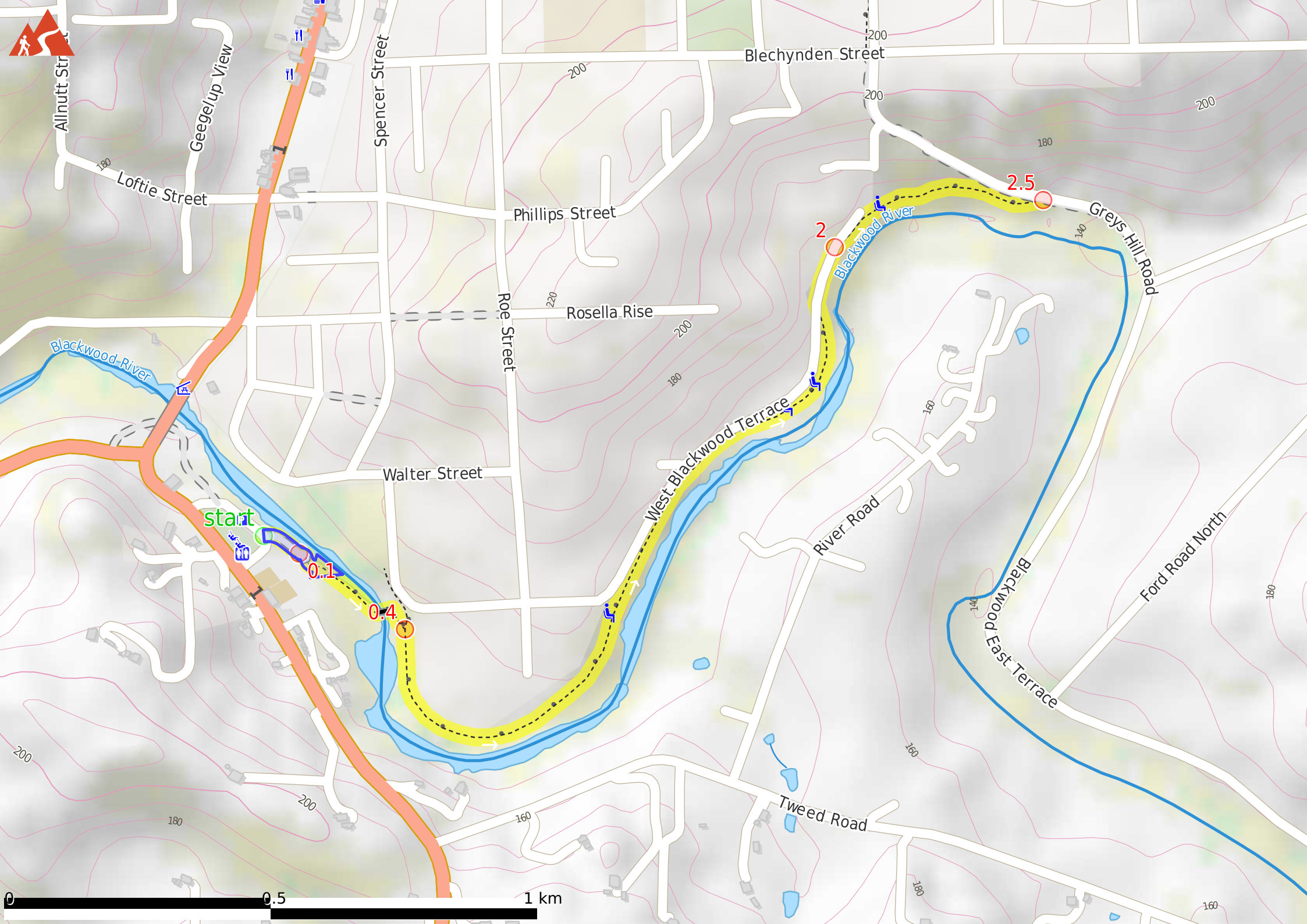
Before you start any journey ensure you;

- Tell someone you trust where you are going and what to do if you are late returning
- Have adequate equipment, supplies, skills & knowledge to undertake this journey safely
- Consider weather forecasts, park/track closures & fire dangers
- Can respond to emergencies & call for help at any point
- Are healthy and fit enough for this journey

If not, change plans and stay safe. It is okay to delay and ask people for help.

Share
[Bushwalk.com](https://bushwalk.com/j/Q14JVU)
[/j/Q14JVU](https://bushwalk.com/j/Q14JVU)





Allnutt Str

Geegelup View

Loftie Street

Spencer Street

Phillips Street

Rosella Rise

Roe Street

Walter Street

West Blackwood Terrace

River Road

Tweed Road

Blechynden Street

2.5

2

0.1

0.4

start

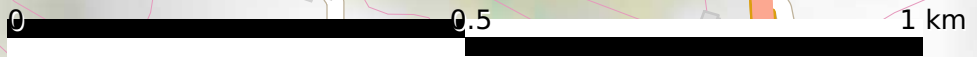
Greys Hill Road

Ford Road North

Blackwood East Terrace

Blackwood River

Blackwood River

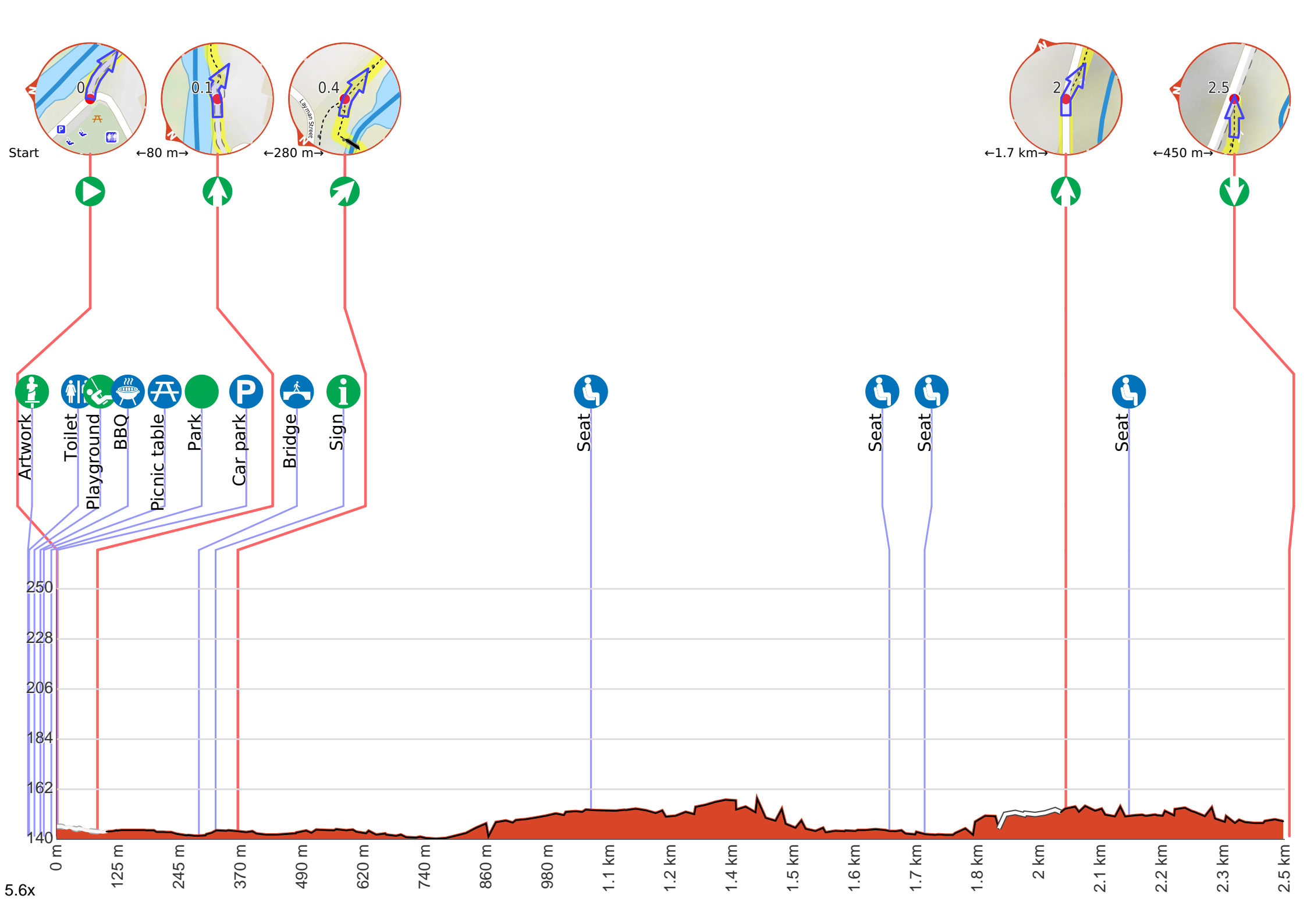


0

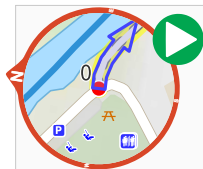
0.5

1 km





Getting started: From the Blackwood River Park car park, head towards the black bollard with an orange circle on top of it as you keep the river to your left. Pass between the bollard and the rocks/boulders then head along the singular dirt trail. Follow the said trail (keeping the river to your left) to continue along Blackwood River Trail.



Start.



In, On and Along (about 60 m back from the start).



There is a toilet (about 55 m back from the start).
This toilet is wheelchair accessible.



There is a playground (about 45 m back from the start).



There is a BBQ (about 35 m back from the start).



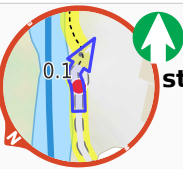
There is a picnic table (about 25 m back from the start).



Blackwood River Park (about 10 m back from the start).



Find the car park at the start.



After another 80 m **continue straight.**



After another 20 m **continue straight.**



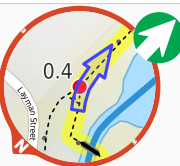
After another 185 m cross the bridge (about 15 m long)



After another 15 m pass the sign (on your left).



After another 30 m **continue straight.**



After another 15 m **veer right.**



After another 700 m pass a seat (9 m on your left).



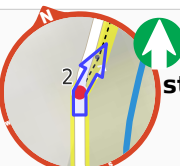
After another 590 m pass a seat (5 m on your left).



After another 70 m pass a seat (5 m on your left).



After another 155 m **continue straight**, to head along West Blackwood Terrace.



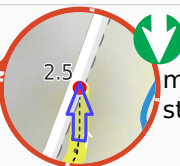
After another 125 m **continue straight.**



After another 125 m pass a seat (on your left).



After another 320 m come to a sign.



Turn around here and retrace the main route for 2.5 km to get back to the start.