



# Ironbark Walking Track

(Wiradjuri Country)

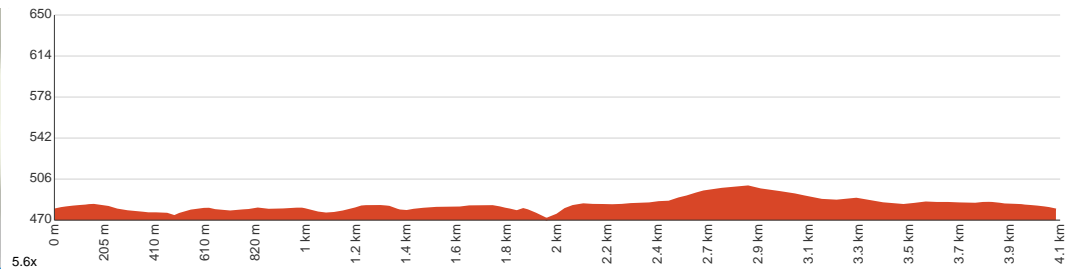
1 h 30 min to 2 h

4.1 km  
Circuit

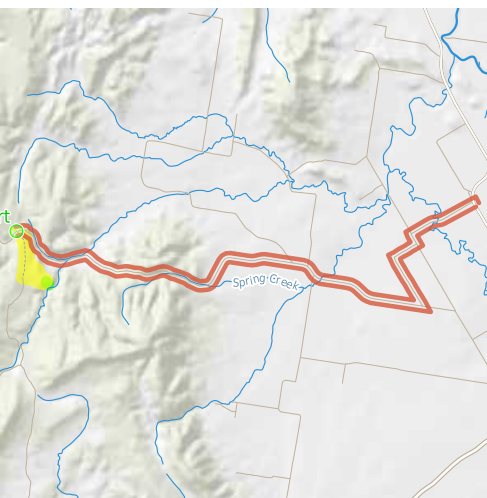
↑ 61 m  
↓ 61 m

4  
Hard track

A short circuit walk in Conimbla National Park that will take you through ironbark, dry eucalypt forests and heathland to a flat plateau with scenic views over Cherry Creek. There are plenty of opportunities for birdwatchers and wildflower lovers. Let us begin by acknowledging the Wiradjuri people, Traditional Custodians of the land on which we travel today, and pay our respects to their Elders past and present.



<b>Class 4 of 6</b> Rough track, where fallen trees and other obstacles are likely	
<b>Quality of track</b>	Rough track, where fallen trees and other obstacles are likely (4/6)
<b>Gradient</b>	Flat, no steps (1/6)
<b>Signage</b>	Minimal directional signs (4/6)
<b>Infrastructure</b>	Limited facilities (such as cliffs not fenced, significant creeks not bridged) (4/6)
<b>Experience Required</b>	No experience required (2/6)
<b>Weather</b>	Forecasted & unexpected storms and severe weather may impact on navigation and safety (4/6)



**Getting to the start:** From Lachlan Valley Way

- Turn on to Morrison Bridge Road then drive for 2 km
- Turn left onto Conimbla Road and drive for another 330 m
- Turn right onto Conimbla Church Lane and drive for another 2.4 km
- Turn right onto Barryrennie Road and drive for another 13.2 km

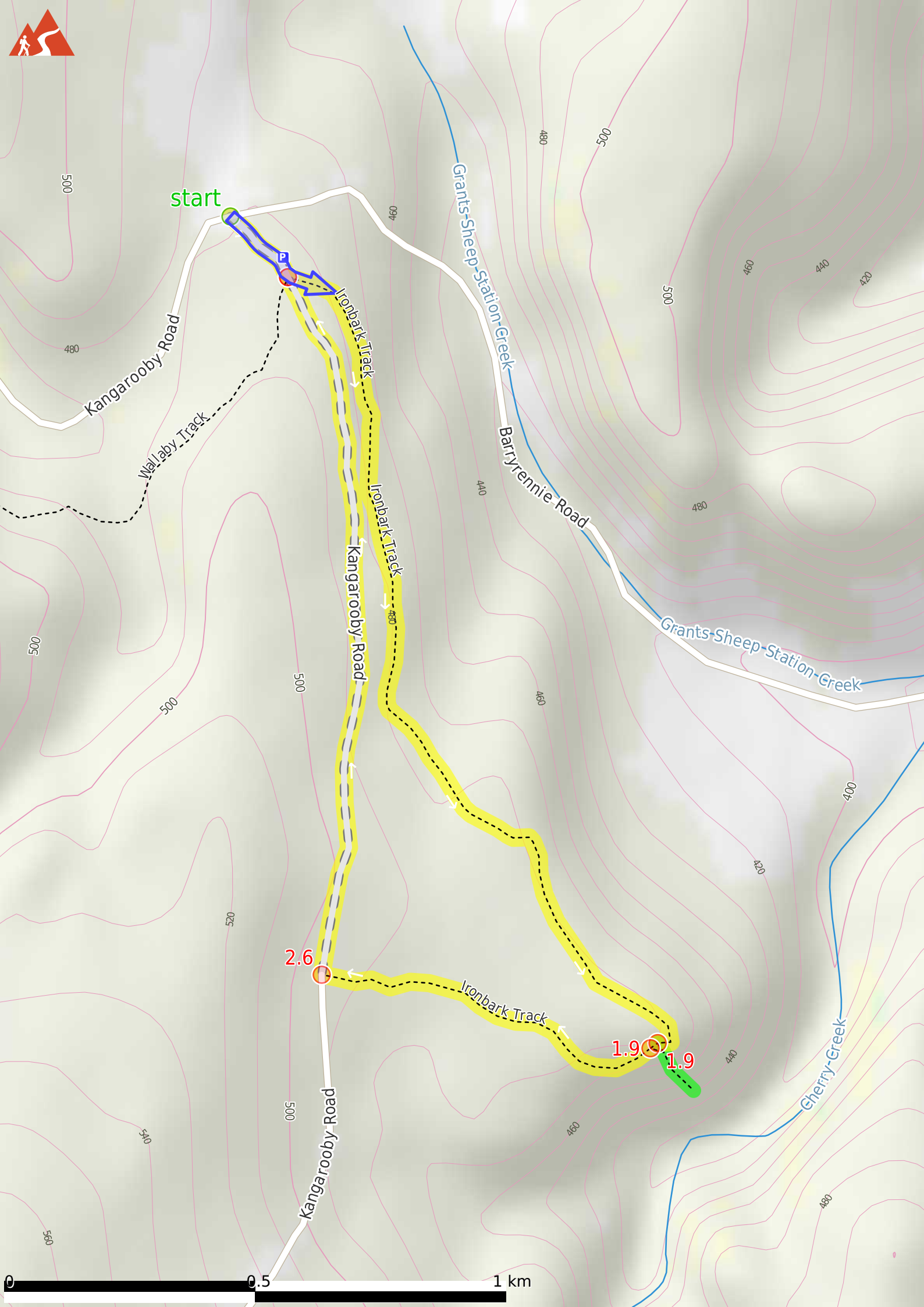
**Before you start any journey ensure you;**

- Tell someone you trust where you are going and what to do if you are late returning
- Have adequate equipment, supplies, skills & knowledge to undertake this journey safely
- Consider weather forecasts, park/track closures & fire dangers
- Can respond to emergencies & call for help at any point
- Are healthy and fit enough for this journey

If not, change plans and stay safe. It is okay to delay and ask people for help.

Share  
Bushwalk.com  
[ij/VAZG5Q](https://www.bushwalk.com/ij/VAZG5Q)





start

2.6

1.9

1.9



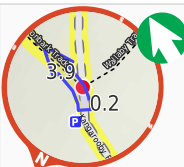




**Start.**

**P** After 185 m pass the "Ironbark Car Park" (10 m on your left).

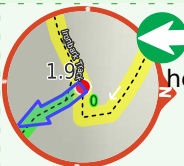
Then head through/around the gate.



**Veer left.**

After another 1.8 km come to the "Cherry Creek Lookout" (115 m on your left).

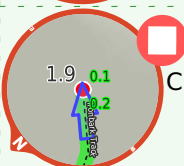
**Start of an optional side trip:** Side trip to Cherry Creek Lookout with views over the creek.



To start this optional side trip turn left here. **Start.**



After another 20 m **continue straight.**

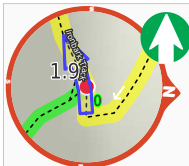


Continue another 90 m to find Cherry Creek Lookout at the end.

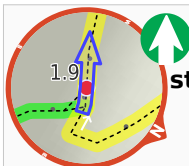
"Cherry Creek Lookout".

Turn around and retrace your steps back the 110 m to the main route.

Back at the main route turn left and follow on from the 1.9 km waypoint.



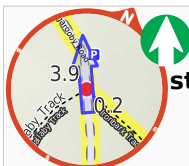
**Continue straight.**



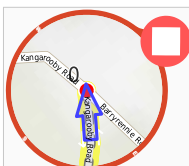
After another 15 m **continue straight.**



After another 720 m **turn right.**



After another 1.3 km **continue straight.**



After another 160 m come to the end.