



# Beehive Falls

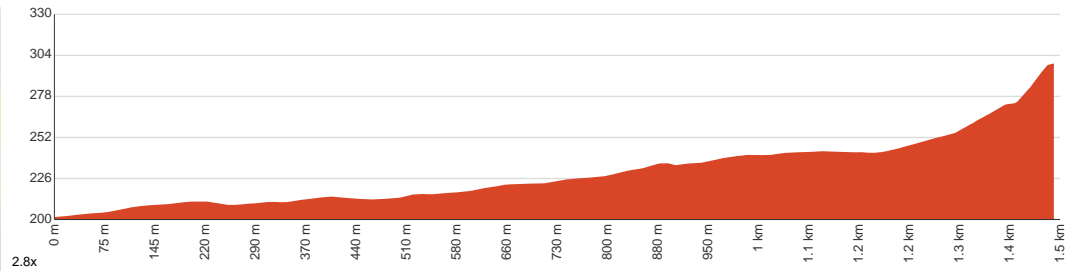
1 h to 1 h 30 min

2.9 km  
Return

↑ 110 m  
↓ 110 m

Moderate track

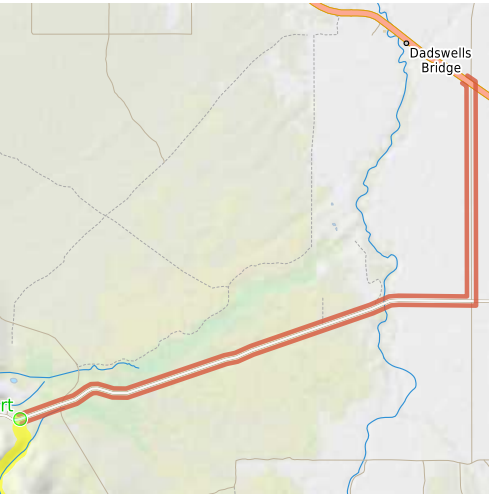
Starting from Beehive Falls Car park, Roses Gap, this return walk takes you to Beehive Falls and back. This walk is relatively easy and suitable for all ages while still offering scenic views from the Mount Difficult Range and one of the most beautiful waterfalls in the area. Reach to the base of the falls, where seasonal rains fill fern-lined rock pools. The walk is on a sandy path, but there are some rock steps near the falls. Additionally, You might want to bring fly repellents with you as well during the summer months. Let us begin by acknowledging the Traditional Custodians of the land on which we travel today, and pay our respects to their Elders past and present.



<b>Class 3 of 6</b> Formed track, with some branches and other obstacles	
<b>Quality of track</b>	Clear and well formed track or trail (2/6)
<b>Gradient</b>	Short steep hills (3/6)
<b>Signage</b>	Clearly signposted (2/6)
<b>Infrastructure</b>	Limited facilities, not all cliffs are fenced (3/6)
<b>Experience Required</b>	No experience required (2/6)
<b>Weather</b>	Storms may impact on navigation and safety (3/6)

**Getting to the start:** From Western Highway, A8, Dadswells Bridge.

- Turn on to Jackmans Road then drive for 3 km
- Turn right onto Roses Gap Road and drive for another 6.5 km



### Before you start any journey ensure you;

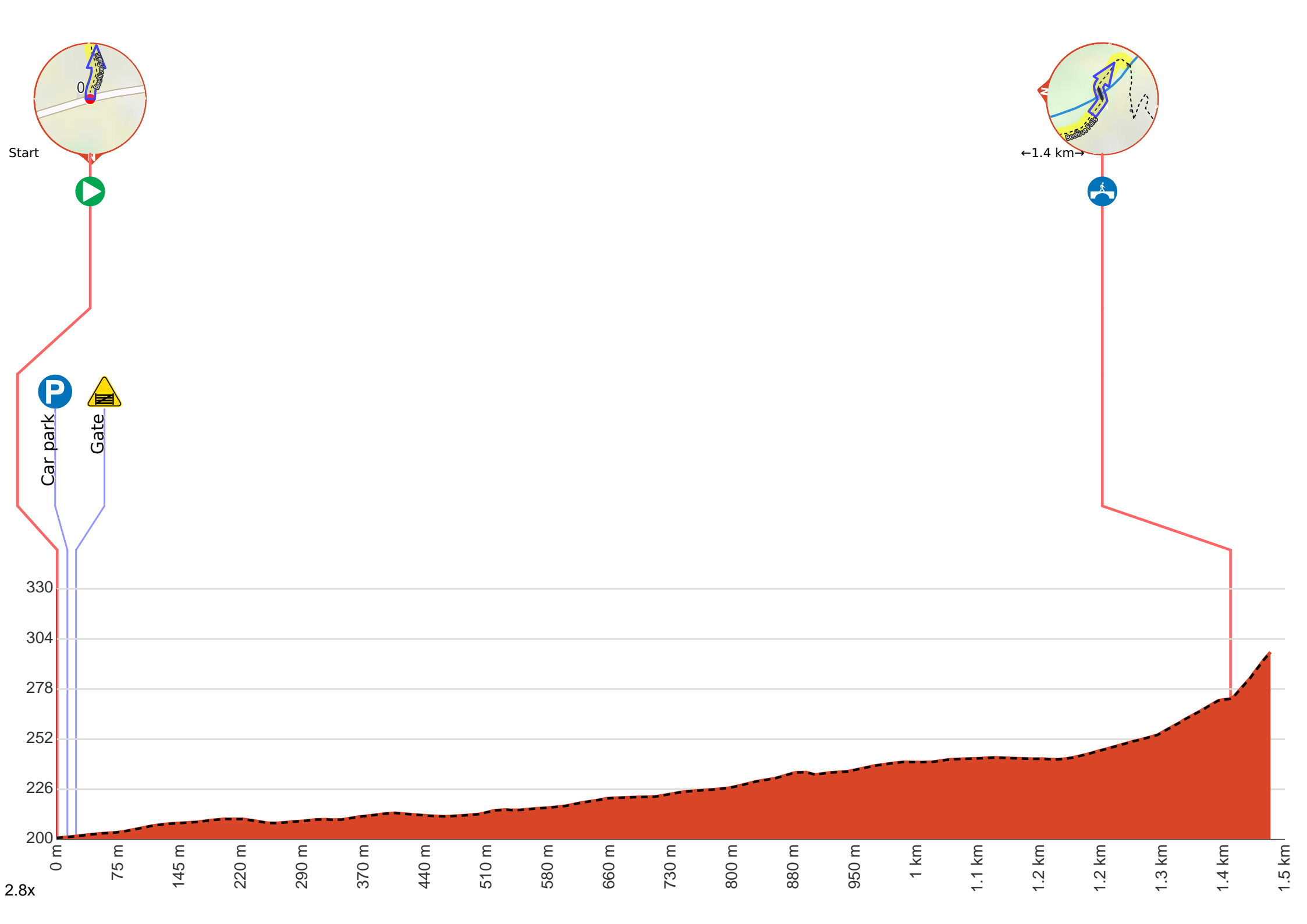
- Tell someone you trust where you are going and what to do if you are late returning
- Have adequate equipment, supplies, skills & knowledge to undertake this journey safely
- Consider weather forecasts, park/track closures & fire dangers
- Can respond to emergencies & call for help at any point
- Are healthy and fit enough for this journey

If not, change plans and stay safe. It is okay to delay and ask people for help.

Share  
Bushwalk.com  
[/i/XDHTPS](https://www.bushwalk.com.au/XDHTPS)







**Getting started:** From the Beehive Falls Carpark, head along the singular dirt trail as you move directly away from the road. Head over/around the gate and stay on the said trail to continue along the Beehive Falls Track.



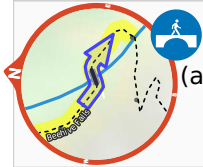
At the intersection of Roses Gap Road & Beehive Falls **Start** heading along *Beehive Falls* (a walking track).



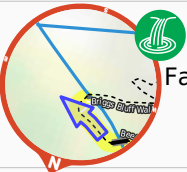
Find the Beehive Falls Carpark at the start.



After another 10 m head through/around the gate.



After another 1.4 km cross the bridge (about 15 m long)



After another 55 m come to "Beehive Falls".



Turn around here and retrace the main route for 1.4 km to get back to the start.