

STADIMETER CHECK ALIGNMENT

MRC B4 PT62 N. Periodicity R-2

Force Revision: 1-23

Overview

Main Tasks	1.0	2.0	3.0	4.0	
Tasks	1.1	2.1	3.1	4.1	4.7
	1.2	2.2	3.2	4.2	4.8
	1.3	2.3	3.3	4.3	4.9
	1.4	2.4	3.4	4.4	4.10
		2.5	3.5	4.5	4.11
		2.6		4.6	4.12
Sub Tasks	1.4.1	2.3.1	3.5.1	4.3.1	
		2.6.1		4.3.2	
		2.6.2		4.3.3	
				4.3.4	
				4.8.1	
				4.8.2	
				4.8.3	
Steps	1.4.1.a.1	2.6.2.1		4.3.4.1	
	1.4.1.b.1			4.8.3.1	
	1.4.1.b.2			4.11.1.1	

Note: This visual aid is supplementary to and does not supersede the MRC.
Maintenance shall not be performed without an MRC present.

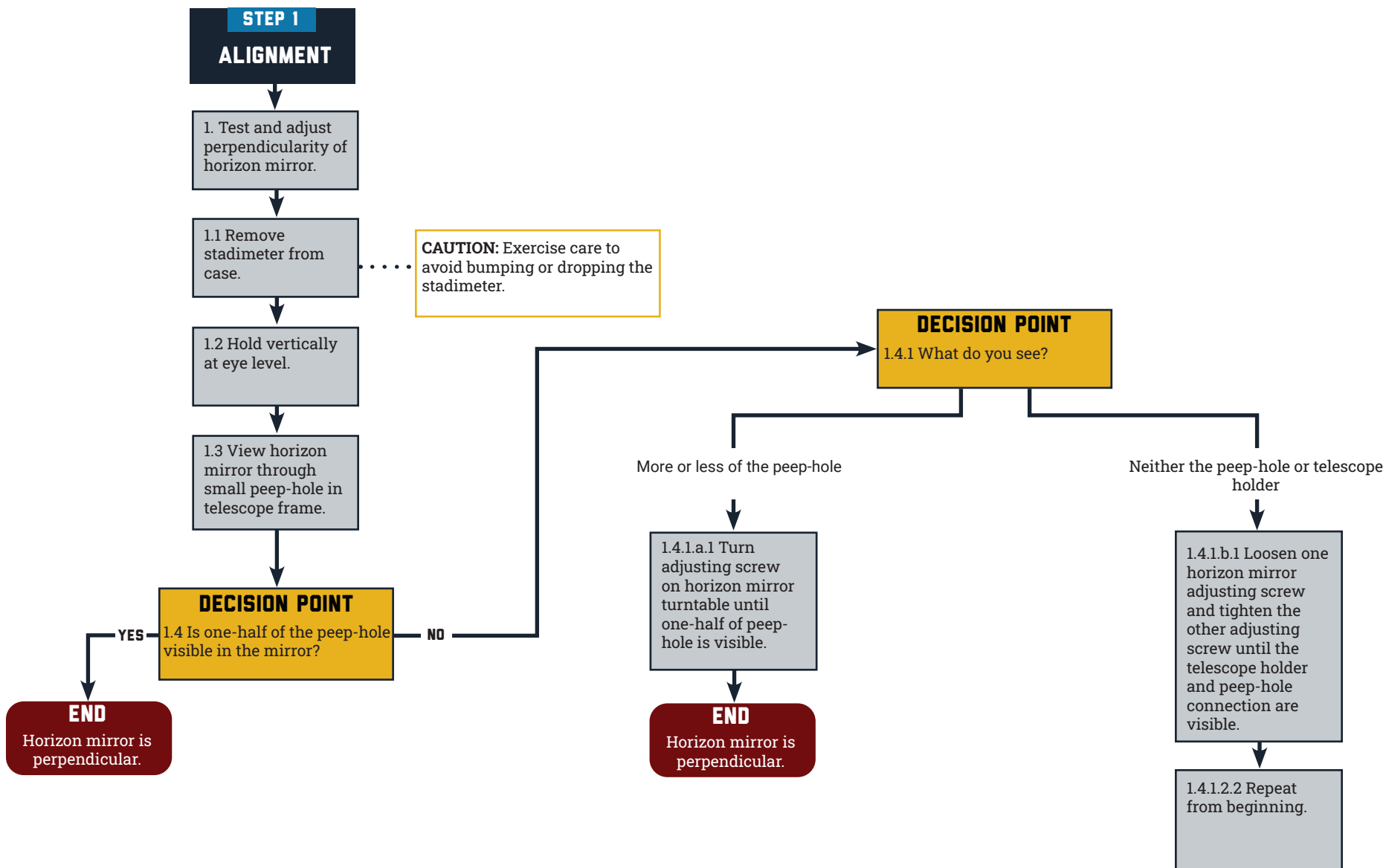
STADIMETER: CHECK ALIGNMENT

CUI



Complete the steps below in order

NOTE: Accomplish this maintenance requirement when any of the following periodicities or situations occur:
A. Prior to deployment



INVENTORY

Screwdriver | Wrench - adjusting screw

U.S. NAVY QUARTERMASTER

CUI

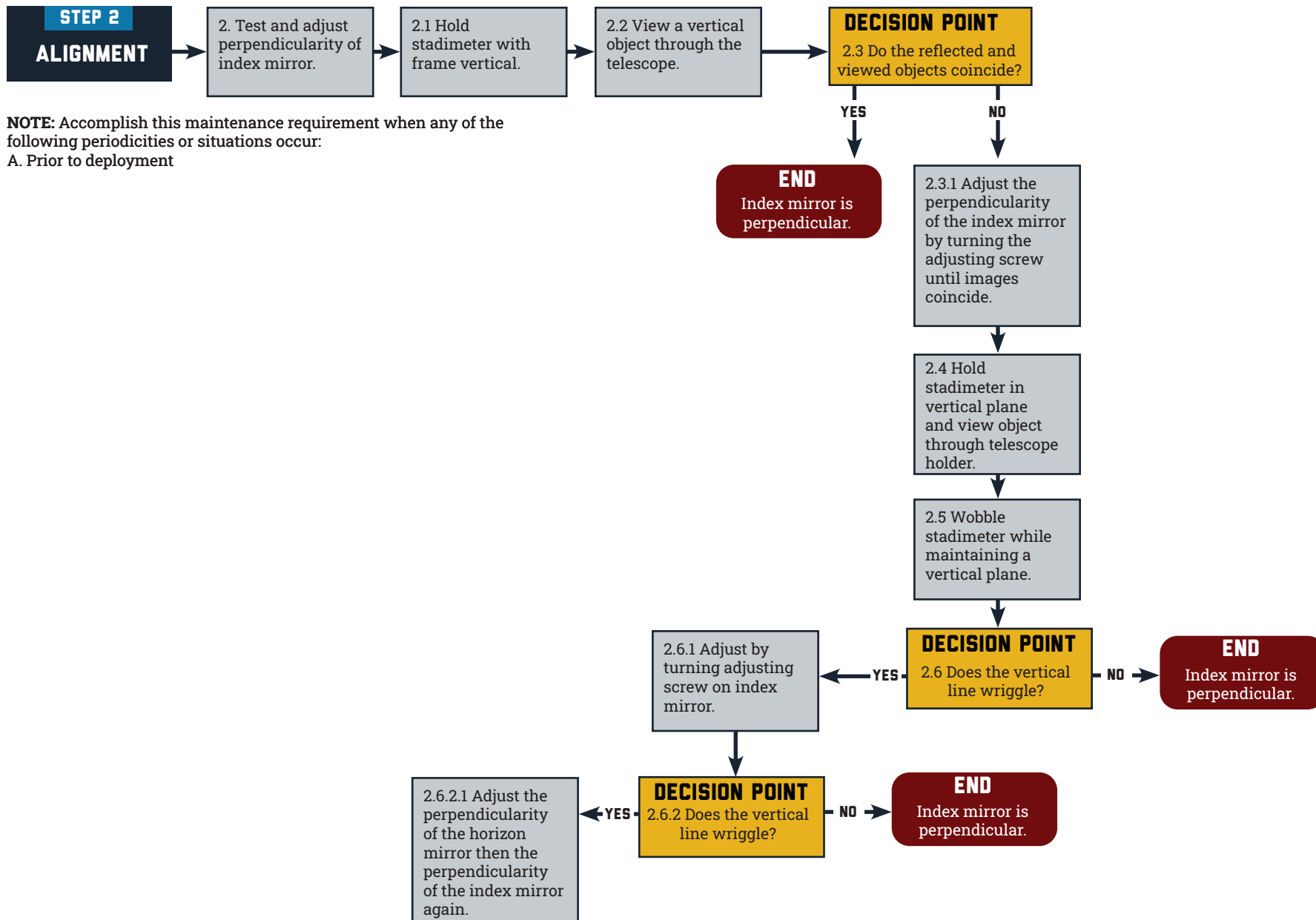


STADIMETER: CHECK ALIGNMENT

CUI



Complete the steps below in order



NOTE: Accomplish this maintenance requirement when any of the following periodicities or situations occur:
A. Prior to deployment

INVENTORY

Screwdriver | Wrench - adjusting screw

U.S. NAVY QUARTERMASTER

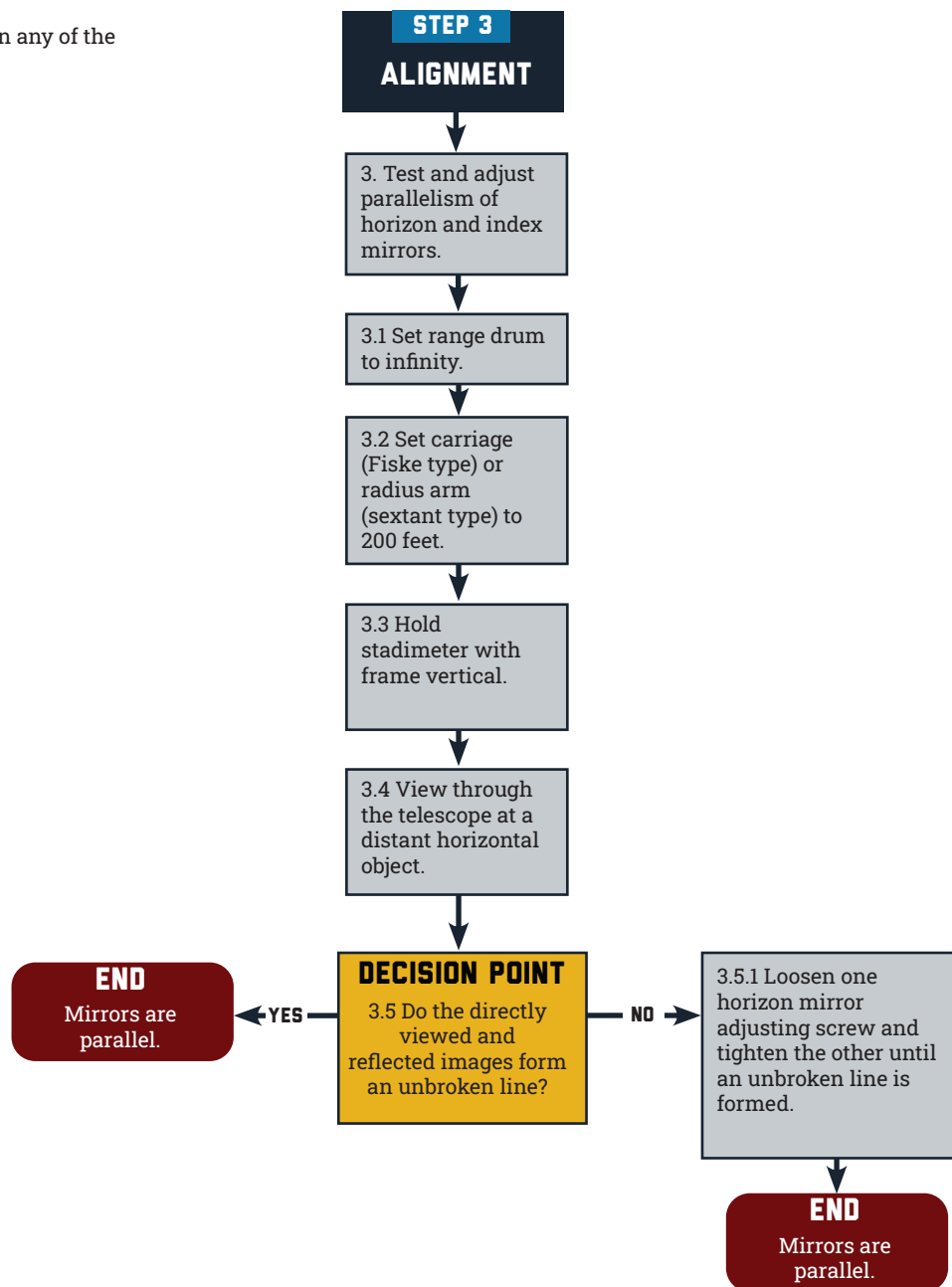
CUI



Complete the steps below in order

NOTE: Accomplish this maintenance requirement when any of the following periodicities or situations occur:

A. Prior to deployment

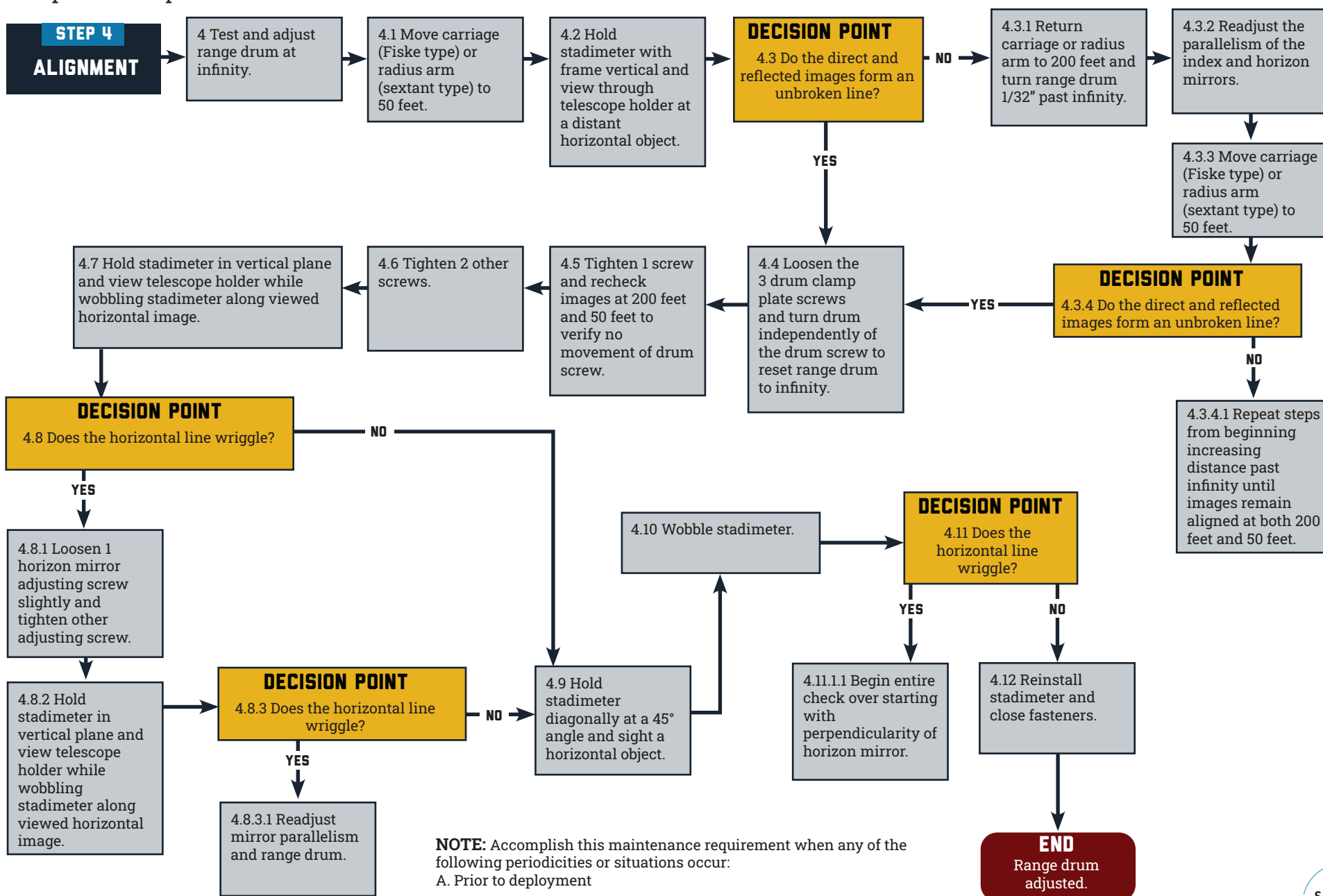


STADIMETER: CHECK ALIGNMENT

CUI



Complete the steps below in order



INVENTORY

Screwdriver | Wrench - adjusting screw

U.S. NAVY QUARTERMASTER

CUI

