

Acting as Agent/Manager for and in name of Offshore Support Vessel 1 B.V.



OFFSHORE BEAVER

DIVING SUPPORT / MULTI PURPOSE VESSEL

MAIN PARTICULARS

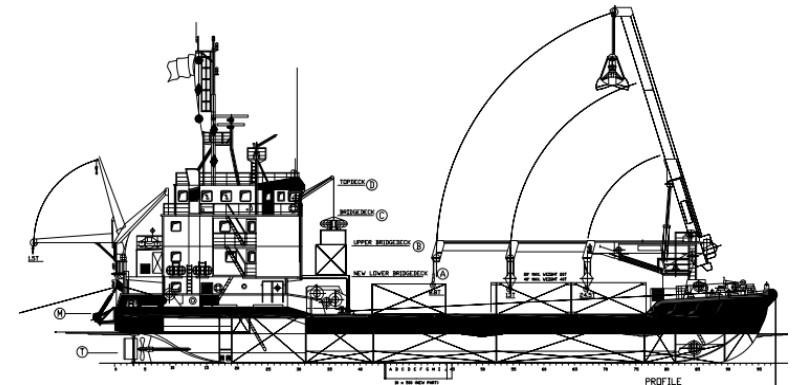
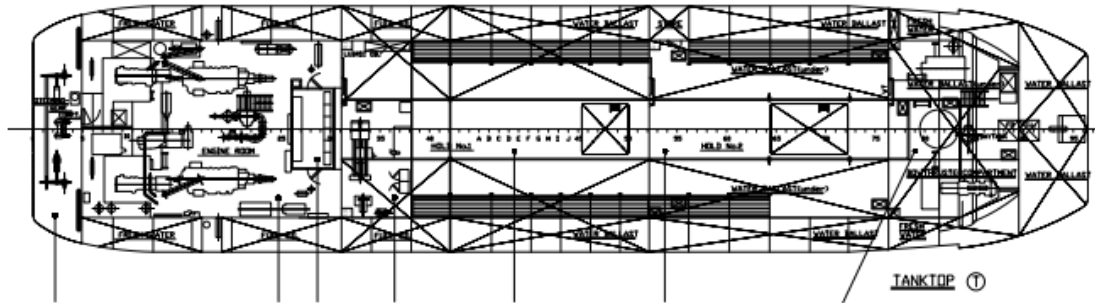
Class	Bureau Veritas (BV)
Notation	Special Service Salvage Boat
Built	Fulton Marine, Belgium 1991
Rebuilt – Refitted	2001
Flag	Dutch
Home port	Rotterdam
IMO	8918564
Length o.a.	56.65m
Length p.p.	50.95m
Breadth mld.	12.50m
Depth main deck	4.00m
Design draught	2.50m
Maximum draught	2.69m
Net tonnage	256.00T
Gross tonnage	856.00T
Light oper. weight	915.40T
Max. displacement	1438.72m3
Deadweight	559.29T



OFFSHORE BEAVER

DIVING SUPPORT / MULTI PURPOSE VESSEL

Technical Data



LIFTING EQUIPMENT

Deck crane (overhauled 2015)	1 MARLIFT telescopic crane on fwd main deck at CL, hydraulically driven.
Capacity	8.8tonnes @19.40m / 13.0tonnes@13.40m/24.5tonnes @7.40m; with 2m ³ grab.
Service crane	1 ACTA boat/general crane on aft deck, hydraulically driven.
Capacity	1.5tonnes @7.00m

TANK/CARGO DATA

Ballast water	272m ³
Fresh water	125m ³
Fuel oil	197m ³
Lub oil	2m ³
Used oil	1.2m ³
Slops	288m ³
Deck area (30x12.5m)	375m ²
Max. deck load	5t/m ² on deck & 2t/m ² on hatches
Fuel consumptions	0.5 – 0.7cbm / day in port; 4-5cbm/ day at full speed
Fuel	MDO DMA

PERFORMANCE

Max speed	10kn
-----------	------

PROPULSION & POWER

Type	2x CATERPILLAR 3508 STD
Power	2x 675kW@ 1600 rpm, running on gas oil, driving 2 main propellers Ps: 286kW, Sb: 176 kW
Generator Sets	
Propulsion	2x LIPS 4 bladed FPP; Diam 1800mm
Rudders	2x
Bow thruster	1x 3 bladed FPP Hydraulic Power Unit Caterpillar 3406B - 135KW
Electricity Deck	220V – 50Hz and 380V – 50Hz; 1 Harbour /emergency gen set 63kW

DECK EQUIPMENT

Mooring winches	4x 15t BP / 3t anchors;
Salvages winches	2x 25t BP waterfall type
Bow rollers	2x max. load 100tonnes

OIL SPILL RECOVERY EQUIPMENT

LORI System	300m ³ storage capacity
-------------	------------------------------------

ACCOMMODATION

POB	20 (9 crew+11 pax)/ max. 36 with TLQs
Cabins	4 single, 4 double, 3x4-berth
TLQ cabins (optional)	4-6 double
Other rooms	Mess, Smoking/day, Laundry and Wash/change rooms.

PUMPING EQUIPMENT

Ballast pump	1x NIJHUIS hydraulically driven pump
Capacity	150m ³ /hr @3 bar
Service pump	1x STORK electrical pump
Capacity	61m ³ /hr @2 bar/50m ³ /hr @5 bar
FiFi pump	1x NIJHUIS hydraulically drive.
Capacity	600m ³ /hr @15 bar

NAVIGATION & COMMUNICATION EQUIPMENT

GMDSS (A2) installation (2 X-band radio, 1 DGPS navigator, 1 GPS navigator, 1 Gyro compass system, 1 Autopilot, 2 Echo sounder, 1 AIS, 1 SATCOM C, 1 EPIRB, 2 SART, 1 NAVTEX receiver, 1 VHF/HF/MF system with DSC and portables, 1 combined intercom-/loudhailer system and 1 sound powered telephone system), V-Sat, FBB as backup.

SUITABLE FOR

Diving support at Offshore Wind Farms, salvage, cable laying support incl. plough, UXO recovery, shallow water support works (able to go dry on seabed), amongst others.