



USER MANUAL

Vanity TV Mirror

MODEL NUMBER

19.6
27.6

WARRANTY REGISTRATION

**REGISTER FOR
EXTRA BENEFITS**

Activate within 30 days of purchase:
seura.com/activate

WWW.SEURA.COM

Thank you for selecting a Séura TV Mirror.

This product has been inspected and packaged carefully before shipment.

Please read this guide before beginning installation.

Please keep this manual for future reference.

Information in this manual is subject to change without prior notice.

FCC Information

This equipment has been tested and found to comply with limits for a class B digital device, pursuant to Part 15 of the FCC Rules. These limits are designed to provide reasonable protection against harmful interference in a residential installation.

This equipment generates, uses, and radiates radio frequency energy and, if not installed and used in accordance with the instructions, may cause harmful interference to radio communications.

There is no guarantee that interference will not occur in a particular installation. If this equipment causes unacceptable interference to radio and television reception, which can be determined by turning the equipment off and on, the user is encouraged to try to correct the interference by one or more of the following measures.

- Reorient or relocate the receiving antenna.
- Increase the separation between the equipment and receiver.
- Connect the equipment into an outlet on a circuit different from that to which the receiver is connected.

Consult the dealer or an experienced Radio/TV technician for additional help.



WARNINGS

To reduce the risk of fire, electrical shock and other injuries, keep these safety precautions in mind when installing, using, and maintaining your TV Mirror. The socket-outlet should be installed near the equipment and be easily accessible. The TV should be connected to a grounded GFCI protected main socket outlet.

WARNING: If you manipulate against the recommended usage, serious injury or death to user may result.

To protect against electric shock, do not immerse the power cord, power plug, or product in water or other liquid.

Do not overload AC outlets or extension cords. Overloading can cause fire or electric shock.

Close adult supervision is necessary when any product is used by or near children.

Do not operate any product with a damaged cord or plug or operate it after the appliance malfunctions or has been damaged in any manner.

Do not use the product close to any heat sources such as radiators, heat registers, stoves, or other products that produce heat.

Do not let the power cord come in contact with hot surfaces.

If you notice any smoke or scorched smell near the product, unplug power cord and refer to qualified personnel for service and/or repair.

Do not use or place any combustible or flammable substances near the product.

To electrically disconnect the product, turn OFF the product, then remove the electrical power plug from the outlet.

Do not place heavy articles on or step on the product.

Do not place the product on an unstable cart, stand, tripod or table.

Do not use this product for other than intended use.

This Séura product is only intended for use indoors.

This product is not waterproof. Do not immerse this product in water and/or expose to dripping or splashing water.

For added safety during a lightning storm, or when this product is left unattended and unused for long periods of time, unplug it from the wall outlet and disconnect the antenna.

Specifications of this product are subject to unannounced changes; this manual may thus not reflect the current technical status.



WARNING: READ ALL INSTRUCTIONS AND REVIEW ALL DRAWING SHEETS BEFORE ATTEMPTING TO INSTALL OR SERVICE THIS PRODUCT.

When installing and during use of this product, basic safety precautions should always be followed to reduce the risk of fire, electric shock and/or injury to persons including the following:

- Inspect the desired location for installation and be aware of all electrical wiring pathways, water pipes, gas lines, or other potentially hazardous conditions that may exist to protect from accidental damage during creation of on-site conditions.
- Ensure all required electrical specifications are adhered to and have been installed by the appropriate individuals and are code approved.
- Ensure all framing requirements, if needed, have been completed to building code and pose no structural issues.
- It is REQUIRED that this product is plugged into an electrical outlet protected by a Ground Fault Circuit Interrupter (GFCI) to protect against electric shock, fire, and/or injury. Failure to do so will void any warranty for this product.
- Only qualified individuals should attempt to service the product. Removing covers can expose you to high voltage and other dangerous conditions.
- To protect against electric shock, do not immerse the power cord, power plug, or product in water or other liquid.
- Do not overload AC outlets or extension cords. Overloading can cause fire or electric shock.
- Close adult supervision is necessary when any product is used by or near children.
- Do not operate any product with a damaged cord or plug or operate it after the appliance malfunctions or has been damaged in any manner.
- Do not let the power cord come in contact with hot surfaces.
- To electrically disconnect the product, turn OFF the product, then remove the electrical power plug from the outlet.
- Do not use this product for other than intended use.
- This Séura product is only intended for use indoors.
- This Séura product is not waterproof. Do not immerse this product in water and/or expose to dripping or splashing water as this could cause an electrical hazard.
- Retain this manual in a safe place for future reference.



WARNINGS:

Do not handle or remove your TV Mirror from the packaging until it is ready to be installed.

To avoid damage to the TV Mirror, only transport it in a vertical position. Transporting the product horizontally may permanently warp the mirror.

It is highly recommended that at least three (3) persons assist in the installation of the TV Mirror.

Lighting and Performance

The environment in which the TV Mirror is installed will affect the product performance. The key factors to consider for proper installation are surroundings and ambient light. Use the following guidelines to maximize the performance of the Séura product:

Type of Lighting

Avoid direct natural sunlight and excessive fluorescent lighting. These conditions will diminish the TV brightness and hinder its performance.

Light Direction

Avoid directing light toward the mirror. Position lights such that they illuminate objects in the room, not the mirror itself. For example, lights on the wall next to the mirror are more favorable than lighting located on the ceiling in the center of the room.

Background Colors

Sidewalls and furnishings that are dark, uniform, and non-reflective will provide better performance of the display. Bright colors, patterns, and contrasting colors will minimize the quality of the display.



DO use ambient or indirect lighting that illuminates the room, not the TV Mirror.



DO use shades or window treatments to block outdoor light that would interfere with picture performance.



DO NOT position lighting directly on the TV Mirror. This will wash out the picture and hinder the product's performance.



DO NOT position the product opposite bright, untreated windows. Natural lighting will interfere with picture performance.

Care and Maintenance

Our mirror technology has been developed to completely protect the mirror surface and allow easy maintenance. Please follow the guidelines listed for proper mirror care and cleaning:

- The glass surface can be cleaned with any conventional non-ammoniated glass cleaner. Care should be taken to use only a soft lint-free cloth. Apply all cleaners directly to the cloth and not the mirror surface. Never saturate the mirror surface as residual cleaner may seep behind the mirror.
- Stubborn spots can be removed with solvents such as mineral spirits, de-natured alcohol, and acetone. Immediately remove solvent and dirt residues per the prescribed methods above with a compatible glass cleaner or water.

Lighted TV Mirror

Séura Lighted TV Mirrors use LEDs that are rated to retain 70% overall brightness and the end of life, including cases where an individual LED fails.



Display Requirements

Operation and Storage Requirements

The ambient temperature for operating the device is between 41° to 104° Fahrenheit. Do not install the device in the proximity of heat sources, such as heating pipes, heaters, furnaces or other devices that radiate heat. Mount the device in such a way that it is protected against moisture. To prevent fire or electric shock, never allow liquids to enter the unit. The product must be stored in dry and well-ventilated rooms, without extreme temperature fluctuations. Heat sources and aggressive active substances may not be stored in the proximity of the device. The required storage temperature is 32° F - 140° F at an air humidity of 5 - 85% RH non-condensing. The device must be stored in the complete packaging, as delivered. The product must not operate on average more than twelve (12) hours per day on a permanent or extended periodic basis. The product must have proper, correct and sufficient AC supply voltage.

Installation Environment

Avoid direct light or sun exposure, direct proximity to heat sources, and outdoor installation. The product is specifically designed for indoor use only. There is the danger of fire and of electric shock and damage to the device if it is operated outdoors. Do not place any heat sources such as radiators and heat registers, etc. near the monitor. To reduce eye strain, avoid installing the Séura TV Mirror against a bright background such as a window. Position the monitor at the height of your eye level. Position the monitor directly in front of you at a comfortable viewing distance.

Installation

Have this product installed by qualified personnel only. Use the mounting systems which are specified or recommended by Séura. Install the product in a way that it is fixed properly and take care that children are not exposed to danger. Please take extra care during installation, avoid impacts. Before cabling your monitor, check that the power is off. To avoid any possibility of electric shock, always connect your equipment to properly grounded outlets. Use of power cords or adapters other than those provided may cause fire or malfunction. Place this product as close to the power socket as possible. Leave enough space to insert and remove the power plug on demand. Even if you switch off the product with your remote control, power is not cut off unless the power cord is unplugged.

The device may only be operated with the provided power adapter. The rated voltage is indicated on the product label. Use only power cords and plugs that are suitable for your local electrical outlets. Install the power cords in such a way that it does not obstruct anyone. Ensure furthermore that the cable is not clamped and that it cannot be pulled out accidentally from the power adapter. Do not install the power cords in the proximity of heating elements and never place heavy items on the cable or power adapter. Do not modify or arbitrarily repair the power cords.

CAUTION

Do not use any power cords or adapters other than those provided with this product! Use of power cords or adapters other than those provided with this product may cause fire, electric shock or malfunction. If several kinds of power cords are provided with this product, use the one that fits your power socket. Do not let the adapter hang down while using. Do not cover or wrap the adapter. Leave space around the adapter to prevent overheating. The individual components can be destroyed, if the polarity is reversed or an incorrect connection is used. A goodwill replacement is not possible in such cases, since each device is submitted to meticulous quality inspections prior to shipping. The connecting plugs must be attached in such a way that the connector is held firmly. Have trained technical personnel install the electrical facilities necessary for mounting. The power adapter must be installed in ventilated areas due to heat emission. Connect the power cord to a grounded outlet. Never cut or damage the power cord.

Please disconnect the device from the power adapter in the following cases:

1. The device is out of use for a lengthy period.
2. The device malfunctions or displays other unusual features, necessitating maintenance work.
3. During a thunderstorm.

Please plan the positioning of the power adapter and the source cables before proceeding with the structural measures and positioning of the Séura TV Mirror. Observe the protection zones when placing the power adapter! For in-wall applications please bear in mind that the power adapter has to be placed beyond the inset due to heat emission. Optional 50' adapter extension cables may be purchased from Séura.

NOTE

The power adapter should be adequately secured to prevent it from becoming unstable and/or falling. Make sure the power source circuits are properly grounded. Use the supplied power cord in order to connect it to the power source. If your installation requires a different power cord, be sure to use an officially approved power cord displaying the mark of the safety agency that defines the regulations for power cords in your country. Please consider that the AC outlet for the power adapter is placed within reach of the Séura TV Mirror and should be easily accessible in case it needs to be powered off.

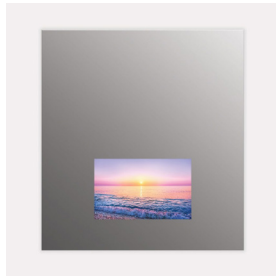
Install the unit in a dry environment where the operating ambient temperature will not exceed 40°C / 104°F. Also, don't position the power adapter on top of the Séura monitor system in order to prevent thermal overload. Ensure that your installation complies with your national and local safety rules. Any servicing, adjustment, maintenance or repair must be performed only by service-trained personnel.

Ensure the power adapter is installed in an accessible location, to access it easily in case of a defect. If you choose to place the power adapter in a separate space, take care that ventilation is present, because the power adapters need convection cooling for stable working conditions.

When placing the power adapter in a fully enclosed space, make sure the air flow around the sides and top of the power adapter is not restricted. According to a common rule of thumb please calculate the length of the power adapter plus an additional gap of at least 3" (75mm) all around for DC 19V power adapters.

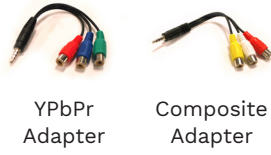
Setup

Before using the device please check the following contents of the box for completeness:



TV Mirror
with 5-foot Power Cable

Power Supply: 4.75" x 2" x 1"



YPbPr
Adapter

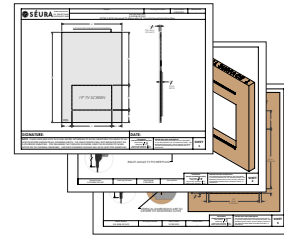
Composite
Adapter



RS-232
Adapter



IR Remote
Control

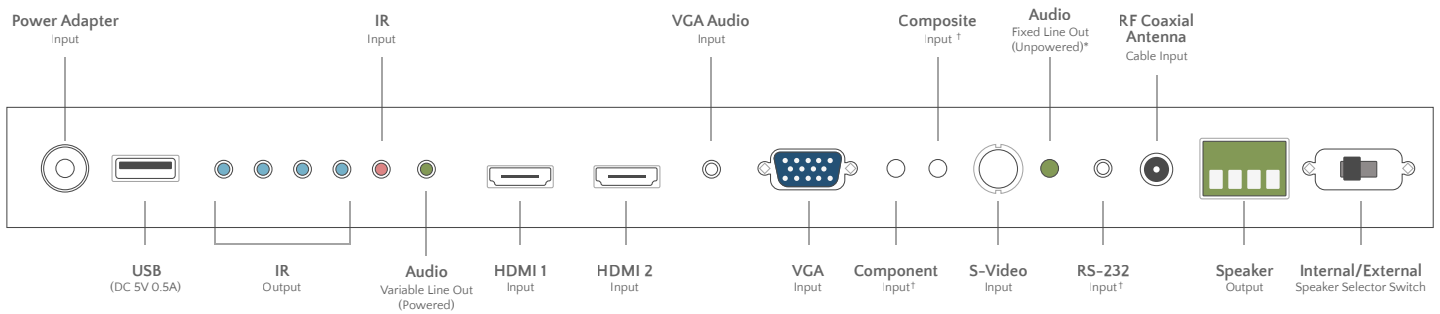


Drawing Package with
Installation Instructions



Mounting
Hardware

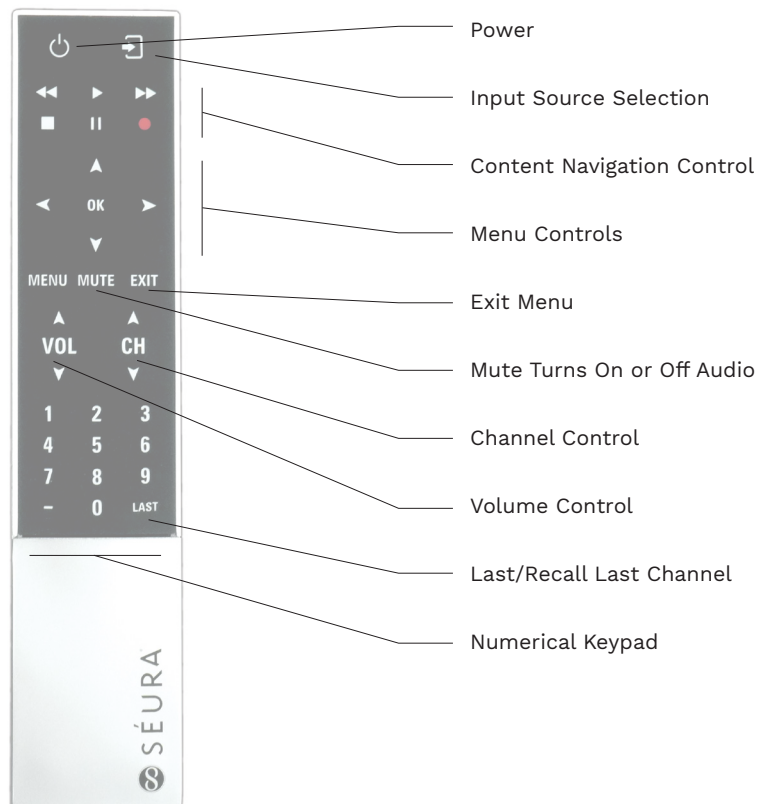
Connections



* The unpowered audio variable line out will cut audio from the speaker output.

† Mini jack connection on TV, product includes adapter cables

Remote Functions



Refer to the included custom drawing package for specific dimensions and instructions for your custom product.

1. Verify that the wall is prepared appropriately. If the product is an in-wall, or “Recessed” configuration, verify the dimensions of the rough opening.
2. Install mounting brackets according to the dimensions and instructions shown on “Sheet 3” of the included drawing package. Ensure mounting brackets are securely fastened using wood framing members where possible.

NOTE: Take care when moving the product. Always transport the product with at least two people.

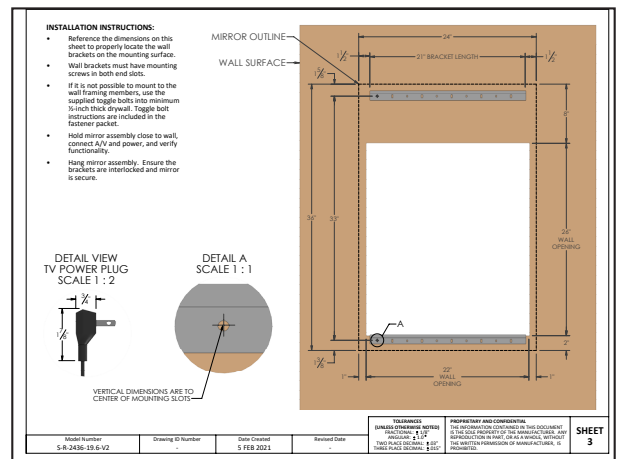
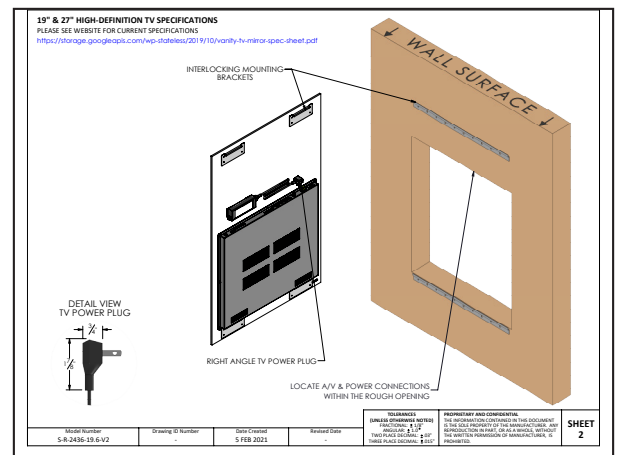
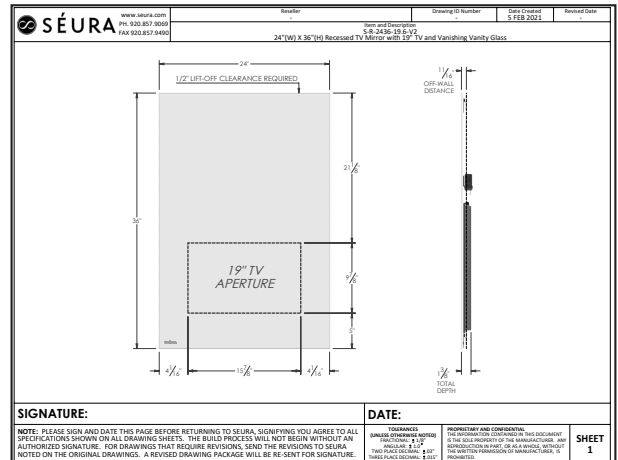
WARNING: Always transport the product in a vertical position. Moving the product in an unsupported horizontal position may result in product flex or damage.

3. Connect power supplies and audio/video components.
 - Testing all electrical and electronic devices to verify proper integration and functionality before securely mounting it to the wall is strongly recommended.

4. Position TV Mirror close to wall surface and securely engage mounting brackets.
 - Allow for a 1/4" ventilation gap for proper air flow and heat transfer.

5. Check to ensure the TV Mirror is fully engaged and secure to the mounting brackets.

6. Reference the appropriate electronics manual for TV Mirror operating instructions.



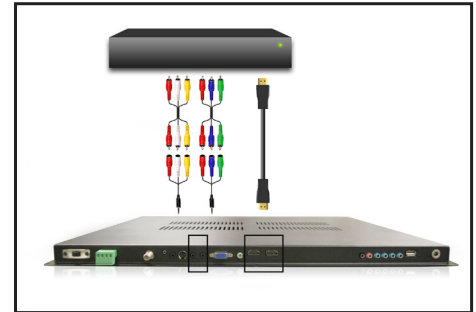
NOTE:

All Séura drawing packages indicate generalized nominal residential wood framing construction, and are not indicative of any particular building code. It is the installers responsibility that all electrical, audio/visual, and framing construction are code compliant to the municipality in which the product is being installed. Modifications made to Séura recommendations are at the sole discretion of the installer and release Séura of all liability.

Making Connections

Connecting Video

The TV Mirror features one Component, one Composite, one VGA, and two HDMI inputs. We recommend using the HDMI inputs for best video and sound quality.



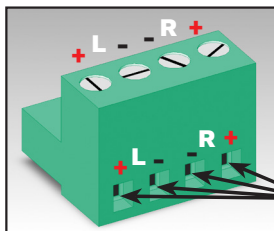
Connecting Audio

Two passive loudspeakers can be connected to the speaker output socket with speaker cables. Observe the polarity (+ and -) of the connections to avoid phase errors (= incorrect stereo playback).

Switch the audio selector switch on the TV to External.

Warning: When changing the audio from internal to external speakers, power-off the unit completely.

Euroblock Connector



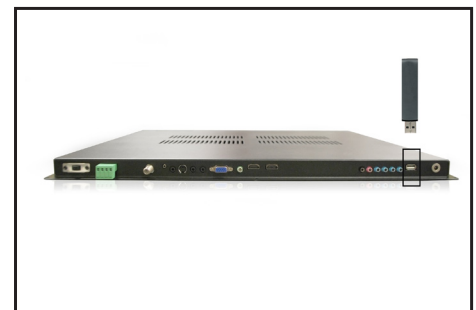
Speaker Wire Input



Connecting a USB Media Source

Connect an external USB media source to the USB socket to display photos, play music or install a software update.

In order to have access to the USB port after installation we recommend installing a USB extension cable.



Connecting a Home Automation System

With the RS-232 interface (9 pin d-subminiature connector female) you can connect a serial cable for communication with a home automation system, PC, etc. The baud rate is 115200.

Visit www.seura.com for control documentation.



On Screen Display Menu (OSD)




On Screen Display Menu (OSD)

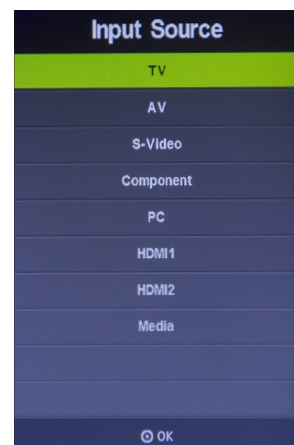
In the on screen display menu (OSD) you can adapt the characteristics of your display based on personal preferences. OSD menus include **Channel, Picture, Sound, Time, Setup, and Lock.**

1. Press **"MENU"** on your remote control to open the OSD menu
2. Navigate within the OSD with the left/right and up/down arrows
3. Change settings with the left/right arrows
4. Go back one step with **"MENU"**
5. Confirm selection with the OK button
6. Press **"EXIT"** to exit the OSD menu.

Input Source Selection

In the Input Source menu, you may select from the available input sources.

1. Press  to power the TV Mirror on
2. Press  to display the Input Source list OR use the quick input controls on the remote to directly designate the input source.
3. Press the up or down arrows until the desired Input Source is highlighted.
4. Press OK to confirm selection of the chosen input and clear the Input Source list from the screen or press  again to switch through the signal inputs.
5. Press **"EXIT"** to close the Input Source list without selecting an alternative source.



Channel Settings

The Channel Settings menu offers options to set up and adjust preferences using the built-in television tuner.

Adjustment options include:

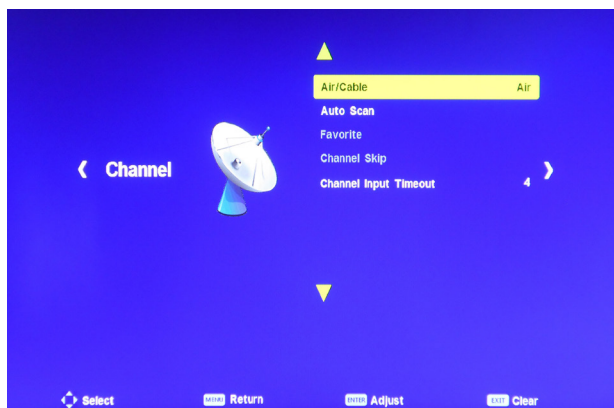
Air/Cable

Auto Scan

Favorite

Channel Skip

Channel Input Timeout



AIR/CABLE

Select the option for obtaining television programming: **Air, Cable**

AUTO SCAN

Select Auto Scan to begin automatic scanning of channels. This process takes a few minutes and depends on program availability.

FAVORITE

Designates favorite channels.

CHANNEL SKIP

Designate preferences for skipping channels.

CHANNEL INPUT TIMEOUT

Designates how long a channel with no signal will remain on before it switches to the next channel.

OSD (cont.)

Picture Settings

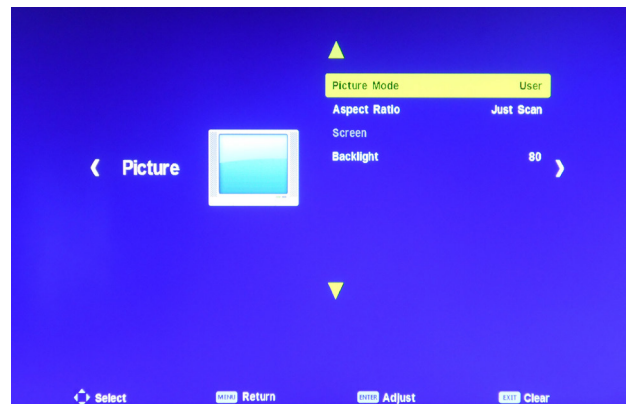
The Picture Settings menu offers options to enhance and refine the image characteristics of your Séura TV Mirror. These settings are based on ambient conditions of illumination and personal preferences.

Adjustment options include:

Picture Mode

Aspect Ratio

Backlight



PICTURE MODE

Within the **Picture Mode** menu you can change the following settings:

Contrast

Brightness

Color

Sharpness

Tint

As well as change between several picture presets: **Vivid, Standard, Soft**

The **Standard** setting is recommended for most viewing environments. Select the **User Mode** to adjust your preferred settings manually.

ASPECT RATIO

Within the **Aspect Ratio** menu you can change to the following aspect ratios: **Auto, 4:3, 16:9, Zoom1, Zoom2, Just Scan, Panorama**

The **Auto** setting is recommended for most viewing environments.

BACKLIGHT

Adjusts the **Backlight** brightness of the display.

Sound Settings

The Sound Settings menu offers options to enhance and refine the sound characteristics of your Séura TV Mirror based on personal preferences.

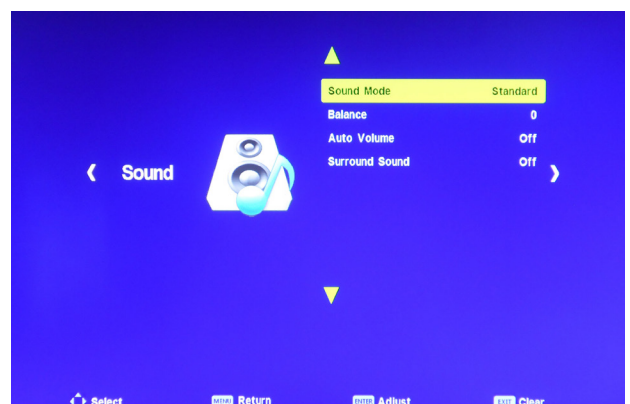
Adjustment options include:

Sound Mode

Balance

Auto Volume

Surround Sound

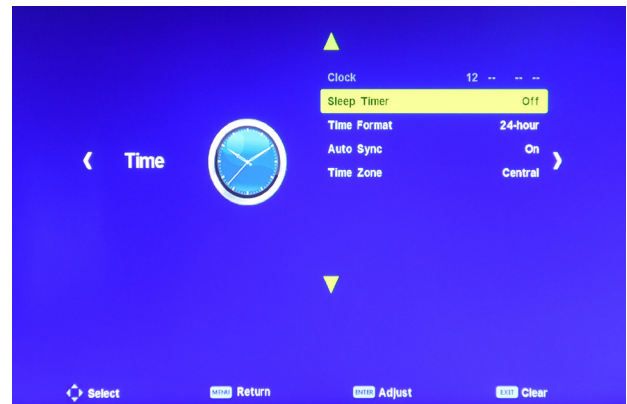


Time Menu

The Time Menu offers options to set the time of your device.

Adjustment options include:

- Clock**
- Sleep Timer**
- Time Format**
- Auto Sync**
- Time Zone**

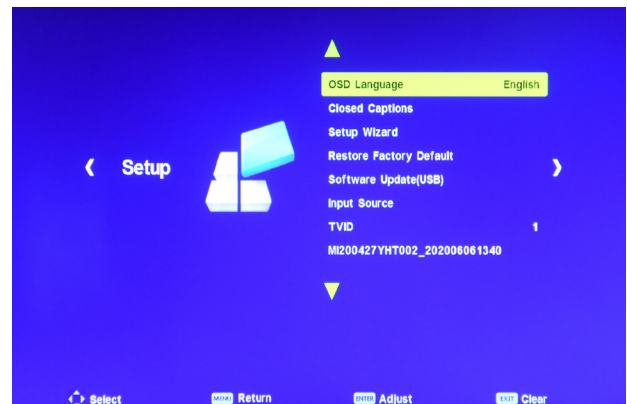


Setup Menu

The Setup Menu offers options to determine fundamental settings of your Séura TV Mirror based on personal preferences.

Adjustment options include:

- OSD Language**
- Closed Captions**
- Setup Wizard**
- Restore Factory Default**
- Software Update(USB)**
- Input Source**
- TVID**



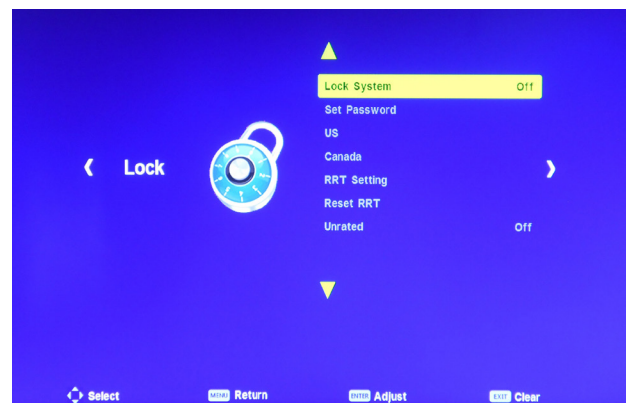
Lock Menu

The Lock Menu offers options to restrict program viewing based on various national rating systems.

To access the menu, enter the 4-digit Password using the keypad on the remote. **The factory default password is "0000".**

Adjustment options include:

- Set Password**
- US**
- Canada**
- RRT Setting**
- Reset RRT**
- Unrated**



Troubleshooting

If the product is not working properly, please check the following troubleshooting hints before you contact customer service:

Symptoms	Possible Solution
Blank screen	Check the status LED. The LED should illuminate blue for a few moments when the TV is powered on, then extinguish. Please check if an input source is available and that the port of the device has been connected correctly in the Service Settings/ Input Ports menu. Press “Menu” on your remote control: you should see the OSD menu. Check your settings for misconfigurations and adjust accordingly. Alternatively, perform a factory reset to restore the TV Mirror to its default settings. If the problem still exists contact customer service.
Color defects	Check that the signal cable connector is properly connected and that the connection pins are not bent or damaged.
The image is unsatisfactory	Adjust the picture characteristics as described in the above-mentioned section “Video Settings”. Image is not stable Check that the display resolution and frequency from your media source is compatible with the TV Mirror.
Error message: “No Signal”	Check that the connected media sources are switched on. Check that the signal cable connector is properly connected and that the connection pins are not bent or damaged. Press “Menu” on your remote control: you should see the OSD menu. Check your settings for misconfigurations and adjust accordingly. Alternatively, perform a factory reset to restore the TV Mirror to its default settings. If the problem still exists contact customer service.
Low or no sound	Press “Volume Up” and/or “Volume Down” on your remote control and check the audio connection cable(s). Make sure that the Volume Limit setting in the Service Settings menu has been set to an audible value. Ensure that the speaker selector switch on the until is correctly switched to designate internal or external speakers.
Remote control doesn’t work	Replace the batteries in the remote. Tip! If the problem persists, verify that the remote is sending IR signal by observing the IR output on the remote via a cell phone camera. IR signal will appear blue in the camera. If there is no IR signal or the problem persists, contact customer service.
Pixel errors	Pixel errors outside of Séura’s specified and permitted area are covered under Séura’s limited product warranty. Please inquire directly with Séura Technical Support regarding Séura’s Pixel Policy.

NOTE: If the above troubleshooting hints do not help you to find a solution, please contact Séura.

Technical Specifications

	19 INCH TV Model: 19, Version: 6	27 INCH TV Model: 27, Version: 6	
CUSTOMIZATIONS	CUSTOM DESIGN OPTIONS	Mirror size, mirror shape, holes, TV screen placement, frame, lighting, matching mirrors	
	CUSTOM TECHNOLOGY OPTIONS	Digital clock, night light, defogger, UL electrical plug	
	CUSTOM FUNCTIONALITY OPTIONS	Fingerprint protection**, tamper-free security latch±, safety mirror backing	
	MAXIMUM MIRROR SIZE	Up to 94" w x 70" h or 70" w x 94" h	
VIDEO	VIEWABLE SCREEN SIZE	15.9" w x 9.8" h	23.4" w x 13.1" h
	DISPLAY TYPE	LED Backlit TN/TFT LCDX	
	DISPLAY RESOLUTION	1440 x 900	1920 x 1080
	ASPECT RATIO	16:10	16:9
	CONTRAST RATIO	3000:1	3000:1
	REFRESH RATE	60Hz	60Hz
	VIEWING ANGLE	178° Horiz/Vert	178° Horiz/Vert
	RESPONSE TIME	5ms	5ms
TUNER	ATSC/NTSC	ATSC/NTSC	
INTEGRATION	HDMI	2 x HDMI 2.0 HDCP 2.2	2 x HDMI 2.0 HDCP 2.2
	COMPONENT YPBPR	1 (dongle included)†	1 (dongle included)†
	COMPOSITE (AV)	1 (dongle included)†	1 (dongle included)†
	VGA	1	1
	S-VIDEO	1	1
	RF COAXIAL ANTENNA	1	1
	USB	1 Firmware & 5V Only	1 Firmware & 5V Only
	RS-232	1 x 2.5mm connector (dongle included)†	1 x 2.5mm connector (dongle included)†
	IR	1 Input (Mono), 4 Output (Mono)	1 Input (Mono), 4 Output (Mono)
AUDIO	PC AUDIO IN	1	1
	LINE OUT	2 (1 powered, 1 unpowered*)	2 (1 powered, 1 unpowered*)
	PHOENIX TYPE SPEAKER OUTPUT	2 x 5W @8Ω/ channel	2 x 5W @8Ω/ channel
	INTERNAL SPEAKERS	2 x 10W	2 x 10W
INSTALLATION	MOUNT OPTIONS	Integrated Surface Mount or Integrated Recessed Mount	
	SURFACE MOUNT OFF-WALL DISTANCE	1 1/2"	1 1/2"
	RECESSED MOUNT IN-WALL DEPTH	3/4"	3/4"
	RECESSED MOUNT VENT GAP	1/4"	1/4"
OTHER	CERTIFICATIONS AND COMPLIANCE	FCC and CEC; UL 962 and cUL certification available upon request.	FCC and CEC; UL 962 and cUL certification available upon request.
	WARRANTY	TV Mirrors with respect to Séura's labor, glass, structure, and assembly for three (3) years; electrical and LED light strips for five (5) years; TV including remote and power supply for two (2) years; mirror technology with respect to Séura's labor and parts including clocks, night lights, defoggers, and dimmers are covered for three (3) years.	
	REMOTE	Séura IR Remote Control	

* The unpowered audio variable line out will cut audio from the speaker output.
† Mini jack connection on TV, product includes adapter cables

**Included on Lighted TV Mirrors, optional on TV Mirrors with no lighting
±Optional for Lighted TV Mirrors; unavailable on TV Mirrors

INTEGRATION AND CONTROL DOCUMENTATION

To access RS-232 Protocol and IR Commands documents, please visit www.seura.com/download-center

LIMITED PRODUCT WARRANTY

For information regarding Séura's warranty policy, please visit our website: www.seura.com/warranty. If the current Séura warranty policy is after your product purchase date, please contact Séura Customer Support to request warranty documentation from the date of your purchase.

For additional customer support, please contact Séura.

Toll Free: 1-800-957-3872 (Monday - Friday 8:00 am – 4:30 pm, Central Time)

Website: www.seura.com/support