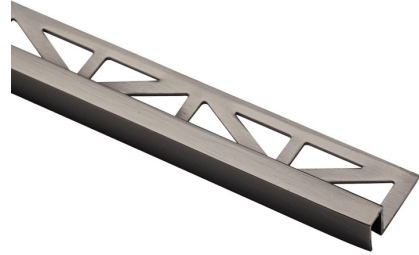


Model: PRO-PART LATON GRAPHITE MATT LINE 11MM

Codes: 100158265

Family: PRO-PART GRAPHITE MATT LINE



GENERAL FEATURES

Material	BRASS	
Profile finish	GRAPHITE MATT LINE	
Colour	GRAPHITE	
Family	PRO-PART GRAPHITE MATT LINE	
Product type	PROFILES AND SKIRTINGS	
Product type		
Product type	DECORATIVE PROFILES	
Product type		
Product type	CORNER PROFILES	
Installation	WALL TILES	
Product type	METAL COLLECTION	
Series	PRO-PART	
Profile height	11 MM	
Front profile	8 MM	
Profile length	2500 MM	

Certified company



Follow the installation and maintenance instructions published and recommended by PORCELANOSA GRUPO, adhering to the legal or regulatory requirements existing on each region.

Do not use cleaning agents containing hydrofluoric acid.

In public spaces, tiles must comply with the anti-slip rating under the DCOF (dynamic coefficient of friction) standards.

For big sizes, it is recommended using flexible modified adhesives applied by back-buttering.

This document is only commercial and cannot be used as expert opinion, documentary evidence or in any legal or administrative procedure unless authorized by BUTECH S.A.U.

Being the ceramic material that most resembles natural stone, it can show slight variations in shade, color spots and vein among pieces.