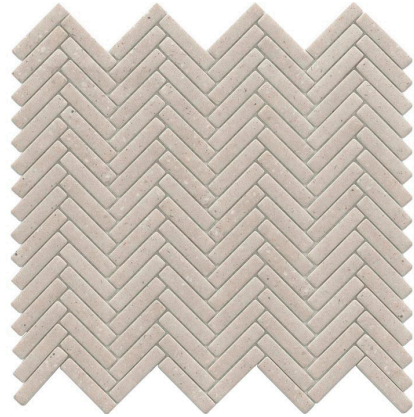


Model: HERRINGBONE BOTTEGA CALIZA

Codes: 100351890

Group: G-116

Format: 26X28X0,6CM



### RECOMMENDATIONS

Recommended adhesive	100201526 ONE-FLEX PREMIUM BLANCO 25KG	
Recommended joint	100275760 COLORSTUK RAPID PERLA N 5KG	
Recommended joint (wet area)	100275760 COLORSTUK RAPID PERLA N 5KG	100086920 FILA FOB XTREME 1L
Recommended adhesive (wet area)	100217753 POLITECH PREMIUM COMPUESTO A+B 10KG	

### TECHNICAL INFORMATION

Slip resistance (wet pendulum) irhd 55	CL 1 (30)	EN 16165 Anexo C*
Dynamic coefficient of friction (dcof)	0.66	ANSI 136.1*
Composition	RECYCLED GLASS	

### FEATURES



Material suitable for use on shower floors.



Material suitable for use on indoor floors.



Material suitable for use on shower walls.



Material suitable for use on outdoor walls.



Material suitable for use on indoor walls.

### PACKING

Sales units per square meter	13.736842 PIECES/M2	
Sales units per box	11 PIECES/BOX	
Sales units per unit	1 PIECES	
Sale unit	ST	
Base unit	ST	
Net weight	0.847 KG/PIECES	
Gross weight	0.876 KG/PIECES	

