

## SOURCE

### 50cm Floorstanding 2 Drawer Vanity Unit

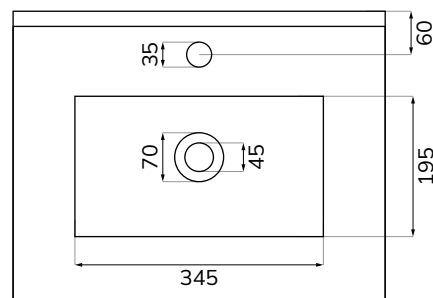
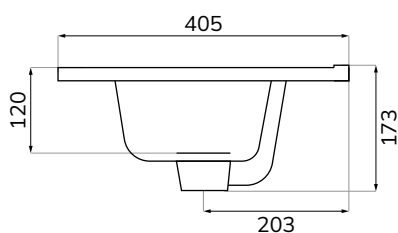
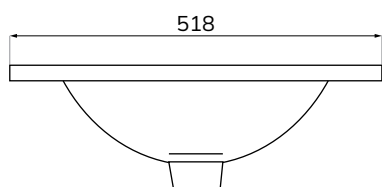
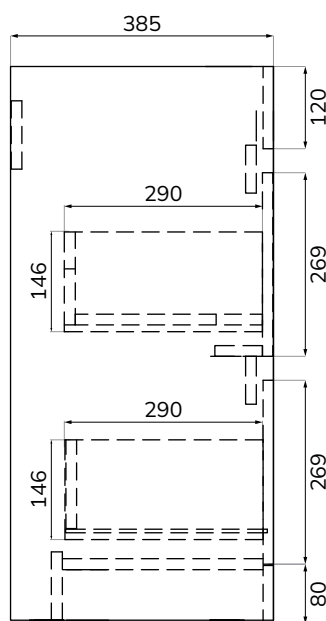
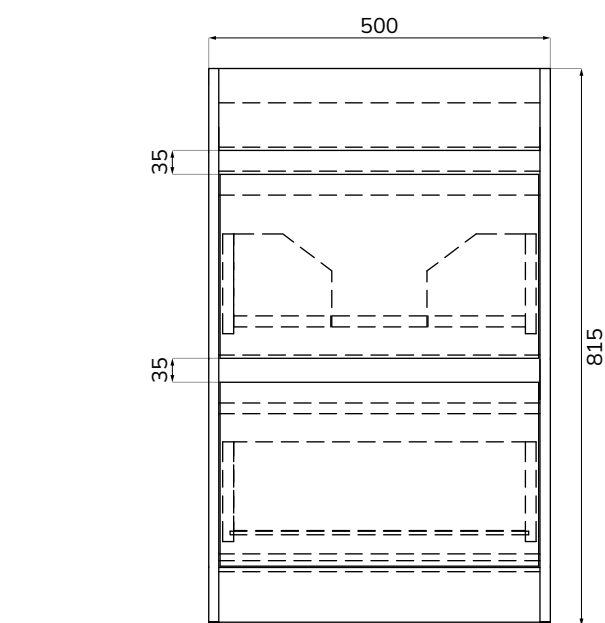
Material	Unit – MDF Basin – Ceramic
Weight	35.14Kg
Fixings	Fixing kit supplied



**Gloss White:** UF2188



**Gloss Black:** UF2189



## SOURCE

### 50cm Floorstanding 2 Drawer Vanity Unit

Finish	Oak
Code	UF2190
Material	Unit – MFC Basin – Ceramic
Weight	36.45Kg
Fixings	Fixing kit supplied

