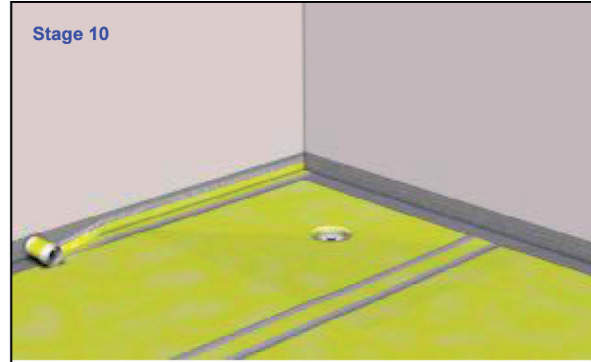


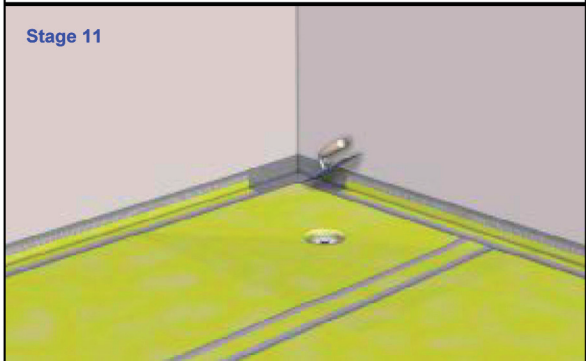
Stage 9

Apply a thin layer of tile adhesive to the wall and edges of the membrane sheet.



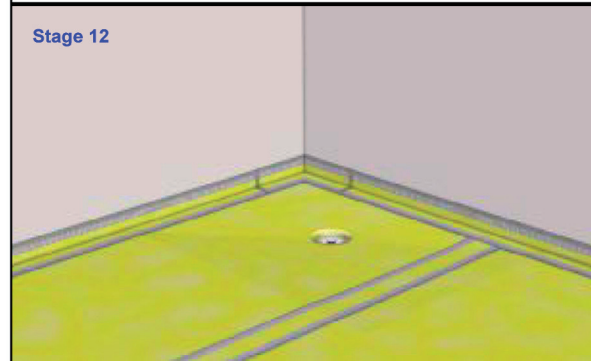
Stage 10

Apply jointing tape to the wall/floor junction. The tape should be equally spaced between the wall and floor surfaces and must again be fully bonded without voids and ripples.



Stage 11

Apply a thin layer of tile adhesive to the wall and floor edges in each corner. (internal and external corners)



Stage 12

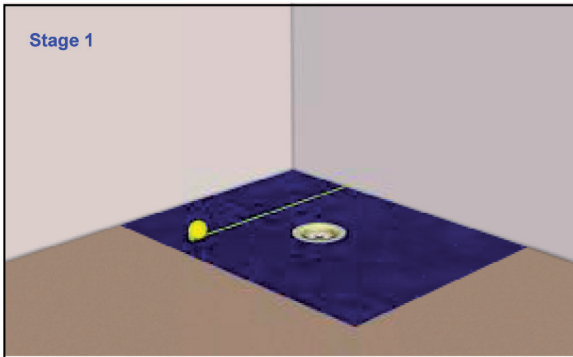
Press the pre-formed corners into place ensuring that they are also fully bonded. Allow the adhesive to dry then tile using a flexible waterproof cement-based adhesive.

CDTI-6/A

Biava 5m² Membrane Kit Installation Guide

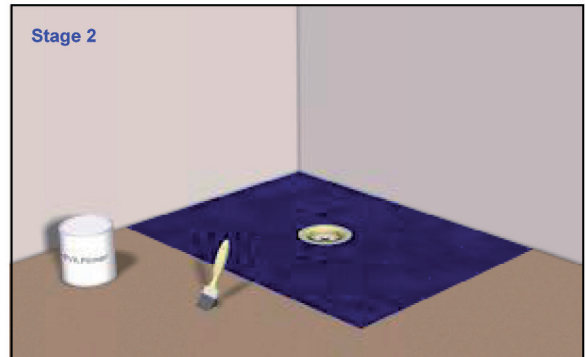


2



Stage 1

Ensure the surface is clean and dry. Measure the area to be covered, cut the membrane to size and set aside. Keep the number of pieces/joints to a minimum



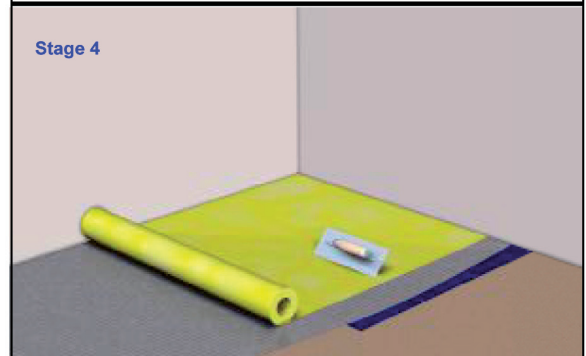
Stage 2

Prime any absorbent surfaces with a PVA primer



Stage 3

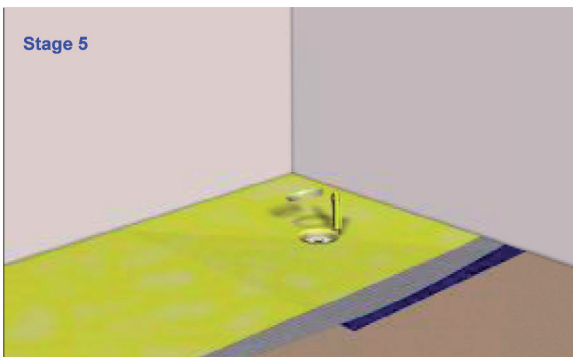
Using a 4mm notched spreader apply a flexible cement based tile adhesive to the floor. Ensure that the area covered will allow you to lay the first piece of membrane and smooth it into place.



Stage 4

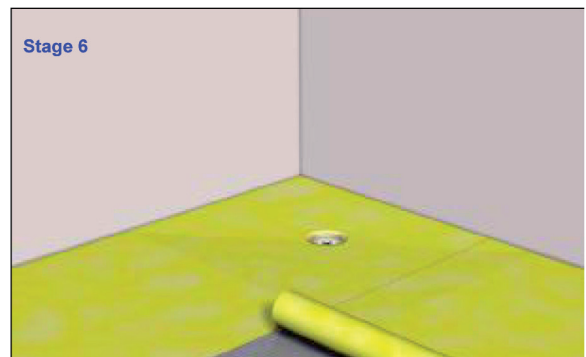
Place the membrane onto the adhesive and press down evenly over its entire area. It is important that the membrane is bonded over its entire surface without bubbles and ripples

3



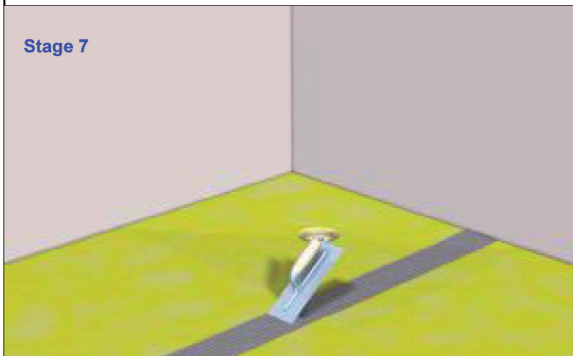
Stage 5

Using the gully's inner circular wall as a guide carefully cut out a round hole. Remove the excess matting and using the clamping ring secure the membrane into position after applying a small amount of solvent cement to the inner face of the clamping ring.



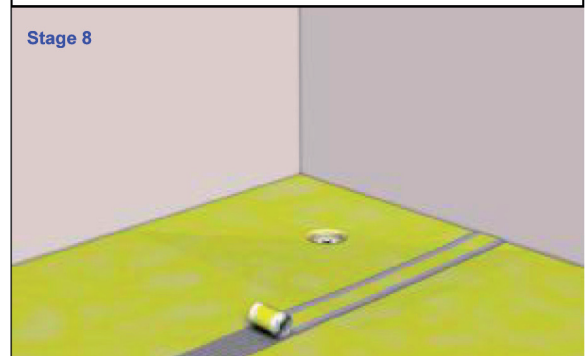
Stage 6

Lay the rest of the membrane avoiding overlap or gaps at the joints



Stage 7

Apply a thin layer of tile adhesive over the seam between sheets



Stage 8

Apply jointing tape centrally over the seam again pressing firmly into place and ensuring complete bond to the adhesive.